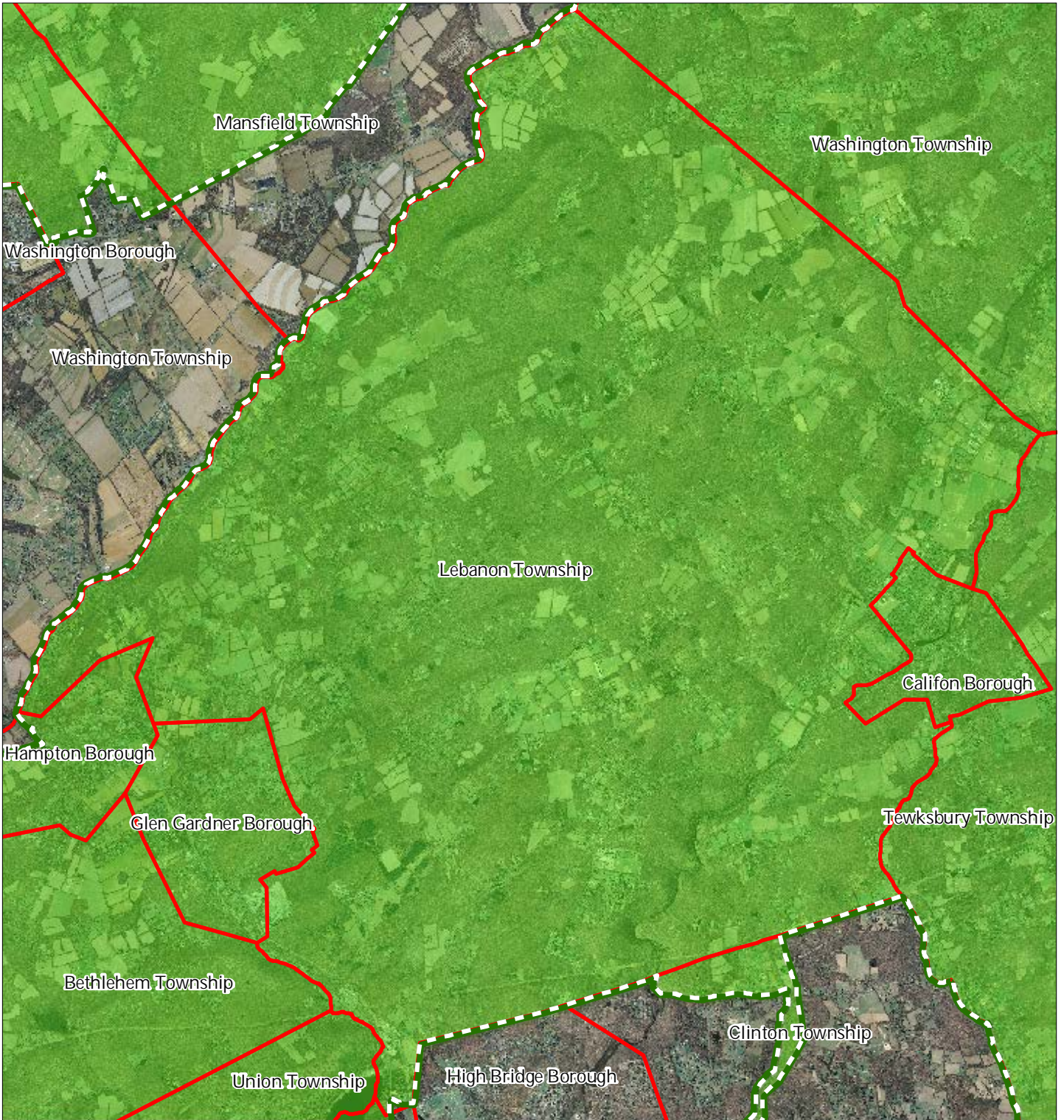


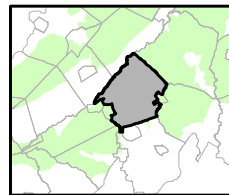
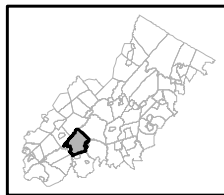


Figure 1: Preservation Area



-  Preservation Area
-  Municipal Boundaries

## Lebanon Township



1 inch = 0.968 miles



December 2011



Figure 2: Land Use Capability Map Zones



Regional Master Plan Overlay Zone Designation  
Zone

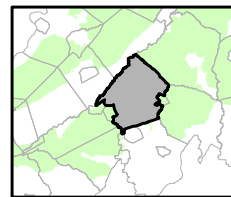
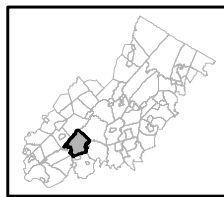
- Protection
- Conservation
- Existing Community

Sub-Zone

- Existing Community Environmentally Constrained
- Conservation Environmentally Constrained
- Lake Community
- Wildlife Management

- Lakes Greater Than 10 acres
- Preservation Area
- Municipal Boundaries

Lebanon Township



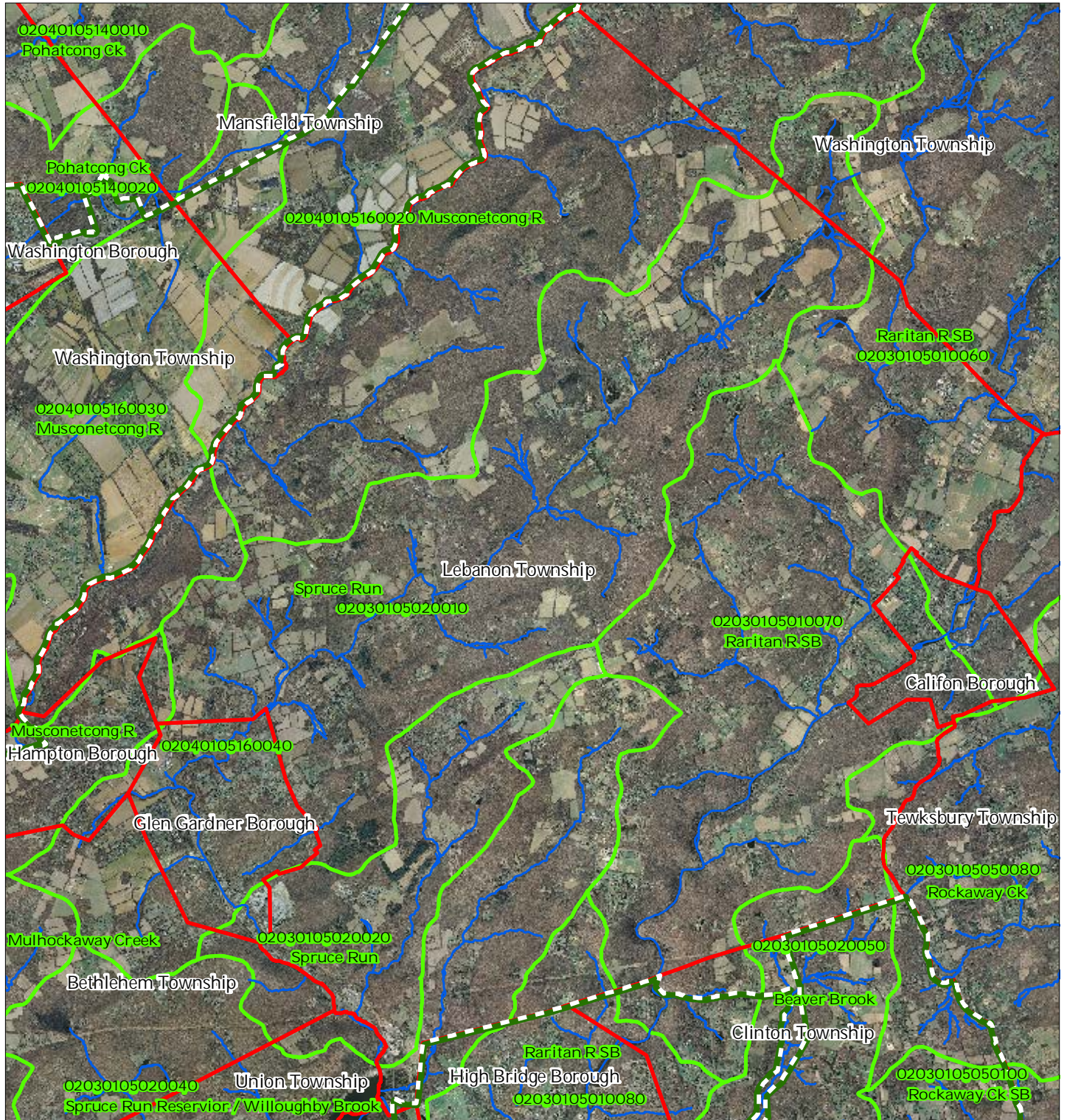
1 inch = 0.968 miles



December 2011

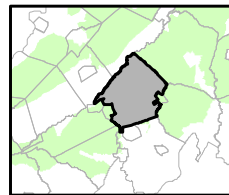


Figure 3: HUC 14 Boundaries



Lebanon Township

- HUC 14 Subwatersheds
- Stream Centerlines
- Preservation Area
- Municipal Boundaries



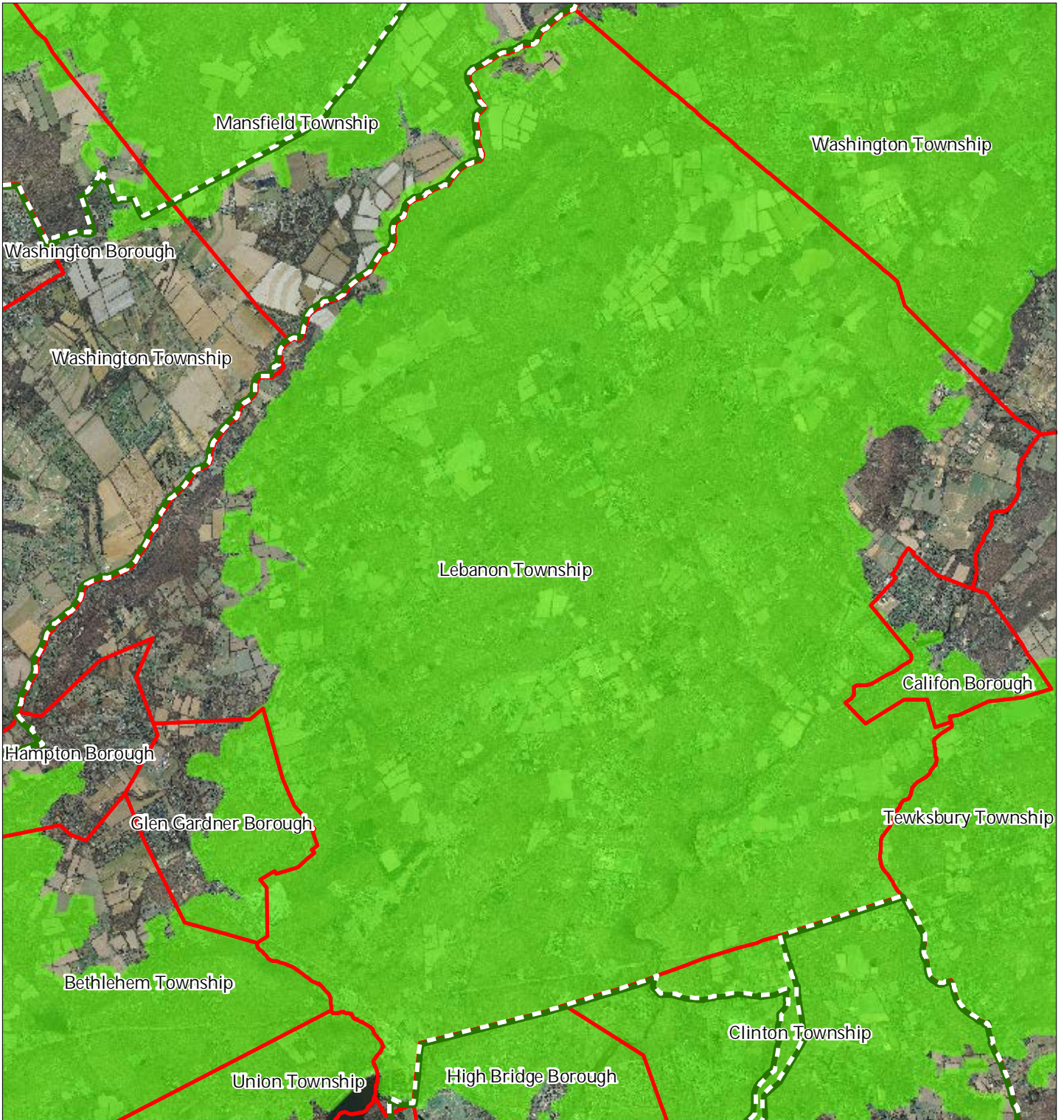
1 inch = 0.968 miles






December 2011

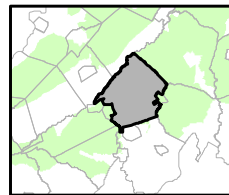
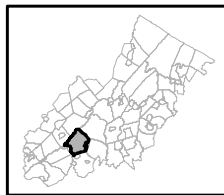


Figure 4: Forest Resource Area



-  Forest Resource Area
-  Preservation Area
-  Municipal Boundaries

## Lebanon Township



1 inch = 0.968 miles






December 2011

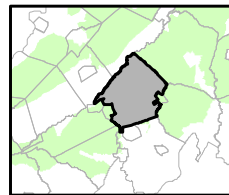


Figure 5: Total Forest Area



-  Forested Areas
-  Preservation Area
-  Municipal Boundaries

## Lebanon Township



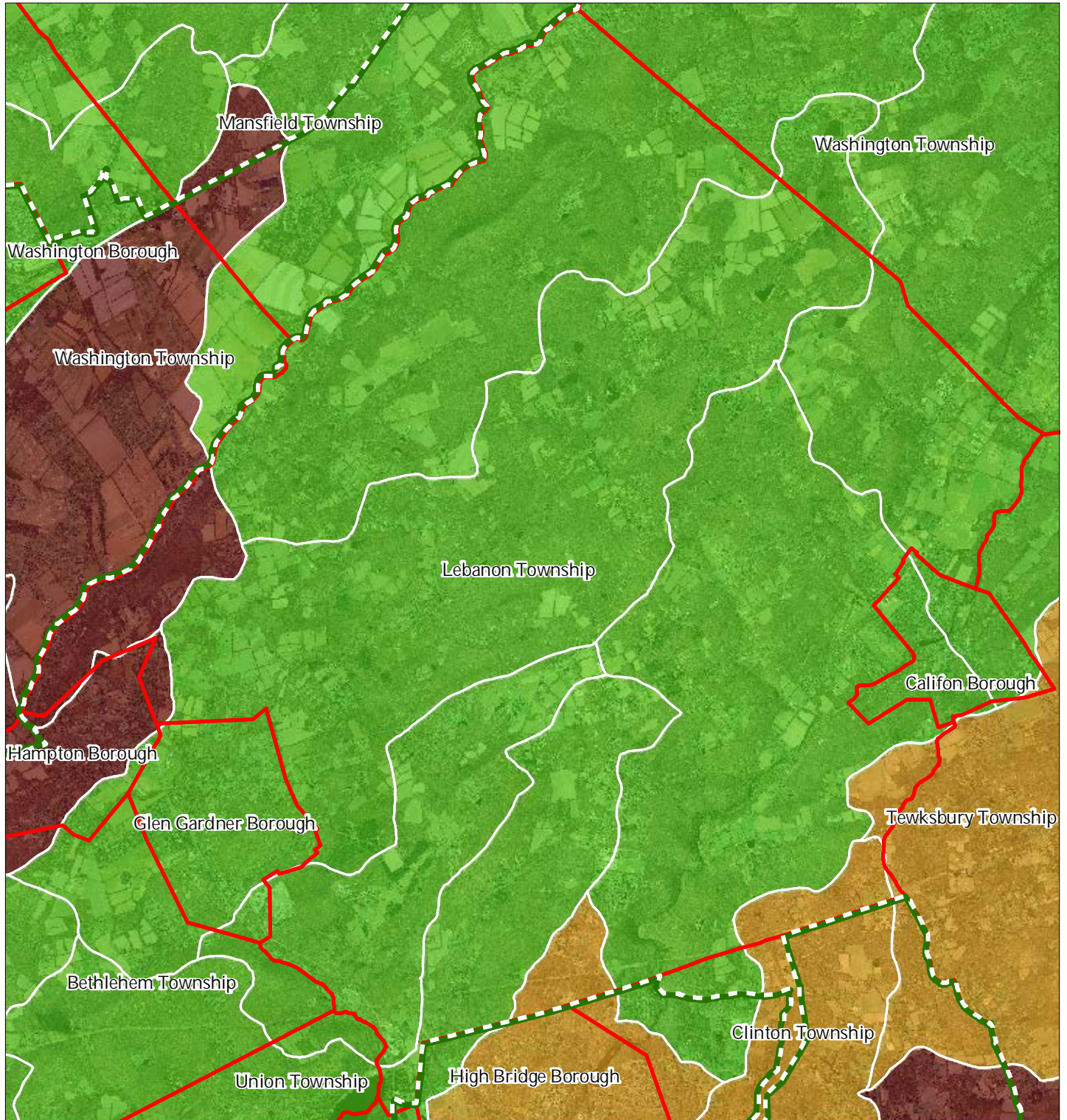
1 inch = 0.968 miles



December 2011



Figure 6: Forest Subwatersheds



Forest Integrity by HUC14 Subwatershed

- Low*
- Moderate*
- High*
- Preservation Area
- Municipal Boundaries

Lebanon Township



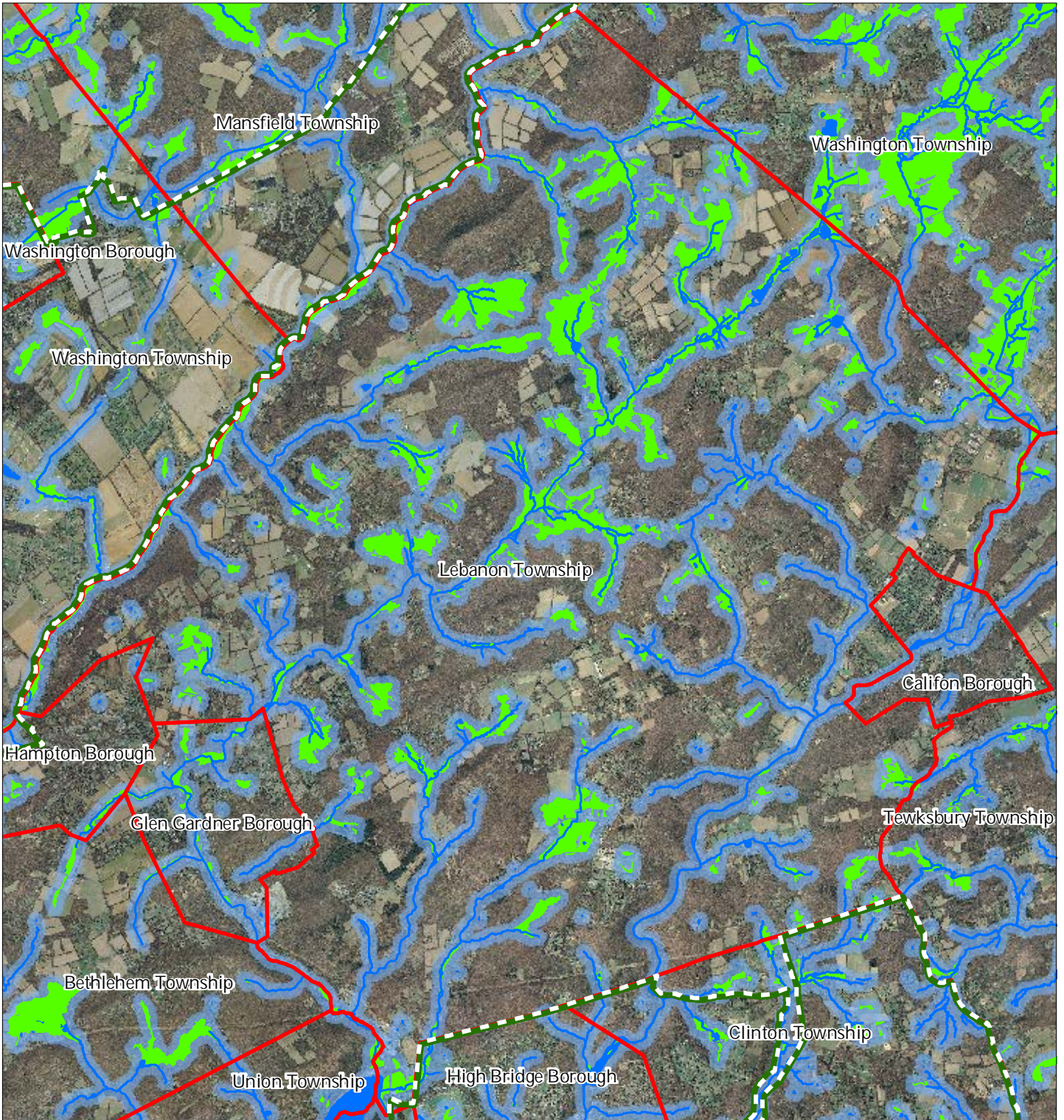
1 inch = 0.968 miles



December 2011

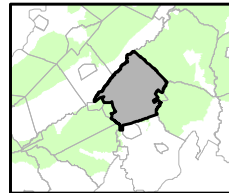
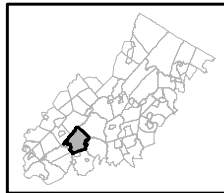


Figure 7: Highlands Open Waters



- Highlands Open Water Buffers (300ft)
- Streams
- Wetlands
- Lakes & Ponds
- Preservation Area
- Municipal Boundaries

Lebanon Township



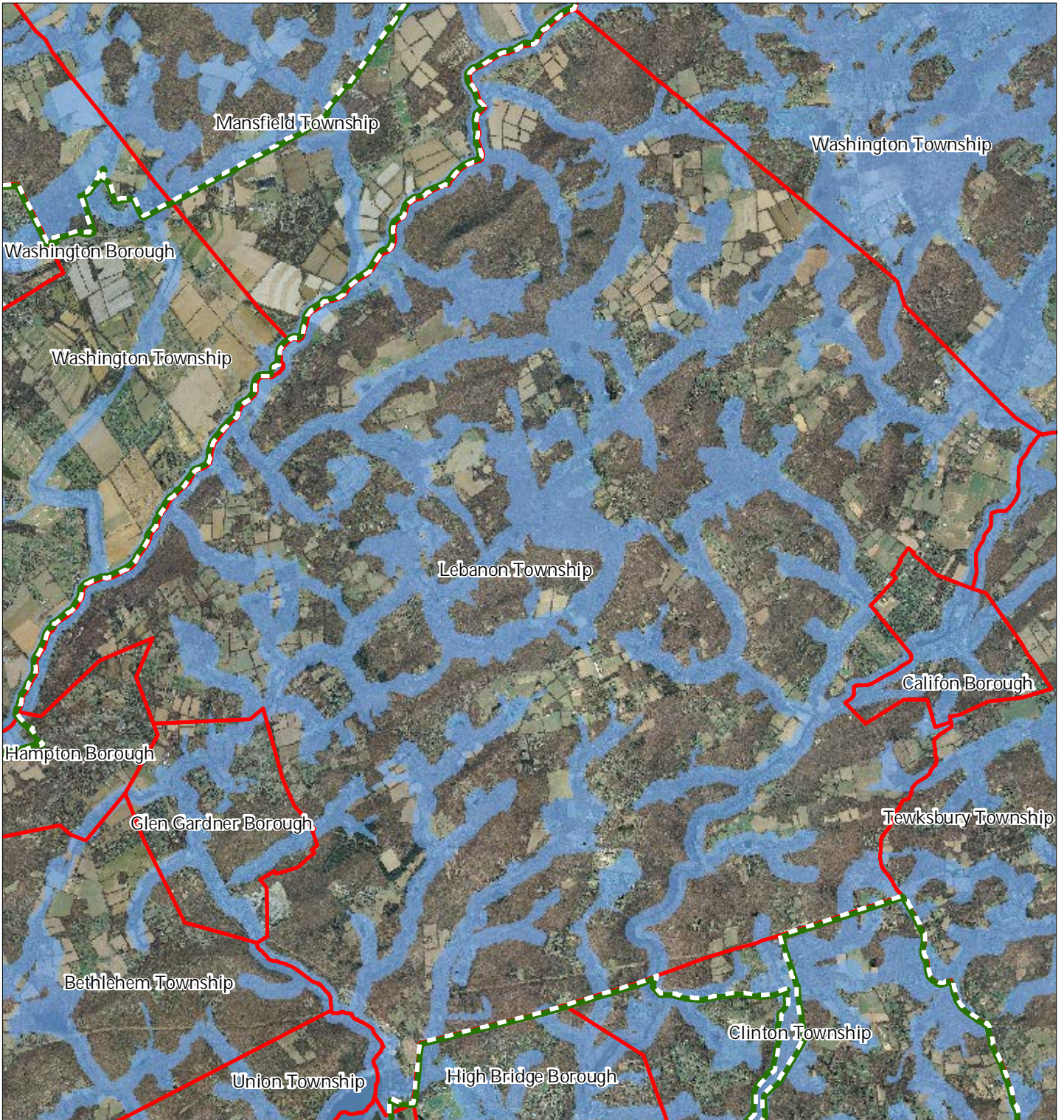
1 inch = 0.968 miles

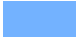




December 2011

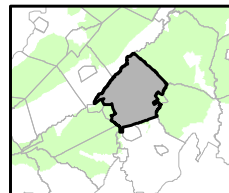
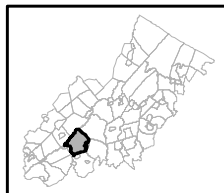


Figure 8: Highlands Riparian Areas



-  Riparian Area
-  Preservation Area
-  Municipal Boundaries

Lebanon Township



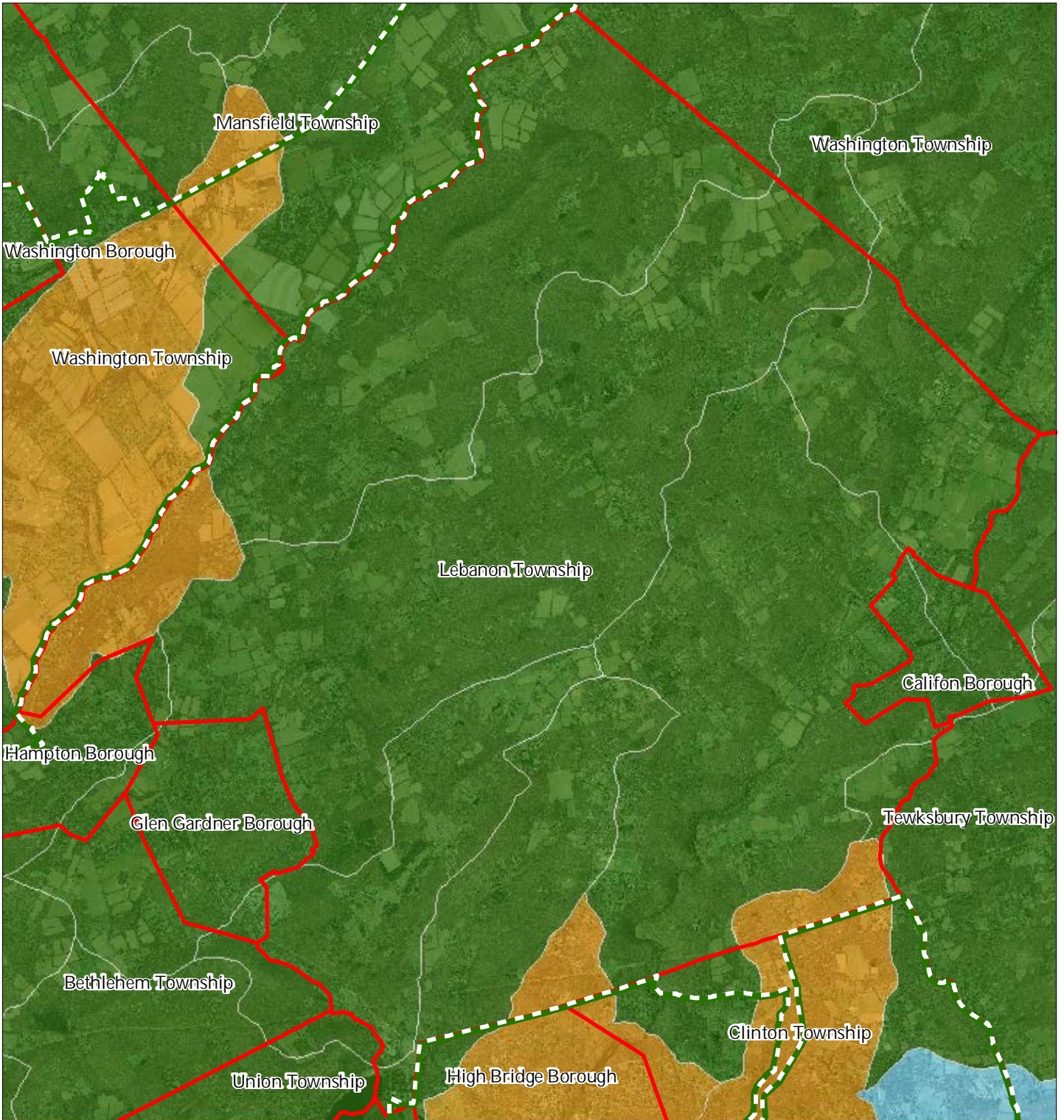
1 inch = 0.968 miles



December 2011



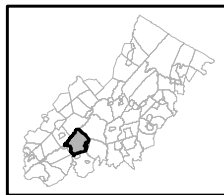
Figure 9: Watershed Values



Watershed Values by HUC14 Subwatershed

- Low*
- Moderate*
- High*
- Preservation Area
- Municipal Boundaries

Lebanon Township



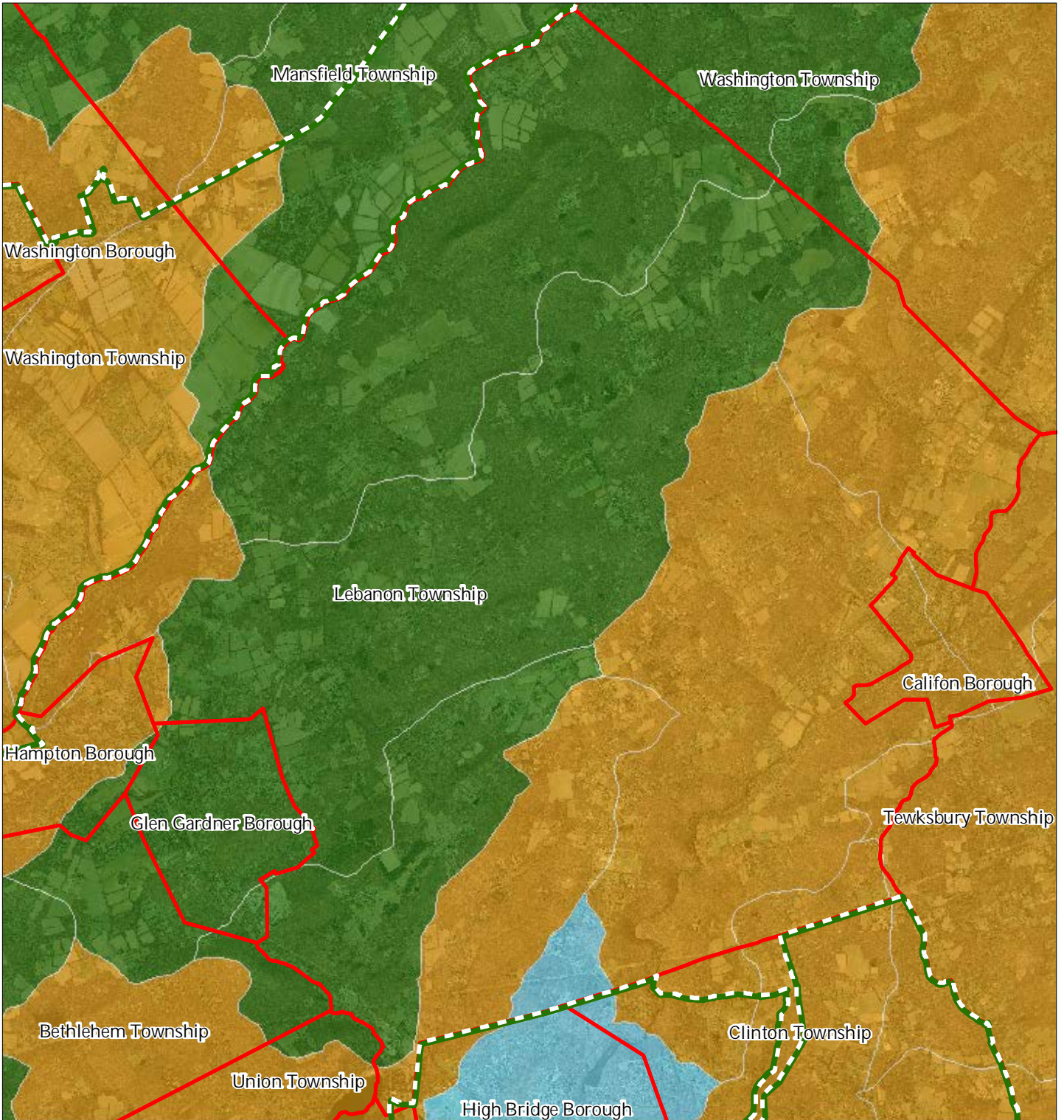
1 inch = 0.968 miles



December 2011



Figure 10: Riparian Integrity



Riparian Integrity by HUC14 Subwatershed

- Low*
- Moderate*
- High*
- Preservation Area
- Municipal Boundaries

Lebanon Township



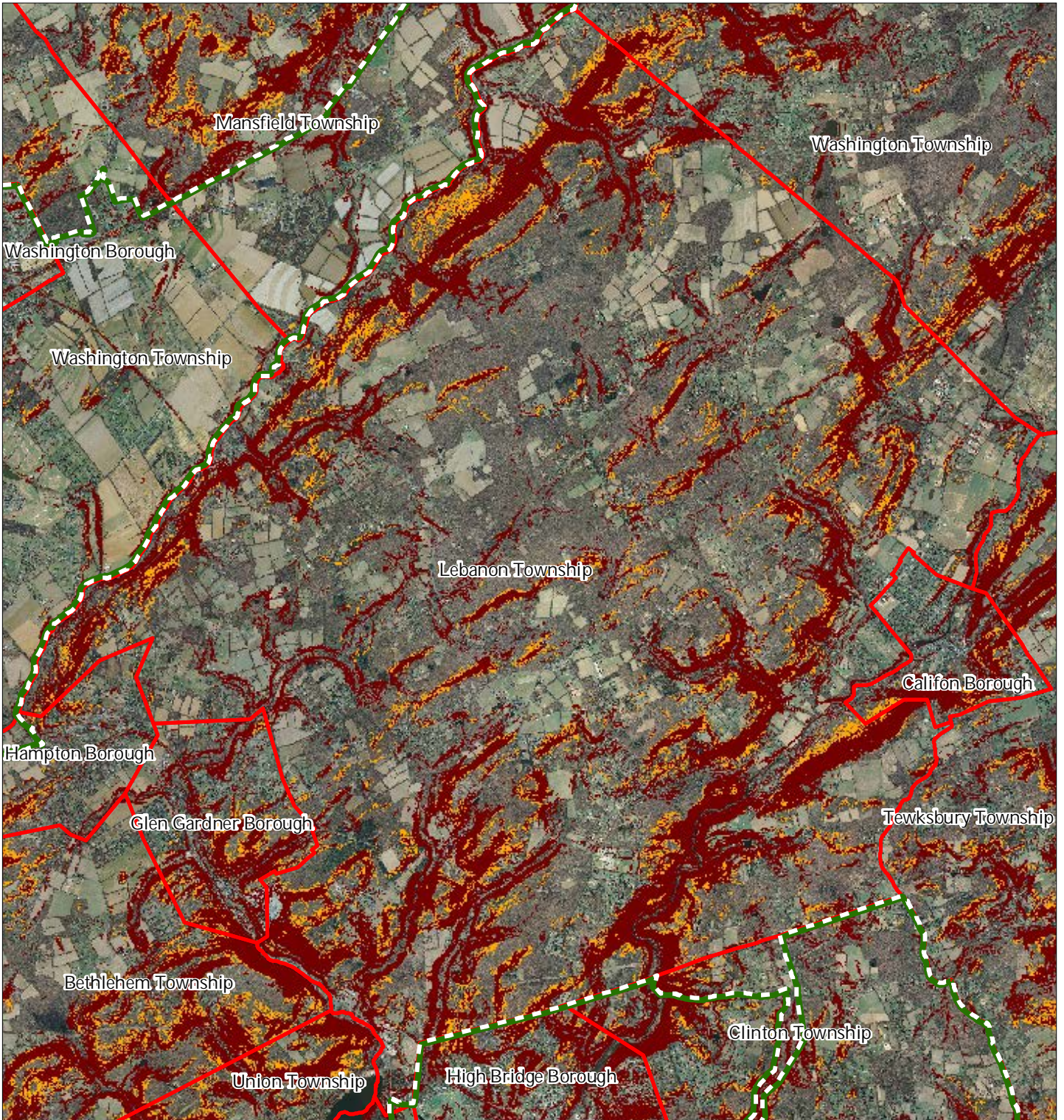
1 inch = 0.968 miles







December 2011



Figure 11: Steep Slopes Protection Areas



Steep Slopes

-  Moderate
-  Severe
-  Preservation Area
-  Municipal Boundaries

Lebanon Township



1 inch = 0.968 miles






December 2011

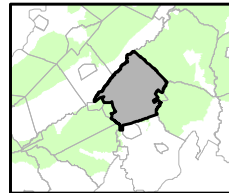
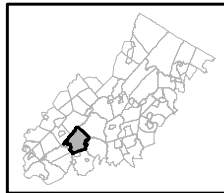


Figure 12: Critical Wildlife Habitat



-  Critical Wildlife Habitat
-  Preservation Area
-  Municipal Boundaries

Lebanon Township



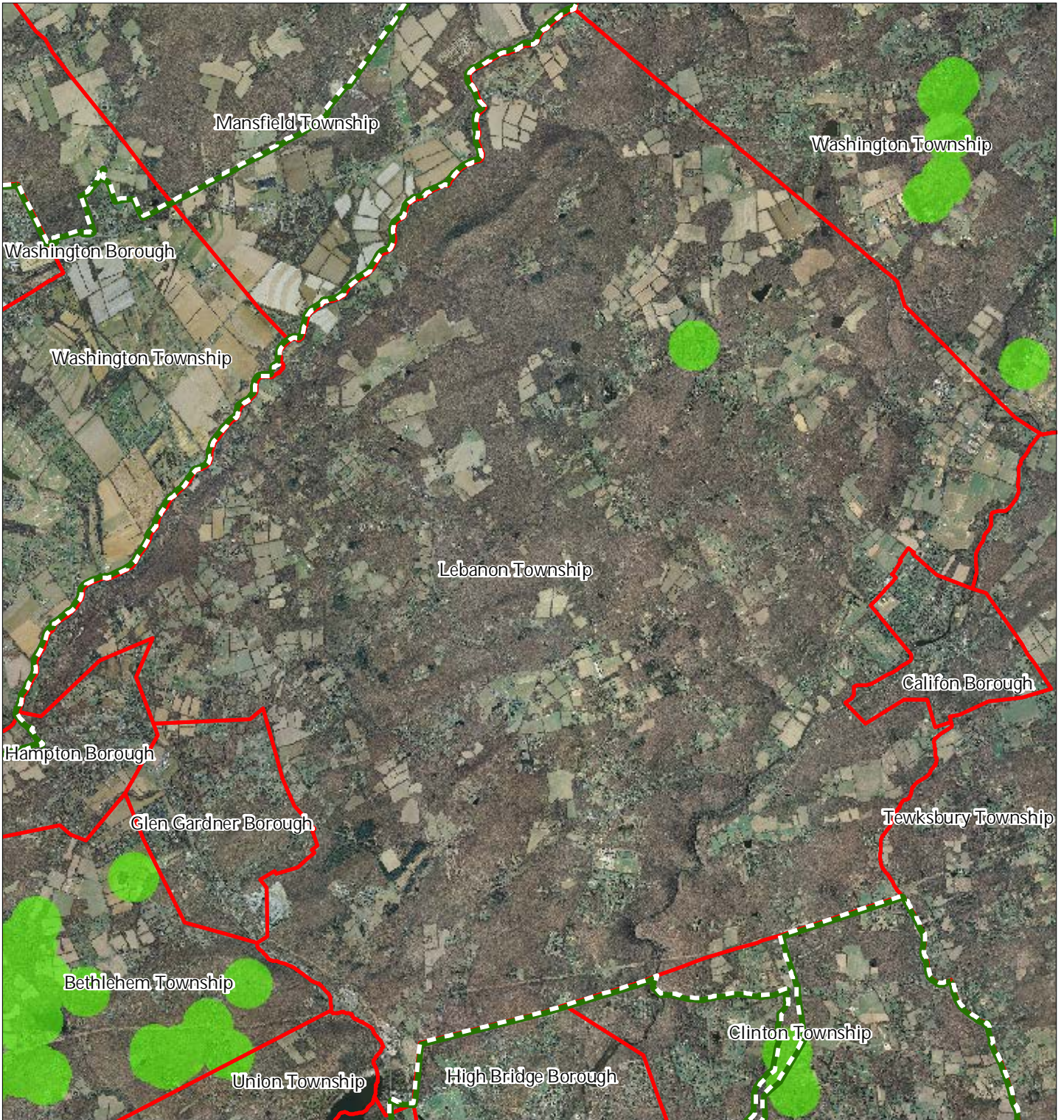
1 inch = 0.968 miles






December 2011

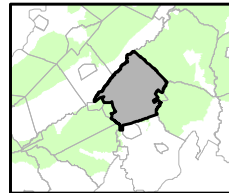
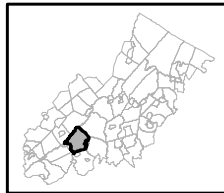


Figure 14: Vernal Pools



-  Vernal Pools + 1000ft Buffer
-  Preservation Area
-  Municipal Boundaries

Lebanon Township



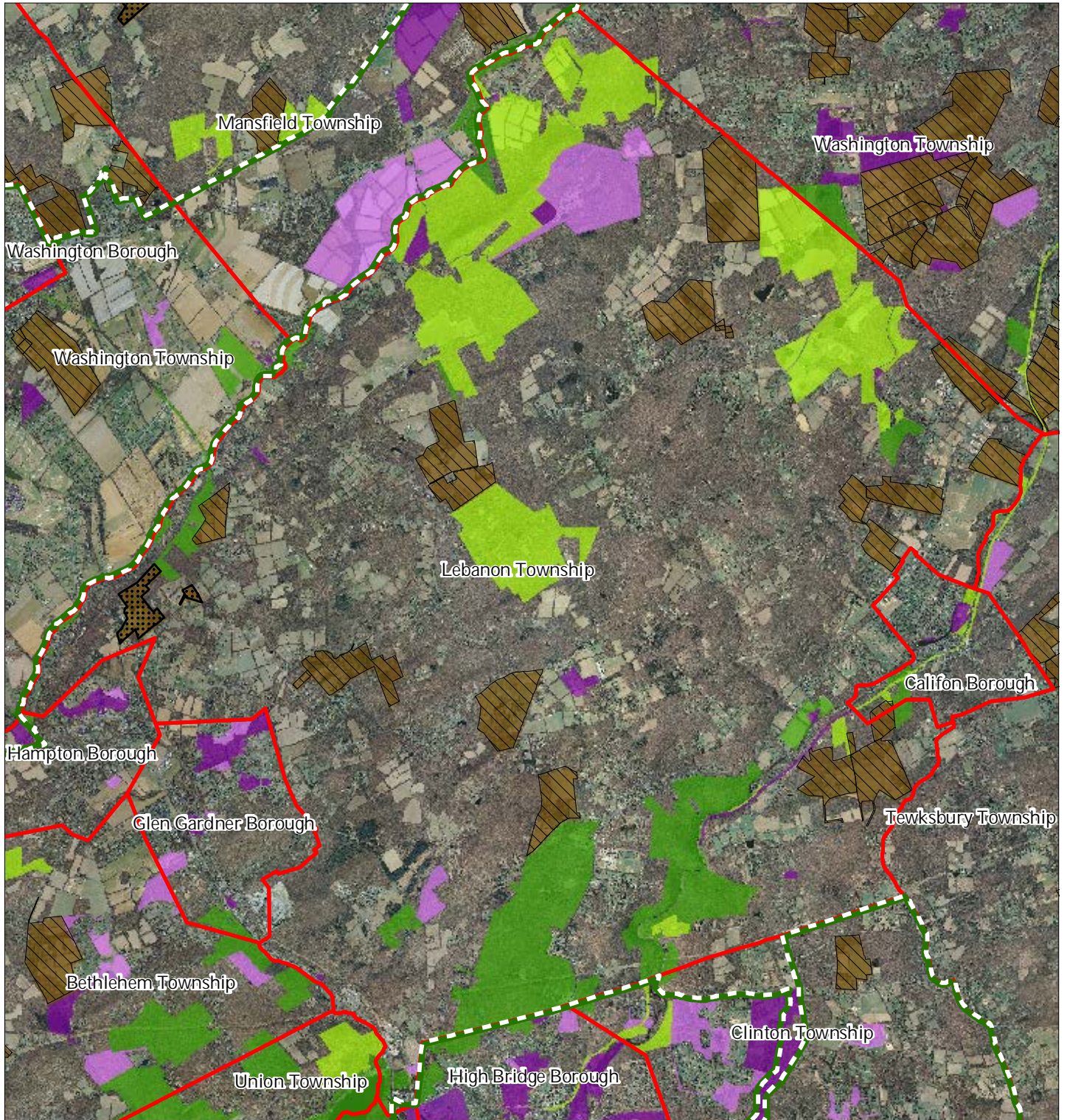
1 inch = 0.968 miles



December 2011

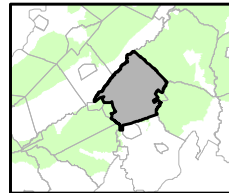
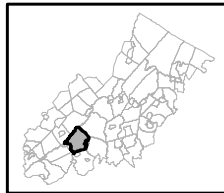


Figure 15: Preserved Lands



- |   |                               |
|---|-------------------------------|
| <b>Preserved Lands</b>                  | <b>Conservation Easements</b> |
| Federal Open Space                      | Green Acres                   |
| State Open Space                        | <b>SADC Easements</b>         |
| County Open Space                       | SADC Final                    |
| Municipal Open Space                    | SADC Preserved                |
| Non-Profit/Private Open Space           | Municipal Boundaries          |
| Water Supply Watershed Lands            | Preservation Area             |
| Preserved Farmland                      |                               |
| Highlands Transfer of Development Lands |                               |

## Lebanon Township



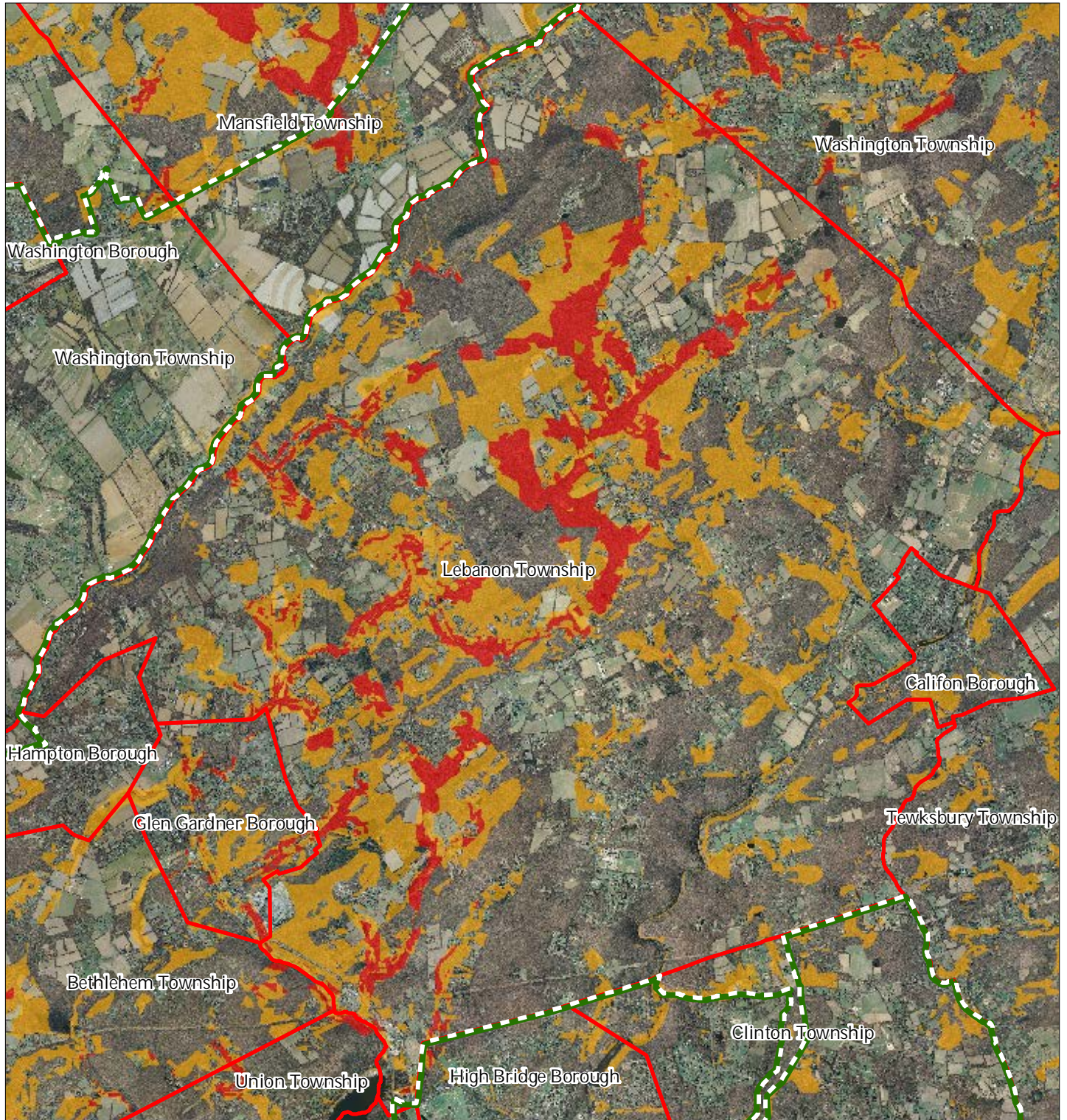
1 inch = 0.968 miles



December 2011



Figure 16: Highlands Conservation Priority Areas



Conservation Priority Area

- Moderate*
- High*
- Preservation Area
- Municipal Boundaries

Lebanon Township



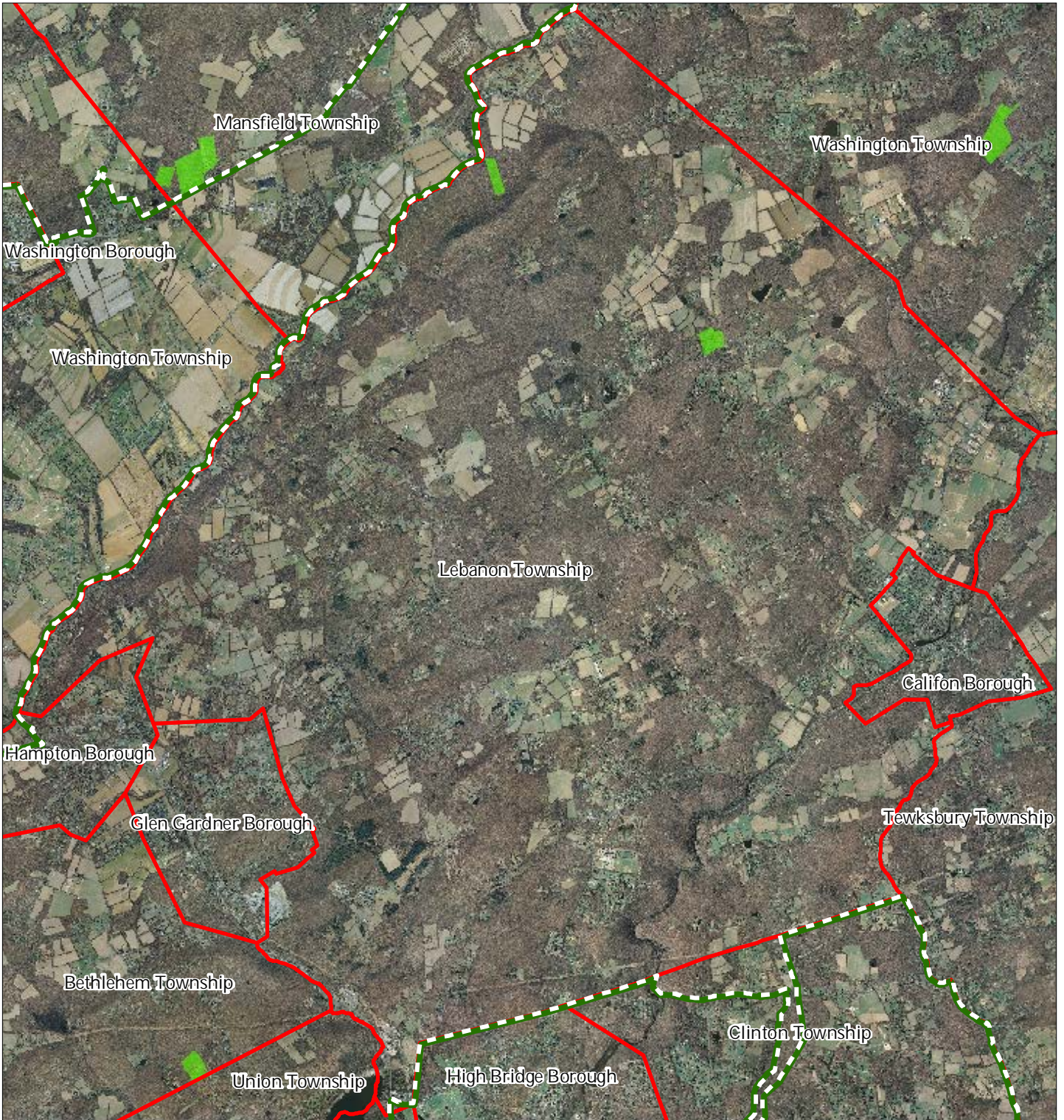
1 inch = 0.968 miles






December 2011

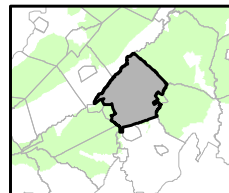
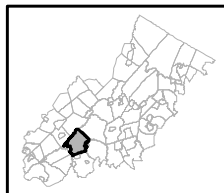


Figure 17: Highlands Special Environmental Zone



-  Special Environmental Zones
-  Preservation Area
-  Municipal Boundaries

Lebanon Township



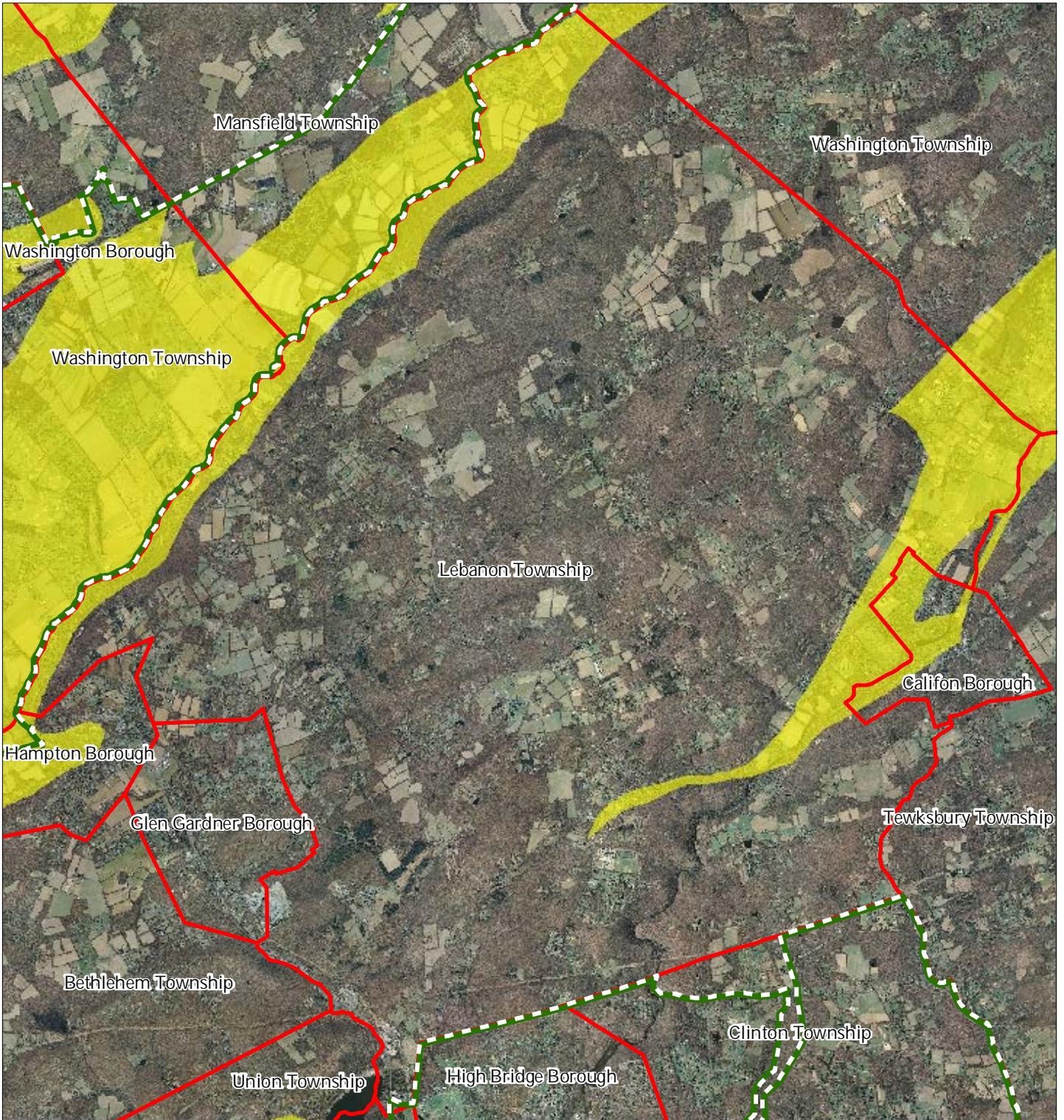
1 inch = 0.968 miles






December 2011

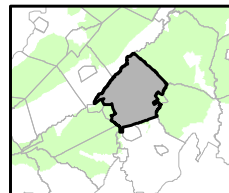
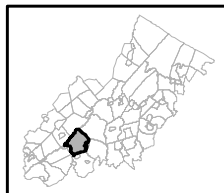


Figure 18: Carbonate Rock Areas



-  Carbonate Rock Area
-  Preservation Area
-  Municipal Boundaries

## Lebanon Township



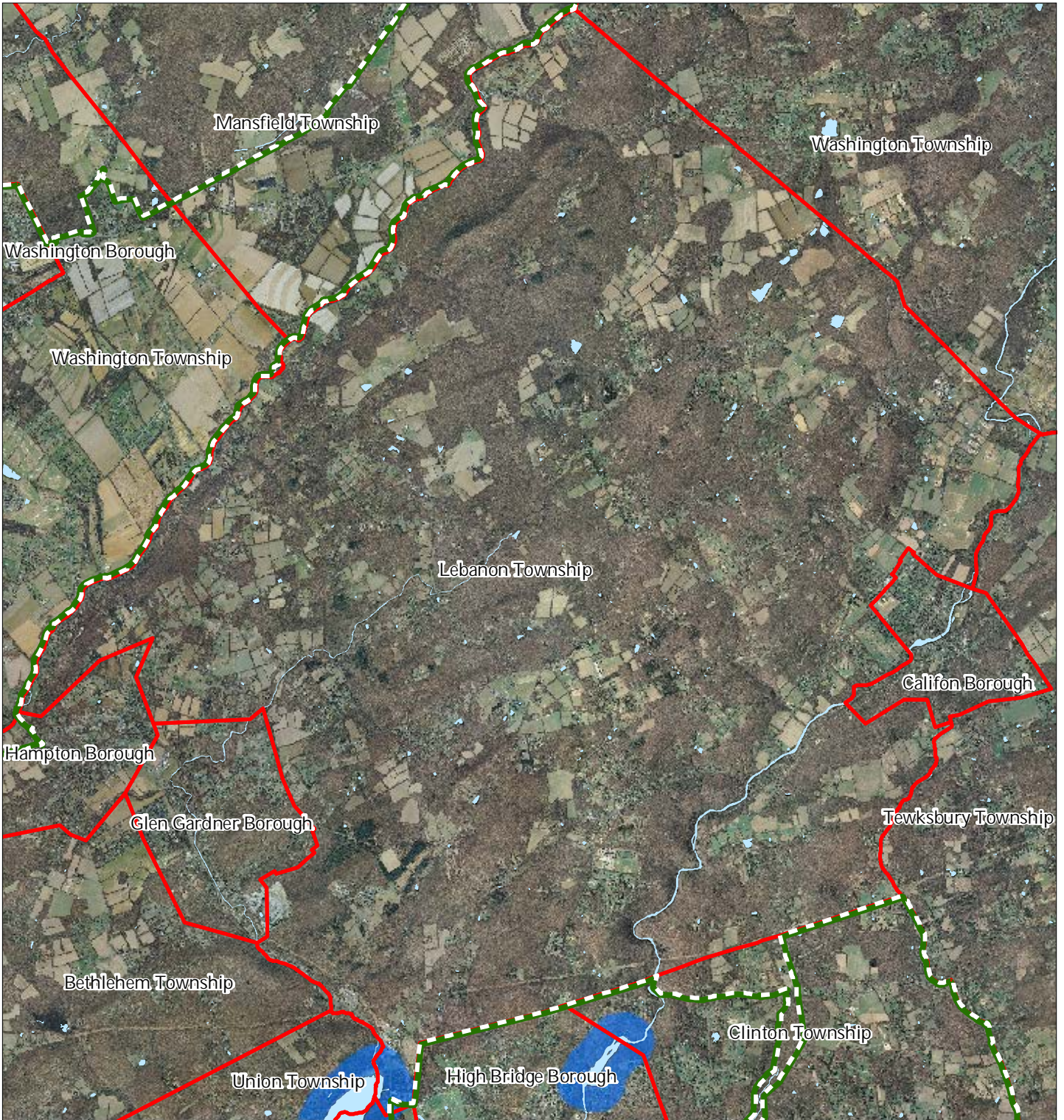
1 inch = 0.968 miles

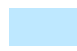





December 2011

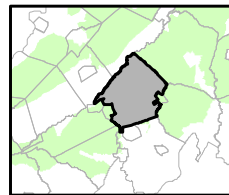


Figure 19: Lake Management Area



-  Lakes & Ponds
-  Lake Management Area
-  Preservation Area
-  Municipal Boundaries

## Lebanon Township



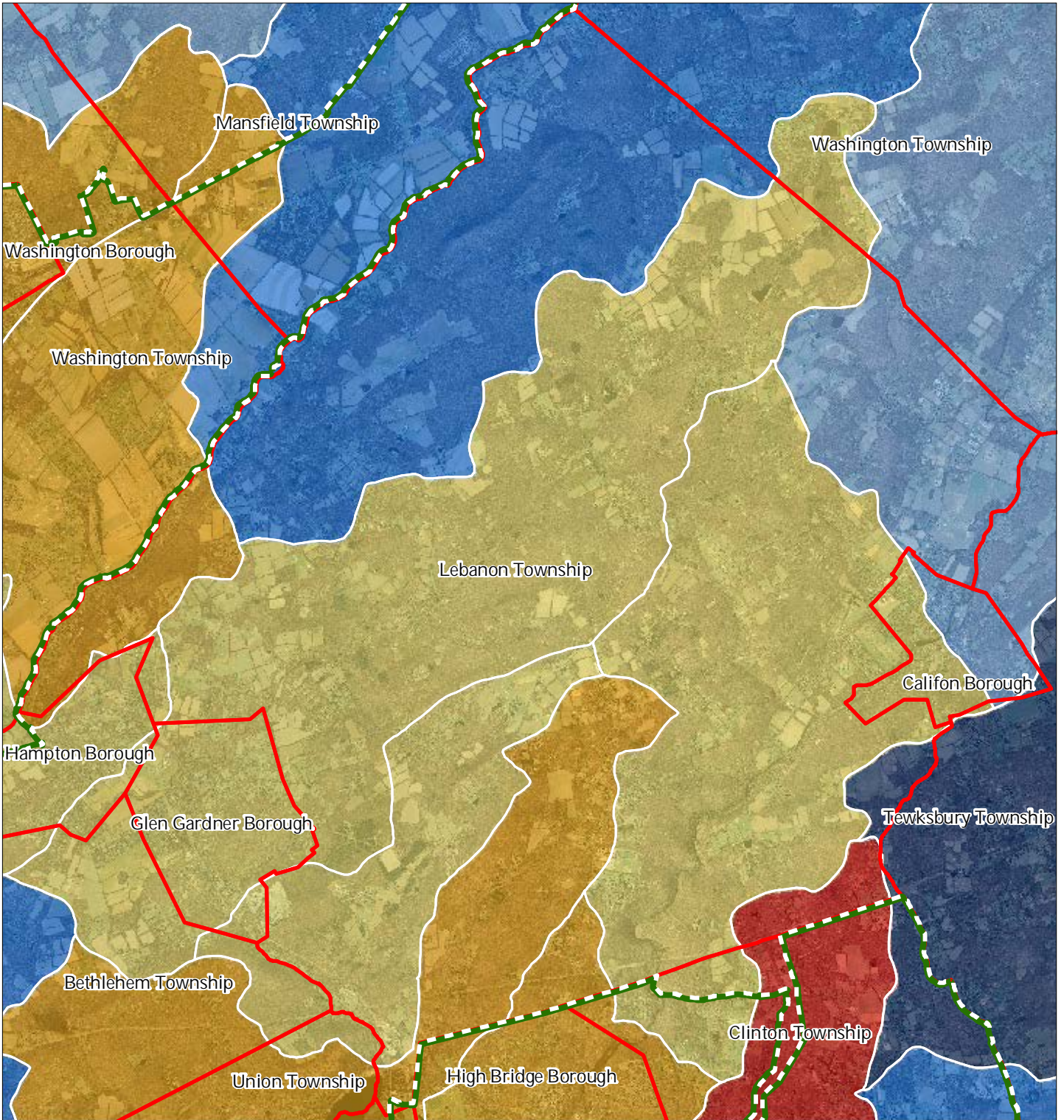
1 inch = 0.968 miles



December 2011



Figure 20: Net Water Availability



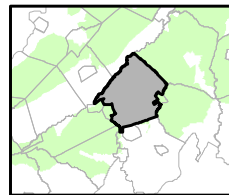
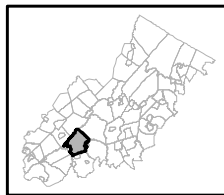
Net Water Availability By HUC14

Million Gallons Per Day (MGD)

- 0.10 - 0.39
- 0.05 - 0.09
- 0.00 - 0.04
- 0.09 - 0.00
- 0.99 - -0.10
- 7.10 - -1.00

- Preservation Area
- Municipal Boundaries

Lebanon Township



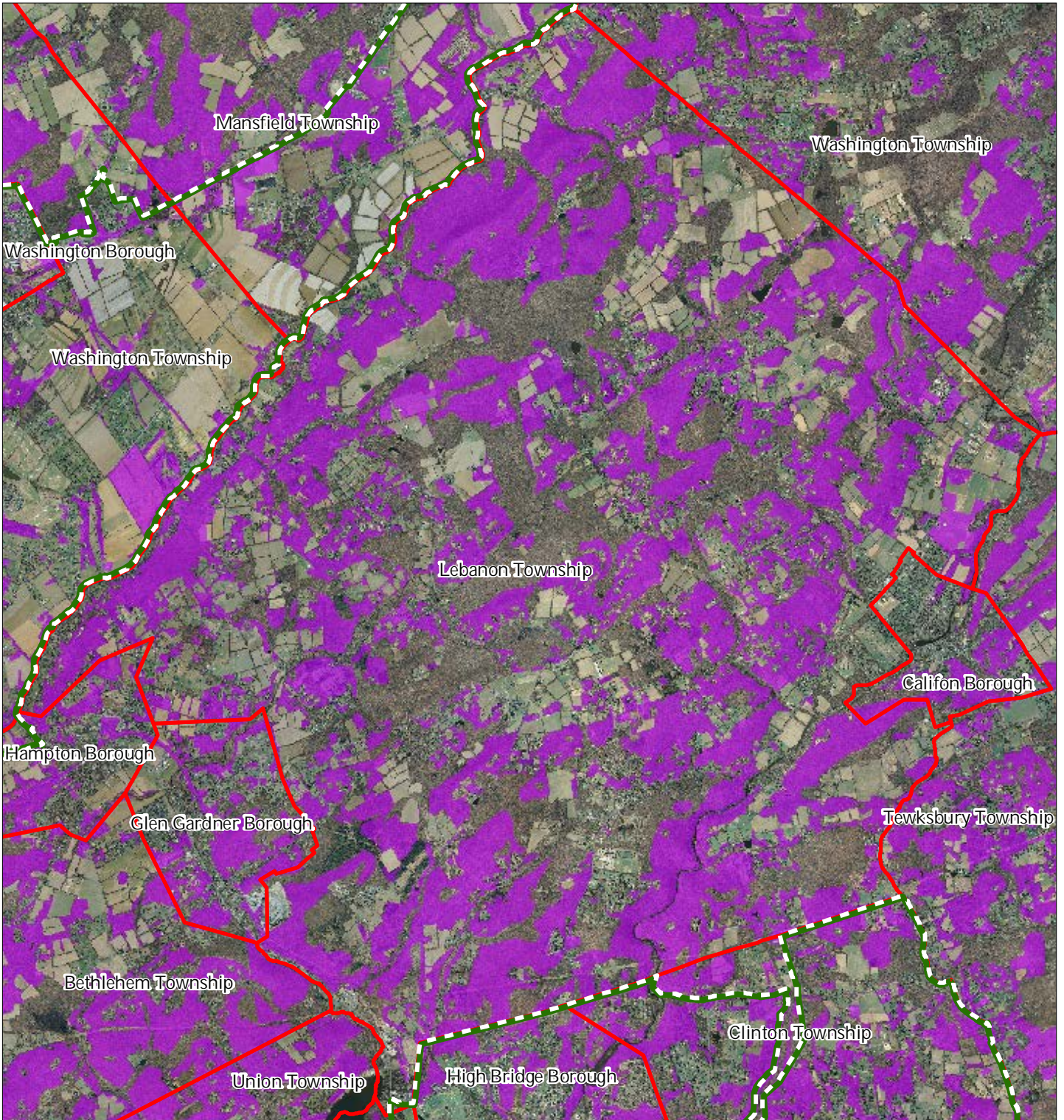
1 inch = 0.968 miles






December 2011

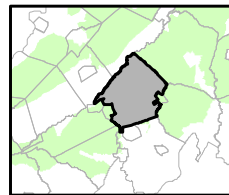


Figure 21: Prime Ground Water Recharge Areas



-  Prime Groundwater Recharge Areas
-  Preservation Area
-  Municipal Boundaries

## Lebanon Township



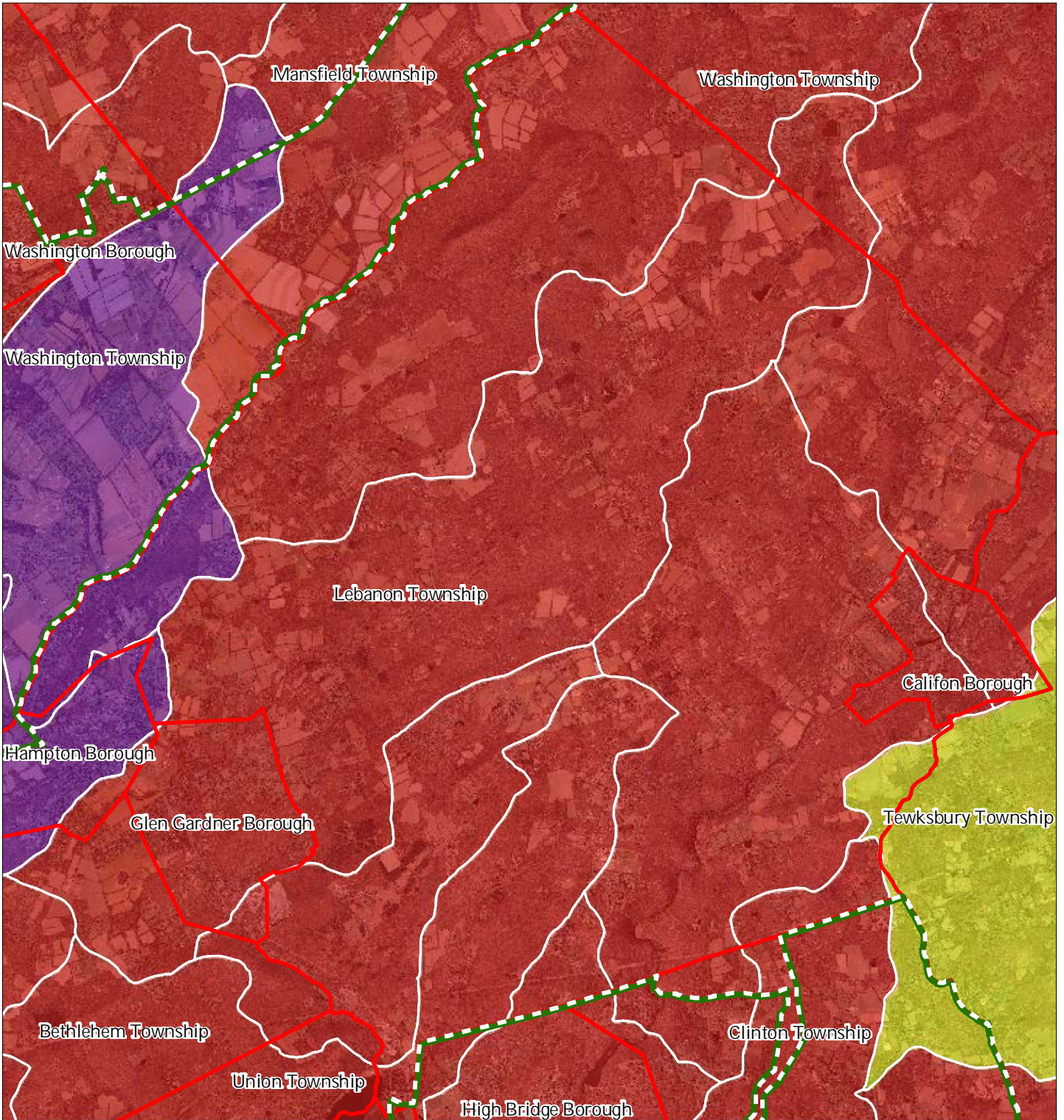
1 inch = 0.968 miles



December 2011



Figure 22: HUC 14s on NJDEP Impaired Waters List



Impaired Waters Overall Assessment by HUC14 Subwatershed

- Non Impacted*
- Insufficient Data Available*
- Moderate*
- Water Quality Impaired*
- Preservation Area
- Municipal Boundaries

Lebanon Township



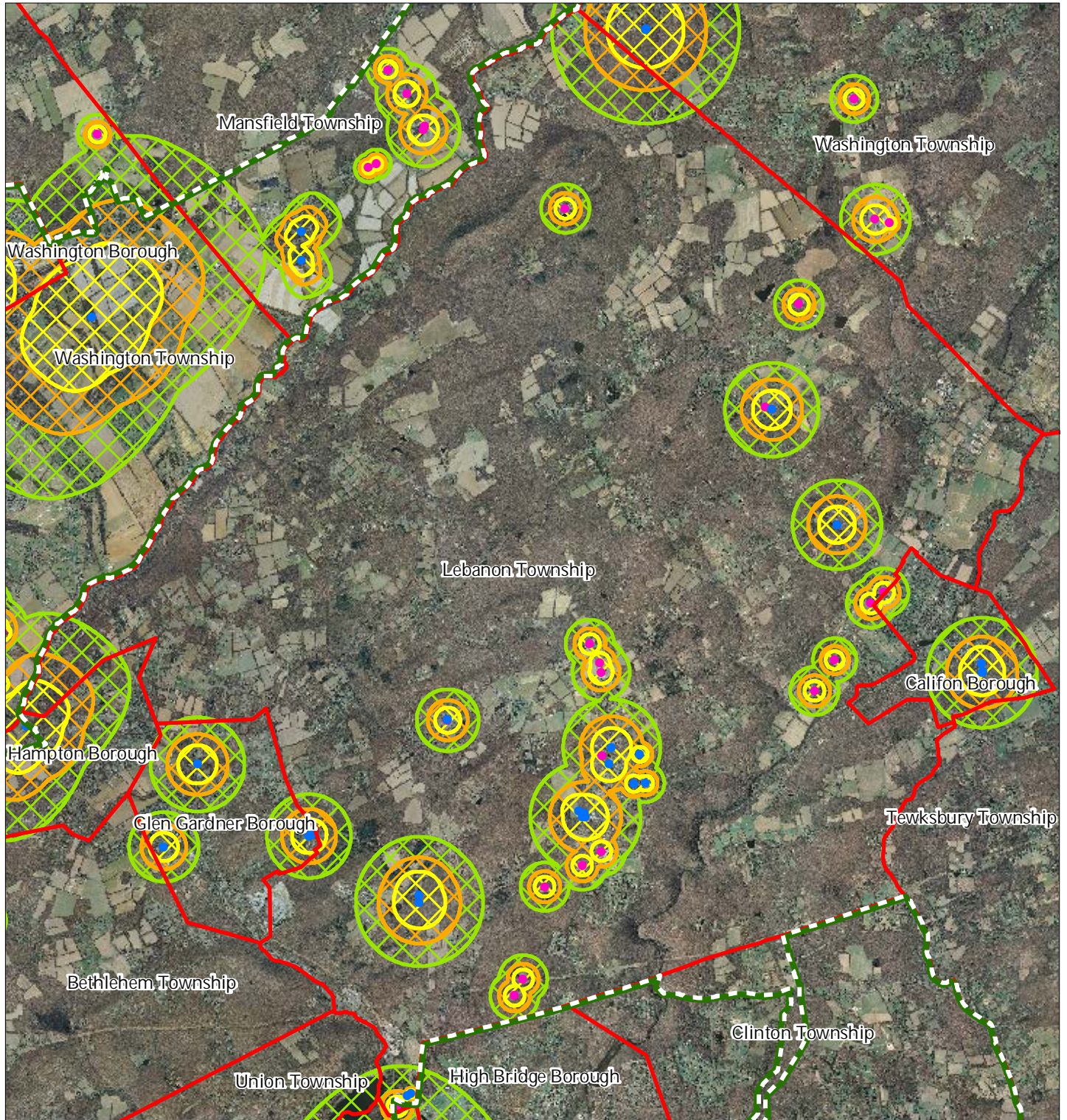
1 inch = 0.968 miles



December 2011



Figure 23: Wellhead Protection Areas



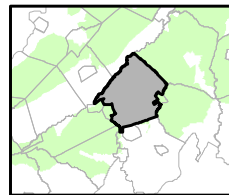
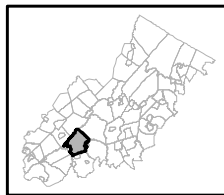
- Public Community Wells
- Public Non-Community Wells

Wellhead Protection Areas

- 2-Year Tier
- 5-Year Tier
- 12-Year Tier

- Preservation Area
- Municipal Boundaries

Lebanon Township



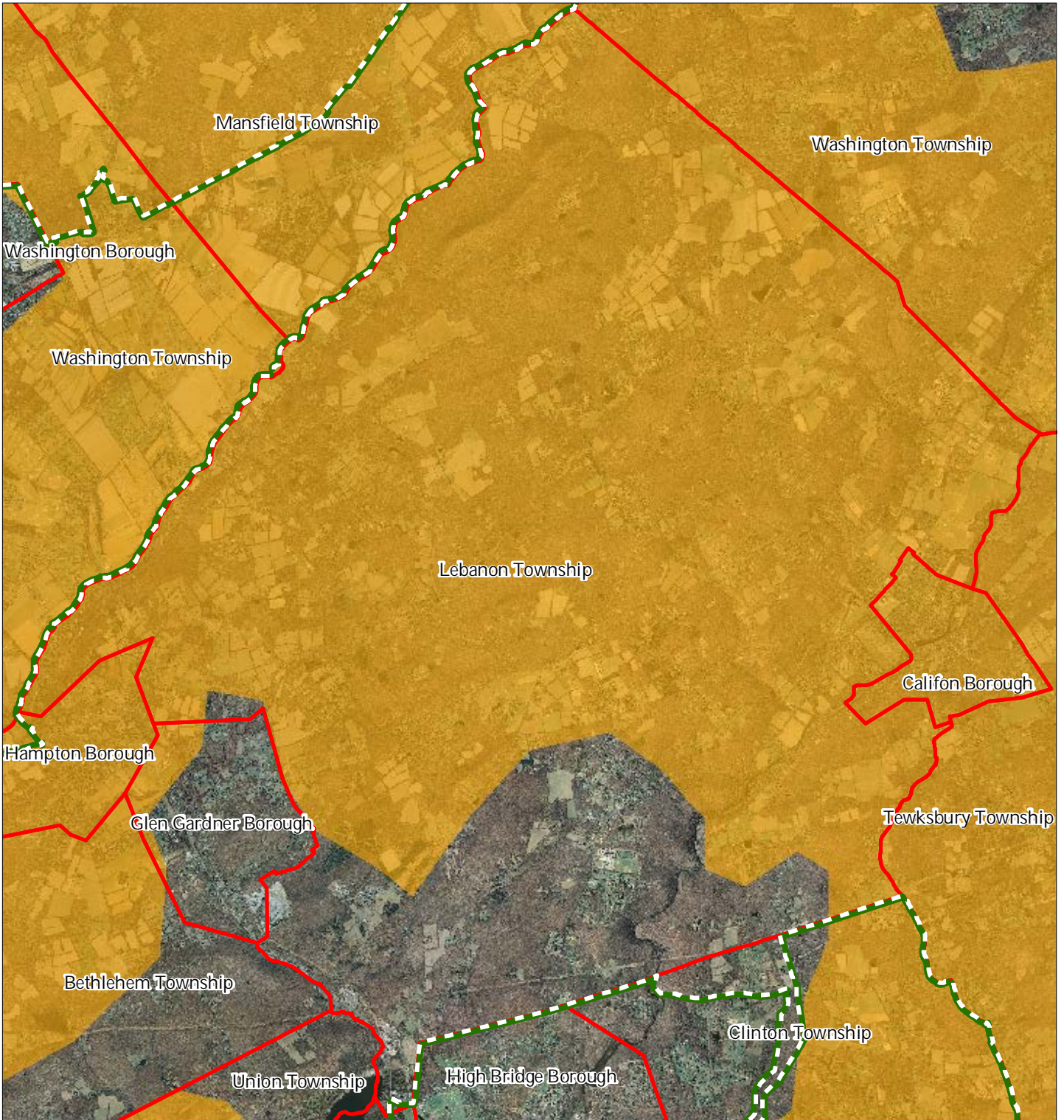
1 inch = 0.968 miles






December 2011

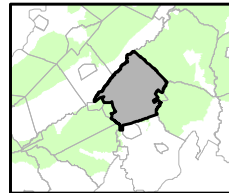
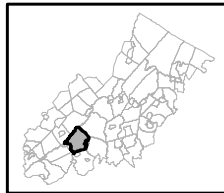


Figure 24: Agricultural Resource Area



-  Agricultural Resource Area
-  Preservation Area
-  Municipal Boundaries

## Lebanon Township



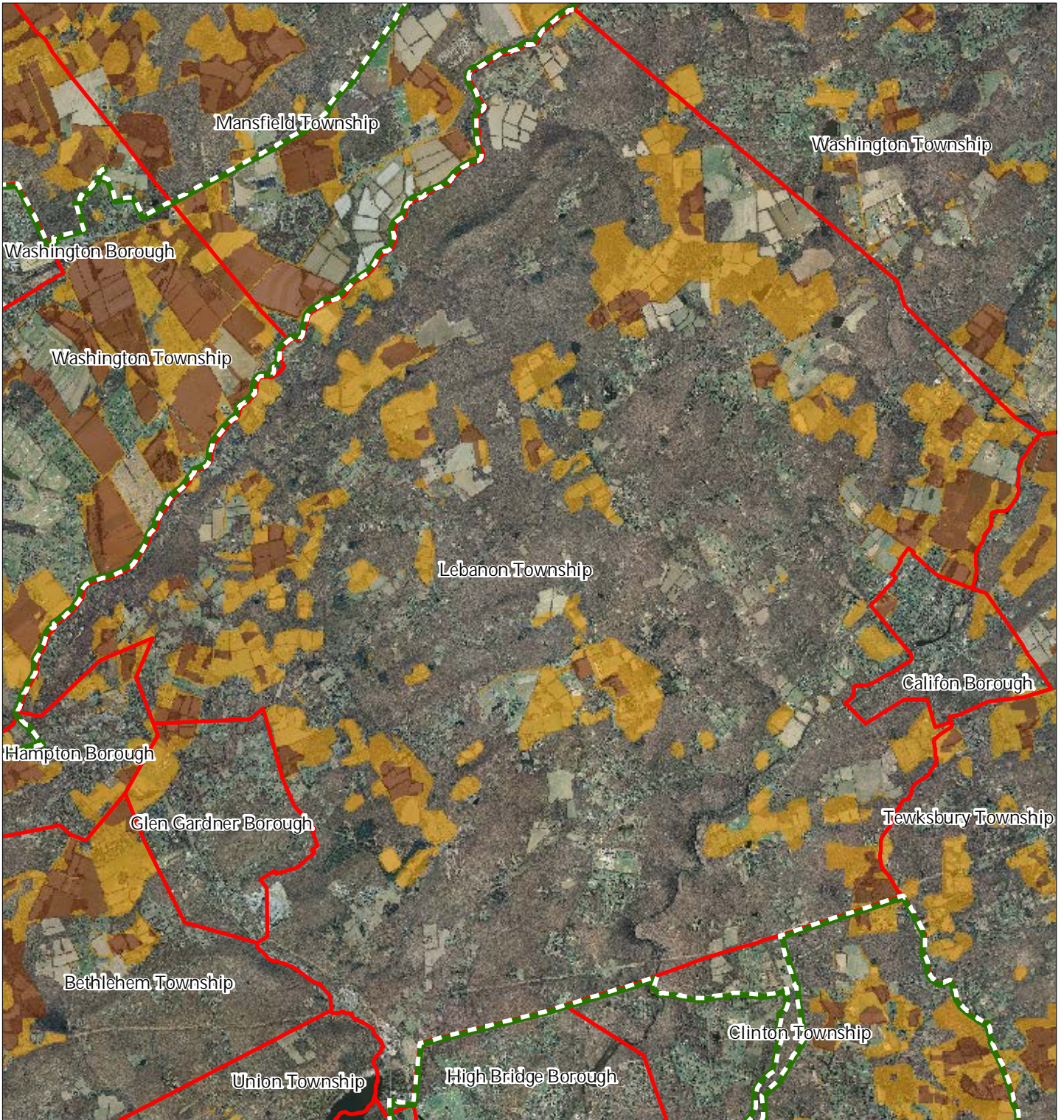
1 inch = 0.968 miles






December 2011



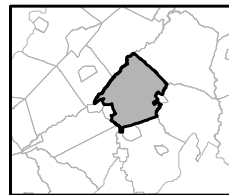
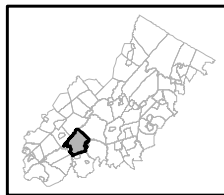
Figure 25: Highlands Agricultural Priority Area



Agricultural Priority Area

-  Moderate
-  High
-  Preservation Area
-  Municipal Boundaries

Lebanon Township



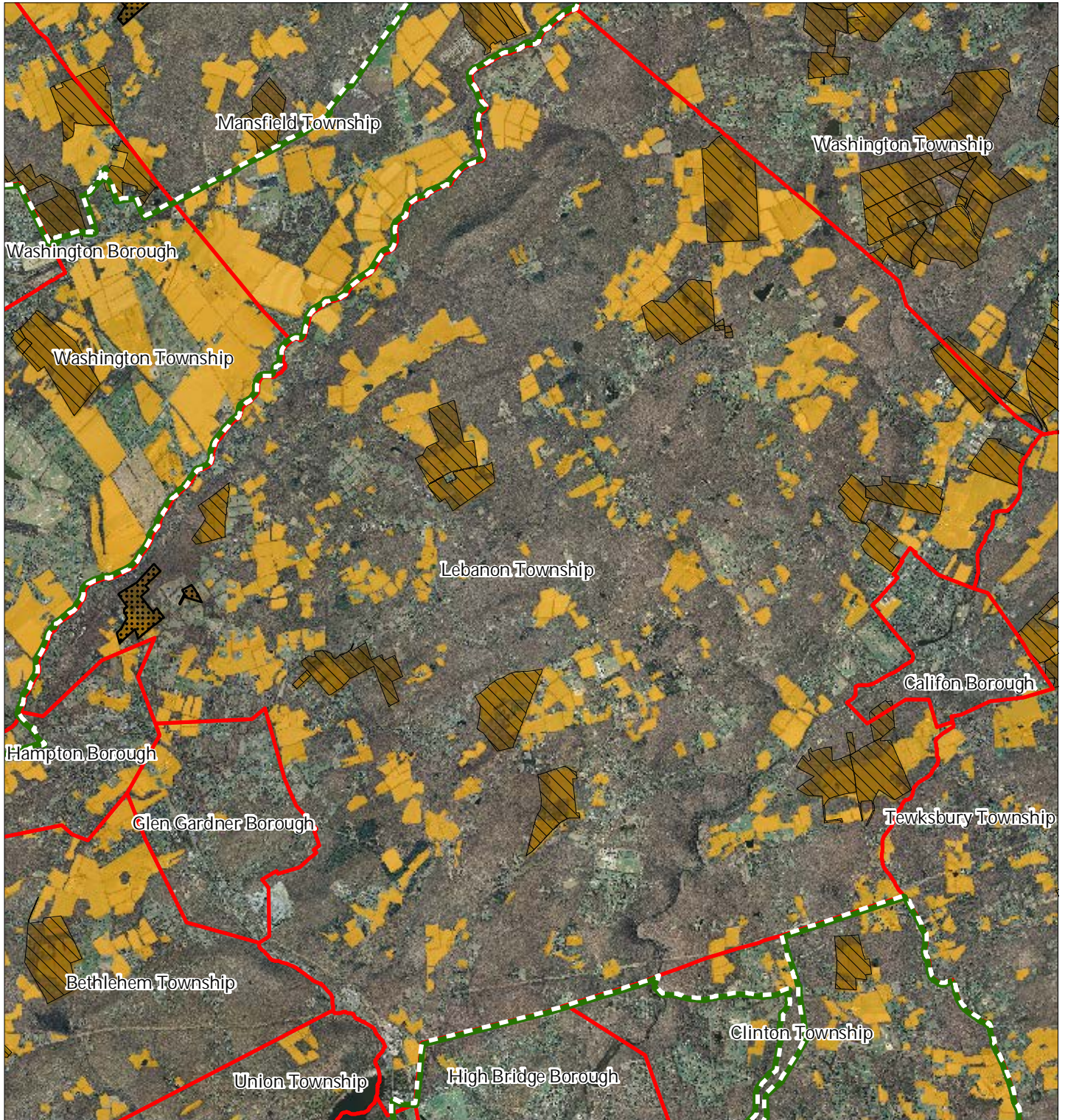
1 inch = 0.968 miles



December 2011



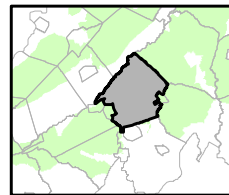
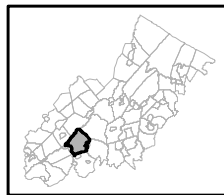
Figure 26: Preserved Farms, SADC Easements, All Agricultural Uses



SADC Easements

-  *SADC Final*
-  Preservation Area
-  *SADC Preserved*
-  Municipal Boundaries
-  Preserved Farmland
-  Agriculture Uses

Lebanon Township



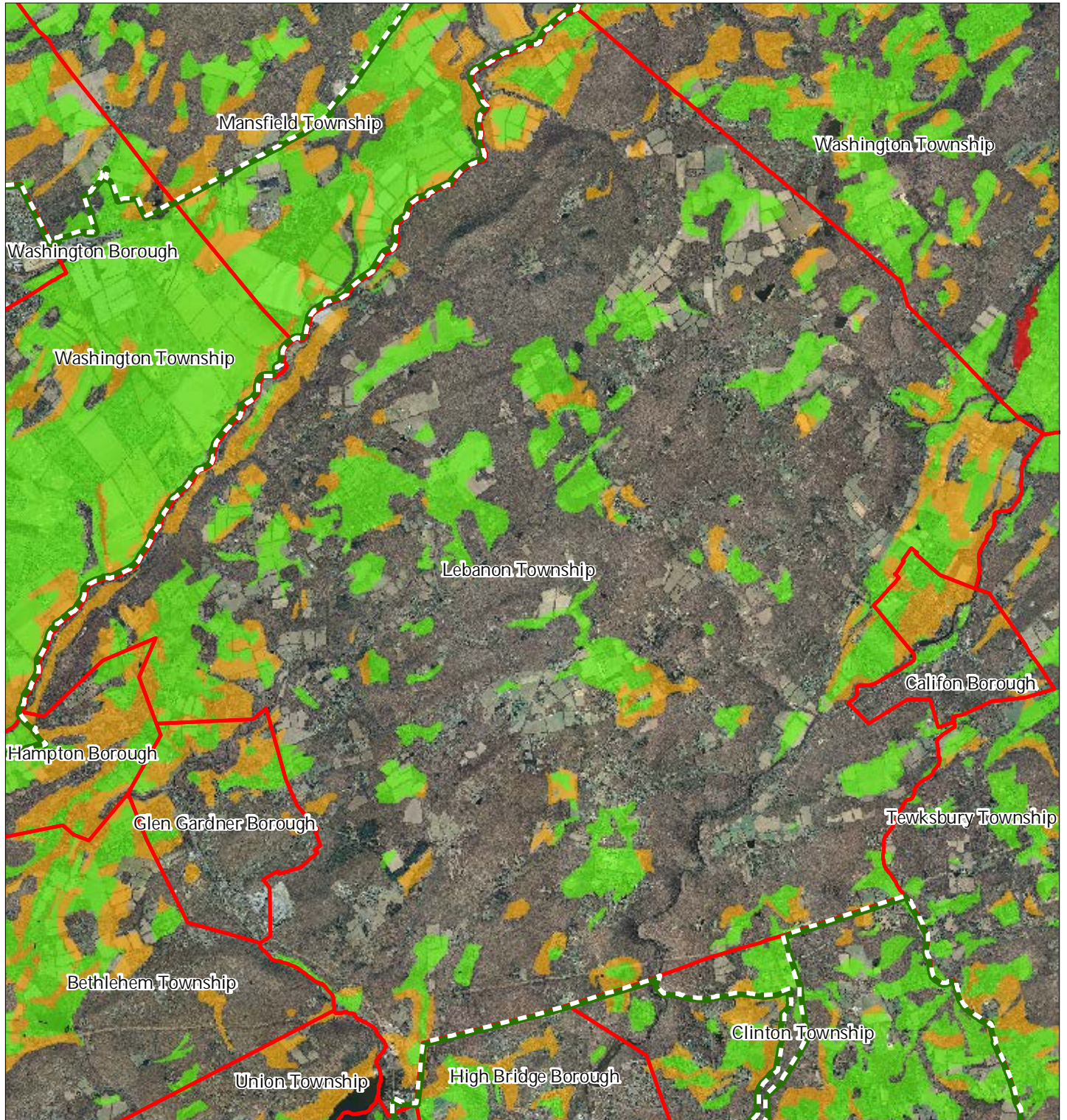
1 inch = 0.968 miles



December 2011



Figure 27: Important Farmland Soils



Important Farmland Soils

- Prime Farmland
- Farmland of Local Importance
- Farmland of Statewide Importance
- Farmland of Unique Importance
- Preservation Area
- Municipal Boundaries

Lebanon Township



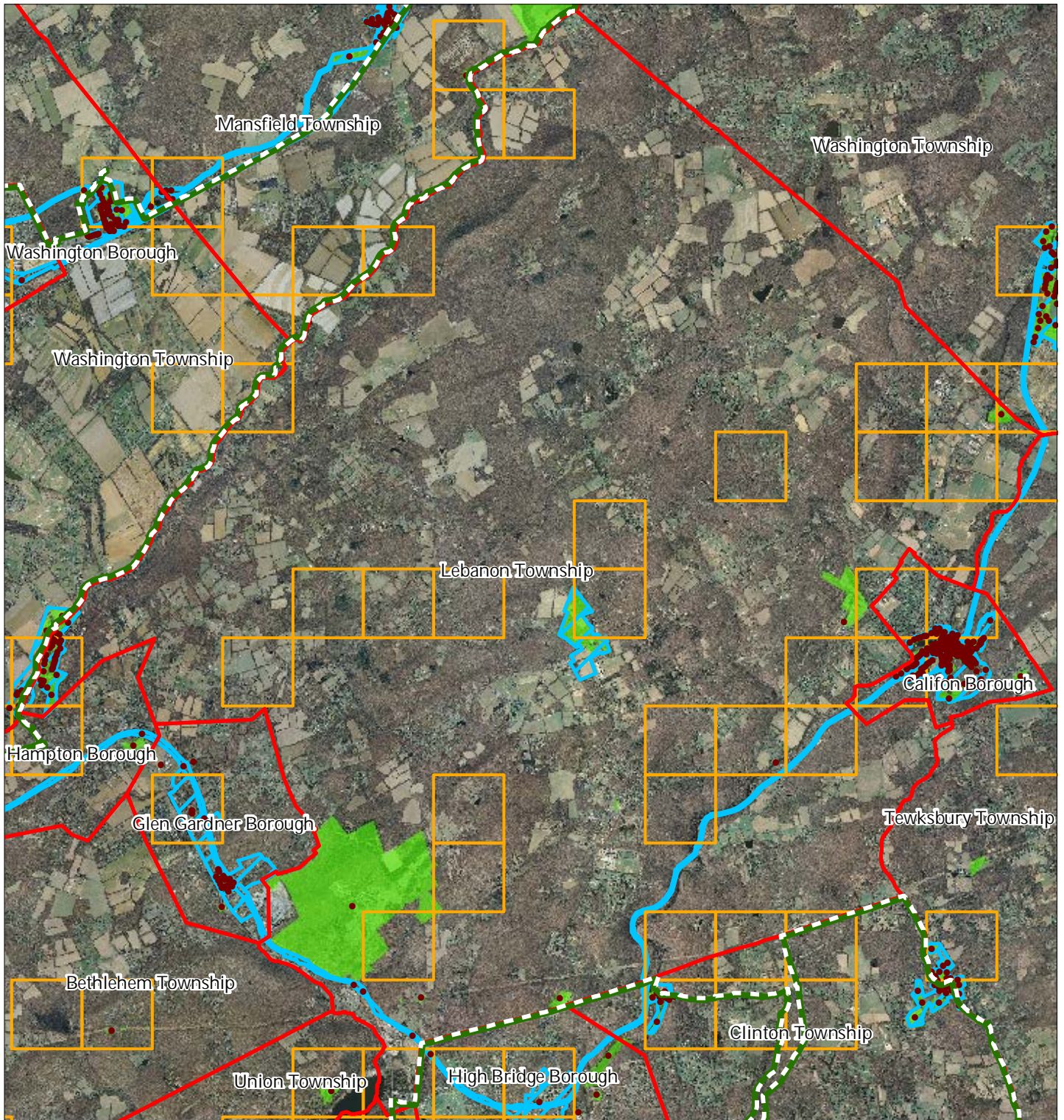
1 inch = 0.968 miles



December 2011

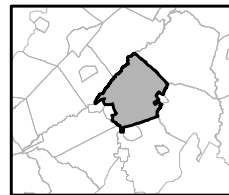
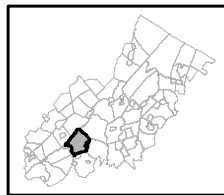


Figure 28: Historic, Cultural, and Archaeological Resources Inventory



-  Preservation Area
-  Municipal Boundaries
-  Archaeological Grids (1 sqmi)
-  NJ Historic Districts
-  Historic Property Points
-  Historic Property Polygons

Lebanon Township



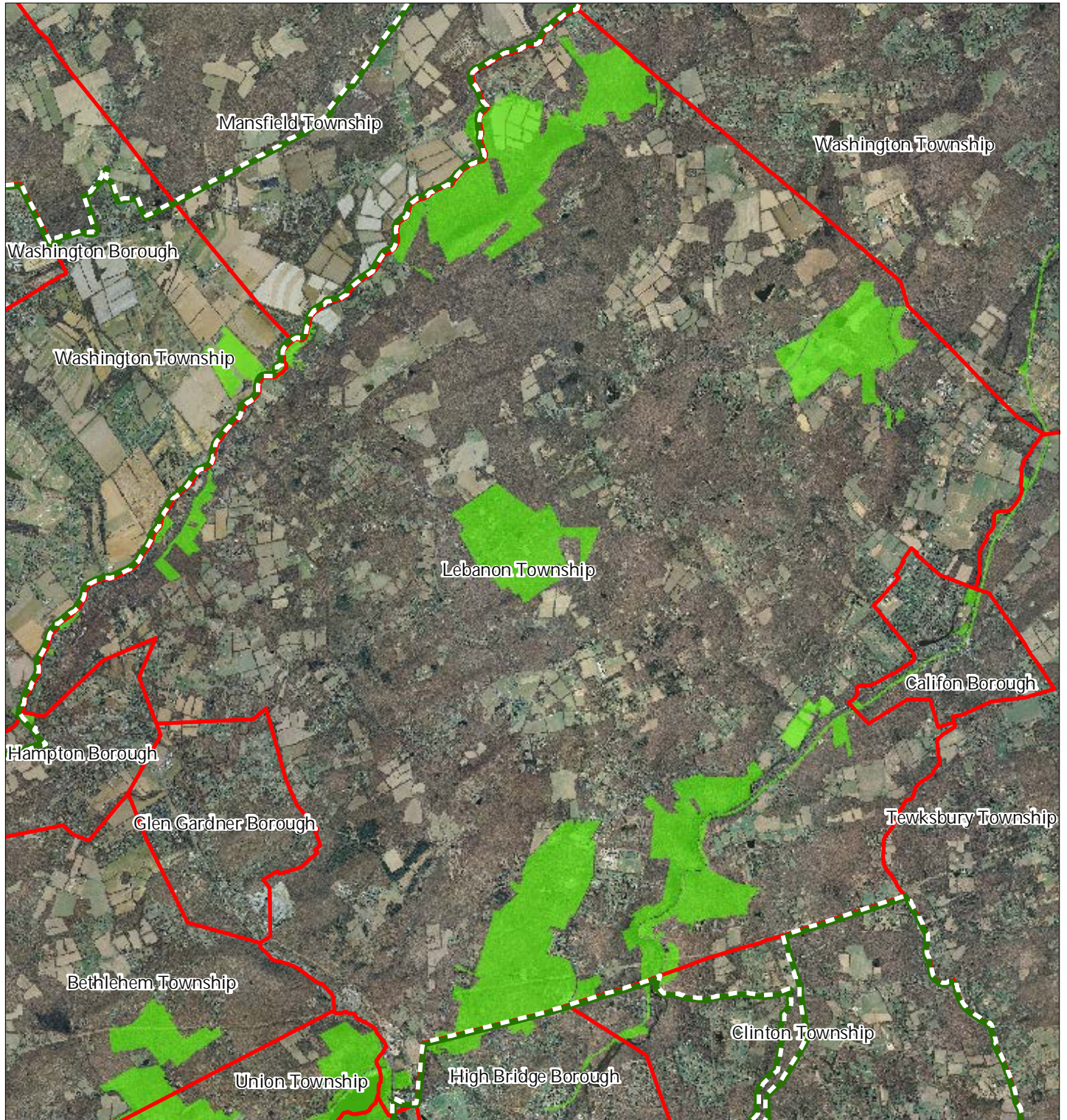
1 inch = 0.968 miles






December 2011

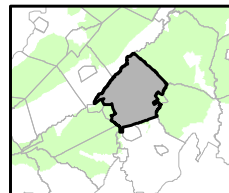
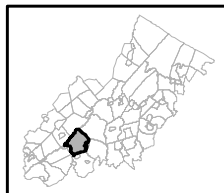


Figure 29: Baseline Scenic Resources Inventory



## Lebanon Township

-  Scenic Resources
-  Municipal Boundaries
-  Preservation Area



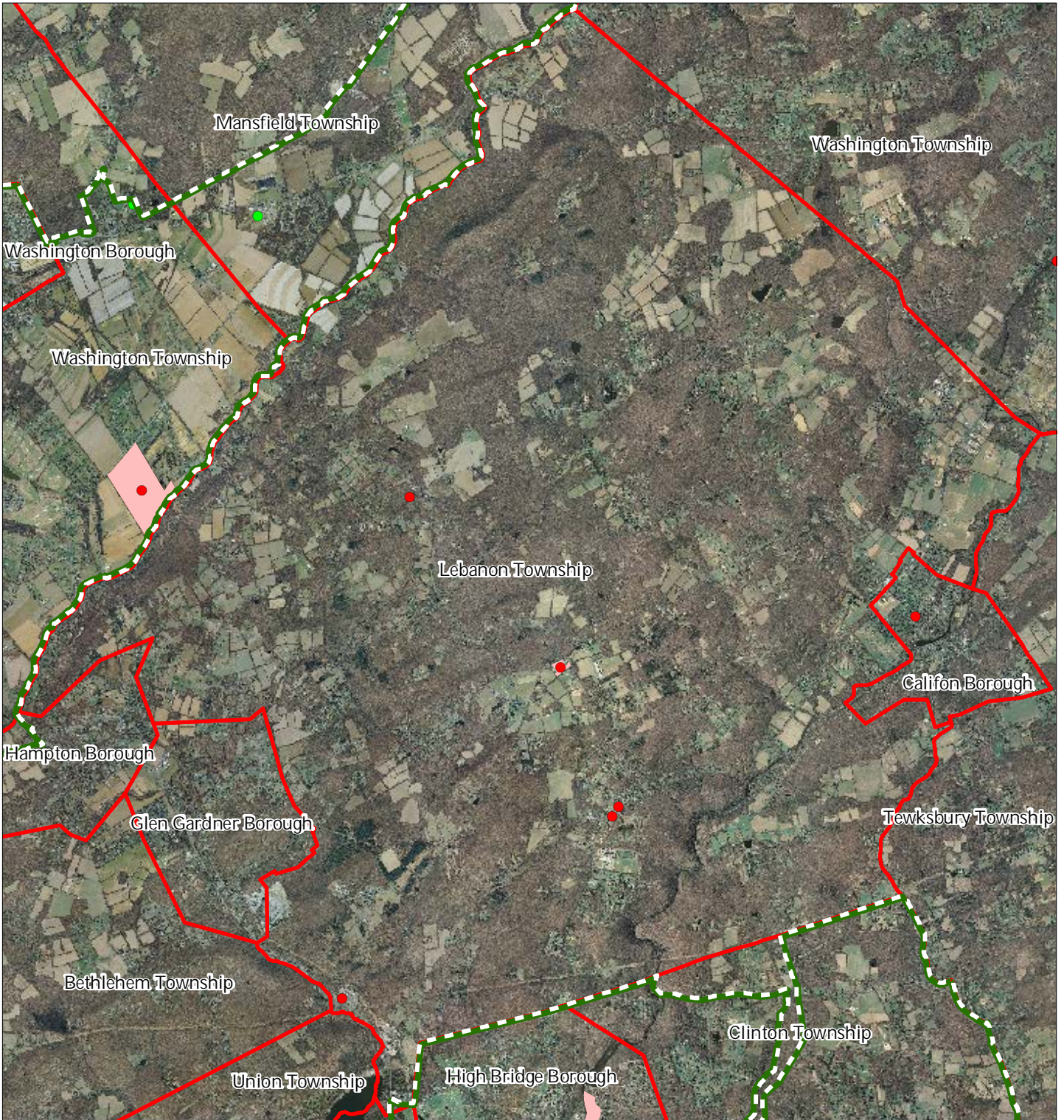
1 inch = 0.968 miles



December 2011



Figure 30: Highlands Contaminated Site Inventory



Highlands Contaminated Site Inventory

Lebanon Township

- Tier 1 Sites
- Tier 1 Sites (Polygons)
- Tier 2 Sites
- ▬ Preservation Area
- ▬ Municipal Boundaries



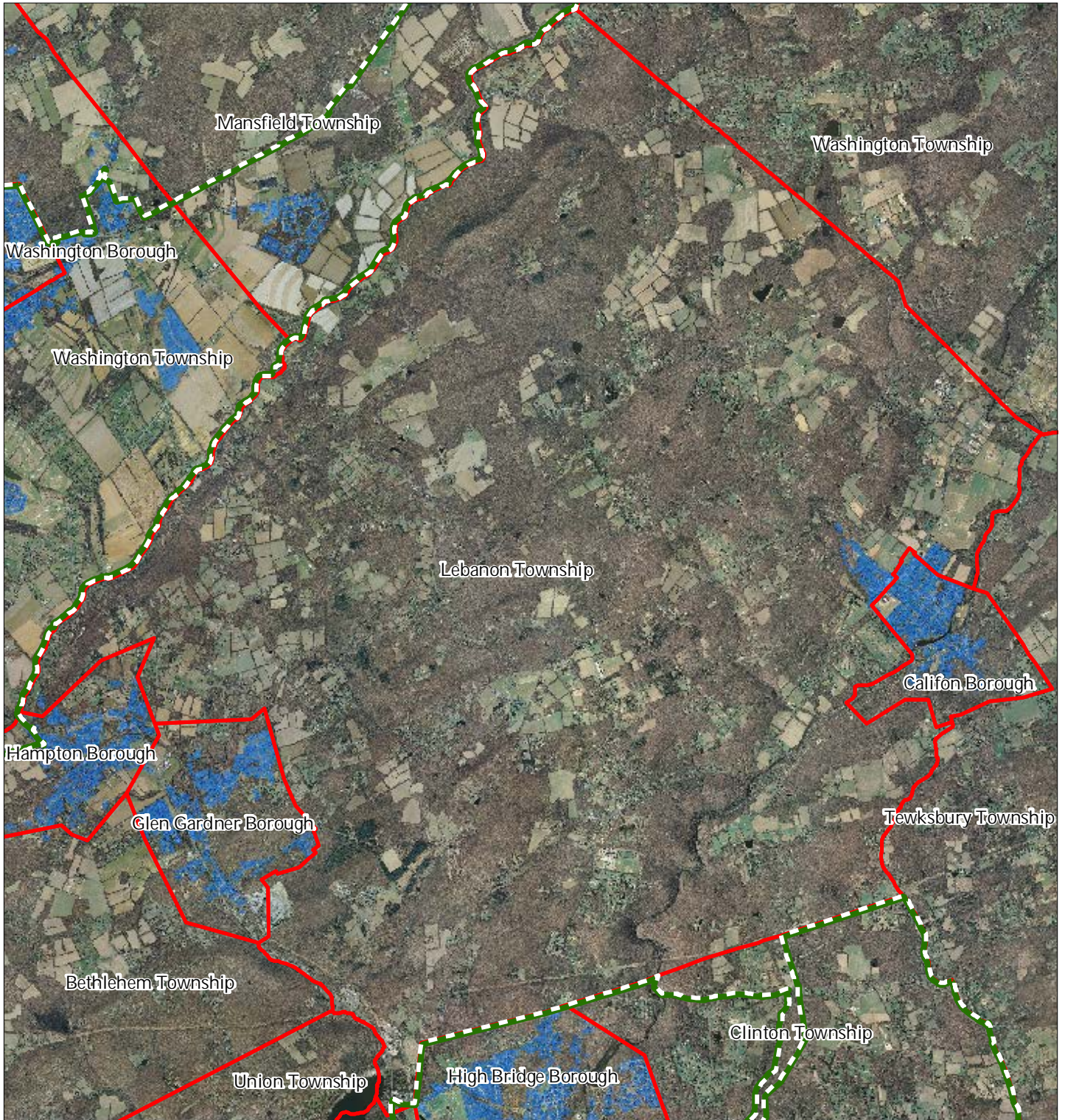
1 inch = 0.968 miles






December 2011

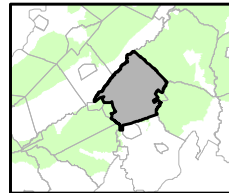
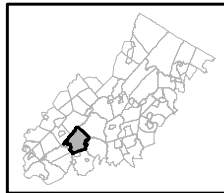


Figure 31: Public Community Water Systems



-  Public Community Water Systems
-  Preservation Area
-  Municipal Boundaries

Lebanon Township



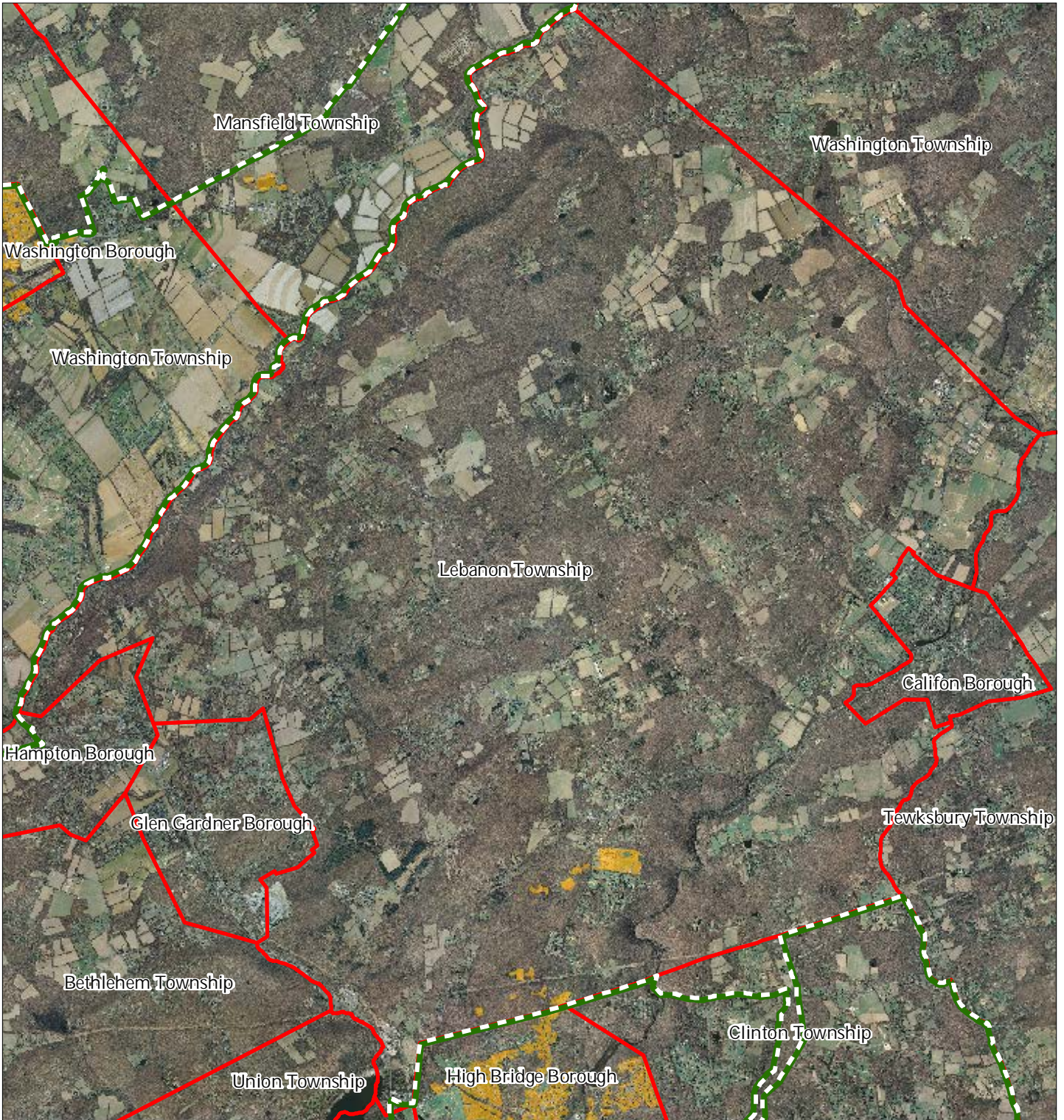
1 inch = 0.968 miles






December 2011



Figure 32: Highlands Domestic Sewerage Facilities



Highlands Domestic Sewerage Facilities

-  Existing Area Served
-  Preservation Area
-  Municipal Boundaries

Lebanon Township



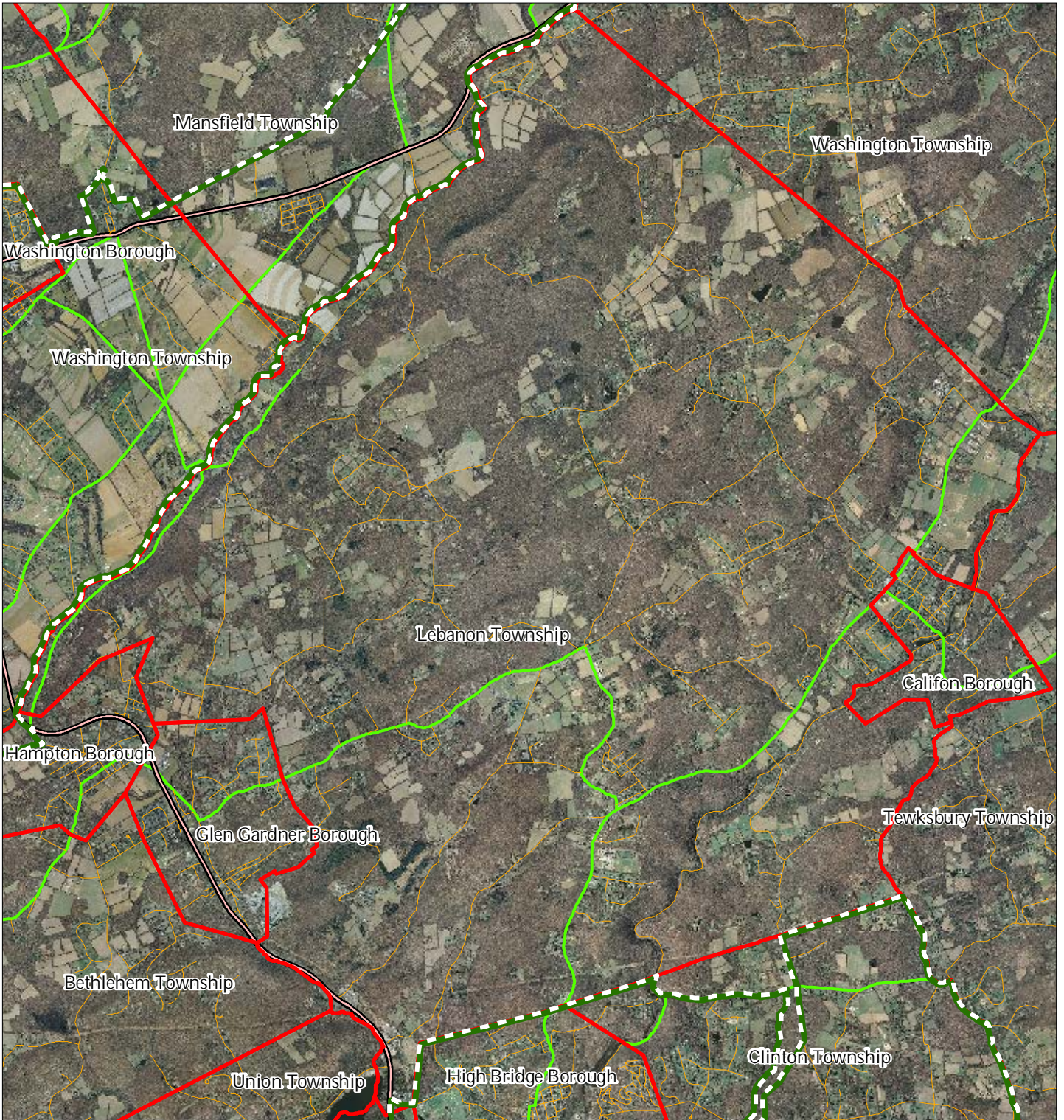
1 inch = 0.968 miles



December 2011



Figure 33: Highlands Roadway Network



Roadway Network

 Interstate Highways

 U.S. Routes

 State Routes

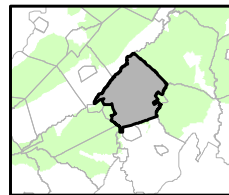
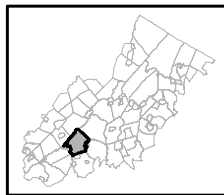
 County Routes

 Local Routes

 Preservation Area

 Municipal Boundaries

Lebanon Township



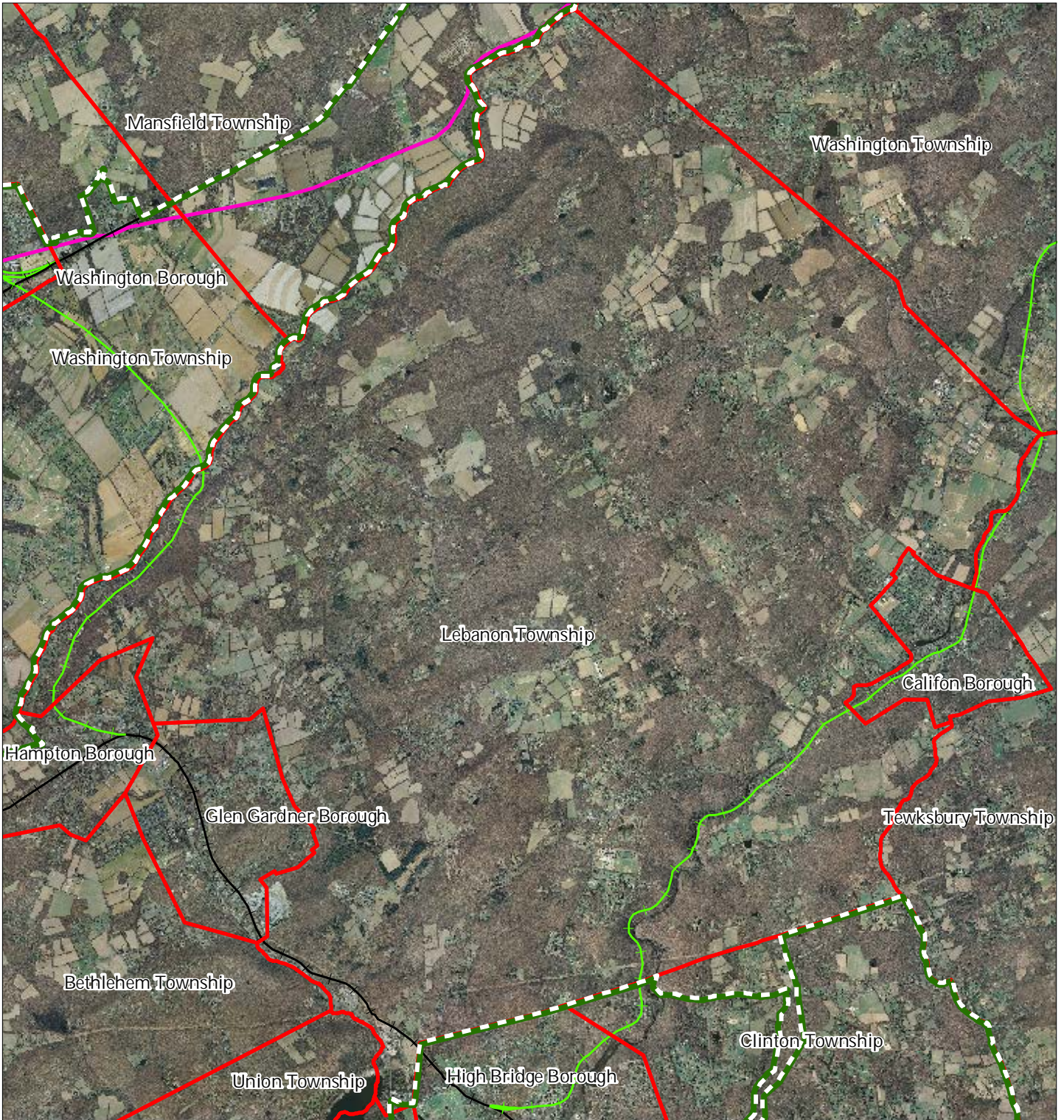
1 inch = 0.968 miles



December 2011

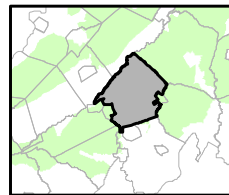


Figure 34: Highlands Transit Network



- |                                |                      |
|--------------------------------|----------------------|
| <b>Rail Network</b>            | Rail Stations        |
| Boonton Line                   | Park and Ride Sites  |
| Main Line & Bergen County Line | Private Bus Lines    |
| Morris and Essex Line          | NJ Transit Bus Lines |
| Raritan Valley Line            | Airports             |
| <b>Freight Rail Lines</b>      |                      |
| Freight Rail Lines             |                      |
| Abandoned Freight Rail         |                      |

Lebanon Township



1 inch = 0.968 miles



December 2011