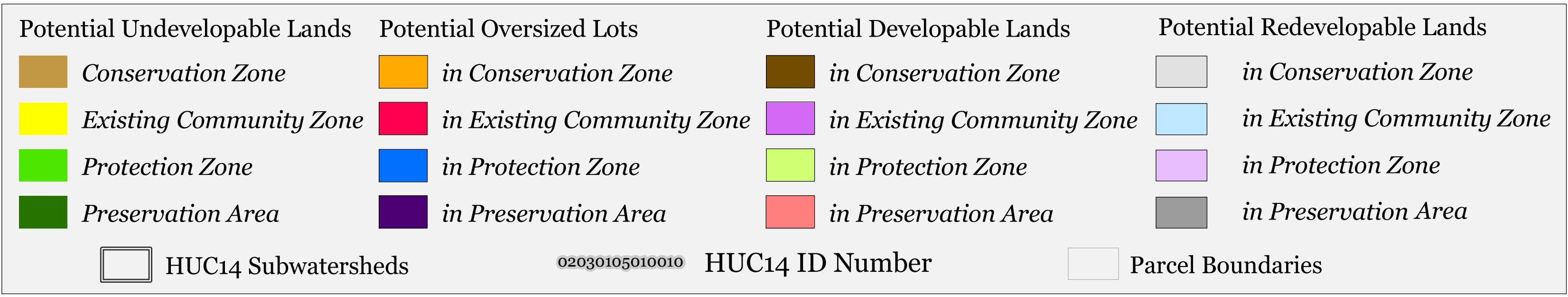


Figure 1: Municipal Build-out Report Septic System Yield by HUC14 and LUCM Zone *
ROXBURY TOWNSHIP



* Refer to Table 1 for Septic System Yield values, indexed by HUC14 ID

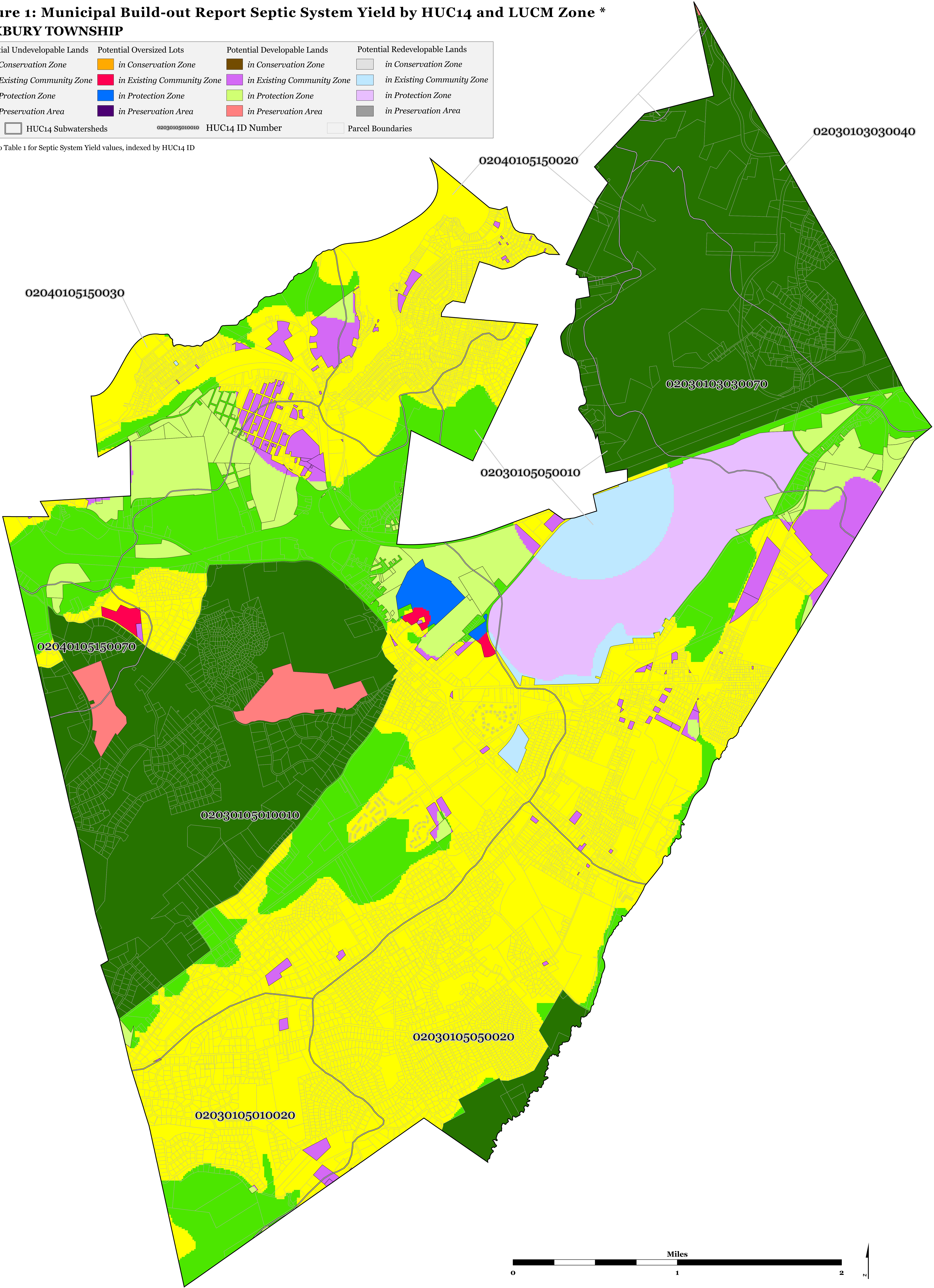


Figure 2: Municipal Build-out Report Environmental Constrained Lands
ROXBURY TOWNSHIP

Highlands Build-Out Environmental Constrained Lands

Constraints:

Highlands Open Water Buffers (300ft)

Flood Prone Areas

Steep Slopes (Moderate and Severe)

Potential Oversized Lots

Potential Developable Lots

Potential Redevelopable Lots

Preservation Area

Parcel Boundaries

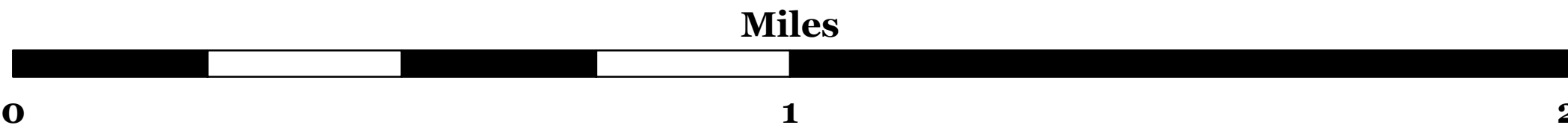
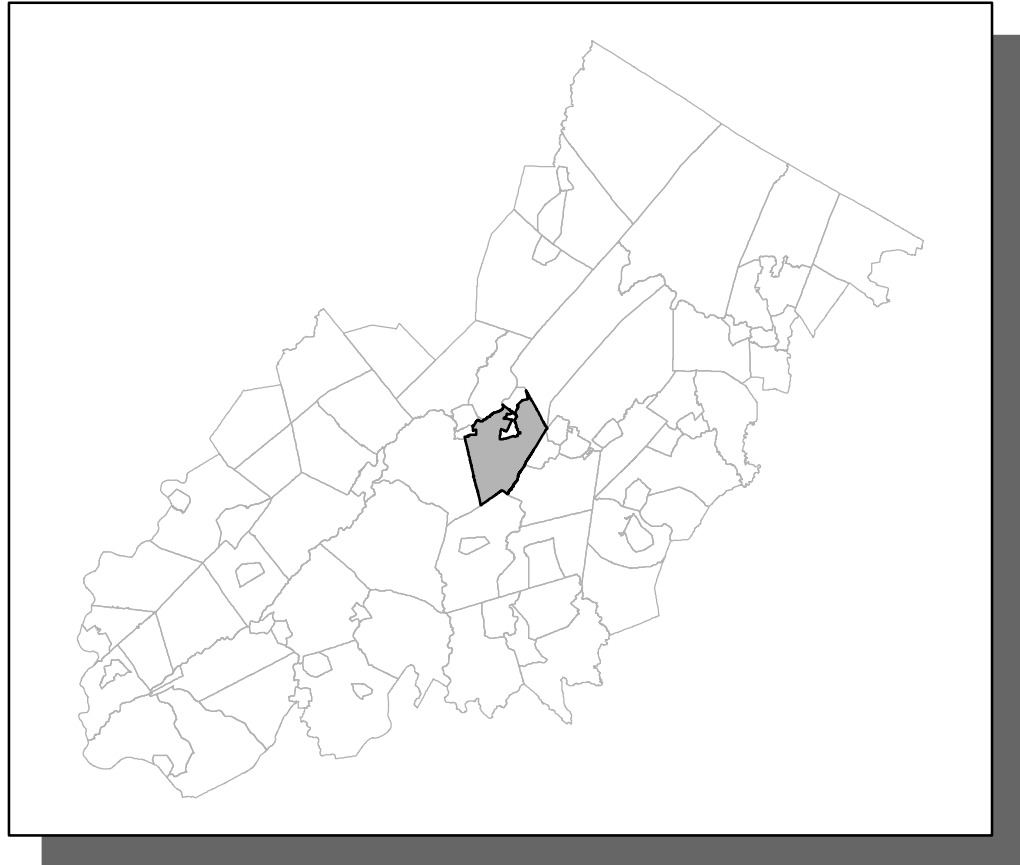


Figure 3: Municipal Build-out Report HDSF Wastewater Utilities
ROXBURY TOWNSHIP

Highlands Domestic Sewerage Facilities Existing Area Served

<div></div> <i>Ajax Terrace WPCP</i>	<div></div> Potential Oversized Lots
<div></div> <i>Musconetcong SA</i>	<div></div> Potential Developable Lots
<div></div> HUC14 Subwatersheds	<div></div> Potential Redevelopable Lots
<div></div> Preservation Area	<div></div> Parcel Boundaries

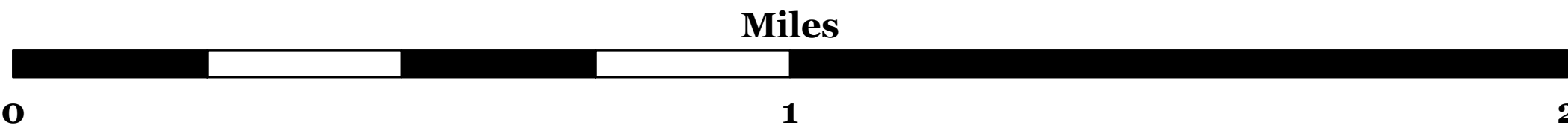
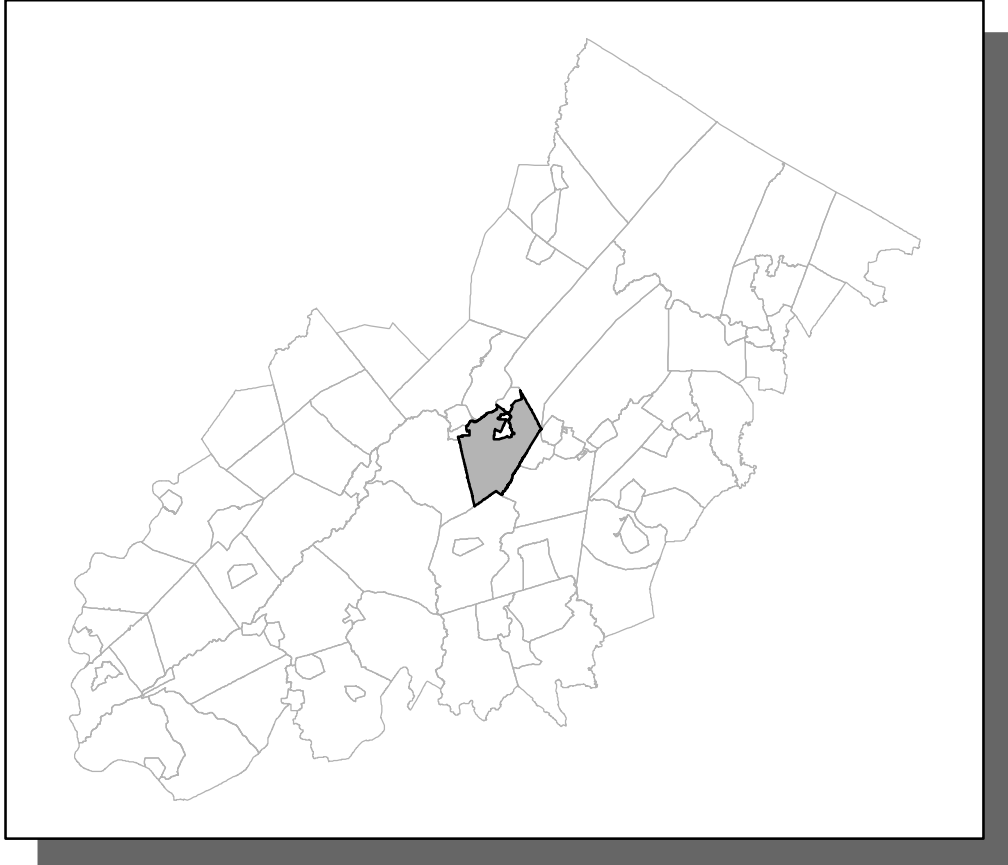
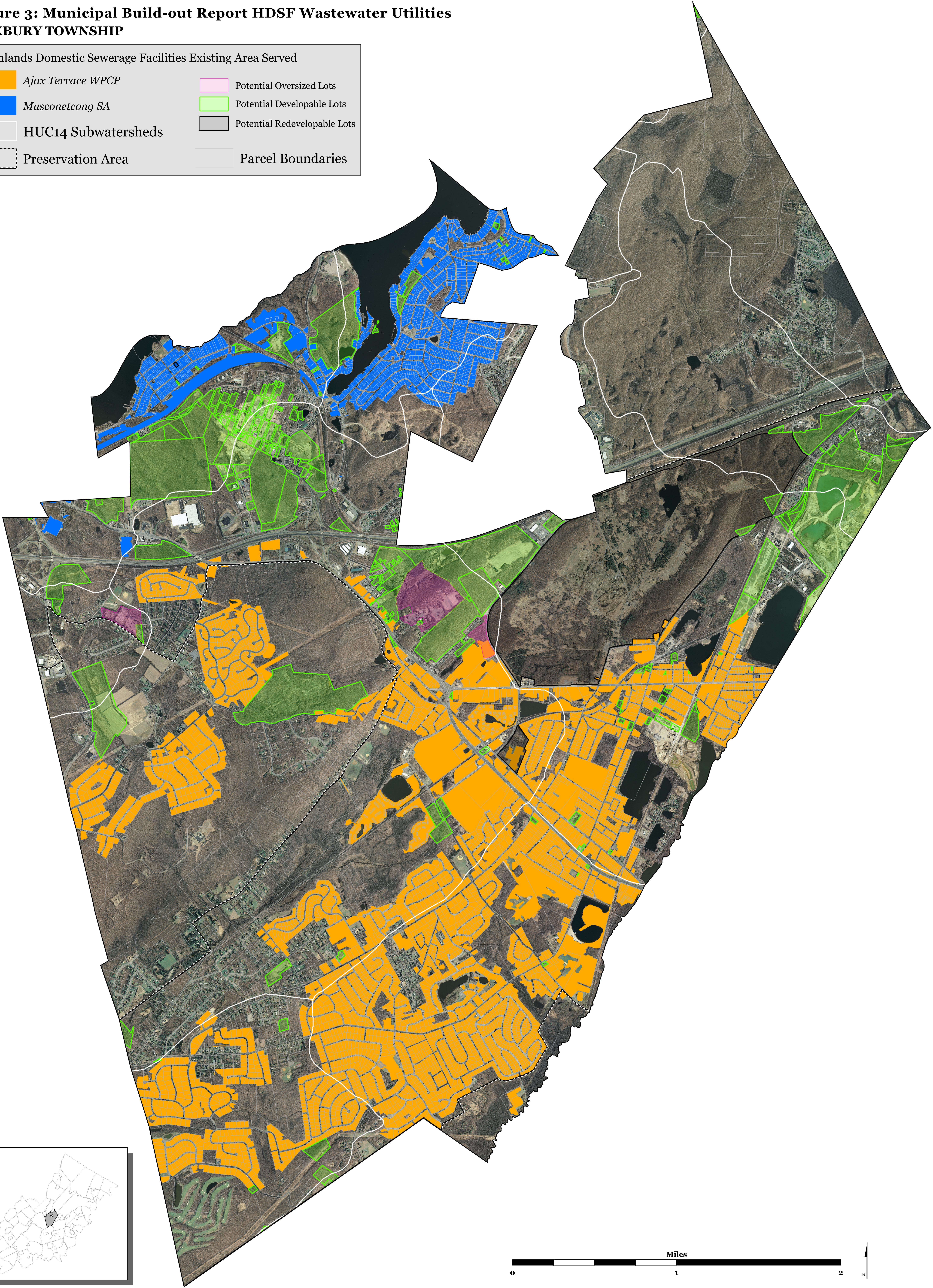


Figure 4: Municipal Build-out Report Public Community Water System Utilities
ROXBURY TOWNSHIP

Public Community Water Systems Existing Area Served

<div></div>	<i>Roxbury Water Company</i>
<div></div>	<i>Roxbury Township Water Department</i>
<div></div>	<i>Netcong Water Department</i>
<div></div>	HUC14 Subwatersheds
<div></div>	Potential Oversized Lots
<div></div>	Potential Developable Lots
<div></div>	Potential Redevelopable Lots
<div></div>	Preservation Area
<div></div>	Parcel Boundaries

