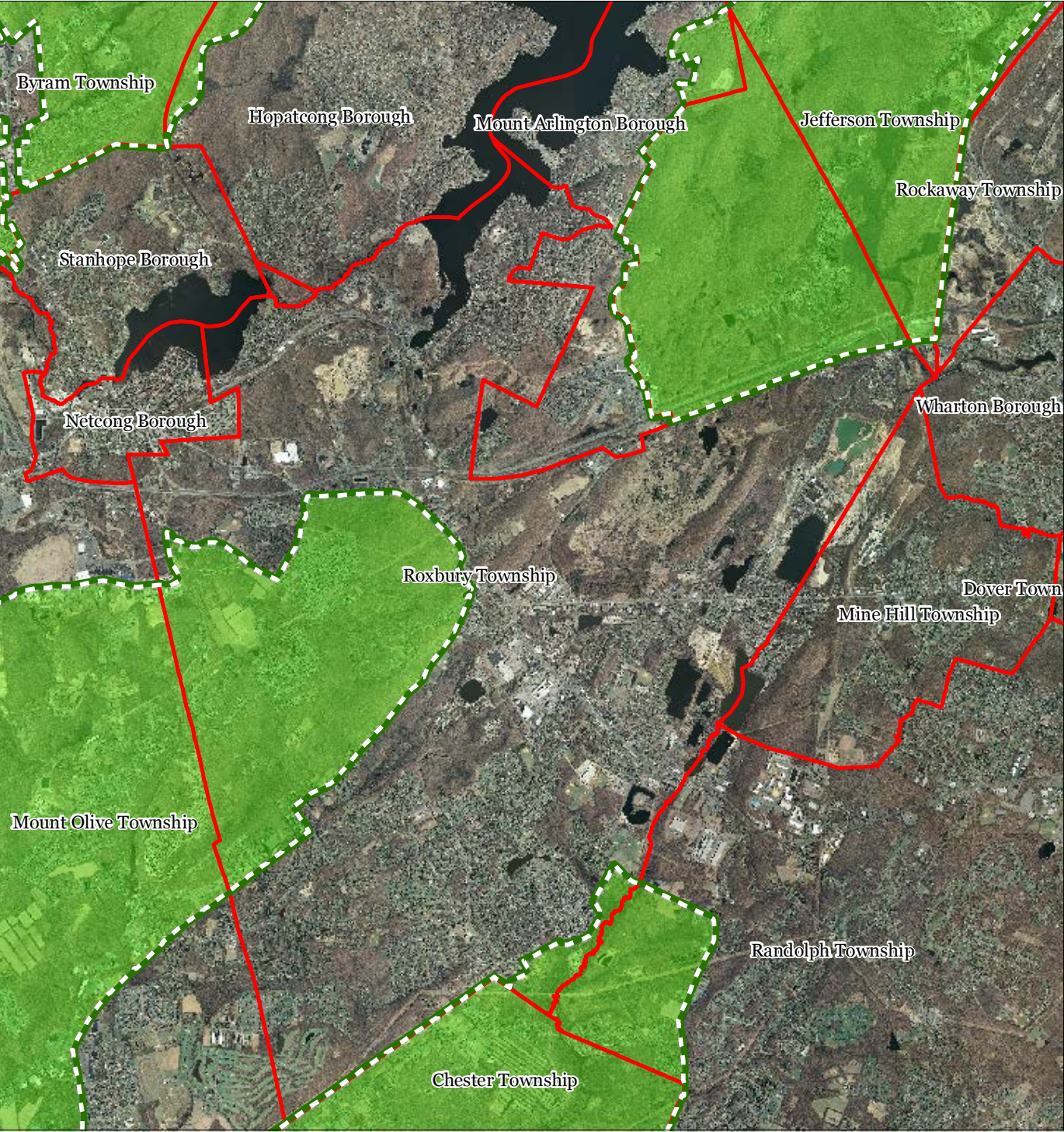
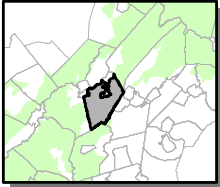
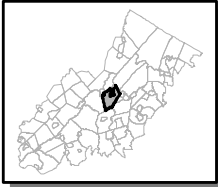


Figure 1: Preservation Area



-  Preservation Area
-  Municipal Boundaries

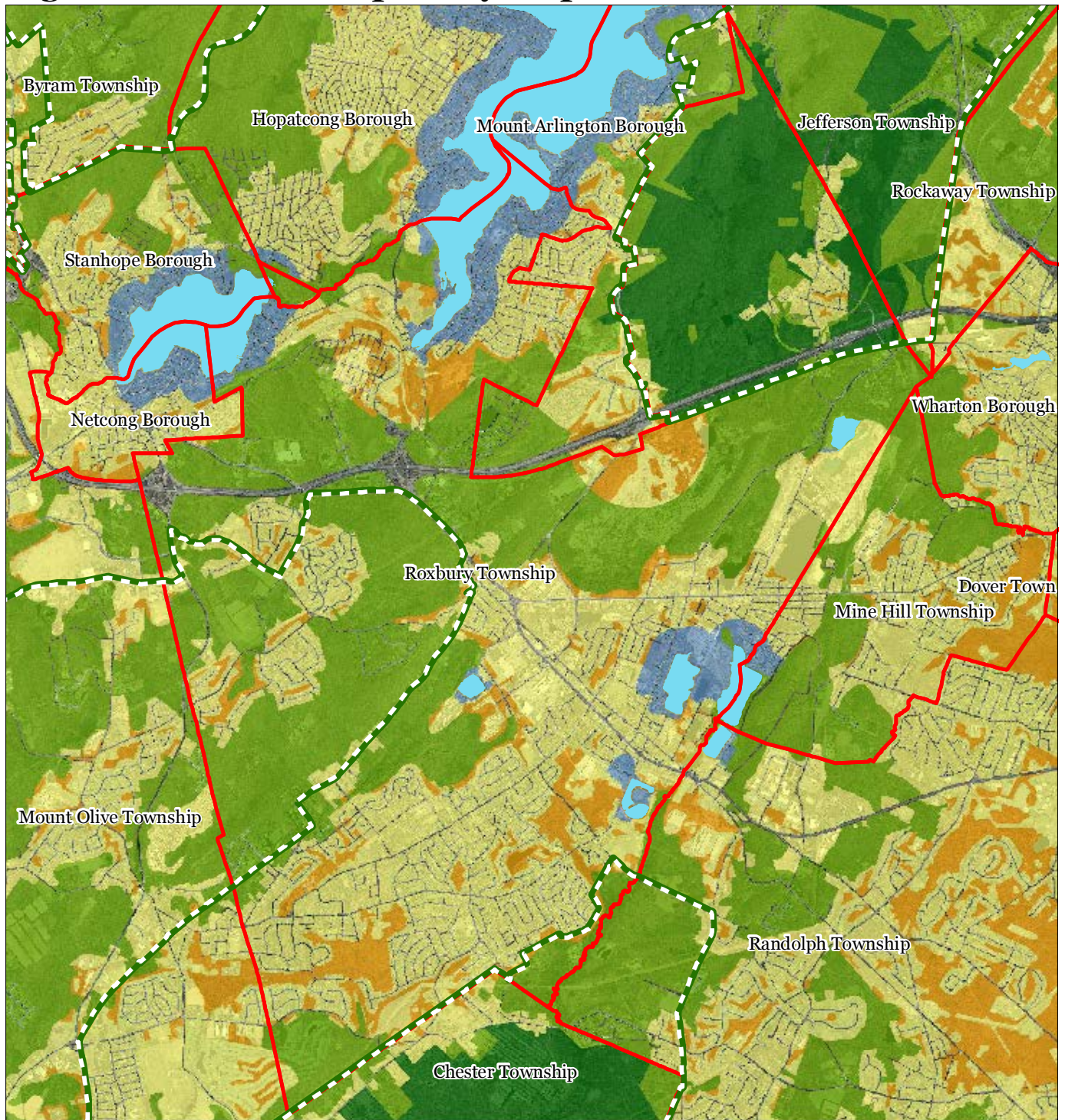
Roxbury Township



1 inch = 0.923 miles



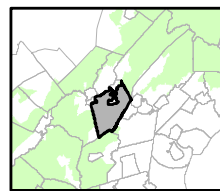
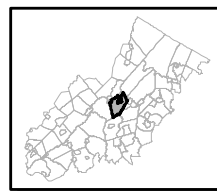
Figure 2: Land Use Capability Map Zones



Regional Master Plan Overlay Zone Designation

- | | |
|--|-----------------------------|
| Zone | |
| Protection | Lakes Greater Than 10 acres |
| Conservation | Preservation Area |
| Existing Community | Municipal Boundaries |
| Sub-Zone | |
| Existing Community Environmentally Constrained | |
| Conservation Environmentally Constrained | |
| Lake Community | |
| Wildlife Management | |

Roxbury Township



1 inch = 0.923 miles



Figure 3: HUC 14 Boundaries

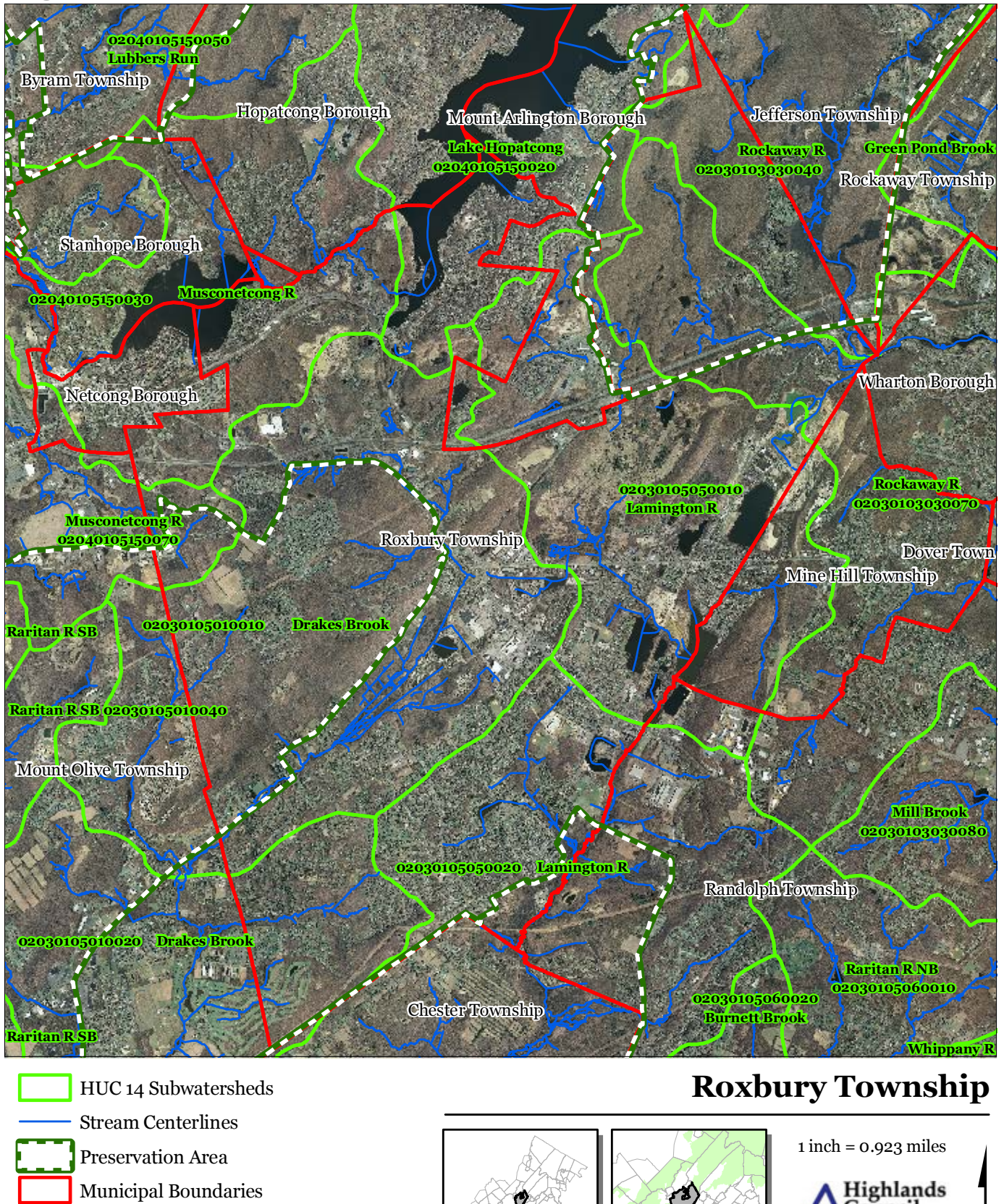
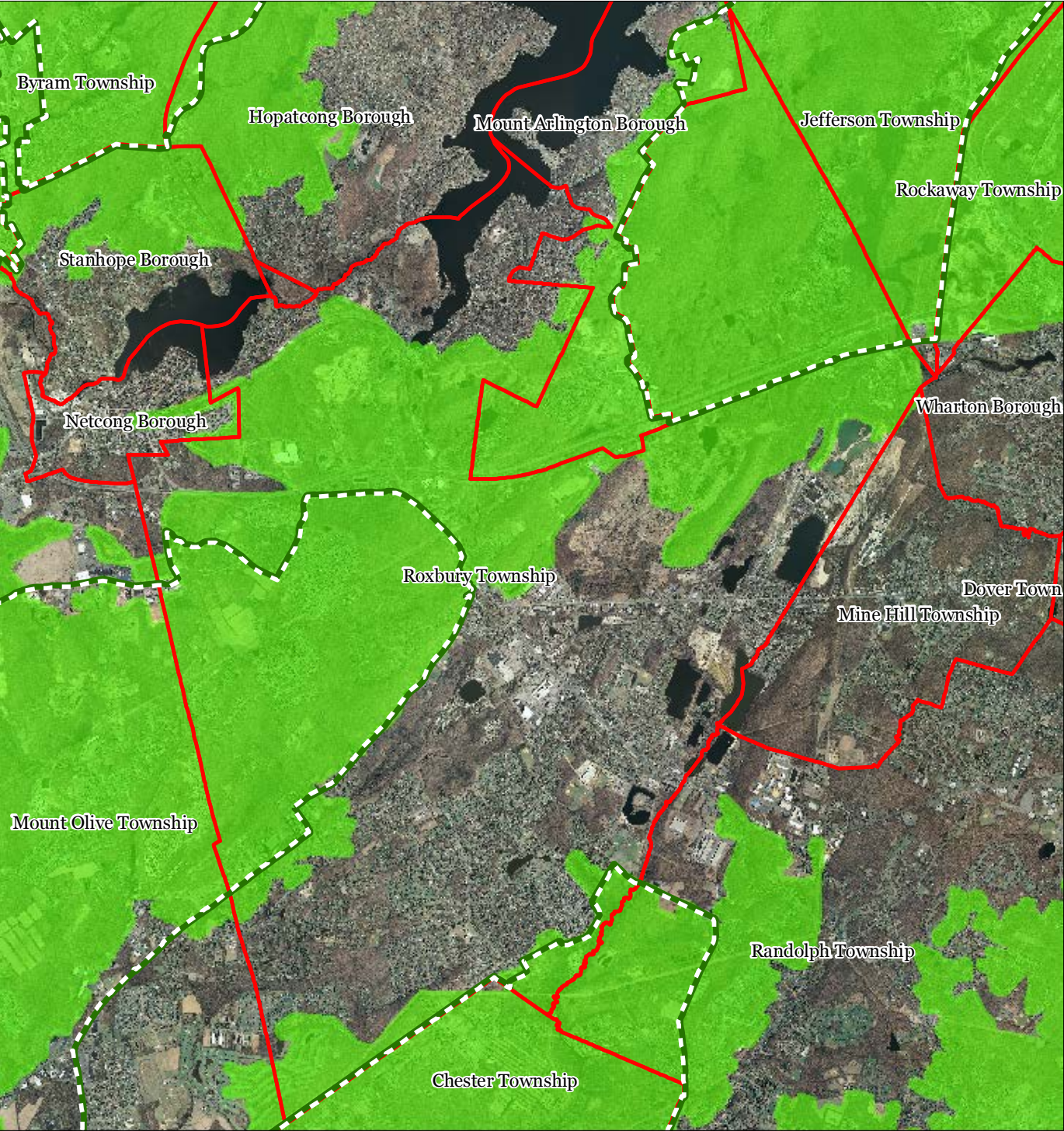
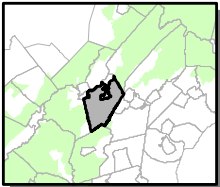
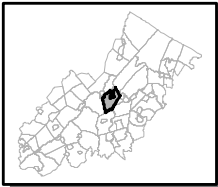


Figure 4: Forest Resource Area



- Forest Resource Area
- Preservation Area
- Municipal Boundaries

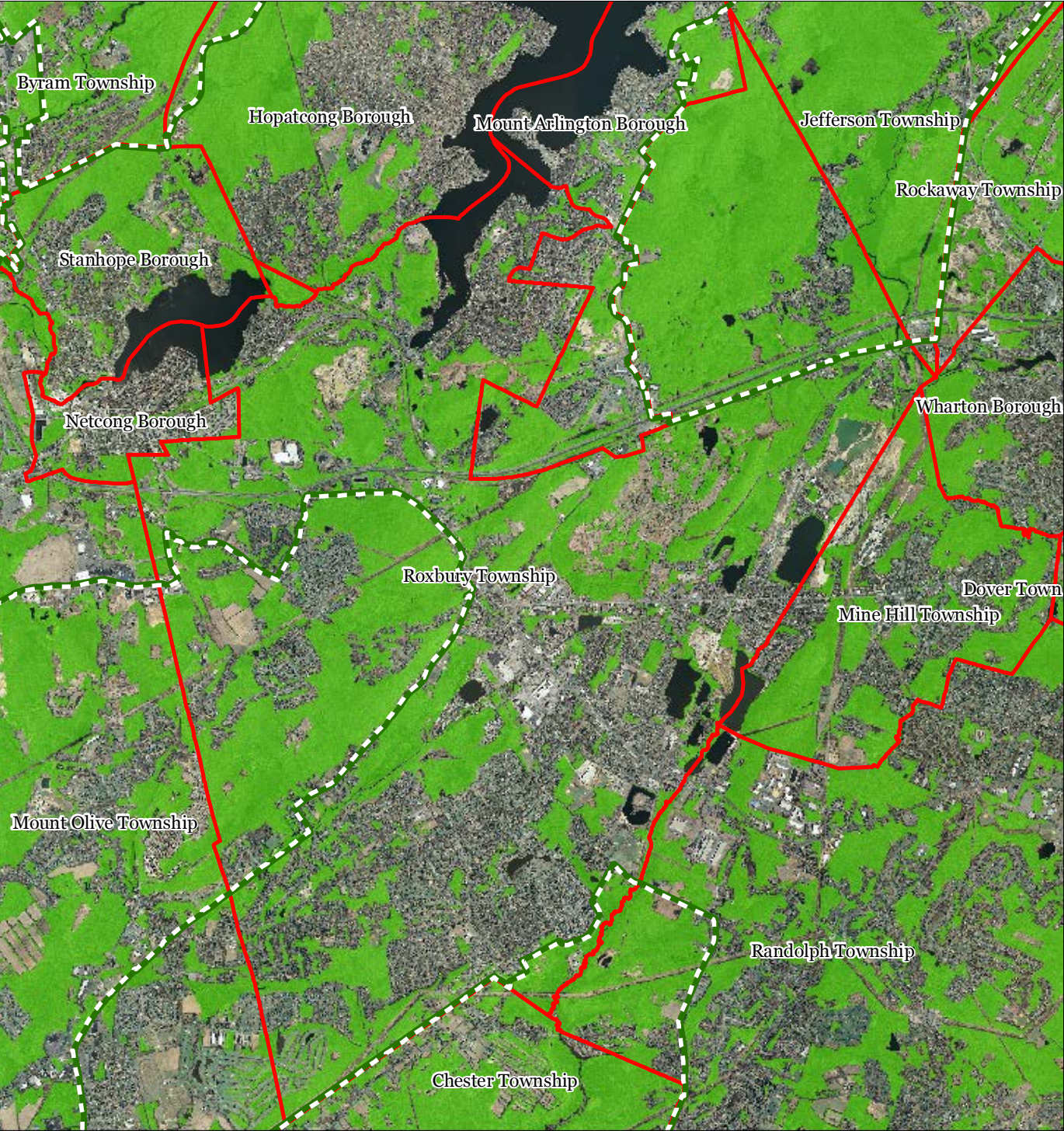
Roxbury Township



1 inch = 0.923 miles

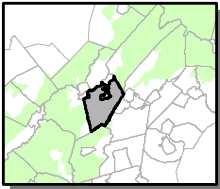
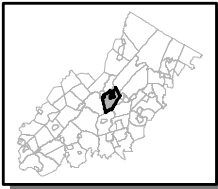


Figure 5: Total Forest Area



- Forested Areas
- Preservation Area
- Municipal Boundaries

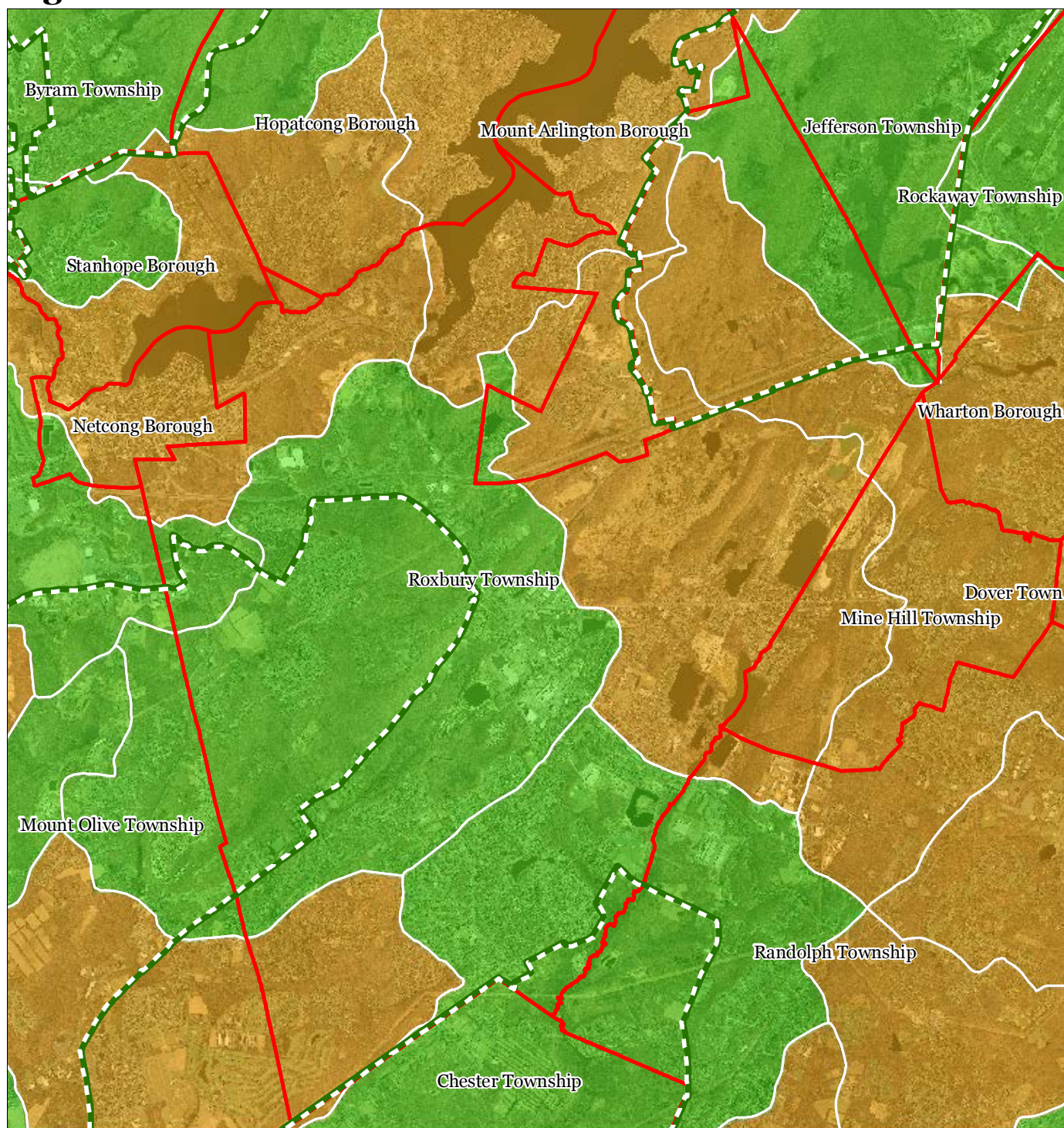
Roxbury Township



1 inch = 0.923 miles



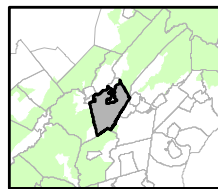
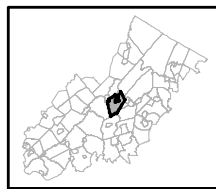
Figure 6: Forest Subwatersheds



Forest Integrity by HUC14 Subwatershed

- Low
- Moderate
- High
- Preservation Area
- Municipal Boundaries

Roxbury Township

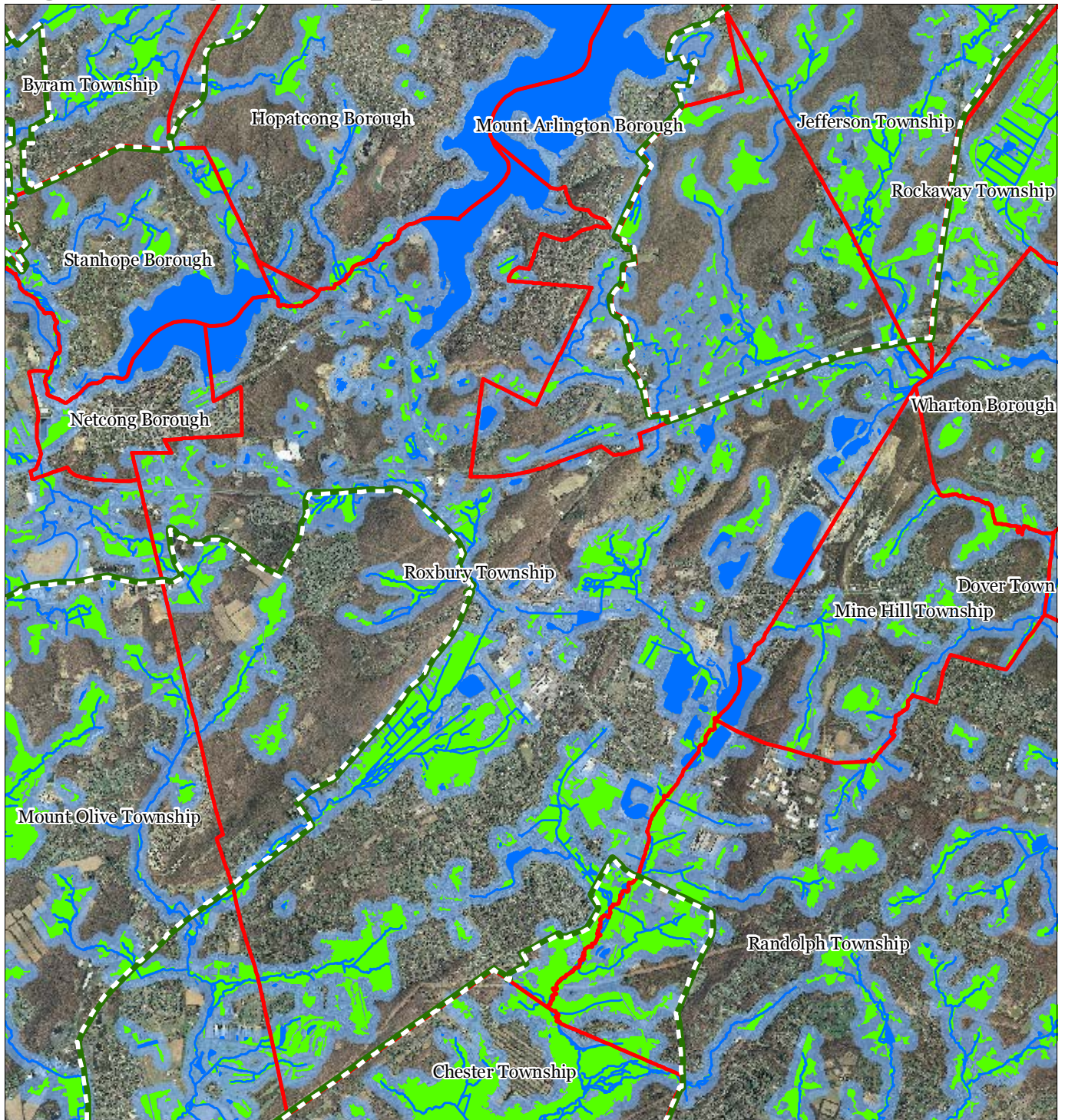


1 inch = 0.923 miles



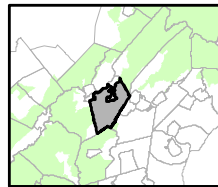
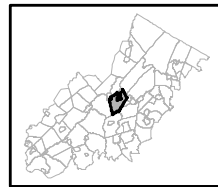
September 2013

Figure 7: Highlands Open Waters



-  Highlands Open Water Buffers (300ft)
-  Streams
-  Wetlands
-  Lakes & Ponds
-  Preservation Area
-  Municipal Boundaries

Roxbury Township

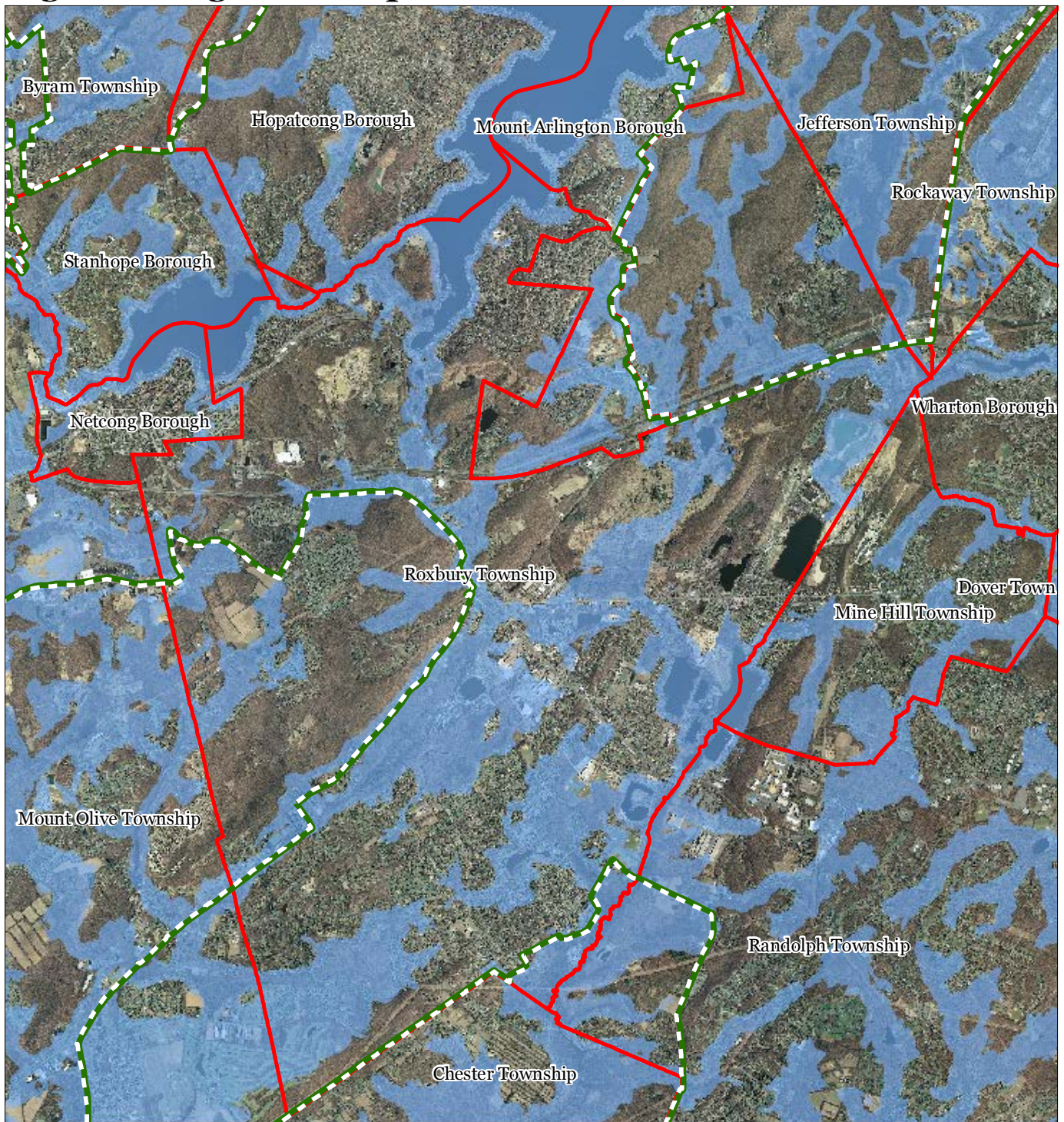


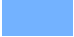


1 inch = 0.923 miles



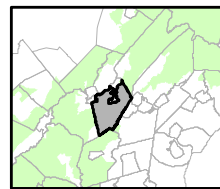
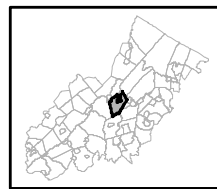
September 2013

Figure 8: Highlands Riparian Areas



-  Riparian Area
-  Preservation Area
-  Municipal Boundaries

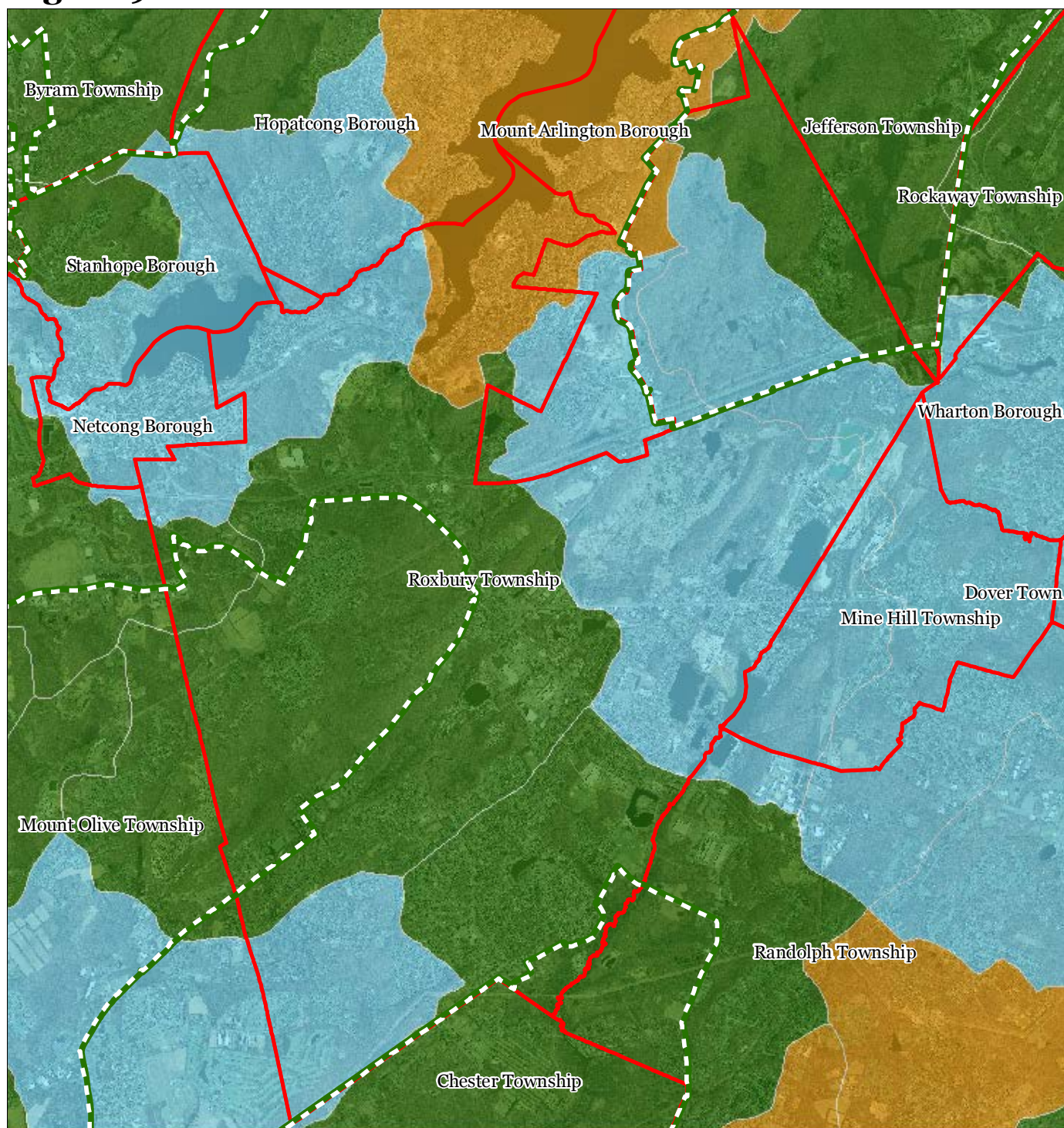
Roxbury Township



1 inch = 0.923 miles



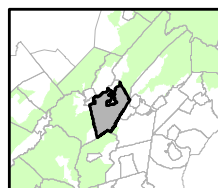
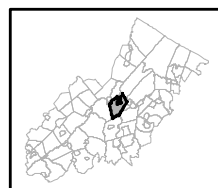
Figure 9: Watershed Values



Watershed Values by HUC14 Subwatershed

- Low
- Moderate
- High
- Preservation Area
- Municipal Boundaries

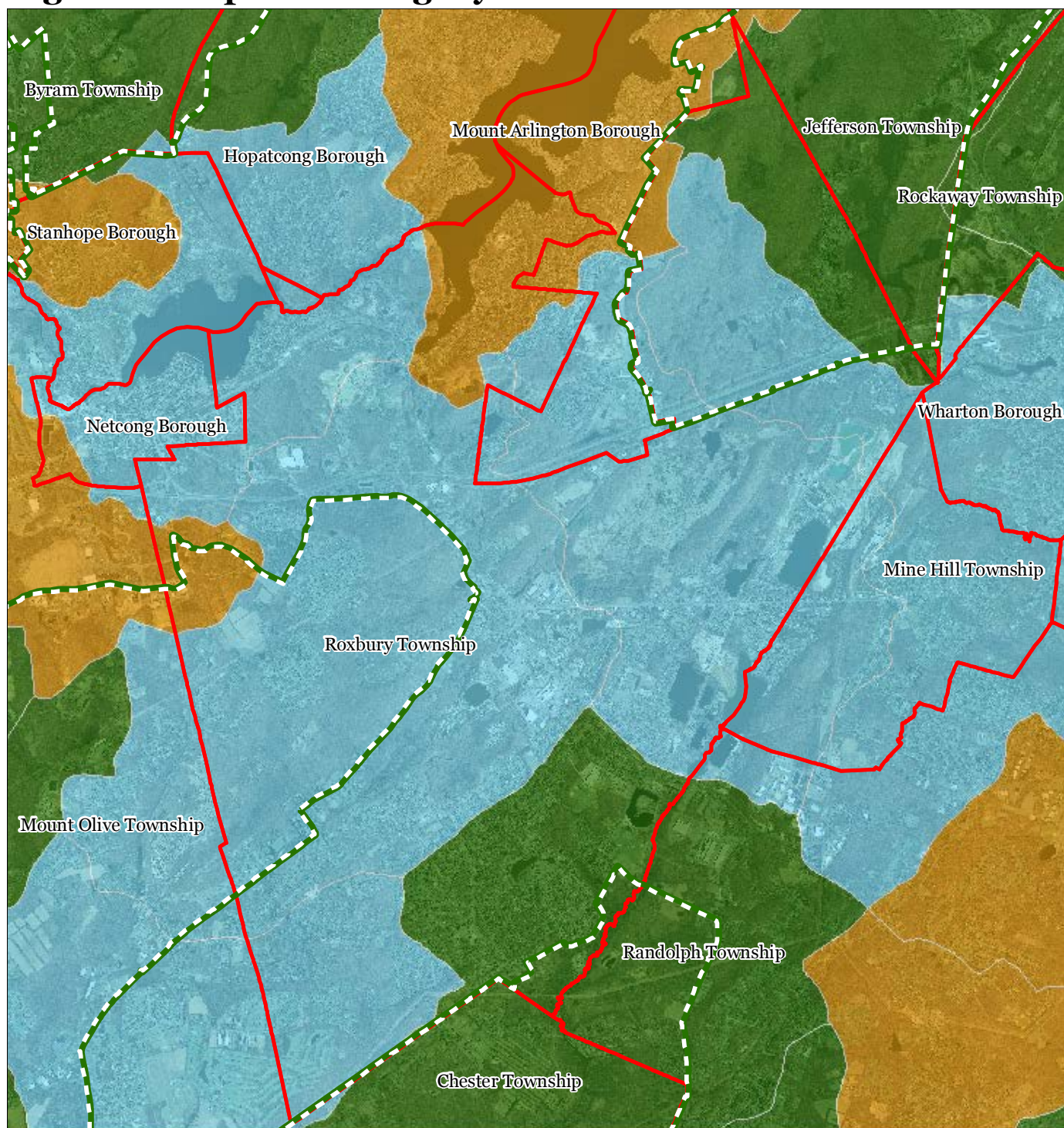
Roxbury Township



1 inch = 0.923 miles



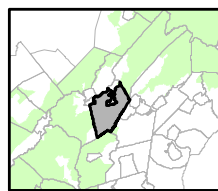
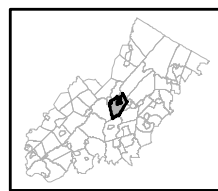
Figure 10: Riparian Integrity



Riparian Integrity by HUC14 Subwatershed

- Low
- Moderate
- High
- Preservation Area
- Municipal Boundaries

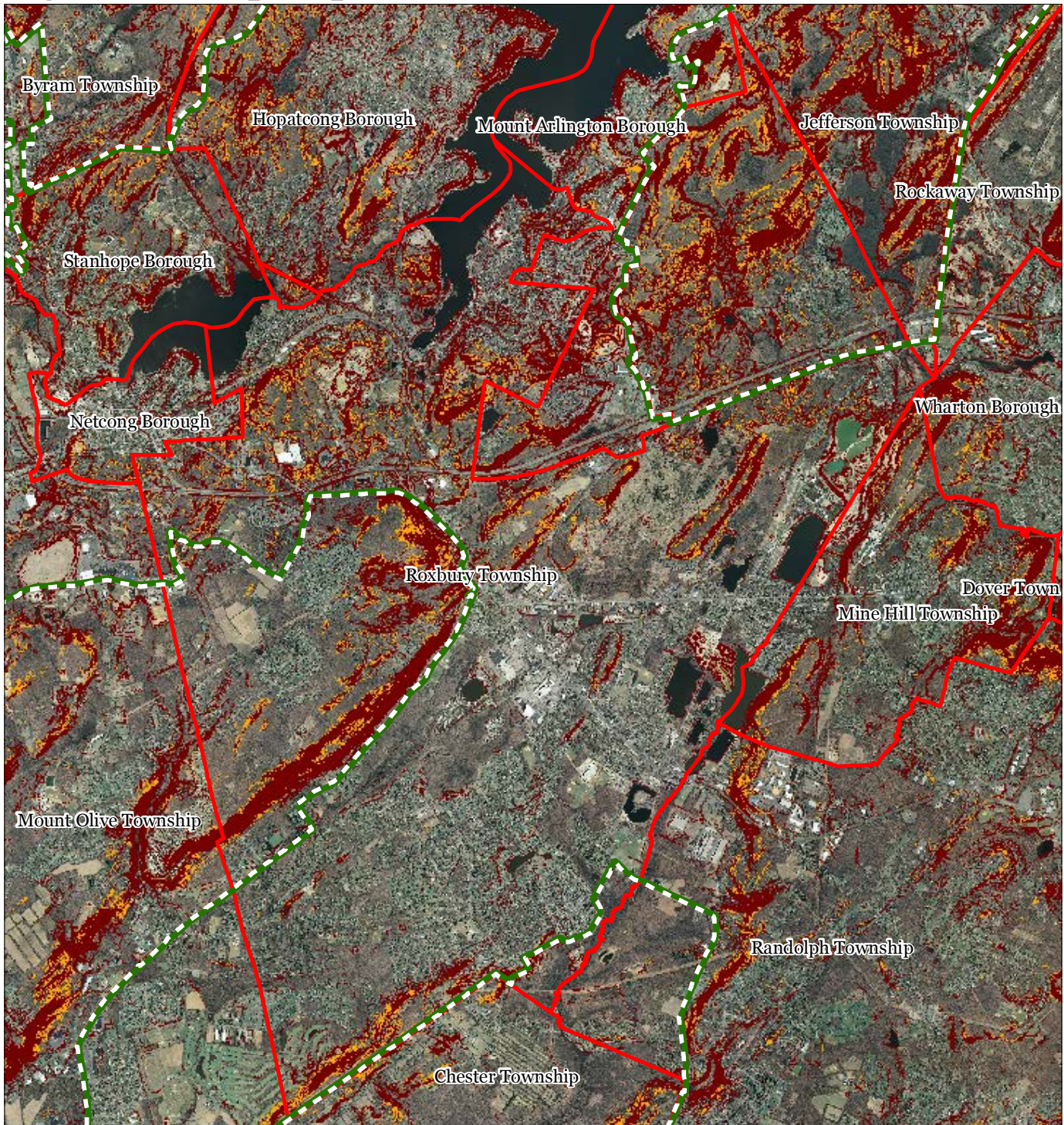
Roxbury Township







1 inch = 0.923 miles



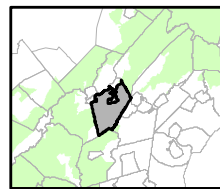
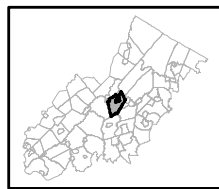
Figure 11: Steep Slope Protection Areas



Steep Slopes

-  Moderate
-  Severe
-  Preservation Area
-  Municipal Boundaries

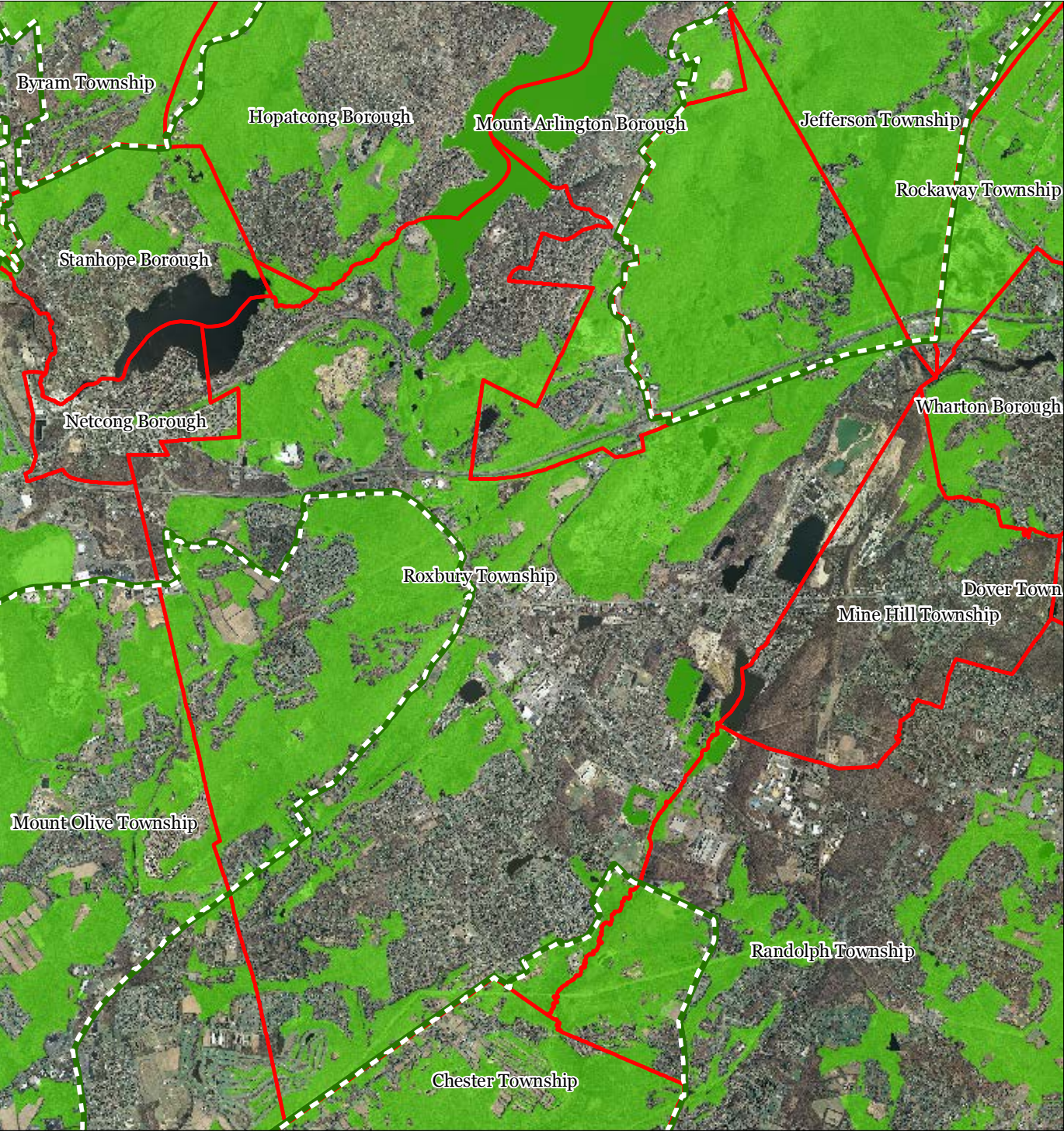
Roxbury Township






1 inch = 0.923 miles

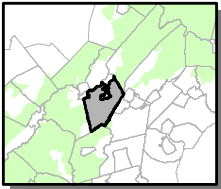
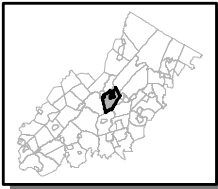


Figure 12: Critical Wildlife Habitat



-  Critical Wildlife Habitat
-  Preservation Area
-  Municipal Boundaries

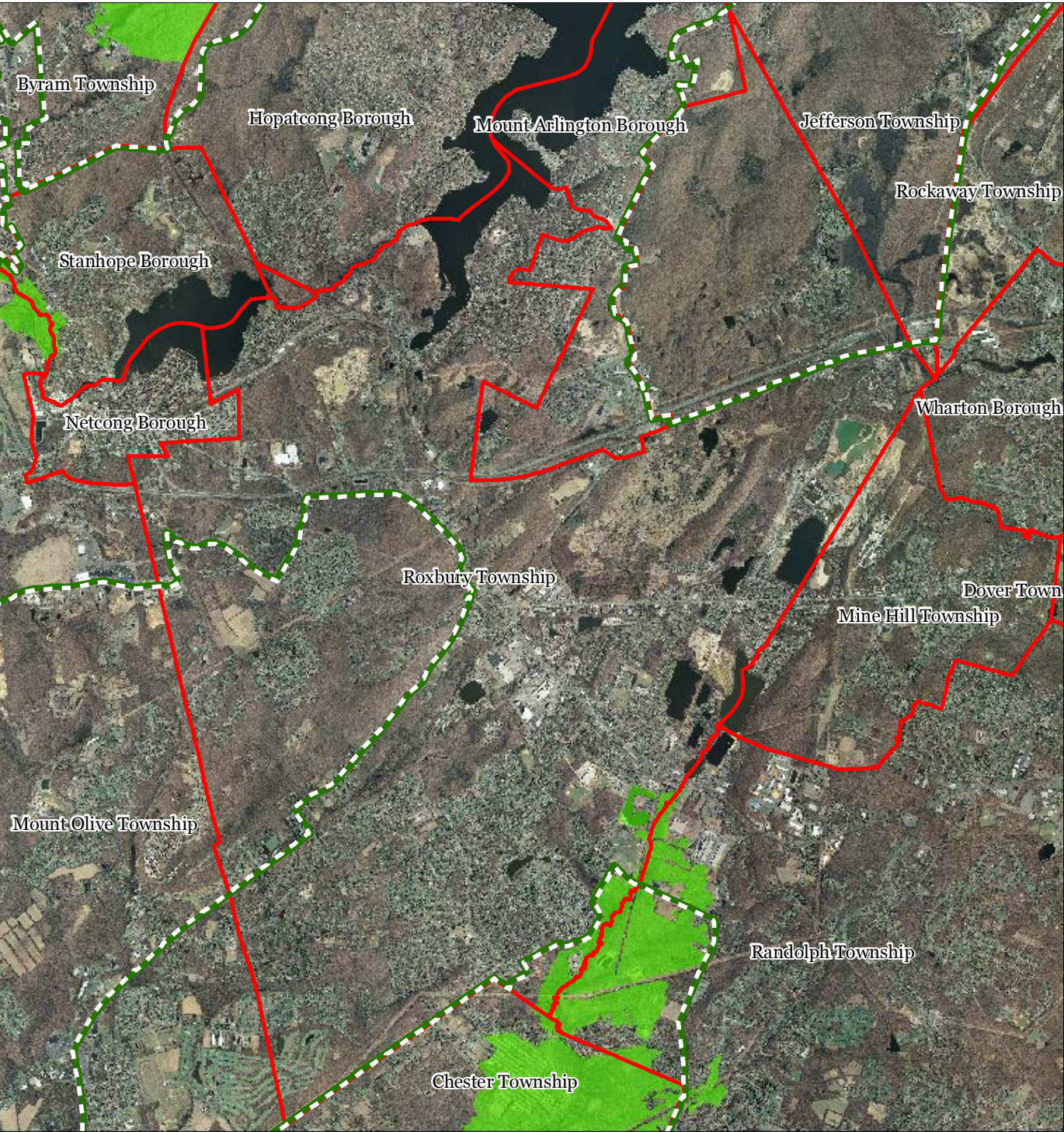
Roxbury Township






1 inch = 0.923 miles

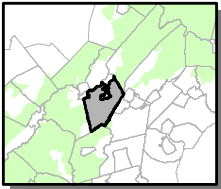
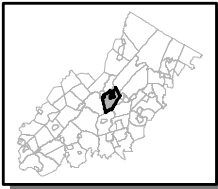


Figure 13: Significant Natural Areas



-  Significant Natural Areas
-  Preservation Area
-  Municipal Boundaries

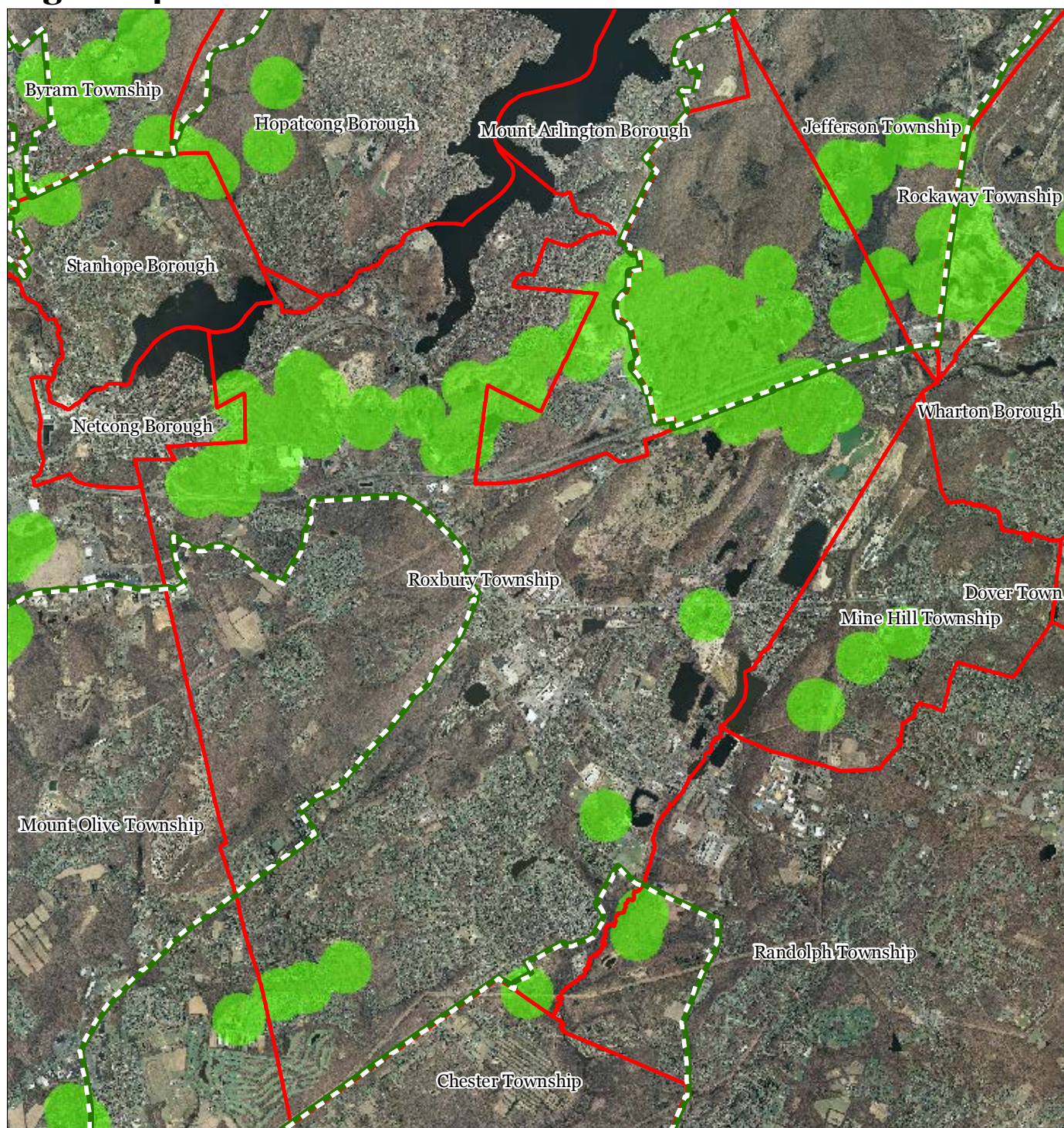
Roxbury Township






1 inch = 0.923 miles

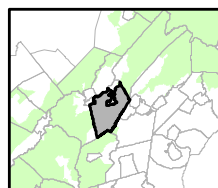
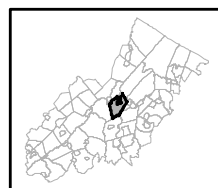


Figure 14: Vernal Pools



-  Vernal Pools + 1000ft Buffer
-  Preservation Area
-  Municipal Boundaries

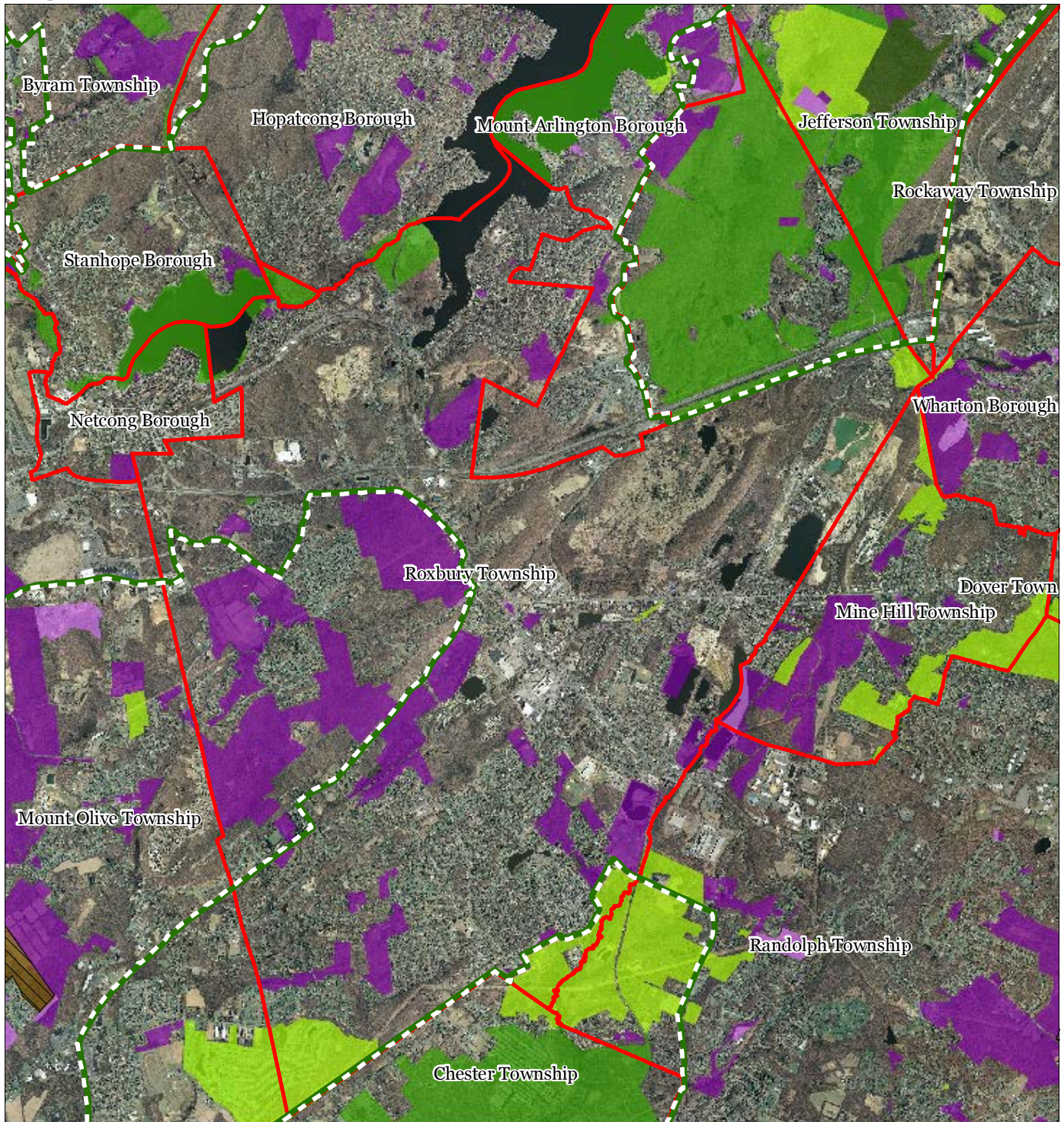
Roxbury Township



1 inch = 0.923 miles

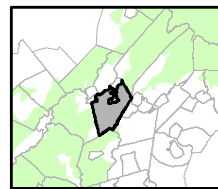
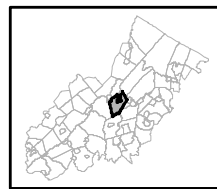


Figure 15: Preserved Lands



- | | |
|---|-------------------------------|
| Preserved Lands | Conservation Easements |
| Federal Open Space | Green Acres |
| State Open Space | SADC Easements |
| County Open Space | SADC Final |
| Municipal Open Space | SADC Preserved |
| Non-Profit/Private Open Space | Municipal Boundaries |
| Water Supply Watershed Lands | Preservation Area |
| Preserved Farmland | |
| Highlands Transfer of Development Lands | |

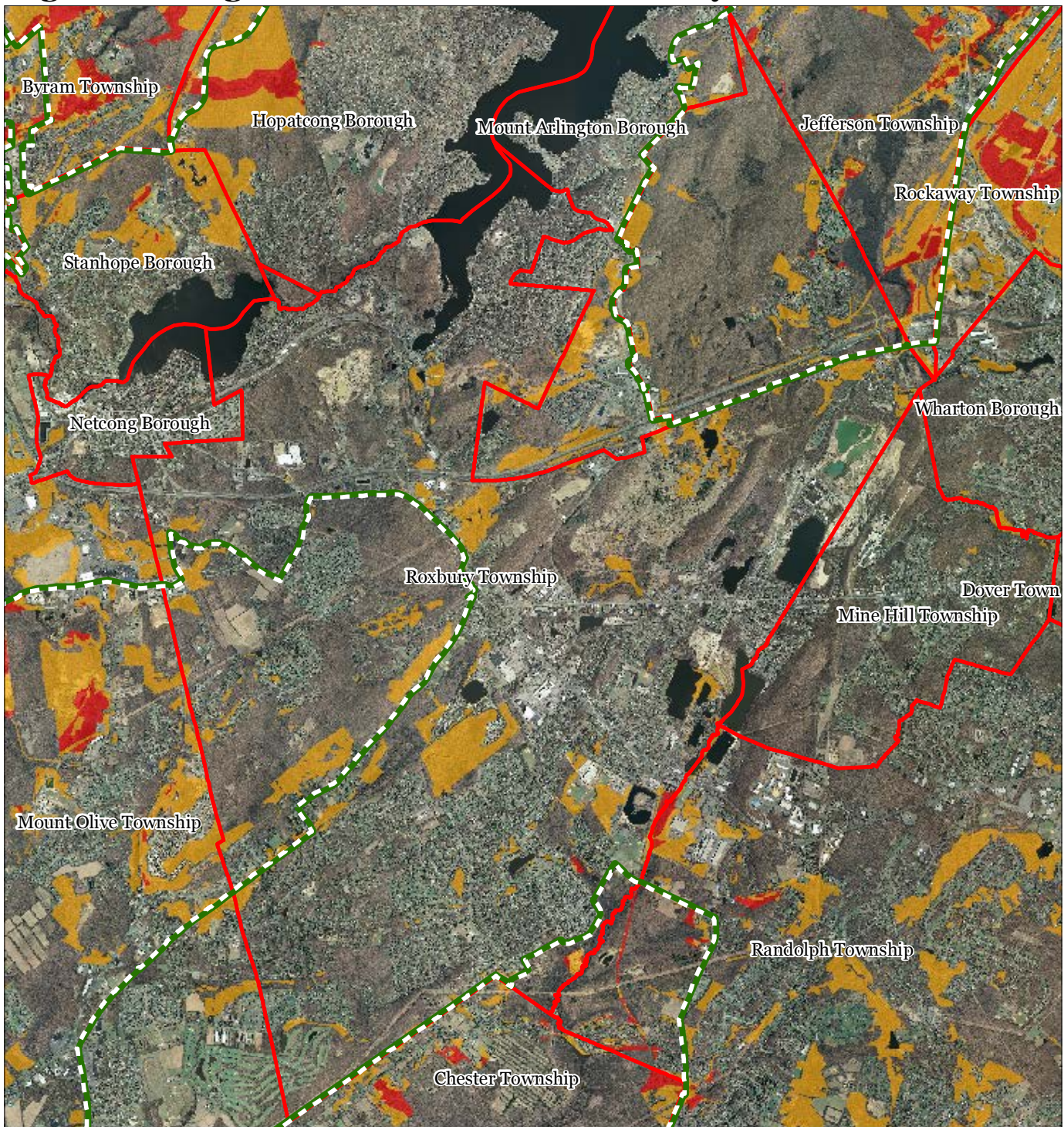
Roxbury Township



1 inch = 0.923 miles



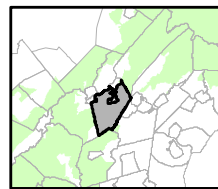
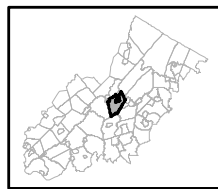
Figure 16: Highlands Conservation Priority Areas



Conservation Priority Area

- Moderate
- High
- Preservation Area
- Municipal Boundaries

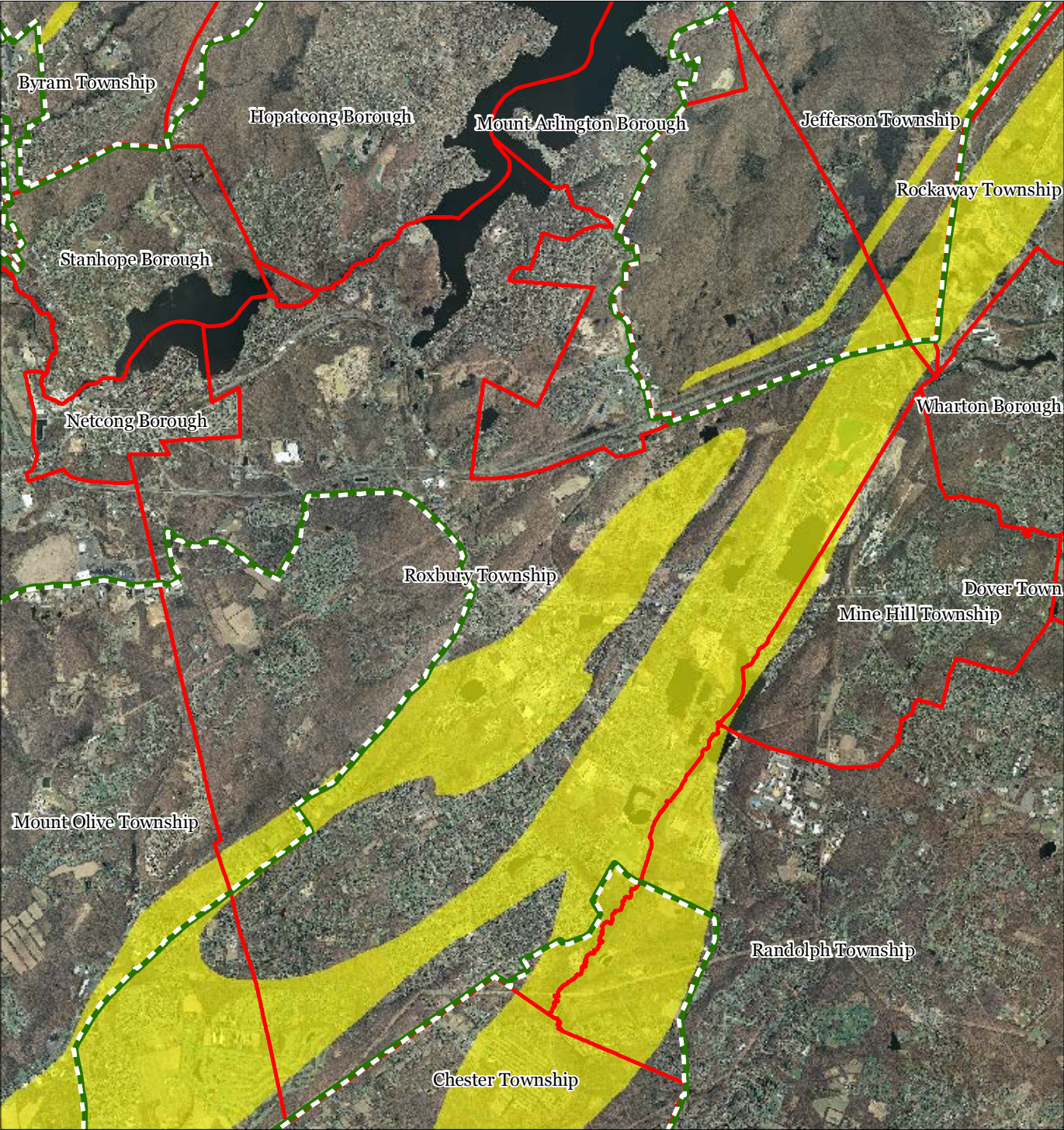
Roxbury Township






1 inch = 0.923 miles

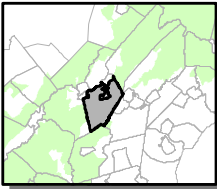
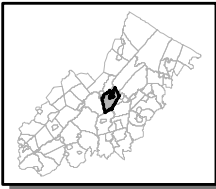


Figure 18: Carbonate Rock Area



-  Carbonate Rock Area
-  Preservation Area
-  Municipal Boundaries

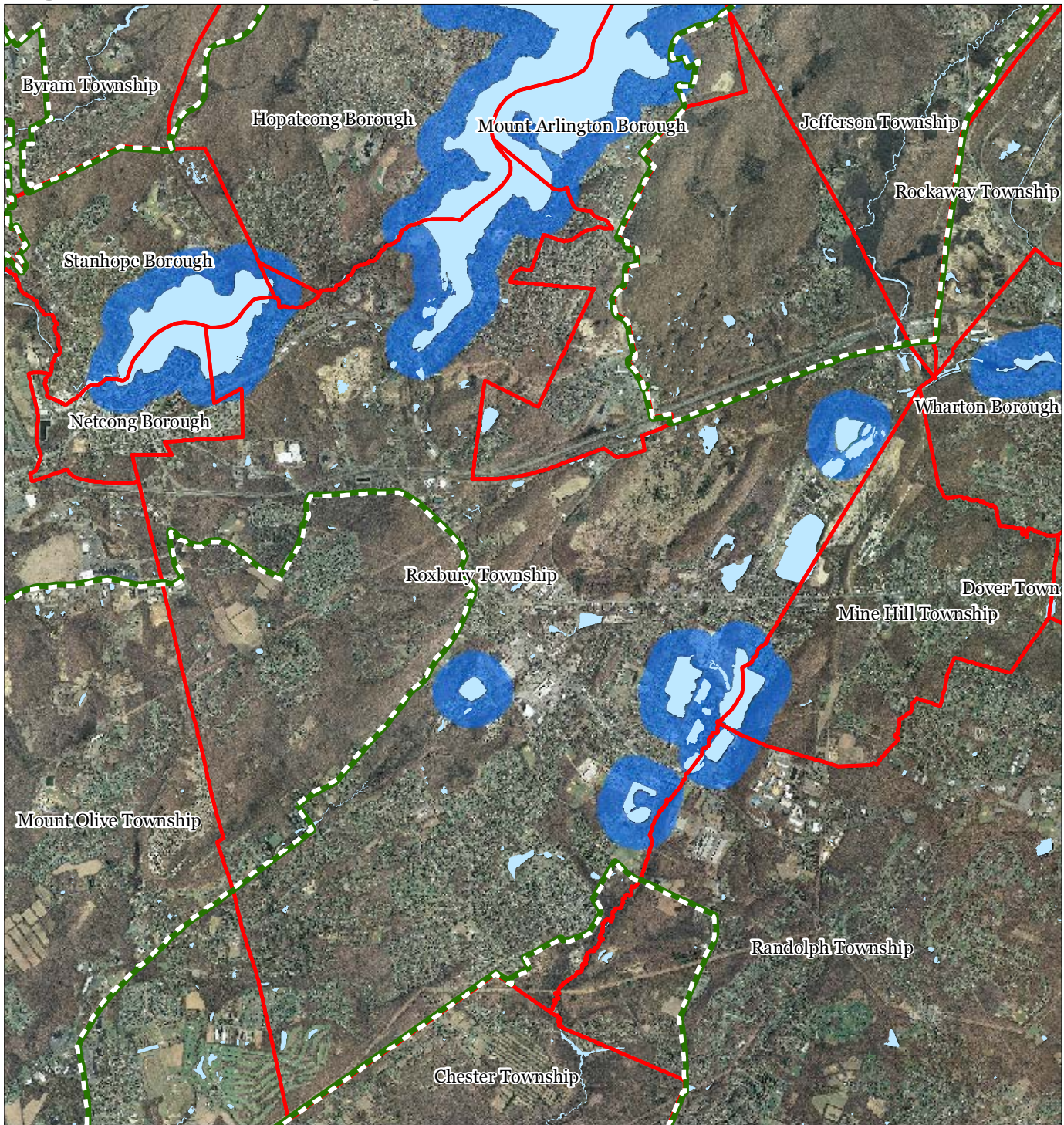
Roxbury Township



1 inch = 0.923 miles

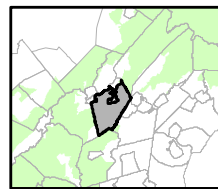
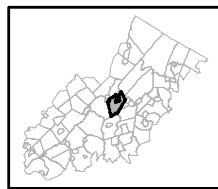


Figure 19: Lake Management Area



- Lakes & Ponds
- Lake Management Area
- Preservation Area
- Municipal Boundaries

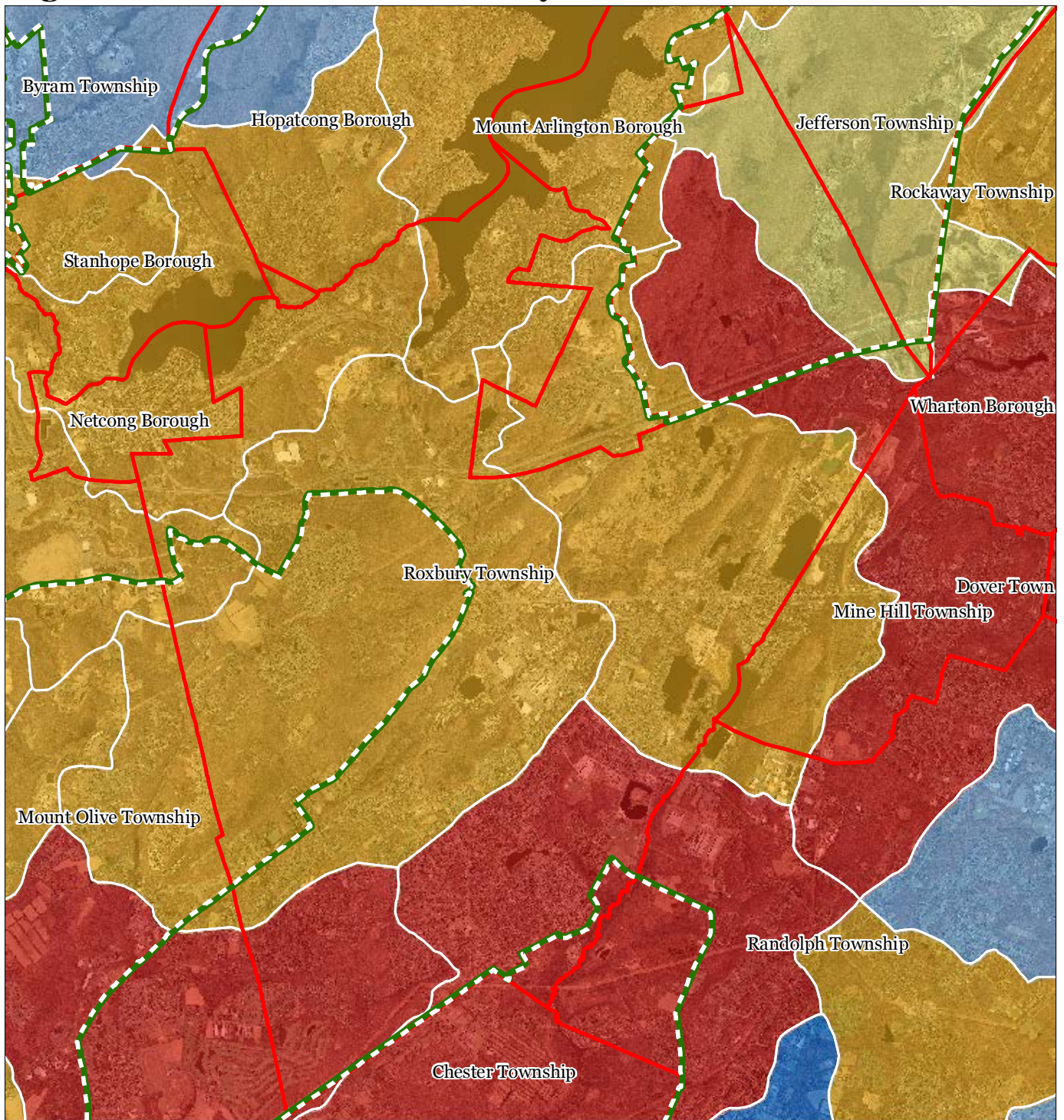
Roxbury Township



1 inch = 0.923 miles

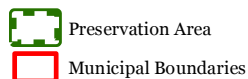
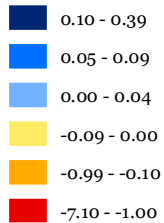


Figure 20: Net Water Availability

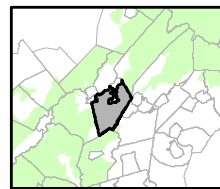
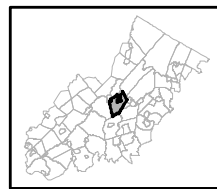


Net Water Availability By HUC14

Million Gallons Per Day (MGD)



Roxbury Township

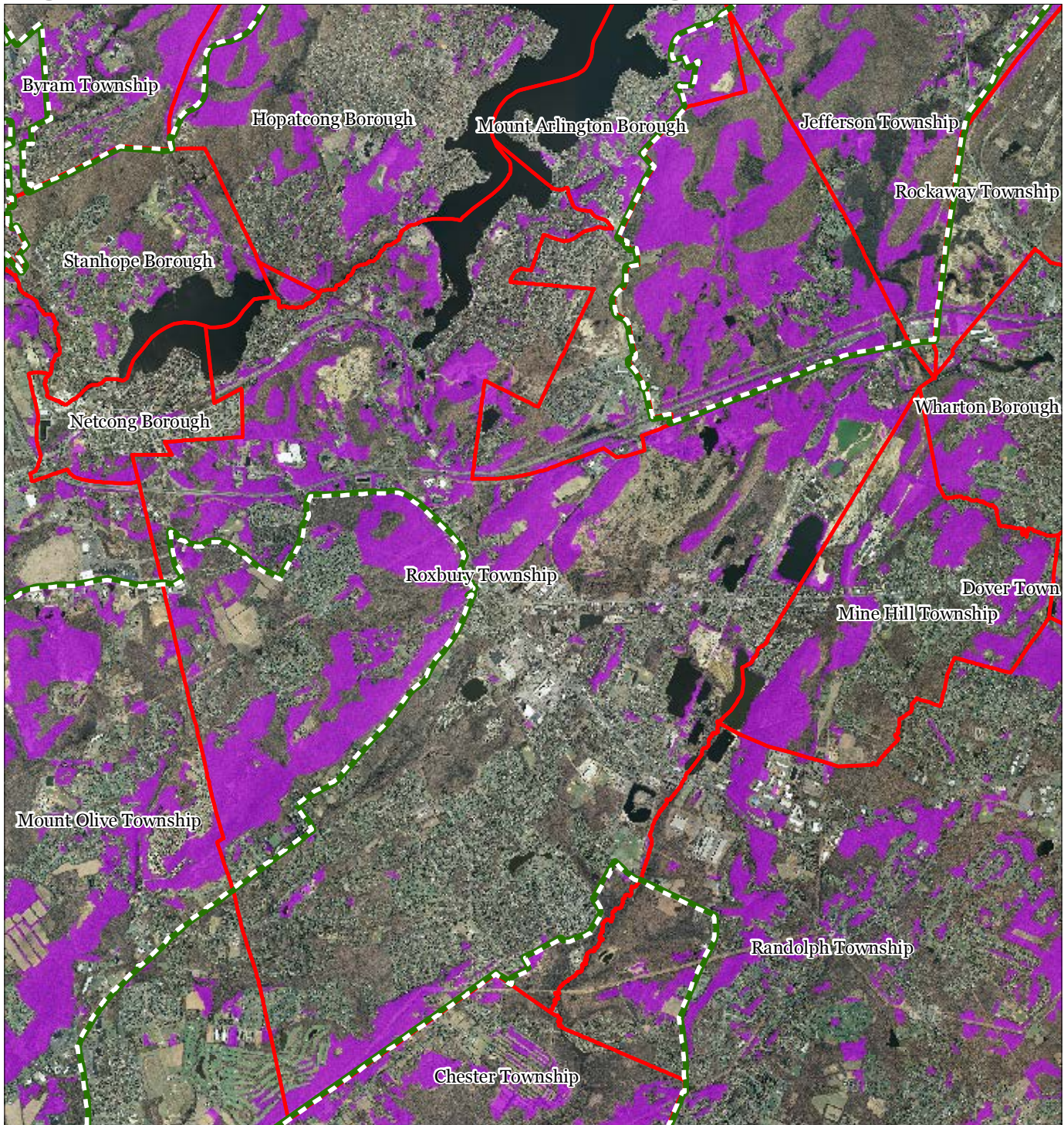





1 inch = 0.923 miles



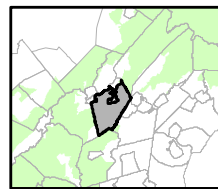
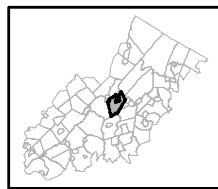
September 2013

Figure 21: Prime Ground Water Recharge Areas



-  Prime Ground Water Recharge Areas
-  Preservation Area
-  Municipal Boundaries

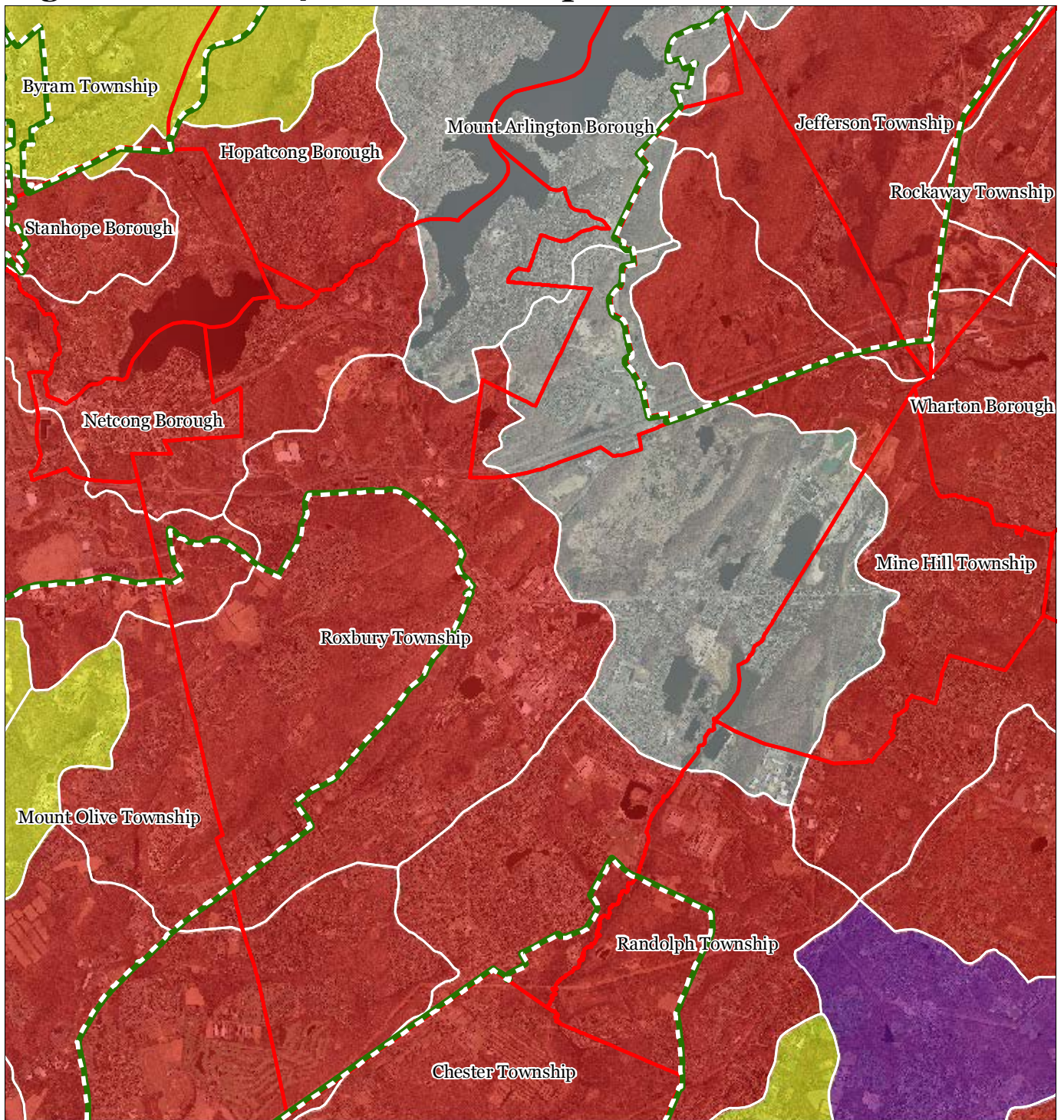
Roxbury Township



1 inch = 0.923 miles



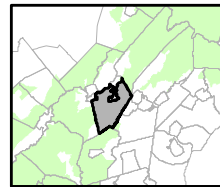
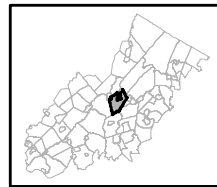
Figure 22: HUC 14s on NJDEP Impaired Waters List



Impaired Waters Overall Assessment by HUC14 Subwatershed

- Non Impacted
- Insufficient Data Available
- Moderate
- Water Quality Impaired
- Preservation Area
- Municipal Boundaries

Roxbury Township

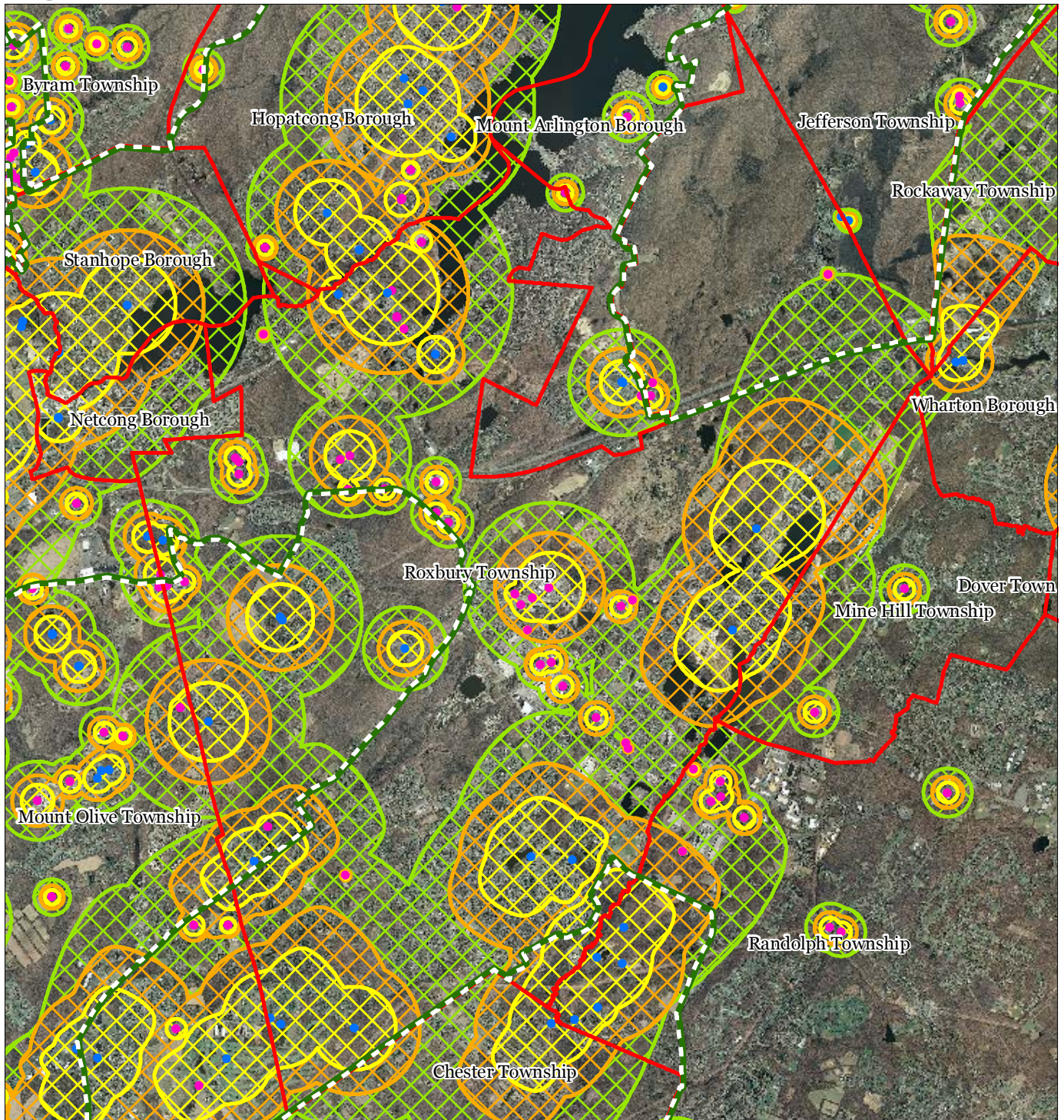


1 inch = 0.923 miles



September 2013

Figure 23: Wellhead Protection Areas



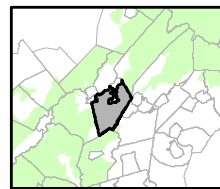
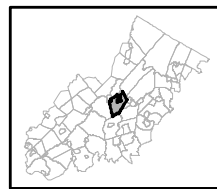
- Public Community Wells
- Public Non-Community Wells

Wellhead Protection Areas

- 2-Year Tier
- 5-Year Tier
- 12-Year Tier

- Preservation Area
- Municipal Boundaries

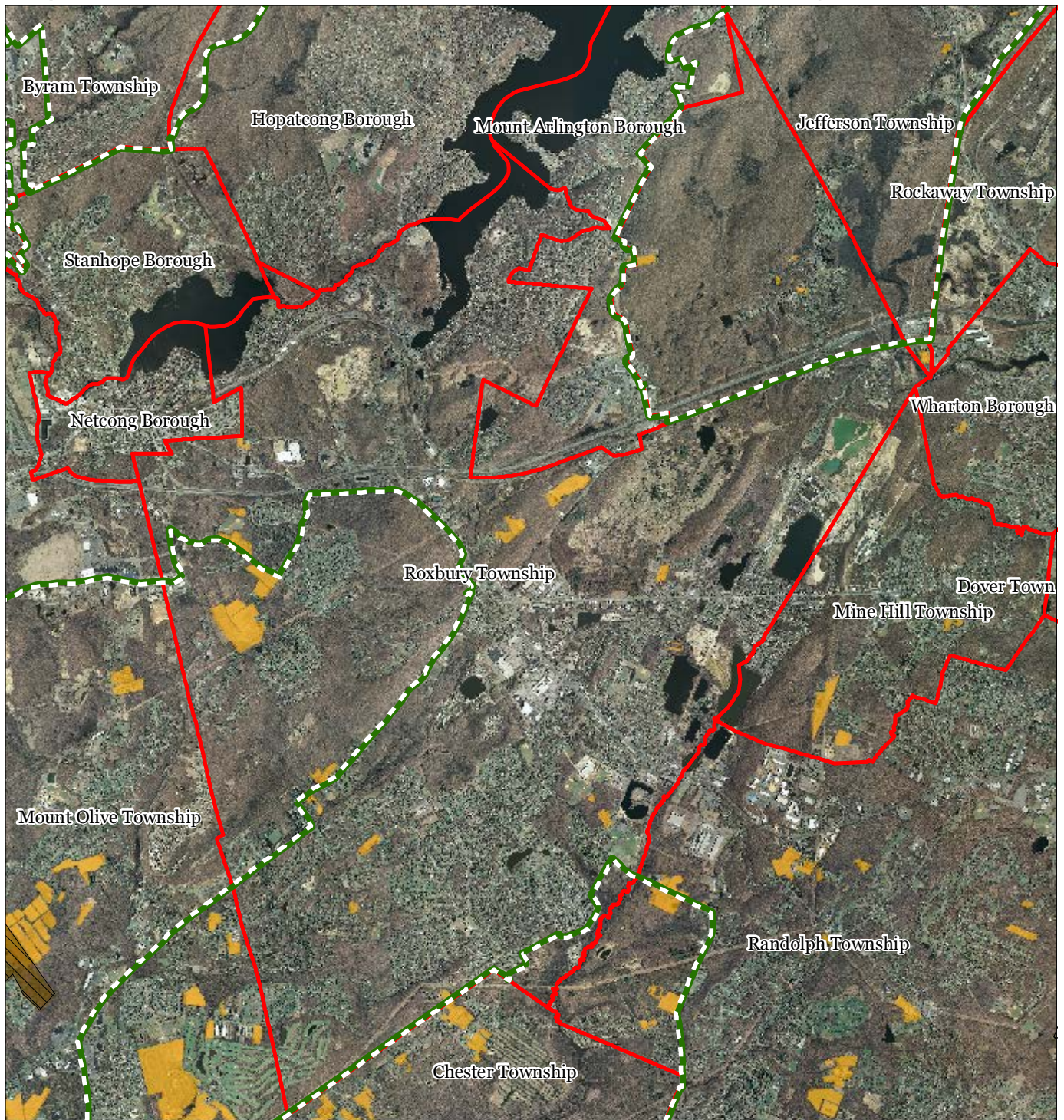
Roxbury Township



1 inch = 0.923 miles



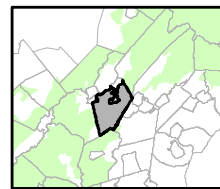
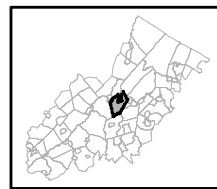
Figure 26: Preserved Farms, SADC Easements, All Agricultural Uses



SADC Easements

-  *SADC Final*
-  *SADC Preserved*
-  Preserved Farmland
-  Agriculture Uses
-  Preservation Area
-  Municipal Boundaries

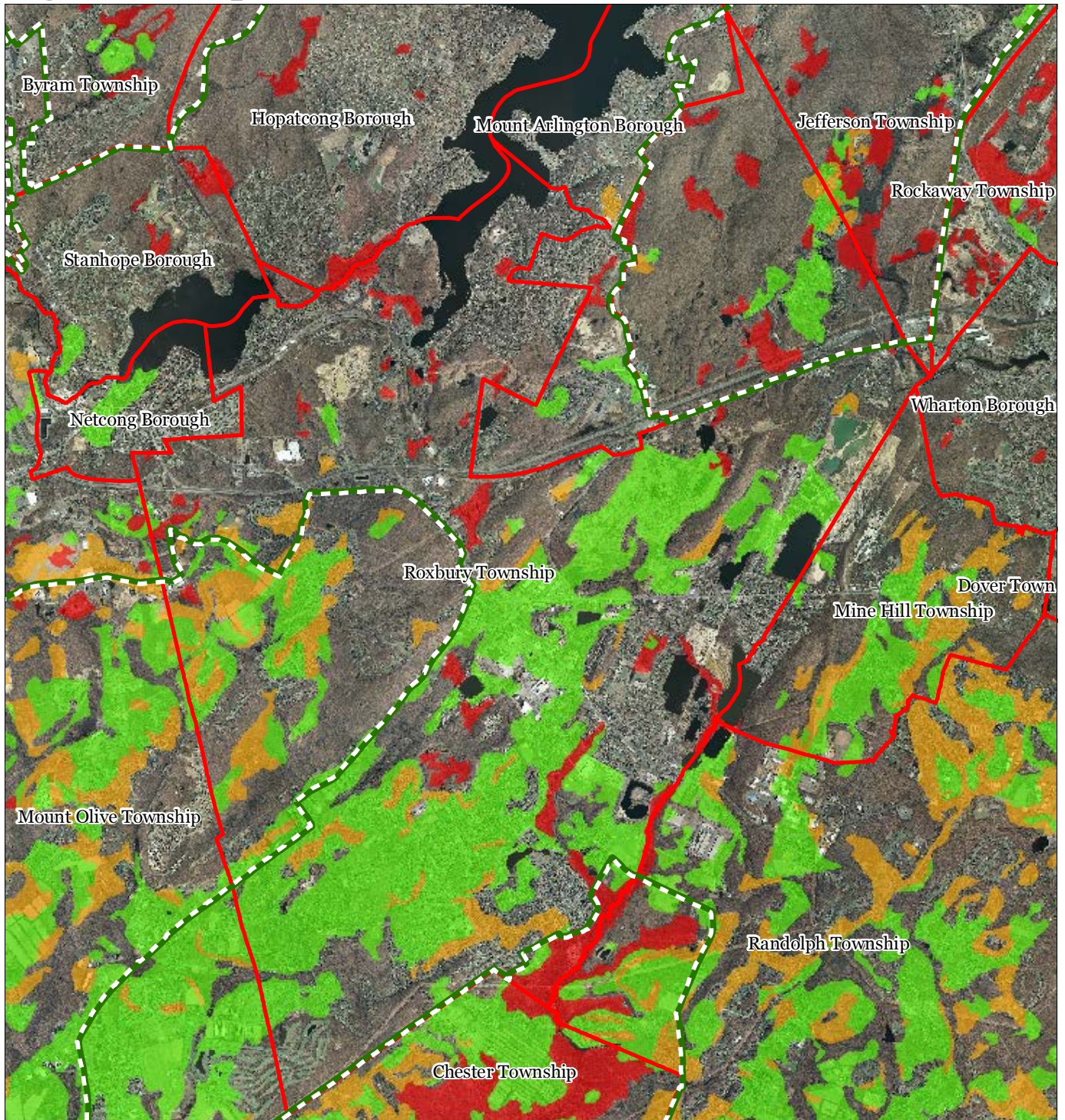
Roxbury Township



1 inch = 0.923 miles



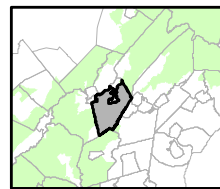
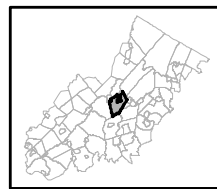
Figure 27: Important Farmland Soils



Important Farmland Soils

- Prime Farmland
- Farmland of Local Importance
- Farmland of Statewide Importance
- Farmland of Unique Importance
- Preservation Area
- Municipal Boundaries

Roxbury Township



1 inch = 0.923 miles



Figure 28: Historic, Cultural, and Archaeological Resources Inventory

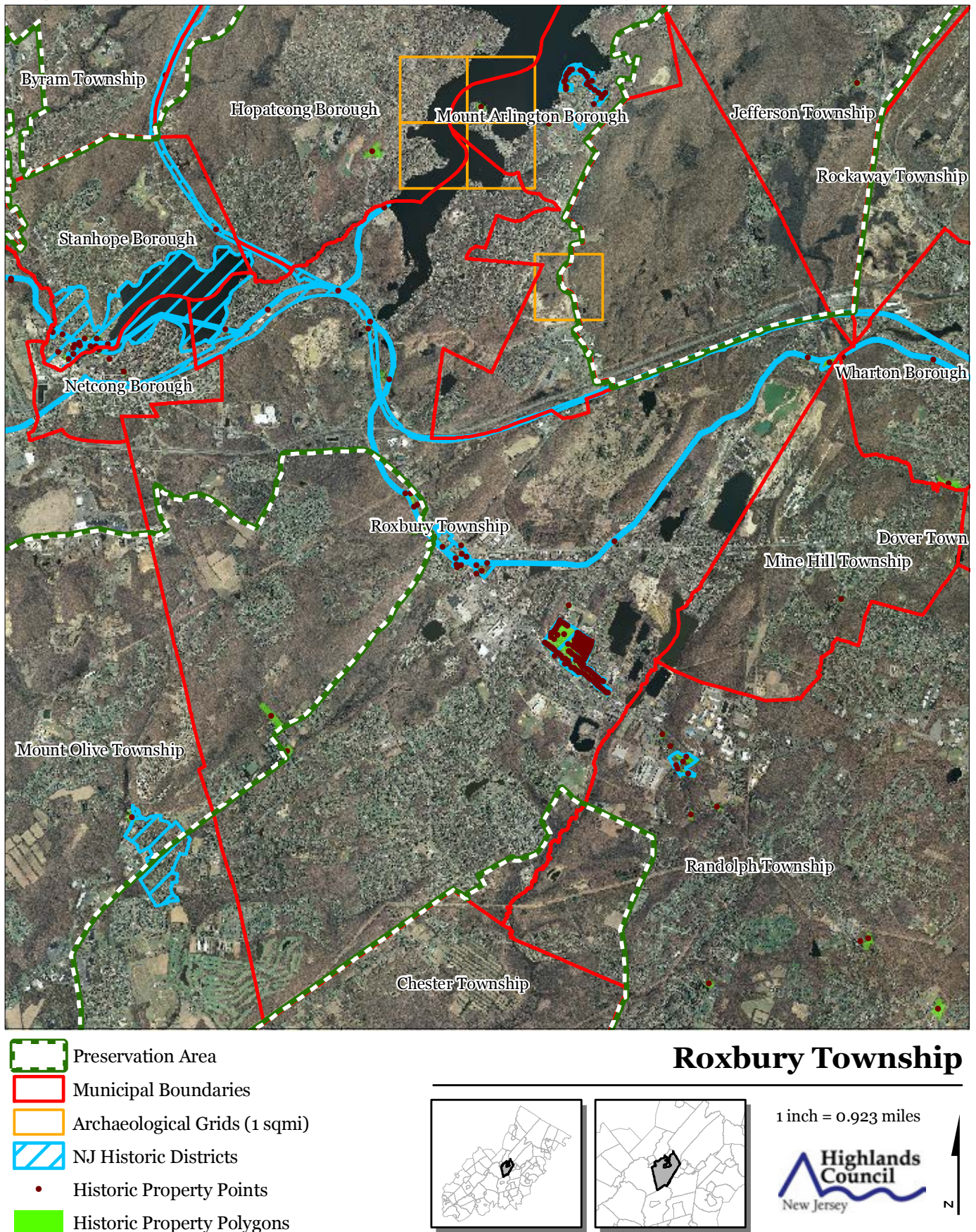
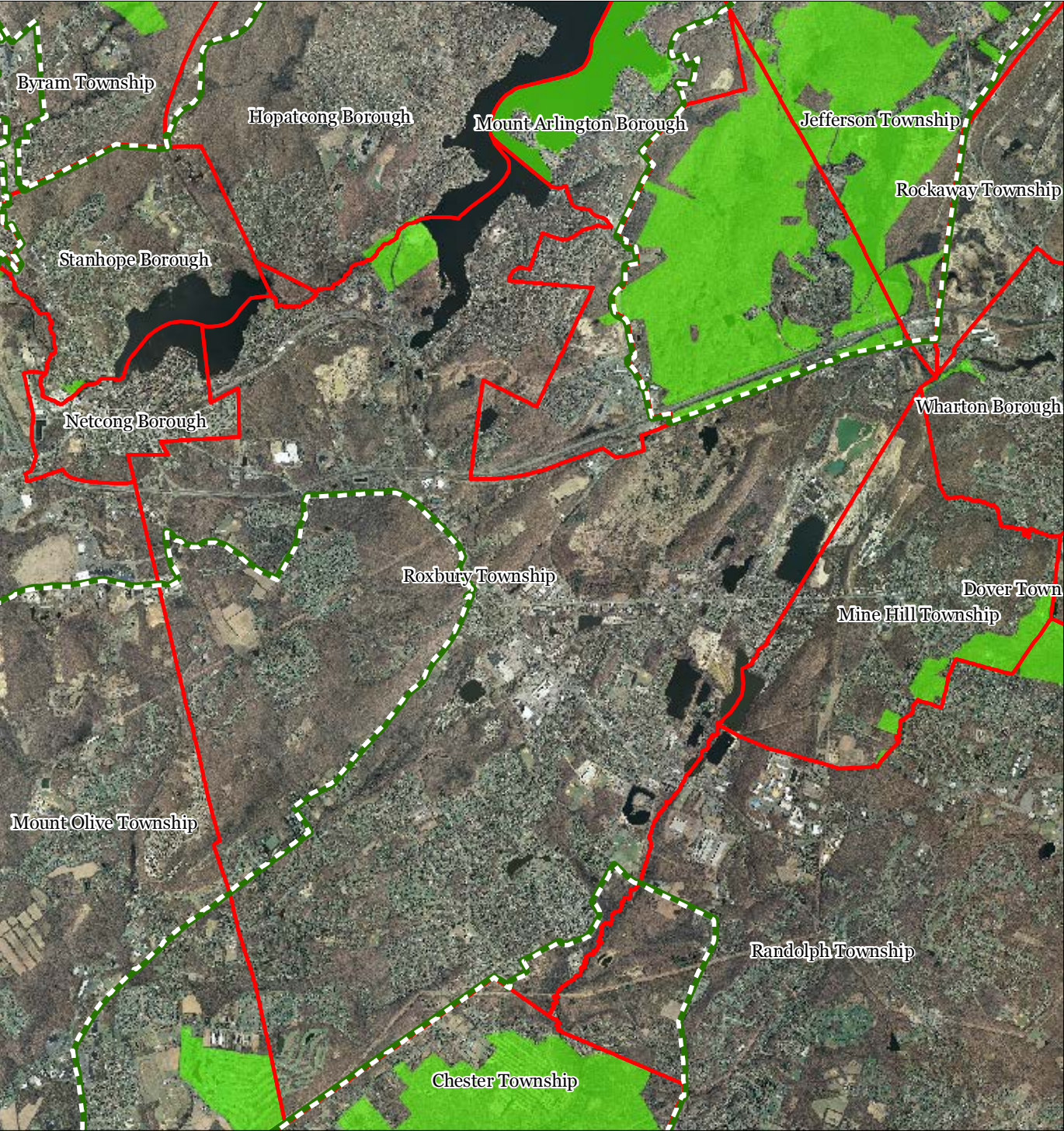



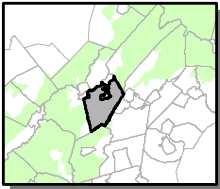
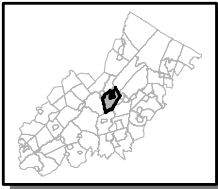


Figure 29: Baseline Scenic Resources Inventory



-  Scenic Resources
-  Municipal Boundaries
-  Preservation Area

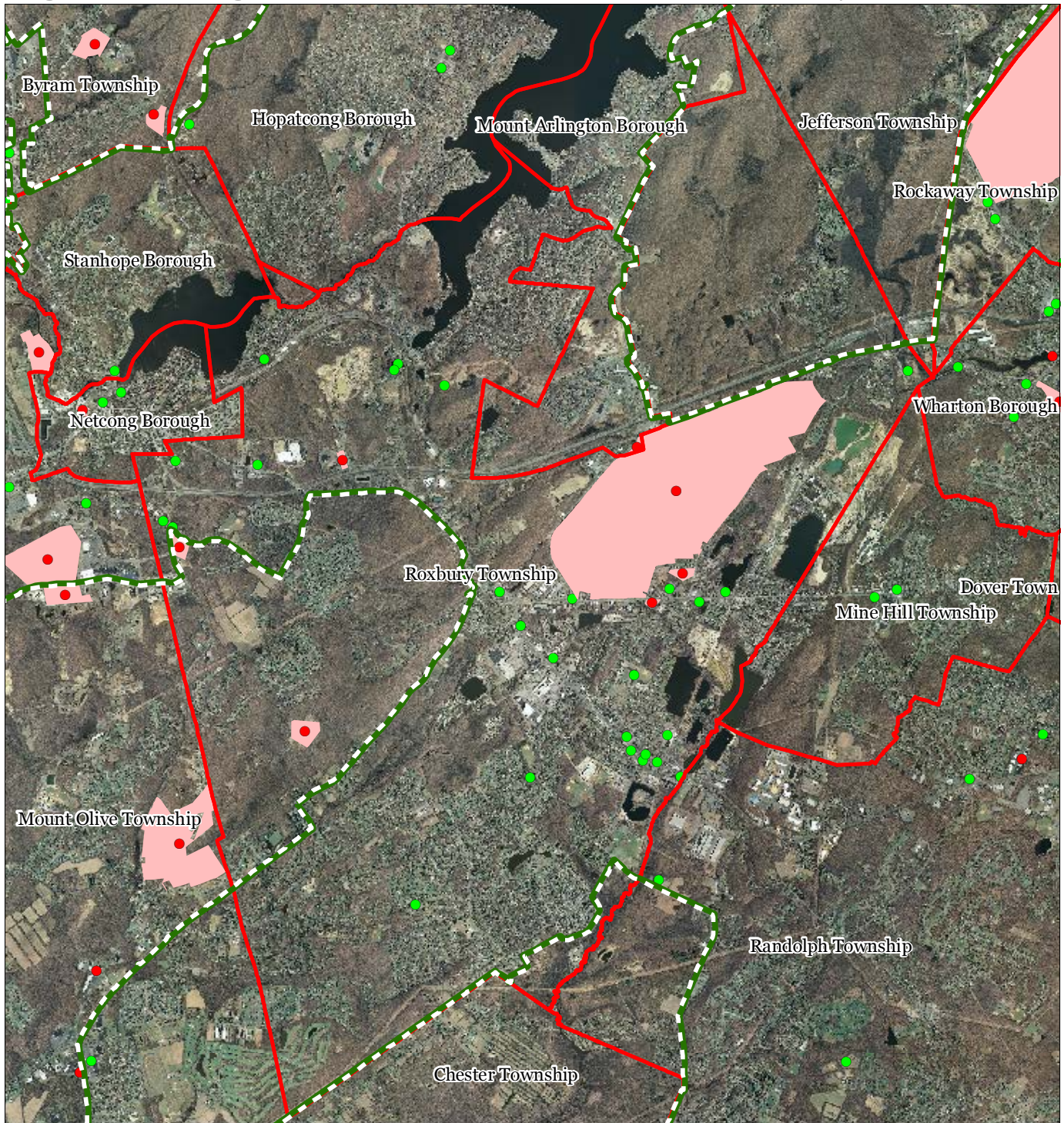
Roxbury Township



1 inch = 0.923 miles



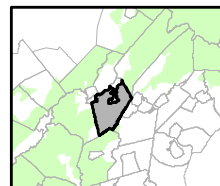
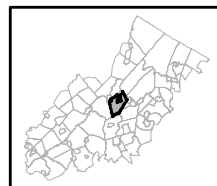
Figure 30: Highlands Contaminated Site Inventory



Highlands Contaminated Site Inventory

Roxbury Township

- Tier 1 Sites
- Tier 1 Sites (Polygons)
- Tier 2 Sites
- Preservation Area
- Municipal Boundaries

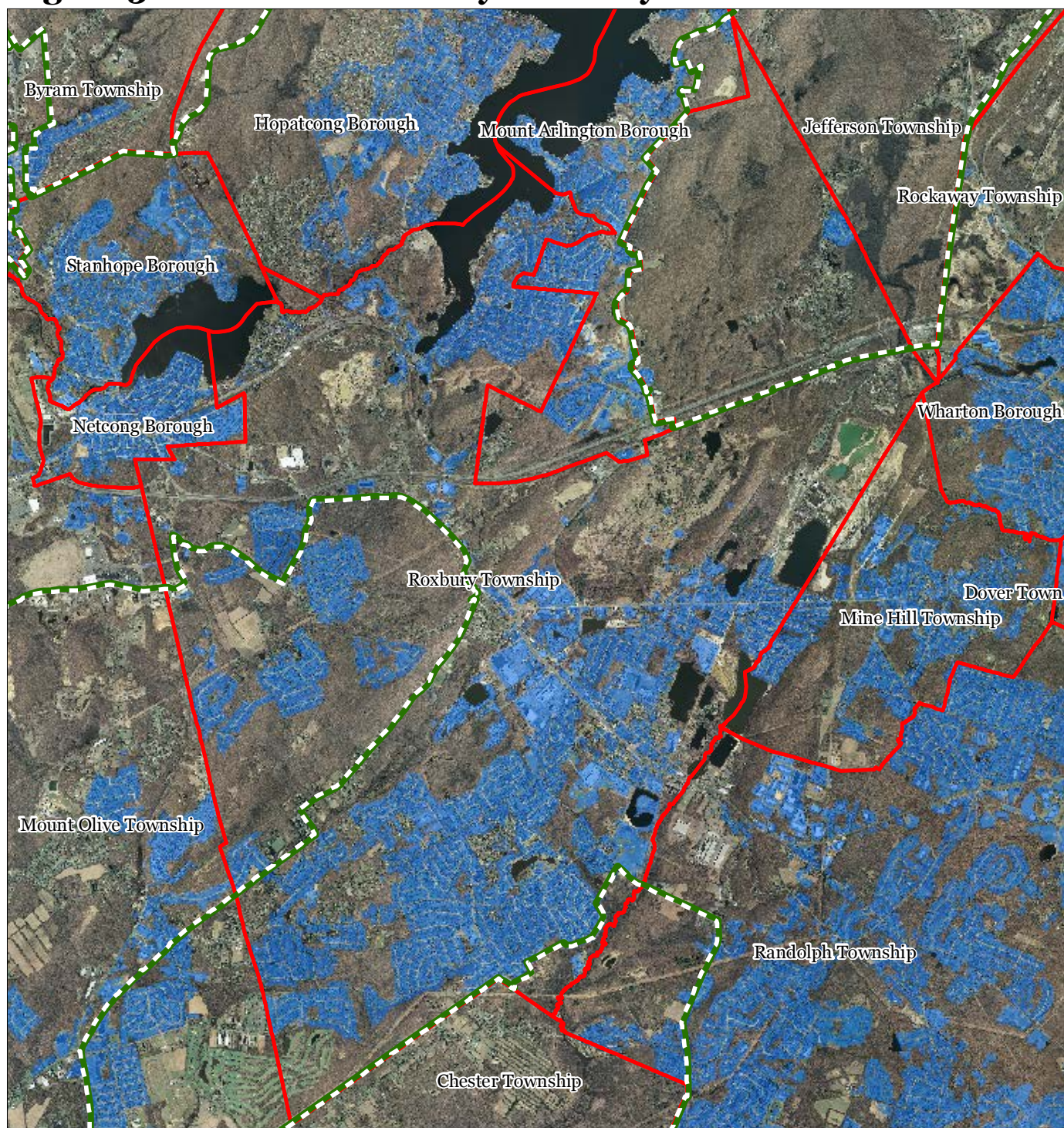





1 inch = 0.923 miles



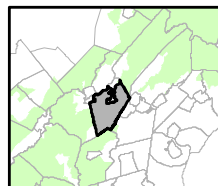
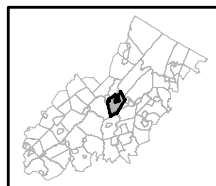
September 2013

Figure 31: Public Community Water Systems



-  Public Community Water Systems
-  Preservation Area
-  Municipal Boundaries

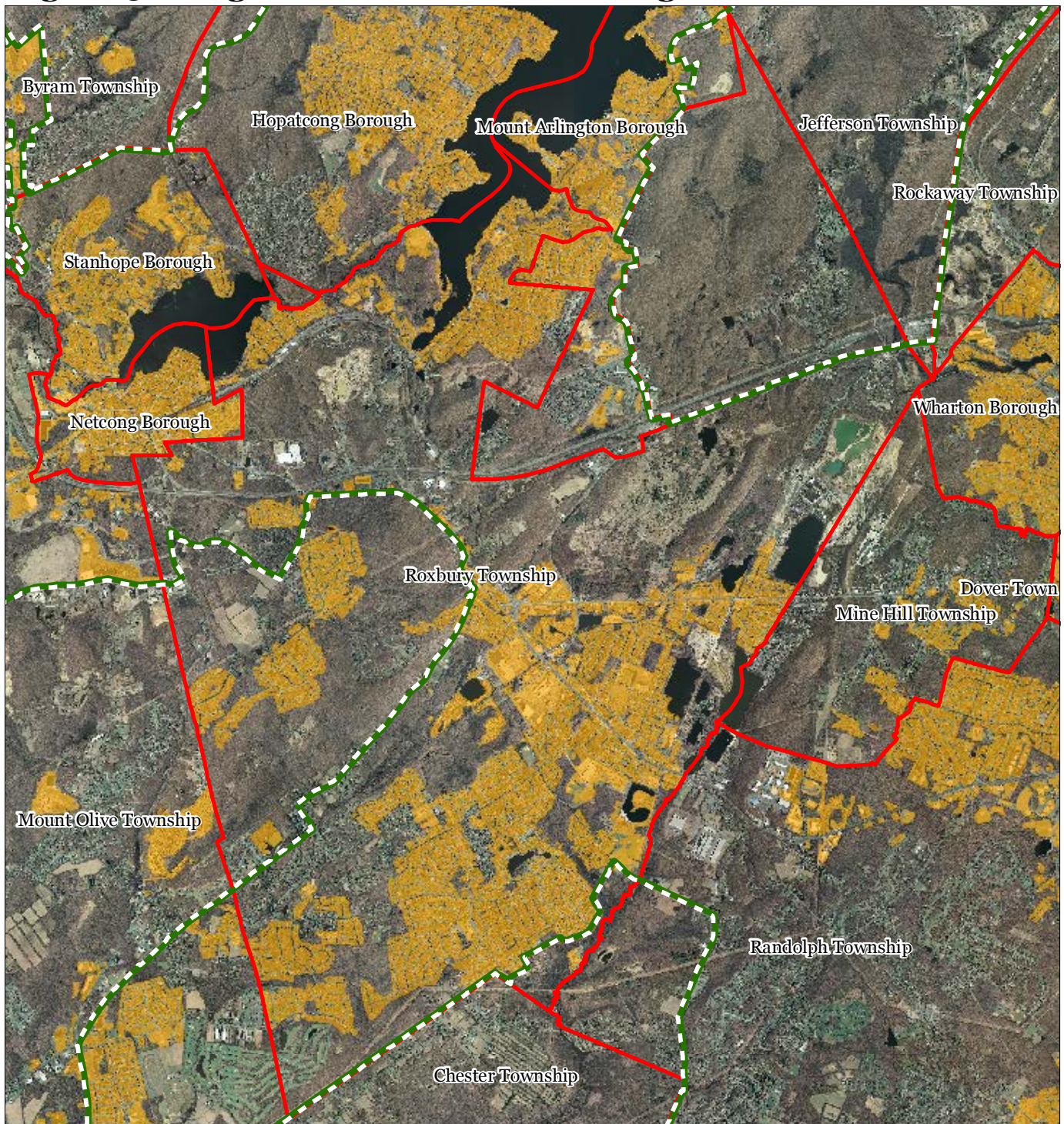
Roxbury Township






1 inch = 0.923 miles



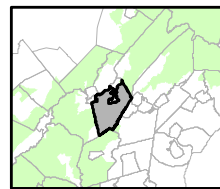
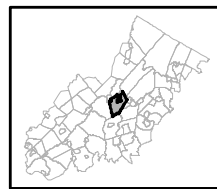
Figure 32: Highlands Domestic Sewerage Facilities



Highlands Domestic Sewerage Facilities

-  Existing Area Served
-  Preservation Area
-  Municipal Boundaries

Roxbury Township

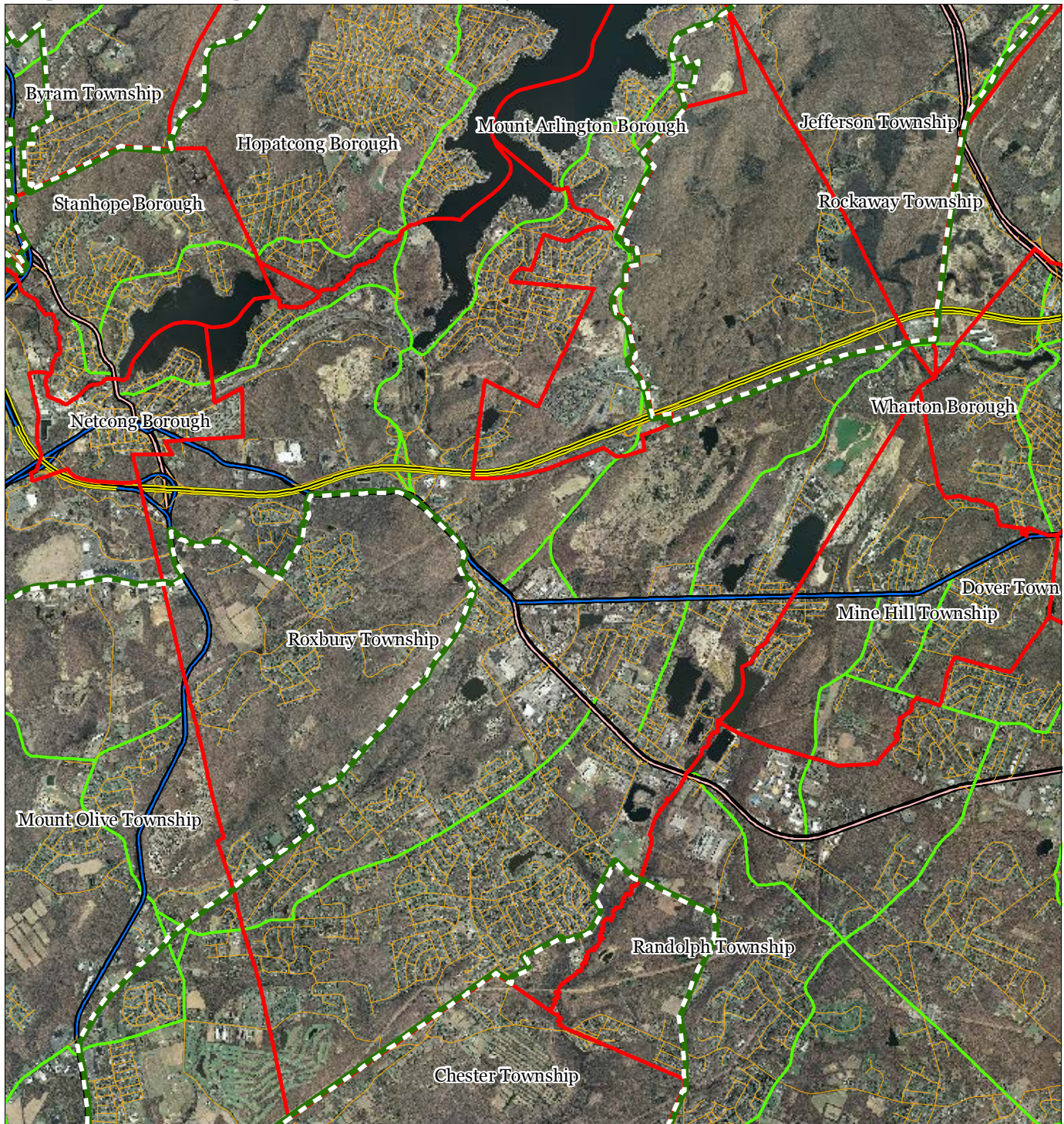


1 inch = 0.923 miles



September 2013

Figure 33: Highlands Roadway Network



Roadway Network

Interstate Highways

U.S. Routes

State Routes

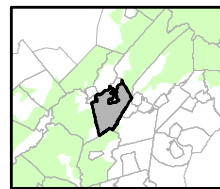
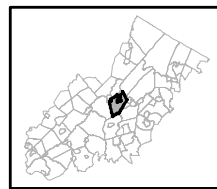
County Routes

Local Routes

Preservation Area

Municipal Boundaries

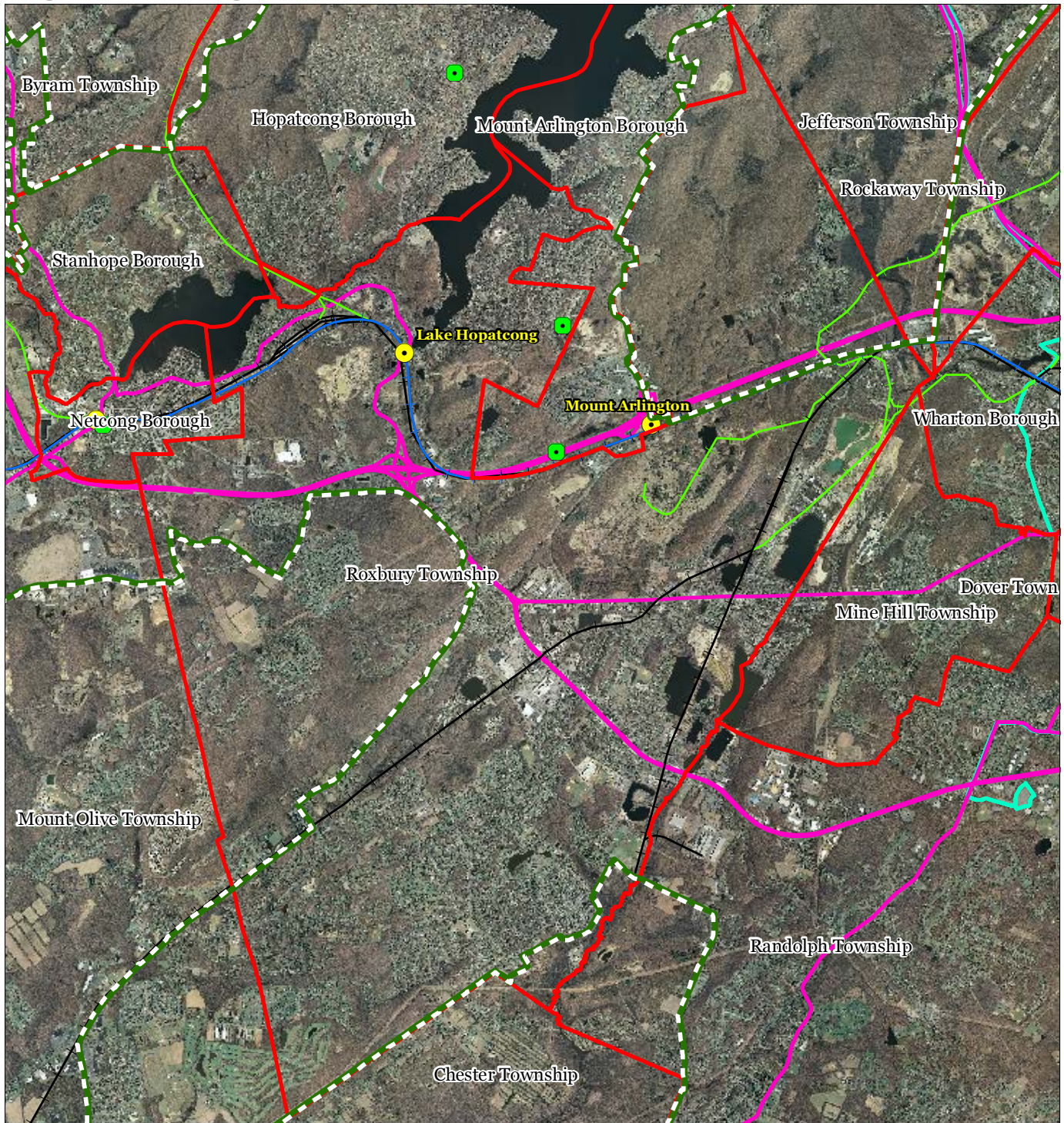
Roxbury Township



1 inch = 0.923 miles

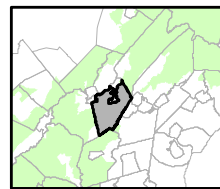
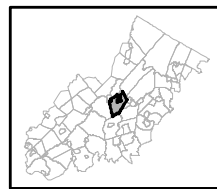


Figure 34: Highlands Transit Network



- Rail Network**
- Boonton Line
 - Main Line & Bergen County Line
 - Morris and Essex Line
 - Raritan Valley Line
 - Freight Rail Lines**
 - Freight Rail Lines
 - Abandoned Freight Rail
- Rail Stations
 - Park and Ride Sites
 - Private Bus Lines
 - NJ Transit Bus Lines
 - ✈ Airports

Roxbury Township



1 inch = 0.923 miles

