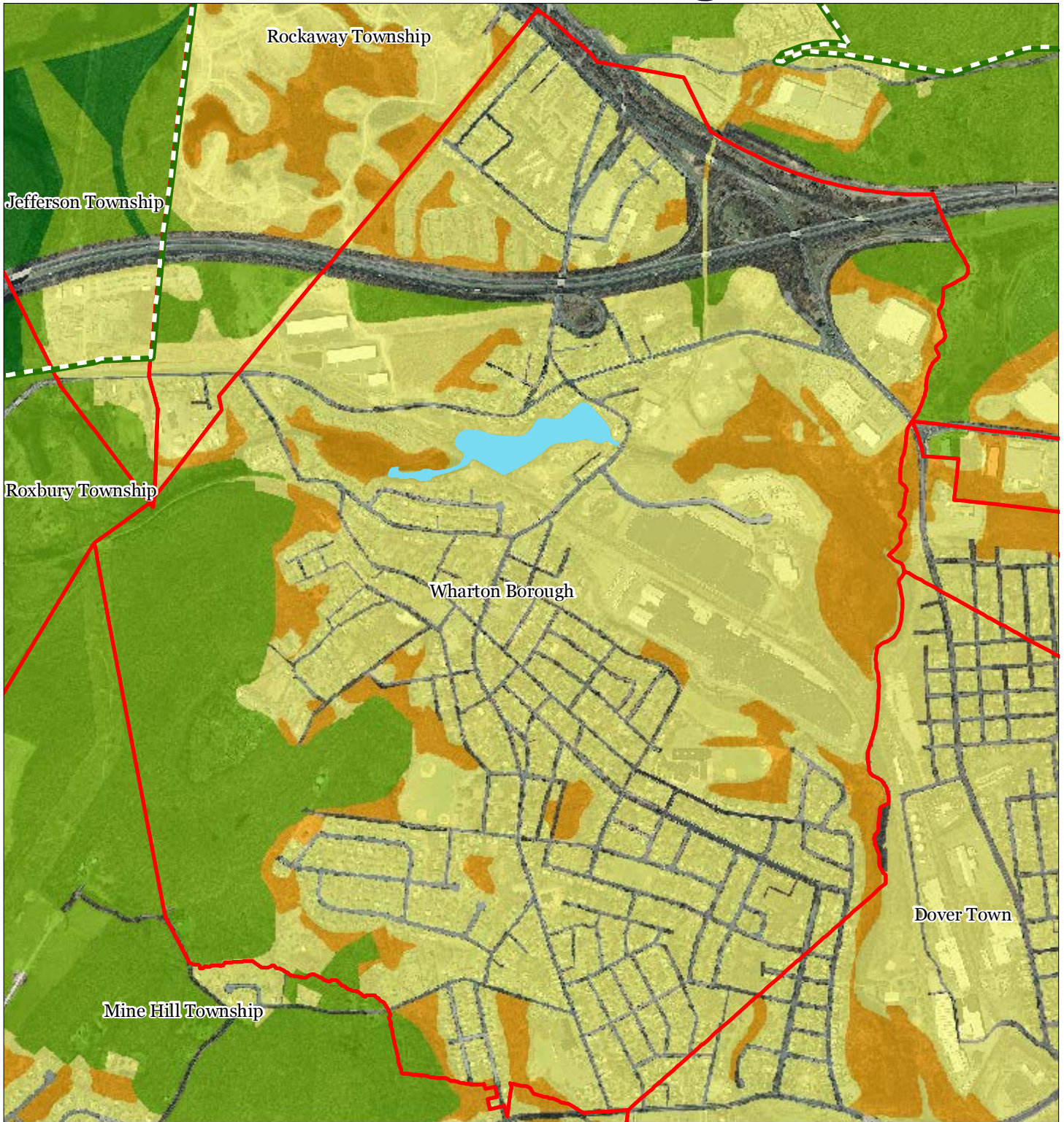


Exhibit A: Regional Master Plan Overlay Zone Designation



Regional Master Plan Overlay Zone Designation

- | | |
|--|-----------------------------|
| Zone | Lakes Greater Than 10 acres |
| Protection | Preservation Area |
| Conservation | Municipal Boundaries |
| Existing Community | |
| Sub-Zone | |
| Existing Community Environmentally Constrained | |
| Conservation Environmentally Constrained | |
| Lake Community | |
| Wildlife Management | |

Wharton Borough



1 inch = 0.239 miles



September 2011

EXHIBIT B: Borough of Wharton Land Use Inventory

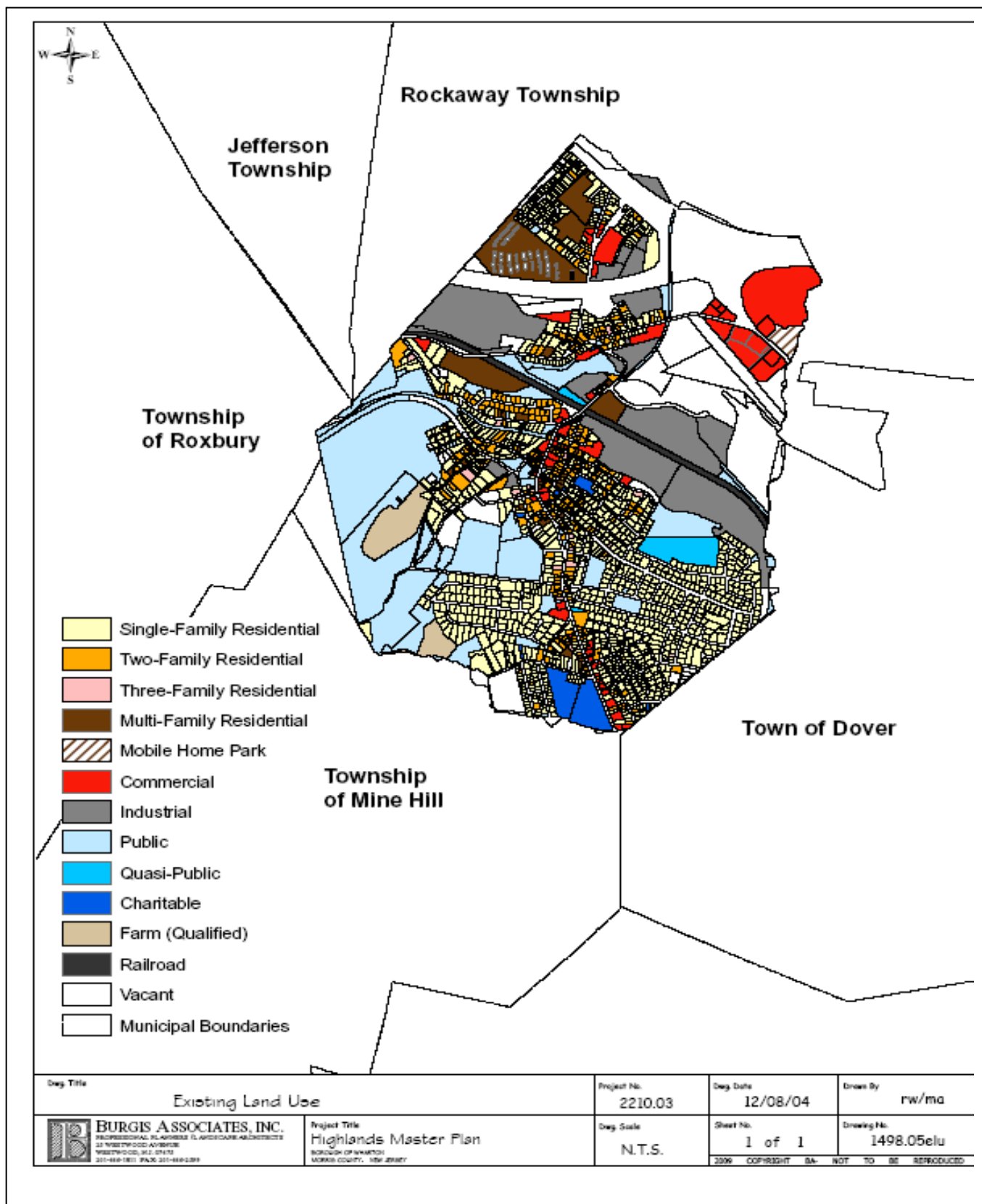


Exhibit C: Highlands Contaminated Site Inventory



Highlands Contaminated Site Inventory

- Tier 1 Sites
- Tier 1 Sites (Polygons)
- Tier 2 Sites
- ▭ Preservation Area
- ▭ Municipal Boundaries

Wharton Borough

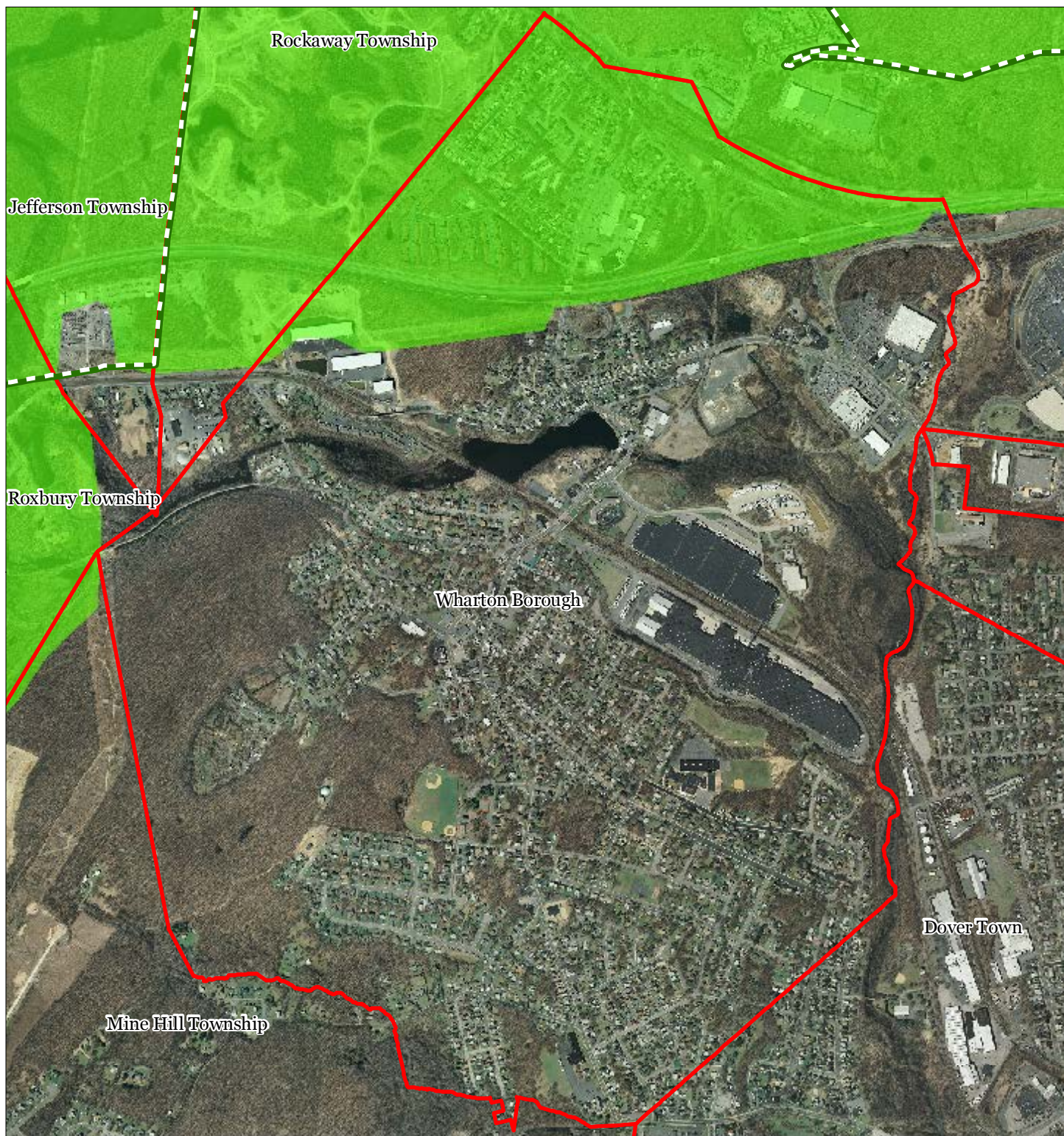





1 inch = 0.239 miles



September 2011

Exhibit E: Forest Resource Area



-  Forest Resource Area
-  Preservation Area
-  Municipal Boundaries

Wharton Borough






1 inch = 0.239 miles



September 2011

Exhibit F: Total Forest Area



-  Forested Areas
-  Preservation Area
-  Municipal Boundaries

Wharton Borough

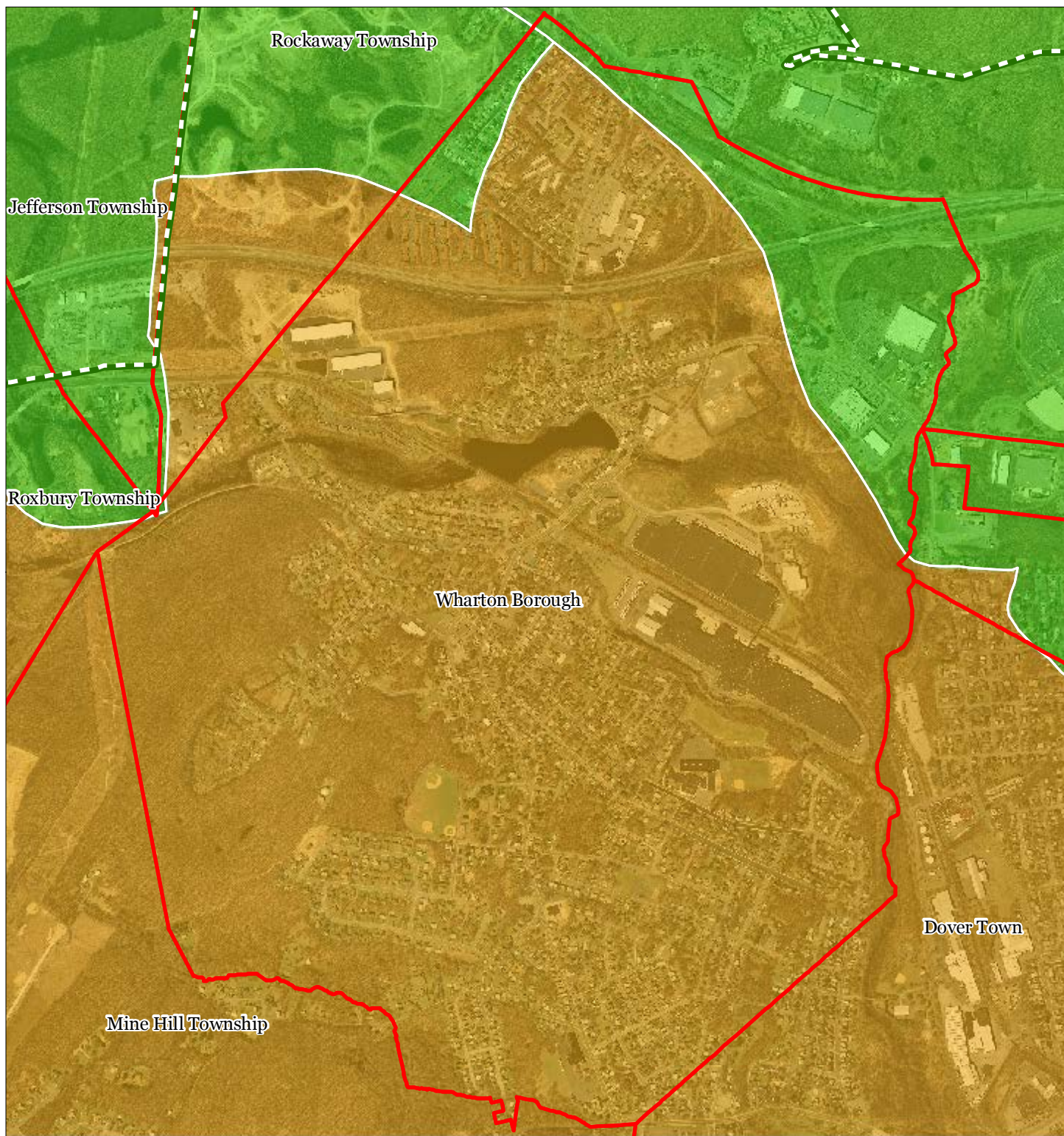


1 inch = 0.239 miles








September 2011

Exhibit G: Forest Subwatersheds



Forest Integrity by HUC14 Subwatershed

-  Low
-  Moderate
-  High
-  Preservation Area
-  Municipal Boundaries

Wharton Borough

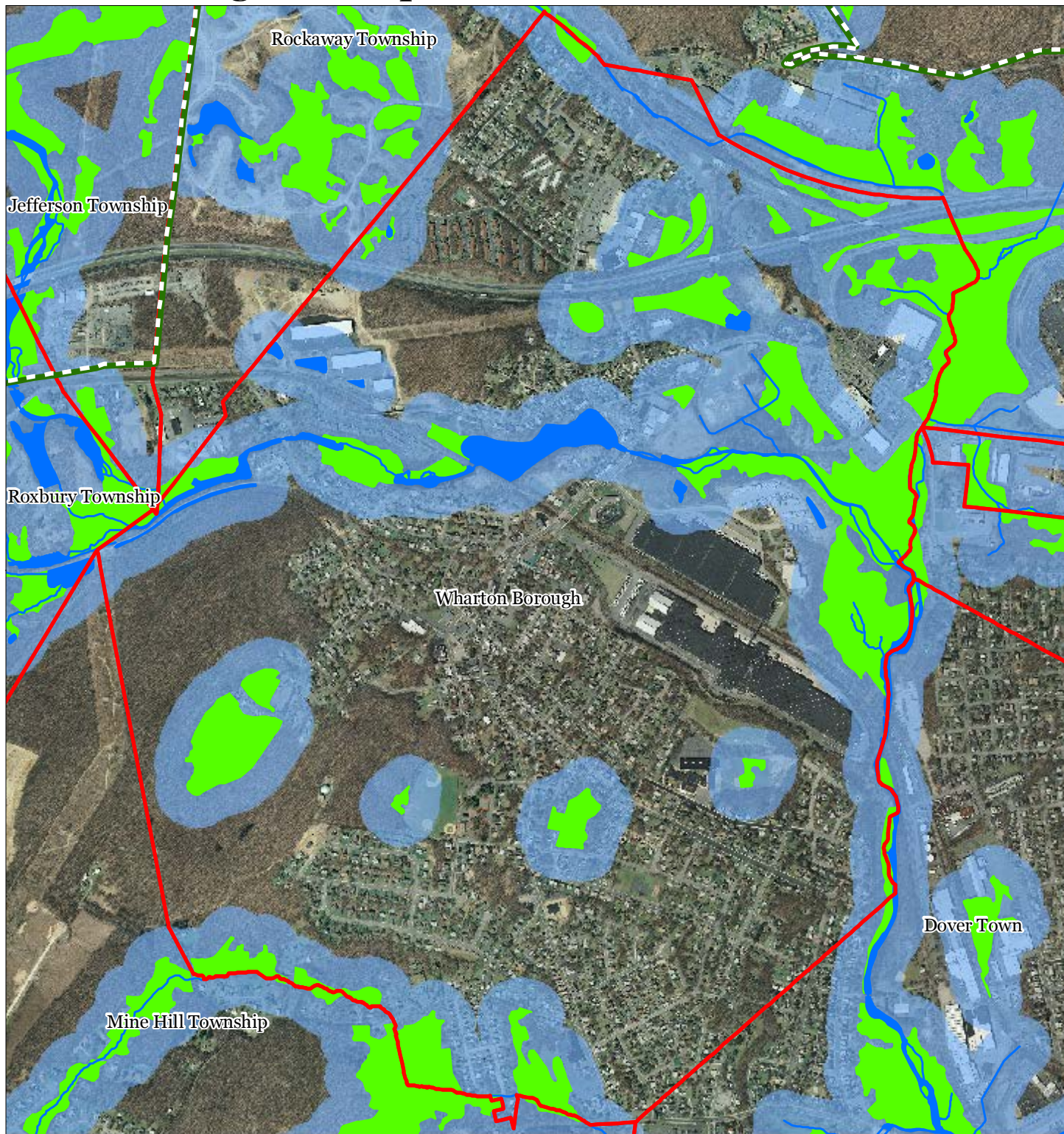


1 inch = 0.239 miles



September 2011

Exhibit H: Highlands Open Waters



-  Highlands Open Water Buffers (300ft)
-  Streams
-  Wetlands
-  Lakes & Ponds
-  Preservation Area
-  Municipal Boundaries

Wharton Borough



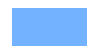


1 inch = 0.239 miles



September 2011

Exhibit I: Highlands Riparian Areas



-  Riparian Area
-  Preservation Area
-  Municipal Boundaries

Wharton Borough

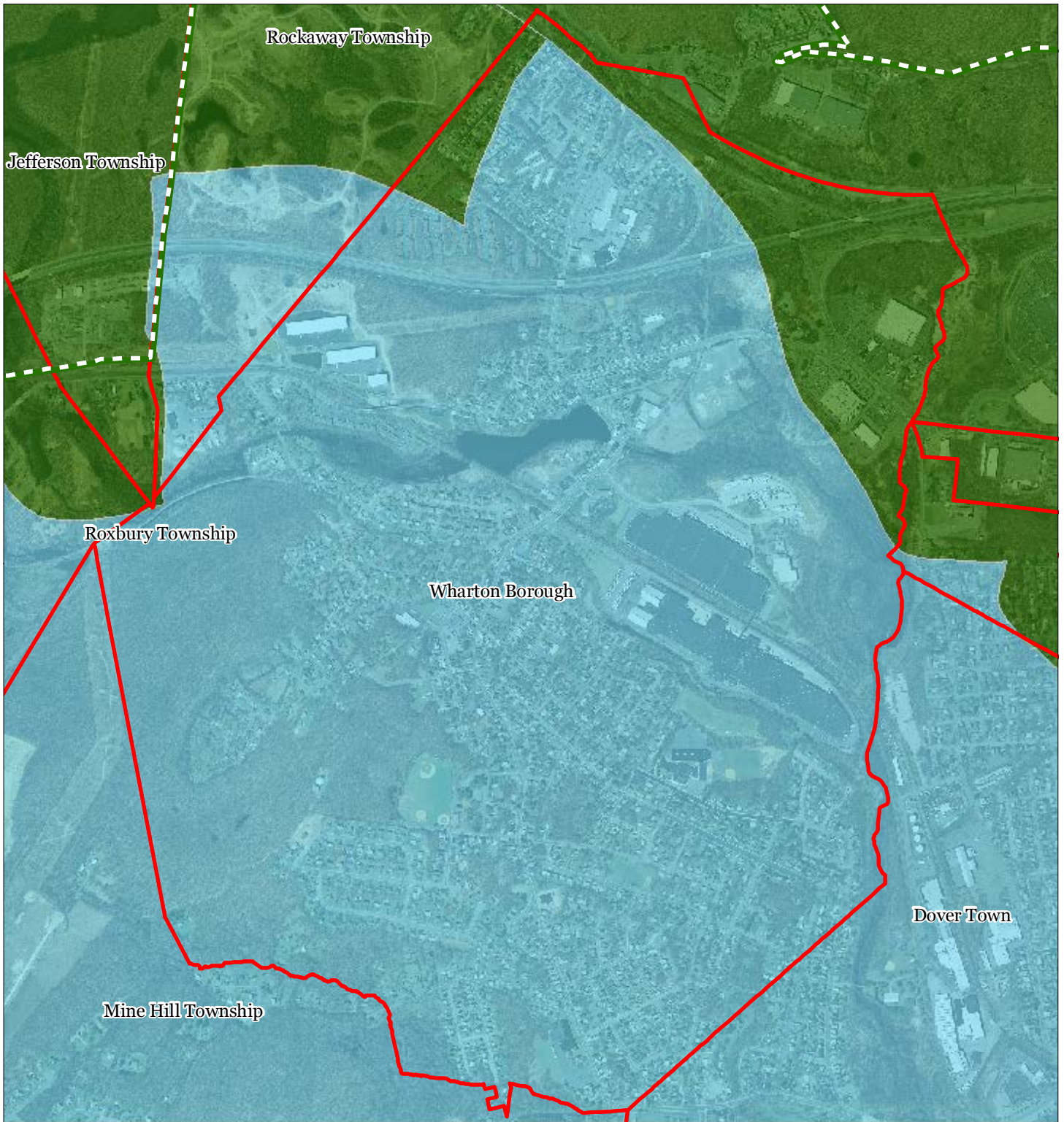


1 inch = 0.239 miles






September 2011

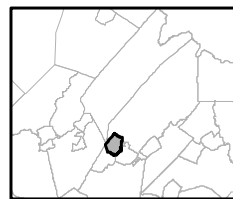
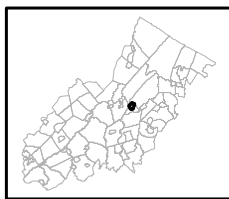
Exhibit J: Watershed Values



Watershed Values by HUC14 Subwatershed

-  Low
-  Moderate
-  High
-  Preservation Area
-  Municipal Boundaries

Wharton Borough



1 inch = 0.239 miles








September 2011

Exhibit K: Riparian Integrity



Riparian Integrity by HUC14 Subwatershed

-  Low
-  Moderate
-  High
-  Preservation Area
-  Municipal Boundaries

Wharton Borough



1 inch = 0.239 miles







September 2011

Exhibit L: Steep Slope Protection Areas



Steep Slopes

-  Moderate
-  Severe
-  Preservation Area
-  Municipal Boundaries

Wharton Borough






1 inch = 0.239 miles



September 2011

Exhibit M: Critical Wildlife Habitat



-  Critical Wildlife Habitat
-  Preservation Area
-  Municipal Boundaries

Wharton Borough

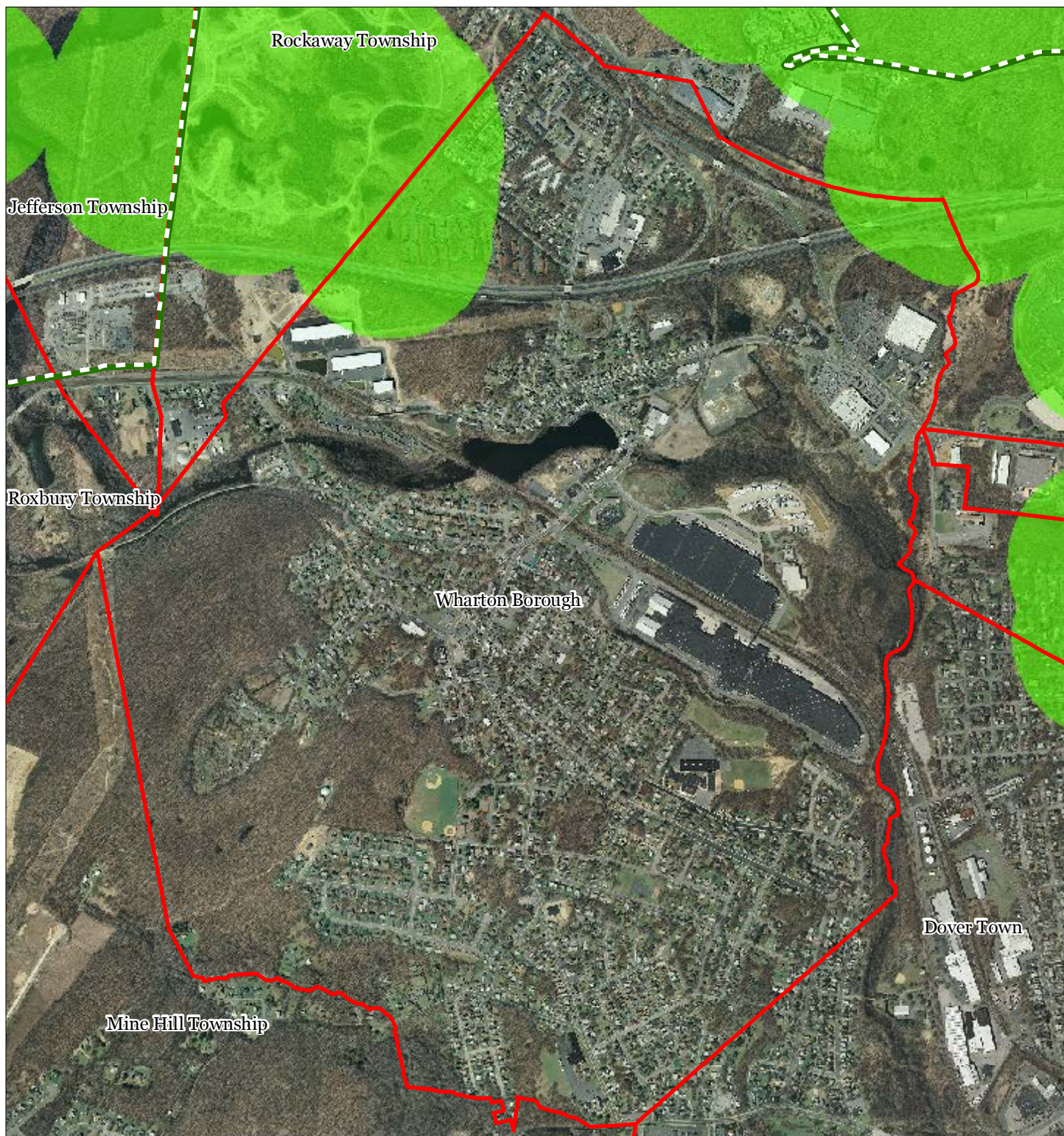





1 inch = 0.239 miles



September 2011

Exhibit O: Vernal Pools



-  Vernal Pools + 1000ft Buffer
-  Preservation Area
-  Municipal Boundaries

Wharton Borough



1 inch = 0.239 miles



September 2011

Exhibit Q: Lake Management Area



- Lakes & Ponds
- Lake Management Area
- Preservation Area
- Municipal Boundaries

Wharton Borough

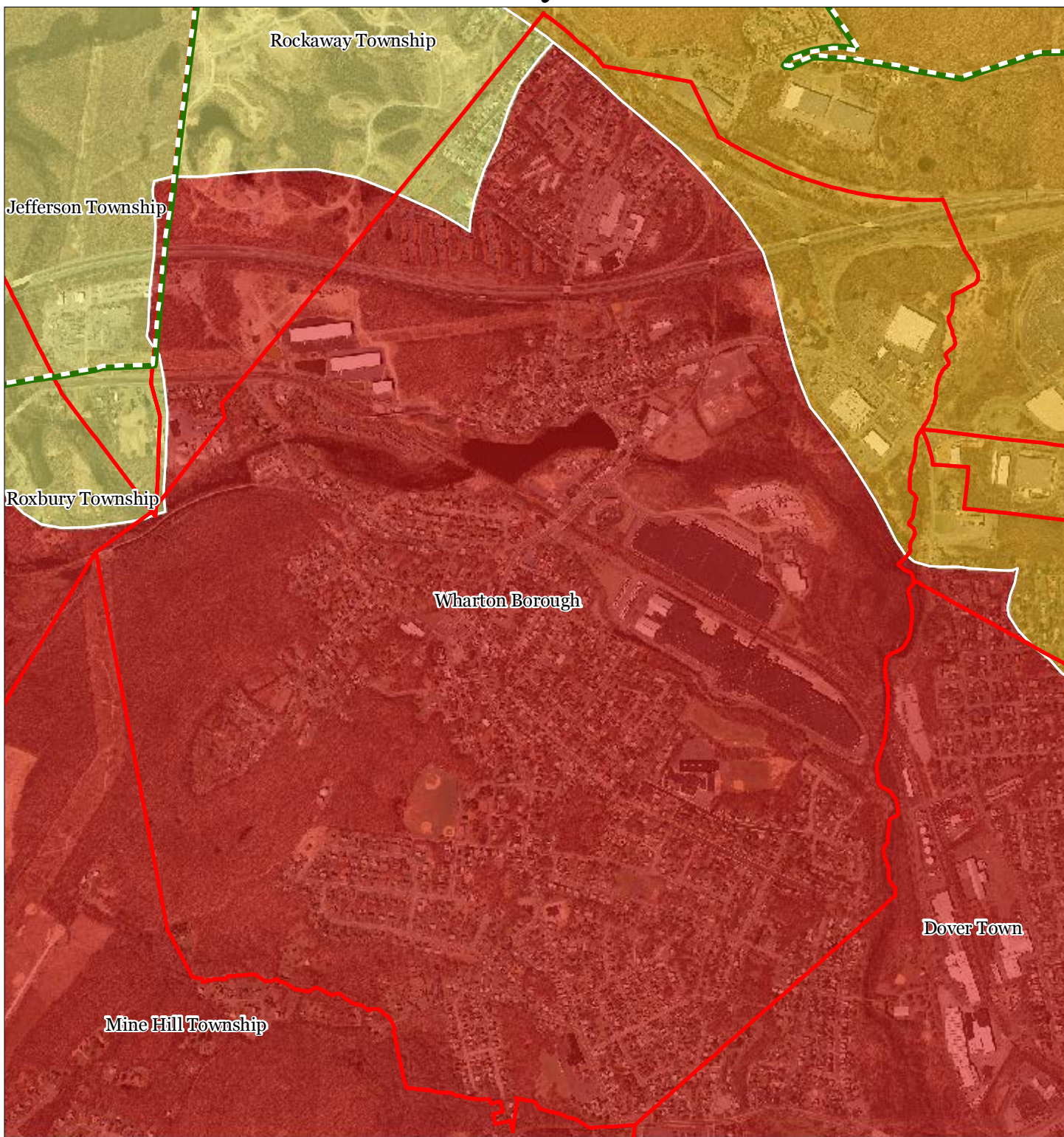


1 inch = 0.239 miles

Highlands Council
New Jersey

September 2011

Exhibit R: Net Water Availability



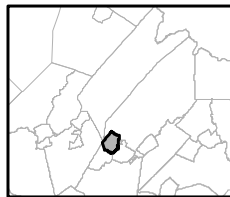
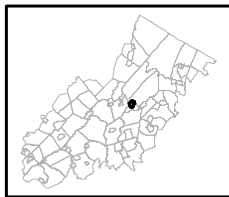
Net Water Availability By HUC14

Million Gallons Per Day (MGD)

- 0.10 - 0.39
- 0.05 - 0.09
- 0.00 - 0.04
- 0.09 - 0.00
- 0.99 - -0.10
- 7.10 - -1.00

- Preservation Area
- Municipal Boundaries

Wharton Borough






1 inch = 0.239 miles



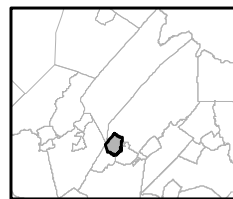
September 2011

Exhibit S: Prime Ground Water Recharge Areas



-  Prime Groundwater Recharge Areas
-  Preservation Area
-  Municipal Boundaries

Wharton Borough

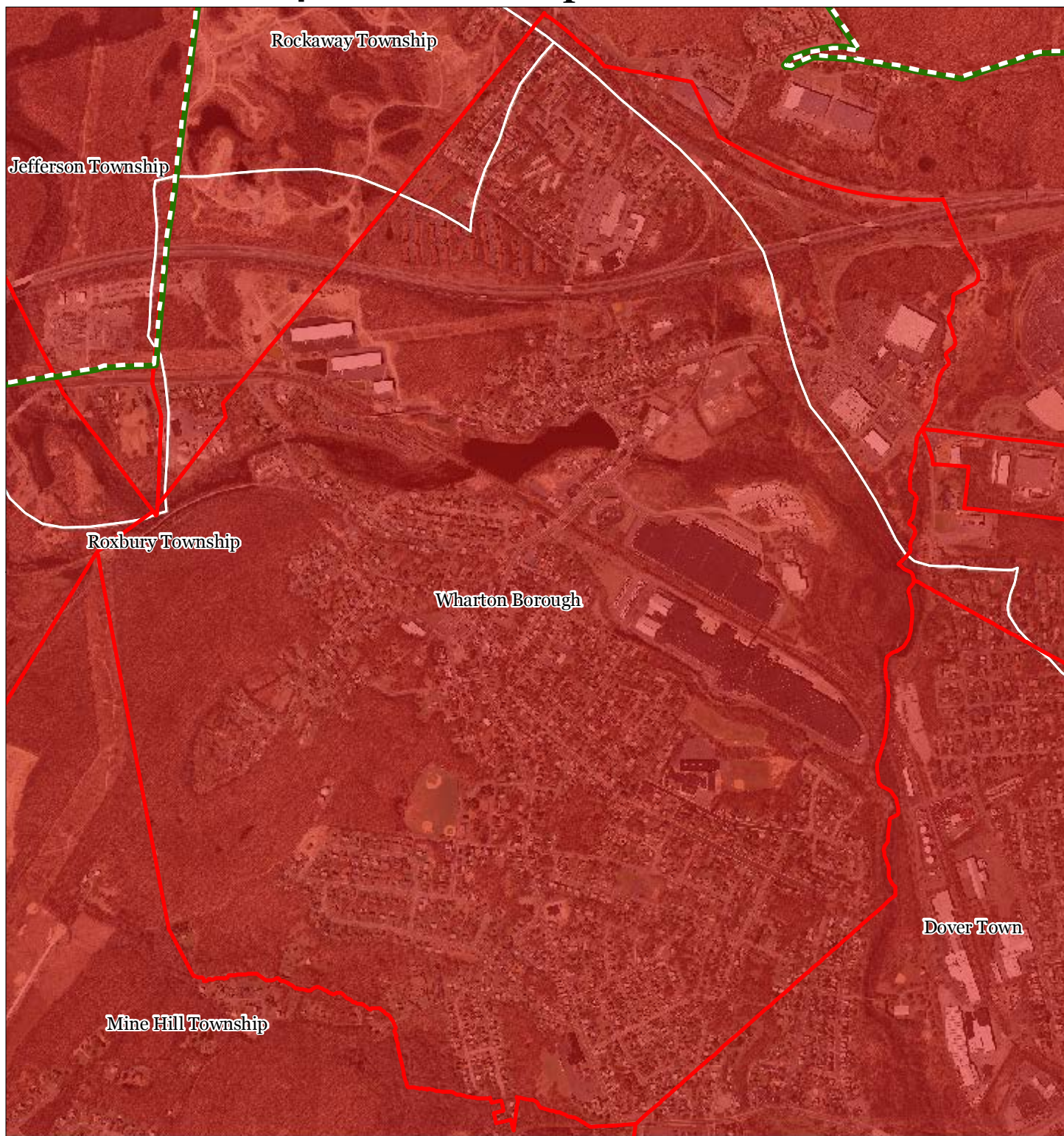


1 inch = 0.239 miles



September 2011

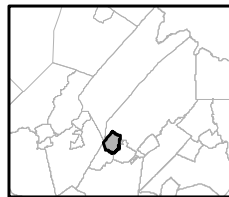
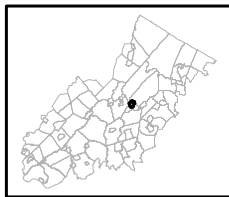
Exhibit T: HUC 14s on NJDEP Impaired Waters List



Impaired Waters Overall Assessment by HUC14 Subwatershed

- Non Impacted
- Insufficient Data Available
- Moderate
- Water Quality Impaired
- Preservation Area
- Municipal Boundaries

Wharton Borough

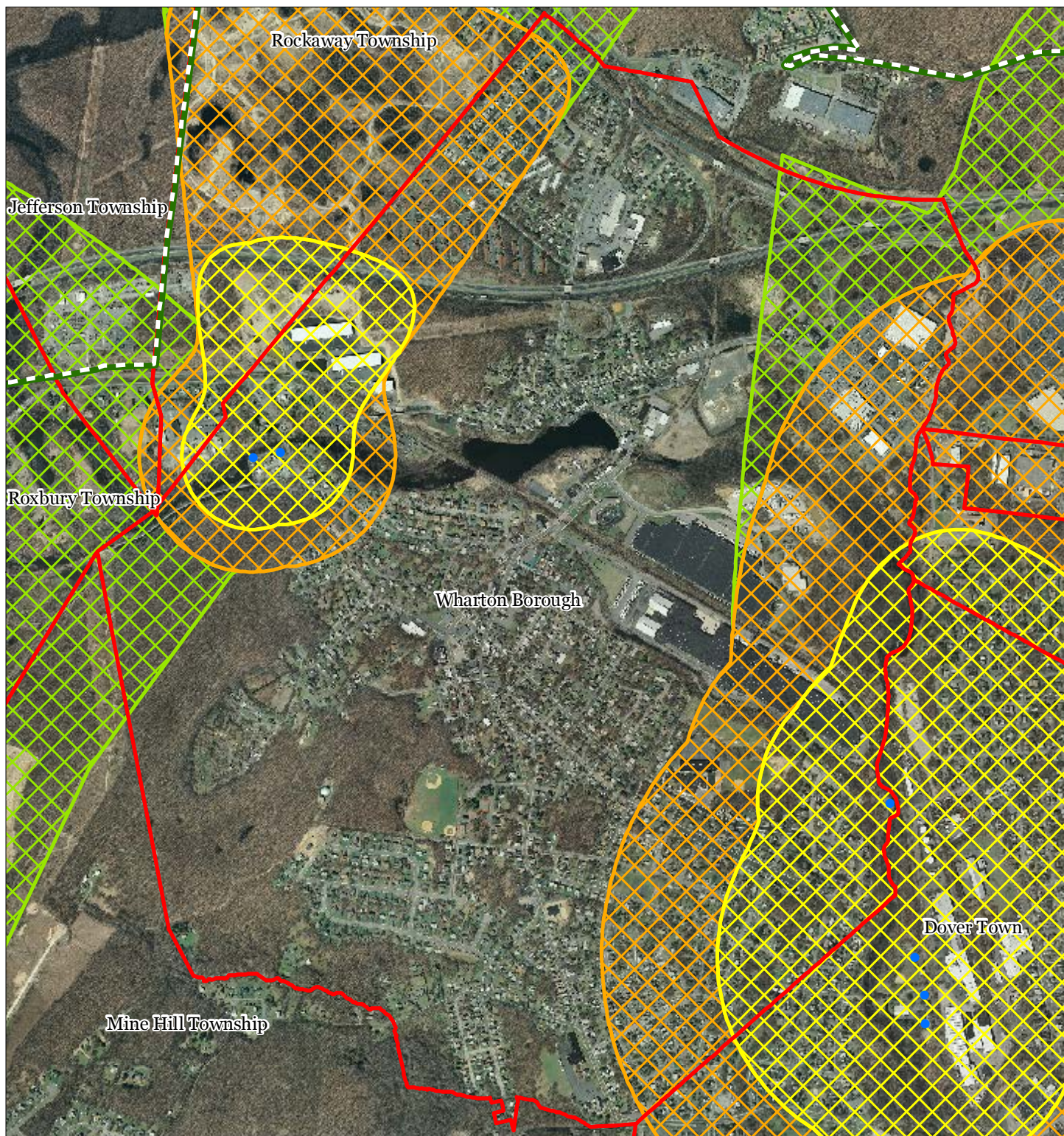


1 inch = 0.239 miles



September 2011

Exhibit U: Wellhead Protection Areas





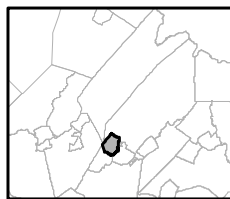
Wharton Borough

- Public Community Wells
- Public Non-Community Wells

Wellhead Protection Areas

-  2-Year Tier
-  5-Year Tier
-  12-Year Tier

-  Preservation Area
-  Municipal Boundaries

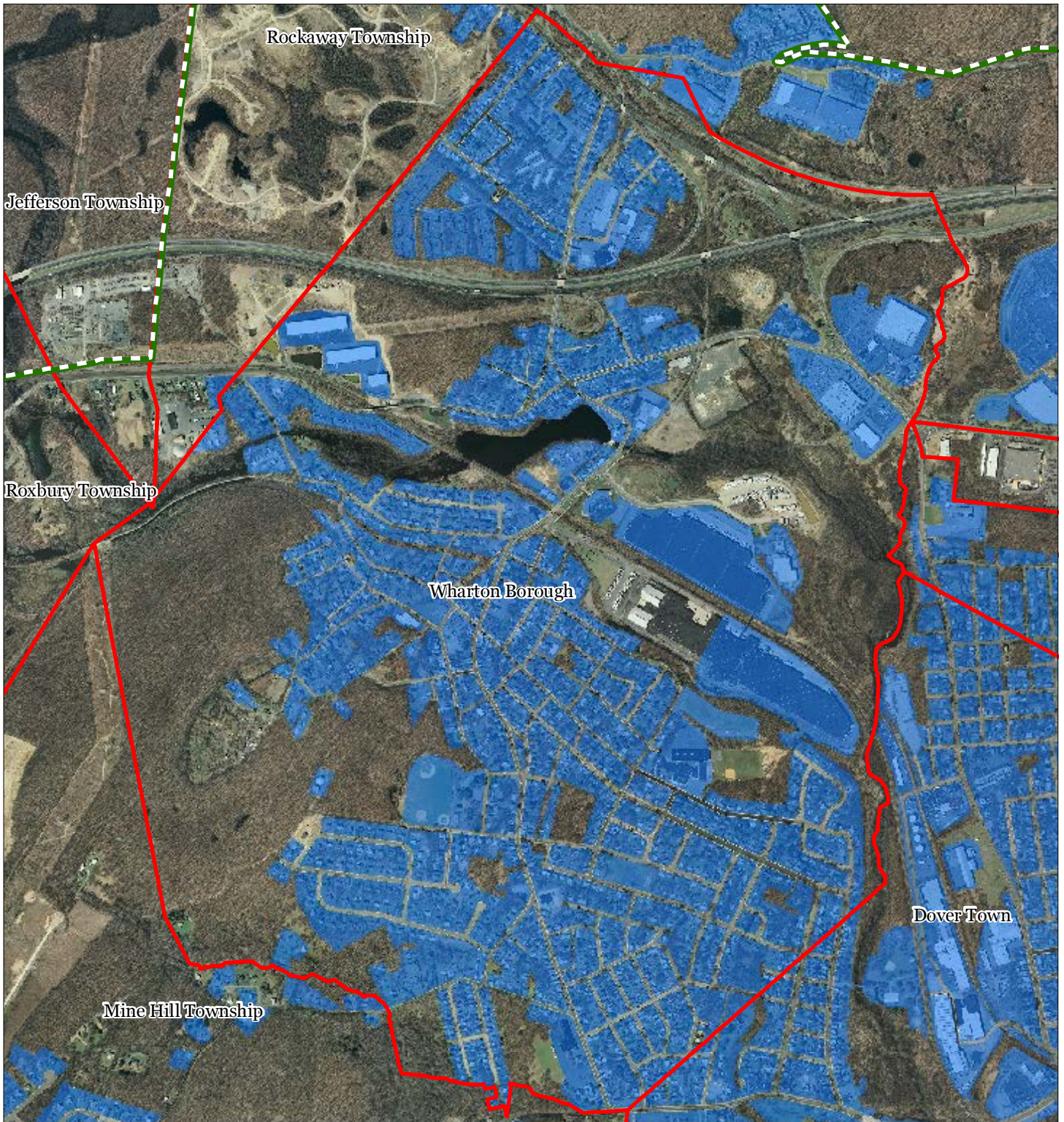





1 inch = 0.239 miles



September 2011

Exhibit V: Public Community Water Systems



-  Public Community Water Systems
-  Preservation Area
-  Municipal Boundaries

Wharton Borough



1 inch = 0.239 miles






September 2011

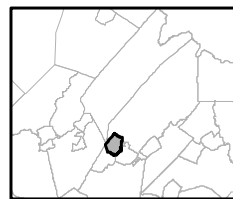
Exhibit W: Highlands Domestic Sewerage Facilities



Highlands Domestic Sewerage Facilities

-  Existing Area Served
-  Preservation Area
-  Municipal Boundaries

Wharton Borough



1 inch = 0.239 miles



September 2011

Exhibit Y: Highlands Roadway Network



Roadway Network

Interstate Highways

U.S. Routes

State Routes

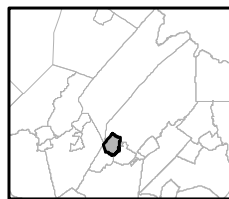
County Routes

Local Routes

Preservation Area

Municipal Boundaries

Wharton Borough

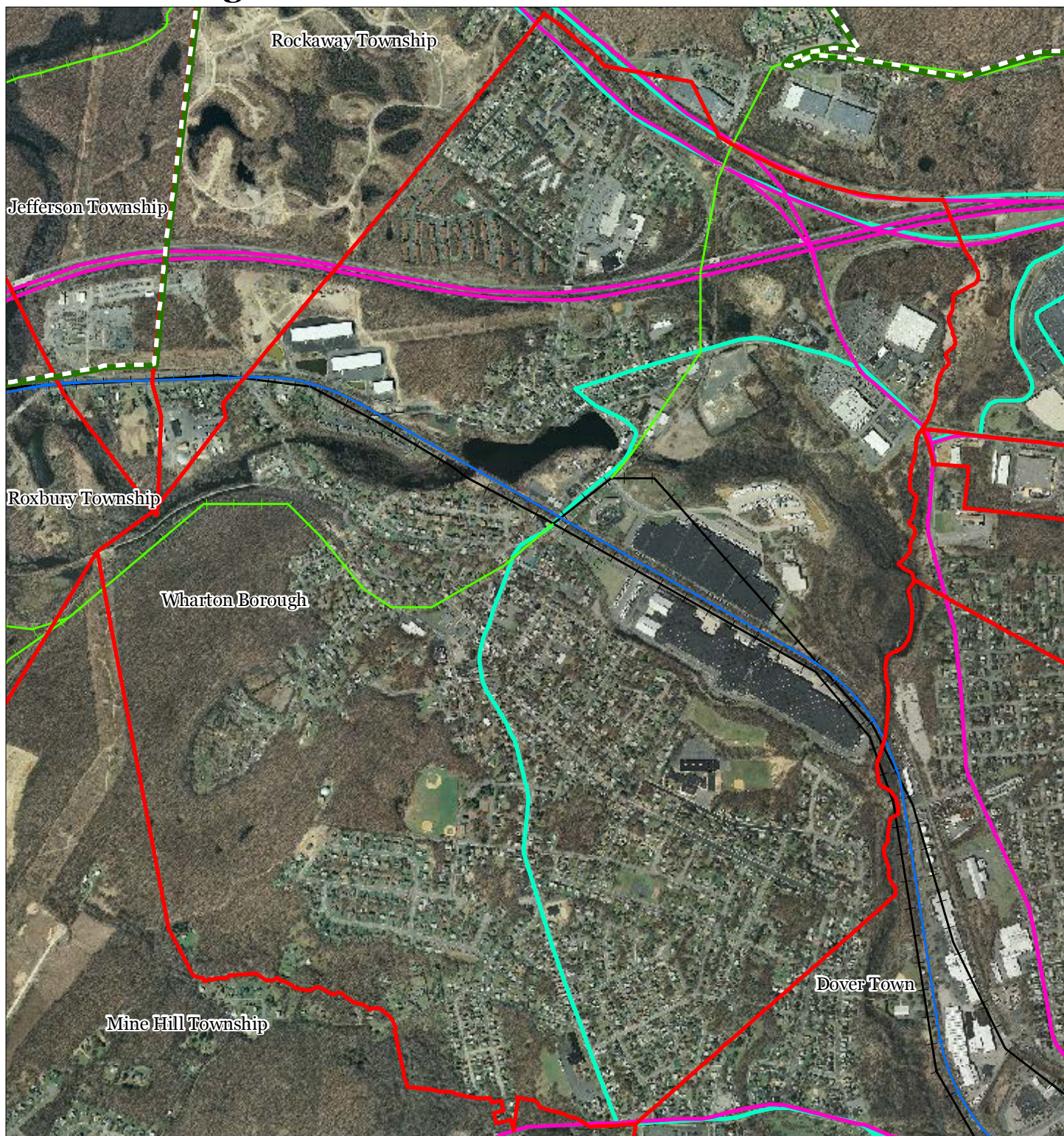


1 inch = 0.239 miles



September 2011

Exhibit Z: Highlands Transit Network



- | | |
|--------------------------------|----------------------|
| Rail Network | Rail Stations |
| Boonton Line | Park and Ride Sites |
| Main Line & Bergen County Line | Private Bus Lines |
| Morris and Essex Line | NJ Transit Bus Lines |
| Raritan Valley Line | Airports |
| Freight Rail Lines | |
| Freight Rail Lines | |
| Abandoned Freight Rail | |

Wharton Borough



1 inch = 0.239 miles

N

Exhibit AA: Preserved Lands



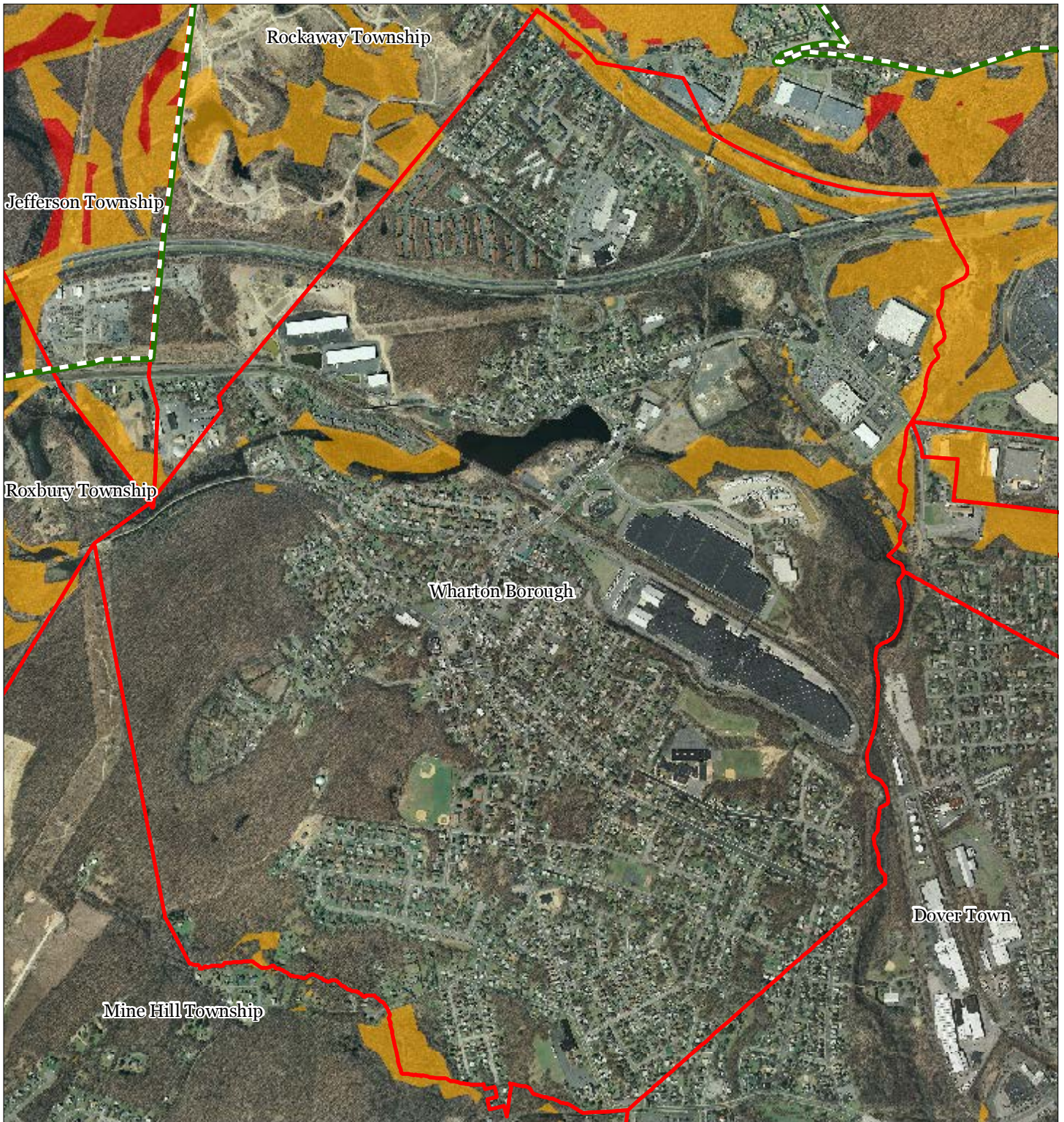
- | | |
|---|-------------------------------|
| Preserved Lands | Conservation Easements |
| Federal Open Space | Green Acres |
| State Open Space | SADC Easements |
| County Open Space | SADC Final |
| Municipal Open Space | SADC Preserved |
| Non-Profit/Private Open Space | Municipal Boundaries |
| Water Supply Watershed Lands | Preservation Area |
| Preserved Farmland | |
| Highlands Transfer of Development Lands | |

Wharton Borough







1 inch = 0.239 miles

Exhibit BB: Highlands Conservation Priority Areas



Conservation Priority Area

-  Moderate
-  High
-  Preservation Area
-  Municipal Boundaries

Wharton Borough

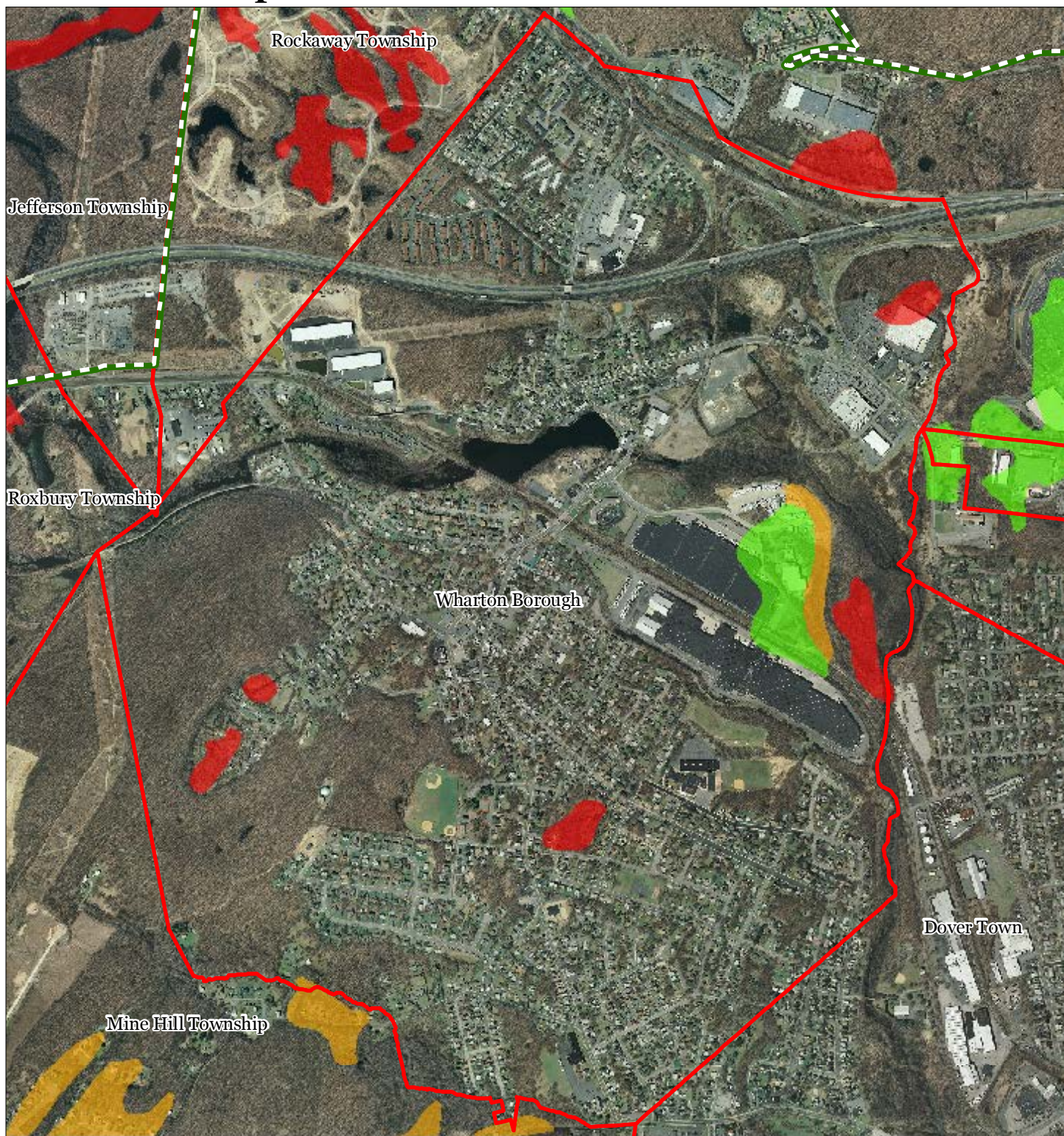


1 inch = 0.239 miles



September 2011

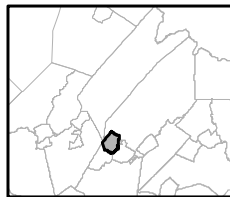
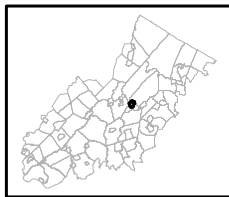
Exhibit EE: Important Farmland Soils



Important Farmland Soils

- Prime Farmland
- Farmland of Local Importance
- Farmland of Statewide Importance
- Farmland of Unique Importance
- Preservation Area
- Municipal Boundaries

Wharton Borough




1 inch = 0.239 miles



September 2011

Exhibit HH: Historic, Cultural, and Archaeological Resources Inventory



-  Preservation Area
-  Municipal Boundaries
-  Archaeological Grids (1 sqmi)
-  NJ Historic Districts
-  Historic Property Points
-  Historic Property Polygons

Wharton Borough






1 inch = 0.239 miles



September 2011

Exhibit II: Baseline Scenic Resources Inventory



-  Scenic Resources
-  Municipal Boundaries
-  Preservation Area

Wharton Borough



1 inch = 0.239 miles



September 2011

