

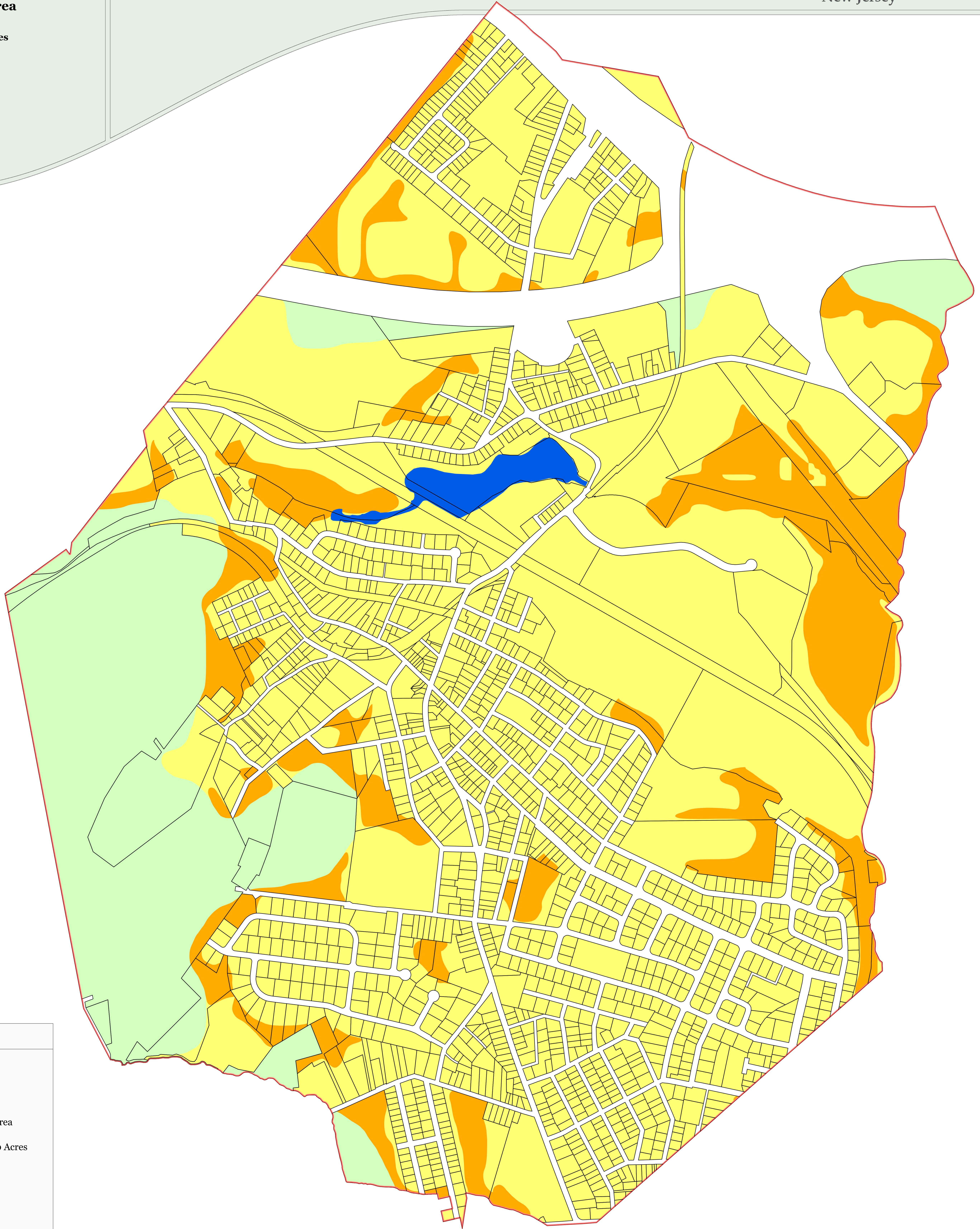
Exhibit 1:

BOROUGH OF WHARTON, MORRIS COUNTY, NJ



**Borough of Wharton
Highlands Planning Area**

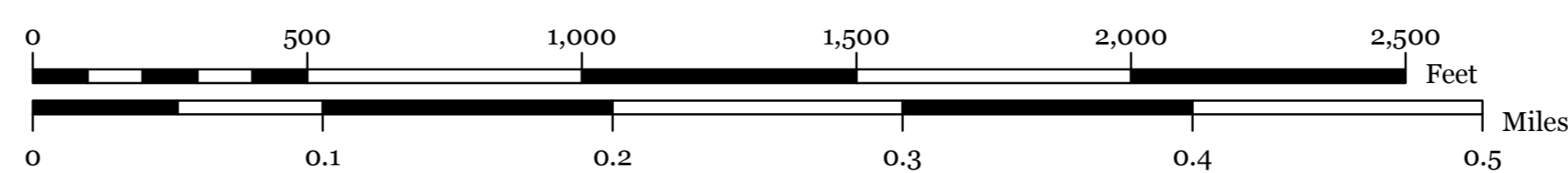
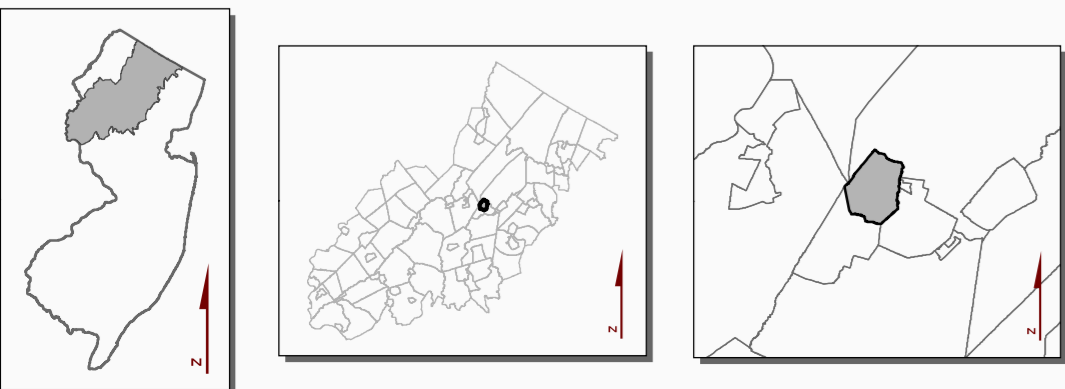
Highlands Zones and Sub-Zones



Legend

-  Municipal Boundary
-  Parcel Boundaries
-  Highlands Planning Area
-  Lakes Greater Than 10 Acres
- Land Use Capability Zone**
-  Protection
-  Existing Community
- Land Use Capability Sub-Zone**
-  Existing Community Environmentally Constrained

Locator Maps



BOROUGH OF WHARTON
MORRIS COUNTY, N.J.

MAP PREPARED BY THE NEW JERSEY
HIGHLANDS COUNCIL, JULY 29, 2011



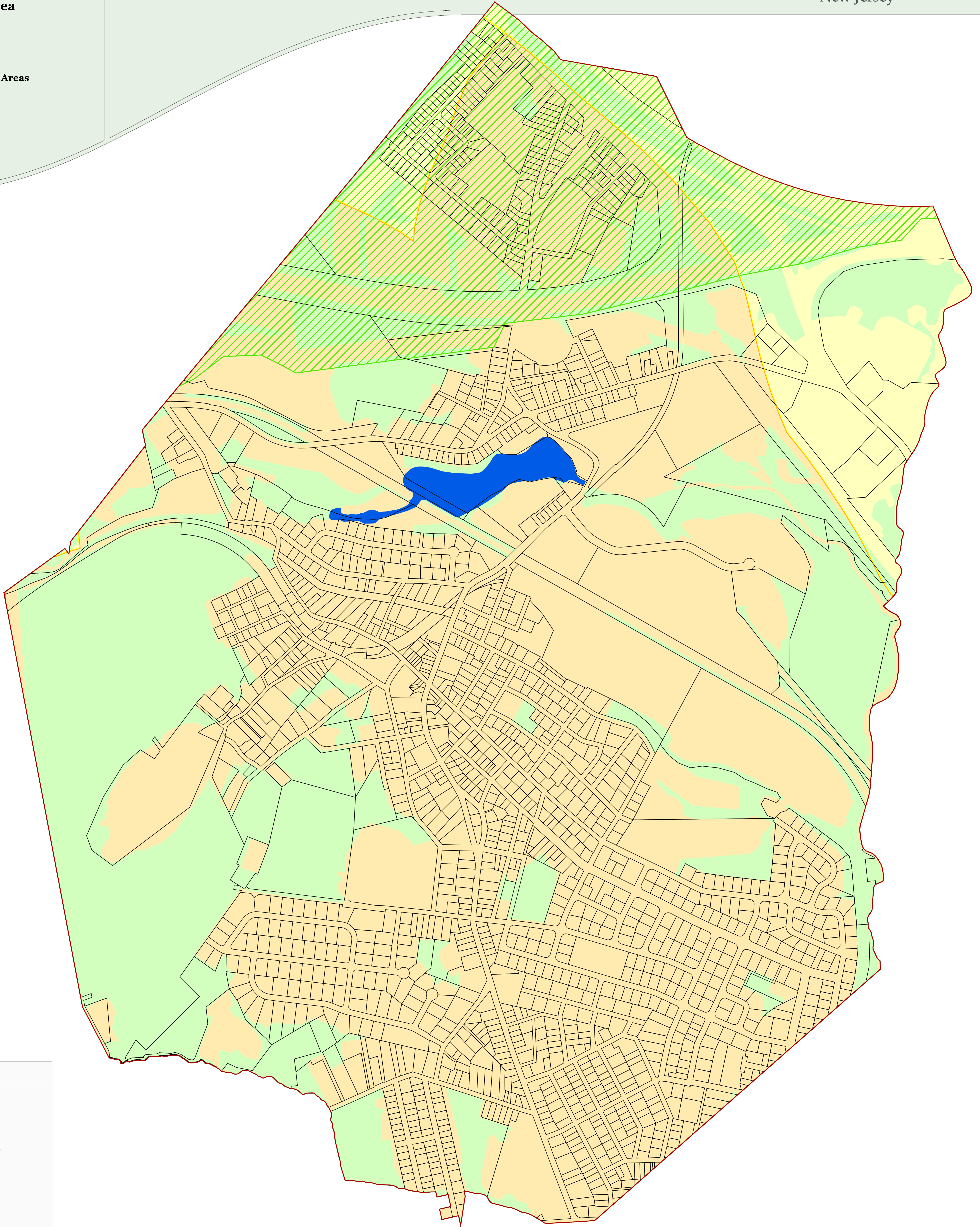
Exhibit 2:

BOROUGH OF WHARTON, MORRIS COUNTY, NJ










**Borough of Wharton
Highlands Planning Area**

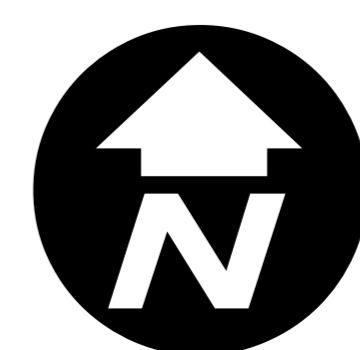
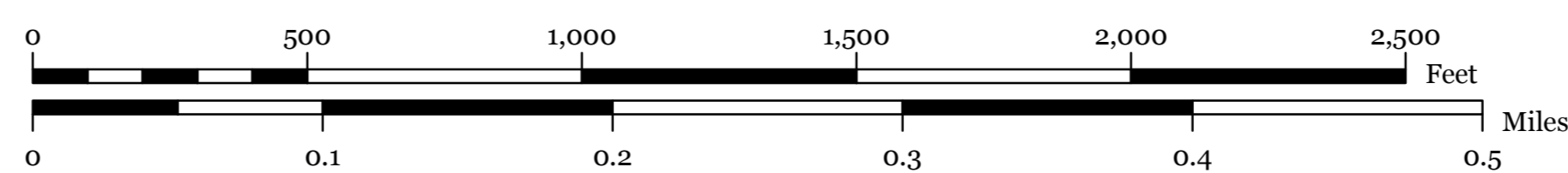
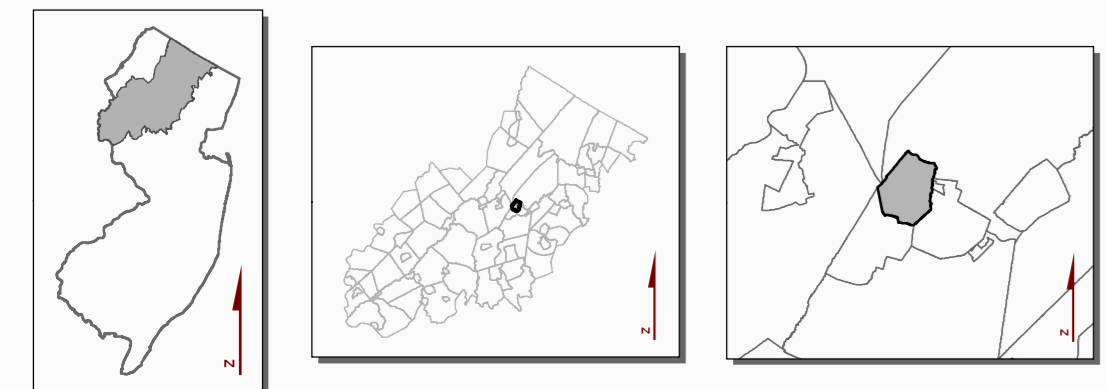
Forest Resource Area
Total Forest Area
Forest Subwatershed Integrity Areas



Legend

-  Municipal Boundary
-  Parcel Boundaries
-  Lakes Greater Than 10 Acres
-  Forest Resource Area
-  Total Forest Area
- Forest Integrity
By HUC-14 Subwatershed
 -  Moderate
 -  High

Locator Maps



**BOROUGH OF
WHARTON**
MORRIS COUNTY, N.J.

MAP PREPARED BY THE NEW JERSEY
HIGHLANDS COUNCIL, JULY 29, 2011



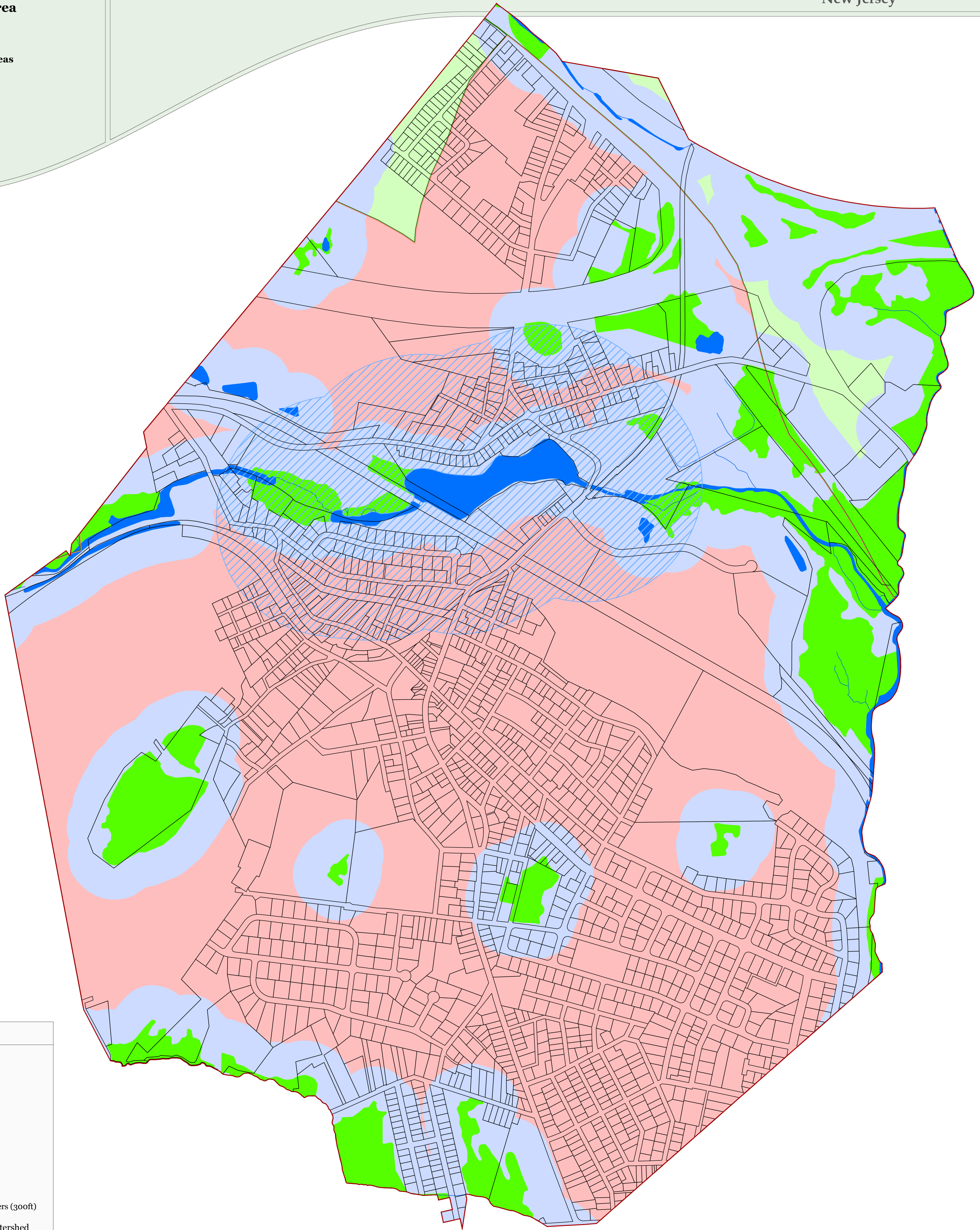
Exhibit 3:

BOROUGH OF WHARTON, MORRIS COUNTY, NJ



Borough of Wharton
Highlands Planning Area

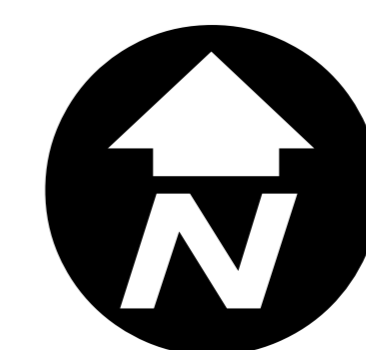
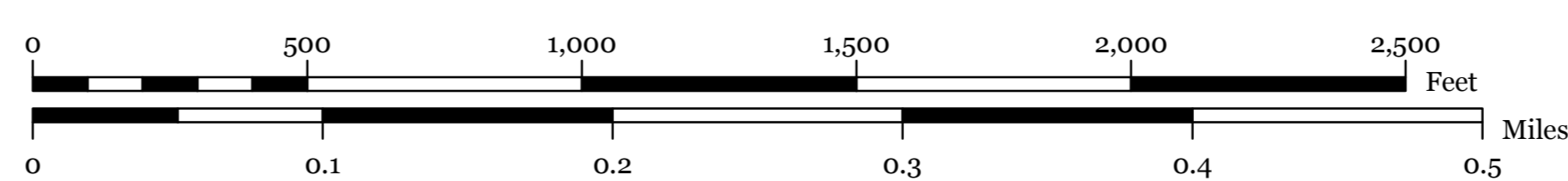
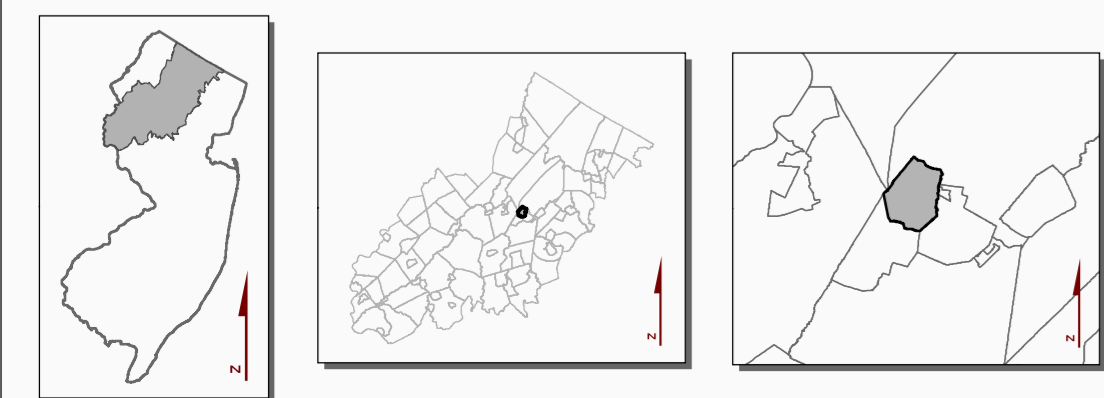
Highlands Open Waters
Watershed Resource Value Areas
Lake Management Areas



Legend

- Municipal Boundary
- Parcel Boundaries
- Lake Management Areas
- Lakes & Ponds
- Streams
- Wetlands
- Highlands Open Water Buffers (300ft)
- Watershed Values by HUC14 Subwatershed
 - Low
 - High

Locator Maps



BOROUGH OF WHARTON
MORRIS COUNTY, N.J.
MAP PREPARED BY THE NEW JERSEY
HIGHLANDS COUNCIL, JULY 29, 2011

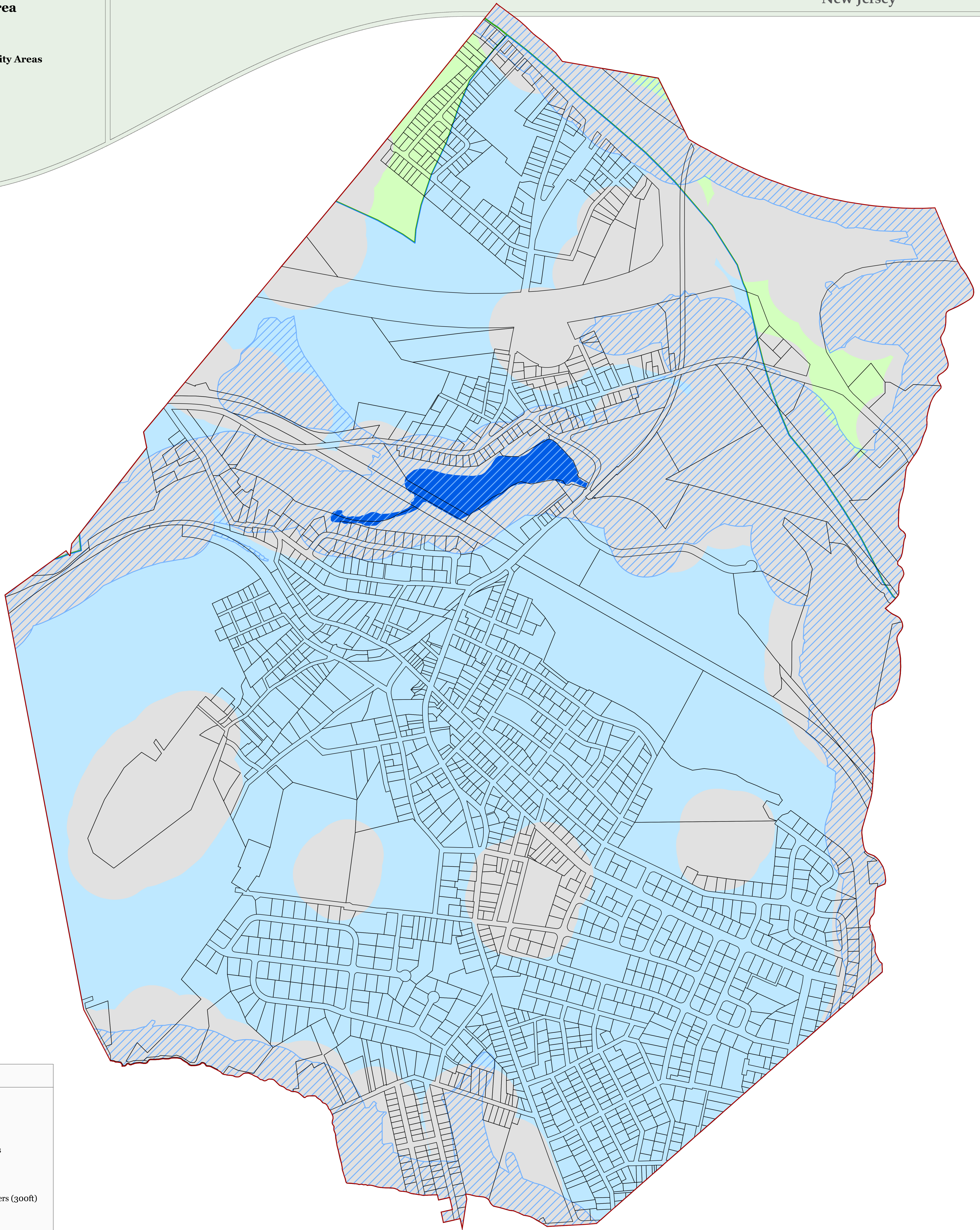
Exhibit 4:

BOROUGH OF WHARTON, MORRIS COUNTY, NJ



Borough of Wharton
Highlands Planning Area

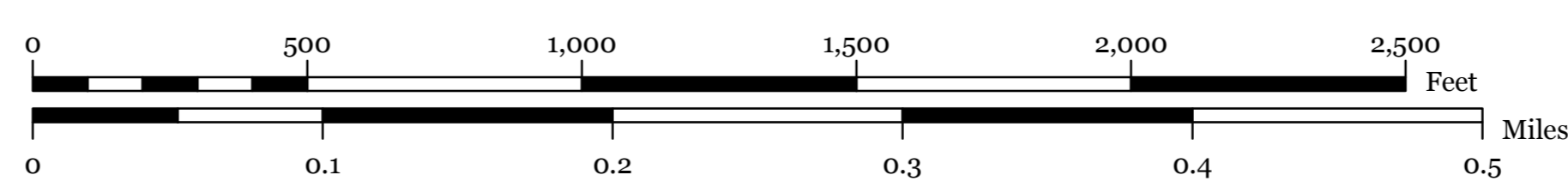
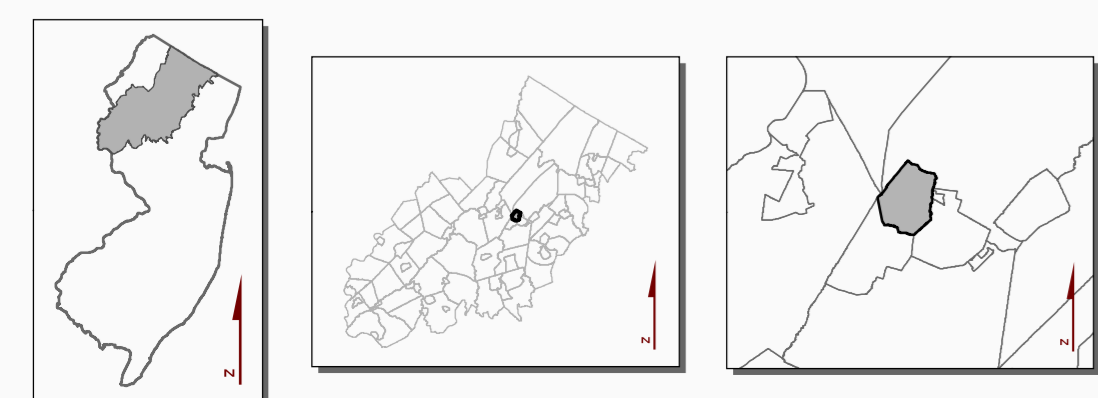
Riparian Area
Riparian Subwatershed Integrity Areas



Legend

- Municipal Boundary
- Parcel Boundaries
- Lakes Greater Than 10 Acres
- Riparian Area
- Highlands Open Water Buffers (300ft)
- Riparian Integrity**
By HUC-14 Subwatershed
 - Low
 - High

Locator Maps



BOROUGH OF WHARTON
MORRIS COUNTY, N.J.

MAP PREPARED BY THE NEW JERSEY
HIGHLANDS COUNCIL, JULY 29, 2011

Exhibit 5:

Borough of Wharton
Highlands Planning Area

Steep Slope Protection Area

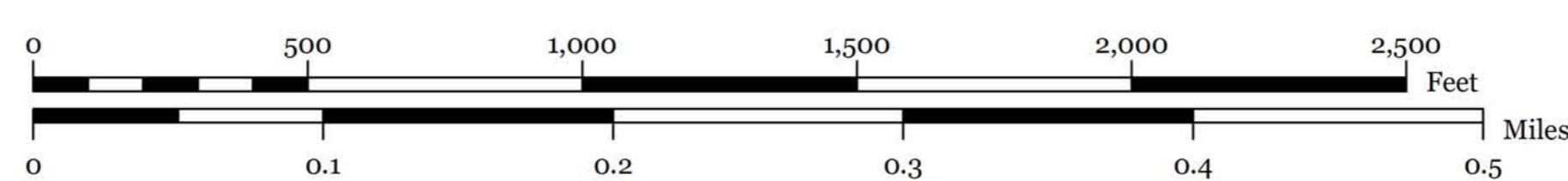
BOROUGH OF WHARTON, MORRIS COUNTY, NJ



Legend

- Municipal Boundary
- Parcel Boundaries
- Lakes Greater Than 10 Acres
- Steep Slope Protection Area
 - Severely Constrained
 - Moderately Constrained
 - Constrained/Limited Constrained

Locator Maps



BOROUGH OF
WHARTON
MORRIS COUNTY, N.J.

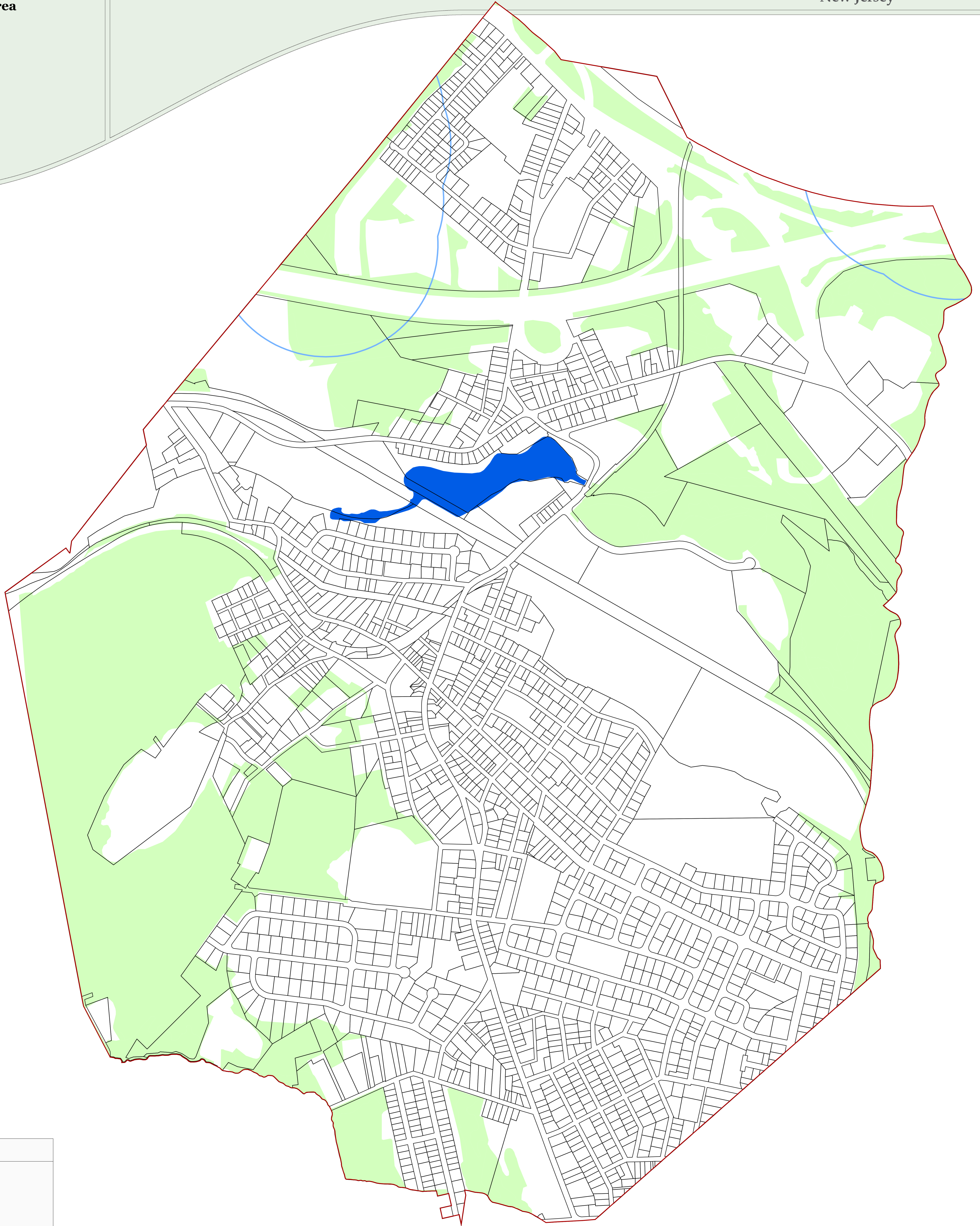
MAP PREPARED BY THE NEW JERSEY
HIGHLANDS COUNCIL, JULY 29, 2011

Exhibit 6:






BOROUGH OF WHARTON, MORRIS COUNTY, NJ

Borough of Wharton
Highlands Planning Area

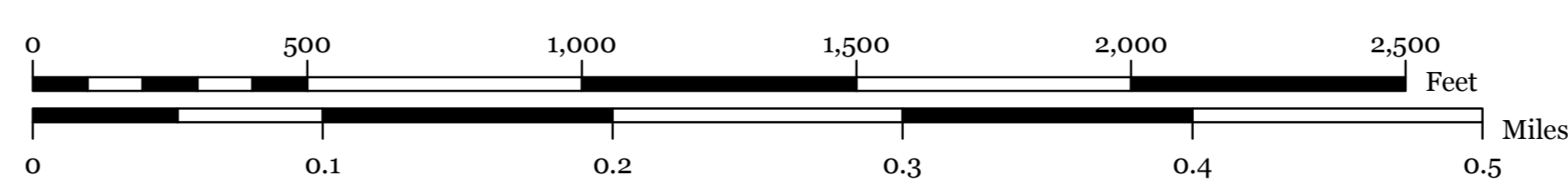
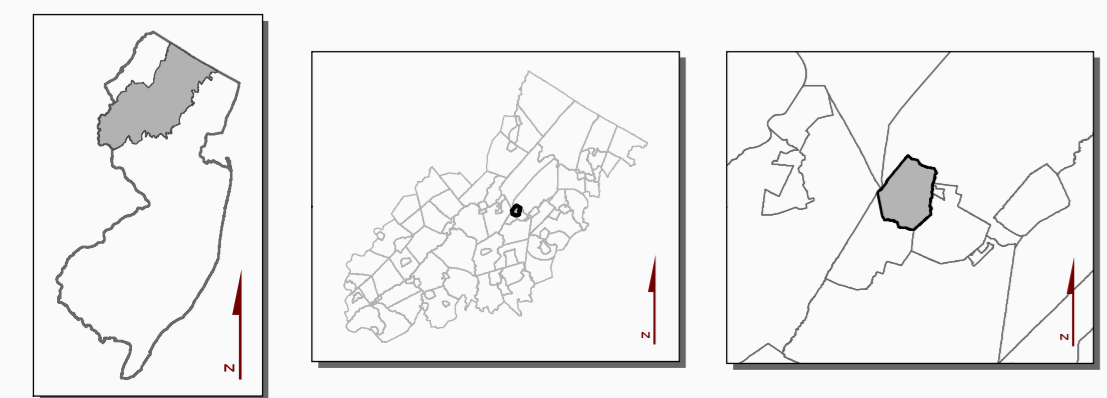
Critical Wildlife Habitat
Vernal Pools



Legend

-  Municipal Boundary
-  Parcel Boundaries
-  Lakes Greater Than 10 Acres
-  Vernal Pools + 100ft Buffer
-  Critical Wildlife Habitat

Locator Maps



BOROUGH OF
WHARTON
MORRIS COUNTY, N.J.
MAP PREPARED BY THE NEW JERSEY
HIGHLANDS COUNCIL, JULY 29, 2011



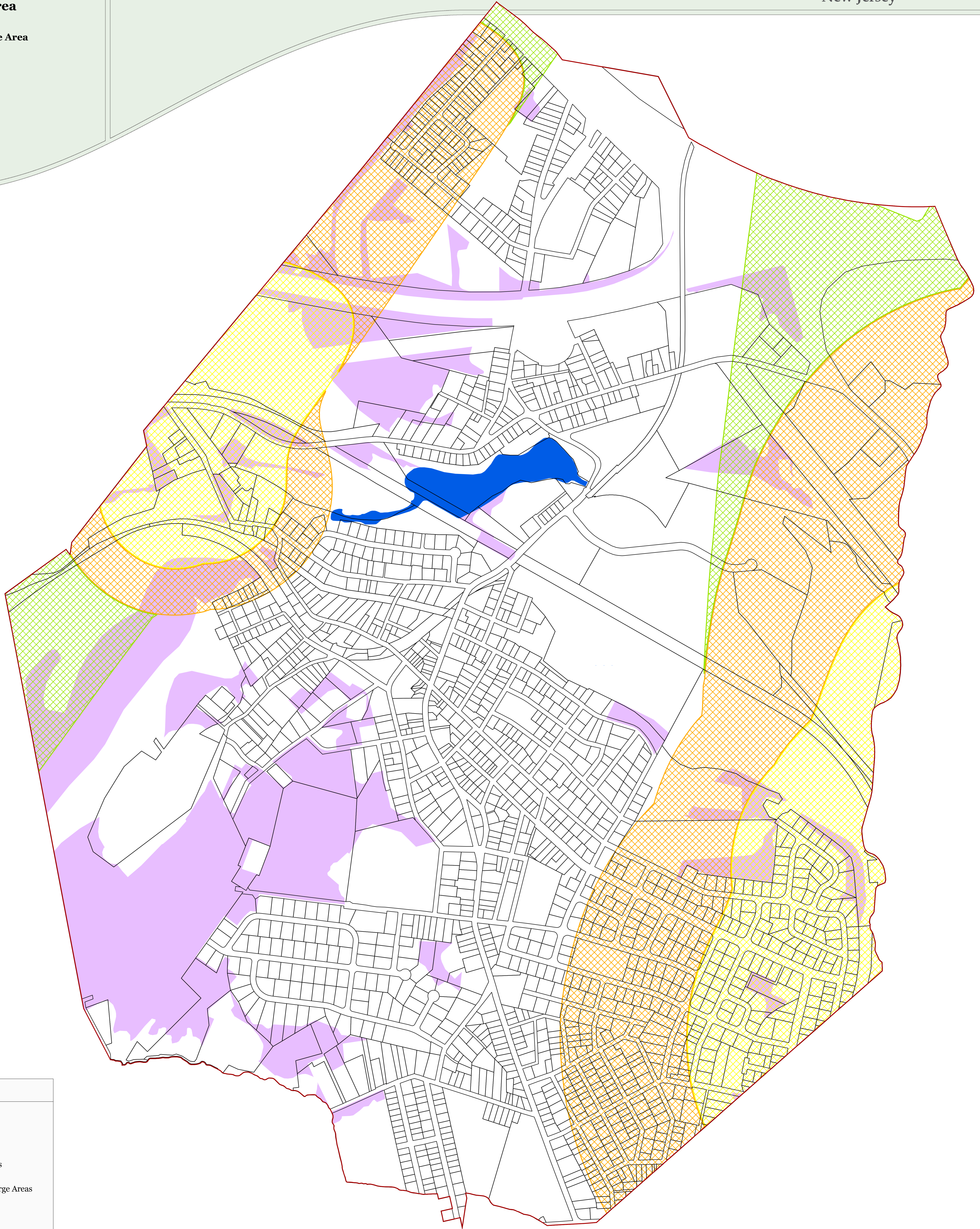
Exhibit 7:

BOROUGH OF WHARTON, MORRIS COUNTY, NJ



**Borough of Wharton
Highlands Planning Area**

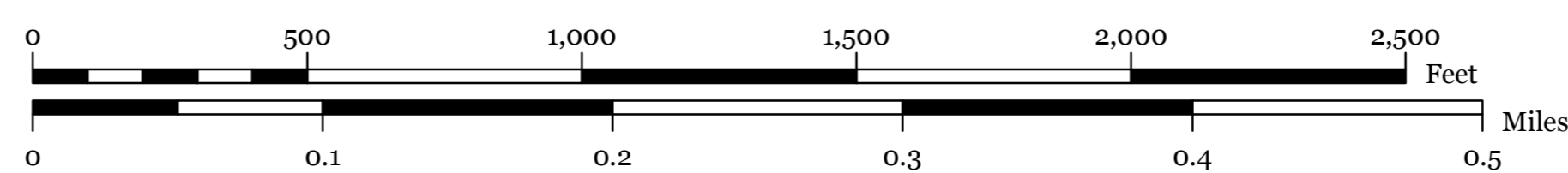
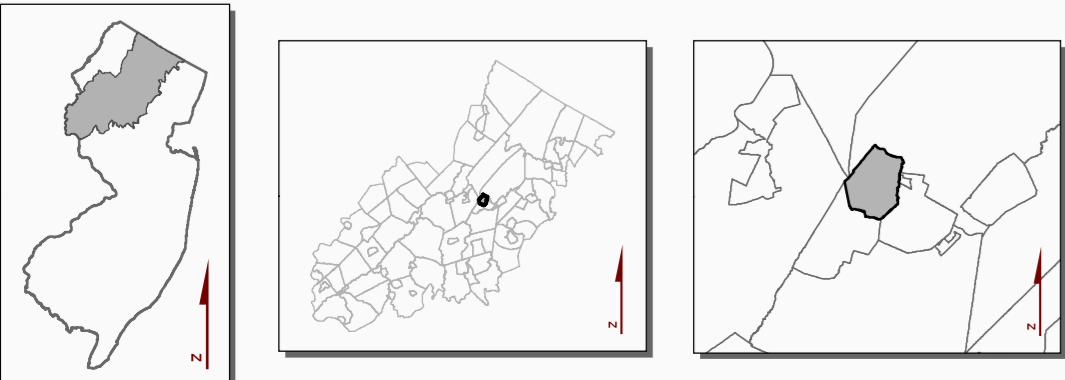
**Prime Ground Water Recharge Area
Wellhead Protection Areas**



Legend

-  Municipal Boundary
-  Parcel Boundaries
-  Lakes Greater Than 10 Acres
-  Prime Ground Water Recharge Areas
- Wellhead Protection Areas**
-  (Tier 1) 2-Year
-  (Tier 2) 5-Year
-  (Tier 3) 12-Year

Locator Maps



**BOROUGH OF
WHARTON**
MORRIS COUNTY, N.J.

MAP PREPARED BY THE NEW JERSEY
HIGHLANDS COUNCIL, JULY 29, 2011



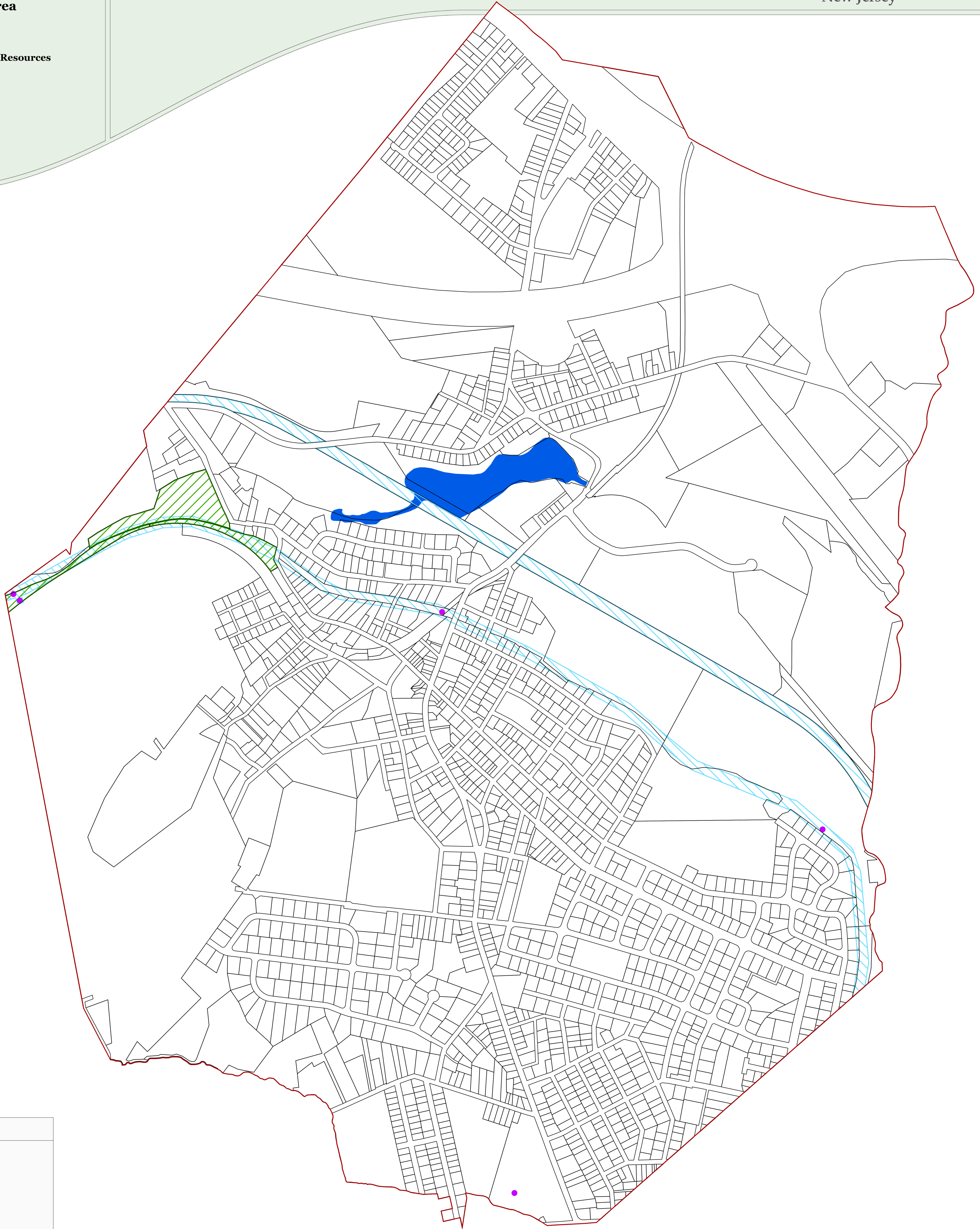
Exhibit 8:

BOROUGH OF WHARTON, MORRIS COUNTY, NJ



Borough of Wharton
Highlands Planning Area

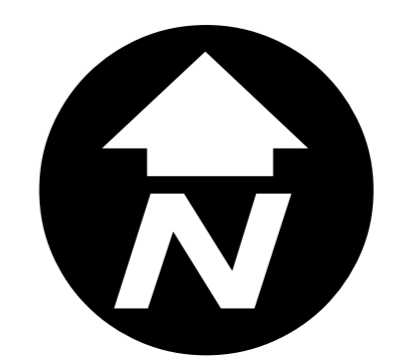
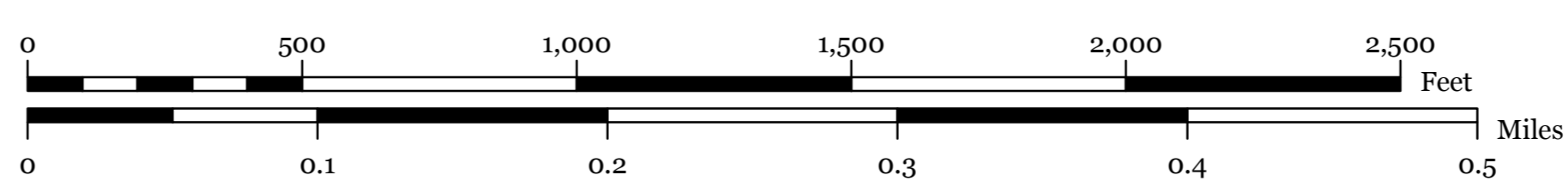
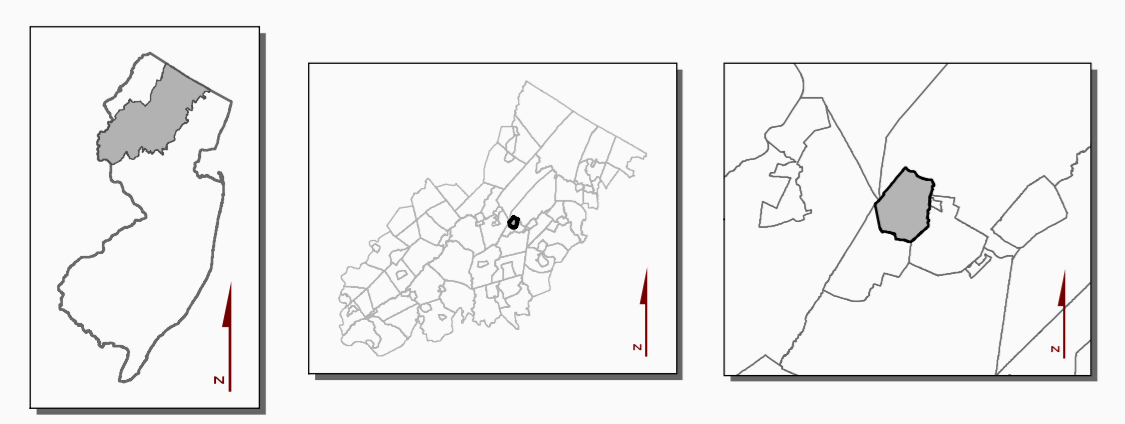
Highlands Historic, Cultural
and Archaeological Resources
Highlands Scenic Resources



Legend

- Municipal Boundary
- Parcel Boundaries
- Scenic Resources
- Lakes Greater Than 10 Acres
- Historic Properties
- NJ Historic Districts

Locator Maps



BOROUGH OF
WHARTON
MORRIS COUNTY, N.J.
MAP PREPARED BY THE NEW JERSEY
HIGHLANDS COUNCIL, JULY 29, 2011

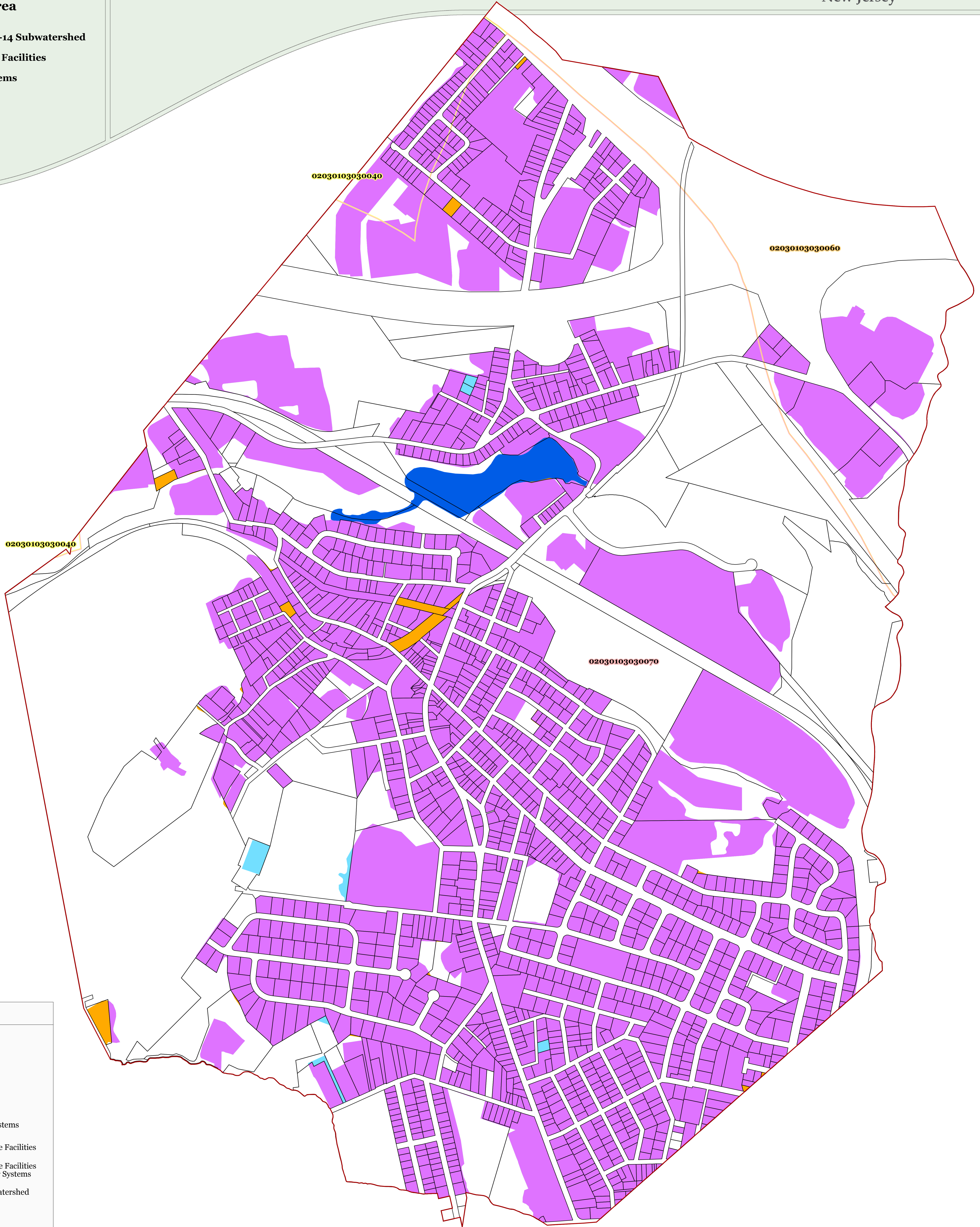
Exhibit 9:

BOROUGH OF WHARTON, MORRIS COUNTY, NJ



Borough of Wharton
Highlands Planning Area

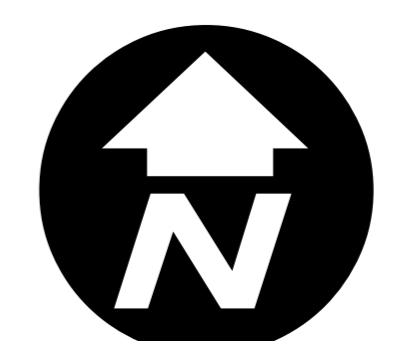
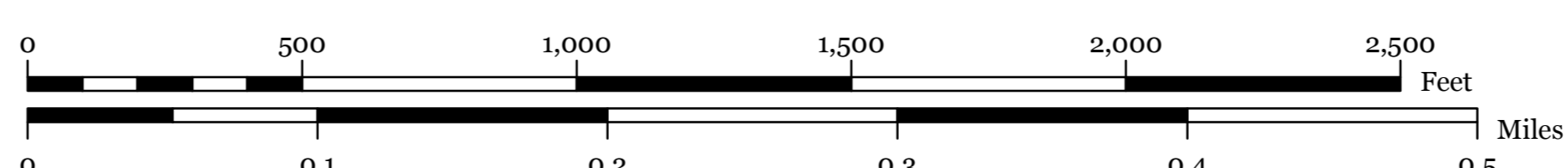
Net Water Availability by HUC-14 Subwatershed
Highlands Domestic Sewerage Facilities
Public Community Water Systems



Legend

- Municipal Boundary
- Parcel Boundaries
- Lakes Greater Than 10 Acres
- Existing Area Served for:
 - Public Community Water Systems
 - Highlands Domestic Sewerage Facilities
 - Highlands Domestic Sewerage Facilities and Public Community Water Systems
- Net Water Availability By HUC14 Subwatershed
Million Gallons Per Day (MGD)
 - 0.09 - -0.01
 - 0.99 - -0.10
 - 7.10 - -1.00

Locator Maps



BOROUGH OF
WHARTON
MORRIS COUNTY, N.J.
MAP PREPARED BY THE NEW JERSEY
HIGHLANDS COUNCIL, JULY 29, 2011