

The Highlands Trail

New Jersey Section



The Highlands Trail extends over 150 miles to connect the Delaware and Hudson Rivers, continuing beyond both into Pennsylvania and Connecticut. It showcases the natural beauty of the local Highlands Region and connects local communities with the incredible recreational opportunities in their own backyards.

The New Jersey Highlands Water Protection and Planning Council funded enhancements to signage and mapping along the New Jersey portion of the Highlands Trail, which runs 130 miles from the Riegelsville Bridge in Pohatcong, NJ to the New York border in West Milford, NJ. As part of the project, 500 blazes (trail markers) and 88 signs were created and installed. In addition, a complete end-to-end trail map is now available free via the Avenza Maps mobile application. Use the QR code on the other side of this flyer for more information.



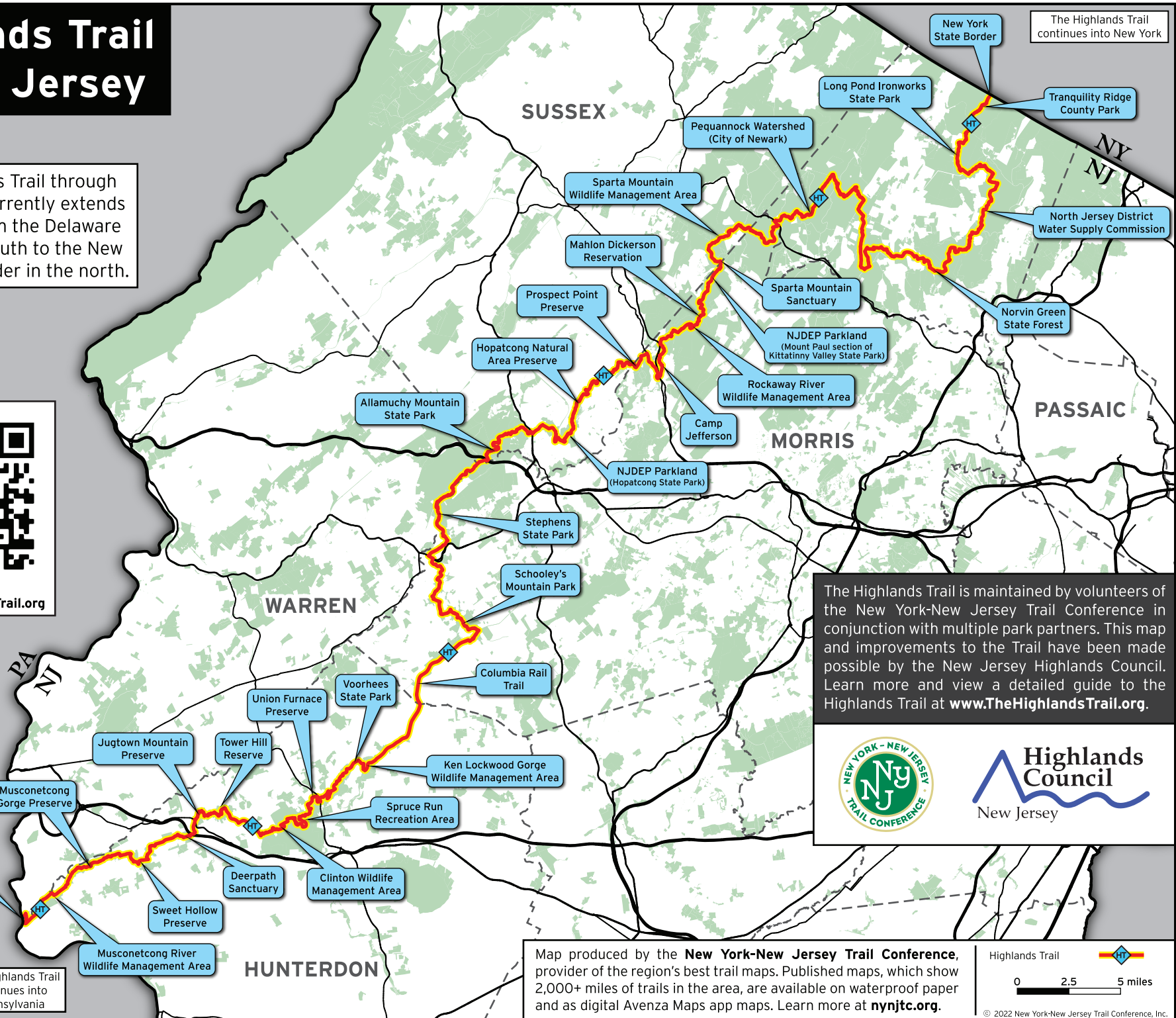
Highlands Trail, Allamuchy Mountain State Park

Highlands Trail in New Jersey

The Highlands Trail through New Jersey currently extends 130 miles, from the Delaware River in the south to the New York State border in the north.



www.TheHighlandsTrail.org



The Highlands Trail is maintained by volunteers of the New York-New Jersey Trail Conference in conjunction with multiple park partners. This map and improvements to the Trail have been made possible by the New Jersey Highlands Council. Learn more and view a detailed guide to the Highlands Trail at www.TheHighlandsTrail.org.




Highlands Council
New Jersey



The Highlands Trail continues into Pennsylvania

Map produced by the **New York-New Jersey Trail Conference**, provider of the region's best trail maps. Published maps, which show 2,000+ miles of trails in the area, are available on waterproof paper and as digital Avenza Maps app maps. Learn more at nynjtc.org.

Highlands Trail 
0 2.5 5 miles

© 2022 New York-New Jersey Trail Conference, Inc.