



Using Native Plants in the Home Landscape

The Pequest Trout Hatchery and
Natural Resource Education Center

Wednesday, April 19, 2023

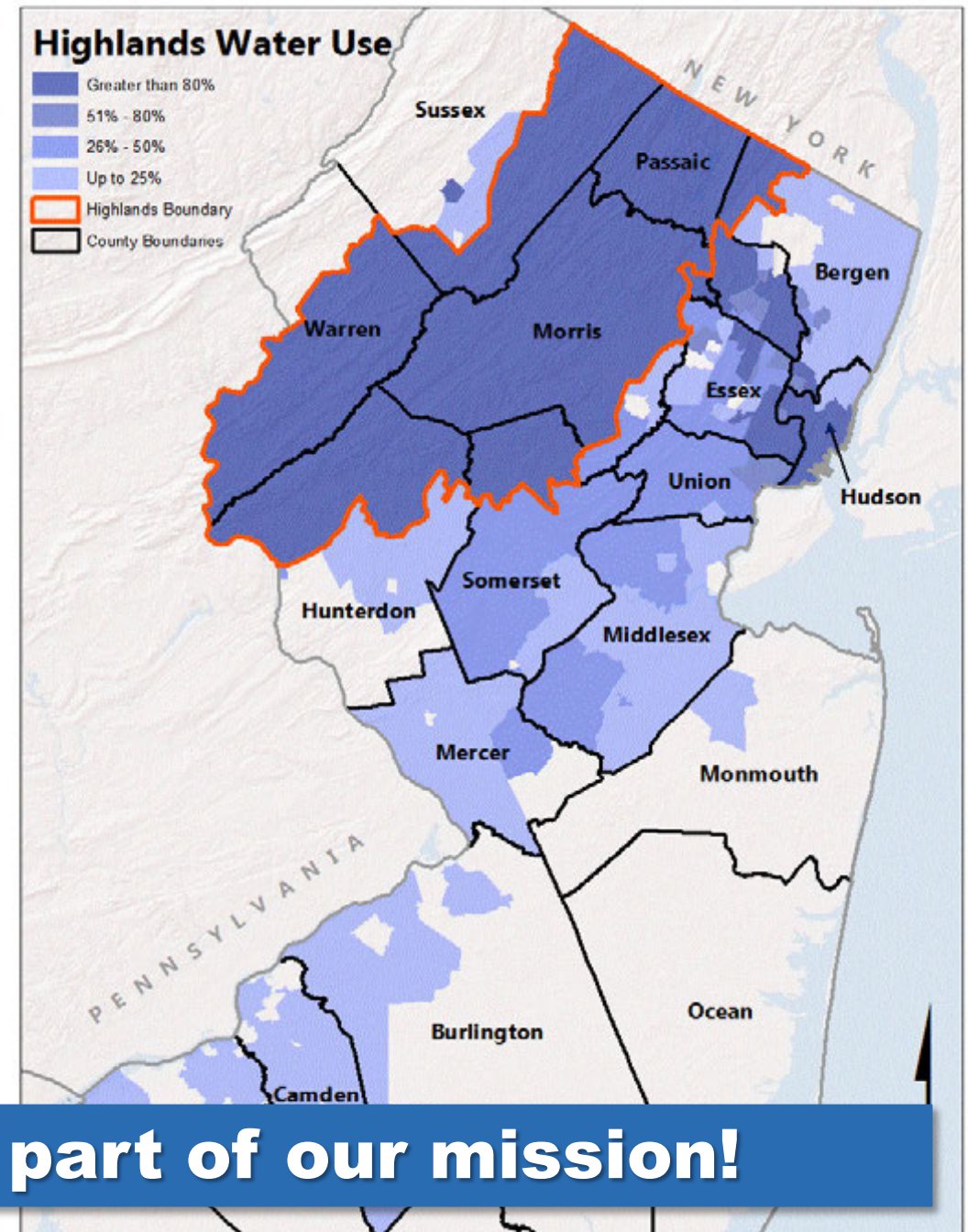


New Jersey Highlands Council

What Are We Protecting?

- Drinking Water Supply for 70%+ of NJ residents
- Important Environmental Resources
 - Forests
 - Rivers, Streams & Wetlands
 - Natural Communities
- Agricultural Lands
- Rural Communities & Landscapes

YOU are an integral part of our mission!



Agenda

- Welcome & Introduction
- Key Terms & Concepts
- Locating Your Garden
- Selecting Plants
- Planting and Maintaining





Key Terms & Concepts

Key Terms & Concepts

Ecology: Ecology is the study of the relationships between living organisms, including humans, and their physical environment; it seeks to understand the vital connections between plants and animals and the world around them.

Ecosystem: An ecosystem consists of all the organisms and the physical environment with which they interact. These biotic (living) and abiotic components (non-living) are linked together through nutrient cycles and energy flows.

Key Terms & Concepts

Phenology is the study of periodic events in biological life cycles and how these are influenced by seasonal and interannual variations in climate, as well as habitat factors.

Native and Non-native Plants

Non-native plants are released from natural controls, can interrupt the phenology of our native plants/animals.

Key Terms & Concepts

Annual
Perennial
Herbaceous
Woody plant
Forb
Graminoid
Subshrub
Shrub
Trees

Wetland Indicator Status

- Obligate
- Facultative Wetland
- Facultative
- Facultative Upland
- Upland



Locating Your Garden

What are gardening goals and considerations?

- Reduce your lawn
- Conserve Water
- Reduce fertilizers and pesticides
- Create habitat for wildlife
- Aesthetics
- Drainage issues
- Edible garden
- Deer pressure
- Budget (time and money)

Where and how big?

- Shade tracker
- Measure out the size of your garden
 - Helps you determine your budget
 - Fast vs Cheap (pots vs plugs vs seeds)
 - Create a new garden or add to an existing garden?

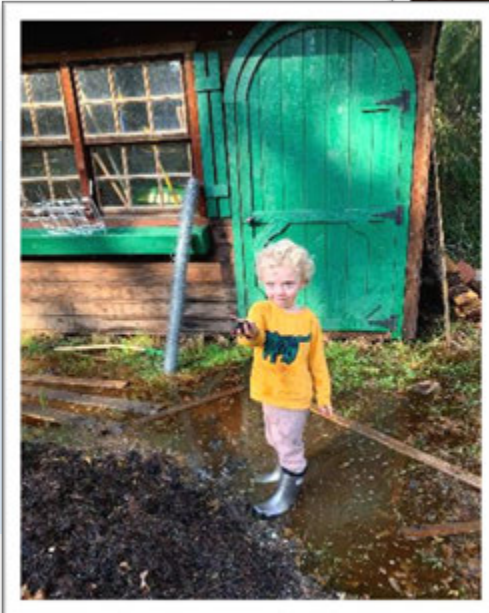
Reducing your lawn



Reducing your lawn



Dealing with drainage issues?



Soggy Spot to Peaceful Pond.



Backyard surprise turned into a garden nook



Backyard surprise turned into a garden nook



Unused spaces



Unused spaces



Just stop mowing!





Selecting Plants

Considerations for Choosing Plants

- Size of your garden/ size of your plants
- Site conditions: sunny, shady, wet, dry
- Budget



Reading Plant Labels

Common Name	Scientific Name	Duration	Growth Habit	National Wetland Indicator Status	E Wet Pl
Blue Conesn	<i>Caulophyllum thalictroides</i>	Perennial	Forb/herb		
New Jersey Tea	<i>Ceanothus americanus</i>	Perennial	Shrub, Subshrub		
Hackberry	<i>Celtis occidentalis</i>	Perennial	Tree, Shrub	FACU, FAC	
Button bush	<i>Cephalanthus occidentalis</i>	Perennial	Tree, Shrub	OBL	
Redbud	<i>Cercis canadensis</i>	Perennial	Tree, Shrub	UPL, FACU	
Partidge Pea	<i>Chamaecrista fasciculata</i>	Annual	Forb/herb		
White cedar	<i>Chamaecyparis thyoides</i>	Perennial	Tree	OBL	
Fairy Wand, Devil's Bit	<i>Chamaelirium luteum</i>	Perennial	Forb/herb	FACU-, FAC	
White Turtlehead	<i>Chelone glabra</i>	Perennial	Forb/herb	OBL	
Wintergreen	<i>Chimaphila maculata</i>	Perennial	Subshrub		
Maryland goldenaster	<i>Chrysopsis mariana</i>	Perennial	Forb/herb		
Sweet woodreed	<i>Cinna arundinacea</i>	Perennial	Graminoid	FACW, FACW+	
Field thistle	<i>Cirsium discolor</i>	Biennial, Perennia	Forb/herb		
Spring Beauty	<i>Claytonia virginica</i>	Perennial	Forb/herb	FACU-, FACU	
Virgin's Bower/Woodbine	<i>Clematis virginiana</i>	Perennial	Vine	FACU, FAC+	
Summersweet	<i>Clethra alnifolia</i>	Perennial	Shrub	FAC+, FACW	
Wild basil	<i>Clinopodium vulgare</i>	Perennial	Forb/herb		



Trees

White Oak *Quercus alba* | Blackgum *Nyssa sylvatica* | Shagbark Hickory *Carya ovata* |
Tulip Poplar *Liriodendron tulipifera* | Persimmon *Diospyros virginiana*



Shrubs

Beach Plum *Prunus maritima* | Spicebush *Lindera benzoin* | Blackhaw Viburnum *Viburnum prunifolium* | Mountain Laurel *Kalmia latifolia* | Winterberry Holly *Ilex verticillata*



Native Food Plants

Blueberries *Vaccinium corymbosum* | Pawpaws *Asimina triloba* | Hazelnuts *Corylus americana*
| Beach plum/Native plum *Prunus maritima*/*Prunus americana* | Black Raspberries *Rubus occidentalis* | Wild Strawberries *Fragaria virginiana* | Ramps *Allium tricoccum*



Herbaceous: Spring Ephemerals

Dutchman's Breeches *Dicentra cucullaria* | Jacob's ladder *Polemonium reptans* | Rue
anemone *Thalictrum thalictroides* | Shooting Star *Dodecatheon meadia*



Herbaceous: Shady Plants

Foamflower *Tiarella cordifolia* | Golden ragwort *Packera aurea* | Golden Alexander *Zizia aurea* | Cardinal Flower *Lobelia cardinalis* | Black Cohosh *Actaea racemosa*



Herbaceous: Sun Lovers

Scarlet Beebalm *Monarda didyma* | Blazing star *Liastris spicata* | Orange milkweed *Asclepias tuberosa* | Obedient plant *Physostegia virginiana* | Wild Bergamot *Monarda fistulosa*



Herbaceous: Wet areas

Blue flag iris *Iris versicolor* | Swamp Milkweed *Asclepias incarnata* | Hop sedge *Carex lupulina* |
Common rush *Juncus effusus*



Herbaceous: Late Bloomers

New York Ironweed *Vernonia noveboracensi* |

New England Aster *Symphyotrichum novae-angliae* | Gray Goldenrod *Solidago nemoralis*



Vines, Groundcovers and Grasses

Coral Honeysuckle *Lonicera sempervirens* | Creeping Phlox *Phlox stolonifera* | American wisteria *Wisteria frutescens* | Purple Love Grass *Eragrostis spectabilis* | Big blue stem *Andropogon gerardii*





Planting & Maintaining

Planning

- When do you have time to start your garden?
- How to prepare your site?



Planting

- Digging hole
- Loosening plant from its pot
- Loosen up the roots
- Check your depth
- Pack it in



Maintaining

- Watering
- Weeding
- Be lazy



Native Plant Resources

Websites

Native Plant Society of New Jersey npsnj.org

USDA Plant database Website plants.usda.gov/home

Jersey Friendly Yards: www.jerseyyards.org

New Jersey Agricultural Experiment Station njaes.rutgers.edu/fs1140/

Lady Bird Johnson Wildflower Center www.wildflower.org

Bowmans Hill Wildflower Preserve bhwp.org

Mount Cuba Center mtcubacenter.org

Podcasts

Native Plants, Healthy Planet

In Defense of Plants

Questions?



Thank you!



Carolyn Klaube

Senior Natural Resources Management Specialist
Carolyn.Klaube@highlands.nj.gov