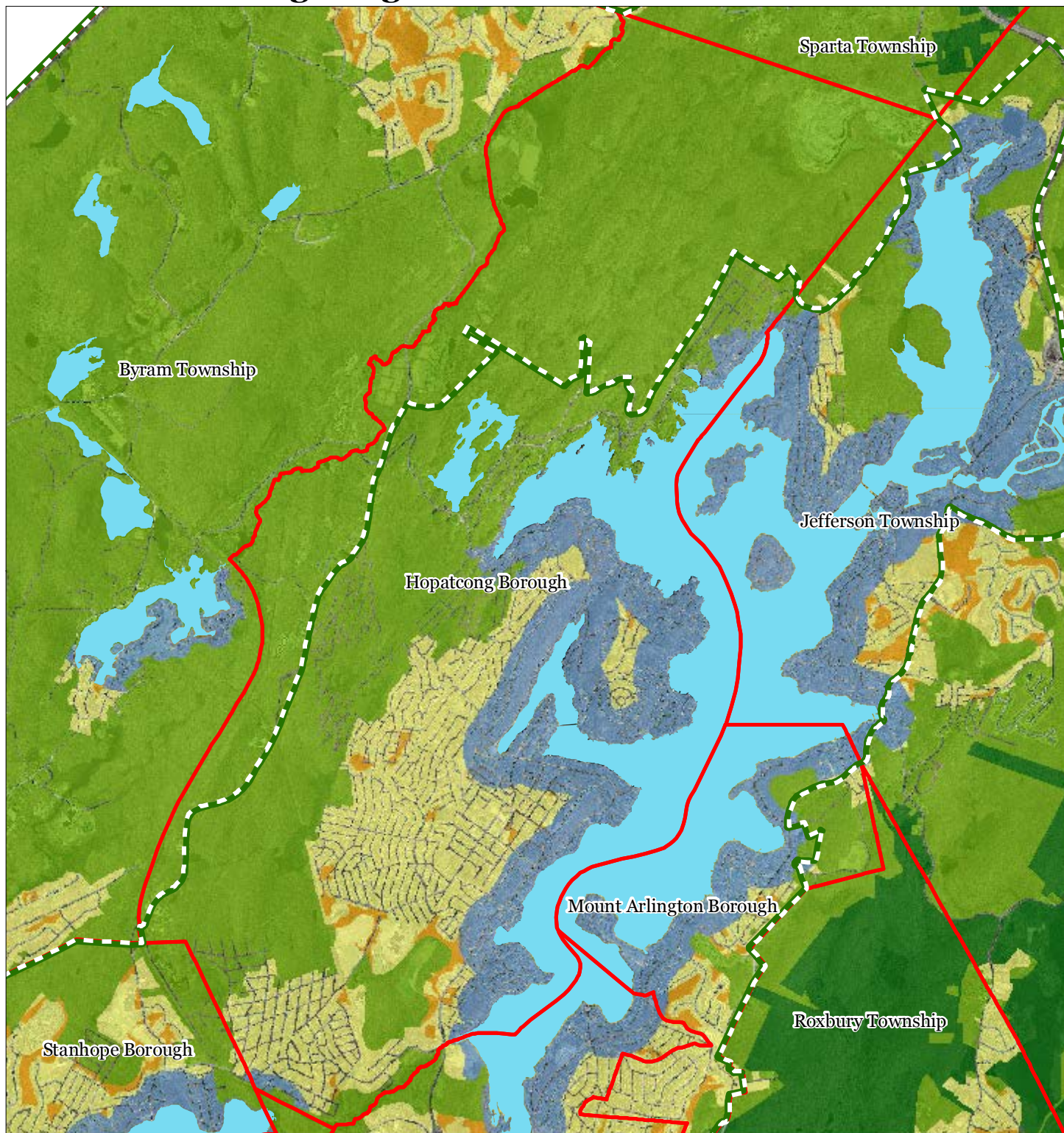


Exhibit A: Borough Highlands Area



Regional Master Plan Overlay Zone Designation

Zone

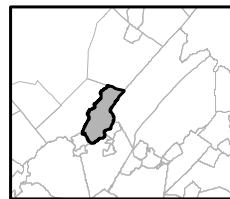
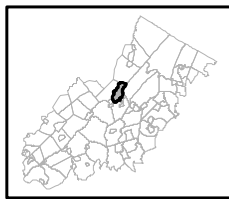
- Protection
- Conservation
- Existing Community

- Lakes Greater Than 10 acres
- Preservation Area
- Municipal Boundaries

Sub-Zone

- Existing Community Environmentally Constrained
- Conservation Environmentally Constrained
- Lake Community
- Wildlife Management

Hopatcong Borough

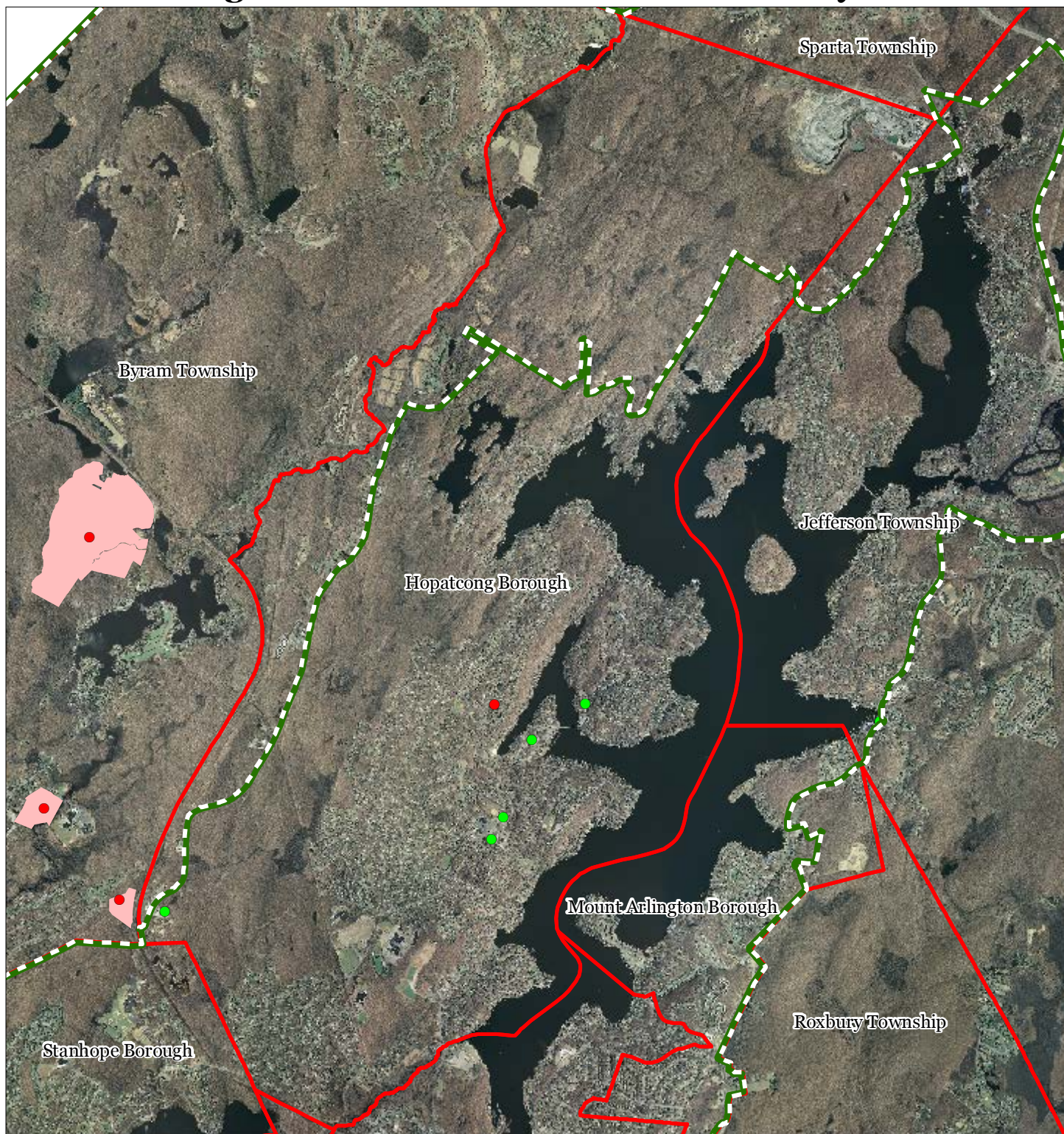


1 inch = 0.72 miles



August 2012

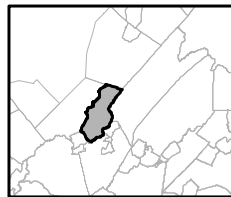
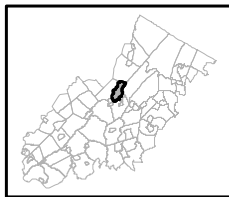
Exhibit C: Highlands Contaminated Site Inventory



Highlands Contaminated Site Inventory

Hopatcong Borough

- Tier 1 Sites
- Tier 1 Sites (Polygons)
- Tier 2 Sites
- ▬ Preservation Area
- ▬ Municipal Boundaries

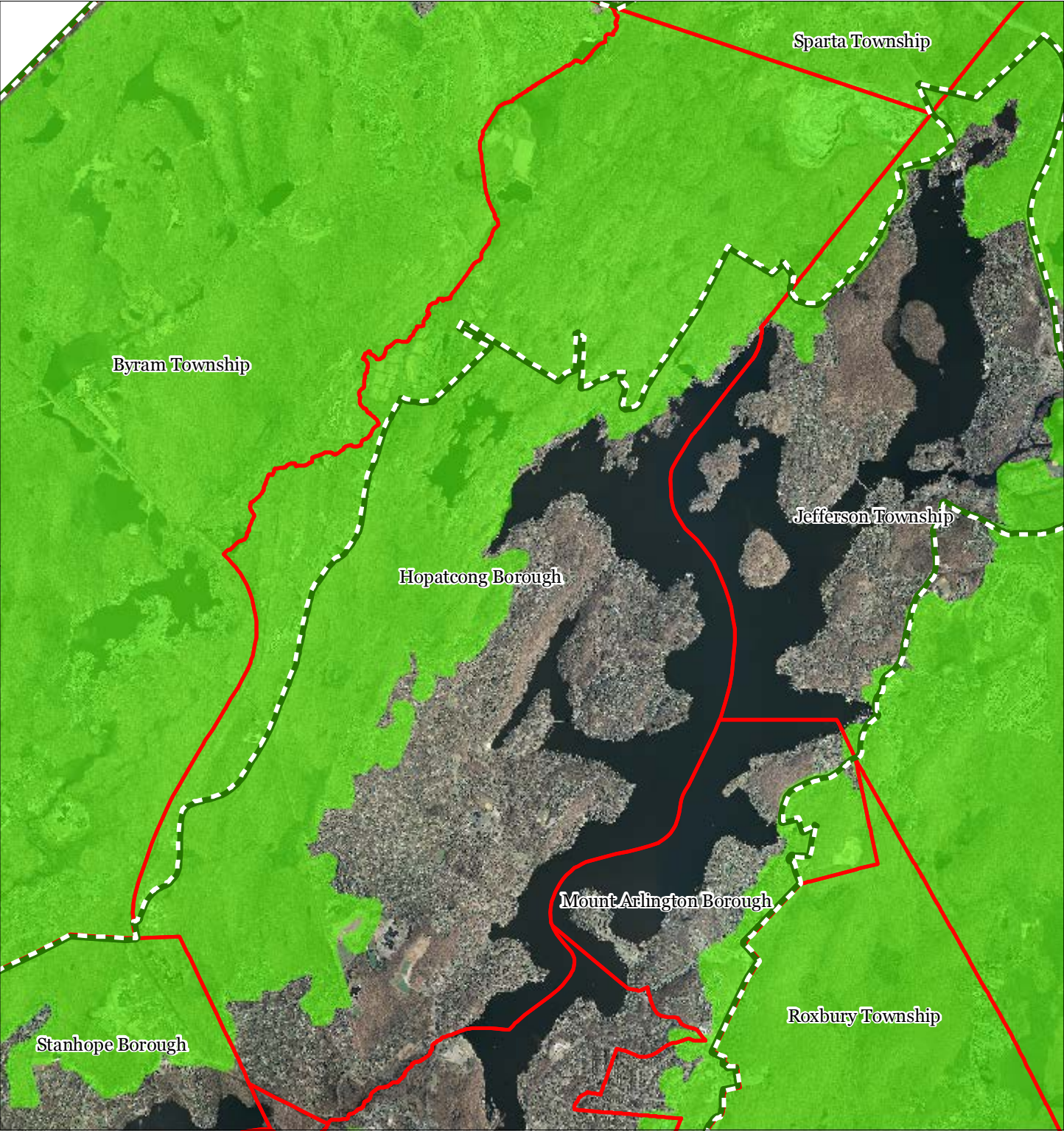





1 inch = 0.72 miles



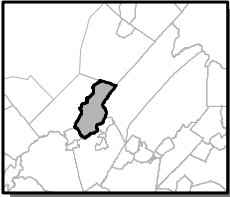
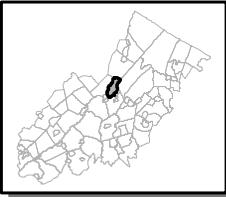
August 2012

Exhibit E: Forest Resource Area



-  Forest Resource Area
-  Preservation Area
-  Municipal Boundaries

Hopatcong Borough






1 inch = 0.72 miles

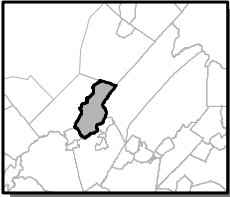
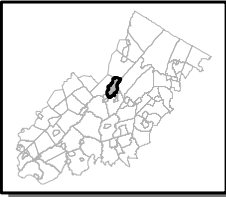


Exhibit F: Total Forest Area



-  Forested Areas
-  Preservation Area
-  Municipal Boundaries

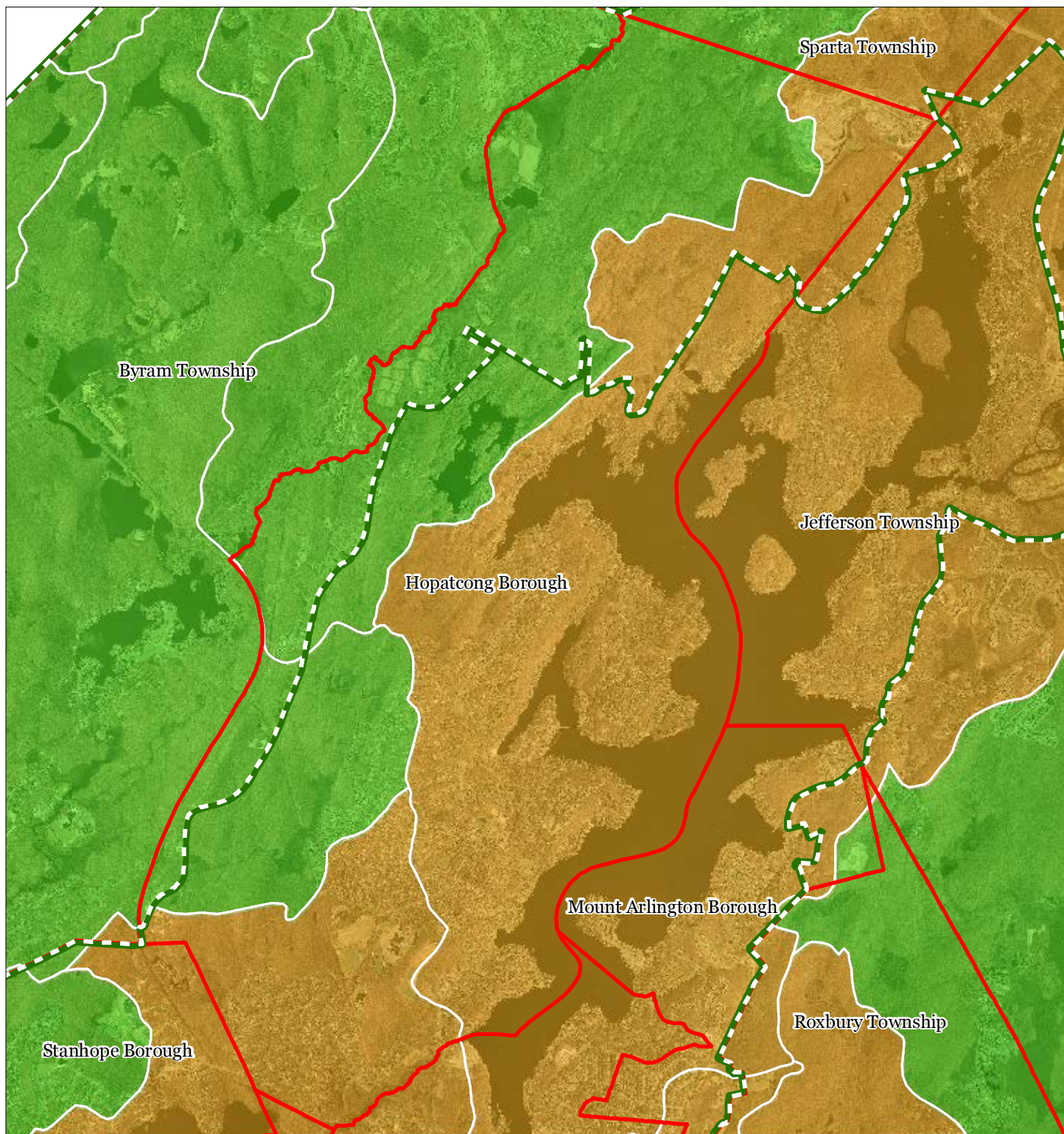
Hopatcong Borough



1 inch = 0.72 miles



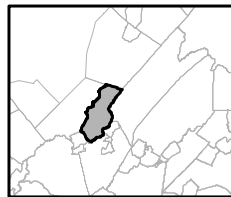
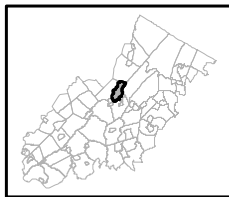
Exhibit G: Forest Subwatersheds



Forest Integrity by HUC14 Subwatershed

- Low*
- Moderate*
- High*
- Preservation Area
- Municipal Boundaries

Hopatcong Borough

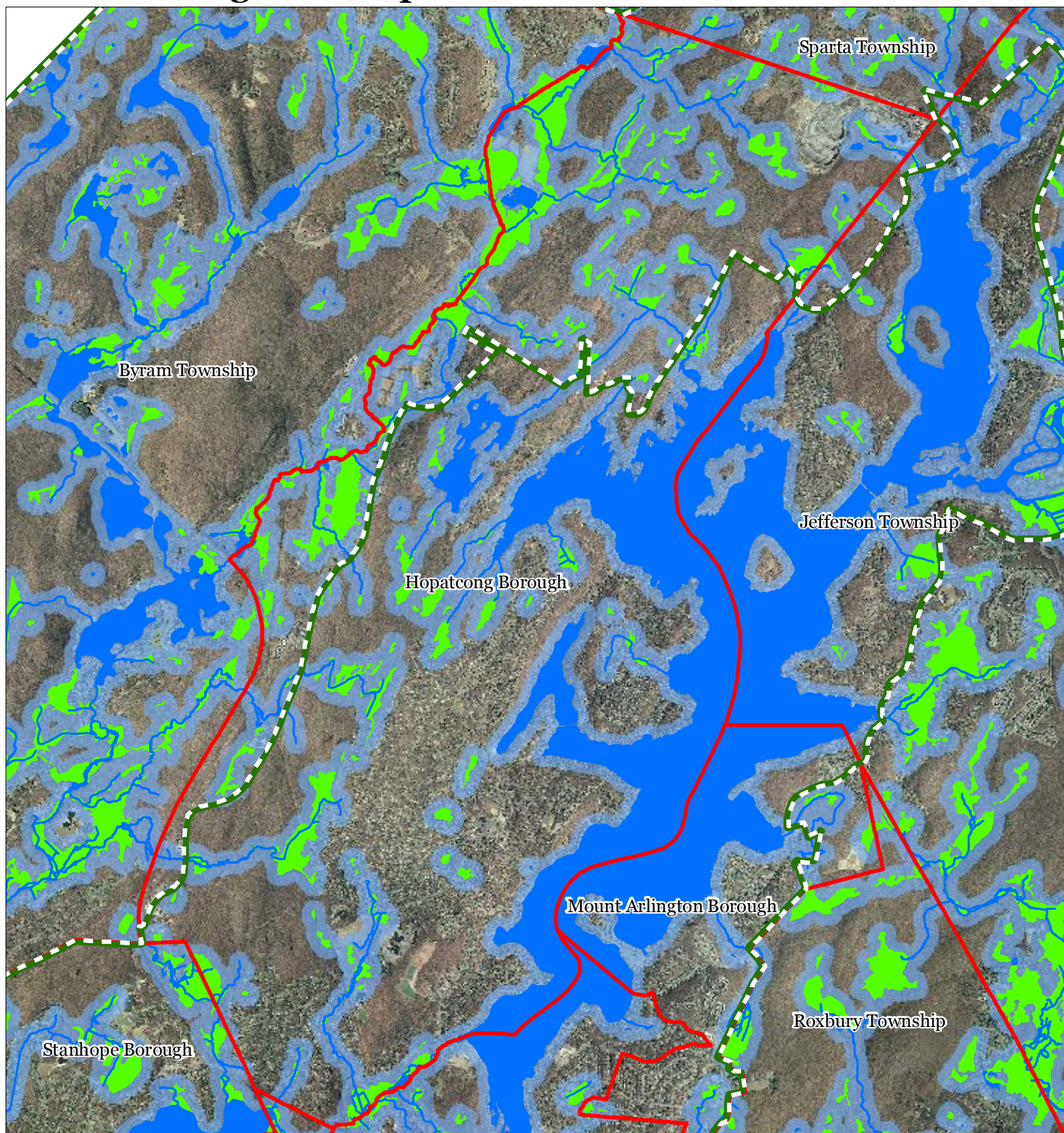


1 inch = 0.72 miles



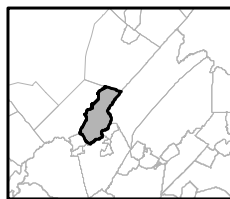
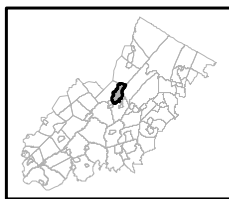
August 2012

Exhibit H: Highlands Open Waters



-  Highlands Open Water Buffers (300ft)
-  Streams
-  Wetlands
-  Lakes & Ponds
-  Preservation Area
-  Municipal Boundaries

Hopatcong Borough

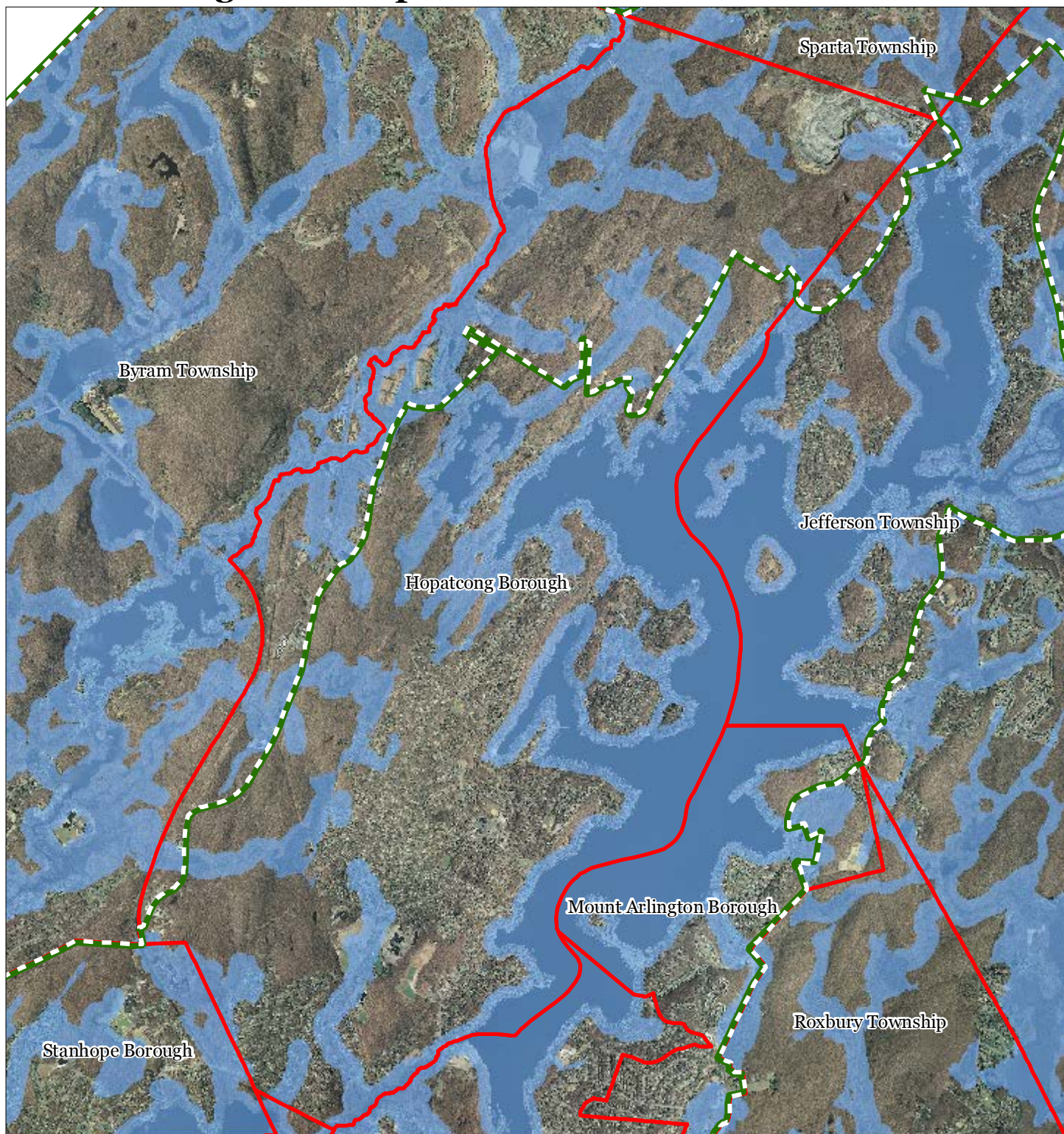


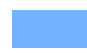


1 inch = 0.72 miles



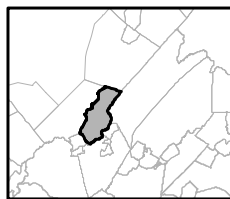
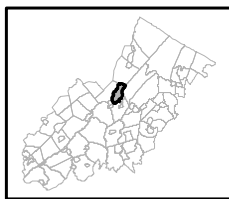
August 2012

Exhibit I: Highlands Riparian Areas



-  Riparian Area
-  Preservation Area
-  Municipal Boundaries

Hopatcong Borough

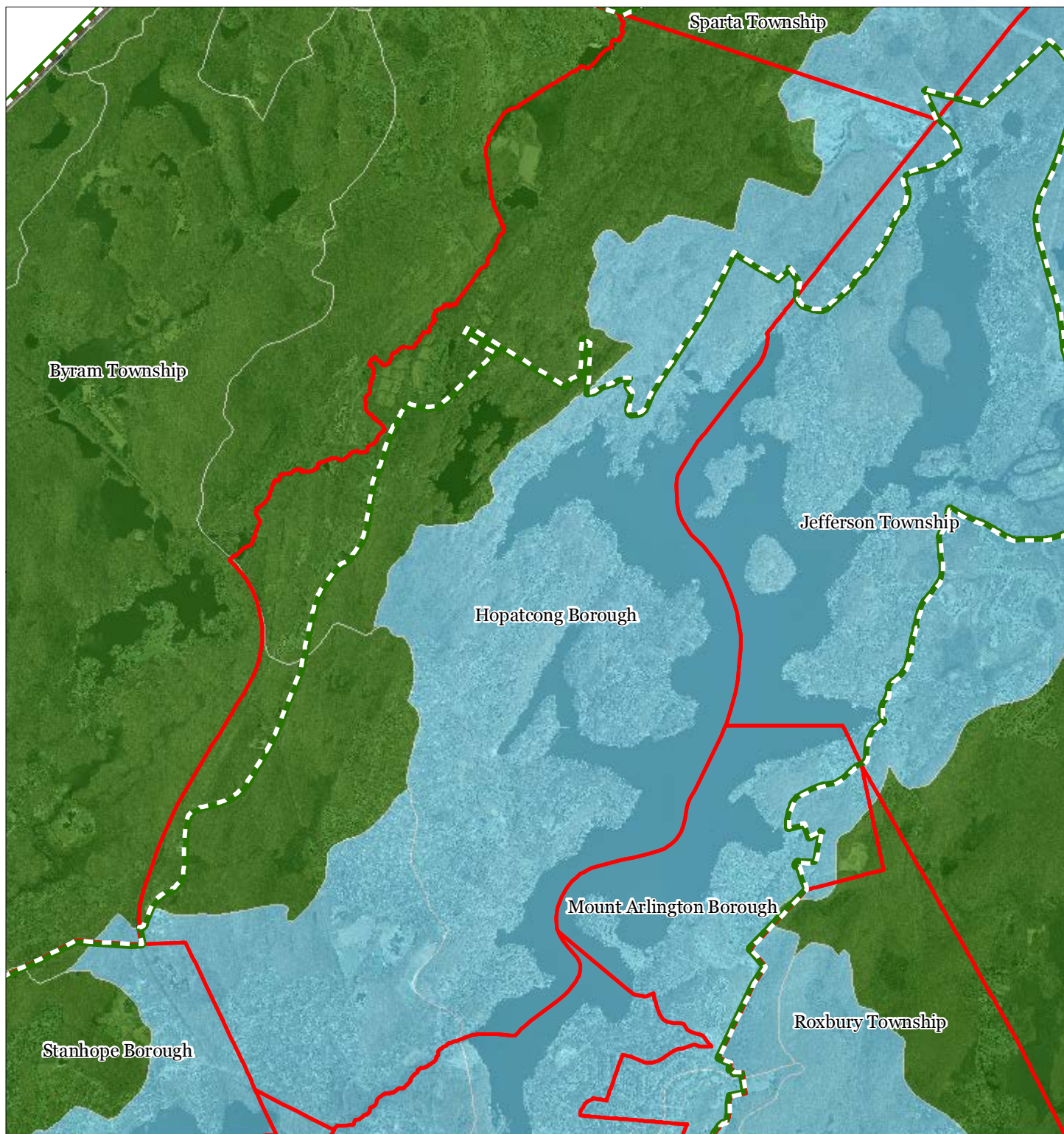


1 inch = 0.72 miles



August 2012

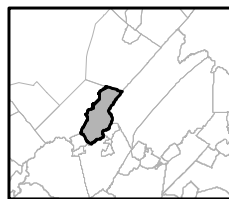
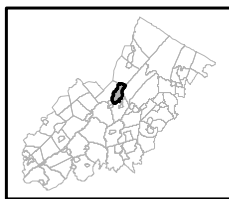
Exhibit J: Watershed Values



Watershed Values by HUC14 Subwatershed

- Low
- Moderate
- High
- Preservation Area
- Municipal Boundaries

Hopatcong Borough

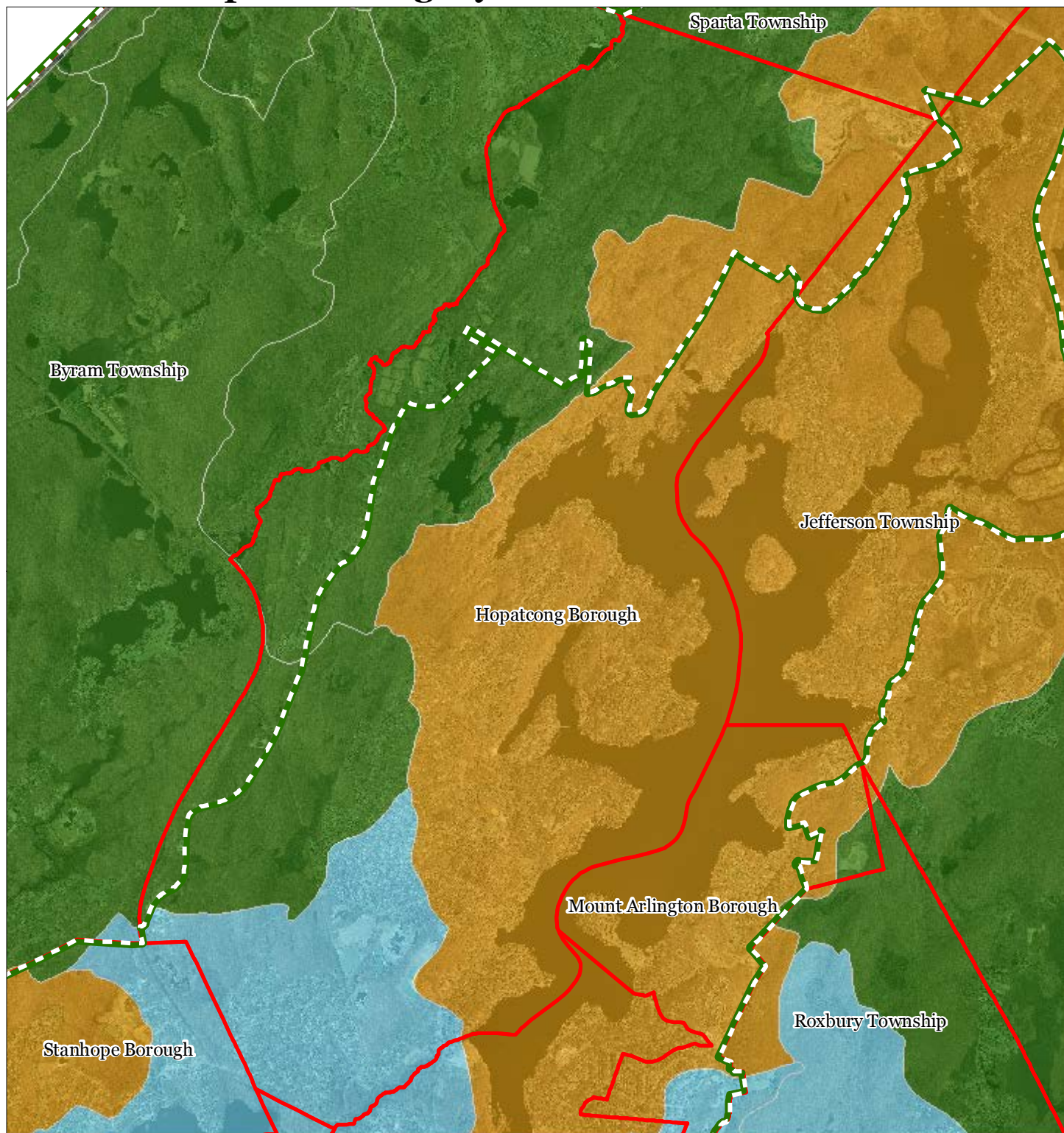


1 inch = 0.72 miles








August 2012

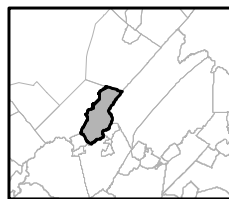
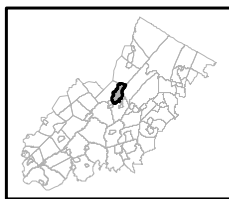
Exhibit K: Riparian Integrity



Riparian Integrity by HUC14 Subwatershed

-  Low
-  Moderate
-  High
-  Preservation Area
-  Municipal Boundaries

Hopatcong Borough

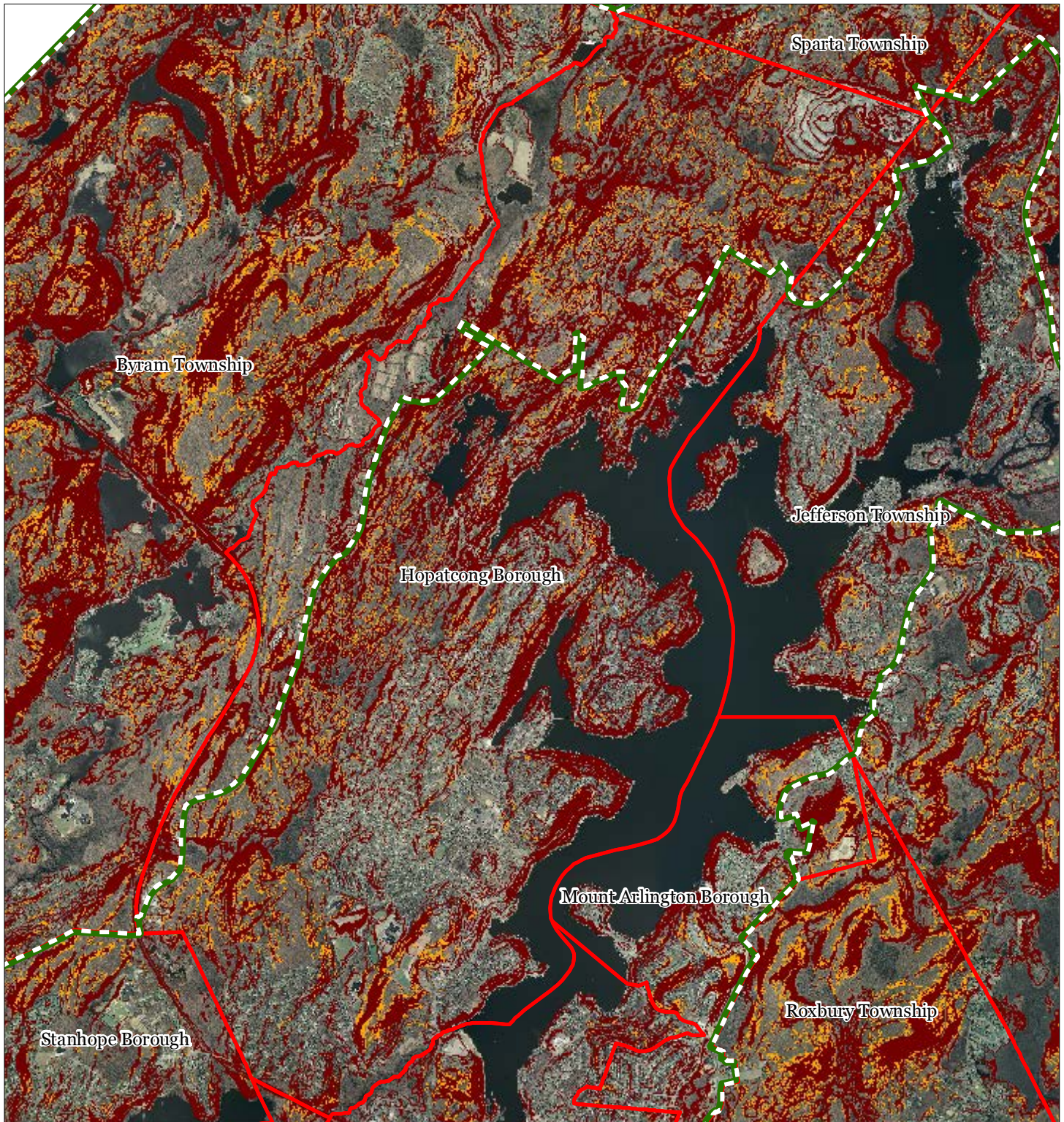


1 inch = 0.72 miles







August 2012

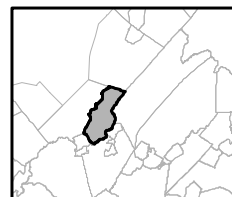
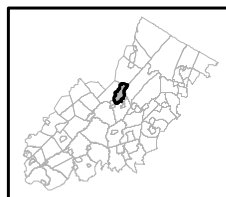
Exhibit L: Steep Slope Protection Areas



Steep Slopes

-  Moderate
-  Severe
-  Preservation Area
-  Municipal Boundaries

Hopatcong Borough

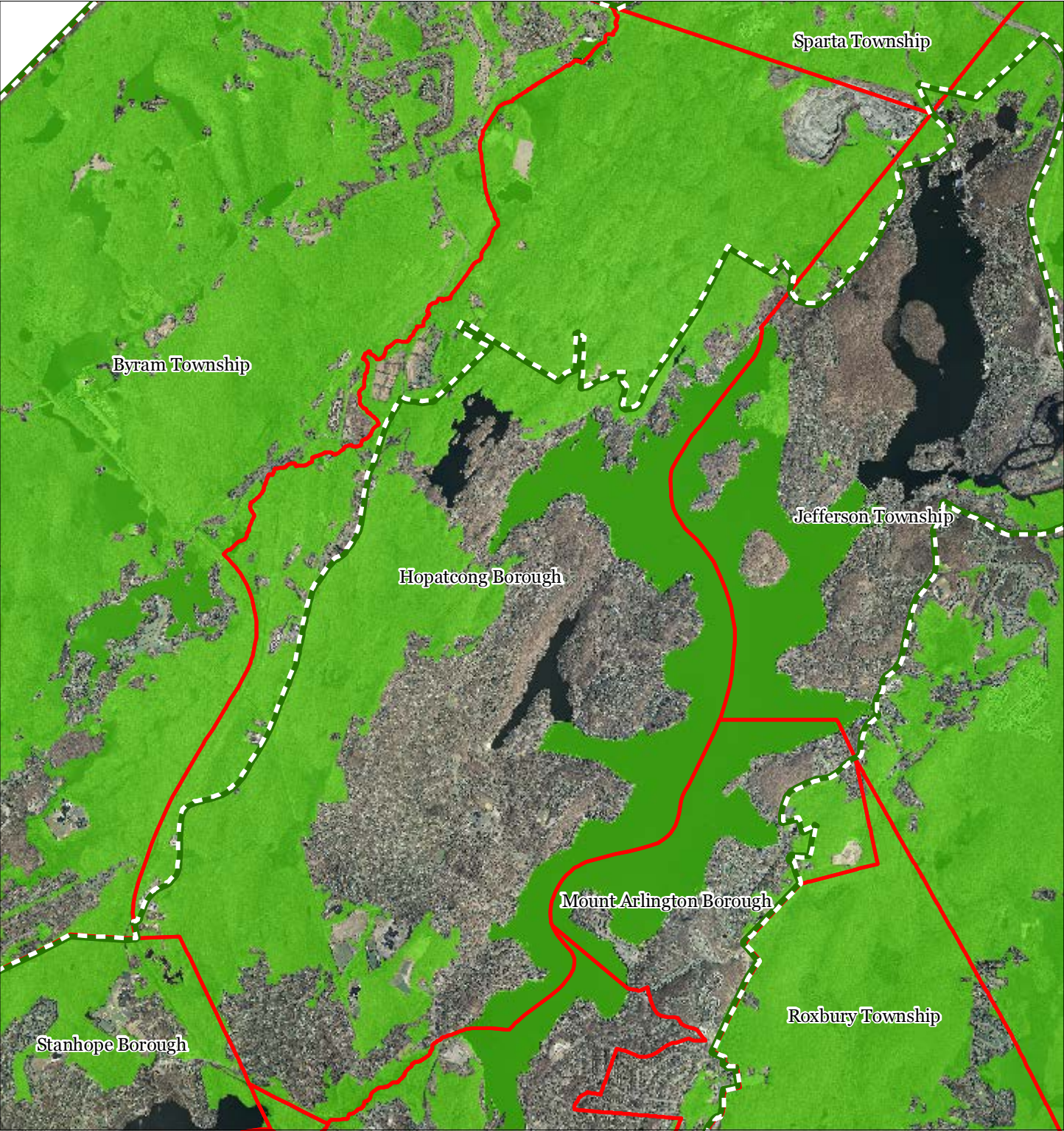





1 inch = 0.72 miles



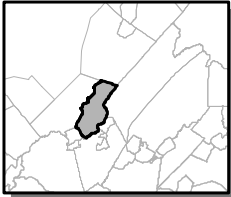
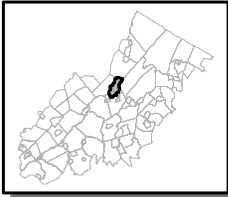
August 2012

Exhibit M: Critical Wildlife Habitat



-  Critical Wildlife Habitat
-  Preservation Area
-  Municipal Boundaries

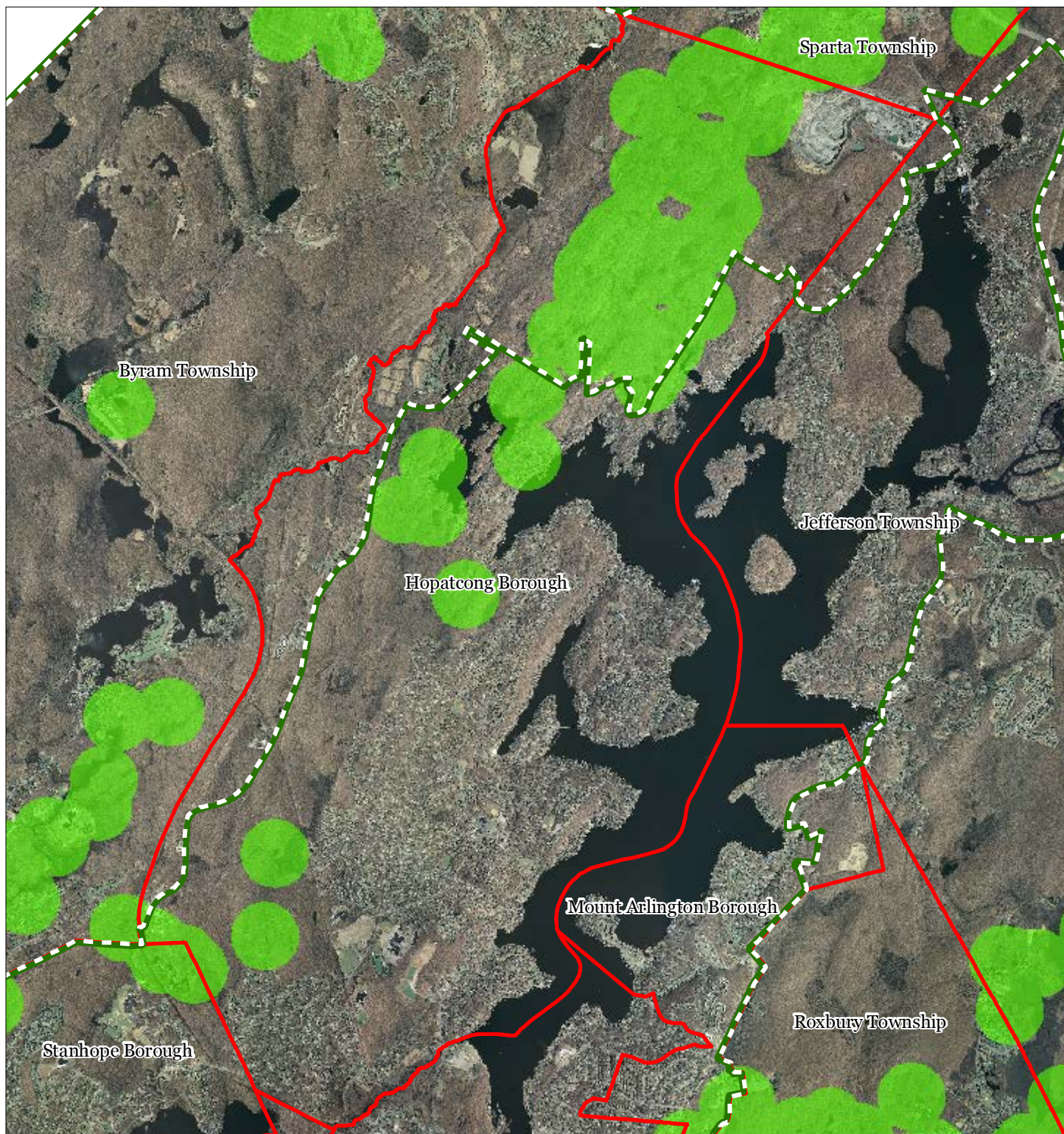
Hopatcong Borough






1 inch = 0.72 miles

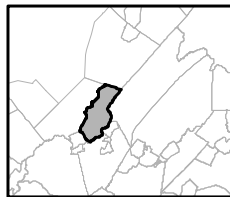
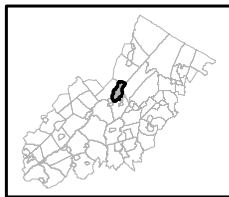


Exhibit O: Vernal Pools



-  Vernal Pools + 1000ft Buffer
-  Preservation Area
-  Municipal Boundaries

Hopatcong Borough

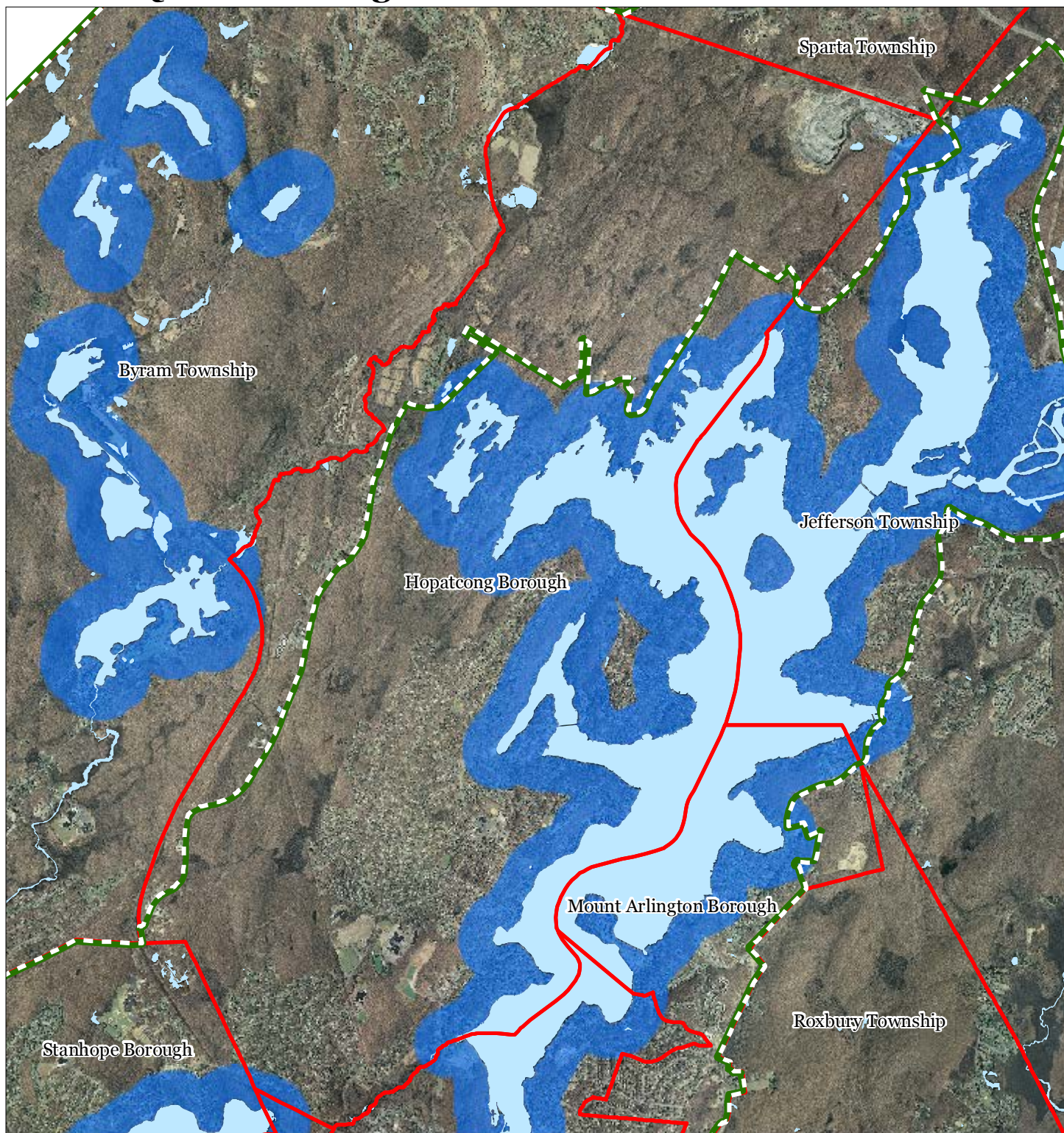


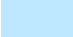



1 inch = 0.72 miles



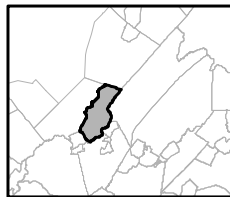
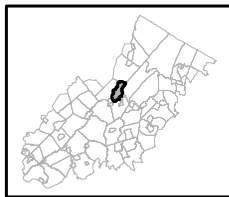
August 2012

Exhibit Q: Lake Management Area



-  Lakes & Ponds
-  Lake Management Area
-  Preservation Area
-  Municipal Boundaries

Hopatcong Borough

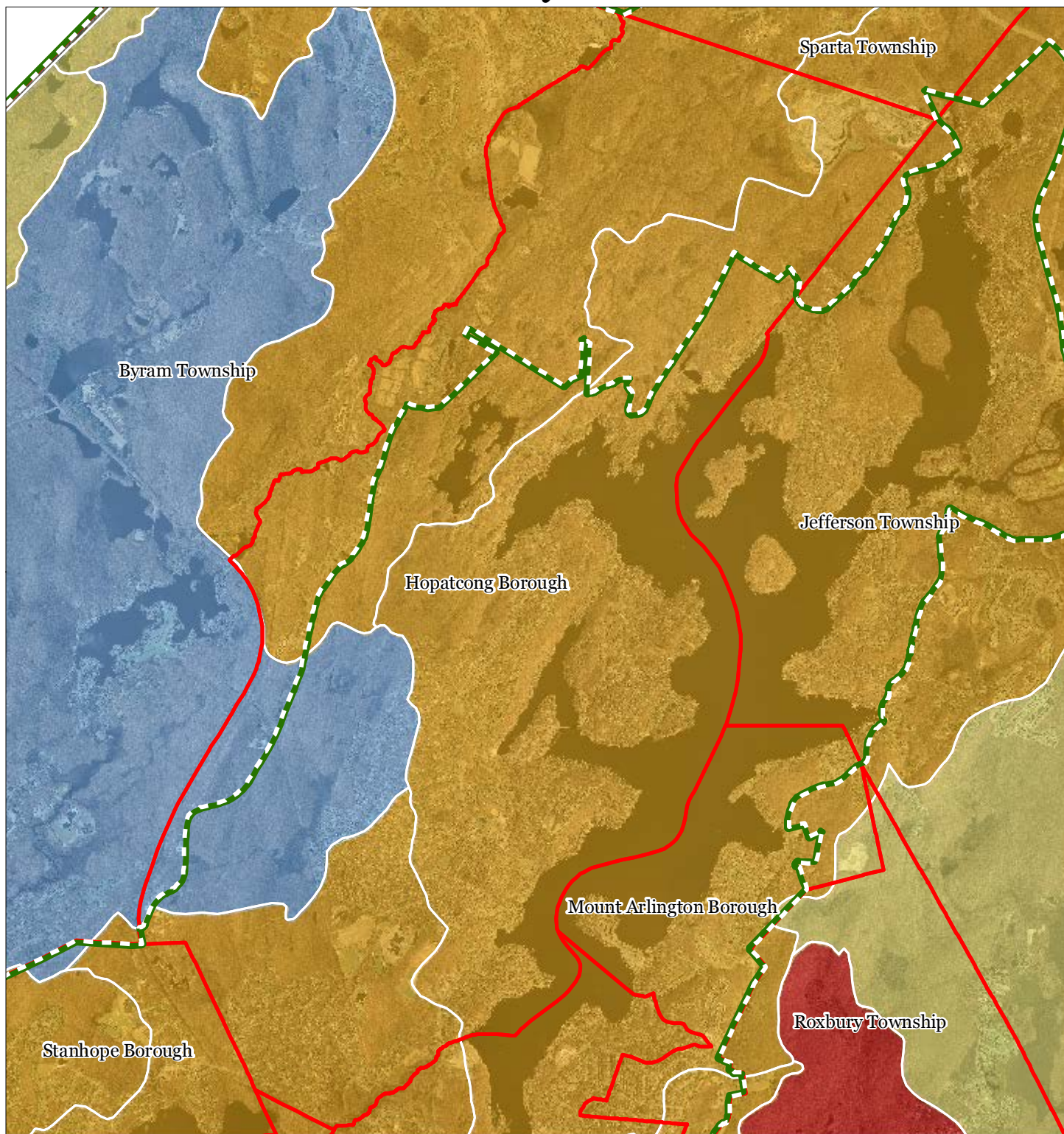


1 inch = 0.72 miles



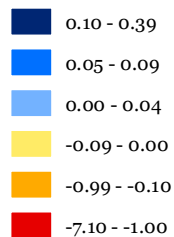
August 2012



Exhibit R: Net Water Availability



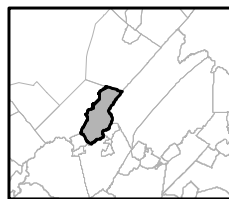
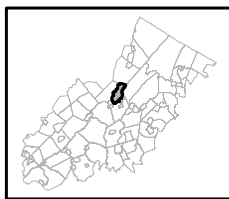
Net Water Availability By HUC14

Million Gallons Per Day (MGD)



 Preservation Area
 Municipal Boundaries

Hopatcong Borough

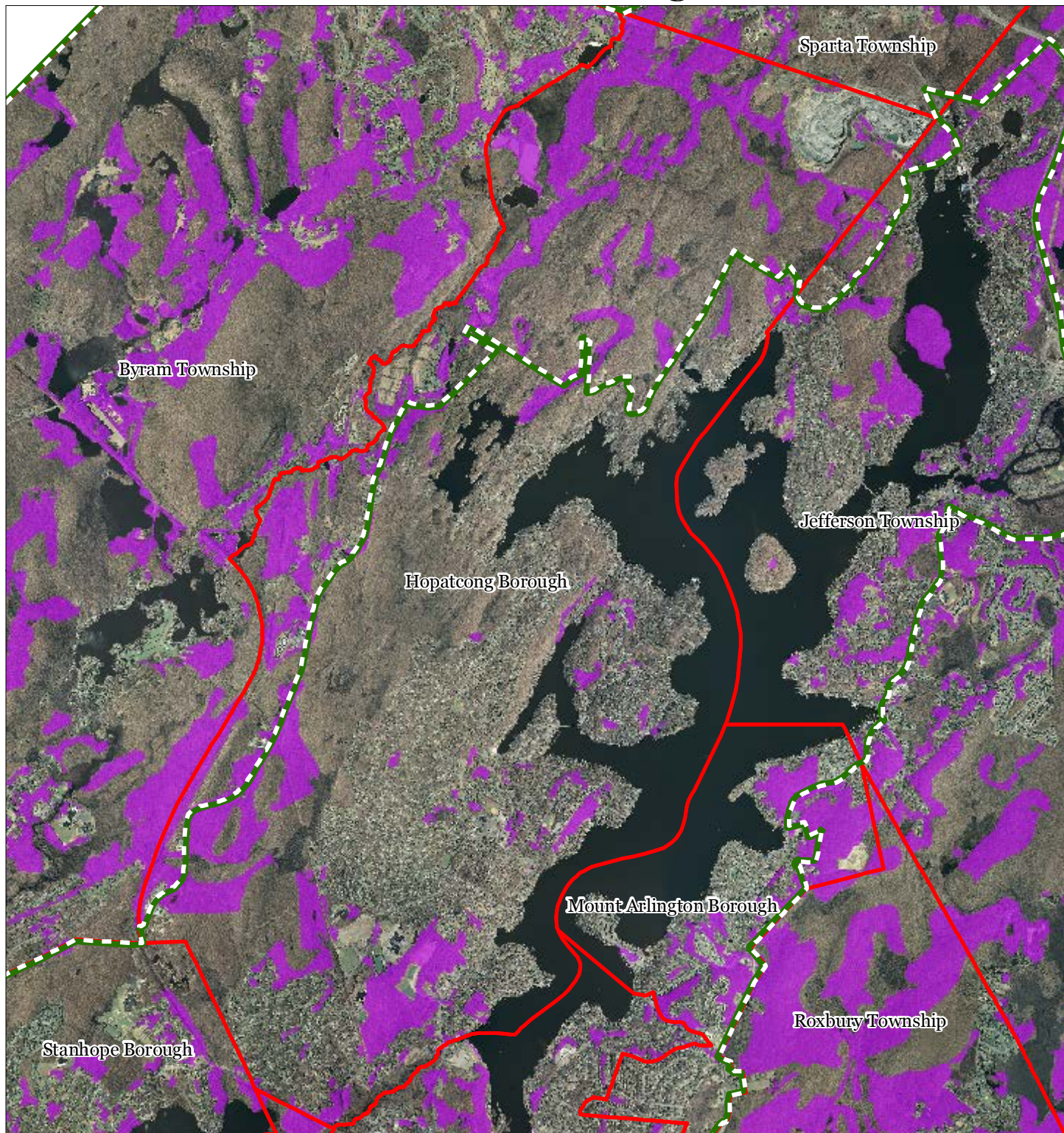





1 inch = 0.72 miles


Highlands Council
New Jersey

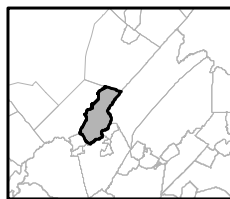
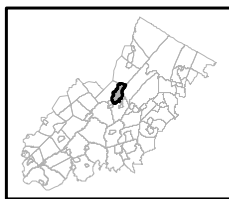
August 2012

Exhibit S: Prime Ground Water Recharge Areas



-  Prime Ground Water Recharge Areas
-  Preservation Area
-  Municipal Boundaries

Hopatcong Borough

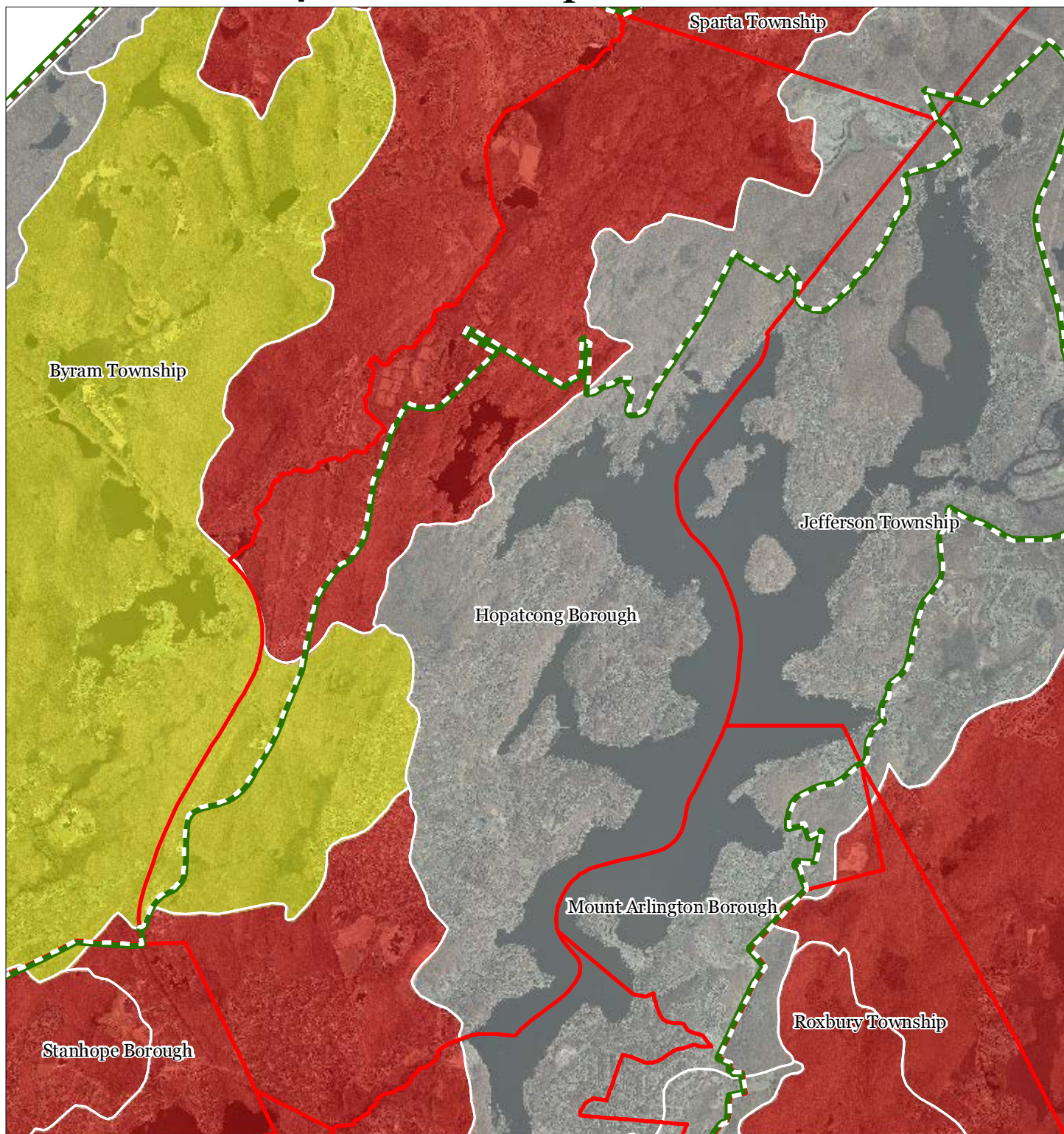


1 inch = 0.72 miles



August 2012

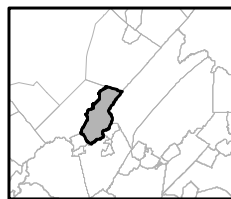
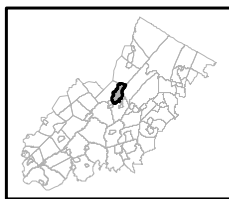
Exhibit T: HUC 14s on NJDEP Impaired Waters List



Impaired Waters Overall Assessment by HUC14 Subwatershed

- Non Impacted
- Insufficient Data Available
- Moderate
- Water Quality Impaired
- Preservation Area
- Municipal Boundaries

Hopatcong Borough

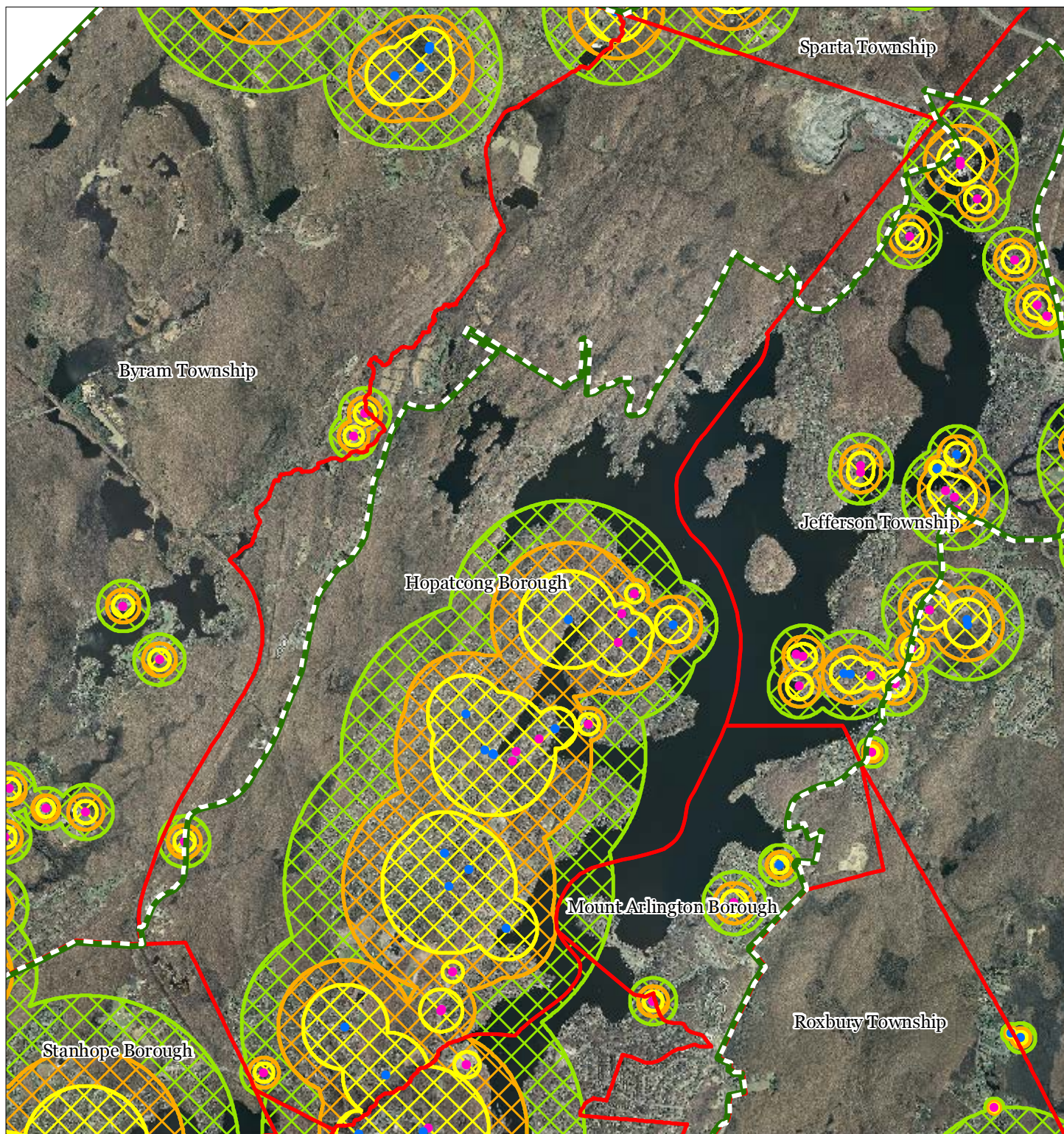


1 inch = 0.72 miles



August 2012

Exhibit U: Wellhead Protection Areas



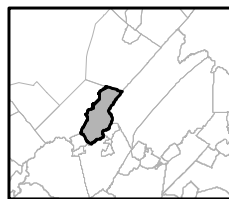
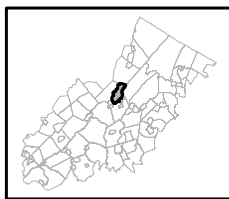
- Public Community Wells
- Public Non-Community Wells

Wellhead Protection Areas

- 2-Year Tier
- 5-Year Tier
- 12-Year Tier

- Preservation Area
- Municipal Boundaries

Hopatcong Borough

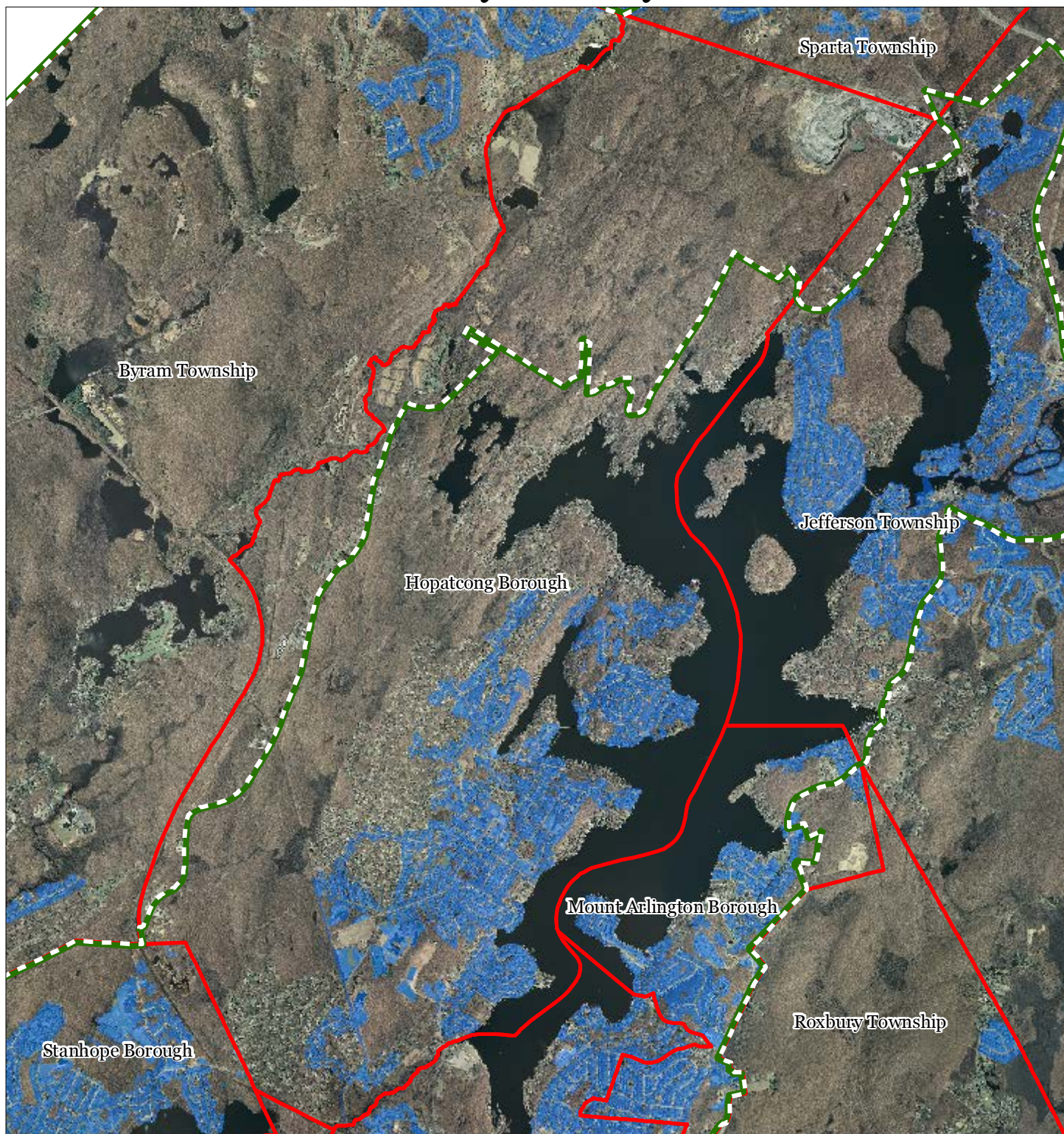





1 inch = 0.72 miles



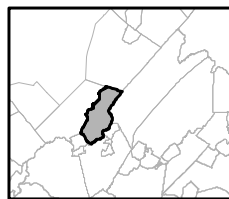
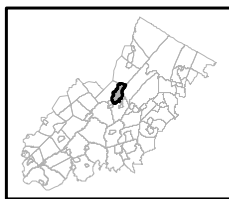
August 2012

Exhibit V: Public Community Water Systems



-  Public Community Water Systems
-  Preservation Area
-  Municipal Boundaries

Hopatcong Borough

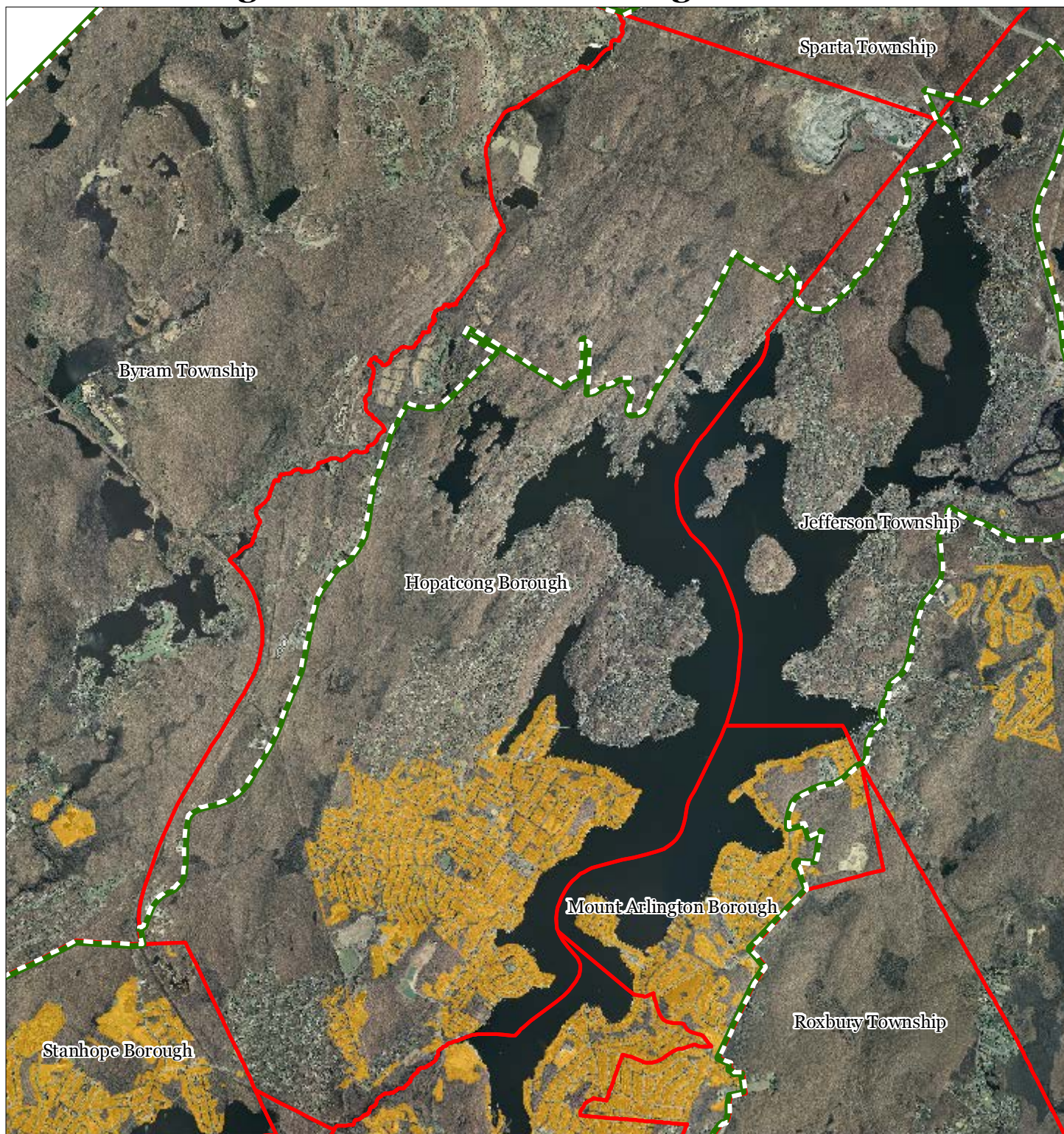


1 inch = 0.72 miles






August 2012

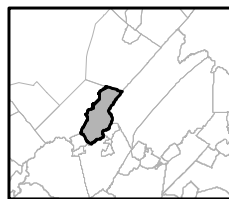
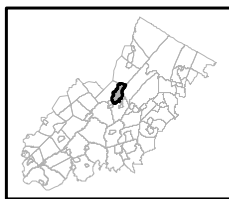
Exhibit W: Highlands Domestic Sewerage Facilities



Highlands Domestic Sewerage Facilities

-  Existing Area Served
-  Preservation Area
-  Municipal Boundaries

Hopatcong Borough



1 inch = 0.72 miles



August 2012

Exhibit Y: Highlands Roadway Network



Roadway Network


— Interstate Highways


— U.S. Routes

— State Routes

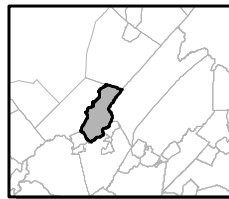
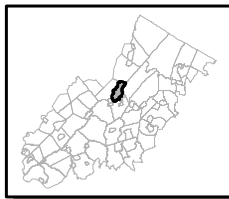
— County Routes

— Local Routes

 Preservation Area

 Municipal Boundaries

Hopatcong Borough



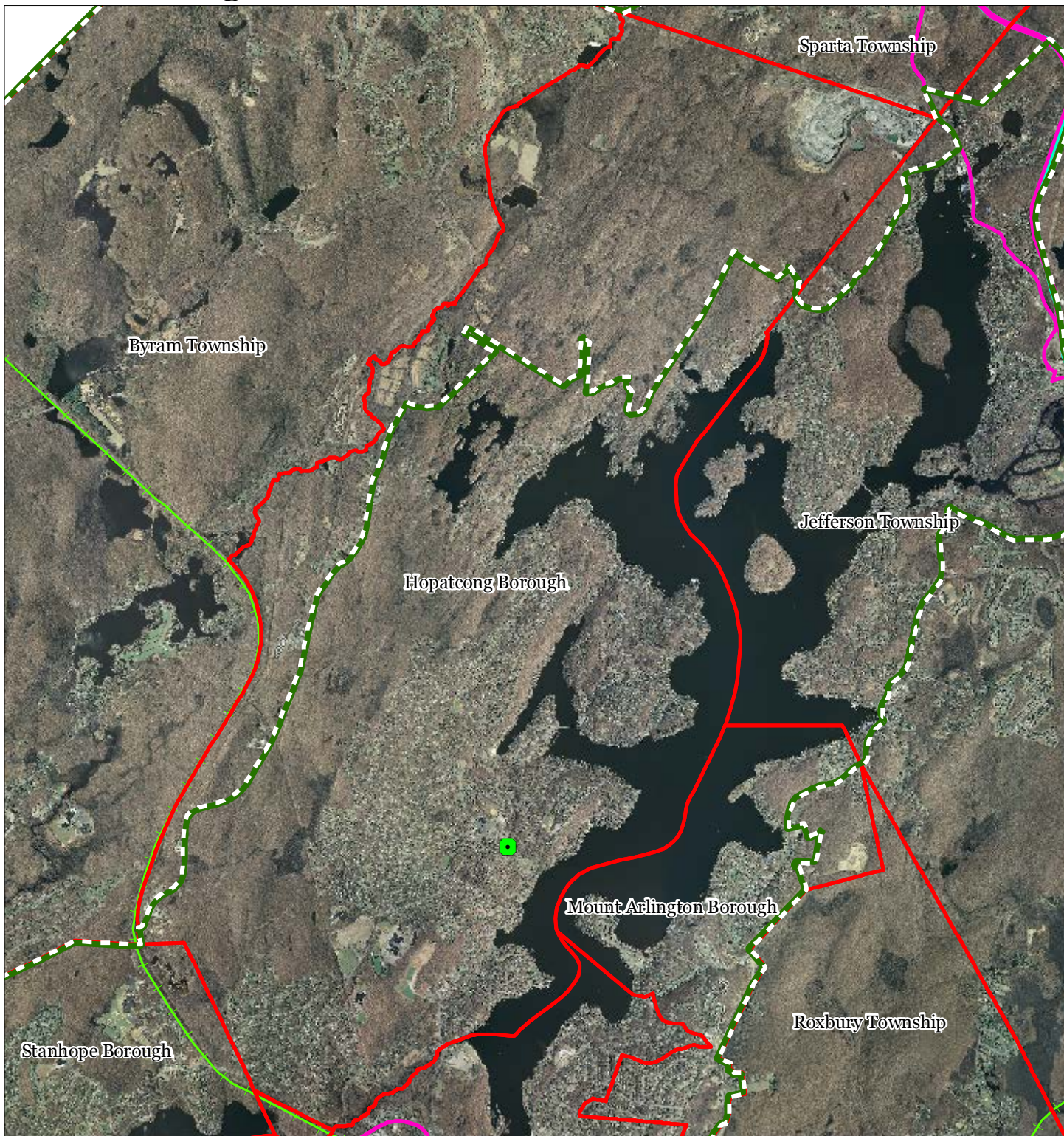
1 inch = 0.72 miles


Highlands Council
New Jersey



August 2012

Exhibit Z: Highlands Transit Network



Rail Network

Boonton Line

Main Line & Bergen County Line

Morris and Essex Line

Raritan Valley Line

Freight Rail Lines

Freight Rail Lines

Abandoned Freight Rail

Rail Stations

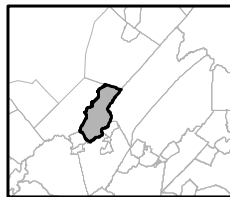
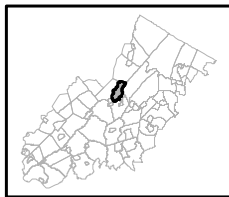
Park and Ride Sites

Private Bus Lines

NJ Transit Bus Lines

Airports

Hopatcong Borough

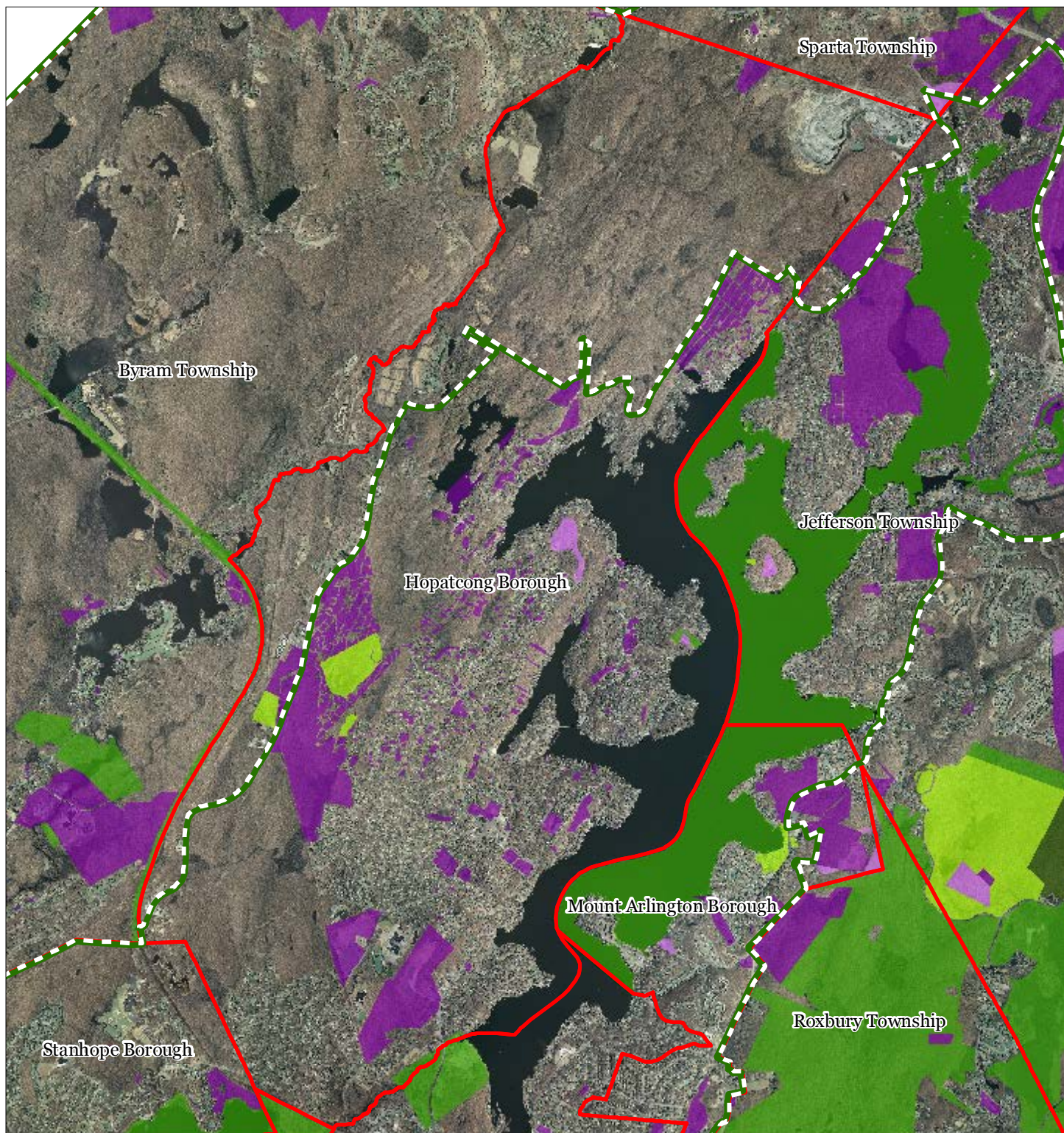


1 inch = 0.72 miles



August 2012

Exhibit AA: Preserved Lands



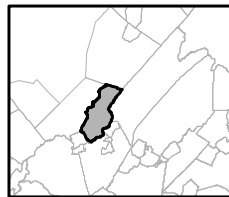
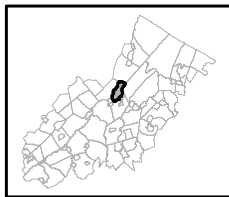
Preserved Lands

- Federal Open Space
- State Open Space
- County Open Space
- Municipal Open Space
- Non-Profit/Private Open Space
- Water Supply Watershed Lands
- Preserved Farmland
- Highlands Transfer of Development Lands

Conservation Easements

- Green Acres
- SADC Easements**
- SADC Final
- SADC Preserved
- Municipal Boundaries
- Preservation Area

Hopatcong Borough

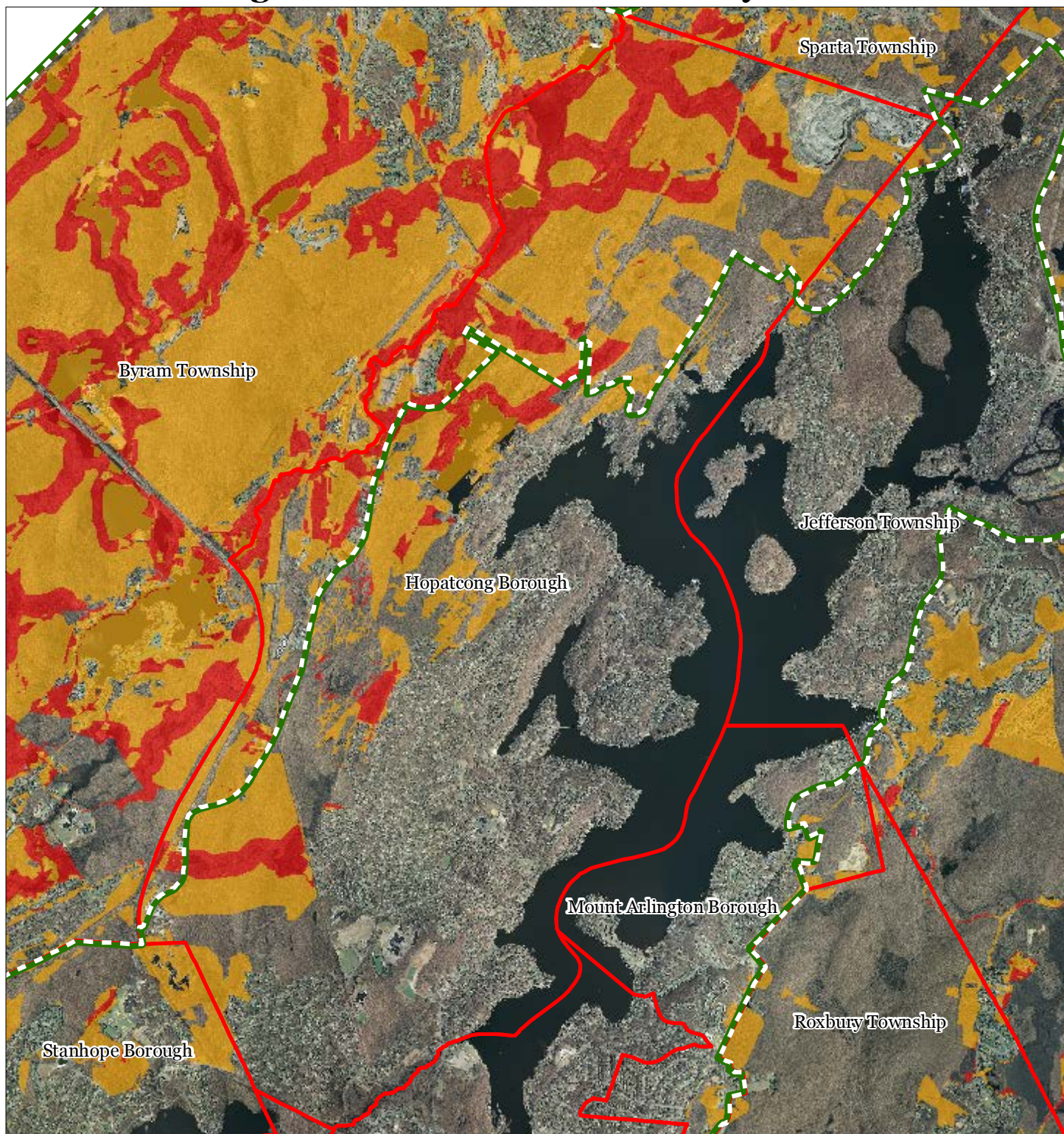


1 inch = 0.72 miles



August 2012

Exhibit BB: Highlands Conservation Priority Areas



Conservation Priority Area

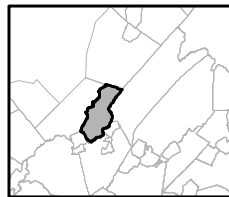
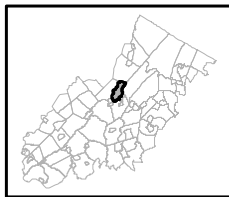
 Moderate

 High

 Preservation Area

 Municipal Boundaries

Hopatcong Borough



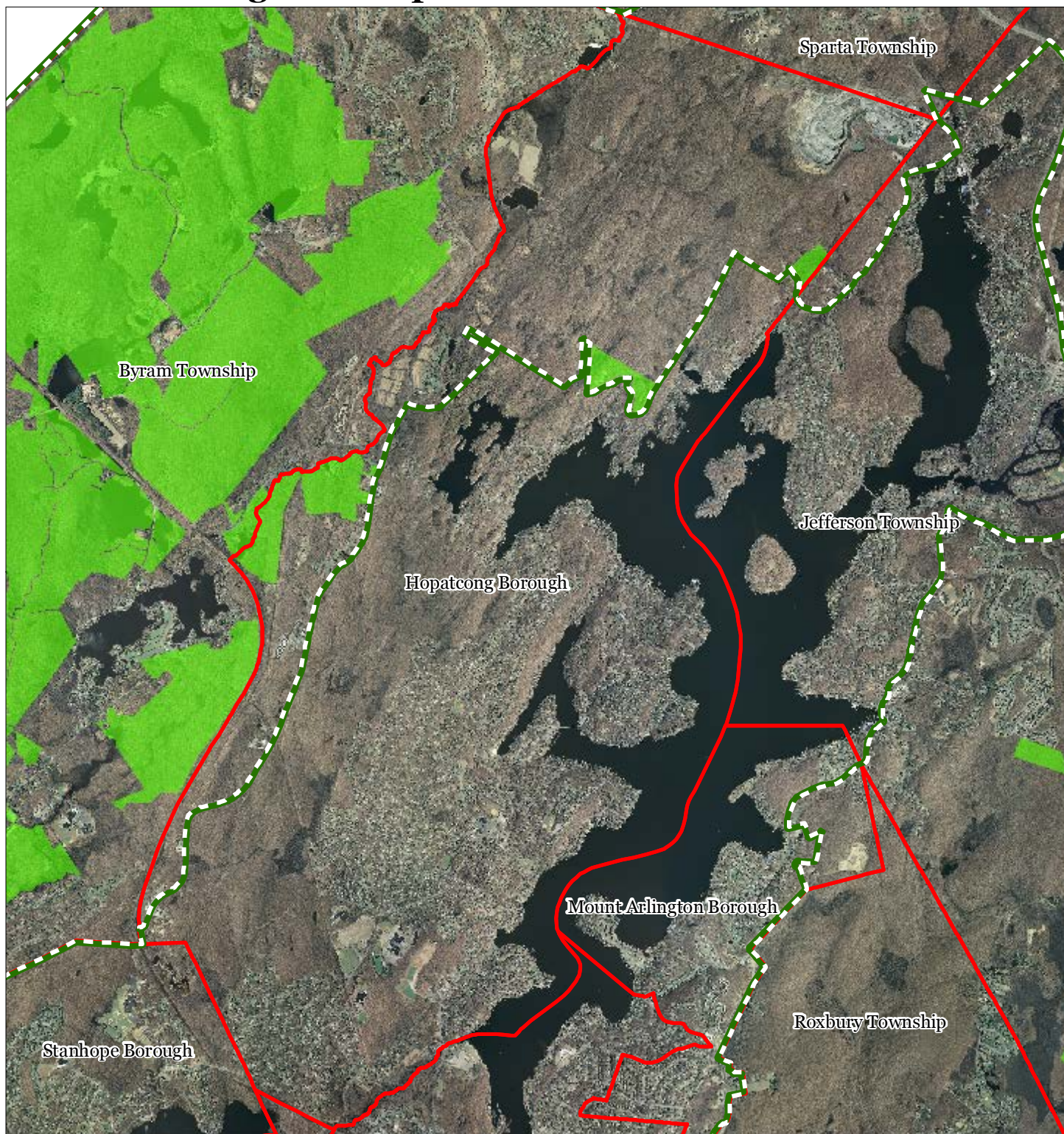
1 inch = 0.72 miles





Highlands Council
New Jersey



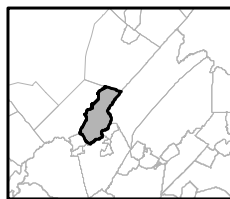
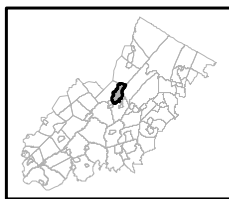
August 2012

Exhibit CC: Highlands Special Environmental Zone



-  Special Environmental Zones
-  Preservation Area
-  Municipal Boundaries

Hopatcong Borough

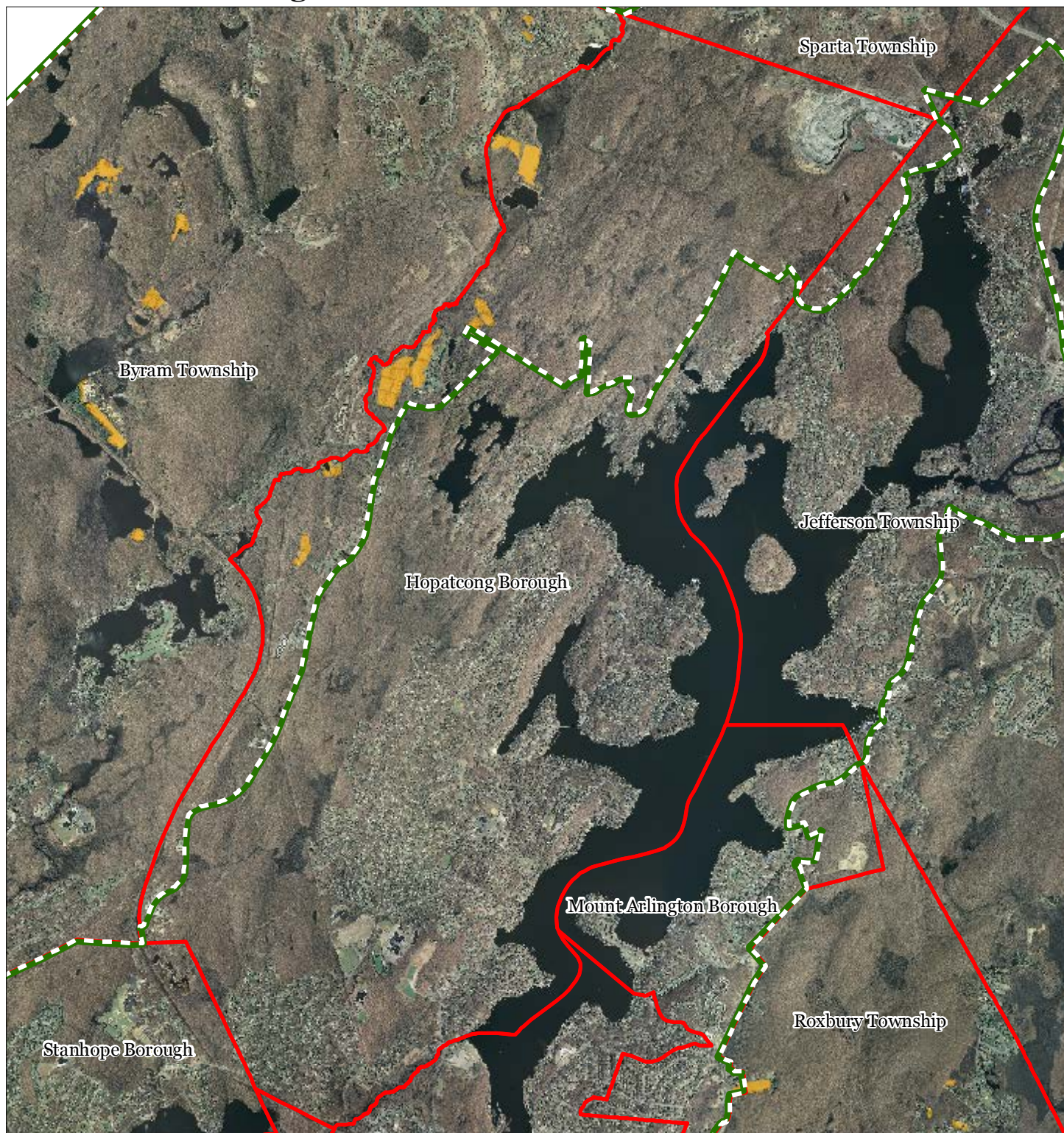


1 inch = 0.72 miles



August 2012

Exhibit DD: All Agricultural Uses



SADC Easements



SADC Final



SADC Preserved



Preserved Farmland



Agriculture Uses

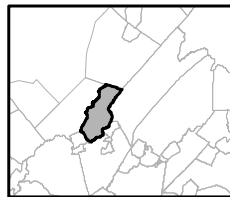
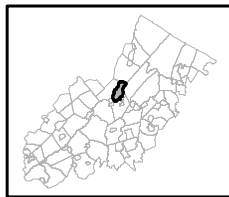


Preservation Area



Municipal Boundaries

Hopatcong Borough

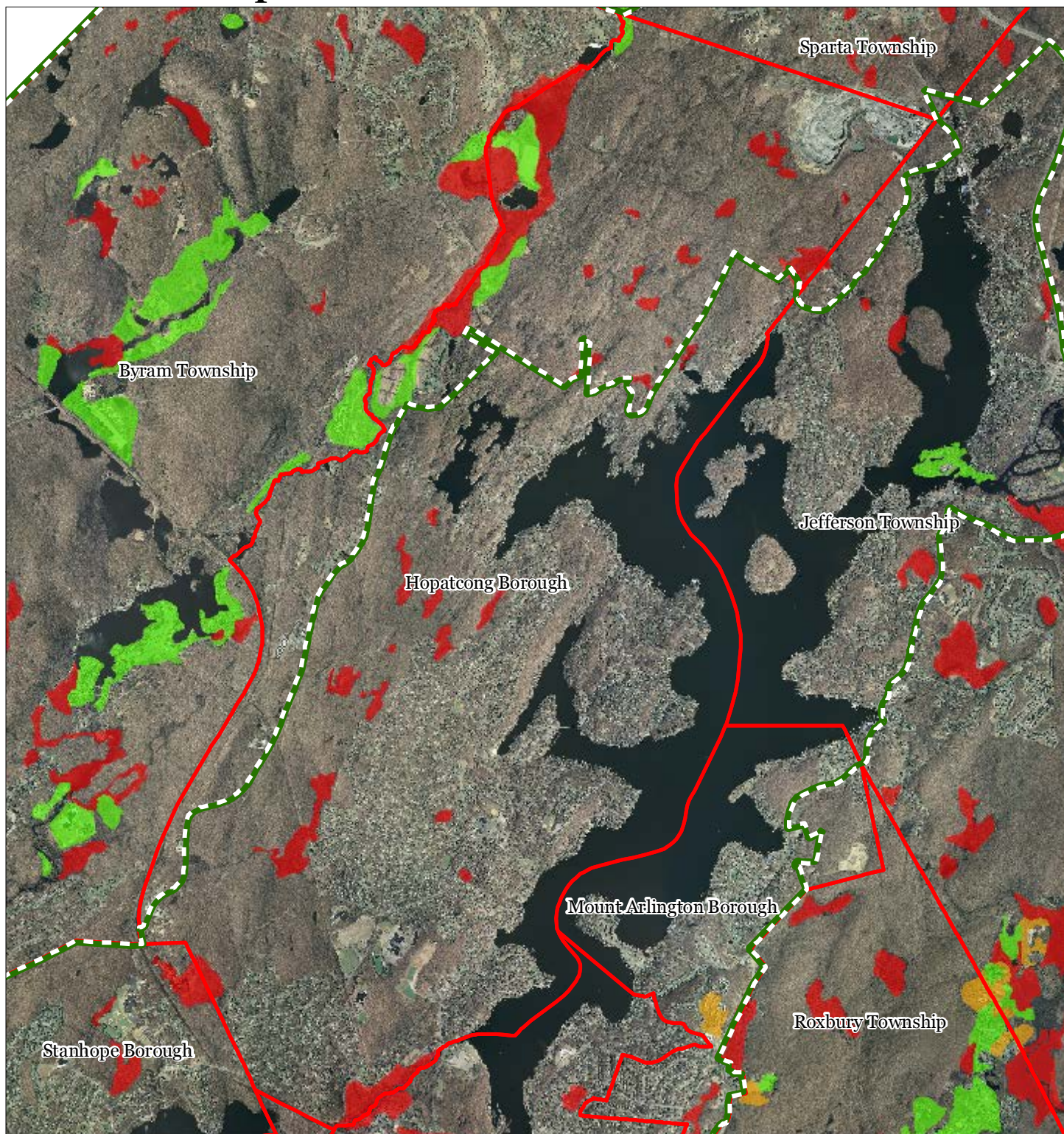


1 inch = 0.72 miles



August 2012

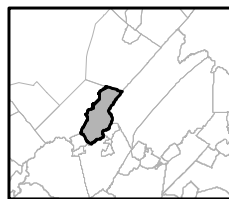
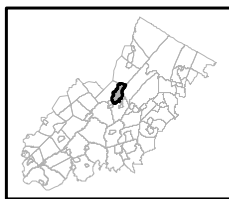
Exhibit EE: Important Farmland Soils



Important Farmland Soils

- Prime Farmland
- Farmland of Local Importance
- Farmland of Statewide Importance
- Farmland of Unique Importance
- Preservation Area
- Municipal Boundaries

Hopatcong Borough

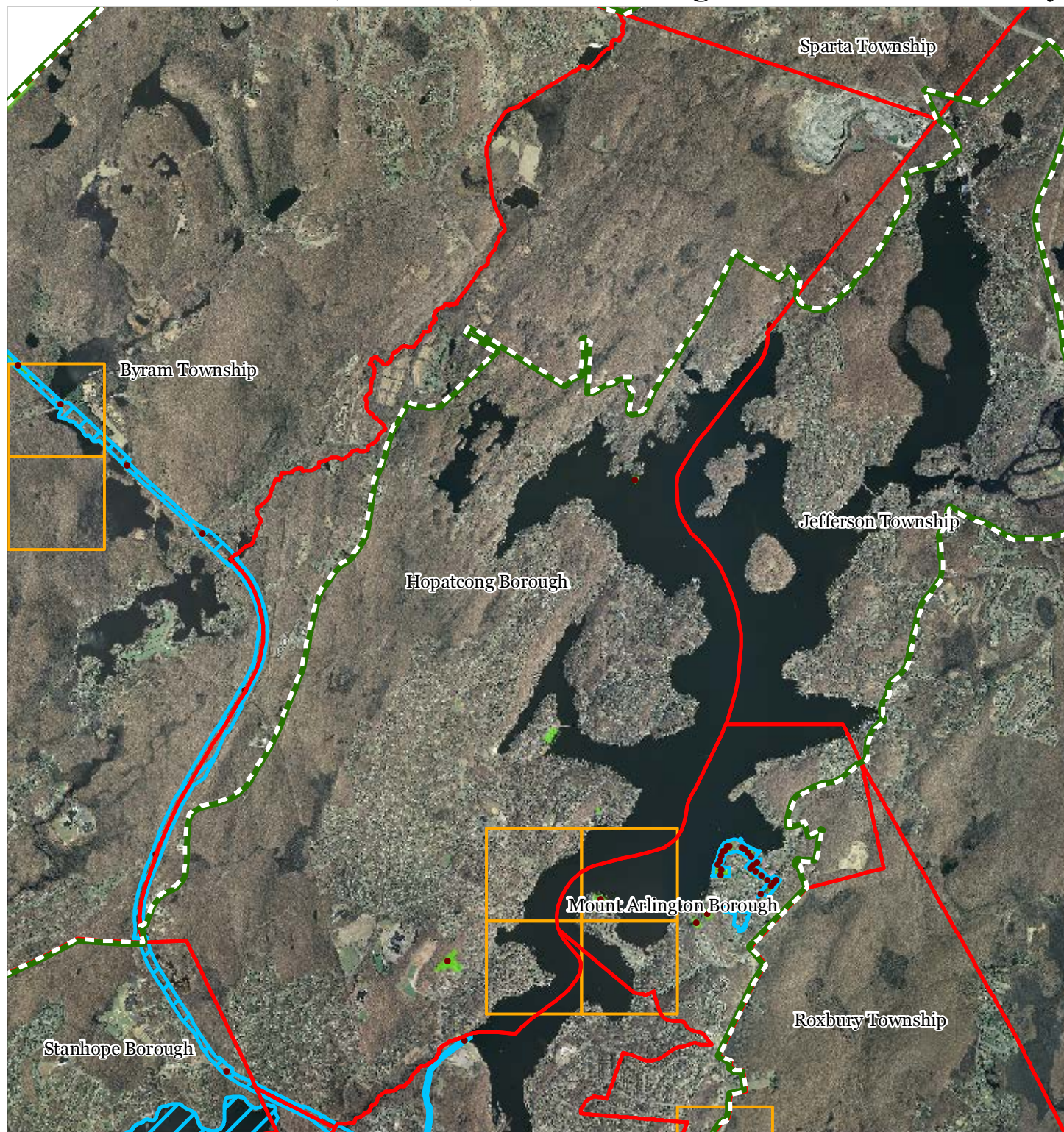


1 inch = 0.72 miles



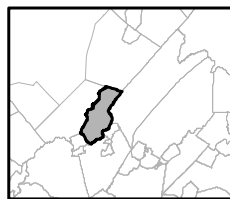
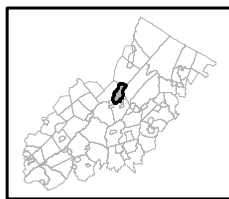
August 2012

Exhibit HH: Historic, Cultural, and Archaeological Resources Inventory



-  Preservation Area
-  Municipal Boundaries
-  Archaeological Grids (1 sqmi)
-  NJ Historic Districts
-  Historic Property Points
-  Historic Property Polygons

Hopatcong Borough

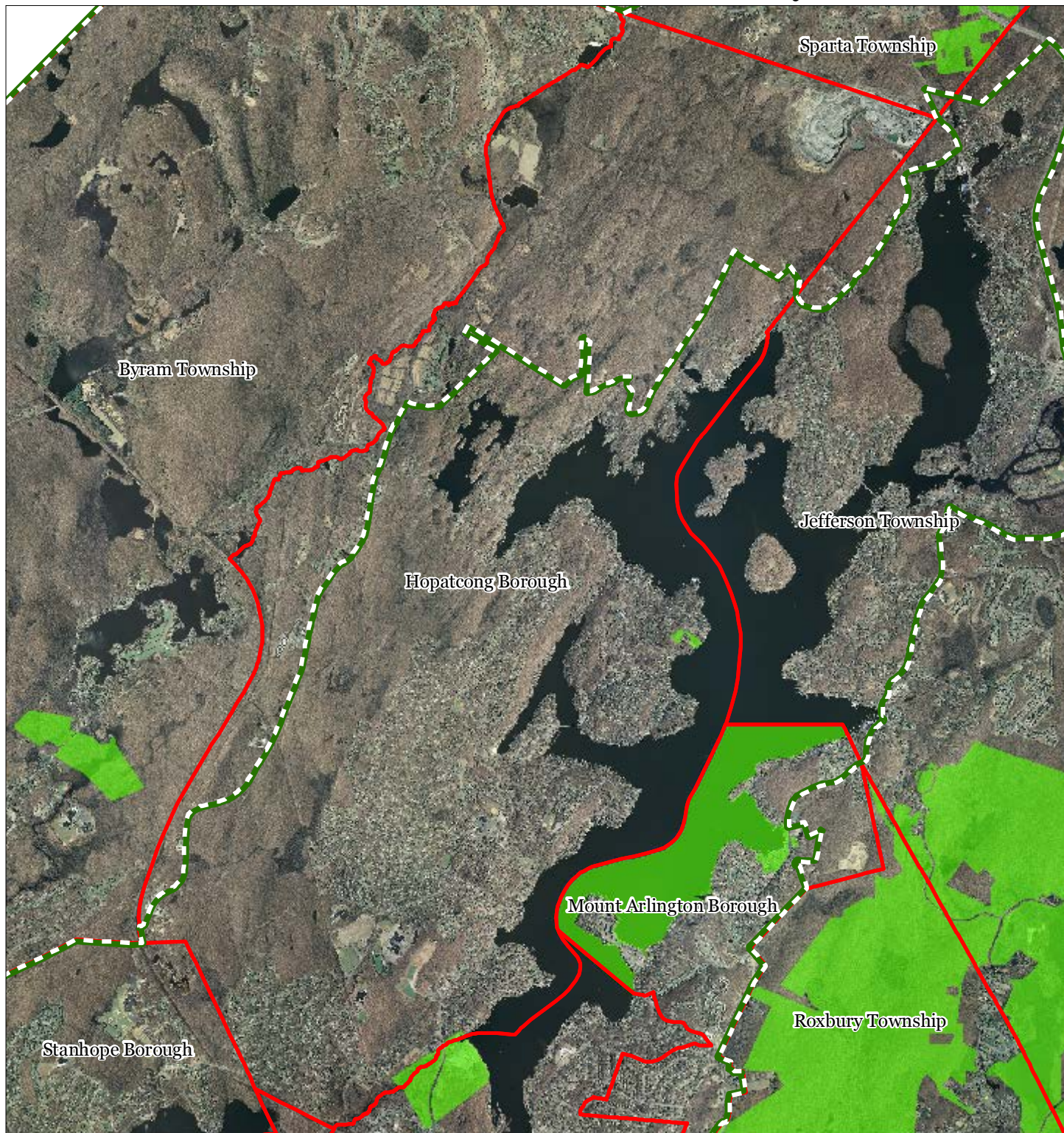





1 inch = 0.72 miles



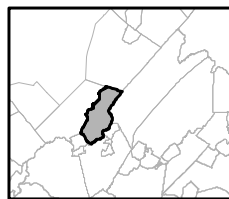
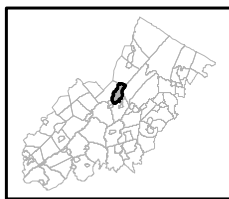
August 2012

Exhibit II: Baseline Scenic Resources Inventory



-  Scenic Resources
-  Municipal Boundaries
-  Preservation Area

Hopatcong Borough

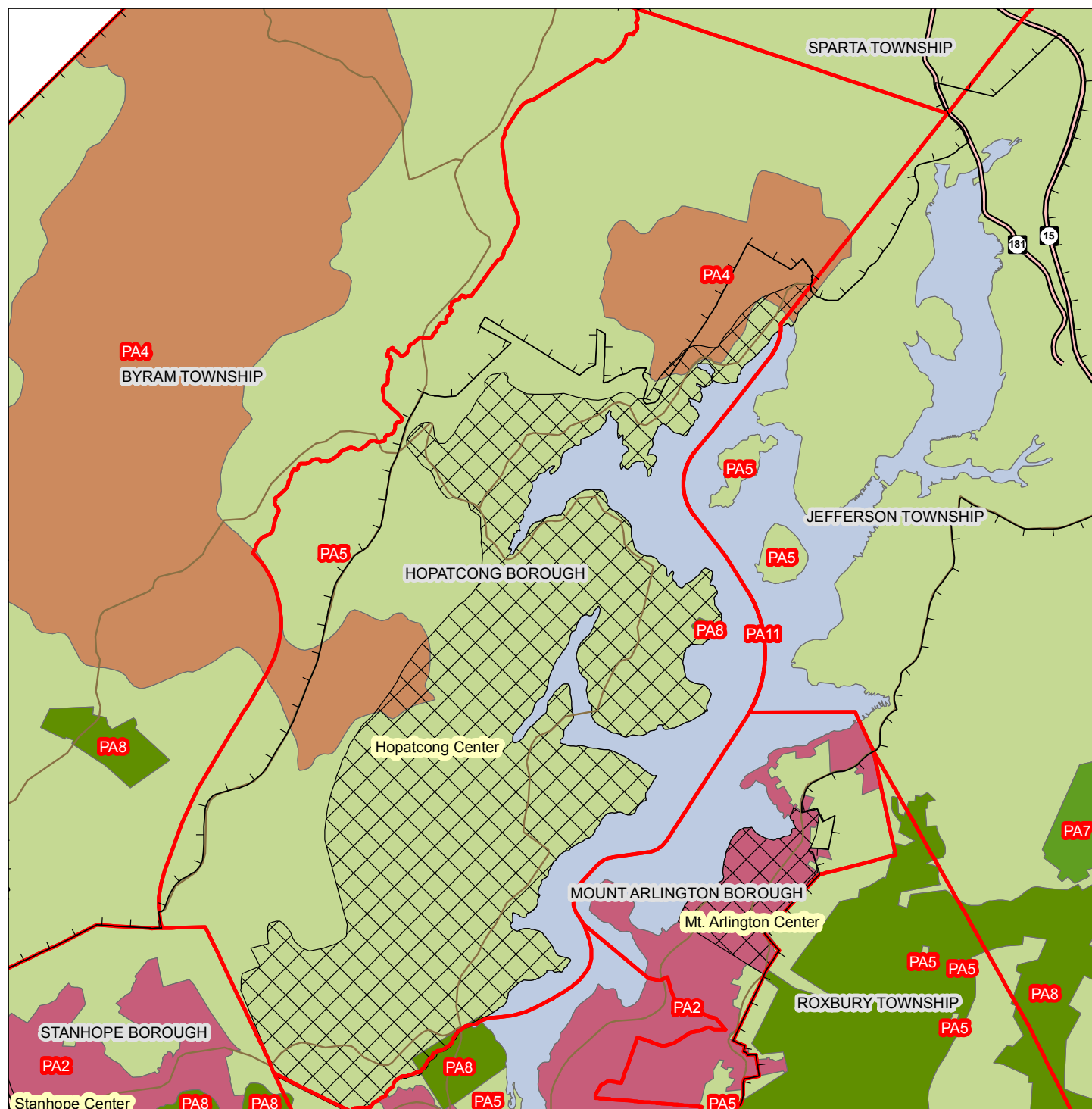


1 inch = 0.72 miles



August 2012

Exhibit JJ: State Planning Areas & Designated Centers



Legend

- Preservation Area
- Municipal Boundaries
- Interstate Highways
- U.S. Routes
- State Routes
- County Routes
- Designated Centers*

State Planning Areas*

- METROPOLITAN (PA1)
- SUBURBAN (PA2)
- FRINGE (PA3)
- RURAL (PA4)
- RURAL ENVIRONMENTALLY SENSITIVE (PA42)
- ENVIRONMENTALLY SENSITIVE (PA5)
- PARK (PA6)
- FEDERAL PARK (PA7)
- STATE PARK (PA8)
- WATER (PA11)
- MILITARY (PA12)

1 inch equals 0.76 miles

* All designated centers expired. Center designation may be redesignated by the State Planning Commission and the Highlands Council. State Planning Areas are from the State Development and Redevelopment Plan.

