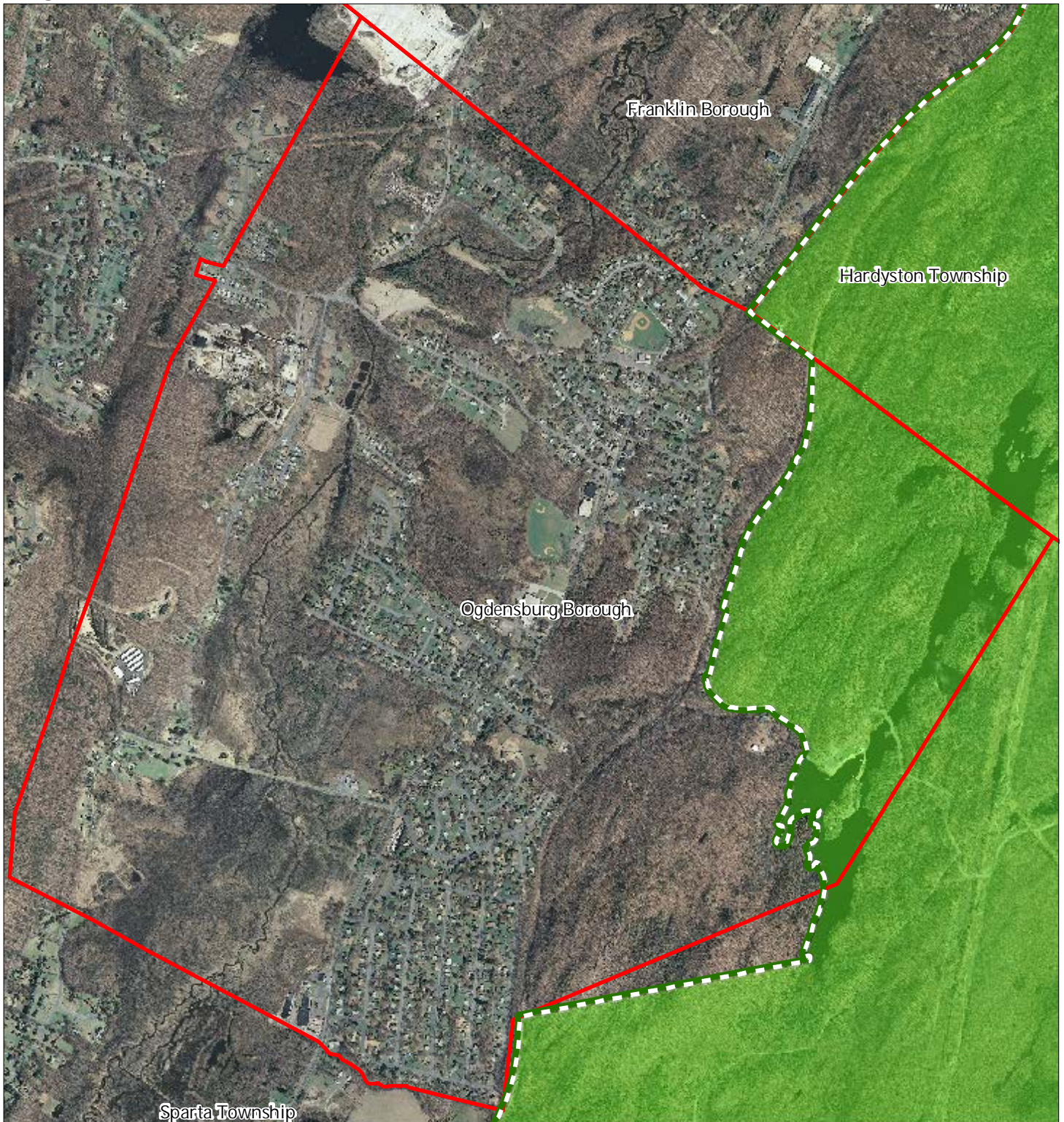


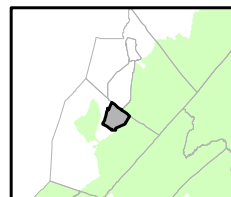
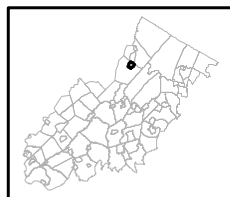


Figure 1: Preservation Area



-  Preservation Area
-  Municipal Boundaries

Ogdensburg Borough

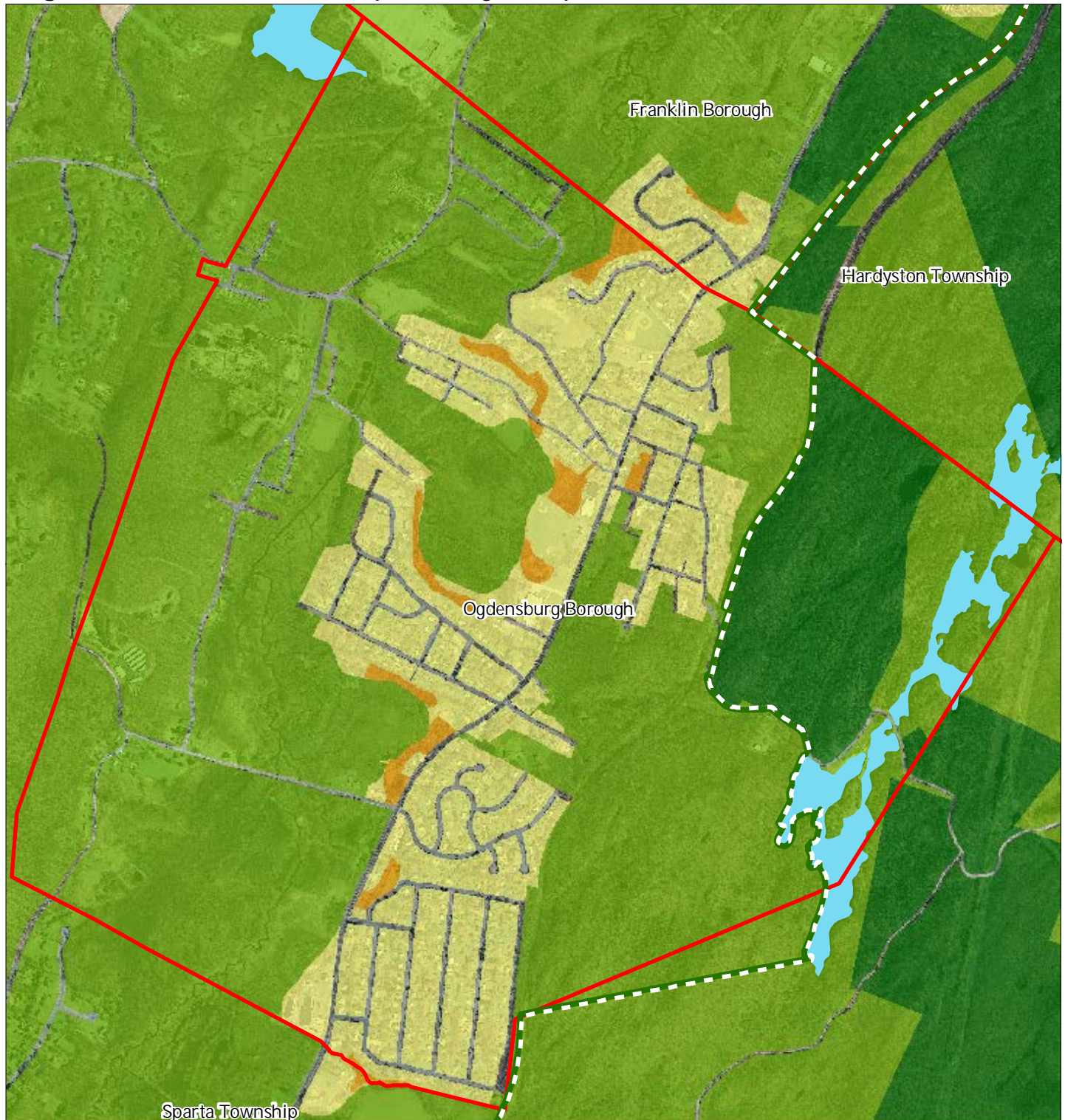


1 inch = 0.244 miles



August 2011

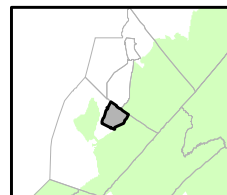
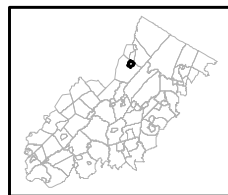
Figure 2: Land Use Capability Map Zones



Regional Master Plan Overlay Zone Designation

- |  |                             |
|--|-----------------------------|
| <b>Zone</b>                                    |                             |
| Protection                                     | Lakes Greater Than 10 acres |
| Conservation                                   | Preservation Area           |
| Existing Community                             | Municipal Boundaries        |
| <b>Sub-Zone</b>                                |                             |
| Existing Community Environmentally Constrained |                             |
| Conservation Environmentally Constrained       |                             |
| Lake Community                                 |                             |
| Wildlife Management                            |                             |

Ogdensburg Borough

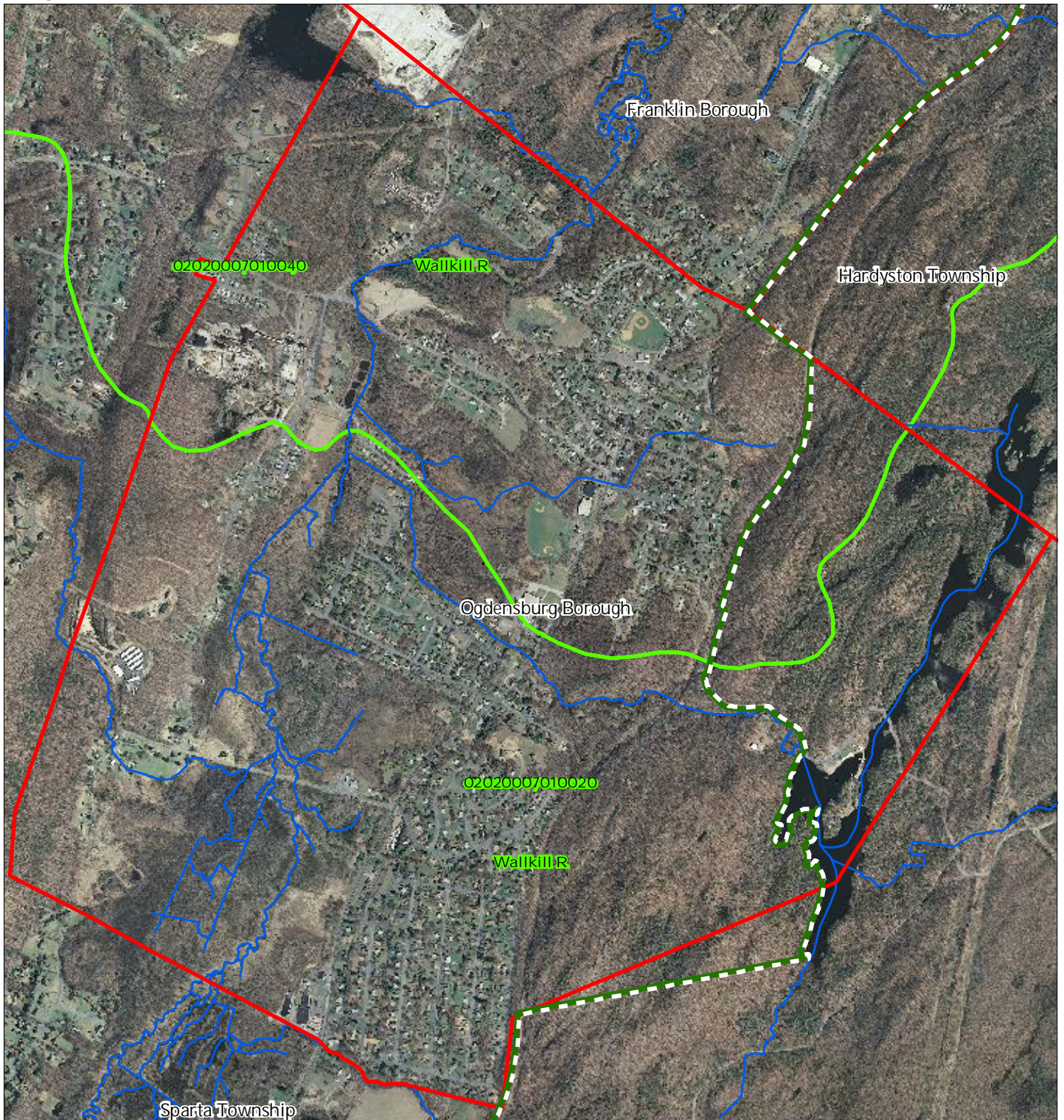






1 inch = 0.244 miles



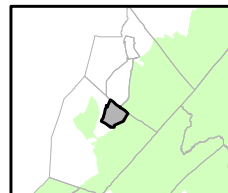
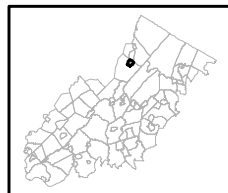
August 2011

Figure 3: HUC 14 Boundaries



-  HUC 14 Subwatersheds
-  Stream Centerlines
-  Preservation Area
-  Municipal Boundaries

Ogdensburg Borough

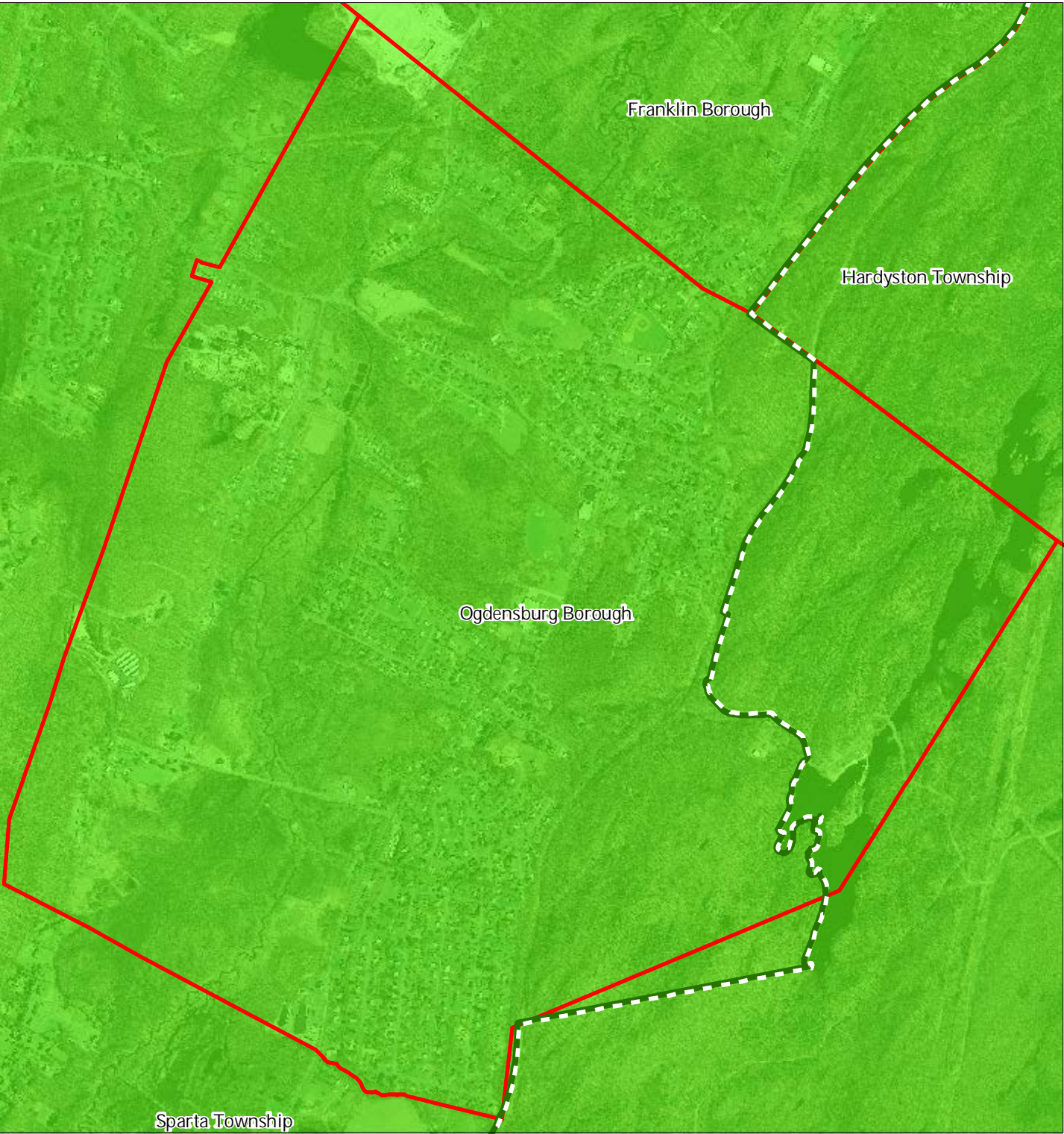





1 inch = 0.244 miles



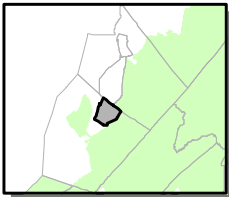
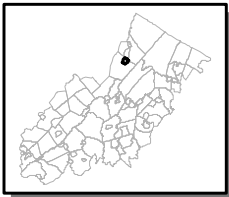
August 2011

Figure 4: Forest Resource Area



-  Forest Resource Area
-  Preservation Area
-  Municipal Boundaries

Ogdensburg Borough






1 inch = 0.244 miles

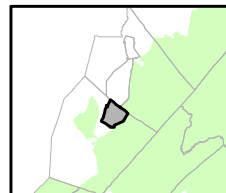
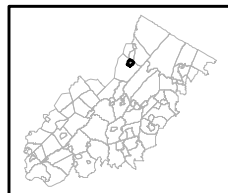


Figure 5: Total Forest Area



-  Forested Areas
-  Preservation Area
-  Municipal Boundaries

## Ogdensburg Borough

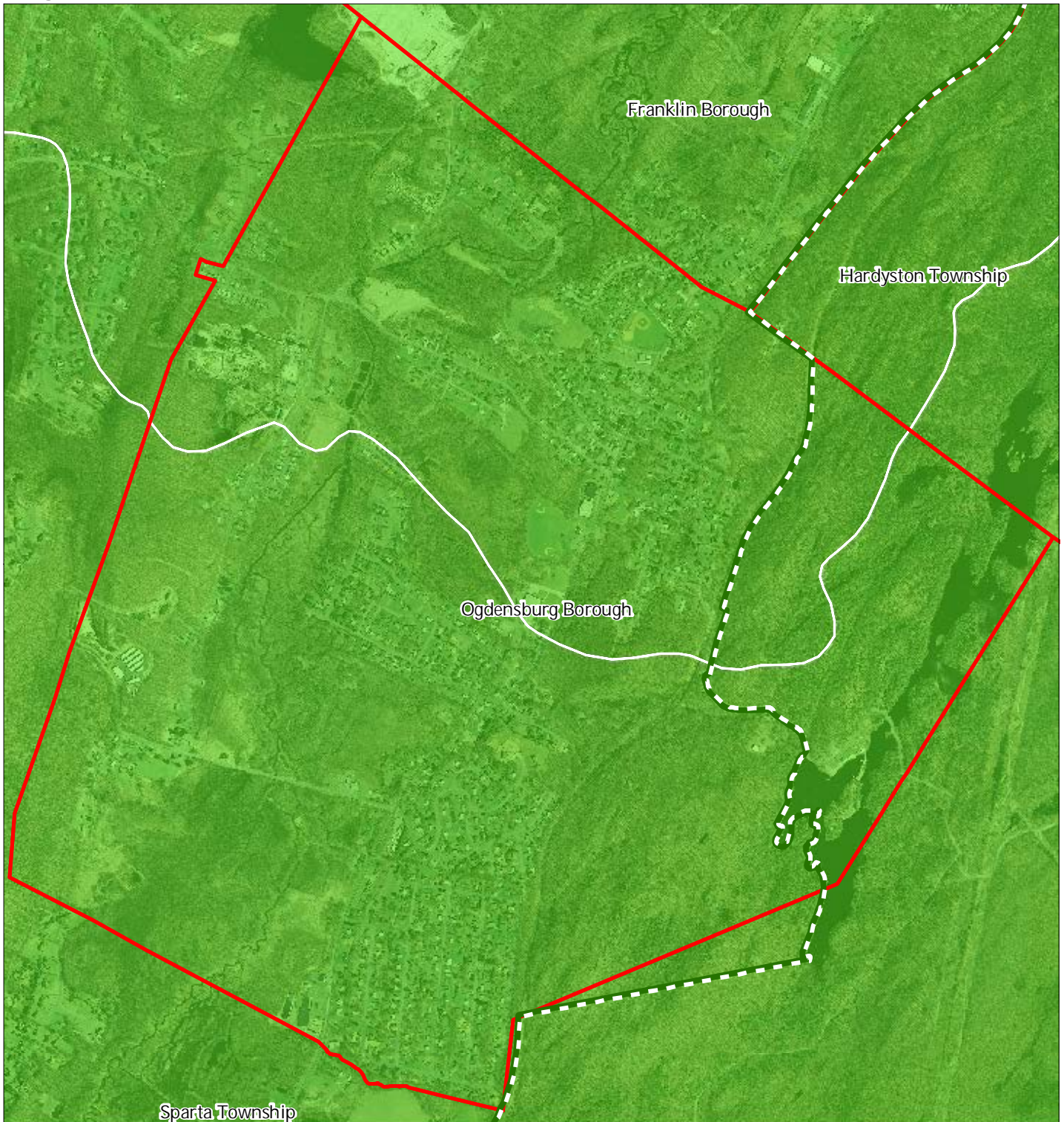


1 inch = 0.244 miles








August 2011

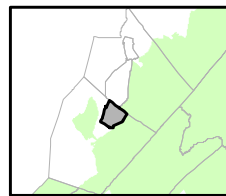
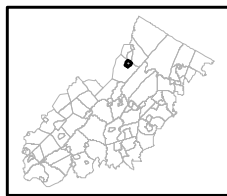
Figure 6: Forest Subwatersheds



Forest Integrity by HUC14 Subwatershed

-  *Low*
-  *Moderate*
-  *High*
-  Preservation Area
-  Municipal Boundaries

Ogdensburg Borough

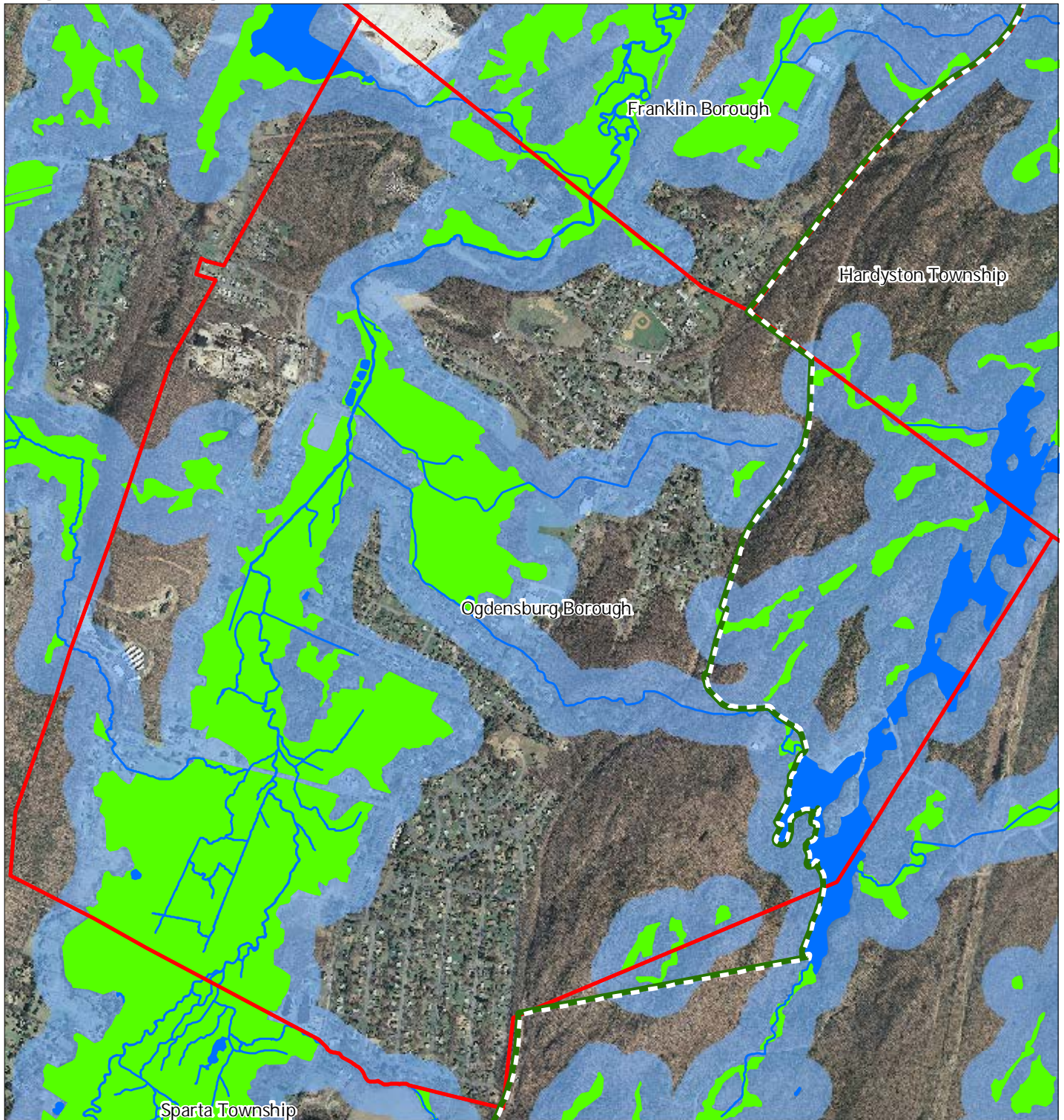


1 inch = 0.244 miles



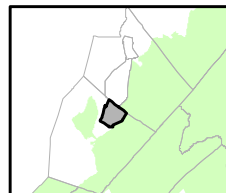
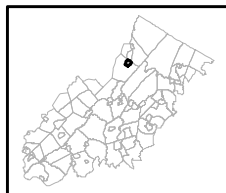
August 2011

Figure 7: Highlands Open Waters



-  Highlands Open Water Buffers (300ft)
-  Streams
-  Wetlands
-  Lakes & Ponds
-  Preservation Area
-  Municipal Boundaries

Ogdensburg Borough



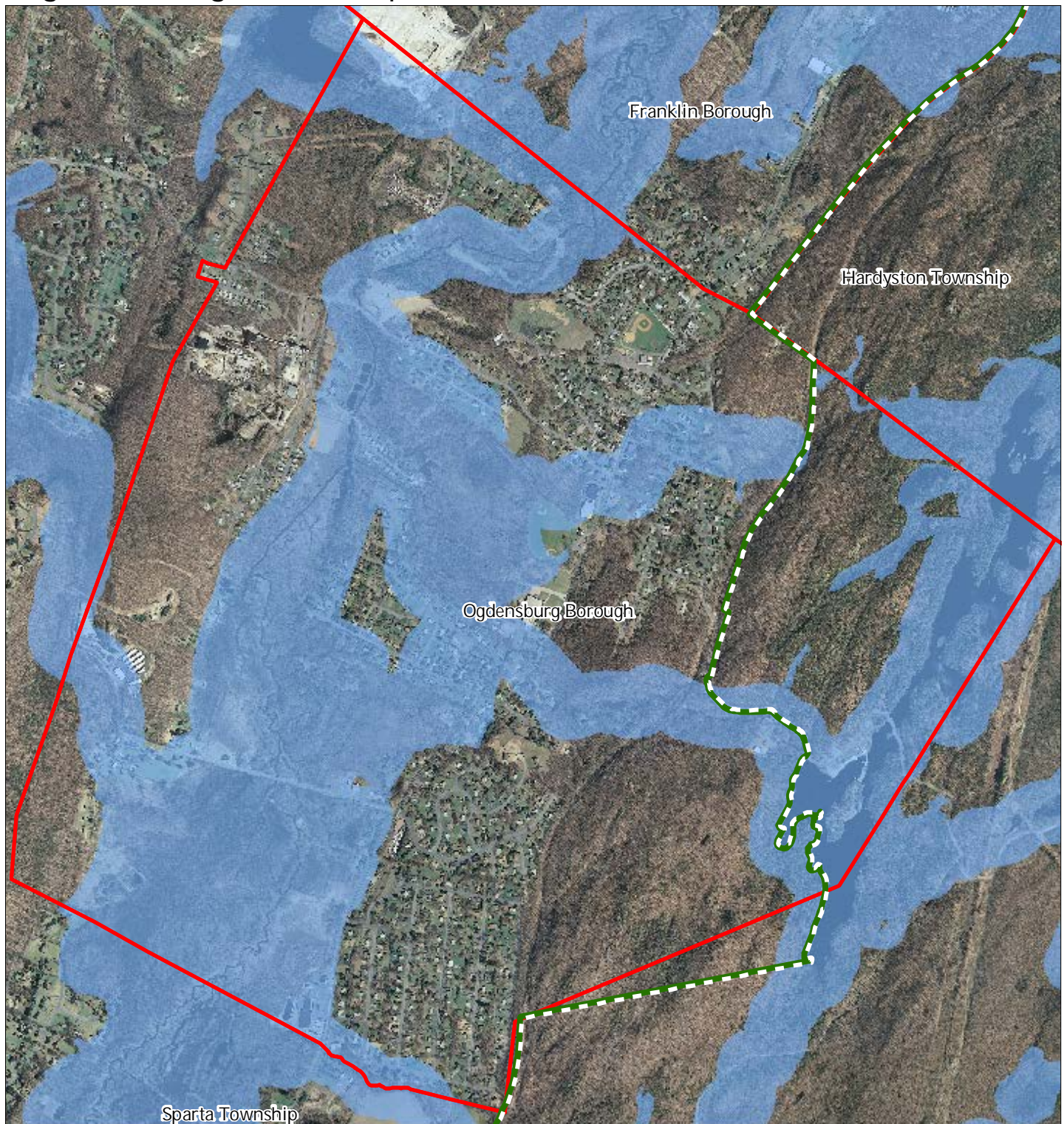
1 inch = 0.244 miles

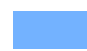


**Highlands  
Council**  
New Jersey



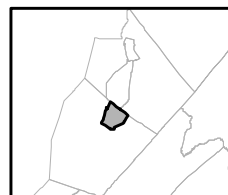
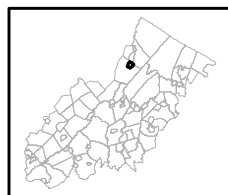
August 2011

Figure 8: Highlands Riparian Areas



-  Riparian Area
-  Preservation Area
-  Municipal Boundaries

Ogdensburg Borough

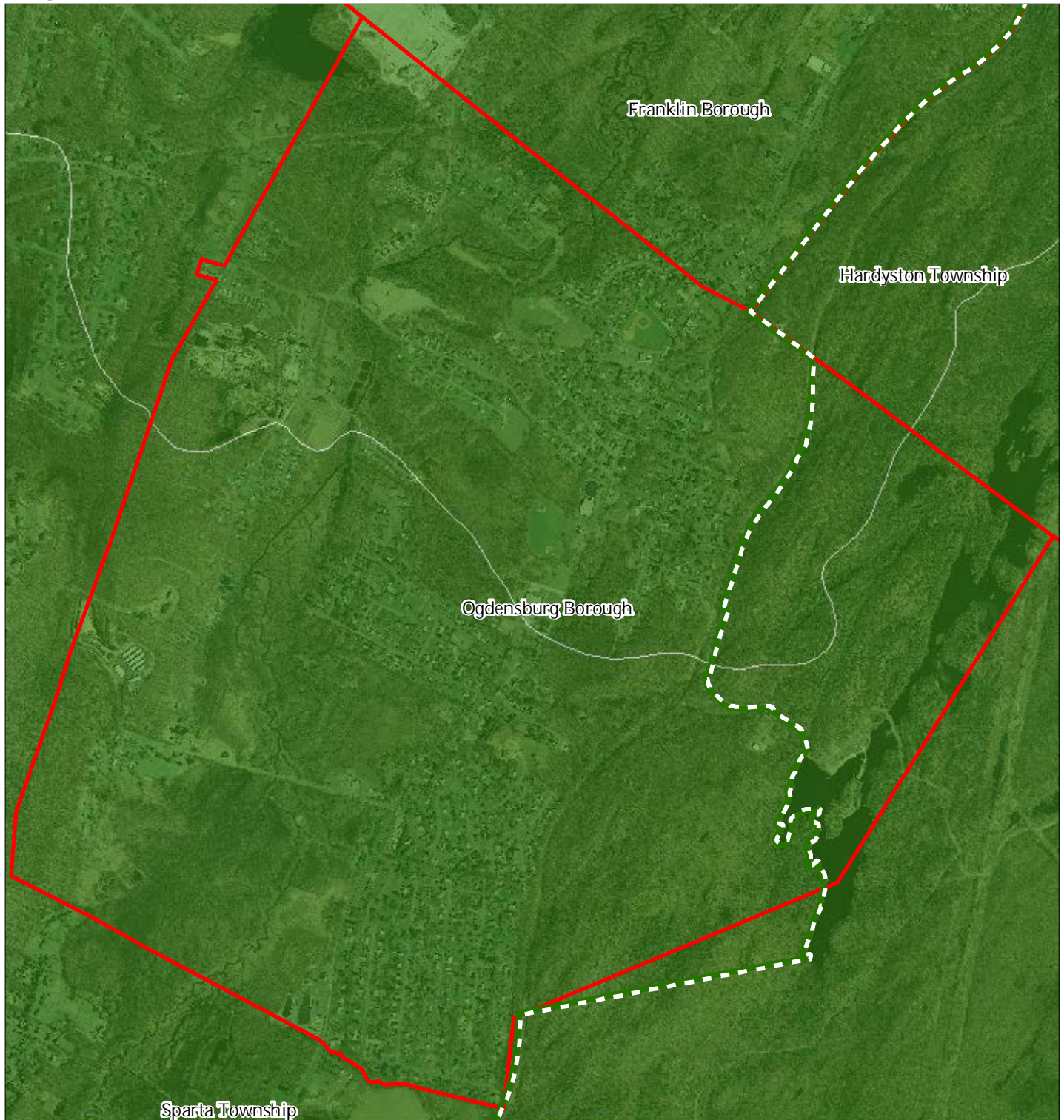


1 inch = 0.244 miles



August 2011

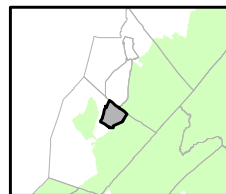
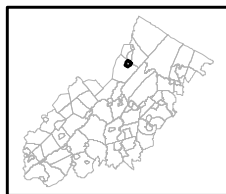
Figure 9: Watershed Values



Watershed Values by HUC14 Subwatershed

- Low*
- Moderate*
- High*
- Preservation Area
- Municipal Boundaries

Ogdensburg Borough

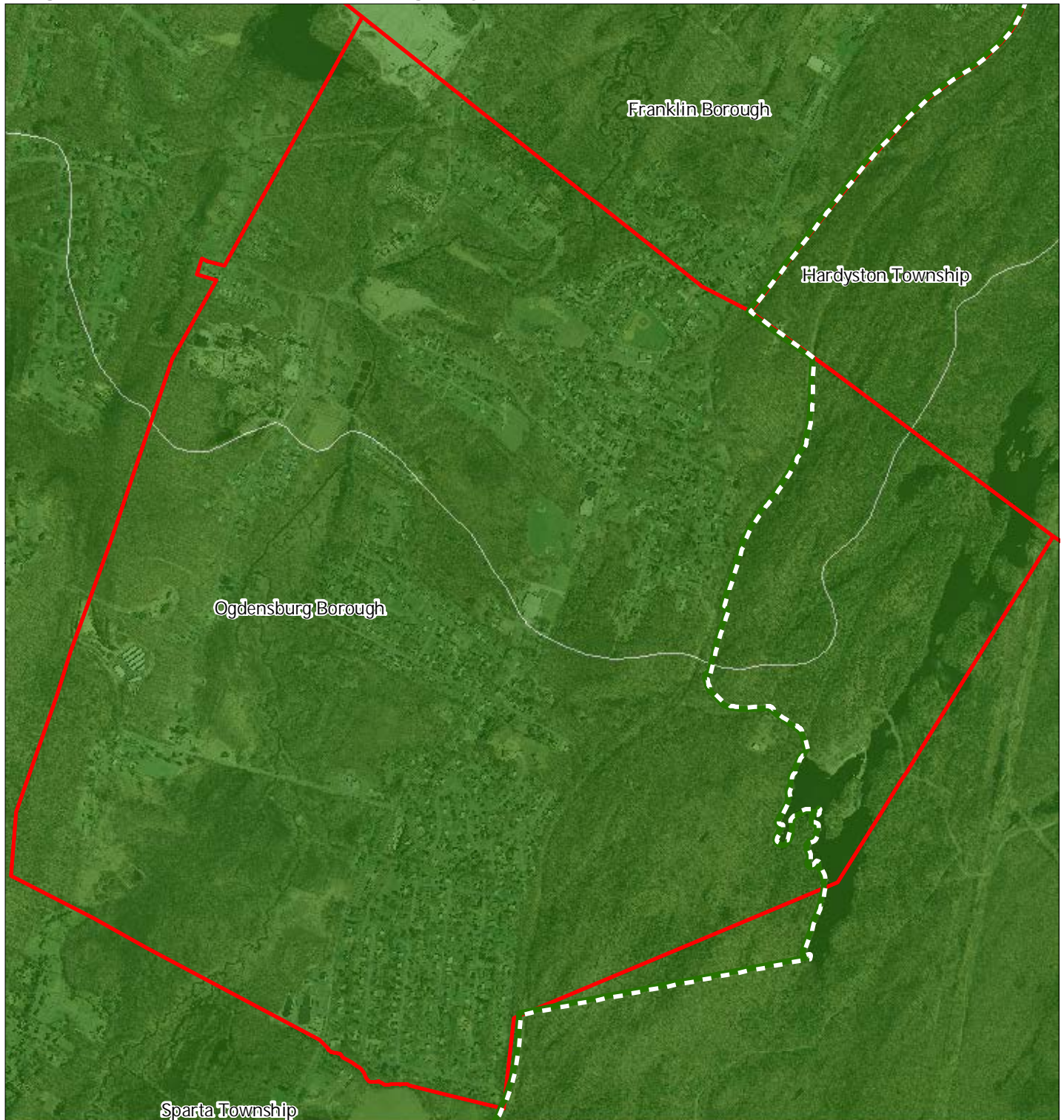


1 inch = 0.244 miles



August 2011

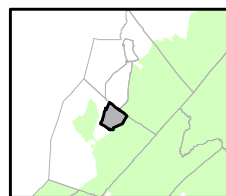
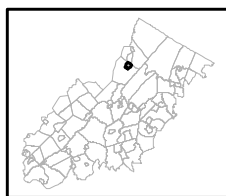
Figure 10: Riparian Integrity



Riparian Integrity by HUC14 Subwatershed

- Low*
- Moderate*
- High*
- Preservation Area
- Municipal Boundaries

Ogdensburg Borough

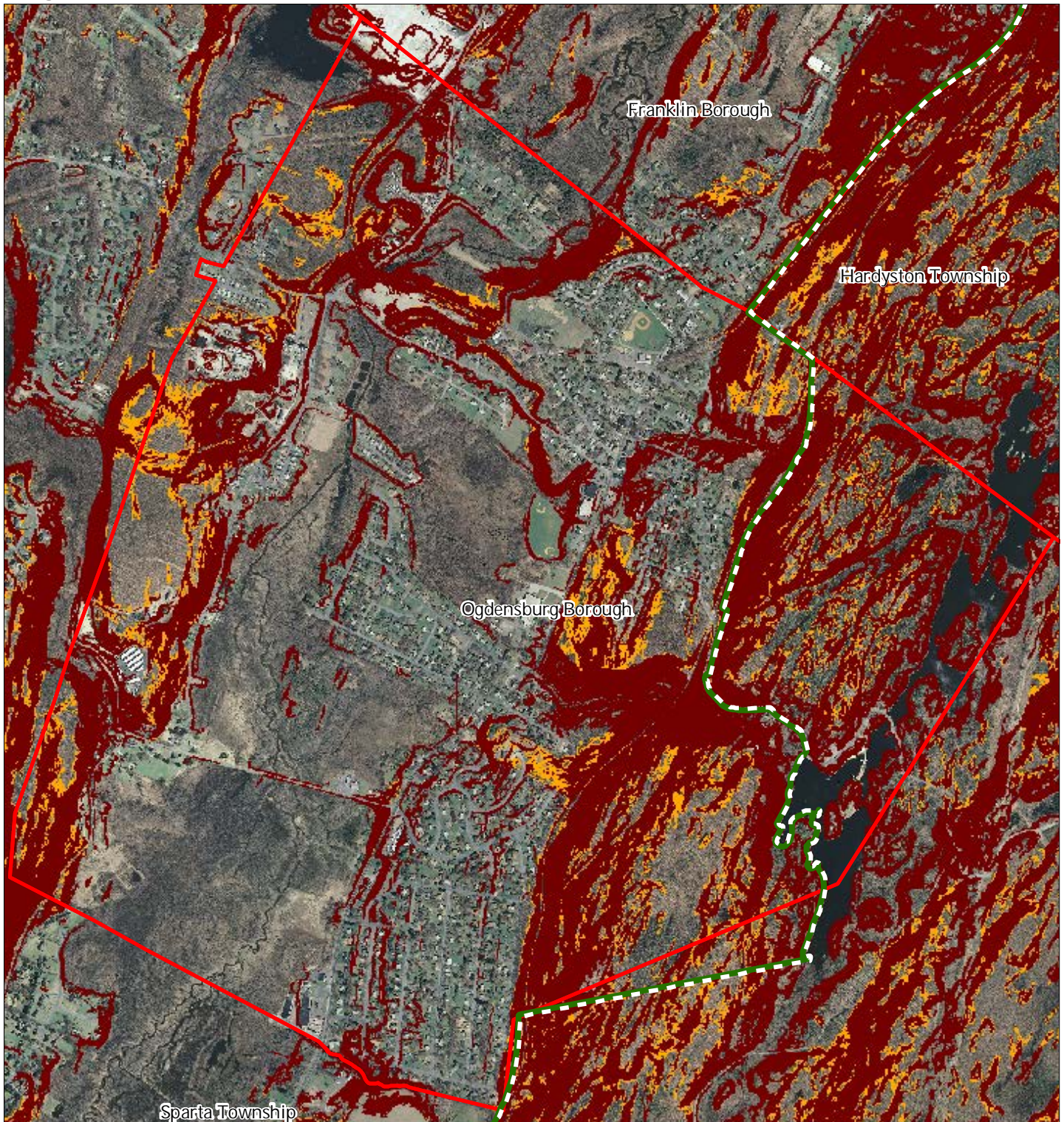


1 inch = 0.244 miles







August 2011

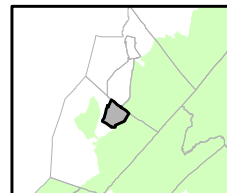
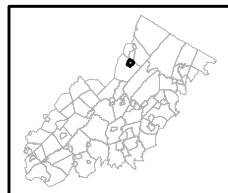
Figure 11: Steep Slope Protection Areas



Steep Slopes

-  Moderate
-  Severe
-  Preservation Area
-  Municipal Boundaries

Ogdensburg Borough






1 inch = 0.244 miles



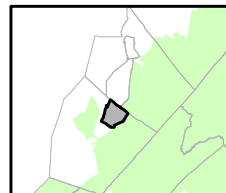
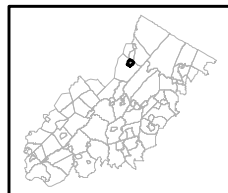
August 2011

Figure 12: Critical Wildlife Habitat



-  Critical Wildlife Habitat
-  Preservation Area
-  Municipal Boundaries

Ogdensburg Borough

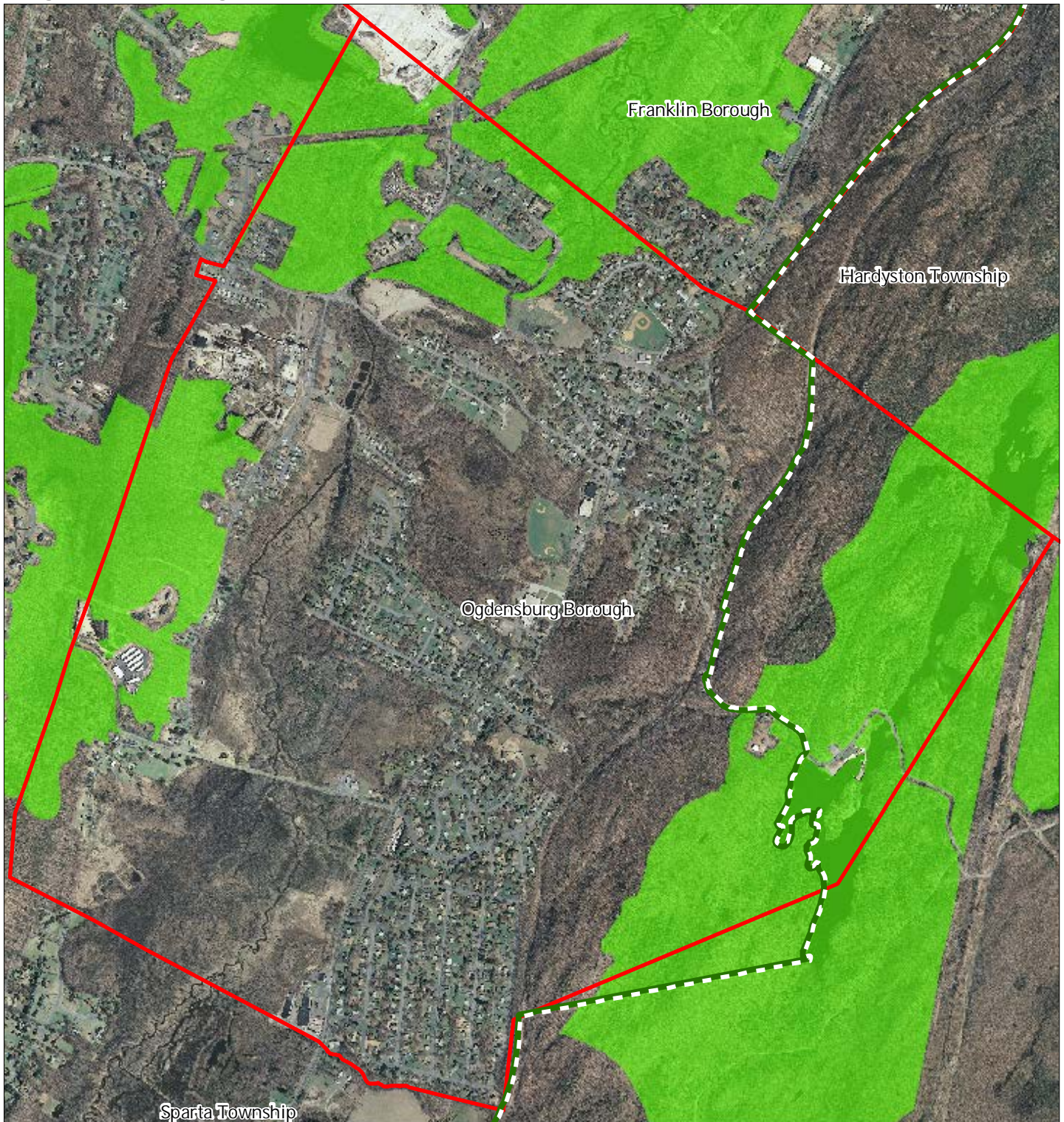


1 inch = 0.244 miles



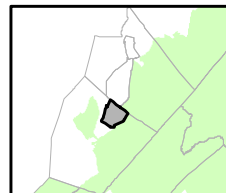
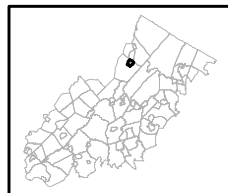
August 2011

Figure 13: Significant Natural Areas



- Significant Natural Areas
- Preservation Area
- Municipal Boundaries

Ogdensburg Borough

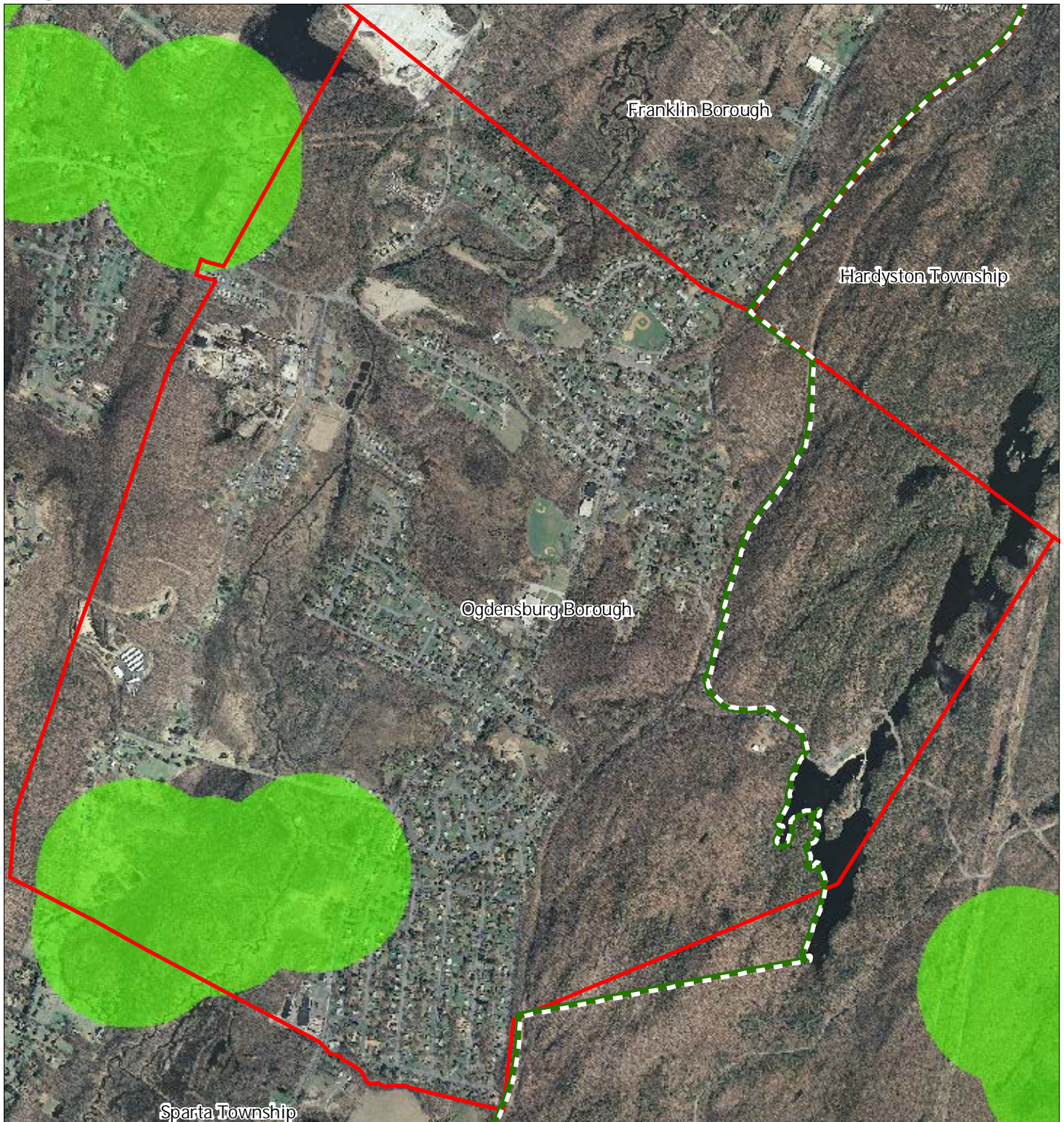





1 inch = 0.244 miles



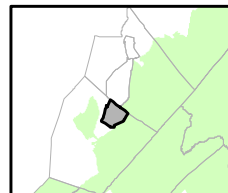
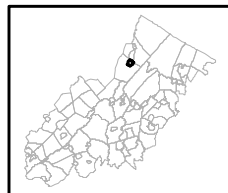
August 2011

Figure 14: Vernal Pools



-  Vernal Pools + 1000ft Buffer
-  Preservation Area
-  Municipal Boundaries

Ogdensburg Borough



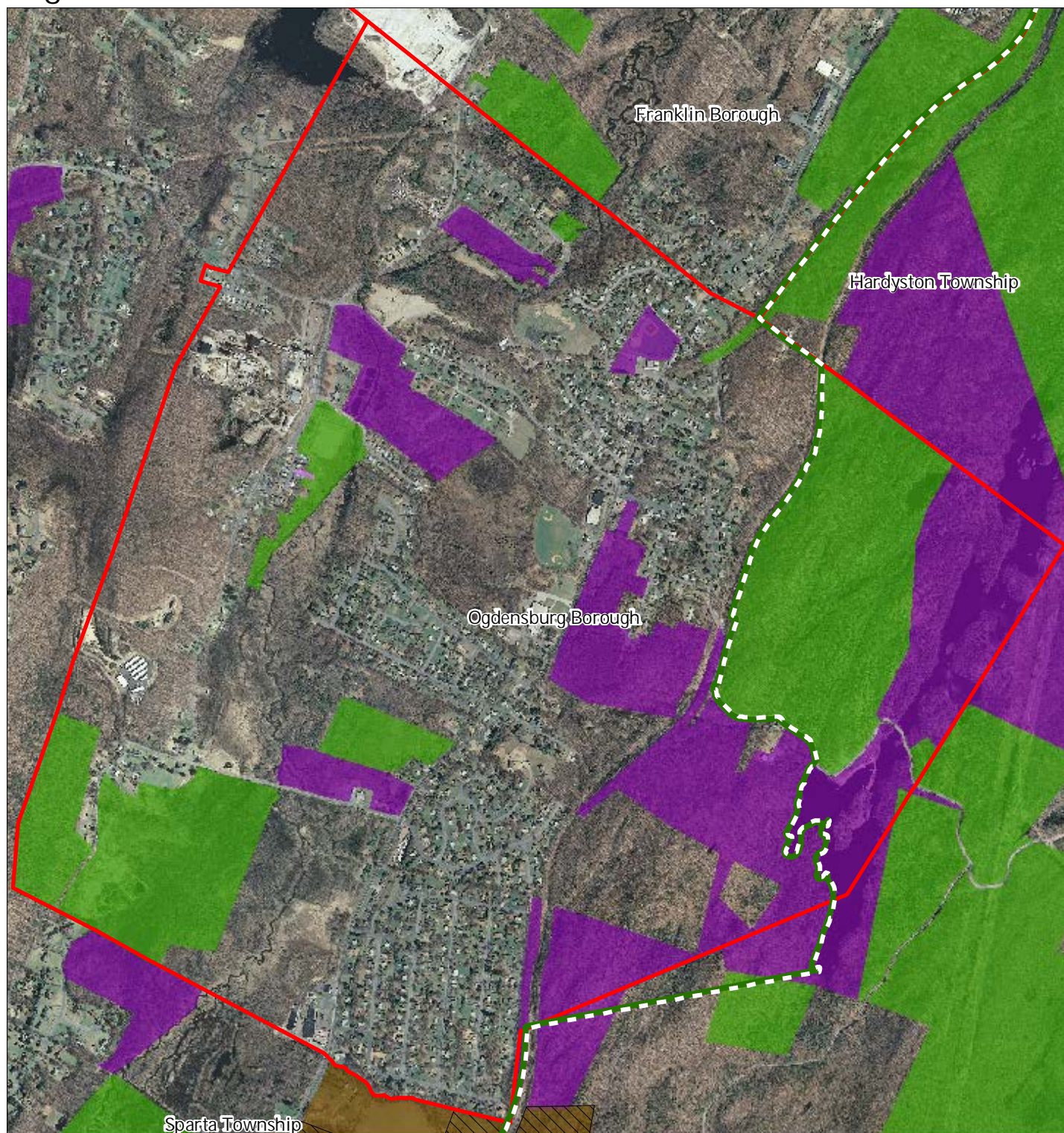
1 inch = 0.244 miles

 Highlands Council  
New Jersey



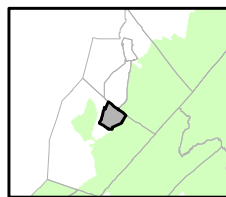
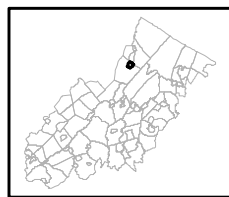
August 2011

Figure 15: Preserved Lands



- |   |                               |
|---|-------------------------------|
| <b>Preserved Lands</b>                  | <b>Conservation Easements</b> |
| Federal Open Space                      | Green Acres                   |
| State Open Space                        | <b>SADC Easements</b>         |
| County Open Space                       | SADC Final                    |
| Municipal Open Space                    | SADC Preserved                |
| Non-Profit/Private Open Space           | Municipal Boundaries          |
| Water Supply Watershed Lands            | Preservation Area             |
| Preserved Farmland                      |                               |
| Highlands Transfer of Development Lands |                               |

## Ogdensburg Borough

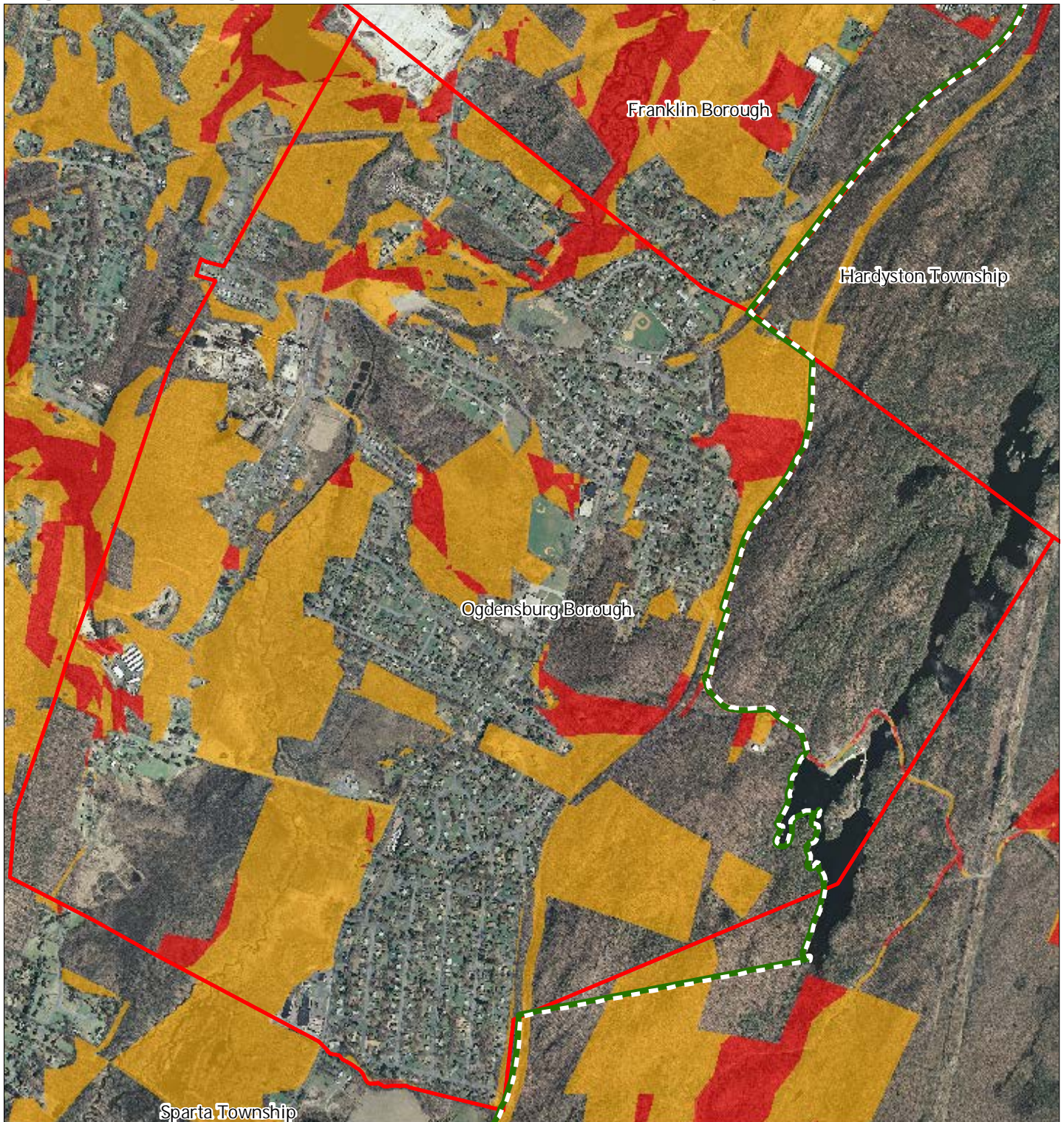


1 inch = 0.244 miles



August 2011

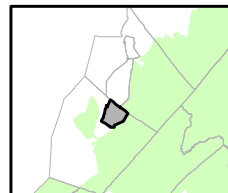
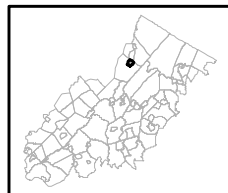
Figure 16: Highlands Conservation Priority Areas



Conservation Priority Area

- Moderate*
- High*
- Preservation Area
- Municipal Boundaries

Ogdensburg Borough



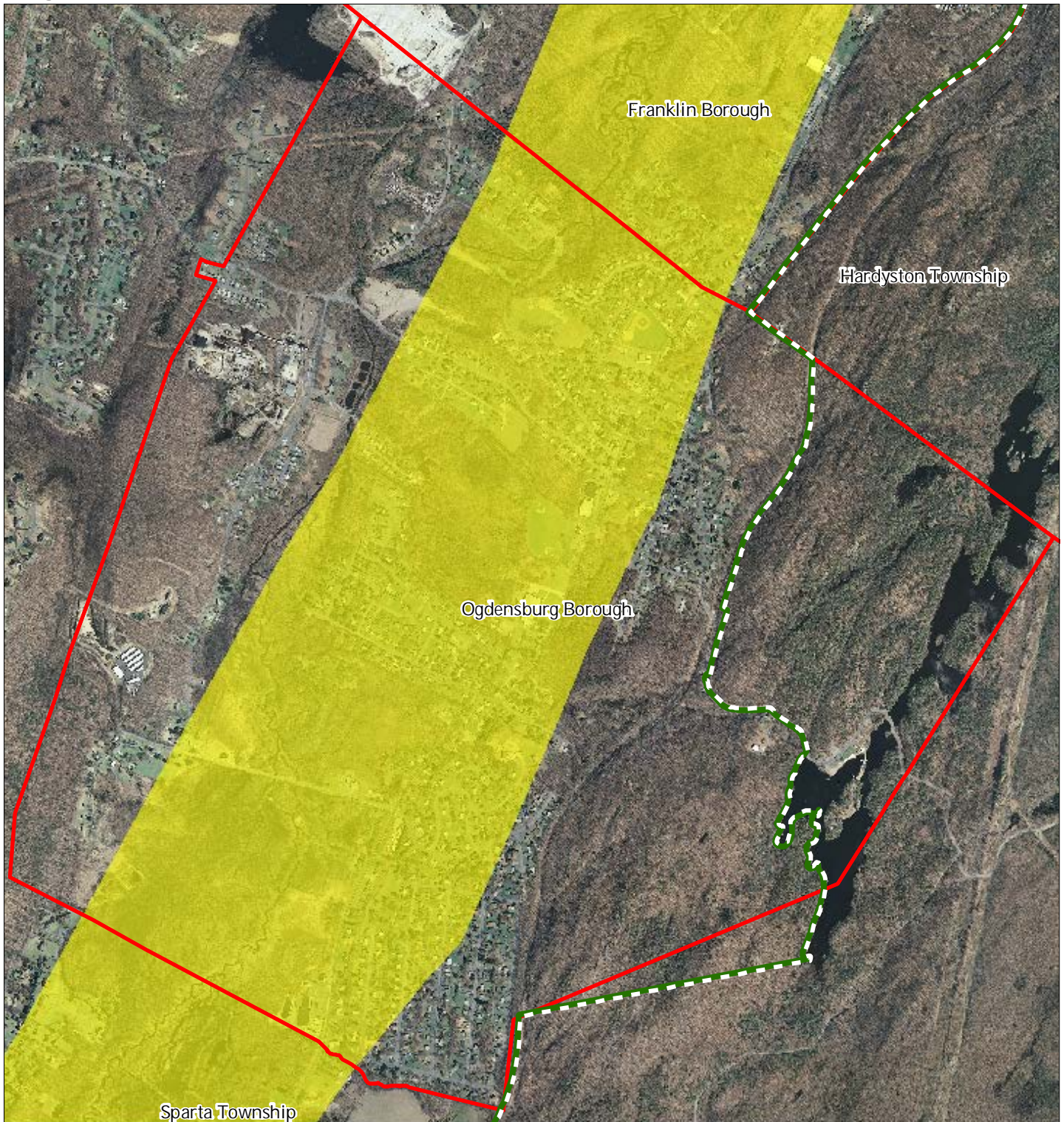
1 inch = 0.244 miles




**Highlands  
Council**  
New Jersey



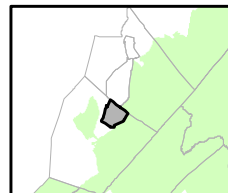
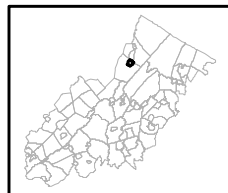
August 2011

Figure 18: Carbonate Rock Area



-  Carbonate Rock Area
-  Preservation Area
-  Municipal Boundaries

## Ogdensburg Borough

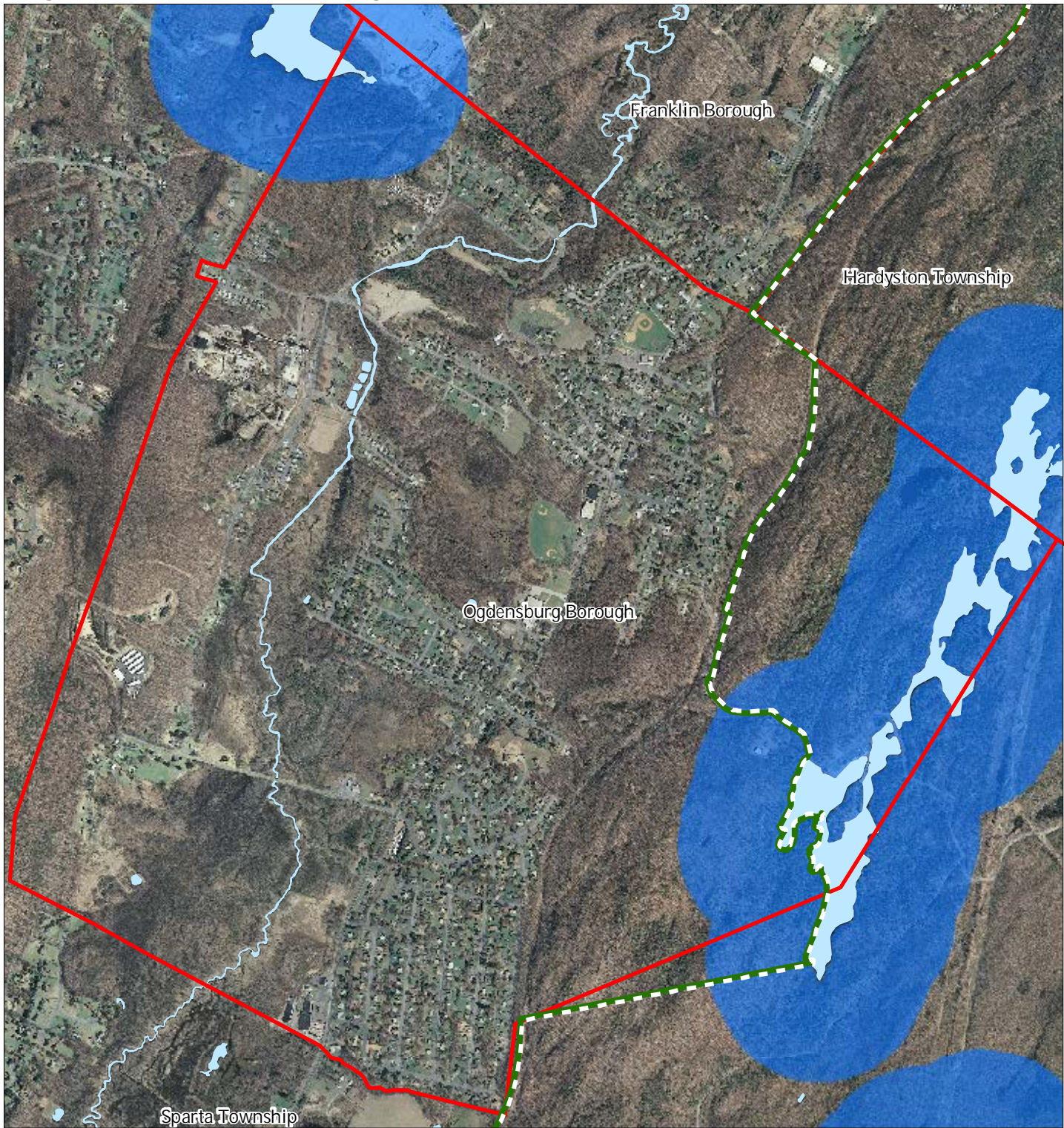


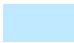



1 inch = 0.244 miles



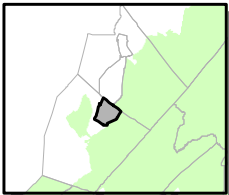
August 2011

Figure 19: Lake Management Area



-  Lakes & Ponds
-  Lake Management Area
-  Preservation Area
-  Municipal Boundaries

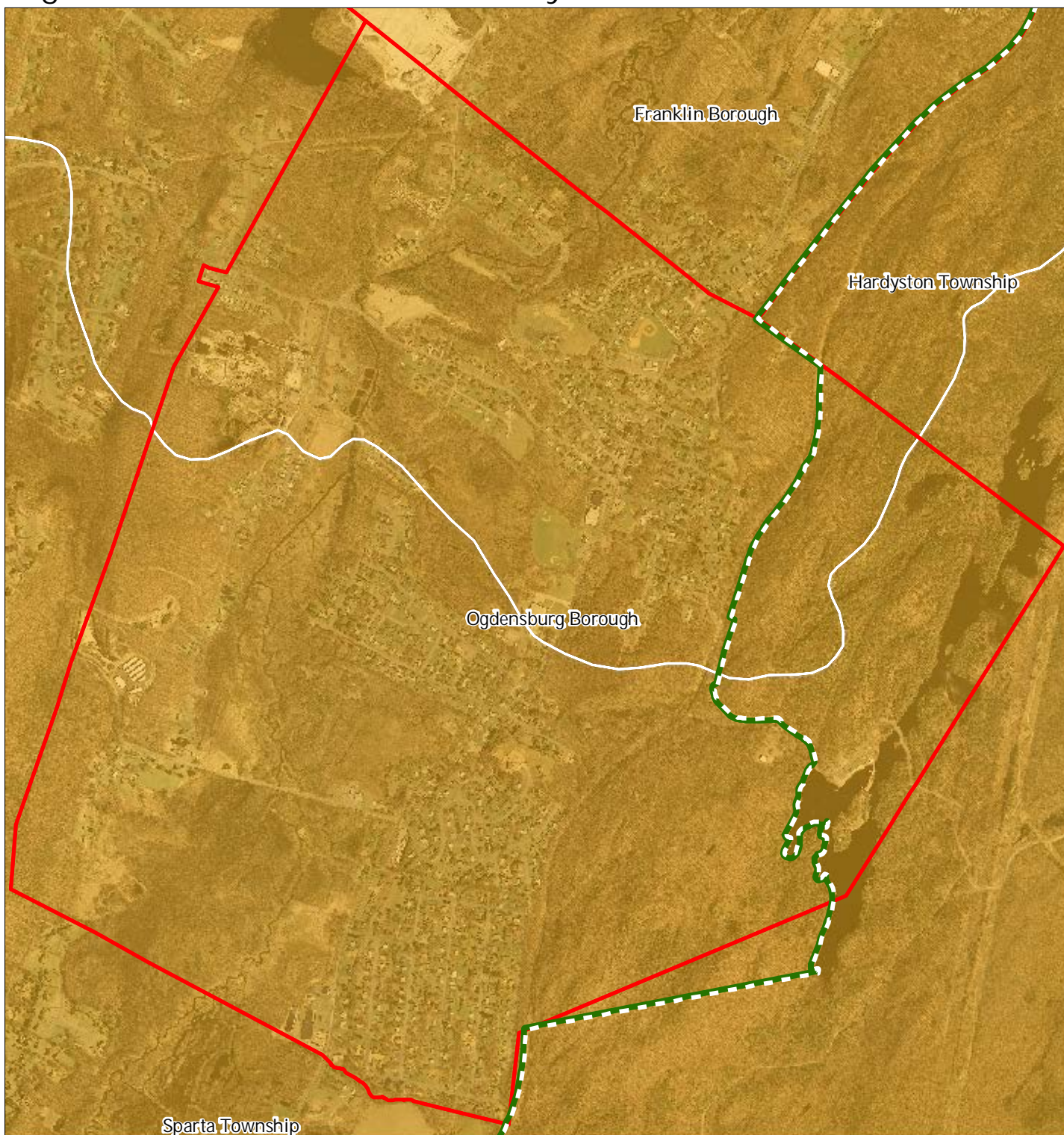
Ogdensburg Borough



1 inch = 0.244 miles



Figure 20: Net Water Availability



Net Water Availability By HUC14

Million Gallons Per Day (MGD)

0.10 - 0.39

0.05 - 0.09

0.00 - 0.04

-0.09 - 0.00

-0.99 - -0.10

-7.10 - -1.00

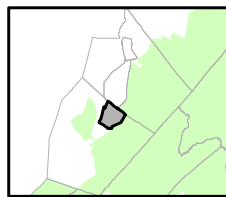
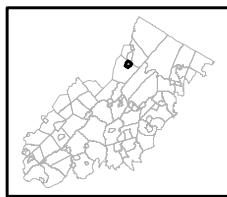


Preservation Area



Municipal Boundaries

Ogdensburg Borough

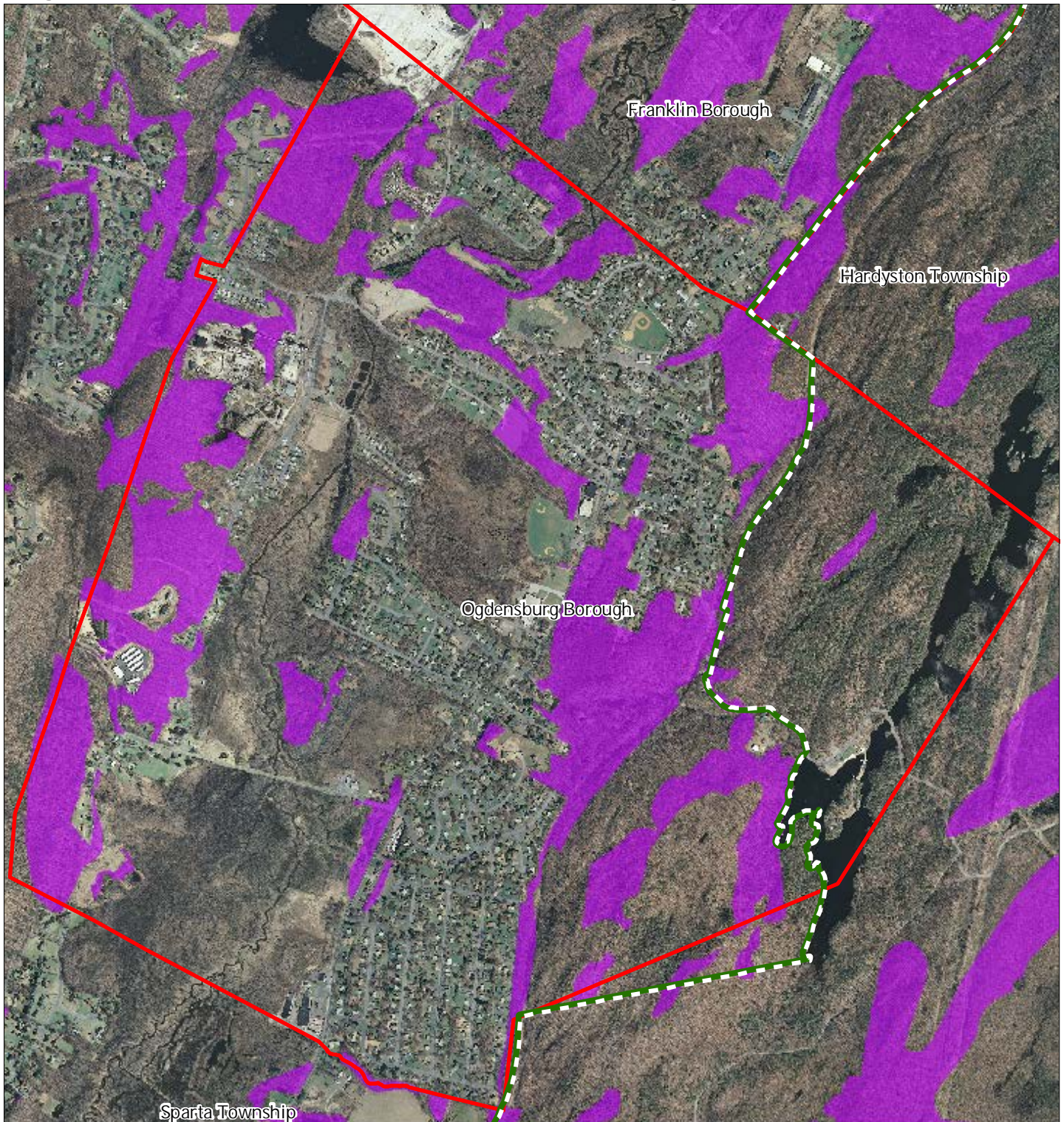


1 inch = 0.244 miles



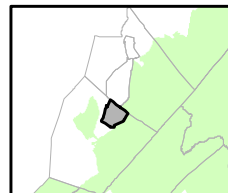
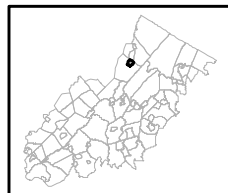
August 2011

Figure 21: Prime Ground Water Recharge Areas



- Prime Groundwater Recharge Areas
- Preservation Area
- Municipal Boundaries

Ogdensburg Borough

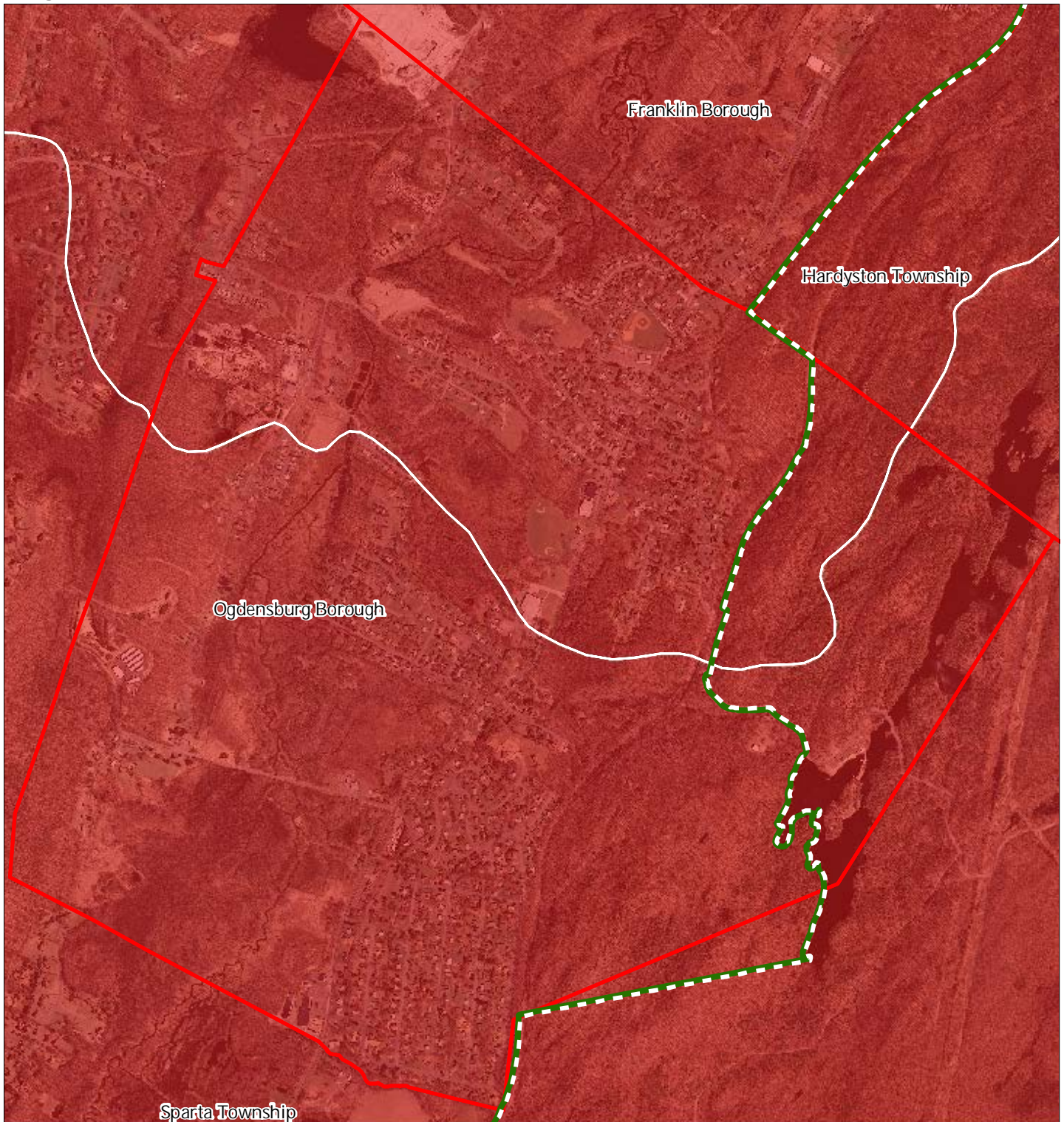


1 inch = 0.244 miles



August 2011

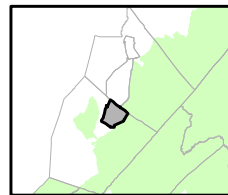
Figure 22: HUC 14s on NJDEP Impaired Waters List



Impaired Waters Overall Assessment by HUC14 Subwatershed

Ogdensburg Borough

- Non Impacted*
- Insufficient Data Available*
- Moderate*
- Water Quality Impaired*
- Preservation Area
- Municipal Boundaries



1 inch = 0.244 miles



August 2011

Figure 23: Wellhead Protection Areas



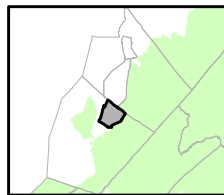
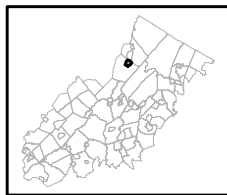
- Public Community Wells
- Public Non-Community Wells

Wellhead Protection Areas

- 2-Year Tier
- 5-Year Tier
- 12-Year Tier

- Preservation Area
- Municipal Boundaries

Ogdensburg Borough

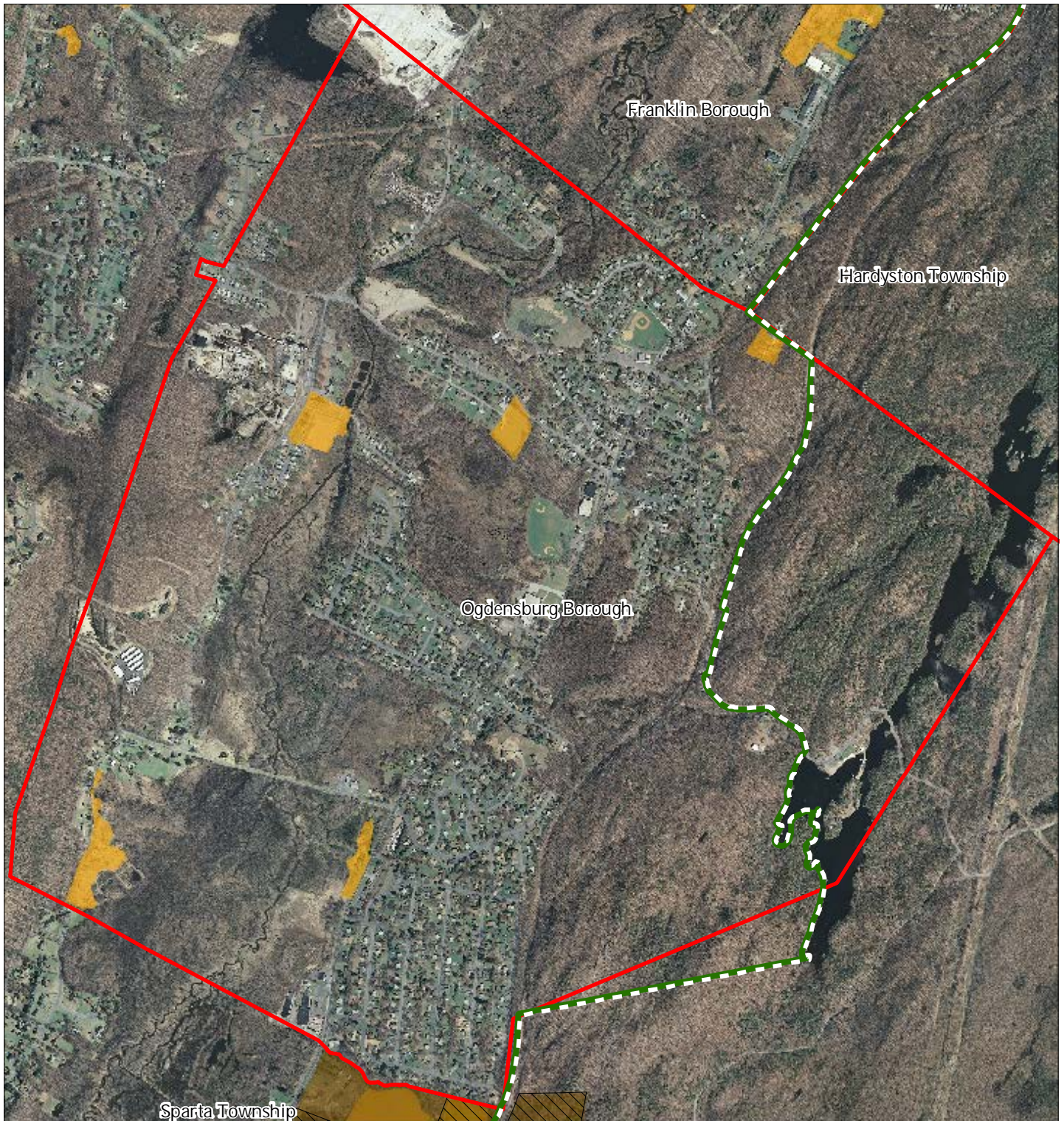


1 inch = 0.244 miles



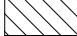




August 2011

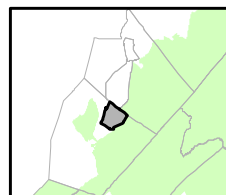
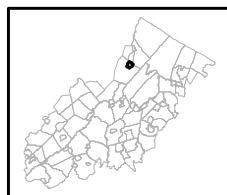
Figure 26: Preserved Farms, SADC Easements, All Agricultural Uses



SADC Easements

- |   |  |
|---|--|
|  <i>SADC Final</i>     |  Preservation Area    |
|  <i>SADC Preserved</i> |  Municipal Boundaries |
|  Preserved Farmland    |  |
|  Agriculture Uses      |  |

Ogdensburg Borough

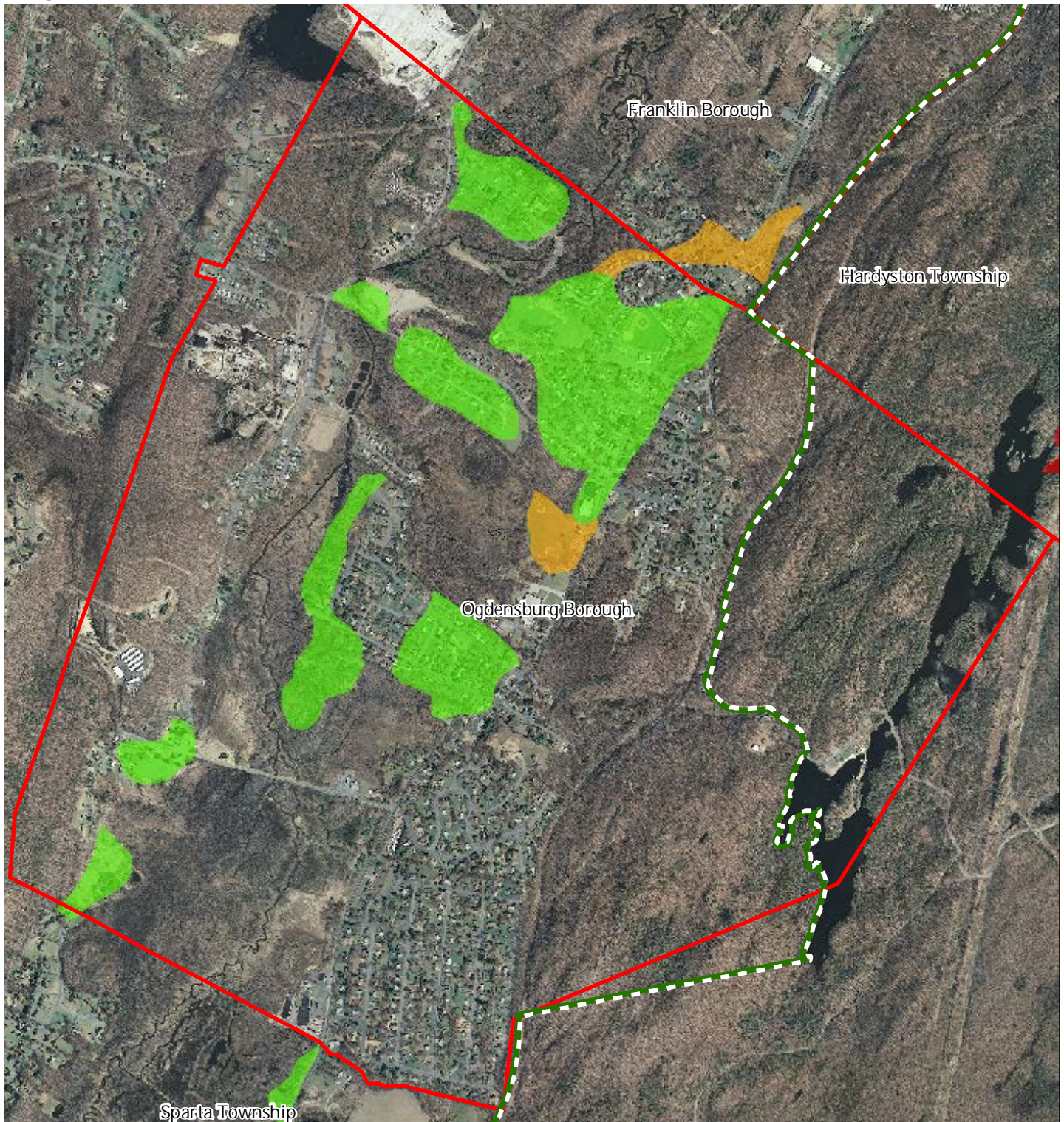


1 inch = 0.244 miles



August 2011

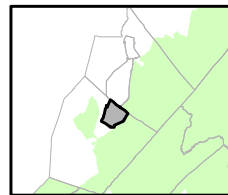
Figure 27: Important Farmland Soils



Important Farmland Soils

-  Prime Farmland
-  Farmland of Local Importance
-  Farmland of Statewide Importance
-  Farmland of Unique Importance
-  Preservation Area
-  Municipal Boundaries

Ogdensburg Borough

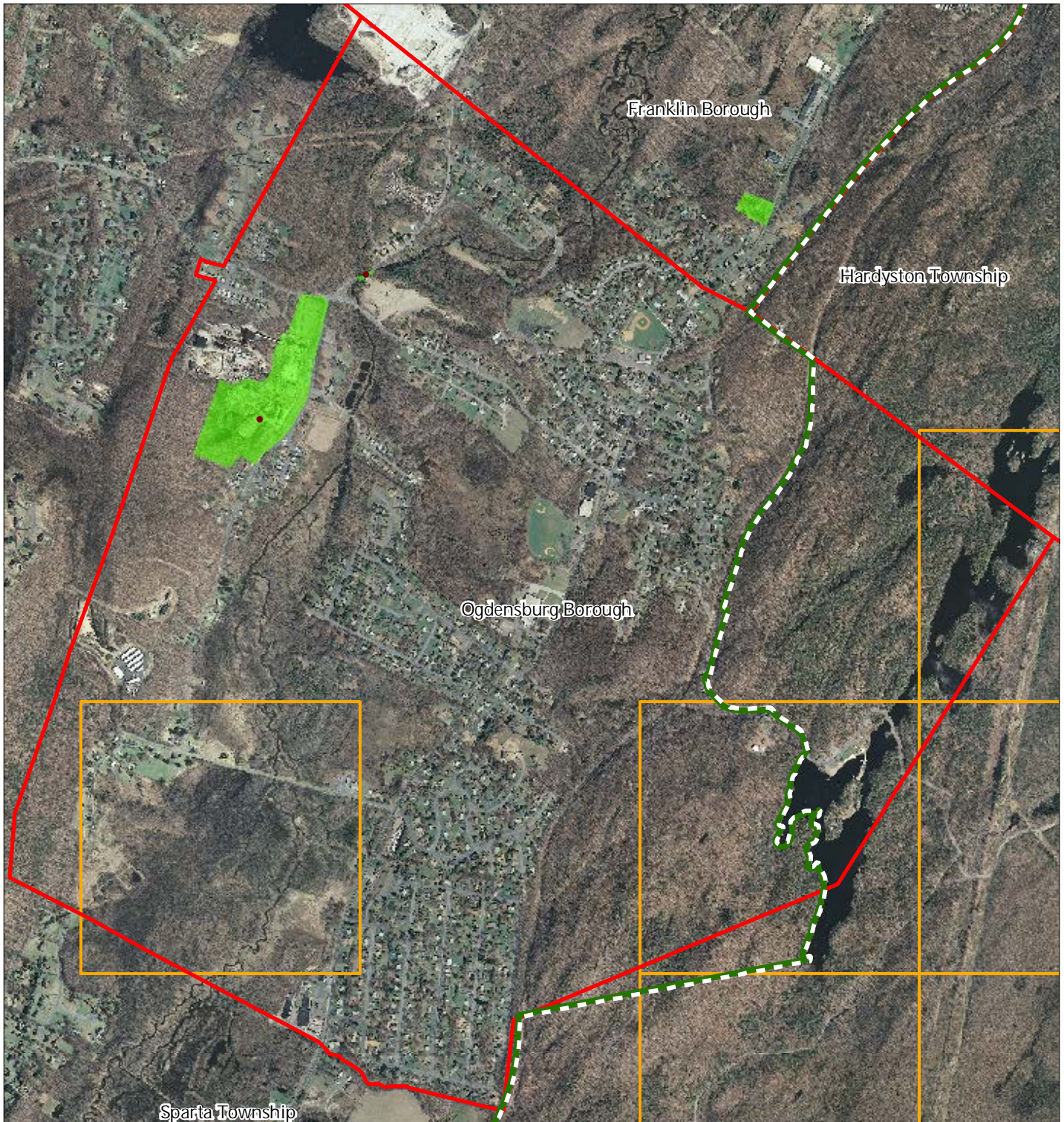


1 inch = 0.244 miles



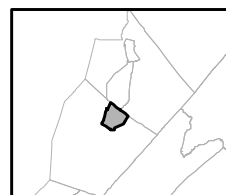
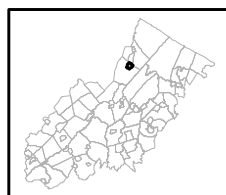
August 2011

Figure 28: Historic, Cultural, and Archaeological Resources Inventory



-  Preservation Area
-  Municipal Boundaries
-  Archaeological Grids (1 sqmi)
-  NJ Historic Districts
-  Historic Property Points
-  Historic Property Polygons

Ogdensburg Borough

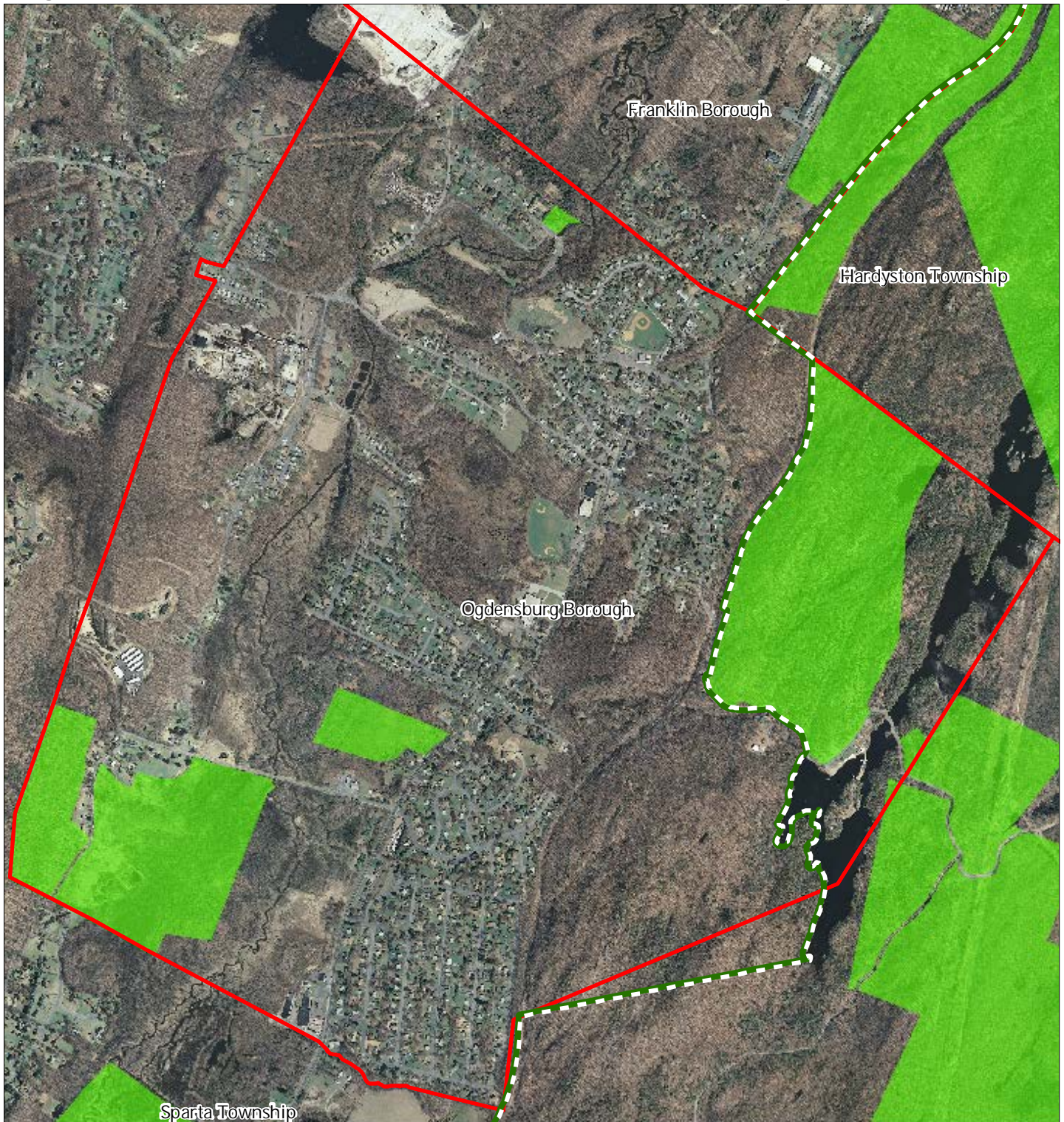


1 inch = 0.244 miles






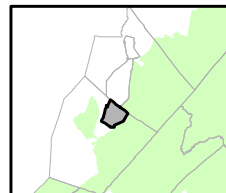
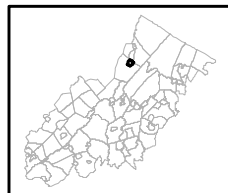
August 2011

Figure 29: Baseline Scenic Resources Inventory



## Ogdensburg Borough

-  Scenic Resources
-  Municipal Boundaries
-  Preservation Area

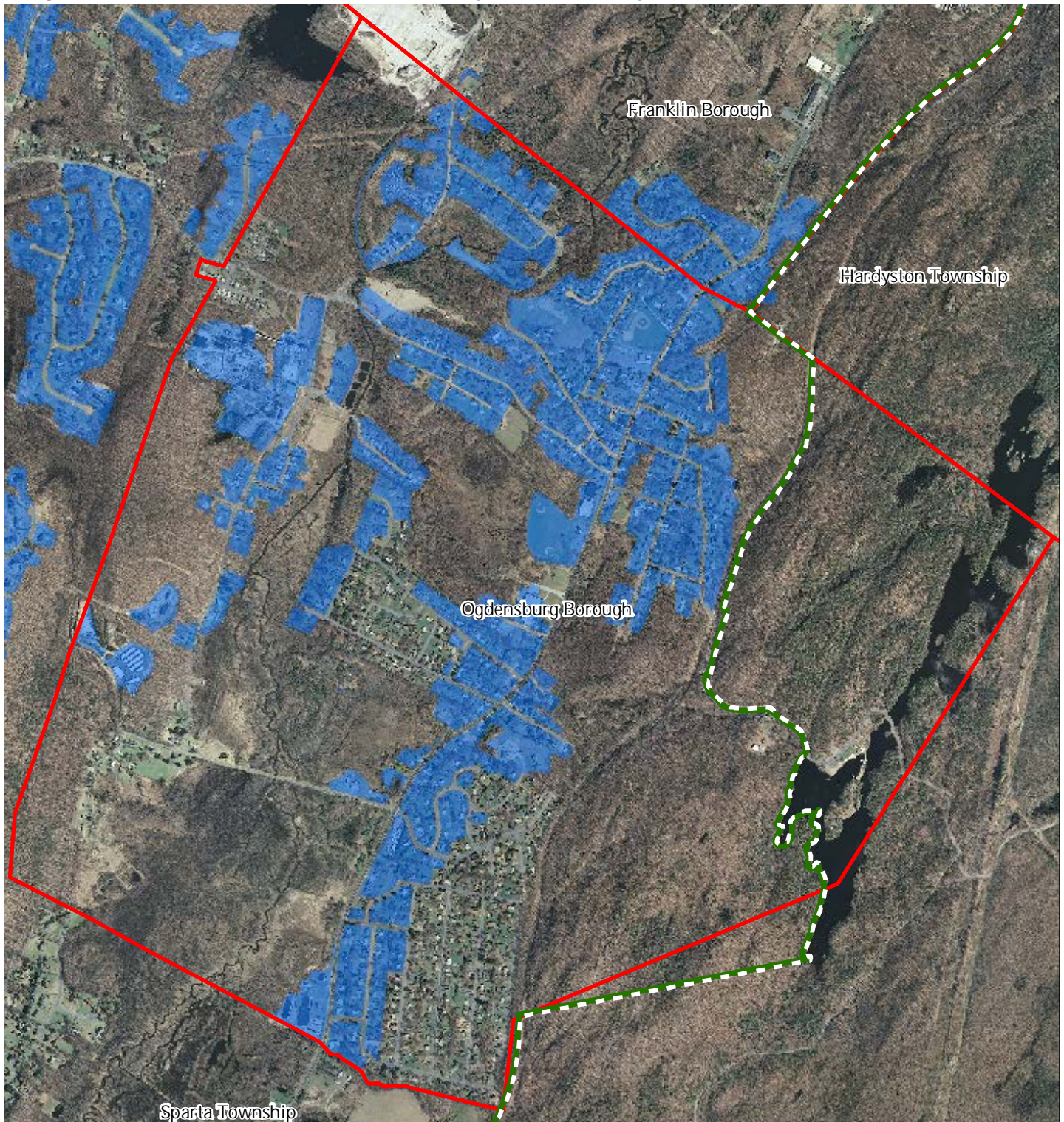





1 inch = 0.244 miles



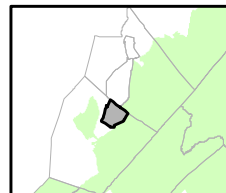
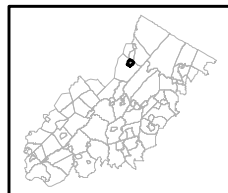
August 2011

Figure 31: Public Community Water Systems



-  Public Community Water Systems
-  Preservation Area
-  Municipal Boundaries

Ogdensburg Borough

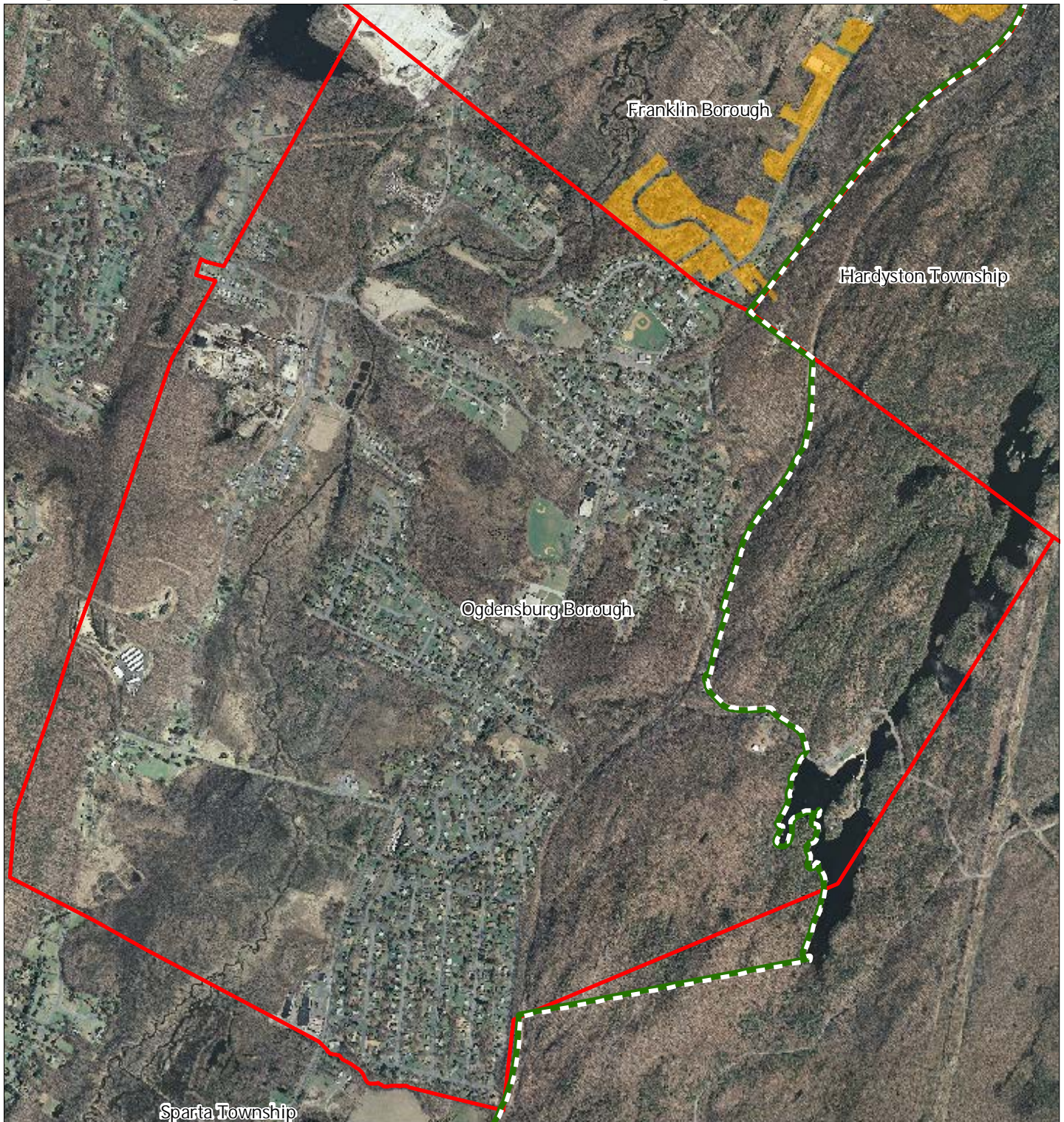


1 inch = 0.244 miles






August 2011

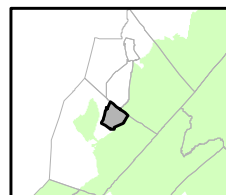
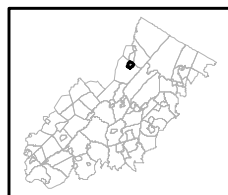
Figure 32: Highlands Domestic Sewerage Facilities



Highlands Domestic Sewerage Facilities

-  Existing Area Served
-  Preservation Area
-  Municipal Boundaries

Ogdensburg Borough

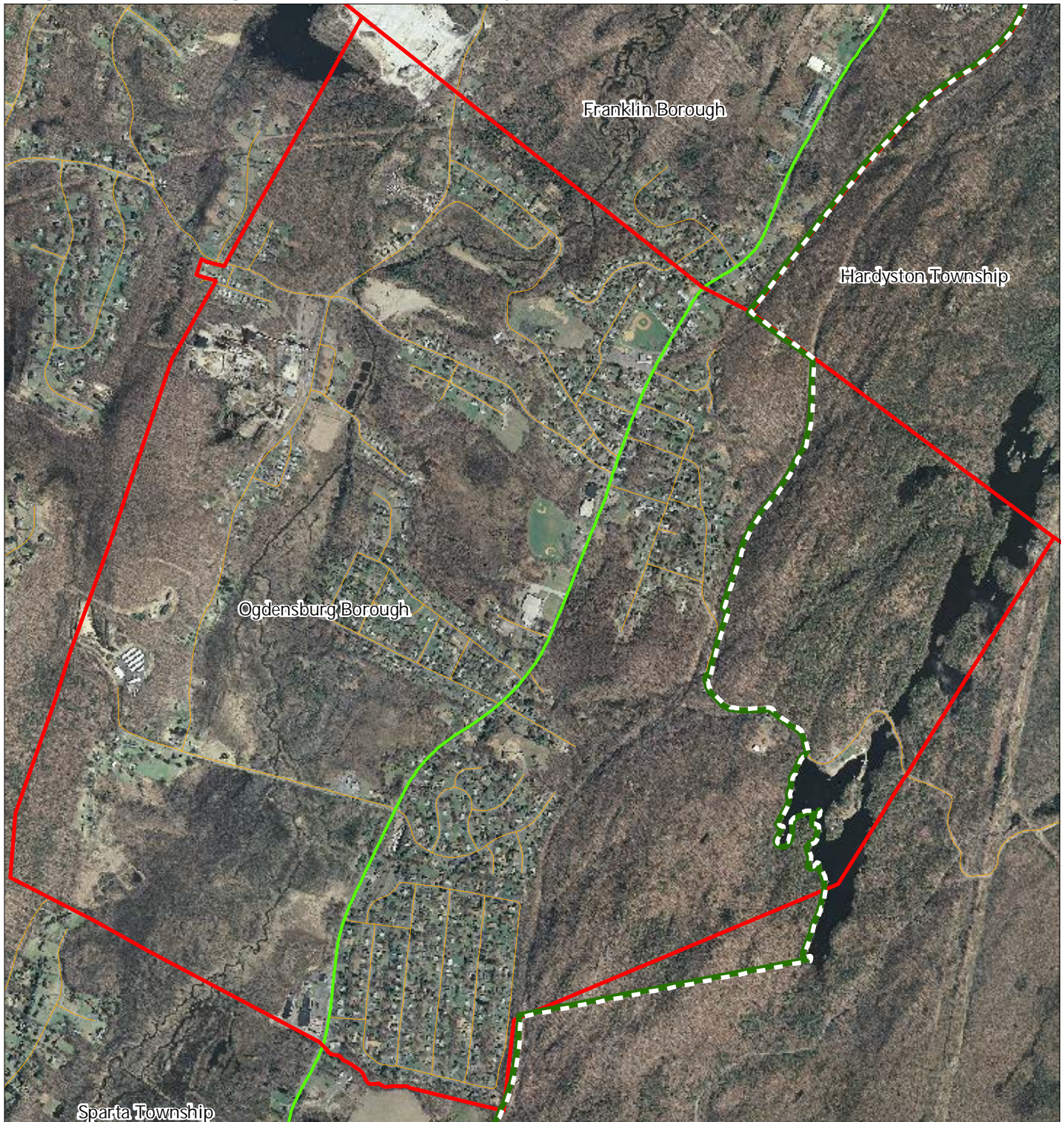


1 inch = 0.244 miles



August 2011

Figure 33: Highlands Roadway Network



Roadway Network



 Interstate Highways

 U.S. Routes

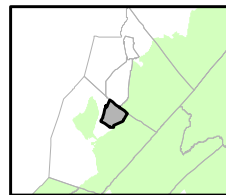
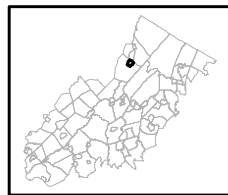
 State Routes

 County Routes

 Local Routes

 Preservation Area  
 Municipal Boundaries

Ogdensburg Borough



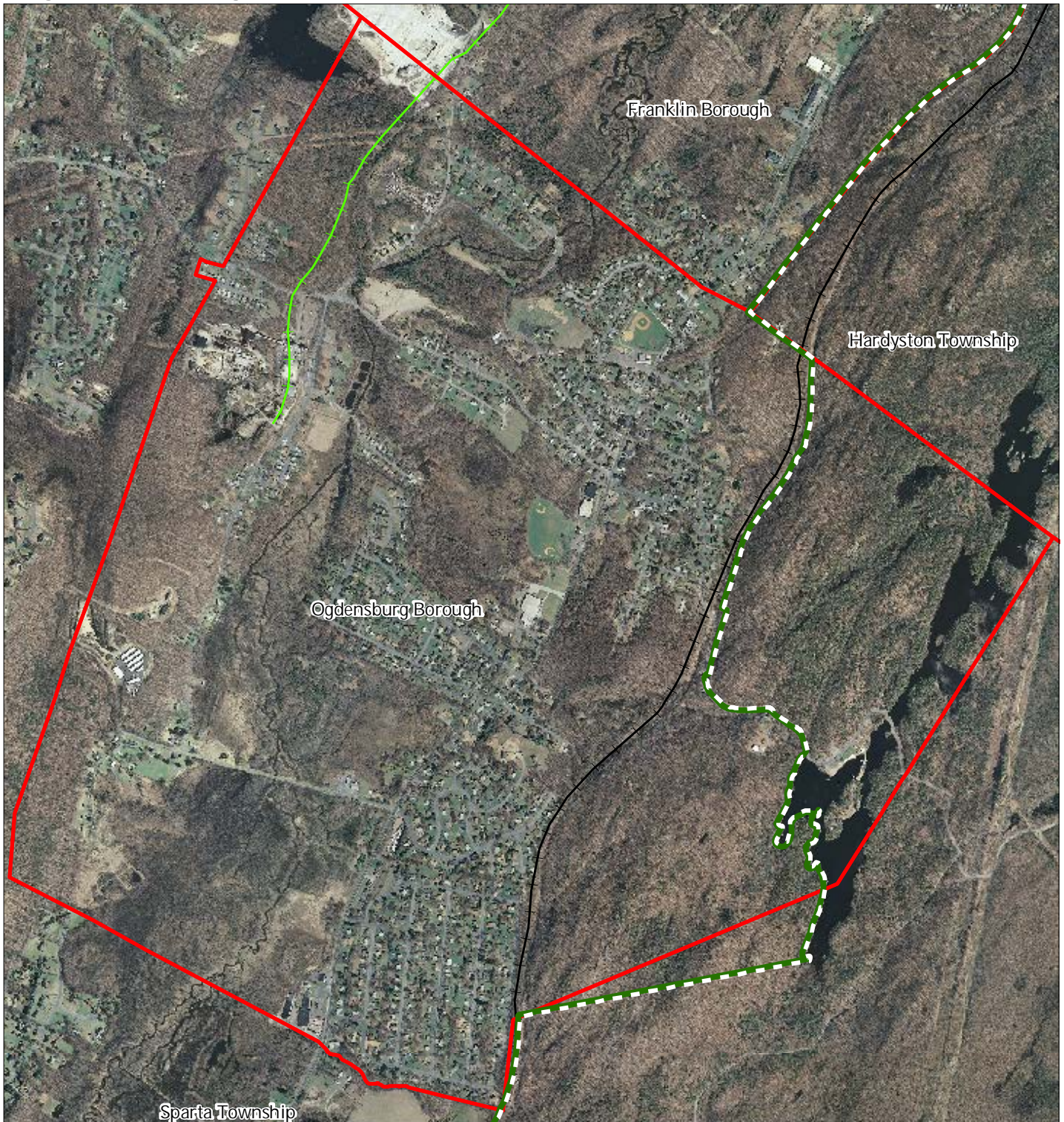
1 inch = 0.244 miles





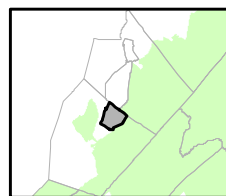
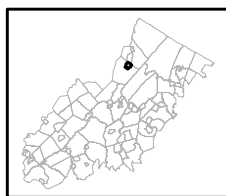
August 2011

Figure 34: Highlands Transit Network



- Rail Network**
- *Boonton Line*
  - *Main Line & Bergen County Line*
  - *Morris and Essex Line*
  - *Raritan Valley Line*
- Freight Rail Lines**
- *Freight Rail Lines*
  - *Abandoned Freight Rail*
- Rail Stations
  - Park and Ride Sites
  - Private Bus Lines
  - NJ Transit Bus Lines
  - ✈ Airports

Ogdensburg Borough



1 inch = 0.244 miles



August 2011