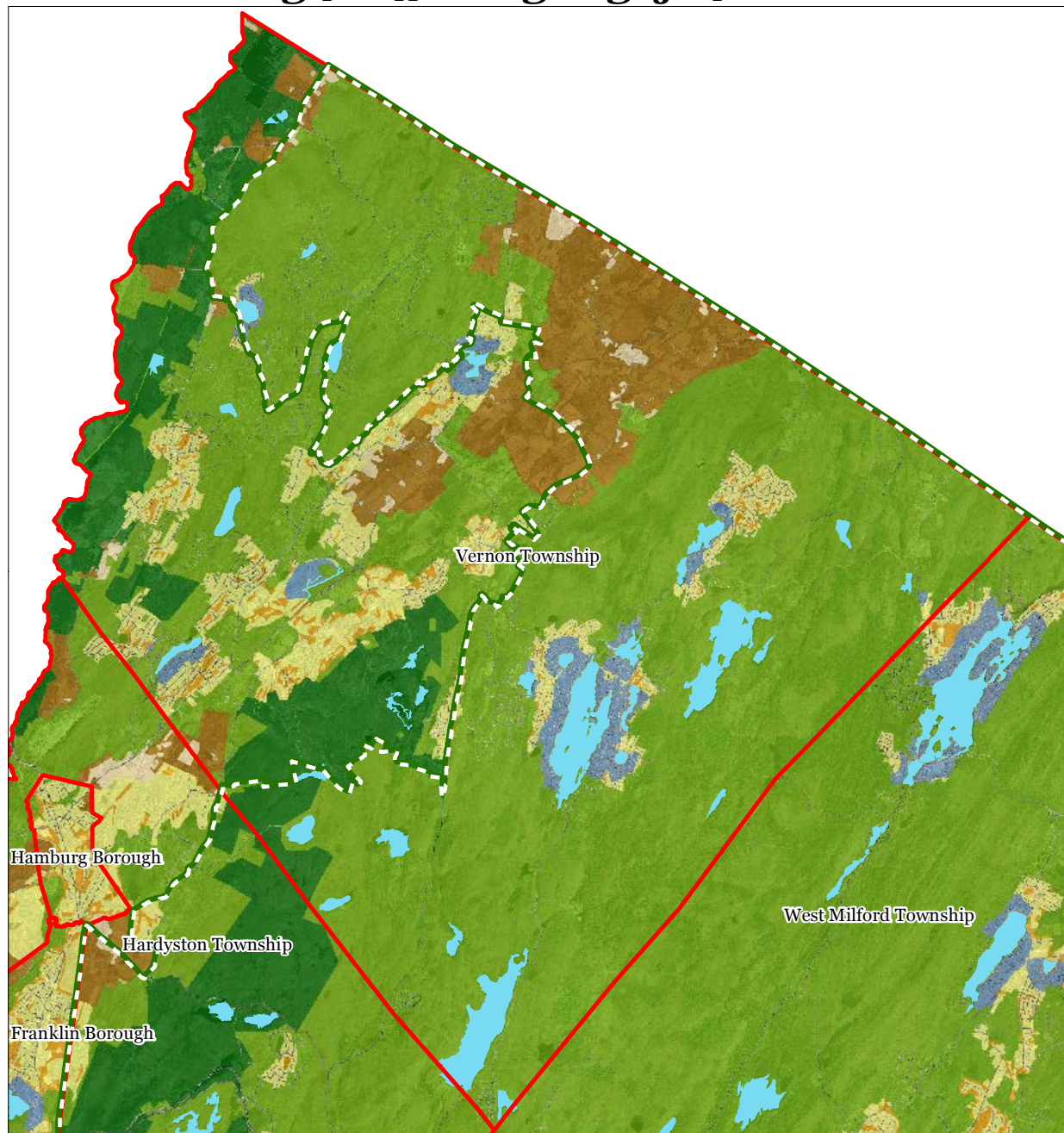


Exhibit A: Highlands Preservation Area Master Plan Element



Regional Master Plan Overlay Zone Designation

- | | |
|--|-----------------------------|
| Zone | |
| Protection | Lakes Greater Than 10 acres |
| Conservation | Preservation Area |
| Existing Community | Municipal Boundaries |
| Sub-Zone | |
| Existing Community Environmentally Constrained | |
| Conservation Environmentally Constrained | |
| Lake Community | |
| Wildlife Management | |

Vernon Township



1 inch = 1.48 miles



Exhibit B: Township Land Use Inventory, July 2010

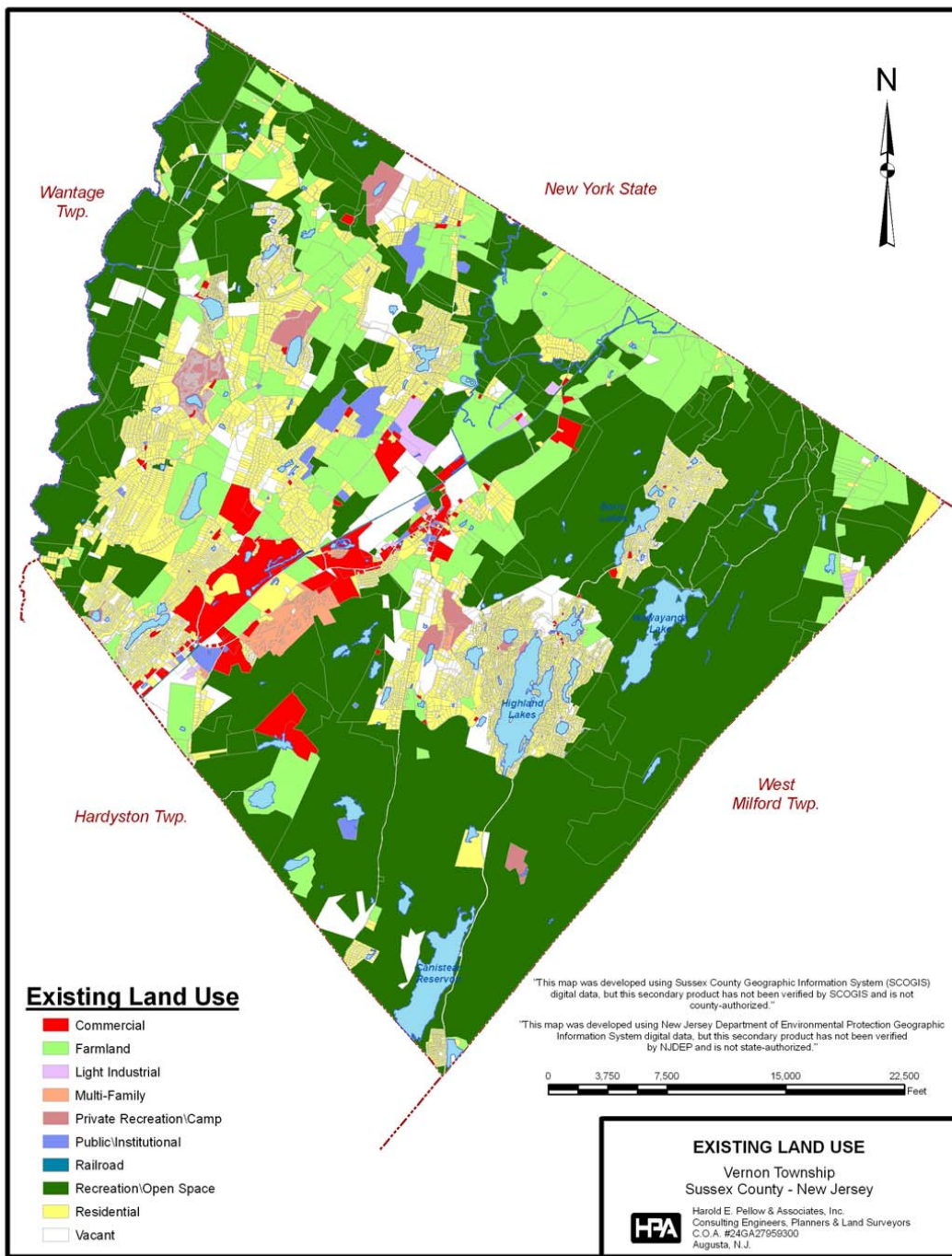
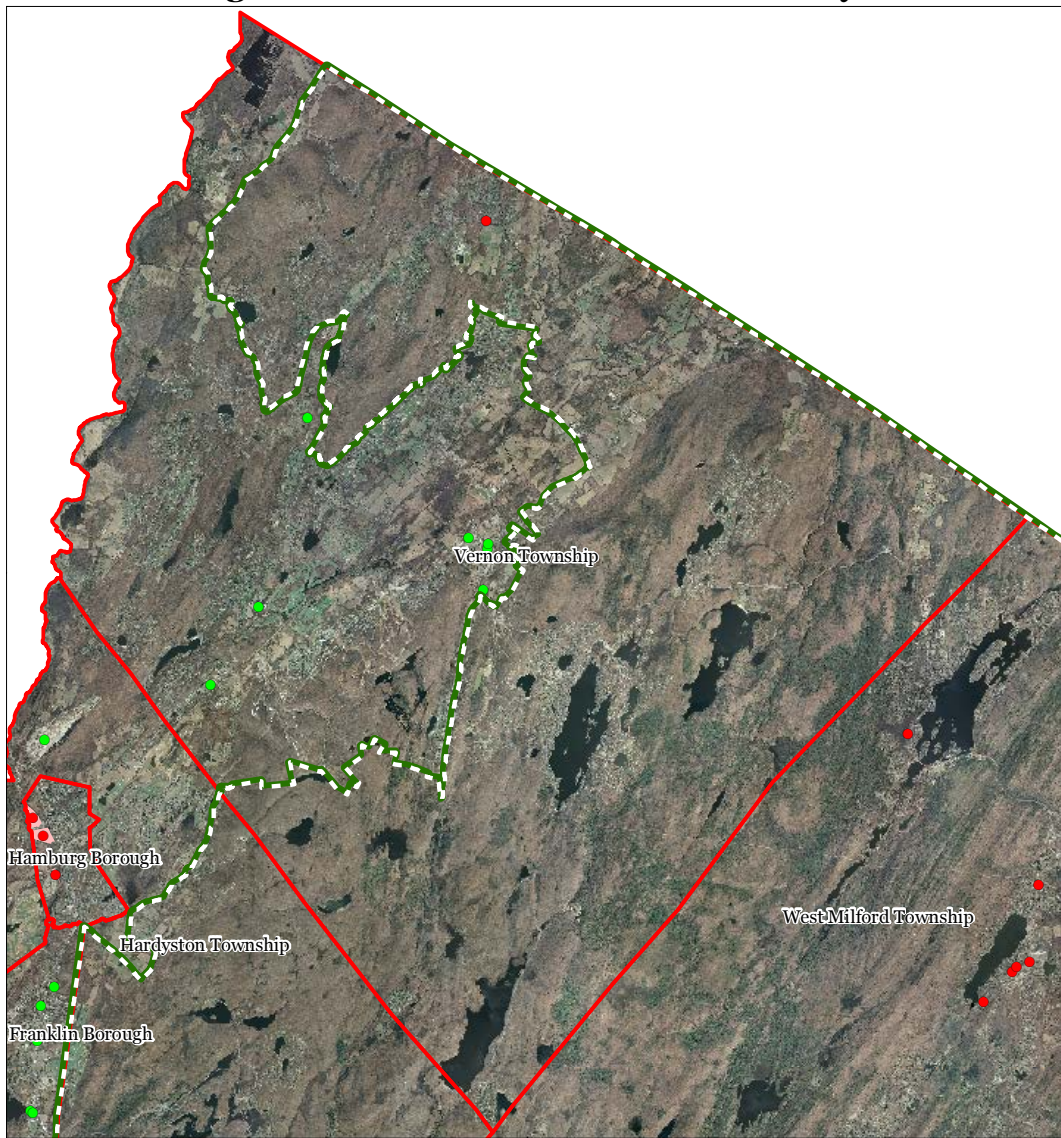


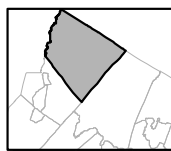
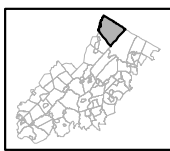
Exhibit C: Highlands Contaminated Site Inventory



Highlands Contaminated Site Inventory

- Tier 1 Sites
- Tier 1 Sites (Polygons)
- Tier 2 Sites
- ▭ Preservation Area
- ▭ Municipal Boundaries

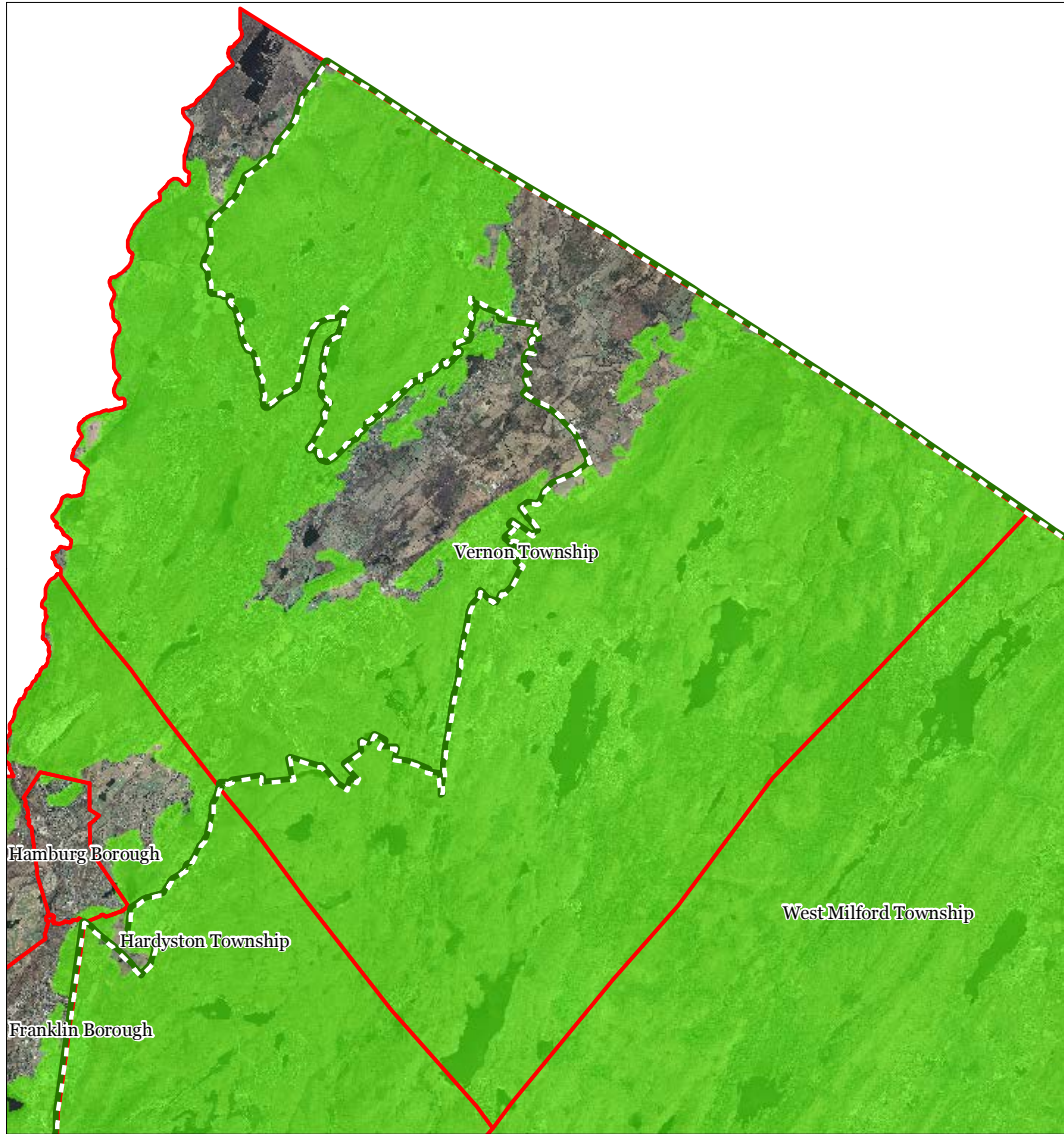
Vernon Township






1 inch = 1.48 miles

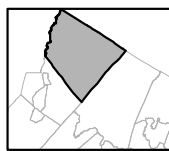
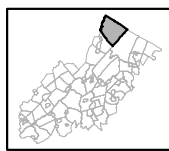


Exhibit E: Forest Resource Area



-  Forest Resource Area
-  Preservation Area
-  Municipal Boundaries

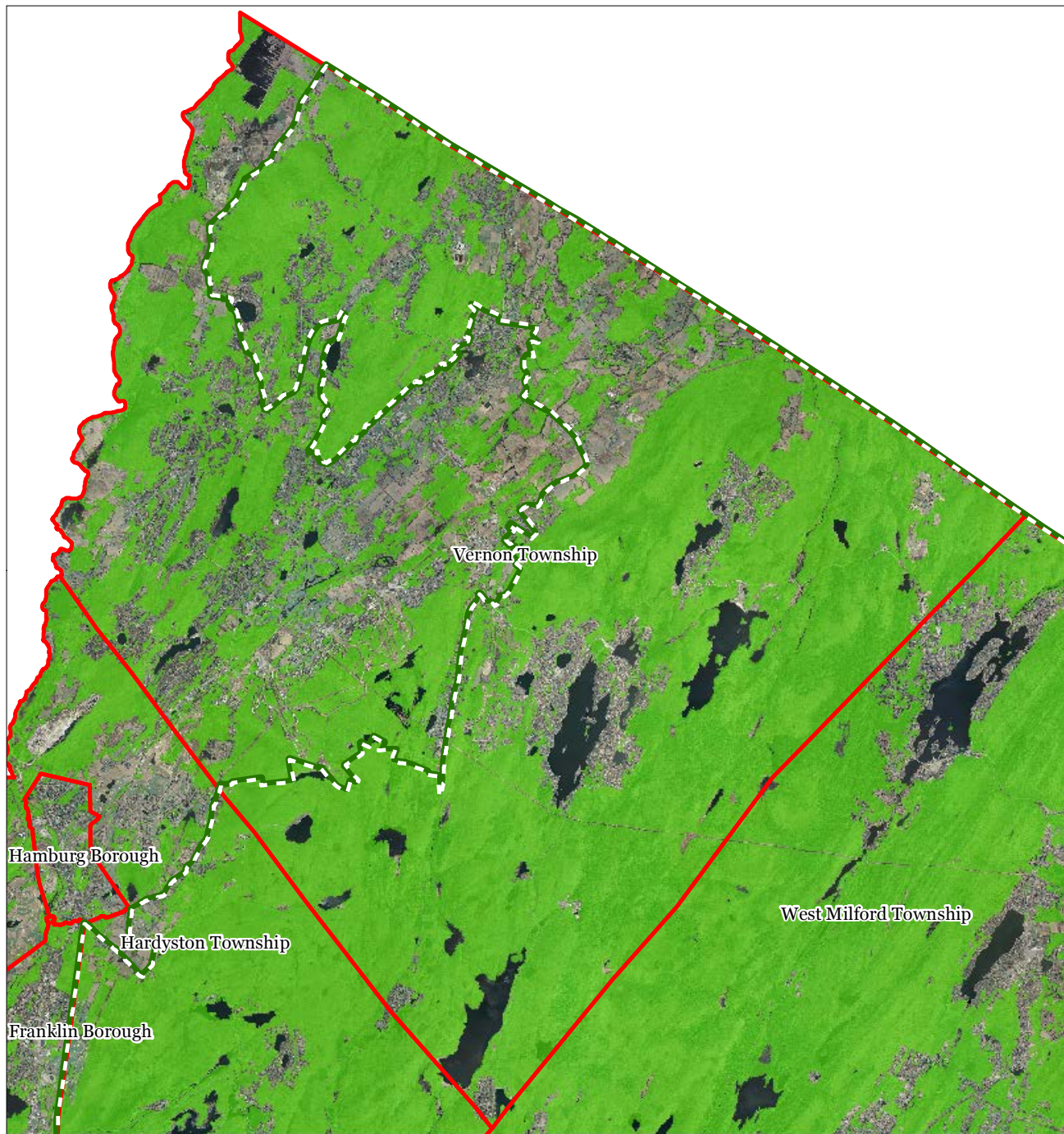
Vernon Township






1 inch = 1.48 miles

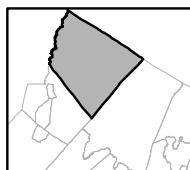
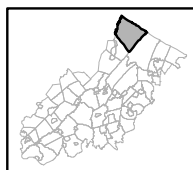


Exhibit F: Total Forest Area



-  Forested Areas
-  Preservation Area
-  Municipal Boundaries

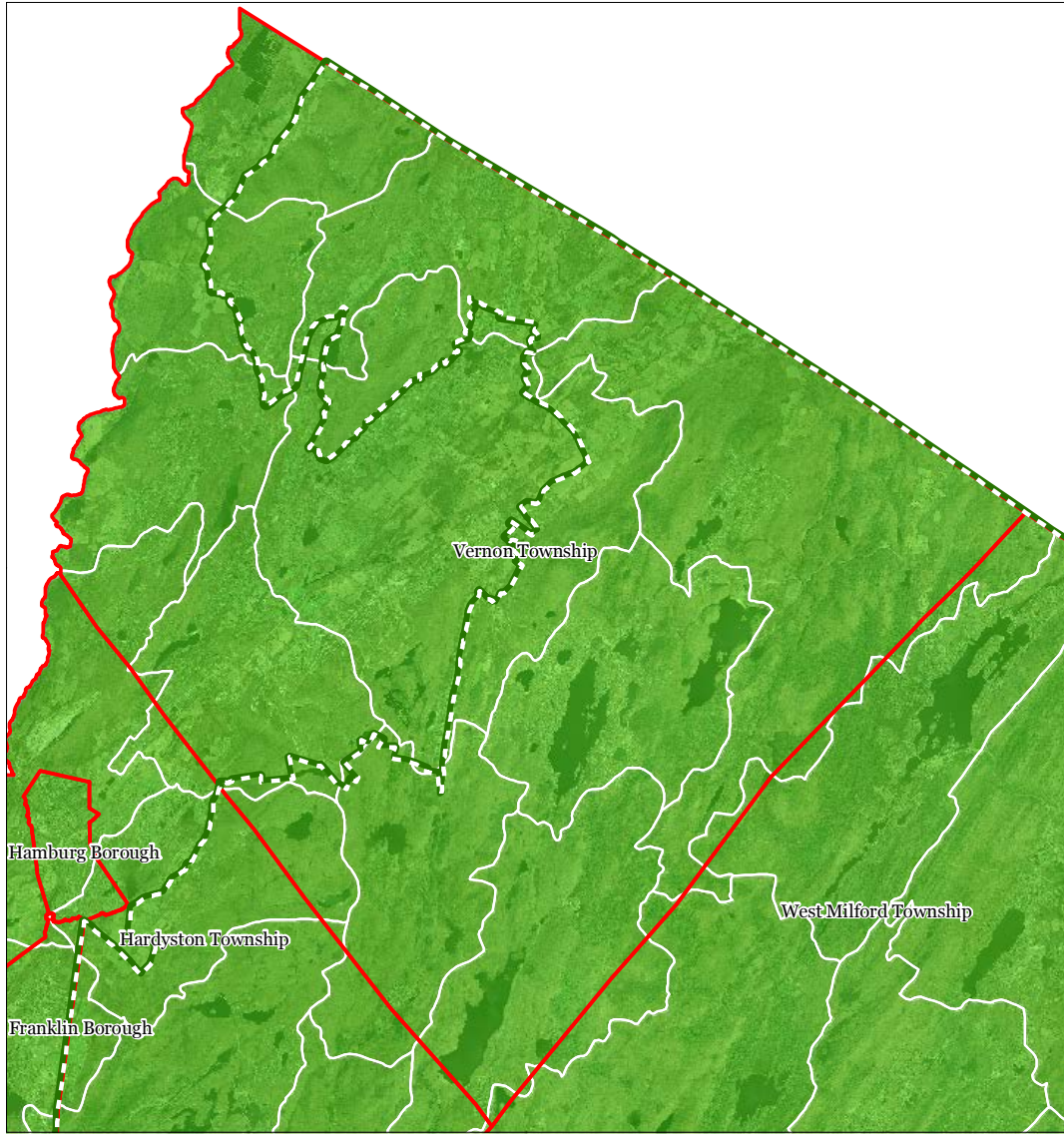
Vernon Township








1 inch = 1.48 miles



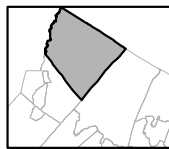
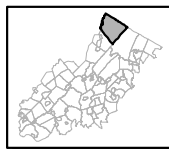
Exhibit G: Forest Subwatersheds



Forest Integrity by HUC14 Subwatershed

-  *Low*
-  *Moderate*
-  *High*
-  Preservation Area
-  Municipal Boundaries

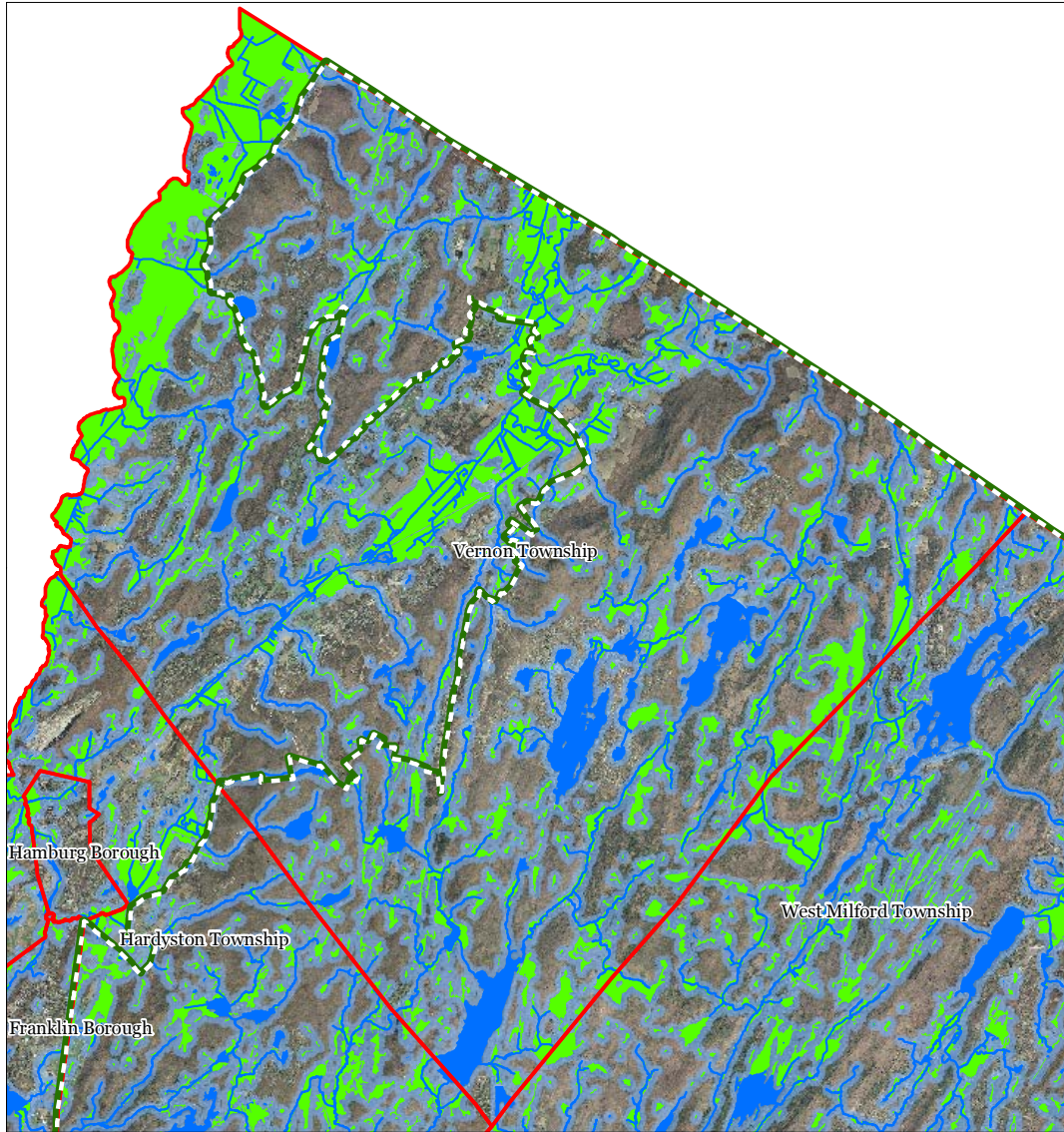
Vernon Township



1 inch = 1.48 miles

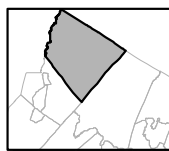
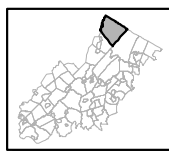


Exhibit H: Highlands Open Waters



- Highlands Open Water Buffers (300ft)
- Streams
- Wetlands
- Lakes & Ponds
- Preservation Area
- Municipal Boundaries

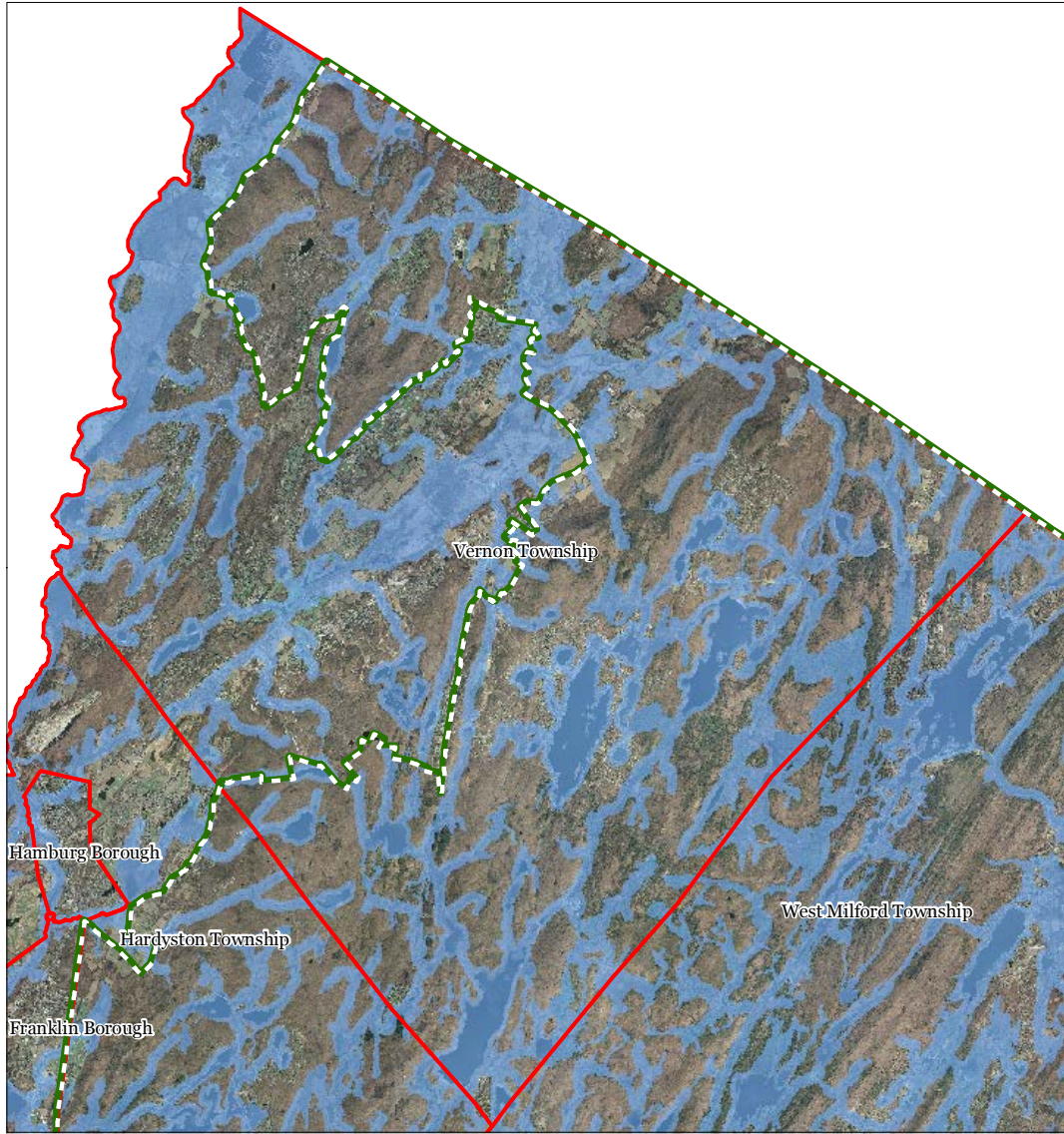
Vernon Township



1 inch = 1.48 miles

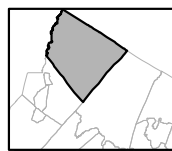
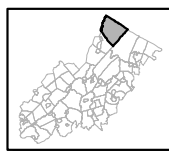


Exhibit I: Highlands Riparian Areas



- Riparian Area
- Preservation Area
- Municipal Boundaries

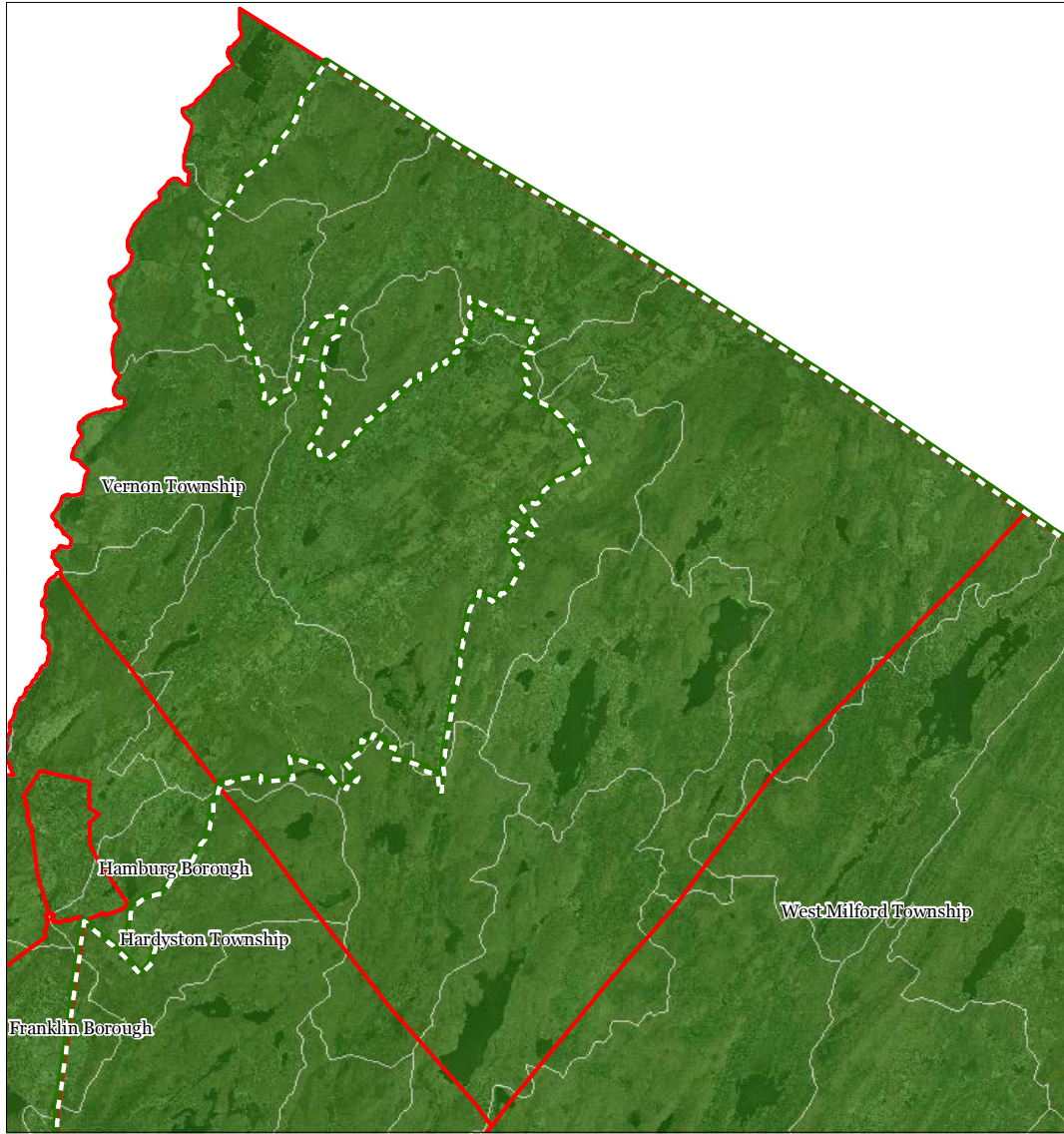
Vernon Township



1 inch = 1.48 miles



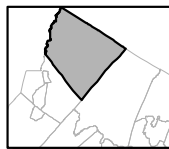
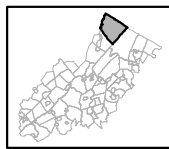
Exhibit J: Watershed Values



Watershed Values by HUC14 Subwatershed

-  *Low*
-  *Moderate*
-  *High*
-  Preservation Area
-  Municipal Boundaries

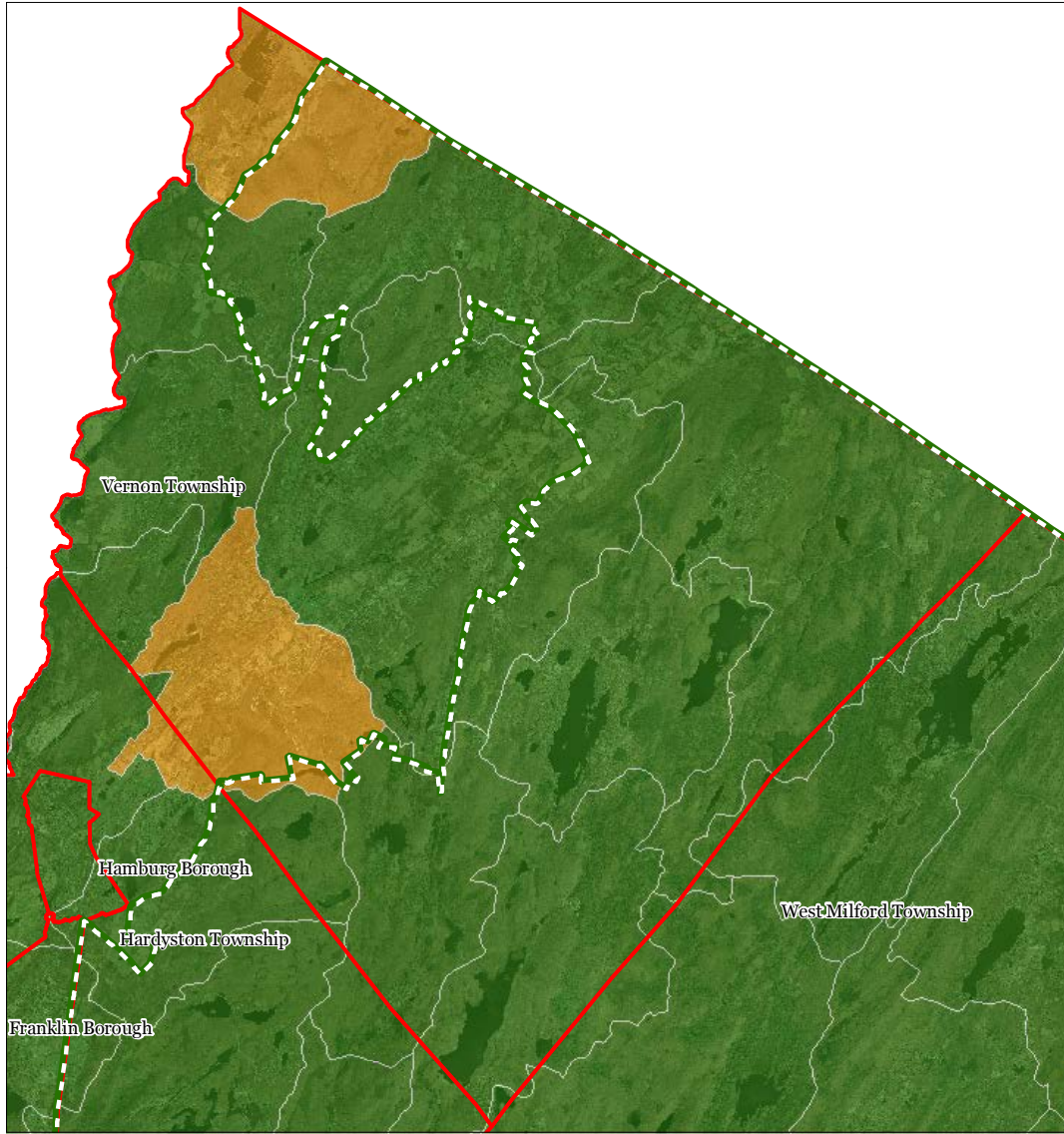
Vernon Township








1 inch = 1.48 miles



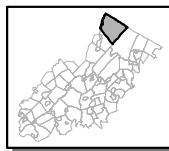
Exhibit K: Riparian Integrity



Riparian Integrity by HUC14 Subwatershed

-  Low
-  Moderate
-  High
-  Preservation Area
-  Municipal Boundaries

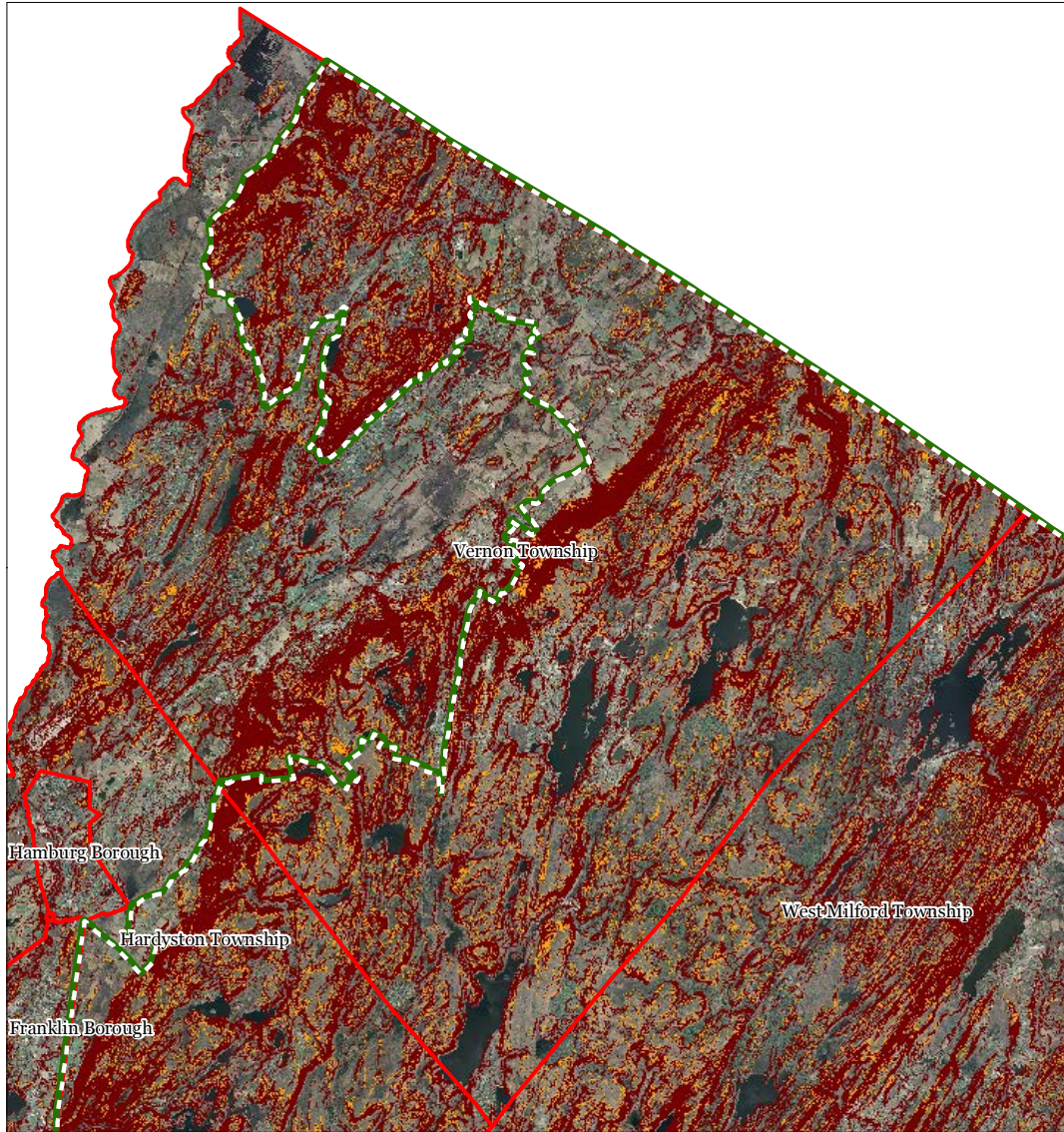
Vernon Township







1 inch = 1.48 miles

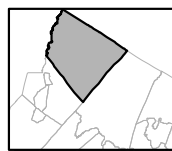
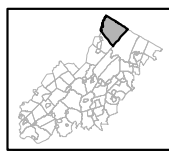


Exhibit L: Steep Slope Protection Areas



- Steep Slope
-  Moderate
 -  Severe
 -  Preservation Area
 -  Municipal Boundaries

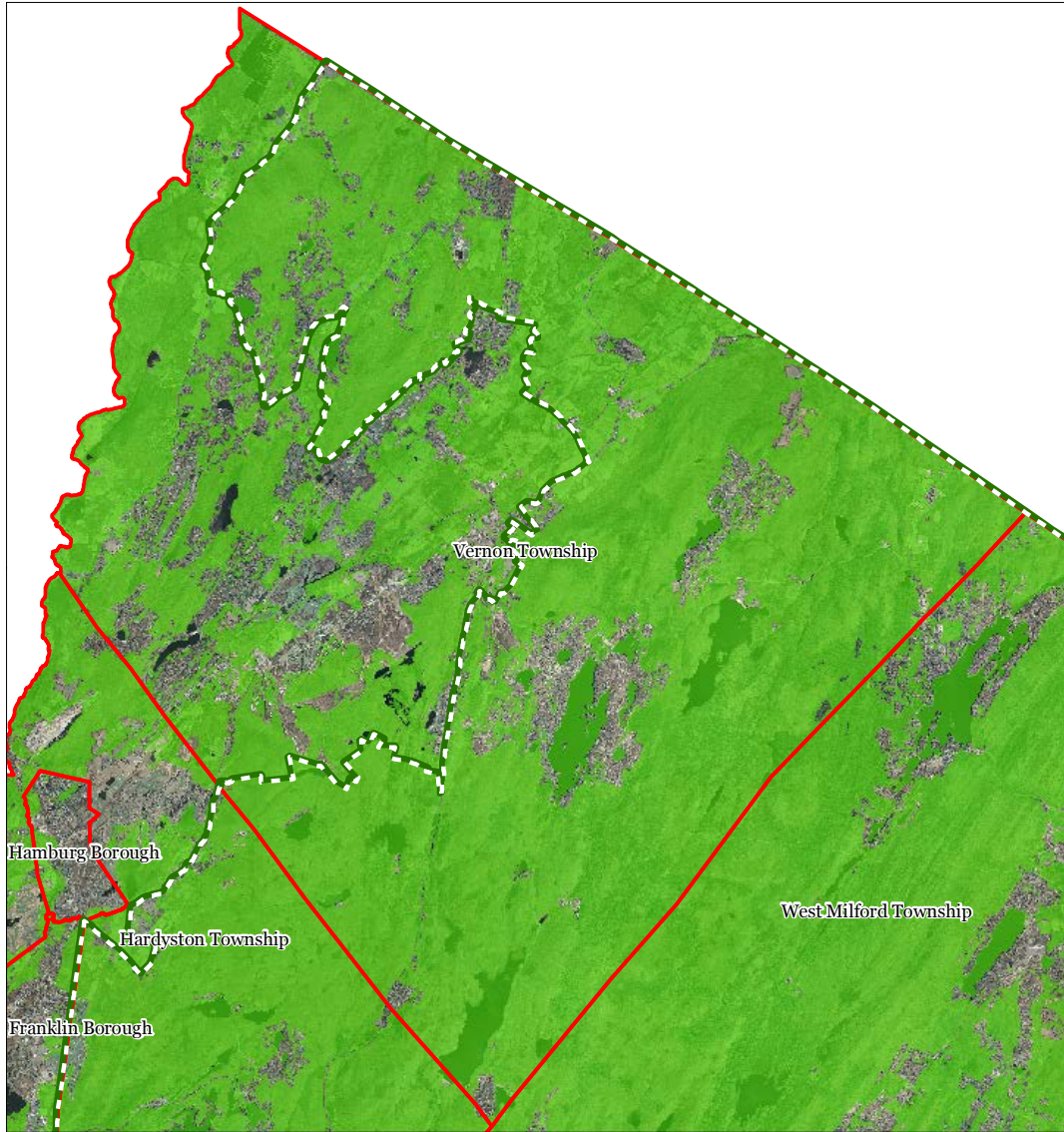
Vernon Township






1 inch = 1.48 miles

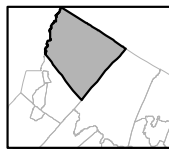
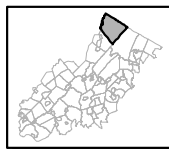


Exhibit M: Critical Wildlife Habitat



-  Critical Wildlife Habitat
-  Preservation Area
-  Municipal Boundaries

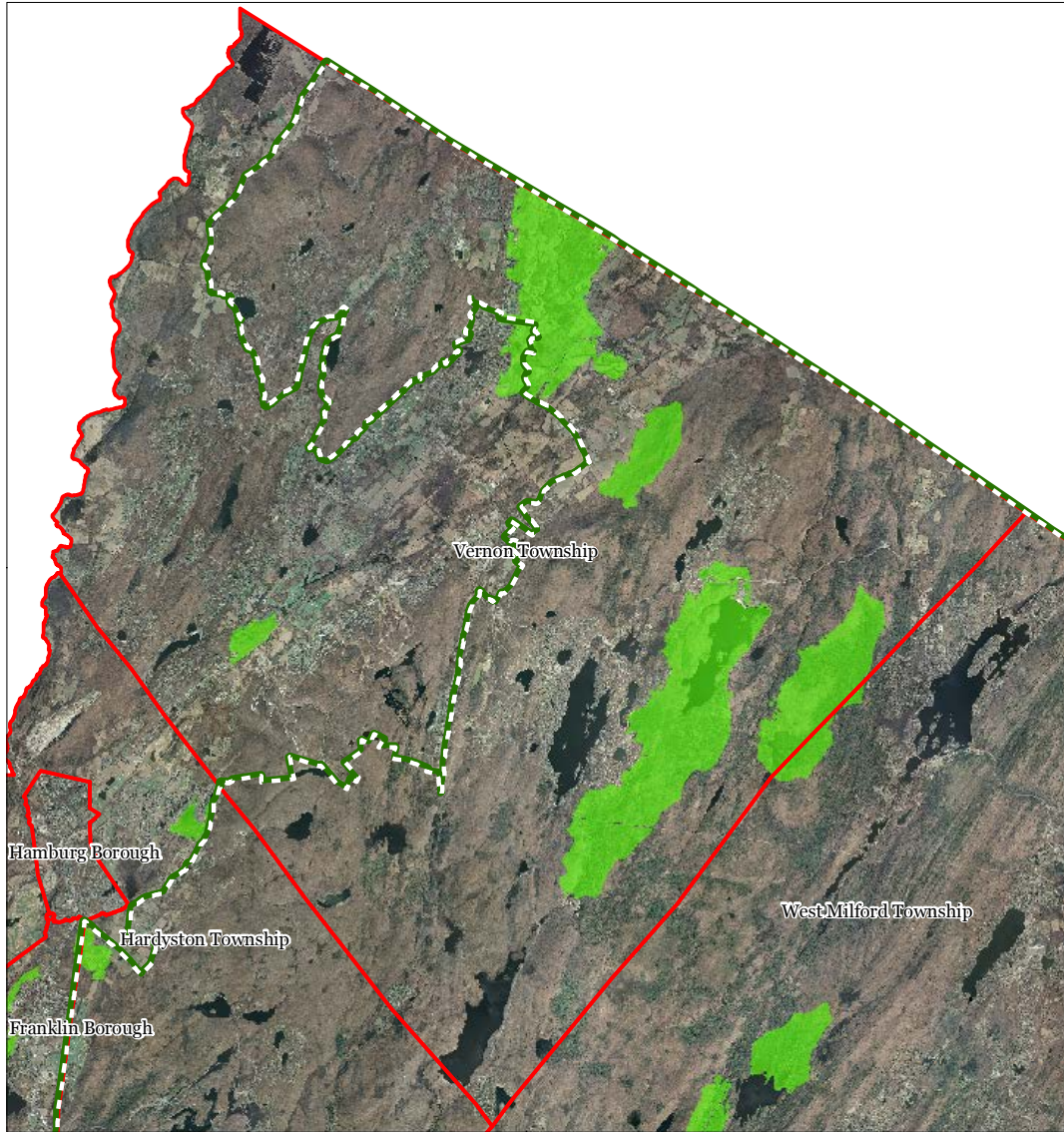
Vernon Township






1 inch = 1.48 miles

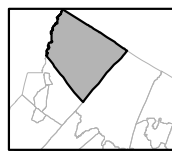
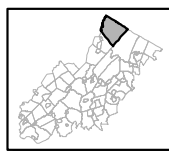


Exhibit N: Significant Natural Areas



-  Significant Natural Area
-  Preservation Area
-  Municipal Boundaries

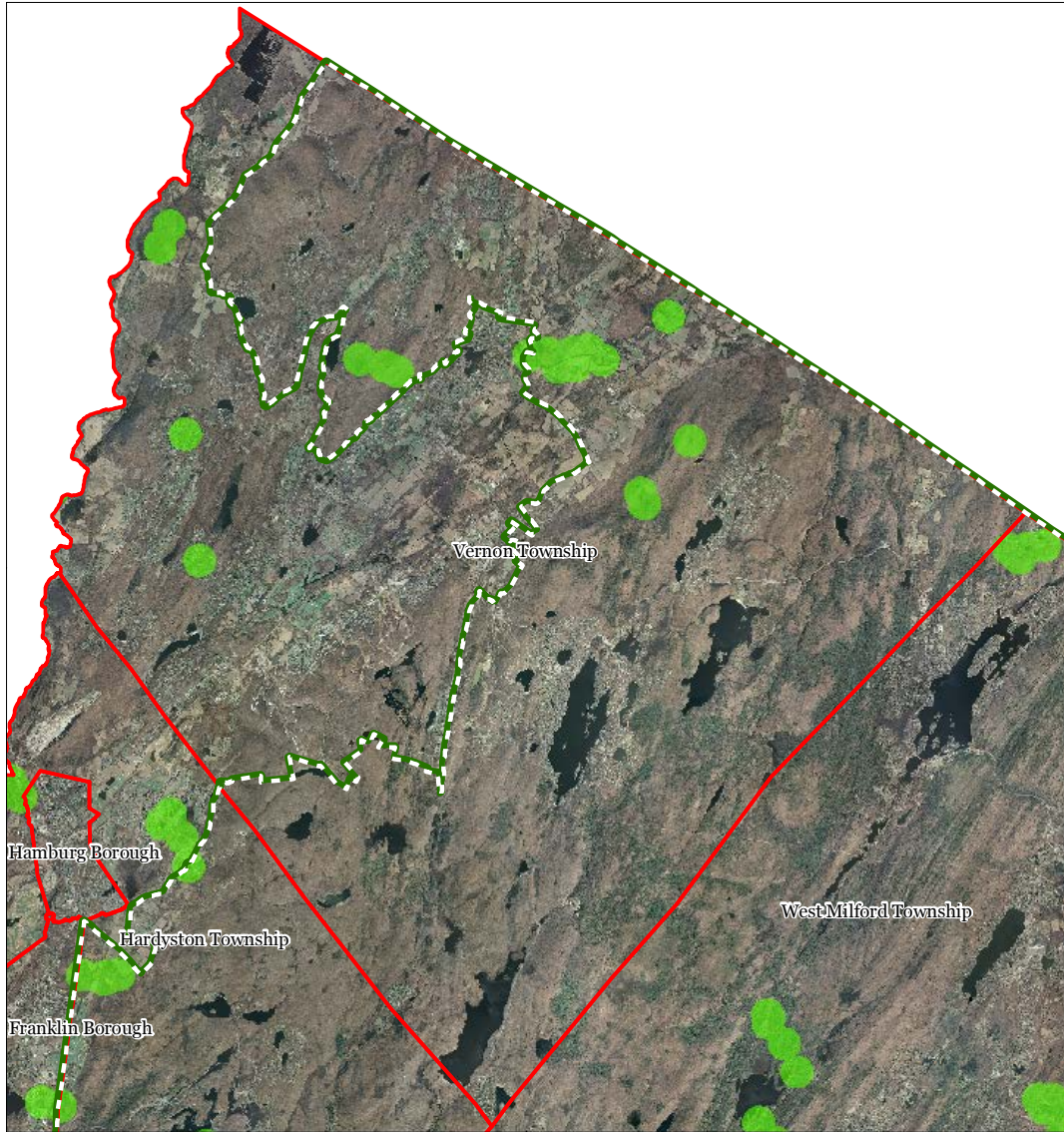
Vernon Township






1 inch = 1.48 miles

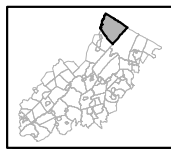


Exhibit O: Vernal Pools



-  Vernal Pools + 1000ft Buffer
-  Preservation Area
-  Municipal Boundaries

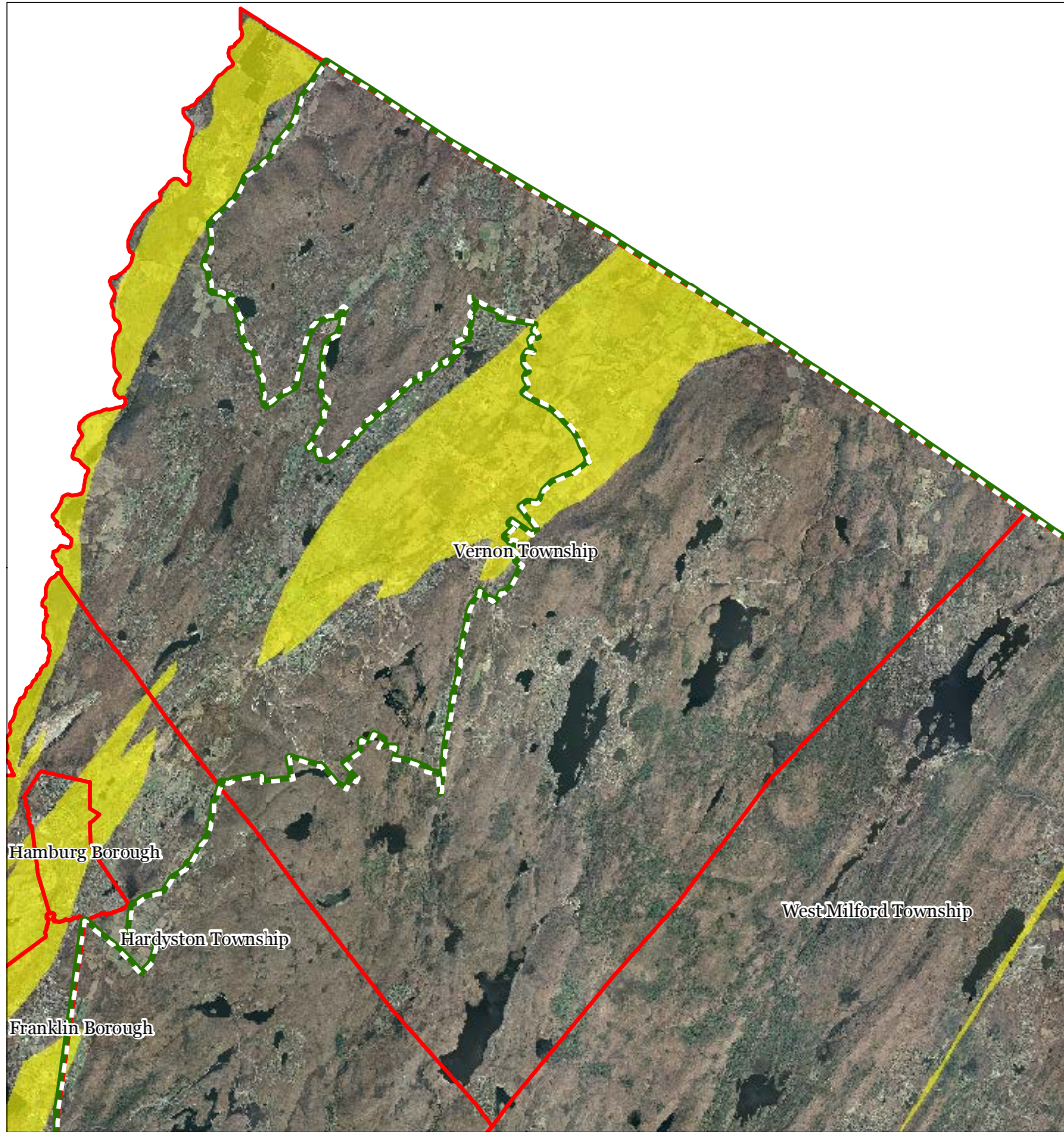
Vernon Township






1 inch = 1.48 miles

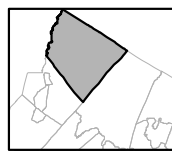
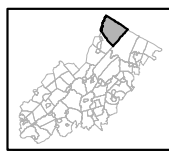


Exhibit P: Carbonate Rock Areas



-  Carbonate Rock Area
-  Preservation Area
-  Municipal Boundaries

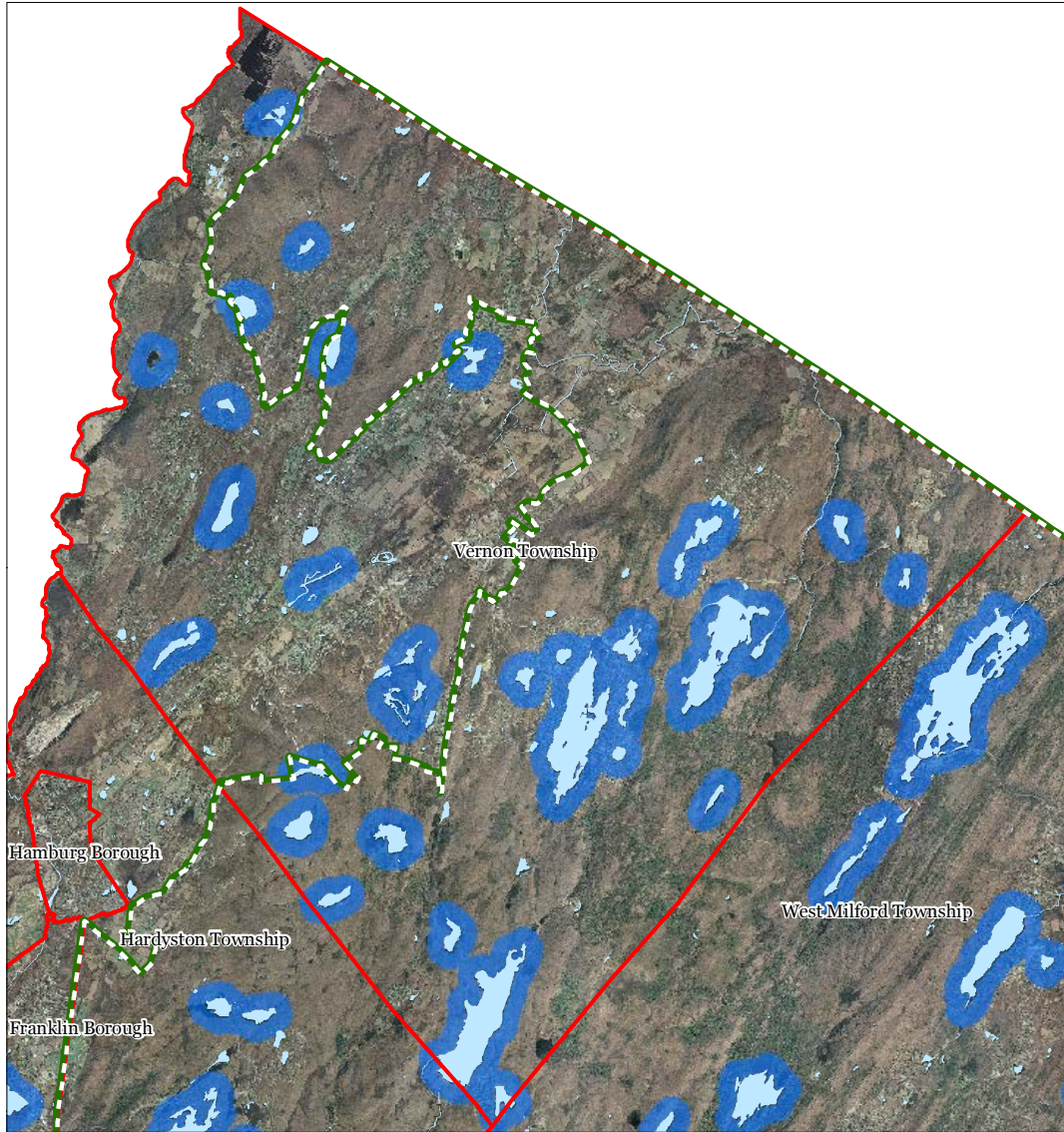
Vernon Township



1 inch = 1.48 miles

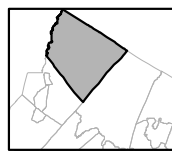
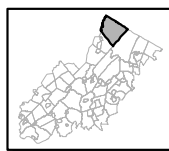


Exhibit Q: Lake Management Area



- Lakes & Ponds
- Lake Management Area
- Preservation Area
- Municipal Boundaries

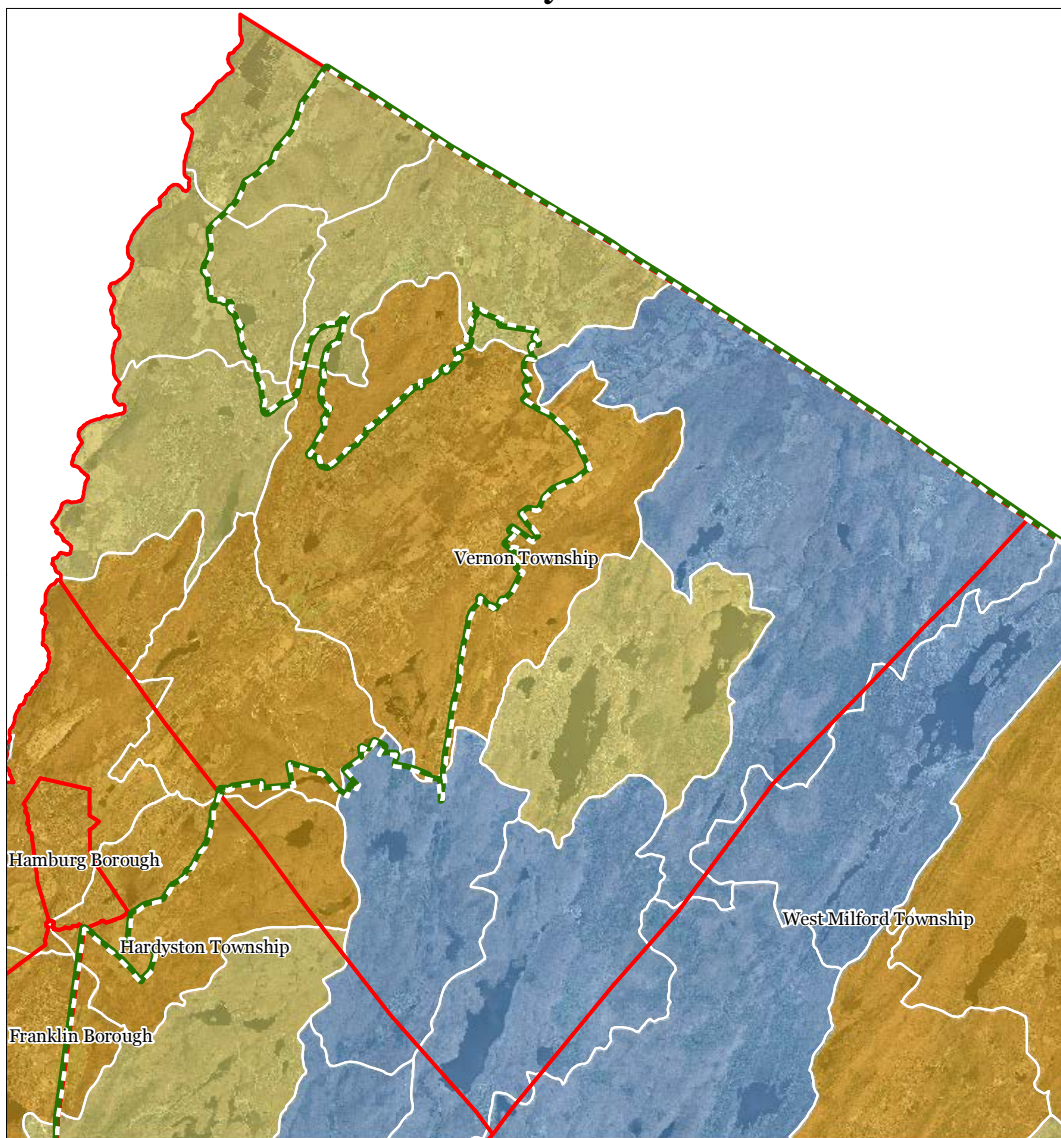
Vernon Township



1 inch = 1.48 miles



Exhibit R: Net Water Availability

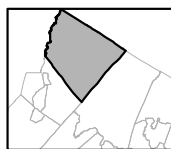
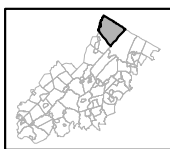


Net Water Availability By HUC14
 Million Gallons Per Day (MGD)

- 0.10 - 0.39
- 0.05 - 0.09
- 0.00 - 0.04
- 0.09 - 0.00
- 0.99 - -0.10
- 7.10 - -1.00

- Preservation Area
- Municipal Boundaries

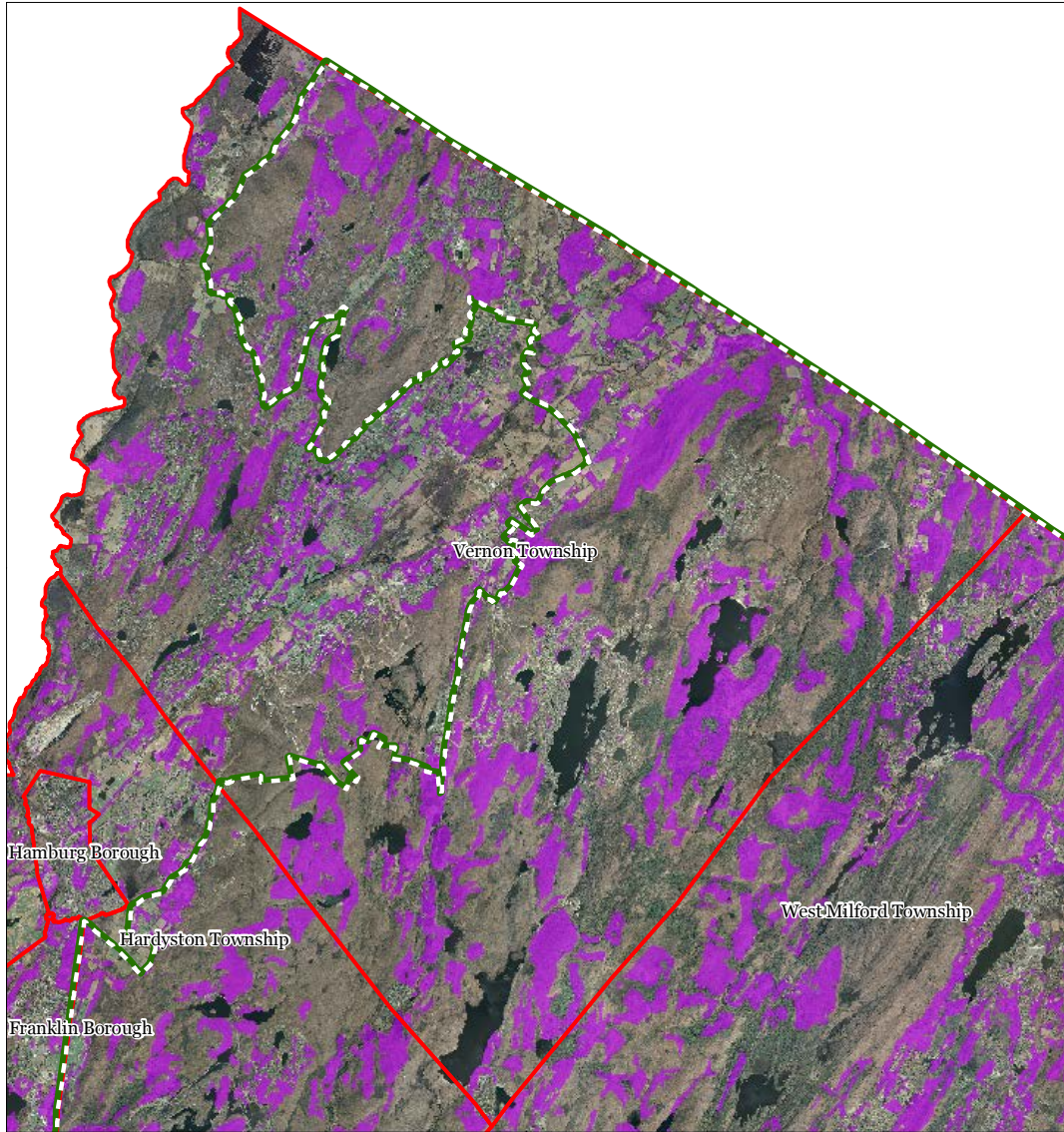
Vernon Township






1 inch = 1.48 miles

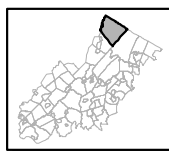


Exhibit S: Prime Ground Water Recharge Areas



-  Prime Groundwater Recharge Areas
-  Preservation Area
-  Municipal Boundaries

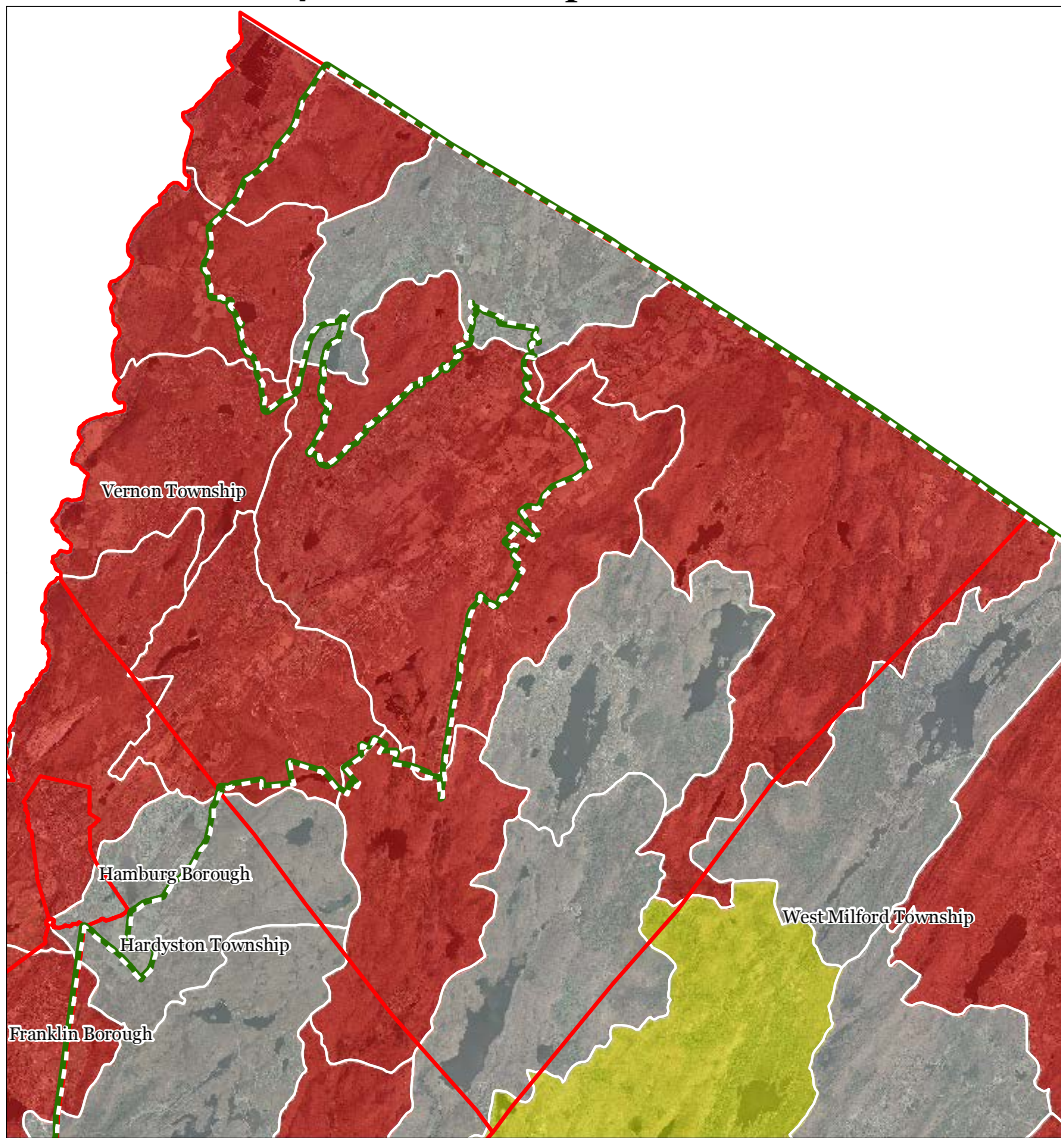
Vernon Township



1 inch = 1.48 miles



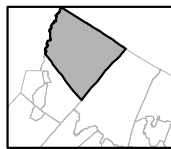
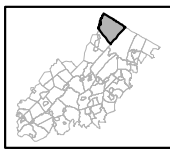
Exhibit T: HUC 14s on NJDEP Impaired Waters List



Impaired Waters Overall Assessment by HUC14 Subwatershed

- Non Impacted
- Insufficient Data Available
- Moderate
- Water Quality Impaired
- Preservation Area
- Municipal Boundaries

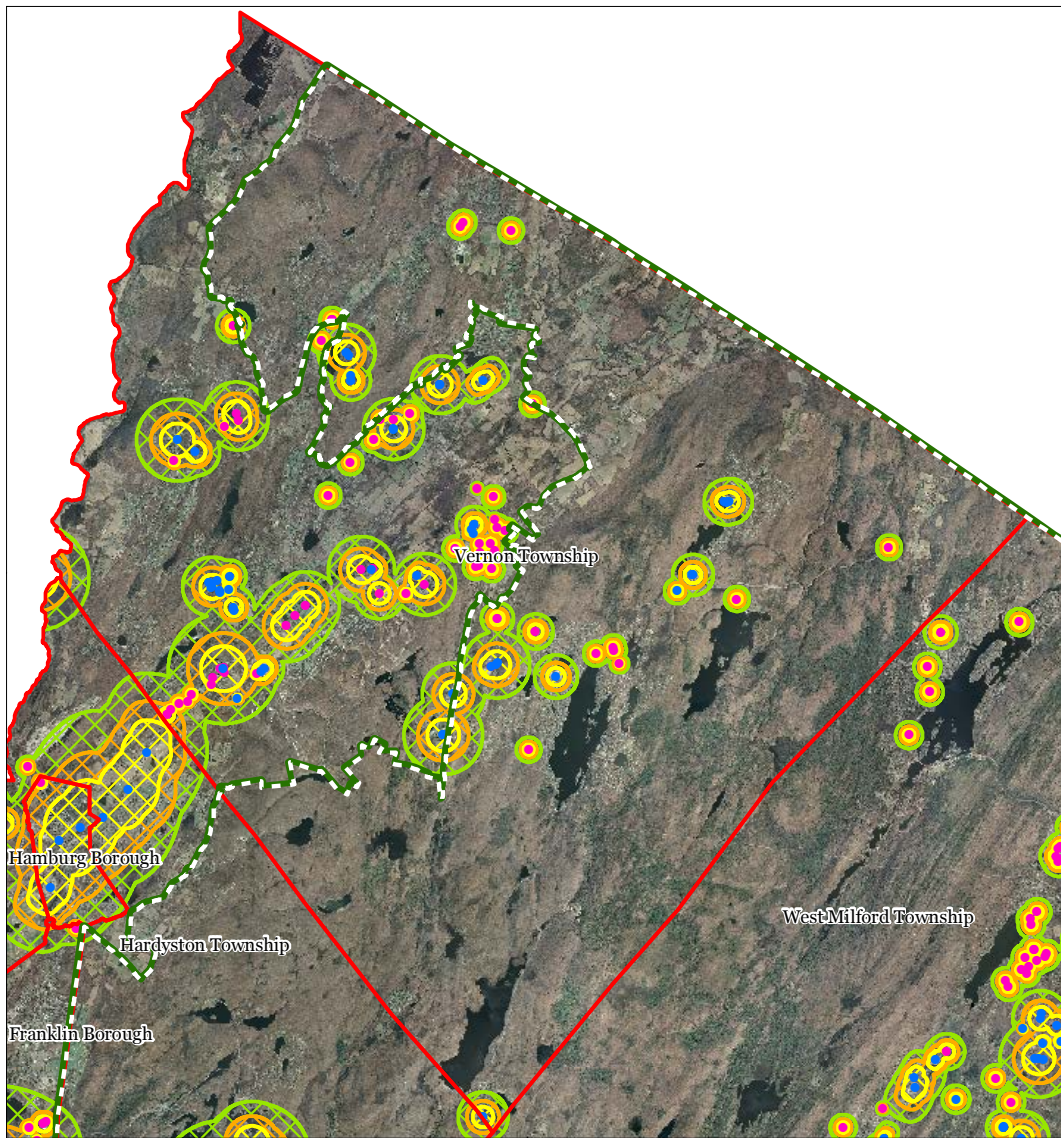
Vernon Township



1 inch = 1.48 miles



Exhibit U: Wellhead Protection Areas

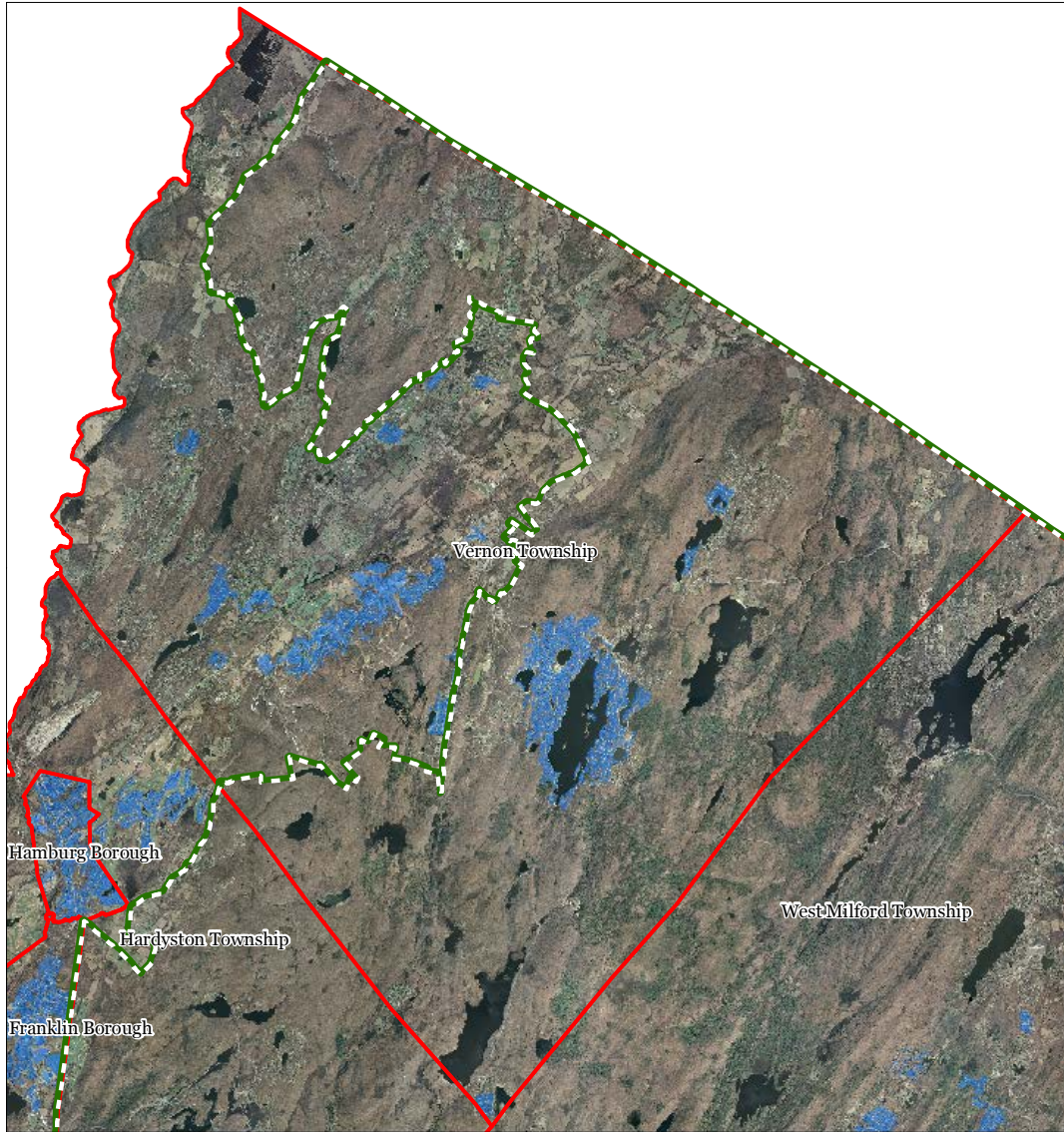


- Public Community Wells
 - Public Non-Community Wells
- Wellhead Protection Areas**
- 2-Year Tier
 - 5-Year Tier
 - 12-Year Tier
- Preservation Area
 - Municipal Boundaries

Vernon Township

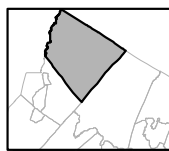
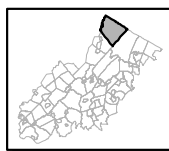
1 inch = 1.48 miles

Exhibit V: Public Community Water Systems



- Public Community Water Systems
- Preservation Area
- Municipal Boundaries

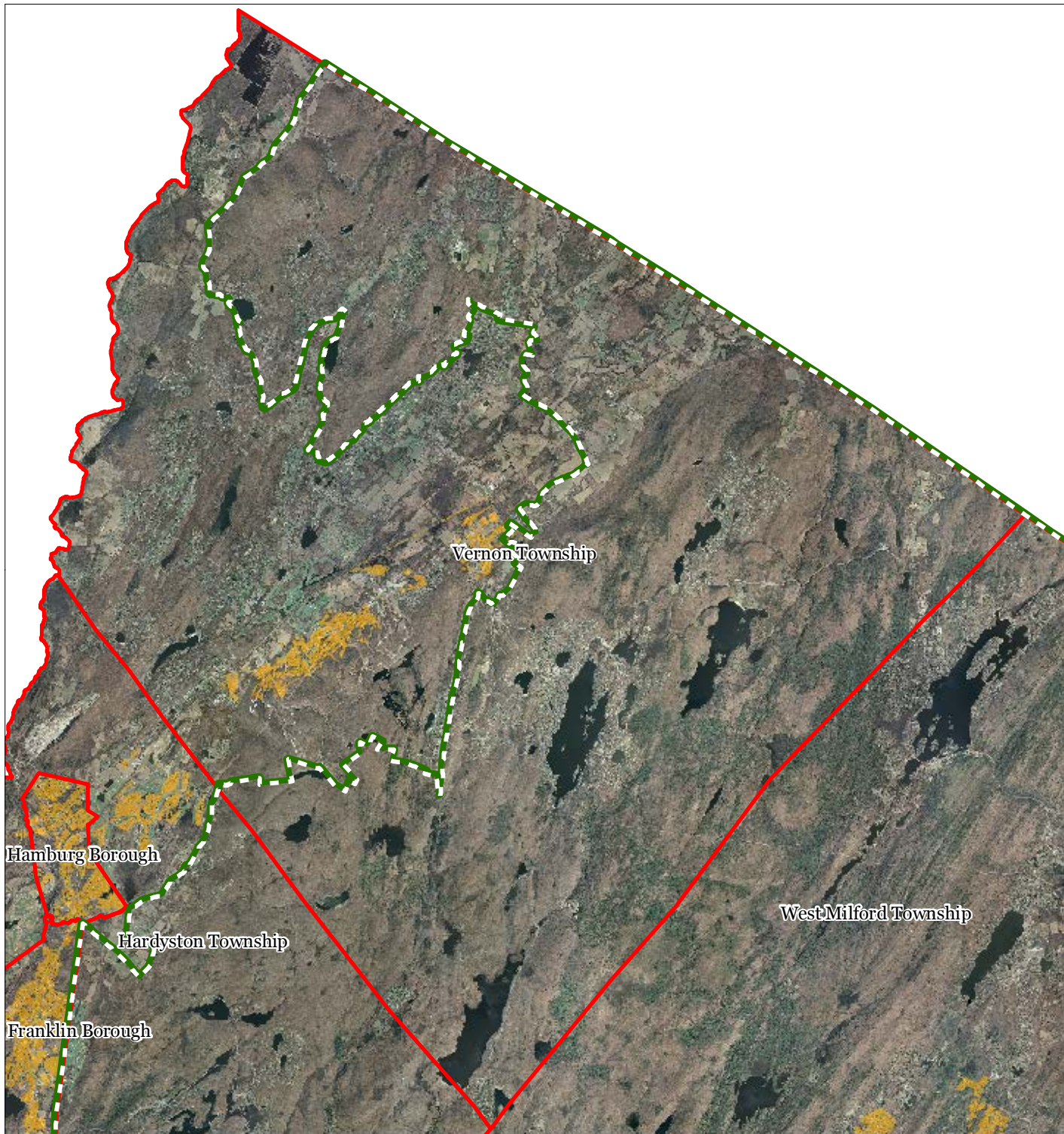
Vernon Township






1 inch = 1.48 miles



Exhibit W: Highlands Domestic Sewerage Facilities



Highlands Domestic Sewerage Facilities

-  Existing Area Served
-  Preservation Area
-  Municipal Boundaries

Vernon Township

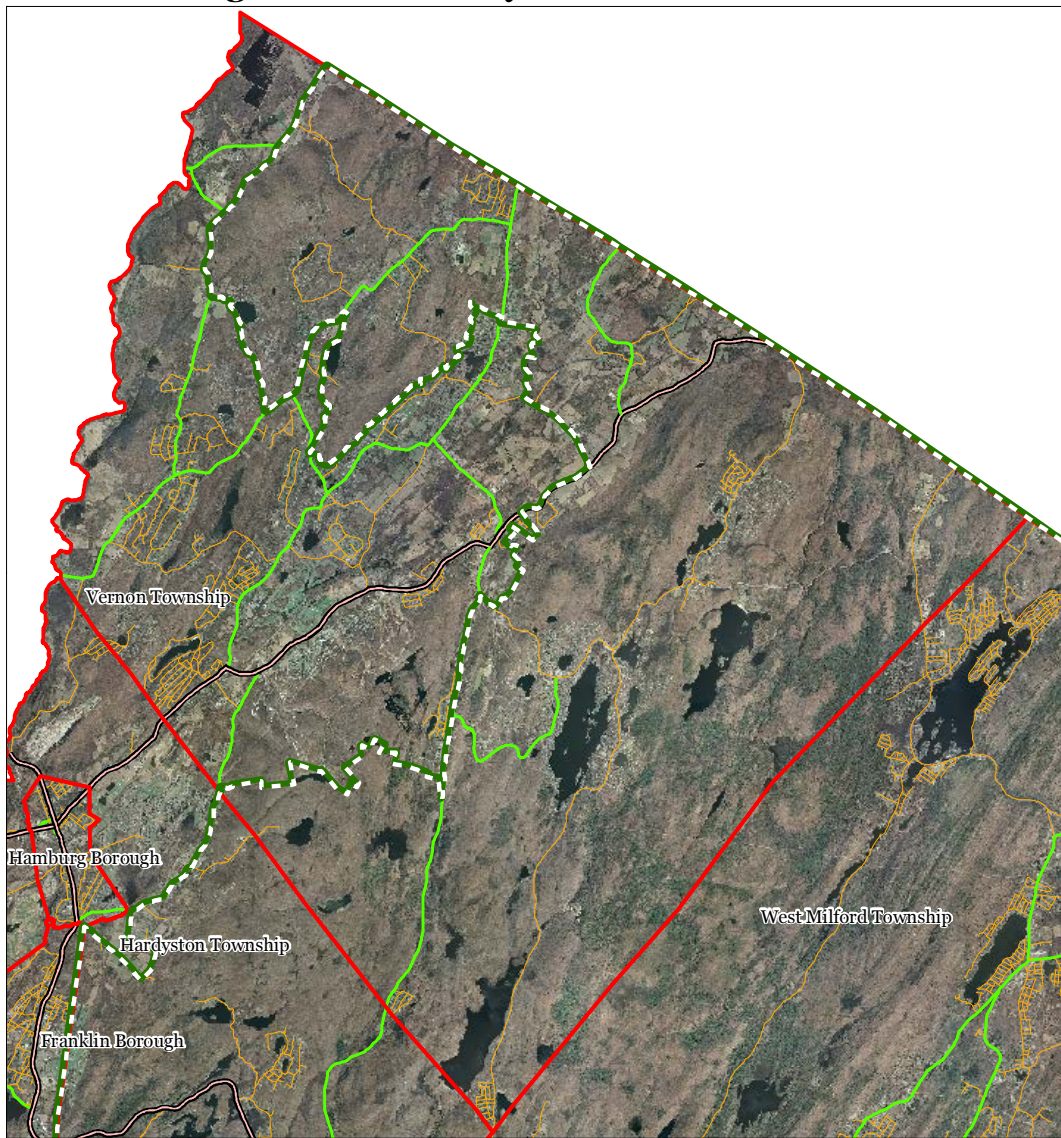


1 inch = 1.48 miles








JANUARY 2012

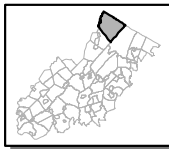
Exhibit Y: Highlands Roadway Network



Roadway Network

-  Interstate Highways
-  U.S. Routes
-  State Routes
-  County Routes
-  Local Routes
-  Preservation Area
-  Municipal Boundaries

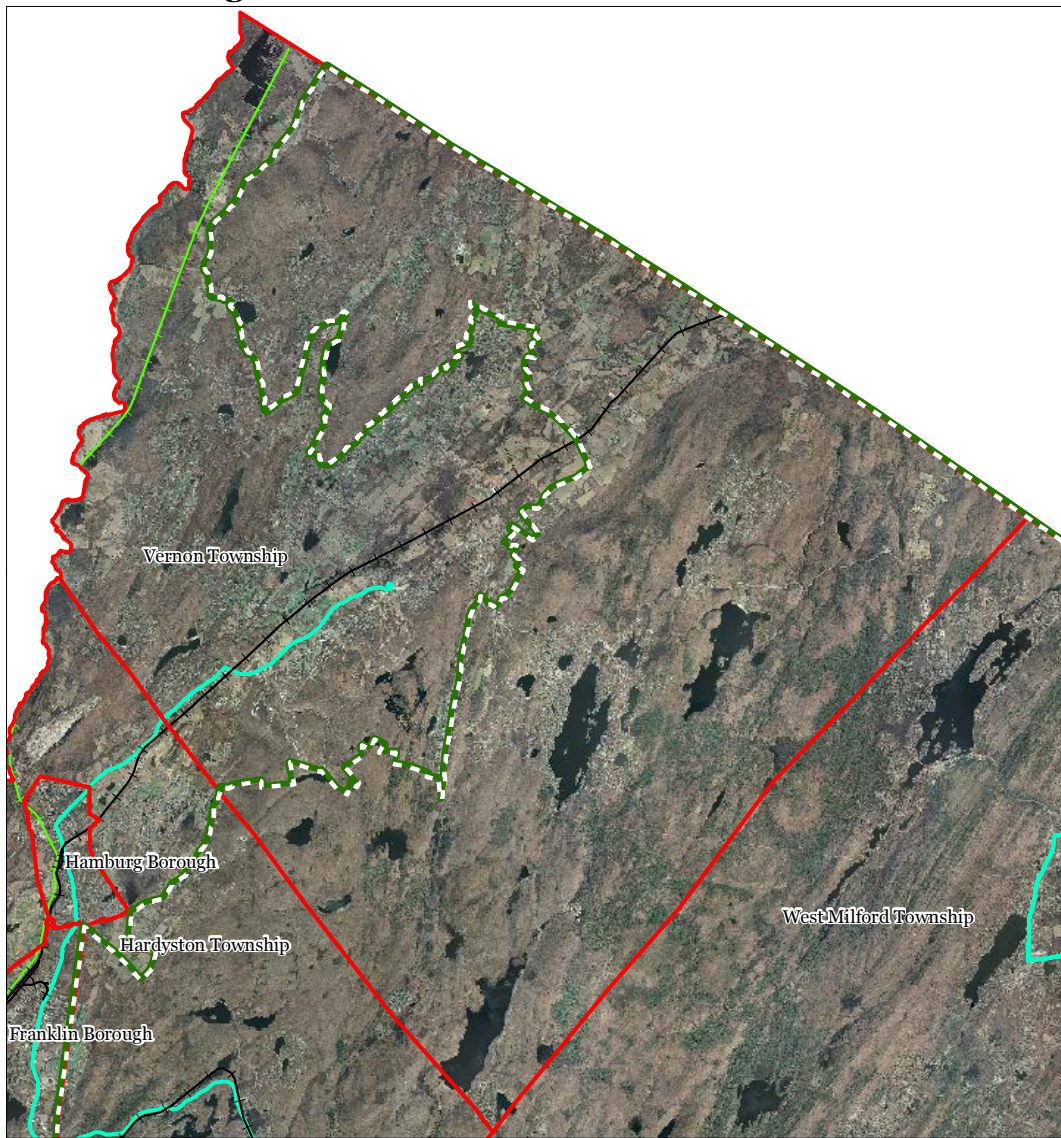
Vernon Township



1 inch = 1.48 miles

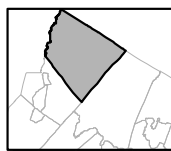
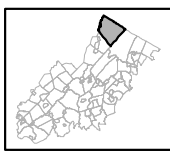


Exhibit Z: Highlands Transit Network



- | | |
|----------------------------------|------------------------|
| Rail Network | ● Rail Stations |
| — Boonton Line | ● Park and Ride Sites |
| — Main Line & Bergen County Line | — Private Bus Lines |
| — Morris and Essex Line | — NJ Transit Bus Lines |
| — Raritan Valley Line | ✈ Airports |
| Freight Rail Lines | |
| — Freight Rail Lines | |
| — Abandoned Freight Rail | |

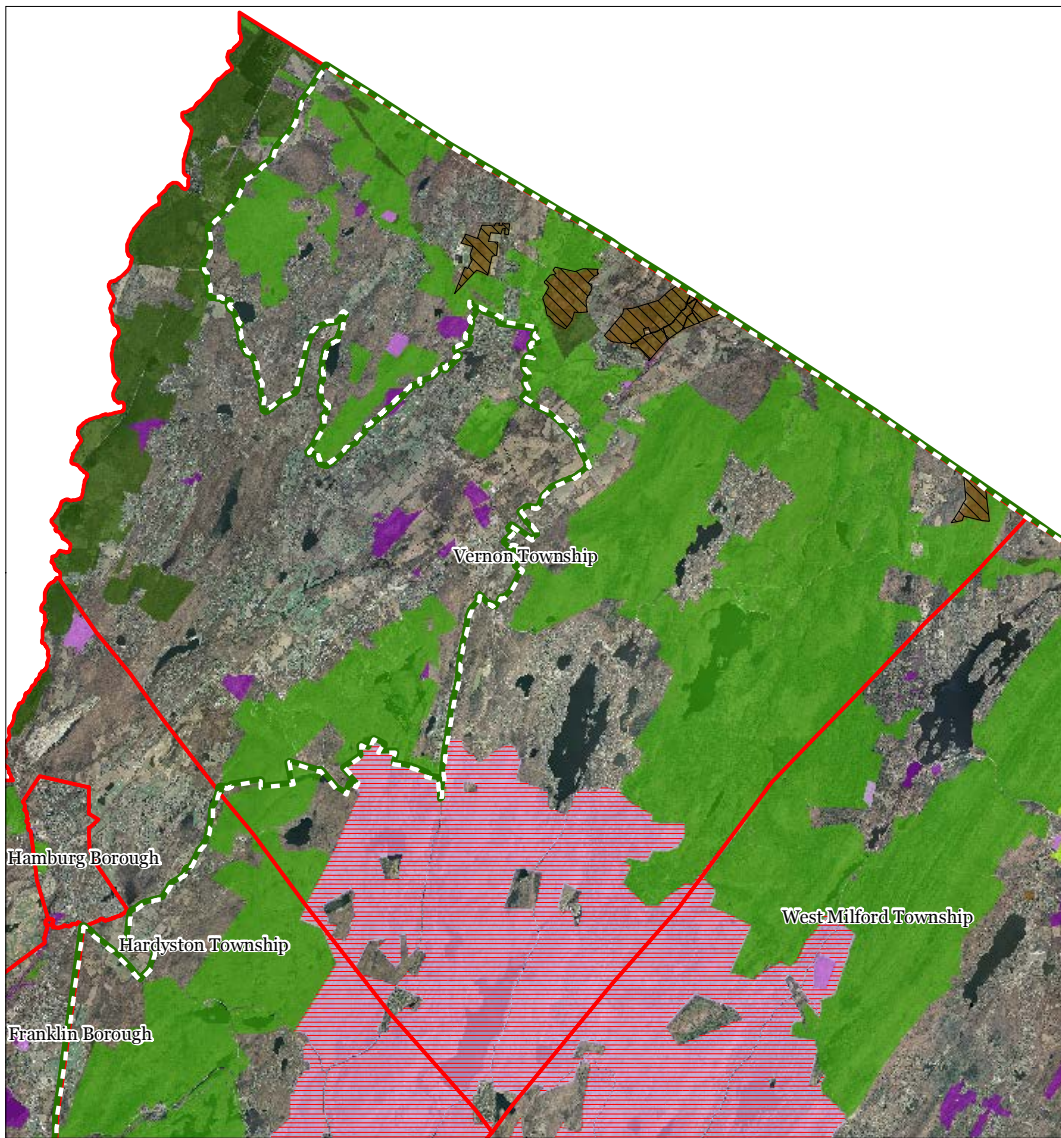
Vernon Township



1 inch = 1.48 miles

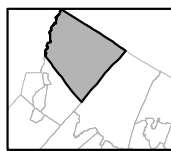
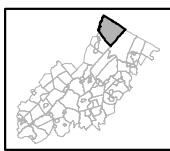


Exhibit AA: Preserved Lands



- | | |
|---|-------------------------------|
| Preserved Lands | Conservation Easements |
| Federal Open Space | Green Acres |
| State Open Space | SADC Easements |
| County Open Space | SADC Final |
| Municipal Open Space | SADC Preserved |
| Non-Profit/Private Open Space | Municipal Boundaries |
| Water Supply Watershed Lands | Preservation Area |
| Preserved Farmland | |
| Highlands Transfer of Development Lands | |

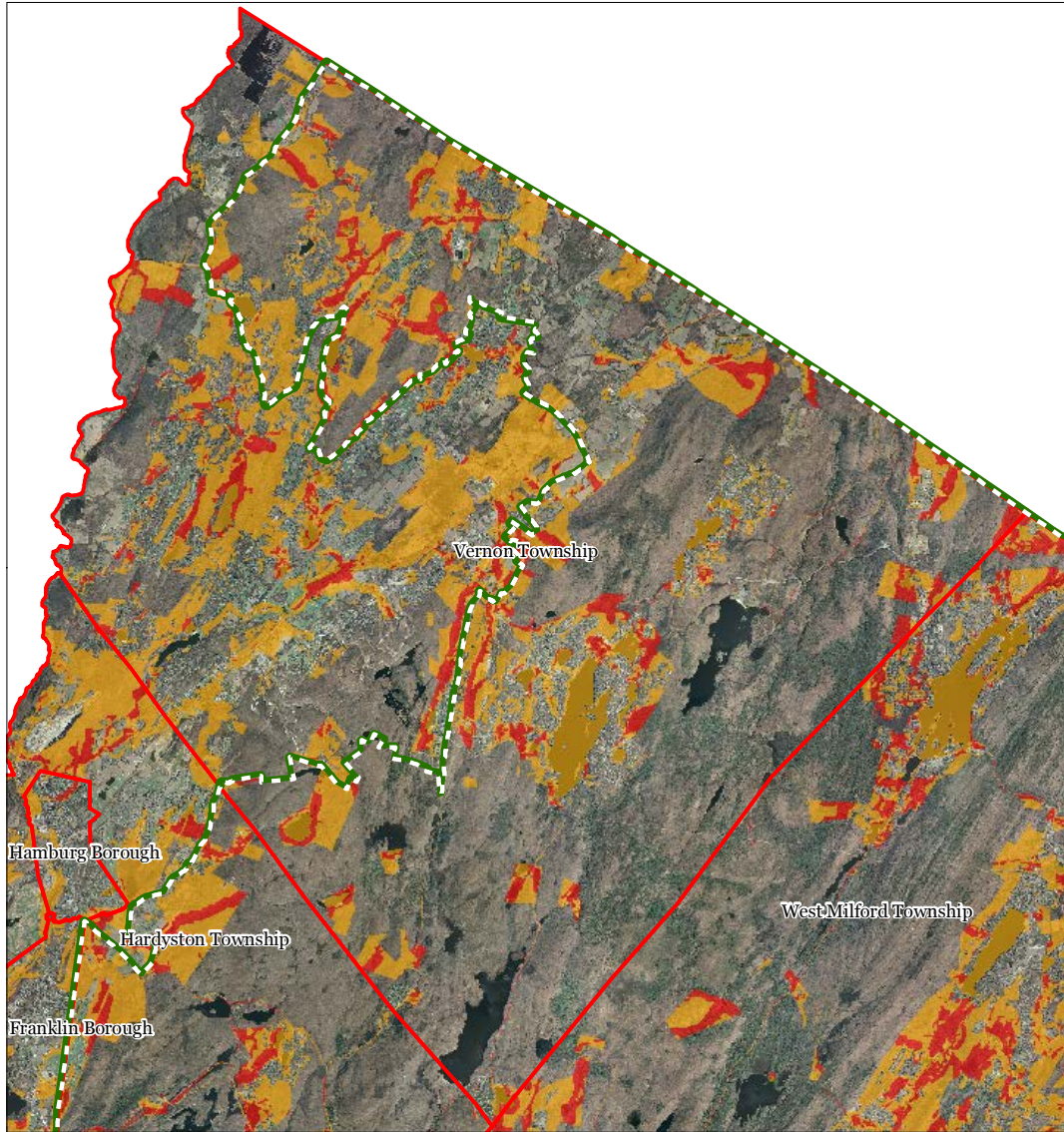
Vernon Township



1 inch = 1.48 miles

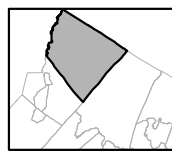
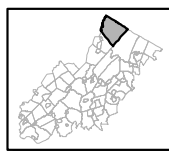


Exhibit BB: Highlands Conservation Priority Area



- Conservation Priority Area
- Moderate
 - High
 - Preservation Area
 - Municipal Boundaries

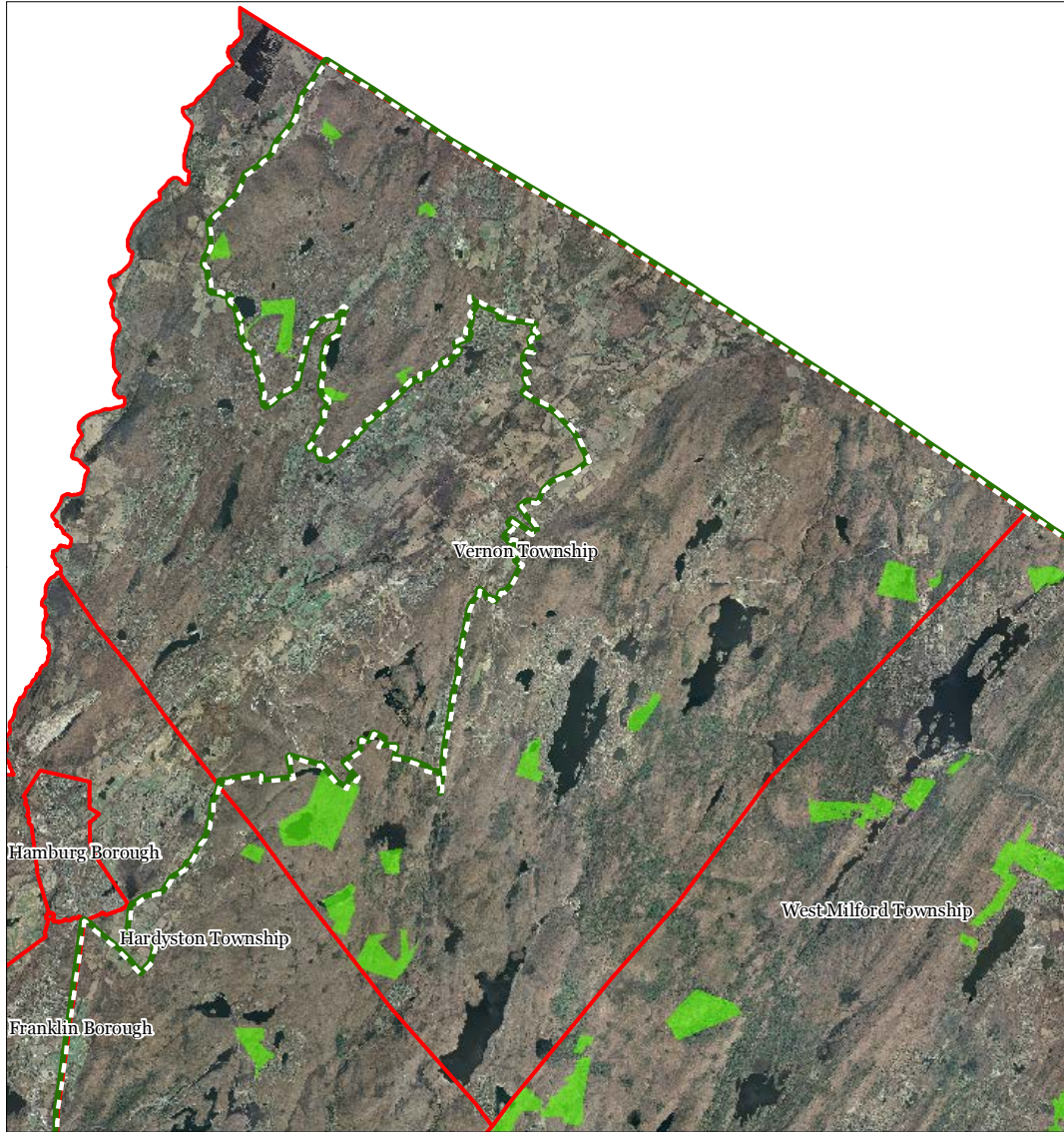
Vernon Township






1 inch = 1.48 miles

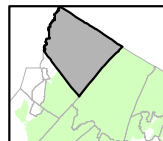
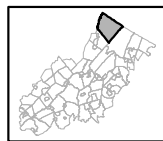


Exhibit CC: Highlands Special Environmental Zone



-  Special Environmental Zone
-  Preservation Area
-  Municipal Boundaries

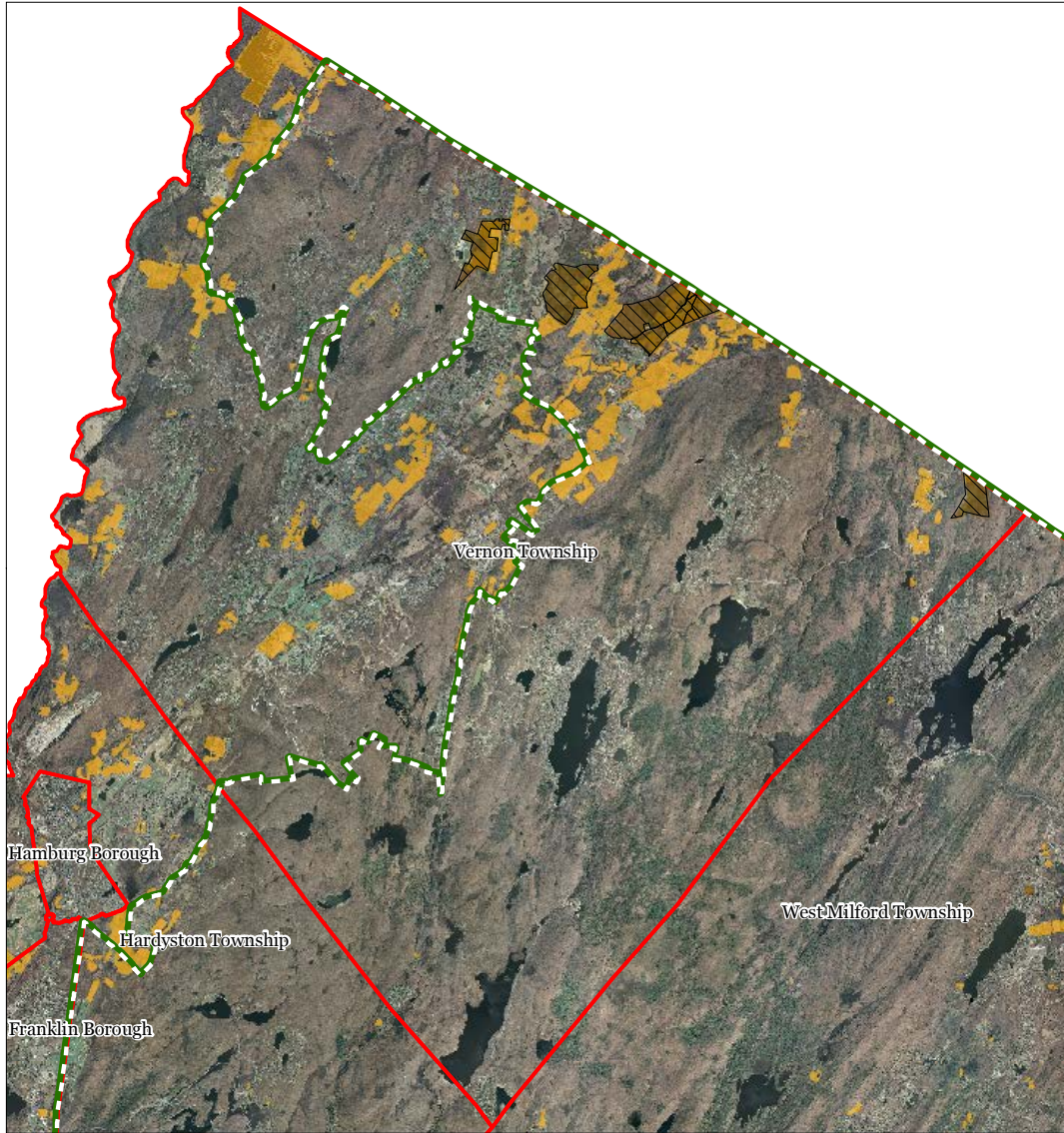
Vernon Township


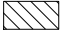






1 inch = 1.479 miles

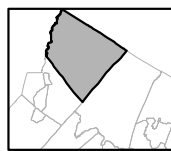
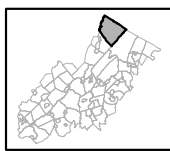


Exhibit DD: Preserved Farms, SADC Easements, All Agricultural Uses



- SADC Easements**
-  SADC Final
 -  SADC Preserved
 -  Preserved Farmland
 -  Agriculture Uses
 -  Preservation Area
 -  Municipal Boundaries

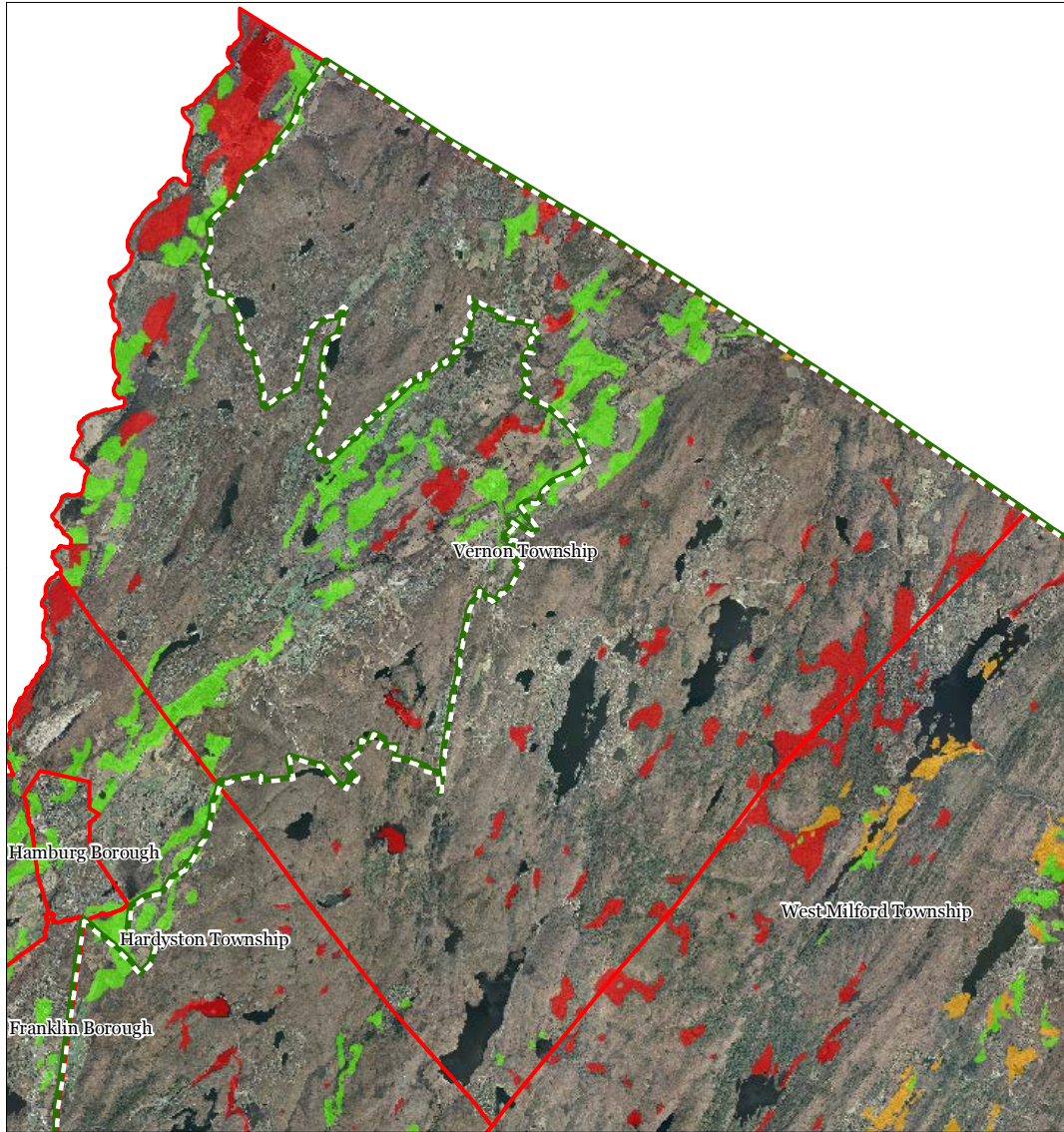
Vernon Township



1 inch = 1.48 miles

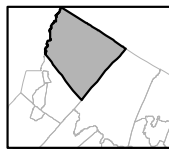
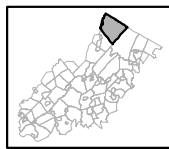


Exhibit EE: Important Farmland Soils



- Important Farmland Soils
- Prime Farmland
 - Farmland of Local Importance
 - Farmland of Statewide Importance
 - Farmland of Unique Importance
 - Preservation Area
 - Municipal Boundaries

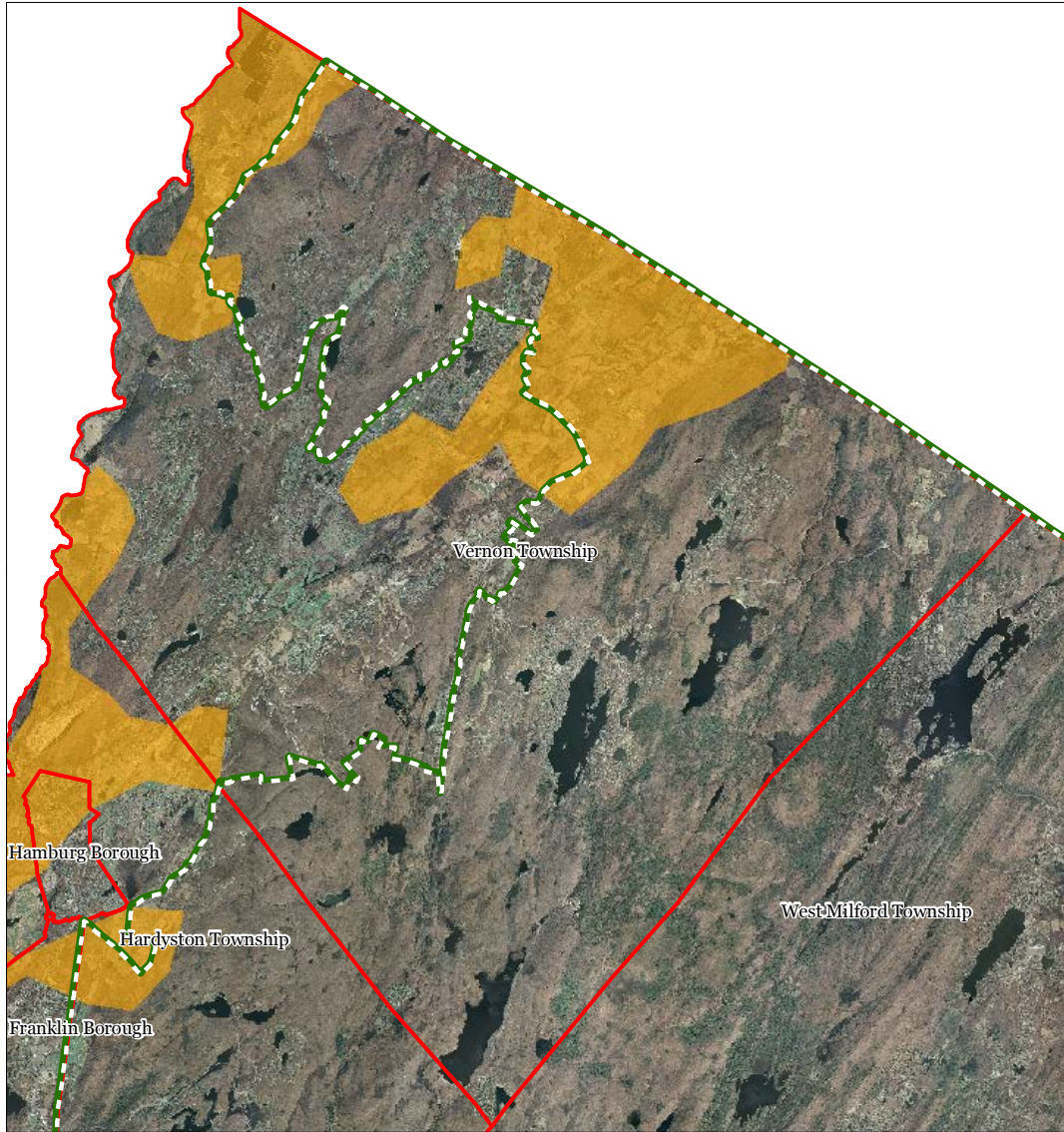
Vernon Township



1 inch = 1.48 miles

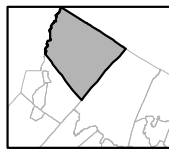
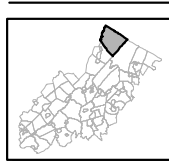


Exhibit FF: Agricultural Resource Area



- Agricultural Resource Area
- Preservation Area
- Municipal Boundaries

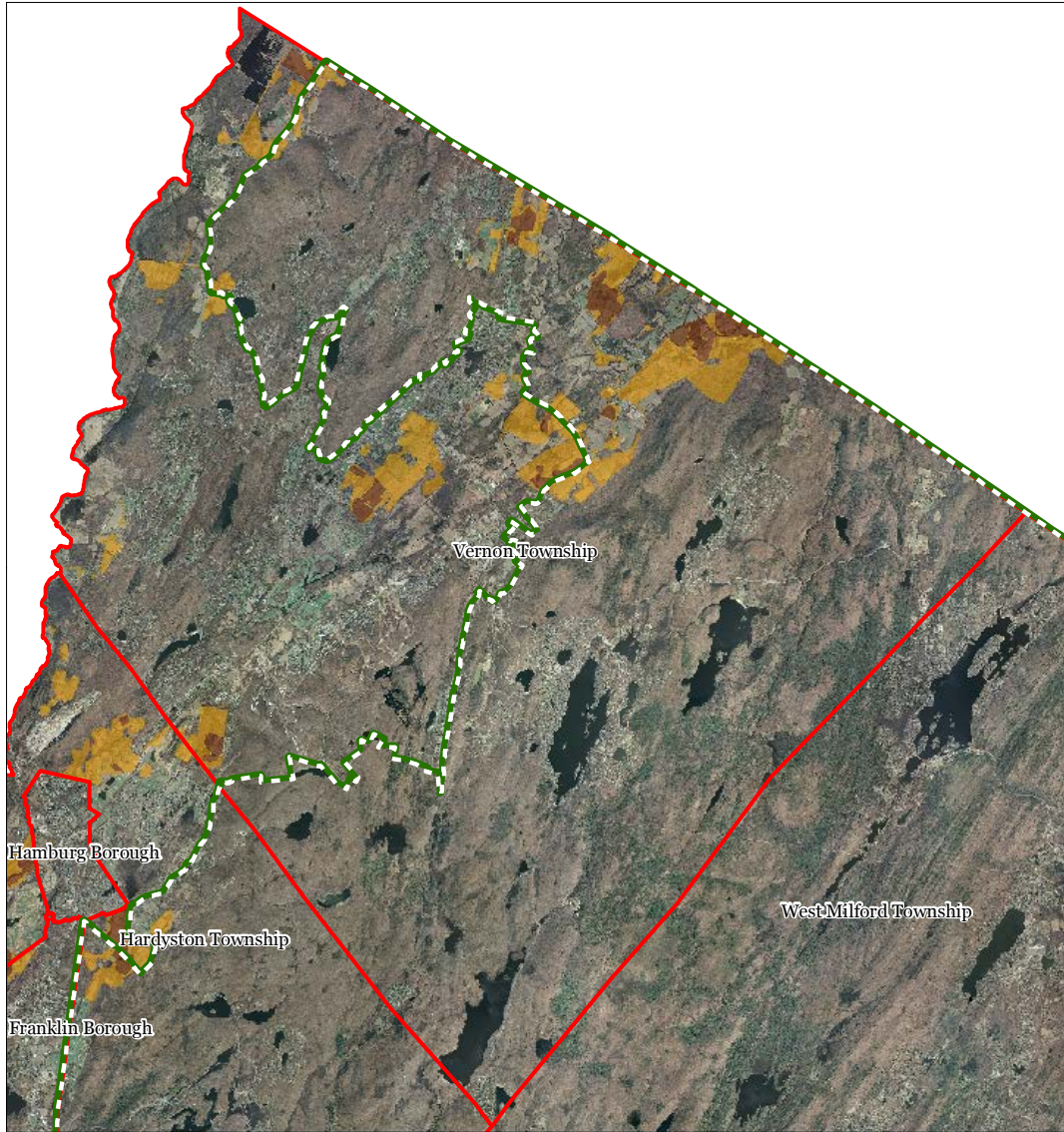
Vernon Township



1 inch = 1.48 miles

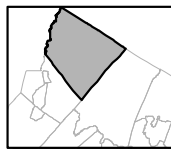
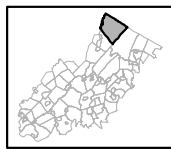


Exhibit GG: Agricultural Priority Area



- Agricultural Priority Area
- Moderate
 - High
 - Preservation Area
 - Municipal Boundaries

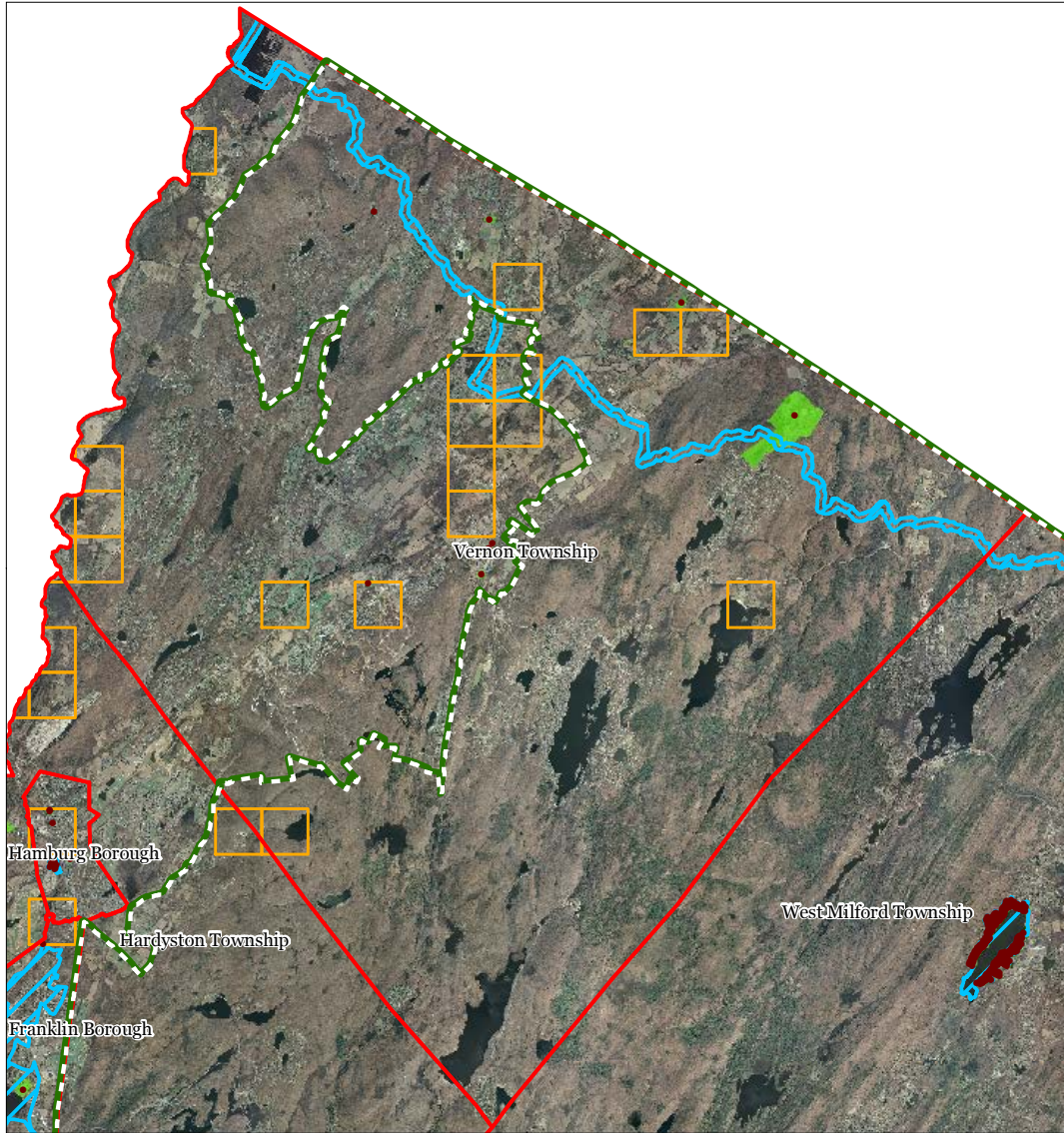
Vernon Township





1 inch = 1.48 miles

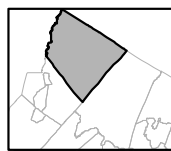
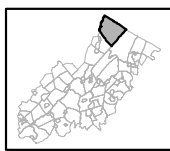


Exhibit HH: Historic, Cultural, and Archaeological Resources Inventory



-  Preservation Area
-  Municipal Boundaries
-  Archaeological Grids (1 sqmi)
-  NJ Historic Districts
-  Historic Property Points
-  Historic Property Polygons

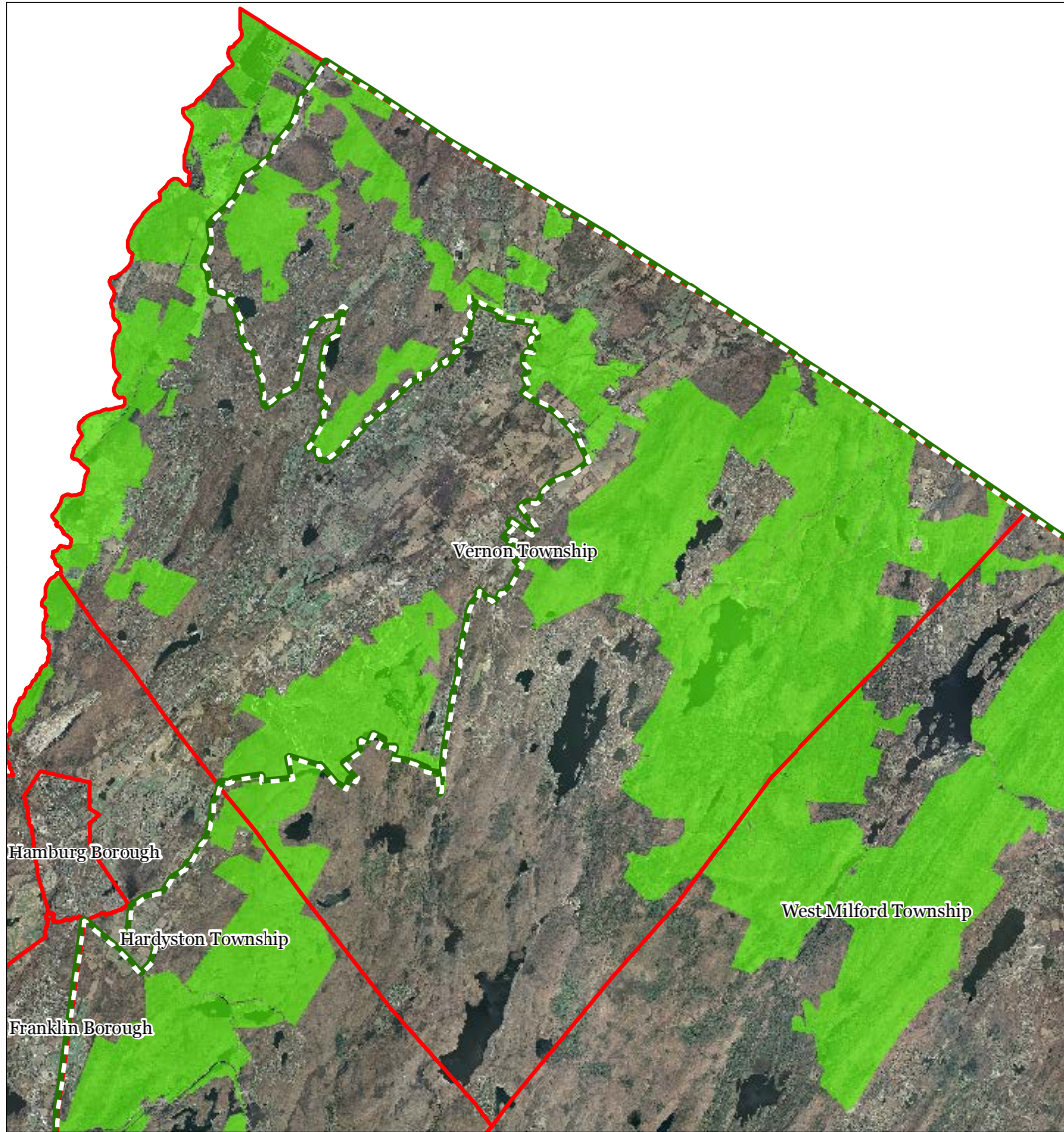
Vernon Township






1 inch = 1.48 miles

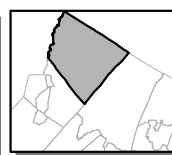
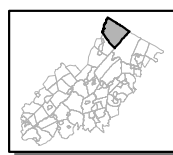


Exhibit II: Baseline Scenic Resources Inventory



-  Scenic Resources
-  Municipal Boundaries
-  Preservation Area

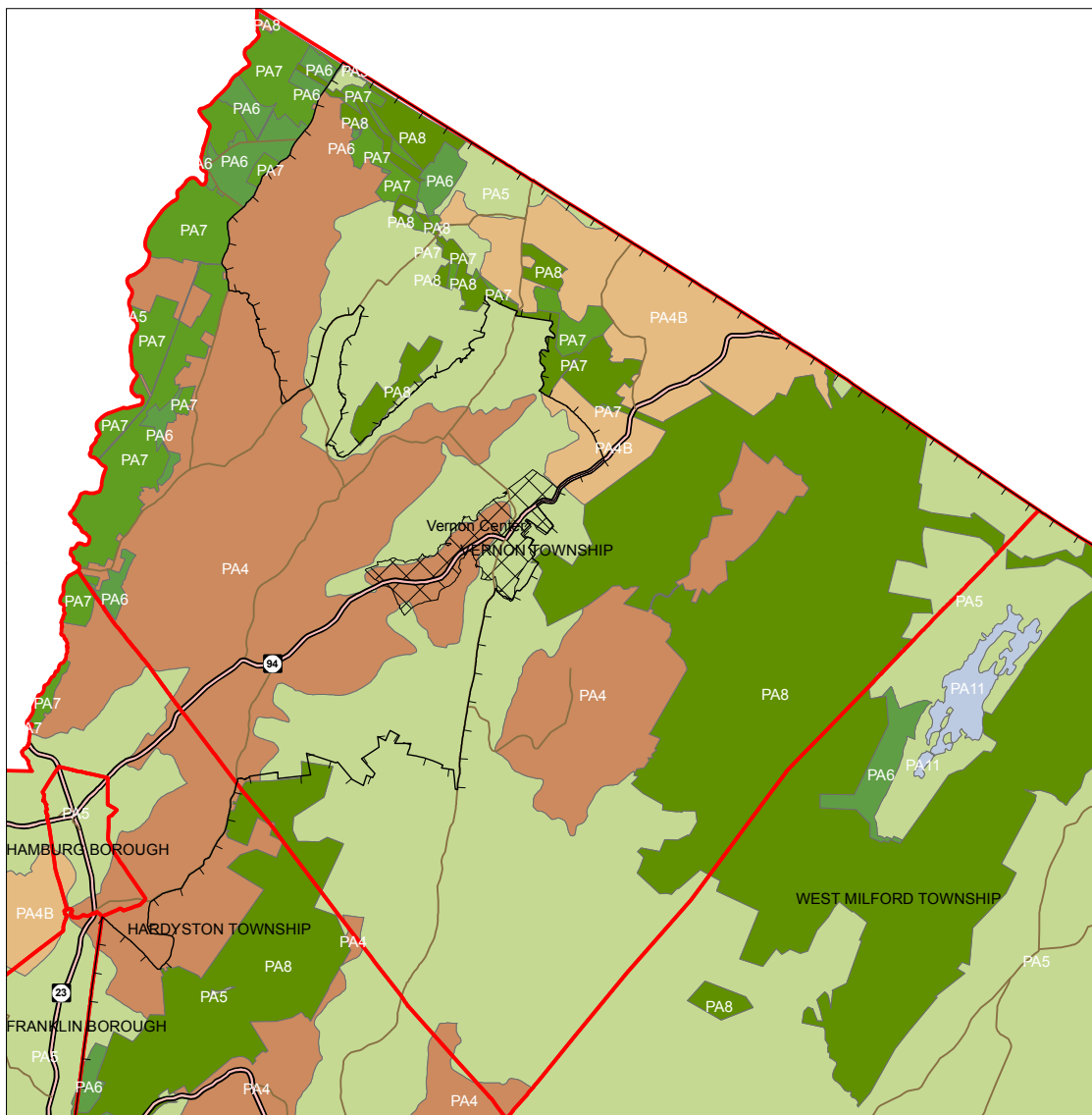
Vernon Township



1 inch = 1.48 miles



Exhibit JJ: SDRP Planning Areas & Designated Centers



Legend

- Preservation Area
- Municipal Boundaries
- Interstate Highways
- U.S. Routes
- State Routes
- County Routes
- Designated Centers*

State Planning Areas*

- METROPOLITAN (PA1)
- SUBURBAN (PA2)
- FRINGE (PA3)
- RURAL (PA4)
- RURAL ENVIRONMENTALLY SENSITIVE (PA4B)

- ENVIRONMENTALLY SENSITIVE (PA5)
- PARK (PA6)
- FEDERAL PARK (PA7)
- WATER (PA11)
- MILITARY (PA12)

1 inch equals 1.57 miles

* All designated centers expired on 1/7/2008 except Byram (expired 5/19/2010), Stanhope (expired 10/16/2008), and Sparta and Vernon (expired 7/16/2009). Expired center designations may be considered for Highland Center designation by the Highlands Council. State Planning Areas are from the State Development and Redevelopment Plan.

