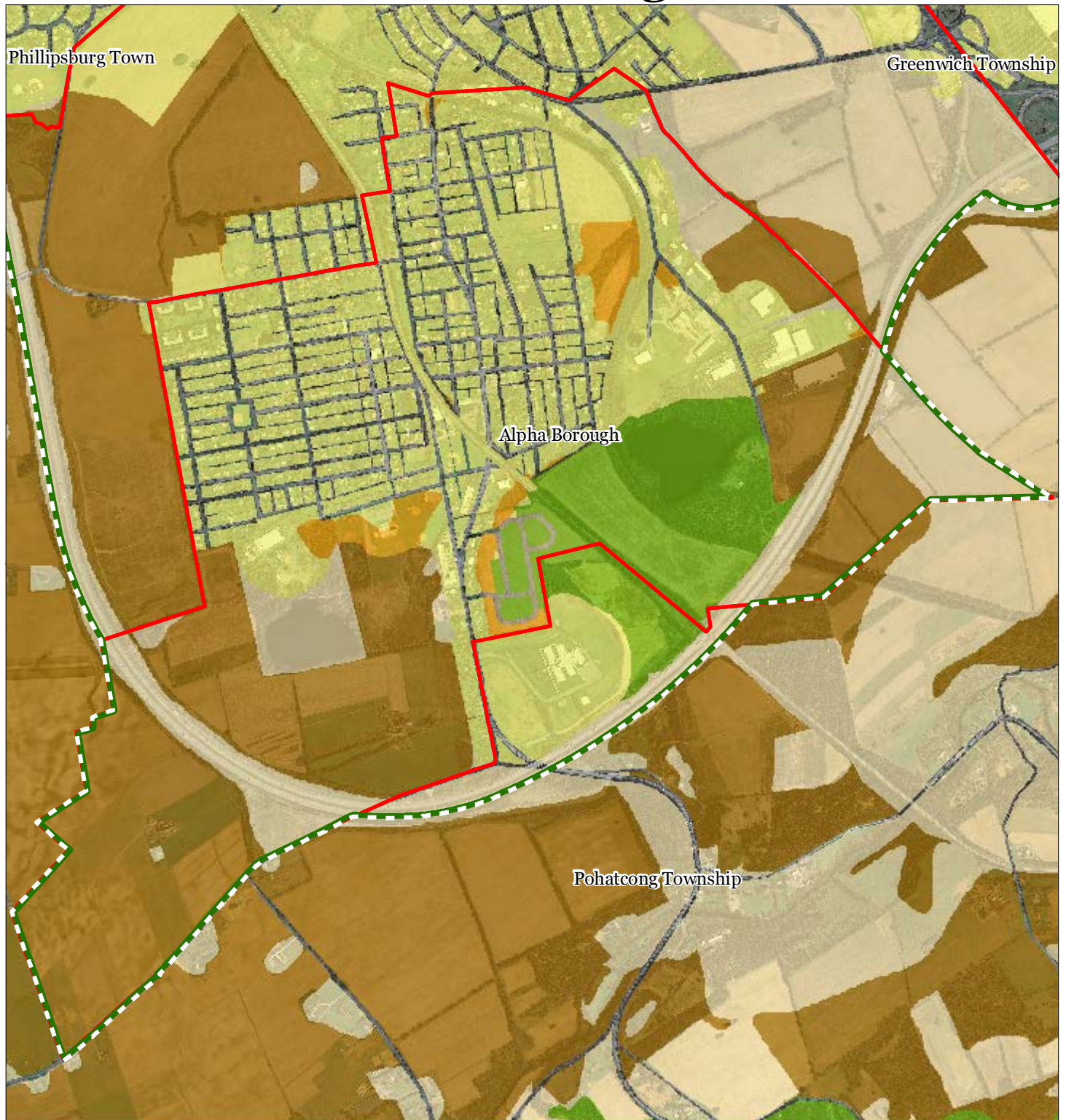


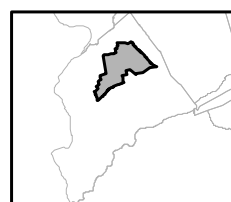
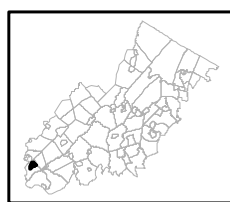
# Exhibit A: 6cfci [\ `cZ5`d\ U< ][\ `UbXgD`Ubb]b[ `5fYU



## Regional Master Plan Overlay Zone Designation



## Alpha Borough



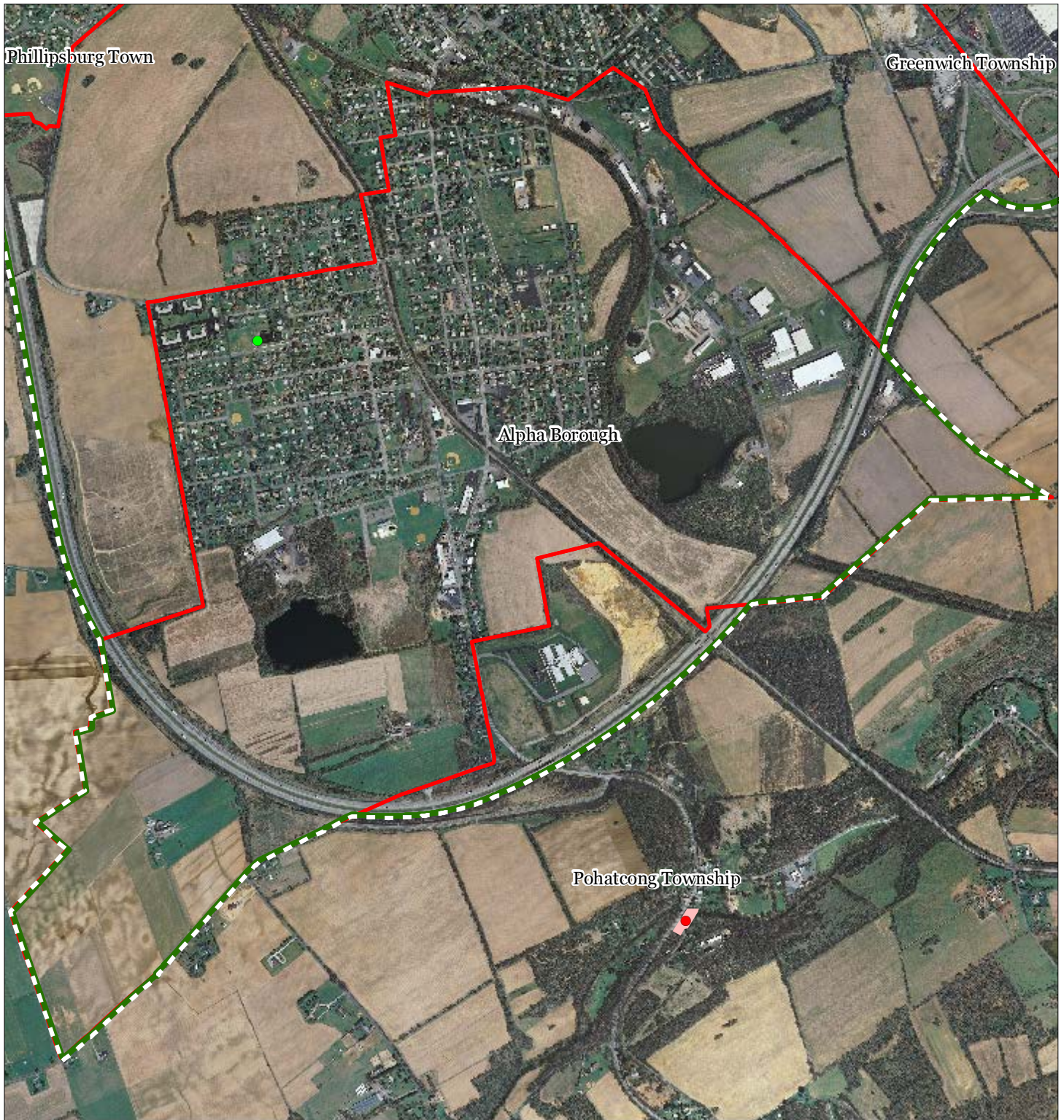
1 inch = 0.266 miles



SEPT 2011



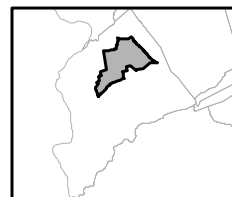
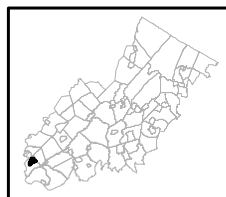
## Exhibit C: Highlands Contaminated Site Inventory



Highlands Contaminated Site Inventory

**Alpha Borough**

- Tier 1 Sites
- Tier 1 Sites (Polygons)
- Tier 2 Sites
- ▭ Preservation Area
- ▭ Municipal Boundaries



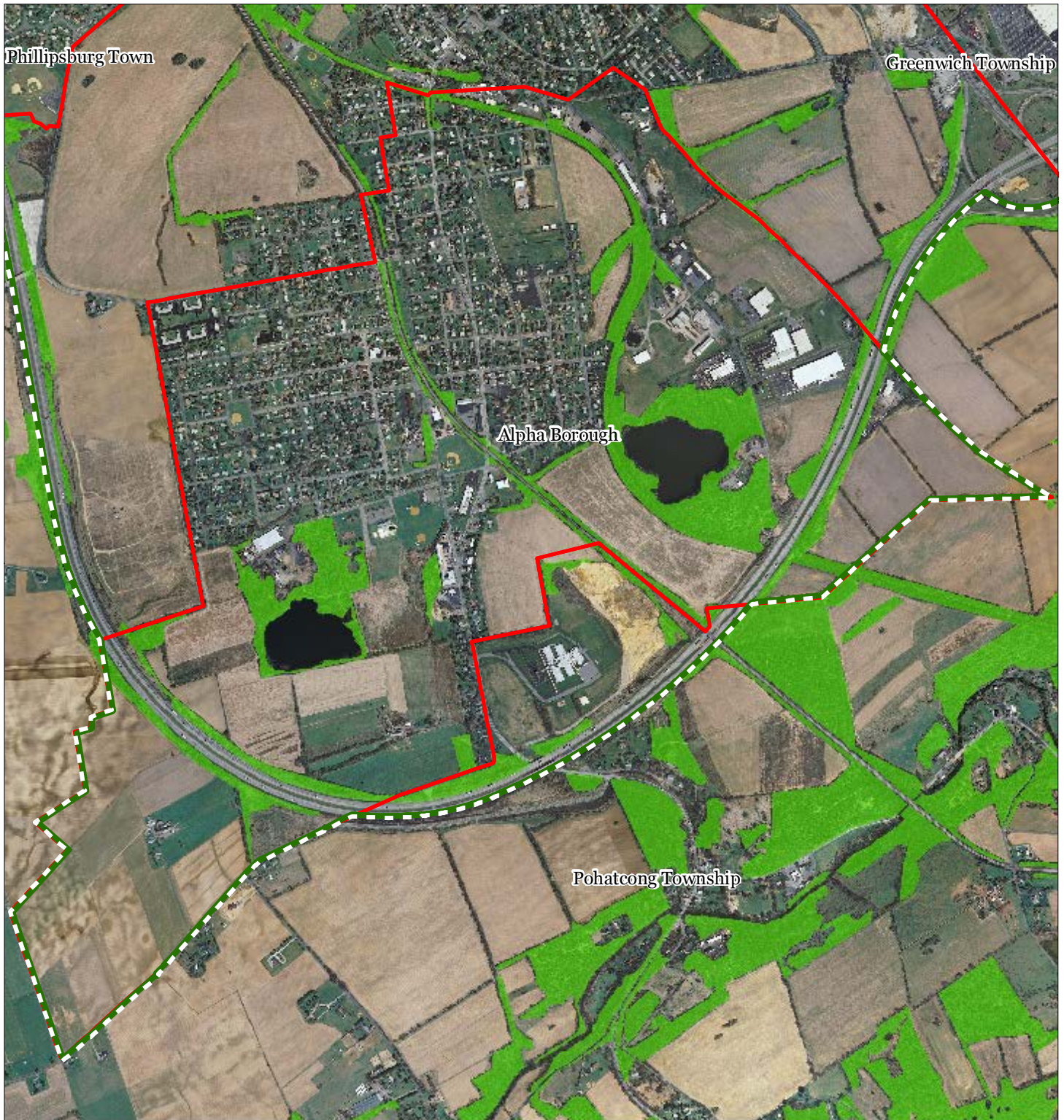
1 inch = 0.266 miles






SEPT 2011

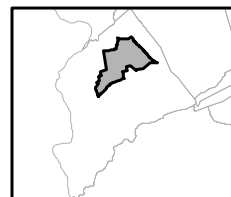
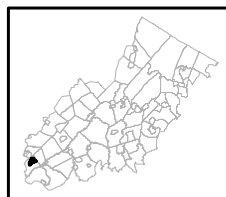


## Exhibit F: Total Forest Area



-  Forested Areas
-  Preservation Area
-  Municipal Boundaries

### Alpha Borough

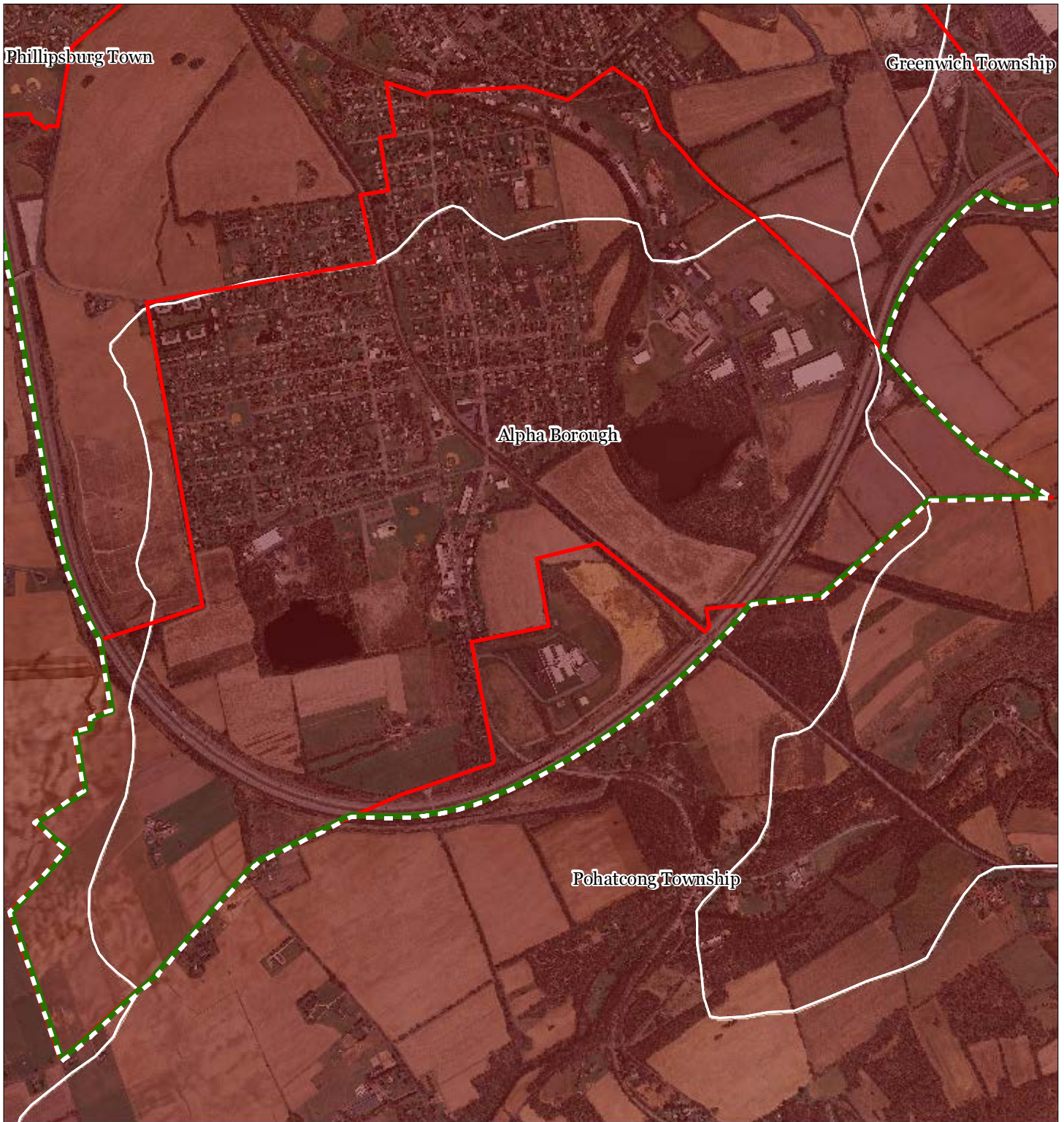


1 inch = 0.266 miles










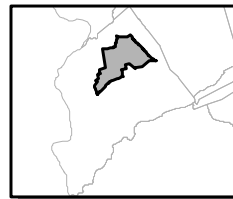
## Exhibit G: Forest Subwatersheds



Forest Integrity by HUC14 Subwatershed

-  *Low*
-  *Moderate*
-  *High*
-  Preservation Area
-  Municipal Boundaries

**Alpha Borough**



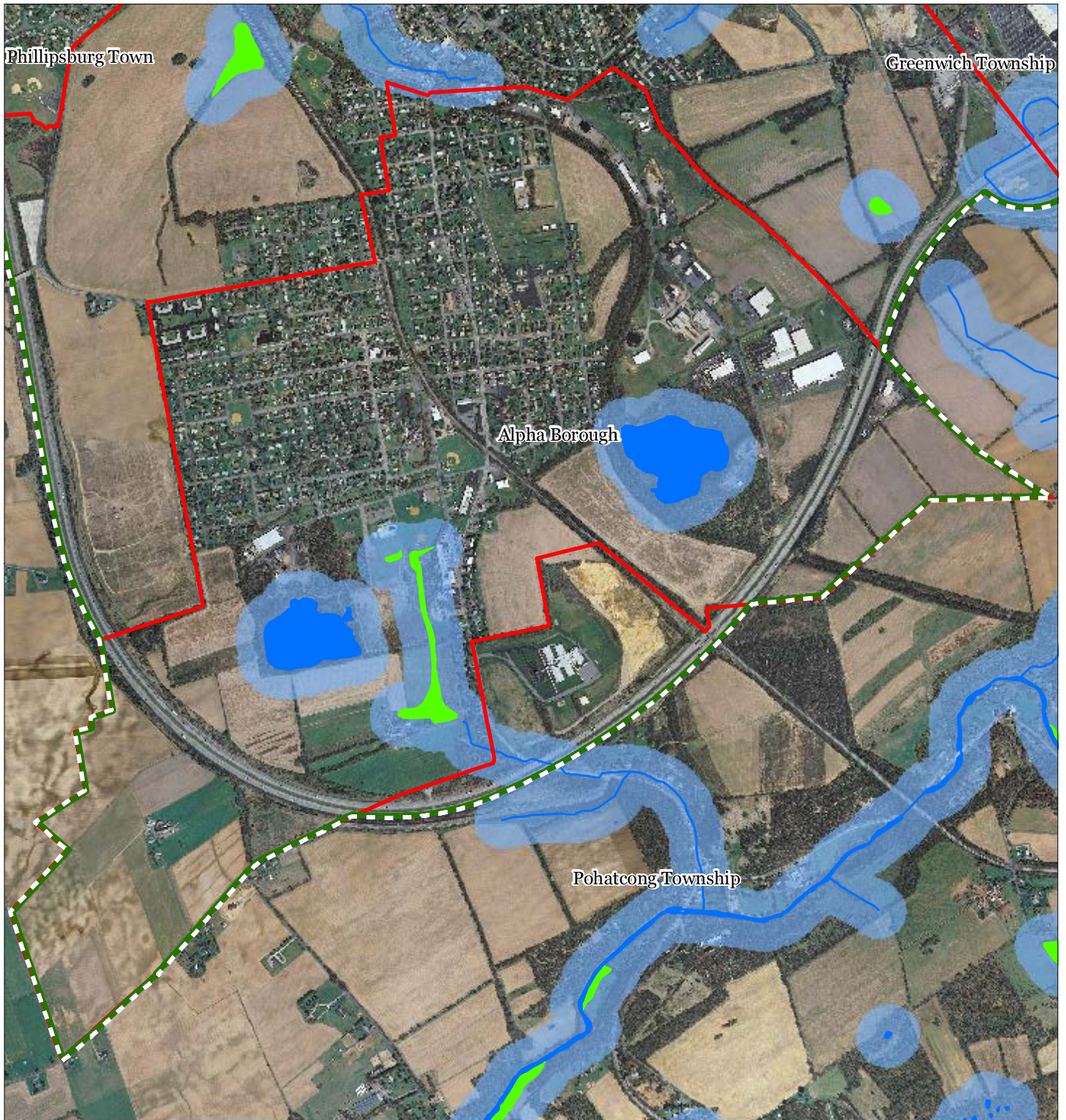
1 inch = 0.266 miles



SEPT 2011

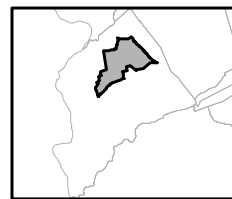


## Exhibit H: Highlands Open Waters



- Highlands Open Water Buffers (300ft)
- Streams
- Wetlands
- Lakes & Ponds
- Preservation Area
- Municipal Boundaries

### Alpha Borough



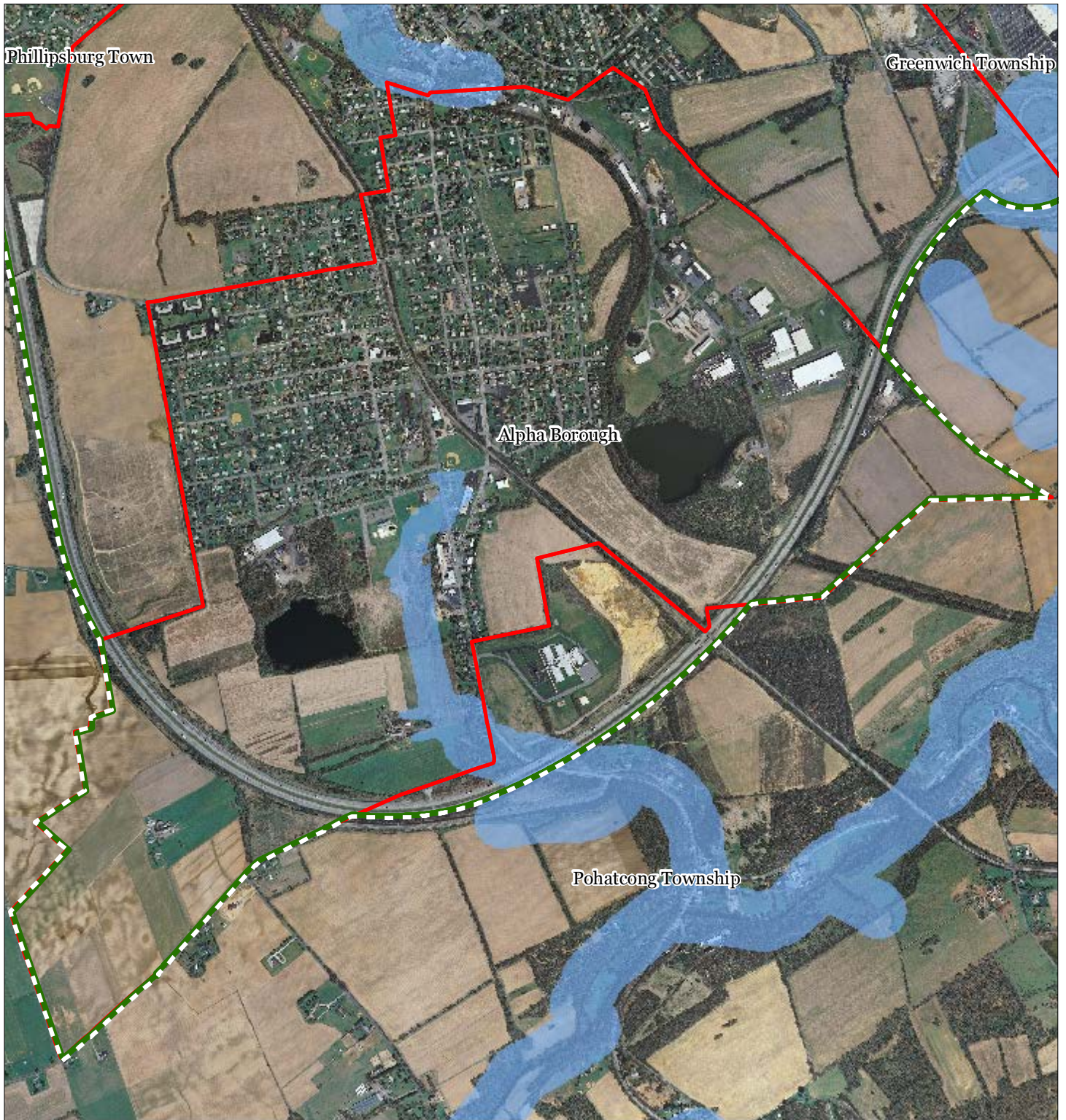
1 inch = 0.266 miles

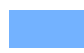


**Highlands Council**  
New Jersey



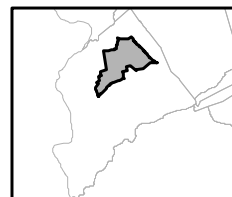
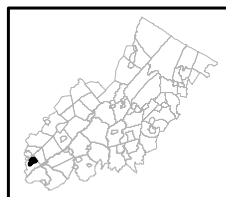


## Exhibit I: Highlands Riparian Area



-  Riparian Area
-  Preservation Area
-  Municipal Boundaries

## Alpha Borough Exhibit

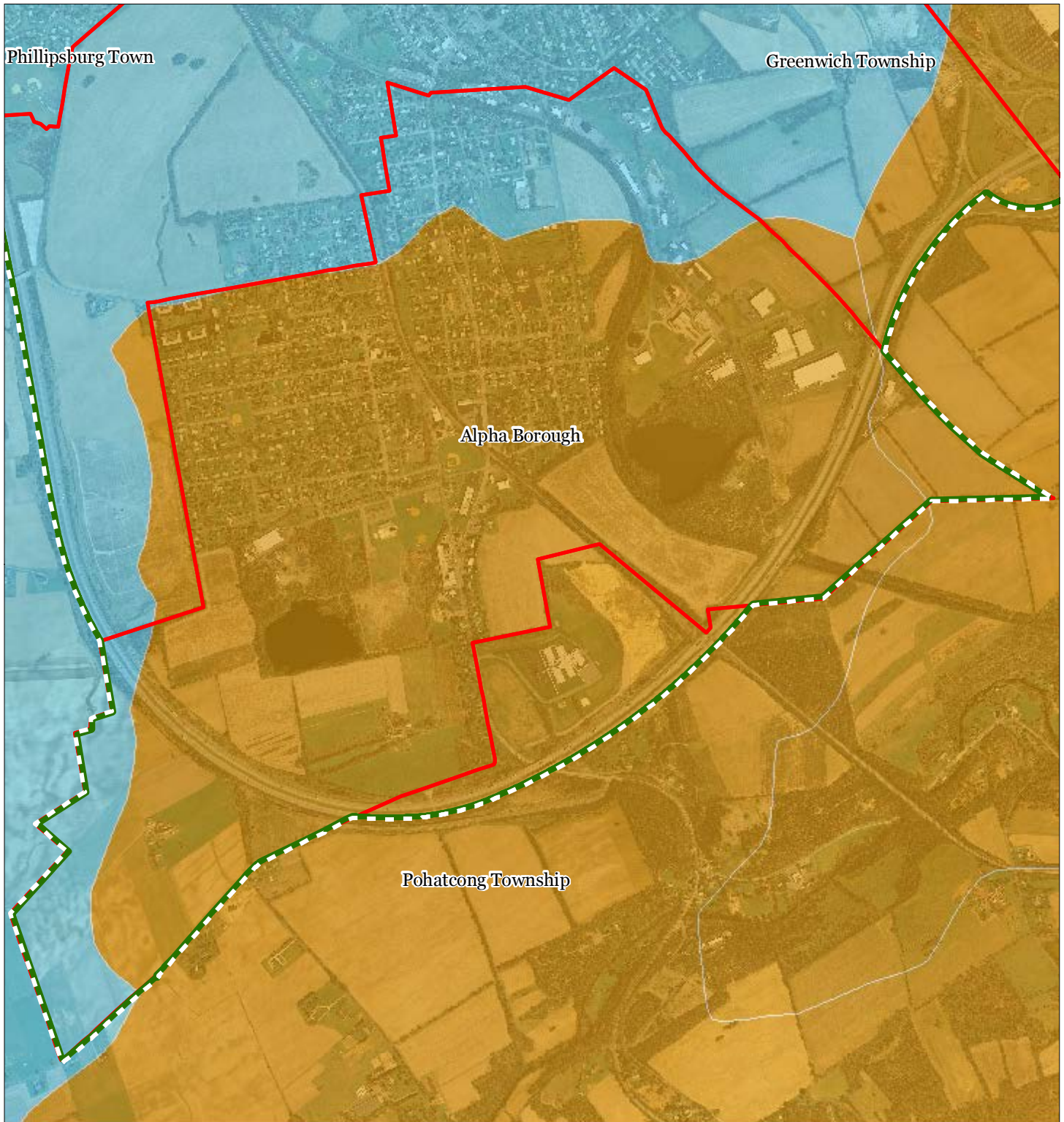


1 inch = 0.266 miles

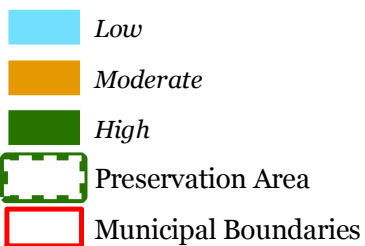




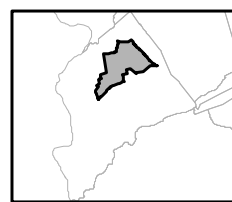
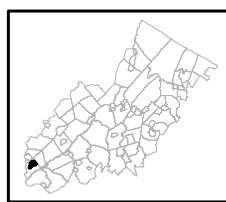
## Exhibit J: Watershed Values



Watershed Values by HUC14 Subwatershed



## Alpha Borough

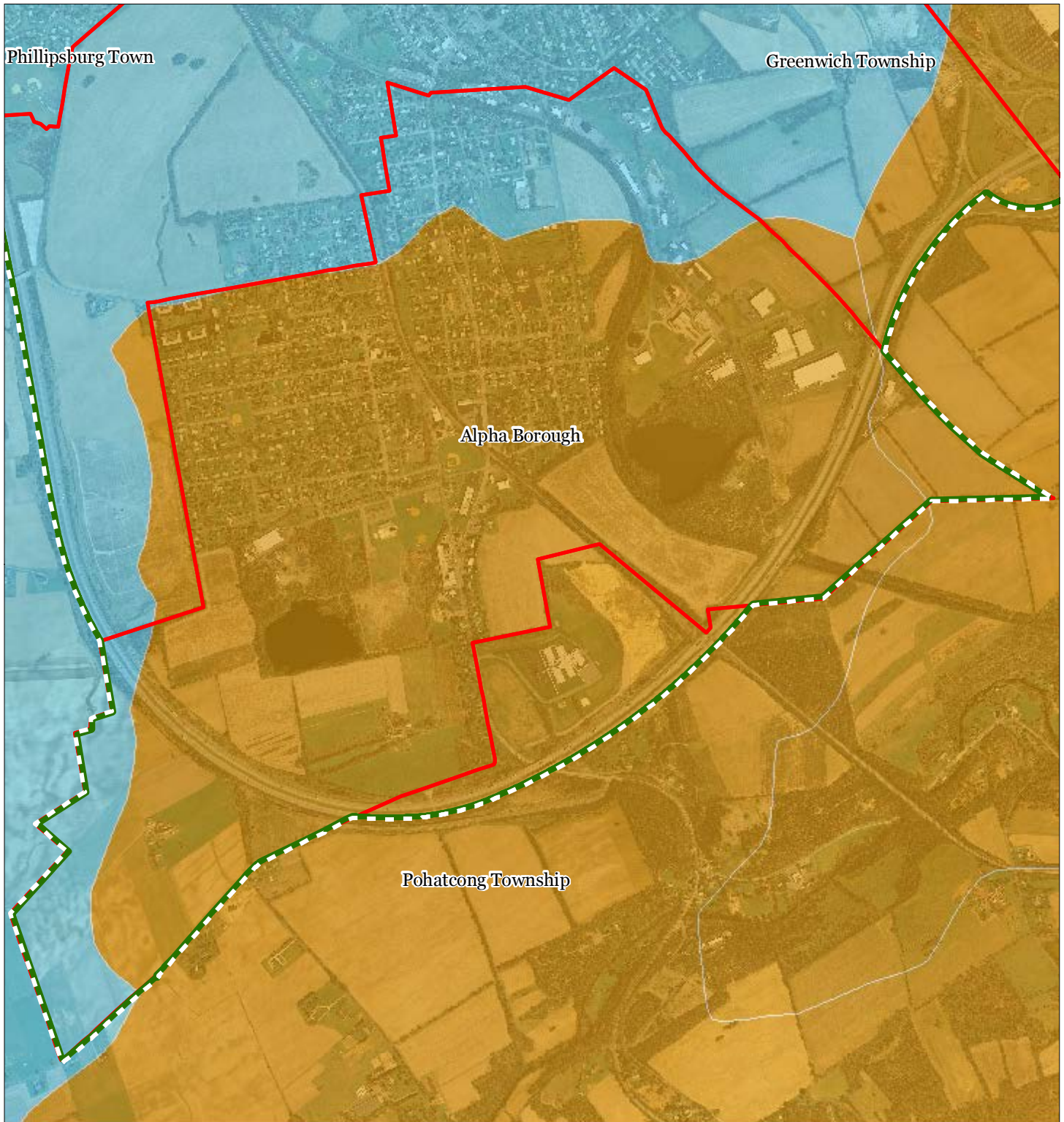


1 inch = 0.266 miles





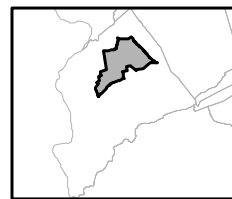
## Exhibit K: Riparian Integrity



Riparian Integrity by HUC14 Subwatershed

- Low*
- Moderate*
- High*
- Preservation Area
- Municipal Boundaries

**Alpha Borough**



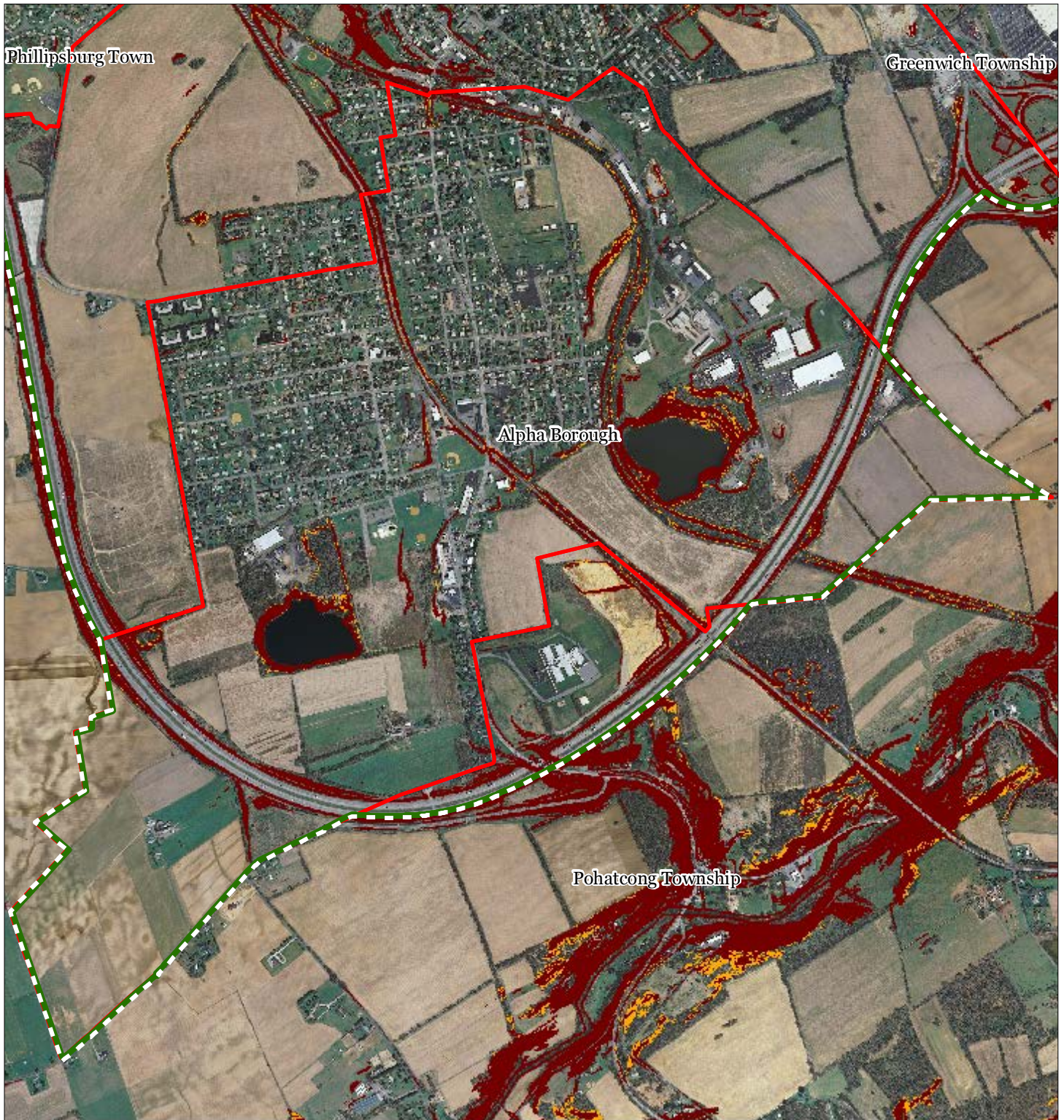
1 inch = 0.266 miles



SEPT 2011



## Exhibit L: Steep Slope Protection Areas



Steep Slope

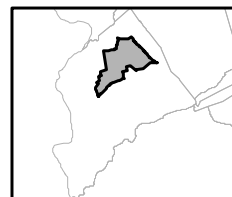
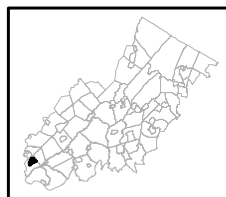
 Moderate

 Severe

 Preservation Area

 Municipal Boundaries

**Alpha Borough**



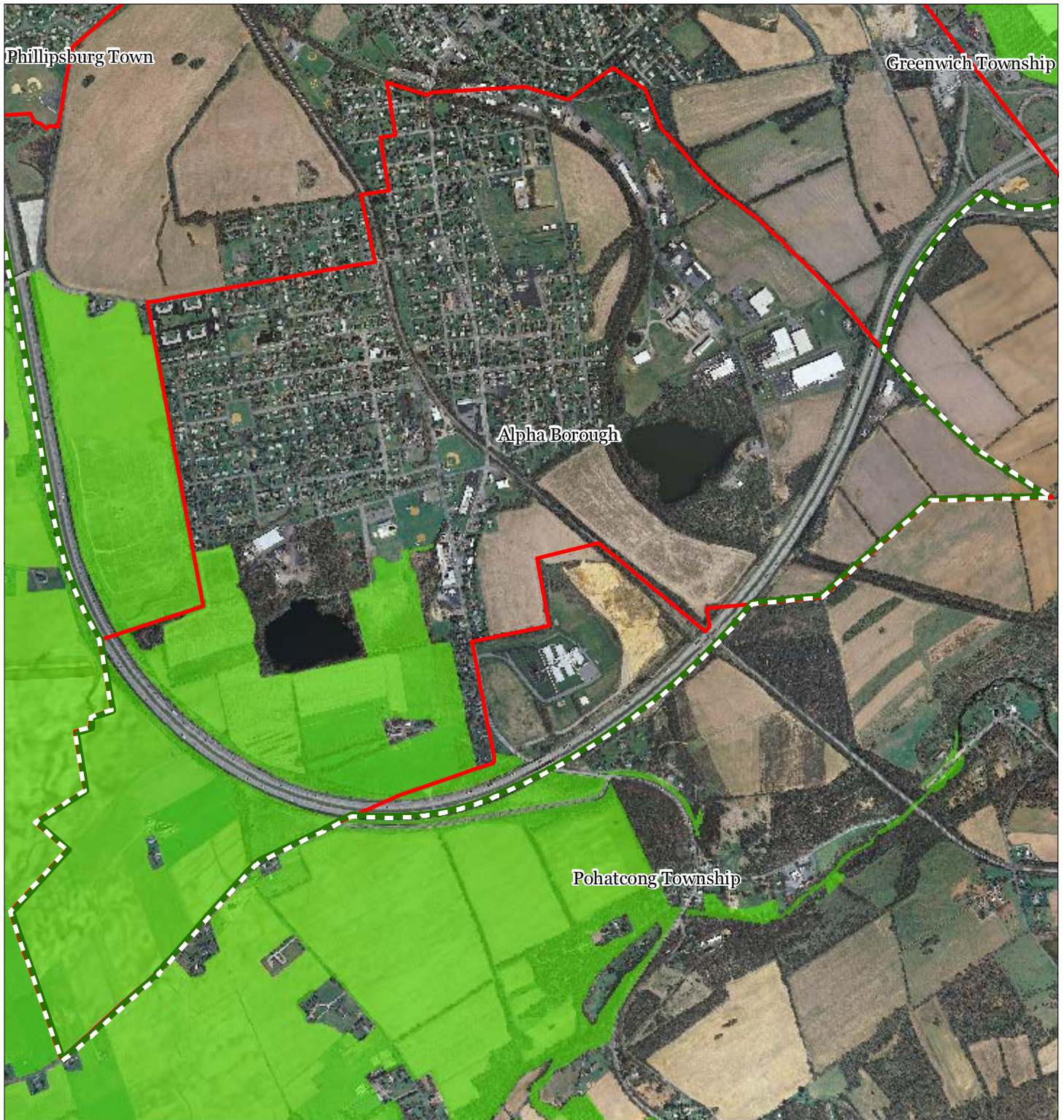
1 inch = 0.266 miles




  
Highlands Council  
New Jersey

SEPT 2011

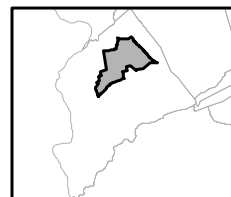
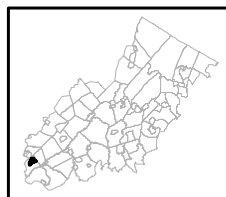


## Exhibit M: Critical Wildlife Habitat



-  Critical Wildlife Habitat
-  Preservation Area
-  Municipal Boundaries

### Alpha Borough

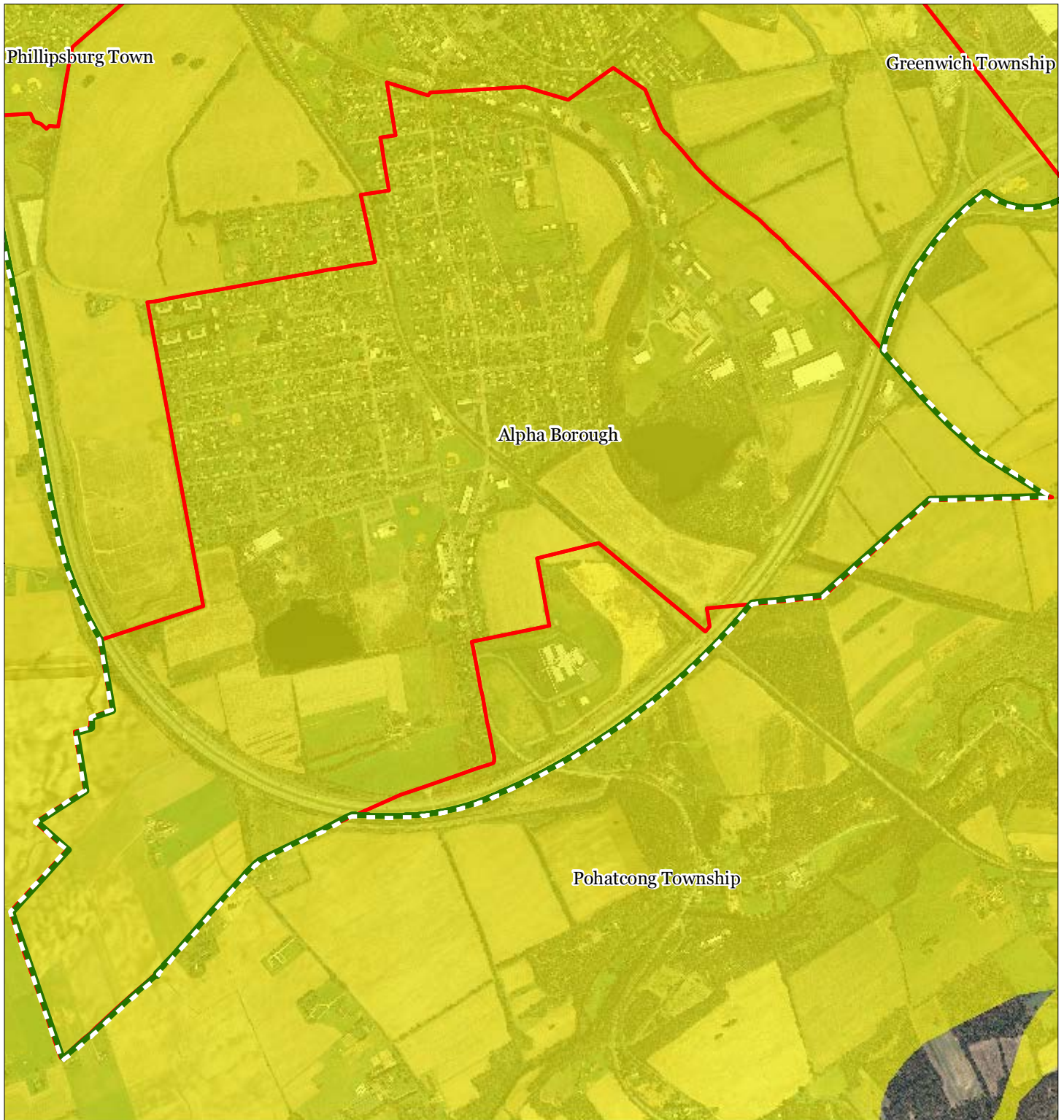





1 inch = 0.266 miles



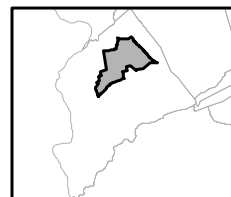
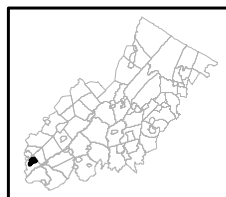


## Exhibit P: Carbonate Rock Area



-  Carbonate Rock Area
-  Preservation Area
-  Municipal Boundaries

### Alpha Borough

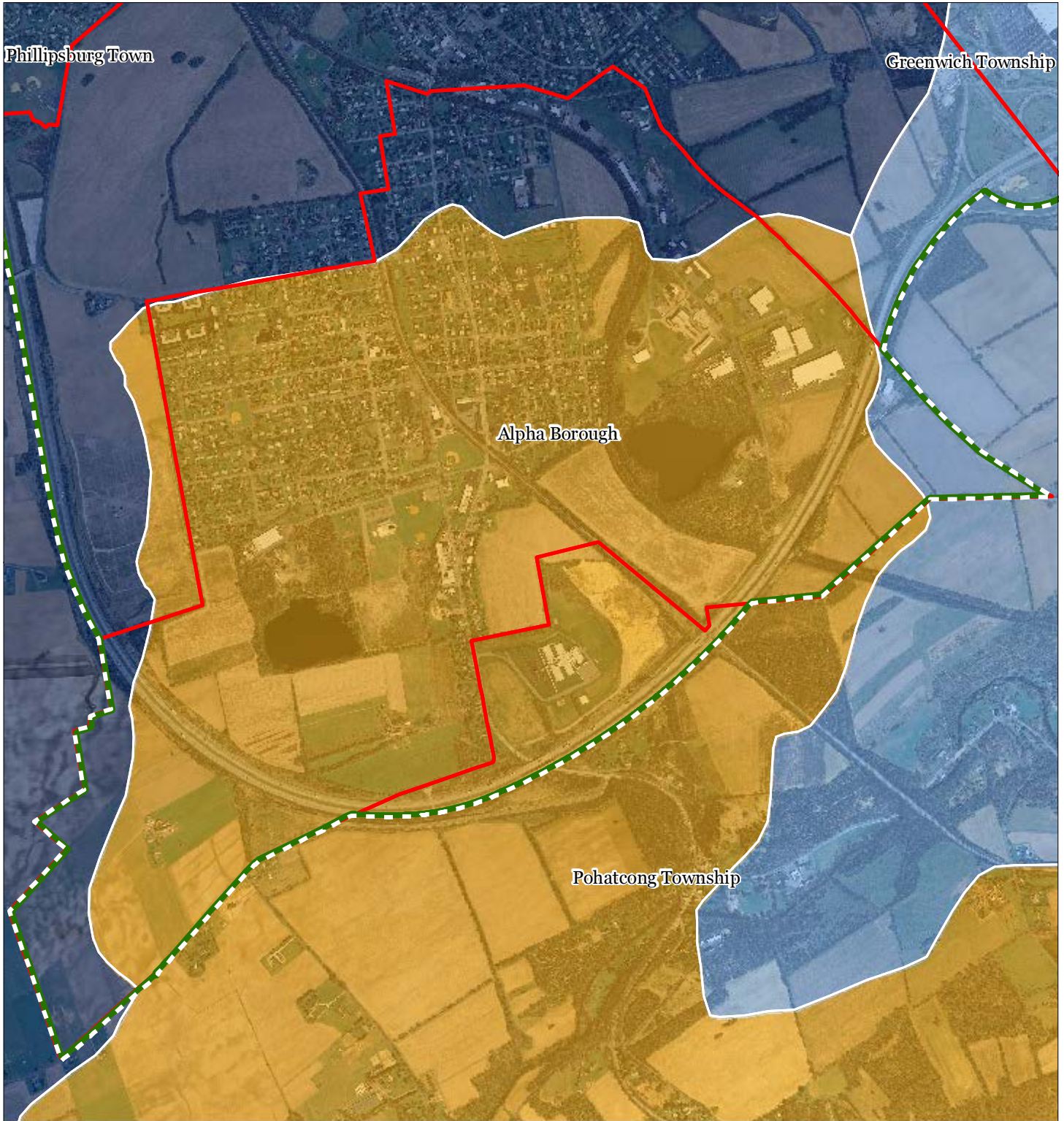


1 inch = 0.266 miles



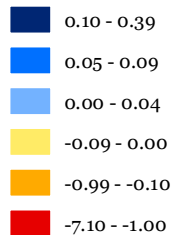




## Exhibit R: Net Water Availability



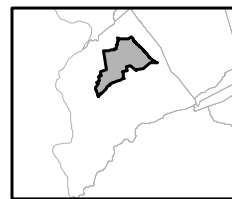
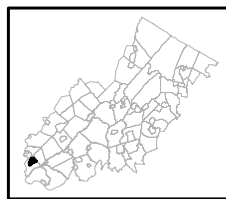
Net Water Availability By HUC14

Million Gallons Per Day (MGD)



 Preservation Area  
 Municipal Boundaries

## Alpha Borough



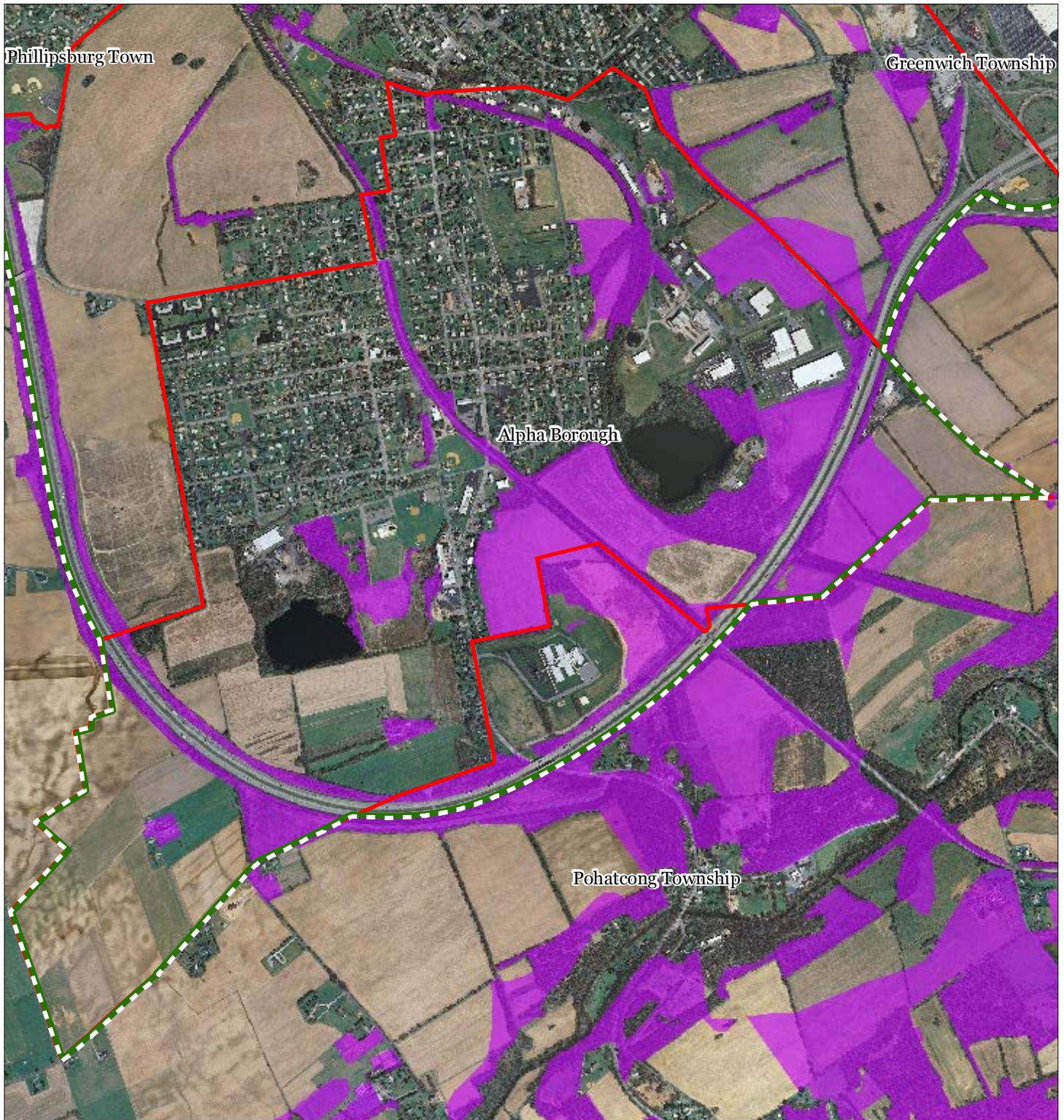
1 inch = 0.266 miles




  
Highlands Council  
New Jersey

SEPT 2011

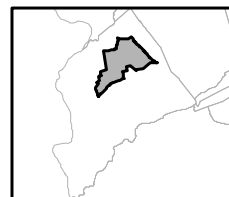
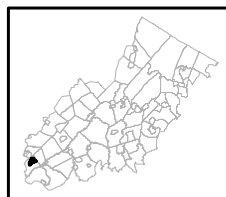


## Exhibit S: Prime Ground Water Recharge Areas



-  Prime Groundwater Recharge Areas
-  Preservation Area
-  Municipal Boundaries

**Alpha Borough**

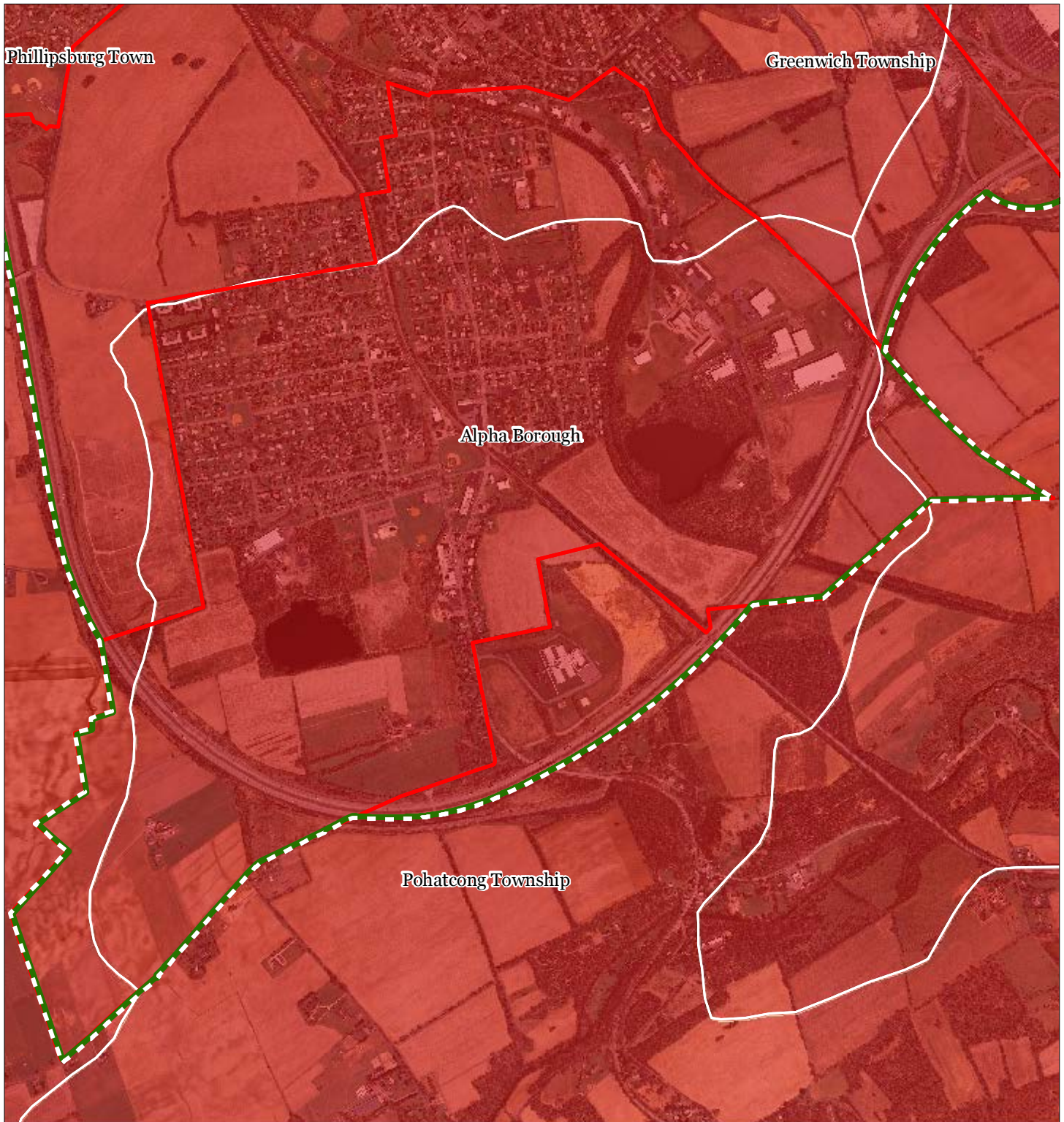


1 inch = 0.266 miles





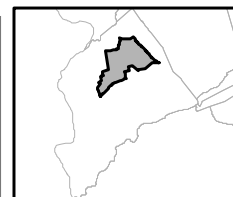
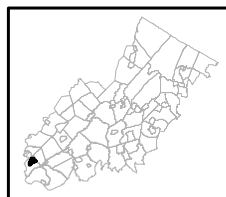
## Exhibit T: HUC 14s on NJDEP Impaired Waters List



Impaired Waters Overall Assessment by HUC14 Subwatershed

- Non Impacted
- Insufficient Data Available
- Moderate
- Water Quality Impaired
- Preservation Area
- Municipal Boundaries

**Alpha Borough**



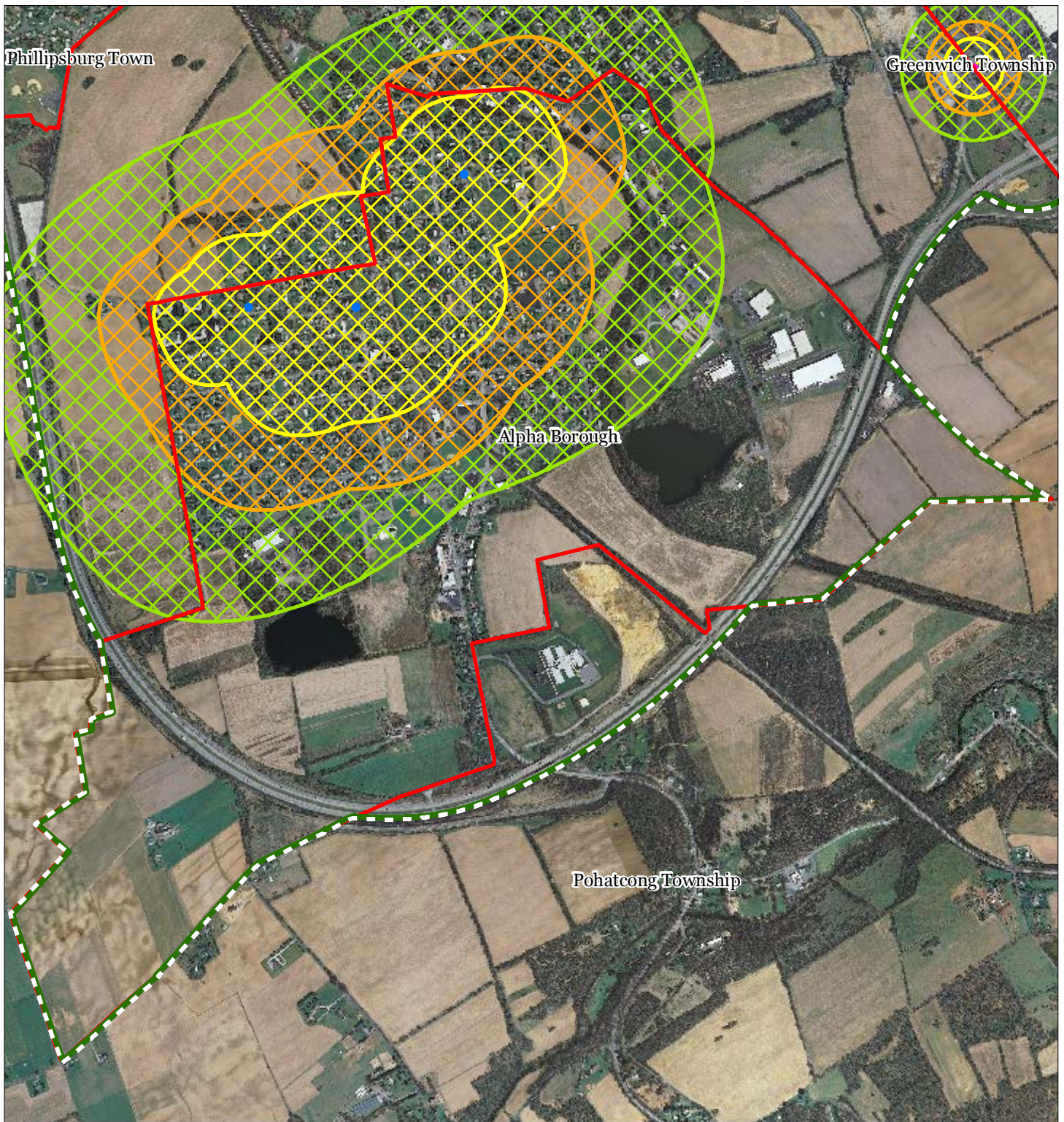
1 inch = 0.266 miles



SEPT 2011



## Exhibit U: Wellhead Protection Areas



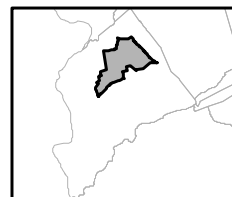
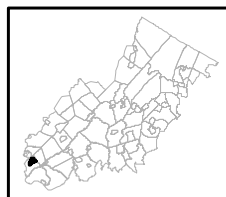
- Public Community Wells
- Public Non-Community Wells

### Wellhead Protection Areas

- 2-Year Tier
- 5-Year Tier
- 12-Year Tier

- Preservation Area
- Municipal Boundaries

## Alpha Borough



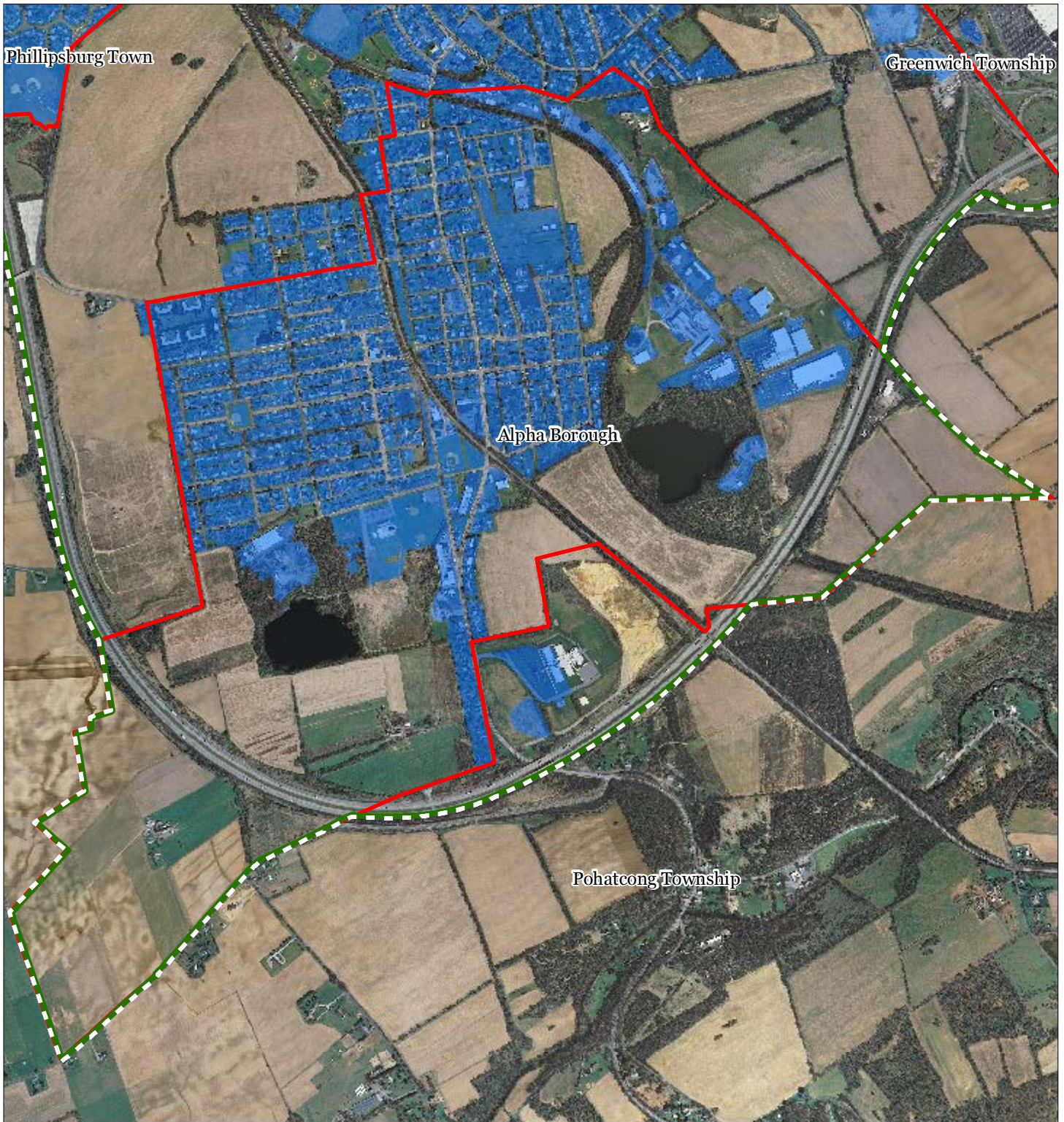
1 inch = 0.266 miles






SEPT 2011

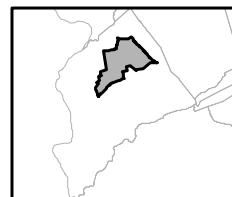
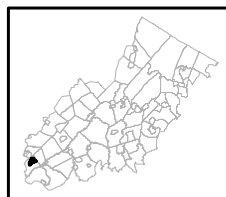


## Exhibit V: Public Community Water Systems



-  Public Community Water Systems
-  Preservation Area
-  Municipal Boundaries

**Alpha Borough**

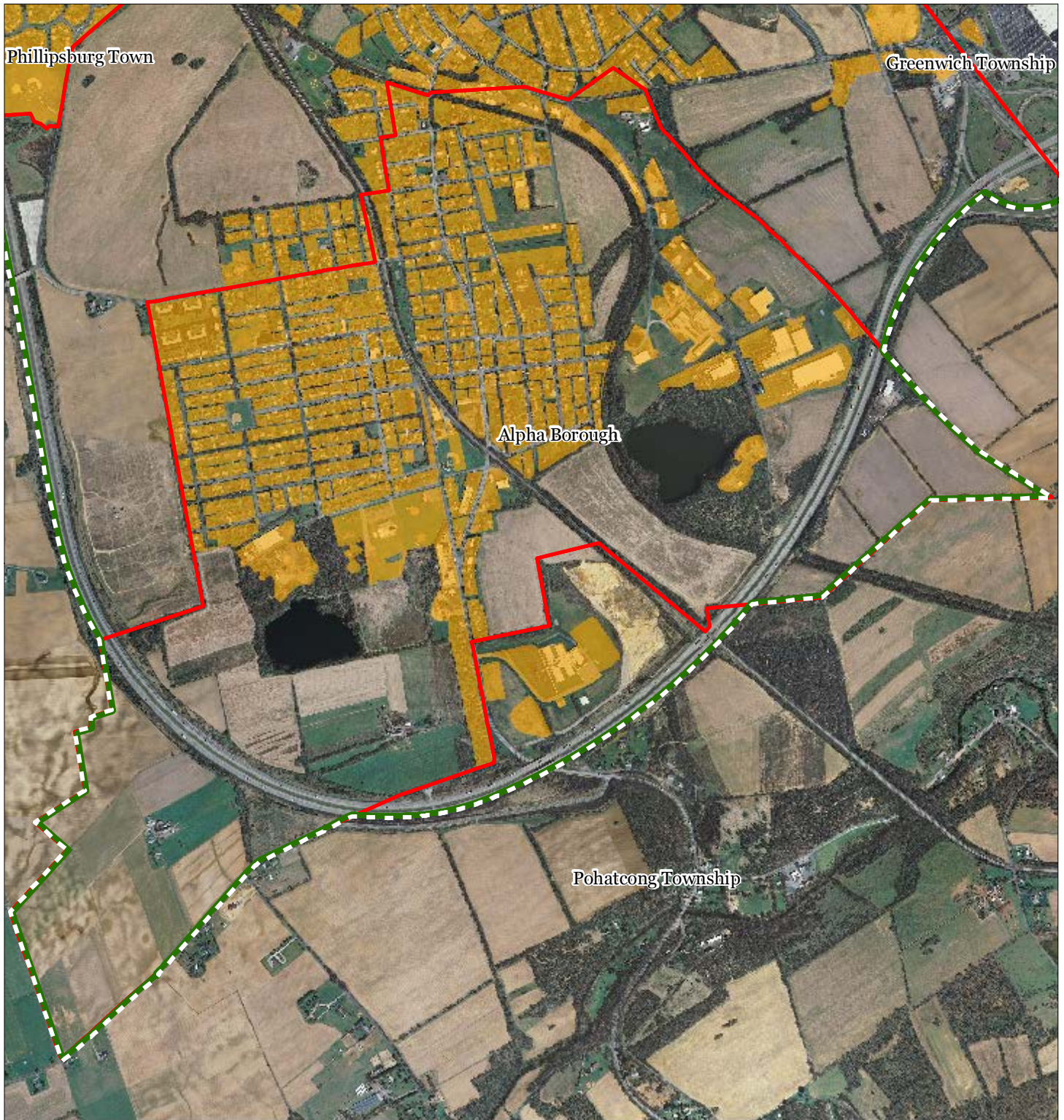


1 inch = 0.266 miles








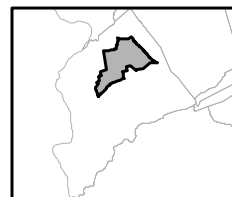
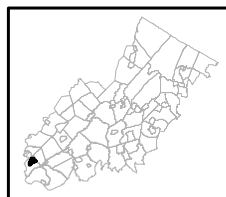
## Exhibit W: Highlands Domestic Sewerage Facilities



### Highlands Domestic Sewerage Facilities

-  Existing Area Served
-  Preservation Area
-  Municipal Boundaries

### Alpha Borough

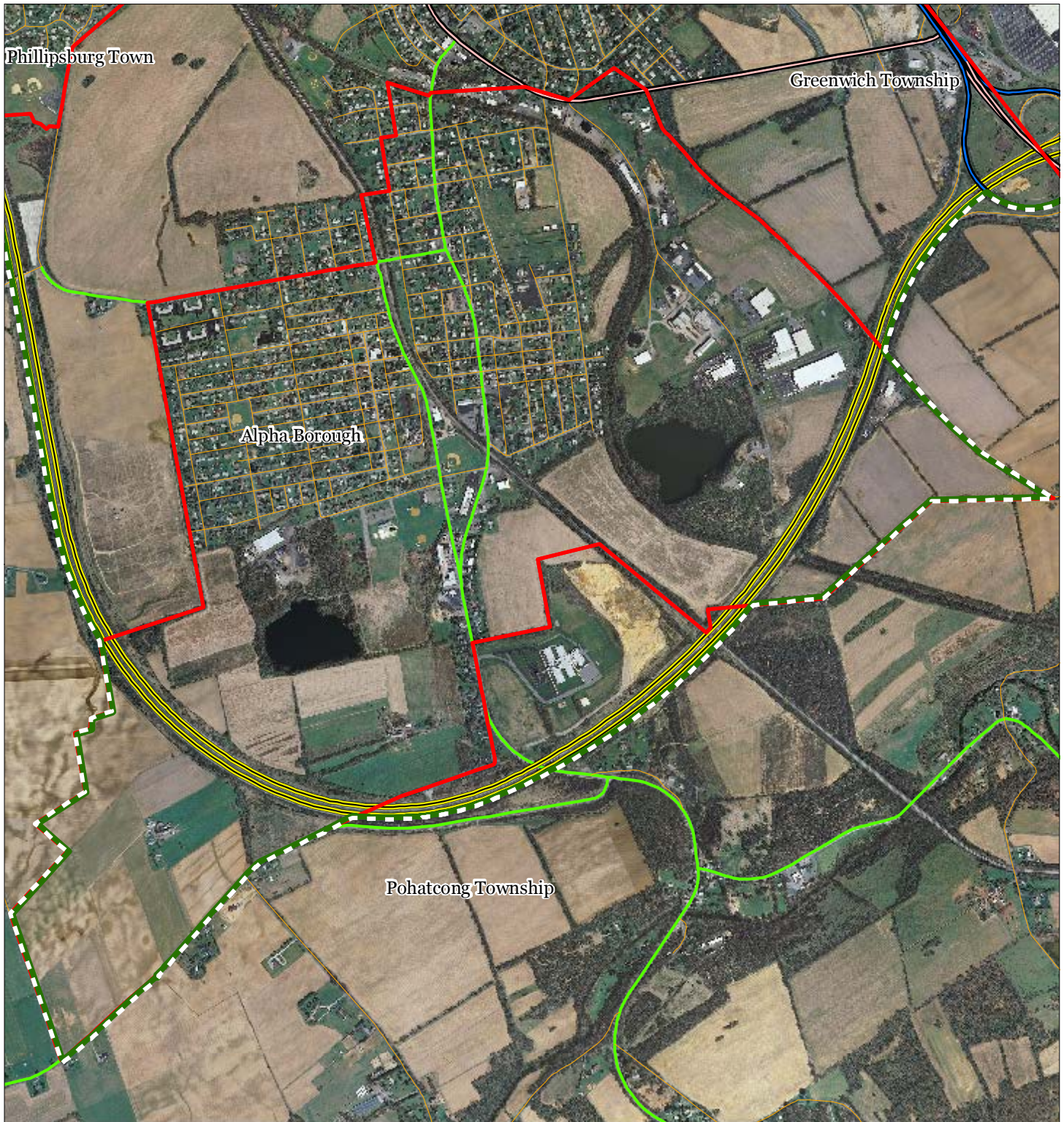


1 inch = 0.266 miles





## Exhibit Y: Highlands Roadway Network



### Roadway Network

— Interstate Highways

— U.S. Routes

— State Routes

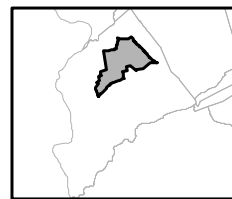
— County Routes

— Local Routes

— Preservation Area

— Municipal Boundaries

### Alpha Borough



1 inch = 0.266 miles

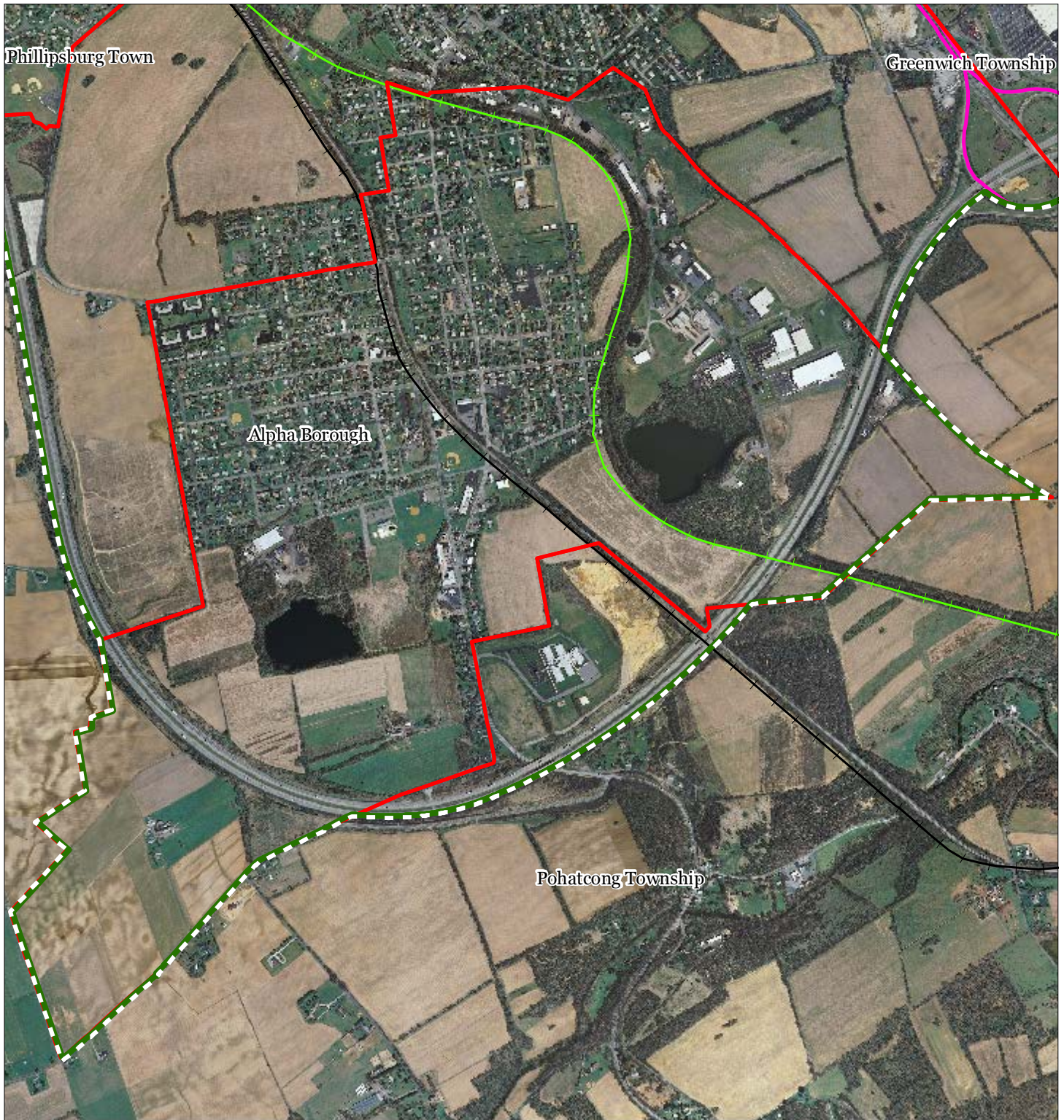
**Highlands Council**  
New Jersey



SEPT 2011

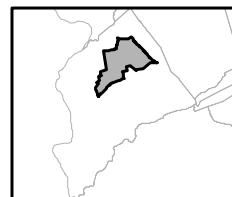
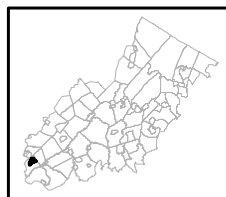


# Exhibit Z: Highlands Transit Network



- |                                |                      |
|--------------------------------|----------------------|
| <b>Rail Network</b>            | Rail Stations        |
| Boonton Line                   | Park and Ride Sites  |
| Main Line & Bergen County Line | Private Bus Lines    |
| Morris and Essex Line          | NJ Transit Bus Lines |
| Raritan Valley Line            | Airports             |
| <b>Freight Rail Lines</b>      |                      |
| Freight Rail Lines             |                      |
| Abandoned Freight Rail         |                      |

## Alpha Borough



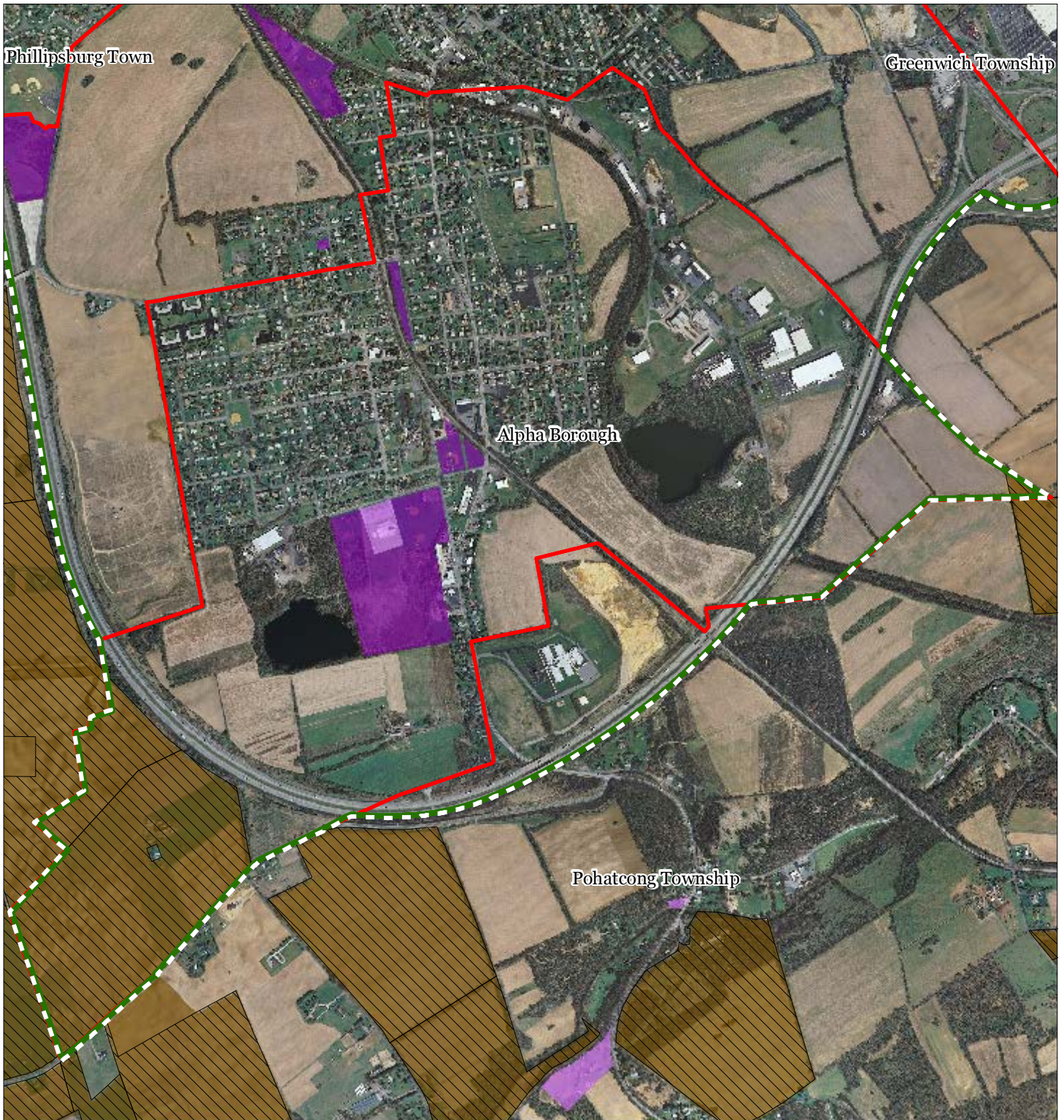
1 inch = 0.266 miles



SEPT 2011

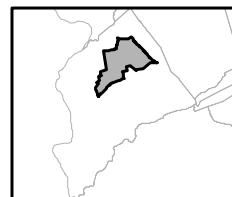
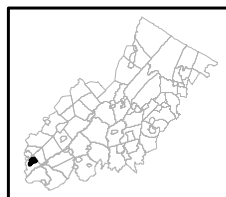


# Exhibit AA: Preserved Lands



- |   |                               |
|---|-------------------------------|
| <b>Preserved Lands</b>                  | <b>Conservation Easements</b> |
| Federal Open Space                      | Green Acres                   |
| State Open Space                        | <b>SADC Easements</b>         |
| County Open Space                       | SADC Final                    |
| Municipal Open Space                    | SADC Preserved                |
| Non-Profit/Private Open Space           | Municipal Boundaries          |
| Water Supply Watershed Lands            | Preservation Area             |
| Preserved Farmland                      |                               |
| Highlands Transfer of Development Lands |                               |

## Alpha Borough



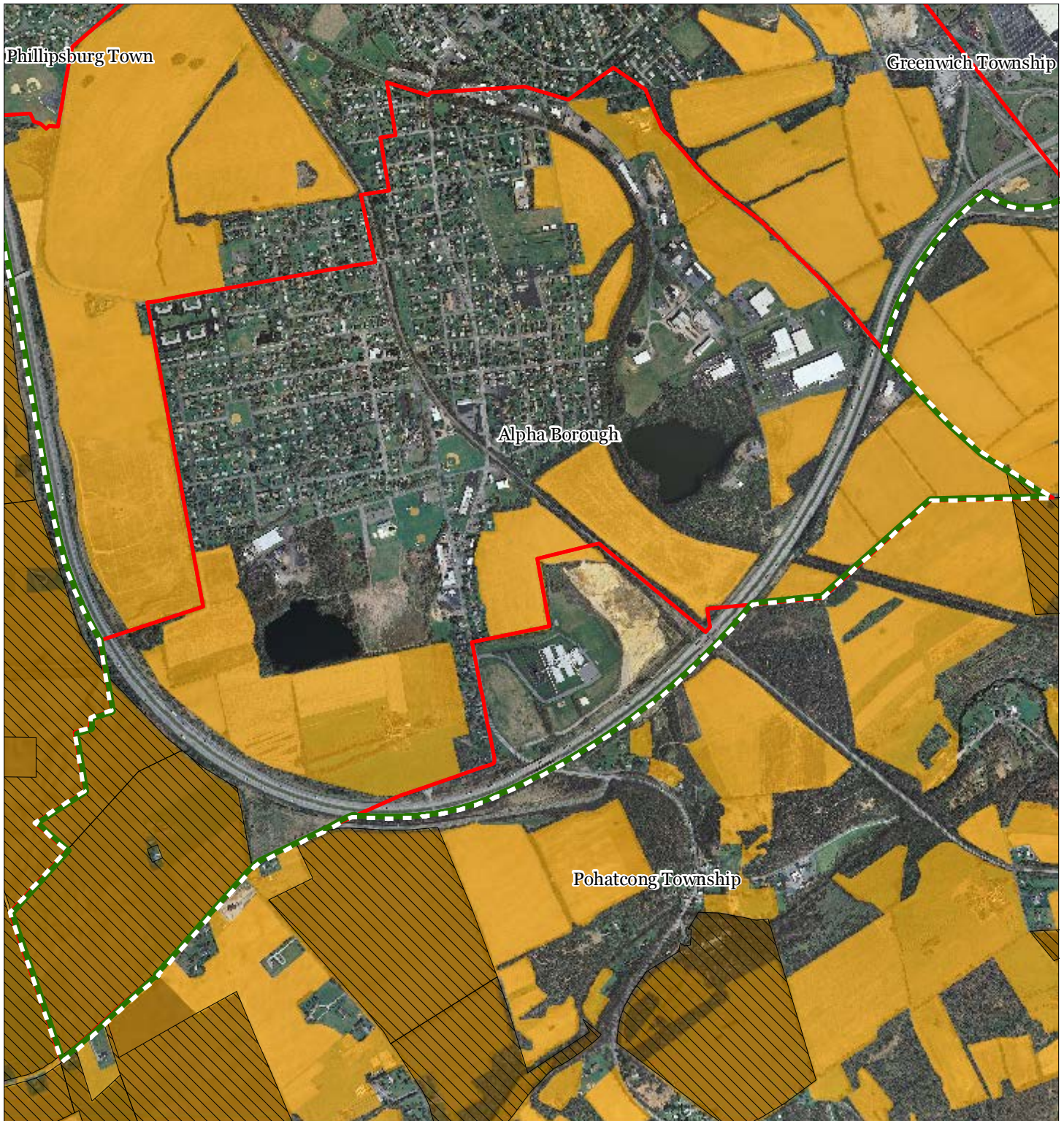
1 inch = 0.266 miles



SEPT 2011



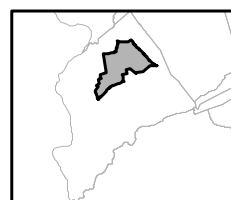
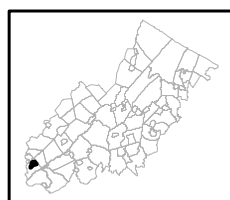
## Exhibit DD: Preserved Farms, SADC Easements, All Agricultural Uses



### SADC Easements

-  *SADC Final*
-  *SADC Preserved*
-  Preserved Farmland
-  Agriculture Uses
-  Preservation Area
-  Municipal Boundaries

### Alpha Borough

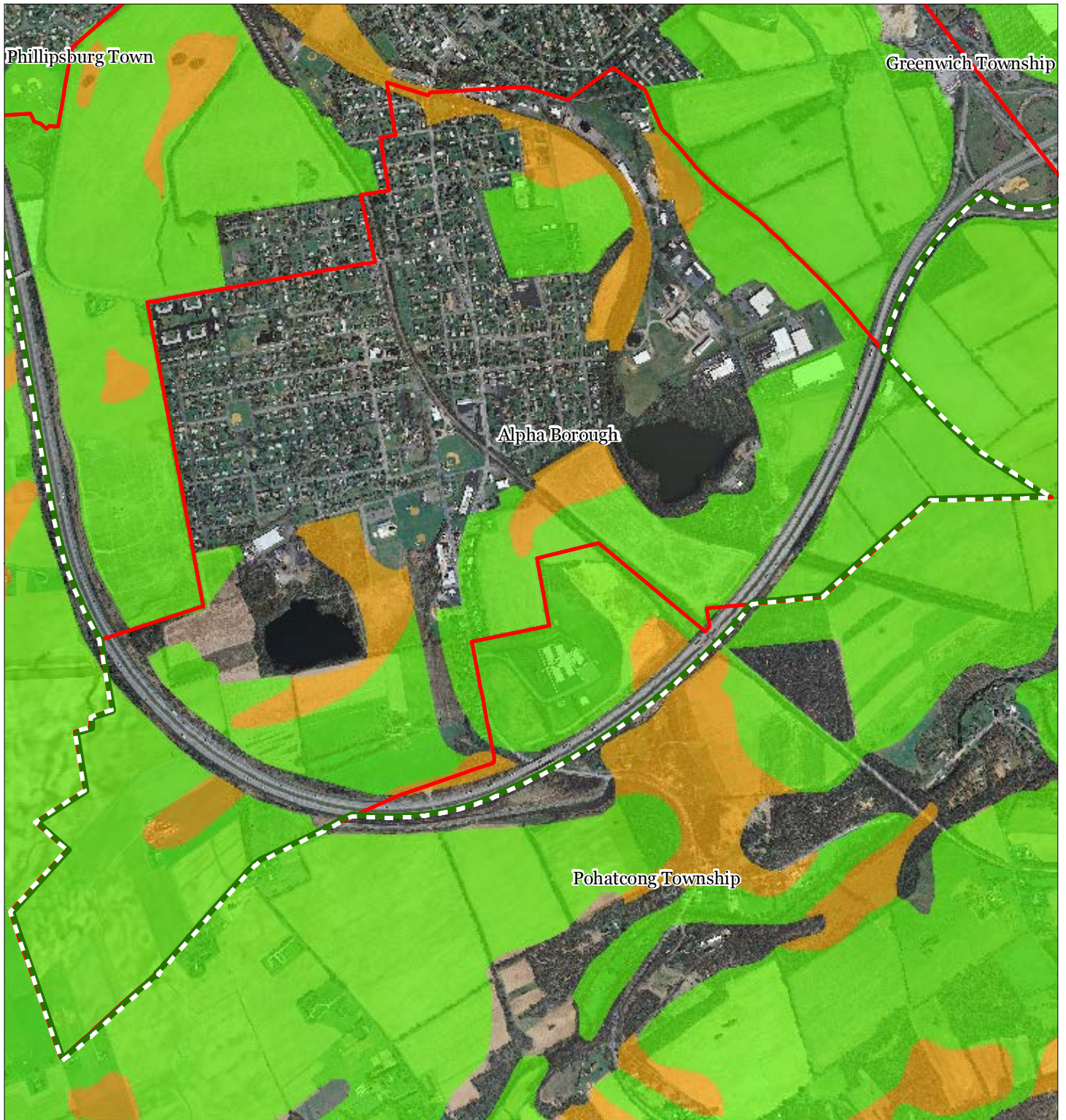


1 inch = 0.266 miles





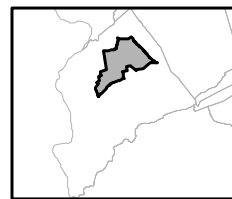
## Exhibit EE: Important Farmland Soils



### Important Farmland Soils

- Prime Farmland
- Farmland of Local Importance
- Farmland of Statewide Importance
- Farmland of Unique Importance
- Preservation Area
- Municipal Boundaries

### Alpha Borough



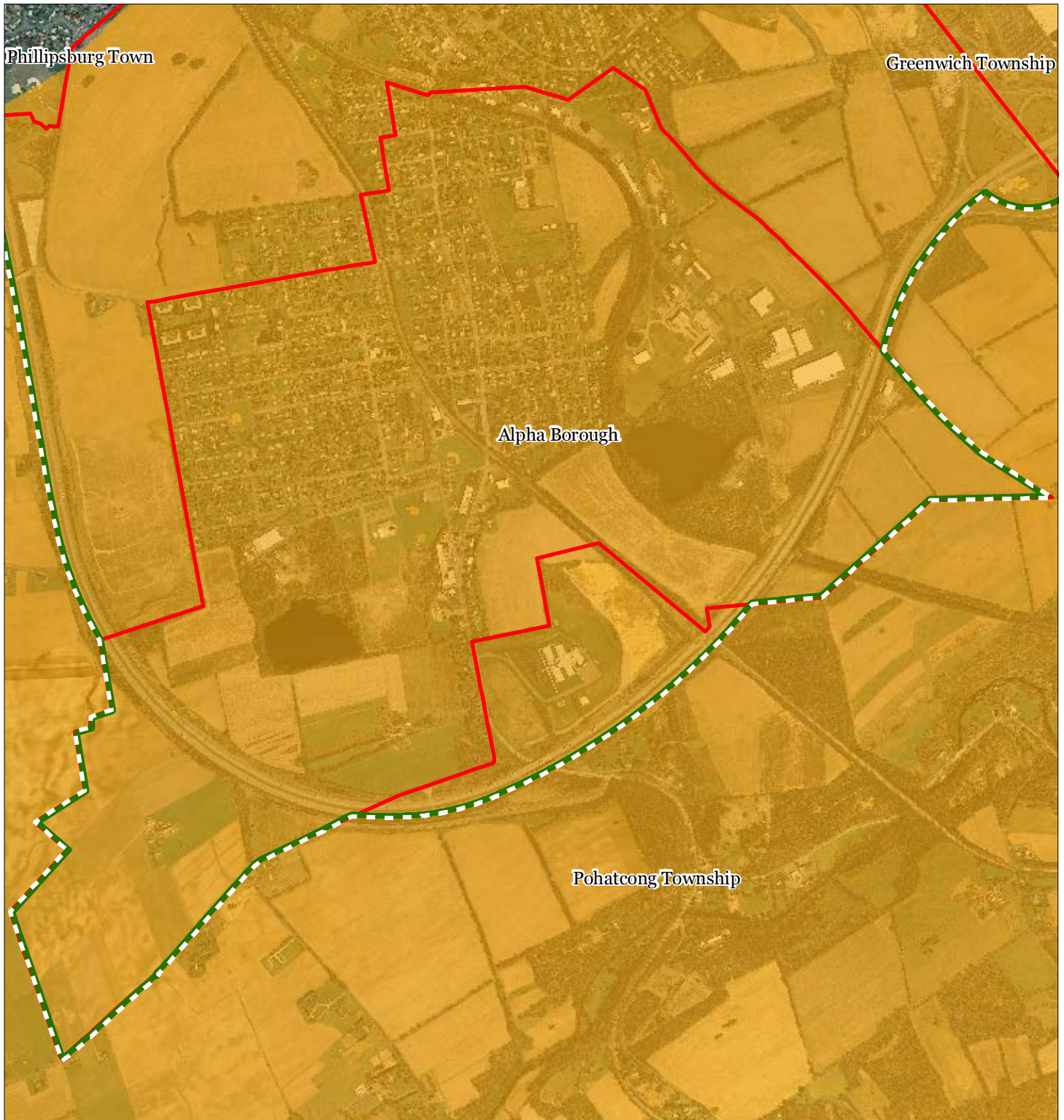
1 inch = 0.266 miles






SEPT 2011

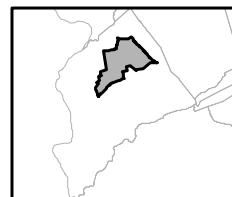
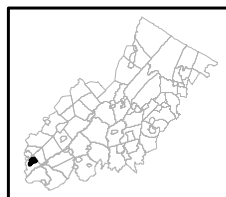


## Exhibit FF: Agricultural Resource Area



-  Agricultural Resource Area
-  Preservation Area
-  Municipal Boundaries

### Alpha Borough

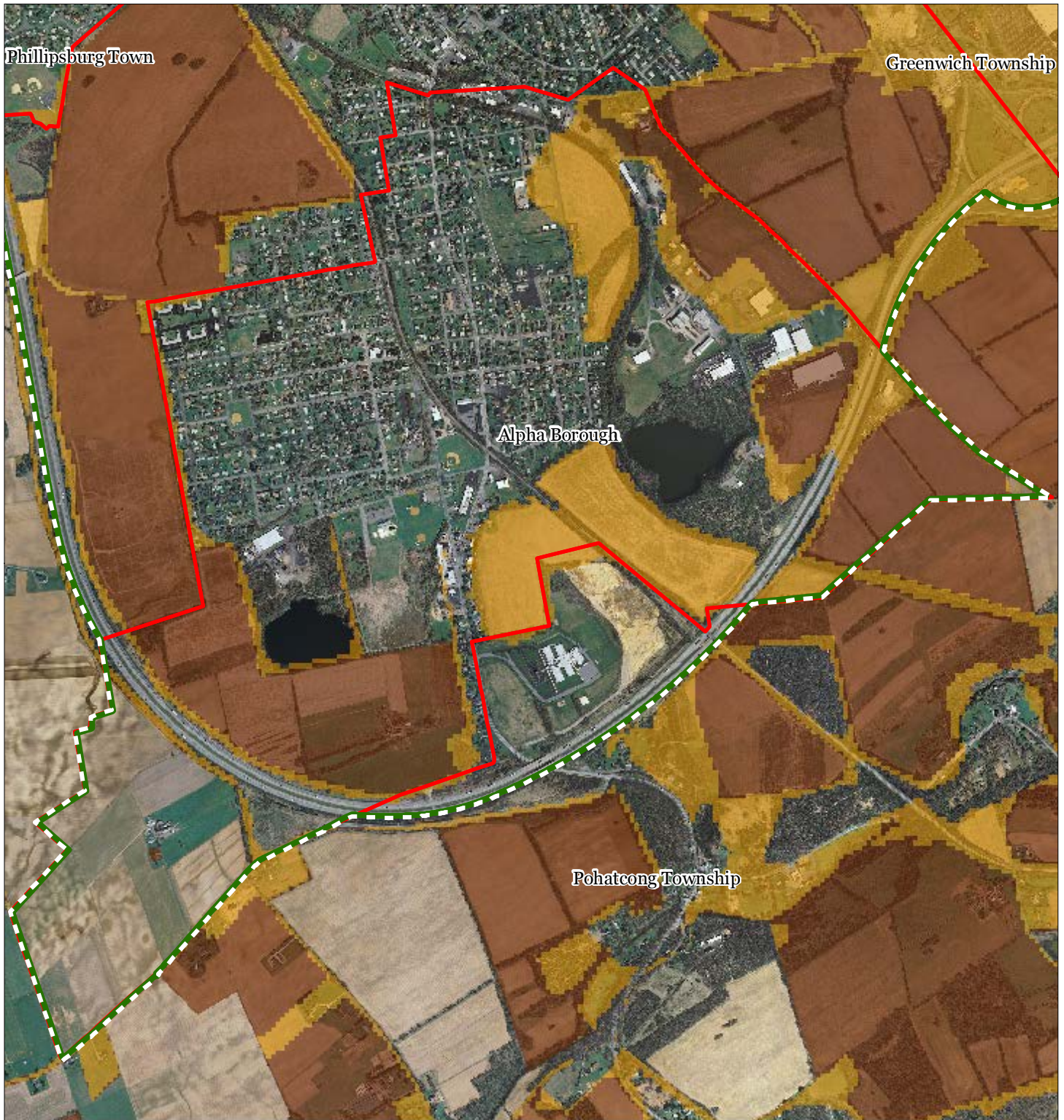


1 inch = 0.266 miles









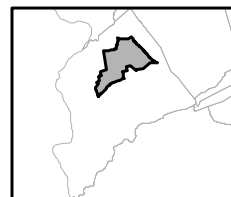
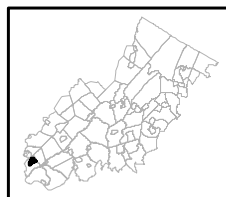
## Exhibit GG: Agricultural Priority Area



Agricultural Priority Area

-  Moderate
-  High
-  Preservation Area
-  Municipal Boundaries

**Alpha Borough**



1 inch = 0.266 miles

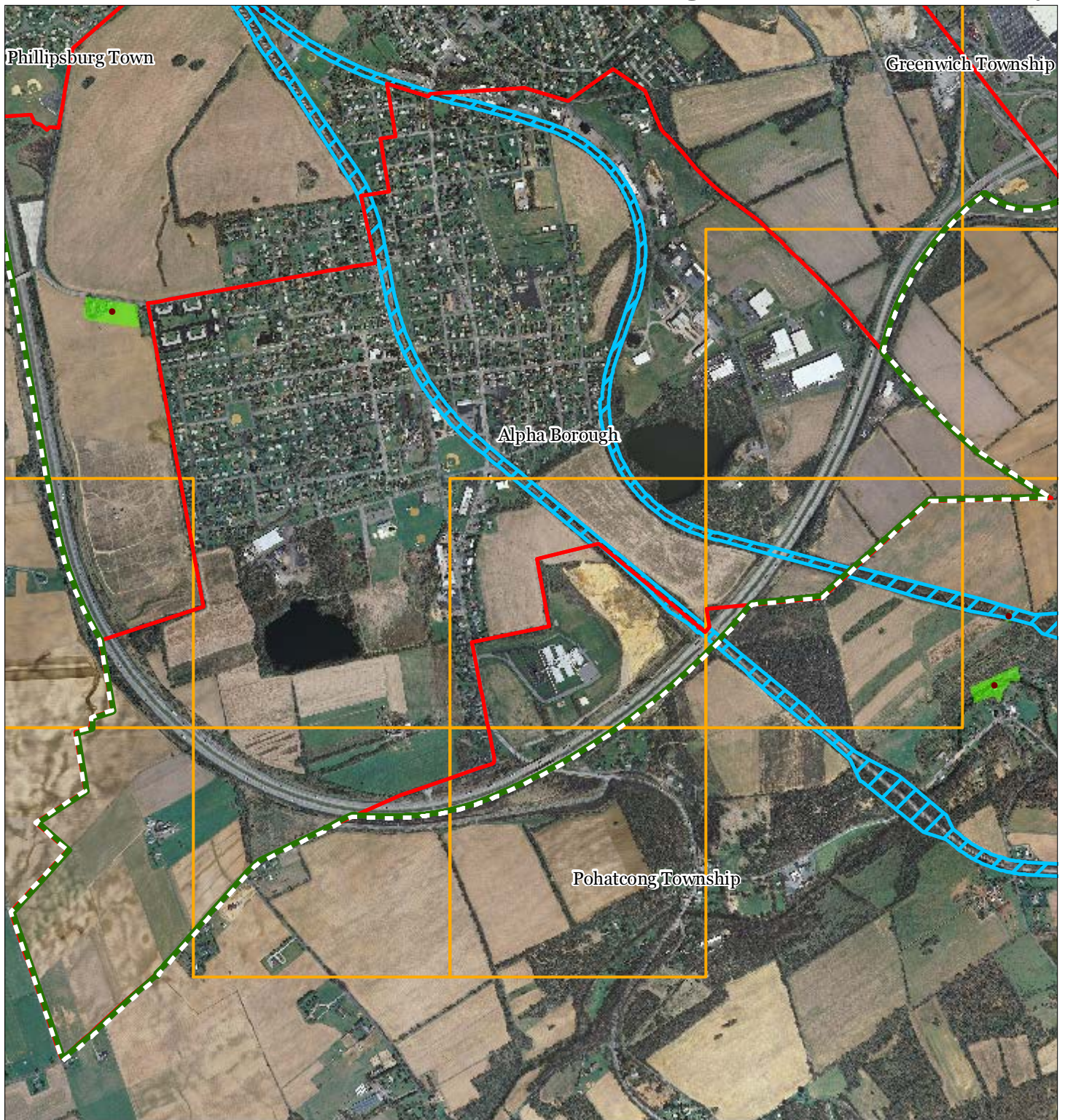
**Highlands Council**  
New Jersey



SEPT 2011

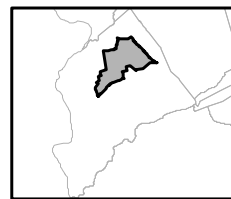
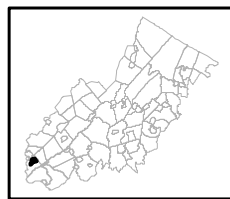


## Exhibit HH: Historic, Cultural, and Archaeological Resources Inventory



-  Preservation Area
-  Municipal Boundaries
-  Archaeological Grids (1 sqmi)
-  NJ Historic Districts
-  Historic Property Points
-  Historic Property Polygons

### Alpha Borough

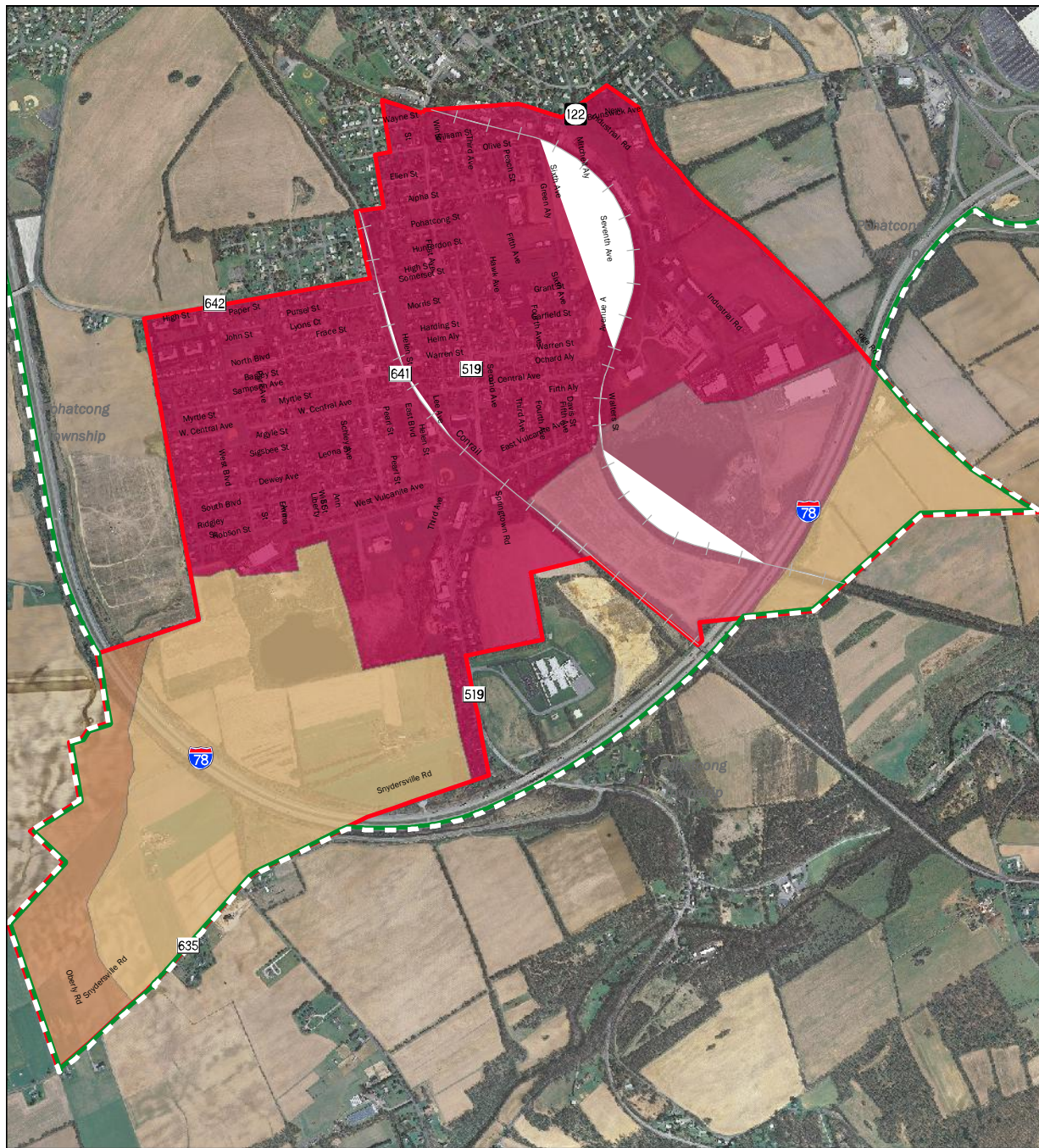


1 inch = 0.266 miles





## Exhibit II. SDRP Planning Areas

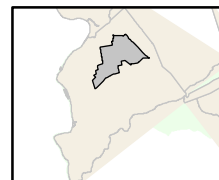


**2001 State Plan Policy Designation**

**ALPHA BOROUGH**

Planning Areas

- Metropolitan
- Suburban
- Rural
- Rural/Environmentally Sensitive
- Municipal Boundary
- Preservation Area



1 in = 0.334 miles

**Highlands Council**  
New Jersey

N