

Figure 1: **Phillipsburg Planning Area**



-  Preservation Area
-  Municipal Boundaries

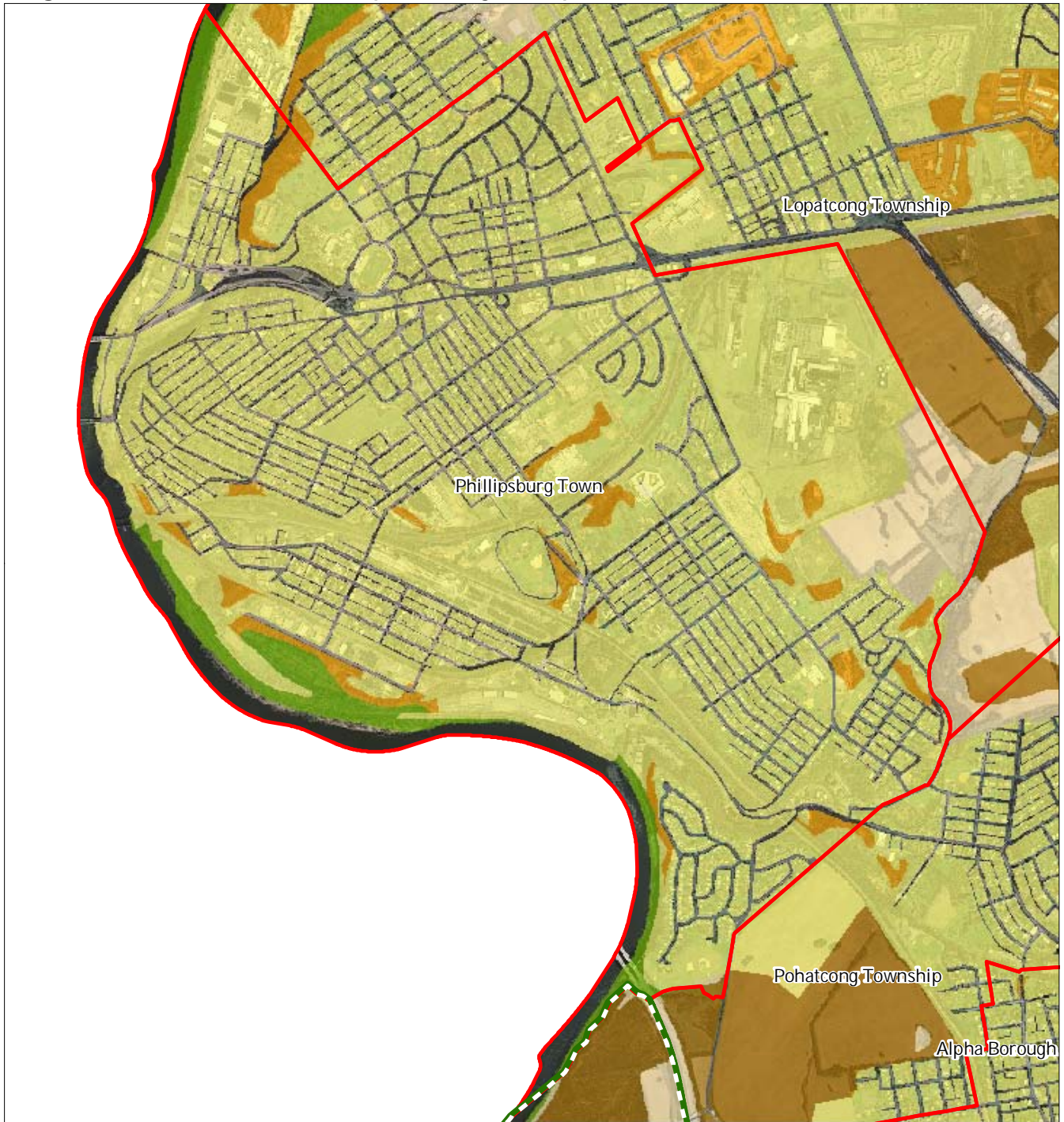
Phillipsburg Town



1 inch = 0.332 miles



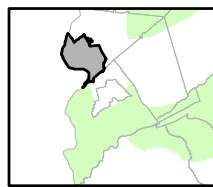
Figure 2: Land Use Capability Map Zones



Regional Master Plan Overlay Zone Designation

- | | |
|--|---|
|  Protection |  Lakes Greater Than 10 acres |
|  Conservation |  Preservation Area |
|  Existing Community |  Municipal Boundaries |
- Sub-Zone
-  Existing Community Environmentally Constrained
 -  Conservation Environmentally Constrained
 -  Lake Community
 -  Wildlife Management

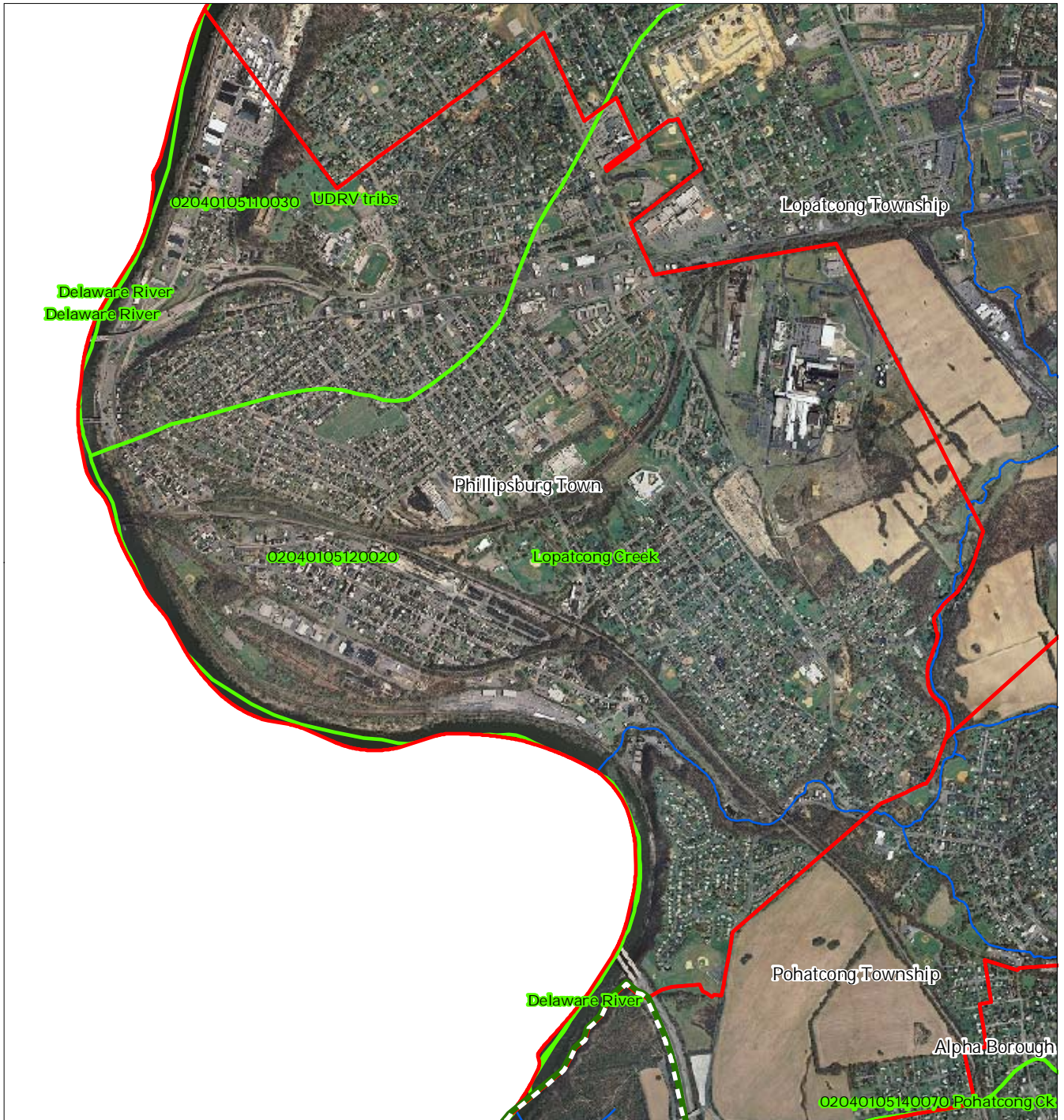
Phillipsburg Town







1 inch = 0.332 miles

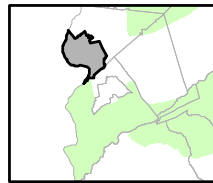


Figure 3: HUC 14 Boundaries



-  HUC 14 Subwatersheds
-  Stream Centerlines
-  Preservation Area
-  Municipal Boundaries

Phillipsburg Town






1 inch = 0.332 miles

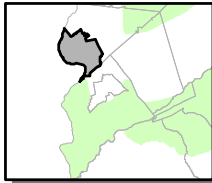


Figure 4: Forest Resource Area



-  Forest Resource Area
-  Preservation Area
-  Municipal Boundaries

Phillipsburg Town






1 inch = 0.332 miles

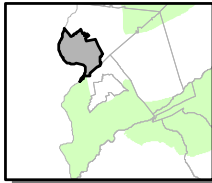


Figure 5: Total Forest Area



-  Forested Areas
-  Preservation Area
-  Municipal Boundaries

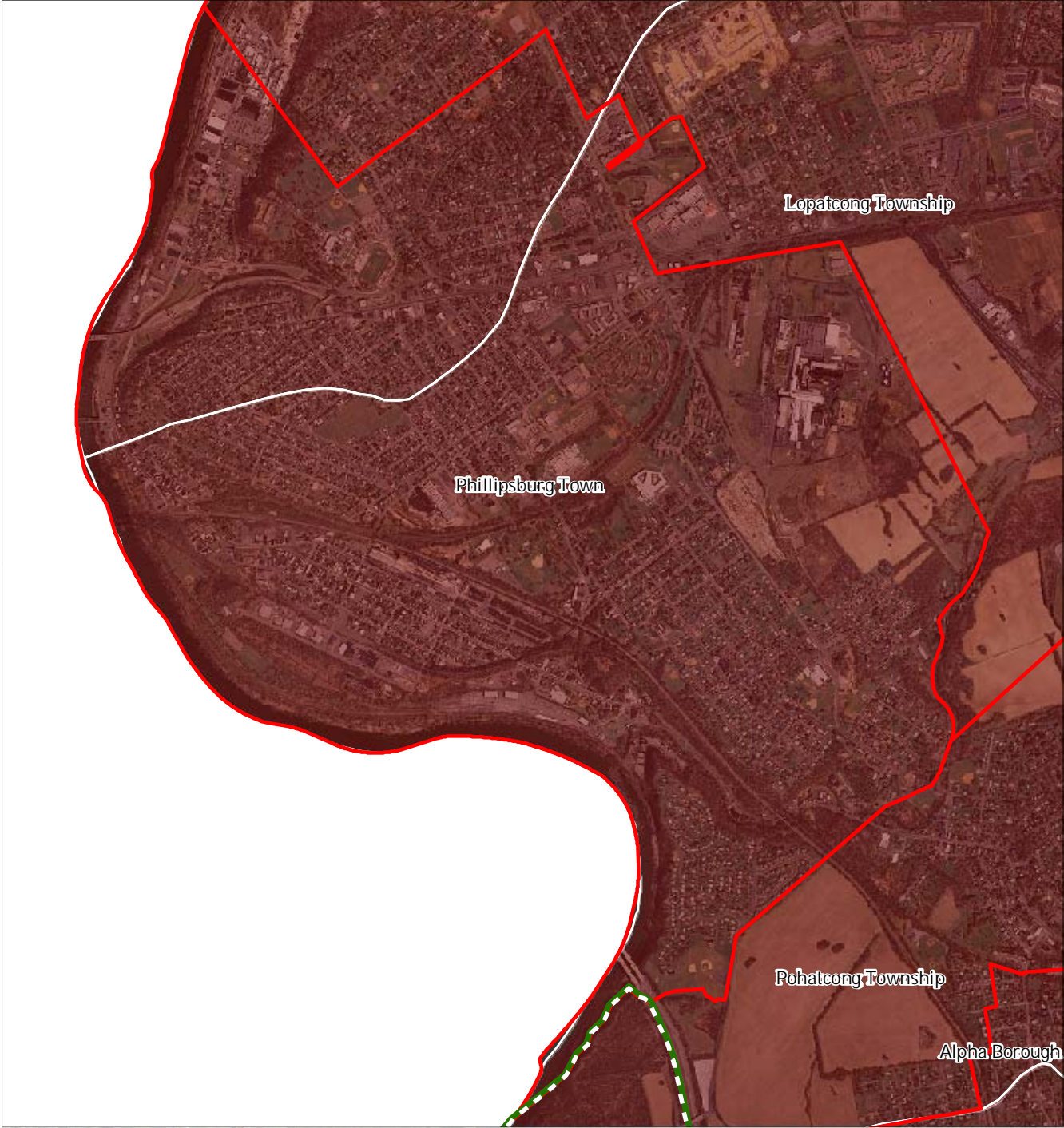
Phillipsburg Town



1 inch = 0.332 miles



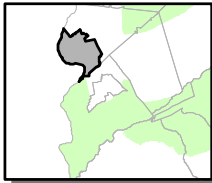
Figure 6: Forest Subwatersheds



Forest Integrity by HUC14 Subwatershed

- Low*
- Moderate*
- High*
- Preservation Area
- Municipal Boundaries

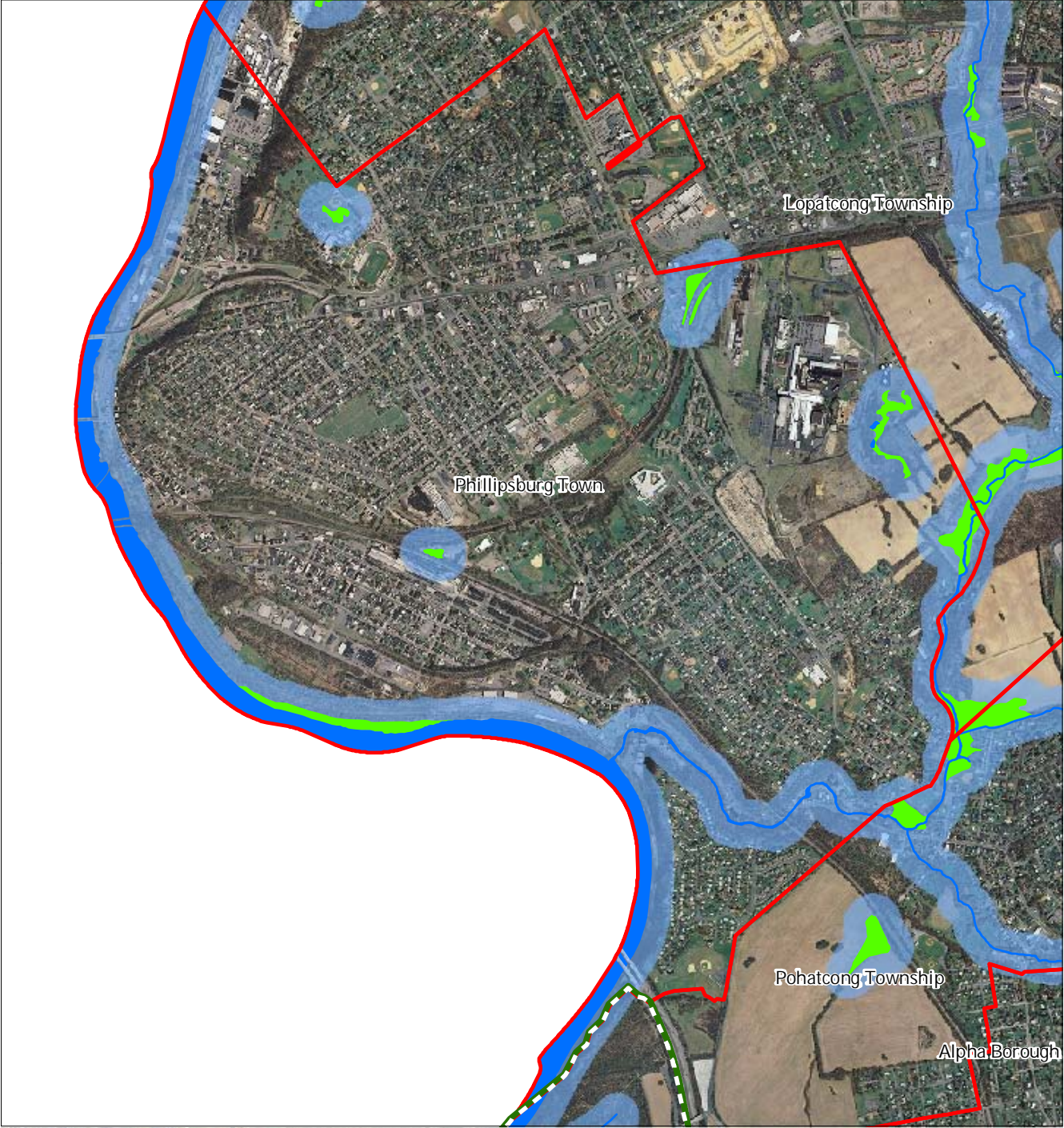
Phillipsburg Town



1 inch = 0.332 miles

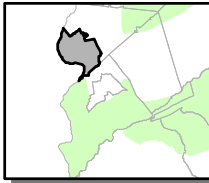


Figure 7: Highlands Open Waters



-  Highlands Open Water Buffers (300ft)
-  Streams
-  Wetlands
-  Lakes & Ponds
-  Preservation Area
-  Municipal Boundaries

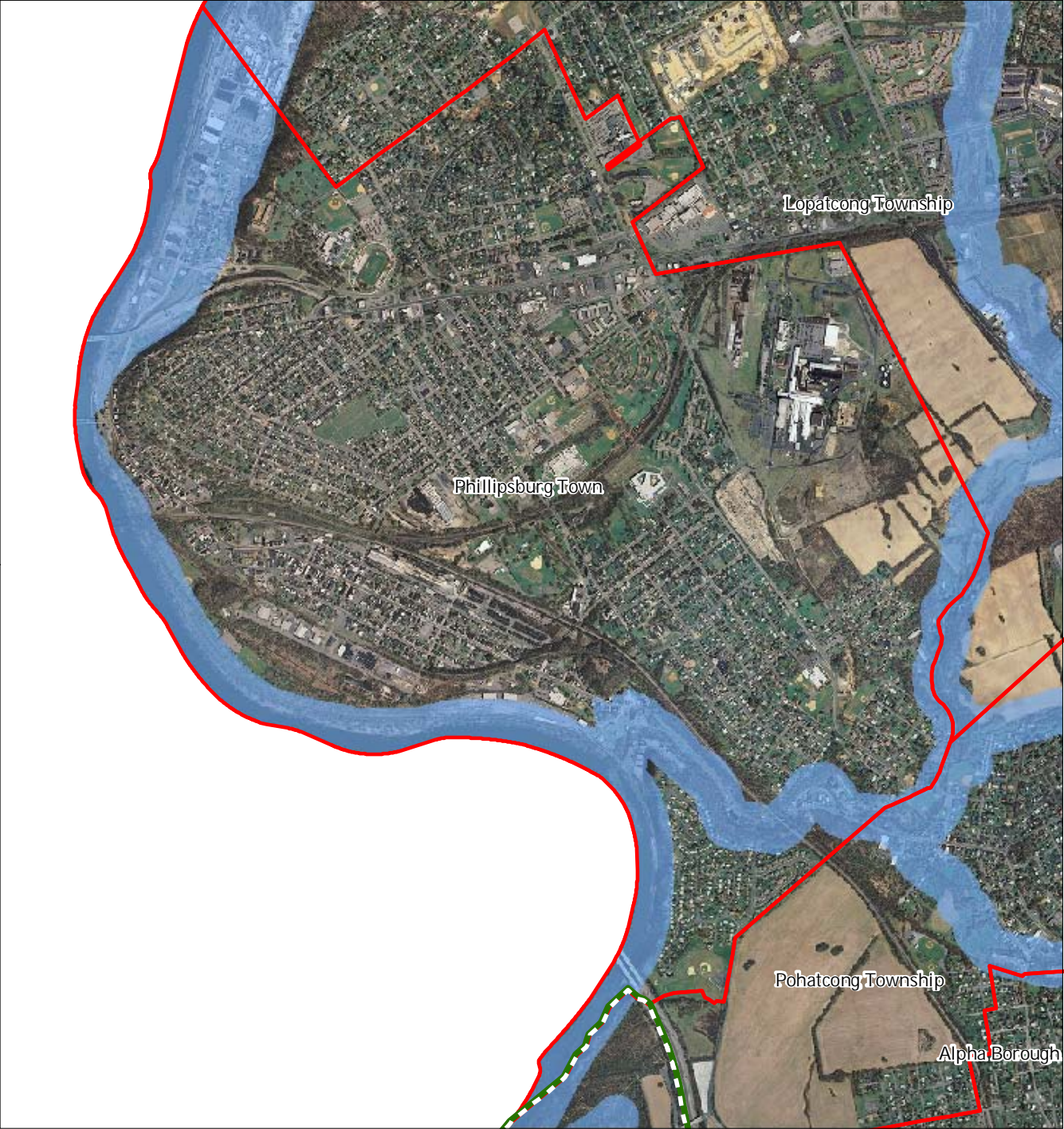
Phillipsburg Town

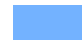




1 inch = 0.332 miles



Figure 8: Highlands Riparian Area



-  Riparian Area
-  Preservation Area
-  Municipal Boundaries

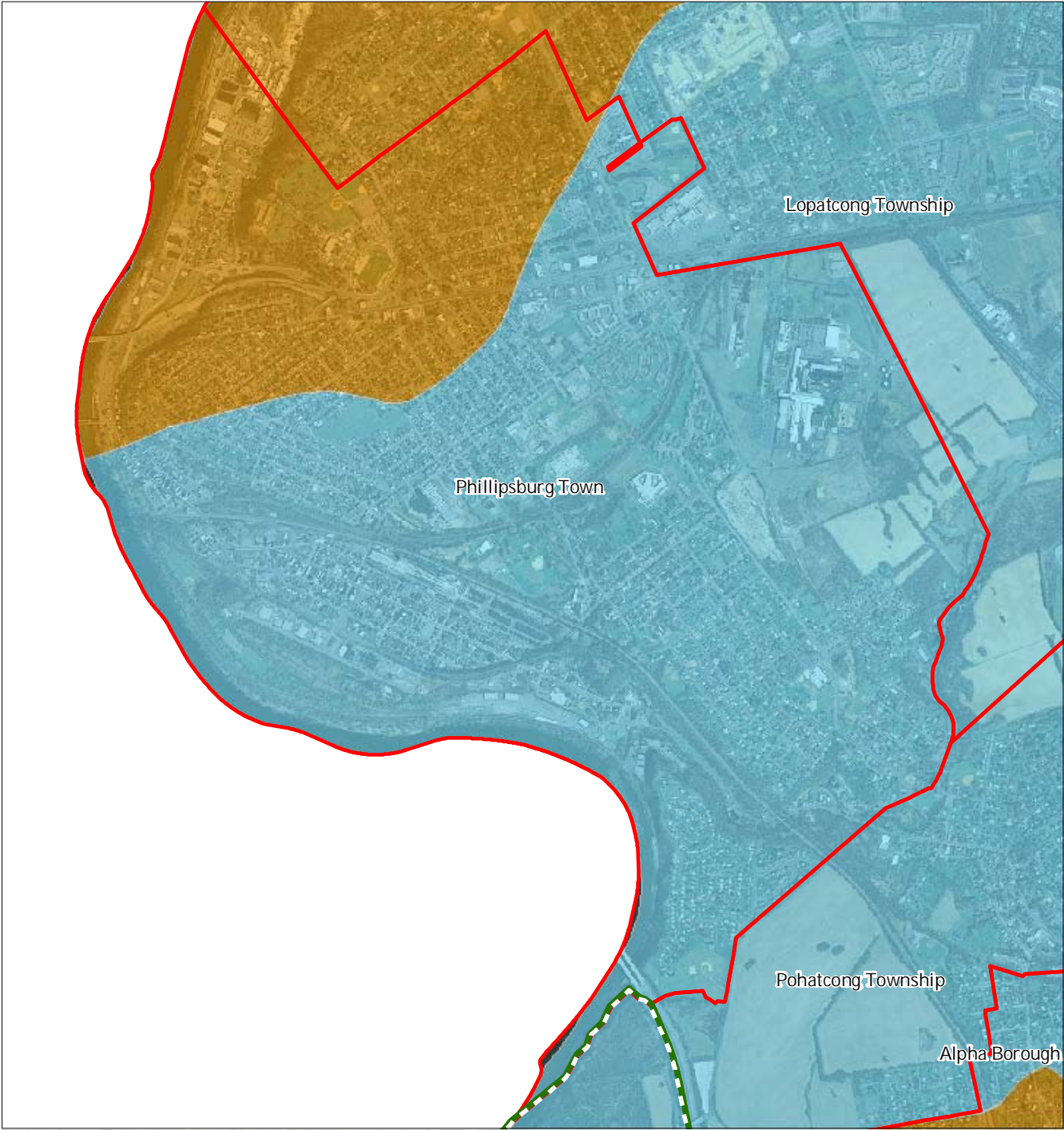
Phillipsburg Town



1 inch = 0.332 miles



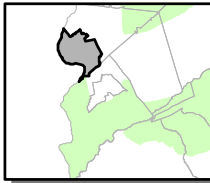
Figure 9: Watershed Values



Watershed Values by HUC14 Subwatershed

- Low
- Moderate
- High
- Preservation Area
- Municipal Boundaries

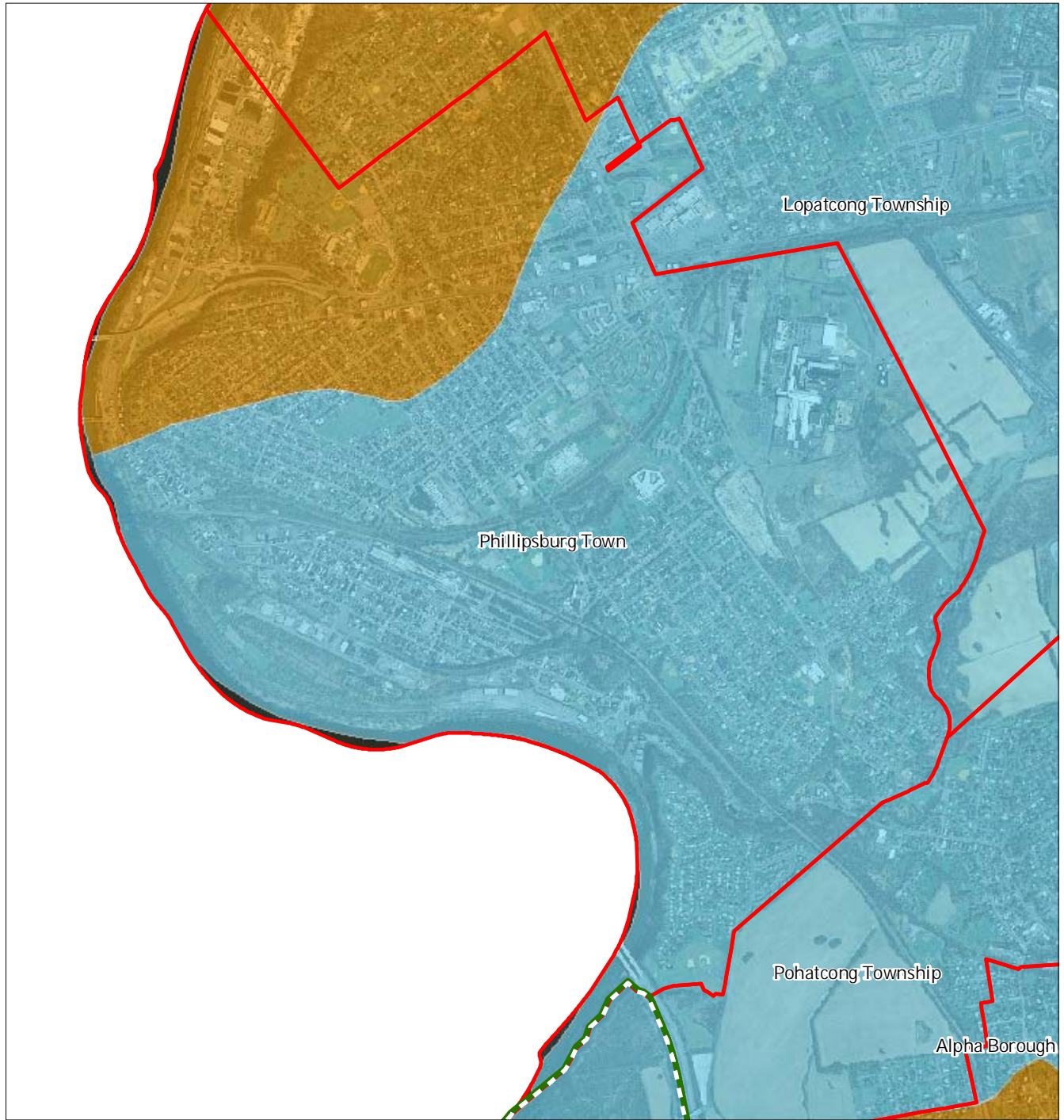
Phillipsburg Town






1 inch = 0.332 miles



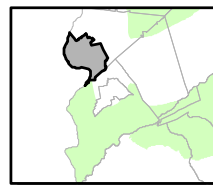
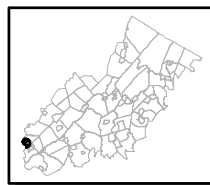
Figure 10: Riparian Integrity



Riparian Integrity by HUC14 Subwatershed

-  *Low*
-  *Moderate*
-  *High*
-  Preservation Area
-  Municipal Boundaries

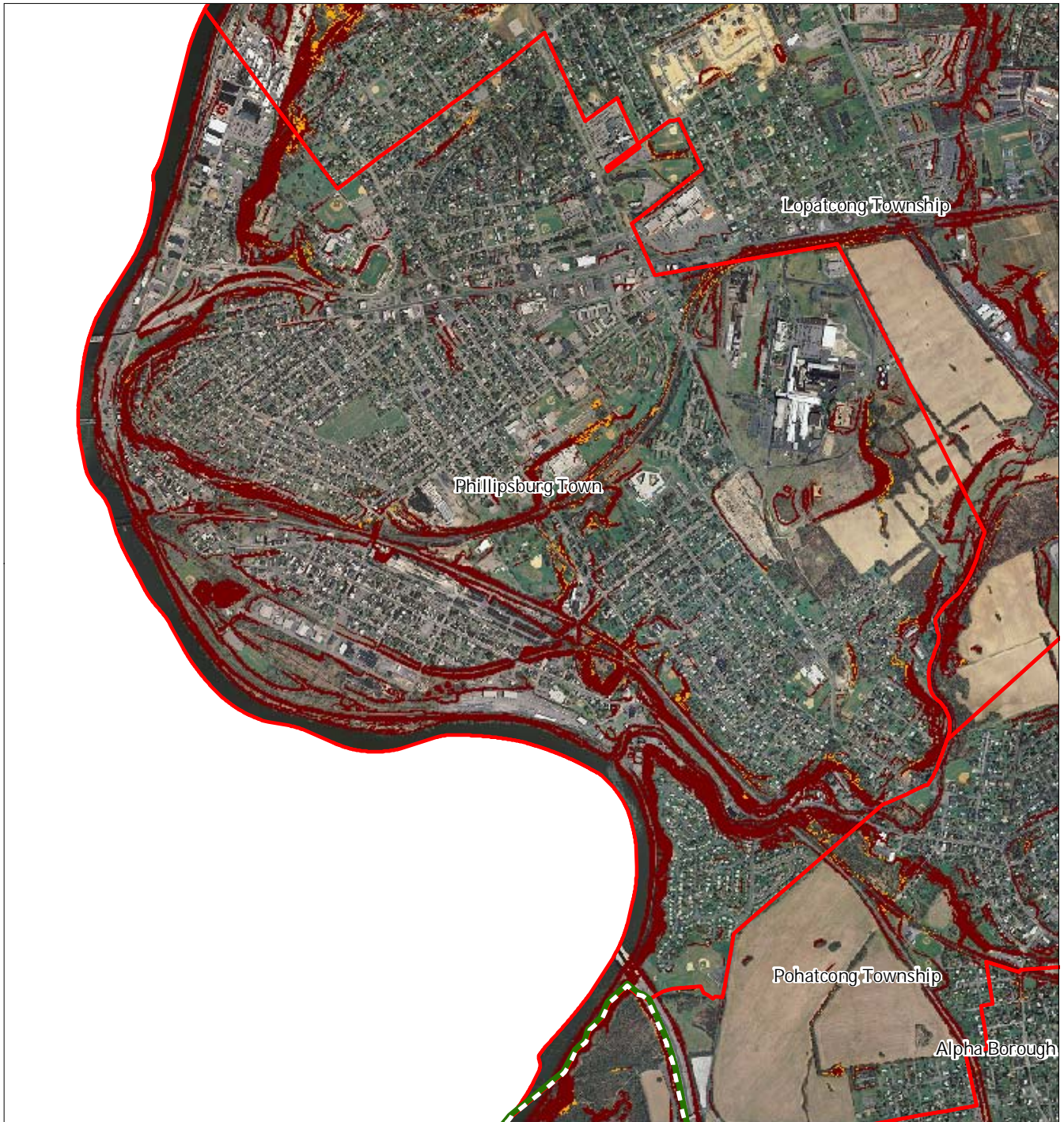
Phillipsburg Town







1 inch = 0.332 miles



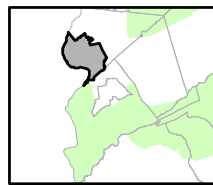
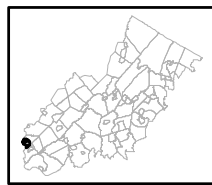
Figure 11: Steep Slope Protection Area



Steep Slope

-  Moderate
-  Severe
-  Preservation Area
-  Municipal Boundaries

Phillipsburg Town






1 inch = 0.332 miles

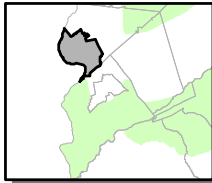


Figure 12: Critical Wildlife Habitat



-  Critical Wildlife Habitat
-  Preservation Area
-  Municipal Boundaries

Phillipsburg Town






1 inch = 0.332 miles

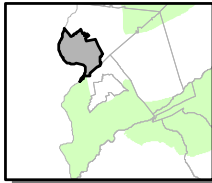


Figure 13: Significant Natural Areas



-  Significant Natural Areas
-  Preservation Area
-  Municipal Boundaries

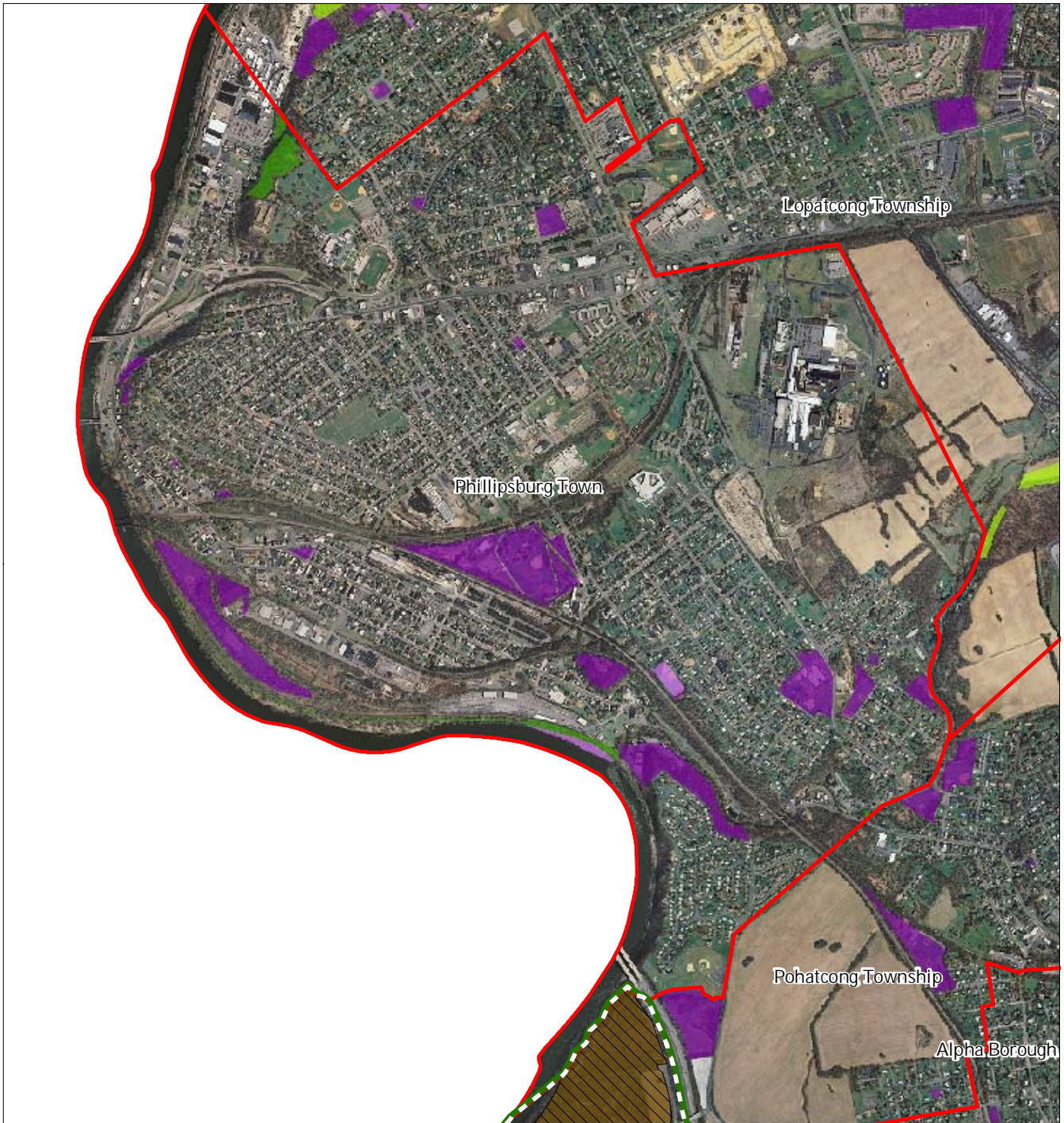
Phillipsburg Town



1 inch = 0.332 miles

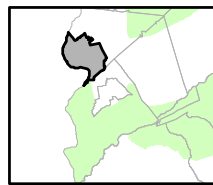
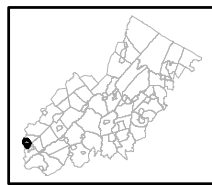


Figure 15: Preserved Lands



- | | |
|---|-------------------------------|
| Preserved Lands | Conservation Easements |
| Federal Open Space | Green Acres |
| State Open Space | SADC Easements |
| County Open Space | SADC Final |
| Municipal Open Space | SADC Preserved |
| Non-Profit/Private Open Space | Municipal Boundaries |
| Water Supply Watershed Lands | Preservation Area |
| Preserved Farmland | |
| Highlands Transfer of Development Lands | |

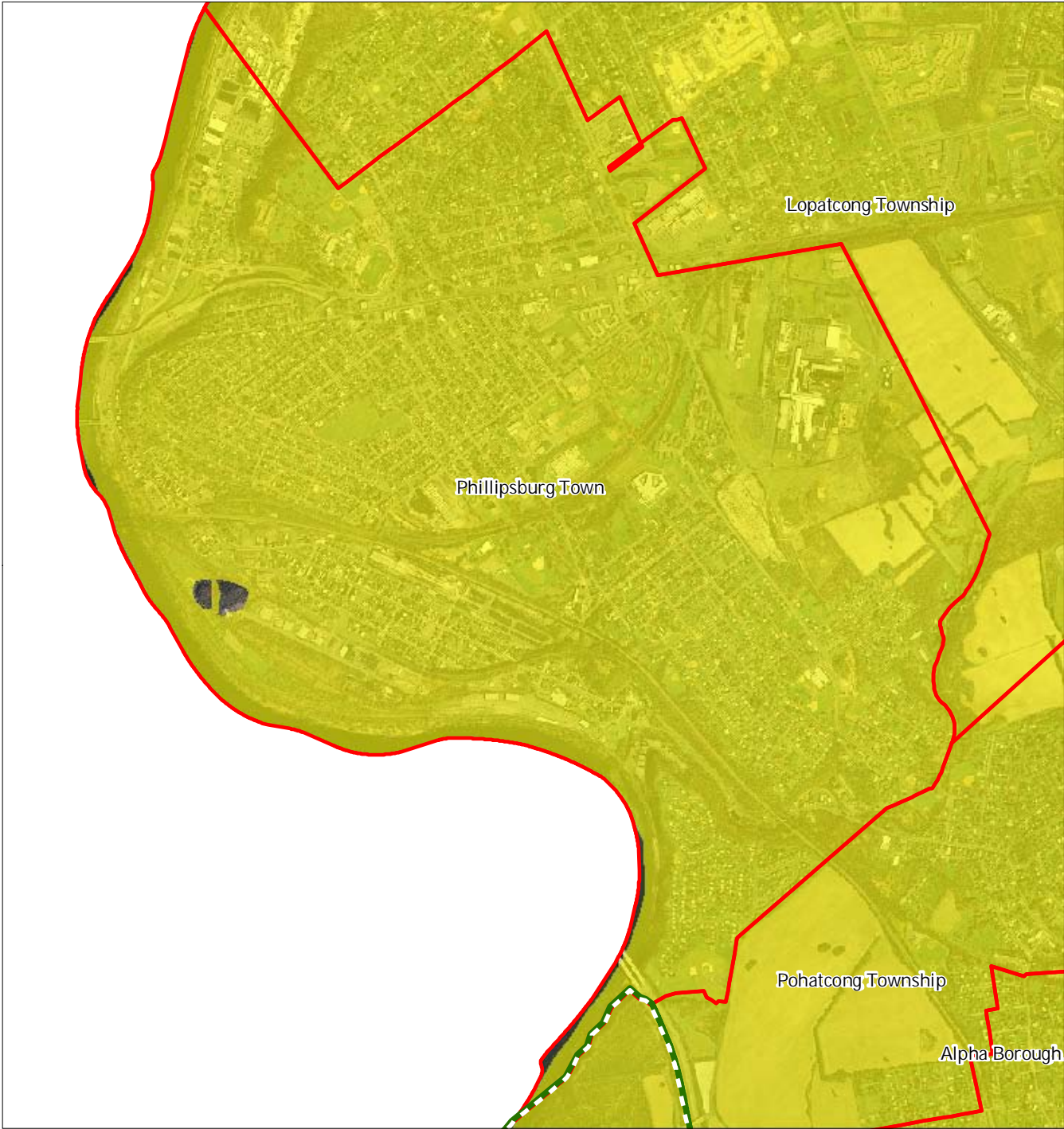
Phillipsburg Town






1 inch = 0.332 miles

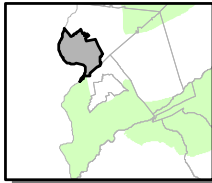


Figure 18: Carbonate Rock Area



-  Carbonate Rock Area
-  Preservation Area
-  Municipal Boundaries

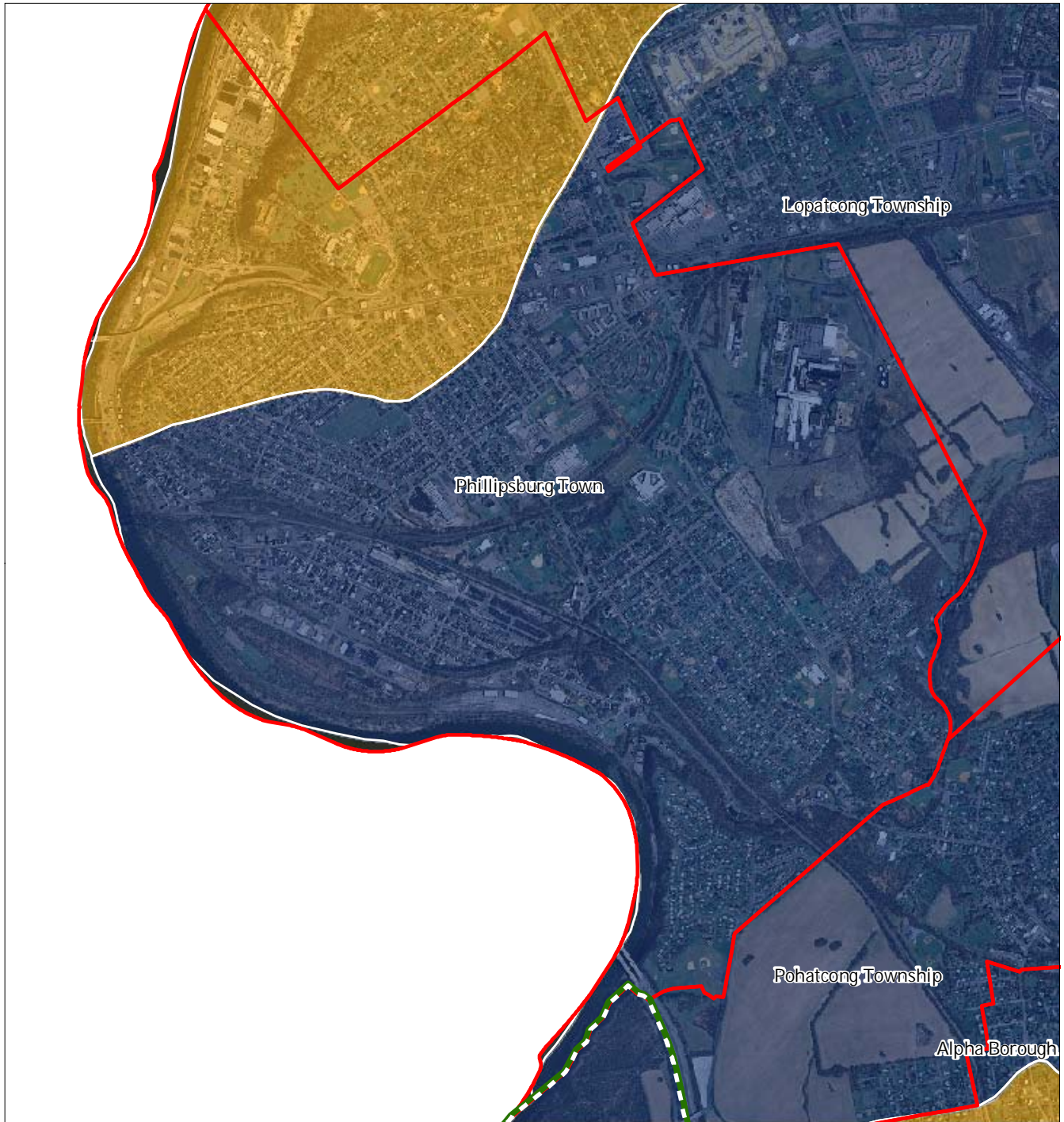
Phillipsburg Town



1 inch = 0.332 miles



Figure 20: Net Water Availability



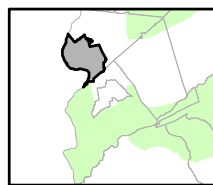
Net Water Availability By HUC14

Million Gallons Per Day (MGD)

- 0.10 - 0.39
- 0.05 - 0.09
- 0.00 - 0.04
- 0.09 - 0.00
- 0.99 - -0.10
- 7.10 - -1.00

- Preservation Area
- Municipal Boundaries

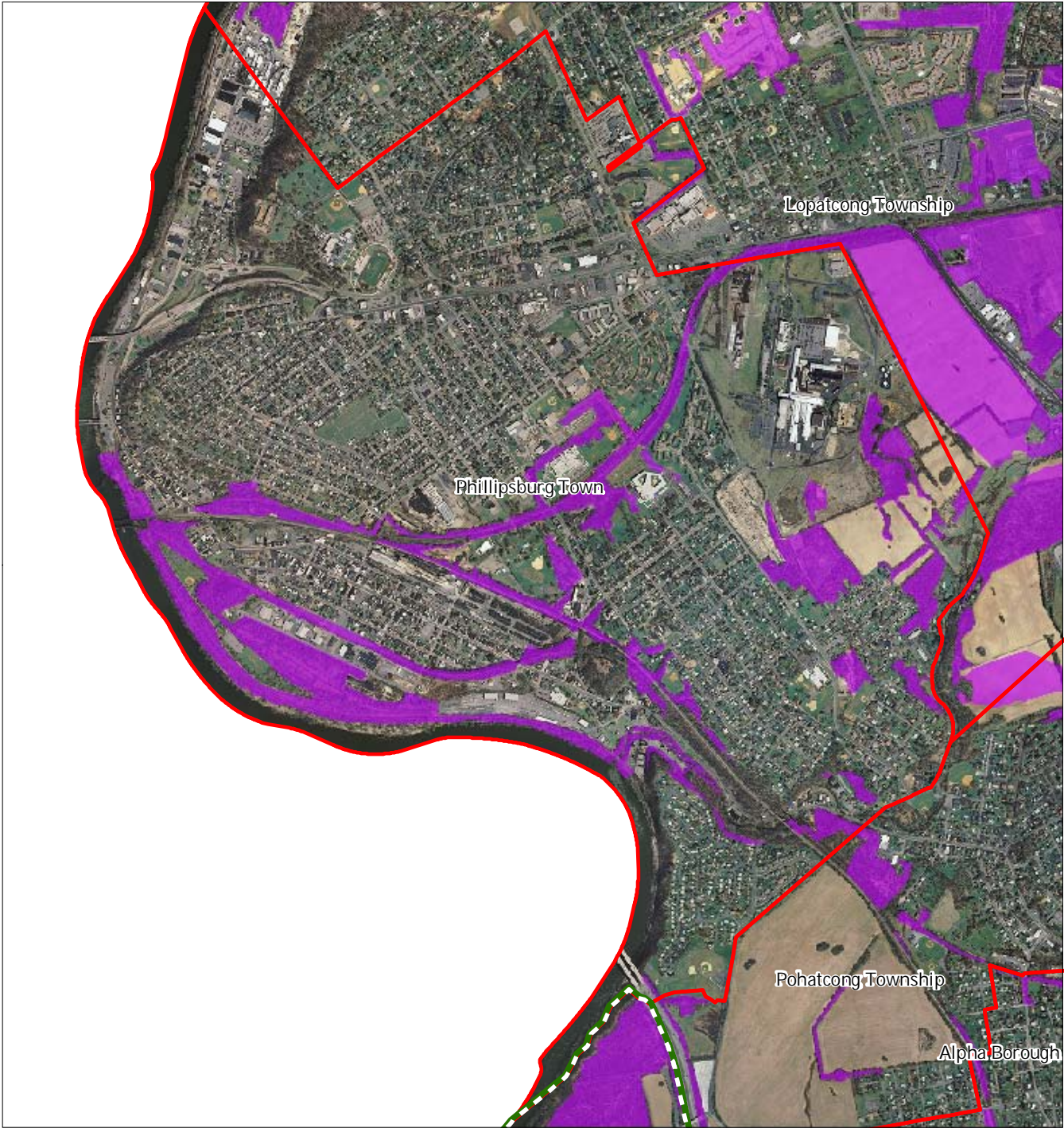
Phillipsburg Town






1 inch = 0.332 miles

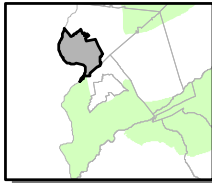


Figure 21: Prime Ground Water Recharge Areas



-  Prime Groundwater Recharge Areas
-  Preservation Area
-  Municipal Boundaries

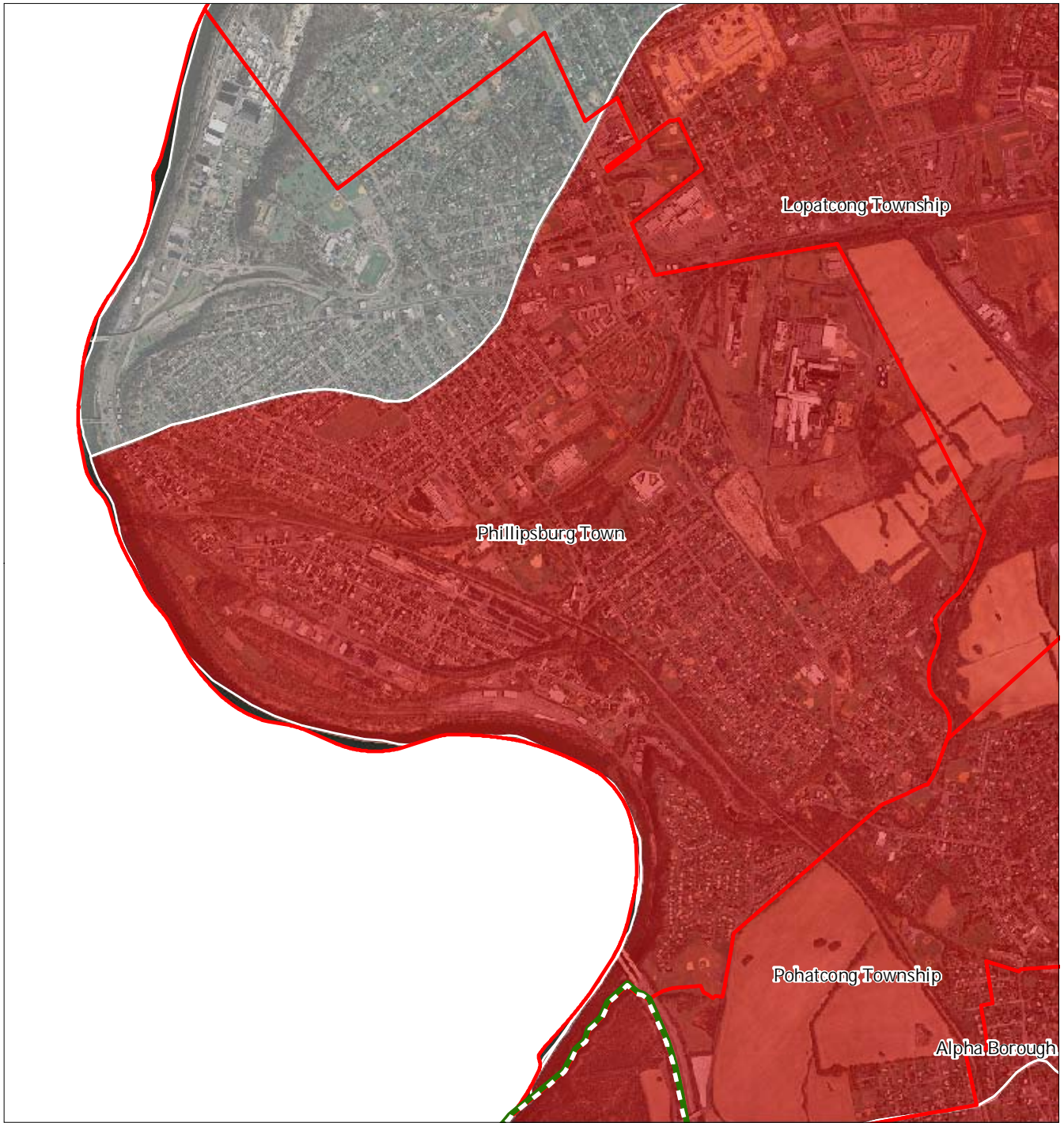
Phillipsburg Town



1 inch = 0.332 miles



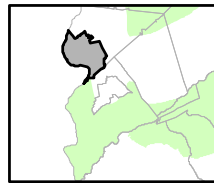
Figure 22: HUC 14s on NJDEP Impaired Waters List



Impaired Waters Overall Assessment by HUC14 Subwatershed

- Non Impacted*
- Insufficient Data Available*
- Moderate*
- Water Quality Impaired*
- Preservation Area
- Municipal Boundaries

Phillipsburg Town



1 inch = 0.332 miles



Figure 23: Wellhead Protection Areas



- Public Community Wells
- Public Non-Community Wells

Wellhead Protection Areas

- 2-Year Tier
- 5-Year Tier
- 12-Year Tier

- Preservation Area
- Municipal Boundaries

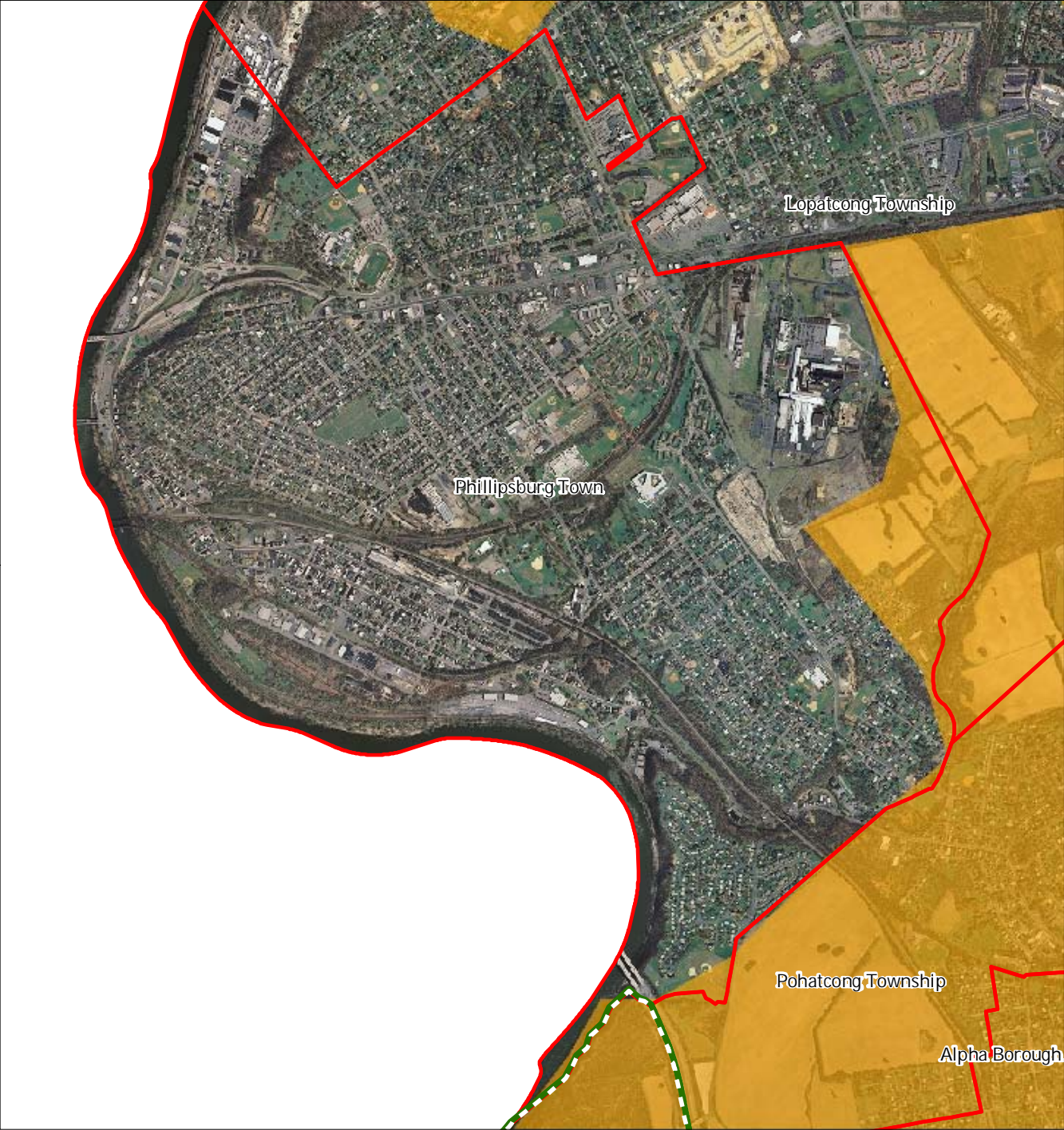
Phillipsburg Town






1 inch = 0.332 miles

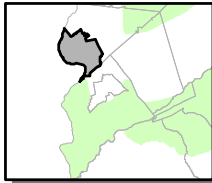


Figure 24: Agricultural Resource Area



-  Agricultural Resource Area
-  Preservation Area
-  Municipal Boundaries

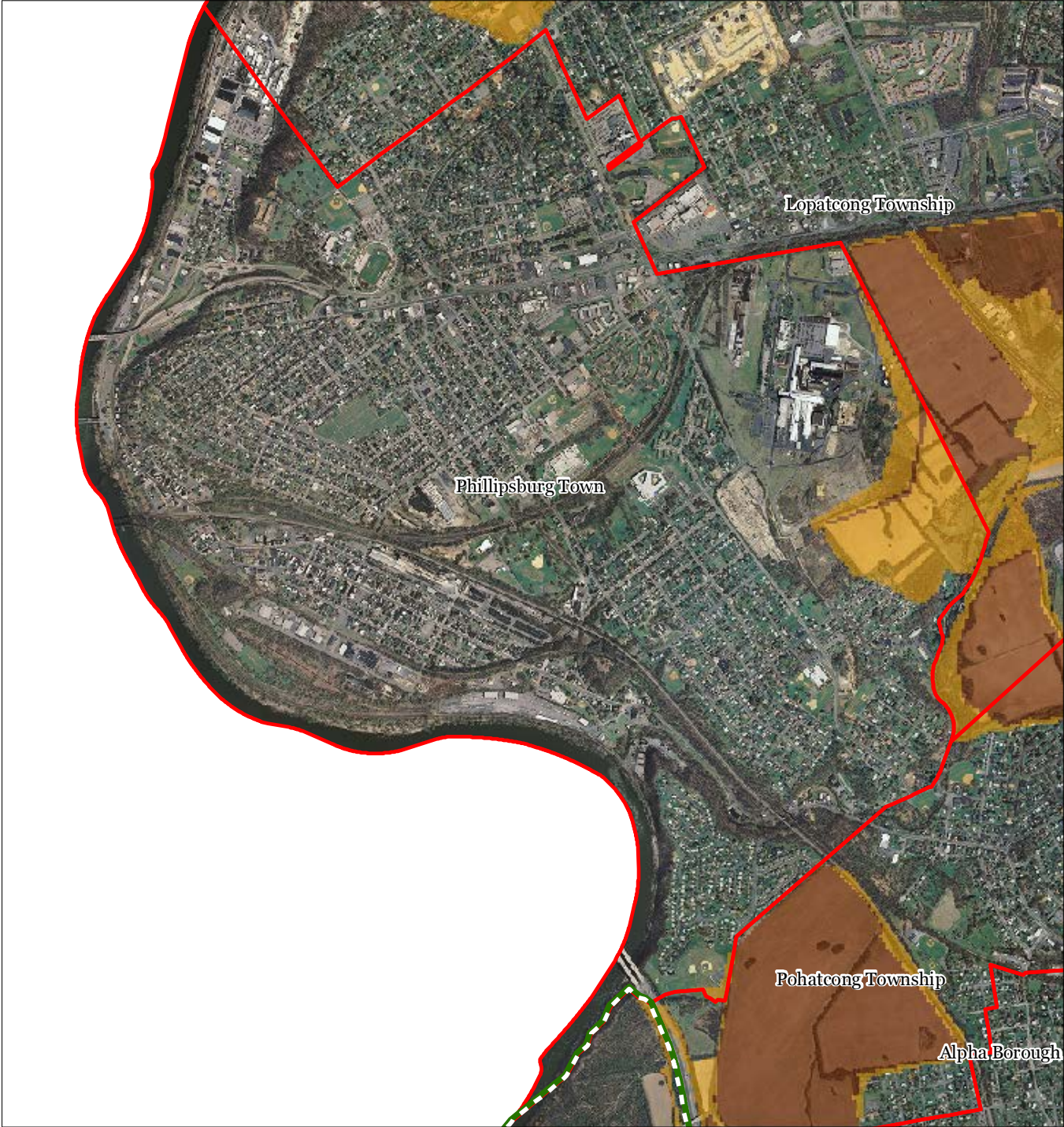
Phillipsburg Town







1 inch = 0.332 miles



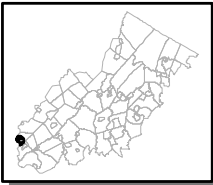
Figure 25: Agricultural Priority Area



Agricultural Priority Area

-  Moderate
-  High
-  Preservation Area
-  Municipal Boundaries

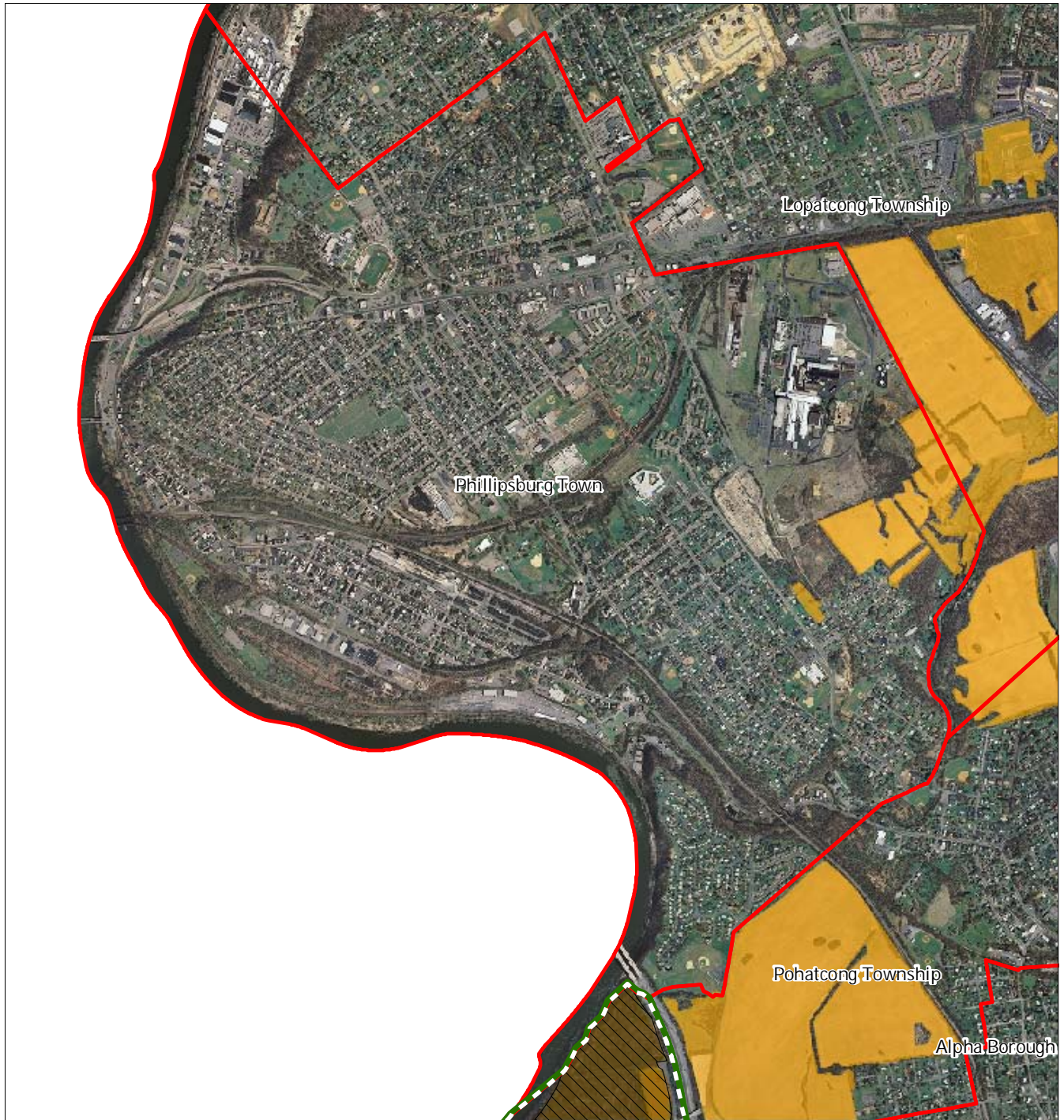
Phillipsburg Town



1 inch = 0.332 miles



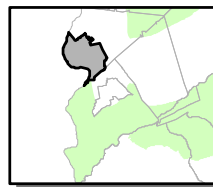
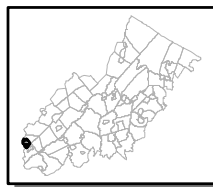
Figure 26: Preserved Farms, SADC Easements, All Agricultural Uses



SADC Easements

-  *SADC Final*
-  *SADC Preserved*
-  Preserved Farmland
-  Agriculture Uses
-  Preservation Area
-  Municipal Boundaries

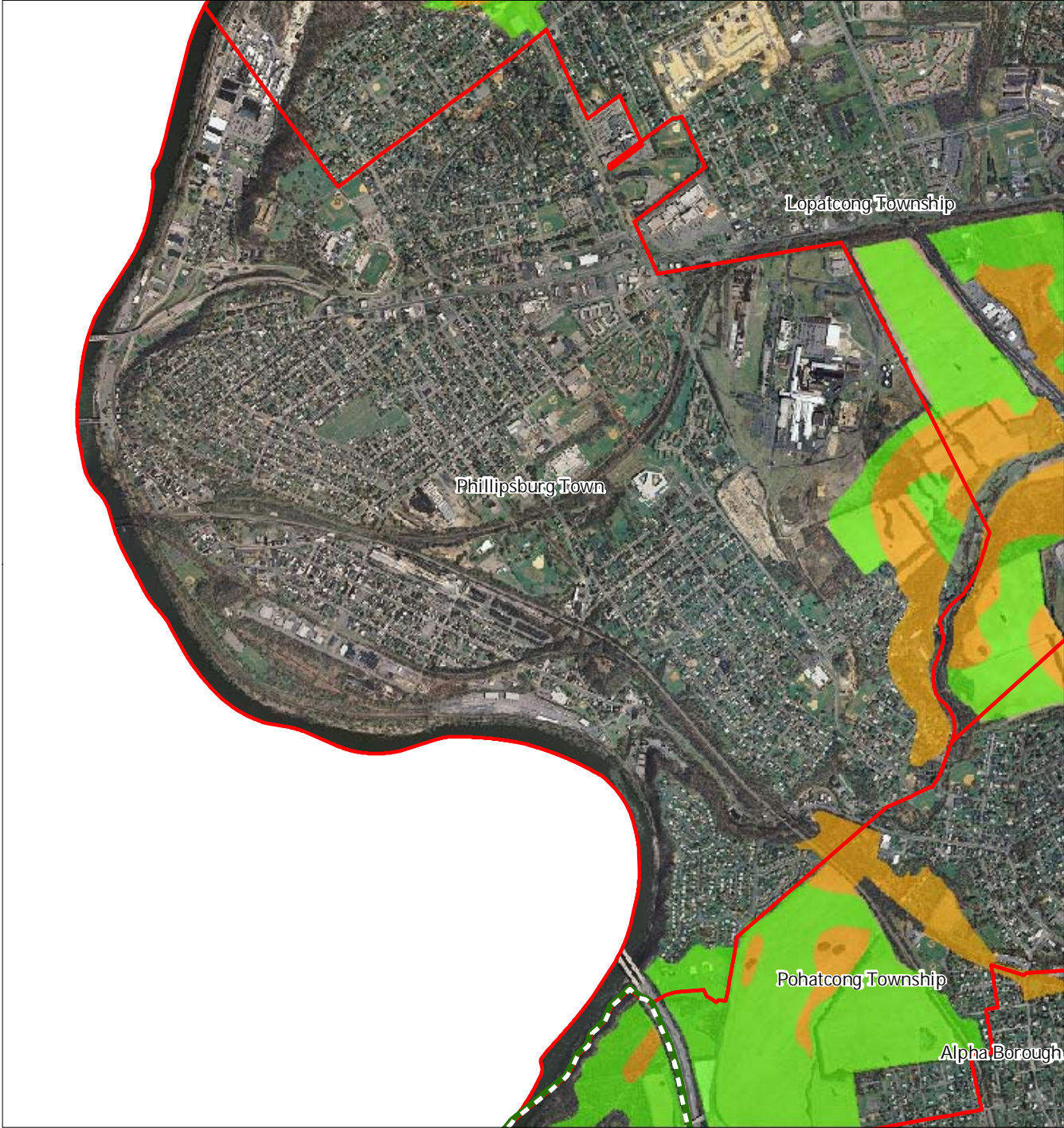
Phillipsburg Town



1 inch = 0.332 miles



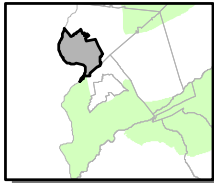
Figure 27: Important Farmland Soils



Important Farmland Soils

-  Prime Farmland
-  Farmland of Local Importance
-  Farmland of Statewide Importance
-  Farmland of Unique Importance
-  Preservation Area
-  Municipal Boundaries

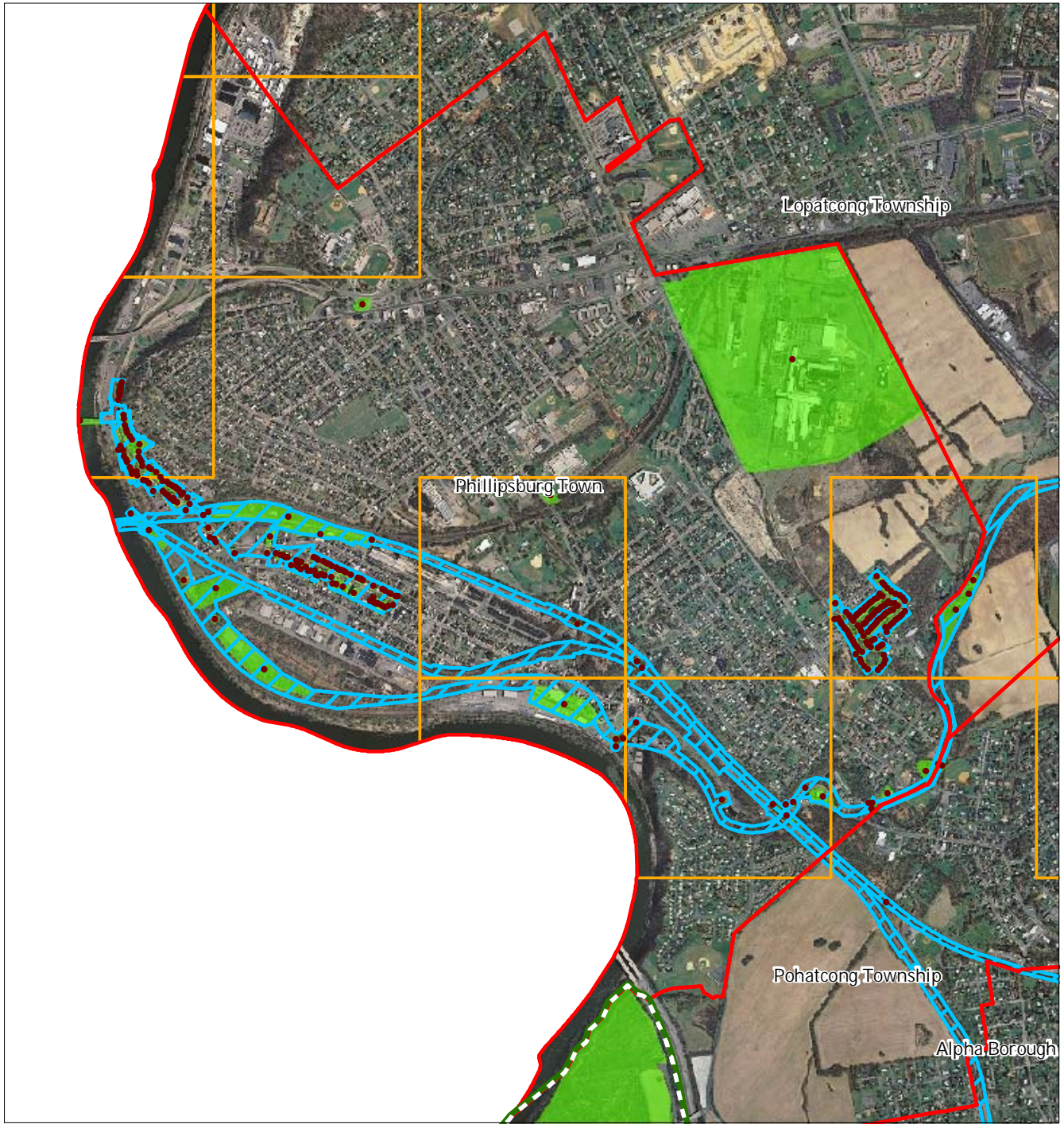
Phillipsburg Town



1 inch = 0.332 miles

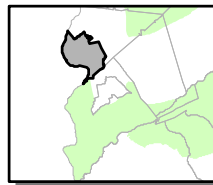
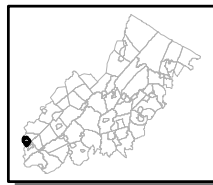


Figure 28: Historic, Cultural, and Archaeological Resources Inventory



-  Preservation Area
-  Municipal Boundaries
-  Archaeological Grids (1 sqmi)
-  NJ Historic Districts
-  Historic Property Points
-  Historic Property Polygons

Phillipsburg Town






1 inch = 0.332 miles

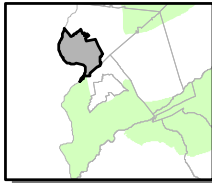


Figure 29: Baseline Scenic Resources Inventory



-  Scenic Resources
-  Municipal Boundaries
-  Preservation Area

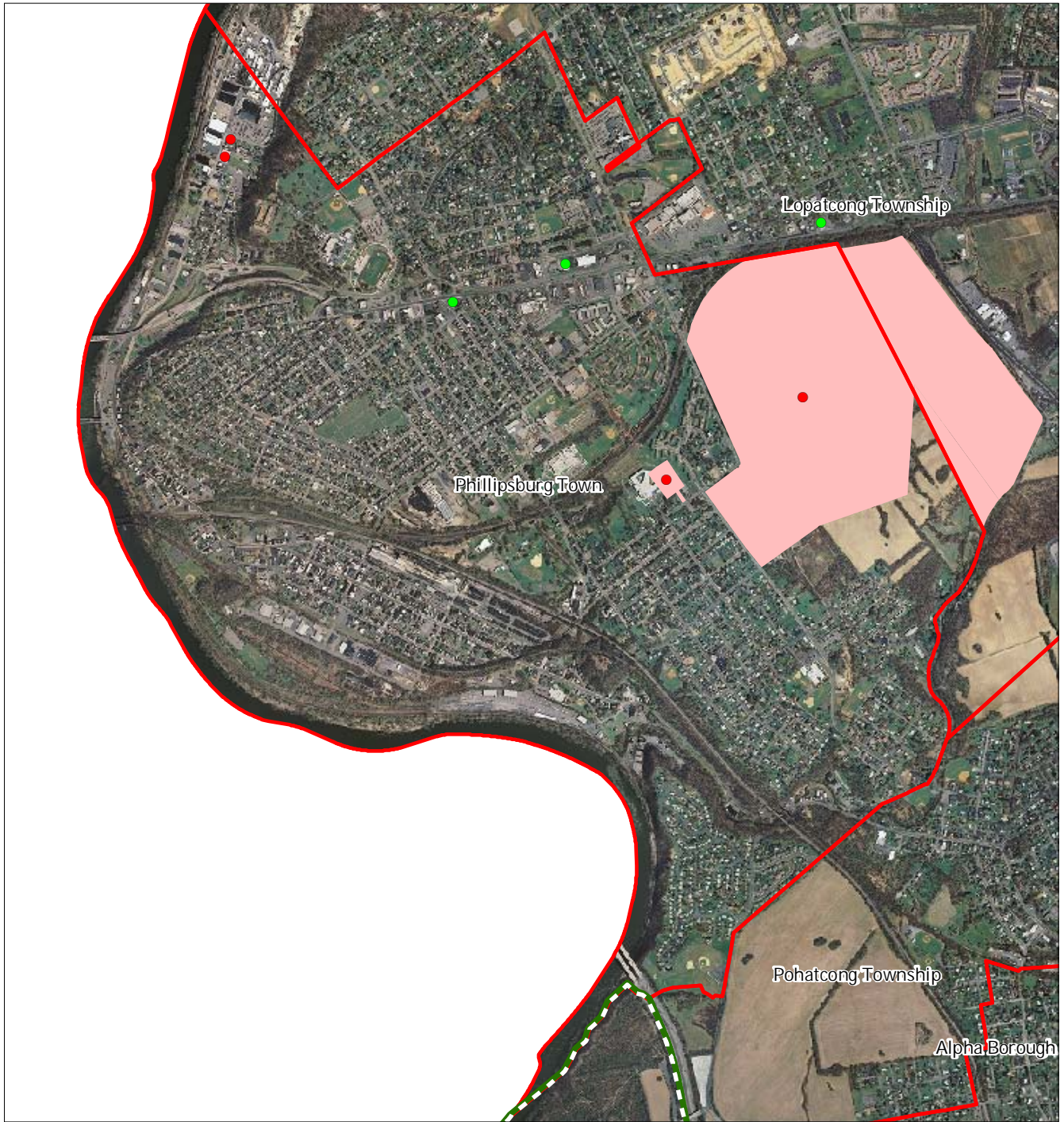
Phillipsburg Town



1 inch = 0.332 miles



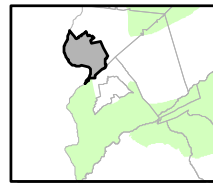
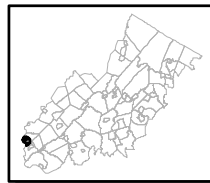
Figure 30: Highlands Contaminated Site Inventory



Highlands Contaminated Site Inventory

- Tier 1 Sites
- Tier 1 Sites (Polygons)
- Tier 2 Sites
- ▭ Preservation Area
- ▭ Municipal Boundaries

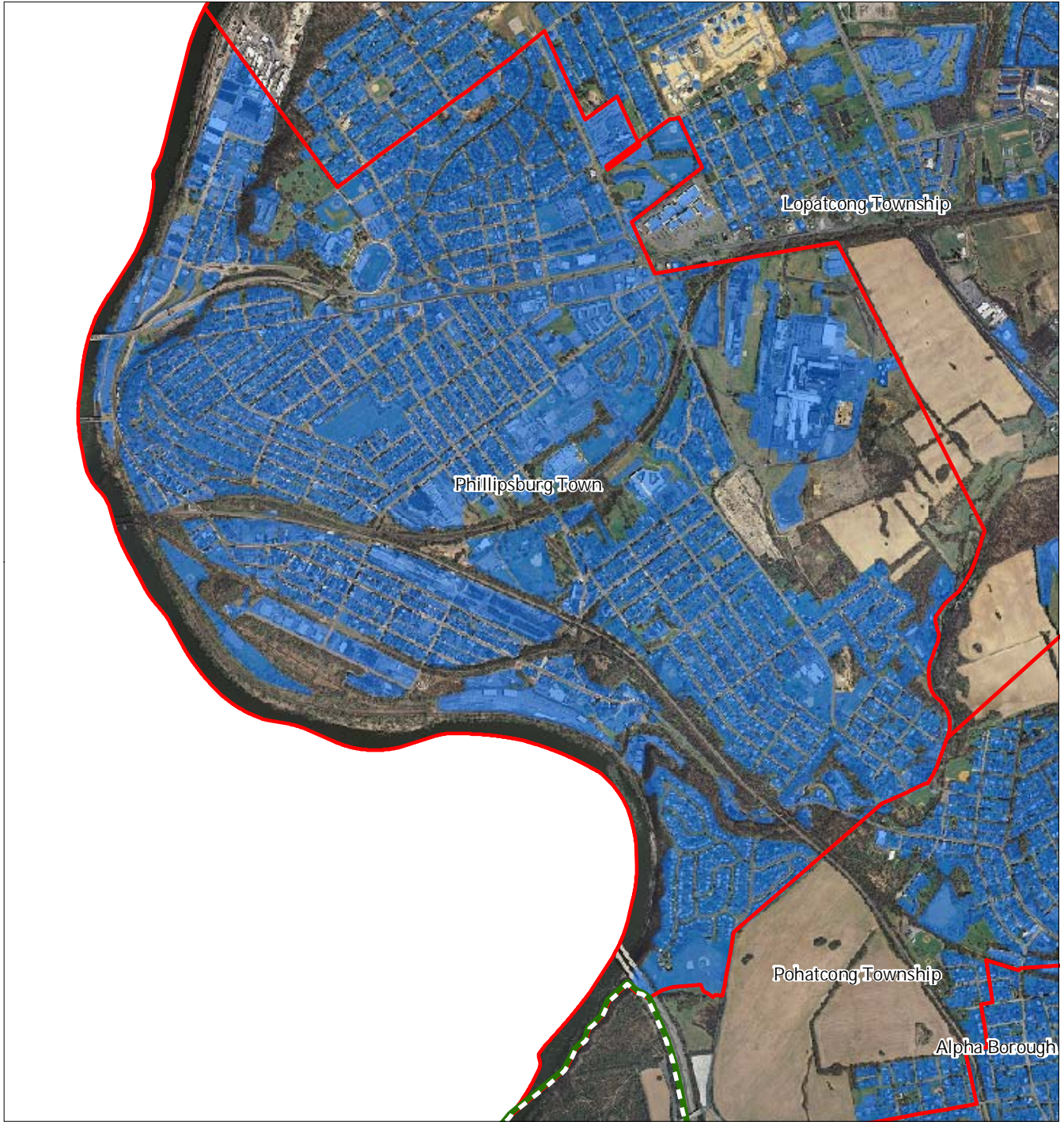
Phillipsburg Town






1 inch = 0.332 miles

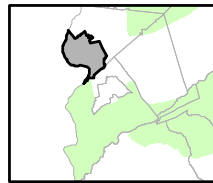


Figure 31: Public Community Water Systems



-  Public Community Water Systems
-  Preservation Area
-  Municipal Boundaries

Phillipsburg Town






1 inch = 0.332 miles



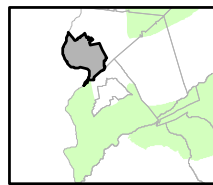
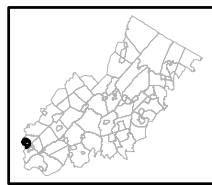
Figure 32: Highlands Domestic Sewerage Facilities



Highlands Domestic Sewerage Facilities

-  Existing Area Served
-  Preservation Area
-  Municipal Boundaries

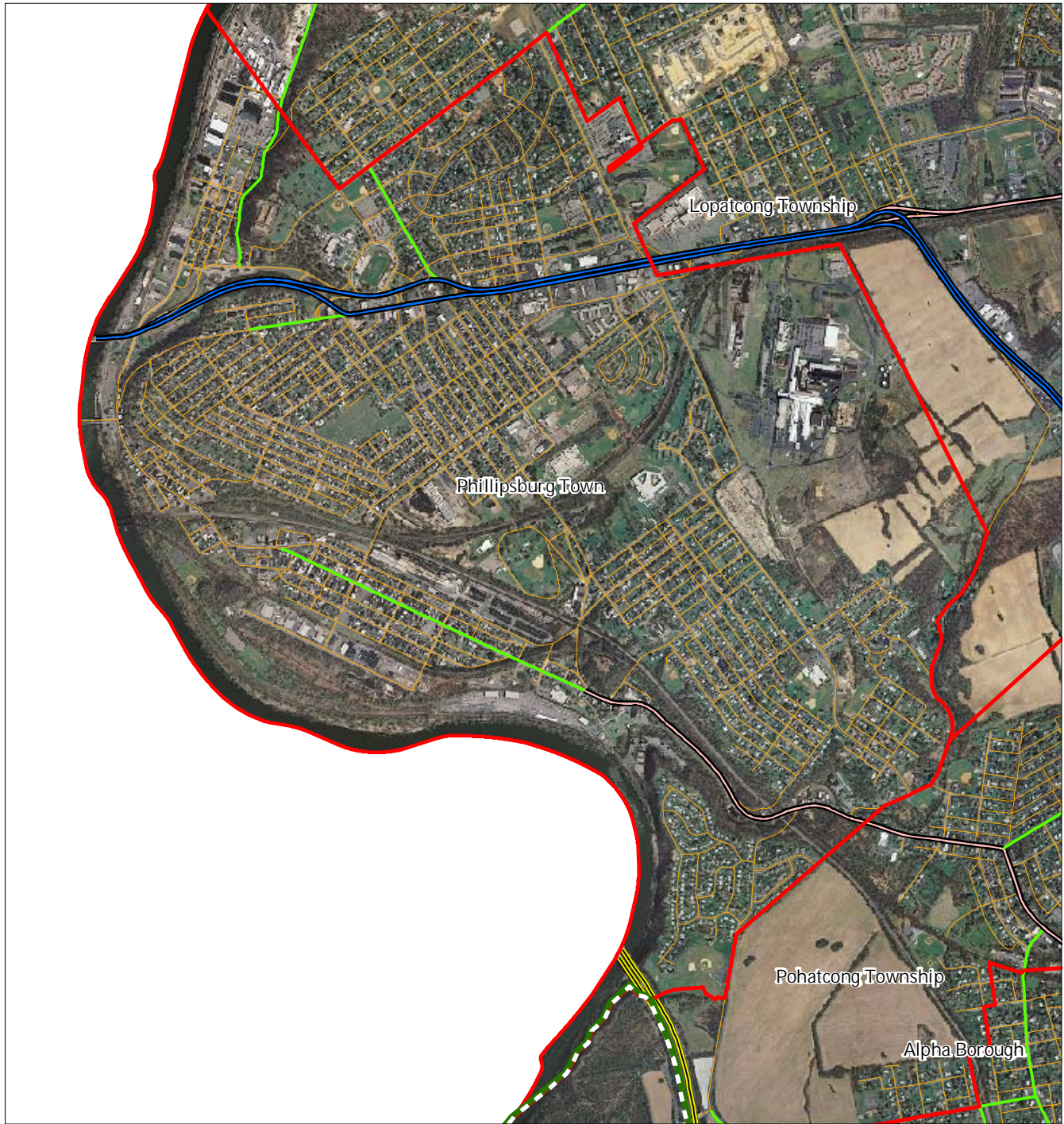
Phillipsburg Town



1 inch = 0.332 miles




Figure 33: Highlands Roadway Network



Roadway Network

 Interstate Highways

 U.S. Routes

 State Routes

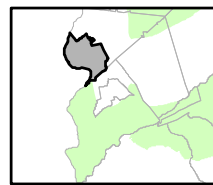
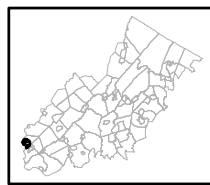
 County Routes

 Local Routes

 Preservation Area

 Municipal Boundaries

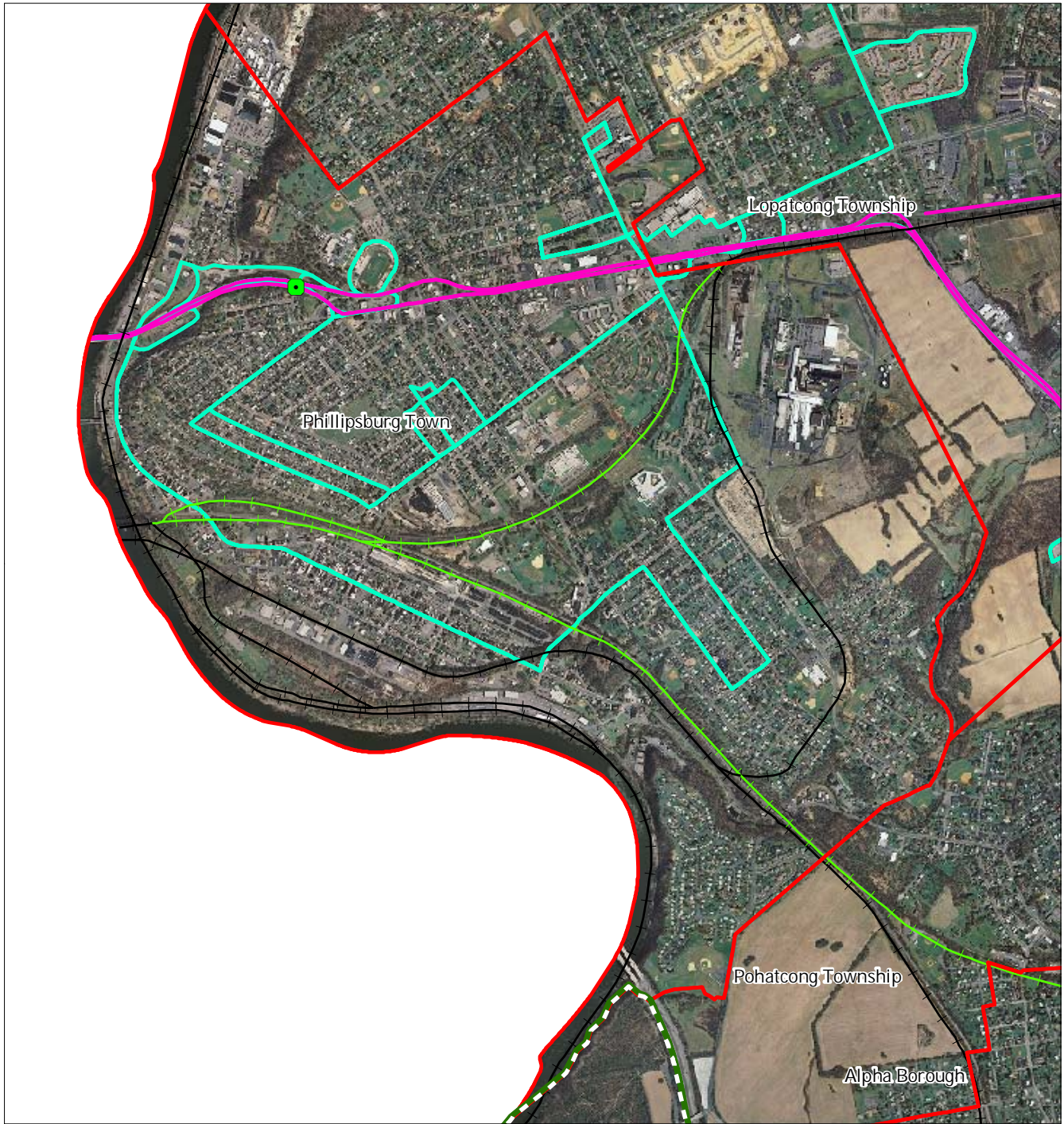
Phillipsburg Town



1 inch = 0.332 miles

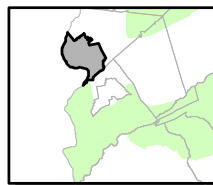
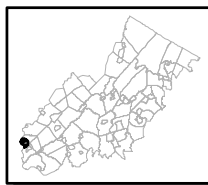


Figure 34: Highlands Transit Network



- | | |
|---|----------------------|
| Rail Network | Rail Stations |
| <i>Boonton Line</i> | Park and Ride Sites |
| <i>Main Line & Bergen County Line</i> | Private Bus Lines |
| <i>Morris and Essex Line</i> | NJ Transit Bus Lines |
| <i>Raritan Valley Line</i> | Airports |
| Freight Rail Lines | |
| <i>Freight Rail Lines</i> | |
| <i>Abandoned Freight Rail</i> | |

Phillipsburg Town



1 inch = 0.332 miles

