

LANDSLIDE SUSCEPTIBILITY FOR SOMERSET COUNTY, NEW JERSEY

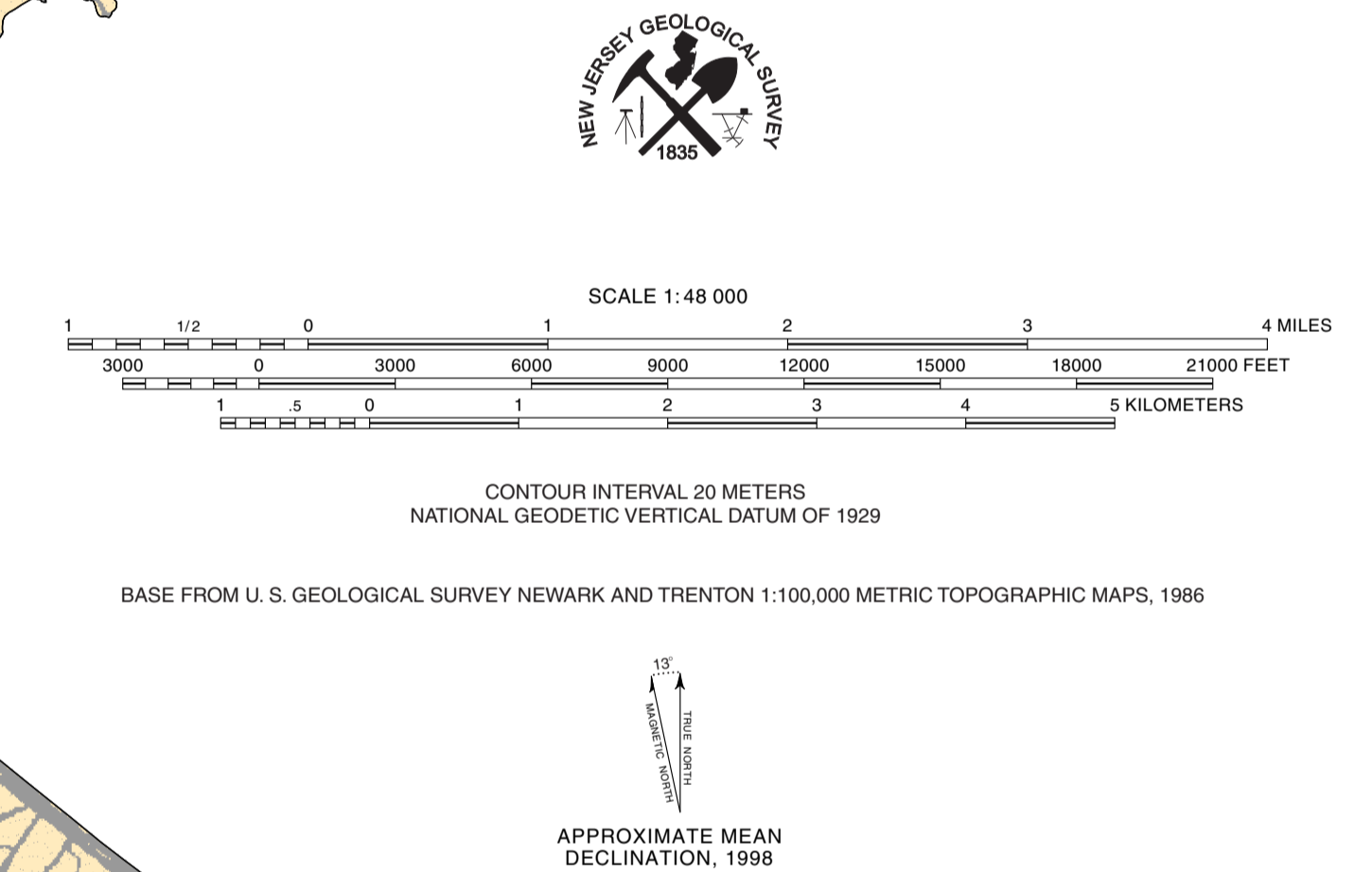
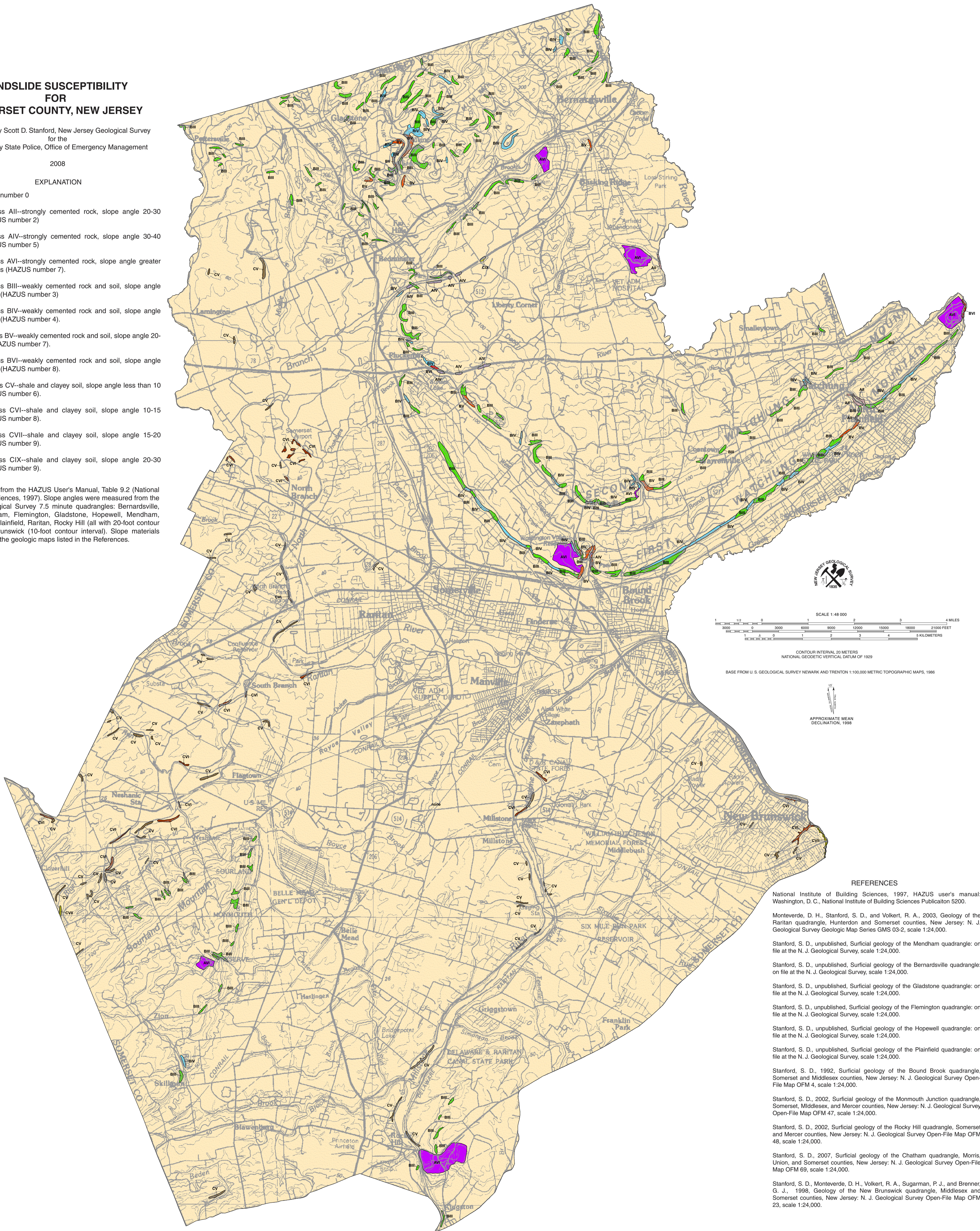
Prepared by Scott D. Stanford, New Jersey Geological Survey for the New Jersey State Police, Office of Emergency Management

2008

EXPLANATION

- None--HAZUS number 0
- Landslide Class AII--strongly cemented rock, slope angle 20-30 degrees (HAZUS number 2)
- Landslide Class AIV--strongly cemented rock, slope angle 30-40 degrees (HAZUS number 5)
- Landslide Class AVI--strongly cemented rock, slope angle greater than 40 degrees (HAZUS number 7)
- Landslide Class BIII--weakly cemented rock and soil, slope angle 10-15 degrees (HAZUS number 3)
- Landslide Class BIV--weakly cemented rock and soil, slope angle 15-20 degrees (HAZUS number 4)
- Landslide Class BV--weakly cemented rock and soil, slope angle 20-30 degrees (HAZUS number 7)
- Landslide Class BVI--weakly cemented rock and soil, slope angle 30-40 degrees (HAZUS number 8)
- Landslide Class CV--shale and clayey soil, slope angle less than 10 degrees (HAZUS number 6)
- Landslide Class CVI--shale and clayey soil, slope angle 10-15 degrees (HAZUS number 8)
- Landslide Class CVII--shale and clayey soil, slope angle 15-20 degrees (HAZUS number 9)
- Landslide Class CIX--shale and clayey soil, slope angle 20-30 degrees (HAZUS number 9)

Landslide classes are from the HAZUS User's Manual, Table 9.2 (National Institute of Building Sciences, 1997). Slope angles were measured from the following U. S. Geological Survey 7.5 minute quadrangles: Bernardsville, Bound Brook, Chatham, Flemington, Gladstone, Hopewell, Manham, Monmouth Junction, Plainfield, Raritan, Rocky Hill (all with 20-foot contour interval), and New Brunswick (10-foot contour interval). Slope materials were determined from the geologic maps listed in the References.



REFERENCES

National Institute of Building Sciences, 1997, HAZUS user's manual: Washington, D. C., National Institute of Building Sciences Publication 5200.

Monteverde, D. H., Stanford, S. D., and Volkert, R. A., 2003, Geology of the Raritan quadrangle, Hunterdon and Somerset counties, New Jersey: N. J. Geological Survey Geologic Map Series GMS 03-2, scale 1:24,000.

Stanford, S. D., unpublished, Surficial geology of the Mendham quadrangle: on file at the N. J. Geological Survey, scale 1:24,000.

Stanford, S. D., unpublished, Surficial geology of the Bernardsville quadrangle: on file at the N. J. Geological Survey, scale 1:24,000.

Stanford, S. D., unpublished, Surficial geology of the Gladstone quadrangle: on file at the N. J. Geological Survey, scale 1:24,000.

Stanford, S. D., unpublished, Surficial geology of the Flemington quadrangle: on file at the N. J. Geological Survey, scale 1:24,000.

Stanford, S. D., unpublished, Surficial geology of the Hopewell quadrangle: on file at the N. J. Geological Survey, scale 1:24,000.

Stanford, S. D., unpublished, Surficial geology of the Plainfield quadrangle: on file at the N. J. Geological Survey, scale 1:24,000.

Stanford, S. D., 1992, Surficial geology of the Bound Brook quadrangle, Somerset and Middlesex counties, New Jersey: N. J. Geological Survey Open-File Map OFM 4, scale 1:24,000.

Stanford, S. D., 2002, Surficial geology of the Monmouth Junction quadrangle, Somerset, Middlesex, and Mercer counties, New Jersey: N. J. Geological Survey Open-File Map OFM 47, scale 1:24,000.

Stanford, S. D., 2002, Surficial geology of the Rocky Hill quadrangle, Somerset and Mercer counties, New Jersey: N. J. Geological Survey Open-File Map OFM 48, scale 1:24,000.

Stanford, S. D., 2007, Surficial geology of the Chatham quadrangle, Morris, Union, and Somerset counties, New Jersey: N. J. Geological Survey Open-File Map OFM 69, scale 1:24,000.

Stanford, S. D., Monteverde, D. H., Volkert, R. A., Sugarman, P. J., and Brenner, G. J., 1998, Geology of the New Brunswick quadrangle, Middlesex and Somerset counties, New Jersey: N. J. Geological Survey Open-File Map OFM 23, scale 1:24,000.