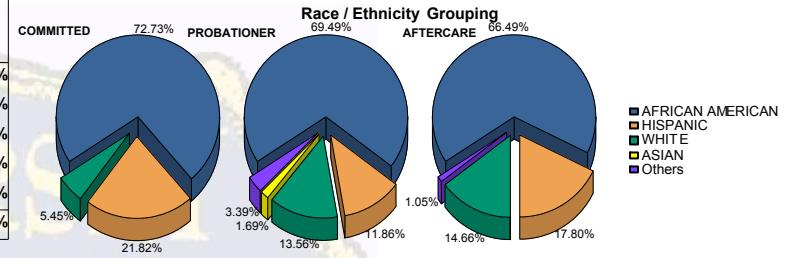


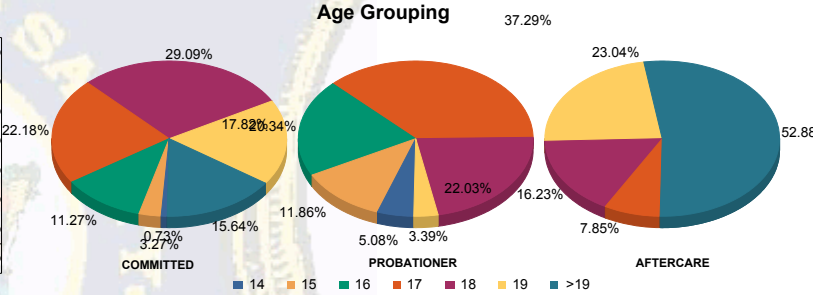


Juvenile Demographics and Statistics

Race/Ethnicity	COMMITTED		PROBATIONER		AFTERCARE		Total							
	MALE	FEMALE	MALE	FEMALE	MALE	FEMALE								
AFRICAN AMERICAN	196	73.96%	4	40.00%	39	69.64%	2	66.67%	117	65.73%	10	76.92%	368	70.10%
HISPANIC	57	21.51%	3	30.00%	6	10.71%	1	33.33%	32	17.98%	2	15.38%	101	19.24%
WHITE	12	4.53%	3	30.00%	8	14.29%	0	0.00%	27	15.17%	1	7.69%	51	9.71%
ASIAN	0	0.00%	0	0.00%	1	1.79%	0	0.00%	0	0.00%	0	0.00%	1	0.19%
Others	0	0.00%	0	0.00%	2	3.57%	0	0.00%	2	1.12%	0	0.00%	4	0.76%
Total	265	100.00%	10	100.00%	56	100.00%	3	100.00%	178	100.00%	13	100.00%	525	100.00%



Age	MALE	FEMALE	MALE	FEMALE	MALE	FEMALE	MALE	FEMALE	Total	
14	2	0.75%	0	0.00%	3	5.36%	0	0.00%	5	0.95%
15	9	3.40%	0	0.00%	7	12.50%	0	0.00%	16	3.05%
16	30	11.32%	1	10.00%	11	19.64%	1	33.33%	43	8.19%
17	57	21.51%	4	40.00%	20	35.71%	2	66.67%	98	18.67%
18	78	29.43%	2	20.00%	13	23.21%	0	0.00%	124	23.62%
19	48	18.11%	1	10.00%	2	3.57%	0	0.00%	95	18.10%
>19	41	15.47%	2	20.00%	0	0.00%	0	0.00%	144	27.43%
Total	265	100.00%	10	100.00%	56	100.00%	3	100.00%	178	100.00%

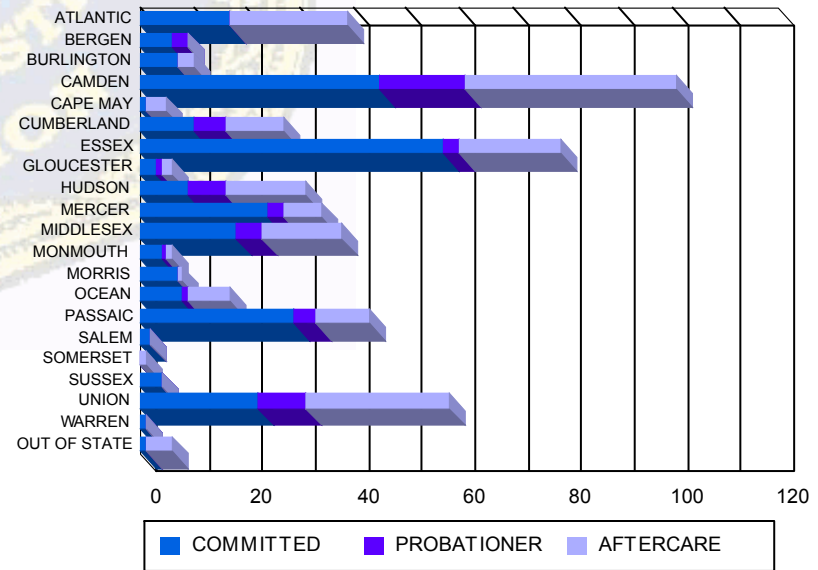


Average Age	COMMITTED	PROBATIONER	AFTERCARE	Total
Average Age	18.07	18.00	16.70	18.70

Sentencing County

County	MALE	FEMALE	MALE	FEMALE	MALE	FEMALE	MALE	FEMALE	Total	
ATLANTIC	17	6.42%	0	0.00%	0	0.00%	20	11.24%	39	7.43%
BERGEN	6	2.26%	0	0.00%	3	5.36%	0	0.00%	9	1.71%
BURLINGTON	7	2.64%	0	0.00%	0	0.00%	3	1.69%	10	1.90%
CAMDEN	44	16.60%	1	10.00%	14	25.00%	2	66.67%	101	19.24%
CAPE MAY	0	0.00%	1	10.00%	0	0.00%	4	2.25%	5	0.95%
CUMBERLAND	10	3.77%	0	0.00%	6	10.71%	0	0.00%	27	5.14%
ESSEX	55	20.75%	2	20.00%	3	5.36%	0	0.00%	79	15.05%
GLOUCESTER	2	0.75%	1	10.00%	1	1.79%	0	0.00%	6	1.14%
HUDSON	9	3.40%	0	0.00%	7	12.50%	0	0.00%	31	5.90%
MERCER	23	8.68%	1	10.00%	3	5.36%	0	0.00%	34	6.48%
MIDDLESEX	17	6.42%	1	10.00%	5	8.93%	0	0.00%	38	7.24%
MONMOUTH	4	1.51%	0	0.00%	1	1.79%	0	0.00%	6	1.14%
MORRIS	6	2.26%	1	10.00%	0	0.00%	0	0.00%	8	1.52%
OCEAN	8	3.02%	0	0.00%	0	0.00%	1	33.33%	17	3.24%
PASSAIC	28	10.57%	1	10.00%	4	7.14%	0	0.00%	43	8.19%
SALEM	2	0.75%	0	0.00%	0	0.00%	0	0.00%	2	0.38%
SOMERSET	0	0.00%	0	0.00%	0	0.00%	0	0.00%	1	0.19%
SUSSEX	3	1.13%	1	10.00%	0	0.00%	0	0.00%	4	0.76%
UNION	22	8.30%	0	0.00%	9	16.07%	0	0.00%	58	11.05%
WARREN	1	0.38%	0	0.00%	0	0.00%	0	0.00%	1	0.19%
OUT OF STATE	1	0.38%	0	0.00%	0	0.00%	0	0.00%	6	1.14%
Total	265	100.00%	10	100.00%	56	100.00%	3	100.00%	525	100.00%

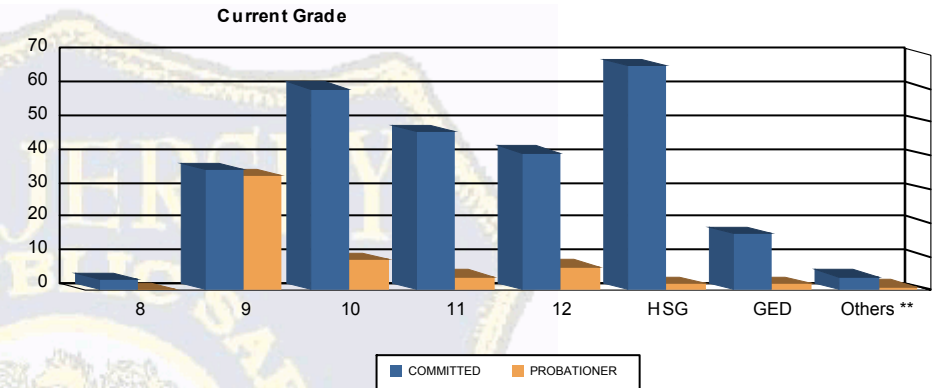
Count of Juveniles By Sentencing County





Juvenile Demographics and Statistics

Current Grade	COMMITTED		PROBATIONER		Total	
	MALE	FEMALE	MALE	FEMALE		
8	3 (1.13%)	0 (0.00%)	0 (0.00%)	0 (0.00%)	3 (0.90%)	
9	35 (13.21%)	1 (10.00%)	33 (58.93%)	1 (33.33%)	70 (20.96%)	
10	58 (21.89%)	2 (20.00%)	7 (12.50%)	2 (66.67%)	69 (20.66%)	
11	44 (16.60%)	3 (30.00%)	4 (7.14%)	0 (0.00%)	51 (15.27%)	
12	39 (14.72%)	2 (20.00%)	7 (12.50%)	0 (0.00%)	48 (14.37%)	
HSG	66 (24.91%)	1 (10.00%)	2 (3.57%)	0 (0.00%)	69 (20.66%)	
GED	16 (6.04%)	1 (10.00%)	2 (3.57%)	0 (0.00%)	19 (5.69%)	
Others **	4 (1.51%)	0 (0.00%)	1 (1.79%)	0 (0.00%)	5 (1.50%)	
Total	265 (100.00%)	10 (100.00%)	56 (100.00%)	3 (100.00%)	334 (100.00%)	

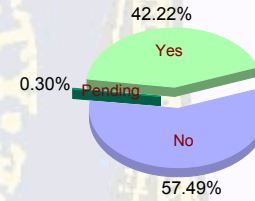


** Includes Aged Out Juveniles and Pending Records

Special Education Services

Yes	112 (42.26%)	5 (50.00%)	22 (39.29%)	2 (66.67%)	141 (42.22%)
No	153 (57.74%)	5 (50.00%)	33 (58.93%)	1 (33.33%)	192 (57.49%)
Pending	0 (0.00%)	0 (0.00%)	1 (1.79%)	0 (0.00%)	1 (0.30%)
Total	265 (100.00%)	10 (100.00%)	56 (100.00%)	3 (100.00%)	334 (100.00%)

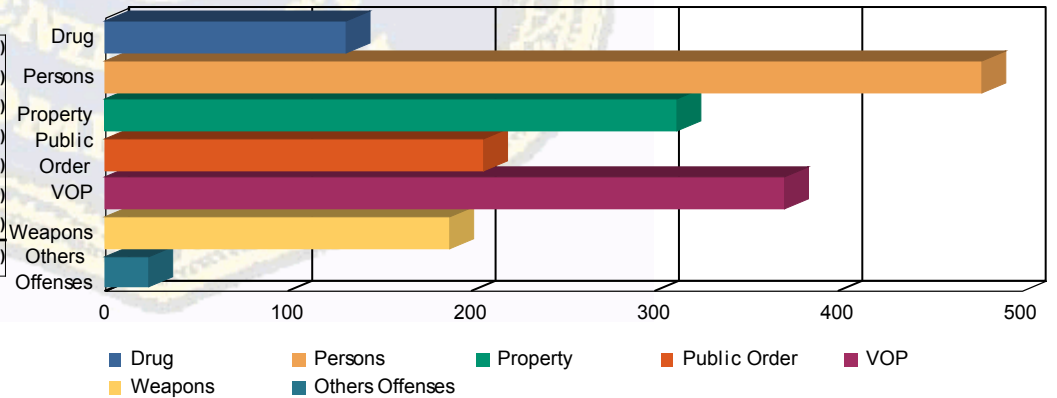
Special Education



Offense Categories

Drug	118 (7.77%)	3 (5.00%)	10 (8.00%)	0 (0.00%)	131 (7.67%)
Persons	433 (28.51%)	15 (25.00%)	29 (23.20%)	1 (25.00%)	478 (27.99%)
Property	285 (18.76%)	11 (18.33%)	16 (12.80%)	0 (0.00%)	312 (18.27%)
Public Order	184 (12.11%)	10 (16.67%)	12 (9.60%)	0 (0.00%)	206 (12.06%)
VOP	309 (20.34%)	13 (21.67%)	45 (36.00%)	3 (75.00%)	370 (21.66%)
Weapons	170 (11.19%)	7 (11.67%)	11 (8.80%)	0 (0.00%)	188 (11.01%)
Others Offenses	20 (1.32%)	1 (1.67%)	2 (1.60%)	0 (0.00%)	23 (1.35%)
Total *	1,519 (100.00%)	60 (100.00%)	125 (100.00%)	4 (100.00%)	1,708 (100.00%)

Offense Categories



* Juveniles may have multiple offenses