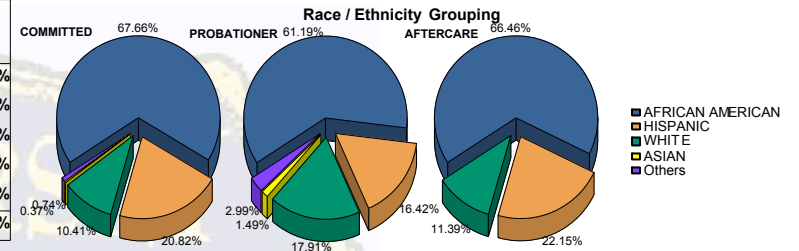


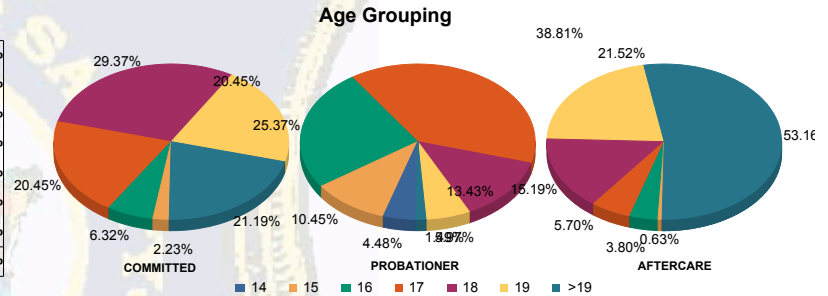


Juvenile Demographics and Statistics

Race/Ethnicity	COMMITTED		PROBATIONER		AFTERCARE		Total							
	MALE	FEMALE	MALE	FEMALE	MALE	FEMALE								
AFRICAN AMERICAN	175	68.90%	7	46.67%	39	65.00%	2	28.57%	101	67.33%	4	50.00%	328	66.40%
HISPANIC	54	21.26%	2	13.33%	10	16.67%	1	14.29%	33	22.00%	2	25.00%	102	20.65%
WHITE	22	8.66%	6	40.00%	8	13.33%	4	57.14%	16	10.67%	2	25.00%	58	11.74%
ASIAN	1	0.39%	0	0.00%	1	1.67%	0	0.00%	0	0.00%	0	0.00%	2	0.40%
Others	2	0.79%	0	0.00%	2	3.33%	0	0.00%	0	0.00%	0	0.00%	4	0.81%
Total	254	100.00%	15	100.00%	60	100.00%	7	100.00%	150	100.00%	8	100.00%	494	100.00%



Age	COMMITTED	PROBATIONER	AFTERCARE	Total
14	0	0	2	3
15	5	1	7	14
16	17	0	0	17
17	51	4	24	79
18	75	4	7	86
19	51	4	3	58
>19	55	2	0	57
Total	254	15	60	494

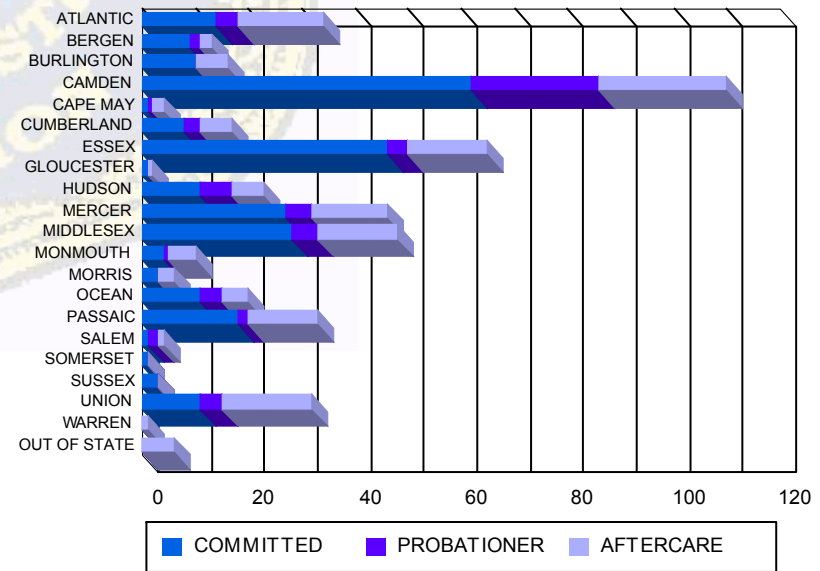


Average Age	COMMITTED	PROBATIONER	AFTERCARE	Total
Average Age	18.43	18.20	16.60	17.57
				20.19
				20.88
				18.76

Sentencing County

Sentencing County	COMMITTED	PROBATIONER	AFTERCARE	Total
ATLANTIC	14	5.51%	0	14
BERGEN	9	3.54%	0	9
BURLINGTON	8	3.15%	2	10
CAMDEN	56	22.05%	6	62
CAPE MAY	1	0.39%	0	1
CUMBERLAND	8	3.15%	0	8
ESSEX	44	17.32%	2	46
GLOUCESTER	1	0.39%	0	1
HUDSON	11	4.33%	0	11
MERCER	25	9.84%	2	27
MIDDLESEX	27	10.63%	1	28
MONMOUTH	4	1.57%	0	4
MORRIS	3	1.18%	0	3
OCEAN	11	4.33%	0	11
PASSAIC	18	7.09%	0	18
SALEM	1	0.39%	0	1
SOMERSET	1	0.39%	0	1
SUSSEX	2	0.79%	1	3
UNION	10	3.94%	1	11
WARREN	0	0.00%	0	0
OUT OF STATE	0	0.00%	0	0
Total	254	100.00%	15	494

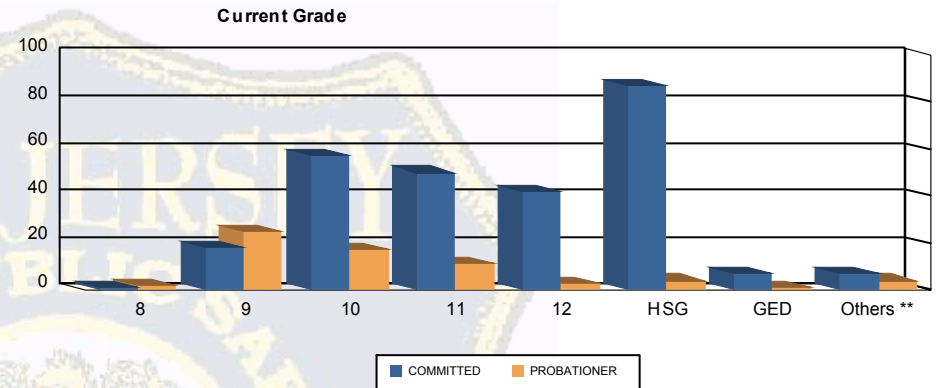
Count of Juveniles By Sentencing County





Juvenile Demographics and Statistics

Current Grade	COMMITTED		PROBATIONER		Total	
	MALE	FEMALE	MALE	FEMALE		
8	1 (0.39%)	0 0.00%	2 (3.33%)	0 0.00%	3 (0.89%)	
9	16 (6.30%)	2 (13.33%)	24 (40.00%)	1 (14.29%)	43 (12.80%)	
10	52 (20.47%)	5 (33.33%)	15 (25.00%)	2 (28.57%)	74 (22.02%)	
11	48 (18.90%)	2 (13.33%)	11 (18.33%)	0 0.00%	61 (18.15%)	
12	40 (15.75%)	2 (13.33%)	2 (3.33%)	1 (14.29%)	45 (13.39%)	
HSG	84 (33.07%)	3 (20.00%)	2 (3.33%)	2 (28.57%)	91 (27.08%)	
GED	7 (2.76%)	0 0.00%	0 0.00%	1 (14.29%)	8 (2.38%)	
Others **	6 (2.36%)	1 (6.67%)	4 (6.67%)	0 0.00%	11 (3.27%)	
Total	254 (100.00%)	15 (100.00%)	60 (100.00%)	7 (100.00%)	336 (100.00%)	

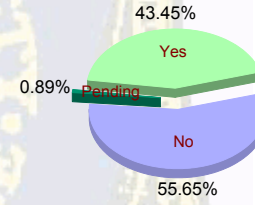


** Includes Aged Out Juveniles and Pending Records

Special Education Services

Yes	110 (43.31%)	6 (40.00%)	27 (45.00%)	3 (42.86%)	146 (43.45%)
No	143 (56.30%)	9 (60.00%)	31 (51.67%)	4 (57.14%)	187 (55.65%)
Pending	1 (0.39%)	0 0.00%	2 (3.33%)	0 0.00%	3 (0.89%)
Total	254 (100.00%)	15 (100.00%)	60 (100.00%)	7 (100.00%)	336 (100.00%)

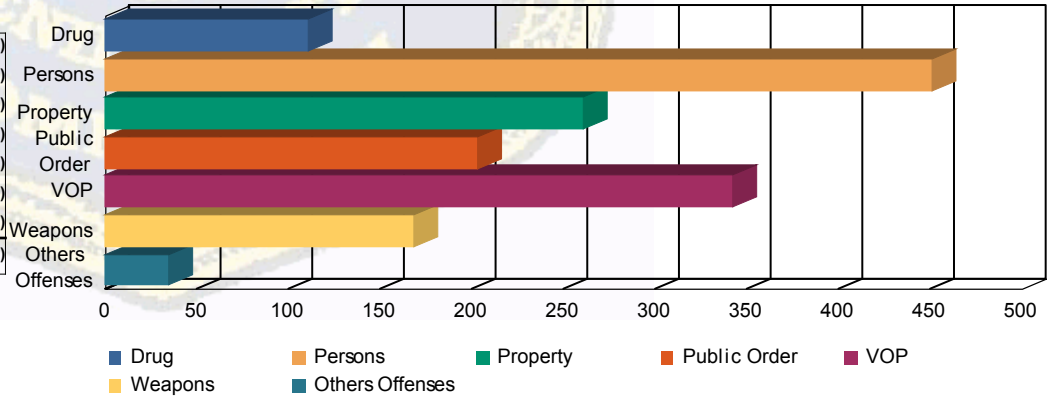
Special Education



Offense Categories

Drug	83 (6.42%)	6 (8.33%)	19 (10.27%)	3 (14.29%)	111 (7.07%)
Persons	386 (29.88%)	16 (22.22%)	45 (24.32%)	4 (19.05%)	451 (28.73%)
Property	227 (17.57%)	10 (13.89%)	23 (12.43%)	1 (4.76%)	261 (16.62%)
Public Order	164 (12.69%)	14 (19.44%)	20 (10.81%)	5 (23.81%)	203 (12.93%)
VOP	267 (20.67%)	16 (22.22%)	51 (27.57%)	8 (38.10%)	342 (21.78%)
Weapons	142 (10.99%)	8 (11.11%)	18 (9.73%)	0 0.00%	168 (10.70%)
Others Offenses	23 (1.78%)	2 (2.78%)	9 (4.86%)	0 0.00%	34 (2.17%)
Total *	1,292 (100.00%)	72 (100.00%)	185 (100.00%)	21 (100.00%)	1,570 (100.00%)

Offense Categories



* Juveniles may have multiple offenses