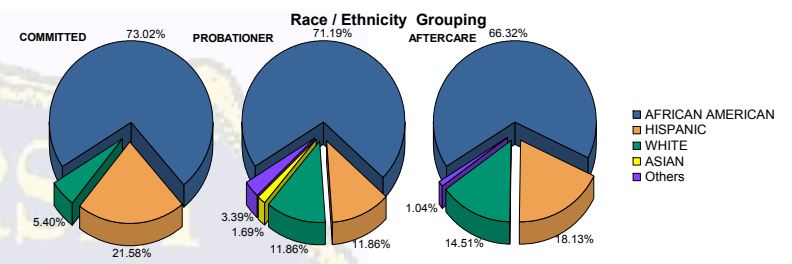


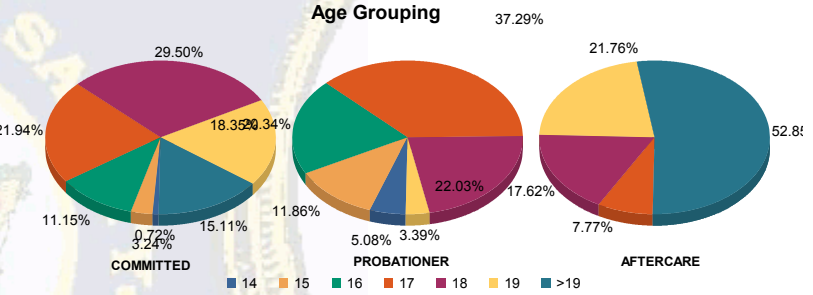


Juvenile Demographics and Statistics

Race/Ethnicity	COMMITTED		PROBATIONER		AFTERCARE		Total							
	MALE	FEMALE	MALE	FEMALE	MALE	FEMALE								
AFRICAN AMERICAN	199	74.25%	4	40.00%	40	71.43%	2	66.67%	118	65.56%	10	76.92%	373	70.38%
HISPANIC	57	21.27%	3	30.00%	6	10.71%	1	33.33%	33	18.33%	2	15.38%	102	19.25%
WHITE	12	4.48%	3	30.00%	7	12.50%	0	0.00%	27	15.00%	1	7.69%	50	9.43%
ASIAN	0	0.00%	0	0.00%	1	1.79%	0	0.00%	0	0.00%	0	0.00%	1	0.19%
Others	0	0.00%	0	0.00%	2	3.57%	0	0.00%	2	1.11%	0	0.00%	4	0.75%
Total	268	100.00%	10	100.00%	56	100.00%	3	100.00%	180	100.00%	13	100.00%	530	100.00%



Age	COMMITTED	PROBATIONER	AFTERCARE	Total
14	2	0	3	5
15	9	0	7	16
16	30	1	11	43
17	57	4	20	98
18	80	2	13	129
19	50	1	2	95
>19	40	2	0	144
Total	268	10	56	530

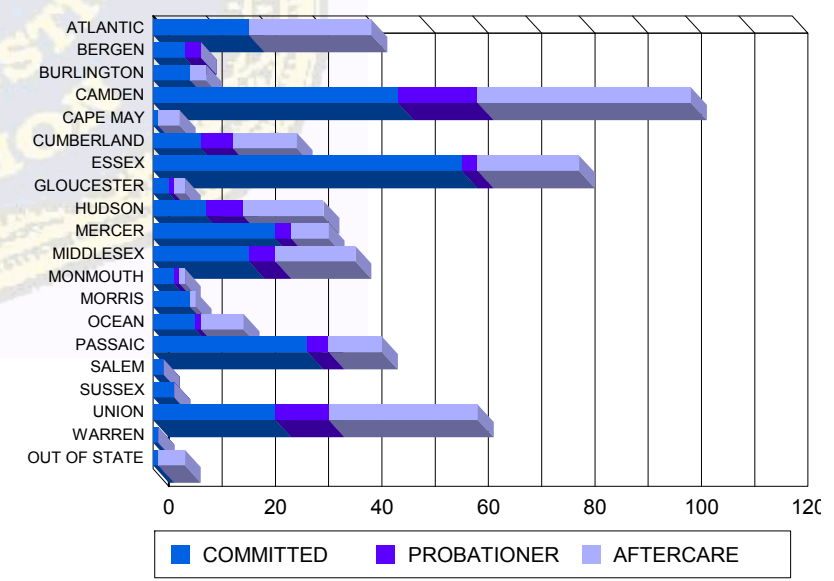


Average Age	COMMITTED	PROBATIONER	AFTERCARE	Total
Average Age	18.07	18.00	16.70	18.70

Sentencing County

Sentencing County	COMMITTED	PROBATIONER	AFTERCARE	Total
ATLANTIC	18	0	0	18
BERGEN	6	0	3	9
BURLINGTON	7	0	0	7
CAMDEN	45	1	13	60
CAPE MAY	0	0	0	0
CUMBERLAND	9	0	6	15
ESSEX	56	2	3	61
GLOUCESTER	2	1	1	4
HUDSON	10	0	7	17
MERCER	22	1	3	26
MIDDLESEX	17	1	5	23
MONMOUTH	4	0	1	5
MORRIS	6	1	0	7
OCEAN	8	0	0	8
PASSAIC	28	1	4	33
SALEM	2	0	0	2
SUSSEX	3	1	0	4
UNION	23	0	10	33
WARREN	1	0	0	1
OUT OF STATE	1	0	0	1
Total	268	10	56	530

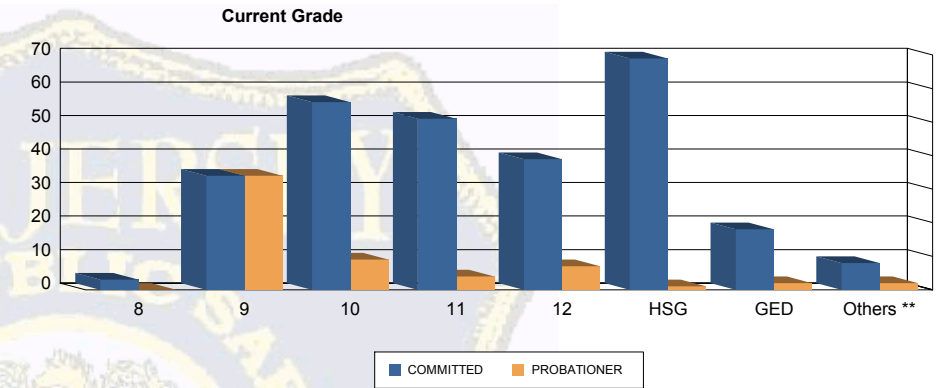
Count of Juveniles By Sentencing County





Juvenile Demographics and Statistics

Current Grade	COMMITTED		PROBATIONER		Total	
	MALE	FEMALE	MALE	FEMALE		
8	3 (1.12%)	0 0.00%	0 0.00%	0 0.00%	3 (0.89%)	
9	33 (12.31%)	1 (10.00%)	33 (58.93%)	1 (33.33%)	68 (20.18%)	
10	54 (20.15%)	2 (20.00%)	7 (12.50%)	2 (66.67%)	65 (19.29%)	
11	48 (17.91%)	3 (30.00%)	4 (7.14%)	0 0.00%	55 (16.32%)	
12	37 (13.81%)	2 (20.00%)	7 (12.50%)	0 0.00%	46 (13.65%)	
HSG	68 (25.37%)	1 (10.00%)	1 (1.79%)	0 0.00%	70 (20.77%)	
GED	17 (6.34%)	1 (10.00%)	2 (3.57%)	0 0.00%	20 (5.93%)	
Others **	8 (2.99%)	0 0.00%	2 (3.57%)	0 0.00%	10 (2.97%)	
Total	268 (100.00%)	10 (100.00%)	56 (100.00%)	3 (100.00%)	337 (100.00%)	

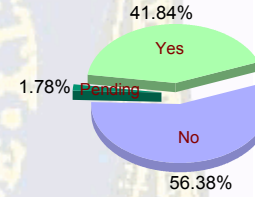


** Includes Aged Out Juveniles and Pending Records

Special Education Services

Yes	113 (42.16%)	5 (50.00%)	21 (37.50%)	2 (66.67%)	141 (41.84%)
No	151 (56.34%)	5 (50.00%)	33 (58.93%)	1 (33.33%)	190 (56.38%)
Pending	4 (1.49%)	0 0.00%	2 (3.57%)	0 0.00%	6 (1.78%)
Total	268 (100.00%)	10 (100.00%)	56 (100.00%)	3 (100.00%)	337 (100.00%)

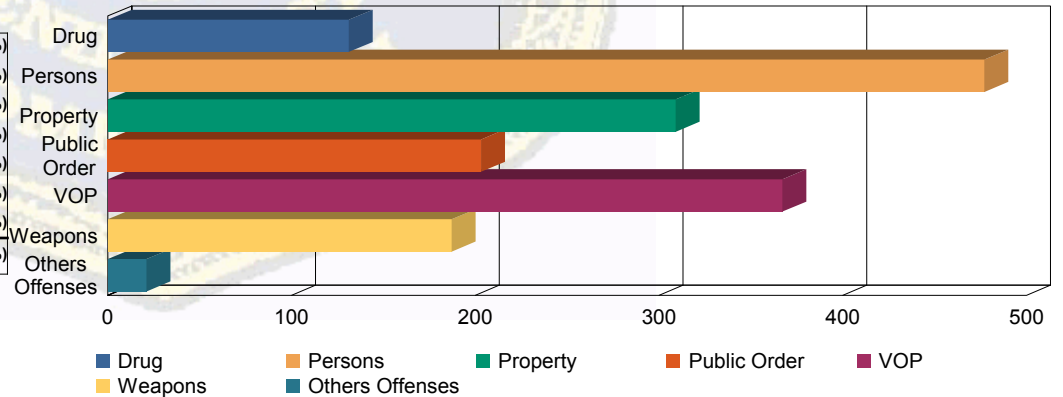
Special Education



Offense Categories

Drug	118 (7.81%)	3 (5.00%)	10 (8.33%)	0 0.00%	131 (7.73%)
Persons	431 (28.52%)	15 (25.00%)	30 (25.00%)	1 (25.00%)	477 (28.14%)
Property	283 (18.73%)	11 (18.33%)	15 (12.50%)	0 0.00%	309 (18.23%)
Public Order	182 (12.05%)	10 (16.67%)	11 (9.17%)	0 0.00%	203 (11.98%)
VOP	308 (20.38%)	13 (21.67%)	43 (35.83%)	3 (75.00%)	367 (21.65%)
Weapons	169 (11.18%)	7 (11.67%)	11 (9.17%)	0 0.00%	187 (11.03%)
Others Offenses	20 (1.32%)	1 (1.67%)	0 0.00%	0 0.00%	21 (1.24%)
Total *	1,511 (100.00%)	60 (100.00%)	120 (100.00%)	4 (100.00%)	1,695 (100.00%)

Offense Categories



* Juveniles may have multiple offenses