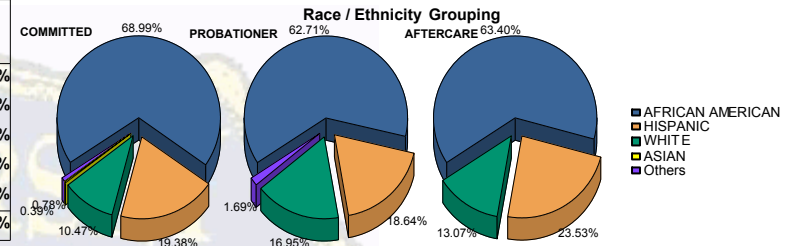


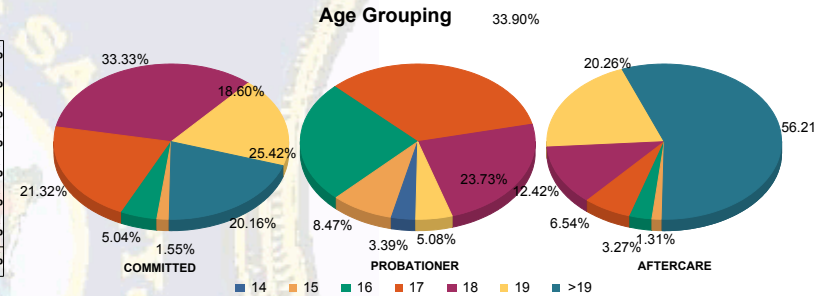


Juvenile Demographics and Statistics

Race/Ethnicity	COMMITTED		PROBATIONER		AFTERCARE		Total							
	MALE	FEMALE	MALE	FEMALE	MALE	FEMALE								
AFRICAN AMERICAN	172	69.92%	6	50.00%	35	63.64%	2	50.00%	92	65.25%	5	41.67%	312	66.38%
HISPANIC	49	19.92%	1	8.33%	10	18.18%	1	25.00%	34	24.11%	2	16.67%	97	20.64%
WHITE	22	8.94%	5	41.67%	9	16.36%	1	25.00%	15	10.64%	5	41.67%	57	12.13%
ASIAN	1	0.41%	0	0.00%	0	0.00%	0	0.00%	0	0.00%	0	0.00%	1	0.21%
Others	2	0.81%	0	0.00%	1	1.82%	0	0.00%	0	0.00%	0	0.00%	3	0.64%
Total	246	100.00%	12	100.00%	55	100.00%	4	100.00%	141	100.00%	12	100.00%	470	100.00%



Age	COMMITTED	PROBATIONER	AFTERCARE	Total
14	0	0	2	2
15	4	0	4	8
16	12	1	15	28
17	52	3	18	73
18	82	4	13	99
19	46	2	3	51
>19	50	2	0	52
Total	246	12	55	470

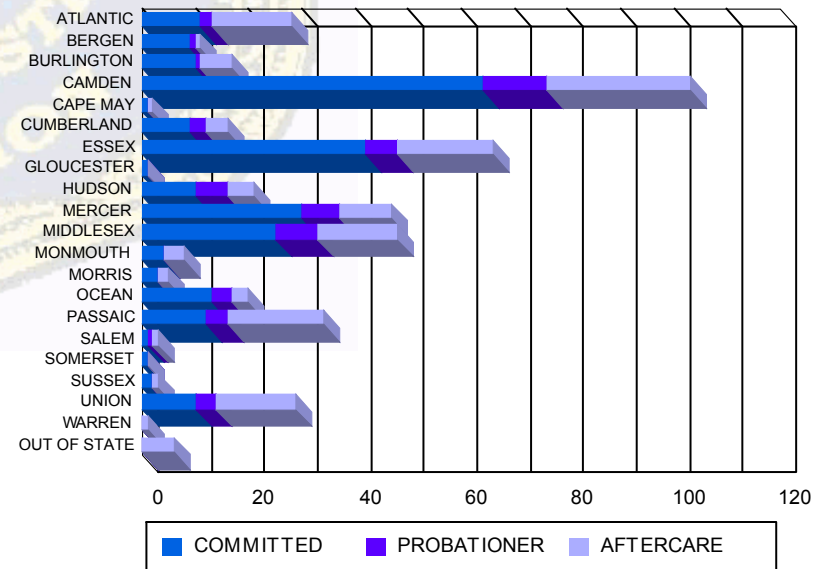


Average Age	COMMITTED	PROBATIONER	AFTERCARE	Total
Average Age	18.39	18.25	16.82	18.80

Sentencing County

Sentencing County	COMMITTED	PROBATIONER	AFTERCARE	Total
ATLANTIC	11	0	2	13
BERGEN	9	0	1	10
BURLINGTON	8	2	1	11
CAMDEN	60	4	11	75
CAPE MAY	1	0	0	1
CUMBERLAND	9	0	3	12
ESSEX	41	1	6	48
GLOUCESTER	1	0	0	1
HUDSON	10	0	6	16
MERCER	28	2	6	36
MIDDLESEX	23	2	8	33
MONMOUTH	4	0	0	4
MORRIS	3	0	0	3
OCEAN	13	0	2	15
PASSAIC	12	0	4	16
SALEM	1	0	1	2
SOMERSET	1	0	0	1
SUSSEX	1	1	0	2
UNION	10	0	4	14
WARREN	0	0	0	0
OUT OF STATE	0	0	0	0
Total	246	12	55	470

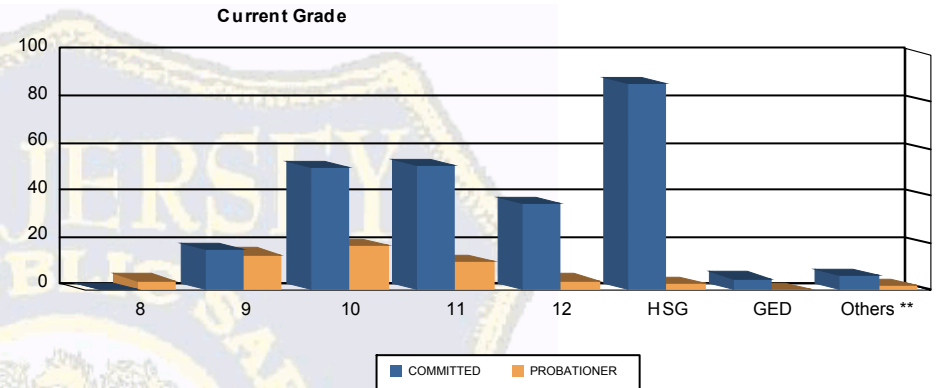
Count of Juveniles By Sentencing County





Juvenile Demographics and Statistics

Current Grade	COMMITTED		PROBATIONER		Total	
	MALE	FEMALE	MALE	FEMALE		
8	0 (0.00%)	0 (0.00%)	4 (7.27%)	0 (0.00%)	4 (1.26%)	
9	16 (6.50%)	1 (8.33%)	14 (25.45%)	1 (25.00%)	32 (10.09%)	
10	45 (18.29%)	7 (58.33%)	18 (32.73%)	1 (25.00%)	71 (22.40%)	
11	53 (21.54%)	0 (0.00%)	10 (18.18%)	2 (50.00%)	65 (20.50%)	
12	37 (15.04%)	0 (0.00%)	4 (7.27%)	0 (0.00%)	41 (12.93%)	
HSG	85 (34.55%)	3 (25.00%)	3 (5.45%)	0 (0.00%)	91 (28.71%)	
GED	5 (2.03%)	0 (0.00%)	0 (0.00%)	0 (0.00%)	5 (1.58%)	
Others **	5 (2.03%)	1 (8.33%)	2 (3.64%)	0 (0.00%)	8 (2.52%)	
Total	246 (100.00%)	12 (100.00%)	55 (100.00%)	4 (100.00%)	317 (100.00%)	

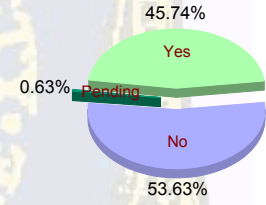


** Includes Aged Out Juveniles and Pending Records

Special Education Services

Yes	110 (44.72%)	6 (50.00%)	26 (47.27%)	3 (75.00%)	145 (45.74%)
No	134 (54.47%)	6 (50.00%)	29 (52.73%)	1 (25.00%)	170 (53.63%)
Pending	2 (0.81%)	0 (0.00%)	0 (0.00%)	0 (0.00%)	2 (0.63%)
Total	246 (100.00%)	12 (100.00%)	55 (100.00%)	4 (100.00%)	317 (100.00%)

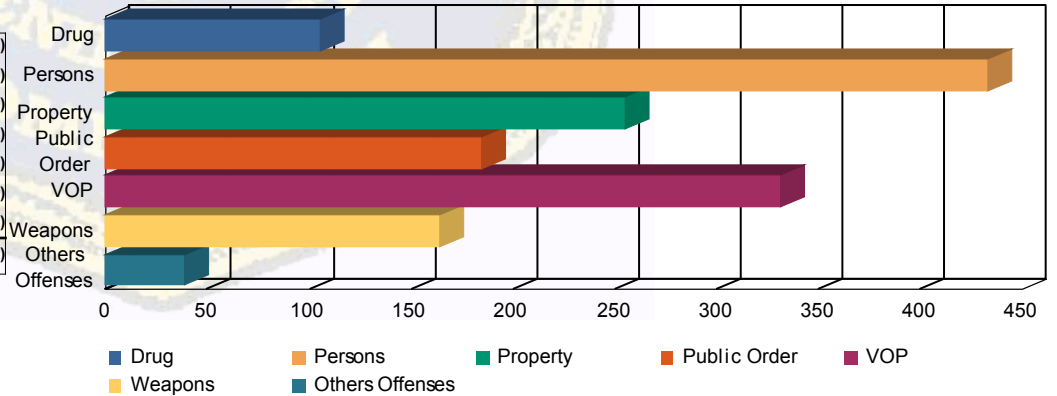
Special Education



Offense Categories

Drug	81 (6.42%)	6 (8.70%)	17 (9.83%)	1 (12.50%)	105 (6.94%)
Persons	374 (29.64%)	15 (21.74%)	42 (24.28%)	2 (25.00%)	433 (28.64%)
Property	224 (17.75%)	9 (13.04%)	22 (12.72%)	0 (0.00%)	255 (16.87%)
Public Order	156 (12.36%)	14 (20.29%)	14 (8.09%)	1 (12.50%)	185 (12.24%)
VOP	260 (20.60%)	15 (21.74%)	52 (30.06%)	4 (50.00%)	331 (21.89%)
Weapons	140 (11.09%)	8 (11.59%)	16 (9.25%)	0 (0.00%)	164 (10.85%)
Others Offenses	27 (2.14%)	2 (2.90%)	10 (5.78%)	0 (0.00%)	39 (2.58%)
Total *	1,262 (100.00%)	69 (100.00%)	173 (100.00%)	8 (100.00%)	1,512 (100.00%)

Offense Categories



* Juveniles may have multiple offenses