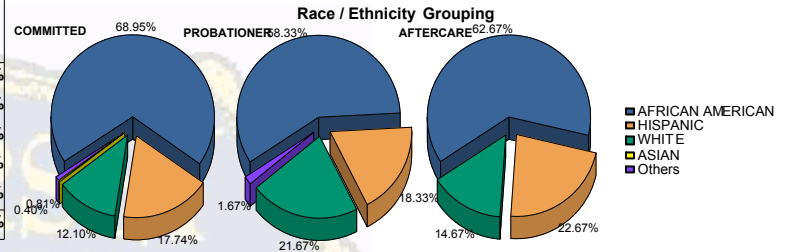


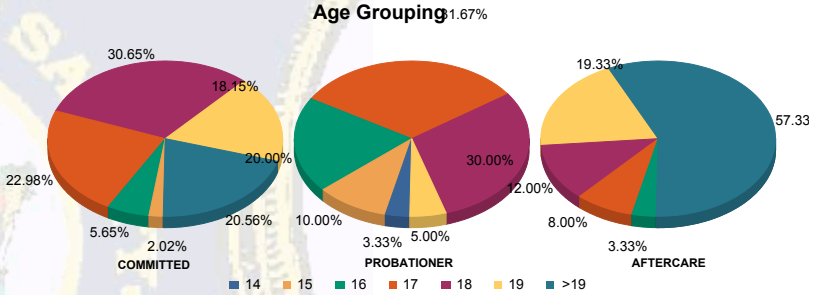


Juvenile Demographics and Statistics

Race/Ethnicity	COMMITTED		PROBATIONER		AFTERCARE		Total							
	MALE	FEMALE	MALE	FEMALE	MALE	FEMALE								
AFRICAN AMERICAN	166	70.04%	5	45.45%	33	60.00%	2	40.00%	88	64.23%	6	46.15%	300	65.50%
HISPANIC	43	18.14%	1	9.09%	10	18.18%	1	20.00%	32	23.36%	2	15.38%	89	19.43%
WHITE	25	10.55%	5	45.45%	11	20.00%	2	40.00%	17	12.41%	5	38.46%	65	14.19%
ASIAN	1	0.42%	0	0.00%	0	0.00%	0	0.00%	0	0.00%	0	0.00%	1	0.22%
Others	2	0.84%	0	0.00%	1	1.82%	0	0.00%	0	0.00%	0	0.00%	3	0.66%
Total	237	100.00%	11	100.00%	55	100.00%	5	100.00%	137	100.00%	13	100.00%	458	100.00%



Age	MALE	FEMALE	MALE	FEMALE	MALE	FEMALE	MALE	FEMALE	Total	
14	0	0.00%	0	0.00%	2	3.64%	0	0.00%	2	0.44%
15	5	2.11%	0	0.00%	5	9.09%	1	20.00%	11	2.40%
16	13	5.49%	1	9.09%	12	21.82%	0	0.00%	31	6.77%
17	54	22.78%	3	27.27%	17	30.91%	2	40.00%	88	19.21%
18	74	31.22%	2	18.18%	16	29.09%	2	40.00%	112	24.45%
19	43	18.14%	2	18.18%	3	5.45%	0	0.00%	26	5.69%
>19	48	20.25%	3	27.27%	0	0.00%	0	0.00%	81	17.91%
Total	237	100.00%	11	100.00%	55	100.00%	5	100.00%	137	29.91%

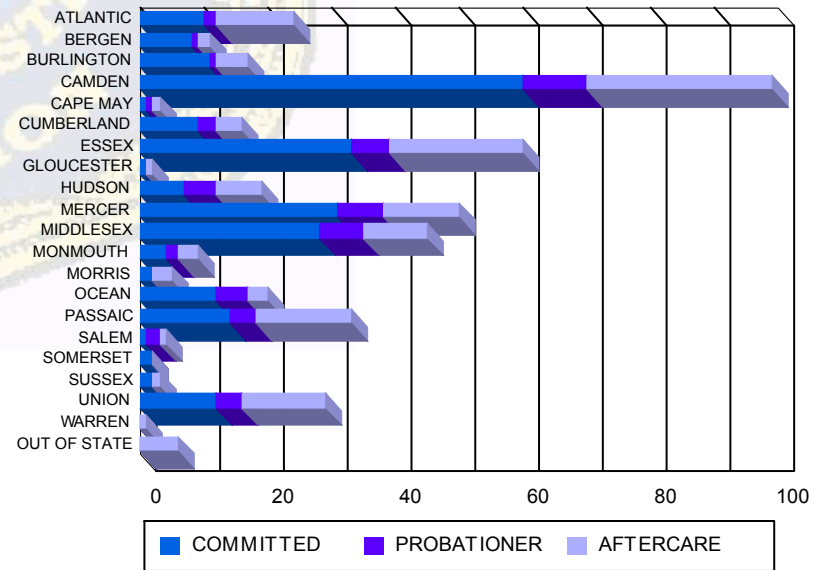


Average Age	MALE	FEMALE	MALE	FEMALE	MALE	FEMALE	Total
Average Age	18.32	18.45	16.89	17.00	20.53	19.08	18.82

Sentencing County

County	MALE	FEMALE	MALE	FEMALE	MALE	FEMALE	MALE	FEMALE	Total					
ATLANTIC	10	4.22%	0	0.00%	2	3.64%	0	0.00%	11	8.03%	1	7.69%	24	5.24%
BERGEN	8	3.38%	0	0.00%	1	1.82%	0	0.00%	2	1.46%	0	0.00%	11	2.40%
BURLINGTON	9	3.80%	2	18.18%	1	1.82%	0	0.00%	4	2.92%	1	7.69%	17	3.71%
CAMDEN	56	23.63%	4	36.36%	8	14.55%	2	40.00%	25	18.25%	4	30.77%	99	21.62%
CAPE MAY	1	0.42%	0	0.00%	1	1.82%	0	0.00%	1	0.73%	0	0.00%	3	0.66%
CUMBERLAND	9	3.80%	0	0.00%	3	5.45%	0	0.00%	4	2.92%	0	0.00%	16	3.49%
ESSEX	32	13.50%	1	9.09%	6	10.91%	0	0.00%	20	14.60%	1	7.69%	60	13.10%
GLOUCESTER	1	0.42%	0	0.00%	0	0.00%	0	0.00%	1	0.73%	0	0.00%	2	0.44%
HUDSON	7	2.95%	0	0.00%	5	9.09%	0	0.00%	7	5.11%	0	0.00%	19	4.15%
MERCER	30	12.66%	1	9.09%	6	10.91%	1	20.00%	10	7.30%	2	15.38%	50	10.92%
MIDDLESEX	26	10.97%	2	18.18%	7	12.73%	0	0.00%	10	7.30%	0	0.00%	45	9.83%
MONMOUTH	4	1.69%	0	0.00%	2	3.64%	0	0.00%	3	2.19%	0	0.00%	9	1.97%
MORRIS	2	0.84%	0	0.00%	0	0.00%	0	0.00%	3	2.19%	0	0.00%	5	1.09%
OCEAN	12	5.06%	0	0.00%	3	5.45%	2	40.00%	3	2.19%	0	0.00%	20	4.37%
PASSAIC	14	5.91%	0	0.00%	4	7.27%	0	0.00%	14	10.22%	1	7.69%	33	7.21%
SALEM	1	0.42%	0	0.00%	2	3.64%	0	0.00%	1	0.73%	0	0.00%	4	0.87%
SOMERSET	2	0.84%	0	0.00%	0	0.00%	0	0.00%	0	0.00%	0	0.00%	2	0.44%
SUSSEX	1	0.42%	1	9.09%	0	0.00%	0	0.00%	1	0.73%	0	0.00%	3	0.66%
UNION	12	5.06%	0	0.00%	4	7.27%	0	0.00%	11	8.03%	2	15.38%	29	6.33%
WARREN	0	0.00%	0	0.00%	0	0.00%	0	0.00%	1	0.73%	0	0.00%	1	0.22%
OUT OF STATE	0	0.00%	0	0.00%	0	0.00%	0	0.00%	5	3.65%	1	7.69%	6	1.31%
Total	237	100.00%	11	100.00%	55	100.00%	5	100.00%	137	100.00%	13	100.00%	458	100.00%

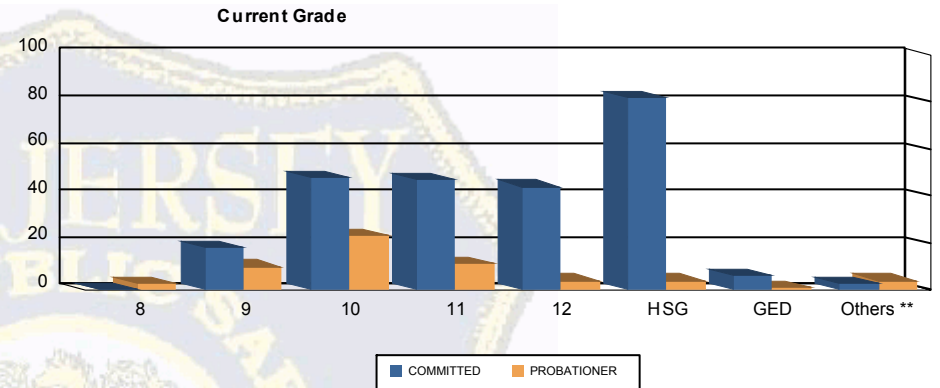
Count of Juveniles By Sentencing County





Juvenile Demographics and Statistics

Current Grade	COMMITTED		PROBATIONER		Total	
	MALE	FEMALE	MALE	FEMALE		
8	0 (0.00%)	0 (0.00%)	3 (5.45%)	0 (0.00%)	3 (0.97%)	
9	17 (7.17%)	1 (9.09%)	9 (16.36%)	1 (20.00%)	28 (9.09%)	
10	42 (17.72%)	6 (54.55%)	22 (40.00%)	1 (20.00%)	71 (23.05%)	
11	46 (19.41%)	1 (9.09%)	10 (18.18%)	1 (20.00%)	58 (18.83%)	
12	44 (18.57%)	0 (0.00%)	4 (7.27%)	0 (0.00%)	48 (15.58%)	
HSG	80 (33.76%)	2 (18.18%)	3 (5.45%)	1 (20.00%)	86 (27.92%)	
GED	6 (2.53%)	0 (0.00%)	0 (0.00%)	1 (20.00%)	7 (2.27%)	
Others **	2 (0.84%)	1 (9.09%)	4 (7.27%)	0 (0.00%)	7 (2.27%)	
Total	237 (100.00%)	11 (100.00%)	55 (100.00%)	5 (100.00%)	308 (100.00%)	

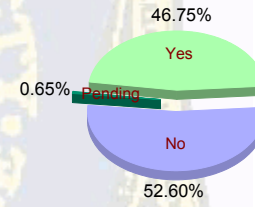


** Includes Aged Out Juveniles and Pending Records

Special Education Services

Yes	109 (45.99%)	5 (45.45%)	27 (49.09%)	3 (60.00%)	144 (46.75%)
No	128 (54.01%)	6 (54.55%)	26 (47.27%)	2 (40.00%)	162 (52.60%)
Pending	0 (0.00%)	0 (0.00%)	2 (3.64%)	0 (0.00%)	2 (0.65%)
Total	237 (100.00%)	11 (100.00%)	55 (100.00%)	5 (100.00%)	308 (100.00%)

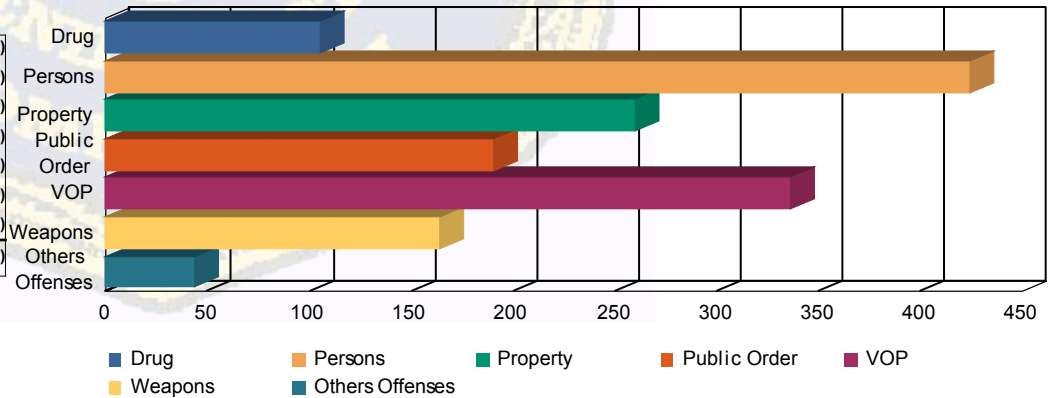
Special Education



Offense Categories

Drug	82 (6.42%)	6 (8.70%)	16 (9.47%)	1 (12.50%)	105 (6.89%)
Persons	367 (28.74%)	15 (21.74%)	41 (24.26%)	1 (12.50%)	424 (27.84%)
Property	228 (17.85%)	9 (13.04%)	23 (13.61%)	0 (0.00%)	260 (17.07%)
Public Order	162 (12.69%)	14 (20.29%)	13 (7.69%)	1 (12.50%)	190 (12.48%)
VOP	267 (20.91%)	15 (21.74%)	49 (28.99%)	5 (62.50%)	336 (22.06%)
Weapons	139 (10.88%)	8 (11.59%)	17 (10.06%)	0 (0.00%)	164 (10.77%)
Others Offenses	32 (2.51%)	2 (2.90%)	10 (5.92%)	0 (0.00%)	44 (2.89%)
Total *	1,277 (100.00%)	69 (100.00%)	169 (100.00%)	8 (100.00%)	1,523 (100.00%)

Offense Categories



* Juveniles may have multiple offenses