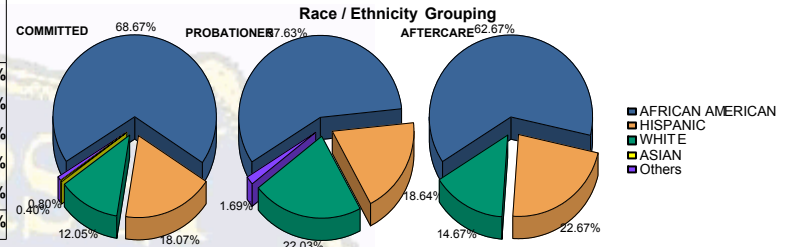




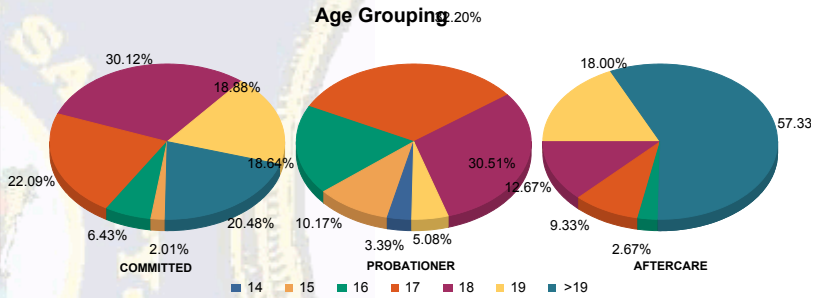
Juvenile Demographics and Statistics

Race/Ethnicity	COMMITTED		PROBATIONER		AFTERCARE		Total							
	MALE	FEMALE	MALE	FEMALE	MALE	FEMALE								
AFRICAN AMERICAN	166	69.75%	5	45.45%	32	59.26%	2	40.00%	88	64.23%	6	46.15%	299	65.28%
HISPANIC	44	18.49%	1	9.09%	10	18.52%	1	20.00%	32	23.36%	2	15.38%	90	19.65%
WHITE	25	10.50%	5	45.45%	11	20.37%	2	40.00%	17	12.41%	5	38.46%	65	14.19%
ASIAN	1	0.42%	0	0.00%	0	0.00%	0	0.00%	0	0.00%	0	0.00%	1	0.22%
Others	2	0.84%	0	0.00%	1	1.85%	0	0.00%	0	0.00%	0	0.00%	3	0.66%
Total	238	100.00%	11	100.00%	54	100.00%	5	100.00%	137	100.00%	13	100.00%	458	100.00%



Age

14	0	0.00%	0	0.00%	2	3.70%	0	0.00%	0	0.00%	0	0.00%	2	0.44%
15	5	2.10%	0	0.00%	5	9.26%	1	20.00%	0	0.00%	0	0.00%	11	2.40%
16	15	6.30%	1	9.09%	11	20.37%	0	0.00%	3	2.19%	1	7.69%	31	6.77%
17	52	21.85%	3	27.27%	17	31.48%	2	40.00%	12	8.76%	2	15.38%	88	19.21%
18	73	30.67%	2	18.18%	16	29.63%	2	40.00%	17	12.41%	2	15.38%	112	24.45%
19	45	18.91%	2	18.18%	3	5.56%	0	0.00%	24	17.52%	3	23.08%	77	16.81%
>19	48	20.17%	3	27.27%	0	0.00%	0	0.00%	81	59.12%	5	38.46%	137	29.91%
Total	238	100.00%	11	100.00%	54	100.00%	5	100.00%	137	100.00%	13	100.00%	458	100.00%

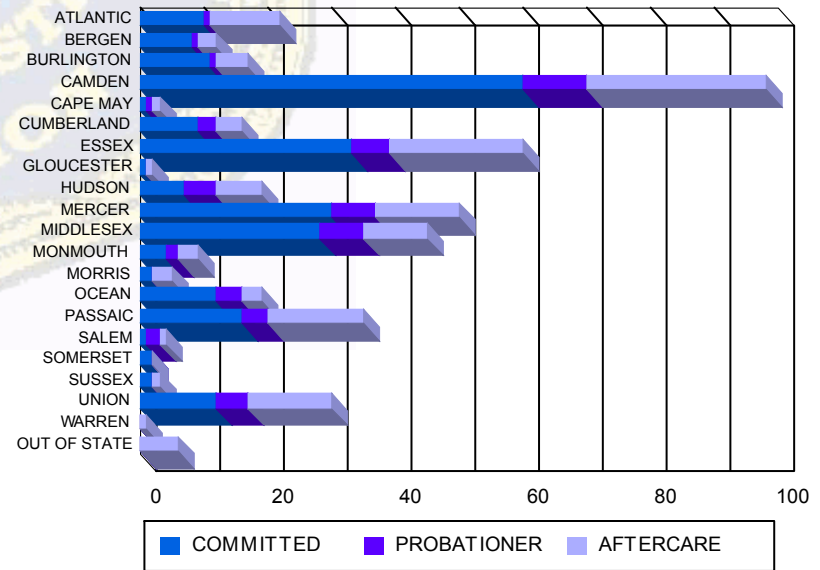


Average Age	COMMITTED	PROBATIONER	AFTERCARE	Total
Average Age	18.32	18.45	16.91	17.00
				20.55
				19.08
				18.83

Sentencing County

ATLANTIC	10	4.20%	0	0.00%	1	1.85%	0	0.00%	10	7.30%	1	7.69%	22	4.80%
BERGEN	8	3.36%	0	0.00%	1	1.85%	0	0.00%	3	2.19%	0	0.00%	12	2.62%
BURLINGTON	9	3.78%	2	18.18%	1	1.85%	0	0.00%	4	2.92%	1	7.69%	17	3.71%
CAMDEN	56	23.53%	4	36.36%	8	14.81%	2	40.00%	24	17.52%	4	30.77%	98	21.40%
CAPE MAY	1	0.42%	0	0.00%	1	1.85%	0	0.00%	1	0.73%	0	0.00%	3	0.66%
CUMBERLAND	9	3.78%	0	0.00%	3	5.56%	0	0.00%	4	2.92%	0	0.00%	16	3.49%
ESSEX	32	13.45%	1	9.09%	6	11.11%	0	0.00%	20	14.60%	1	7.69%	60	13.10%
GLOUCESTER	1	0.42%	0	0.00%	0	0.00%	0	0.00%	1	0.73%	0	0.00%	2	0.44%
HUDSON	7	2.94%	0	0.00%	5	9.26%	0	0.00%	7	5.11%	0	0.00%	19	4.15%
MERCER	29	12.18%	1	9.09%	6	11.11%	1	20.00%	11	8.03%	2	15.38%	50	10.92%
MIDDLESEX	26	10.92%	2	18.18%	7	12.96%	0	0.00%	10	7.30%	0	0.00%	45	9.83%
MONMOUTH	4	1.68%	0	0.00%	2	3.70%	0	0.00%	3	2.19%	0	0.00%	9	1.97%
MORRIS	2	0.84%	0	0.00%	0	0.00%	0	0.00%	3	2.19%	0	0.00%	5	1.09%
OCEAN	12	5.04%	0	0.00%	2	3.70%	2	40.00%	3	2.19%	0	0.00%	19	4.15%
PASSAIC	16	6.72%	0	0.00%	4	7.41%	0	0.00%	14	10.22%	1	7.69%	35	7.64%
SALEM	1	0.42%	0	0.00%	2	3.70%	0	0.00%	1	0.73%	0	0.00%	4	0.87%
SOMERSET	2	0.84%	0	0.00%	0	0.00%	0	0.00%	0	0.00%	0	0.00%	2	0.44%
SUSSEX	1	0.42%	1	9.09%	0	0.00%	0	0.00%	1	0.73%	0	0.00%	3	0.66%
UNION	12	5.04%	0	0.00%	5	9.26%	0	0.00%	11	8.03%	2	15.38%	30	6.55%
WARREN	0	0.00%	0	0.00%	0	0.00%	0	0.00%	1	0.73%	0	0.00%	1	0.22%
OUT OF STATE	0	0.00%	0	0.00%	0	0.00%	0	0.00%	5	3.65%	1	7.69%	6	1.31%
Total	238	100.00%	11	100.00%	54	100.00%	5	100.00%	137	100.00%	13	100.00%	458	100.00%

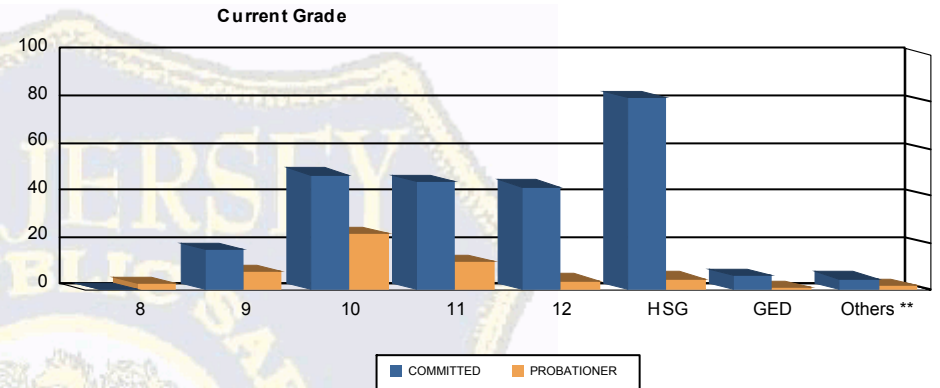
Count of Juveniles By Sentencing County





Juvenile Demographics and Statistics

Current Grade	COMMITTED		PROBATIONER		Total	
	MALE	FEMALE	MALE	FEMALE		
8	0 (0.00%)	0 (0.00%)	3 (5.56%)	0 (0.00%)	3 (0.97%)	
9	16 (6.72%)	1 (9.09%)	7 (12.96%)	1 (20.00%)	25 (8.12%)	
10	43 (18.07%)	6 (54.55%)	23 (42.59%)	1 (20.00%)	73 (23.70%)	
11	45 (18.91%)	1 (9.09%)	11 (20.37%)	1 (20.00%)	58 (18.83%)	
12	44 (18.49%)	0 (0.00%)	4 (7.41%)	0 (0.00%)	48 (15.58%)	
HSG	80 (33.61%)	2 (18.18%)	4 (7.41%)	1 (20.00%)	87 (28.25%)	
GED	6 (2.52%)	0 (0.00%)	0 (0.00%)	1 (20.00%)	7 (2.27%)	
Others **	4 (1.68%)	1 (9.09%)	2 (3.70%)	0 (0.00%)	7 (2.27%)	
Total	238 (100.00%)	11 (100.00%)	54 (100.00%)	5 (100.00%)	308 (100.00%)	

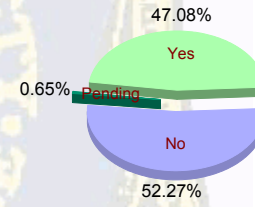


** Includes Aged Out Juveniles and Pending Records

Special Education Services

Yes	109 (45.80%)	5 (45.45%)	28 (51.85%)	3 (60.00%)	145 (47.08%)
No	127 (53.36%)	6 (54.55%)	26 (48.15%)	2 (40.00%)	161 (52.27%)
Pending	2 (0.84%)	0 (0.00%)	0 (0.00%)	0 (0.00%)	2 (0.65%)
Total	238 (100.00%)	11 (100.00%)	54 (100.00%)	5 (100.00%)	308 (100.00%)

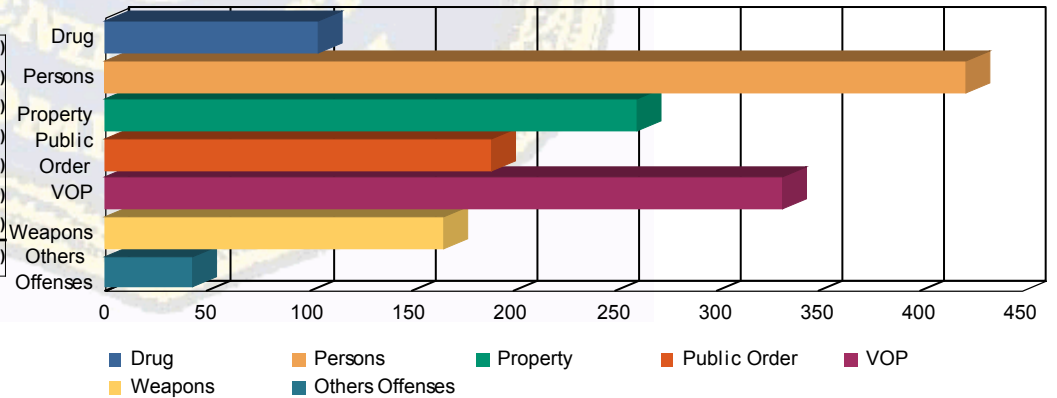
Special Education



Offense Categories

Drug	82 (6.44%)	6 (8.57%)	15 (9.09%)	1 (11.11%)	104 (6.86%)
Persons	366 (28.75%)	16 (22.86%)	38 (23.03%)	2 (22.22%)	422 (27.82%)
Property	229 (17.99%)	9 (12.86%)	23 (13.94%)	0 (0.00%)	261 (17.21%)
Public Order	161 (12.65%)	14 (20.00%)	13 (7.88%)	1 (11.11%)	189 (12.46%)
VOP	265 (20.82%)	15 (21.43%)	47 (28.48%)	5 (55.56%)	332 (21.89%)
Weapons	139 (10.92%)	8 (11.43%)	19 (11.52%)	0 (0.00%)	166 (10.94%)
Others Offenses	31 (2.44%)	2 (2.86%)	10 (6.06%)	0 (0.00%)	43 (2.83%)
Total *	1,273 (100.00%)	70 (100.00%)	165 (100.00%)	9 (100.00%)	1,517 (100.00%)

Offense Categories



* Juveniles may have multiple offenses