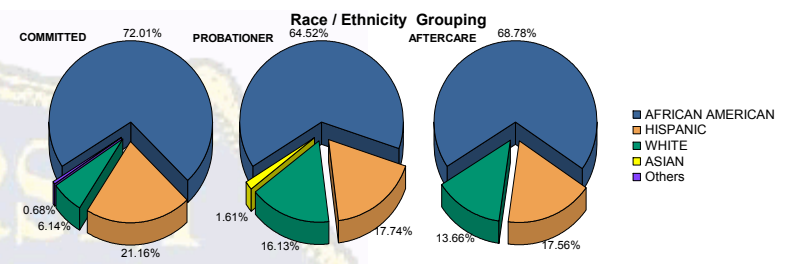


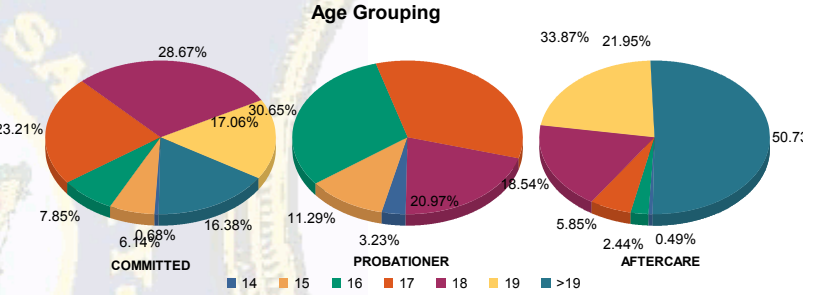


Juvenile Demographics and Statistics

Race/Ethnicity	COMMITTED		PROBATIONER		AFTERCARE		Total							
	MALE	FEMALE	MALE	FEMALE	MALE	FEMALE								
AFRICAN AMERICAN	204	72.86%	7	53.85%	38	65.52%	2	50.00%	134	68.37%	7	77.78%	392	70.00%
HISPANIC	59	21.07%	3	23.08%	11	18.97%	0	0.00%	35	17.86%	1	11.11%	109	19.46%
WHITE	15	5.36%	3	23.08%	8	13.79%	2	50.00%	27	13.78%	1	11.11%	56	10.00%
ASIAN	0	0.00%	0	0.00%	1	1.72%	0	0.00%	0	0.00%	0	0.00%	1	0.18%
Others	2	0.71%	0	0.00%	0	0.00%	0	0.00%	0	0.00%	0	0.00%	2	0.36%
Total	280	100.00%	13	100.00%	58	100.00%	4	100.00%	196	100.00%	9	100.00%	560	100.00%



Age	COMMITTED	PROBATIONER	AFTERCARE	Total
14	2 (0.71%)	0 (0.00%)	2 (3.45%)	5 (0.89%)
15	17 (6.07%)	1 (7.69%)	7 (12.07%)	25 (4.46%)
16	23 (8.21%)	0 (0.00%)	17 (29.31%)	47 (8.39%)
17	65 (23.21%)	3 (23.08%)	20 (34.48%)	101 (18.04%)
18	82 (29.29%)	2 (15.38%)	12 (20.69%)	135 (24.11%)
19	48 (17.14%)	2 (15.38%)	0 (0.00%)	95 (16.96%)
>19	43 (15.36%)	5 (38.46%)	0 (0.00%)	152 (27.14%)
Total	280	13	58	560

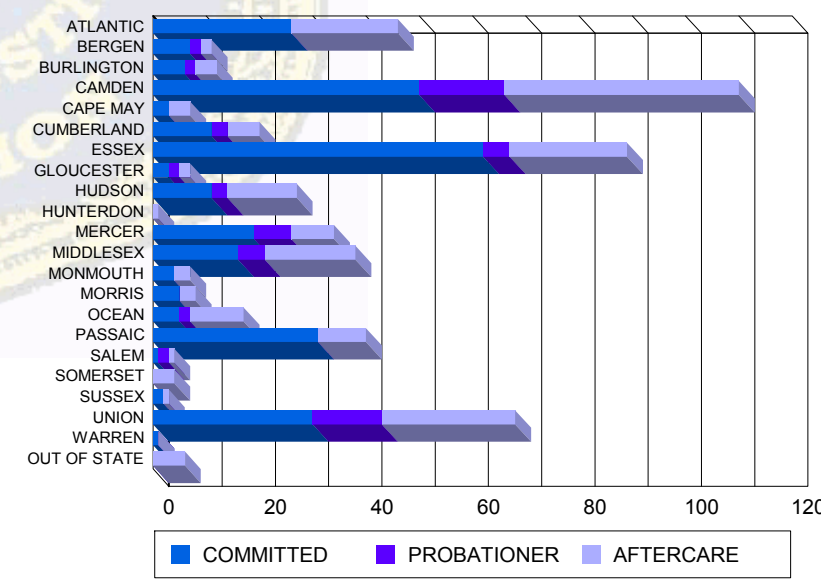


Average Age	COMMITTED	PROBATIONER	AFTERCARE	Total
Average Age	18.05	18.92	16.57	18.59

Sentencing County

Sentencing County	COMMITTED	PROBATIONER	AFTERCARE	Total
ATLANTIC	26 (9.29%)	0 (0.00%)	0 (0.00%)	26 (4.66%)
BERGEN	7 (2.50%)	0 (0.00%)	2 (3.45%)	9 (1.61%)
BURLINGTON	6 (2.14%)	0 (0.00%)	1 (1.72%)	7 (1.25%)
CAMDEN	47 (16.79%)	3 (23.08%)	14 (24.14%)	64 (11.36%)
CAPE MAY	2 (0.71%)	1 (7.69%)	0 (0.00%)	3 (0.54%)
CUMBERLAND	9 (3.21%)	2 (15.38%)	3 (5.17%)	14 (2.50%)
ESSEX	59 (21.07%)	3 (23.08%)	5 (8.62%)	67 (11.96%)
GLOUCESTER	3 (1.07%)	0 (0.00%)	2 (3.45%)	5 (0.89%)
HUDSON	11 (3.93%)	0 (0.00%)	3 (5.17%)	14 (2.50%)
HUNTERDON	0 (0.00%)	0 (0.00%)	0 (0.00%)	0 (0.00%)
MERCER	17 (6.07%)	2 (15.38%)	6 (10.34%)	25 (4.46%)
MIDDLESEX	16 (5.71%)	0 (0.00%)	5 (8.62%)	21 (3.75%)
MONMOUTH	4 (1.43%)	0 (0.00%)	0 (0.00%)	4 (0.71%)
MORRIS	5 (1.79%)	0 (0.00%)	0 (0.00%)	5 (0.89%)
OCEAN	5 (1.79%)	0 (0.00%)	2 (3.45%)	7 (1.25%)
PASSAIC	30 (10.71%)	1 (7.69%)	0 (0.00%)	31 (5.54%)
SALEM	1 (0.36%)	0 (0.00%)	2 (3.45%)	3 (0.54%)
SOMERSET	0 (0.00%)	0 (0.00%)	0 (0.00%)	0 (0.00%)
SUSSEX	1 (0.36%)	1 (7.69%)	0 (0.00%)	2 (0.36%)
UNION	30 (10.71%)	0 (0.00%)	13 (22.41%)	43 (7.69%)
WARREN	1 (0.36%)	0 (0.00%)	0 (0.00%)	1 (0.18%)
OUT OF STATE	0 (0.00%)	0 (0.00%)	0 (0.00%)	0 (0.00%)
Total	280	13	58	560

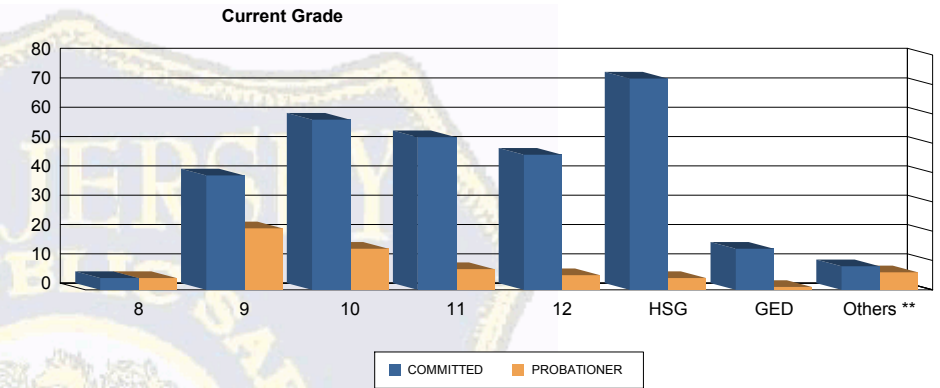
Count of Juveniles By Sentencing County





Juvenile Demographics and Statistics

Current Grade	COMMITTED		PROBATIONER		Total
	MALE	FEMALE	MALE	FEMALE	
8	4 (1.43%)	0 (0.00%)	4 (6.90%)	0 (0.00%)	8 (2.25%)
9	38 (13.57%)	1 (7.69%)	18 (31.03%)	3 (75.00%)	60 (16.90%)
10	55 (19.64%)	3 (23.08%)	14 (24.14%)	0 (0.00%)	72 (20.28%)
11	48 (17.14%)	4 (30.77%)	7 (12.07%)	0 (0.00%)	59 (16.62%)
12	45 (16.07%)	1 (7.69%)	4 (6.90%)	1 (25.00%)	51 (14.37%)
HSG	70 (25.00%)	2 (15.38%)	4 (6.90%)	0 (0.00%)	76 (21.41%)
GED	13 (4.64%)	1 (7.69%)	1 (1.72%)	0 (0.00%)	15 (4.23%)
Others **	7 (2.50%)	1 (7.69%)	6 (10.34%)	0 (0.00%)	14 (3.94%)
Total	280 (100.00%)	13 (100.00%)	58 (100.00%)	4 (100.00%)	355 (100.00%)

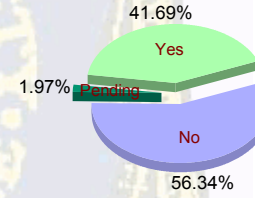


** Includes Aged Out Juveniles and Pending Records

Special Education Services

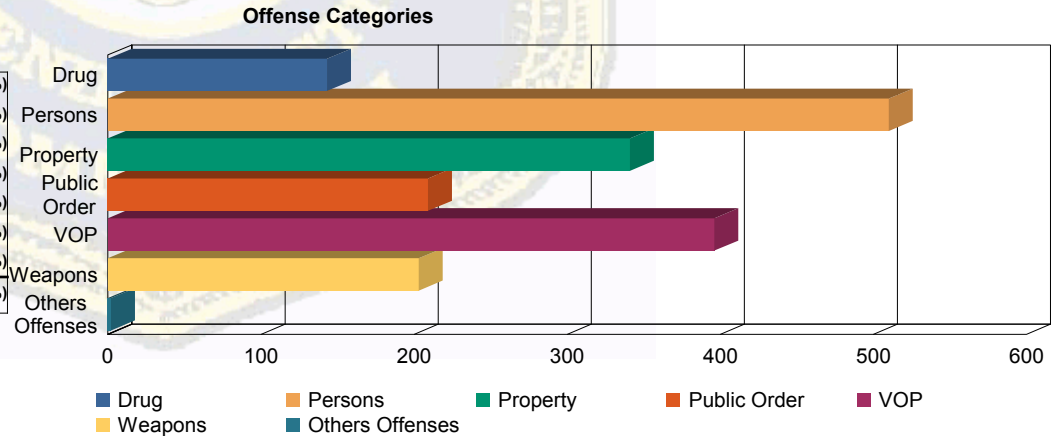
Yes	117 (41.79%)	8 (61.54%)	21 (36.21%)	2 (50.00%)	148 (41.69%)
No	162 (57.86%)	5 (38.46%)	31 (53.45%)	2 (50.00%)	200 (56.34%)
Pending	1 (0.36%)	0 (0.00%)	6 (10.34%)	0 (0.00%)	7 (1.97%)
Total	280 (100.00%)	13 (100.00%)	58 (100.00%)	4 (100.00%)	355 (100.00%)

Special Education



Offense Categories

Drug	130 (8.15%)	1 (1.89%)	12 (8.39%)	0 (0.00%)	143 (7.93%)
Persons	461 (28.88%)	16 (30.19%)	30 (20.98%)	3 (25.00%)	510 (28.27%)
Property	295 (18.48%)	10 (18.87%)	33 (23.08%)	3 (25.00%)	341 (18.90%)
Public Order	185 (11.59%)	9 (16.98%)	14 (9.79%)	1 (8.33%)	209 (11.59%)
VOP	340 (21.30%)	11 (20.75%)	40 (27.97%)	5 (41.67%)	396 (21.95%)
Weapons	184 (11.53%)	5 (9.43%)	14 (9.79%)	0 (0.00%)	203 (11.25%)
Others Offenses	1 (0.06%)	1 (1.89%)	0 (0.00%)	0 (0.00%)	2 (0.11%)
Total *	1,596 (100.00%)	53 (100.00%)	143 (100.00%)	12 (100.00%)	1,804 (100.00%)



* Juveniles may have multiple offenses