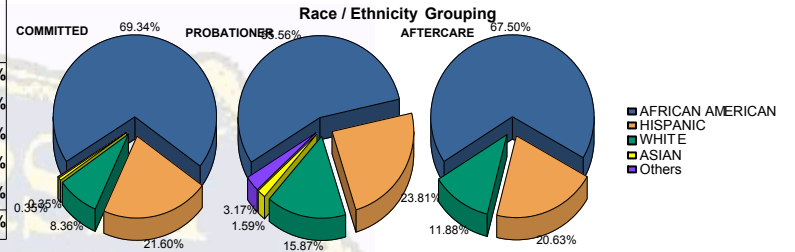


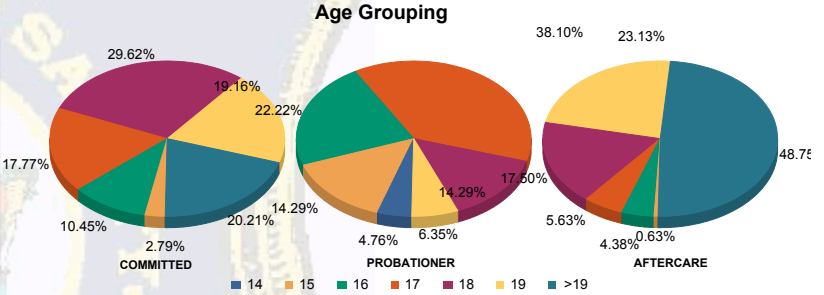


Juvenile Demographics and Statistics

Race/Ethnicity	COMMITTED		PROBATIONER		AFTERCARE		Total							
	MALE	FEMALE	MALE	FEMALE	MALE	FEMALE	MALE	FEMALE						
AFRICAN AMERICAN	193	70.18%	6	50.00%	33	57.89%	2	33.33%	103	68.21%	5	55.56%	342	67.06%
HISPANIC	61	22.18%	1	8.33%	14	24.56%	1	16.67%	31	20.53%	2	22.22%	110	21.57%
WHITE	19	6.91%	5	41.67%	7	12.28%	3	50.00%	17	11.26%	2	22.22%	53	10.39%
ASIAN	1	0.36%	0	0.00%	1	1.75%	0	0.00%	0	0.00%	0	0.00%	2	0.39%
Others	1	0.36%	0	0.00%	2	3.51%	0	0.00%	0	0.00%	0	0.00%	3	0.59%
<b>Total</b>	<b>275</b>	<b>100.00%</b>	<b>12</b>	<b>100.00%</b>	<b>57</b>	<b>100.00%</b>	<b>6</b>	<b>100.00%</b>	<b>151</b>	<b>100.00%</b>	<b>9</b>	<b>100.00%</b>	<b>510</b>	<b>100.00%</b>



Age	COMMITTED	PROBATIONER	AFTERCARE	Total
14	0	2	0	3
15	7	9	1	18
16	28	14	0	51
17	49	22	8	84
18	81	8	25	122
19	53	2	37	96
>19	57	0	73	136
<b>Total</b>	<b>275</b>	<b>6</b>	<b>9</b>	<b>510</b>

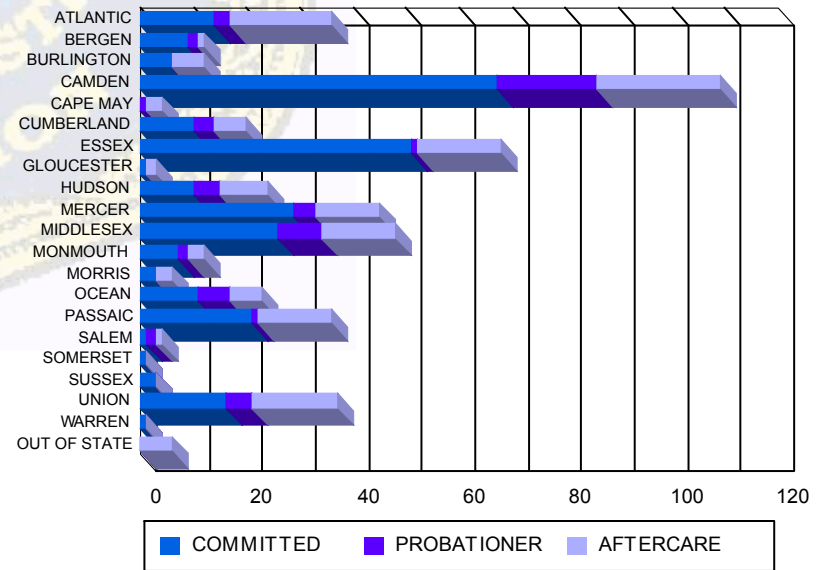


Average Age	COMMITTED	PROBATIONER	AFTERCARE	Total
Average Age	18.31	17.58	16.54	18.66

**Sentencing County**

County	COMMITTED	PROBATIONER	AFTERCARE	Total
ATLANTIC	14	3	18	36
BERGEN	9	0	1	12
BURLINGTON	6	0	6	12
CAMDEN	61	16	22	109
CAPE MAY	0	1	2	4
CUMBERLAND	10	4	5	20
ESSEX	49	1	16	68
GLOUCESTER	1	0	2	3
HUDSON	10	5	9	24
MERCER	27	4	11	45
MIDDLESEX	26	7	13	48
MONMOUTH	7	2	3	12
MORRIS	3	0	3	6
OCEAN	11	4	6	23
PASSAIC	21	1	13	36
SALEM	1	2	1	4
SOMERSET	1	0	0	1
SUSSEX	2	0	0	3
UNION	15	5	14	37
WARREN	1	0	0	1
OUT OF STATE	0	0	6	6
<b>Total</b>	<b>275</b>	<b>12</b>	<b>9</b>	<b>510</b>

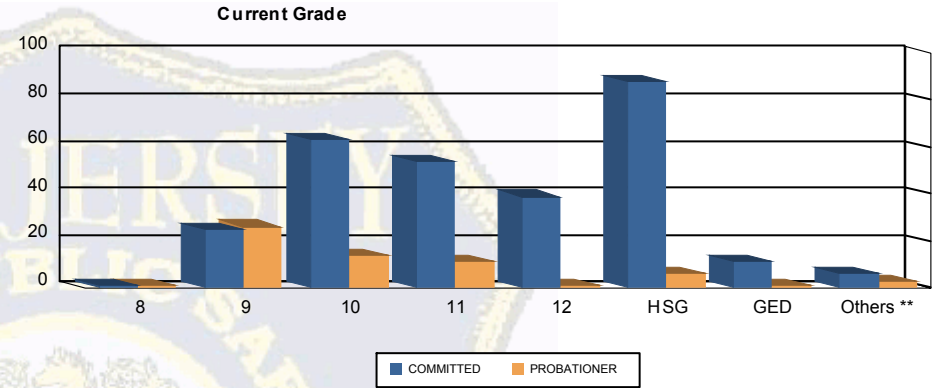
**Count of Juveniles By Sentencing County**





Juvenile Demographics and Statistics

Current Grade	COMMITTED		PROBATIONER		Total	
	MALE	FEMALE	MALE	FEMALE		
8	1 (0.36%)	0 0.00%	1 (1.75%)	0 0.00%	2 (0.57%)	
9	23 (8.36%)	2 (16.67%)	25 (43.86%)	1 (16.67%)	51 (14.57%)	
10	59 (21.45%)	4 (33.33%)	13 (22.81%)	1 (16.67%)	77 (22.00%)	
11	53 (19.27%)	1 (8.33%)	11 (19.30%)	0 0.00%	65 (18.57%)	
12	37 (13.45%)	2 (16.67%)	1 (1.75%)	0 0.00%	40 (11.43%)	
HSG	85 (30.91%)	3 (25.00%)	3 (5.26%)	3 (50.00%)	94 (26.86%)	
GED	11 (4.00%)	0 0.00%	0 0.00%	1 (16.67%)	12 (3.43%)	
Others **	6 (2.18%)	0 0.00%	3 (5.26%)	0 0.00%	9 (2.57%)	
<b>Total</b>	<b>275 (100.00%)</b>	<b>12 (100.00%)</b>	<b>57 (100.00%)</b>	<b>6 (100.00%)</b>	<b>350 (100.00%)</b>	

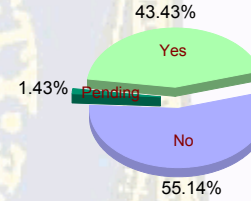


\*\* Includes Aged Out Juveniles and Pending Records

Special Education Services

Yes	117 (42.55%)	5 (41.67%)	28 (49.12%)	2 (33.33%)	152 (43.43%)
No	154 (56.00%)	7 (58.33%)	28 (49.12%)	4 (66.67%)	193 (55.14%)
Pending	4 (1.45%)	0 0.00%	1 (1.75%)	0 0.00%	5 (1.43%)
<b>Total</b>	<b>275 (100.00%)</b>	<b>12 (100.00%)</b>	<b>57 (100.00%)</b>	<b>6 (100.00%)</b>	<b>350 (100.00%)</b>

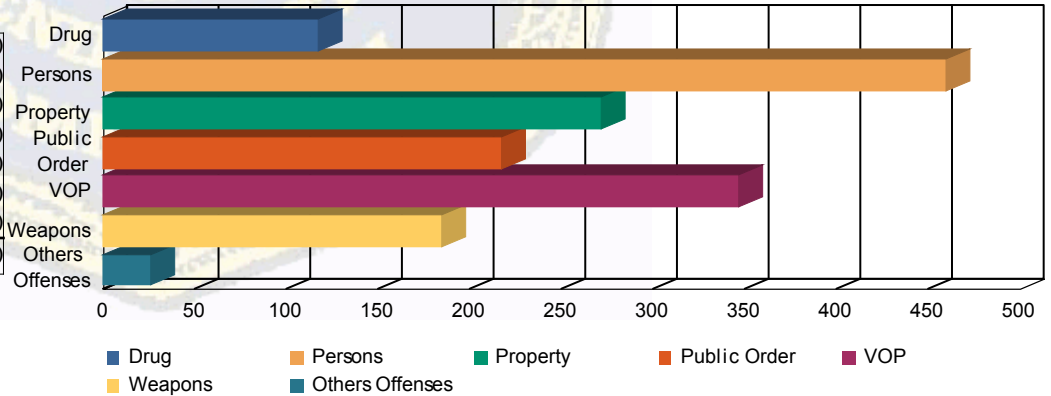
Special Education



Offense Categories

Drug	92 (6.76%)	4 (6.15%)	18 (10.34%)	3 (14.29%)	117 (7.22%)
Persons	401 (29.49%)	13 (20.00%)	42 (24.14%)	3 (14.29%)	459 (28.33%)
Property	237 (17.43%)	10 (15.38%)	22 (12.64%)	2 (9.52%)	271 (16.73%)
Public Order	177 (13.01%)	13 (20.00%)	22 (12.64%)	5 (23.81%)	217 (13.40%)
VOP	279 (20.51%)	15 (23.08%)	45 (25.86%)	7 (33.33%)	346 (21.36%)
Weapons	154 (11.32%)	9 (13.85%)	20 (11.49%)	1 (4.76%)	184 (11.36%)
Others Offenses	20 (1.47%)	1 (1.54%)	5 (2.87%)	0 0.00%	26 (1.60%)
<b>Total *</b>	<b>1,360 (100.00%)</b>	<b>65 (100.00%)</b>	<b>174 (100.00%)</b>	<b>21 (100.00%)</b>	<b>1,620 (100.00%)</b>

Offense Categories



\* Juveniles may have multiple offenses