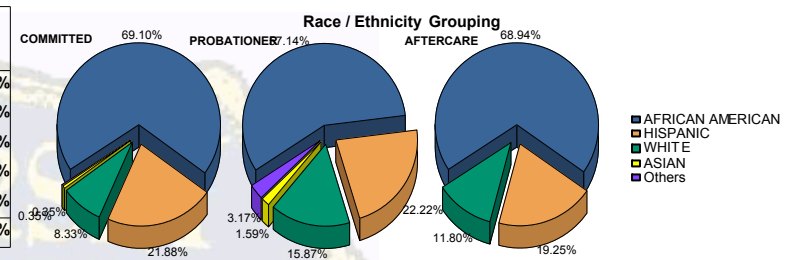


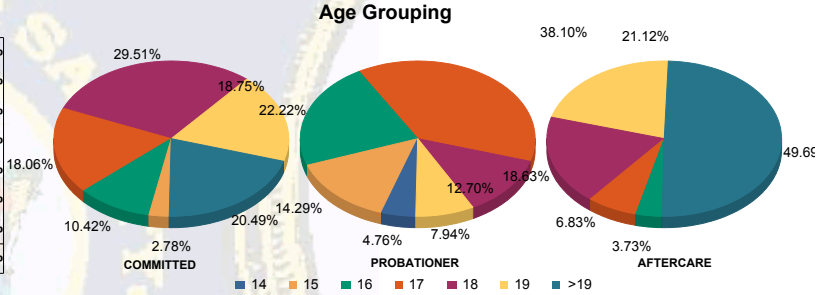


Juvenile Demographics and Statistics

Race/Ethnicity	COMMITTED		PROBATIONER		AFTERCARE		Total							
	MALE	FEMALE	MALE	FEMALE	MALE	FEMALE	MALE	FEMALE						
AFRICAN AMERICAN	193	69.93%	6	50.00%	34	58.62%	2	40.00%	106	69.74%	5	55.56%	346	67.58%
HISPANIC	62	22.46%	1	8.33%	14	24.14%	0	0.00%	29	19.08%	2	22.22%	108	21.09%
WHITE	19	6.88%	5	41.67%	7	12.07%	3	60.00%	17	11.18%	2	22.22%	53	10.35%
ASIAN	1	0.36%	0	0.00%	1	1.72%	0	0.00%	0	0.00%	0	0.00%	2	0.39%
Others	1	0.36%	0	0.00%	2	3.45%	0	0.00%	0	0.00%	0	0.00%	3	0.59%
Total	276	100.00%	12	100.00%	58	100.00%	5	100.00%	152	100.00%	9	100.00%	512	100.00%



Age	MALE	FEMALE	MALE	FEMALE	MALE	FEMALE	MALE	FEMALE	Total	
14	0	0.00%	0	0.00%	2	3.45%	1	20.00%	3	0.59%
15	7	2.54%	1	8.33%	9	15.52%	0	0.00%	17	3.32%
16	28	10.14%	2	16.67%	14	24.14%	0	0.00%	50	9.77%
17	50	18.12%	2	16.67%	23	39.66%	1	20.00%	87	16.99%
18	81	29.35%	4	33.33%	7	12.07%	1	20.00%	123	24.02%
19	52	18.84%	2	16.67%	3	5.17%	2	40.00%	93	18.16%
>19	58	21.01%	1	8.33%	0	0.00%	0	0.00%	75	14.65%
Total	276	100.00%	12	100.00%	58	100.00%	5	100.00%	512	100.00%

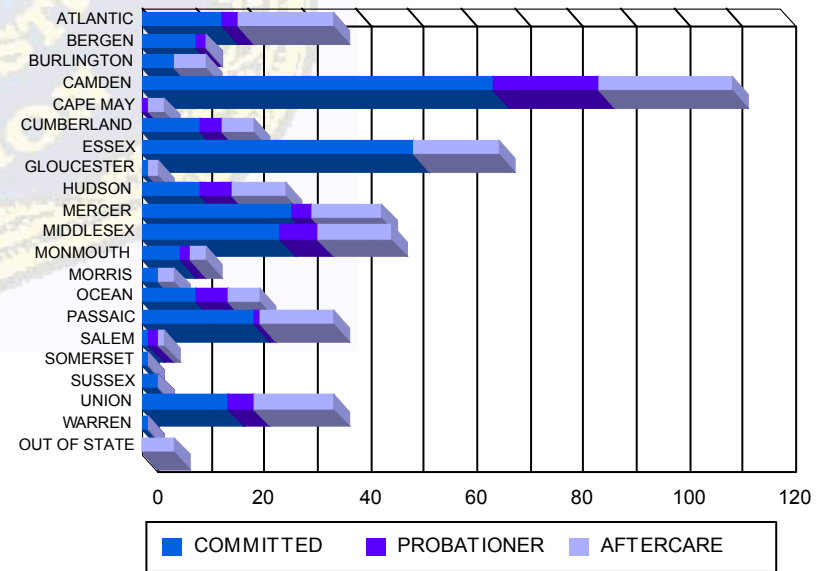


Average Age	COMMITTED	PROBATIONER	AFTERCARE	Total
Average Age	18.32	17.58	16.57	18.67

Sentencing County

Sentencing County	MALE	FEMALE	MALE	FEMALE	MALE	FEMALE	MALE	FEMALE	Total	
ATLANTIC	15	5.43%	0	0.00%	3	5.17%	0	0.00%	17	3.32%
BERGEN	10	3.62%	0	0.00%	2	3.45%	0	0.00%	12	2.34%
BURLINGTON	6	2.17%	0	0.00%	0	0.00%	0	0.00%	6	1.17%
CAMDEN	60	21.74%	6	50.00%	17	29.31%	3	60.00%	111	21.68%
CAPE MAY	0	0.00%	0	0.00%	1	1.72%	0	0.00%	2	0.39%
CUMBERLAND	11	3.99%	0	0.00%	4	6.90%	0	0.00%	15	2.95%
ESSEX	49	17.75%	2	16.67%	0	0.00%	0	0.00%	51	9.96%
GLOUCESTER	1	0.36%	0	0.00%	0	0.00%	0	0.00%	1	0.19%
HUDSON	11	3.99%	0	0.00%	6	10.34%	0	0.00%	17	3.32%
MERCER	26	9.42%	2	16.67%	4	6.90%	0	0.00%	32	6.25%
MIDDLESEX	26	9.42%	0	0.00%	7	12.07%	0	0.00%	33	6.44%
MONMOUTH	7	2.54%	0	0.00%	2	3.45%	0	0.00%	9	1.74%
MORRIS	3	1.09%	0	0.00%	0	0.00%	0	0.00%	3	0.59%
OCEAN	10	3.62%	0	0.00%	4	6.90%	2	40.00%	16	3.12%
PASSAIC	21	7.61%	0	0.00%	1	1.72%	0	0.00%	22	4.30%
SALEM	1	0.36%	0	0.00%	2	3.45%	0	0.00%	3	0.59%
SOMERSET	1	0.36%	0	0.00%	0	0.00%	0	0.00%	1	0.19%
SUSSEX	2	0.72%	1	8.33%	0	0.00%	0	0.00%	3	0.59%
UNION	15	5.43%	1	8.33%	5	8.62%	0	0.00%	21	4.10%
WARREN	1	0.36%	0	0.00%	0	0.00%	0	0.00%	1	0.19%
OUT OF STATE	0	0.00%	0	0.00%	0	0.00%	0	0.00%	0	0.00%
Total	276	100.00%	12	100.00%	58	100.00%	5	100.00%	512	100.00%

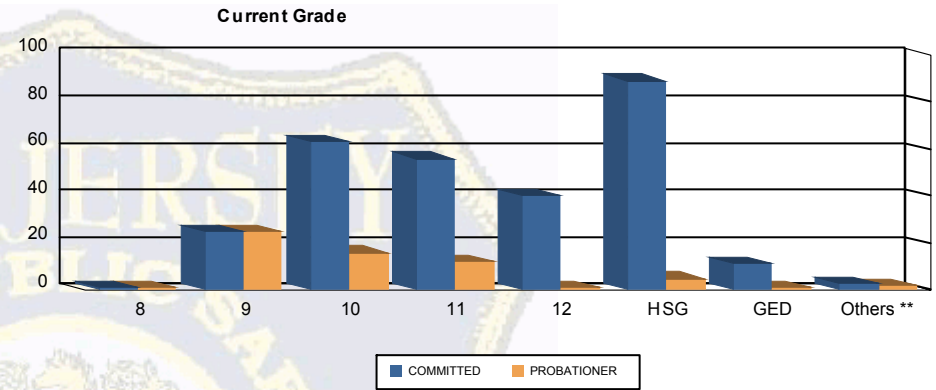
Count of Juveniles By Sentencing County





Juvenile Demographics and Statistics

Current Grade	COMMITTED		PROBATIONER		Total	
	MALE	FEMALE	MALE	FEMALE		
8	1 (0.36%)	0 0.00%	1 (1.72%)	0 0.00%	2 (0.57%)	
9	23 (8.33%)	2 (16.67%)	24 (41.38%)	1 (20.00%)	50 (14.25%)	
10	59 (21.38%)	4 (33.33%)	15 (25.86%)	1 (20.00%)	79 (22.51%)	
11	55 (19.93%)	1 (8.33%)	12 (20.69%)	0 0.00%	68 (19.37%)	
12	38 (13.77%)	2 (16.67%)	1 (1.72%)	0 0.00%	41 (11.68%)	
HSG	86 (31.16%)	3 (25.00%)	3 (5.17%)	2 (40.00%)	94 (26.78%)	
GED	11 (3.99%)	0 0.00%	0 0.00%	1 (20.00%)	12 (3.42%)	
Others **	3 (1.09%)	0 0.00%	2 (3.45%)	0 0.00%	5 (1.42%)	
Total	276 (100.00%)	12 (100.00%)	58 (100.00%)	5 (100.00%)	351 (100.00%)	

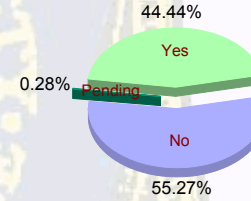


** Includes Aged Out Juveniles and Pending Records

Special Education Services

Yes	121 (43.84%)	5 (41.67%)	28 (48.28%)	2 (40.00%)	156 (44.44%)
No	154 (55.80%)	7 (58.33%)	30 (51.72%)	3 (60.00%)	194 (55.27%)
Pending	1 (0.36%)	0 0.00%	0 0.00%	0 0.00%	1 (0.28%)
Total	276 (100.00%)	12 (100.00%)	58 (100.00%)	5 (100.00%)	351 (100.00%)

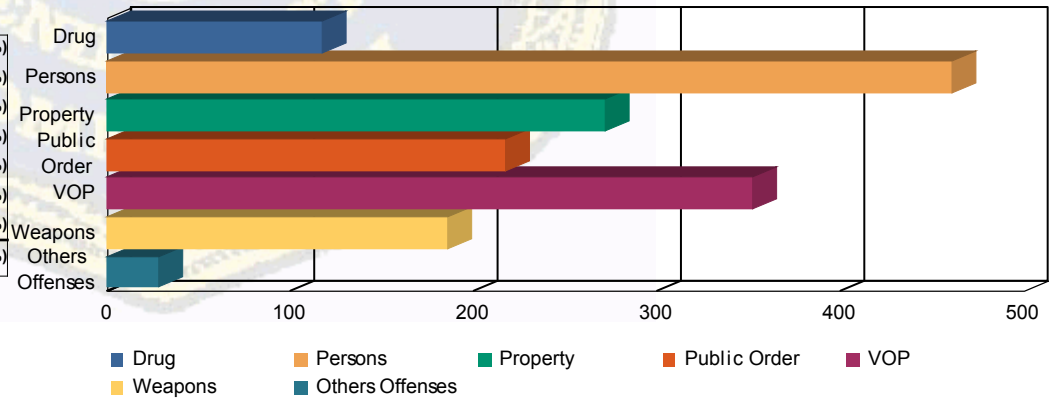
Special Education



Offense Categories

Drug	91 (6.71%)	5 (7.04%)	19 (10.27%)	2 (10.53%)	117 (7.17%)
Persons	398 (29.35%)	14 (19.72%)	44 (23.78%)	4 (21.05%)	460 (28.20%)
Property	236 (17.40%)	10 (14.08%)	24 (12.97%)	1 (5.26%)	271 (16.62%)
Public Order	176 (12.98%)	13 (18.31%)	23 (12.43%)	5 (26.32%)	217 (13.30%)
VOP	279 (20.58%)	18 (25.35%)	48 (25.95%)	7 (36.84%)	352 (21.58%)
Weapons	156 (11.50%)	9 (12.68%)	21 (11.35%)	0 0.00%	186 (11.40%)
Others Offenses	20 (1.47%)	2 (2.82%)	6 (3.24%)	0 0.00%	28 (1.72%)
Total *	1,356 (100.00%)	71 (100.00%)	185 (100.00%)	19 (100.00%)	1,631 (100.00%)

Offense Categories



* Juveniles may have multiple offenses