



NEW JERSEY RACING COMMISSION 2003

SIXTY-FOURTH ANNUAL AND STATISTICAL REPORT

FOR THE YEAR ENDING DECEMBER 31, 2003

James E. McGreevey
Governor

Peter C. Harvey
Attorney General

John J. Tucker
Chairman

Samuel M. Cannella • Lawrence R. Codey
Peter J. Cofrancesco, III • Noel Love Gross
Edward R. McGlynn • Daniel A. Monaco
Commissioners

Francesco Zanzuccki
Executive Director



State of New Jersey

OFFICE OF THE ATTORNEY GENERAL
DEPARTMENT OF LAW AND PUBLIC SAFETY
DIVISION OF NEW JERSEY RACING COMMISSION
PO Box 088
TRENTON, NJ 08625-0088

JAMES E. MCGREEVEY
Governor

PETER C. HARVEY
Attorney General

JOHN J. TUCKER
Chairman

SAMUEL M. CANNELLA
LAWRENCE R. CODEY
PETER J. COFRANCESCO, III
NOEL LOVE GROSS
EDWARD R. MCGLYNN
DANIEL A. MONACO
Commissioners

FRANCESCO ZANZUCCKI
Executive Director

The Honorable James E. McGreevey
Governor of the State of New Jersey
State House
PO Box 001
Trenton, NJ 08625

Dear Governor McGreevey:

Pursuant to the provisions of Chapter 17 of the Laws of 1940, as amended and supplemented, the Division of the New Jersey Racing Commission presents herewith its Sixty-Fourth Annual Report, covering the period from January 1, 2003 to December 31, 2003.

Respectfully yours,

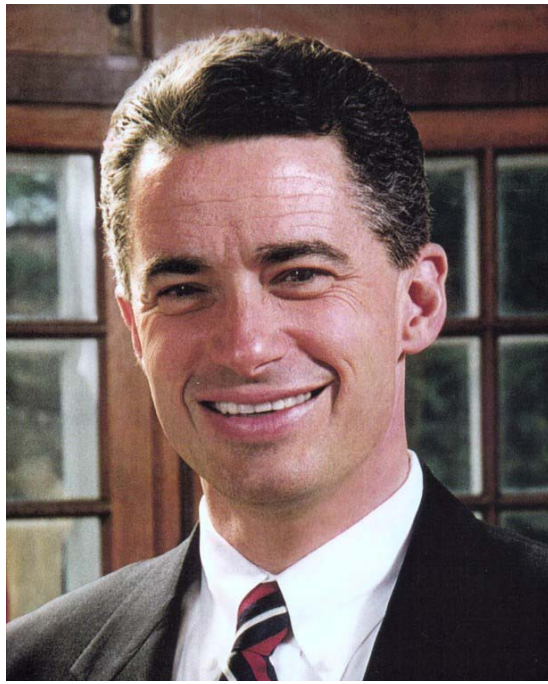
John J. Tucker, Chairman
Samuel M. Cannella, Commissioner
Lawrence R. Codey, Commissioner
Peter J. Cofrancesco, III, Commissioner
Noel Love Gross, Commissioner
Edward R. McGlynn, Commissioner
Daniel A. Monaco, Commissioner

c: Frank Zanzuccki, Executive Director

TELEPHONE: (609) 292-0613 FAX: (609) 599-1785

New Jersey Is An Equal Opportunity Employer • Printed on Recycled Paper and Recyclable





JAMES E. MCGREEVEY
Governor



PETER C. HARVEY
Attorney General

MEMBERS OF THE RACING COMMISSION



John J. Tucker, Morris Township
Chairman, 1999 - present

Mr. Tucker was elected chairman in January 2002, three years after his appointment to the Commission. Now retired, he had a long and distinguished career in the consumer products industry, most recently having served in senior management positions at Philip Morris Co., Inc. and Kraft, Inc. from 1985-1994. He received a BA in Business Administration from Upsala College and a MS in Business from Northwestern University. Mr. Tucker continues to be active in many professional and civic organizations and is a member of the Advisory Council for Human Resource Management for the Conference Board. Prior to his appointment to the Commission, Mr. Tucker owned and bred thoroughbred horses for over 15 years.

Samuel M. Cannella, Silverton
Commissioner since 1991

Mr. Cannella is a very successful business owner/executive. He is the owner of at least seven corporations including Becker Tool & Die Company. His other holdings are in realty and development and manufacturing. He is a graduate of Essex County Tool & Design School. Mr. Cannella is also a founding member and former president of NJ Chapter, National Italian American Sports Hall of Fame, a national delegate to UNICO and a member of the Regional Board of Directors of Family First Federal Savings Bank.



Lawrence R. Codey, Spring Lake
Commissioner since 2000

Mr. Codey is an attorney and his career centered around the utility and service sectors. He retired as President and Chief Operating Officer of Public Service Electric & Gas Co. in 2000, having served in that position since 1991. Prior to that he was a Director with the Trust Company of New Jersey, a financial institution. Mr. Codey is a graduate of St. Peter's College and Seton Hall School of Law. He received an MBA from Rutgers University and attended the Advanced Management Program at the Harvard Business School. He also served as a member of the Clean Air Act Advisory Committee of U.S. Environmental Protection Agency and was a member of the New Jersey Commission of Higher Education. He currently serves on the Board of Directors of Sealed Air Corp., Horizon Blue Cross/Blue Shield, Trust Company of New Jersey, New Jersey Resources Corp. and United Water Corp. He is also Chairman of the Board of Trustees of St. Peter's College.

MEMBERS OF THE RACING COMMISSION



Peter J. Cofrancesco III, Sparta
Commissioner since 2001

Mr. Cofrancesco serves as Executive Officer of the Grinnell Group of Companies. Grinnell is family owned and operated with interests in manufacturing of construction materials, transportation services, as well as commercial and residential real estate development. The company was recently named the 2003 New Jersey Family Business of the Year, an award that recognizes the significant contributions to the economy and community made by New Jersey family businesses. He attended Delaware Valley College, concentrating in Business Management and also received an Honorary Doctorate in Humane Letters from Centenary College in 2003. He is extremely active in many community and professional organizations including directorship of college and hospital foundations, the NJ State Fair and the Interlocking Concrete Pavement Institute. Mr. Cofrancesco is a leading owner and breeder of American Quarter Horses and currently serves as a Director of the American Quarter Horse Association. He and his family have owned an unprecedented 24 AQHA World Champions, and have received the prestigious Leading Owner Award five times.

Noel Love Gross, Saddle River
Former Chair and Commissioner since 1994

Mrs. Gross served as chair of the New Jersey Racing Commission from 1994 to 2001. She received her college education at Sarah Lawrence College in Bronxville, NY. In the private sector, she is President and Chief Administrative Officer of the Hudson Landing Corporation. In the public sector, Mrs. Gross has had a notable career highlighted by her appointment by President Reagan to serve as United States Alternate Representative to the 41st and 43rd United Nations General Assembly. She was asked to head the US Delegation to the UN Economic & Social Council Organizational Session, and was named head of the US delegation to the Special Session of the UN Development Programme. She has also held various positions in the Republican National Committee and, locally, is a member of Board of Trustees of 70001 Limited Development Foundation. Mrs. Gross is an owner/operator of two horse farms and her horses have won many competitions including multiple Grand Championships by *Westfields* and 1st year Green Hunter of the Year National Championship by *Ever So Dark*.



MEMBERS OF THE RACING COMMISSION

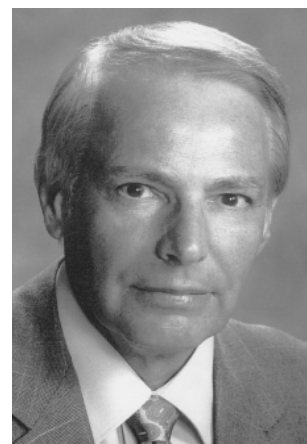


Edward R. McGlynn, Point Pleasant Beach
Commissioner since 1996

Mr. McGlynn received a B.A. degree from McKendree College in Lebanon Ill. and a J.D. from Seton Hall University School of Law. His career encompassed both the public and private sector. He served as Deputy and Chief of Staff to Governor Thomas H. Kean, and Executive and Special Assistant to Attorney General Irwin I. Kimmelman. Currently he is President of ERM Government Affairs, Inc., Senior Vice President of Government Affairs for the Alman Group, LLC, and is Of Counsel to Stone Mandia, Counsellors at Law. His community and professional affiliations are many and include medical and educational groups, and State Commissions.

Daniel A. Monaco, Woodbury
Commissioner since 1985

Dr. Monaco earned a B.S. in chemistry from Mt. Saint Mary's College and a DDS from Temple Dental School. He served in the Army as captain in the U.S. Army Dental Corps. In 1957, he went into the general practice of dentistry and retired from practice in 1997. His professional and community affiliations include several dental associations and was a member of the dental staff of Underwood Memorial Hospital having served as chief of its Department of Dentistry. In public service, he served on several environmental commissions in West Deptford Township. Dr. Monaco was a co-founder and general partner of the Gloucester County Cable TV Co. He also was an incorporator and director of the Lenape State Bank and the Bank of Gloucester County having retired from banking in 2001. Prior to joining the Commission, Dr. Monaco was an owner and breeder of both thoroughbred and standardbred race horses for over 25 years.



Frank Zanzuccki, Wall Twp.
Executive Director since 1992

Mr. Zanzuccki received a B.S. in Accounting from St. Francis College, Loretto, Pa.. He was the Chief Accountant for United Mine Workers of America from 1975-1978. He started his career with the New Jersey Racing Commission in 1978 and served in various positions and was appointed Executive Director in 1992. Mr. Zanzuccki was awarded the prestigious Len Foote Award in 1998 in recognition of outstanding contributions to the horse racing industry. He is also the first non-commissioner to be elected to the Association of Racing Commissioners International Board of Directors. In addition to this honor, Mr. Zanzuccki was subsequently elected as an officer of this international organization and currently serves as its chairman-elect.

Table of Contents

Structure and Function.....	1
Key Issues.....	3
Functional Area Highlights.....	5
Committees, Funds and Organizations	7
Racetracks and Simulcasting	9
2004 Plans and Incentives	10
New Jersey Live and Simulcasting Meets	
Gross Handle Summary 2003	11
On-Track Handle and Attendance 2003.....	12
Inter-State Wagering	12
Five Year Comparison New Jersey Thoroughbred & Harness Tracks	13
New Jersey Track Handle Statewide.....	14
Intrastate Simulcasting Handle	15
Statewide On Track Attendance.....	16
Interstate Simulcasting Handle Received	17
Summary of Commingle Handle by Track.....	18
New Jersey Live & Simulcasting Meets	
Commission Distribution Summary 2003	19
2003 Charity Days Revenue	20
Summary of Pari-Mutuel Activity Atlantic City Casinos	21
Pari-Mutuel Takeout Atlantic City Casinos	
In-State & Out-of-State Simulcasting.....	23
In-State Simulcasting	24
Out-of-State Simulcasting	25
CY 2003 License Revenue Received	
Harness.....	26
Thoroughbred	27
Harness & Thoroughbred Combined	28
Revenue to State 2003	29
Actual Expired Out Per Tote.....	29

STRUCTURE & FUNCTION

New Jersey Racing Commission

MISSION STATEMENT

The New Jersey Racing Commission (“NJRC”), a Division within the Department of Law and Public Safety, is responsible for regulating the horse race industry in the State through vigilant oversight of all racing related activities to ensure the integrity of the sport and the safety of its participants.

Commission Structure

Horse racing in New Jersey is regulated by nine Commissioners who, by law, are appointed by the Governor, with the advice and consent of the Senate. They set policy and rule on all matters affecting racing such as issuing permits to conduct horse racing meets, approving expenditures and adjudicating licensing matters. This year, seven individuals served as Commissioners (two seats remained vacant): John J. Tucker, Chair, Samuel M. Cannella, Lawrence R. Codey, Peter J. Cofrancesco, III, Noel Love Gross, Edward R. McGlynn, and Daniel A. Monico.

The Commissioners employ staff to effect policy including an Executive Director who is responsible for overseeing the day-to-day operations of the Commission in accordance with accepted business and financial practices. Francesco Zanzuccki serves as the Executive Director.

NJRC has a staff of 67 full - time employees who conduct the daily functions of regulating horse racing. It also maintains a pool of 40 part - time workers to supplement staff as needed. Activities are divided into four functional areas: Administrative/financial, Racing Operations, Pari-Mutuels and Investigations.

Administrative/Financial

Much of the general administrative functions are performed by the Department of Law & Public Safety’s Consolidated Administrative and Support Services unit specifically organized to streamline the personnel, budget and logistics functions of several State agencies.

Commission personnel perform administrative functions specific to racing matters including rule and regulation composition, staffing and scheduling, communications with and oversight of industry-related organizations, adjudication support, and report writing. Commission staff maintains a horse racing financial system that records and calculates all receipts and payments of funds from pari-mutuel wagering. In addition, it monitors the finances of certain industry organizations as required or requested.

Racing Operations

All matters related to the regulation of the actual “running of the races” are the responsibility of the employees in this functional area.

Each individual and entity associated with horse racing must be licensed by Commission personnel. All participants must also be fingerprinted. A state-of-the-art computer system networks the Trenton office with all satellite racetrack locations. The Commission has a very successful mail out program and participates in the RCI Multi-jurisdictional licensing program for owners.

The Commission employs racing officials who are present at each racetrack to monitor the running of every race in New Jersey. They issue penalties for rule infractions and rule on matters affecting the integrity of racing, including licensing concerns.

Veterinarians are also present at every live race meet to ensure the safety of the animals and to verify that each is fit to race.

Race horses are tested for the presence of illegal drugs after each race. These randomly selected samples undergo a complete chemical analysis at Commission-sponsored State Police Forensic Laboratory at the Meadowlands Racetrack.

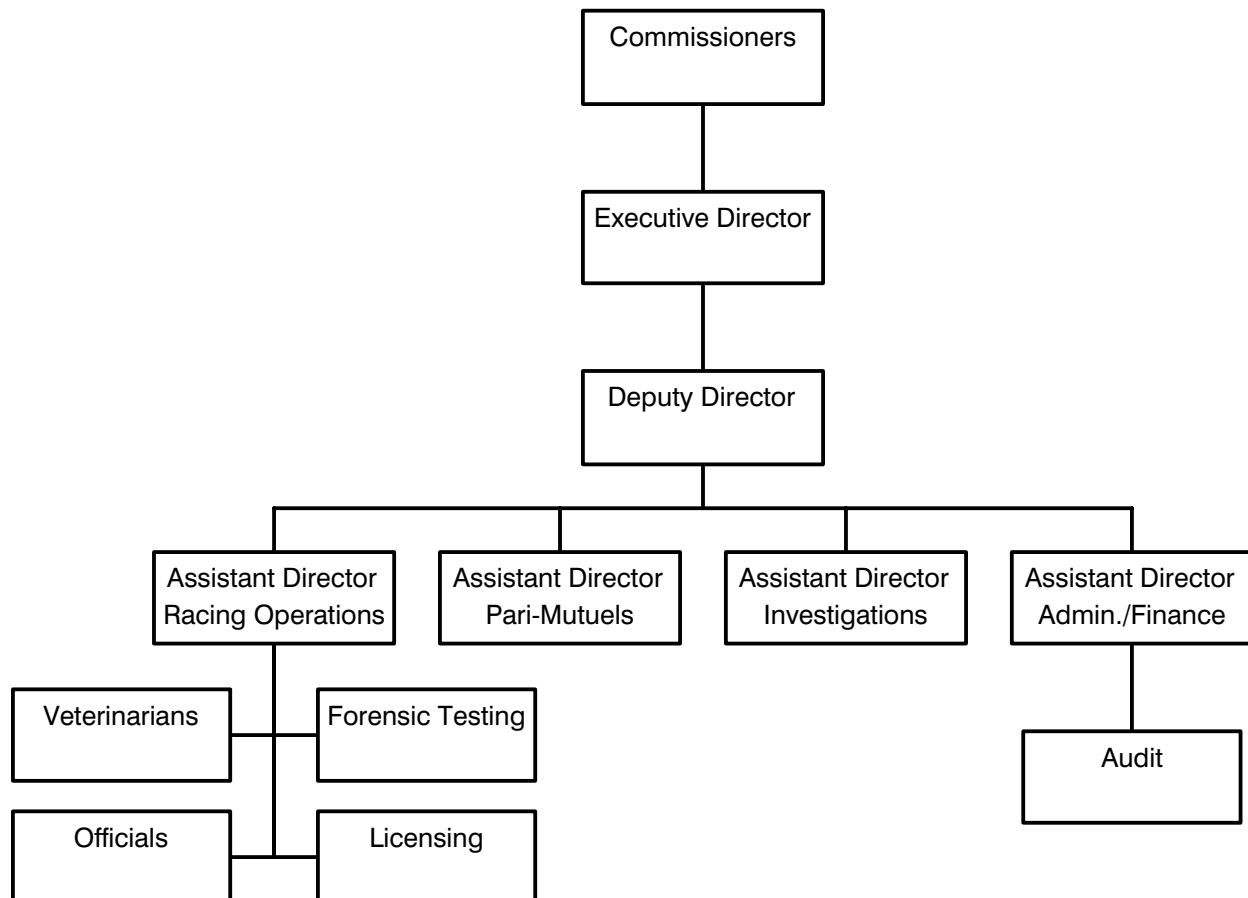
Pari-Mutuels

Every wager made on every live and simulcast race is recorded and checked for accuracy and compliance with Commission rules and regulations. Commission staff calculate financial information from these wagers for proper distribution of funds.

Investigations

An in-house investigative unit provides the Commission with the ability to oversee the integrity of racing by conducting case studies into alleged rules' violations, and participating in the litigation process to punish offenders.

NEW JERSEY RACING COMMISSION ORGANIZATIONAL STRUCTURE



KEY ISSUES 2003

New Jersey Racing Commission

A review of the key issues that affect the horse race industry in 2003 indicates an increase in the popularity of the sport but a continued concern for its integrity. The Triple Crown quest by the New York bred thoroughbred gelding *Funny Cide* and the triple crown victory by the standardbred *No Pan Intended* helped increase interest in the sport nation-wide but recurring lapses in pari-mutuel security has taxed public confidence. National horse racing organizations are attempting to resolve these wagering concerns (such as illegal insider betting and betting after races are completed) by standardizing all wagering rules and requiring the upgrade of totalizator systems.

Another concern garnering national attention is the use of illegal drugs and unacceptable performance altering drugs and therapies. Efforts continue to develop a national standard for medication use and to develop accurate testing methods for new concerns like use of bronchial dilators and shock wave therapy.

NJRC personnel are active in these movements at the national level from both an administrative and technical perspective. In effect, Executive Director Zanzucki is chairman-elect of Association of Racing Commissioners International (ARCI) and will assume the leadership role in addressing these matters.

Another significant development is the ever increasing number of states that have or will soon have enhanced revenues dedicated to horse racing from Slot Machine or Video Lottery Terminal (VLT) proceeds.

Delaware and West Virginia have these systems in place; New York likely will have VLT's in 2004; Pennsylvania and Maryland are on the verge of enacting legislation to permit their use.

As a result, these surrounding jurisdictions will be well positioned to attract quality horses to compete in their events due to lucrative financial incentives available to the horsemen.

In October, the Commission reviewed a contract presented by New Jersey Sports and Exposition Author-



ity that details the franchising of Off-track Wagering Facilities among three entities. The Commission will review individual applications for Off-track Wagering locations upon receipt.

In November, a horse racing summit, attended by leading industry representatives and key legislators, was held in Trenton to discuss the industry's economic status. It was determined that new sources of funding would be pursued to keep New Jersey racing competitive with other racing jurisdictions.

Legislation amending certain horse race bills was enacted during the year. New provisions to N.J.S.A. 5:5-25.1-25.2 and 5:5-43.2 establishes employment restrictions upon former members and employees of the Racing Commission and also permits the Commission to allocate race dates for a period not to exceed six years. Amendments to N.J.S.A. 5:5-23 reconstitutes membership of the Racing Commission and requires four of the nine commissioners to be knowledgeable in horse racing matters, two shall be recommended by the Thoroughbred Horsemen's Association and two by the Standardbred Breeders and Owners Association.

Racing dates are approved every year, usually at the November NJRC meeting. Much controversy developed around the number of dates to be raced in 2003 considering the Off-track and account wagering legislation requirement that 141 thoroughbred race dates need to be held.

After considerable debate, the dates approved by the Commission totaled 124 for thoroughbreds and 170 for standardbreds. Since no off-track wagering facility or account wagering system were to open during the year, the lower number of dates did not negatively impact this program.

The Commissioners approved 13 rules for adoption, eight of which related to pari-mutuel matters; the others approved a handicapping contest, changed reporting requirements for veterinarians' treatment slips and re-adopted casino simulcasting regulations.

Numerous matters relating to violations of racing rules were litigated and adjudicated by action of the Commissioners ranging from the detection of illegal drugs in horses on race day, to an owners' dispute over purse money, to inhumane treatment of race horses. Also approved was a Policy Directive that regulates the use of shock wave therapy, an increasing industry-wide concern.

The two major horsemen's organizations were the subject of comprehensive audits during the year. The investigation into the Thoroughbred Horsemen's Association of NJ was completed and is currently subject to legal proceedings. The Standardbred Breeders and Owners Association audit is ongoing.

Consolidation of all pari-mutuel activity was completed during the year. All wagers are calculated at one loca-

tion, namely the Meadowlands Racetrack. This single hub approach creates efficiencies of scale that reduces cost, streamlines data distribution and fosters uniform compliance with pari-mutuel rules.

Standardbred and thoroughbred horse racing is conducted at four racetracks in New Jersey - the Meadowlands Racetrack, Monmouth Park, Freehold Raceway and Atlantic City Race Course. Pari-mutuel wagering in New Jersey occurs at these locations and nine casino simulcast sites.

Wagering at New Jersey racetracks totaled \$271,069,006, wagers made outside of New Jersey on New Jersey races totaled \$676,026,571 resulting in a total handle of \$947,095,577. This represents a 3.9% decrease from last year. It is noted that there were 22 fewer days raced in 2003 compared to 2002.

Wagers made at the nine casino simulcasting sites, including a partial year for the Borgata, totaled \$116,538,690. This is \$4.6 million less than last year, a 3.8% decline.

Attendance during live racing totaled 1,895,968 representing a 10% decrease from last year.

NJRC 's FY 2003 budget totaled \$8,690,058. It is comprised of \$500,000 in licensing revenue and \$650,000 in revenue from uncashed tickets. The balance of \$7,540,058 is generated from direct assessments to racetracks and horsemen's groups.



FUNCTIONAL AREA HIGHLIGHTS

New Jersey Racing Commission

Administrative/Financial

The administrative and financial area is responsible for effecting policies of the Commission as directed by the Executive Director. Staff assigned to this area prepares annual reports, authors rules and regulations, maintains the Commission's web site www.NJRCONLINE.com, prepares special reports, liaisons with other State agencies and industry groups, maintains the horse racing financial system, prepares financial statements and conducts audits. (Detailed financial reports appear at the end of this report.)

Racing Operations

All activities related to the actual running of races is the responsibility of this section. Staff consists of licensing personnel, racing officials (stewards and judges), testing lab chemists, and veterinarians.

Licensing is conducted at all racetracks, the Trenton office, and through the mail. The computerized licensing system was upgraded this year to an online interactive site. This totally redesigned system is more user friendly and is more efficient in report compilation.

The Commission issued over 15,000 licenses during the year. Over one third of these licenses are processed through the Commission's mail out program and another ten percent through the RCI's Multi-jurisdic-

tional owner's licensing and fingerprinting program.

Revenue derived from the licensing function totaled over \$619,000 in 2003.

The Commission employs Racing Officials who monitor every horse race run in New Jersey. These stewards and judges also rule on matters affecting the integrity of racing, conduct hearings and issue penalties for rule violations. The Commission issued 634 rulings in 2003, of which 313 included fines payable to NJRC totaling \$85,378.

Veterinarians are present at each racetrack to examine horses for soundness prior to and after racing. Six full-time (program) veterinarians, supplemented by a per diem staff, supervise the lasix program and supervise the gathering of samples for chemical testing.

NJRC's Equine Drug Testing Program is administered at the New Jersey State Police Forensic Science Laboratory.

A staff of 15 chemists use modern testing equipment and methods to detect the presence of illegal substances in horses. In 2003, 14,374 blood samples and 8,545 urine samples were collected and tested resulting in 15 violations of the Commission's medication rules. In addition, 6,777 blood gas samples from standardbreds were collected resulting in four positives.



The Commission also randomly tests jockeys and drivers for the presence of illegal drugs. It also tests for alcohol abuse in participants and officials. In 2003, four positives were detected from 893 samples tested.

Pari-mutuel Operations

Racing Commission staff monitors all aspects of pari-mutuel wagering to ensure compliance with rules and regulations governing betting. On-site supervisors of mutuels check for accuracy of system configuration relative to wagering options, proper transmission of wagers and television signals, and accuracy of pay-outs.

All wagering activity is now processed through one computer hub located at the Meadowlands race track. Recording and reporting of all wagers occurs there and is reviewed by Commission staff. These reports are subsequently forwarded to the Commission audit section for further compilation to effectuate the distribution of funds from wagers as per law.

Investigations into irregularities in betting patterns and systems are initiated by the Assistant Director of Pari-mutuels. Special reports are requested and generated

that assist with the investigation of matters regarding pari-mutuels such as, past-posting, unusual wagering patterns, system malfunctions or manipulations or illegal cashing of tickets or betting vouchers.

Major investigations were undertaken in this area during the year including several situations where wagers were made after races started. Many of these inquiries involve cooperation with other State agencies and other racing jurisdictions.

Investigative Unit

Six individuals are assigned to this unit that is responsible for investigating matters relative to compliance with Commission rules at all racetracks and licensed off-track stabling facilities in the state. Of utmost concern are those matters that affect the integrity of racing such as race fixing, illegal administration of drugs, and licensing falsifications.

Staff also participates in review of security procedures at racetracks, personnel and accounting concerns at industry organizations, and conducts background investigations of officials.



COMMITTEES, FUNDS & ORGANIZATIONS

New Jersey Racing Commission

NJRC COMMITTEES

Veterinarian Advisory Committee

Advises the Commission on matters regarding safety, health, medical and therapeutic treatment of race horses. Most recently they provided expert advise on the use of Shock Wave Therapy (“SWT”) in the industry that resulted in the adoption of a Directive regulating its use. The Directive requires registration of all SWT machines with the State Veterinarian who will monitor its use. It also provides guidelines for reporting treatment and prohibits horses that have been treated with SWT from competing for a period of 10 days.

Backstretch Advisory Committee

An industry funded organization that provides programs and oversight for matters that affect the health and well-being of stable area employees. On site chaplains and counselors, with assistance from horsmen’s organizations and racetrack management, conduct a comprehensive program to address quality of life issues. Such programs include: drug and alcohol abuse counseling; soccer and softball leagues administration; educational services, including computer assisted ESL courses; health fairs; and other programs.

The Commissioners approved a \$224,482 budget for backstretch programs for 2003. Funding for these programs is from three sources: charity days at each race meet - \$16,418; a percentage of pari - mutuel handle - \$93,137; and revenues from Commission levied fines - \$71,545. A total of \$181,100 was deposited into the fund in 2003.



SPECIAL FUNDS

Casino Simulcasting Fund

Statutorily created to financially assist racetracks and horsemen’s organizations following the 1992 introduction of casino simulcasting. The Commission distributed year 2002 funds of \$1,943,673.25 as follows: \$151,862.21 to Atlantic City Racecourse; \$412,362.23 to Freehold Raceway; \$412,362.23 to Meadowlands Racetrack; \$412,362.23 to Monmouth Park; \$277,362.17 to S.B.O.A.; \$133,919.09 to T.B.A.; \$143,443.09 to T.H.A.

Local Expense Fund

Statutorily created to assist qualified municipalities to offset increased expenses from the operation of racetracks in their areas. Funds generated in 2003 were \$17,976.

Charity days

Proceeds from wagers designated by law to assist certain causes totaled \$130,162 and were allocated as follows: Developmentally Disabled - \$90,206; Horse Park of New Jersey/Care of Retired Horses - \$20,152; and Backstretch Improvement - \$19,804.

Compulsive gambling treatment

A total of \$200,000 was paid by racetracks to fund treatment and educational programs for compulsive gamblers as required by off-track and account wagering legislation enacted in 2002.

NEW JERSEY HORSE RACING INJURY COMPENSATION BOARD

The Commission spearheaded creation of this Board that provides low cost group workmen’s compensation insurance for the horse race industry. The Board consists of representatives of the public and private sector including members of horse race organizations, insurance providers, state insurance departments and the NJRC. The program covers employees of owners,

namely drivers and jockeys. Premiums have continually decreased over the years with 2003 premiums established at \$425,896.

THOROUGHBRED ORGANIZATIONS

Thoroughbred Horsemen's Association of NJ

A not-for-profit corporation is an advocate for thoroughbred racing in the State. It provides general administrative services to its members including a group health benefits program.

Thoroughbred Breeders Association of NJ

Is an organization devoted to promoting and enhancing the breeding of New Jersey thoroughbreds. The NJRC administers the Breeders Award Program that provides monetary incentives to owners and breeders by offering purse enhancements for races for New Jersey bred. The TBA initiated a horse racing rule amendment this year that would include New Jersey *sired* horses in their program.

STANDARD BRED ORGANIZATIONS

Standardbred Breeders and Owners Association of NJ

Is a not - for - profit organization dedicated to advancing the cause of standardbred racing in the State. It provides general administrative services to its members including a group health benefits program.

NJ Sires Stakes

An agency within the State Department of Agriculture, promotes the owning and breeding of New Jersey standardbreds. Nearly \$11 million in purse money is devoted to Sires Stake races restricted to horses sired by stallions resident in New Jersey. The program is funded by distributions from pari-mutuel handle at harness tracks and from nominating and sustaining payments by horse owners.

APPROVED 2003 RACING DATES

<u>Thoroughbred</u>	<u>Dates</u>
<i>Atlantic City Racecourse</i>	10
April 23, 30, May 1, 2 Sept. 21, 24-28 (at Monmouth Park)	
<i>Monmouth Park</i>	86
May 24 through September 20 No racing: Mon., Tues. (except May 26 and Sept. 1), May 28 , Sept. 3	
<i>Meadowlands</i>	28
October 2 through November 8 No racing: Sundays and Mondays	
Total Thoroughbred	<u>124</u>
<u>Standardbred</u>	
<i>Freehold Raceway, Spring</i>	94
January 1 through May 24 No racing: Sun., Mon. in Jan., Feb., Apr., (except 1/20, 2/17,) 1/21,22, 2/18,19, 4/1 Sun., Mon., Tues. in March and May	
<i>Freehold Raceway, Fall</i>	98
August 7 through December 31 No racing: Sun., Mon., in Aug., Sept., Oct., Nov. (except 9/1, 10/13), 9/2, 10/14, 11/27, Sun., Mon., Tues. in Dec. (except 12/30), 12/25	
<i>Meadowlands</i>	170
January 2 through August 2 November 14 through December 30 No racing: Sun., Mon., in Jan., and June, Mon., Tues. in Feb., Mar., Apr., May, (except 5/26), 4/20, 5/25, Sun., Mon., Tues. in July, Nov., Dec., 11/27, 12/24, 12/25.	
Total Standardbred	<u>62</u>
GRAND TOTAL	<u>486</u>

RACETRACKS & SIMULCASTING

New Jersey Racing Commission

Four venues conduct horse race meets in New Jersey - Atlantic City Racecourse, Freehold Raceway, Meadowlands Racetrack and Monmouth Park.

Atlantic City Racecourse

offered thoroughbred racing for 10 days in 2003. Four racing dates were run on its highly regarded grass course, including races dedicated to steeplechase events, and six days were raced at Monmouth Park.

\$335,350 Total wagers on AC races
 \$30,802,066 Total wagers on out of state races

Freehold Raceway

conducts daytime standardbred racing at its ½ mile track. It holds a spring and fall meet and offers wagering on out of state races year round.

\$61,195,997 Total wagers on Freehold, Spring
\$63,218,210 Total wagers on Freehold, Fall
 \$124,414,207 Total wagers in 2003

\$123,789,401 Total wagers on out of state races

Meadowlands

conducts both standardbred and thoroughbred racing and simulcasts year round.

Standardbred

\$493,154,931 Total wagers in 2003

Thoroughbred

\$48,647,484 Total wagers in 2003

Simulcasting

\$377,510,800 Total wagers on out of state races

Monmouth Park

offers thoroughbred racing from May through September and simulcasts year round.

\$280,543,605 Total wagers on Monmouth races
 \$138,999,781 Total wagers on out of state races

Wagering at Casinos

Wagering on horse racing also occurs at Atlantic City casinos. Nine “race books” accept wagers on races run in New Jersey and out of state. All bets are co-mingled with the host racetrack, via the Meadowlands hub, producing uniform pay-outs.

The amount wagered during the year at these facilities totaled \$116,538,690. This represents a 3.8% decline from last year’s total of \$121,185,555. By law, a portion of the commissions generated by these wagers is earmarked for deposit into the Casino Simulcast Fund for distribution to racetracks and industry-specific funds.

Pari-mutuel activity generated in 2003 at the casinos range from \$5,571,057 at the Sands to \$31,911,255 at Bally’s Park Place.

WAGERS ON NJ RACES 2002-2003		
T-BRED	<u>2002</u>	<u>2003</u>
A/C	\$ 170,686	\$ 335,350
Meadowlands	101,080,638	48,647,484
Monmouth Park	266,441,189	280,543,605
S-BRED		
Freehold	120,585,596	124,414,207
Meadowlands	<u>496,837,725</u>	<u>493,154,931</u>
TOTAL	\$985,145,834	\$947,095,577

2004 PLANS & INCENTIVES

New Jersey Racing Commission

The New Jersey Racing Commission will continue its vigorous oversight of horse racing matters to ensure that racing is conducted in a fair and responsible manner. Staff will provide the administrative support to encourage its growth through expansion of wagering opportunities. The following is a list of incentives planned for 2004:

1. Adopt unified national medication standards as initiated by Association of Racing Commissioners International.
2. Develop and implement new testing procedures and parameters for detecting the illegal use of EPO (Erythropoietin).
3. Monitor the use of shock wave therapy.
4. Expand licensing criteria and increase the investigatory efforts at Off-track Stabling Facilities.
5. Adopt upgraded and unified national pari-mutuel standards.
6. Effectuate procedures to reduce administrative requirements of the Lasix program.
7. Expedite the review process for consideration for approval of Off-track Wagering Facilities.
8. Provide efficient administrative review of the application for an account wagering system.
9. Implement the regulation of off-track wagering and account wagering in this State.
10. Cooperate with the State Legislature and racing industry interest groups to implement innovative measures geared toward increasing racing revenues and purse levels.
11. Pursue the passage of legislation that will permit New Jersey to become a member of the National Compact Licensing program.

APPROVED 2004 RACING DATES

<u>Thoroughbred</u>	<u>Dates</u>
<i>Atlantic City Racecourse</i>	4
May 5,12,13,19	
<i>Monmouth Park</i>	72
May 29-Sept. 5	
No racing June 2,3; Mondays and Tuesdays except May 31, July 5	
<i>Meadowlands</i>	69
Sept. 6-Dec. 11	
No Racing Sun.-Mon.,9/7 and 11/25	
TOTAL THOROUGHBRED	<u>145</u>
<u>Standardbred</u>	<u>Dates</u>
<i>Freehold Raceway, Spring</i>	99
Jan. 1 - May 29	
No racing: Sun.- Mon., Jan.-Mar. (Except 1/19, 2/16); 1/20,2/17,3/30; Sun.-Tues., April-May	
<i>Freehold Raceway, Fall</i>	93
Aug. 11-Dec. 31	
No racing: Sun.-Mon., Aug.-Oct. (Except 9/6, 10/11), 9/7, 10/12; Sun.-Tues., Nov.-Dec. (Except 12/27, 12/28); 11/25, 12/24, 12/25	
<i>Meadowlands</i>	151
Jan. 1-Aug.7	
No racing: Sun.-Mon. in Jan., June Mon.-Tues., Feb.-May, 4/11,5/30, 6/1 (Except 5/31)	
Sun.-Tues., July-Aug.	
TOTAL STANDARDTBRED	<u>343</u>
GRAND TOTAL	<u>488</u>

New Jersey Live And Simulcasting Meets Gross Handle Summary 2003

Thru 12/31/03															
NJ - TRACK	R A C I N G PERIOD	DAYS	GROSS HANDLE	OUT-OF-STATE GENERATED	N J HANDLE	ON-TRACK LIVE	TO N J TRACKS	TO A C	TO A C H I	TO F R A	TO G S P	TO M D L S	TO M P	ON-TRACK ATTENDANCE	
T-BRED TRACK															
A C R A	4/23 - 5/02	4	335,350	0	335,350	335,350	0	0	0	0	0	0	0	4,396	
M D L S	10/2 - 11/08	28	48,647,484	35,217,750	13,429,734	11,407,492	2,022,242	182,651	0	755,899	0	0	1,083,692	117,084	
M P	5/24 - 9/28	92	280,543,605	205,810,764	74,732,841	61,537,634	13,195,207	1,187,366	0	0	0	12,007,841	0	716,129	
SUB-TOTAL (T)			\$329,526,439	\$241,028,514	\$88,497,925	\$73,280,476	\$15,217,449	\$1,370,017	\$0	\$755,899	\$0	\$12,007,841	\$1,083,692	837,609	
HARNES TRACK															
A C H I	1/1 - 5/24	92	61,195,997	37,922,149	23,273,848	14,548,527	8,725,321	298,934	0	0	0	7,204,307	1,222,080	138,936	
F R A	8/07 - 12/31	96	63,218,210	40,589,358	22,628,852	14,211,413	8,417,439	297,439	0	0	0	6,816,046	1,303,954	166,023	
M D L S	1/2-8/2 & 11/14-12/31	165	493,154,931	356,486,550	136,668,381	116,381,807	20,286,574	1,013,848	9,093,582	5,494,317	0	0	4,684,827	753,400	
SUB-TOTAL (H)			\$617,569,138	\$434,998,057	\$182,571,081	\$145,141,747	\$37,429,334	\$1,610,221	\$9,093,582	\$5,494,317	\$0	\$14,020,353	\$7,210,861	1,058,359	
TOTAL LIVE-03			\$947,095,577	\$676,026,571	\$271,069,006	\$218,422,223	\$52,646,783	\$2,980,238	\$9,093,582	\$6,250,216	\$0	\$26,028,194	\$8,294,553	1,895,968	
OUT-OF-STATE SIGNAL RECEIVED															
A C H I (H) L	1/1 - 5/25	2,680	51,519,485	0	51,519,485										
A C R A (T)	1/1 - 4/22	1,832	9,661,442	0	9,661,442										
A C R A (T) L	4/23 - 5/02	546	3,020,774	0	3,020,774										
A C R A (T)	5/03 - 12/31	3,677	18,119,850	0	18,119,850										
ACRA TOTAL			6,055	30,302,066	0	30,302,066									
F R A (H)	5/26 - 8/06	1,471	20,606,671	0	20,606,671										
F R A (H) L	8/07 - 12/31	3,044	51,663,245	0	51,663,245										
FRA TOTAL			4,515	72,269,916	0	72,269,916									
M D L S (H) L	1/2 - 8/2	3,839	222,096,094	0	222,096,094										
M D L S (H)	11/24 - 12/31	1,047	60,296,132	0	60,296,132										
TOTAL (H)			4,886	282,392,226	0	282,392,226									
M D L S (T)	8/9 - 9/10	605	29,740,882	0	29,740,882										
M D L S (T) L	10/02 - 11/08	1,289	65,377,692	0	65,377,692										
TOTAL (T)			1,894	95,118,574	0	95,118,574									
MDL TOTAL			11,666	377,510,800	0	377,510,800									
M P (T)	1/1 - 5/23	1,891	38,806,397	0	38,806,397										
M P (T) L	5/24 - 9/28	2,629	73,080,010	0	73,080,010										
M P (T)	9/29 - 12/31	1,371	27,113,374	0	27,113,374										
MP TOTAL			5,891	138,999,781	0	138,999,781									
TOTAL SIGNAL REC'D			25,921	\$671,102,048	\$0	\$671,102,048	\$0	\$0	\$0	\$0	\$0	\$0	\$0	0	
TOTAL 2003			26,398	\$1,618,197,625	\$676,026,571	\$942,171,054	\$218,422,223	\$52,646,783	\$2,980,238	\$9,093,582	\$6,250,216	\$0	\$26,028,194	\$8,294,553	1,895,968

L = Generated during the period of Live Racing

FIGURES THRU: 12/31/03

On-Track Handle and Attendance 2003

Meets	Racing Dates	Handle	Average Daily Handle	Attendance	Average Daily Attendance
THOROUGHBRED					
Atlantic City Racing Assoc.	4	\$335,350	\$83,838	4,396	1,099
Garden State Park	0	0	0	0	0
Meadowlands	28	11,407,492	407,410	117,084	4,182
Monmouth Park Jockey Club	92	61,537,634	668,887	716,129	7,784
THOROUGHBRED TOTALS	124	\$73,280,476		837,609	
HARNESS					
Atlantic City Harness, Inc.	92	\$14,548,527	\$158,136	138,936	1,510
Freehold Raceway	96	14,211,413	148,036	166,023	1,729
Garden State Park	0	0	0	0	0
Meadowlands	165	116,381,807	705,344	753,400	4,566
HARNESS TOTALS	353	\$145,141,747		1,058,359	
Total On-track	477	\$218,422,223			
Total NJ Track Simulcasting		\$52,646,783			
Gross New Jersey Track Handle		\$271,069,006			
			Total On-Track Attendance	1,895,968	

NOTE: FIGURES THRU 12/31

Inter-State Wagering 2003

Meet	Racing Dates	Handle
THOROUGHBRED		
Monmouth Park Jockey Club	92	\$138,999,781
Atlantic City Racing Assoc.	4	30,802,066
Meadowlands	22	95,118,575
Garden State Park	0	0
Sub-Total Thoroughbred Tracks	118	\$264,920,422
HARNESS		
Atlantic City Harness, Inc.	92	51,519,485
Freehold Raceway	62	72,269,916
Garden State Park	0	0
Meadowlands	145	282,392,226
Sub-Total Harness Tracks	299	\$406,181,627
Total Inter-State Wagering	417	\$671,102,049

NOTE: Interstate wager is Gross Handle, from All-sources, less NJ Handle (OOSH)

Five Year Comparison New Jersey Thoroughbred Tracks

	1999 - 5 NIGHTS	2000 - 6 NIGHTS	2001 - 10 NIGHTS	2002 - 1 NIGHTS	2003 - 4 NIGHTS
ATLANTIC CITY RACING ASSOCIATION					
<i>Total Mutuel Handle</i>	\$1,045,295	\$1,829,572	\$2,126,843	\$170,686	\$335,350
<i>Daily Average Mutuel Handle</i>	\$209,059	\$304,929	\$212,684	\$170,686	\$83,838
<i>Total Attendance</i>	8,415	12,859	18,929	1,925	4,396
<i>Daily Average Attendance</i>	1,683	2,143	1,893	1,925	1,099
MONMOUTH PARK JOCKEY CLUB	1999 - 72 DAYS	2000 - 73 DAYS	2001 - 72 DAYS	2002 - 78 DAYS	2003 - 92 DAYS
<i>Total Mutuel Handle</i>	\$87,141,532	\$80,571,504	\$83,165,942	\$74,743,527	\$74,732,841
<i>Daily Average Mutuel Handle</i>	\$1,210,299	\$1,103,719	\$1,155,083	\$958,250	\$812,313
<i>Total Attendance</i>	709,908	726,479	772,755	766,016	716,129
<i>Daily Average Attendance</i>	9,860	9,952	10,733	9,821	7,784
NJ SPORTS & EXPOSITION AUTHORITY	1999 - 51 NIGHTS	2000 - 54 NIGHTS	2001 - 44 NIGHTS	2002 - 42 NIGHTS	2003 - 28 NIGHTS
<i>Total Mutuel Handle</i>	\$36,393,821	\$35,155,851	\$31,407,755	\$23,285,869	\$13,429,734
<i>Daily Average Mutuel Handle</i>	\$713,604	\$651,034	\$713,813	\$554,425	\$479,633
<i>Total Attendance</i>	266,870	260,199	214,970	187,300	117,084
<i>Daily Average Attendance</i>	5,233	4,819	4,886	4,460	4,182
GARDEN STATE PARK	1999 - 38 NIGHTS	2000 - 31 NIGHTS	2001 - 15 NIGHTS	2002 - 0 NIGHTS	2003 - 0 NIGHTS
<i>Total Mutuel Handle</i>	\$11,630,289	\$7,075,707	\$2,574,497	\$0	\$0
<i>Daily Average Mutuel Handle</i>	\$306,060	\$228,249	\$171,633	\$0	\$0
<i>Total Attendance</i>	78,295	60,594	20,395	0	0
<i>Daily Average Attendance</i>	2,060	1,955	1,360	0	0

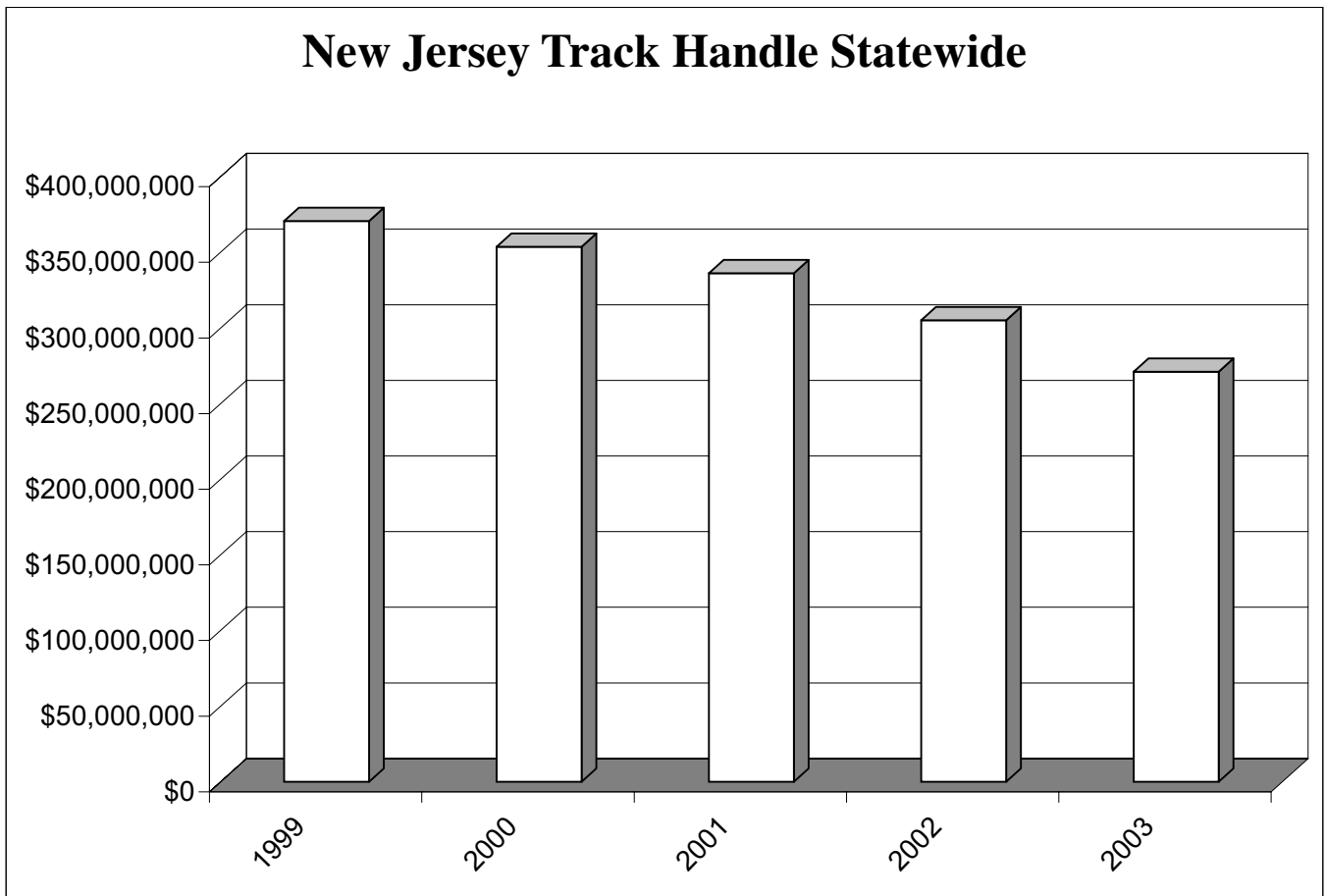
Five Year Comparison New Jersey Harness Tracks

	1999 - 90 DAYS	2000 - 94 DAYS	2001 - 91 DAYS	2002 - 60 DAYS	2003 - 96 DAYS
FREEHOLD RACING ASSOCIATION					
<i>Total Mutuel Handle</i>	\$29,776,224	\$27,250,927	\$25,899,775	\$16,699,567	\$22,628,852
<i>Daily Average Mutuel Handle</i>	\$330,847	\$289,903	\$284,613	\$278,326	\$235,717
<i>Total Attendance</i>	181,002	146,277	148,599	92,253	166,023
<i>Daily Average Attendance</i>	2,011	1,556	1,633	1,538	1,729
ATLANTIC CITY HARNESS, INC.	1999 - 101 DAYS	2000 - 98 DAYS	2001 - 98 DAYS	2002 - 98 DAYS	2003 - 92 DAYS
<i>Total Mutuel Handle</i>	\$31,541,130	\$29,480,627	\$28,562,113	\$26,052,433	\$23,273,848
<i>Daily Average Mutuel Handle</i>	\$312,288	\$300,823	\$291,450	\$265,841	\$252,977
<i>Total Attendance</i>	201,301	165,148	148,942	139,805	138,936
<i>Daily Average Attendance</i>	1,993	1,685	1,520	1,427	1,510
NJ SPORTS & EXPOSITION AUTHORITY	1999 - 145 NIGHTS	2000 - 152 NIGHTS	2001 - 170 NIGHTS	2002 - 150 NIGHTS	2003 - 165 NIGHTS
<i>Total Mutuel Handle</i>	\$155,198,590	\$157,560,381	\$162,484,321	\$134,276,942	\$136,668,381
<i>Daily Average Mutuel Handle</i>	\$1,070,335	\$1,036,581	\$955,790	\$895,180	\$828,293
<i>Total Attendance</i>	821,652	826,410	859,859	741,474	753,400
<i>Daily Average Attendance</i>	5,667	5,437	5,058	4,943	4,566
GARDEN STATE PARK	1999 - 51 NIGHTS	2000 - 54 NIGHTS	2001 - 0 NIGHTS	2002 - 0 NIGHTS	2003 - 0 NIGHTS
<i>Total Mutuel Handle</i>	\$17,930,004	\$14,755,901	\$0	\$0	\$0
<i>Daily Average Mutuel Handle</i>	\$351,569	\$273,257	\$0	\$0	\$0
<i>Total Attendance</i>	95,124	57,200	0	0	0
<i>Daily Average Attendance</i>	1,865	1,059	0	0	0
TOTALS USED IN CHARTS====>					
NEW JERSEY TRACK HANDLE	\$370,656,885	\$353,680,470	\$336,221,246	\$275,229,024	\$271,069,006
ON TRACK ATTENDANCE	2,362,567	2,255,166	2,184,449	1,928,773	1,895,968

NOTE: 2003 figures through 12-31-03

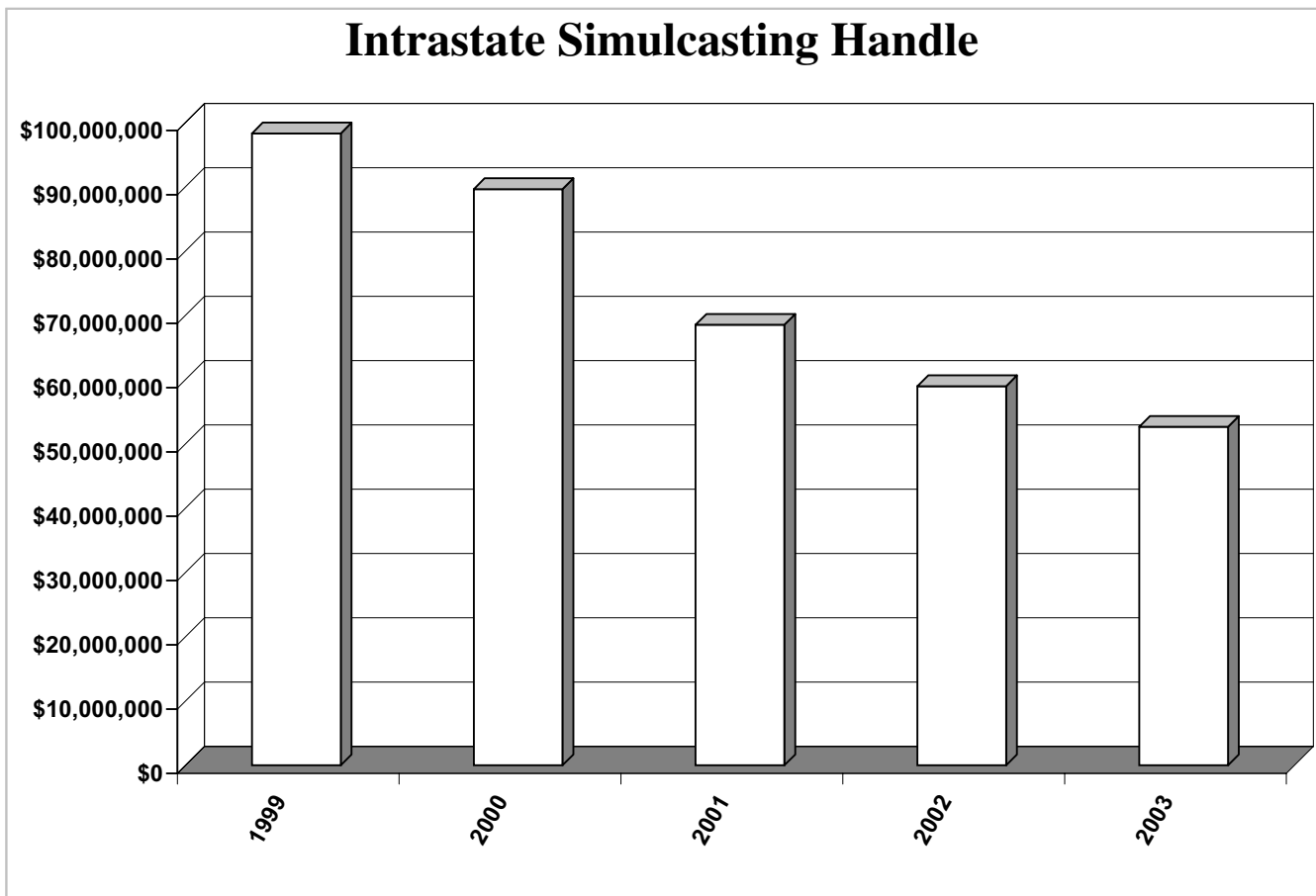
New Jersey Track Handle Statewide

	1999	2000	2001	2002	2003
Atlantic City Harness	\$31,541,130	\$29,480,627	\$28,562,113	\$25,972,464	\$23,273,848
Atlantic City Racecourse	1,045,295	1,829,572	2,126,843	170,686	335,350
Freehold Raceway	29,776,224	27,250,927	25,899,775	25,038,456	22,628,852
Garden State Park	29,560,293	21,831,608	2,574,497	0	0
Meadowlands Racetrack	191,592,411	192,716,232	193,892,076	179,210,982	150,098,115
Monmouth Park	87,141,532	80,571,504	83,165,942	74,743,527	74,732,841
TOTAL	\$370,656,885	\$353,680,470	\$336,221,246	\$305,136,115	\$271,069,006



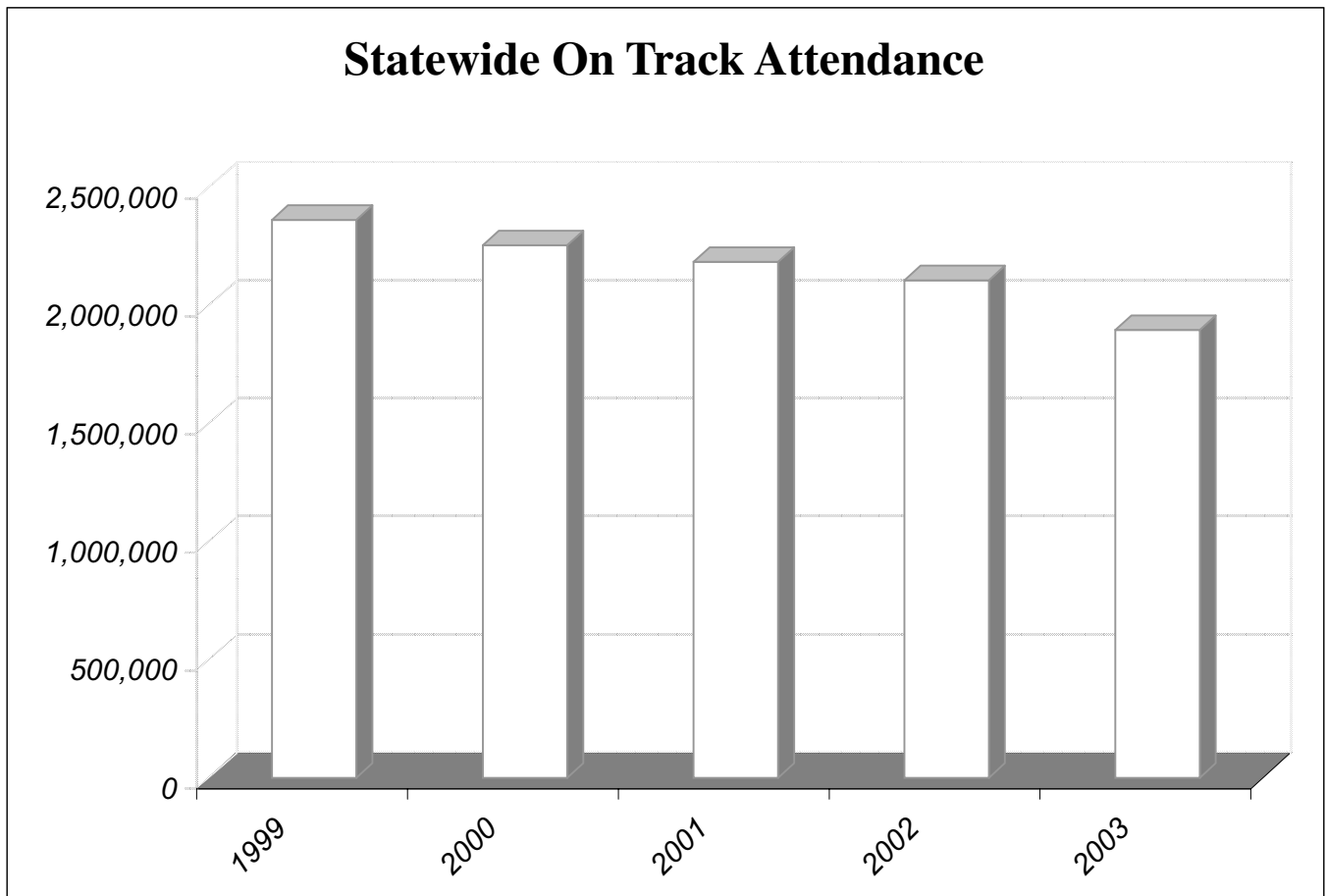
Intrastate Simulcasting Handle

	1999	2000	2001	2002	2003
Atlantic City Harness	\$13,257,392	\$11,920,382	\$11,489,127	\$9,804,866	\$9,093,582
Atlantic City Racecourse	519,430	966,564	1,134,603	3,301,190	2,980,238
Freehold Raceway	11,128,124	10,347,142	8,422,390	7,552,932	6,250,216
Garden State Park	19,843,426	15,458,786	1,389,591	0	0
Meadowlands Racetrack	35,212,066	34,817,227	30,700,840	27,896,743	26,028,194
Monmouth Park	18,311,681	16,111,569	15,376,891	10,406,732	8,294,553
TOTAL	\$98,272,119	\$89,621,670	\$68,513,442	\$58,962,463	\$52,646,783



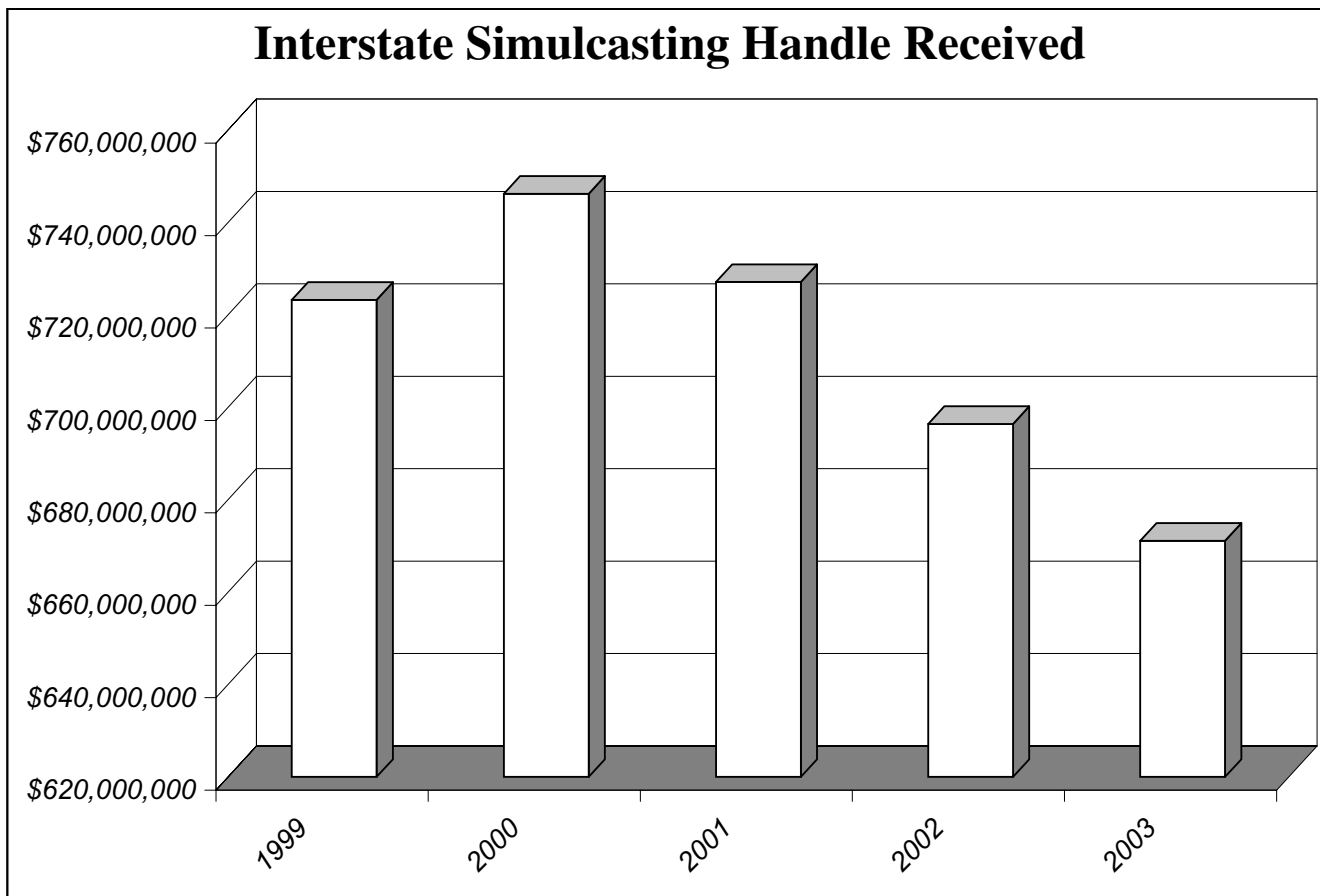
Statewide On Track Attendance

	1999	2000	2001	2002	2003
Atlantic City Harness	201,301	165,148	148,942	139,805	138,936
Atlantic City Racecourse	8,415	12,859	18,929	1,925	4,396
Freehold Raceway	181,002	146,277	148,599	118,718	166,023
Garden State Park	173,419	117,794	20,395	0	0
Meadowlands Racetrack	1,088,522	1,086,609	1,074,829	1,080,318	870,484
Monmouth Park	709,908	726,479	772,755	766,016	716,129
TOTAL	2,362,567	2,255,166	2,184,449	2,106,782	1,895,968



Interstate Simulcasting Handle Received

	1999	2000	2001	2002	2003
Atlantic City Harness	\$45,336,446	\$47,394,787	\$51,794,045	\$52,179,085	\$51,519,485
Atlantic City Racecourse	25,173,913	27,052,073	29,025,373	31,660,199	30,802,066
Freehold Raceway	60,379,462	65,014,849	72,164,363	74,922,720	72,269,916
Garden State Park	90,580,869	85,945,440	36,520,230	0	0
Meadowlands Racetrack	366,566,659	383,240,349	403,168,024	402,411,700	377,510,800
Monmouth Park	135,179,856	137,522,934	134,417,891	135,185,476	138,999,781
TOTAL	\$723,217,205	\$746,170,432	\$727,089,926	\$696,359,180	\$671,102,048



Summary of Commingle Handle by Track

1/1/03 thru 12/31/03

OUT-OF-STATE SIGNAL RECEIVED	ATLANTIC CITY RACING ASSOC.	FREEHOLD RACEWAY A C H I	MEADOWLANDS STANDARD BRED THOROUGHBRED	MONMOUTH PARK T-BRED	TOTAL RECEIPTS		
1 AQUEDUCT	1,807,713	5,519,587	3,026,115	21,018,561	1,481,361	10,688,028	43,541,365
2 ARLINGTON PARK	522,750	209,943	1,423,461	3,562,803	2,456,570	3,481,356	11,656,883
3 AUSTRALIAN RACE	24,623			2,693,515	593,496	358,348	3,669,982
4 BALMORAL	347,453	404,470	1,818,190	3,852,040	2,622,561	246,855	9,291,568
5 BATAVIA DOWNS	0		8,321				8,321
6 BAY MEADOWS	291,216	525,567	686,372	2,668,109	1,402,290	1,367,814	6,941,368
7 BELMONT	1,813,839	1,110,661	5,581,157	12,776,926	6,717,430	17,136,379	45,136,392
8 BREEDERS CUP FUTURE	2,492		7,930		25,748	14,789	50,959
9 BUELAH & RIVERDOWN	99,348	382,350	161,465	590,670	59,589	254,386	1,547,808
10 CAL-EXPO		29,960	83,044	2,542,775	271,817	57,894	2,985,490
11 CALDER	1,485,128	650,933	4,516,787	8,646,705	4,738,061	7,227,597	27,265,211
12 CANTERBURY			89,239	43,120		21,550	153,909
13 CHARLES TOWN	721,574	1,170,762	1,890,466	7,856,083	3,180,731	1,961,867	16,781,483
14 CHURCHILL	1,274,473	1,685,953	2,678,235	11,885,993	1,293,005	8,210,401	27,028,060
15 COLONIAL DOWNS	156,465		488,156	1,129,613	39,036	588,927	2,402,197
16 DELAWARE PK	1,535,258	600,404	2,949,181	5,404,096	4,602,112	5,909,152	21,000,203
17 DELMAR	343,303		925,156	965,650	3,279,731	2,180,987	7,694,827
18 DERBY FUTURE	7,595	15,351		42,725		17,122	82,793
19 DELTA DOWNS	8	259,042	275,204	1,860,274		163,756	2,558,284
20 DOVER DOWNS	347,574	1,476,630	790,092	3,679,284	185,131	373,692	6,852,403
21 DUBAI	9,649	18,497		60,730		27,493	116,369
22 DUQUIN			74,192			27,655	101,847
23 ELLIS PARK	269,313		829,337	1,527,937	1,852,268	1,790,104	6,268,959
24 EMERALD DOWNS		31,498	45,869	189,699	83,428	17,678	368,172
25 EVANGELINE	285,357	389,344	650,947	4,619,331	722,233	754,520	7,421,732
26 FAIRGROUND	568,613	1,443,075	449,332	6,204,646		2,789,675	11,455,341
27 FAIRMOUNT				464,949		177,524	848,814
28 FAIRPLEX	62,601		187,546		720,510	327,690	1,298,347
29 FINGER LAKES	266,623	205,847	936,523	1,714,397	1,179,482	979,453	5,282,325
30 FLAMBORO		562,446	770,771		13,239		1,346,456
31 FORT ERIE RACETRACK	5			545,051		393,761	1,256,313
32 FRASIER DOWNS		122,278	46,830				169,108
33 FRENCH RACING				3,987			3,987
34 GOLDEN GATE	351,146	883,206	523,562	4,951,884	145,225	1,703,617	8,558,640
35 GREAT LAKES	103,323			242,391	414,741	108,324	868,779
36 GULFSTREAM	1,422,540	4,673,292		14,382,243		7,040,283	27,518,358
37 HAMBOHASKELL	67		2,445		12,173	4,562	19,247
38 HARRINGTON	214,737	287,375	1,120,050	941,188	1,067,295	246,023	3,876,668
39 HAWTHORNE	521,187	984,407	1,630,649	6,500,419	1,412,248	2,256,651	13,305,561
40 HAZEL PARK	60,199	69,074	169,291	276,777	102,791		686,219
41 HOLLYWOOD	667,198	507,909	1,520,302	9,707,932		3,917,304	16,320,645
42 HOOSIER PARK	186,671	213,960	914,880	1,565,486	1,821,145	650,506	5,352,648
43 INDIA DOWNS		102,394	356,562	140,622	82,358	14,314	696,250
44 KAWARtha DOWNS				24,164			24,164
45 KEENELAND	346,891	656,904	545,777	2,207,929	1,570,148	1,885,314	7,212,963
46 KENTUCKY	13,568		45,161		120,997	49,123	228,849
47 LAUREL	1,041,624	1,745,932	1,624,048	6,377,044	1,635,825	4,345,921	16,770,394
48 LEBANON RACEWAY			83,652				83,652
49 LITTLE BROWN JUG	8,803		141,406		206,752		356,961
50 LONE STAR PARK	217,253	402,540	409,203	4,624,114		1,154,031	6,807,141
51 LOS ALAMITOS			451,284		68,803	3,934	524,021
52 LOUISIANA	332,486		1,141,382	1,105,129	2,232,913	1,848,217	6,660,127
53 MAYWOOD	173,127	300,816	1,055,610	2,656,365	1,859,673	100,393	6,145,984
54 MEADOWS	308,254	857,862	1,188,202	4,355,389	1,365,979	741,518	8,817,204
55 MOHAWK	161,864	361,613	727,363	2,529,514	2,539,066	328,930	6,648,350
56 MONTAINEER	865,040	868,818	2,005,819	8,188,764	3,703,440	1,264,699	16,896,550
57 MONT'LO RACEWAY	290,855	1,073,704	1,890,014	2,944,606	811,091	671,593	7,681,863
58 NORTHERN CALIF. FAIR	93,244			457,345	196,584	240,816	987,989
59 NORTHFIELD	502,517	1,616,177	1,736,793	7,162,874	2,428,179	479,410	13,925,950
60 NORTHVILLE		201,117	73,329				274,446
61 OAKLAWN	242,426	919,819		4,217,980		1,331,890	6,712,115
62 OAK TREE @ SANTA	81,134						81,134
63 OCEAN DOWNS			120,316	36,773	19,495		176,584
64 PENN NATIONAL	932,959	924,411	1,281,119	9,464,053	2,950,964	1,902,447	17,455,953
65 PHILA PARK	2,627,642	2,490,574	3,407,407	10,566,218	3,288,905	7,043,190	29,423,936
66 PIMLICO	600,077	1,239,810	599,715	4,431,312	913,478	2,889,743	10,674,135
67 PLAINRIDGE		203,042	753,439	1,492,687	638,609	245,336	3,333,113
68 POCONO	120,635	295,149	711,402	1,473,203	545,975	132,672	3,279,036
69 POMPANO	100,536	655,645	256,301	1,382,630	73,339	60,667	2,529,118
70 PORTLAND MEADOWS			539,747		30,371		599,492
71 PRAIRE MEADOWS		74,082	213,375	444,417	116,700	106,485	955,059
72 RED MILE	7	25,457	352,034	64,077	509,294	1,213	952,082
73 REMMINGTON				17,884		5,991	23,875
74 RETAMA PARK	113,053		438,075	63,317	2,353,885	452,005	3,420,335
75 RIDEAU CARLETON				174,905	62,237		237,142
76 RIVERDOWN	94,383	178,517	229,841	448,712	50,553	172,093	1,174,099
77 ROCKINGHAM		14,434	507,118	389,631	188,603	43,751	1,143,537
78 ROSECROFT	11,124	299,259	384,411	581,783	159,196	97,950	1,533,723
79 SAM HOUSTON	324,336	1,117,796	463,897	6,722,662	811,194	1,071,407	10,511,292
80 SANTA ANITA	974,792	2,172,159	1,229,953	10,830,578	4,374,310	6,093,194	25,674,986
81 SARATOGA	992,275		2,699,932	2,546,008	6,313,396	9,235,563	21,787,174
82 SCIOTO DOWNS	32,353	30,608	200,892	446,792	185,228	14,135	910,008
83 SOUTH AFRICAN RACE				70,181	66,691		136,872
84 SUFFOLK DOWNS	543,880	1,079,595	1,097,055	3,351,328	1,093,294	1,568,442	8,733,594
85 SUNLAND PARK		185,743	85,594	807,056		219,441	1,297,834
86 TAMPA BAY	821,923	2,709,507	381,045	7,711,739		2,869,107	14,493,321
87 THISTLEDOWN	505,977	458,804	1,949,457	3,102,932	1,422,719	1,935,920	9,375,809
88 TIMINIUM	30,070		76,414				106,484
89 TURF PARADISE	361,665	820,664	656,110	2,282,836	463,105	634,071	5,218,451
90 TURFWAY	371,835	775,066	620,855	4,222,448	1,163,298	1,607,058	8,760,560
91 WINDSOR		196,493	263,030	935,227	160,856	14,539	1,570,145
92 WOODBINE	575,583	720,203	970,967	9,678,304	3,180,806	2,342,144	17,468,007
93 YAVAPAI	35,617		129,302				164,919
94 YONKERS	182,217	1,310,950	1,895,442	5,551,674	2,037,062	373,580	11,350,925
TOTAL thru 12/31	\$30,802,066	\$51,519,485	\$72,269,916	\$282,392,226	\$95,118,575	\$138,999,781	671,102,048

New Jersey Live & Simulcasting Meets Commission Distribution Summary 2003

NJ-TRACK	RACE DAY	NJ-GROSS HANDLE	TOTAL COMMISSION	TRACK SHARE	PURSE SHARE	STATE SETTLE	CHARITY	SIRE STAKES (HARNESS)	BREED/DEVL (HARNESS)	BREED/STALL (HARNESS)	BREED/DEVL (T-BRED)	T. B. A. (T-BRED)	BACKSTRETCH BENEVOLENCE	S.B.O.A. BENEFIT	POSITIVE BREAKAGE	HEADTAX	PAY TO PATRON	WORKERS COMP	
T-BRED TRACK																			
A C R A	4	\$335,350	\$64,323	\$36,441	\$23,081	\$0	\$5,377	\$0	\$0	\$0	\$168	\$2,998	\$0	\$0	\$1,883	\$0	\$271,027	\$0	
M D L S	28	13,429,734	2,640,671	1,876,201	706,669	0	15,725	0	0	0	6,715	34,333	1,028	0	75,038	0	10,714,025	31,560	
M P	92	74,732,841	14,628,524	10,503,918	3,855,000	0	45,330	0	0	0	37,366	176,678	6,492	0	432,827	15,474	59,671,489	175,622	
SUB-TOTAL (T)	124	\$88,497,925	\$17,333,519	\$12,416,560	\$4,584,749	\$0	\$66,431	\$0	\$0	\$0	\$44,249	\$214,009	\$7,520	\$0	\$509,748	\$15,474	\$70,656,541	\$207,182	
HARNESS TRACK																			
A C H I	92	\$23,273,848	\$4,837,610	\$2,281,796	\$2,344,598	\$0	\$11,728	\$151,393	\$8,029	\$13,382	\$0	\$0	\$2,093	\$24,591	\$131,081	\$1,234	\$18,567,318	\$54,971	
F R A	96	22,628,852	4,698,556	2,216,563	2,277,376	0	10,346	147,239	7,807	13,012	0	0	2,056	24,158	123,742	1,414	18,054,038	58,334	
M D L S	165	136,668,381	27,388,772	17,652,018	8,719,927	0	41,657	695,342	41,000	75,168	0	0	12,834	150,796	638,503	0	108,641,105	250,391	
SUB-TOTAL (H)	353	\$182,571,081	\$36,924,939	\$22,150,376	\$13,341,902	\$0	\$63,731	\$993,975	\$56,837	\$101,562	\$0	\$0	\$16,983	\$199,544	\$893,326	\$2,648	\$145,262,462	\$363,695	
TOTAL LIVE-2002	477	\$271,069,006	\$54,258,457	\$34,566,936	\$17,926,651	\$0	\$130,162	\$993,975	\$56,837	\$101,562	\$44,249	\$214,009	\$24,503	\$199,544	\$1,403,075	\$18,122	\$215,919,003	\$570,877	
OUT-OF-STATE HANDLE RECEIVED																			
A C R A (T)	6,055	30,802,066	6,159,152	4,795,810	1,190,850	1,241	0	0	0	0	9,241	160,171	3,081	0	166,041	0	24,476,872	\$72,385	
M D L S (T)	1,894	95,116,575	19,354,676	12,840,428	5,981,583	4,035	0	0	0	0	28,536	494,617	9,512	0	452,144	0	75,311,756	223,529	
M P (T)	5,891	138,999,781	27,422,001	18,734,903	7,908,698	12,644	0	0	0	0	41,700	722,799	13,901	0	676,195	0	110,899,585	326,649	
SUB-TOT (T)	13,840	264,920,422	52,935,829	36,371,141	15,081,130	17,919	0	0	0	0	79,477	1,377,586	26,493	0	1,296,380	0	210,688,213	622,563	
A C H I (H)	2,680	51,519,485	10,768,853	7,702,197	2,815,869	2,310	0	156,364	15,456	13,279	0	0	5,152	60,535	240,113	0	40,990,745	0	
F R A (H)	4,515	72,269,916	15,076,832	11,002,122	3,722,915	7,919	0	219,343	21,681	18,628	0	0	7,227	84,917	321,212	0	57,514,296	0	
M D L S (H)	4,886	282,392,226	57,421,174	38,185,015	17,941,590	9,044	0	769,739	84,718	80,061	0	0	28,240	331,811	1,433,927	0	223,537,125	0	
SUB-TOT (H)	12,081	406,181,627	83,266,859	56,889,334	24,480,374	19,272	0	1,145,446	121,855	111,967	0	0	40,619	477,264	1,995,252	0	322,042,166	0	
TOTAL SIGNAL	25,921	\$671,102,049	\$136,202,688	\$93,260,475	\$39,561,504	\$37,191	\$0	\$1,145,446	\$121,855	\$111,967	\$79,477	\$1,377,586	\$67,112	\$477,264	\$3,291,632	\$0	\$532,730,379	\$622,563	
TOTAL - 2003	26,398	\$942,171,055	\$190,461,145	\$127,827,412	\$57,488,155	\$37,191	\$130,162	\$2,139,421	\$178,692	\$213,529	\$123,726	\$1,591,595	\$91,615	\$676,808	\$4,694,707	\$18,122	\$748,649,382	\$1,193,440	

Figures thru: DECEMBER 31

2003 Charity Days Revenue

TRACK / DATE	BACKSTRECH BENEVOLENCE	DEVEPMENTALLY DISABLED	HORSE PARK OF NEW JERSEY	T O T A L CHARITY
<i>A.C. Harness, Inc.</i>				
15-Mar-03			2,399.97	2,399.97
05-Apr-03		1,915.65		1,915.65
03-May-03	2,695.63			2,695.63
17-May-03		2,631.77		2,631.77
24-May-03		2,085.17		2,085.17
SUB-TOTAL	\$2,695.63	\$6,632.59	\$2,399.97	\$11,728.19
<i>Atlantic City Racing</i>				
23-Apr-03	146.76			146.76
30-Apr-03			431.77	431.77
01-May-03		471.80		471.80
02-May-03		585.64		585.64
27-Sep-03		3,740.57		3,740.57
SUB-TOTAL	\$146.76	\$4,798.01	\$431.77	\$5,376.54
<i>Freehold Raceway</i>				
09-Aug-03	1,911.85			1,911.85
23-Aug-03			2,188.39	2,188.39
01-Sep-03		2,478.24		2,478.24
20-Sep-03		1,998.11		1,998.11
18-Oct-03		1,768.99		1,768.99
SUB-TOTAL	\$1,911.85	\$6,245.34	\$2,188.39	\$10,345.58
<i>Meadowlands (H)</i>				
08-Mar-03	7,148.08			7,148.08
05-Apr-03			5,905.82	5,905.82
03-May-03		7,086.78		7,086.78
26-May-03		4,005.44		4,005.44
02-Aug-03		17,510.93		17,510.93
SUB-TOTAL	\$7,148.08	\$28,603.15	\$5,905.82	\$41,657.05
<i>Meadowlands (T)</i>				
04-Oct-03	3,238.61			3,238.61
11-Oct-03			3,218.35	3,218.35
18-Oct-03		2,796.04		2,796.04
25-Oct-03		2,583.01		2,583.01
08-Nov-03		3,889.16		3,889.16
SUB-TOTAL	\$3,238.61	\$9,268.21	\$3,218.35	\$15,725.17
<i>Monmouth Park</i>				
26-May-03	4,662.51			4,662.51
04-Jul-03			6,008.09	6,008.09
20-Jul-03		6,230.58		6,230.58
03-Aug-03		21,803.28		21,803.28
31-Aug-03		6,625.06		6,625.06
SUB-TOTAL	\$4,662.51	\$34,658.92	\$6,008.09	\$45,329.52
CHARITY	\$19,803.44	\$90,206.22	\$20,152.39	\$130,162.05

Summary of Pari-Mutuel Activity Atlantic City Casinos 1/1/03 through 12/31/03

Host Track	Showboat	Trump Taj Mahal	Resorts	Sands	Caesar's	Bally's Park Place	Trump Marina	Tropicana	Borgata	Hub Total
New Jersey Signals Received										
Atlantic City Harness, Inc.	\$121,394	\$126,902	\$95,083	\$56,558	\$168,344	\$317,635	\$81,866	\$142,462		\$1,110,244
Freehold	127,747	123,730	101,748	51,265	162,644	302,212	56,399	128,714	173,320	1,227,779
Meadowlands - Harness	468,352	749,777	377,982	228,670	1,022,335	1,551,853	423,215	687,600	239,187	5,748,971
Meadowlands - Thoroughbred	46,100	64,111	39,726	31,673	84,268	161,478	32,807	77,204	137,407	674,774
Monmouth Park - Thoroughbred	197,398	331,454	184,768	170,134	479,342	906,020	239,722	477,612	524,559	3,511,009
Total N.J. Signals Received	\$960,991	\$1,395,974	\$799,307	\$538,300	\$1,916,933	\$3,239,198	\$834,009	\$1,513,592	\$1,074,473	\$12,272,777
Out-of-State Signals Received										
Aqueduct	\$433,352	\$1,046,398	\$446,162	\$385,903	\$1,247,710	\$1,940,440	\$440,174	\$919,575	\$415,560	\$7,275,274
Arlington	78,541	194,067	98,638	83,391	292,500	475,609	111,650	364,225	206,525	1,905,146
Balmoral	0	220,381	104,643	81,149	221,929	415,491	60,831	178,999	202,457	1,485,882
Bay Meadows	65,154	161,698	84,749	67,448	201,402	319,236	63,090	179,774	96,583	1,239,134
Belmont Park	446,325	978,974	403,290	361,933	1,257,631	1,952,927	519,480	1,062,165	740,616	7,723,341
Breeders Cup Future	246	0	78	0	474	573	85	10	397	1,863
Breeders' Cup Head2Head-Calif	115	296	0	0	930	855	786	265	405	3,652
Buelah & Riverdowns	522	52,585	26,250	22,343	72,987	119,876	26,054	68,399	18,579	407,595
Cal-Expo	0	25,612	58,359	7,752	0	252,846	0	124,600	54,975	524,144
Calder	233,287	456,597	227,119	220,096	700,398	1,114,869	216,771	693,528	541,205	4,403,870
Canterbury Park	0	404	848	1,147	2,278	2,921	325	1,690	1,302	10,915
Charletown	209,013	311,970	198,886	110,229	469,060	894,878	170,746	387,770	273,048	3,025,600
Churchill Downs	197,388	383,907	220,291	204,112	659,039	1,097,654	293,481	619,575	296,711	3,972,158
Colonial Downs	27,078	48,449	27,175	19,827	69,354	119,363	28,407	77,550	47,717	464,920
Delaware Park	226,793	393,744	232,404	187,012	504,918	938,192	204,744	590,765	389,109	3,667,681
Del Mar	71,620	210,030	69,241	57,843	191,610	362,373	58,929	177,900	268,294	1,467,840
Delta Downs	0	70,135	35,410	21,014	98,606	155,467	30,929	67,970	47,156	526,687
Derby Future Wager	171	880	36	452	209	604	24	478	0	2,854
Dover Downs	89,837	192,479	100,743	63,768	213,079	402,866	61,101	160,675	58,188	1,342,736
Ellis Park	34,501	80,621	50,971	54,498	123,568	233,680	40,111	146,371	197,980	962,301
Evangeline	0	117,286	67,946	42,690	162,486	263,584	53,654	140,122	102,000	949,768
Fairplex T	14,871	30,625	14,546	11,117	31,875	60,529	10,884	31,198	47,513	253,158
Fair Grounds	90,759	200,501	111,573	101,408	314,831	477,058	123,089	244,528	75,413	1,739,160
Finger Lakes	54,976	151,436	80,316	64,941	195,240	352,009	67,863	202,492	113,626	1,282,899
Golden Gate	80,200	190,690	95,455	75,081	248,183	429,339	81,087	205,371	73,567	1,478,973
Great Lakes Down	29,027	64,031	39,525	23,616	89,053	152,404	26,234	86,963	59,393	570,246
Gulfstream	202,346	509,870	231,056	215,304	765,938	1,140,367	280,237	564,256	0	3,909,374
Harrington Raceway	72,128	107,753	68,371	41,441	123,449	241,988	34,246	119,480	79,908	888,764
Hawthorne T	45,825	175,100	101,027	87,839	254,522	397,429	81,149	232,946	127,335	1,503,172
Hazel Park	0	48,132	28,575	21,513	63,433	113,522	16,898	51,266	34,129	377,468

Hollywood	162,168	400,069	146,534	113,924	412,382	725,594	148,941	401,167	223,567	2,734,346
Hoosier Park T	70,291	139,036	68,838	44,405	186,107	276,695	45,416	139,908	134,229	1,104,925
Keeneland	46,849	91,581	56,503	65,332	154,871	272,356	62,381	147,822	119,441	1,017,136
Kentucky Downs	0	3,242	1,773	2,131	5,096	9,134	1,192	8,546	4,896	36,010
Laurel	164,017	290,822	187,432	127,296	452,295	712,559	151,852	414,145	249,216	2,749,634
Lone Star	0	75,086	46,261	36,694	124,341	224,862	34,330	117,928	9,290	668,792
Los Alamitos Q	0	20,654	62,145	6,803	0	241,450	0	120,404	72,062	523,518
Louisiana Downs	53,039	128,344	88,520	69,018	211,866	321,929	60,303	190,516	197,031	1,320,566
Maywood	0	138,459	51,385	43,713	124,774	285,852	30,381	112,279	165,993	952,836
Meadows	37,975	179,491	105,109	58,838	186,287	440,922	57,038	161,329	128,937	1,355,926
Monticello Raceway H	61,913	136,143	90,418	48,139	161,040	341,003	61,570	164,693	86,853	1,151,772
Mountaineer	271,458	458,133	240,920	154,466	551,630	1,049,522	195,452	448,482	349,364	3,719,427
Northern California Fair	7,592	13,307	8,758	6,100	20,611	35,838	7,741	18,864	19,578	138,389
Northfield	0	337,671	148,040	99,121	352,022	682,093	110,684	304,920	190,399	2,224,950
Oaklawn	40,436	104,772	58,127	46,192	145,649	253,329	58,715	109,510	0	816,730
Oak Tree @ Santa Anita	16,424	56,318	23,476	15,343	53,847	89,635	20,380	45,140	0	320,563
Penn National	176,425	252,389	153,371	94,632	348,973	726,765	133,324	308,320	194,387	2,388,586
Philadelphia Park	361,012	548,850	321,337	279,633	751,787	1,432,954	308,646	778,541	413,697	5,196,457
Pimlico	91,351	170,725	98,294	80,286	264,083	424,171	124,072	252,229	59,442	1,564,653
Pimlico Head to Head	0	220	70	20	719	775	9	236	0	2,049
Pocono Downs	0	104,635	47,552	32,379	115,933	193,717	37,878	93,894	78,380	704,368
Pompano	0	73,793	38,210	32,209	102,081	178,822	30,833	70,198	19,954	546,100
Portland Meadows	0	8,847	4,421	3,690	8,867	18,530	2,955	10,033	12,272	69,615
Riverdowns	1,073	33,583	20,281	12,004	44,899	86,245	12,127	48,047	18,200	276,459
Rosecroft	0	50,190	36,569	11,818	46,224	82,833	14,977	33,452	28,794	304,857
Sam Houston	0	131,259	77,607	53,119	204,949	368,383	63,982	146,506	76,242	1,122,047
Santa Anita	189,888	504,936	212,538	185,715	643,807	953,106	202,557	527,089	226,704	3,646,340
Saratoga	169,511	573,342	185,686	155,118	527,818	1,000,683	211,740	561,651	663,554	4,049,103
Scioto Downs	5,918	20,972	17,332	6,344	23,218	52,214	9,730	24,346	28,318	188,392
Suffolk Downs	63,456	172,653	112,622	73,484	234,497	452,378	81,554	274,039	85,800	1,550,483
Tampa Bay Downs	41,304	236,173	148,719	116,740	359,619	622,755	131,842	326,617	28,946	2,012,715
Thistledown	441	189,418	115,408	80,350	284,182	450,890	91,389	319,432	191,314	1,722,824
Timonium	2,551	6,730	4,933	4,719	12,931	18,960	2,973	11,947	14,322	80,066
Turf Paradise	49,234	161,436	104,185	66,803	234,028	404,294	75,489	205,825	89,339	1,390,633
Turfway	44,501	113,396	72,861	59,367	213,782	295,384	66,201	203,733	97,015	1,166,240
Yonkers	216,543	237,439	181,773	111,945	280,097	516,476	111,228	250,163	176,167	2,081,831
	<u>\$5,049,445</u>	<u>\$12,588,765</u>	<u>\$6,561,691</u>	<u>\$5,032,757</u>	<u>\$16,422,004</u>	<u>\$28,672,057</u>	<u>\$5,862,941</u>	<u>\$15,052,857</u>	<u>\$9,023,394</u>	<u>\$104,265,913</u>
	\$6,010,436	\$13,984,739	\$7,360,998	\$5,571,057	\$18,338,937	\$31,911,255	\$6,696,950	\$16,566,449	\$10,097,867	\$116,538,690

Pari-Mutuel Takeout Atlantic City Casinos In-State & Out-of-State Simulcasting 1/1/03 through 12/31/03

	Showboat	Trump Taj Mahal	Resorts	Sands	Caesar's	Bally's Park Place	Trump Marina	Tropicana	Borgata	Hub Total
Racing Days										
Casino Simulcasting Fund	\$30,063.02	\$69,940.62	\$36,822.05	\$27,871.68	\$91,711.69	\$159,573.15	\$33,501.26	\$82,849.37	\$50,497.91	\$582,830.75
Casino - Placement of Signal	154,639.26	384,491.07	199,937.82	153,838.87	504,115.12	875,195.93	180,904.90	461,143.05	273,926.35	3,188,192.37
A.C.R.A. Contingency Fund - State	0.00	0.00	0.00	0.00	0.00	0.00	0.00	0.00	0.00	0.00
Casino Share	504,022.61	1,170,195.05	624,031.50	472,143.35	1,545,609.78	2,722,314.80	562,064.92	1,395,716.69	848,509.16	9,844,607.86
Special Trust - Harness										
Sire Stakes	9,046.16	20,448.39	10,813.72	8,016.68	26,798.18	46,318.06	9,771.42	23,842.25	13,885.85	168,940.71
Track Purses	6,309.63	14,110.12	7,452.19	5,499.59	18,511.16	31,889.68	6,774.30	16,359.91	9,448.50	116,355.08
Breeder & Stallion Awards	854.86	1,915.57	1,012.12	747.43	2,512.30	4,330.78	918.27	2,222.73	1,286.52	15,800.58
Special Trust - Thoroughbred										
Thoroughbred Breeders	13,846.24	33,457.76	17,534.88	13,599.53	43,881.04	77,026.06	16,027.82	40,414.53	25,872.74	281,660.60
Breeding & Development										
Harness	972.97	2,188.81	1,157.14	855.87	2,869.51	4,952.41	1,048.13	2,545.55	1,477.47	18,067.86
Thoroughbred	830.78	2,007.36	1,052.04	815.41	2,632.57	4,621.05	961.47	2,424.33	1,552.34	16,897.35
Purse Allocation										
In State	43,559.89	63,298.91	36,512.68	24,277.37	87,581.47	148,864.69	38,329.89	68,839.10	48,717.19	559,981.19
Out of State	165,118.95	415,871.71	219,625.87	168,859.77	546,220.94	967,837.84	192,958.94	502,119.48	299,477.60	3,478,091.10
Track Share allocation										
In State	43,557.94	63,295.29	36,509.59	24,263.77	87,516.01	148,860.49	38,327.84	68,806.55	48,715.75	559,853.23
Out of State	165,117.70	415,870.20	219,625.09	168,857.84	546,220.30	967,837.10	192,957.82	502,118.32	299,477.34	3,478,081.71
Casino Simulcasting Special Fund	<u>53,760.08</u>	<u>135,400.55</u>	<u>71,506.38</u>	<u>54,978.40</u>	<u>177,839.87</u>	<u>315,110.58</u>	<u>62,824.04</u>	<u>163,480.92</u>	<u>97,504.68</u>	<u>1,132,405.50</u>
Total Commissions	<u>1,191,700.09</u>	<u>2,792,491.41</u>	<u>1,483,593.07</u>	<u>1,124,625.56</u>	<u>3,684,019.94</u>	<u>6,474,732.62</u>	<u>1,337,371.02</u>	<u>3,332,882.78</u>	<u>2,020,349.40</u>	<u>23,441,765.89</u>
Breakage	<u>32,232.66</u>	<u>74,476.64</u>	<u>37,017.00</u>	<u>27,428.66</u>	<u>98,433.37</u>	<u>161,348.06</u>	<u>35,884.13</u>	<u>86,354.40</u>	<u>51,702.42</u>	<u>604,877.34</u>
Total Amount Distributed	<u>1,223,932.75</u>	<u>2,866,968.05</u>	<u>1,520,610.07</u>	<u>1,152,054.22</u>	<u>3,782,453.31</u>	<u>6,636,080.68</u>	<u>1,373,255.15</u>	<u>3,419,237.18</u>	<u>2,072,051.82</u>	<u>24,046,643.23</u>
Amount Returned to Patron	<u>4,786,503.25</u>	<u>11,117,771.05</u>	<u>5,840,387.93</u>	<u>4,419,002.88</u>	<u>14,556,484.09</u>	<u>25,275,174.72</u>	<u>5,323,696.05</u>	<u>13,147,211.82</u>	<u>8,025,815.58</u>	<u>92,492,047.37</u>
Total Pari-Mutuel Handle	<u>\$6,010,436.00</u>	<u>\$13,984,739.10</u>	<u>\$7,360,998.00</u>	<u>\$5,571,057.10</u>	<u>\$18,338,937.40</u>	<u>\$31,911,255.40</u>	<u>\$6,696,951.20</u>	<u>\$16,566,449.00</u>	<u>\$10,097,867.40</u>	<u>\$116,538,690.60</u>

Pari-Mutuel Takeout Atlantic City Casinos In-State Simulcasting 1/1/03 through 12/31/03

	Showboat	Trump Taj Mahal	Resorts	Sands	Caesar's	Bally's Park Place	Trump Marina	Tropicana	Borgata	Hub Total
Racing Days										
Casino Simulcasting Fund	\$4,806.18	\$6,981.02	\$3,997.75	\$2,692.71	\$9,585.89	\$16,197.08	\$4,171.18	\$7,569.13	\$5,372.96	\$61,373.90
Casino - Placement of Signal	0.00	0.00	0.00	0.00	0.00	0.00	0.00	0.00	0.00	0.00
A.C.R.A. Contingency Fund - State	0.00	0.00	0.00	0.00	0.00	0.00	0.00	0.00	0.00	0.00
Casino Share	93,239.27	136,293.05	78,456.49	52,735.15	188,252.52	319,527.15	82,212.76	148,178.66	104,204.87	1,203,099.92
Special Trust - Harness										
Sire Stakes	1,888.85	2,603.69	1,512.39	739.03	3,519.70	5,675.65	1,460.56	2,504.88	1,095.34	21,000.09
Track Purses	1,500.32	2,119.56	1,202.66	706.09	2,869.41	4,579.36	1,190.18	2,022.36	854.04	17,043.98
Breeder & Stallion Awards	198.19	278.86	159.00	93.16	377.44	603.42	156.52	266.41	113.25	2,246.25
Special Trust - Thoroughbred Thoroughbred Breeders	1,217.82	1,978.10	1,122.75	1,009.34	2,818.29	5,337.77	1,362.92	2,774.40	3,310.06	20,931.45
Breeding & Development										
Harness	215.25	300.13	172.46	101.02	405.57	651.58	168.41	287.69	123.75	2,425.86
Thoroughbred	73.06	118.68	67.36	60.56	169.10	320.22	81.75	166.47	198.62	1,255.82
Purse Allocation										
In State	43,559.89	63,298.91	36,512.68	24,277.37	87,581.47	148,864.69	38,329.89	68,839.10	48,717.19	559,981.19
Out of State	0.00	0.00	0.00	0.00	0.00	0.00	0.00	0.00	0.00	0.00
Track Share Allocation										
In State	43,557.94	63,295.29	36,509.59	24,263.77	87,516.01	148,860.49	38,327.84	68,806.55	48,715.75	559,853.23
Out of State	0.00	0.00	0.00	0.00	0.00	0.00	0.00	0.00	0.00	0.00
Casino Simulcasting Special Fund	0.00	0.00	0.00	0.00	0.00	0.00	0.00	0.00	0.00	0.00
Total Commissions	190,256.77	277,267.29	159,713.13	106,678.20	383,095.40	650,617.41	167,462.01	301,415.65	212,705.83	2,449,211.69
Breakage	6,320.61	8,084.15	3,907.88	2,782.42	9,799.71	16,238.48	4,461.32	9,061.97	6,033.88	66,690.42
Total Amount Distributed	196,577.38	285,351.44	163,621.01	109,460.62	392,895.11	666,855.89	171,923.33	310,477.62	218,739.71	2,515,902.11
Amount Returned to Patron	764,413.62	1,110,622.56	635,685.99	428,839.38	1,524,037.89	2,572,342.11	662,085.67	1,203,114.38	855,733.29	9,756,874.89
Total Pari-Mutuel Handle	<u>\$960,991.00</u>	<u>\$1,395,974.00</u>	<u>\$799,307.00</u>	<u>\$538,300.00</u>	<u>\$1,916,933.00</u>	<u>\$3,239,198.00</u>	<u>\$834,009.00</u>	<u>\$1,513,592.00</u>	<u>\$1,074,473.00</u>	<u>\$12,272,777.00</u>

Pari-Mutuel Takeout Atlantic City Casinos Out-of-State Simulcasting 1/1/03 through 12/31/03

	Showboat	Trump Taj Mahal	Resorts	Sands	Caesar's	Bally's Park Place	Trump Marina	Tropicana	Borgata	Hub Total
Racing Days										
Casino Simulcasting Fund	\$25,256.84	\$62,959.60	\$32,824.30	\$25,178.97	\$82,125.80	\$143,376.07	\$29,330.08	\$75,280.24	\$45,124.95	\$521,456.85
Casino - Placement of Signal	154,639.26	384,491.07	199,937.82	153,838.87	504,115.12	875,195.93	180,904.90	461,143.05	273,926.35	3,188,192.37
A.C.R.A. Contingency Fund - State	0.00	0.00	0.00	0.00	0.00	0.00	0.00	0.00	0.00	0.00
Casino Share	410,783.34	1,033,902.00	545,575.01	419,408.20	1,357,357.26	2,402,787.65	479,852.16	1,247,538.03	744,304.29	8,641,507.94
Special Trust - Harness										
Sire Stakes	7,157.31	17,844.70	9,301.33	7,277.65	23,278.48	40,642.41	8,310.86	21,337.37	12,790.51	147,940.62
Track Purses	4,809.31	11,990.56	6,249.53	4,793.50	15,641.75	27,310.32	5,584.12	14,337.55	8,594.46	99,311.10
Breeder & Stallion Awards	656.67	1,636.71	853.12	654.27	2,134.86	3,727.36	761.75	1,956.32	1,173.27	13,554.33
Special Trust - Thoroughbred										
Thoroughbred Breeders	12,628.42	31,479.66	16,412.13	12,590.19	41,062.75	71,688.29	14,664.90	37,640.13	22,562.68	260,729.15
Breeding & Development										
Harness	757.72	1,888.68	984.68	754.85	2,463.94	4,300.83	879.72	2,257.86	1,353.72	15,642.00
Thoroughbred	757.72	1,888.68	984.68	754.85	2,463.47	4,300.83	879.72	2,257.86	1,353.72	15,641.53
Purse Allocation										
In State	0.00	0.00	0.00	0.00	0.00	0.00	0.00	0.00	0.00	0.00
Out of State	165,118.95	415,871.71	219,625.87	168,859.77	546,220.94	967,837.84	192,958.94	502,119.48	299,477.60	3,478,091.10
Track Share allocation										
In State	0.00	0.00	0.00	0.00	0.00	0.00	0.00	0.00	0.00	0.00
Out of State	165,117.70	415,870.20	219,625.09	168,857.84	546,220.30	967,837.10	192,957.82	502,118.32	299,477.34	3,478,081.71
Casino Simulcasting Special Fund	53,760.08	135,400.55	71,506.38	54,978.40	177,839.87	315,110.58	62,824.04	163,480.92	97,504.68	1,132,405.50
Total Commissions	1,001,443.32	2,515,224.12	1,323,879.94	1,017,947.36	3,300,924.54	5,824,115.21	1,169,909.01	3,031,467.13	1,807,643.57	20,992,554.20
Breakage	25,912.05	66,392.49	33,109.12	24,646.24	88,633.66	145,109.58	31,422.81	77,292.43	45,668.54	538,186.92
Total Amount Distributed	1,027,355.37	2,581,616.61	1,356,989.06	1,042,593.60	3,389,558.20	5,969,224.79	1,201,331.82	3,108,759.56	1,853,312.11	1,017,011.33
Amount Returned to Patron	4,022,089.63	10,007,148.49	5,204,701.94	3,990,163.50	13,032,446.20	22,702,832.61	4,661,610.38	11,944,097.44	7,170,082.29	3,873,559.67
Total Pari-Mutuel Handle	<u>\$5,049,445.00</u>	<u>\$12,588,765.10</u>	<u>\$6,561,691.00</u>	<u>\$5,032,757.10</u>	<u>\$16,422,004.40</u>	<u>\$28,672,057.40</u>	<u>\$5,862,942.20</u>	<u>\$15,052,857.00</u>	<u>\$9,023,394.40</u>	<u>\$104,265,913.60</u>

CY 2003 License Revenue Received Harness

Note: All license data is based on transactions that occurred in CY 2003.

Cat	Classification	Fee	ACRA		Freehold		Meadowlands		Trenton		Monmouth		Total	
			Qty	Total	Qty	Total	Qty	Total	Qty	Total	Qty	Total	Qty	Total
All Licenses Issued in CY 2003														
1	Owner	\$50		\$0	741	\$37,050	894	\$44,700	623	\$31,150	3	\$150	2,261	\$113,050
2	Trainer	\$50		\$0	198	\$9,900	237	\$11,850	49	\$2,450	2	\$100	486	\$24,300
3	Assistant Trainer	\$30		\$0		\$0		\$0		\$0		\$0	0	\$0
4	Driver	\$50		\$0	70	\$3,500	90	\$4,500	17	\$850		\$0	177	\$8,850
5	Driver / Trainer	\$50		\$0	296	\$14,800	248	\$12,400	40	\$2,000		\$0	584	\$29,200
6	Jockey	\$50		\$0		\$0		\$0		\$0		\$0	0	\$0
7	Jockey Apprentice	\$30		\$0		\$0		\$0		\$0		\$0	0	\$0
8	Jockey Agent	\$50		\$0		\$0		\$0		\$0		\$0	0	\$0
9	Stable Employee	\$5		\$0	490	\$2,450	542	\$2,710		\$0		\$0	1,032	\$5,160
10	C.I.D.	\$10		\$0	178	\$1,780	1,571	\$15,710	2	\$20	2	\$20	1,753	\$17,530
11	C.I.D. - Vendors	\$10		\$0	81	\$810	731	\$7,310	24	\$240		\$0	836	\$8,360
12	Pari-Mutuel Employee	\$25		\$0	87	\$2,175	360	\$9,000		\$0	2	\$50	449	\$11,225
13	Veterinarian	\$50		\$0	31	\$1,550	6	\$300		\$0		\$0	37	\$1,850
14	Valet	\$20		\$0		\$0		\$0		\$0		\$0	0	\$0
15	Plater	\$20		\$0	1	\$20	2	\$40		\$0		\$0	3	\$60
16	Vendor	\$50		\$0	13	\$650	23	\$1,150	5	\$250		\$0	41	\$2,050
17	Stable Name	\$50		\$0	79	\$3,950	191	\$9,550	98	\$4,900		\$0	368	\$18,400
18	Multiple Ownership	\$50		\$0	141	\$7,050	314	\$15,700	60	\$3,000	1	\$50	516	\$25,800
19	Corporate Stable Name	\$50		\$0	25	\$1,250	79	\$3,950	59	\$2,950		\$0	163	\$8,150
20	Authorized Agent	\$50		\$0		\$0		\$0	1	\$50		\$0	1	\$50
21	Off-Track Stables	\$50		\$0		\$0		\$0	32	\$1,600		\$0	32	\$1,600
23	Veterinarian - NJRC	\$0		\$0	4	\$0	6	\$0		\$0		\$0	10	\$0
25	C.I.D. - NJRC	\$0		\$0	19	\$0	41	\$0	1	\$0		\$0	61	\$0
26	Off-Track Proprietors	\$0		\$0		\$0		\$0		\$0		\$0	0	\$0
27	Official - NJRC	\$0		\$0	5	\$0	7	\$0		\$0		\$0	12	\$0
28	Partnership	\$0		\$0	2	\$0	3	\$0	10	\$0		\$0	15	\$0
31	Owner - 3 Year	\$150		\$0	99	\$14,850	245	\$36,750	279	\$41,850		\$0	623	\$93,450
All Licenses w/dups Issued in CY 2003			0	\$0	2,560	\$101,785	5,590	\$175,620	1,300	\$91,310	10	\$370	9,460	\$369,085
DUP Duplicate License Fees			\$5	\$0	4	\$20	29	\$145		\$0		\$0	33	\$165
Total Licenses w/dups Issued in CY 2003				\$0		\$101,805		\$175,765		\$91,310		\$370		\$369,250

CY 2003 License Revenue Received Thoroughbred

Note: All license data is based on transactions that occurred in CY 2003.

Cat	Classification	Fee	ACRA		Freehold		Meadowlands		Trenton		Monmouth		Total	
			Qty	Total	Qty	Total	Qty	Total	Qty	Total	Qty	Total	Qty	Total
All Licenses Issued in CY 2003														
1	Owner	\$50	108	\$5,400	16	\$800	135	\$6,750	340	\$17,000	696	\$34,800	1,295	\$64,750
2	Trainer	\$50	109	\$5,450	9	\$450	53	\$2,650	61	\$3,050	362	\$18,100	594	\$29,700
3	Assistant Trainer	\$30	2	\$60		\$0	1	\$30		\$0	99	\$2,970	102	\$3,060
4	Driver	\$50		\$0		\$0		\$0		\$0		\$0	0	\$0
5	Driver / Trainer	\$50		\$0		\$0		\$0		\$0		\$0	0	\$0
6	Jockey	\$50	60	\$3,000		\$0	17	\$850		\$0	95	\$4,750	172	\$8,600
7	Jockey Apprentice	\$30	4	\$120		\$0	7	\$210		\$0	9	\$270	20	\$600
8	Jockey Agent	\$50		\$0		\$0		\$0		\$0	22	\$1,100	22	\$1,100
9	Stable Employee	\$5	6	\$30	2	\$10	3	\$15		\$0	1,020	\$5,100	1,031	\$5,155
10	C.I.D.	\$10	51	\$510	1	\$10	44	\$440	35	\$350	469	\$4,690	600	\$6,000
11	C.I.D. - Vendors	\$10	1	\$10	2	\$20	9	\$90	42	\$420	401	\$4,010	455	\$4,550
12	Pari-Mutuel Employee	\$25	1	\$25	1	\$25	1	\$25	30	\$750	252	\$6,300	285	\$7,125
13	Veterinarian	\$50	1	\$50	1	\$50		\$0		\$0	14	\$700	16	\$800
14	Valet	\$20	11	\$220		\$0		\$0		\$0	7	\$140	18	\$360
15	Plater	\$20		\$0		\$0		\$0		\$0	13	\$260	13	\$260
16	Vendor	\$50		\$0		\$0	1	\$50	6	\$300	21	\$1,050	28	\$1,400
17	Stable Name	\$50	25	\$1,250	2	\$100	38	\$1,900	133	\$6,650	297	\$14,850	495	\$24,750
18	Multiple Ownership	\$50	2	\$100		\$0	3	\$150	6	\$300	34	\$1,700	45	\$2,250
19	Corporate Stable Name	\$50	5	\$250		\$0	5	\$250	54	\$2,700	26	\$1,300	90	\$4,500
20	Authorized Agent	\$50	1	\$50		\$0		\$0		\$0	31	\$1,550	32	\$1,600
21	Off-Track Stables	\$50		\$0		\$0		\$0	39	\$1,950		\$0	39	\$1,950
23	Veterinarian - NJRC	\$0	3	\$0		\$0		\$0		\$0		\$0	3	\$0
25	C.I.D. - NJRC	\$0	5	\$0		\$0	1	\$0		\$0	2	\$0	8	\$0
26	Off-Track Proprietors	\$0		\$0		\$0		\$0		\$0		\$0	0	\$0
27	Official - NJRC	\$0		\$0		\$0	1	\$0		\$0	2	\$0	3	\$0
28	Partnership	\$0		\$0		\$0		\$0	8	\$0	11	\$0	19	\$0
31	Owner - 3 Year	\$150	10	\$1,500	5	\$750	25	\$3,750	286	\$42,900	202	\$30,300	528	\$79,200
All Licenses w/dups Issued in CY 2003			405	\$18,025	39	\$2,215	344	\$17,160	1,040	\$76,370	4,085	\$133,940	5,913	\$247,710
DUP Duplicate License Fees		\$5		\$0		\$0	1	\$5		\$0	7	\$35	8	\$40
Total Licenses w/dups Issued in CY 2003				\$18,025		\$2,215		\$17,165		\$76,370		\$133,975		\$247,750

CY 2003 License Revenue Received Harness & Thoroughbred Combined

Note: All license data is based on transactions that occurred in CY 2003.

Cat	Classification	Fee	ACRA		Freehold		Meadowlands		Trenton		Monmouth		Total		
			Qty	Total	Qty	Total	Qty	Total	Qty	Total	Qty	Total	Qty	Total	
All Licenses Issued in CY 2003															
1	Owner	\$50	108	\$5,400	757	\$37,850	1,029	\$51,450	963	\$48,150	699	\$34,950	3,556	\$177,800	
2	Trainer	\$50	109	\$5,450	207	\$10,350	290	\$14,500	110	\$5,500	364	\$18,200	1,080	\$54,000	
3	Assistant Trainer	\$30	2	\$60	0	\$0	1	\$30	0	\$0	99	\$2,970	102	\$3,060	
4	Driver	\$50	0	\$0	70	\$3,500	90	\$4,500	17	\$850	0	\$0	177	\$8,850	
5	Driver / Trainer	\$50	0	\$0	296	\$14,800	248	\$12,400	40	\$2,000	0	\$0	584	\$29,200	
6	Jockey	\$50	60	\$3,000	0	\$0	17	\$850	0	\$0	95	\$4,750	172	\$8,600	
7	Jockey Apprentice	\$30	4	\$120	0	\$0	7	\$210	0	\$0	9	\$270	20	\$600	
8	Jockey Agent	\$50	0	\$0	0	\$0	0	\$0	0	\$0	22	\$1,100	22	\$1,100	
9	Stable Employee	\$5	6	\$30	492	\$2,460	545	\$2,725	0	\$0	1,020	\$5,100	2,063	\$10,315	
10	C.I.D.	\$10	51	\$510	179	\$1,790	1,615	\$16,150	37	\$370	471	\$4,710	2,353	\$23,530	
11	C.I.D. - Vendors	\$10	1	\$10	83	\$830	740	\$7,400	66	\$660	401	\$4,010	1,291	\$12,910	
12	Pari-Mutuel Employee	\$25	1	\$25	88	\$2,200	361	\$9,025	30	\$750	254	\$6,350	734	\$18,350	
13	Veterinarian	\$50	1	\$50	32	\$1,600	6	\$300	0	\$0	14	\$700	53	\$2,650	
14	Valet	\$20	11	\$220	0	\$0	0	\$0	0	\$0	7	\$140	18	\$360	
15	Plater	\$20	0	\$0	1	\$20	2	\$40	0	\$0	13	\$260	16	\$320	
16	Vendor	\$50	0	\$0	13	\$650	24	\$1,200	11	\$550	21	\$1,050	69	\$3,450	
17	Stable Name	\$50	25	\$1,250	81	\$4,050	229	\$11,450	231	\$11,550	297	\$14,850	863	\$43,150	
18	Multiple Ownership	\$50	2	\$100	141	\$7,050	317	\$15,850	66	\$3,300	35	\$1,750	561	\$28,050	
19	Corporate Stable Name	\$50	5	\$250	25	\$1,250	84	\$4,200	113	\$5,650	26	\$1,300	253	\$12,650	
20	Authorized Agent	\$50	1	\$50	0	\$0	0	\$0	1	\$50	31	\$1,550	33	\$1,650	
21	Off-Track Stables	\$50	0	\$0	0	\$0	0	\$0	71	\$3,550	0	\$0	71	\$3,550	
23	Veternarian - NJRC	\$0	3	\$0	4	\$0	6	\$0	0	\$0	0	\$0	13	\$0	
25	C.I.D. - NJRC	\$0	5	\$0	19	\$0	42	\$0	1	\$0	2	\$0	69	\$0	
26	Off-Track Proprietors	\$0	0	\$0	0	\$0	0	\$0	0	\$0	0	\$0	0	\$0	
27	Official - NJRC	\$0	0	\$0	5	\$0	8	\$0	0	\$0	2	\$0	15	\$0	
28	Partnership	\$0	0	\$0	2	\$0	3	\$0	18	\$0	11	\$0	34	\$0	
31	Owner - 3 Year	\$150	10	\$1,500	104	\$15,600	270	\$40,500	565	\$84,750	202	\$30,300	1,151	\$172,650	
All Licenses wo/dups Issued in CY 2003			405	\$18,025	2,599	\$104,000	5,934	\$192,780	2,340	\$167,680	4,095	\$134,310	15,373	\$616,795	
DUP Duplicate License Fees			\$5	0	\$0	4	\$20	30	\$150	0	\$0	7	\$35	41	\$205
Total Licenses w/dups Issued in CY 2003				\$18,025		\$104,020		\$192,930		\$167,680		\$134,345		\$617,000	

Revenue to State 2003 January 1, 2003 through December 31, 2003

Racing Association/Source	Expired Outstanding Pari-Mutuel Tickets	License Fees	Total State Revenue
Atlantic City Racing Association	\$7,467.76	\$18,025.00	\$25,492.76
Freehold Raceway	66,865.81	104,020.00	170,885.81
Meadowlands	266,118.43	192,930.00	459,048.43
Monmouth Park Jockey Club	152,612.45	134,345.00	286,957.45
Trenton		167,680.00	167,680.00
Total State Revenue	<u>\$493,064.45</u>	<u>\$617,000.00</u>	<u>\$1,110,064.45</u>

Actual Expired Out Per Tote

	Date ticket Purchased	Total	in state								OUT OF STATE	NJRC		TBA
			MDLS-H	MDLS-T	GSP-H	GSP-T	FRA/ACHI	MP	ACRA	VCHERS		4929 21 S BRED	4929 22 T BRED	4071 22
ACRA	6/29/02 - 6/27/03	100,263.70	2,501.50	745.80	0.00	0.00	1,138.10	3,395.85	4,306.00	2,827.65	85,348.80	1,830.05	5,637.71	5,637.84
ACHI/FRA	6/29/02 - 6/30/03	484,656.49	39,504.80	9,818.00	0.00	0.00	73,726.20	0.00	0.00	14,247.09	347,360.40	61,956.81	4,909.00	4,909.00
MDLS	6/29/02 - 6/13/03	1,724,674.02	350,350.75	87,377.45	0.00	0.00	33,268.25	23,010.40	0.00	38,229.76	1,192,437.41	199,299.30	66,819.13	66,819.06
MP	6/29/02 - 6/27/03	774,963.25	16,219.10	9,225.45	0.00	0.00	5,000.95	255,680.30	0.00	19,093.35	469,744.10	10,612.84	141,999.61	141,999.49
Grand Total		<u>3,084,557.46</u>	<u>408,576.15</u>	<u>107,166.70</u>	<u>0.00</u>	<u>0.00</u>	<u>113,133.50</u>	<u>282,086.55</u>	<u>4,306.00</u>	<u>74,397.85</u>	<u>2,094,890.71</u>	<u>273,699.00</u>	<u>219,365.45</u>	<u>219,365.39</u>

Expired Tickets	915,268.90
Vouchers	74,397.85
	<u>989,666.75</u>

NJ Racetracks 2003



The Meadowlands

Monmouth Park

Freehold Raceway

Atlantic City
Race Course