



*State of New Jersey*

OFFICE OF THE ATTORNEY GENERAL

DEPARTMENT OF LAW AND PUBLIC SAFETY

DIVISION OF NEW JERSEY RACING COMMISSION

PO Box 088

TRENTON, NJ 08625-0088

**CHRIS CHRISTIE**  
*Governor*

**PAULA T. DOW**  
*Attorney General*

**KIM GUADAGNO**  
*Lt. Governor*

**DENNIS A. DRAZIN**  
*Chairman*

December 7, 2010

The Honorable Chris Christie  
Governor of the State of New Jersey  
State House  
P. O. Box 001  
Trenton, New Jersey 08625

**ANTHONY T. ABBATIELLO**  
**ANTHONY R. CAPUTO**  
**PETER J. COFRANCESCO, III**  
**NOEL LOVE GROSS**  
**FRANCIS X. KEEGAN, JR.**  
*Commissioners*

**FRANCESCO ZANZUCCKI**  
*Executive Director*

Dear Governor Christie:

Pursuant to the provisions of Chapter 17 of the laws of 1940, as amended and supplemented, the Division of the New Jersey Racing Commission presents herewith its Seventieth Annual Report, covering the period from January 1, 2009 to December 31, 2009.

Sincerely,

John J. Tucker, Chairman  
James G. Aaron, Commissioner  
Anthony T. Abbatiello, Commissioner  
Anthony R. Caputo, Commissioner  
Noel Love Gross, Commissioner  
Francis X. Keegan, Jr., Commissioner  
Edward R. McGlynn, Commissioner  
Daniel A. Monaco, Commissioner  
Joseph C. Spicuzzo, Commissioner

Enclosure

- c Deborah R. Edwards, Chief of Staff, Office of the Attorney General
- Robert Lougy, Special Assistant, Office of the Attorney General
- David Wald, Director of Communications
- Frank Zanzuccki, Executive Director





**CHRIS CHRISTIE**  
*Governor*

**KIM GUADAGNO**  
*Lt. Governor*

**State of New Jersey**  
**OFFICE OF THE ATTORNEY GENERAL**  
**DEPARTMENT OF LAW AND PUBLIC SAFETY**  
**DIVISION OF NEW JERSEY RACING COMMISSION**  
PO Box 088  
TRENTON, NJ 08625-0088

**PAULA T. DOW**  
*Attorney General*

**DENNIS A. DRAZIN**  
*Chairman*

December 7, 2010

Paula T. Dow, Attorney General  
State of New Jersey  
Department of Law and Public Safety  
P. O. Box 080  
Trenton, New Jersey 08625

**ANTHONY T. ABBATIELLO**  
**ANTHONY R. CAPUTO**  
**PETER J. COFRANCESCO, III**  
**NOEL LOVE GROSS**  
**FRANCIS X. KEEGAN, JR.**  
*Commissioners*

**FRANCESCO ZANZUCCKI**  
*Executive Director*

Dear Attorney General Milgram:

Pursuant to the provisions of Chapter 17 of the laws of 1940, as amended and supplemented, the Division of the New Jersey Racing Commission presents herewith its Seventieth Annual Report, covering the period from January 1, 2009 to December 31, 2009.

Sincerely,

John J. Tucker, Chairman  
James G. Aaron, Commissioner  
Anthony T. Abbatiello, Commissioner  
Anthony R. Caputo, Commissioner  
Noel Love Gross, Commissioner  
Francis X. Keegan, Jr., Commissioner  
Edward R. McGlynn, Commissioner  
Daniel A. Monaco, Commissioner  
Joseph C. Spicuzzo, Commissioner

Enclosure

- c Deborah R. Edwards, Chief of Staff, Office of the Attorney General
- Robert Lougy, Special Assistant, Office of the Attorney General
- David Wald, Director of Communications
- Frank Zanzuccki, Executive Director



## Members of The New Jersey Racing Commission

John J. Tucker, Morris Township  
Chairman, 1999 - July 1, 2009

Mr. Tucker was elected Chairman in January 2002, three years after his appointment to the Commission. Now retired, he had a long and distinguished career in the consumer products industry, most recently having served in senior management positions at Philip Morris Co., Inc. and Kraft, Inc. from 1985-1994. He received a BA in Business Administration from Upsala College and a MS in Business from Northwestern University. Mr. Tucker continues to be active in many professional and civic organizations and is a member of the Advisory Council for Human Resource Management for the Conference Board. Prior to his appointment to the Commission, Mr. Tucker owned and bred thoroughbred horses for over 15 years. Mr. Tucker had officially resigned as Chairman effective July 1, 2009.

James G. Aaron  
Appointed 2006

Mr. Aaron is a distinguished attorney practicing presently with the firm Ansell, Zaro, Grimm and Aaron, whose offices are located in Ocean Township, New Jersey. Mr. Aaron graduated from Long Branch High School in 1962, earned a B.A. degree from Dickinson College in Carlisle, Pa. in 1966, and a J. D. Degree from New York University School of Law in 1969. Mr. Aaron has founded, incorporated and is a member of the Board of Directors of the Monmouth Community Bank. Mr. Aaron is the Vice-President of ERBA Company, Inc. which is a Real Estate and Equity Investment Firm. Mr. Aaron has vast experience in the horse racing and breeding industry having owned standardbred horses from 1983 - 2006. Mr. Aaron was part owner of "San Gimignano" who was the New Jersey Sire Stakes three year old pacer of the year in 2001. Mr. Aaron and his wife Madlyn, have been married 37 years and reside in West Long Branch, New Jersey.

Anthony T. Abbatiello  
Appointed 2006

Anthony T. Abbatiello's love for horses has resulted in 53 years dedicated to the horse racing industry. For 28 years, Mr. Abbatiello served the Standardbred Breeders and Owners Association of New Jersey, both as Co-Founder and as President. Mr. Abbatiello's previous titles included, Chairman of the Board for the United States Trotting Association, Director of the Standardbred Owners' Association of New York, Chairman of the New Jersey Sire Stakes Board of Directors, Trustee Chairman of the Board of American Horse Council in Washington D.C. and Trustee of the Trotting Horse Museum in Goshen, New York.

On July 2, 1995, Mr. Abbatiello was inducted into the Living Hall of Fame in Goshen, New York with his brother Carmine, a 1985 inductee. His induction resulted in the first brother tandem in the Hall of Fame. A decorated war veteran, Mr. Abbatiello served in the Korean War rising to the rank of Captain. Mr. Abbatiello demonstrated courage under fire, receiving numerous commendations including the Combat Infantry Badge, Silver Star, The Bronze Star with Valor, two Purple Hearts, the Presidential Unit Citation, Korean Campaign Ribbon with four Battle Stars and the Korean Service Medal.

Anthony R. Caputo, M.D.  
Commissioner since 2005

Dr. Anthony R. Caputo was born in Newark and raised in Belleville where he attended public school. For high school he enrolled at Seton Hall Prep where he excelled as their Quarterback for three years. After high school, he received his B.S. degree from St. Bonaventure University. Years later he was granted an Honorary Doctorate from St. Bonaventure University.

Dr. Caputo earned his Medical Degree in 1969 from University of Bologna. His internship and ophthalmology training was completed at the New Jersey Medical School. In 1974, he was offered a Heed Fellowship at the Wills Eye Hospital in Philadelphia for pediatric ophthalmology. Upon returning to Newark, he was appointed Director of Fight for Sight Children's Eye Care Center and became the first pediatric ophthalmologist to practice in New Jersey.

Noel Love Gross, Saddle River  
Former Chair and Commissioner since 1994

Mrs. Gross served as chair of the New Jersey Racing Commission from 1994 to 2001. She received her college education at Sarah Lawrence College in Bronxville, New York. In the private sector, she is President and Chief Administrative Officer of the Hudson Landing Corporation. In the public sector, Mrs. Gross has had a notable career highlighted by her appointment by President Reagan to serve as United States Alternate Representative to the 41<sup>st</sup> and 43<sup>rd</sup> United Nations General Assembly. She was asked to head the US Delegation to the UN Economic and Social Council Organizational Session, and was named head of the US delegation to the Special Session of the UN Development Program. She has also held various positions in the Republican National Committee and, locally, is a member of the Board of Trustees of 70001 Limited Development Foundation. Mrs. Gross is an owner/operator of two horse farms and her horses have won many competitions including multiple Grand Championships by Westfields and first-year Green Hunter of the Year National Championship by Ever So Dark.

Francis X. Keegan, Jr.  
Appointed 2006

Mr. Keegan, a lifelong horseman, was appointed to the Commission in 2006. He is a past President of the New Jersey Thoroughbred Breeders' Association, a past President of the New Jersey Thoroughbred Horsemen's Association and was a member of many horsemen organizations, including the Thoroughbred Club of America, the Green Mountain Horse Association, the National Hunt Association, and a patron of the Monmouth County Hunt. Mr. Keegan has bred, owned and raced horses in New Jersey since 1963, and has also been a successful consignor at numerous thoroughbred auction sales including Saratoga and Keeneland. Mr. Keegan is a graduate of Seton Hall University and attended Fordham Law School and served as an infantry officer after college in the United States Army. Mr. Keegan is a Wealth Management Advisor and First Vice President of Investments with UBS Financial Services, Inc. and in March 2006 celebrated 40 years with the firm. Over the years he has served on numerous bank boards, including Carteret S & L Bank of Commerce in Newark and Monmouth Community Bank.

Edward R. McGlynn, Point Pleasant Beach  
Commissioner since 1996

Mr. McGlynn received a B.A. degree from McKendree College in Lebanon Ill. and a J.D. from Seton Hall University School of Law. His career encompassed both the public and private sector. Mr. McGlynn served as Deputy and Chief of Staff to Governor Thomas H. Kean, and Executive and Special Assistant to Attorney General Irwin I. Kimmelman. Currently, he is President of ERM Government Affairs, Inc., Senior Vice President of Government Affairs for the Alman Group, LLC, and is of Counsel to Stone Mandia, Counsellors at Law. His community and professional affiliations are many and include medical and educational groups, and State Commissions.

Daniel A. Monaco, Woodbury  
1985 - March 2009

Dr. Monaco earned a B.S. in chemistry from Mt. Saint Mary's College and a DDS from Temple Dental School. Dr. Monaco served in the Army as captain in the U.S. Army Dental Corps. In 1957, he went into the general practice of dentistry and retired from practice in 1997. His professional and community affiliations include several dental associations and was a member of the dental staff of Underwood Memorial Hospital having served as chief of its Department of Dentistry. In public service, he served on several environmental commissions in West Deptford Township. Dr. Monaco was a co-founder and general partner of the Gloucester County Cable TV Co. He also was an incorporator and director of the Lenape State Bank and the Bank of Gloucester County having retired from banking in 2001. Prior to joining the Commission, Dr. Monaco was an owner and breeder of both thoroughbred and standardbred race horses for over 25 years. Mr. Monaco passed away on March 1, 2009.

Joseph C. Spicuzzo, New Brunswick  
Appointed December 2008

Mr. Spicuzzo began his public service career when he was elected Mayor for the Borough of Spotswood where he was also appointed Democratic Municipal Chairman in 1979. Mr. Spicuzzo is currently serving as the Sheriff of Middlesex County a position which he has held since being elected in 1980. Mr. Spicuzzo is also the current Middlesex County Democratic Chairman, a position which he has held since 1994. In addition to serving communities through elected positions, Mr. Spicuzzo is also very active in a wide variety of numerous community organizations. Mr. Spicuzzo had officially resigned as Commissioner effective November 27, 2009.

Frank Zanzuccki, Wall Township  
Executive Director since 1992

Mr. Zanzuccki received a B.S. in Accounting from St. Francis College, Loretto, Pa. He was the Chief Accountant for United Mine Workers of America from 1975-1978. He started his career with the New Jersey Racing Commission in 1978 and served in various positions and was appointed Executive Director in 1992. Mr. Zanzuccki was awarded the prestigious Len Foote Award in 1998 in recognition of outstanding contributions to the horse racing industry. He is also the first non-commissioner to be elected to the Association of Racing Commissioners International Board of Directors. In addition to this honor, Mr. Zanzuccki was subsequently elected as an officer of this international organization and served as its chairman from April 2004 through April 2005.

## MISSION STATEMENT

The New Jersey Racing Commission (“NJRC”) governs, directs and regulates horse racing and pari-mutuel wagering. The NJRC is a member of the Department of Law and Public Safety and is responsible for regulating the horse racing industry in the State through vigilant oversight of all racing and wagering related activities to ensure the integrity of the sport and the safety of its participants.

### Commission Structure

Horse racing in New Jersey is regulated by nine Commissioners who, by law, are appointed by the Governor, with the advice and consent of the Senate. They set policy and rule on all matters affecting racing such as issuing permits to conduct horse racing meets, approving expenditures and adjudicating licensing matters. They also consider the issuance of licenses for off-track wagering sites, are responsible for the oversight and regulation of account wagering which includes telephone and internet wagering in New Jersey. This year, the following individuals served as Commissioners: John J. Tucker, Chair, James G. Aaron, Anthony T. Abbatiello, Anthony R. Caputo, Noel Love Gross, Francis X. Keegan, Jr., Edward R. McGlynn, Daniel A. Monaco, and Joseph C. Spicuzzo.

The NJRC employs staff to effect policy, including an Executive Director who is responsible for overseeing the day-to-day operations of the Commission in accordance with accepted business and financial practices. Francesco Zanzuccki serves as the Executive Director.

NJRC has a staff of 62 full-time employees who conduct the daily functions of regulating horse racing. It also maintains a pool of 11 part-time workers to supplement staff as needed. Activities are divided and budgeted into four functional areas:

Administrative/Financial		\$2,131,026
Racing Operations		\$6,729,894
Licensing	\$ 731,395	
Veterinarians	\$ 959,522	
Chemical Testing	\$4,073,422	
Officials	\$ 965,555	
Pari-Mutuels		\$ 469,601
Investigations		\$ 475,949
Total Operating Budget		\$9,806,470

### Administrative/Financial

Much of the general administrative functions are performed by the Department of Law & Public Safety’s Consolidated Administrative and Support Services unit specifically organized to streamline the personnel, budget and logistics functions of several State agencies.

Commission personnel perform administrative functions specific to racing matters including rule and regulation composition, staffing and scheduling, communications with and oversight of industry-related organizations, adjudication support, and report writing. Commission staff maintains a horse racing financial system that records and calculates all receipts and payments of funds from pari-mutuel wagering. In addition, it monitors the finances of certain industry organizations as required or requested.

### **Racing Operations**

All matters related to the regulation of the actual “running of the races” are the responsibility of the employees in this functional area.

Each individual and entity associated with horse racing must be licensed by Commission personnel. All participants must also be fingerprinted. A state-of-the-art computer system networks the Trenton office with all satellite racetrack locations. The Commission has a very successful mail-out program and participates in the Association of Racing Commissioners International multi-jurisdictional licensing program for owners, and is a member of the National Racing Compact.

The Commission employs racing officials who are present at each racetrack to monitor the running of every race in New Jersey. They issue penalties for rule infractions and rule on matters affecting the integrity of racing, including licensing concerns.

Veterinarians are also present at every live race meet to ensure the safety of the animals and to verify that each horse is fit to race.

Race horse samples are tested for the presence of illegal drugs after each race, and on occasion, before a race and in out-of-competition settings. These randomly selected samples undergo a complete chemical analysis at a State Police Forensic Laboratory at the Meadowlands Racetrack.

### **Pari-Mutuels**

Every wager made on every live and simulcast race is recorded and checked for accuracy and compliance with Commission rules and regulations. Commission staff calculate financial information from these wagers for proper distribution of funds. Racing Commission staff oversee all aspects of pari-mutuel operations to ensure they are conducted with integrity.

### **Investigations**

The investigative staff is responsible for monitoring activities at all New Jersey racetracks, off-track wagering facilities, participating casinos, and off-track stabling facilities.

An in-house investigative unit provides the Commission with the ability to oversee the integrity of racing by conducting investigations into alleged rule violations, performing inspections to determine compliance with regulations, monitoring activity on racetracks and off-track stabling facilities, providing testimony at administrative hearings and much more.



## **HIGHLIGHTS AND 2009 KEY ISSUES**

The Commission continues to be very active in the oversight and expansion of the Racing Industry.

The Commission continues to be very active in the oversight and expansion of the Racing Industry. In September 2009, approval was granted for New Jersey to construct its fourth OTW facility. The New Jersey Sports and Exposition Authority was granted the approval to move forward with what will be the first “new construction” OTW facility, as the current facilities had all been renovation projects. The new site will be located in Bayonne, New Jersey. Pursuant to law, the Commission conducted a public hearing in the municipality where the OTW will be situated. The Commission then rendered a decision for the project which approval, as required by law, was reviewed and approved by the Attorney General. The facility is scheduled to open in Spring 2011.

The state of the art Quantum Data Center East, operated by Scientific Games Racing, Inc. now processes all wagers made at New Jersey Racetracks, Casino Race Books in Atlantic City, as well as the three operational OTW facilities located in Vineland, Woodbridge and Toms River. In addition, the Quantum Data Center East is a regional hub servicing pari-mutuel wagering from out-of state locations and is proving to be a cost effective way of doing business. The Racing Commission maintains a staff at this hub during all hours when wagers are placed and ensures that such activities are conducted properly.

Racing Commission staff monitors all aspects of pari-mutuel wagering to ensure compliance with rules and regulations governing betting. On-site supervisors of mutuels check for accuracy of system configuration relative to wagering options, proper transmission of wagers and television signals, and accuracy of pay-outs.

Recording and reporting of all wagers occurs at the Quantum Data Center East and are reviewed by Commission staff. These reports are subsequently forwarded to the Commission audit section for further compilation to effectuate the distribution of funds from wagers pursuant to law.

The Commission promulgates rules and regulations to support and enforce its regulatory functions.

During 2009, the following rules were either proposed or adopted:

#### N.J.A.C. 13:71-17.1, STARTING GATE

The proposed amendment to N.J.A.C. 13:71-17.1, Starting Gate, will implement a “fair start pole,” which will be erected approximately 200 feet before the start. The fair start pole shall be yellow and protrude at least two feet above the inner rail. The fair start pole would be used to disqualify a horse from the parimutuel wagering pools if the horse has not reached the fair start pole when the starting gate reaches the starting point. The proposed rule provides an opportunity for bettors to receive a refund of their wagers if a horse they wagered on did not receive a fair start and was disqualified.

#### N.J.A.C. 13:71-21.2, DASHES

The proposed amendment to N.J.A.C. 13:71-21.2, Dashes, amends the formula used in the distribution of purses in overnight races. The proposed distribution method contains additional language which distributes the money beyond the top five (5) finishers. The formula in the current rule distributes the money to the top five (5) finishers in the following manner, 50 percent, 25 percent, 12 percent, 8 percent and percent to first through fifth, respectively. The proposed distribution method provides for a portion of the money going to all finishers, up to a ten (10) horse field.

#### N.J.A.C. 13:71-27.56, THE PICK (N)

The proposed amendment to N.J.A.C. 13:71-27.56, Pick (N), adds a method of distribution in event of a carry-over and a special event progressive jackpot. The method of distribution in the proposed amendment retained the same major 75 percent payout and 25 percent minor payout with the following changes to the 25 percent minor payout distribution. The 25 percent minor payout is to be distributed 15 percent to the winning patrons who selected the first-place finisher in the greatest number of Pick (N) races, in the event no one had selected the first-place finisher in each of the Pick (N) races, and the remaining 10 percent carrying over to the progressive jackpot. The 75 percent major payout is to remain as a full distribution to the carry-over.

#### N.J.A.C. 13:71-4.1, BREAKING

The proposed amendment to N.J.A.C. 13:71-4.1, Breaking, clarifies terms and definitions within the breaking rule, including “extended break” or “extended run” and “lapped on breaks.”

#### N.J.A.C. 13:70-6.53, ELIGIBILITY

The adopted rule N.J.A.C. 13:70-6.53, Eligibility, changes the deadline to register mares for state bred purposes from September 1 to November.

#### N.J.A.C. 13:70-14A.17 and 13:71-23.16, ANABOLIC STEROIDS

The adopted rules N.J.A.C. 13:70-14A.17 and 13:71-23.16, Anabolic Steroids, permits use of certain steroids while banning use of most steroids.

## **NEW JERSEY EQUINE TESTING LABORATORY**

NJRC's Equine Drug Testing Program is administered at the New Jersey State Police Forensic Science Laboratory located at the Meadowlands racetrack. A staff of 14 chemists use modern testing equipment and methods to detect the presence of illegal substances in horses. In 2009, 36,516 blood/urine samples were tested resulting in 46 violations of the Commission's medication rules.

Total Samples Tested	36,516
Positives by Type	
Clenbuterol	2
Flunixin	17
Guaifenesin	1
Ketoprofen	1
Lasix	18
Phenylbutazone	6
Promazine-Sulfoxide	<u>1</u>
Total Positives	46

The Commission also randomly tests jockeys and drivers for the presence of illegal drugs. It also tests for alcohol abuse by race participants and officials. In 2009, 6 positives were detected from 795 samples tested.

## **NEW JERSEY HORSE RACING INJURY COMPENSATION RACING BOARD**

The Commission encouraged the creation of this Board that provides low cost group workers' compensation insurance for the horse racing industry. The Board consists of representatives of the public and private sector including members of horse race organizations, insurance providers, state insurance departments, and the NJRC. The program covers employees of the Board, namely drivers, jockeys and exercise riders with 2009 premiums established at \$1,413,449.

## **NEW JERSEY RACETRACKS**

### **Atlantic City Race Course**

4501 Black Horse Pike  
Mays Landing, New Jersey 08830  
609-641-2190

Atlantic City Race Course is owned and operated by Greenwood ACRA, Inc.

### **Freehold Raceway**

130 Park Avenue  
Freehold, New Jersey 07728  
732-462-3800  
[www.freeholdraceway.com](http://www.freeholdraceway.com)

Freehold Raceway is owned and operated by Pennwood Racing Inc. Pennwood Racing, Inc. is a company, 50% owned by Greenwood Limited Jersey , Inc. and 50% owned by Penn National GSFR, Inc.

### **Meadowlands Racetrack**

50 State Route 120  
East Rutherford, New Jersey 07073  
201-935-8500  
[www.thebigm.com](http://www.thebigm.com)

### **Monmouth Park Racetrack**

175 Oceanport Avenue  
Oceanport, New Jersey 07757  
732-222-5100  
[www.monmouthpark.com](http://www.monmouthpark.com)

Meadowlands Racetrack and Monmouth Park Racetrack are owned and operated by the New Jersey Sports and Exposition Authority.

## **NEW JERSEY OFF-TRACK WAGERING FACILITIES**

### **Favorites at Toms River**

1071 Highway 37 West  
Toms River, New Jersey 08755  
732-240-1210

Favorites at Toms River is a property owned by Freehold Raceway doing business as Freehold Raceway Off-track, LLC.

### **Favorites at Vineland**

1332 South Delsea Drive  
Vineland, New Jersey 08361  
856-696-5290

Favorites at Vineland is a property owned by Greenwood Racing doing business as ACRA Turf Club, LLC.

### **Favorites at Woodbridge**

3 Lafayette Road  
Fords, New Jersey 07095

Favorites at Woodbridge is a property owned by the New Jersey Sports and Exposition Authority.

## **NEW JERSEY ACCOUNT WAGERING**

New Jersey Account Wagering  
Meadowlands Racetrack  
50 State Route 120  
East Rutherford, New Jersey 07073  
800-498-9557 and/or 201-460-4141  
[www.4njbets.com](http://www.4njbets.com)

New Jersey Account wagering is operated pursuant to law by the New Jersey Sports and Exposition Authority.

## NEW JERSEY CASINOS APPROVED FOR CASINO SIMULCASTING

### **Bally's Park Place Hotel/Casino and Resort**

Park Place and the Boardwalk  
Atlantic City, New Jersey 08401  
609-340-2000

[www.ballysac.com](http://www.ballysac.com)

Owned by: Bally's Park Place, Inc.

### **Borgata Hotel Casino and Spa**

One Borgata Way  
Atlantic City, New Jersey 08401  
1-866-MY BORGATA (692-6742)

[www.theborgata.com](http://www.theborgata.com)

Owned by: Marina District  
Development Company, LLC

### **Caesars Atlantic City Hotel/Casino**

2100 Pacific Avenue  
Atlantic City, New Jersey 08401  
609-348-4411

[www.caesarsac.com](http://www.caesarsac.com)

Owned by: Boardwalk Regency Corporation

### **Harrah's Casino Hotel**

777 Harrah's Boulevard  
Atlantic City, New Jersey 08401  
800-645-6774 and/or 609-441-5165

[www.harrahsresort.com](http://www.harrahsresort.com)

Owned by: Harrah's Atlantic City  
Operating Company

### **Showboat Hotel/Casino**

801 Boardwalk  
Atlantic City, New Jersey 08401  
609-343-4000

[www.showboatac.com](http://www.showboatac.com)

Owned by: Showboat Atlantic City Operating  
Company, LLC

### **Tropicana Casino Resort**

2831 Boardwalk  
Atlantic City, New Jersey 08401  
609-340-4000

[www.tropicana.net](http://www.tropicana.net)

Owned by: Adamar of New Jersey

### **Trump Taj Mahal Casino Resort**

1000 Boardwalk at Virginia Avenue  
Atlantic City, New Jersey 08401  
609-755-4424

[www.trumptaj.com](http://www.trumptaj.com)

Owned by: Trump Taj Mahal Associates, LLC

## **THOROUGHBRED ORGANIZATIONS**

*Thoroughbred Horsemen's Association of New Jersey*, a not-for-profit corporation which advocates thoroughbred racing in the State. It provides general administrative services to its members including a group health benefits program.

*Thoroughbred Breeders Association of New Jersey* is an organization devoted to promoting and enhancing the breeding of New Jersey thoroughbreds. The Racing Commission administers the Breeders Award Program that provides monetary incentives to owners and breeders by offering purse enhancements for races for New Jersey bred.

## **STANDARD BRED ORGANIZATIONS**

*Standardbred Breeders and Owners Association of New Jersey* is a not-for-profit organization dedicated to advancing the cause of standardbred racing in the State. It provides general administrative services to its members including a group health benefits program.

*New Jersey Sires Stakes*, an agency within the State Department of Agriculture, promotes the owning and breeding of New Jersey standardbreds. Nearly \$11 million in purse money is devoted to Sires Stake races restricted to horses sired by stallions resident in New Jersey. The program is funded by distributions from pari-mutuel handle at harness tracks and from nominating and sustaining payments by horse owners.

NEW JERSEY  
2009 HARNESS RACING DATES

Freehold Raceway

January 1 through June 6

Dark: Sundays and Mondays during January, February, March  
(Except: January 19 and February 16)  
January 20, February 17, March 31  
Tuesdays, March 10, 17, 24\*  
Sundays, Mondays, Tuesdays during April  
Sundays through Wednesdays during May and June  
(Except: Wed., May 6, 13, 20\* and May 25) 99 Dates

August 12\*\*\* through December 31

Dark: Sundays, Mondays and Tuesdays\*\*\*\*  
(Except: Monday, September 7)  
(Except: Monday, October 12 and Tuesday, December 29)  
November 26  
December 23, 24, 25 79 Dates

Meadowlands Racetrack

January 1 through August 22  
December 18, 19, 26\*\*

Dark: Mondays and Tuesdays during January through March  
(Except: February 16)  
Sundays through Tuesdays during April through August  
(Except: April 5, May 10, May 25, June 21) 151 Dates  
Wednesdays, May 6, 20 and June 17  
Friday, August 14\*\*

Total Harness Dates: 329 Dates

\*Amended: Eliminated 3/10,17,24; added 5/6,13,20

\*\*Amended: Eliminated 8/14; 5/6,20, 6/17; added 8/22; 12/18,19,26

\*\*\*Amended: Eliminated 8/1,5,6,7,8,11,18,25/09

\*\*\*\*Amended: Eliminated 9/1,9,15,22,29; 10/14/09

Amended: Eliminated 12/18, 19, 26





NEW JERSEY LIVE AND SIMULCASTING MEETS

GROSS HANDLE SUMMARY

2009

Thru 12/31/09		RACING		GROSS HANDLE	OUT-OF-STATE GENERATED	NJ HANDLE	ON-TRACK LIVE	TO NJ TRACKS	TO AC	TO ACHI	TO FRA	TO MDLS	TO MP	ON-TRACK ATTENDANCE
NJ - TRACK	PERIOD	DAYS												
<b>T-BRED TRACK</b>														
ACRA	Apr 16, 17, 23, 24 and May	6		3,038,850	2,058,826	980,024	771,243	208,782	0	32,434	0	106,288	70,060	25,673
MDLS	10/01 thru 12/05	47		58,801,204	50,782,349	8,018,855	6,550,773	1,468,082	117,742	0	359,338	0	991,002	106,933
MP	5/09 thru 10/27	93		280,739,092	233,452,296	47,286,796	38,072,743	9,214,053	736,206	306,290	1,450,342	6,721,215	0	650,612
<b>SUB-TOTAL (T)</b>		<b>146</b>		<b>\$342,579,145</b>	<b>\$286,293,471</b>	<b>\$56,285,675</b>	<b>\$45,394,758</b>	<b>\$10,890,917</b>	<b>\$853,948</b>	<b>\$338,724</b>	<b>\$1,809,680</b>	<b>\$6,827,503</b>	<b>\$1,061,062</b>	<b>783,218</b>
<b>HARNESS TRACK</b>														
ACHI	1/01 thru 6/06	96		39,922,411	30,257,618	9,664,794	6,540,938	3,123,855	92,556	0	0	2,492,473	538,827	113,971
FRA	8/01 thru 12/31	78		29,066,789	21,725,304	7,341,485	4,944,589	2,396,895	81,992	0	0	1,895,788	419,116	87,264
MDLS	1/01 thru 8/21	147		329,698,285	277,037,931	52,660,354	45,823,443	6,836,912	486,326	3,550,521	1,070,173	0	1,729,892	427,334
<b>SUB-TOTAL (H)</b>		<b>321</b>		<b>\$398,687,485</b>	<b>\$329,020,853</b>	<b>\$69,666,633</b>	<b>\$57,308,970</b>	<b>\$12,357,662</b>	<b>\$660,873</b>	<b>\$3,550,521</b>	<b>\$1,070,173</b>	<b>\$4,388,261</b>	<b>\$2,687,834</b>	<b>628,569</b>
<b>TOTAL LIVE-2009</b>		<b>467</b>		<b>\$741,266,631</b>	<b>\$615,314,323</b>	<b>\$125,952,307</b>	<b>\$102,703,728</b>	<b>\$23,248,580</b>	<b>\$1,514,822</b>	<b>\$3,889,246</b>	<b>\$2,879,853</b>	<b>\$11,215,764</b>	<b>\$3,748,897</b>	<b>1,411,787</b>
<b>OUT-OF-STATE SIGNAL RECEIVED</b>														
ACHI (H) L	1/1 thru 6/09	3,385		29,253,359	0	29,253,359								
ACRA (T) D	1/1 thru 4/25	5,258		13,704,718	0	13,704,718								
ACRA (T) L	Apr 16, 17, 23, 24 and May	1,075		3,517,068	0	3,517,068								
<b>ACRA TOTAL</b>		<b>6,333</b>		<b>17,221,786</b>	<b>0</b>	<b>17,221,786</b>								
FRA (H)	5/28 thru 7/31	1,464		6,831,728	0	6,831,728								
FRA (H) L	8/01 thru 12/31	3,581		21,980,986	0	21,980,986								
<b>FRA TOTAL</b>		<b>5,045</b>		<b>28,812,714</b>	<b>0</b>	<b>28,812,714</b>								
MDLS (H) L	1/01 thru 8/21	5,005		154,870,166	0	154,870,166								
MDLS (H)	12/12 thru 12/31	359		8,755,957	0	8,755,957								
<b>TOTAL (H)</b>		<b>5,364</b>		<b>163,626,123</b>	<b>0</b>	<b>163,626,123</b>								
MDLS (T)	8/13 thru 9/23	755		18,610,406	0	18,610,406								
MDLS (T) L	10/01 thru 12/05	1,363		34,864,318	0	34,864,318								
<b>TOTAL (T)</b>		<b>2,118</b>		<b>53,474,724</b>	<b>0</b>	<b>53,474,724</b>								
<b>MDL TOTAL</b>		<b>12,846</b>		<b>217,100,847</b>	<b>0</b>	<b>217,100,847</b>								
MP (T)	1/01 thru 5/28	3,979		42,046,735	0	42,046,735								
MP (T) L	5/29 thru 9/05	3,196		46,688,070	0	46,688,070								
<b>MP TOTAL</b>		<b>7,175</b>		<b>88,734,805</b>	<b>0</b>	<b>88,734,805</b>								
<b>TOTAL SIGNAL REC'D</b>		<b>29,420</b>		<b>\$381,123,510</b>	<b>\$0</b>	<b>\$381,123,510</b>	<b>\$0</b>	<b>\$0</b>	<b>\$0</b>	<b>\$0</b>	<b>\$0</b>	<b>\$0</b>	<b>\$0</b>	<b>0</b>
<b>TOTAL 2009</b>		<b>29,887</b>		<b>\$1,122,390,141</b>	<b>\$615,314,323</b>	<b>\$507,075,818</b>	<b>\$102,703,728</b>	<b>\$23,248,580</b>	<b>\$1,514,822</b>	<b>\$3,889,246</b>	<b>\$2,879,853</b>	<b>\$11,215,764</b>	<b>\$3,748,897</b>	<b>1,411,787</b>

L = Generated during the period of Live Racing

FIGURES THRU: 12/31/09

**NEW JERSEY RACING COMMISSION  
SUMMARY OF HANDLE GENERATED  
IN NEW JERSEY**

Figures through 12/31/2009 & 12/31/2008

NJ TRACK WAGERING	2009	2008	2009				2008				PERCENT CHANGE			NJ - TRACK ATTENDANCE		
	RACE DAYS	RACE DAYS	NJ-TRACK LIVE	IN-STATE signal received	OUT-OF-STATE signal received	TRACK TOTAL	NJ-TRACK LIVE	IN-STATE signal received	OUT-OF-STATE signal received	TRACK TOTAL	NJ-TRACK LIVE	IN-STATE signal received	OUT-OF-STATE signal received	2009	2008	PERCENT CHANGE
<b>REGULAR MEET:</b>																
ATLANTIC CITY HARNESS, INC.	96	101	\$6,540,938	\$3,889,246	\$29,253,359	\$39,683,543	\$9,282,316	\$4,283,096	\$36,420,162	\$49,985,574	-25.86%	n/a	-19.68%	113,971	121,255	-1.11%
<i>AVERAGE DAILY</i>			68,135	n/a	193,731		91,904	n/a	241,193				1,187	1,201		
A. C. RACING ASSOC.	6	6	771,243	1,514,822	17,221,786	19,507,851	807,932	1,588,703	18,650,775	21,047,410	n/a	n/a	-7.66%	25,673	25,485	0.74%
<i>AVERAGE DAILY</i>			128,541	n/a	70,872		134,655	n/a	76,752				4,279	4,248		
FREEHOLD RACEWAY	78	90	4,944,589	2,879,853	28,812,714	36,637,156	7,965,533	4,450,344	42,196,542	54,612,419	-28.38%	n/a	-31.72%	87,264	101,316	-0.62%
<i>AVERAGE DAILY</i>			63,392	n/a	313,182		88,506	n/a	458,658				1,119	1,126		
MEADOWLANDS (H)	147	149	45,823,443	8,324,678	163,626,123	217,774,244	56,796,638	9,195,620	189,046,438	255,038,696	-18.22%	n/a	-13.45%	427,334	472,109	-8.25%
<i>AVERAGE DAILY</i>			311,724	n/a	673,359		381,185	n/a	777,969				2,907	3,169		
MEADOWLANDS (T)	47	41	6,550,773	2,603,937	53,474,724	62,629,434	6,683,206	5,156,981	65,529,632	77,369,819	n/a	n/a	-24.22%	106,933	103,564	n/a
<i>AVERAGE DAILY</i>			n/a	n/a	1,909,812		n/a	n/a	2,520,370				n/a	n/a		
MONMOUTH PARK	93	100	38,072,743	3,774,409	88,734,805	130,581,957	42,516,559	4,687,624	104,402,121	151,606,304	n/a	n/a	-15.01%	650,612	676,046	3.48%
<i>AVERAGE DAILY</i>			409,384	n/a	365,164		425,166	n/a	429,638				6,996	6,760		
<b>TOTAL NJ TRACKS</b>	<b>467</b>	<b>487</b>	<b>\$102,703,729</b>	<b>\$22,986,945</b>	<b>\$381,123,511</b>	<b>\$506,814,185</b>	<b>\$124,052,184</b>	<b>\$29,362,368</b>	<b>\$456,245,670</b>	<b>609,660,222</b>	<b>-17.21%</b>	<b>-21.71%</b>	<b>-16.47%</b>	<b>1,411,787</b>	<b>1,499,775</b>	<b>-5.87%</b>

**NON-TRACK WAGERS:**

	NO. OF DAYS		2009			2008			PERCENT CHANGE		
	2009	2008	IN-STATE signal received	OUT-OF-STATE signal received	TOTAL	IN-STATE signal received	OUT-OF-STATE signal received	TOTAL	IN-STATE signal received	OUT-OF-STATE signal received	TOTAL
TOMS RIVER	365	247	6,114,701	34,779,734	40,894,435	5,021,534	24,690,618	29,712,152	n/a	n/a	n/a
<i>AVERAGE DAILY</i>			n/a	143,126	n/a	n/a	115,918	n/a	n/a	n/a	n/a
WOODBRIIDGE	365	366	11,488,910	79,876,234	91,365,144	12,698,461	83,142,401	95,840,862	n/a	-15.79%	-4.67%
<i>AVERAGE DAILY</i>			n/a	328,709	n/a	n/a	390,340	n/a	n/a	n/a	n/a
VINELAND	365	366	983,805	13,994,765	14,978,570	998,624	14,235,406	15,234,030	n/a	-13.83%	-1.68%
<i>AVERAGE DAILY</i>			n/a	57,592	n/a	n/a	66,833	n/a	n/a	n/a	n/a
INTERNET	365	366	11,988,249	71,290,229	83,278,478	11,530,110	67,560,625	79,090,735	n/a	-7.51%	5.29%
<i>AVERAGE DAILY</i>			n/a	293,375	n/a	n/a	317,186	n/a	n/a	n/a	n/a
TELEPHONE	365	366	1,815,632	7,383,893	9,199,525	2,008,452	7,977,535	9,985,987	n/a	-18.87%	-7.88%
<i>AVERAGE DAILY</i>			n/a	30,386	n/a	n/a	37,453	n/a	n/a	n/a	n/a
<b>TOTAL OTW &amp; ACCT WAGERING</b>			\$32,391,297	\$207,324,855	\$239,716,152	\$32,257,248	\$197,606,652	\$229,863,833			

<b>CASINOS:</b>											
	2009	2008	IN-STATE signal received	OUT-OF-STATE signal received	TOTAL	IN-STATE signal received	OUT-OF-STATE signal received	TOTAL	PERCENT CHANGE	NJ - TRACK ATTENDANCE	
										2009	2008
TOTAL CASINO WAGERING	365	366	7,624,085	77,251,944	84,876,029	8,755,192	85,739,639	94,494,831	n/a	-21.02%	n/a
<i>AVERAGE DAILY</i>			n/a	317,909	n/a	n/a	402,534	n/a	n/a	n/a	n/a
<b>TOTAL NON-TRACK WAGERS</b>			\$40,015,382	\$284,576,799	\$324,592,181	\$41,012,440	\$283,346,291	\$324,358,664			

TOTAL NEW JERSEY WAGERING	2009				2008				PERCENT CHANGE			NJ - TRACK ATTENDANCE	
	NJ-TRACK LIVE	IN-STATE signal received	OUT-OF-STATE signal received	TRACK TOTAL	NJ-TRACK LIVE	IN-STATE signal received	OUT-OF-STATE signal received	TRACK TOTAL	NJ-TRACK LIVE	IN-STATE signal received	OUT-OF-STATE signal received	2009	2008
	\$102,703,729	\$63,002,327	\$665,700,310	\$831,406,366	\$124,052,184	\$70,374,808	\$739,591,961	\$934,018,886	-17.21%	-10.48%	-9.99%	1,411,787	1,499,775

## New Jersey Racing Commission

### 5-Year Comparison New Jersey Thoroughbred Tracks

<u>ATLANTIC CITY RACING ASSOCIATION</u>	<u>2005- 4 DATES</u>	<u>2006- 4 DATES</u>	<u>2007- 4 DATES</u>	<u>2008- 6 DATES</u>	<u>2009- 6 DATES</u>
<i>Total Mutuel Handle</i>	\$412,528	\$692,856	\$731,283	\$807,932	\$980,024
<i>Daily Average Mutuel Handle</i>	\$103,132	\$173,214	\$182,821	\$134,655	\$163,337
<i>Total Attendance</i>	8,463	16,344	17,239	25,485	25,673
<i>Daily Average Attendance</i>	2,116	4,086	4,310	4,248	4,279
<u>MONMOUTH PARK JOCKEY CLUB</u>	<u>2005- 90 DATES</u>	<u>2006- 87 DATES</u>	<u>2007- 79 DATES</u>	<u>2008-100 DATES</u>	<u>2009-93 DATES</u>
<i>Total Mutuel Handle</i>	\$72,599,780	\$63,138,541	\$74,786,712	\$53,671,702	\$47,286,796
<i>Daily Average Mutuel Handle</i>	\$806,664	\$725,730	\$946,667	\$536,717	\$508,460
<i>Total Attendance</i>	797,262	712,782	755,916	676,046	650,612
<i>Daily Average Attendance</i>	8,858	8,193	9,569	6,760	6,996
<u>NJ SPORTS &amp; EXPOSITION AUTHORITY</u>	<u>2005- 27 DATES</u>	<u>2006- 33 DATES</u>	<u>2007- 41 DATES</u>	<u>2008-41 DATES</u>	<u>2009-47 DATES</u>
<i>Total Mutuel Handle</i>	\$10,923,873	\$10,407,263	\$12,313,856	\$8,440,013	\$8,018,855
<i>Daily Average Mutuel Handle</i>	\$404,588	\$315,372	\$300,338	\$205,854	\$170,614
<i>Total Attendance</i>	109,582	115,460	131,275	103,564	106,933
<i>Daily Average Attendance</i>	4,059	3,499	3,202	2,526	2,275

### 5-Year Comparison New Jersey Harness Tracks

<u>FREEHOLD RACING ASSOCIATION</u>	<u>2005- 96 DATES</u>	<u>2006- 95 DATES</u>	<u>2007- 92 DATES</u>	<u>2008-90 DATES</u>	<u>2009-78 DATES</u>
<i>Total Mutuel Handle</i>	\$21,868,445	\$18,586,173	\$16,227,032	\$11,313,411	\$7,341,485
<i>Daily Average Mutuel Handle</i>	\$227,796	\$195,644	\$176,381	\$125,705	\$94,122
<i>Total Attendance</i>	131,884	126,948	119,641	101,316	87,264
<i>Daily Average Attendance</i>	1,374	1,336	1,300	1,126	1,119
<u>ATLANTIC CITY HARNESS, INC.</u>	<u>2005- 95 DATES</u>	<u>2006- 97 DATES</u>	<u>2007- 98 DATES</u>	<u>2008-101 DATES</u>	<u>2009-96 DATES</u>
<i>Total Mutuel Handle</i>	\$21,279,817	\$22,231,323	\$18,084,739	\$14,248,405	\$9,664,794
<i>Daily Average Mutuel Handle</i>	\$223,998	\$229,189	\$184,538	\$141,073	\$100,675
<i>Total Attendance</i>	136,329	134,973	132,001	121,255	113,971
<i>Daily Average Attendance</i>	1,435	1,391	1,347	1,201	1,187
<u>NJ SPORTS &amp; EXPOSITION AUTHORITY</u>	<u>2005- 157 DATES</u>	<u>2006- 157 DATES</u>	<u>2007- 147 DATES</u>	<u>2008-149 DATES</u>	<u>2009-147 DATES</u>
<i>Total Mutuel Handle</i>	\$115,358,727	\$99,216,761	\$75,471,868	\$64,933,091	\$52,660,354
<i>Daily Average Mutuel Handle</i>	\$734,769	\$631,954	\$513,414	\$435,793	\$358,234
<i>Total Attendance</i>	675,270	644,859	549,127	472,109	427,334
<i>Daily Average Attendance</i>	4,301	4,107	3,736	3,169	2,907
<b>TOTALS USED IN CHARTS====&gt;</b>					
<b>NEW JERSEY TRACK HANDLE</b>	\$242,443,170	\$214,272,917	\$197,615,490	\$153,414,554	\$125,952,308
<b>ON TRACK ATTENDANCE</b>	1,858,790	1,751,366	1,705,199	1,499,775	1,411,787

**NEW JERSEY RACING COMMISSION**  
**SUMMARY OF OUT-OF-STATE SIGNAL RECEIVED BY TRACK**  
**2009**

<i>OUT-OF-STATE SIGNAL RECEIVED</i>	<i>ATLANTIC CITY RACING ASSOC.</i>	<i>FREEHOLD RACEWAY</i>	<i>MEADOWLANDS</i>	<i>MONMOUTH PARK T-BRED</i>	<i>T O T A L RECEIPTS</i>
AQUEDUCT	\$1,092,711	4,997,906	13,908,061	6,213,445	26,212,123
ARAPAHOE		236			236
ARC DE Triomphe			2,491	309	2,800
ARLINGTON PARK	467,827	791,432	4,287,369	2,936,069	8,482,697
AT THE RACES		9,745			9,745
ATR IRISH RACING		8,450			8,450
AUSTRALIAN RACE			563,640	138,664	702,304
BALMORAL	159,568	950,919	3,877,288	238,487	5,226,262
BELMONT	1,260,128	3,780,655	13,540,395	11,527,615	30,108,793
BREEDERS CUP FUTURE	402	958	4,937	2,918	9,215
BUELAH & RIVERDOWN	198,617	612,656	2,344,479	760,447	3,916,199
BUFFALO RACEWAY		125,817	225,487	30,976	382,280
CAL-EXPO	8,028		1,138,170	89,807	1,236,005
CALDER	410,013	981,045	3,888,081	2,461,987	7,741,126
CANTERBURY	2,522	13,371	26,892	66,359	109,144
CHARLES TOWN	297,581	797,313	4,569,219	1,413,834	7,077,947
CHESTER DOWNS	162,097	1,082,540	2,131,753	425,486	3,801,876
CHURCHILL	495,966	1,123,822	4,717,916	2,849,515	9,187,219
COLONIAL DOWNS	121,601	214,784	694,654	419,687	1,450,726
DELAWARE PK	535,280	758,962	3,836,323	2,026,289	7,156,854
DELMAR	148,929	582,009	2,510,051	1,354,029	4,595,018
DELTA DOWNS	152,605	410,653	2,583,714	609,651	3,756,623
DERBY FUTURE	2,840	6,448	21,149	20,865	51,302
DOVER DOWNS	140,149	899,894	2,260,738	262,934	3,563,715
DUBAI	7,769	14,904	71,604	34,590	128,867
DUQUIN		14,457	31,568	4,757	50,782
ELLIS PARK	86,892	128,735	819,173	520,649	1,555,449
EMERALD DOWNS	16,181	84,966	451,171	18,202	570,520
EVANGELINE	220,178	427,100	3,054,665	718,435	4,420,378
FAIRGROUND	239,114	830,716	3,181,325	1,381,183	5,632,338
FAIRMOUNT		38,136	175,372	49,133	262,641
FAIRPLEX	28,287	82,213	294,271	189,539	594,310
FINGER LAKES	326,288	827,318	2,468,503	1,179,032	4,801,141
FLAMBORO		95,107			95,107
FORT ERIE RACETRACK	71,624	142,802	607,056	270,586	1,092,068
FRASIER DOWNS		21,543			21,543
GEORGIAN DOWNS		9,200	174,465	20,392	204,057
GOLDEN GATE	259,156	807,711	3,635,347	1,343,753	6,045,967
GULFSTREAM	623,436	2,550,962	8,139,610	4,139,360	15,453,368
HARRINGTON	102,886	342,682	1,138,808	112,676	1,697,052
HASTINGS PARK RACE		26,217			26,217
HAWTHORNE	273,388	700,368	2,846,920	1,380,518	5,201,194
HAZEL PARK	18,250	33,119	136,458	4,306	192,133
HIALEAH		43,775	150,719	60,979	255,473
HOLLYWOOD	367,946	1,274,612	5,425,272	2,126,769	9,194,599
HOOSIER PARK	121,067	772,842	1,873,607	648,071	3,415,587
INDIANA DOWNS		621,542	2,146,816	428,926	3,197,284
KEENELAND	338,678	954,208	2,964,696	1,779,438	6,037,020
KENTUCKY	6,052	6,175	34,155	17,126	63,508
LAUREL	403,834	994,831	3,583,208	1,705,946	6,687,819
LITTLE BROWN JUG	1,070	26,008	57,268	6,243	90,589
LONE STAR PARK	71,172	251,937	1,836,642	650,790	2,810,541
LOS ALAMITOS			400,624	12,593	413,217
LOUISIANA	179,296	412,375	2,344,730	1,154,962	4,091,363

**NEW JERSEY RACING COMMISSION**  
**SUMMARY OF OUT-OF-STATE SIGNAL RECEIVED BY TRACK**  
**2009**

<i>OUT-OF-STATE SIGNAL RECEIVED</i>	<i>ATLANTIC CITY RACING ASSOC.</i>	<i>FREEHOLD RACEWAY</i>	<i>MEADOWLANDS</i>	<i>MONMOUTH PARK T-BRED</i>	<i>T O T A L RECEIPTS</i>
MAYWOOD	75,923	403,551	2,302,701	162,319	2,944,494
MEADOWS	248,106	895,683	2,418,678	422,811	3,985,278
MOHAWK	120,158	536,183	2,827,096	140,298	3,623,735
MONTAINEER	393,871	817,084	4,979,918	732,093	6,922,966
MONT'LLO RACEWAY	255,005	1,947,294	5,074,607	888,568	8,165,474
NORTHERN CALIF. FAIR		115,533	396,960	182,826	695,319
NORTHFIELD	339,442	1,160,492	5,105,808	347,658	6,953,400
NORTHLANDS		9,520			9,520
NORTHVILLE		66,471	239,961	21,543	327,975
OAKLAWN	165,004	515,559	2,463,117	965,152	4,108,832
OAK TREE @ SANTA	265,129	744,111	2,821,167	1,592,936	5,423,343
OCEAN DOWNS	5,084	50,785	112,421	6,584	174,874
PENN NATIONAL	394,787	686,515	4,693,765	1,322,024	7,097,091
PHILA PARK	1,137,150	2,395,788	7,074,371	3,865,857	14,473,166
PIMLICO	251,250	463,755	1,805,436	1,068,501	3,588,942
PINNACLE DOWNS	34,171	32,548	152,188	54,175	273,082
PLAINRIDGE		178,857	450,698	81,059	710,614
POCONO	89,811	778,106	1,851,556	210,821	2,930,294
POMPANO	39,527	238,108	810,359	84,094	1,172,088
PORTLAND MEADOWS	52,920	171,219	835,893	230,679	1,290,711
PRAIRE MEADOWS		54,742	393,811	147,018	595,571
PREMIER PICK 4-OAK	15,807				15,807
PRESQUE ISLE DOWNS	63,499	141,222	481,242	330,538	1,016,501
PRIX D'AMERIQUE			1,136		1,136
RACEWAY PARK		34,233			34,233
RED MILE		150,498	307,376	31,052	488,926
REMMINGTON	41,000	152,272	578,083	195,383	966,738
RETAMA PARK	37,618	222,192	1,516,359	269,177	2,045,346
RIVERDOWN	36,219	62,714	205,751	111,747	416,431
ROCKINGHAM		165,329	260,261	65,430	491,020
RUNNING ACRES		12,433	33,779	4,600	50,812
SAM HOUSTON	10,287	46,436	240,180	50,734	347,637
SANTA ANITA	354,425	1,720,715	6,774,737	2,020,176	10,870,053
SARATOGA	636,635	1,918,949	6,912,677	7,462,318	16,930,579
SCIOTO DOWNS	1,084	15,088	42,629	4,159	62,960
SOUTH AFRICAN RACE			50,108	16,643	66,751
SUFFOLK DOWNS	244,152	524,059	1,806,462	979,869	3,554,542
SUNLAND PARK	50,128	277,445	1,078,134	336,120	1,741,827
SWEDISH RACING		5,038	31,332	7,496	43,866
TAMPA BAY	647,850	2,163,912	6,979,883	3,182,162	12,973,807
THISTLEDOWN	240,105	582,029	2,175,606	823,041	3,820,781
TIMINIUM	10,725	15,459	53,449	35,706	115,339
TIOGA DOWNS		97,149	268,002	63,495	428,646
TROPICAL	184,388	584,862	1,637,572	979,625	3,386,447
TURF PARADISE	200,731	635,193	2,643,868	875,972	4,355,764
TURFWAY	310,519	774,713	3,265,777	1,203,335	5,554,344
VERNON DOWNS		57,355	107,441	14,724	179,520
WESTERN FAIR RACEWAY	4,442	143,915	525,739	93,867	767,963
WINDSOR	13,051	139,967	390,693	28,934	572,645
WOODBINE	539,258	1,600,702	7,734,173	2,560,633	12,434,766
YAVAPAI		45,740			45,740
YONKERS	262,933	2,757,493	8,956,770	635,005	12,612,201
ZIA PARK	30,068	70,884	54,261	17,522	172,735
<i>Total 2009</i>	<i>\$17,221,690</i>	<i>\$58,066,076</i>	<i>\$217,100,851</i>	<i>\$88,734,806</i>	<i>381,123,423</i>

**NEW JERSEY LIVE AND SIMULCASTING MEETS  
COMMISSION DISTRIBUTION SUMMARY  
2 0 0 9**

NJ-TRACKS	RACE DAY	NJ-GROSS HANDLE	POSITIVE BREAKAGE	TRACK SETTLEMENT	PAYOUT	TOTAL COMMISSION	TRACK SHARE	PURSE SHARE	STATE SETTLE	CHARITY	SIRE STAKES (HARNESS)	BREED/DEVLP (HARNESS)	BREED/STALL (HARNESS)	BREED/DEVLP (T-BRED)	T. B. A. (T-BRED)	BACKSTRETCH BENEVOLENCE	S.B.O.A. BENEFIT	HEADTAX	WORKERS COMP
<b>T-BRED</b>																			
A C R A	6	980,025	5,422	23,328	760,528	190,747	108,078	68,874	0	4,334	0	0	0	490	8,956	0	0	0	28,340
M D L S	47	8,018,855	44,054	159,834	6,279,492	1,538,048	1,078,878	427,144	0	6,097	0	0	0	4,009	21,240	680	0	0	460,465
M P	93	47,286,796	300,192	1,823,850	36,043,464	9,156,879	6,544,935	2,443,108	0	28,690	0	0	0	23,643	112,348	4,155	0	0	757,640
<b>SUB-TOTAL (T)</b>	<b>146</b>	<b>\$56,285,676</b>	<b>\$349,669</b>	<b>\$2,007,012</b>	<b>\$43,083,484</b>	<b>\$10,885,673</b>	<b>\$7,731,890</b>	<b>\$2,939,127</b>	<b>\$0</b>	<b>\$39,120</b>	<b>\$0</b>	<b>\$0</b>	<b>\$0</b>	<b>\$28,143</b>	<b>\$142,543</b>	<b>\$4,835</b>	<b>\$0</b>	<b>\$0</b>	<b>\$1,246,445</b>
<b>HARNESS</b>																			
A C H I	96	\$9,664,794	\$52,318	\$0	\$7,763,910	\$2,034,206	\$960,213	\$986,291	\$0	\$4,859	\$62,868	\$3,334	\$5,557	\$0	\$0	\$869	\$10,214	\$0	\$0
F R A	78	7,341,485	41,371	(28,850)	5,786,878	1,543,973	728,728	748,561	0	2,976	47,752	2,533	4,221	0	0	658	7,737	0	0
M D L S	147	52,660,354	250,389	0	40,424,588	10,401,151	6,626,453	3,378,608	0	22,154	267,682	15,798	28,963	0	0	4,823	56,670	0	0
<b>SUB-TOTAL (H)</b>	<b>321</b>	<b>\$69,666,633</b>	<b>\$344,078</b>	<b>\$0</b>	<b>\$53,975,377</b>	<b>\$13,979,329</b>	<b>\$8,315,393</b>	<b>\$5,113,459</b>	<b>\$0</b>	<b>\$29,989</b>	<b>\$378,302</b>	<b>\$21,665</b>	<b>\$38,742</b>	<b>\$0</b>	<b>\$0</b>	<b>\$6,351</b>	<b>\$74,621</b>	<b>\$0</b>	<b>\$0</b>
<b>TOTAL LIVE-2009</b>	<b>467</b>	<b>\$125,952,308</b>	<b>\$693,747</b>	<b>\$2,007,012</b>	<b>\$97,058,860</b>	<b>\$24,865,003</b>	<b>\$16,047,284</b>	<b>\$8,052,586</b>	<b>\$0</b>	<b>\$69,109</b>	<b>\$378,302</b>	<b>\$21,665</b>	<b>\$38,742</b>	<b>\$28,143</b>	<b>\$142,543</b>	<b>\$11,186</b>	<b>\$74,621</b>	<b>\$0</b>	<b>\$1,246,445</b>
<b>OUT-OF-STATE HANDLE RECEIVED</b>																			
A C R A (T)	6,333	17,221,786	82,574	0	13,577,660	3,519,503	2,754,502	668,559	0	0	0	0	0	5,167	89,553	1,722	0	0	0
M D L S (T)	2,118	53,474,724	229,853	1,188,164	40,832,367	11,255,828	7,802,478	3,153,891	0	0	0	0	0	16,043	278,068	5,348	0	0	0
M P (T)	7,175	88,734,805	417,169	717,958	69,887,138	17,976,119	12,779,908	4,699,297	0	0	0	0	0	26,621	461,421	8,873	0	0	0
<b>SUB-TOT (T)</b>	<b>15,626</b>	<b>159,431,315</b>	<b>729,596</b>	<b>1,906,122</b>	<b>124,297,166</b>	<b>32,751,450</b>	<b>23,336,888</b>	<b>8,521,747</b>	<b>0</b>	<b>0</b>	<b>0</b>	<b>0</b>	<b>0</b>	<b>47,830</b>	<b>829,043</b>	<b>15,943</b>	<b>0</b>	<b>0</b>	<b>0</b>
A C H I (H)	3,385	29,253,359	116,277	16,750	22,953,458	6,175,130	4,508,632	1,524,100	0	0	88,785	8,776	7,540	0	0	2,925	34,373	0	0
F R A (H)	5,045	28,812,714	109,801	577,672	21,970,873	6,166,206	4,679,099	1,346,852	0	0	87,448	8,644	7,427	0	0	2,882	33,855	0	0
M D L S (H)	5,364	163,626,123	718,797	2,873,926	125,948,434	34,207,183	23,608,362	9,848,711	0	0	446,009	49,088	46,390	0	0	16,362	192,261	0	0
<b>SUB-TOT (H)</b>	<b>13,794</b>	<b>221,692,196</b>	<b>944,875</b>	<b>3,468,347</b>	<b>170,872,764</b>	<b>46,548,519</b>	<b>32,796,093</b>	<b>12,719,663</b>	<b>0</b>	<b>0</b>	<b>622,242</b>	<b>66,508</b>	<b>61,356</b>	<b>0</b>	<b>0</b>	<b>22,169</b>	<b>260,488</b>	<b>0</b>	<b>0</b>
<b>TOTAL SIGNAL</b>	<b>29,420</b>	<b>\$381,123,510</b>	<b>\$1,674,471</b>	<b>\$5,374,469</b>	<b>\$295,169,930</b>	<b>\$79,299,969</b>	<b>\$56,132,980</b>	<b>\$21,241,410</b>	<b>\$0</b>	<b>\$0</b>	<b>\$622,242</b>	<b>\$66,508</b>	<b>\$61,356</b>	<b>\$47,830</b>	<b>\$829,043</b>	<b>\$38,112</b>	<b>\$260,488</b>	<b>\$0</b>	<b>\$0</b>
<b>TOTAL - 2009</b>	<b>29,887</b>	<b>\$507,075,819</b>	<b>\$2,368,218</b>	<b>\$7,381,482</b>	<b>\$392,228,790</b>	<b>\$104,164,972</b>	<b>\$72,180,264</b>	<b>\$29,293,995</b>	<b>\$0</b>	<b>\$69,109</b>	<b>\$1,000,544</b>	<b>\$88,173</b>	<b>\$100,098</b>	<b>\$75,973</b>	<b>\$971,586</b>	<b>\$49,298</b>	<b>\$335,109</b>	<b>\$0</b>	<b>\$1,246,445</b>

Figures thru: DECEMBER 31

## 2009 CHARITY DAYS' REVENUE

TRACK / DATE	BACKSTRECH BENEVOLENCE	DEVEPMENTALLY DISABLED	HORSE PARK OF NEW JERSEY	T O T A L C H A R I T Y
<b><u>A.C. Harness, Inc.</u></b>				
07-Mar-09	994.57			994.57
21-Mar-09			965.20	965.20
28-Mar-09		851.92		851.92
04-Apr-08		867.51		867.51
02-May-08		1,180.15		1,180.15
<b>SUB-TOTAL</b>	<b>\$994.57</b>	<b>\$2,899.58</b>	<b>\$965.20</b>	<b>\$4,859.35</b>
<b><u>Atlantic City Racing</u></b>				
17-Apr-09		905.58		905.58
23-Apr-09			696.81	696.81
24-Apr-09		910.56		910.56
30-Apr-09		882.41		882.41
01-May-09	938.15			938.15
<b>SUB-TOTAL</b>	<b>\$938.15</b>	<b>\$2,698.55</b>	<b>\$696.81</b>	<b>\$4,333.51</b>
<b><u>Freehold Raceway</u></b>				
07-Sep-09	781.91			781.91
10-Oct-09			661.65	661.65
17-Oct-09		833.31		833.31
24-Oct-09		699.08		699.08
14-Nov-09		0.00		0.00
<b>SUB-TOTAL</b>	<b>\$781.91</b>	<b>\$1,532.39</b>	<b>\$661.65</b>	<b>\$2,975.95</b>
<b><u>Meadowlands (H)</u></b>				
02-May-09			2,981.07	2,981.07
16-May-09		3,041.00		3,041.00
18-Jul-09		4,451.43		4,451.43
08-Aug-09	10,629.28			10,629.28
21-Aug-09		1,051.21		1,051.21
<b>SUB-TOTAL</b>	<b>\$10,629.28</b>	<b>\$8,543.64</b>	<b>\$2,981.07</b>	<b>\$22,153.99</b>
<b><u>Meadowlands (T)</u></b>				
02-Oct-09	1,166.16			1,166.16
03-Oct-09			1,569.42	1,569.42
09-Oct-09		697.89		697.89
10-Oct-09		1,410.42		1,410.42
16-Oct-09		1,252.86		1,252.86
<b>SUB-TOTAL</b>	<b>\$1,166.16</b>	<b>\$3,361.17</b>	<b>\$1,569.42</b>	<b>\$6,096.75</b>
<b><u>Monmouth Park</u></b>				
23-May-09		4,105.73		4,105.73
24-May-09			3,471.48	3,471.48
04-Jul-09		5,226.95		5,226.95
02-Aug-09	13,531.70			13,531.70
12-Sep-09		2,353.72		2,353.72
<b>SUB-TOTAL</b>	<b>\$13,531.70</b>	<b>\$11,686.40</b>	<b>\$3,471.48</b>	<b>\$28,689.58</b>
<b>CHARITY thru 1:</b>	<b>\$28,041.77</b>	<b>\$30,721.73</b>	<b>\$10,345.63</b>	<b>\$69,109.13</b>



**New Jersey Racing Commission  
On-Track Handle & Attendance  
2009**

Meets	Racing Dates	Handle	Average Daily Handle	Attendance	Average Daily Attendance
<b>THOROUGHBRED</b>					
Atlantic City Racing Assoc.	6	\$771,243	\$128,541	25,673	4,279
Meadowlands	47	6,550,773	139,378	106,933	2,275
Monmouth Park Jockey Club	93	38,072,743	409,384	650,612	6,996
<b>THOROUGHBRED TOTALS</b>	146	\$45,394,759		783,218	
<b>HARNESS</b>					
Atlantic City Harness, Inc.	96	\$6,540,938	\$68,135	113,971	1,187
Freehold Raceway	78	4,944,589	63,392	87,264	1,119
Meadowlands	147	45,823,443	311,724	427,334	2,907
<b>HARNESS TOTALS</b>	321	\$57,308,970		628,569	
<b>Total On-track</b>	467	\$102,703,729			
<b>Total NJ Track Simulcasting</b>		\$29,362,368			
<b>Gross New Jersey Track Handle</b>		\$132,066,097			
			<b>Total On-Track Attendance</b>	1,411,787	

**New Jersey Racing Commission  
Inter-State Wagering  
2009**

<b>Meet</b>	<b>Racing Dates</b>	<b>Handle</b>
<b>THOROUGHBRED</b>		
Monmouth Park Jockey Club	93	\$88,734,805
Atlantic City Racing Assoc.	6	17,221,786
Meadowlands	47	53,474,724
Garden State Park	0	0
<b>Sub-Total Thoroughbred Tracks</b>	146	<b>\$159,431,315</b>
<b>HARNESS</b>		
Atlantic City Harness, Inc.	96	29,253,359
Freehold Raceway	78	28,812,714
Garden State Park	0	0
Meadowlands	147	163,626,123
<b>Sub-Total Harness Tracks</b>	321	<b>\$221,692,196</b>
<b>Total Inter-State Wagering</b>	<b>467</b>	<b>\$381,123,511</b>

**New Jersey Racing Commission  
Account Wagering  
In State  
1/01/09 through 12/31/09**

	<u>Internet</u>	<u>Phone</u>	<u>OTW Facilities</u>	<u>Total</u>
Purse Share:				
Thoroughbred	270,668	42,972	423,233	736,874
Standardbred	467,881	68,812	721,256	1,257,949
Breeder & Development:				
Thoroughbred	902	143	1,411	2,456
Standardbred	1,495	220	2,307	4,022
Sire Stakes Programs	25,609	3,750	39,956	69,315
TBA	29,773	4,727	26,971	61,472
SBOA Health Benefits	4,486	660	4,441	9,587
Backstretch Benevolence	2,398	363	2,298	5,059
Breakage	61,270	12,180	55,054	128,504
Amount Returned to Patrons	9,577,735	1,456,385	9,150,496	20,184,616
State Settlement	0	0	0	0
Cost of Signal	0	0	0	0
Account Wagering Licensee	1,546,032	225,419	2,454,332	4,225,783
Total Pari-Mutuel Handle	<u>11,988,249</u>	<u>1,815,632</u>	<u>18,587,415</u>	<u>32,391,296</u>

**New Jersey Racing Commission  
Account Wagering  
Out of State  
1/01/09 through 12/31/09**

	<u>Internet</u>	<u>Phone</u>	<u>OTW Facilities</u>	<u>Total</u>
MDLS for Thoroughbred Overnight Purses and for programs to aid the Thoroughbred Horsemen	686,447	81,213	1,574,292	2,341,952
MP for Thoroughbred Overnight Purses and for programs to aid the Thoroughbred Horsemen	2,094,233	186,822	3,621,488	5,902,544
ACRA for Thoroughbred Overnight Purses and for programs to aid the Thoroughbred Horsemen	58,356	4,492	87,076	149,924
MDLS for Standardbred Overnight Purses and for programs to aid the Standardbred Horsemen	1,180,300	107,968	2,092,924	3,381,192
FRA for Standardbred Overnight Purses and for programs to aid the Standardbred Horsemen	348,412	38,778	751,691	1,138,880
Standardbred Breeders and Owners Association (SBOA) for Standardbred Health & Welfare	13,293	1,276	24,736	39,305
Thoroughbred Breeders and Stallions (TBA)	232,060	22,276	431,816	686,153
Thoroughbred Backstretch Benevolency	7,406	711	13,781	21,898
Thoroughbred Breeding and Development	7,406	711	13,781	21,898
Sire Stakes	99,699	9,570	185,518	294,787
Standardbred Breeders and Stallions	10,635	1,021	19,789	31,444
Standardbred Backstretch Benevolency	4,653	447	8,658	13,757
Standardbred Breeding and Development	4,653	447	8,658	13,757
Total New Jersey Racing Industry Special Fund	<u>4,747,552</u>	<u>455,731</u>	<u>8,834,208</u>	<u>14,037,491</u>
Breakage	280,320	43,208	586,261	909,790
Amount Returned to Patrons	56,408,764	5,910,198	107,132,956	169,451,918
State Settlement	134	115	1,182	1,431
Cost of Signal	2,732,129	291,044	4,550,473	7,573,645
Account Wagering Licensee	7,121,330	683,598	13,251,314	21,056,241
Total Pari-Mutuel Handle	<u>71,290,229</u>	<u>7,383,893</u>	<u>128,650,734</u>	<u>207,324,856</u>

**New Jersey Racing Commission**  
**Account Wagering**  
**In & Out of State**  
**1/01/09 through 12/31/09**

	<u>Internet</u>	<u>Phone</u>	<u>OTW Facilities</u>	<u>Total</u>
MDLS for Thoroughbred Overnight Purses and for programs to aid the Thoroughbred Horsemen	686,447	81,213	1,574,292	2,341,952
MP for Thoroughbred Overnight Purses and for programs to aid the Thoroughbred Horsemen	2,094,233	186,822	3,621,488	5,902,544
ACRA for Thoroughbred Overnight Purses and for programs to aid the Thoroughbred Horsemen	58,356	4,492	87,076	149,924
MDLS for Standardbred Overnight Purses and for programs to aid the Standardbred Horsemen	1,180,300	107,968	2,092,924	3,381,192
FRA for Standardbred Overnight Purses and for programs to aid the Standardbred Horsemen	348,412	38,778	751,691	1,138,880
Standardbred Breeders and Owners Association (SBOA) for Standardbred Health & Welfare	13,293	1,276	24,736	39,305
Thoroughbred Breeders and Stallions (TBA)	232,060	22,276	431,816	686,153
Thoroughbred Backstretch Benevolency	7,406	711	13,781	21,898
Thoroughbred Breeding and Development	7,406	711	13,781	21,898
Sire Stakes	99,699	9,570	185,518	294,787
Standardbred Breeders and Stallions	10,635	1,021	19,789	31,444
Standardbred Backstretch Benevolency	4,653	447	8,658	13,757
Standardbred Breeding and Development	4,653	447	8,658	13,757
Total New Jersey Racing Industry Special Fund	4,747,552	455,731	8,834,208	14,037,491
Purse Share:				
Thoroughbred	270,668	42,972	423,233	736,874
Standardbred	467,881	68,812	721,256	1,257,949
Breeder & Development:				
Thoroughbred	902	143	1,411	2,456
Standardbred	1,495	220	2,307	4,022
Sire Stakes Programs	25,609	3,750	39,956	69,315
TBA	29,773	4,727	26,971	61,472
SBOA Health Benefits	4,486	660	4,441	9,587
Backstretch Benevolence	2,398	363	2,298	5,059
Breakage	341,590	55,388	641,315	1,038,294
Amount Returned to Patrons	65,986,499	7,366,583	116,283,452	189,636,534
State Settlement	134	115	1,182	1,431
Cost of Signal	2,732,129	291,044	4,550,473	7,573,645
Account Wagering Licensee	8,667,362	909,017	15,705,645	25,282,024
Total Pari-Mutuel Handle	<u>83,278,478</u>	<u>9,199,525</u>	<u>147,238,149</u>	<u>239,716,152</u>

INFORMATION THE ANNUAL REPORT  
 New Jersey Racing Commission  
 Summary of Pari-Mutuel Activity  
 Atlantic City Casinos  
 1/1/09 through 12/31/09

Host Track	Trump							
	Showboat	Taj Mahal	Caesar's	Bally's Park Place	Tropicana	Botgata	Harrah's	Hub Total
New Jersey Signals Received								
Atlantic City Racing Association		6,813	8,345	10,214	4,532	18,051	4,684	56,958
Atlantic City Harness, Inc.	37,861	94,666	71,122	110,108	37,569	169,054	42,297	562,677
Freehold	33,779	67,758	48,509	81,212	31,293	112,261	34,633	409,445
Meadowlands - Harness	239,577	398,685	342,081	522,475	227,512	1,181,057	280,506	3,191,893
Meadowlands - Thoroughbred	52,360	68,988	65,159	100,991	48,247	237,396	57,016	630,157
Monmouth Park - Thoroughbred	165,717	225,711	336,393	481,551	222,196	1,120,789	220,598	2,772,955
Total N.J. Signals Received	533,613	862,621	871,609	1,306,551	571,349	2,838,608	639,734	7,624,085
Out-of-State Signals Received								
Aqueduct	412,830	737,559	751,037	1,091,367	465,192	2,396,399	520,657	6,375,041
Arlington	116,068	135,639	229,028	271,085	118,757	760,643	120,874	1,752,094
Balmoral	25,598	187,407	94,737	258,918	104,955	437,455	101,215	1,210,285
Belmont Park	445,906	614,139	801,724	1,085,574	506,106	2,673,019	598,741	6,725,209
Beulah	58,183	77,829	94,129	135,587	64,325	199,009	45,324	674,386
Cal-Expo	0	0	0	0	7,813	191,712	20,664	220,189
Calder	106,531	143,680	195,588	258,225	131,938	503,644	114,202	1,453,808
Canterbury Park	333	6,793	11,614	10,870	4,979	25,894	6,514	66,997
Charlestown	151,585	245,817	237,606	329,382	140,563	620,685	125,266	1,850,904
Chester Downs	84,517	119,507	118,031	160,160	63,898	324,958	81,829	952,900
Churchill Downs	132,723	182,038	319,609	440,853	184,694	1,178,514	213,687	2,652,118
Colonial Downs	31,250	35,012	53,553	79,607	29,396	149,869	35,243	413,930
Del Mar	76,414	81,104	113,992	138,904	88,885	550,623	89,366	1,139,288
Delaware Park	145,291	151,325	238,693	336,014	143,281	549,756	133,897	1,698,257
Delta Downs	0	85,909	81,295	136,581	49,384	271,416	52,142	676,727
Dover Downs	59,276	138,853	123,296	182,723	68,794	285,478	73,386	931,806
Ellis Park	15,384	23,914	35,045	49,890	17,003	82,625	17,206	241,067
Emerald Downs	0	37,416	8,822	69,914	31,916	147,359	30,336	325,763
Evangeline	0	96,629	92,535	176,634	69,482	293,324	61,514	790,118
Fair Grounds	93,903	155,670	224,463	248,411	83,779	583,370	100,433	1,490,029
Fairplex	13,579	10,606	15,621	24,109	7,738	75,300	9,413	156,366
Finger Lakes	99,966	120,962	202,777	264,759	118,639	391,195	87,349	1,285,647
Golden Gate	106,087	152,412	157,821	244,260	76,334	468,573	83,512	1,288,999
Gulfstream	181,180	265,904	374,937	445,762	209,478	1,266,833	222,504	2,966,598
Harrington Raceway	35,562	70,853	57,255	88,649	41,846	160,483	41,544	496,192
Hawthorne T	64,672	109,179	138,825	170,768	75,202	343,280	68,116	970,042
Hazel Park	0	12,469	13,624	18,661	9,738	31,379	11,786	97,657
Hialeah	0	1,306	4,048	2,716	301	5,062	654	14,087
Hollywood Park	117,003	127,496	174,188	265,335	113,506	791,479	146,977	1,735,984
Hoosier Park	0	60,759	73,504	106,284	39,777	155,771	38,622	474,717
Kenneland	61,227	69,891	140,456	169,350	58,874	473,066	72,990	1,045,854
Kentucky Downs	0	1,138	975	1,703	1,420	4,478	811	10,525
Laurel	86,182	136,049	170,258	229,390	98,694	490,311	98,305	1,309,189
Little Brown Jug	0	517	1,002	513	198	1,707	182	4,119
Lone Star	0	44,922	63,806	75,390	29,228	128,757	22,491	364,594
Los Alamitos	0	0	0	0	28,288	221,181	31,031	280,500
Louisiana Downs	70,226	83,082	125,626	143,521	61,991	279,904	45,253	809,603
Maywood	0	98,935	66,672	122,779	49,984	224,323	58,058	620,751
Meadows	62,397	106,074	98,723	143,744	63,114	214,564	56,752	745,368
Monticello Raceway H	100,678	156,242	175,120	261,431	108,079	344,015	87,282	1,232,847
Mountaineer	148,175	254,607	203,236	403,296	193,691	699,127	192,334	2,094,466
Northfield	134,162	290,699	196,886	429,768	154,369	528,327	157,818	1,892,029
Oaklawn	47,573	70,860	113,505	116,992	38,512	235,898	43,735	667,075
Ocean Downs	0	9,984	5,924	13,065	6,659	19,257	5,771	60,660
Penn National	157,902	189,139	214,154	301,770	156,877	666,308	147,401	1,833,551
Philadelphia Park	283,462	329,554	443,975	724,319	322,844	1,065,352	313,800	3,483,306
Pimlico	52,249	77,504	100,104	124,882	69,820	327,439	60,490	812,488
Pinnacle Downs	0	17,505	26,840	44,039	12,275	50,883	12,433	163,975
Pocono Downs	25,825	48,134	57,040	65,466	28,275	126,580	33,195	384,515
Pompano	25,843	47,034	48,525	56,873	25,704	99,642	32,074	335,695
Presque Isle Downs	23,628	28,662	32,846	54,492	25,373	146,149	25,254	336,404
Portland Meadows	11,840	40,534	37,035	57,039	23,058	96,174	21,578	287,258
Raceway Park	0	7,537	3,040	8,896	3,960	15,690	5,032	44,155
Remington Park	2	38,145	41,297	58,822	23,685	116,821	25,518	304,290
Retama Park	6,116	25,597	30,088	42,372	19,963	85,085	18,859	228,080
Riverdowns	11,094	20,855	21,463	32,527	17,628	46,046	11,399	161,012
Running Acres	0	4,589	2,248	4,472	2,466	7,210	1,705	22,690
Sam Houston	0	28,573	25,732	29,607	12,456	55,955	15,842	168,165
Santa Anita	210,169	314,972	375,599	536,637	202,031	1,566,559	236,037	3,442,004
Saratoga	211,397	334,691	379,799	559,042	298,185	1,491,491	332,977	3,607,582
Scioto Downs	0	3,647	5,219	6,050	3,073	9,291	1,990	29,270
Suffolk	66,104	77,614	120,780	163,962	75,748	245,074	55,704	804,986
Tampa Bay Downs	146,516	239,945	304,037	402,025	175,938	796,464	149,589	2,214,514
Thistledown	84,879	114,159	134,528	196,286	101,064	307,378	64,693	1,002,987
Timonium	1,876	3,647	3,904	6,414	3,556	8,881	2,216	30,494
Tropical	54,330	68,494	112,224	111,701	53,722	260,844	65,174	726,489
Turf Paradise	90,527	147,259	152,559	194,428	79,786	304,188	74,493	1,043,241
Turfway	70,759	108,914	158,143	172,398	74,555	363,882	87,796	1,036,447
Vernon Downs	0	2,044	1,959	3,767	818	4,591	905	14,084
Yonkers	182,819	327,044	291,738	357,495	194,643	790,186	219,888	2,363,813
Zia Park	0	16,063	18,574	27,332	8,841	27,055	7,801	105,666
Total Out-of-State Signals Received	5,001,798	8,173,041	9,543,036	13,546,056	5,977,144	28,861,240	6,149,629	77,251,944
Total Pari-Mutuel Activity	5,535,411	9,035,662	10,414,645	14,852,607	6,548,493	31,699,848	6,789,363	84,876,029

New Jersey Racing Commission  
Pari-Mutuel Takeout  
Atlantic City Casinos  
In-State Simulcasting  
1/1/09 through 12/31/09

	Showboat	Trump Taj Mahal	Caesar's	Bally's Park Place	Tropicana	Botgata	Harrah's	Hub Total
Racing Days								
Casino Simulcasting Fund	2,669.19	4,314.33	4,359.18	6,533.88	2,857.88	14,194.19	3,199.86	38,128.51
Casino - Placement of Signal	0.00	0.00	0.00	0.00	0.00	0.00	0.00	0.00
A.C.R.A. Contingency Fund - State	0.00	0.00	0.00	0.00	0.00	0.00	0.00	0.00
Casino Share	52,750.37	82,934.72	84,170.51	127,773.27	55,747.86	277,989.68	62,319.53	743,685.94
Special Trust - Harness								
Sire Stakes	808.04	1,467.18	1,202.94	1,861.63	769.64	3,779.66	926.41	10,815.50
Track Purses	661.12	1,182.63	976.99	1,508.66	629.46	3,122.41	760.86	8,842.13
Breeder & Stallion Awards	86.90	155.81	128.64	198.64	82.75	409.73	99.99	1,162.46
Special Trust - Thoroughbred								
Thoroughbred Breeders	1,112.36	1,507.94	2,049.81	2,964.17	1,375.21	6,881.55	1,411.88	17,302.92
Breeding & Development								
Harness	93.38	168.38	138.53	214.13	88.92	438.73	107.16	1,249.23
Thoroughbred	66.77	90.48	123.03	177.80	82.52	412.83	84.68	1,038.11
Purse Allocation								
In State	24,039.18	38,006.39	38,930.50	59,337.46	25,760.52	127,018.71	28,574.40	341,667.16
Out of State								
Track Share Allocation								
In State	23,925.26	37,887.21	38,862.30	59,190.03	25,626.35	125,582.73	28,463.89	339,537.77
Out of State	0.00	0.00	0.00	0.00	0.00	0.00	0.00	0.00
Casino Simulcasting Special Fund	0.00	0.00	0.00	0.00	0.00	0.00	0.00	0.00
Total Commissions	106,212.57	167,715.07	170,942.43	259,759.67	113,021.11	559,830.22	125,948.66	1,503,429.73
Breakage	3,000.60	5,803.25	5,770.48	8,374.31	3,717.68	16,788.63	3,522.08	46,977.03
Total Amount Distributed	109,213.17	173,518.32	176,712.91	268,133.98	116,738.79	576,618.85	129,470.74	1,420,936.02
Amount Returned to Patron	424,399.83	689,102.68	694,896.09	1,038,417.02	454,610.21	2,261,989.15	510,263.66	6,073,678.64
Total Pari-Mutuel Handle	<u>533,613.00</u>	<u>862,621.00</u>	<u>871,609.00</u>	<u>1,306,551.00</u>	<u>571,349.00</u>	<u>2,838,608.00</u>	<u>639,734.40</u>	<u>7,624,085.40</u>

New Jersey Racing Commission  
Pari-Mutuel Takeout  
Atlantic City Casinos  
Out-of-State Simulcasting  
1/1/09 through 12/31/09

Racing Days	Showboat	Trump Taj Mahal	Caesar's	Bally's Park Place	Tropicana	Botgata	Harrah's	Hub Total
Casino Simulcasting Fund	25,021.66	40,881.58	47,730.95	67,746.74	29,902.00	144,323.07	30,763.46	386,369.46
Casino - Placement of Signal	154,010.35	250,974.18	294,652.47	417,237.22	185,382.87	893,172.18	190,395.86	2,385,825.13
A.C.R.A. Contingency Fund - State								
Casino Share	423,767.83	679,030.75	796,332.77	1,139,253.99	506,384.28	2,424,293.38	508,741.53	6,477,804.53
Sire Stakes	7,090.15	11,585.37	13,527.46	19,202.16	8,472.98	40,911.20	8,717.03	109,506.35
Track Purses	4,763.93	7,784.53	9,089.28	12,902.54	5,692.72	27,490.29	5,856.76	73,580.05
Breeder & Stallion Awards	650.40	1,062.59	1,240.35	1,761.00	777.07	3,751.78	799.24	10,042.43
Special Trust - Thoroughbred								
Thoroughbred Breeders	12,510.75	20,440.88	23,865.70	33,873.29	14,951.58	72,161.73	15,382.26	193,186.19
Breeding & Development								
Harness	750.11	1,225.93	1,431.38	2,031.95	896.63	4,329.05	922.44	11,587.49
Thoroughbred	750.11	1,225.93	1,431.38	2,031.95	896.63	4,329.05	922.44	11,587.49
Purse Allocation								
In State	0.00	0.00	0.00	0.00	0.00	0.00	0.00	0.00
Out of State	170,808.04	273,339.39	320,657.76	458,990.08	204,105.49	976,653.27	204,726.40	2,609,280.43
Track Share allocation								
In State	0.00	0.00	0.00	0.00	0.00	0.00	0.00	0.00
Out of State	170,807.41	273,337.62	320,656.94	458,989.02	204,104.50	976,652.51	204,725.66	2,609,273.66
Casino Simulcasting Special Fund	55,612.25	88,995.00	104,400.58	149,439.12	66,453.49	317,980.81	66,655.28	849,536.53
Total Commissions	<u>1,026,542.99</u>	<u>1,649,883.75</u>	<u>1,935,017.02</u>	<u>2,763,459.06</u>	<u>1,228,020.24</u>	<u>5,886,048.32</u>	<u>1,238,608.36</u>	<u>15,727,579.74</u>
Breakage	24,945.49	43,994.24	53,324.65	69,787.59	30,381.99	137,673.42	30,704.52	390,811.90
Total Amount Distributed	<u>1,051,488.48</u>	<u>1,693,877.99</u>	<u>1,988,341.67</u>	<u>2,833,246.65</u>	<u>1,258,402.23</u>	<u>6,023,721.74</u>	<u>1,269,312.88</u>	<u>16,247,862.38</u>
Amount Returned to Patron	3,950,309.72	6,479,162.81	7,554,694.13	10,712,809.65	4,718,741.77	22,837,518.06	4,880,316.42	61,133,552.56
Total Pari-Mutuel Handle	<u><u>5,001,798.20</u></u>	<u><u>8,173,040.80</u></u>	<u><u>9,543,035.80</u></u>	<u><u>13,546,056.30</u></u>	<u><u>5,977,144.00</u></u>	<u><u>28,861,239.80</u></u>	<u><u>6,149,629.30</u></u>	<u><u>77,251,944.20</u></u>



New Jersey Racing Commission  
Pari-Mutuel Takeout  
Atlantic City Casinos  
In-State & Out-of-State Simulcasting  
1/1/09 through 12/31/09

	Showboat	Trump Taj Mahal	Caesar's	Bally's Park Place	Tropicana	Botgata	Harrah's	Hub Total
Racing Days								
Casino Simulcasting Fund	27,690.85	45,195.91	52,090.13	74,280.62	32,759.88	158,517.26	33,963.32	424,497.97
Casino - Placement of Signal	154,010.35	250,974.18	294,652.47	417,237.22	185,382.87	893,172.18	190,395.86	2,385,825.13
A.C.R.A. Contingency Fund - State								
Casino Share	476,518.20	761,965.47	880,503.28	1,267,027.26	562,132.14	2,702,283.06	571,061.06	7,221,490.47
Special Trust - Harness								
Sire Stakes	7,898.19	13,052.55	14,730.40	21,063.79	9,242.62	44,690.86	9,643.44	120,321.85
Track Purses	5,425.05	8,967.16	10,066.27	14,411.20	6,322.18	30,612.70	6,617.62	82,422.18
Breeder & Stallion Awards	737.30	1,218.40	1,368.99	1,959.64	859.82	4,161.51	899.23	11,204.89
Special Trust - Thoroughbred								
Thoroughbred Breeders	13,623.11	21,948.82	25,915.51	36,837.46	16,326.79	79,043.28	16,794.14	210,489.11
Breeding & Development								
Harness	843.49	1,394.31	1,569.91	2,246.08	985.55	4,767.78	1,029.60	12,836.72
Thoroughbred	816.88	1,316.41	1,554.41	2,209.75	979.15	4,741.88	1,007.12	12,625.60
Purse Allocation								
In State	24,039.18	38,006.39	38,930.50	59,337.46	25,760.52	127,018.71	28,574.40	341,667.16
Out of State	170,808.04	273,339.39	320,657.76	458,990.08	204,105.49	976,653.27	204,726.40	2,609,280.43
Track Share allocation								
In State	23,925.26	37,887.21	38,862.30	59,190.03	25,626.35	125,582.73	28,463.89	339,537.77
Out of State	170,807.41	273,337.62	320,656.94	458,989.02	204,104.50	976,652.51	204,725.66	2,609,273.66
Casino Simulcasting Special Fund	<u>55,612.25</u>	<u>88,995.00</u>	<u>104,400.58</u>	<u>149,439.12</u>	<u>66,453.49</u>	<u>317,980.81</u>	<u>66,655.28</u>	<u>849,536.53</u>
Total Commissions	<u>1,132,755.56</u>	<u>1,817,598.82</u>	<u>2,105,959.45</u>	<u>3,023,218.73</u>	<u>1,341,041.35</u>	<u>6,445,878.54</u>	<u>1,364,557.02</u>	<u>17,231,009.47</u>
Breakage	<u>27,946.09</u>	<u>49,797.49</u>	<u>59,095.13</u>	<u>78,161.90</u>	<u>34,099.67</u>	<u>154,462.05</u>	<u>34,226.60</u>	<u>437,788.93</u>
Total Amount Distributed	<u>1,160,701.65</u>	<u>1,867,396.31</u>	<u>2,165,054.58</u>	<u>3,101,380.63</u>	<u>1,375,141.02</u>	<u>6,600,340.59</u>	<u>1,398,783.62</u>	<u>17,668,798.40</u>
Amount Returned to Patron	<u>4,374,709.55</u>	<u>7,168,265.49</u>	<u>8,249,590.22</u>	<u>11,751,226.67</u>	<u>5,173,351.98</u>	<u>25,099,507.21</u>	<u>5,390,580.08</u>	<u>67,207,231.20</u>
Total Pari-Mutuel Handle	<u><u>5,535,411.20</u></u>	<u><u>9,035,661.80</u></u>	<u><u>10,414,644.80</u></u>	<u><u>14,852,607.30</u></u>	<u><u>6,548,493.00</u></u>	<u><u>31,699,847.80</u></u>	<u><u>6,789,363.70</u></u>	<u><u>84,876,029.60</u></u>

**EXPIRED OUTSTANDING MUTUEL TICKET REPORT**

	Date Ticket Purchased	IN STATE							OUT OF STATE	Revenue		
		Total	MDLS-H	MDLS-T	FRA/ACHI	MP	ACRA	Vouchers		Racing Costs	TBA	Horsemens Groups
<b>ACRA</b>	<b>06/28/08 - 07/02/09</b>	\$81,192.61	\$2,628.90	\$215.08	\$505.10	\$2,495.50	\$4,144.70	\$4,791.24	\$65,298.79	\$7,390.36	\$5,822.76	\$0.00
<b>ACHI/FRA</b>	<b>06/28/08 - 07/02/09</b>	\$320,241.66	\$16,272.06	\$1,918.60	\$35,623.31	\$6,879.45	\$94.00	18,143.43	\$241,310.81	\$39,465.57	\$4,446.01	\$0.00
<b>MDLS</b>	<b>06/28/08 - 07/02/09</b>	\$1,083,147.60	\$177,632.62	\$22,757.59	\$12,868.53	\$19,156.36	\$55.10	49,654.15	\$795,482.95	\$138,796.81	\$20,984.48	\$0.00
<b>MP</b>	<b>06/28/08 - 07/02/09</b>	\$625,643.05	\$10,033.34	\$6,136.22	\$2,252.45	\$254,385.12	\$140.80	26,432.03	\$326,263.09	\$149,690.14	\$142,448.75	\$0.00
<b>Grand Total</b>		<u>\$2,110,224.92</u>	<u>\$206,566.92</u>	<u>\$31,027.49</u>	<u>\$51,249.39</u>	<u>\$282,916.43</u>	<u>\$4,434.60</u>	<u>\$99,020.85</u>	<u>\$1,428,355.64</u>	<u>\$335,342.88</u>	<u>\$173,702.00</u>	<u>\$0.00</u>

**New Jersey Racing Commission  
Revenue to State  
2009  
January 1 through December 31, 2009**

<b>Racing Association/Source</b>	<b>Expired Outstanding Pari-Mutuel Tickets</b>	<b>Breakage &amp; Expired Outstanding Pari-Mutuel Tickets</b>	<b>License Fees</b>	<b>Total State Revenue</b>
Atlantic City Racing Association	\$7,390.36		\$24,510.00	\$31,900.36
Freehold Raceway	39,465.57		95,850.00	135,315.57
Meadowlands	138,796.81		174,295.00	313,091.81
Monmouth Park Jockey Club	149,690.14		120,735.00	270,425.14
Trenton	0.00		171,750.00	171,750.00
Computer/Phone		353,339.23		353,339.23
Woodbridge		661,570.98		661,570.98
Vineland		113,110.67		113,110.67
Tom's River		322,883.19		322,883.19
<b>Total State Revenue</b>	<u><u>\$335,342.88</u></u>	<u><u>\$1,450,904.07</u></u>	<u><u>\$587,140.00</u></u>	<u><u>\$2,373,386.95</u></u>

**New Jersey Racing Commission**  
**CY 2009 License Revenue Received (12/31/09)**  
**Harness**

Note: All license data is based on transactions that occurred in CY 2009

Cat	Classification	Fee	ACRA		Freehold		Meadowlands		Trenton		Monmouth		Total	
			Qty	Total	Qty	Total	Qty	Total	Qty	Total	Qty	Total	Qty	Total
<b>All Licenses Issued in CY 2009</b>														
1	Owner	\$50	2	\$100	632	\$31,600	746	\$37,300	518	\$25,900	3	\$150	1,901	\$95,050
2	Trainer	\$50		\$0	188	\$9,400	266	\$13,300	43	\$2,150	2	\$100	499	\$24,950
3	Assistant Trainer	\$30		\$0		\$0		\$0		\$0		\$0	0	\$0
4	Driver	\$50		\$0	43	\$2,150	85	\$4,250	13	\$650		\$0	141	\$7,050
5	Driver / Trainer	\$50		\$0	309	\$15,450	195	\$9,750	45	\$2,250		\$0	549	\$27,450
6	Jockey	\$50		\$0		\$0		\$0		\$0		\$0	0	\$0
7	Jockey Apprentice	\$30		\$0		\$0		\$0		\$0		\$0	0	\$0
8	Jockey Agent	\$50		\$0		\$0		\$0		\$0		\$0	0	\$0
9	Stable Employee	\$5		\$0	509	\$2,545	432	\$2,160	6	\$30		\$0	947	\$4,735
10	C.I.D.	\$10		\$0	121	\$1,210	1,122	\$11,220	8	\$80		\$0	1,251	\$12,510
11	C.I.D. - Vendors	\$10		\$0	28	\$280	216	\$2,160	9	\$90	1	\$10	254	\$2,540
12	Pari-Mutuel Employee	\$25		\$0	33	\$825	203	\$5,075	2	\$50		\$0	238	\$5,950
13	Veterinarian	\$50		\$0	30	\$1,500	8	\$400		\$0		\$0	38	\$1,900
14	Valet	\$20		\$0		\$0		\$0		\$0		\$0	0	\$0
15	Plater	\$20		\$0	2	\$40	5	\$100		\$0		\$0	7	\$140
16	Vendor	\$50		\$0	9	\$450	18	\$900	6	\$300		\$0	33	\$1,650
17	Stable Name	\$50		\$0	75	\$3,750	172	\$8,600	146	\$7,300	2	\$100	395	\$19,750
18	Multiple Ownership	\$50		\$0	88	\$4,400	358	\$17,900	91	\$4,550	1	\$50	538	\$26,900
19	Corporate Stable Name	\$50		\$0	26	\$1,300	92	\$4,600	63	\$3,150		\$0	181	\$9,050
20	Authorized Agent	\$50		\$0		\$0		\$0		\$0	1	\$50	1	\$50
21	Off-Track Stables	\$50		\$0		\$0		\$0	27	\$1,350		\$0	27	\$1,350
23	Veternarian - NJRC	\$0		\$0	5	\$0	5	\$0		\$0		\$0	10	\$0
25	C.I.D. - NJRC	\$0		\$0	14	\$0	19	\$0		\$0		\$0	33	\$0
26	Off-Track Proprietors	\$0		\$0		\$0		\$0		\$0		\$0	0	\$0
27	Official - NJRC	\$0		\$0	5	\$0		\$0		\$0		\$0	5	\$0
28	Partnership	\$0		\$0	20	\$0		\$0	24	\$0		\$0	44	\$0
31	Owner - 3 Year	\$150		\$0	96	\$14,400	202	\$30,300	289	\$43,350	5	\$750	592	\$88,800
<b>All Licenses wo/dups Issued in CY 2009</b>			2	\$100	2,233	\$89,300	4,144	\$148,015	1,290	\$91,200	15	\$1,210	7,684	\$329,825
DUP Duplicate License Fees				\$5	1	\$5	1	\$5		\$0		\$0	2	\$10
<b>Total Licenses w/dups Issued in CY 2009</b>				<b>\$100</b>		<b>\$89,305</b>		<b>\$148,020</b>		<b>\$91,200</b>		<b>\$1,210</b>		<b>\$329,835</b>

**New Jersey Racing Commission**  
**CY 2009 License Revenue Received (12/31/09)**  
**Thoroughbred**

Note: All license data is based on transactions that occurred in CY 2009

Cat	Classification	Fee	ACRA		Freehold		Meadowlands		Trenton		Monmouth		Total	
			Qty	Total	Qty	Total	Qty	Total	Qty	Total	Qty	Total	Qty	Total
<b>All Licenses Issued in CY 2009</b>														
1	Owner	\$50	161	\$8,050	35	\$1,750	181	\$9,050	427	\$21,350	576	\$28,800	1,380	\$69,000
2	Trainer	\$50	140	\$7,000	11	\$550	66	\$3,300	57	\$2,850	286	\$14,300	560	\$28,000
3	Assistant Trainer	\$30	4	\$120		\$0	4	\$120		\$0	95	\$2,850	103	\$3,090
4	Driver	\$50		\$0		\$0		\$0		\$0		\$0	0	\$0
5	Driver / Trainer	\$50		\$0		\$0		\$0		\$0		\$0	0	\$0
6	Jockey	\$50	54	\$2,700		\$0	21	\$1,050		\$0	80	\$4,000	155	\$7,750
7	Jockey Apprentice	\$30	5	\$150		\$0	7	\$210		\$0	17	\$510	29	\$870
8	Jockey Agent	\$50		\$0		\$0		\$0		\$0	17	\$850	17	\$850
9	Stable Employee	\$5	7	\$35	4	\$20	7	\$35		\$0	1,029	\$5,145	1,047	\$5,235
10	C.I.D.	\$10	46	\$460	28	\$280	21	\$210	24	\$240	371	\$3,710	490	\$4,900
11	C.I.D. - Vendors	\$10	1	\$10	1	\$10		\$0		\$0	280	\$2,800	282	\$2,820
12	Pari-Mutuel Employee	\$25	19	\$475	35	\$875		\$0	2	\$50	118	\$2,950	174	\$4,350
13	Veterinarian	\$50		\$0	1	\$50		\$0		\$0	16	\$800	17	\$850
14	Valet	\$20	13	\$260		\$0		\$0		\$0	13	\$260	26	\$520
15	Plater	\$20		\$0		\$0		\$0		\$0	21	\$420	21	\$420
16	Vendor	\$50		\$0		\$0		\$0	2	\$100	28	\$1,400	30	\$1,500
17	Stable Name	\$50	48	\$2,400	14	\$700	59	\$2,950	243	\$12,150	297	\$14,850	661	\$33,050
18	Multiple Ownership	\$50	2	\$100	2	\$100	21	\$1,050	17	\$850	53	\$2,650	95	\$4,750
19	Corporate Stable Name	\$50	8	\$400	1	\$50	10	\$500	33	\$1,650	36	\$1,800	88	\$4,400
20	Authorized Agent	\$50		\$0		\$0	5	\$250	2	\$100	37	\$1,850	44	\$2,200
21	Off-Track Stables	\$50		\$0		\$0		\$0	19	\$950		\$0	19	\$950
23	Veterinarian - NJRC	\$0		\$0		\$0		\$0		\$0	1	\$0	1	\$0
25	C.I.D. - NJRC	\$0	5	\$0		\$0		\$0		\$0	2	\$0	7	\$0
26	Off-Track Proprietors	\$0		\$0		\$0		\$0		\$0		\$0	0	\$0
27	Official - NJRC	\$0		\$0	2	\$0		\$0		\$0		\$0	2	\$0
28	Partnership	\$0	2	\$0	2	\$0		\$0	11	\$0	12	\$0	27	\$0
31	Owner - 3 Year	\$150	15	\$2,250	9	\$1,350	46	\$6,900	264	\$39,600	197	\$29,550	531	\$79,650
<b>All Licenses wo/dups Issued in CY 2009</b>			530	\$24,410	145	\$5,735	448	\$25,625	1,101	\$79,890	3,582	\$119,495	5,806	\$255,155
DUP Duplicate License Fees		\$5		\$0		\$0		\$0		\$0	4	\$20	4	\$20
<b>Total Licenses w/dups Issued in CY 2009</b>				<b>\$24,410</b>		<b>\$5,735</b>		<b>\$25,625</b>		<b>\$79,890</b>		<b>\$119,515</b>		<b>\$255,175</b>

**New Jersey Racing Commission**  
**CY 2009 License Revenue Received (12/31/09)**  
**Account Wagering**

Note: All license data is based on transactions that occurred in CY 2009

Cat	Classification	Fee	ACRA		Freehold		Meadowlands		Trenton		Monmouth		Total	
			Qty	Total	Qty	Total	Qty	Total	Qty	Total	Qty	Total	Qty	Total
<b>All Licenses Issued in CY 2009</b>														
1	Owner	\$50		\$0		\$0		\$0		\$0		\$0	0	\$0
2	Trainer	\$50		\$0		\$0		\$0		\$0		\$0	0	\$0
3	Assistant Trainer	\$50		\$0		\$0		\$0		\$0		\$0	0	\$0
4	Driver	\$50		\$0		\$0		\$0		\$0		\$0	0	\$0
5	Driver / Trainer	\$50		\$0		\$0		\$0		\$0		\$0	0	\$0
6	Jockey	\$50		\$0		\$0		\$0		\$0		\$0	0	\$0
7	Jockey Apprentice	\$30		\$0		\$0		\$0		\$0		\$0	0	\$0
8	Jockey Agent	\$50		\$0		\$0		\$0		\$0		\$0	0	\$0
9	Stable Employee	\$5		\$0		\$0		\$0		\$0		\$0	0	\$0
10	C.I.D.	\$10		\$0	36	\$360	17	\$170	14	\$140		\$0	67	\$670
11	C.I.D. - Vendors	\$10		\$0	10	\$100	43	\$430	42	\$420	1	\$10	96	\$960
12	Pari-Mutuel Employee	\$25		\$0	14	\$350		\$0	4	\$100		\$0	18	\$450
13	Veterinarian	\$50		\$0		\$0		\$0		\$0		\$0	0	\$0
14	Valet	\$20		\$0		\$0		\$0		\$0		\$0	0	\$0
15	Plater	\$20		\$0		\$0		\$0		\$0		\$0	0	\$0
16	Vendor	\$50		\$0		\$0	1	\$50		\$0		\$0	1	\$50
17	Stable Name	\$50		\$0		\$0		\$0		\$0		\$0	0	\$0
18	Multiple Ownership	\$50		\$0		\$0		\$0		\$0		\$0	0	\$0
19	Corporate Stable Name	\$50		\$0		\$0		\$0		\$0		\$0	0	\$0
20	Authorized Agent	\$50		\$0		\$0		\$0		\$0		\$0	0	\$0
21	Off-Track Stables	\$50		\$0		\$0		\$0		\$0		\$0	0	\$0
23	Veterinarian - NJRC	\$0		\$0		\$0		\$0		\$0		\$0	0	\$0
25	C.I.D. - NJRC	\$0		\$0		\$0		\$0	3	\$0		\$0	3	\$0
26	Off-Track Proprietors	\$0		\$0		\$0		\$0		\$0		\$0	0	\$0
27	Official - NJRC	\$0		\$0		\$0		\$0		\$0		\$0	0	\$0
28	Partnership	\$0		\$0		\$0		\$0		\$0		\$0	0	\$0
31	Owner - 3 Year	\$150		\$0		\$0		\$0		\$0		\$0	0	\$0
<b>All Licenses wo/dups Issued in CY 2009</b>			0	\$0	60	\$810	61	\$650	63	\$660	1	\$10	185	\$2,130
DUP Duplicate License Fees		\$5		\$0		\$0		\$0		\$0		\$0	0	\$0
<b>Total Licenses w/dups Issued in CY 2009</b>				<b>\$0</b>		<b>\$810</b>		<b>\$650</b>		<b>\$660</b>		<b>\$10</b>		<b>\$2,130</b>

**New Jersey Racing Commission  
CY 2009 License Revenue Received (12/31/09)**

**Harness, Thoroughbred, Account Wagering, and Off Track Wagering Combined**

Note: All license data is based on transactions that occurred in CY 2009

Cat	Classification	Fee	ACRA		Freehold		Meadowlands		Trenton		Monmouth		Total	
			Qty	Total	Qty	Total	Qty	Total	Qty	Total	Qty	Total	Qty	Total
<b>All Licenses Issued in CY 2009</b>														
1	Owner	\$50	163	\$8,150	667	\$33,350	927	\$46,350	945	\$47,250	579	\$28,950	3,281	\$164,050
2	Trainer	\$50	140	\$7,000	199	\$9,950	332	\$16,600	100	\$5,000	288	\$14,400	1,059	\$52,950
3	Assistant Trainer	\$30	4	\$120	0	\$0	4	\$120	0	\$0	95	\$2,850	103	\$3,090
4	Driver	\$50	0	\$0	43	\$2,150	85	\$4,250	13	\$650	0	\$0	141	\$7,050
5	Driver / Trainer	\$50	0	\$0	309	\$15,450	195	\$9,750	45	\$2,250	0	\$0	549	\$27,450
6	Jockey	\$50	54	\$2,700	0	\$0	21	\$1,050	0	\$0	80	\$4,000	155	\$7,750
7	Jockey Apprentice	\$30	5	\$150	0	\$0	7	\$210	0	\$0	17	\$510	29	\$870
8	Jockey Agent	\$50	0	\$0	0	\$0	0	\$0	0	\$0	17	\$850	17	\$850
9	Stable Employee	\$5	7	\$35	513	\$2,565	439	\$2,195	6	\$30	1,029	\$5,145	1,994	\$9,970
10	C.I.D.	\$10	46	\$460	185	\$1,850	1,160	\$11,600	46	\$460	371	\$3,710	1,808	\$18,080
11	C.I.D. - Vendors	\$10	1	\$10	39	\$390	259	\$2,590	51	\$510	282	\$2,820	632	\$6,320
12	Pari-Mutuel Employee	\$25	19	\$475	82	\$2,050	203	\$5,075	8	\$200	118	\$2,950	430	\$10,750
13	Veterinarian	\$50	0	\$0	31	\$1,550	8	\$400	0	\$0	16	\$800	55	\$2,750
14	Valet	\$20	13	\$260	0	\$0	0	\$0	0	\$0	13	\$260	26	\$520
15	Plater	\$20	0	\$0	2	\$40	5	\$100	0	\$0	21	\$420	28	\$560
16	Vendor	\$50	0	\$0	9	\$450	19	\$950	8	\$400	28	\$1,400	64	\$3,200
17	Stable Name	\$50	48	\$2,400	89	\$4,450	231	\$11,550	389	\$19,450	299	\$14,950	1,056	\$52,800
18	Multiple Ownership	\$50	2	\$100	90	\$4,500	379	\$18,950	108	\$5,400	54	\$2,700	633	\$31,650
19	Corporate Stable Name	\$50	8	\$400	27	\$1,350	102	\$5,100	96	\$4,800	36	\$1,800	269	\$13,450
20	Authorized Agent	\$50	0	\$0	0	\$0	5	\$250	2	\$100	38	\$1,900	45	\$2,250
21	Off-Track Stables	\$50	0	\$0	0	\$0	0	\$0	46	\$2,300	0	\$0	46	\$2,300
23	Veterinarian - NJRC	\$0	0	\$0	5	\$0	5	\$0	0	\$0	1	\$0	11	\$0
25	C.I.D. - NJRC	\$0	5	\$0	14	\$0	19	\$0	3	\$0	2	\$0	43	\$0
26	Off-Track Proprietors	\$0	0	\$0	0	\$0	0	\$0	0	\$0	0	\$0	0	\$0
27	Official - NJRC	\$0	0	\$0	7	\$0	0	\$0	0	\$0	0	\$0	7	\$0
28	Partnership	\$0	2	\$0	22	\$0	0	\$0	35	\$0	12	\$0	71	\$0
31	Owner - 3 Year	\$150	15	\$2,250	105	\$15,750	248	\$37,200	553	\$82,950	202	\$30,300	1,123	\$168,450
<b>All Licenses wo/dups Issued in CY 2009</b>			532	\$24,510	2,438	\$95,845	4,653	\$174,290	2,454	\$171,750	3,598	\$120,715	13,675	\$587,110
DUP Duplicate License Fees		\$5	0	\$0	1	\$5	1	\$5	0	\$0	4	\$20	6	\$30
<b>Total Licenses w/dups Issued in CY 2009</b>				<u><b>\$24,510</b></u>		<u><b>\$95,850</b></u>		<u><b>\$174,295</b></u>		<u><b>\$171,750</b></u>		<u><b>\$120,735</b></u>		<u><b>\$587,140</b></u>

New Jersey Racing Commission

Handle Analysis - Account Wagering and Off-Track Wagering

2005	Account Wagering			Total		
	Internet	Phone	Total			
January	2,764,228	-		2,764,228		
February	2,981,316	-		2,981,316		
March	3,342,326	-		3,342,326		
April	3,431,741	15,338		3,447,079		
May	4,071,602	549,196		4,620,798		
June	3,491,680	571,808		4,063,488		
July	3,622,625	691,037		4,313,662		
August	3,507,896	699,421		4,207,317		
September	2,967,236	556,795		3,524,031		
October	3,416,376	615,639		4,032,015		
November	3,318,465	617,722		3,936,187		
December	3,214,626	675,930		3,890,556		
<b>Total</b>	<b>40,130,115</b>	<b>4,992,886</b>		<b>45,123,001</b>		
In-State	6,794,288	17% 516,779	10%	7,311,067	16%	
Out-of-State	33,335,827	83%	4,476,107	90%	37,811,935	84%
<b>TOTAL</b>	<b>40,130,115</b>	<b>4,992,886</b>		<b>45,123,002</b>		
<b>Avg. Daily Handles</b>	<b>109,946</b>	<b>18,630</b>		<b>123,625</b>		
<b>Race Days</b>	<b>365</b>	<b>268</b>				



New Jersey Racing Commission

Handle Analysis - Account Wagering and Off-Track Wagering

2006	Account Wagering					
	Internet	Phone	Total			
January	3,771,295	692,060	4,463,355			
February	4,293,436	690,596	4,984,032			
March	4,937,729	781,789	5,719,518			
April	4,460,261	762,240	5,222,501			
May	4,616,701	814,466	5,431,167			
June	4,840,820	781,312	5,622,132			
July	4,083,244	761,513	4,844,757			
August	4,851,855	932,072	5,783,927			
September	3,727,832	691,849	4,419,681			
October	3,768,029	657,032	4,425,061			
November	4,392,715	736,401	5,129,116			
December	4,191,210	743,977	4,935,187			
<b>Total</b>	<b>51,935,126</b>	<b>9,045,307</b>	<b>60,980,433</b>			
In-State	9,184,786	18%	1,400,236	15%	10,585,023	17%
Out-of-State	42,750,340	82%	7,645,071	85%	50,395,412	83%
<b>TOTAL</b>	<b>51,935,126</b>		<b>9,045,307</b>		<b>60,980,434</b>	
<b>Avg. Daily Handles</b>	<b>142,288</b>		<b>24,782</b>		<b>167,070</b>	
<b>Race Days</b>	<b>365</b>		<b>365</b>		<b>365</b>	

New Jersey Racing Commission  
 Handle Analysis - Account Wagering and Off-Track Wagering

2007	Account Wagering			Off Track Wagering				Grand	
	Internet	Phone	Total	Toms River	Vineland	Woodbridge	Total	Total	
January	4,373,002	742,587	5,115,589				0	5,115,589	
February	5,046,474	817,830	5,864,304				0	5,864,304	
March	5,722,697	877,219	6,599,916		158,945		158,945	6,758,862	
April	5,120,070	807,192	5,927,262		1,480,600		1,480,600	7,407,862	
May	6,241,428	1,091,627	7,333,055		1,676,413		1,676,413	9,009,468	
June	5,827,328	1,197,316	7,024,644		1,590,748		1,590,748	8,615,392	
July	6,012,208	1,242,094	7,254,302		1,433,311		1,433,311	8,687,613	
August	6,255,077	1,276,389	7,531,466		1,483,356		1,483,356	9,014,822	
September	5,128,798	1,121,185	6,249,983		1,237,647		1,237,647	7,487,630	
October	5,310,442	1,215,850	6,526,292		1,335,298	3,003,672	4,338,970	10,865,261	
November	4,680,288	1,028,236	5,708,524		1,228,757	7,684,982	8,913,738	14,622,262	
December	4,601,071	869,623	5,470,694		1,140,656	7,438,037	8,578,693	14,049,386	
<b>Total</b>	<b>64,318,882</b>	<b>12,287,148</b>	<b>76,606,030</b>	<b>0</b>	<b>12,765,730</b>	<b>18,126,690</b>	<b>30,892,420</b>	<b>107,498,450</b>	
In-State	10,984,802	17% 2,250,901	18% 13,235,703	17%	918,777	7% 2,158,321	12% 3,077,098	10% 16,312,801	15%
Out-of-State	53,334,080	83% 10,036,247	82% 63,370,328	83%	11,846,953	93% 15,968,369	88% 27,815,323	90% 91,185,650	85%
<b>TOTAL</b>	<b>64,318,882</b>	<b>12,287,148</b>	<b>76,606,031</b>	<b>0</b>	<b>12,765,730</b>	<b>18,126,690</b>	<b>30,892,421</b>	<b>107,498,452</b>	
<b>Avg. Daily Handles</b>	<b>176,216</b>	<b>33,663</b>	<b>209,880</b>	<b>0</b>	<b>45,920</b>	<b>238,509</b>			
<b>Race Days</b>	<b>365</b>	<b>365</b>	<b>365</b>	<b>0</b>	<b>278</b>	<b>76</b>			

New Jersey Racing Commission

Handle Analysis - Account Wagering and Off-Track Wagering

2008	Account Wagering			Off Track Wagering				Grand	
	Internet	Phone	Total	Toms River	Vineland	Woodbridge	Total	Total	
January	5,289,656	942,918	6,232,574		1,268,047	7,878,942	9,146,989	15,379,563	
February	7,247,379	840,234	8,087,613		1,373,439	7,677,075	9,050,514	17,138,127	
March	7,354,161	808,234	8,162,395		1,475,734	9,224,200	10,699,934	18,862,329	
April	7,589,413	751,068	8,340,481	193,974	1,207,009	7,799,600	9,200,583	17,541,064	
May	9,537,059	967,640	10,504,699	4,685,584	1,598,275	9,161,612	15,445,471	25,950,170	
June	6,668,004	812,001	7,480,005	3,674,299	1,350,339	7,400,004	12,424,642	19,904,647	
July	5,904,927	986,575	6,891,502	3,961,644	1,370,702	7,780,430	13,112,776	20,004,278	
August	6,107,285	1,107,665	7,214,950	4,233,149	1,400,487	8,760,082	14,393,718	21,608,668	
September	4,512,744	706,679	5,219,423	3,317,165	1,045,433	7,308,728	11,671,326	16,890,749	
October	6,692,974	843,572	7,536,546	3,588,378	1,174,192	8,338,532	13,101,102	20,637,648	
November	5,704,132	657,048	6,361,180	3,230,087	962,528	7,814,677	12,007,292	18,368,472	
December	6,483,002	562,353	7,045,355	2,827,871	1,007,845	6,696,979	10,532,695	17,578,050	
<b>Total</b>	<b>79,090,736</b>	<b>9,985,987</b>	<b>89,076,723</b>	<b>29,712,151</b>	<b>15,234,030</b>	<b>95,840,861</b>	<b>140,787,042</b>	<b>229,863,765</b>	
In-State	11,530,110	15% 2,008,452	20% 13,538,562	15% 5,021,534	17% 998,624	7% 12,698,461	13% 18,718,619	13% 32,257,181	14%
Out-of-State	67,560,626	85% 7,977,535	80% 75,538,161	85% 24,690,617	83% 14,235,406	93% 83,142,400	87% 122,068,423	87% 197,606,584	86%
<b>TOTAL</b>	<b>79,090,736</b>	<b>9,985,987</b>	<b>89,076,723</b>	<b>29,712,151</b>	<b>15,234,030</b>	<b>95,840,861</b>	<b>140,787,042</b>	<b>229,863,765</b>	
<b>Avg. Daily Handles</b>	<b>216,687</b>	<b>27,359</b>	<b>244,046</b>	<b>120,781</b>	<b>41,737</b>	<b>262,578</b>			
<b>Race Days</b>	<b>365</b>	<b>365</b>	<b>365</b>	<b>246</b>	<b>365</b>	<b>365</b>			



New Jersey Racing Commission  
 Handle Analysis - Account Wagering and Off-Track Wagering

2005						<b>Total</b>
<b>Month</b>	<b>Internet</b>	<b>Phone</b>	<b>Toms River</b>	<b>Vineland</b>	<b>Woodbridge</b>	<b>AW and OTW</b>
January	2,764,228	-				2,764,228
February	2,981,316	-				2,981,316
March	3,342,326	-				3,342,326
April	3,431,741	15,338				3,447,079
May	4,071,602	549,196				4,620,798
June	3,491,680	571,808				4,063,488
July	3,622,625	691,037				4,313,662
August	3,507,896	699,421				4,207,317
September	2,967,236	556,795				3,524,031
October	3,416,376	615,639				4,032,015
November	3,318,465	617,722				3,936,187
December	3,214,626	675,930				3,890,556
<b>Totals</b>	<b>40,130,115</b>	<b>4,992,886</b>	<b>-</b>	<b>-</b>	<b>-</b>	<b>45,123,001</b>

2006						<b>Total</b>
<b>Month</b>	<b>Internet</b>	<b>Phone</b>	<b>Toms River</b>	<b>Vineland</b>	<b>Woodbridge</b>	<b>AW and OTW</b>
January	3,771,295	692,060				4,463,355
February	4,293,436	690,596				4,984,032
March	4,937,729	781,789				5,719,518
April	4,460,261	762,240				5,222,501
May	4,616,701	814,466				5,431,167
June	4,840,820	781,312				5,622,132
July	4,083,244	761,513				4,844,757
August	4,851,855	932,072				5,783,927
September	3,727,832	691,849				4,419,681
October	3,768,029	657,032				4,425,061
November	4,392,715	736,401				5,129,116
December	4,191,210	743,977				4,935,187
<b>Totals</b>	<b>51,935,126</b>	<b>9,045,307</b>	<b>-</b>	<b>-</b>	<b>-</b>	<b>60,980,433</b>

2007						<b>Total</b>
<b>Month</b>	<b>Internet</b>	<b>Phone</b>	<b>Toms River</b>	<b>Vineland</b>	<b>Woodbridge</b>	<b>AW and OTW</b>
January	4,373,002	742,587		-	-	5,115,589
February	5,046,474	817,830		-	-	5,864,304
March	5,722,697	877,219		158,945	-	6,758,862
April	5,120,070	807,192		1,480,600	-	7,407,862
May	6,241,428	1,091,627		1,676,413	-	9,009,468
June	5,827,328	1,197,316		1,590,748	-	8,615,392
July	6,012,208	1,242,094		1,433,311	-	8,687,613
August	6,255,077	1,276,389		1,483,356	-	9,014,822
September	5,128,798	1,121,185		1,237,647	-	7,487,630
October	5,310,442	1,215,850		1,335,298	3,003,672	10,865,261
November	4,680,288	1,028,236		1,228,757	7,684,982	14,622,262
December	4,601,071	869,623		1,140,656	7,438,037	14,049,386
<b>Totals</b>	<b>64,318,882</b>	<b>12,287,148</b>	<b>-</b>	<b>12,765,730</b>	<b>18,126,690</b>	<b>107,498,450</b>

New Jersey Racing Commission  
 Handle Analysis - Account Wagering and Off-Track Wagering

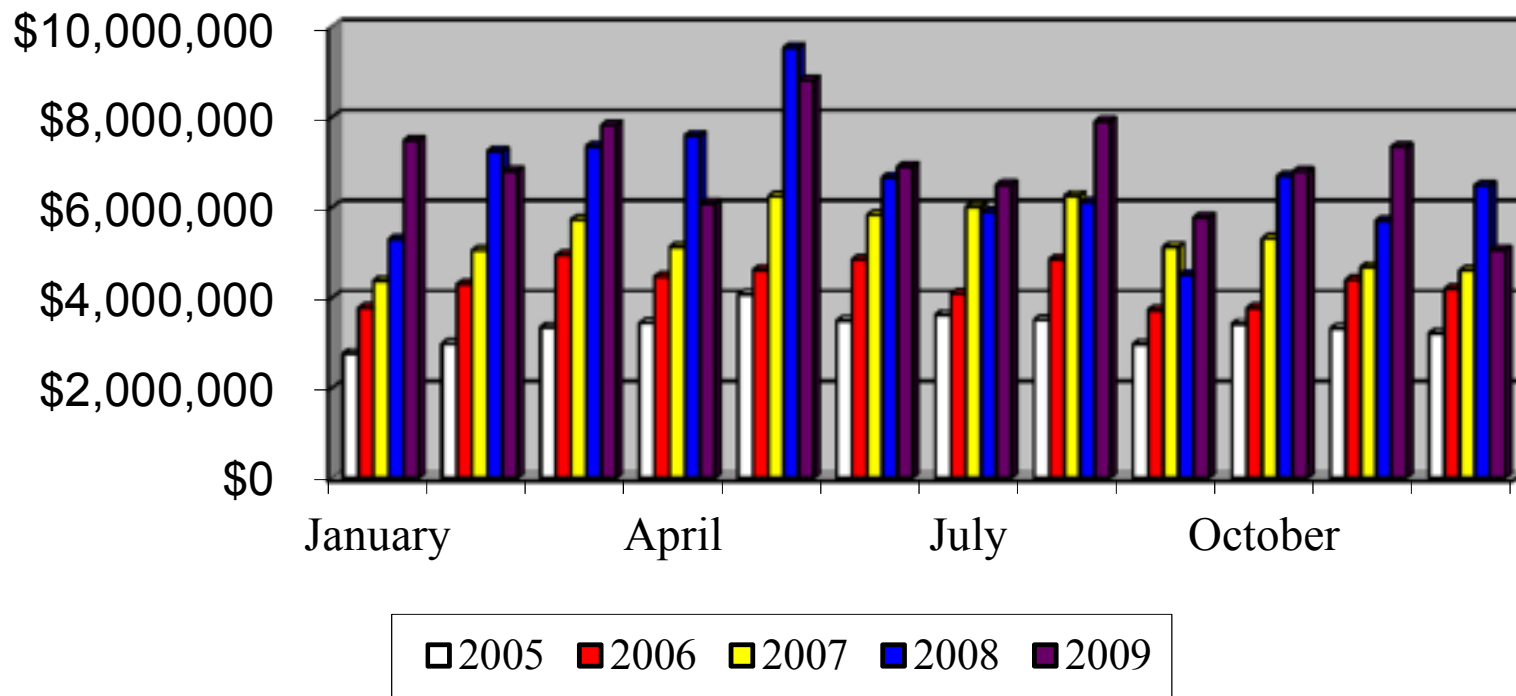
2008						<b>Total</b>
<b>Month</b>	<b>Internet</b>	<b>Phone</b>	<b>Toms River</b>	<b>Vineland</b>	<b>Woodbridge</b>	<b>AW and OTW</b>
January	5,289,656	942,918		1,268,047	7,878,942	15,379,563
February	7,247,379	840,234		1,373,439	7,677,075	17,138,127
March	7,354,161	808,234		1,475,734	9,224,200	18,862,329
April	7,589,413	751,068	193,974	1,207,009	7,799,600	17,541,064
May	9,537,059	967,640	4,685,584	1,598,275	9,161,612	25,950,170
June	6,668,004	812,001	3,674,299	1,350,339	7,400,004	19,904,647
July	5,904,927	986,575	3,961,644	1,370,702	7,780,430	20,004,278
August	6,107,285	1,107,665	4,233,149	1,400,487	8,760,082	21,608,668
September	4,512,744	706,679	3,317,165	1,045,433	7,308,728	16,890,749
October	6,692,974	843,572	3,588,378	1,174,192	8,338,532	20,637,648
November	5,704,132	657,048	3,230,087	962,528	7,814,677	18,368,472
December	6,483,002	562,353	2,827,871	1,007,845	6,696,979	17,578,050
Totals	79,090,736	9,985,987	29,712,151	15,234,030	95,840,861	229,863,765

2009						<b>Total</b>
<b>Month</b>	<b>Internet</b>	<b>Phone</b>	<b>Toms River</b>	<b>Vineland</b>	<b>Woodbridge</b>	<b>AW and OTW</b>
January	7,482,425	769,531	3,339,894	1,336,680	7,608,995	20,537,525
February	6,807,608	631,282	3,358,313	1,330,247	7,811,043	19,938,493
March	7,815,292	798,120	3,637,743	1,323,101	7,981,681	21,555,937
April	6,088,335	775,463	3,269,699	1,291,415	7,503,519	18,928,431
May	8,808,995	957,670	4,215,055	1,685,133	8,684,142	24,350,995
June	6,903,473	813,896	3,627,249	1,253,676	7,053,837	19,652,131
July	6,502,491	913,991	3,698,063	1,171,984	7,560,179	19,846,708
August	7,906,841	927,814	3,897,492	1,326,382	8,120,620	22,179,149
September	5,781,252	619,427	3,070,705	1,043,205	7,191,506	17,706,095
October	6,784,652	720,385	3,375,383	1,043,734	7,981,149	19,905,303
November	7,338,038	752,701	3,000,020	1,234,618	7,500,542	19,825,919
December	5,059,076	519,245	2,404,819	938,394	6,367,930	15,289,464
Totals	83,278,478	9,199,525	40,894,435	14,978,569	91,365,143	239,716,150

New Jersey Racing Commission  
 Handle Analysis - Account Wagering and Off-Track Wagering  
 Internet Wagering

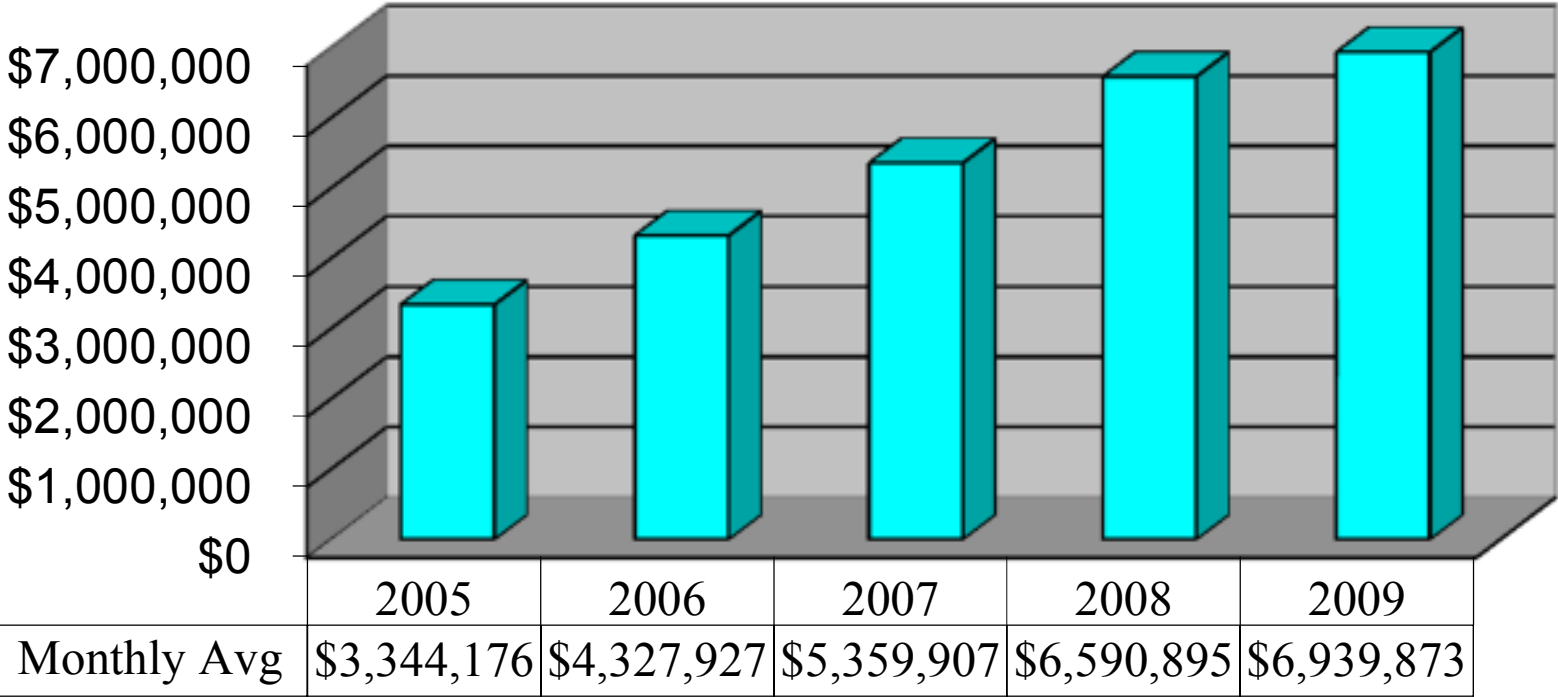
	<b>2005</b>	<b>2006</b>	<b>2007</b>	<b>2008</b>	<b>2009</b>
January	2,764,228	3,771,295	4,373,002	5,289,656	7,482,425
February	2,981,316	4,293,436	5,046,474	7,247,379	6,807,608
March	3,342,326	4,937,729	5,722,697	7,354,161	7,815,292
April	3,431,741	4,460,261	5,120,070	7,589,413	6,088,335
May	4,071,602	4,616,701	6,241,428	9,537,059	8,808,995
June	3,491,680	4,840,820	5,827,328	6,668,004	6,903,473
July	3,622,625	4,083,244	6,012,208	5,904,927	6,502,491
August	3,507,896	4,851,855	6,255,077	6,107,285	7,906,841
September	2,967,236	3,727,832	5,128,798	4,512,744	5,781,252
October	3,416,376	3,768,029	5,310,442	6,692,974	6,784,652
November	3,318,465	4,392,715	4,680,288	5,704,132	7,338,038
December	3,214,626	4,191,210	4,601,071	6,483,002	5,059,076
	<u>40,130,115</u>	<u>51,935,126</u>	<u>64,318,882</u>	<u>79,090,736</u>	<u>83,278,478</u>
<b>Monthly Avg</b>	<b>3,344,176</b>	<b>4,327,927</b>	<b>5,359,907</b>	<b>6,590,895</b>	<b>6,939,873</b>

## NJAW - Internet Wagering (Comparison by Month)





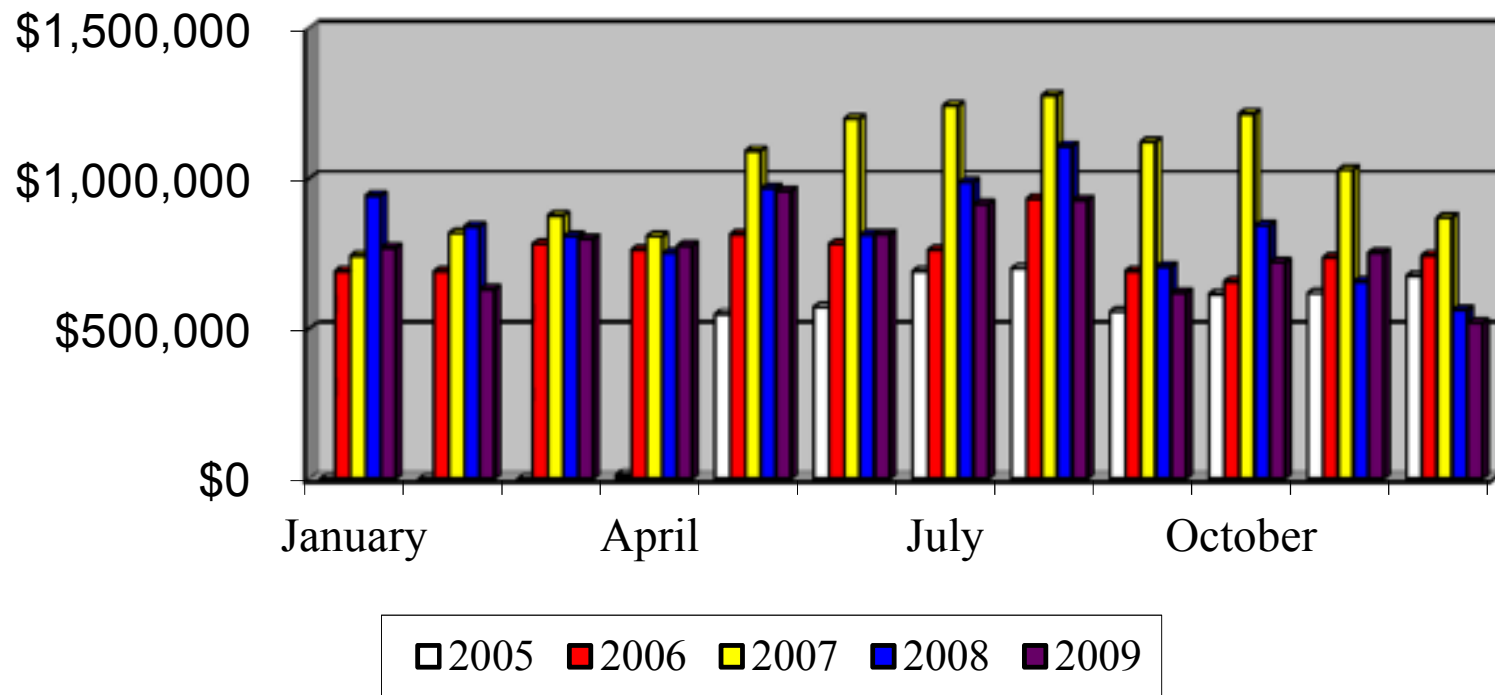
# NJAW - Internet Wagering (Monthly Average Handles)



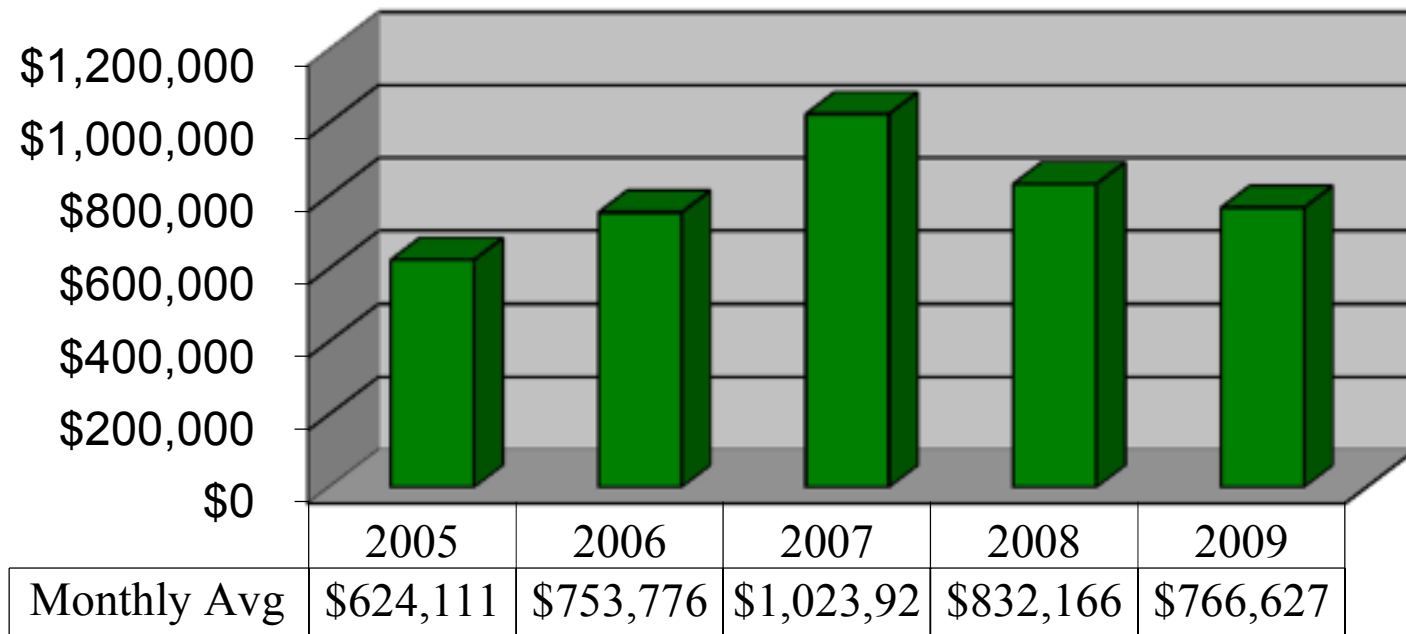
New Jersey Racing Commission  
 Handle Analysis - Account Wagering and Off-Track Wagering  
 Phone Wagering

	<b>2005</b>	<b>2006</b>	<b>2007</b>	<b>2008</b>	<b>2009</b>
January	-	692,060	742,587	942,918	769,531
February	-	690,596	817,830	840,234	631,282
March	-	781,789	877,219	808,234	798,120
April	15,338	762,240	807,192	751,068	775,463
May	549,196	814,466	1,091,627	967,640	957,670
June	571,808	781,312	1,197,316	812,001	813,896
July	691,037	761,513	1,242,094	986,575	913,991
August	699,421	932,072	1,276,389	1,107,665	927,814
September	556,795	691,849	1,121,185	706,679	619,427
October	615,639	657,032	1,215,850	843,572	720,385
November	617,722	736,401	1,028,236	657,048	752,701
December	675,930	743,977	869,623	562,353	519,245
	<u>4,992,886</u>	<u>9,045,307</u>	<u>12,287,148</u>	<u>9,985,987</u>	<u>9,199,525</u>
<b>Monthly Avg</b>	<b>624,111</b>	<b>753,776</b>	<b>1,023,929</b>	<b>832,166</b>	<b>766,627</b>

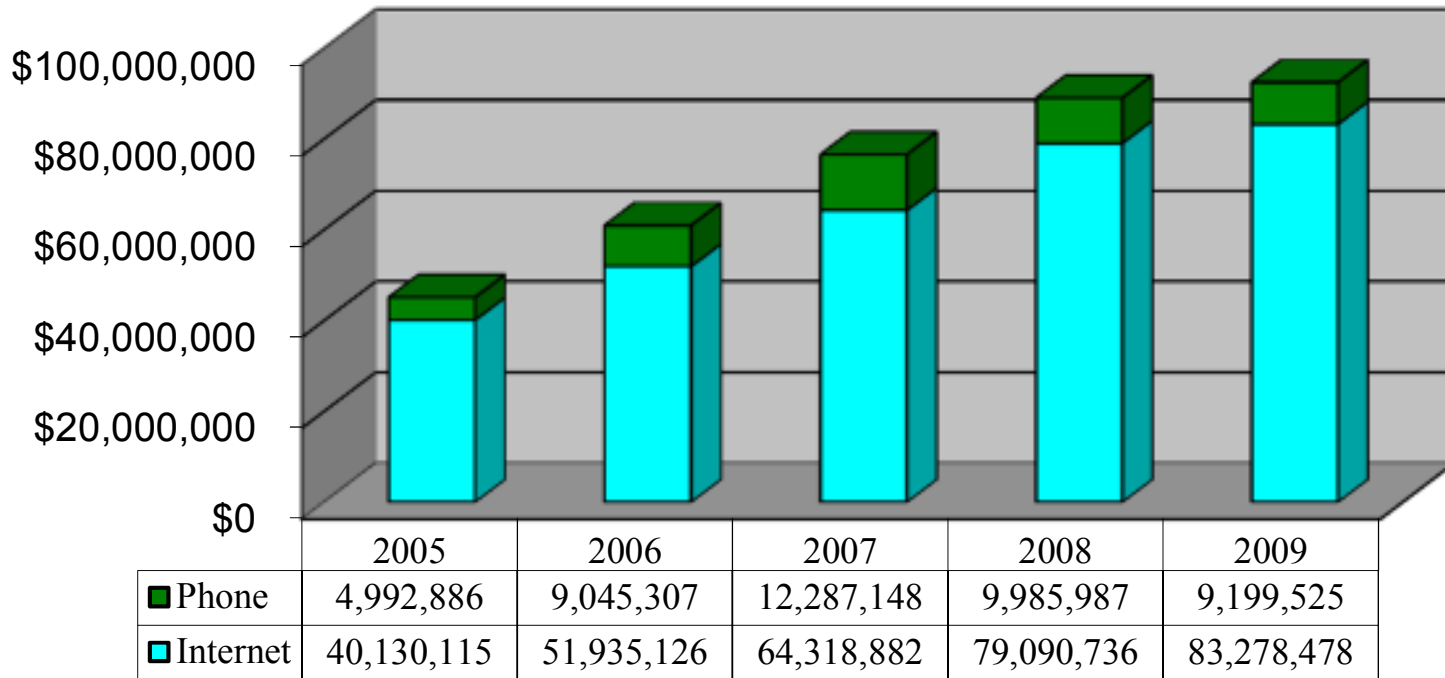
## NJAW - Phone Wagering (Comparison by Month)



## NJAW - Phone Wagering (Monthly Average Handles)



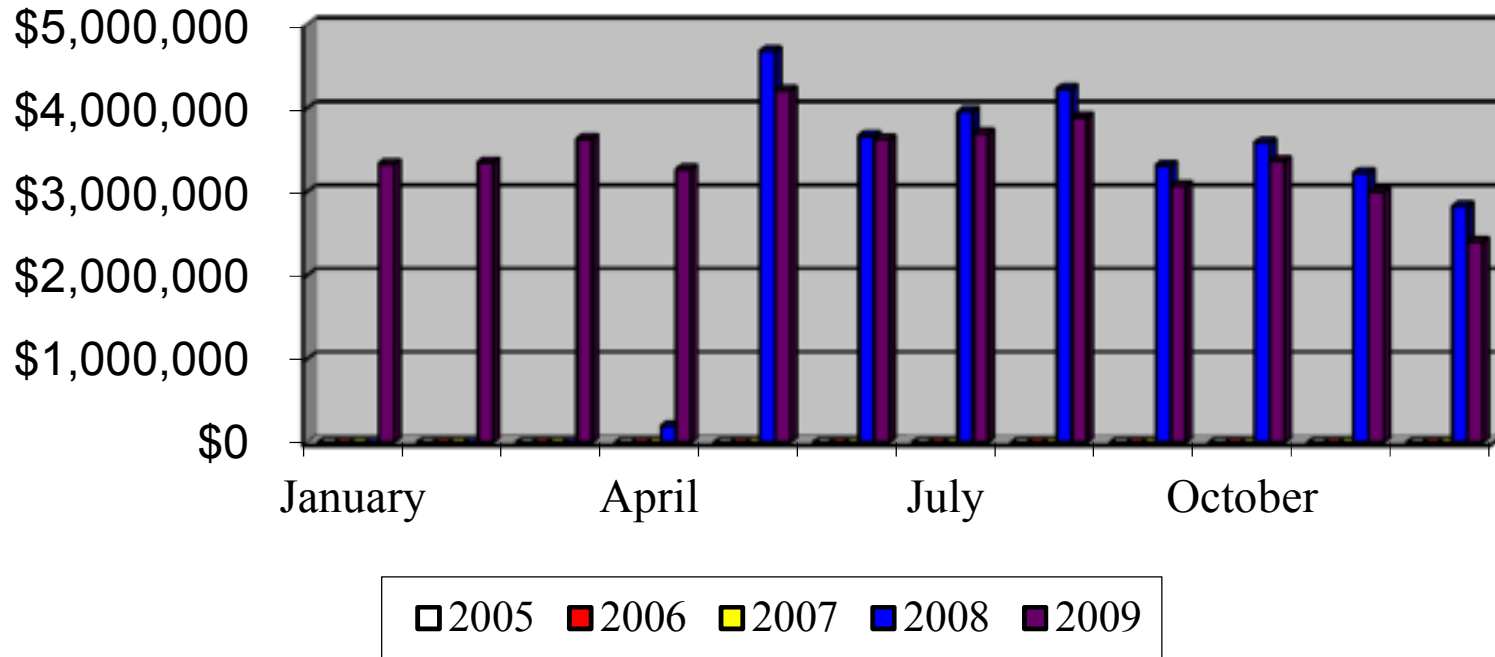
## NJAW - Annual Handles Internet and Phone Wagering Combined



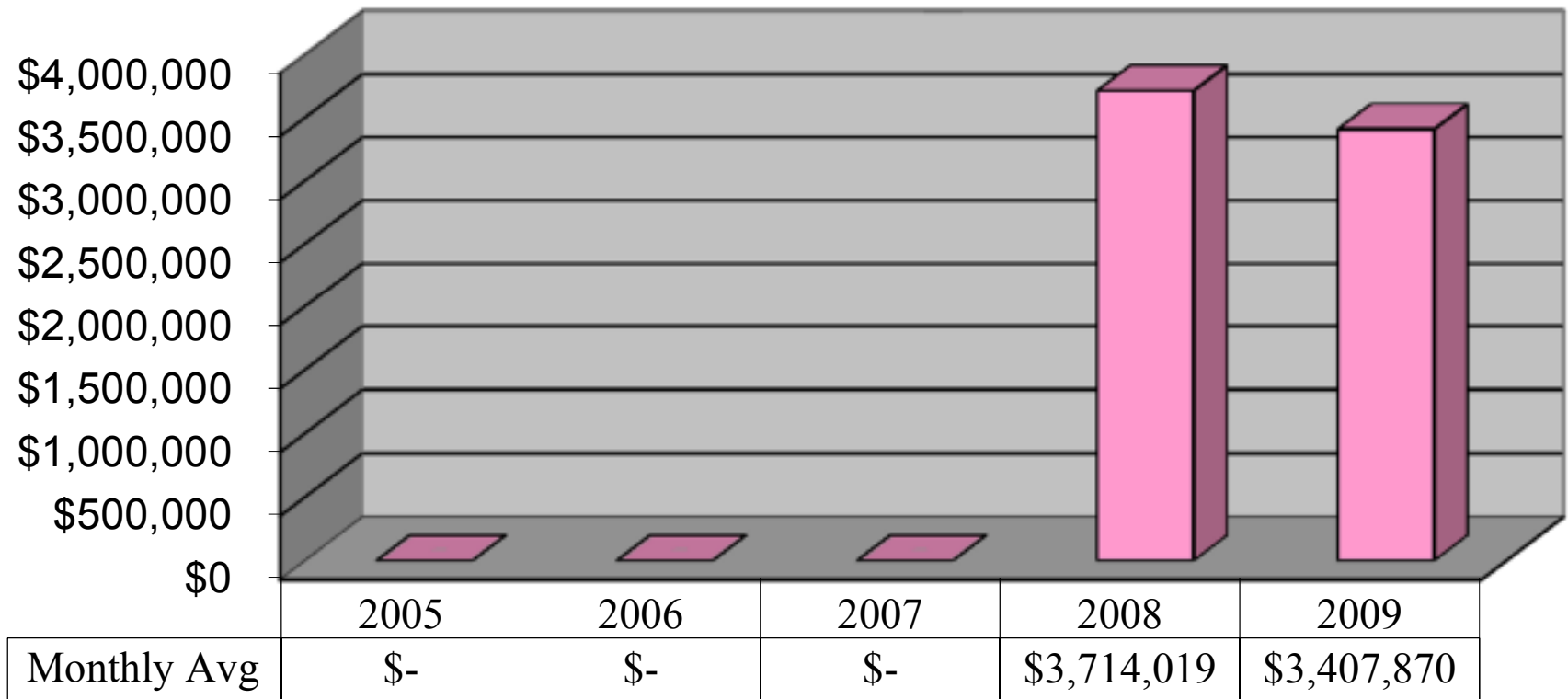
New Jersey Racing Commission  
 Handle Analysis - Account Wagering and Off-Track Wagering  
 Toms River OTW

	<b>2005</b>	<b>2006</b>	<b>2007</b>	<b>2008</b>	<b>2009</b>
January	-	-	-	-	3,339,894
February	-	-	-	-	3,358,313
March	-	-	-	-	3,637,743
April	-	-	-	193,974	3,269,699
May	-	-	-	4,685,584	4,215,055
June	-	-	-	3,674,299	3,627,249
July	-	-	-	3,961,644	3,698,063
August	-	-	-	4,233,149	3,897,492
September	-	-	-	3,317,165	3,070,705
October	-	-	-	3,588,378	3,375,383
November	-	-	-	3,230,087	3,000,020
December	-	-	-	2,827,871	2,404,819
	-	-	-	29,712,151	40,894,435
<b>Monthly Avg</b>				<b>3,714,019</b>	<b>3,407,870</b>

## Toms River OTW - Handle (Comparison by Month)



## Toms River OTW (Monthly Average Handles)

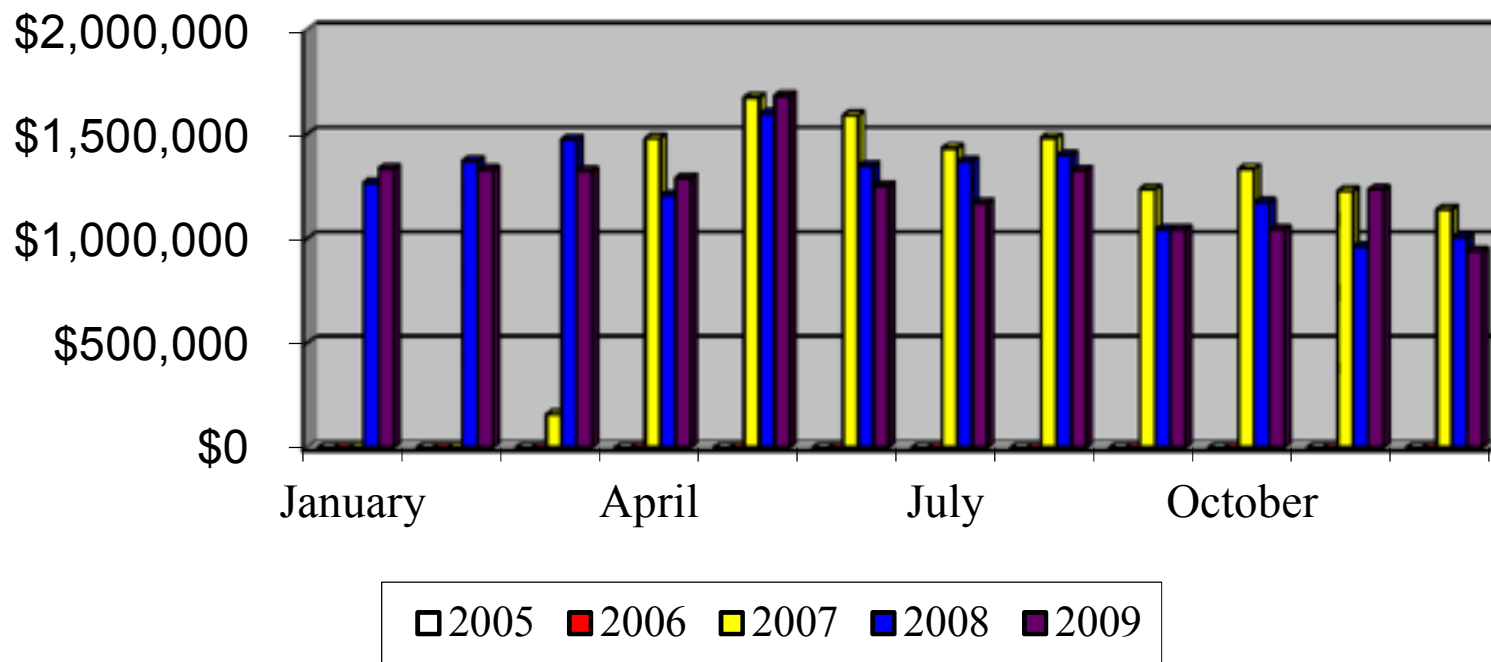




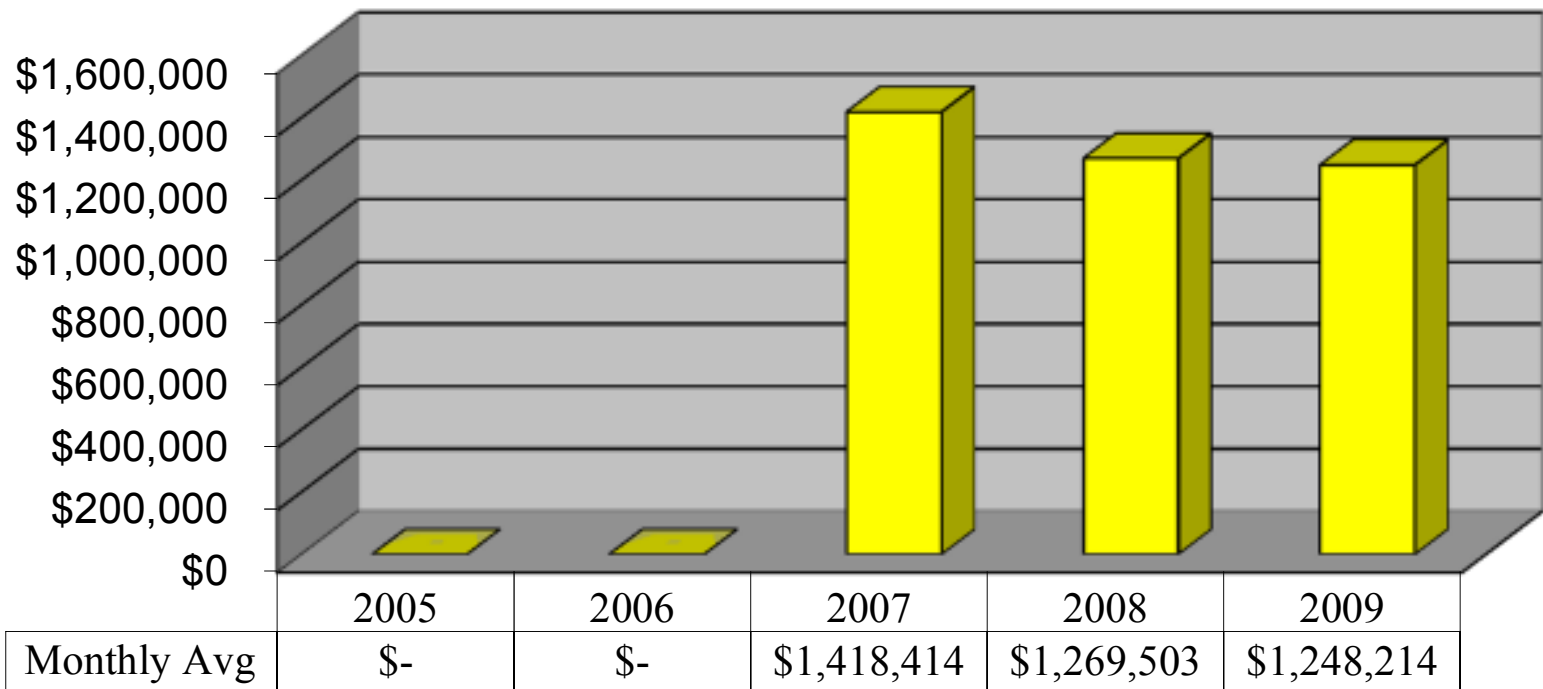
New Jersey Racing Commission  
 Handle Analysis - Account Wagering and Off-Track Wagering  
 Vineland OTW

	<b>2005</b>	<b>2006</b>	<b>2007</b>	<b>2008</b>	<b>2009</b>
January	-	-	-	1,268,047	1,336,680
February	-	-	-	1,373,439	1,330,247
March	-	-	158,945	1,475,734	1,323,101
April	-	-	1,480,600	1,207,009	1,291,415
May	-	-	1,676,413	1,598,275	1,685,133
June	-	-	1,590,748	1,350,339	1,253,676
July	-	-	1,433,311	1,370,702	1,171,984
August	-	-	1,483,356	1,400,487	1,326,382
September	-	-	1,237,647	1,045,433	1,043,205
October	-	-	1,335,298	1,174,192	1,043,734
November	-	-	1,228,757	962,528	1,234,618
December	-	-	1,140,656	1,007,845	938,394
	-	-	12,765,730	15,234,030	14,978,569
<b>Monthly Avg</b>			<b>1,418,414</b>	<b>1,269,503</b>	<b>1,248,214</b>

## Vineland OTW - Handle (Comparison by Month)



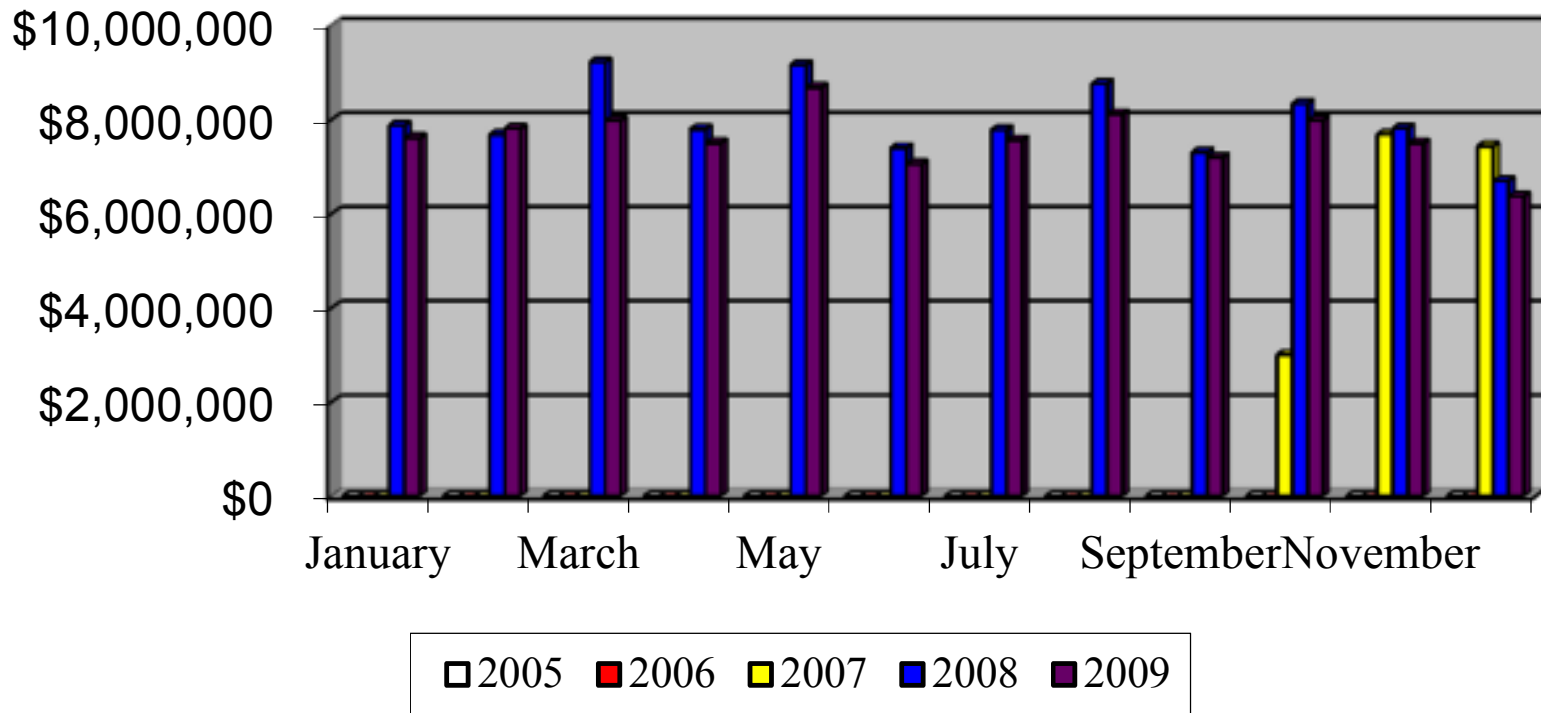
## Vineland OTW (Monthly Average Handles)



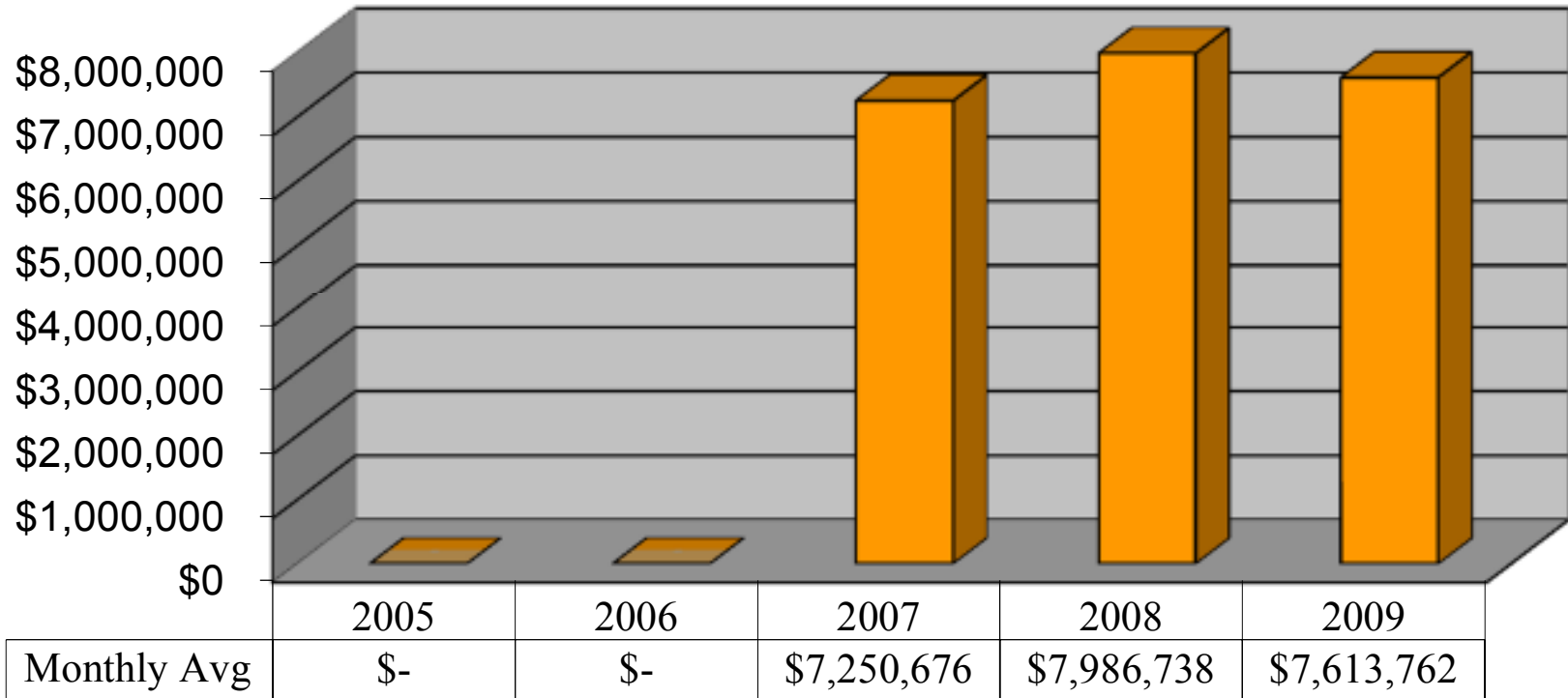
New Jersey Racing Commission  
 Handle Analysis - Account Wagering and Off-Track Wagering  
 Woodbridge OTW

	<b>2005</b>	<b>2006</b>	<b>2007</b>	<b>2008</b>	<b>2009</b>
January	-	-	-	7,878,942	7,608,995
February	-	-	-	7,677,075	7,811,043
March	-	-	-	9,224,200	7,981,681
April	-	-	-	7,799,600	7,503,519
May	-	-	-	9,161,612	8,684,142
June	-	-	-	7,400,004	7,053,837
July	-	-	-	7,780,430	7,560,179
August	-	-	-	8,760,082	8,120,620
September	-	-	-	7,308,728	7,191,506
October	-	-	3,003,672	8,338,532	7,981,149
November	-	-	7,684,982	7,814,677	7,500,542
December	-	-	7,438,037	6,696,979	6,367,930
	-	-	18,126,690	95,840,861	91,365,143
<b>Monthly Avg</b>			<b>7,250,676</b>	<b>7,986,738</b>	<b>7,613,762</b>

## Woodbridge OTW - Handle (Comparison by Month)



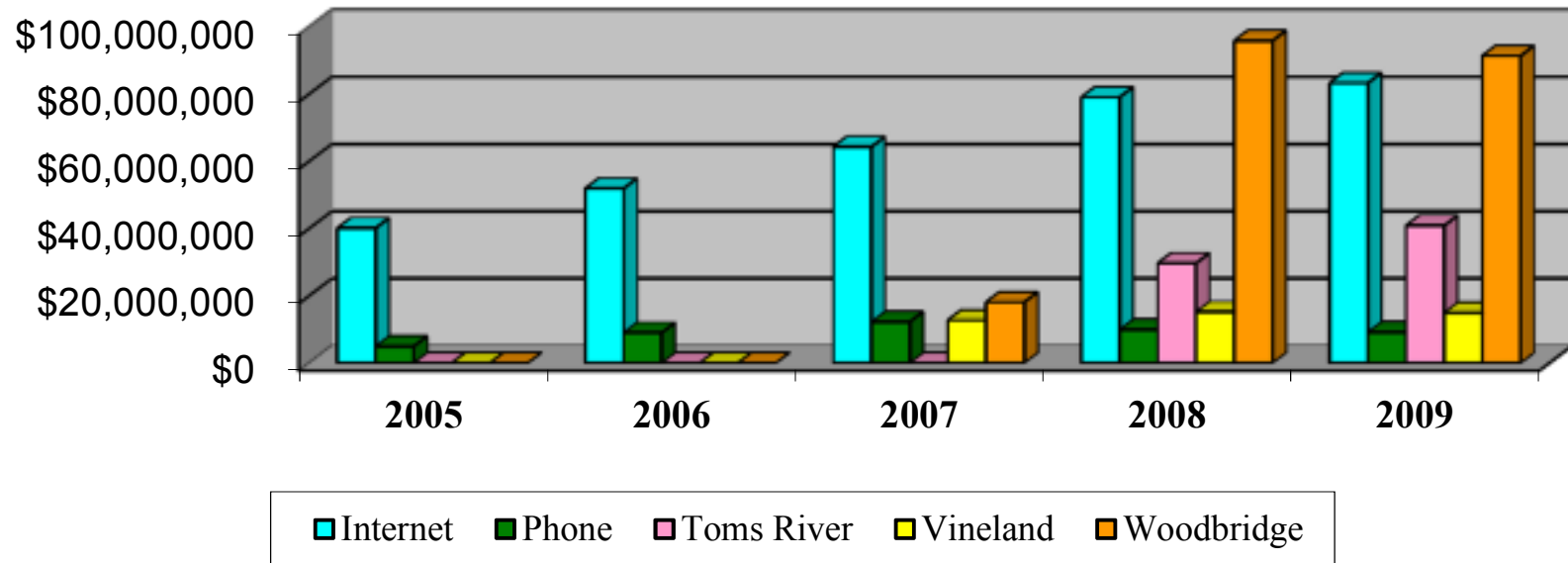
## Woodbridge OTW (Monthly Average Handles)



New Jersey Racing Commission  
Handle Analysis - Account Wagering and Off-Track Wagering  
Annual Comparisons

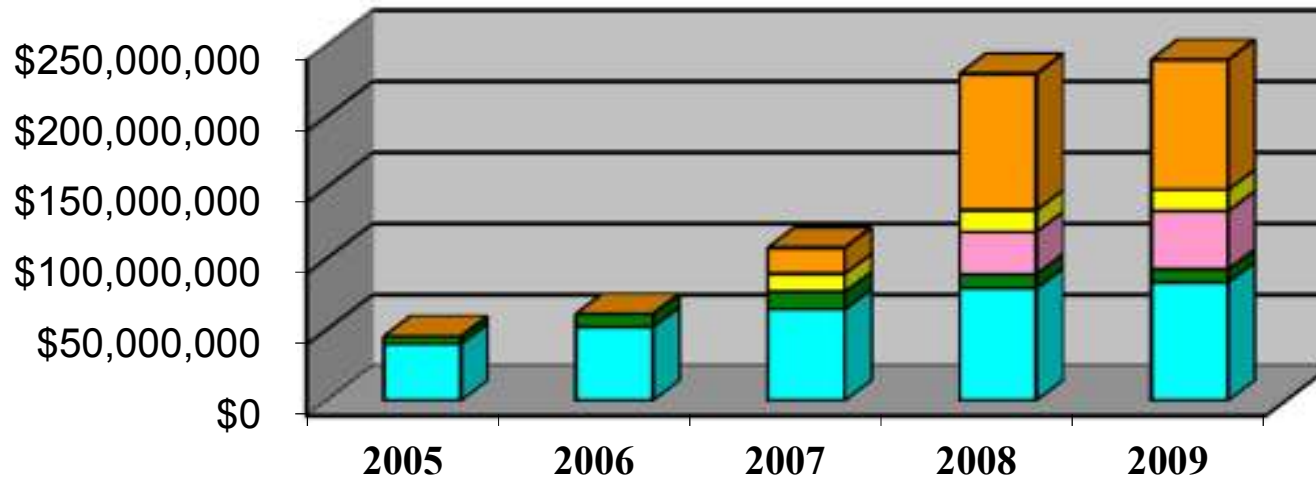
	<b>Internet</b>	<b>Phone</b>	<b>Toms River</b>	<b>Vineland</b>	<b>Woodbridge</b>	<b>Total AW and OTW</b>
<b>2005</b>	40,130,115	4,992,886	-	-	-	45,123,001
<b>2006</b>	51,935,126	9,045,307	-	-	-	60,980,433
<b>2007</b>	64,318,882	12,287,148	-	12,765,730	18,126,690	107,498,450
<b>2008</b>	79,090,736	9,985,987	29,712,151	15,234,030	95,840,861	229,863,765
<b>2009</b>	83,278,478	9,199,525	40,894,435	14,978,570	91,365,144	239,716,152

## Annual Handles - NJAW and OTW's 2005 - 2009





## Combined Annual Handles - NJAW and OTW's 2005 - 2009



■ Internet   ■ Phone   ■ Toms River   ■ Vineland   ■ Woodbridge