



Students mapping a *Pachycephalosaurus* quarry in 2014 in northern Wyoming.

**NEW JERSEY  
STATE MUSEUM  
& PLANETARIUM**



[www.statemuseum.nj.gov](http://www.statemuseum.nj.gov)

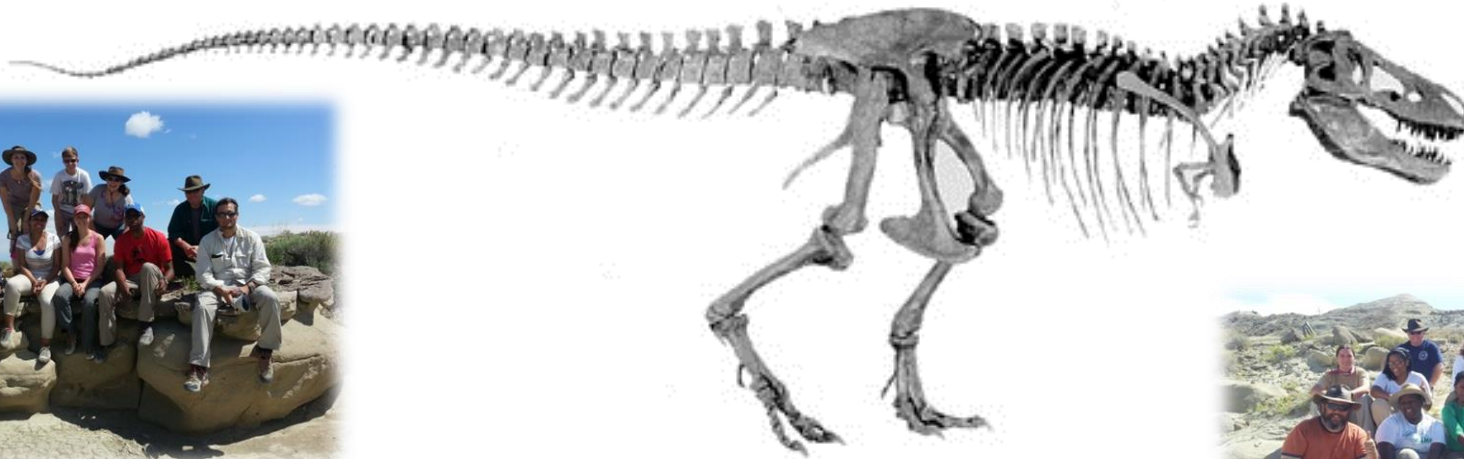


**NEW JERSEY STATE MUSEUM  
NATURAL HISTORY**

## *Dinosaur Hunting in the Rocky Mountains!*



Members of the 2014 Paleontology Field Camp team in northern Wyoming.



**FRIENDS**  
of the New Jersey State Museum

205 West State Street, PO Box 530  
Trenton, NJ 08625  
Ph (609) 394-5310, Fax (609) 292-7636

[Friends.museum@sos.state.nj.us](mailto:Friends.museum@sos.state.nj.us)  
[www.statemuseum.nj.gov](http://www.statemuseum.nj.gov)

Join the New Jersey State Museum's paleontologists on a real paleontological expedition to the fossil-rich rocks of Montana and Wyoming!

Experience the natural history of one of the most beautiful regions in the world.

# PALEONTOLOGY FIELD CAMP

Learn field paleontology by experiencing it! Join the New Jersey State Museum's paleontologists in the foothills of the Rocky Mountains in Montana and Wyoming. We'll collect Cretaceous aquatic and terrestrial animals (including dinosaurs!), Devonian fishes, and rare Paleocene mammals in the Bighorn Basin.

**Teachers:** Complete your yearly continuing education credits by participating.

**Students:** Receive undergraduate or graduate credit from the South Dakota School of Mines & Technology.

**General Public:** Anyone can participate in this experience. Do more on your next vacation – be a dinosaur hunter!

The expedition is a serious museum project and is more than just a field trip. Your efforts will aid the NJSM's decades-long paleontology research efforts in the region.

The field course is led by David Parris, Curator of Natural History, and Jason Schein, Assistant Curator of Natural History, at the NJ State Museum.



## DATES:

- July 12 – 18, 2015
- July 19 – 25, 2015
- July 26 – August 1, 2015

## REQUIREMENTS:

- Must be at least 14 yrs old (14 – 17 must be accompanied by an adult)
- Good physical condition
- Proof of health insurance

## ACCOMMODATIONS:

Room & board are provided by the YBRA field station in Red Lodge, Montana. YBRA is a comfortable facility with typical collegiate field camp cabins. Lodging is dormitory-style, with a men's and women's cabin.



## FEES:

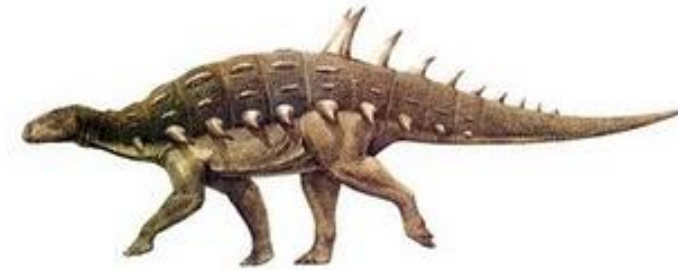
- \$1,300 Friends Members
- \$1,350 Non-Friends Members
- \$1,400 Undergraduate Students
- \$1,450 Graduate Students
  - All fees are per week
  - Students seeking credit are required to attend for 2 weeks.
  - Fees tentative until further notice

10% Deposit Due Upon registration  
Balance due no later than June 15, 2015

Fees include registration, tuition, lodging & meals, collecting tools & equipment, transportation to and from the Billings airport and base camp and to/from all field sites, and all instruction and educational materials.

NOTE: Fees *do not* include transportation to/from your home to Billings, Montana.

*Only 20 spots available each week.  
Reserve yours today!*



For more information or to request an application package, please contact:

**David Parris**

David.Parris@sos.state.nj.us  
(609) 984-3846

or

**Jason P. Schein**

Jason.Schein@sos.state.nj.us  
(609) 292-7660

Follow the adventures on our blog:  
NHinNJ.blogspot.com