



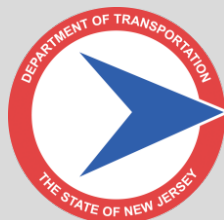
Route 495, Route 1&9 /  
Paterson Plank Road Bridge  
Township of North Bergen, Town of Secaucus, and  
Union City, Hudson County

# PRE-BID MEETING

April 28, 2017



**GPI**  
Greenman-Pedersen, Inc.



NJDOT Engineering & Operations Building  
Training Room A

# Agenda

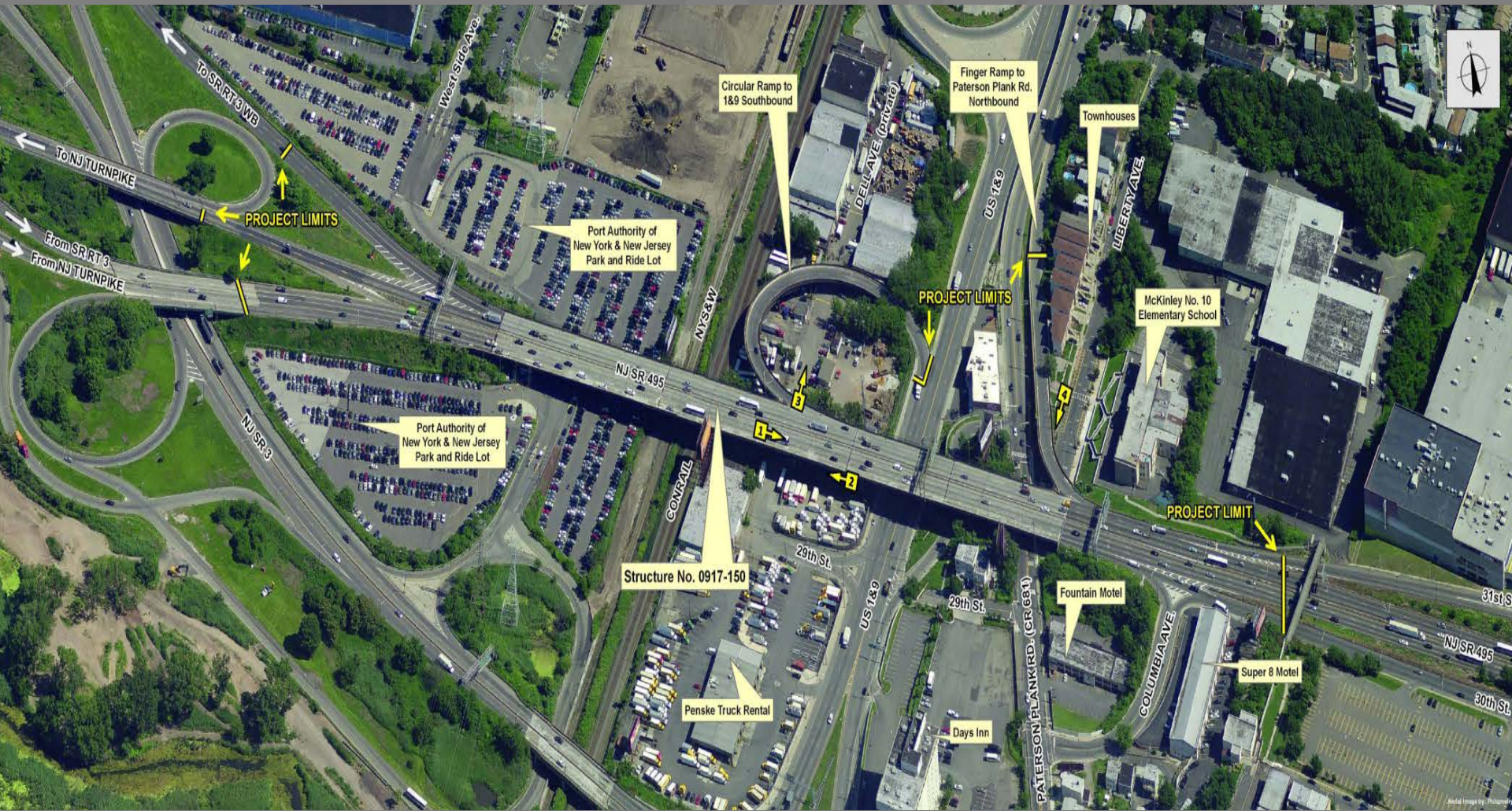
- Introductions
- Project Location
- Construction Schedule
- Contract Provisions of Note
- Structural Scope
- Approach Roadway Scope
- Maintenance and Protection of Traffic (MPT)
- Off-Site Work
- Agency Coordination
- Public Outreach
- Environmental Considerations
- Advance ITS Project



# Project Location



# Project Location



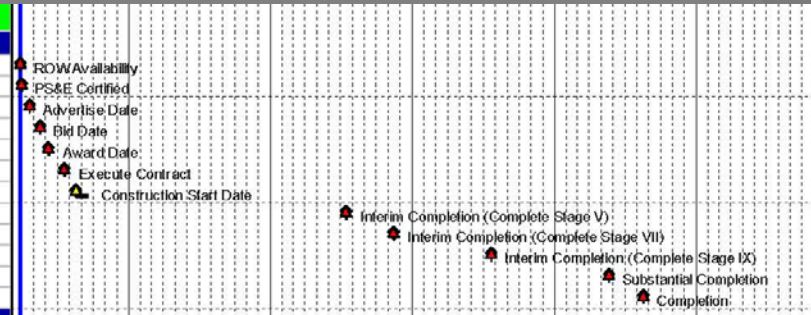
# Construction Schedule

- 48 months from project award to substantial completion
- Approximately 15 months from award to start of long term lane closings
- Offsite work to be completed prior to long term lane closings
- Long term lane restrictions for approximately 2+ years
- Work items with multiple work crews
- Advance ITS Contract – 2017 completion

## Milestones

### Milestone - Administrative

M300	ROW Availability	0		27-Mar-17	1
M050	PS&E Certified	0		31-Mar-17	1
M100	Advertise Date	0	20-Apr-17		1
M200	Bid Date	0	18-May-17		1
M300	Award Date	0	08-Jun-17		2
M350	Execute Contract	0		18-Jul-17	3
M500	Construction Start Date	0	17-Aug-17		22
M700	Interim Completion (Complete Stage V)	0		15-Jul-19	2
M710	Interim Completion (Complete Stage VII)	0		14-Nov-19	1
M720	Interim Completion (Complete Stage IX)	0		21-Jul-20	2
M900	Substantial Completion	0		20-May-21	0
M950	Completion	0		18-Aug-21	0



# Contract Provisions of Note

- Insurance requirements differ significantly from NJDOT Standard Specifications
- Specialty items involved
- High level agency and owner involvement
- Field office and materials lab requirements

# Structure Rehabilitation - Deck



Complete Deck Reconstruction / Viaduct and Ramp Structures

# Structural Scope – Steel Repairs



Complex Viaduct and Connected Ramp Framing



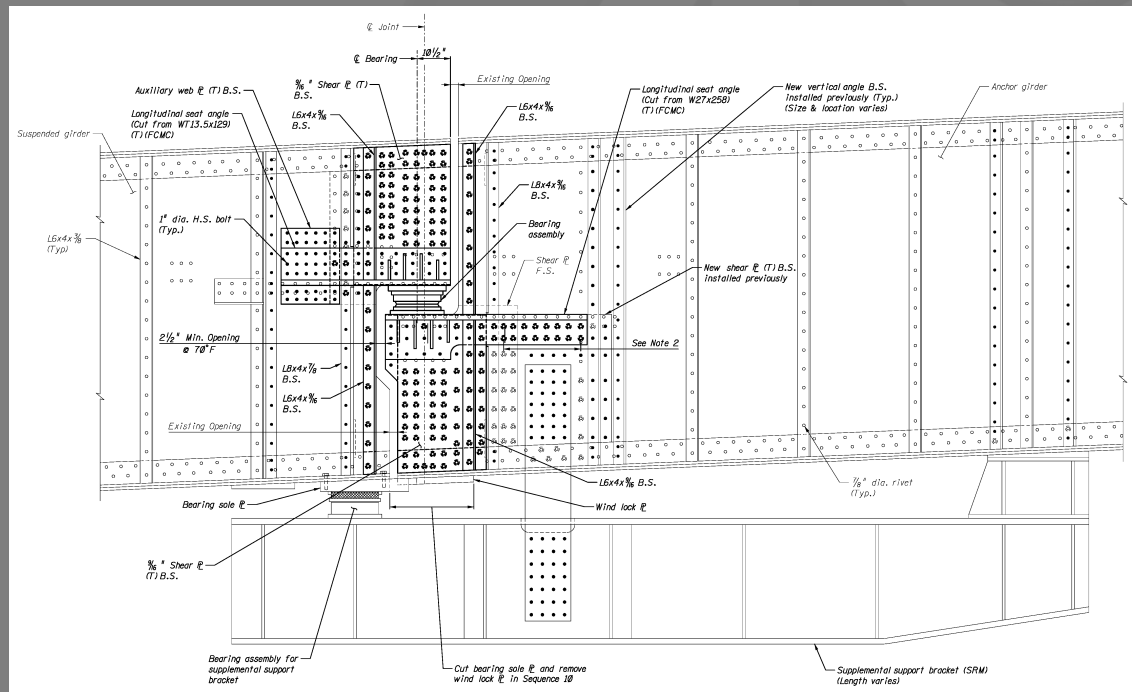
# Structural Scope – Steel Repairs

- Approximately 80 types of repairs/1400+ individual repairs
- More than half of repair types must be completed after deck removal
- Structural Steel Repair, Type 2 – Supplemental Support Brackets/Joint Reframing must be performed prior to deck work
  - Approximately 900,000 lbs. of structural steel
  - Fracture Critical elements
  - Galvanized and painted

# Structural Scope – Steel Repairs

## Mainline Route 495

### Structural Steel Repair, Type 2 – Supplemental Support Bracket/Joint Reframing



Contract Plan Detail

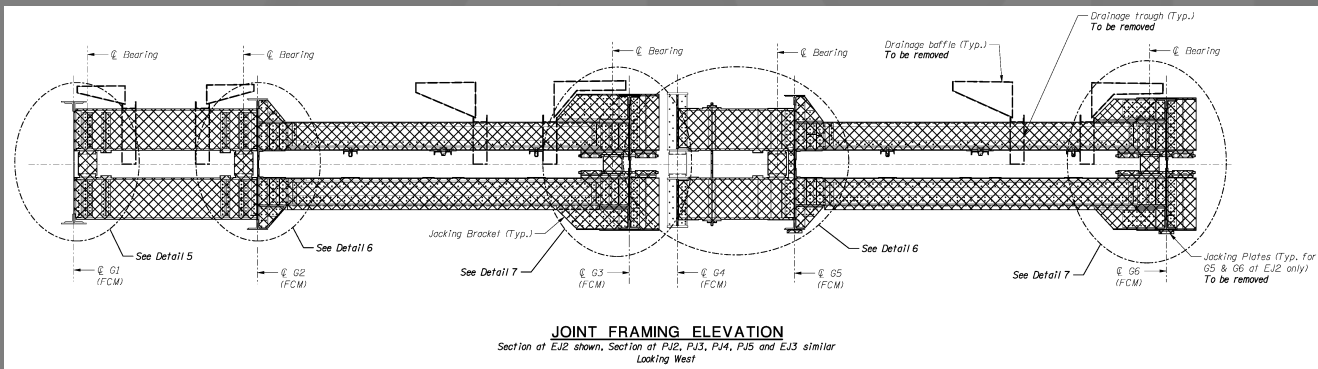


Example

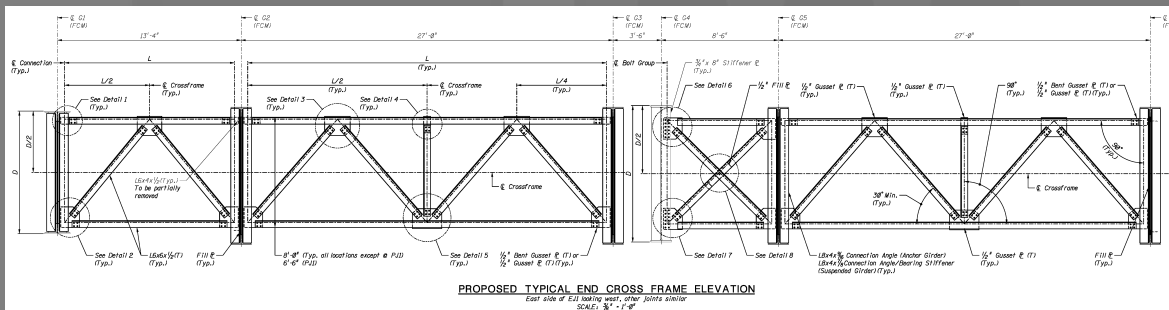
# Structural Scope – Steel Repairs

## Mainline Route 495

## Structural Steel Repair, Type 2 – Supplemental Support Bracket/Joint Reframing

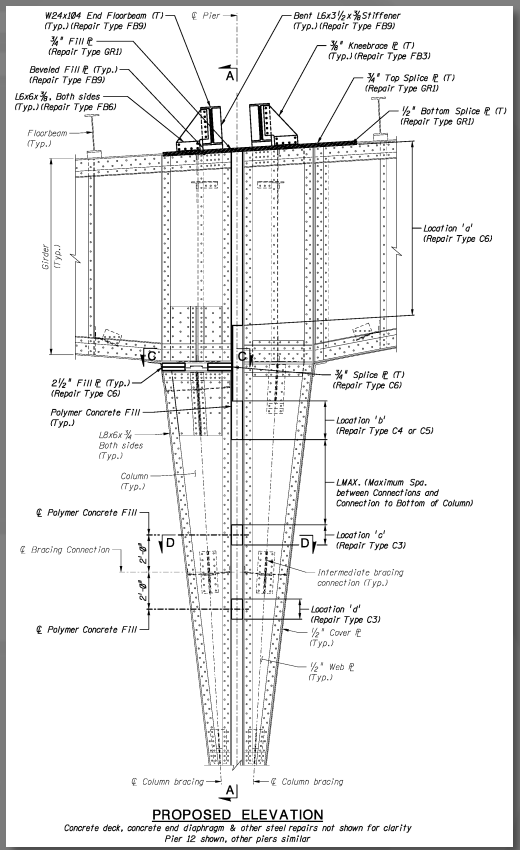


### Existing Framing To Be Removed



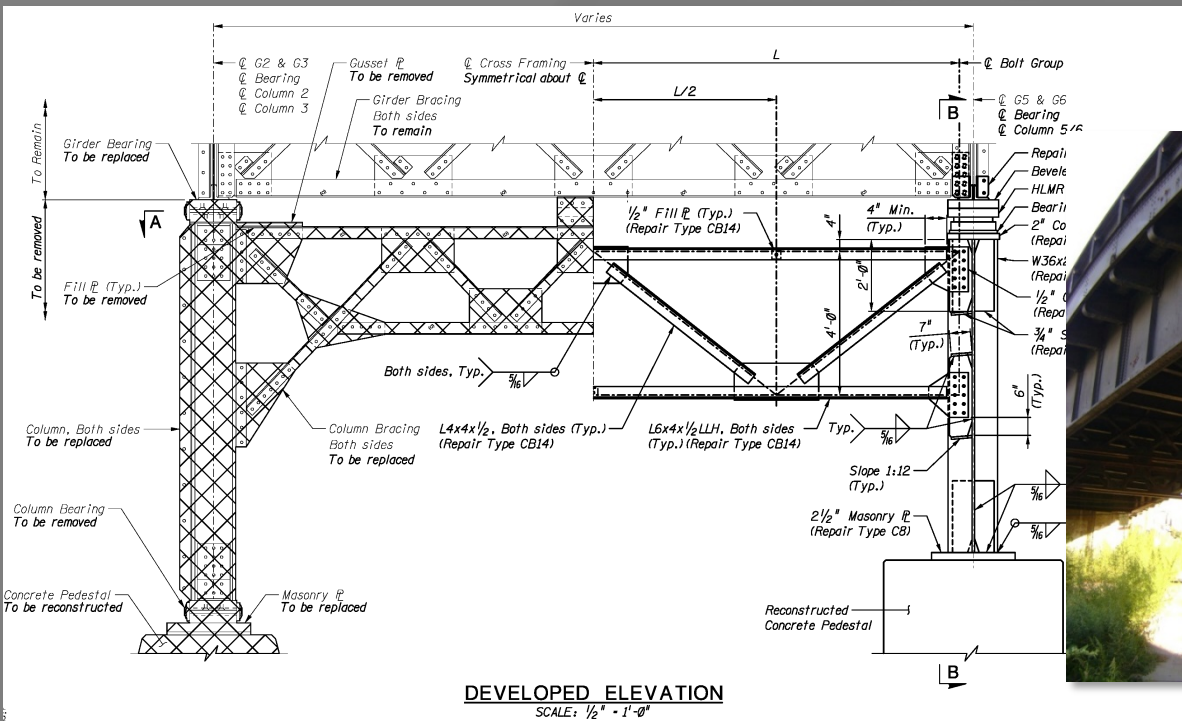
### New Framing

# Structural Scope – Steel Repairs



Southbound Ramp to US 1&9

# Structural Scope – Steel Repairs



Northbound Ramp to Paterson Plank Road

# Structural Scope - Bridge Repainting

- Complete removal of existing lead based paint
- Sensitive Receptors
  - Significant restrictions
  - NJ Transit Park and Ride Lot, McKinley School, and residences



# Structural Scope – Substructure Repairs

- Removal of Span 1a and replacement with MSE retaining wall
- Reconstruction of Southbound Ramp abutment
- Reconstruction of Southbound and Northbound Ramp pier pedestals
- Filling of Northbound Ramp vault with Lightweight Geosynthetic Fill
- Spall repairs on all concrete substructure elements



# Maintenance and Protection of Traffic

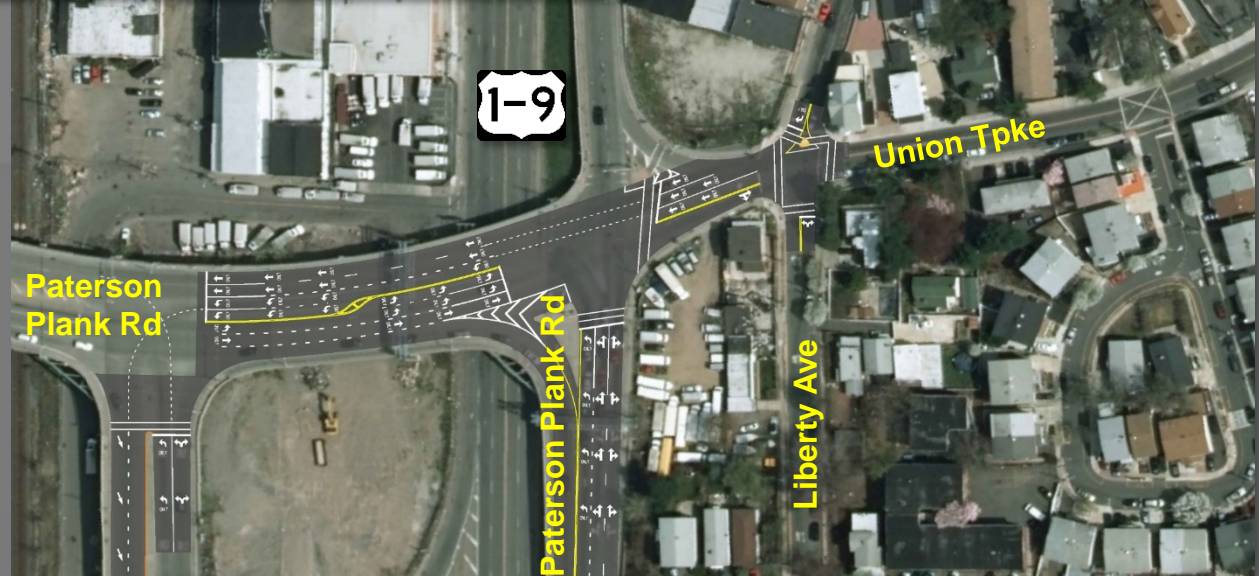
- 12 total construction stages
  - 2 Pre-stages – 3 months duration
  - 8 primary stages for deck reconstruction – 2+ years duration
    - 3 of 4 lanes maintained in each direction
  - 2 Post-stages – 3 months duration
- Exclusive Bus Lane (XBL) maintained
- Multiple ramp closures with detours
- Westbound ITS facilities
  - Overhead Lane Control Signals



# Off-Site Work – Intersection Improvements



Park Plaza Drive/  
Paterson Plank Road



Union Turnpike/  
Paterson Plank Road

# Off-Site Work – Intersection Improvements



Union Turnpike / Bergen Turnpike

# Off-Site Work - Ramp C Infield

- Required to accommodate relocated tenants
- Relocation prior to occupying easement areas adjacent to SB Ramp
- Restored to the previous water quality basin



# Off-Site Work – NJ Transit Property

- Establish contractor access road off of West Side Avenue
- Prepare existing empty lot to accommodate parking



# Agency Coordination

- PANYNJ
  - Owns majority of property beneath structure
  - Owner of Park and Ride Lot property
  - Operator of XBL
  - Own and maintain westbound ITS
  - Tenant Construction and Alteration Permit (TCAP)
- NJ Transit
  - Lessee of Park and Ride Lot
  - Primary user of XBL
  - Access restrictions to and within Park and Ride Lot

# Agency Coordination

- Railroads
  - NYS&W and Conrail
- New Jersey Sports and Exposition Authority
  - Signal timing changes for multiple intersections
- New Jersey Turnpike Authority
  - MPT within their jurisdiction
- Hudson County and local municipalities
  - Signal timing changes for multiple intersections

# Route 495 Public Outreach

*Designed to educate the public about the project before and during construction*

- Public Information Centers
- Notification Program
- Project specific Public Outreach Subconsultant

# Environmental Considerations

- Sensitive Receptors: Park and Ride Lot, McKinley Elementary School and Residential Properties
- Noise Mitigation Program
- Regulated material, On-site LSRP
- Pending addendum/change of plan for Flood Hazard Area Individual Permit





# Route 495 Advance ITS Project

- NJ 495 Westbound ITS Improvements
- Required for MPT during Rehabilitation Project
- PANYNJ owned and controlled facilities
- 5 DMS, 5 VSLS, 18 OLCS





Route 495, Route 1&9 /  
Paterson Plank Road Bridge  
Township of North Bergen, Town of Secaucus, and  
Union City, Hudson County

**Thank you!**  
**Questions?**

April 28, 2017



**GPI**  
Greenman-Pedersen, Inc.

