



***Community Advisory Committee Meeting #4***

# **I-295/I-76/Route 42 Direct Connection**

**November 25, 2003**

**Presented by: NJ Department of Transportation**

***Visit us at:* [www.state.nj.us/transportation/works/studies/rt295](http://www.state.nj.us/transportation/works/studies/rt295)**





**I-295/I-76/Route 42**  
**Direct Connection**  
Camden and Gloucester Counties

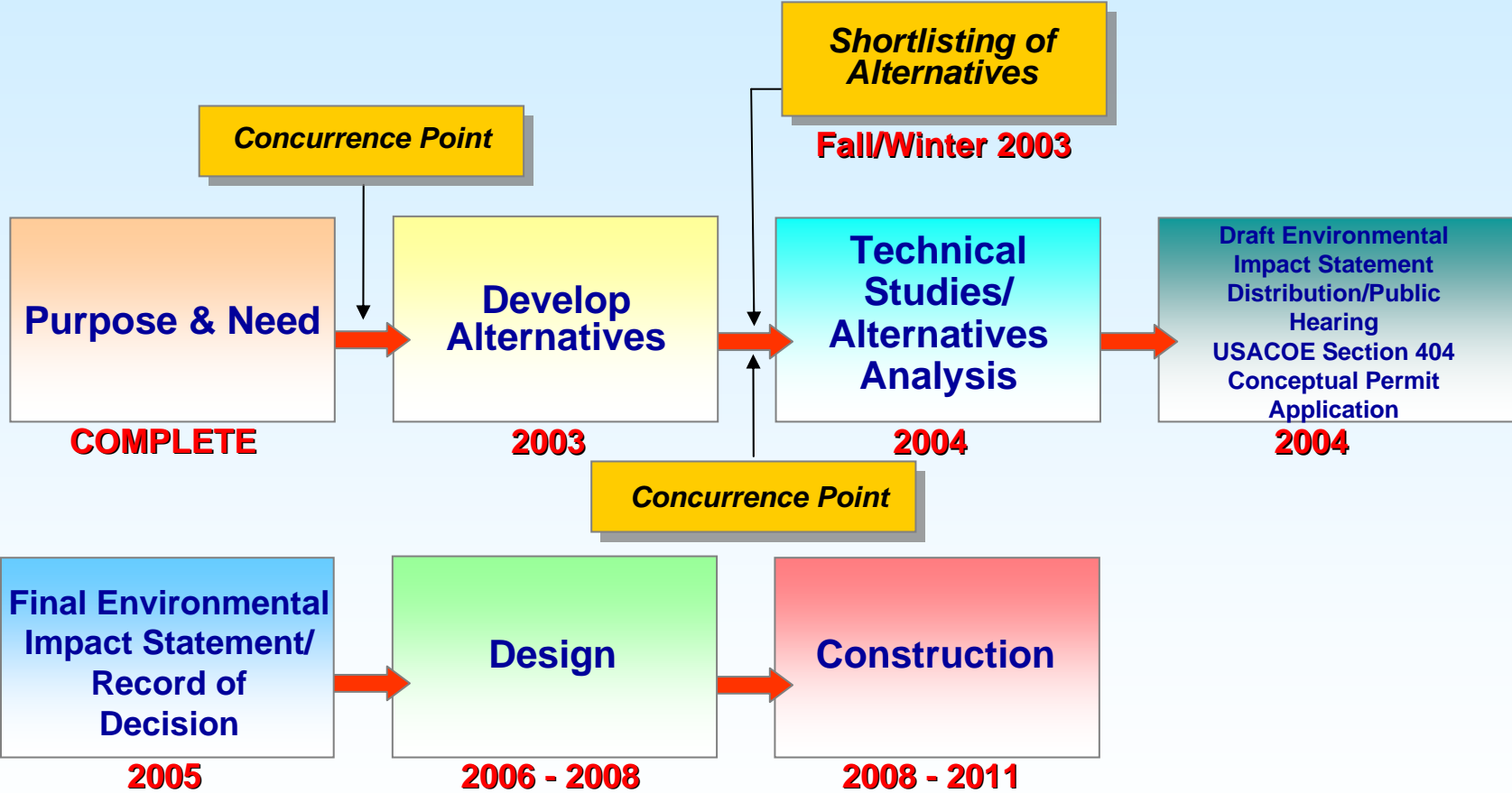
[www.state.nj.us/transportation/works/studies/rt295](http://www.state.nj.us/transportation/works/studies/rt295)

# PURPOSE & NEED

- **Improve traffic safety**
  - 🕒 Accident rates – over 4 times the statewide average
- **Reduce congestion**
  - 🕒 Identified by NJDOT as one of the 10 most congested locations in NJ
- **Meet driver's expectations**
  - 🕒 No direct connection for I-295 thru-traffic



# PROJECT SCHEDULE



# I-295/I-76/Route 42 Direct Connection

Camden and Gloucester Counties

[www.state.nj.us/transportation/works/studies/rt295](http://www.state.nj.us/transportation/works/studies/rt295)

## ALTERNATIVES

- **26 alternatives were developed to provide a direct connection for I-295 through traffic. Features common to all are:**
  - 👁️ **3 lanes on NB & SB I-295**
  - 👁️ **Full right and left shoulders**
  - 👁️ **2 lane ramps**
  - 👁️ **I-76/Route 42 express/local configuration removed**
  - 👁️ **I-295 speed limit: 55 MPH**
  - 👁️ **Ramps speed limit: 40 MPH**



**I-295/I-76/Route 42  
Direct Connection**  
Camden and Gloucester Counties

# CONSTRAINTS



**LEGEND**

- Wetlands (Approx.)
- Existing Resources
- Existing Roads & Shoulders
- Existing Structures  
(Bridges, Retaining Walls, Noise Walls)





# ALTERNATIVE SCREENING PROCESS- SHORTLISTED ALTERNATIVES AND RATIONALE

Ileana Ivanciu, Dewberry





# SELECTION CRITERIA

- **Constructibility**
- **Maintainability**
- **Compliance with Standard Design Criteria**
- **Comparison of Order of Magnitude Construction Cost**
- **Right-of-way Acquisition**
- **Wetlands Preservation**
- **Noise**
- **Air Quality**
- **Socioeconomic Conditions**
- **Environmental Justice**
- **Archaeological Resources**
- **Historic Resources**
- **Potential Hazardous/Contaminated Sites**





## Alternatives Screening

**OBJECTIVE** - Select a shortlist of feasible alternatives that satisfy the project purpose and need with minimal impacts to the natural and built environment to be studied through the EIS process





## Alternatives Screening Process

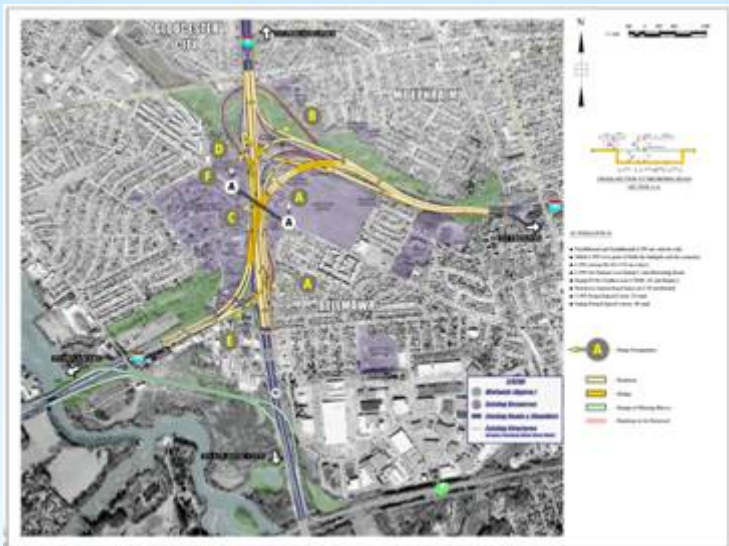
- Multidisciplinary Project Team
  - 👁 Engineers
  - 👁 Planners
  - 👁 Scientists
- Preliminary impact assessment by alternative – with respect to all screening criteria
- Two-day workshop
  - 👁 Fill out matrix
  - 👁 Integrate scores vertically by alternative
  - 👁 Compare alternatives
  - 👁 Recommend shortlist for further study



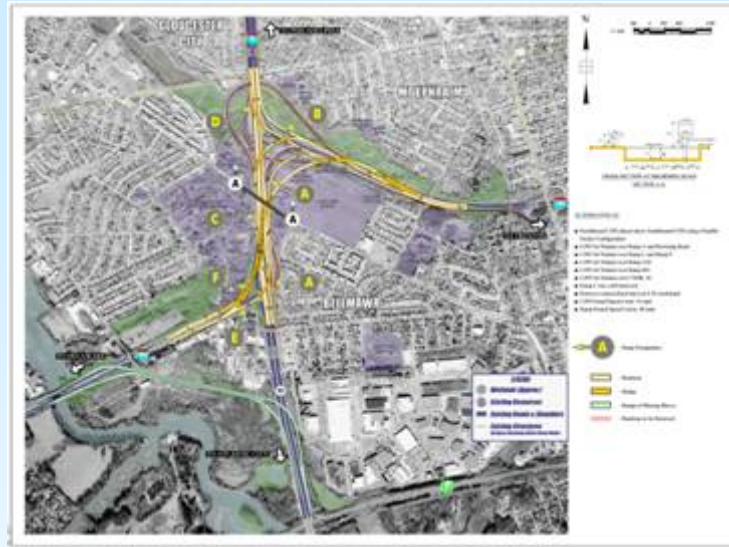
# I-295/I-76/Route 42 Direct Connection

Camden and Gloucester Counties

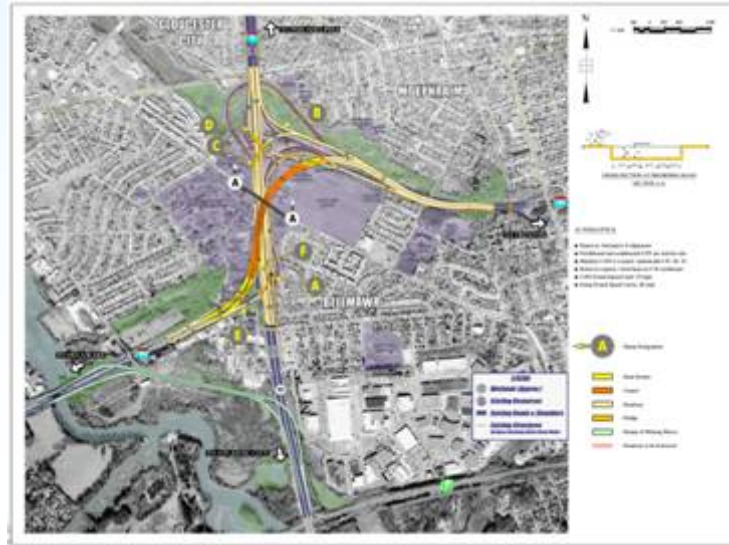
# Recommended Alternatives Project Team



Alternative D



Alternative G2



Alternative K



# I-295/I-76/Route 42 Direct Connection

Camden and Gloucester Counties

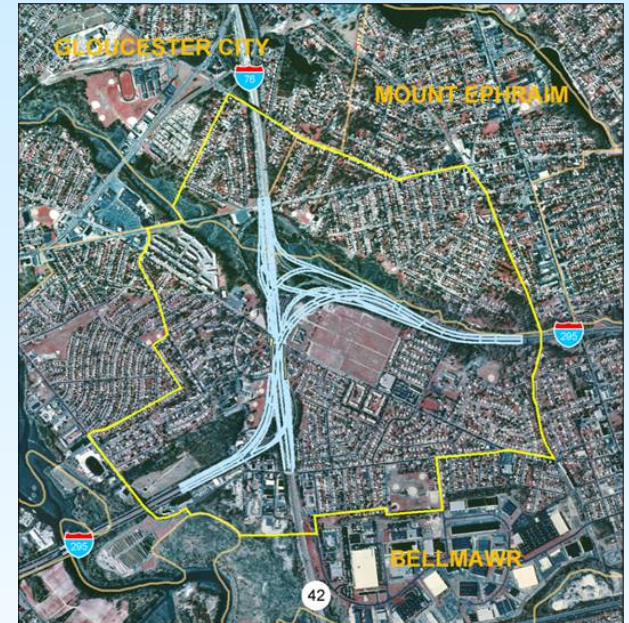
# Alternative D



Potential Residential and Commercial  
ROW Impacts  
Total Residences Impacted - 22  
Total Businesses Impacted - 8



Potential Community and Recreational  
ROW Impacts  
No Cemetery Plots Impacted  
1 Park Impacted  
Moderate School Impacts



Low Potential Socioeconomic Impacts



## I-295/I-76/Route 42 Direct Connection Camden and Gloucester Counties



Potential Wetlands Impacts – 8 Acres



Potential Floodplain Impacts – 6 Acres



# I-295/I-76/Route 42 Direct Connection

Camden and Gloucester Counties

# Alternative G2



Potential Residential and Commercial ROW Impacts  
 Total Residences Impacted - 22  
 Total Businesses Impacted - 10



Potential Community and Recreational ROW Impacts  
 No Cemetery Plots Impacted  
 1 Park Impacted  
 Low School Impacts



Potential Socioeconomic Impacts  
 Low Socioeconomic Impacts



## I-295/I-76/Route 42 Direct Connection Camden and Gloucester Counties



Potential Wetlands Impacts – 9 Acres



Potential Floodplain Impacts – 7 Acres



**I-295/I-76/Route 42  
Direct Connection**  
Camden and Gloucester Counties

**Alternative K**



Potential Residential and Commercial ROW Impacts  
 Total Residences Impacted - 30  
 Total Businesses Impacted - 10



Potential Community and Recreational ROW Impacts  
 No Cemetery Plots Impacted  
 1 Park Impacted  
 Moderate Schools Impacted



Low Potential Socioeconomic Impacts



## I-295/I-76/Route 42 Direct Connection Camden and Gloucester Counties



Potential Wetlands Impacts- 12 Acres



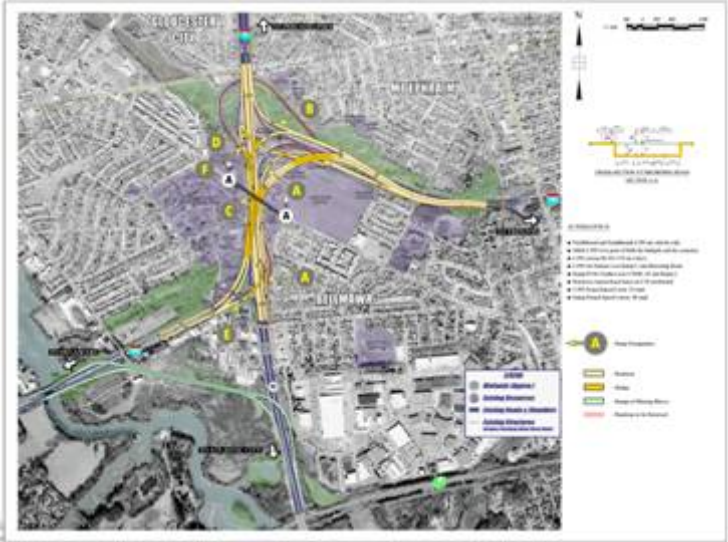
Potential Floodplain Impacts- 9.5 Acres



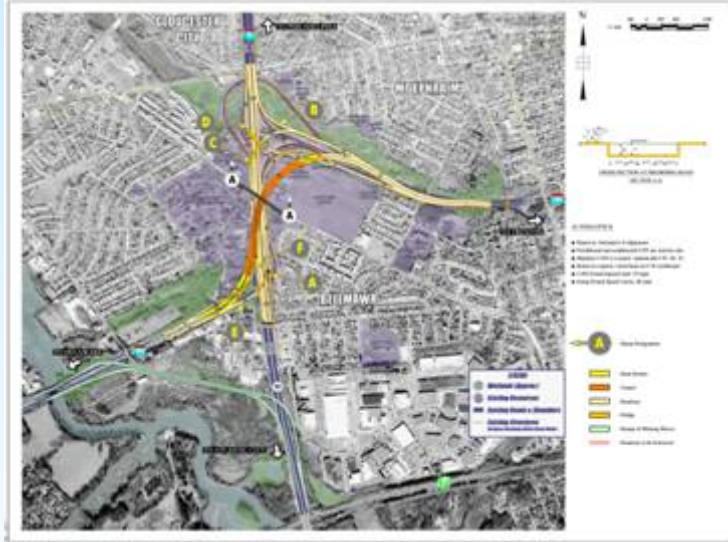


**I-295/I-76/Route 42  
Direct Connection**  
Camden and Gloucester Counties

**Recommended Alternatives  
NJDOT Core Group Meeting**



Alternative D

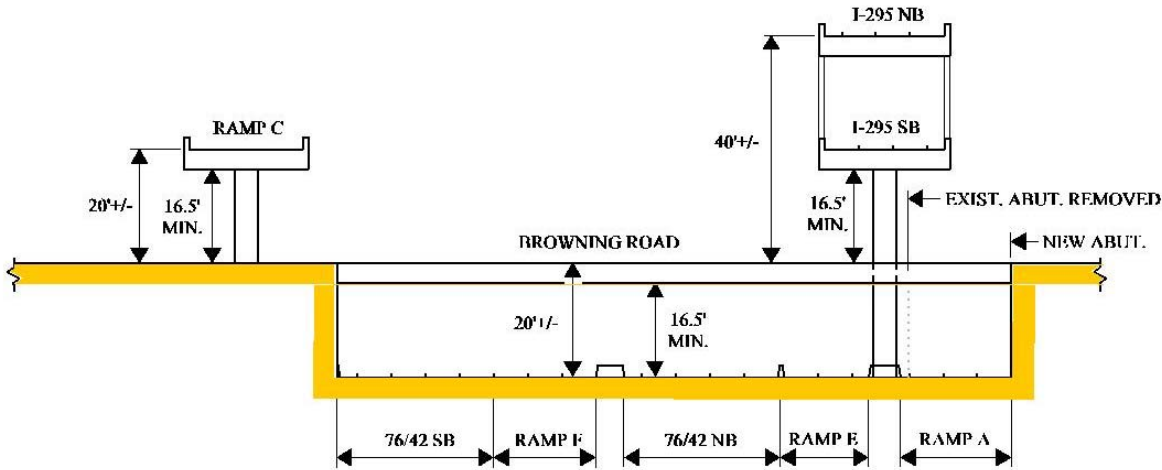
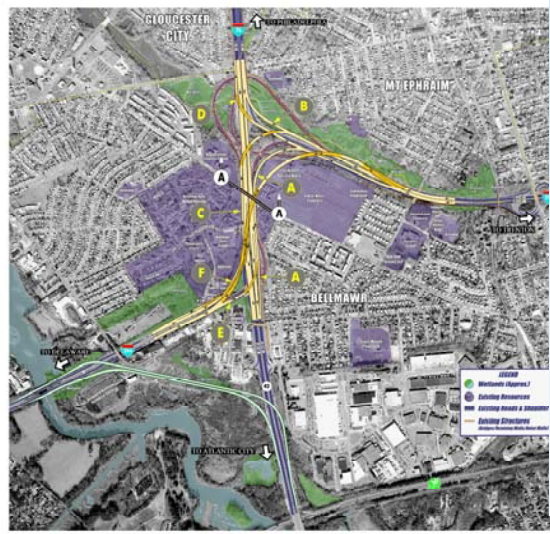


Alternative K



**I-295/I-76/Route 42  
Direct Connection**  
Camden and Gloucester Counties

**Recommended Alternatives  
NJDOT Core Group Meeting  
Alternative G2**

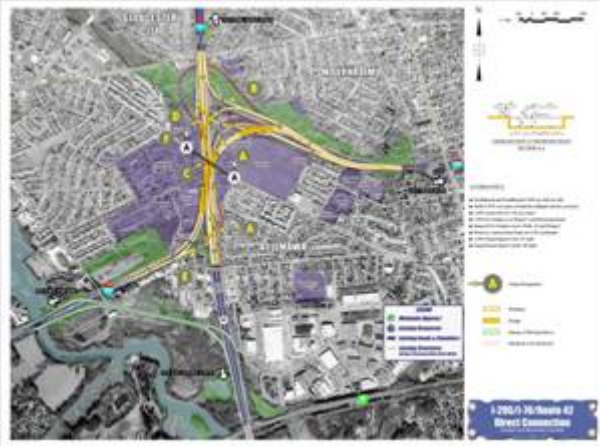


**CROSS-SECTION AT BROWNING ROAD**  
**SECTION A-A**

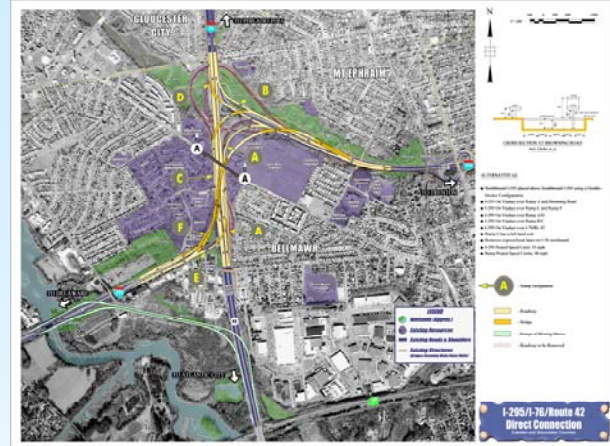


**I-295/I-76/Route 42  
Direct Connection**  
Camden and Gloucester Counties

**Recommended Alternatives  
Agency Coordination Meeting**



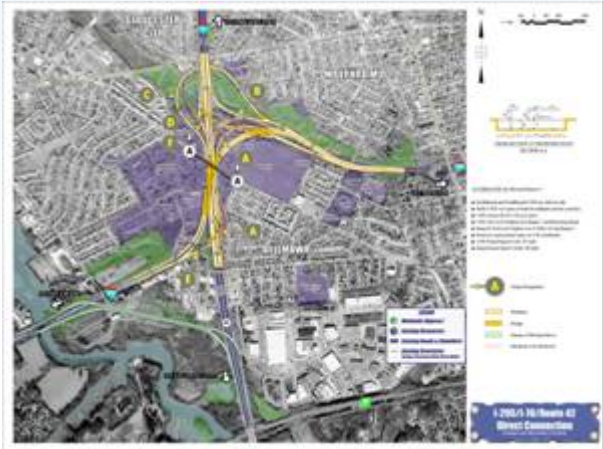
Alternative D



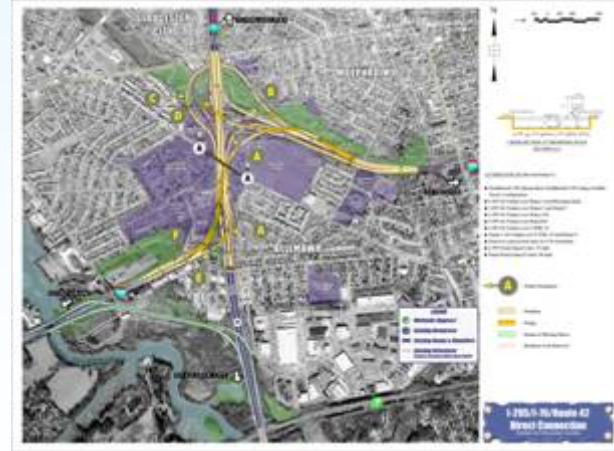
Alternative G2



Alternative K



Alternative D1



Alternative H1



**I-295/I-76/Route 42  
Direct Connection**  
Camden and Gloucester Counties

# Potential Residential and Commercial ROW Impacts



Alternative D  
Total Residences Impacted - 22  
Total Businesses Impacted - 8

Alternative D1  
Total Residences Impacted - 24  
Total Businesses Impacted - 9



# I-295/I-76/Route 42 Direct Connection

Camden and Gloucester Counties

# Potential Community and Recreational ROW Impacts



Alternative D  
No Cemetery Plots Impacted  
1 Park Impacted  
Moderate Impacts on Schools

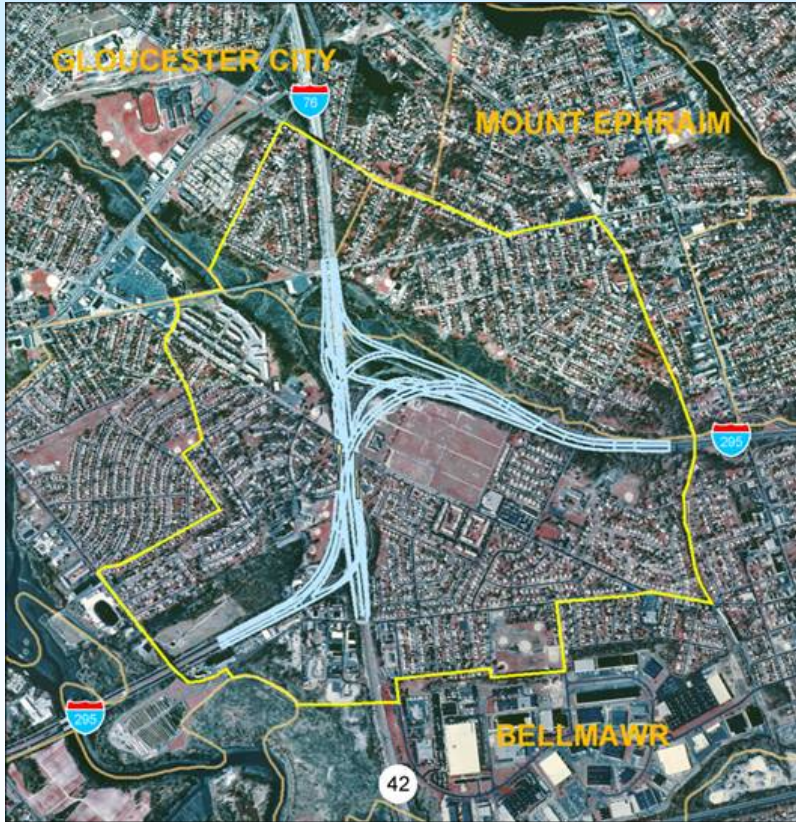


Alternative D1  
No Cemetery Plots Impacted  
2 Park Impacted  
Moderate Impact on Schools

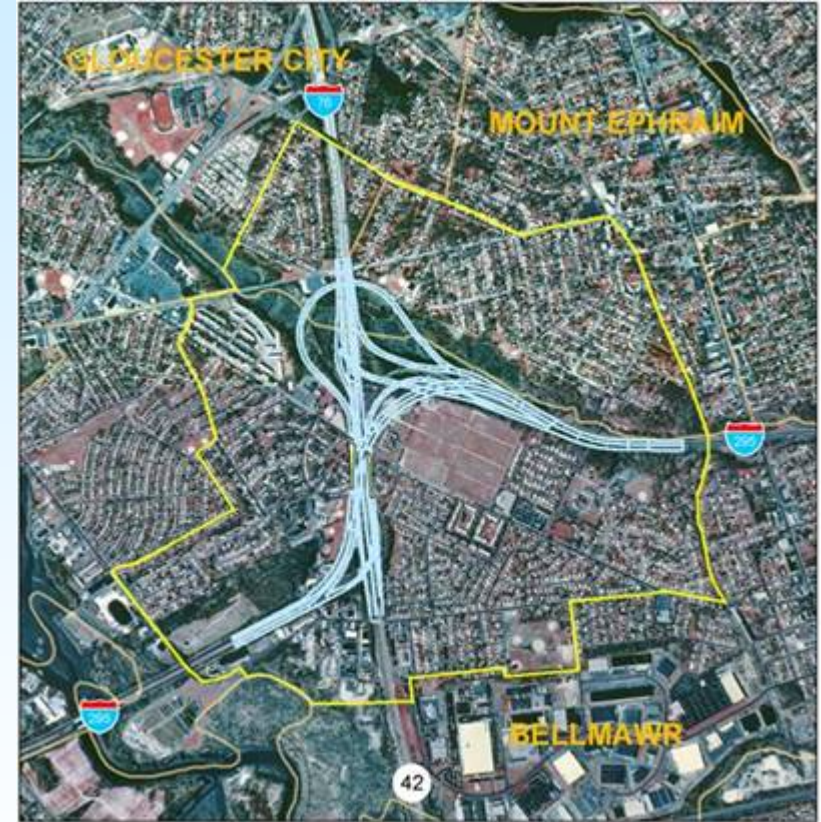


# Potential Socioeconomic Impacts

**I-295/I-76/Route 42  
Direct Connection**  
Camden and Gloucester Counties



Alternative D  
Low Potential Impacts



Alternative D1  
Low Potential Impacts



**I-295/I-76/Route 42  
Direct Connection**  
Camden and Gloucester Counties

# Potential Floodplain Impacts Alternative D1



Alternative D  
Potential Impacts – 6 Acres

Alternative D1  
Potential Impacts – 13.5 Acres



**I-295/I-76/Route 42  
Direct Connection**  
Camden and Gloucester Counties

# Potential Wetland Impacts



Alternative D  
Potential Impacts – 8 Acres



Alternative D1  
Potential Impacts – 11.5 Acres





**I-295/I-76/Route 42  
Direct Connection**  
Camden and Gloucester Counties

# Potential Residential and Commercial ROW Impacts



Alternative G2  
Total Residences Impacted - 22  
Total Businesses Impacted - 10



Alternative H1  
Total Residences Impacted - 32  
Total Businesses Impacted - 10



**I-295/I-76/Route 42  
Direct Connection**  
Camden and Gloucester Counties

**Potential Community and  
Recreational ROW Impacts**



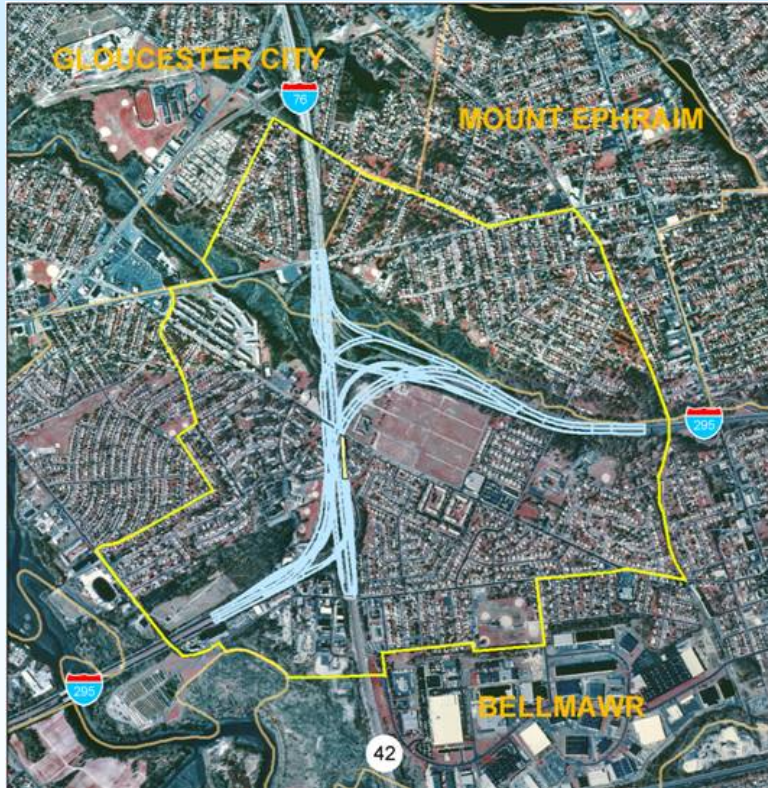
Alternative G2  
No Cemetery Plots Impacted  
1 Park Impacted  
Low Impact on Schools

Alternative H1  
No Cemetery Plots Impacted  
2 Park Impacted  
Moderate Impact on Schools



# Potential Socioeconomic Impacts

**I-295/I-76/Route 42  
Direct Connection**  
Camden and Gloucester Counties



Alternative G2  
Low Potential Impacts



Alternative H1  
Low Potential Impacts



**I-295/I-76/Route 42  
Direct Connection**  
Camden and Gloucester Counties

# Potential Floodplain Impacts



Alternative G2  
Potential Impacts – 7 Acres



Alternative H1  
Potential Impacts – 12.5 Acres



**I-295/I-76/Route 42  
Direct Connection**  
Camden and Gloucester Counties

# Potential Wetlands Impacts



Alternative G2  
Potential Impacts – 9 Acres

Alternative H1  
Potential Impacts – 11.5 Acres



**I-295/I-76/Route 42  
Direct Connection**  
Camden and Gloucester Counties

# Alternatives Dismissed from Further Study



Alternative E  
Total Residences Impacted- 189  
Total Businesses Impacted – 11  
High Socioeconomic Impacts  
Total Wetlands Impacts – 4.5  
Total Floodplain Impacts – 3.5



Alternative E2  
Total Residences Impacted - 190  
Total Businesses Impacted – 12  
High Socioeconomic Impacts  
Total Wetlands Impacts – 8.5  
Total Floodplain Impacts - 11



# I-295/I-76/Route 42 Direct Connection

Camden and Gloucester Counties

# Alternatives Dismissed from Further Study



Alternative I  
Total Residences Impacted - 53  
Total Businesses Impacted - 11  
High Socioeconomic Impacts  
Total Wetlands Impacts - 2.5 Acres  
Total Floodplain Impacts - 2 Acres



Alternative I1  
Total Residences Impacted - 55  
Total Businesses Impacted - 11  
High Socioeconomic Impacts  
Total Wetlands Impacts - 7 Acres  
Total Floodplain Impacts - 10



# I-295/I-76/Route 42 Direct Connection

Camden and Gloucester Counties

## Alternatives Dismissed from Further Study



Alternative J  
Total Residences Impacted- 54  
Total Businesses Impacted- 10  
Moderate Socioeconomic Impacts  
Total Wetlands Impacts- 15.5 Acres  
Total Floodplain Impacts- 24 Acres



Alternative L  
Total Residences Impacted- 32  
Total Businesses Impacted- 10  
Low Socioeconomic Impacts  
Total Wetlands Impacts- 17 Acres  
Total Floodplain Impacts- 16.5 Acres





**I-295/I-76/Route 42  
Direct Connection**  
Camden and Gloucester Counties

**Alternatives Dismissed from  
Further Study**



Alternative A  
 Total Residences Impacted- 49  
 Total Businesses Impacted- 9  
 Moderate Socioeconomic Impacts  
 Total Wetland Impacts- 17 Acres  
 Total Floodplain Impacts- 16.5 Acres



Alternative A1  
 Total Residences Impacted- 49  
 Total Businesses Impacted- 9  
 Moderate Socioeconomic Impacts  
 Total Wetlands Impacts- 21 Acres  
 Total Floodplain Impacts- 23.5 Acres



Alternative A2 – 23.5 Acres  
 Total Residences Impacted- 49  
 Total Businesses Impacted- 9  
 Moderate Socioeconomic Impacts  
 Total Wetlands Impacts - 20.5 Acres  
 Total Floodplain Impacts- 20.5 Acres



**I-295/I-76/Route 42  
Direct Connection**  
Camden and Gloucester Counties

**Alternatives Dismissed from  
Further Study**



**Alternative B**  
 Total Residences Impacted- 56  
 Total Businesses Impacted- 10  
 Moderate Socioeconomic Impacts  
 Total Wetlands Impacts- 12.5 Acres  
 Total Floodplain Impacted- 20 Acres



**Alternative B1**  
 Total Residences Impacted- 58  
 Total Businesses Impacted- 10  
 Moderate Socioeconomic Impacts  
 Total Wetlands Impacts- 13.5 Acres  
 Total Floodplain Impacted- 22 Acres



**Alternative B2**  
 Total Residences Impacted- 73  
 Total Businesses Impacted- 10  
 Moderate Socioeconomic Impacts  
 Total Wetlands Impacts- 16.5 Acres  
 Total Floodplain Impacts- 29 Acres



**I-295/I-76/Route 42  
Direct Connection**  
Camden and Gloucester Counties

**Alternatives Dismissed from  
Further Study**



Alternative C  
 Total Residences Impacted- 34  
 Total Businesses Impacted- 8  
 Low Socioeconomic Impacts  
 Total Wetlands Impacts- 11.5 Acres  
 Total Floodplain Impacts- 21 Acres



Alternative C1  
 Total Residences Impacted- 36  
 Total Businesses Impacts- 8  
 Low Socioeconomic Impacts  
 Total Wetlands Impacts- 16 Acres  
 Total Floodplain Impacts- 28 Acres



Alternative C2  
 Total Residences Impacted- 33  
 Total Business Impacted – 9  
 Low Socioeconomic Impacts  
 Total Wetlands Impacts- 15 Acres  
 Total Floodplain Impacts- 27.5 Acres



**I-295/I-76/Route 42  
Direct Connection**  
Camden and Gloucester Counties

**Alternatives Dismissed from  
Further Study**



Alternative F  
 Total Residences Impacted- 24  
 Total Business Impacted – 9  
 Low Socioeconomic Impacts  
 Total Wetlands Impacted- 16 Acres  
 Total Floodplain Impacted- 16 Acres



Alternative F1  
 Total Residences Impacted- 26  
 Total Businesses Impacted- 9  
 Low Socioeconomic Impacts  
 Total Wetlands Impacts- 20.5 Acres  
 Total Floodplain Impacts- 23 Acres



Alternative F2  
 Total Residential Impacted- 22  
 Total Businesses Impacted- 9  
 Low Socioeconomic Impacts  
 Total Wetlands Impacts- 20.5 Acres  
 Total Floodplain Impacts- 21 Acres



## Alternatives Screening

- Informed qualitative decision-making approach
- Iterative
- Consensus amongst stakeholders
  - ☯ Project team members
  - ☯ DOT core group
  - ☯ LOB, CAC, ACM
  - ☯ Impacted Communities
  - ☯ Traveling motorists

