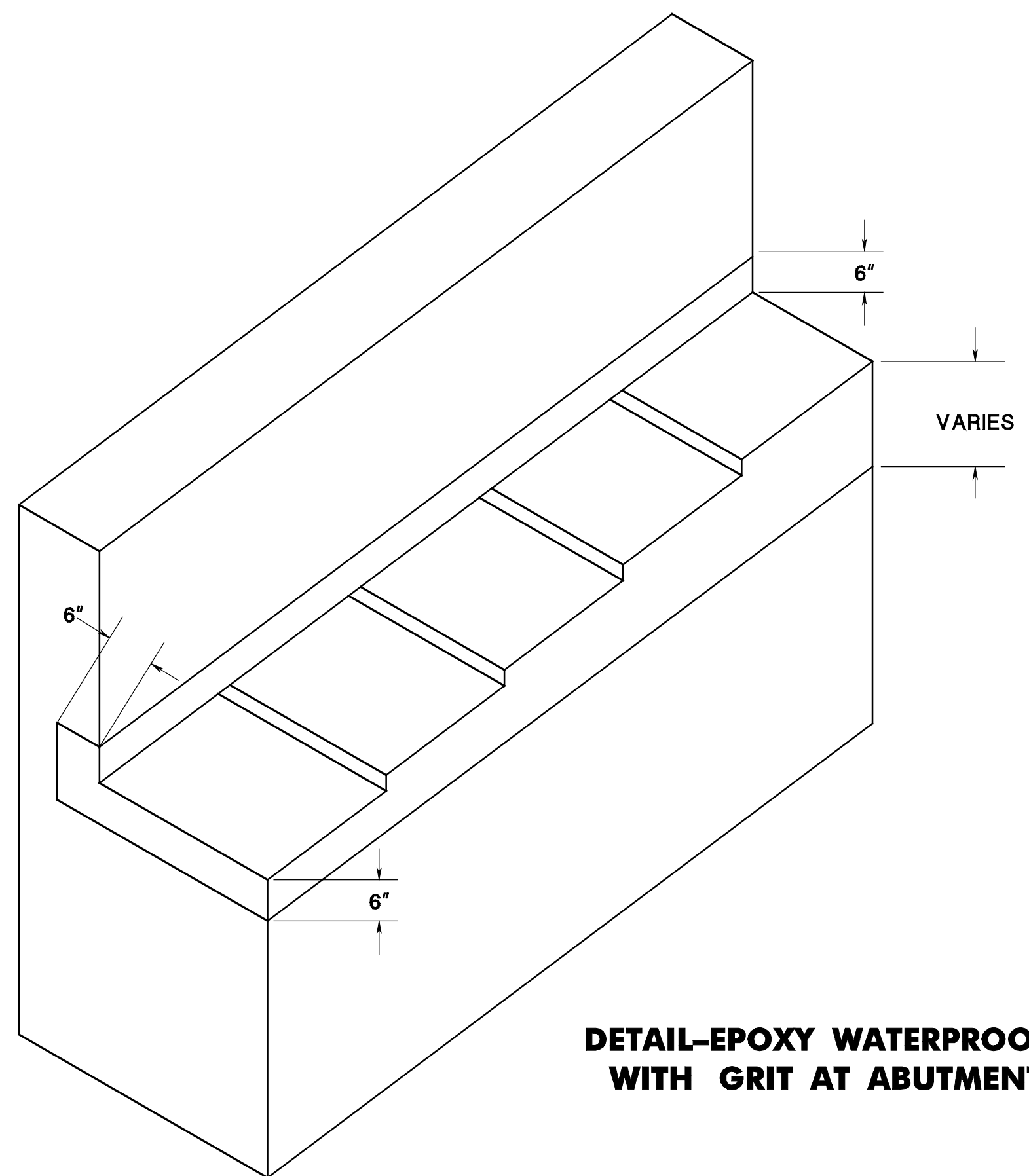
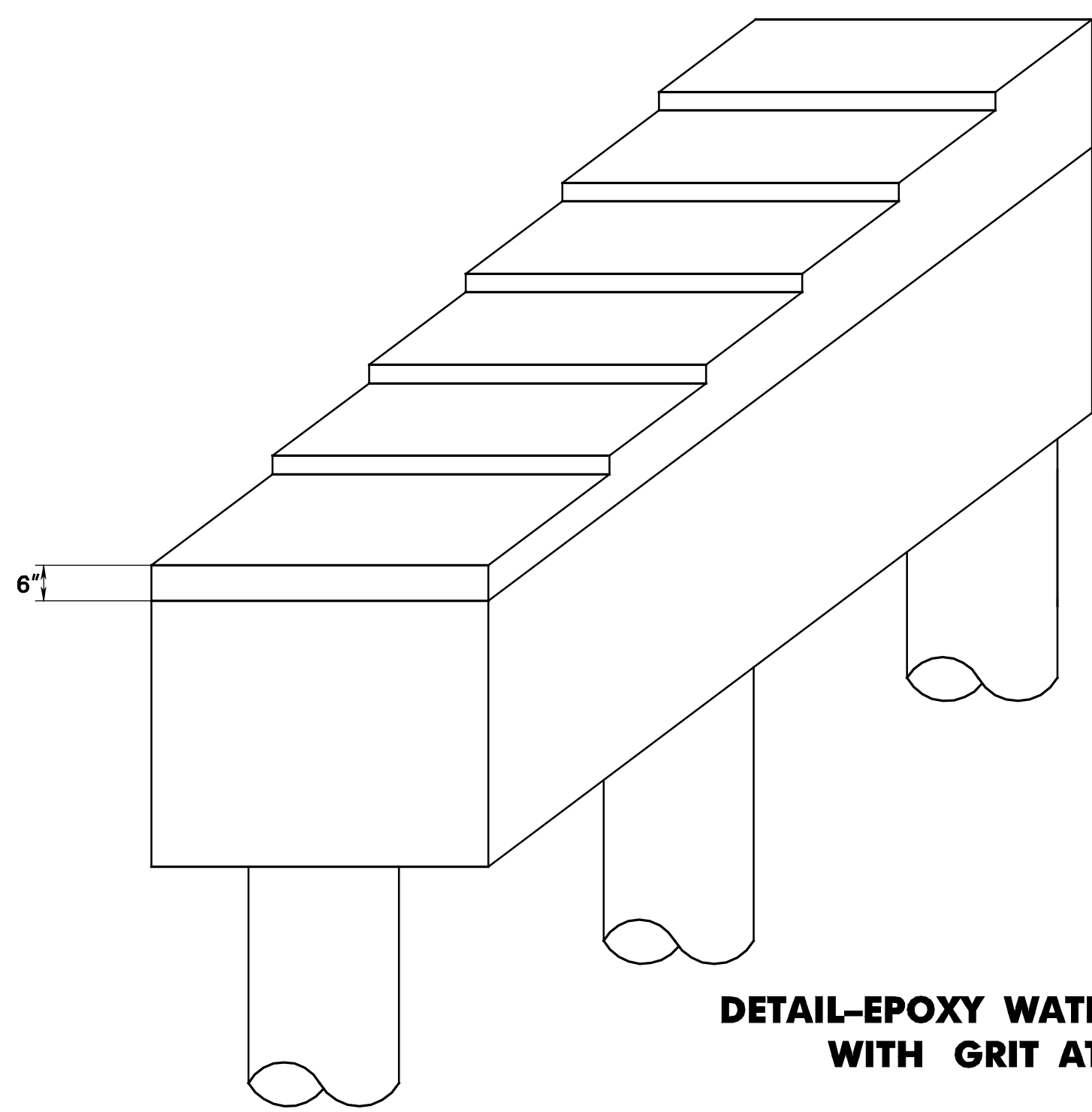


pen table = Y:\NJDOT\TWS\Projects\NJDOT\Eng\TJ\A\TJ\A\Non-Roadway\brdges.tbl  
 scale = 0.0833331000000  
 date = 17\_DEC\_2007\_09:58  
 ID = TPXBHAY  
 BCD-504-4 ORIGINAL SHEET

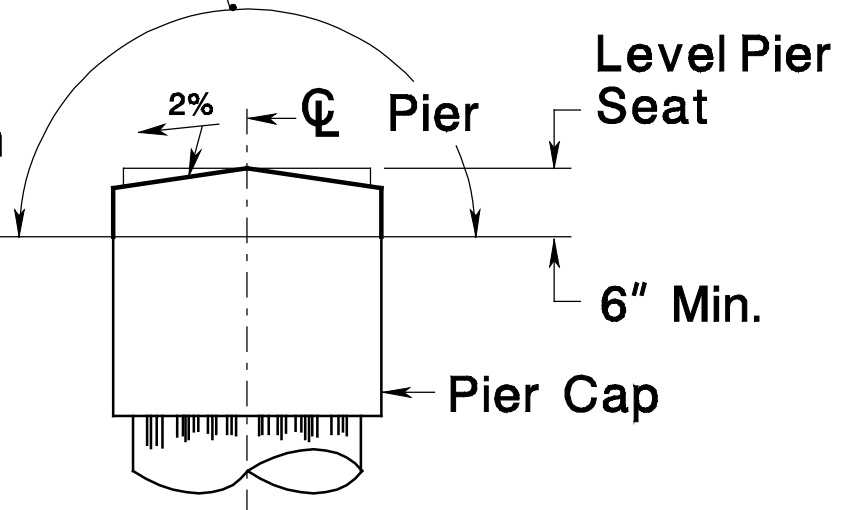


**DETAIL-EPOXY WATERPROOFING WITH GRIT AT ABUTMENTS**

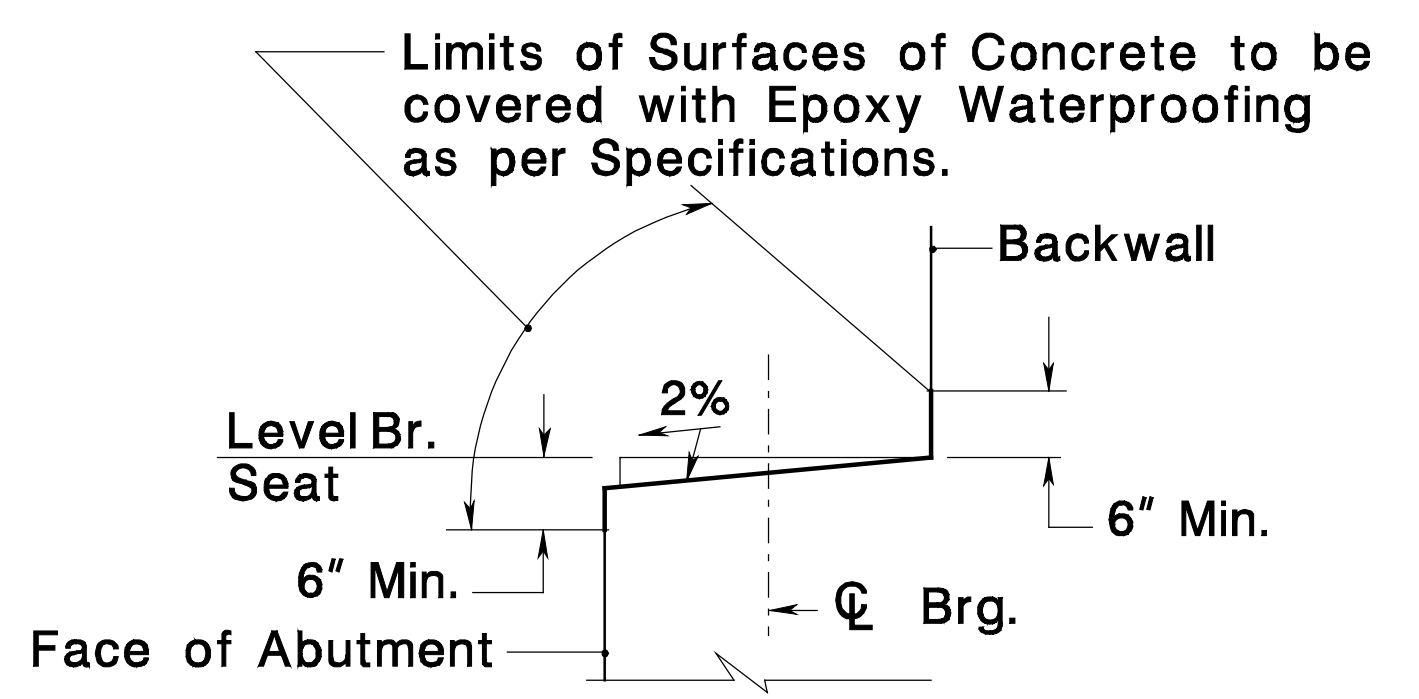


**DETAIL-EPOXY WATERPROOFING WITH GRIT AT PIERS**

**Epoxy Limits**  
 1. Full length for Simple Span.  
 2. From end of Pier Cap to 2'-0" inside the centerline of each Fascia Stringer for continuous deck.

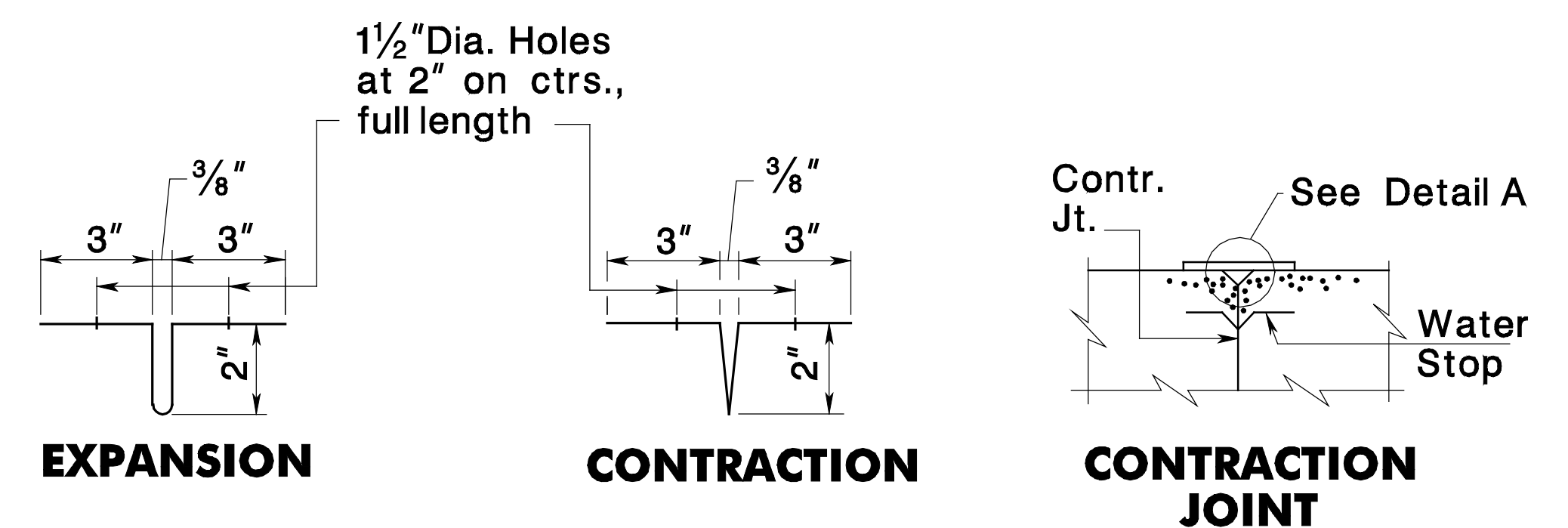


**LIMITS AT PIER**



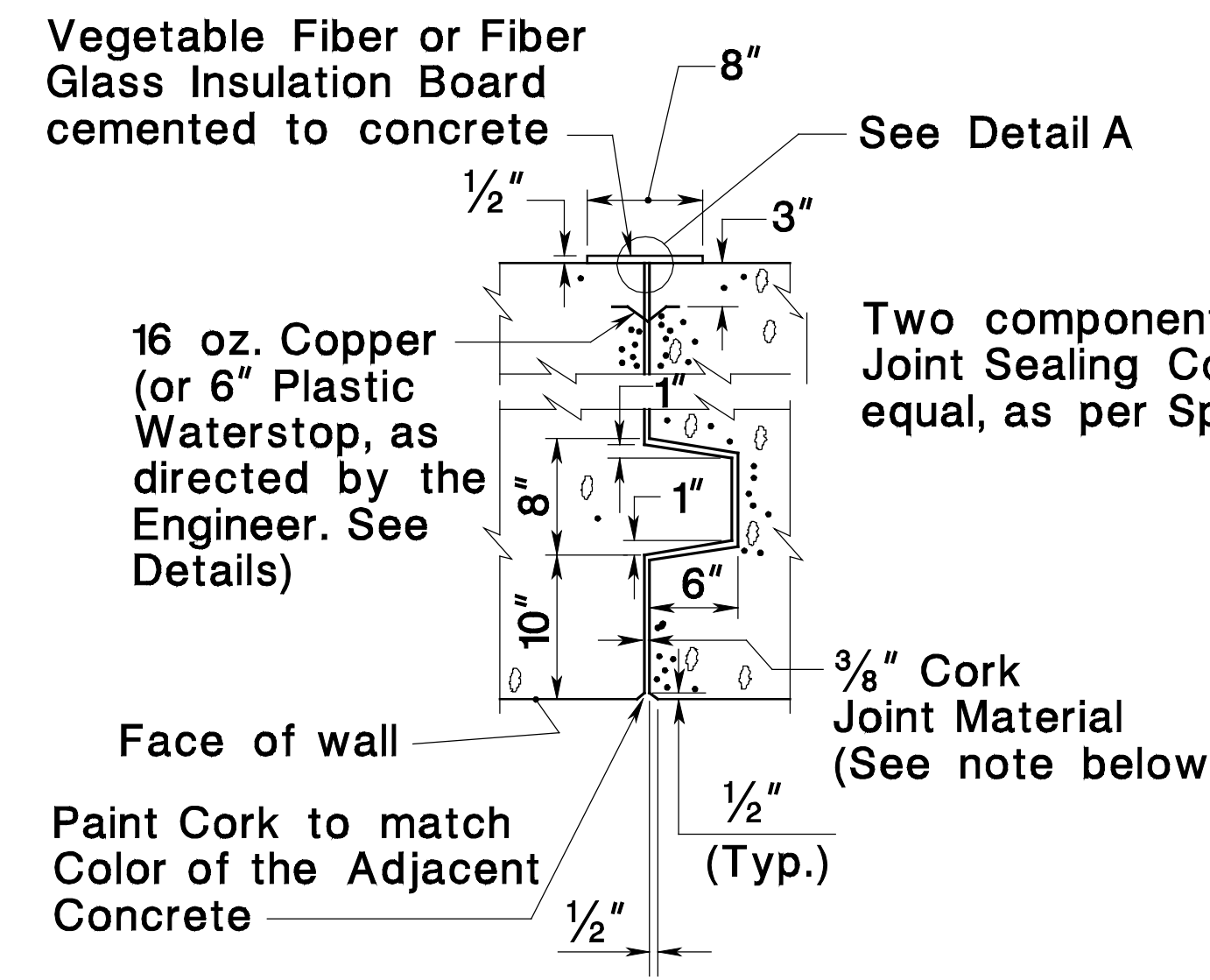
**LIMITS AT ABUTMENT**

BCD-504-4.1



**16 OZ. COPPER WATERSTOP-10" WIDE**

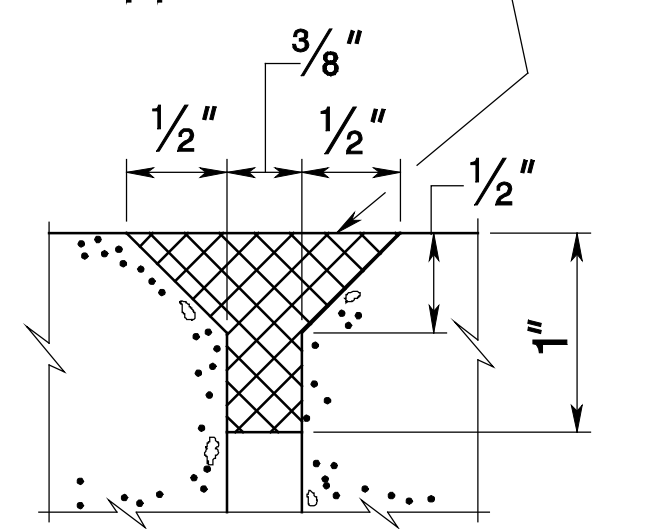
BCD-504-4.2



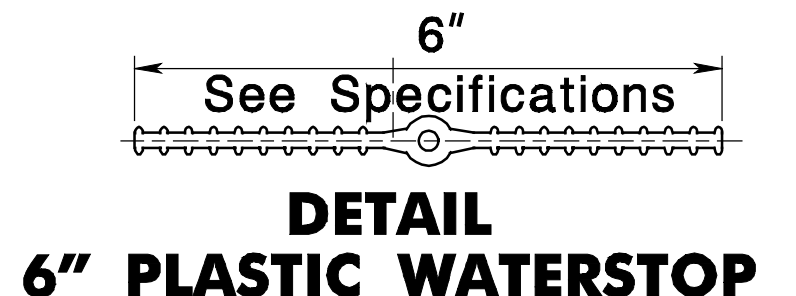
**SECTION - WALL JOINT**

Cork Joint Material: conforming to AASHTO Specifications, Designation M153, Type 2, where joint is noted as Expansion Joint. Contraction Joints shall be tight and shall be paraffin coated.

**DETAILS OF WATERSTOP**



**DETAIL A SEALER**



**DETAIL 6" PLASTIC WATERSTOP**

BCD-504-4.3

**TYPICAL DETAILS NO. 2**

N.T.S.

NEW JERSEY DEPARTMENT OF TRANSPORTATION  
 BUREAU OF STRUCTURAL ENGINEERING

**BRIDGE CONSTRUCTION DETAILS**

BCD-504-4