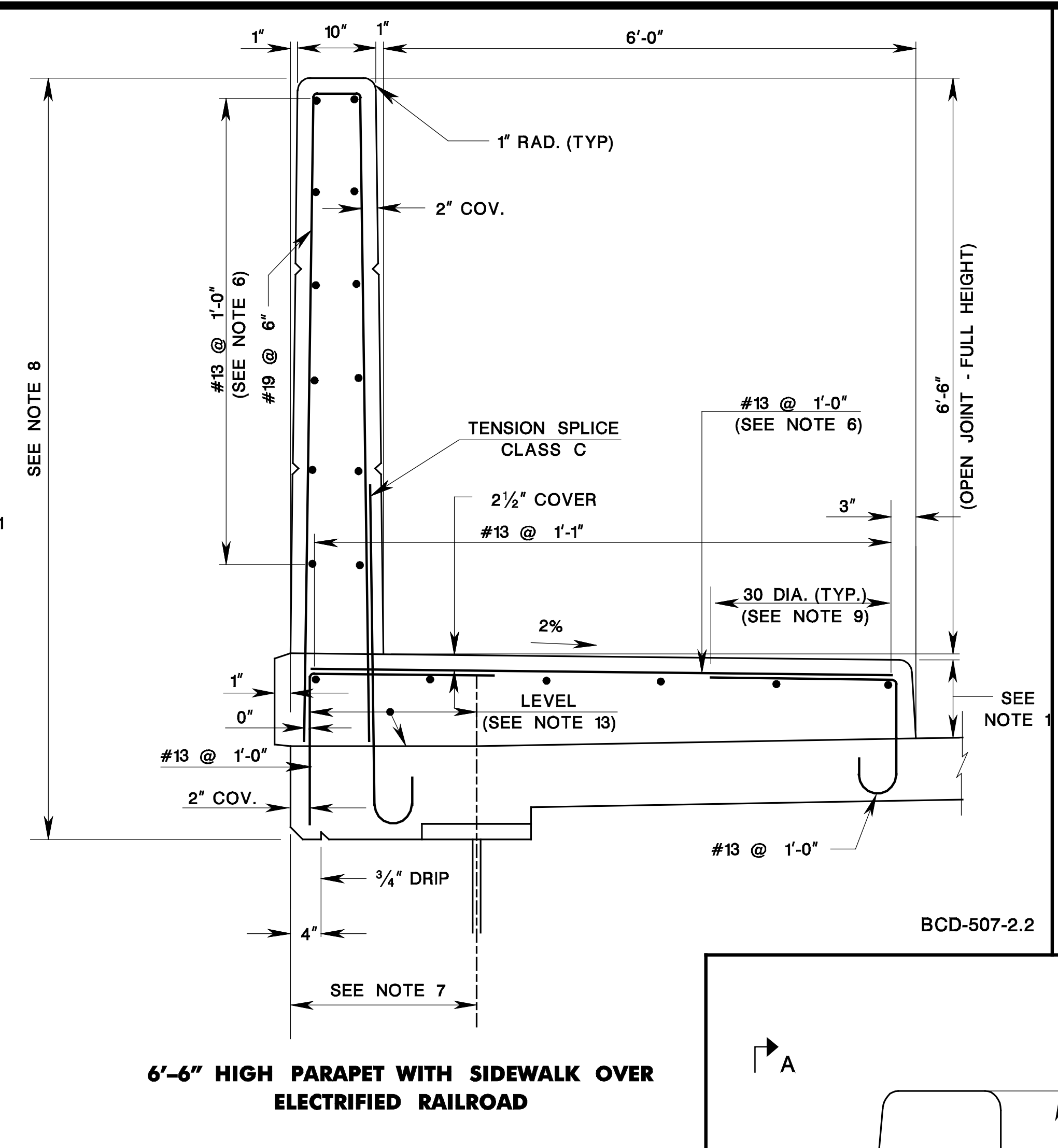


**2'-8" HIGH PARAPET WITH SIDEWALK**

BCD-507-2.1

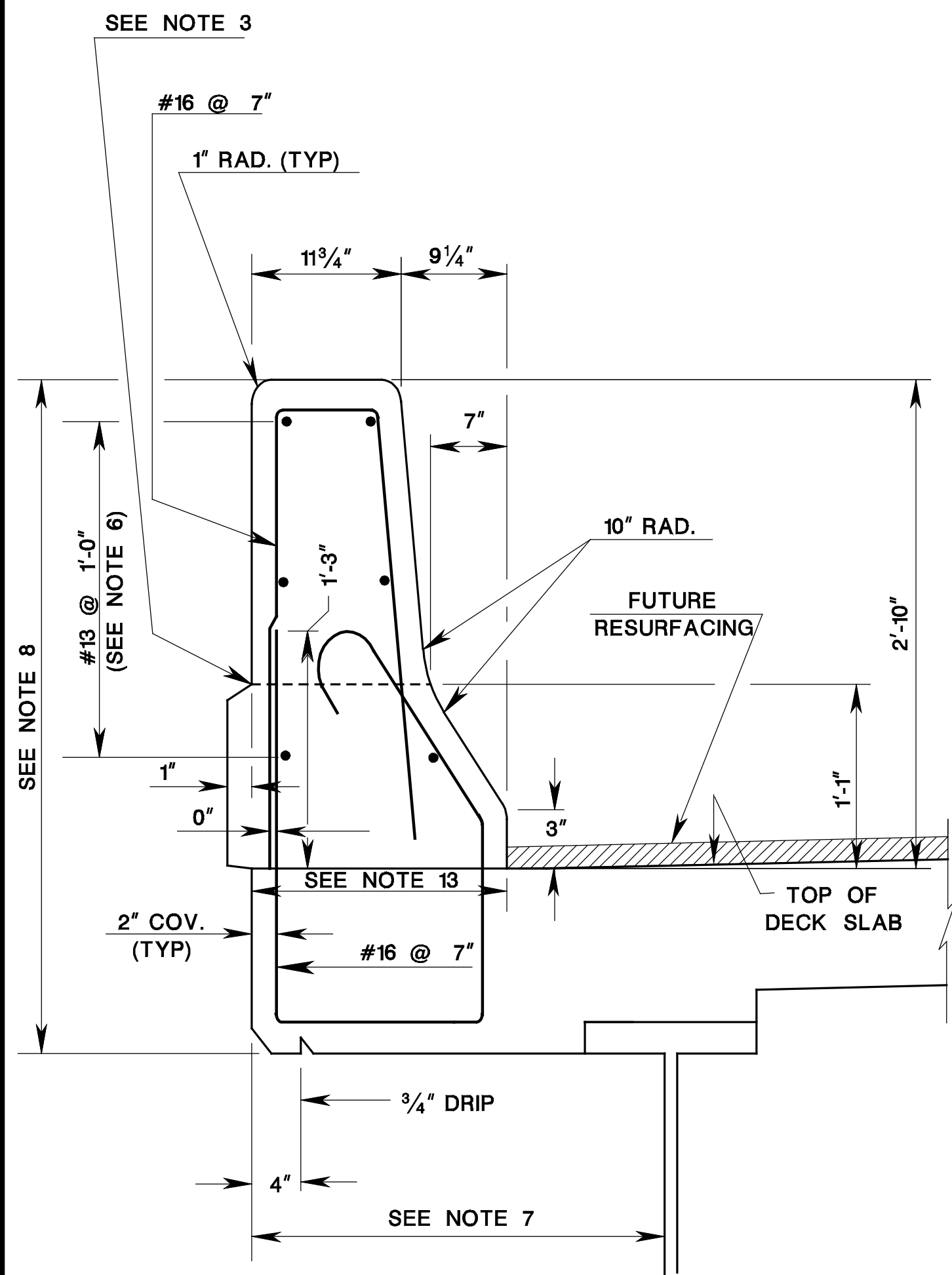


**6'-6" HIGH PARAPET WITH SIDEWALK OVER ELECTRIFIED RAILROAD**

BCD-507-2.2

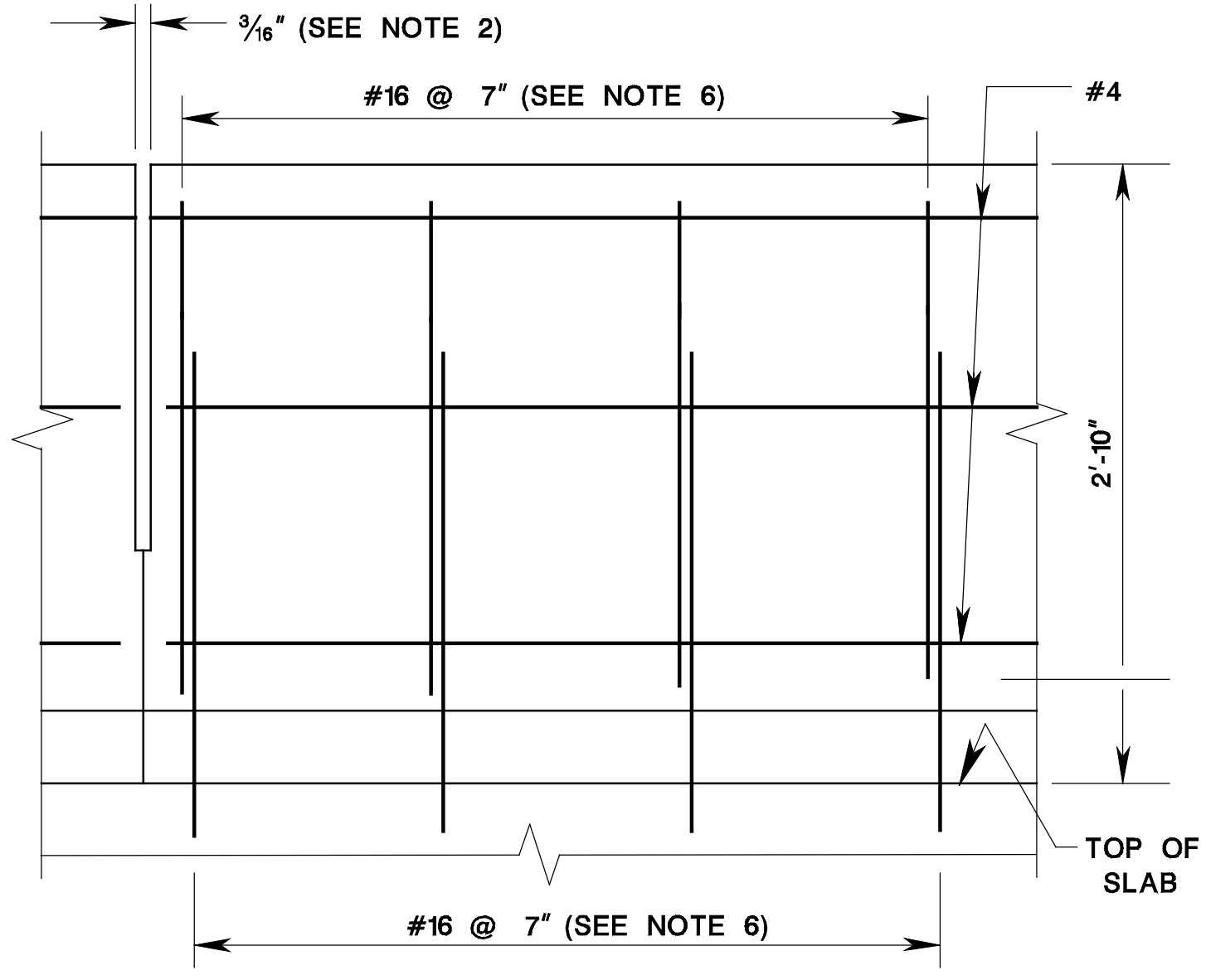
**NOTES:**

- 1 CURB HEIGHT TO MATCH ROADWAY APPROACH CURB.
- 2 3/16" OPEN DEFLECTION JOINT SHALL BE PROVIDED IN PARAPETS AT INTERVALS NOT EXCEEDING 20'-0" AND CONTRACTION JOINTS SHALL BE PROVIDED AT THE MIDPOINT BETWEEN THE OPEN JOINTS.
- 3 THE 3/16" OPEN JOINT SHALL STOP AT THE LINE INDICATED AND A CONTRACTION JOINT SHALL BE PROVIDED BELOW THAT LINE.
- 4 CONTRACTION JOINTS SHALL BE PROVIDED IN SIDEWALKS AT LOCATIONS OF 3/16" OPEN PARAPET DEFLECTION JOINTS.
- 5 FULL DEPTH JOINTS SHALL BE PROVIDED AT LOCATION OF TRANSVERSE DECK JOINTS. THE FULL DEPTH JOINT OPENING WIDTH SHALL EQUAL THE TRANSVERSE DECK JOINT OPENING WIDTH.
- 6 ALL REINFORCEMENT STEEL IN PARAPET AND SIDEWALK SHALL BE CORROSION PROTECTED.
- 7 PREFERRED MAXIMUM OVERHANG 2'-6". PERMANENT METAL STAY-IN-PLACE FORMS NOT PERMITTED IN THIS AREA.
- 8 FASCIA RUSTICATION AND CONFIGURATION AS PER NJDOT STANDARD SPECIFICATIONS.
- 9 AS AN OPTION, THE CONTRACTOR MAY ELIMINATE SPLICES AT EACH END OF THE TOP TRANSVERSE REINFORCEMENT STEEL IN SIDEWALKS BY PROVIDING A SINGLE BAR OF THE SAME CONFIGURATION WITH HOOKS AT EACH END, EMBEDDED IN THE DECK SLAB.
- 10 IF CONDUITS ARE USED WITHIN THE PARAPET, PROVIDE A SLEEVE OF SUFFICIENT LENGTH TO ACCOMMODATE MAXIMUM EXPANSION AND CONTRACTION OF THE EXPANSION JOINT.
- 11 IN CONSIDERING THE HEIGHT OF THE PARAPET AND RAILING COMBINATION, THE MINIMUM HEIGHT SHALL BE 4'-6" FOR BICYCLE TRAFFIC AND 3'-6" FOR PEDESTRIAN TRAFFIC.
- 12 FOR ADDITIONAL REINFORCEMENT STEEL THAT IS REQUIRED IN THE VICINITY OF PARAPET JOINTS TO PREVENT CONCRETE CRACKING IN THE OVERHANG PORTIONS OF THE DECK SLAB, SEE "DETAIL 1."
- 13 THE BRIDGE DECK PORTION UNDER THE PARAPET SHALL BE POURED LEVEL.
- 14 ALL REINFORCEMENT STEEL IS DESIGNATED IN METRIC UNITS.

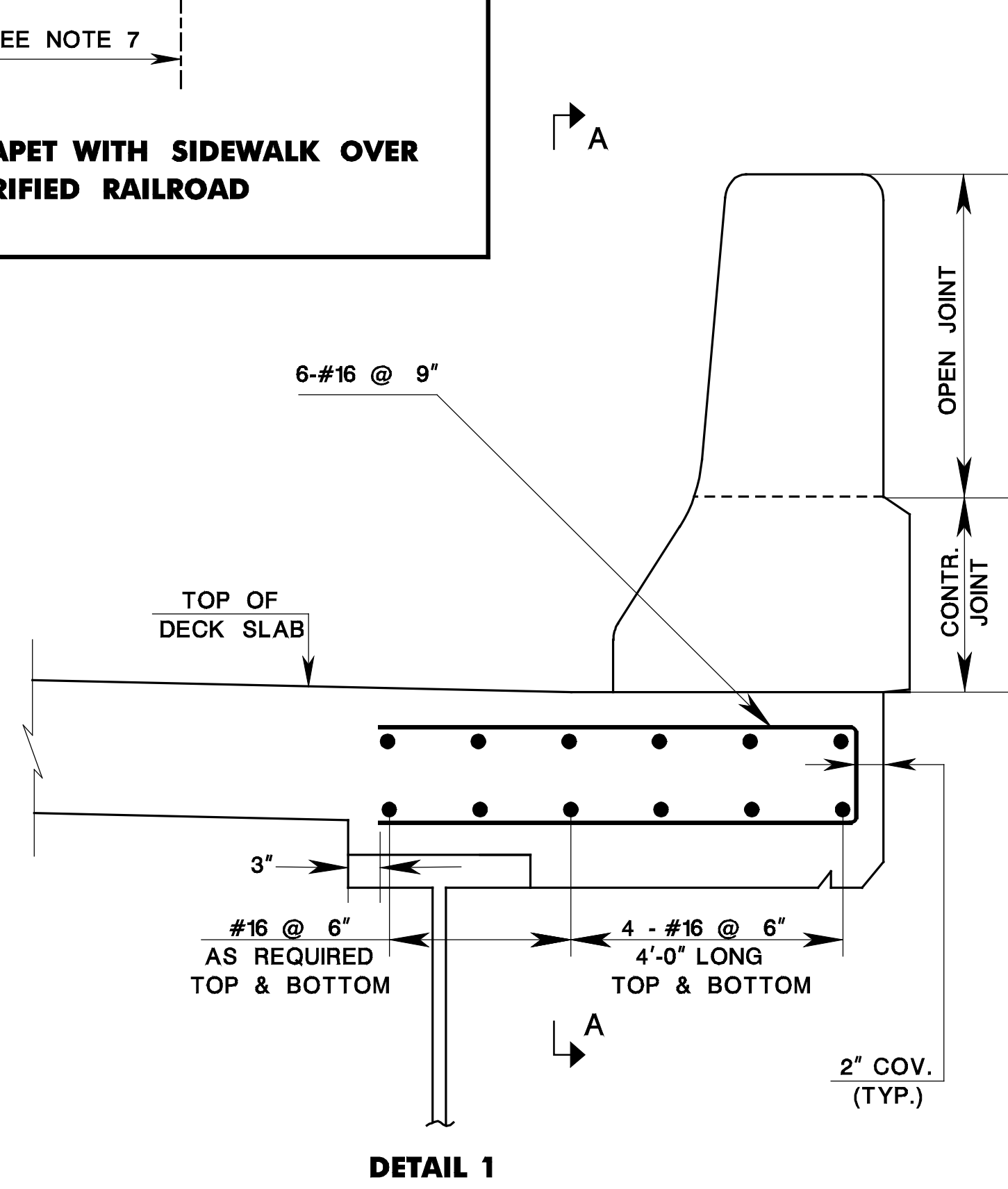


**2'-10" HIGH PARAPET WITH BARRIER CURB**

BCD-507-2.4

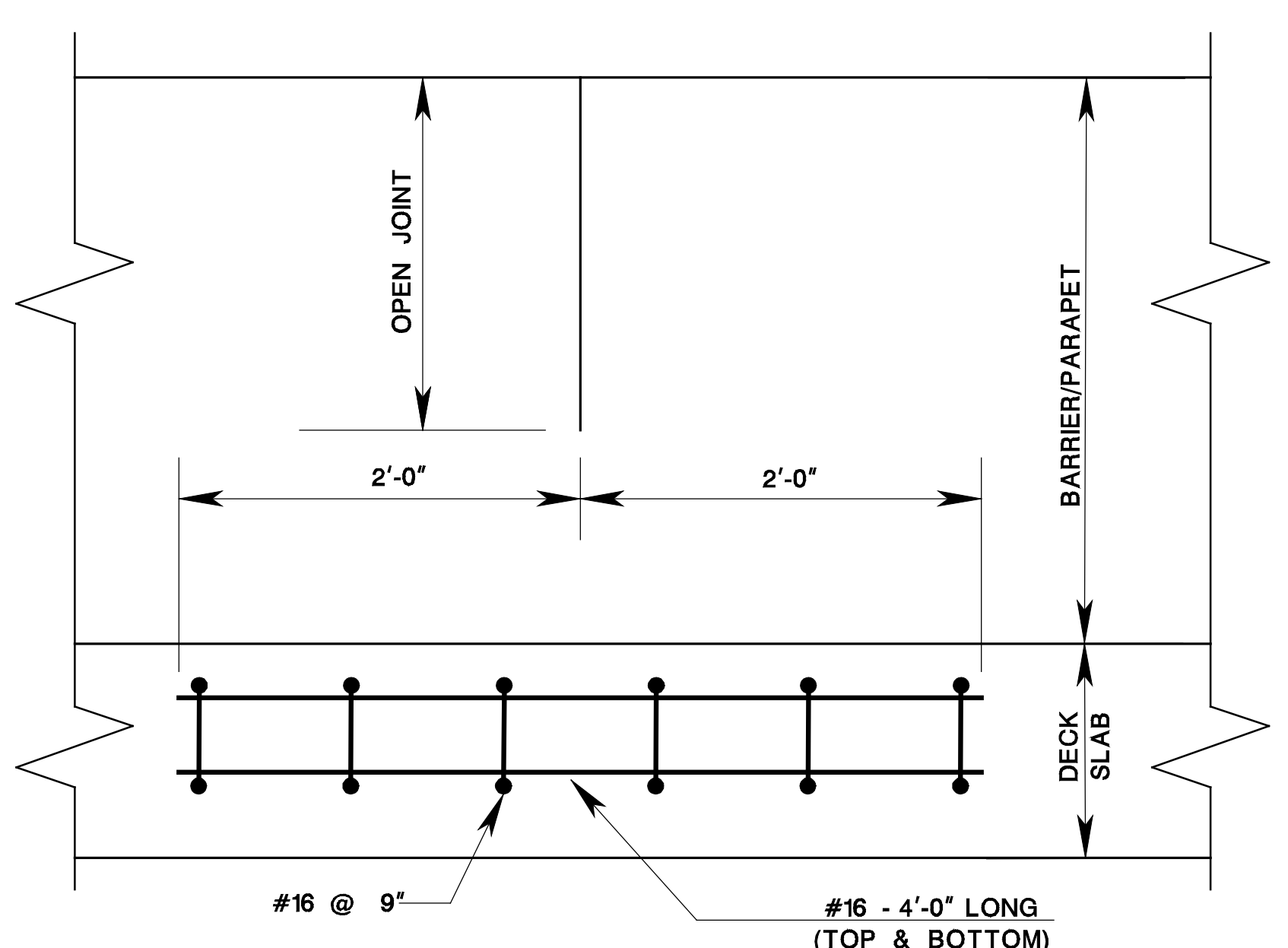


**ELEVATION**



**DETAIL 1**

**DECK REINFORCEMENT STEEL AT BARRIER/PARAPET JOINTS**



**SECTION A-A**

**2'-8", 2'-10" AND 6'-6" PARAPETS**  
N.T.S.

BCD-507-2

NEW JERSEY DEPARTMENT OF TRANSPORTATION  
BUREAU OF STRUCTURAL ENGINEERING

**BRIDGE CONSTRUCTION DETAILS**

BCD-507-2.5