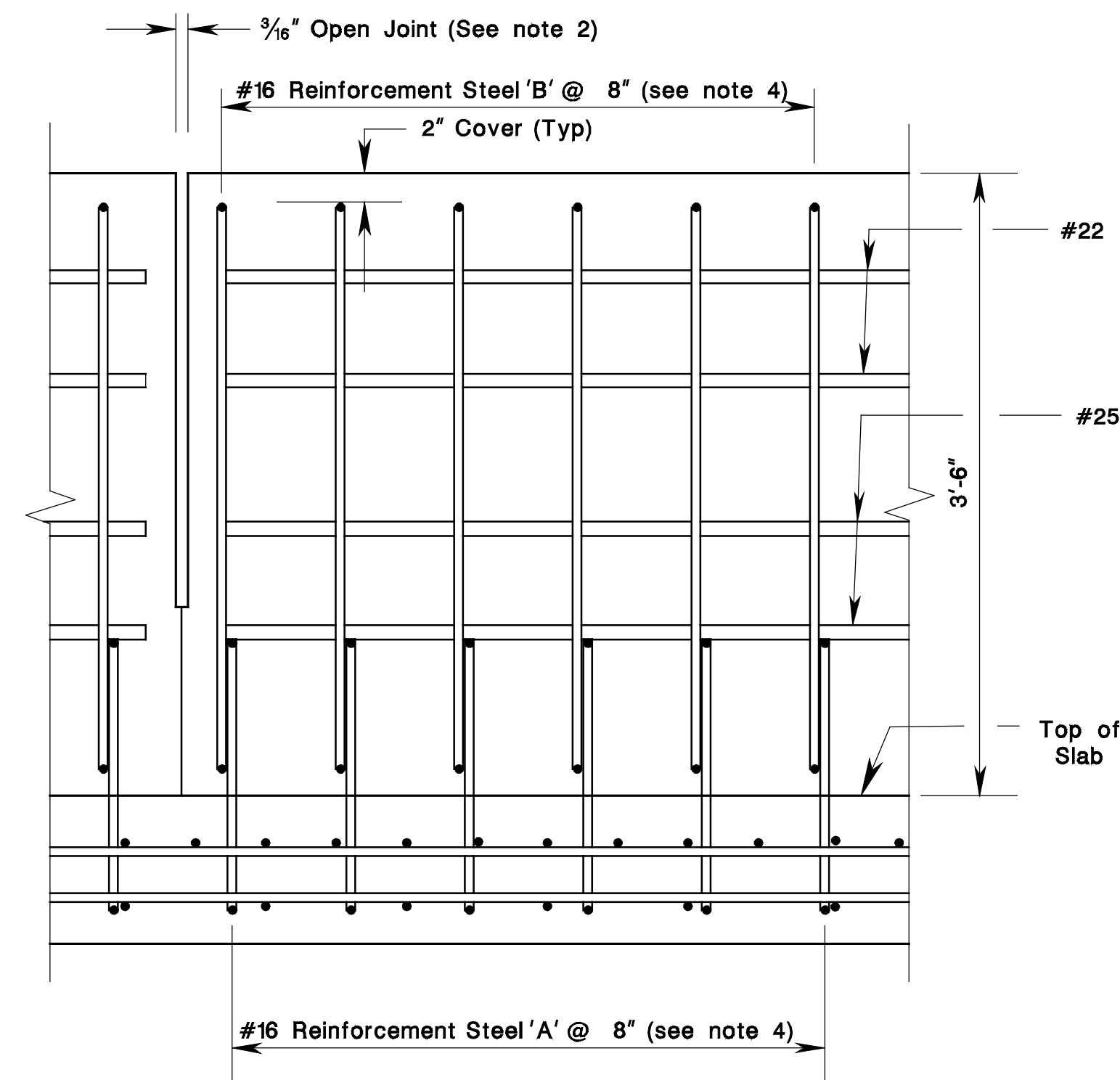
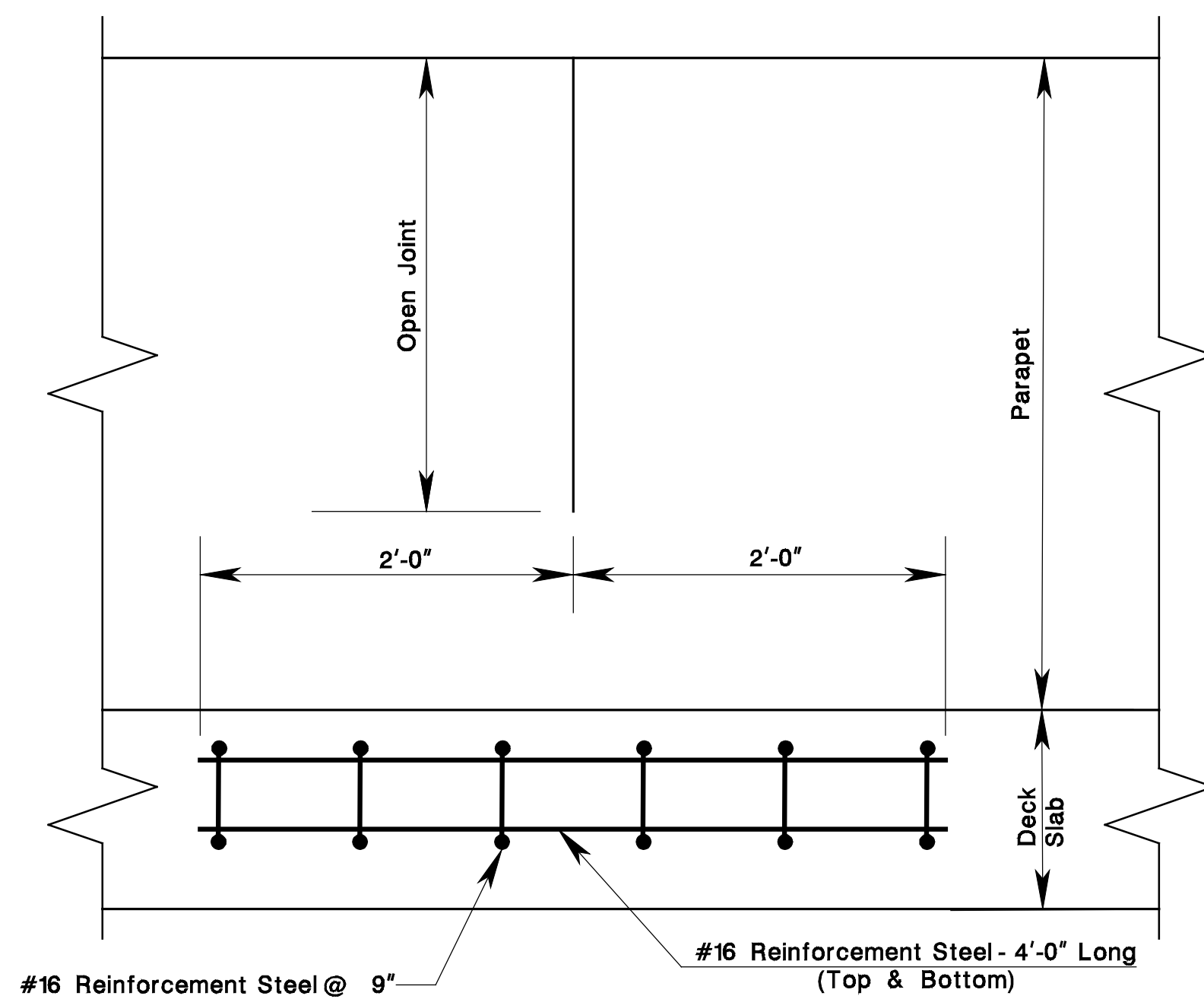


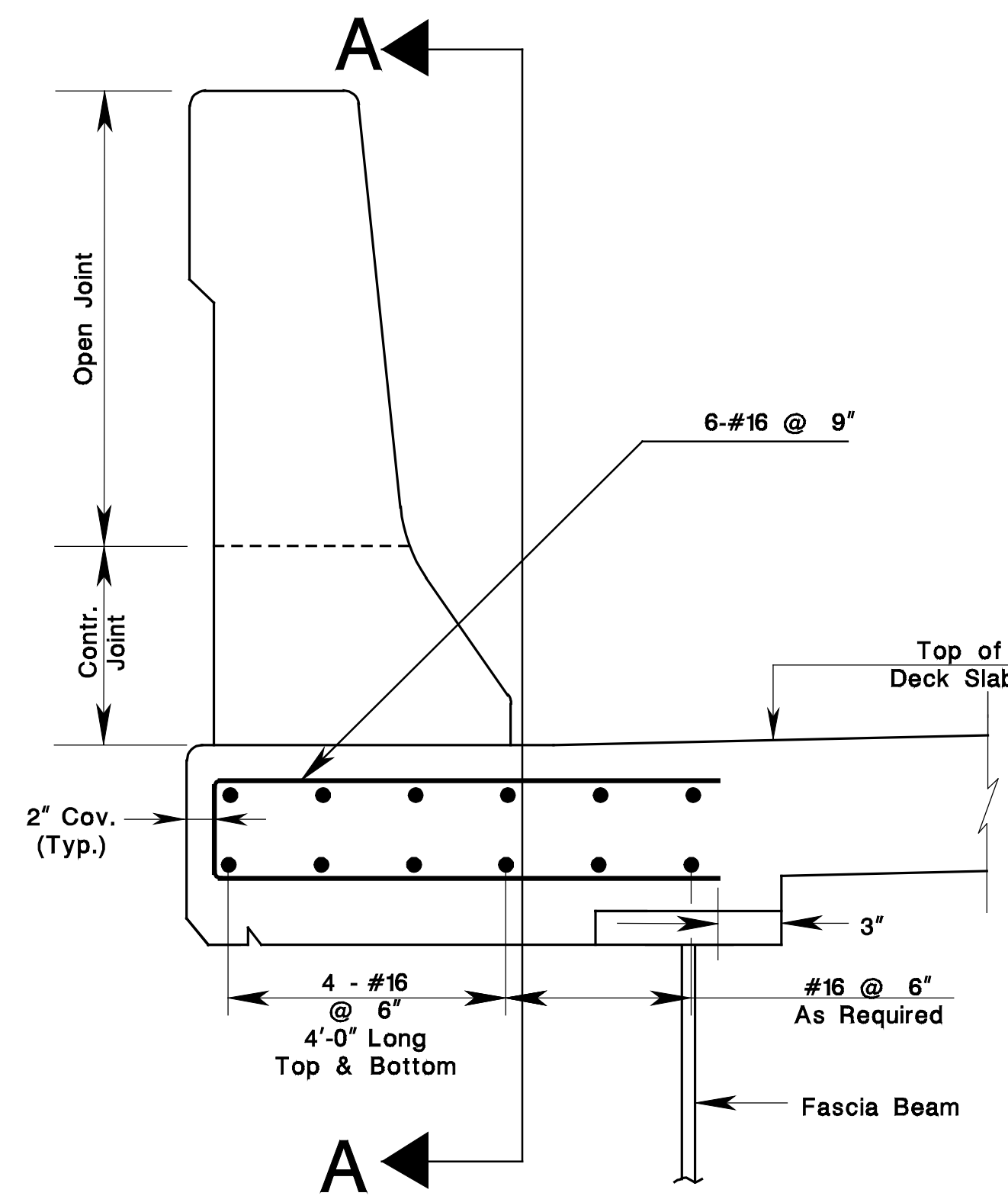
3'-6" HIGH F-SHAPE PARAPET



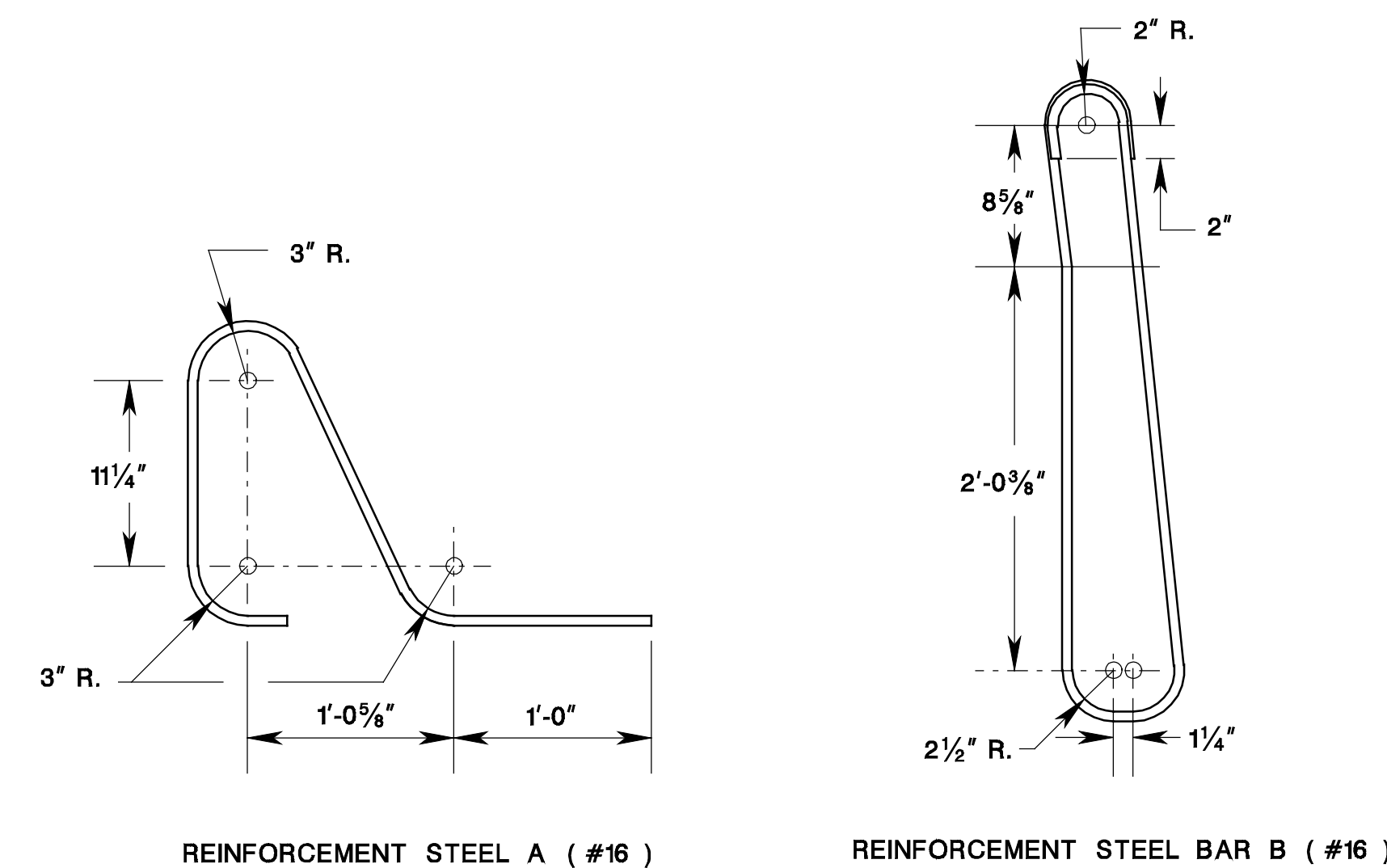
ELEVATION
(Showing Reinforcement steel)



SECTION A-A



DETAIL 1
DECK REINFORCEMENT STEEL AT PARAPET JOINTS



REINFORCEMENT STEEL BENDING DETAILS

3'-6" HIGH F-SHAPE PARAPET DETAILS
N.T.S.

GENERAL NOTES:

1. $\frac{3}{16}$ " open deflection joint shall be provided in parapets at intervals not exceeding 20'-0" and contraction joints shall be provided at the midpoint between the open joints.
2. The $\frac{3}{16}$ " open joint shall stop at the line indicated and a contraction joint shall be provided below that line.
3. Full depth joints shall be provided at location of transverse deck joints. The full depth joint opening width shall equal the transverse deck joint opening width.
4. All reinforcement steel in parapet shall be corrosion protected.
5. Permanent metal stay-in-place forms not permitted in the deck overhang area.
6. Fascia rustication and configuration as per Specifications.
7. For additional reinforcement steel that is required in the vicinity of parapet joints to prevent concrete cracking in the overhang portions of the deck slab see Detail 1.

BCD-507-8.1

NEW JERSEY DEPARTMENT OF TRANSPORTATION
BUREAU OF STRUCTURAL ENGINEERING

BRIDGE CONSTRUCTION DETAILS

BCD-507-8

pen table = Y:\NBDOT\Projects\NJDOT\Eng\TJ\A\TJ\A\Non-Roadway\bridge.tbl
scale = 0.0833331000000
date = 17-DEC-2007 10:00
ID = TPXBHAY
BCD07D-01-ORIGINAL SHEET
file =