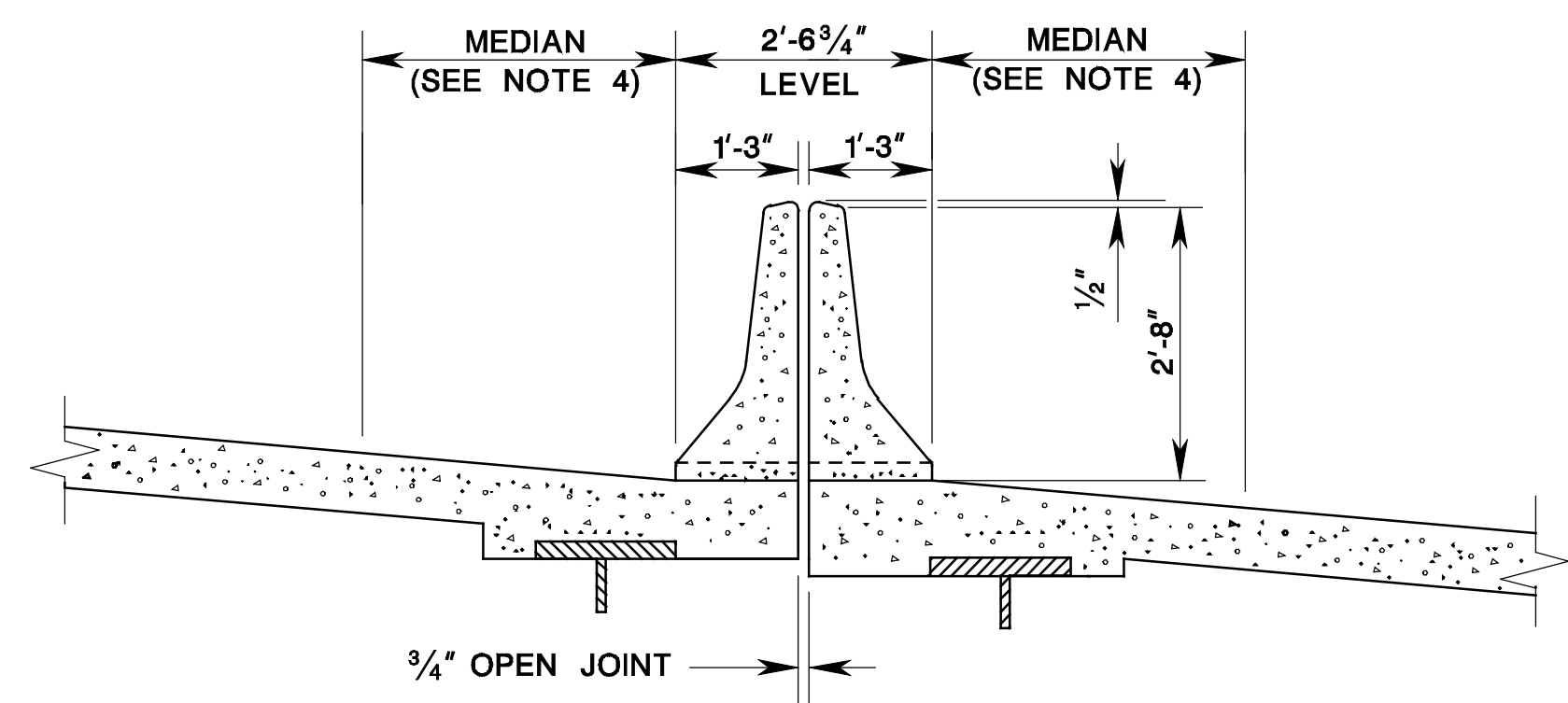
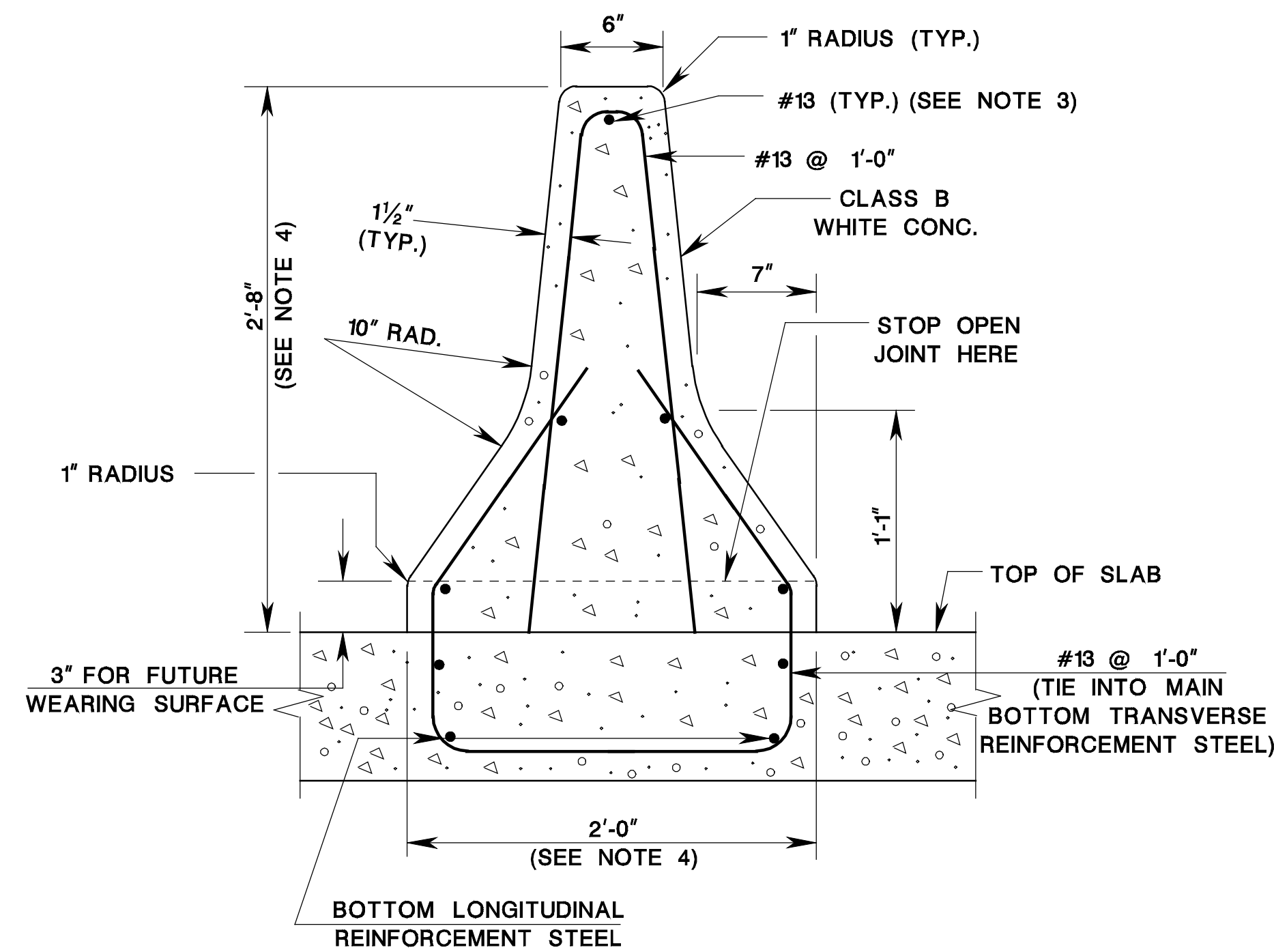


TYPICAL SECTION



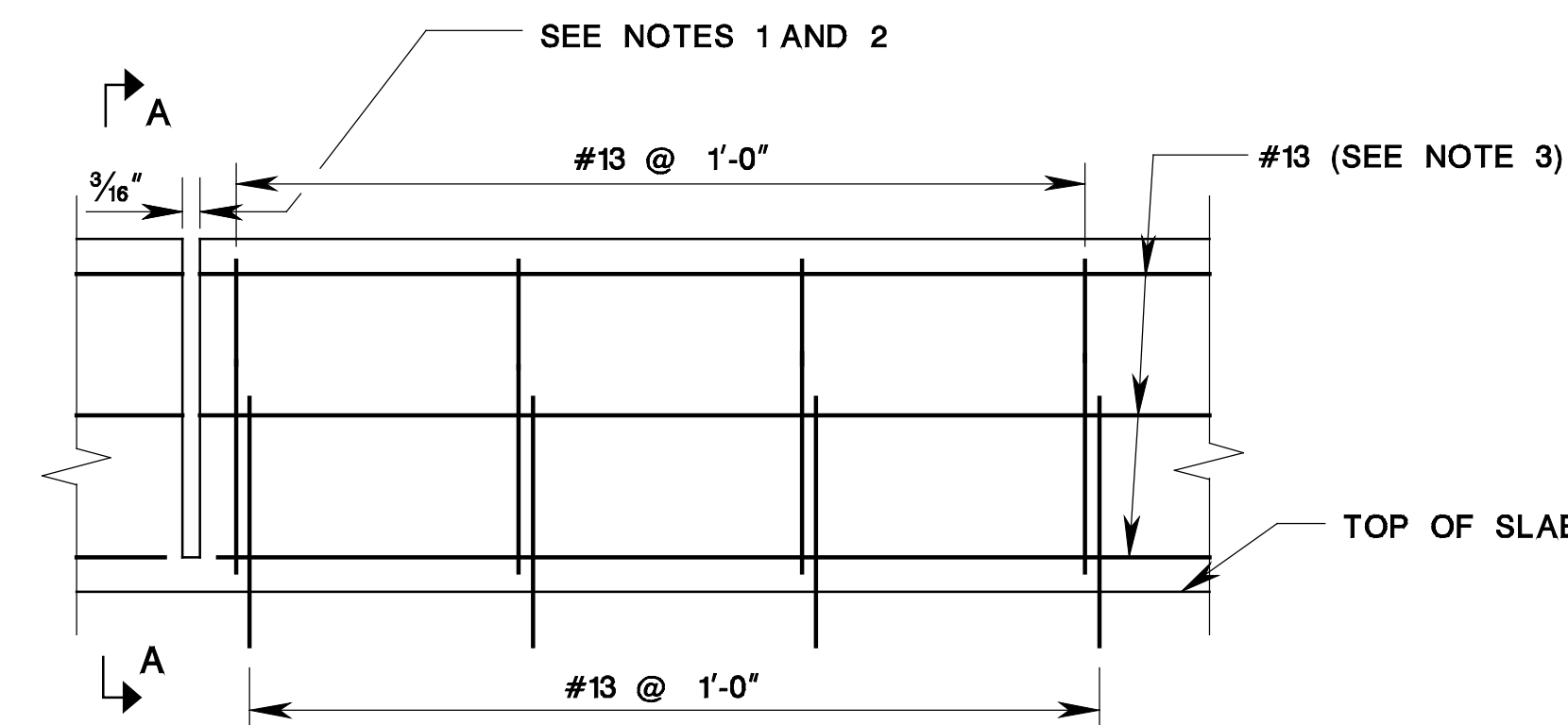
CROSS SECTION
2'-8" HIGH SPLIT MEDIAN BARRIER ON BRIDGE



SECTION A-A
2'-8" HIGH MEDIAN BARRIER ON BRIDGE

NOTES:

- 1 3/16" OPEN DEFLECTION JOINT SHALL BE PROVIDED AT INTERVALS NOT EXCEEDING 15'-0". THERE SHALL BE NO CONTRACTION JOINTS BETWEEN THE OPEN JOINTS AND NO CONTRACTION JOINTS LOCATED BELOW THE OPEN DEFLECTION JOINTS.
- 2 FULL DEPTH JOINTS SHALL BE PROVIDED AT LOCATION OF TRANSVERSE DECK JOINTS. THE FULL DEPTH JOINT OPENING WIDTH SHALL EQUAL THE TRANSVERSE DECK JOINT OPENING WIDTH.
- 3 ALL REINFORCEMENT STEEL IN MEDIAN BARRIER IS DESIGNATED IN METRIC UNITS AND SHALL BE CORROSION PROTECTED.
- 4 WIDTH AND HEIGHT TO BE DETERMINED BY ROADWAY APPROACH BARRIER. REINFORCEMENT STEEL MUST BE ADJUSTED ACCORDINGLY.
- 5 IF CONDUITS ARE USED WITHIN THE MEDIAN BARRIER, PROVIDE A SLEEVE OF SUFFICIENT LENGTH TO ACCOMMODATE MAXIMUM EXPANSION OF THE EXPANSION JOINT. (REFER TO STANDARD ELECTRICAL DETAILS FOR CONDUIT EXPANSION FITTINGS.)



ELEVATION

BRIDGE MEDIAN BARRIER
N.T.S.

NEW JERSEY DEPARTMENT OF TRANSPORTATION
BUREAU OF STRUCTURAL ENGINEERING

BRIDGE CONSTRUCTION DETAILS