

1/2" Sq. Rails (Top & Brace)

2" SQ. POSTS

AT POST

NOTE: ALL POSTS SHALL BE SET PLUMB.

3/8" DIA. CARRIAGE BOLTS, HEX. NUTS AND 1/2" I.D. WASHERS FOR ALL RAIL AND POST CASTINGS. ALL NUTS SHALL BE ON EXTERIOR FACE OF CASTINGS. AFTER NUTS ARE TIGHTENED, THE BOLTS SHALL NOT PROJECT MORE THAN 1/4" THRU THE NUT. (TYP.)

INSERT SHIM MATERIAL BETWEEN SLEEVE & POST (IF REQUIRED BY ENGINEER) & SEAL WITH AN APPROVED CAULKING COMPOUND

STAKE EACH ANCHOR BOLT.

AFTER NUTS ARE TIGHTENED THE BOLTS SHALL NOT PROJECT MORE THAN 3/8" ABOVE THE NUT.

4'-0" RAD.

60°

30°

2" SQ. POST

ALUM. CLF FABRIC (7'-0" LONG)

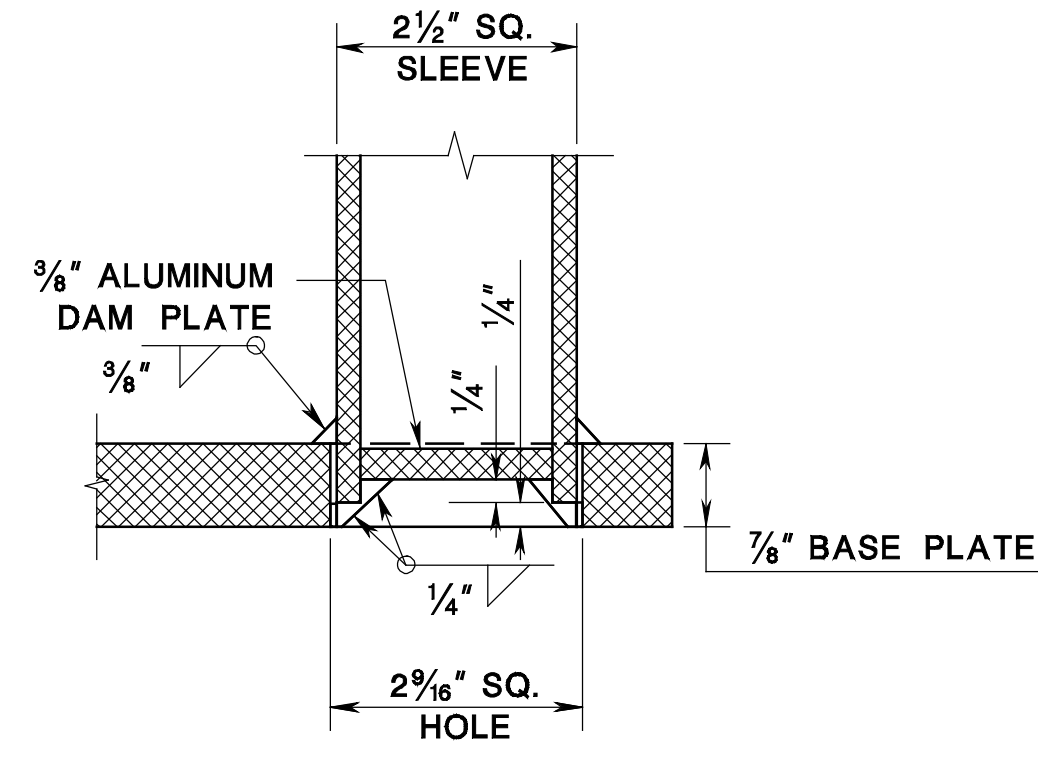
2 1/2" SQ. SLEEVE (6" LONG)

TOP OF PARAPET

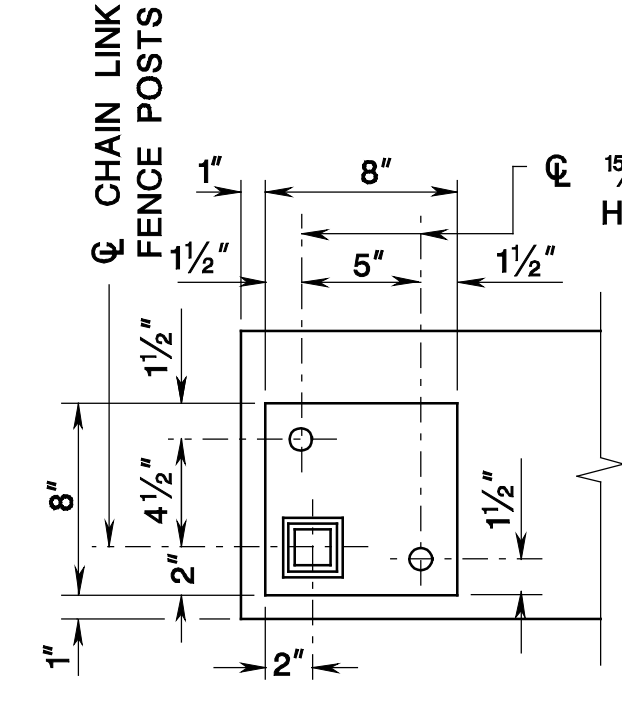
3/4" DIA. CORROSION RESISTING STEEL BOLT, HEX. NUT & 10 GAGE WASHER, 15/16" I.D. X 1 3/4" O.D. ASTM B209 ALCLAD 2024-T4.

INTERIOR FACE OF PARAPET

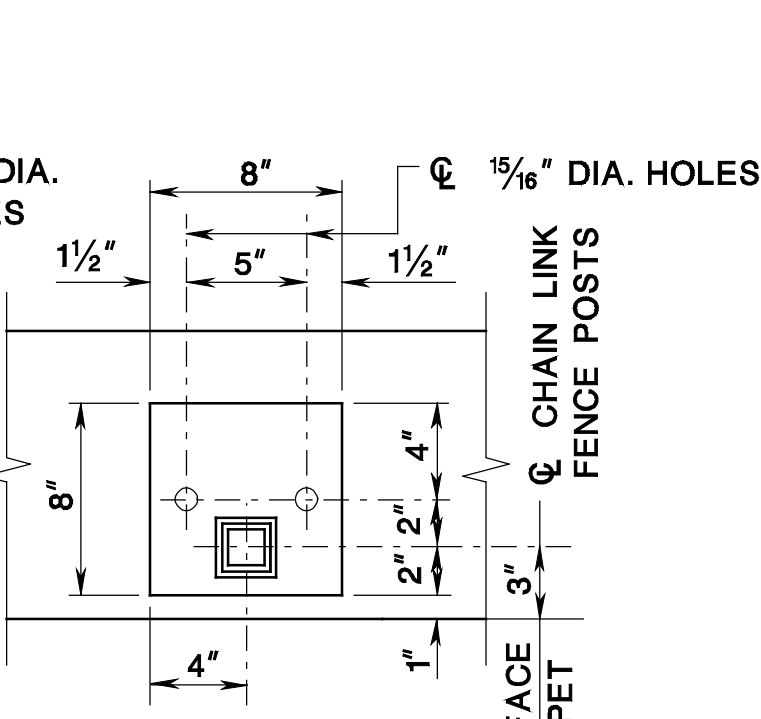
TYPICAL SECTION



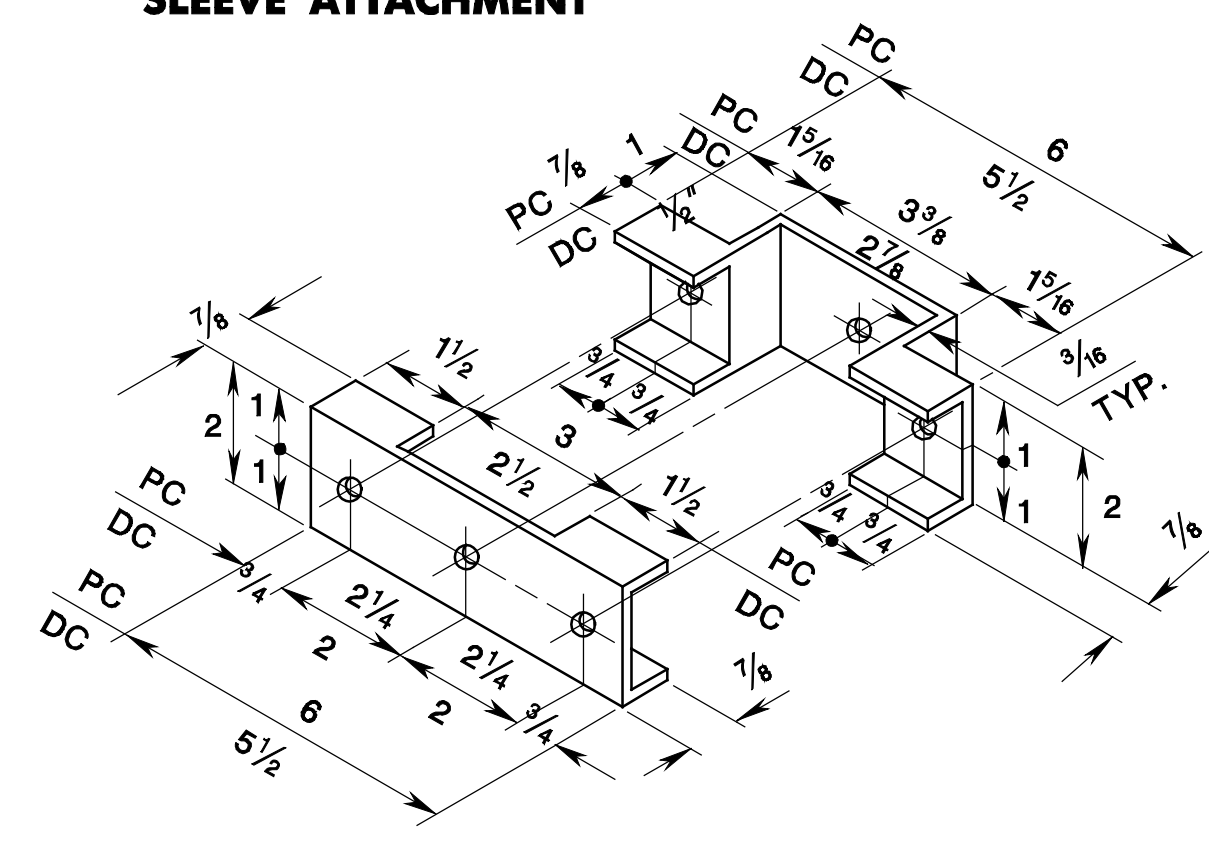
DETAIL OF SLEEVE ATTACHMENT



END POST BASE PLATE

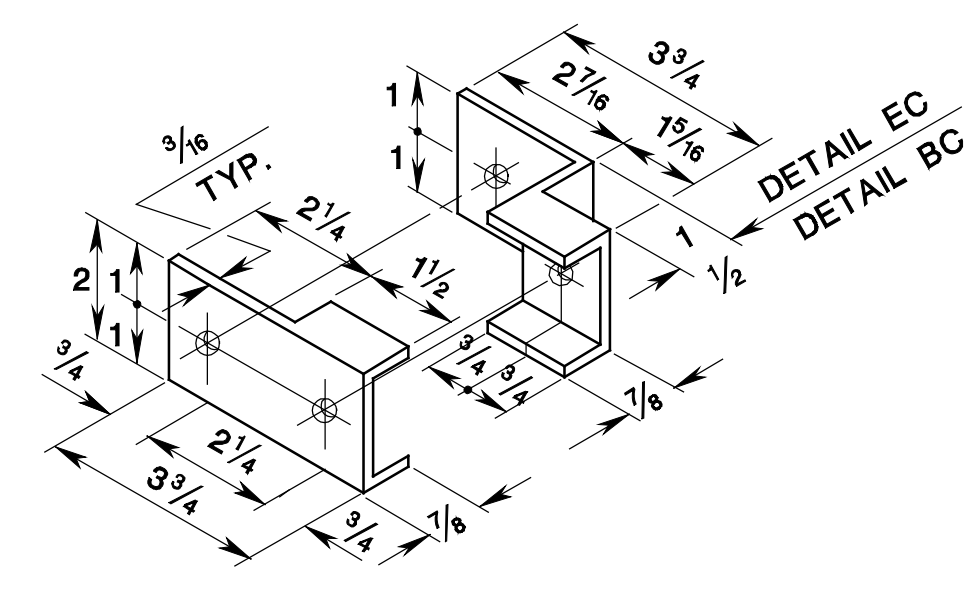


INTERMEDIATE POST BASE PLATE



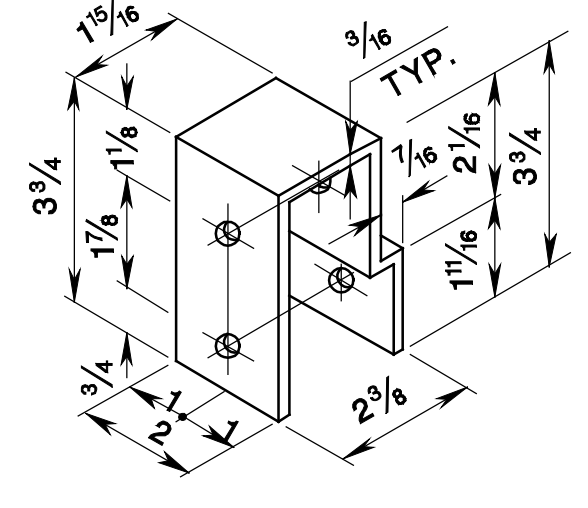
ALL DIMENSIONS ARE IN INCHES

DETAIL PC & DETAIL DC



ALL DIMENSIONS ARE IN INCHES

DETAIL EC & DETAIL BC



ALL DIMENSIONS ARE IN INCHES

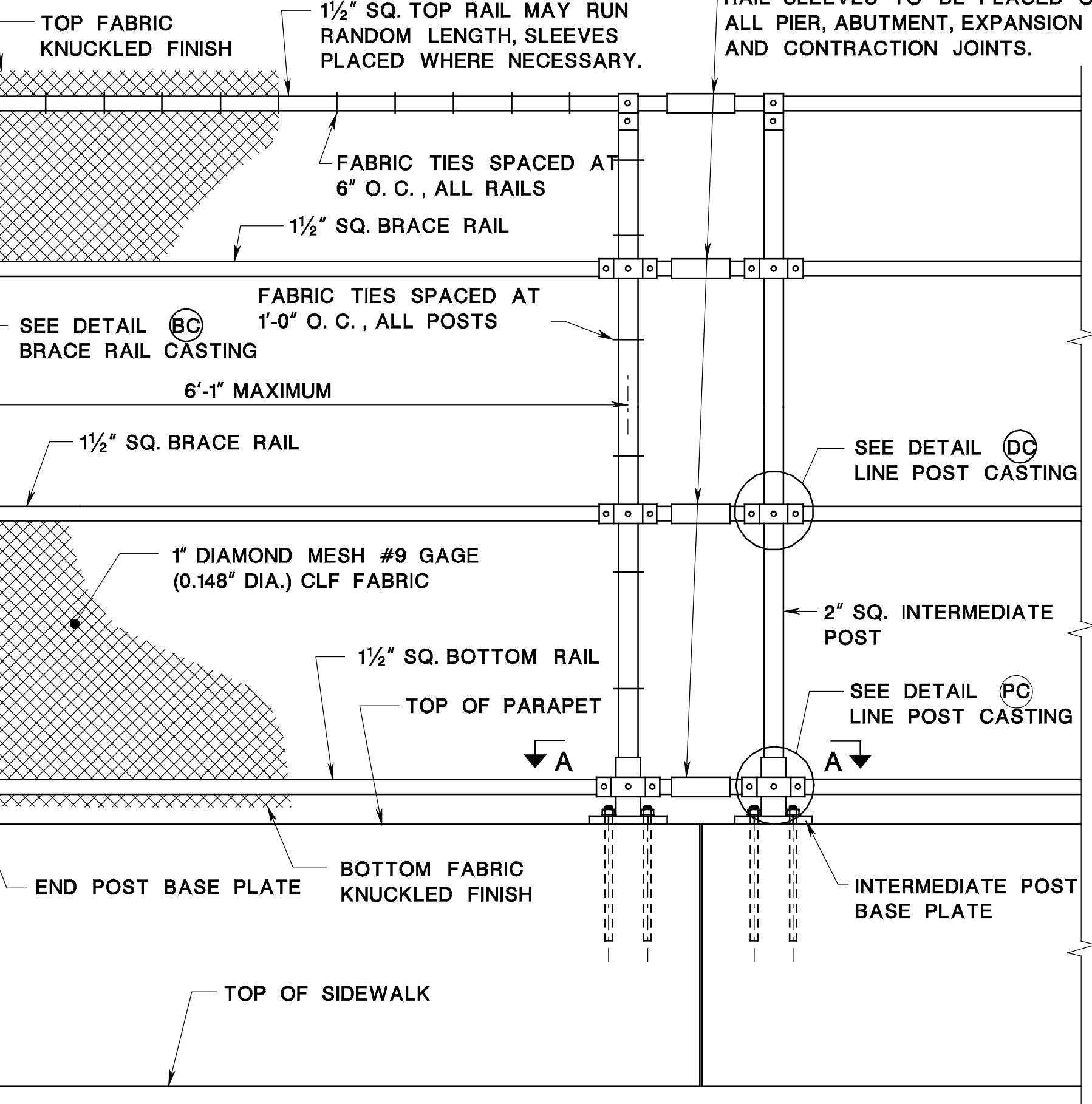
DETAIL TC

SEE DETAIL (TC) POST TOP CASTING

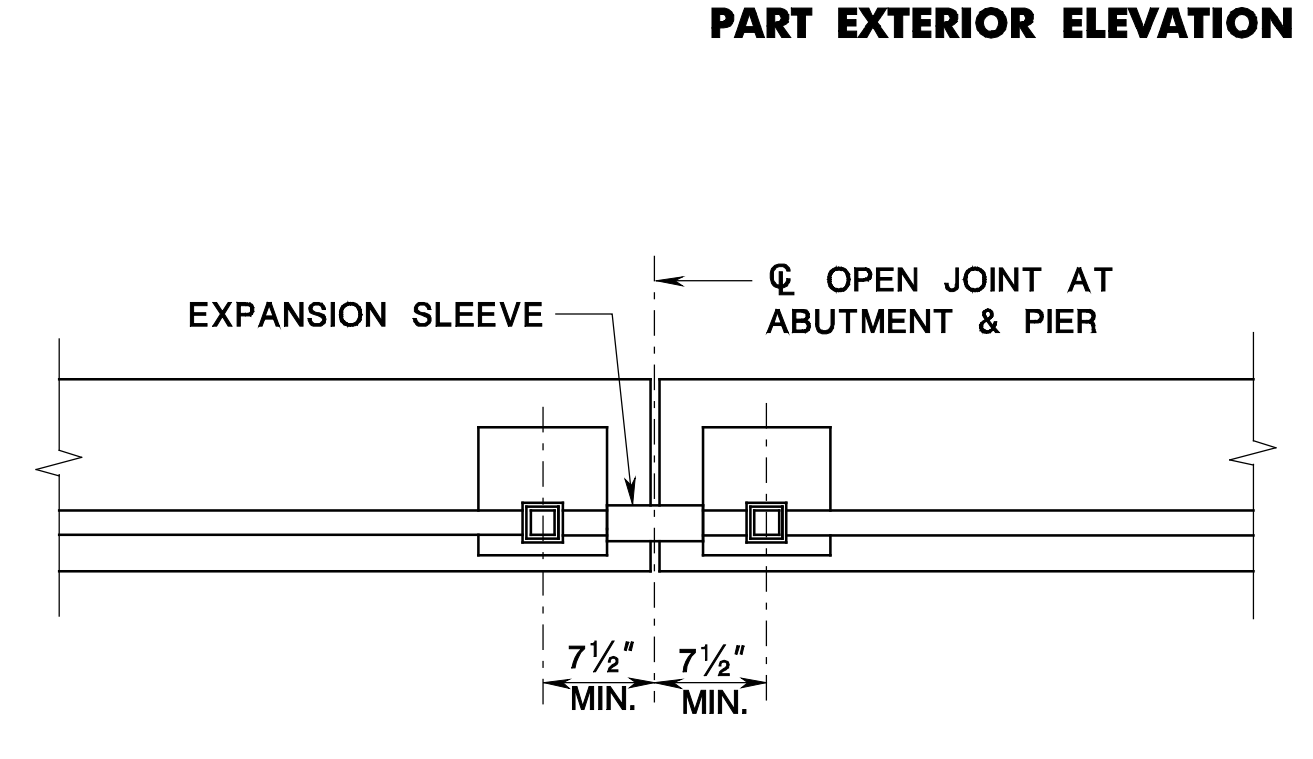
STRETCHER BAR BAND 1/8" BY 1" @ 1'-0" O.C. WITH 3/16" DIA. CARRIAGE BOLT

1/4" BY 3/8" STRETCHER BAR

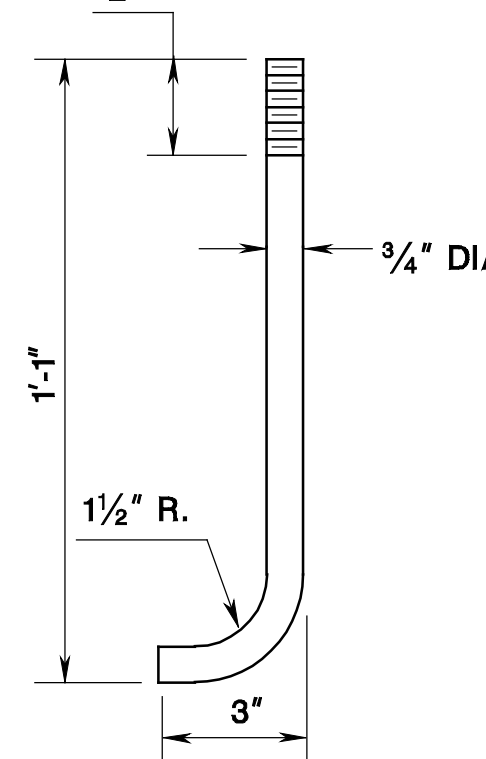
SEE DETAIL (EC) END POST CASTING



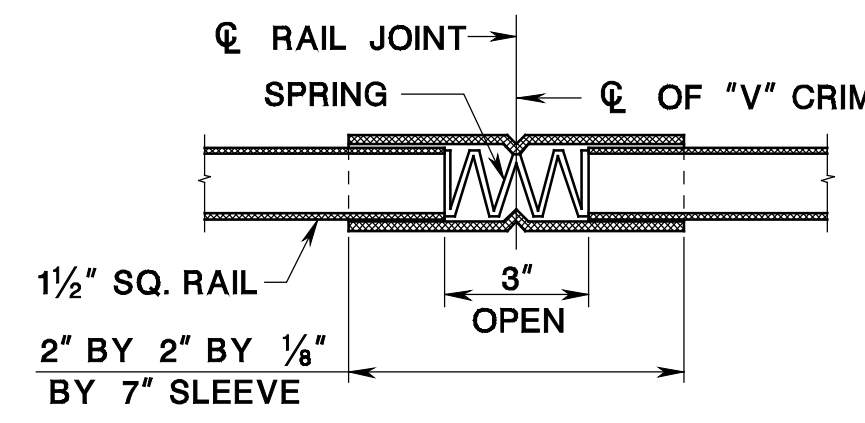
PART EXTERIOR ELEVATION



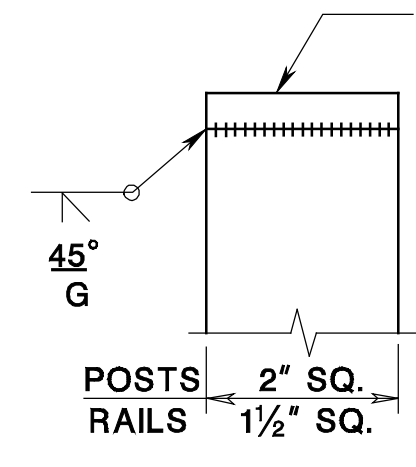
SECTION A-A



ANCHOR BOLT



RAIL SLEEVE



DAM PLATE

GENERAL NOTES:

- DESIGN CRITERIA: AASHTO STANDARD SPECIFICATIONS FOR STRUCTURAL SUPPORTS FOR HIGHWAY SIGNS, LUMINAIRES AND TRAFFIC SIGNALS.
- MAXIMUM DESIGN WIND VELOCITY: 80 MPH.
- FENCING FABRIC SHALL CONFORM TO AASHTO M181, TYPE 3.
- WIND PRESSURE DRAG COEFFICIENT FOR MESH FROM FIG. 1-13, "WIND LOAD ON SCREENS", NAVDOCKS DM-2; DESIGN MANUAL, STRUCTURAL ENGINEERING.
- THE COMPONENT PARTS OF THE CHAIN LINK FENCING SHALL CONFORM TO THE MATERIAL REQUIREMENTS OF THE SPECIFICATIONS.
- ANCHOR BOLTS SHALL BE ASTM A 276, TYPE 302. ANCHOR BOLTS SHALL BE SET BY THE CONTRACTOR WITH 2" OF CLEAR CONTACT, SET CLEAN. ALUMINUM SURFACES PLACED IN CONTACT WITH CONCRETE SHALL BE GIVEN A HEAVY COAT OF NON ALUMINUM EPOXY MASTIC PRIMER.
- BASE PLATES FOR ALL CLF SHALL BE AS SHOWN, 7/8" THICK. (ALUMINUM ALLOY 6061-T6)
- FILLET WELD MATERIAL SHALL BE FILLER ALLOY ER 5356 OR ER 5556.
- POST SLEEVES SHALL BE 2 1/2" SQ., 7/32" WALL THICKNESS, ASTM B 221, AND SHALL BE WELDED TO BASE PLATE. (ALUMINUM ALLOY 6061-T6)
- POSTS SHALL BE 2" SQ., 1/4" WALL THICKNESS, ASTM B 221, TO BE SET PLUMB AND SPACED AS SHOWN ON PLANS FOR EACH STRUCTURE. (ALUMINUM ALLOY 6061-T6)
- SHIM MATERIAL SHALL BE USED WHERE NECESSARY FOR POST ALIGNMENT, ASTM B 209. (ALUMINUM ALLOY 1100-0)
- ALL HORIZONTAL RAILS (TOP, BOTTOM, BRACE) SHALL BE 1/2" SQ., 1/8" WALL THICKNESS. (ALUMINUM ALLOY 6061-T6)
- DAM PLATES, 3/8" THICK, WELDED TO CLOSE ALL EXPOSED ENDS OF RAIL TUBES AND TOP OF CHAIN LINK FENCE POSTS. (ALUMINUM ALLOY 6061-T6)
- BRACE RAILS SHALL BE INSTALLED AT END UNITS WHERE CLF FABRIC IS TENSIONED.
- RAILING EXPANSION SLEEVES SHALL BE 2" SQ. X 7" LONG, WITH HOT-DIP GALVANIZED SPRING IN SLEEVE, SPRING NOT TO EXCEED 1/2" FULLY COMPRESSED. RAIL ENDS TO BE 3" APART IN SLEEVE AT "V" CRIMP, (ALUMINUM ALLOY 6061-T6) ASTM B 221.
- STRETCHER BARS TO BE 1/4" BY 3/8". (ALUMINUM ALLOY 6061-T6)
- STRETCHER BAR BANDS TO BE 1/8" X 1" BEVELLED EDGES. (ALUMINUM ALLOY 6063-T6)
- FABRIC TIES SHALL BE #9 GAGE (0.148" DIA.). A MINIMUM OF ONE (1) COMPLETE TURN IS REQUIRED AT ENDS OF ALL TIES. (ALUMINUM ALLOY 6061-T6)
- CLF FABRIC SHALL BE #9 GAGE (0.148" DIA.) HAVING A 1" DIAMOND MESH, TOP AND BOTTOM SELVAGE TO BE KNUCKLED. FABRIC SHALL BE CONTINUOUS ACROSS ALL JOINTS.
- STRETCHER BAR BAND FASTENERS TO BE 5/16" DIA. BY 1/4" CARRIAGE BOLTS. (ALUMINUM ALLOY 2024-T4)
- STAKE EACH ANCHOR BOLT AT ONE (1) POINT ONLY.
- AFTER ERECTION, ALL ANCHOR BOLT HOLES & SPACES BETWEEN BASE PLATES & CONCRETE SHALL BE THOROUGHLY CAULKED WITH AN ALUMINUM IMPREGNATED CAULKING COMPOUND CONFORMING TO FEDERAL SPECIFICATIONS TT-C-598B(2).
- AFTER ERECTION OF POSTS, DRILL 3/8" DIA. HOLE THROUGH POST SLEEVE AND POST, 1/2" ABOVE BASE PLATE FOR DRAINAGE. LOCATE HOLE PARALLEL TO FENCING.
- THE CONTRACTOR SHALL VERIFY ALL DIMENSIONS & CONDITIONS IN THE FIELD.
- WORKING DRAWINGS SHALL BE SUBMITTED ACCORDING TO THE NJDOT STANDARD SPECIFICATIONS.

BRIDGE CHAIN LINK FENCE (CURVED TOP)

N.T.S.

NEW JERSEY DEPARTMENT OF TRANSPORTATION BUREAU OF STRUCTURAL ENGINEERING

BRIDGE CONSTRUCTION DETAILS

BCD-509-1.1

139 146

per table = Y:\PROJECTS\Projects\NJDOT\Tag\pict\Title\Non-Roadway\bridge.tbl

scale = 0.09333333:0.000000

date = 17-DEC-2007 10:01

ID = TPXBH1AV

BCD509-01-ORIGINAL SHEET

file =