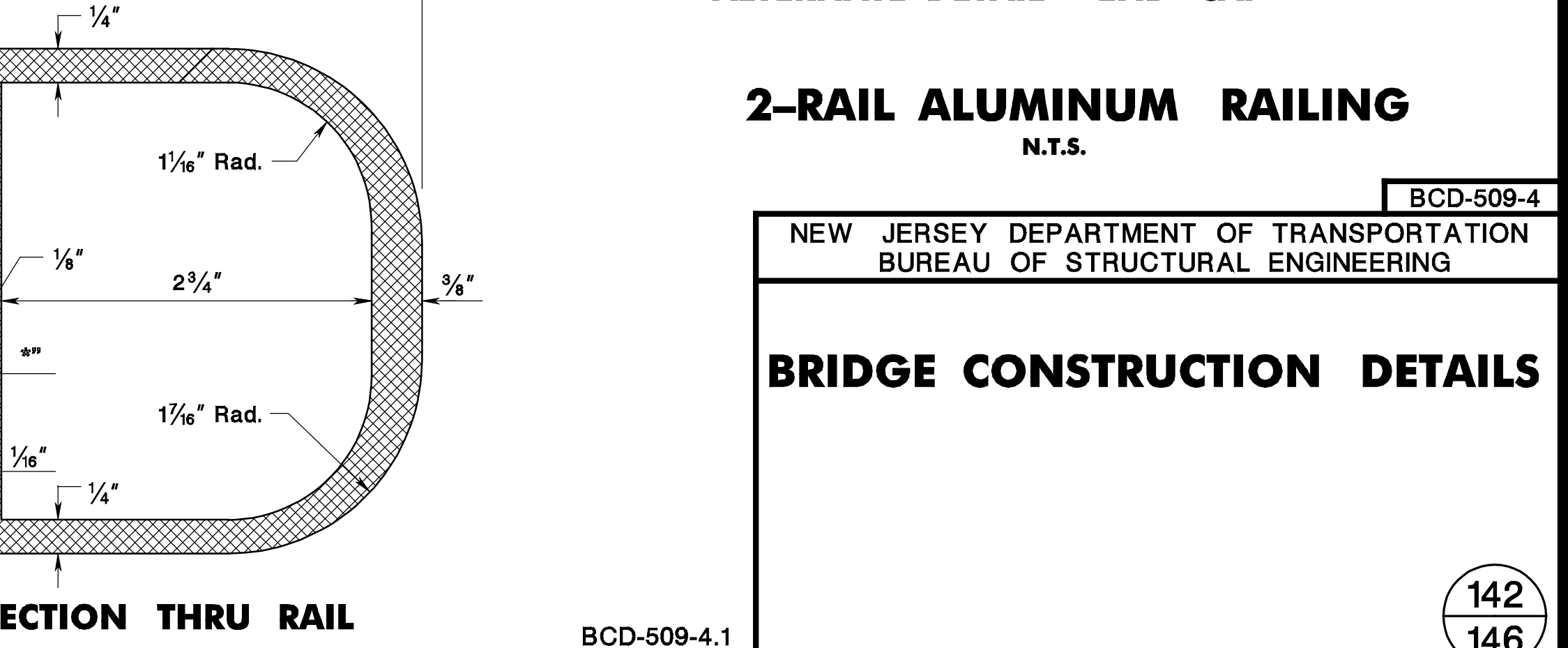
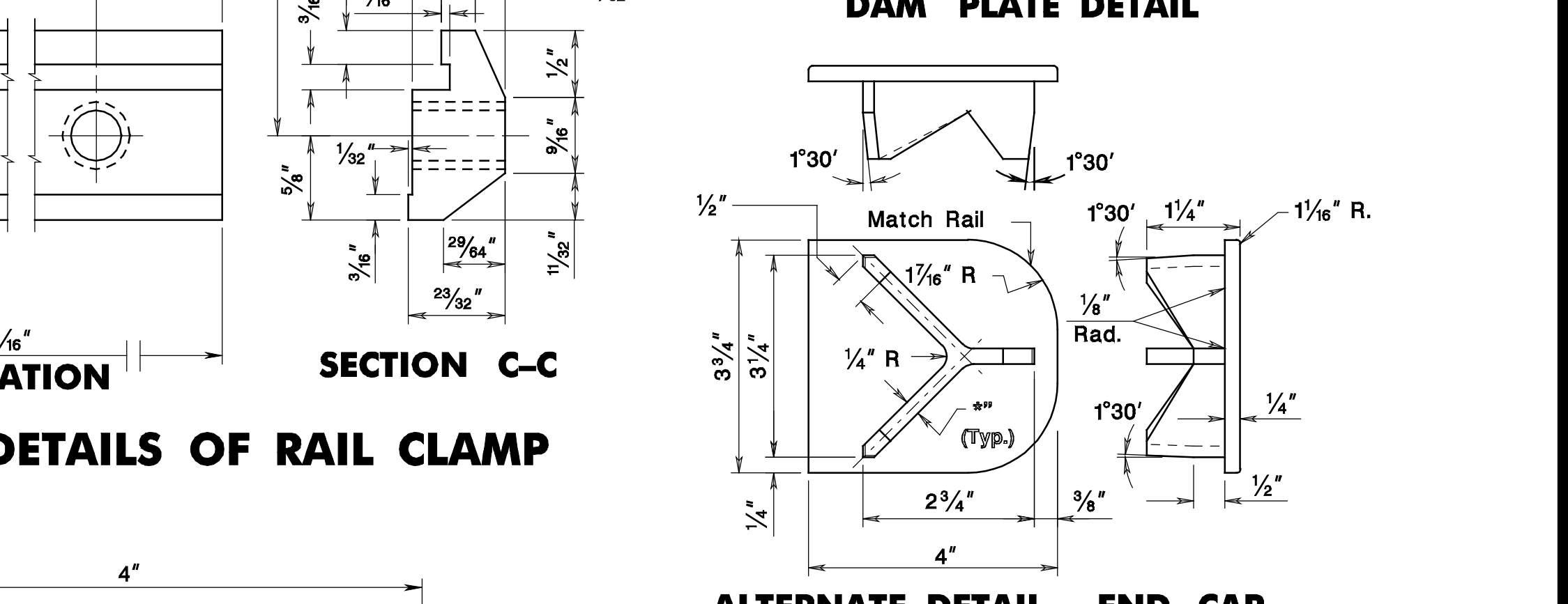
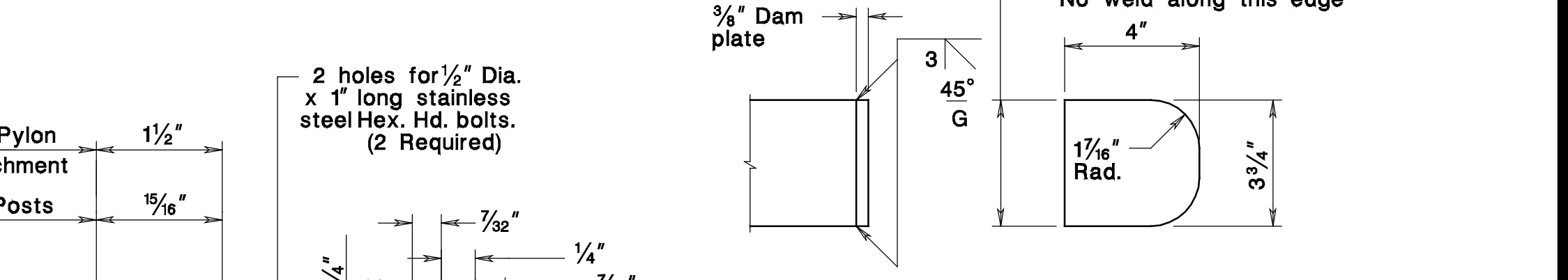
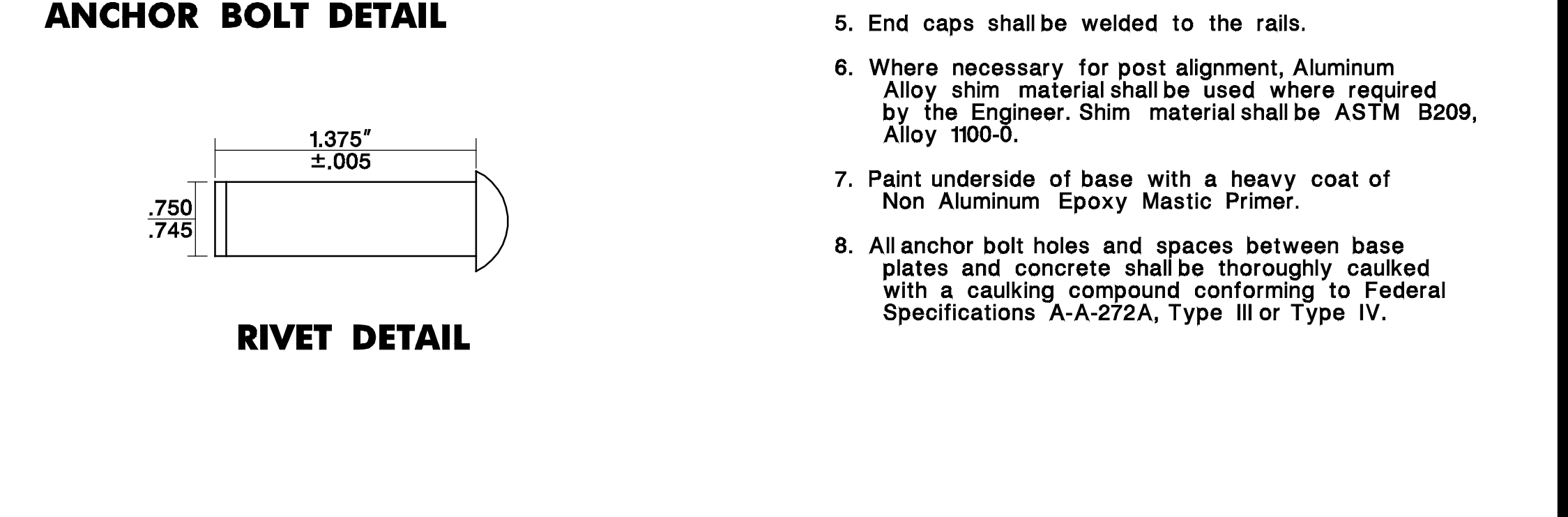
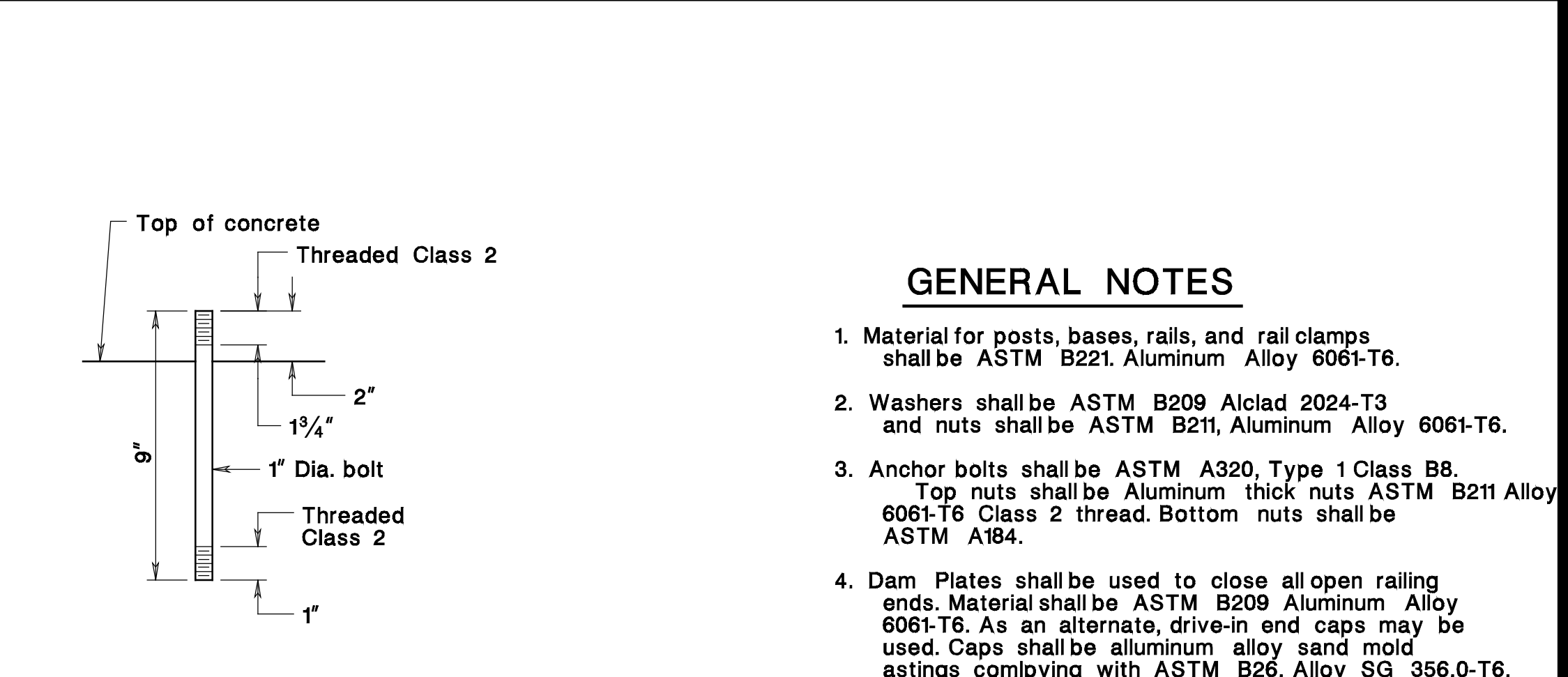
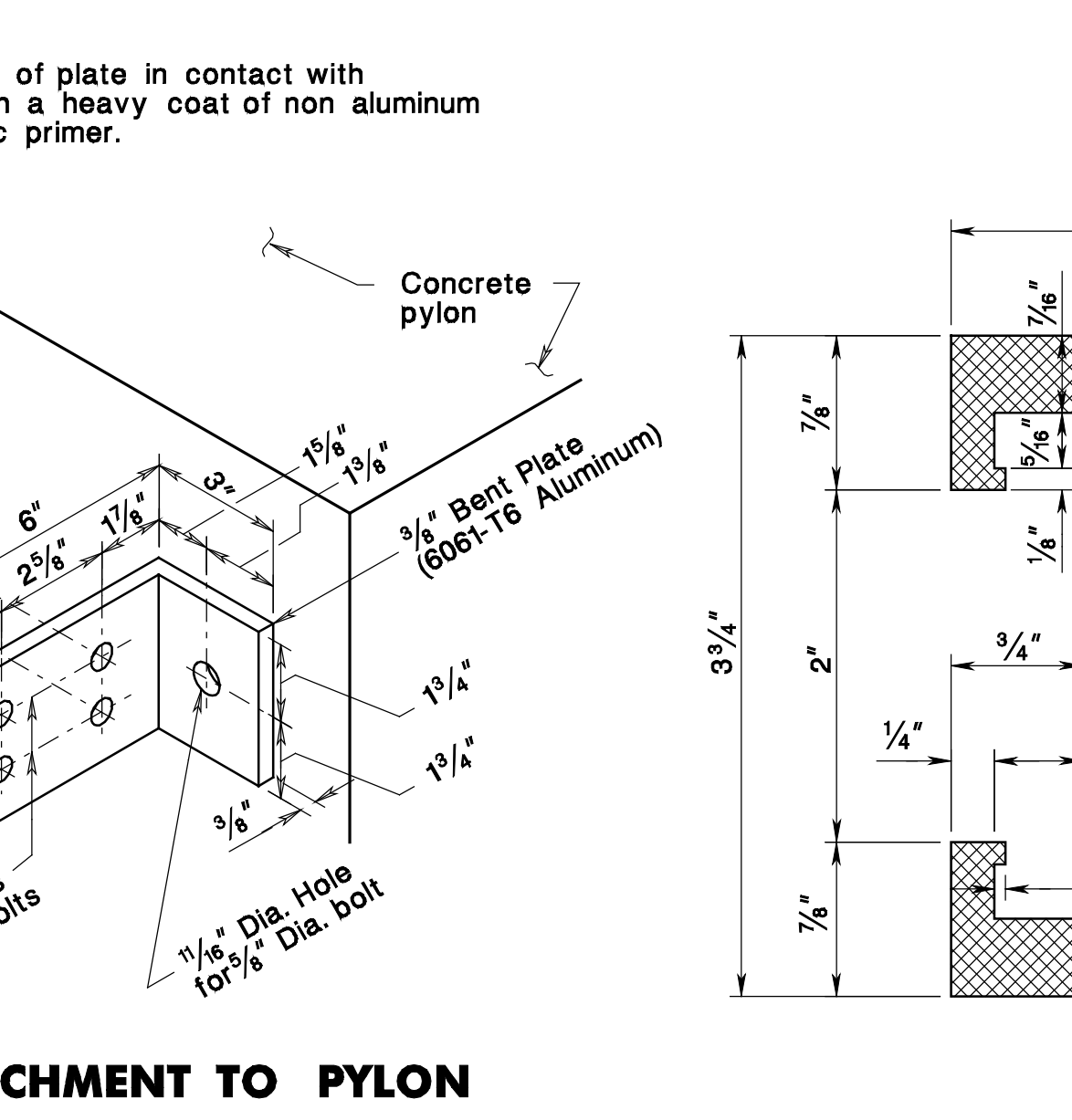
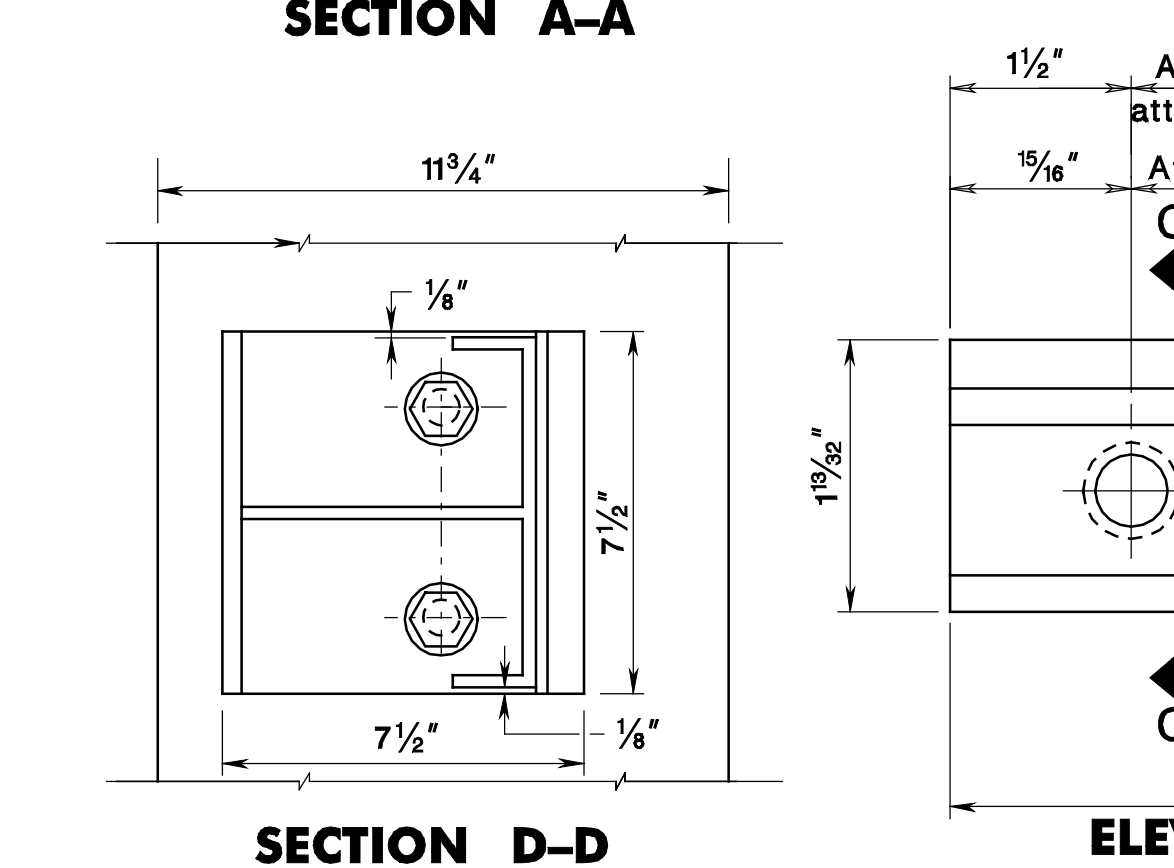
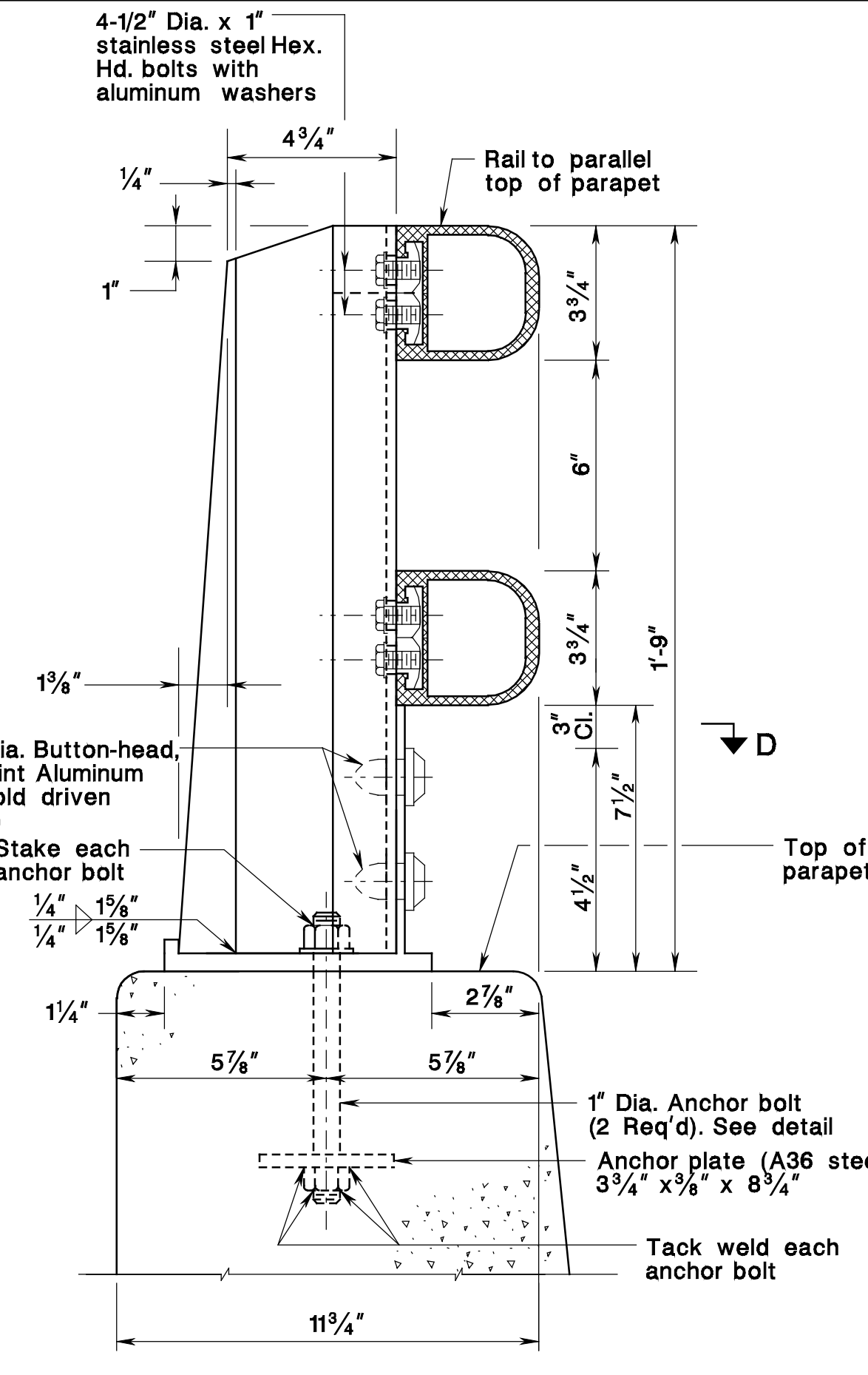
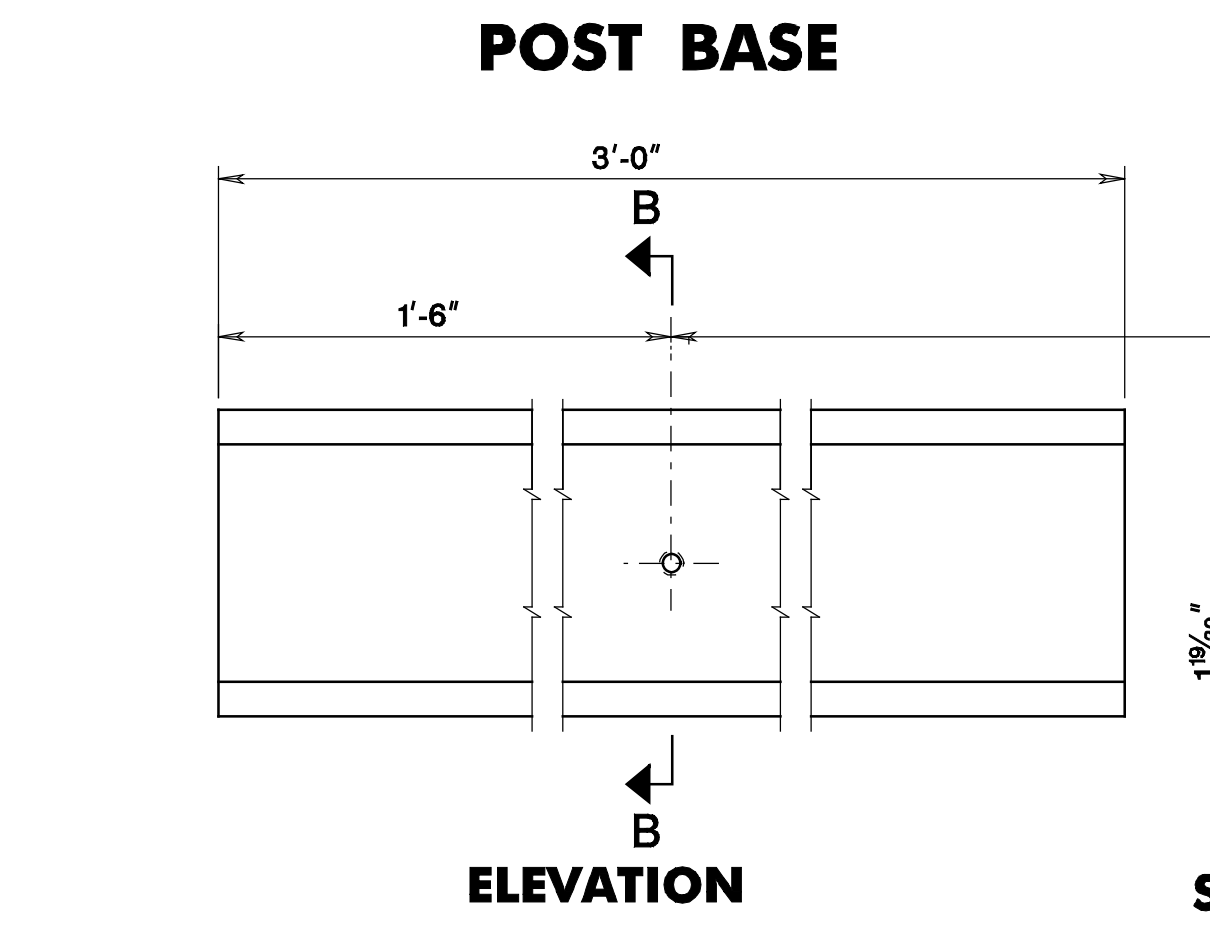
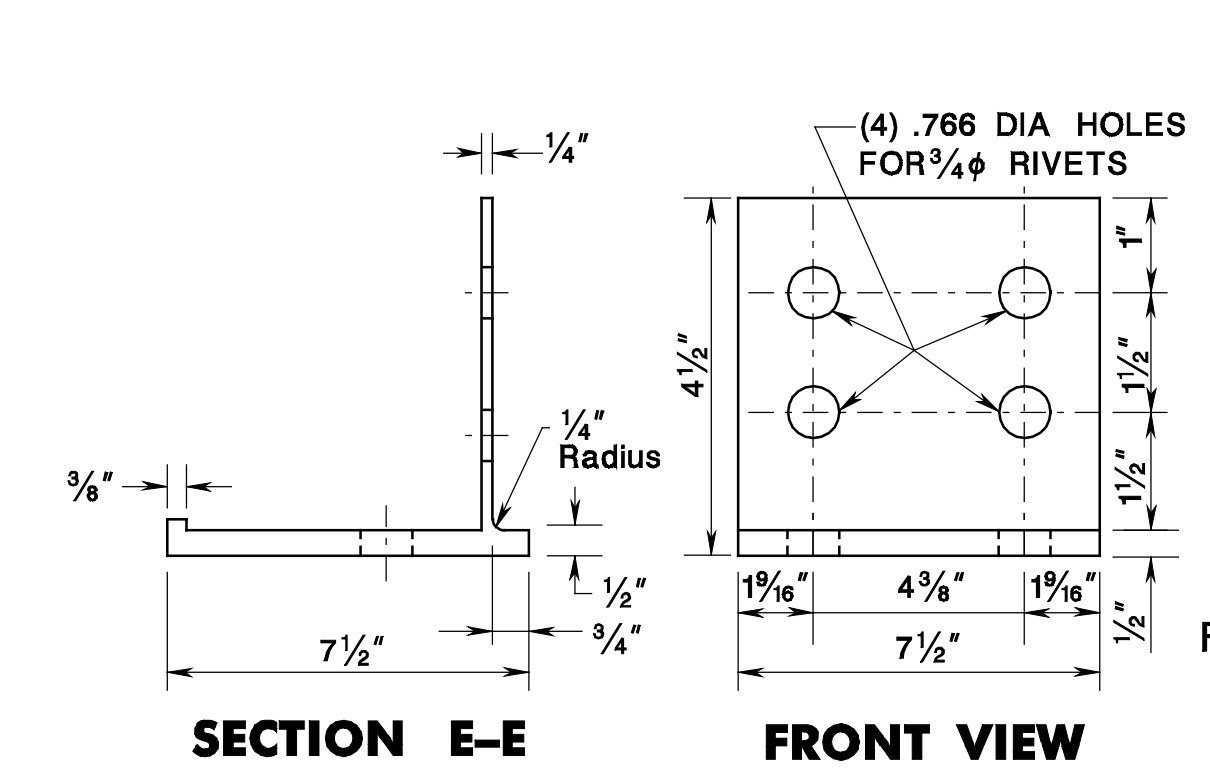
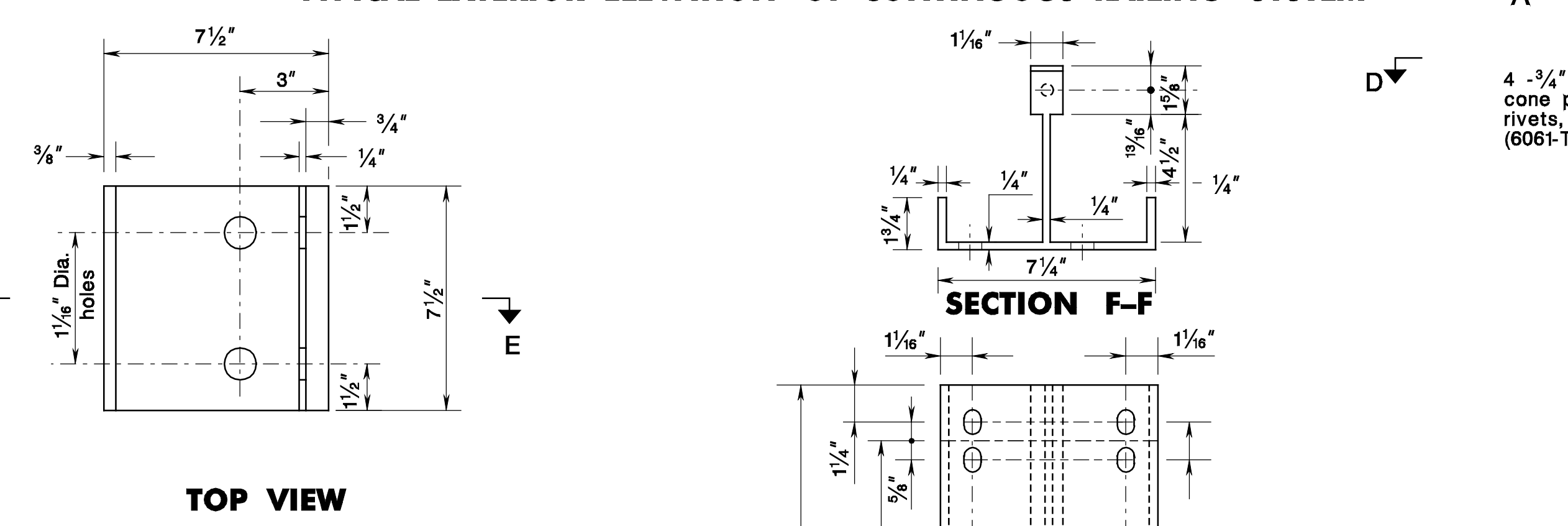
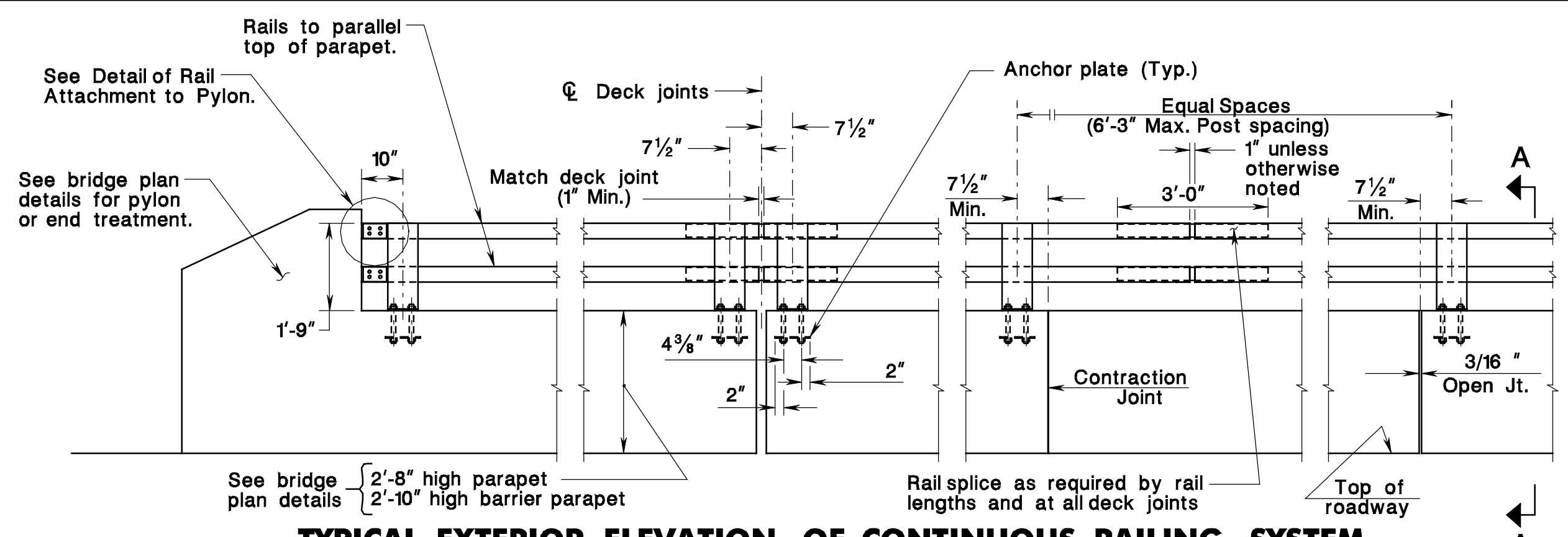


pen table = Y:\NJDOT\TWS\Projects\NJDOTEng\T\104\TB\A\Non-Roadway\bridges\bbi

scale = 0.0833331:000000

date = 17\_DEC-2007 10:02

ID = TPXBHAV



- GENERAL NOTES**
- Material for posts, bases, rails, and rail clamps shall be ASTM B21, Aluminum Alloy 6061-T6.
  - Washers shall be ASTM B209 Alclad 2024-T3 and nuts shall be ASTM B21, Aluminum Alloy 6061-T6.
  - Anchor bolts shall be ASTM A320, Type 1 Class B8. Top nuts shall be Aluminum thick nuts ASTM B211 Alloy 6061-T6 Class 2 thread. Bottom nuts shall be ASTM A184.
  - Dam Plates shall be used to close all open railing ends. Material shall be ASTM B209 Aluminum Alloy 6061-T6. As an alternate, drive-in end caps may be used. Caps shall be aluminum alloy sand mold castings complying with ASTM B26, Alloy SG 356.0-T6.
  - End caps shall be welded to the rails.
  - Where necessary for post alignment, Aluminum Alloy shim material shall be used where required by the Engineer. Shim material shall be ASTM B209, Alloy 1100-O.
  - Paint underside of base with a heavy coat of Non Aluminum Epoxy Mastic Primer.
  - All anchor bolt holes and spaces between base plates and concrete shall be thoroughly caulked with a caulking compound conforming to Federal Specifications A-A-272A, Type III or Type IV.