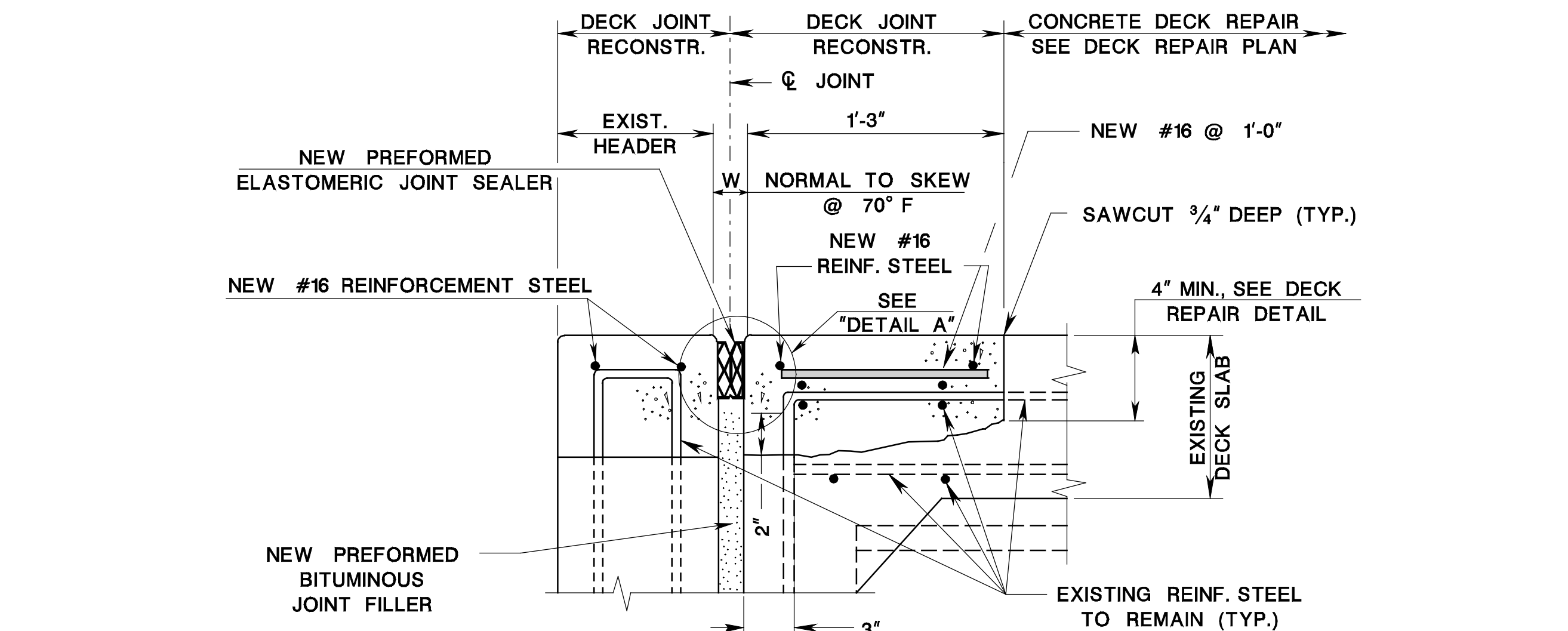
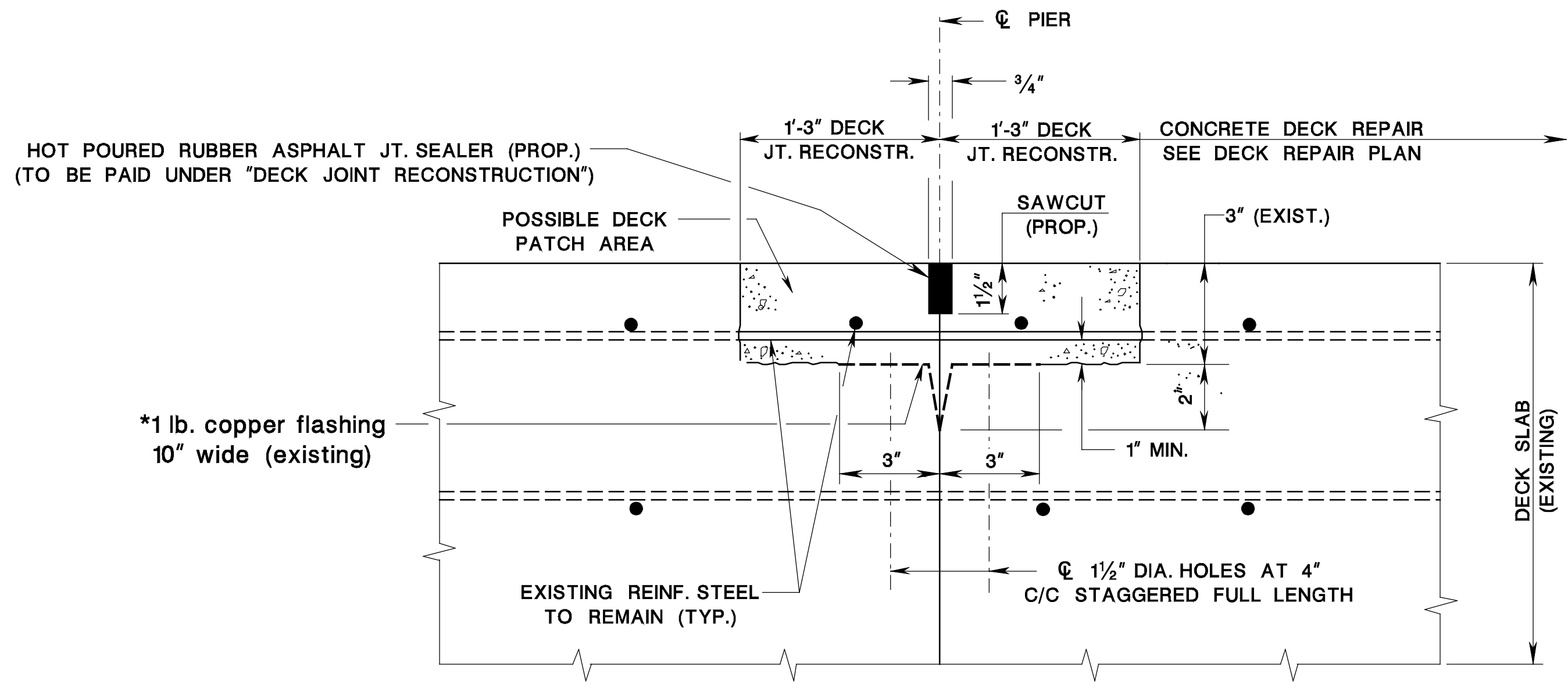


**DECK JOINT AT ABUTMENT WITH APPROACH SLAB**

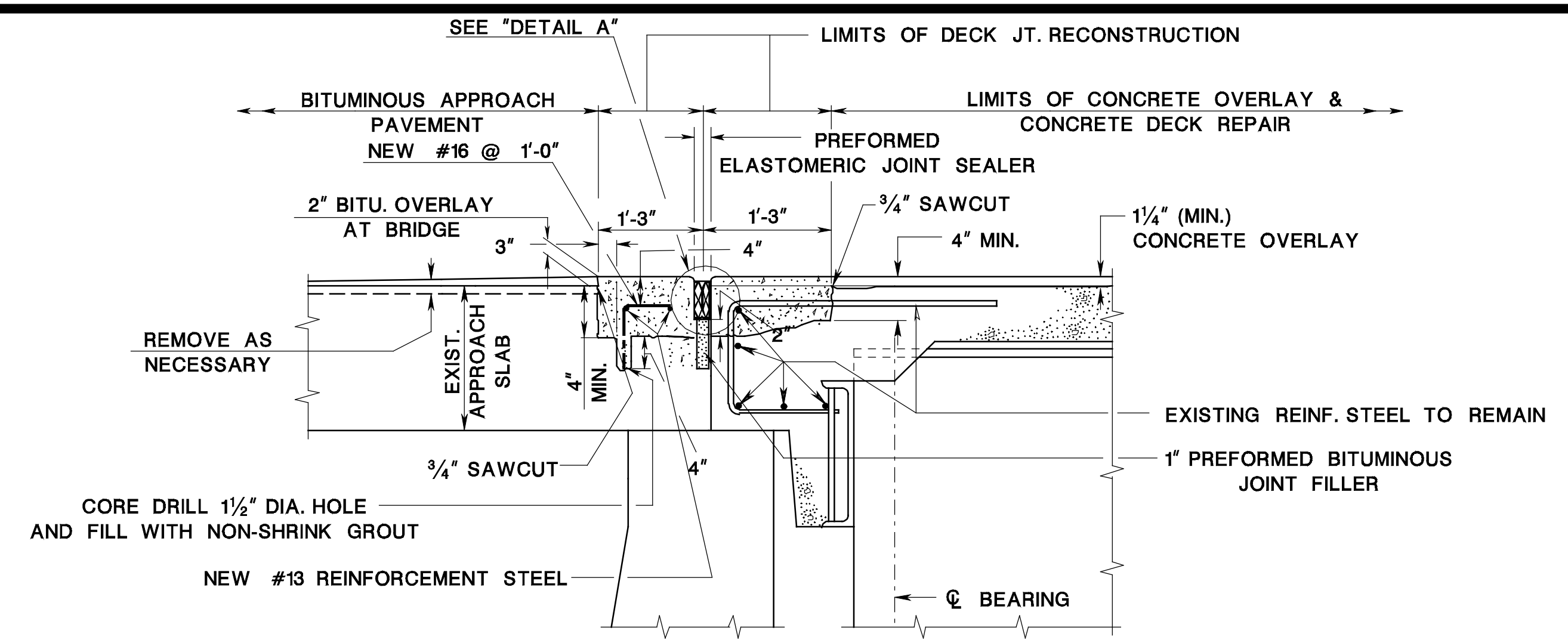


**DECK JOINT AT ABUTMENT WITH HEADER**

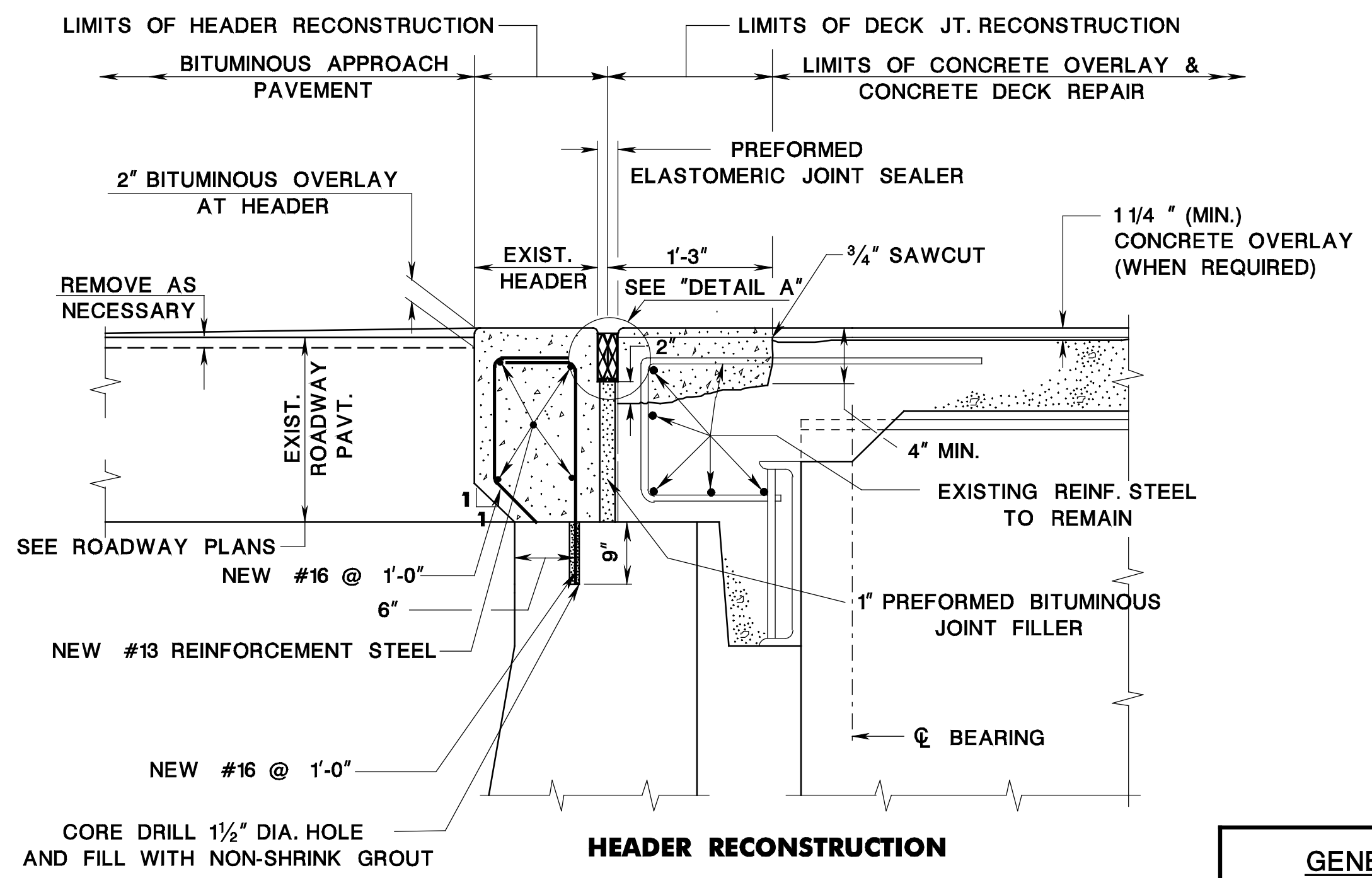


**FIXED DECK JOINT AT PIER**

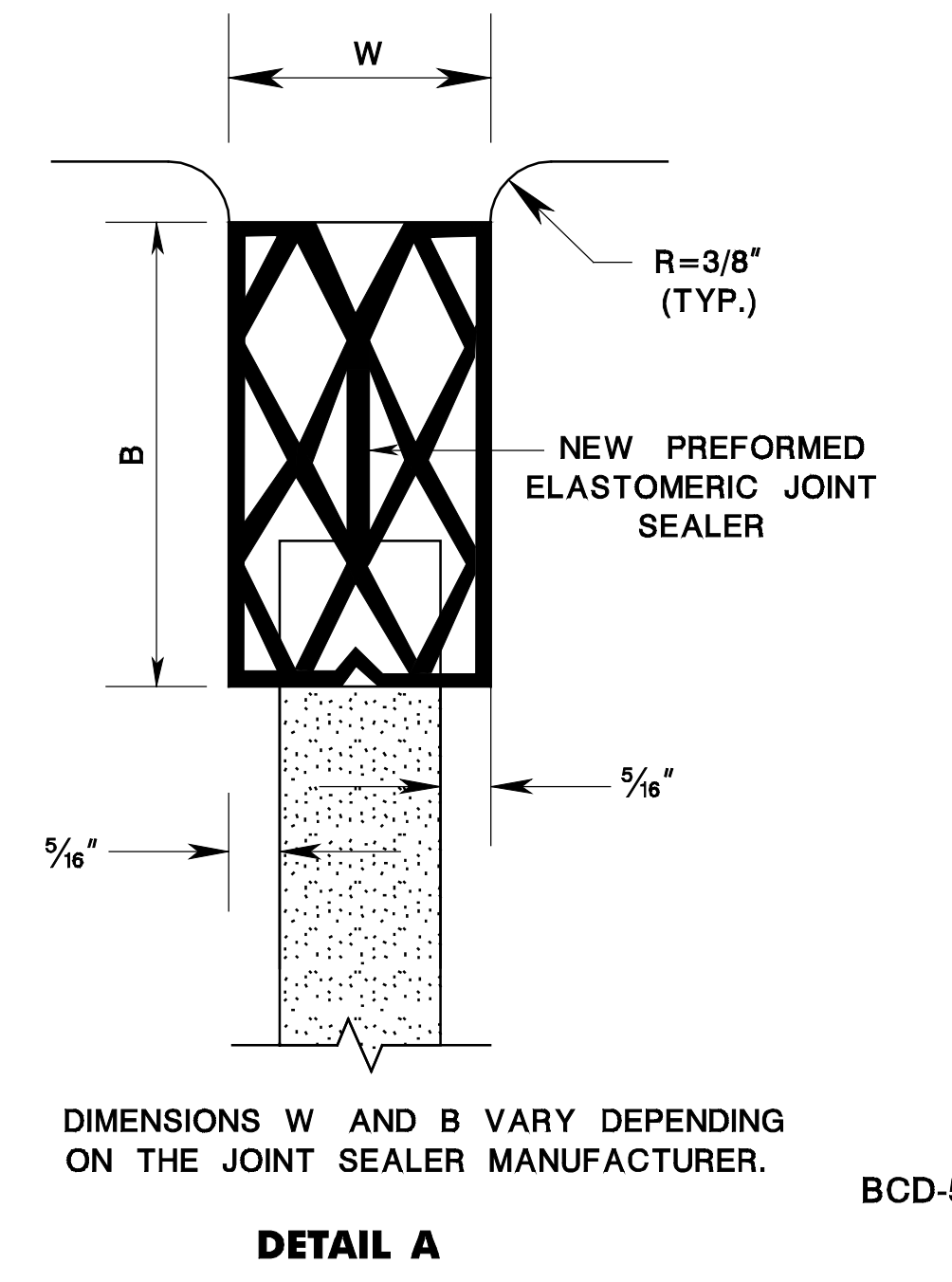
\*THE CONTRACTOR SHALL REPLACE THE EXISTING COPPER FLASHING DURING DECK JOINT RECONSTRUCTION ONLY IF THE AREA OF REPAIR WARRANTS IT BELOW COPPER FLASHING, OR IF EXISTING REINFORCEMENT STEEL IS LESS THAN 1\"/>



**DECK JOINT AT ABUTMENT (WITH APPROACH SLAB AND CONCRETE OVERLAY)**



**HEADER RECONSTRUCTION**



**DETAIL A**

DIMENSIONS W AND B VARY DEPENDING ON THE JOINT SEALER MANUFACTURER.

**GENERAL NOTES:**

- 1 ALL NEW REINFORCEMENT STEEL IS DESIGNATED IN METRIC UNITS AND SHALL BE CORROSION PROTECTED.
- 2 MECHANICAL COUPLERS MAY BE NECESSARY IF CONSTRUCTION IS STAGED.
- 3 PROVIDE AS REQUIRED ARMORED JOINT.

**BRIDGE DECK REHABILITATION DECK JOINT REPAIR (SHEET 1 OF 2)**  
N.T.S.

NEW JERSEY DEPARTMENT OF TRANSPORTATION  
BUREAU OF STRUCTURAL ENGINEERING

**BRIDGE CONSTRUCTION DETAILS**

BCD-551-3.3

BCD-551-3.1

BCD-551-3.4

BCD-551-3.2

BCD-551-3.5

BCD-551-3

pin table = Y:\PROJECTS\Projects\NJDOT\Tag\pin.tbl

scale = 0.003937:0.00000

date = 17-DEC-2007 10:02

ID = TPX02H1V

BCD-551-01-ORIGINAL SHEET

file=