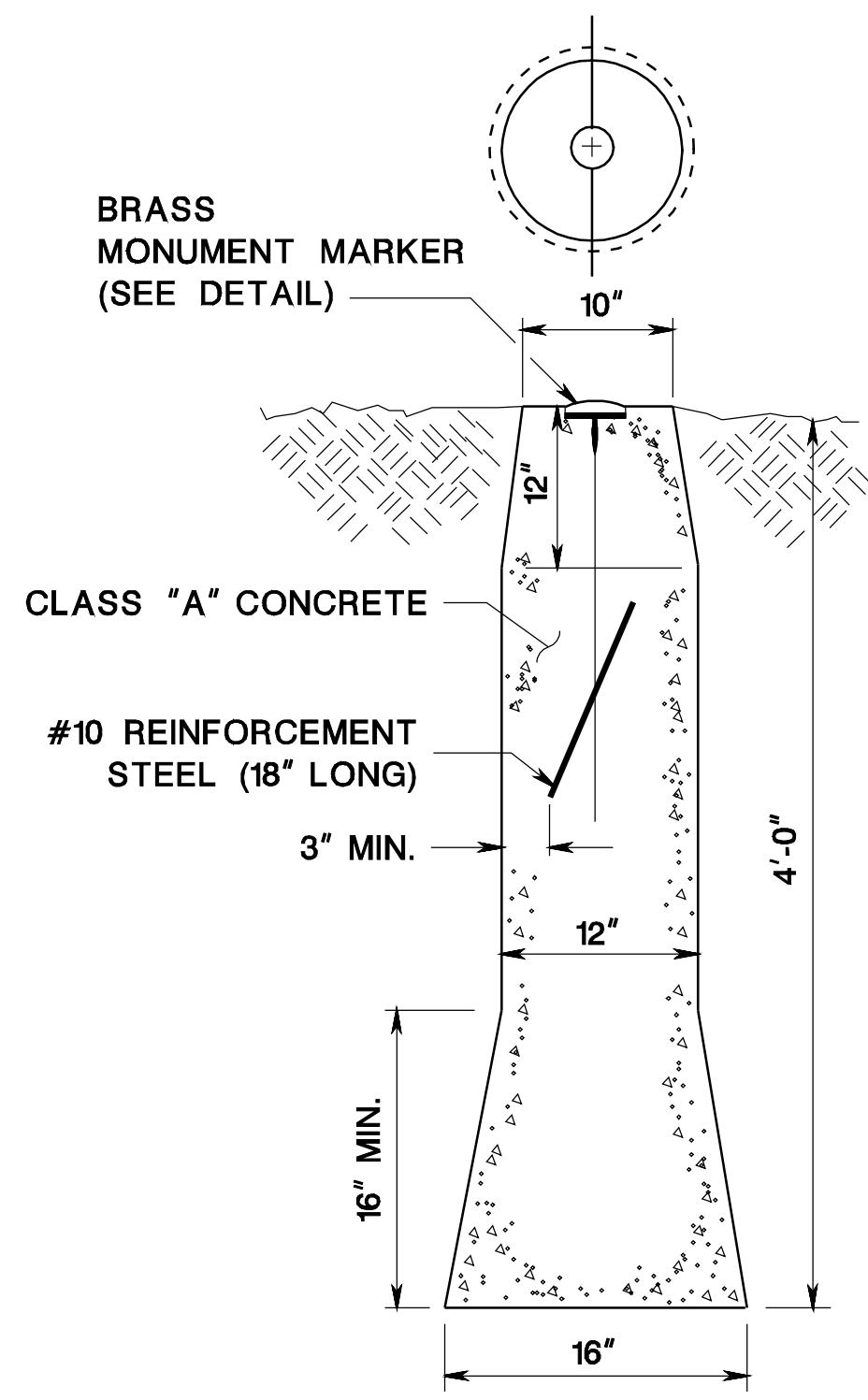


pen table= \\N\jdotprjw\vsystem\NJDOTWS\Projects\NJDOTEng\Plot\TBLS\Roadway\basic.tbl
 scale= 30.0000000:1.0000000
 date= 17-DEC-2007 09:37
 ID= TPXBHAY

BDC07D-01-ORIGINAL SHEET



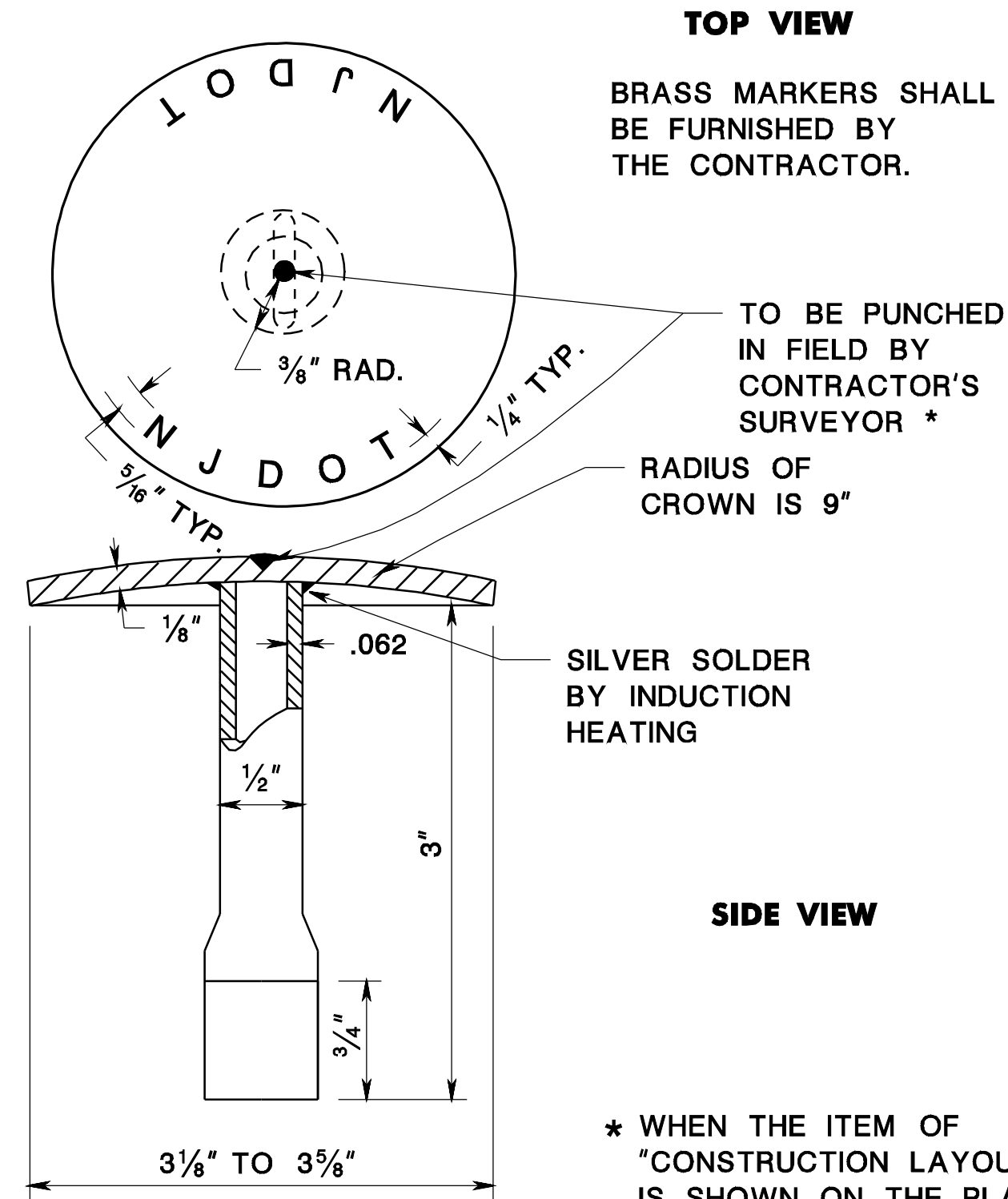
MONUMENT TO BE SET FLUSH WITH GROUND

GENERAL NOTES:

- THE MONUMENT SHALL BE CONSTRUCTED IN ACCORDANCE WITH NJDOT SPECIFICATIONS.
- THE MONUMENT IS TO BE POURED IN PLACE AND THE MARKER PLUMBED INTO POSITION AND SET IN THE CONCRETE IN SUCH A MANNER THAT NO AIR WILL BE TRAPPED ON THE UNDERSIDE OF THE MARKER.
- #10 REINFORCEMENT STEEL, 18" LONG, TO BE PLACED AT THE TIME OF CONCRETE POUR.
- THE MONUMENT MARKER SHALL BE MADE OF BRASS, CONFORMING TO ASTM B-19.

MONUMENT

CD-157-1.1



TOP VIEW

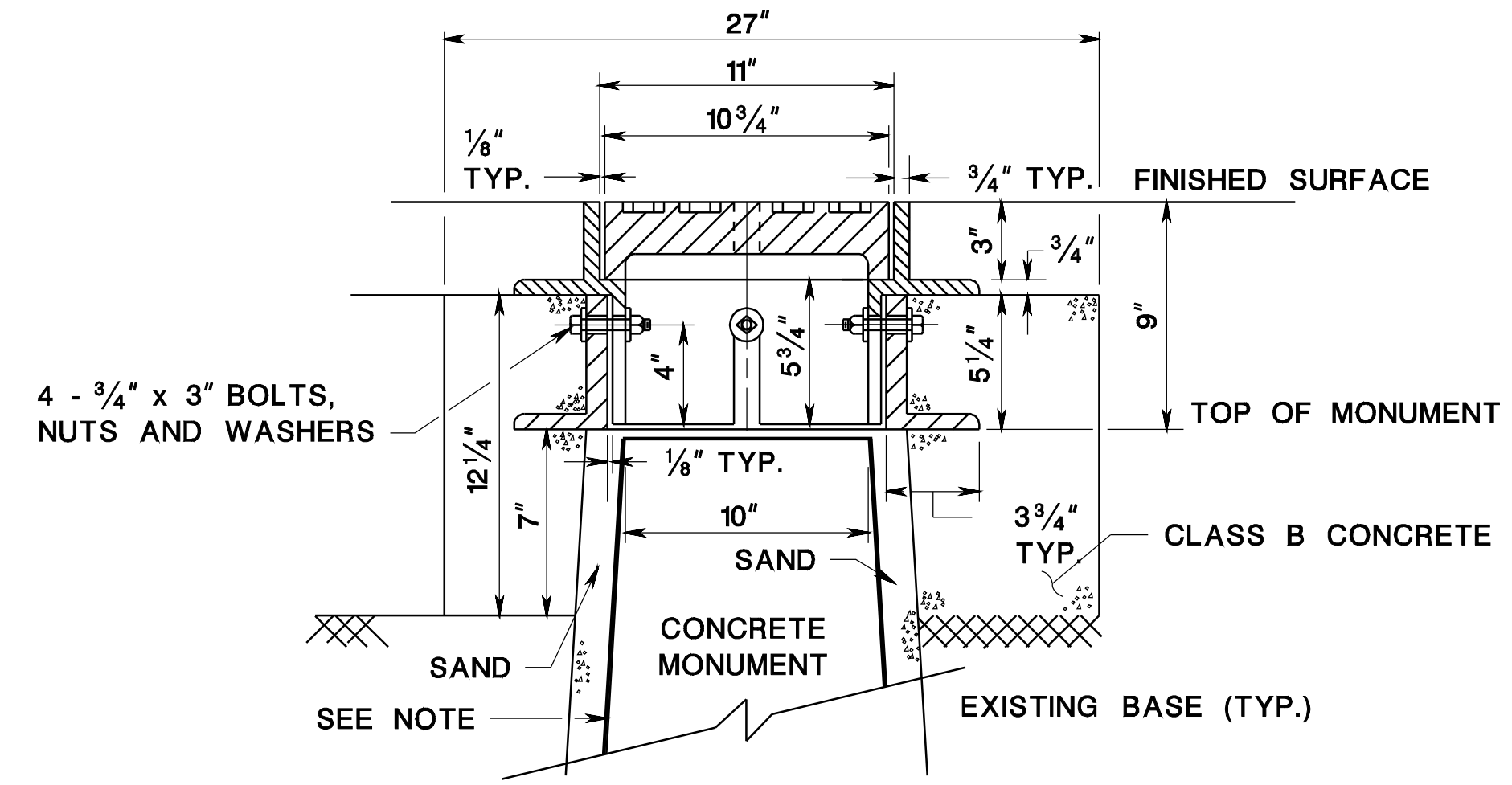
BRASS MARKERS SHALL BE FURNISHED BY THE CONTRACTOR.

TO BE PUNCHED IN FIELD BY CONTRACTOR'S SURVEYOR *

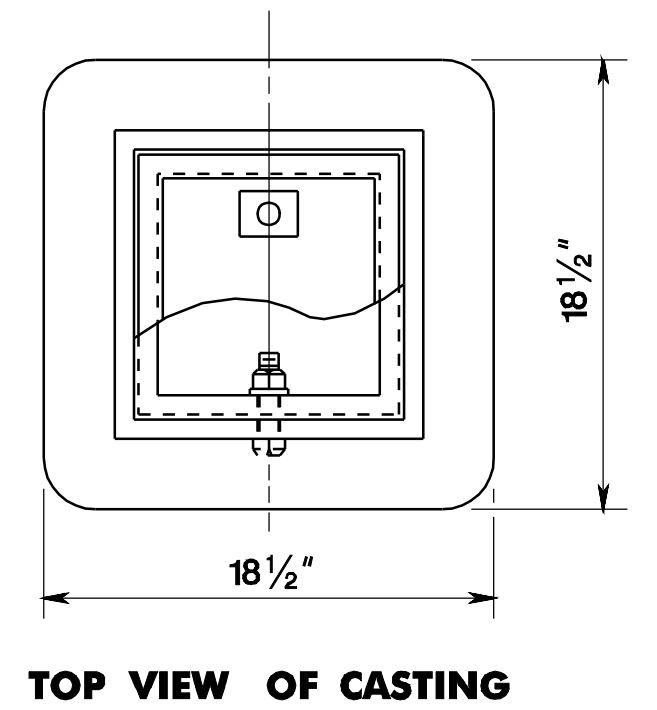
RADIUS OF CROWN IS 9"

SIDE VIEW

* WHEN THE ITEM OF "CONSTRUCTION LAYOUT" IS SHOWN ON THE PLANS.



MONUMENT BOX FOR NEW MONUMENT



NOTE:

A LAYER OF FELT OR NYLON OR TAR PAPER NEEDED BETWEEN SAND AND CONCRETE MONUMENT.

CD-157-1.2

REINFORCEMENT STEEL IS IN METRIC UNITS.

MONUMENT AND MONUMENT BOX

N.T.S.

CD-157-1

NEW JERSEY DEPARTMENT OF TRANSPORTATION

CONSTRUCTION DETAILS