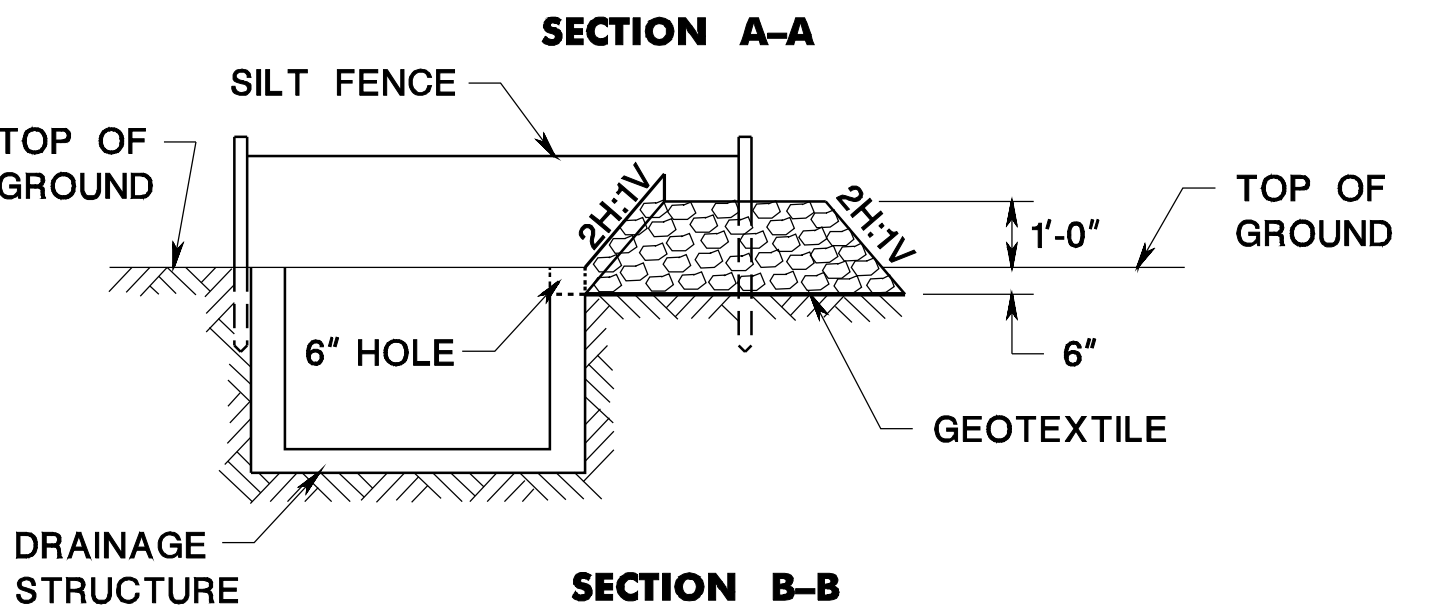
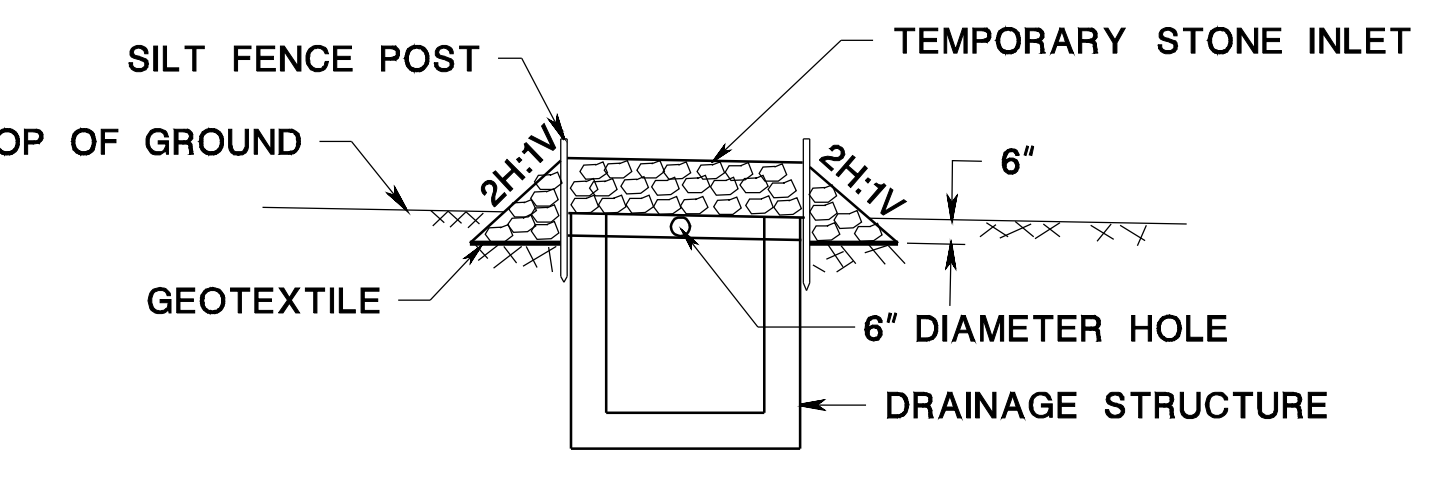
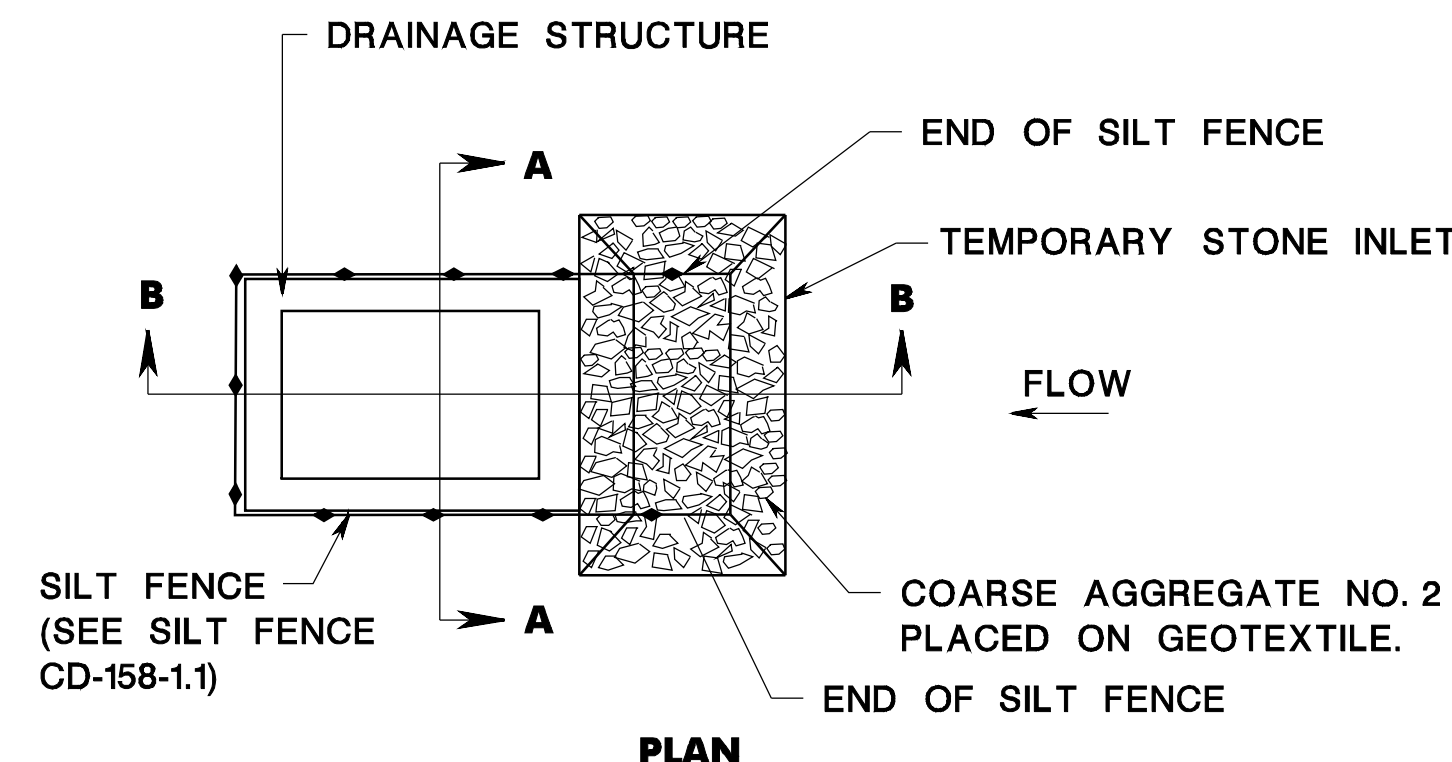


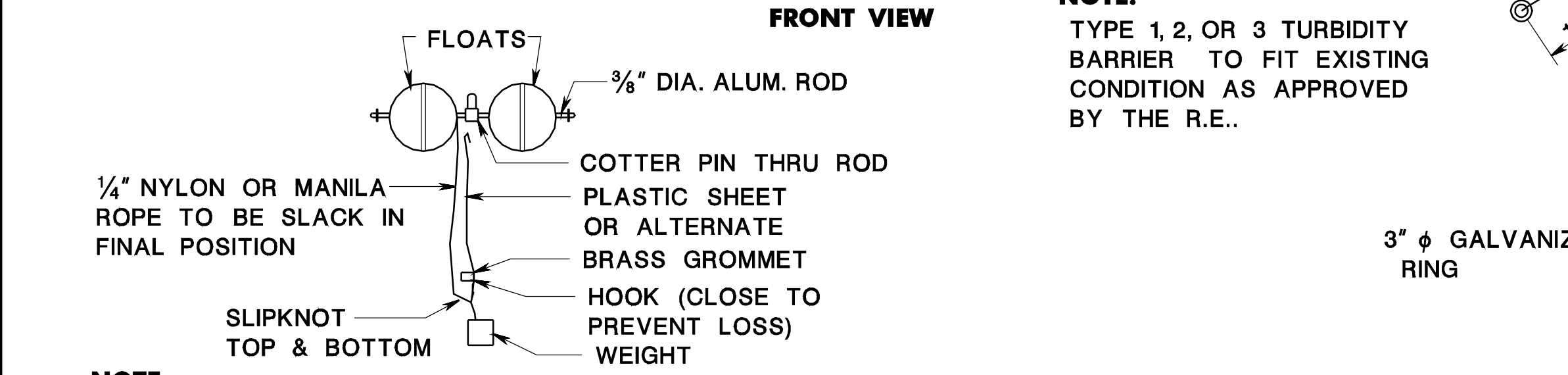
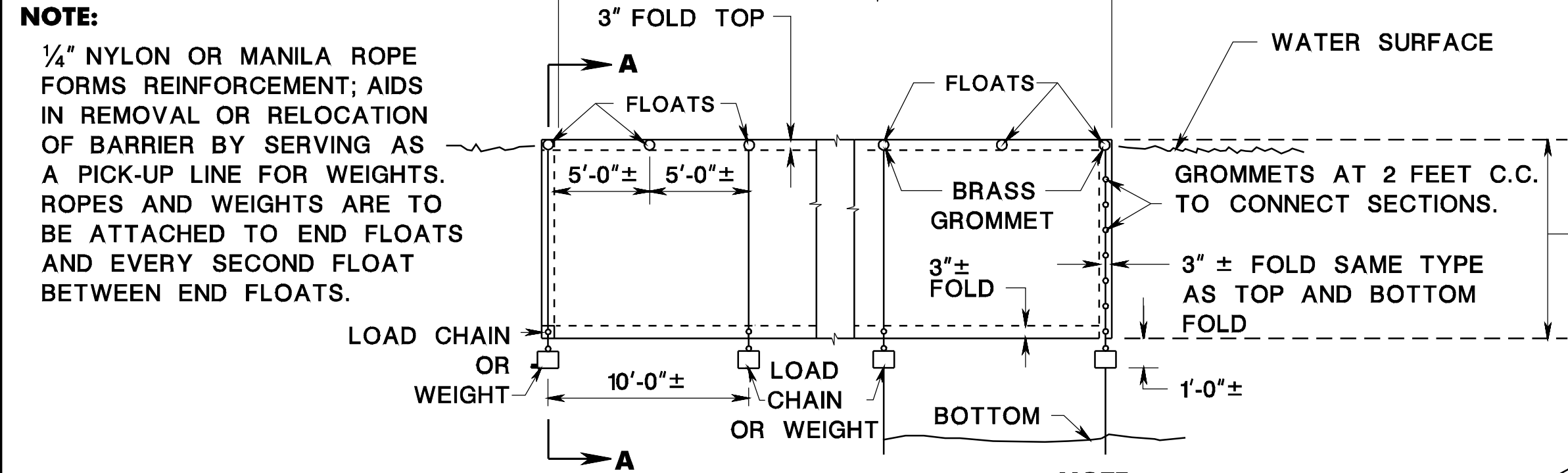
pen table= \\N\jdotprjws\vsystem\NJDOTWS\Projects\NJDOTEng\Plot\TBLS\Roadway\basic.tbl
 scale= 30.0000000:1.0000000
 date= 17-DEC-2007 09:37
 ID= TPXBHAY
 BDC0703-ORIGINAL SHEET



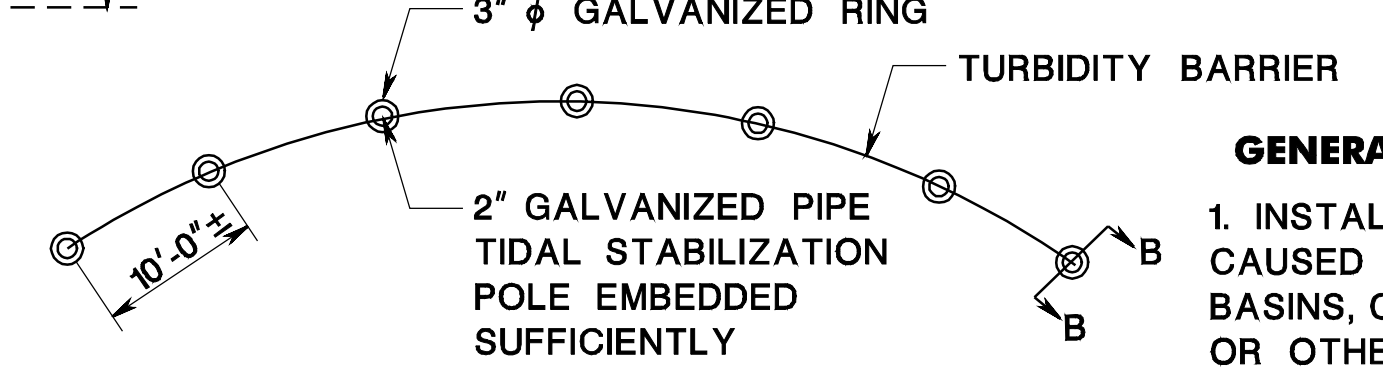
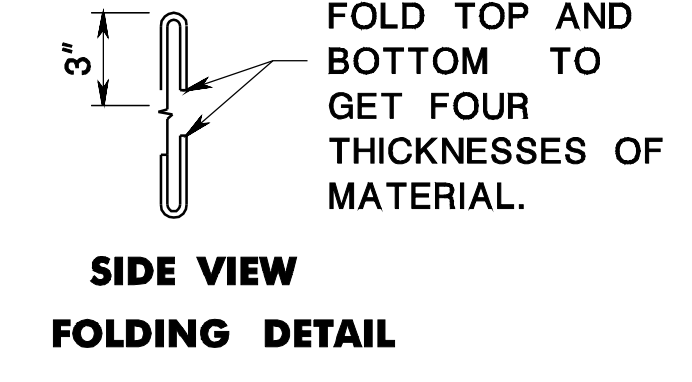
NOTE: REFER TO CD-158-2.4 SECTION A-A FOR TREATMENT OF 6" HOLE.

INLET SEDIMENT TRAP

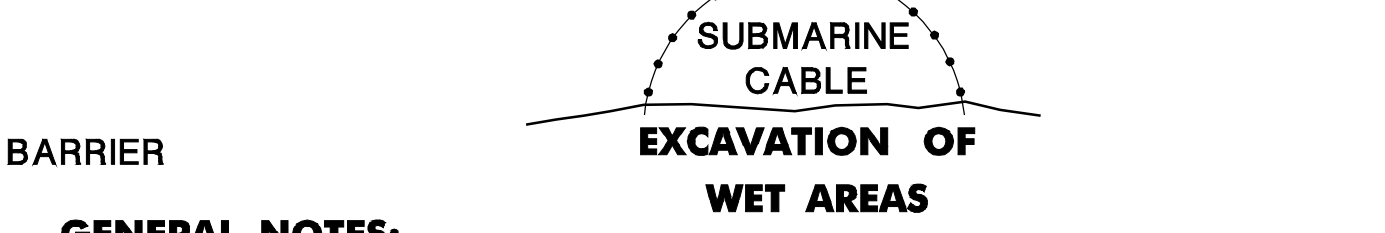
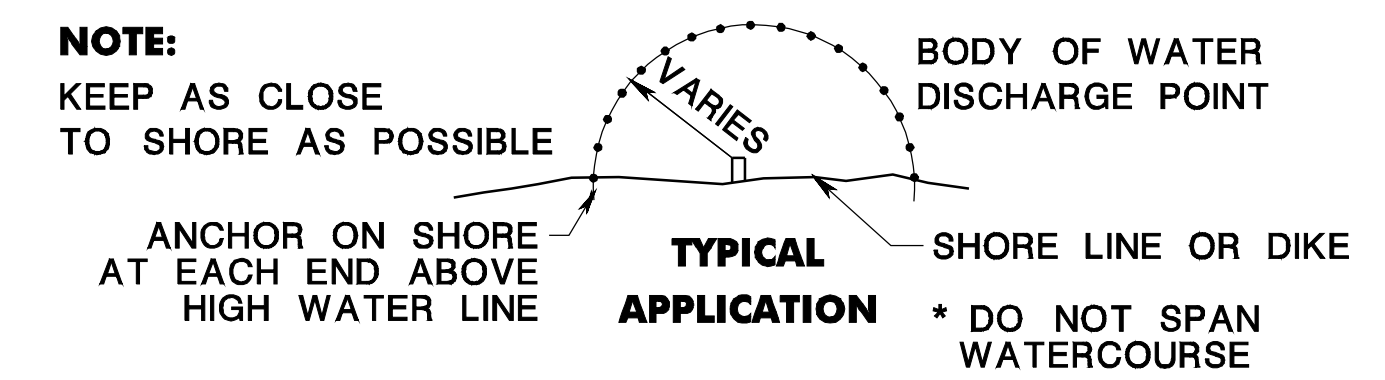
CD-158-3.1



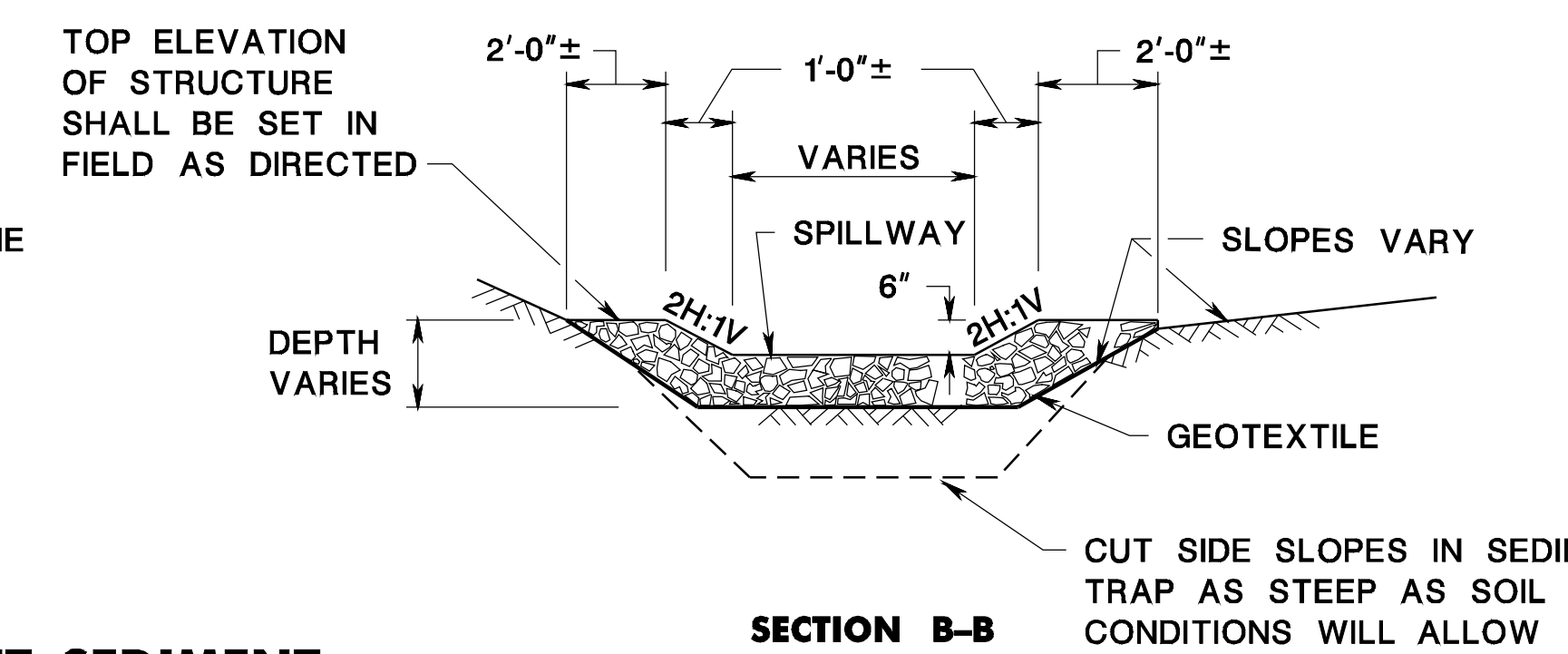
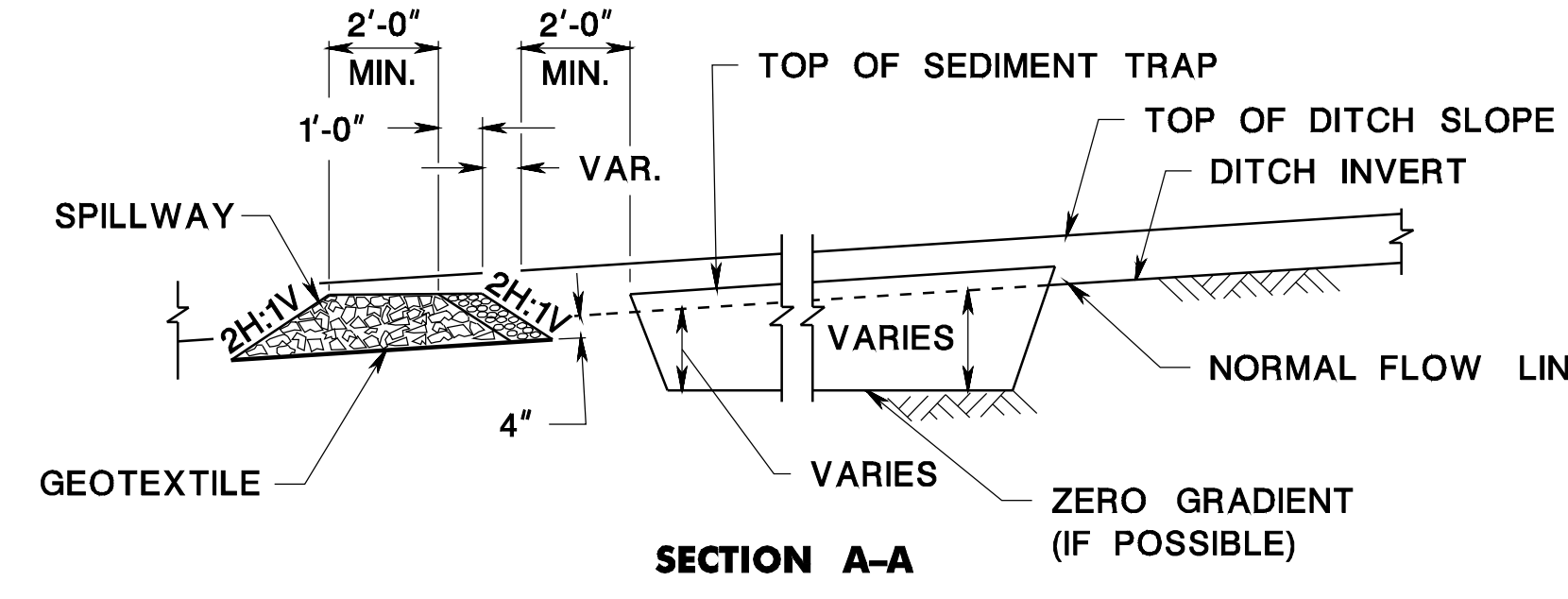
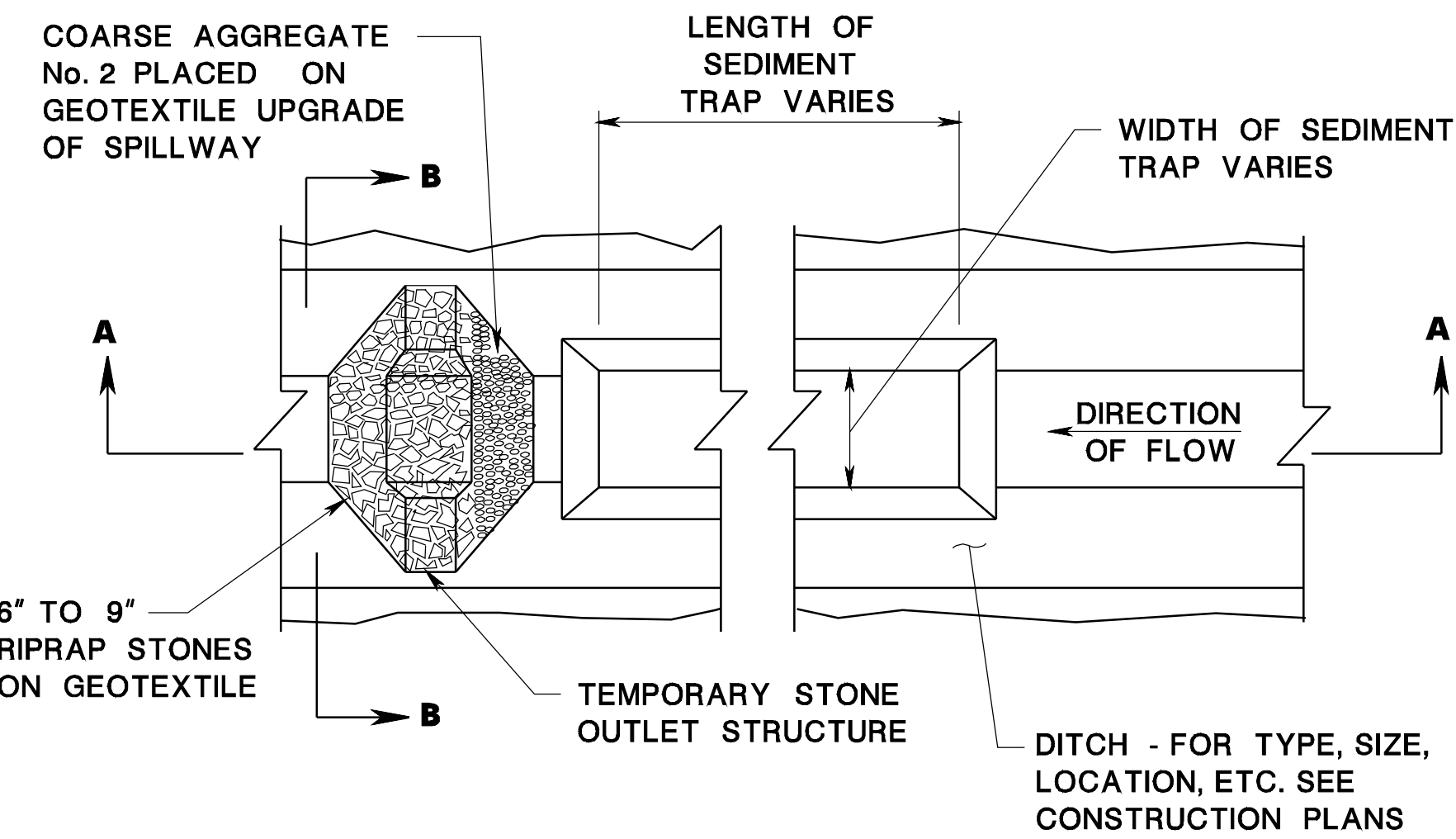
NOTE: SUITABLE ALTERNATE MAY BE FASTENED TO STAKES DRIVEN INTO THE BOTTOM IN LIEU OF FLOATS AND WEIGHTS



FLOATING TURBIDITY BARRIER

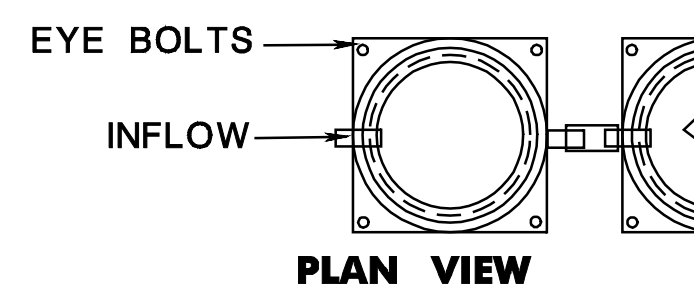


- GENERAL NOTES:**
1. INSTALL TURBIDITY BARRIER TO PREVENT DRIFTING OF SILT CAUSED BY DISCHARGE OF STORM SEWERS, DEWATERING BASINS, CONSTRUCTION, DREDGING OR FILLING OPERATIONS, OR OTHER ACTIVITIES THAT COULD CAUSE TURBIDITY.
 2. EXACT PLACEMENT OF TURBIDITY BARRIER SHALL BE SO AS TO EFFECTIVELY CONTROL SILT DISPERSION UNDER THE CONDITIONS PRESENT ON A PARTICULAR PROJECT.
 3. THE DETAILS SHOWN ON THIS SHEET ARE SUGGESTED METHODS ONLY. ALTERNATE SOLUTION AND USAGE OF MATERIALS MAY BE USED AS APPROVED.
 4. USE APPROPRIATE NAVIGATIONAL WARNING LIGHTS WHEN USED NEXT TO NAVIGATIONAL CHANNEL.
 5. TYPE 1 IS FOR PONDS, SHALLOW LAKES, SMALL STREAMS AND MARSHES WITH CURRENT VELOCITIES LESS THAN 1 FT./SEC AND SHELTERED FROM WINDS.
 6. TYPE 2 IS FOR LAKES, STREAMS, INTERCOASTAL & TIDAL AREAS WITH CURRENT VELOCITIES UP TO 5 FT./SEC.
 7. TYPE 3 IS FOR LAKES, STREAMS, INTERCOASTAL AND TIDAL AREAS WITH CONSIDERABLE CURRENT VELOCITIES UP TO 5 FT./SEC., TIDAL ACTION AND SUBJECT TO WIND AND WAVES.
- CD-158-3.2

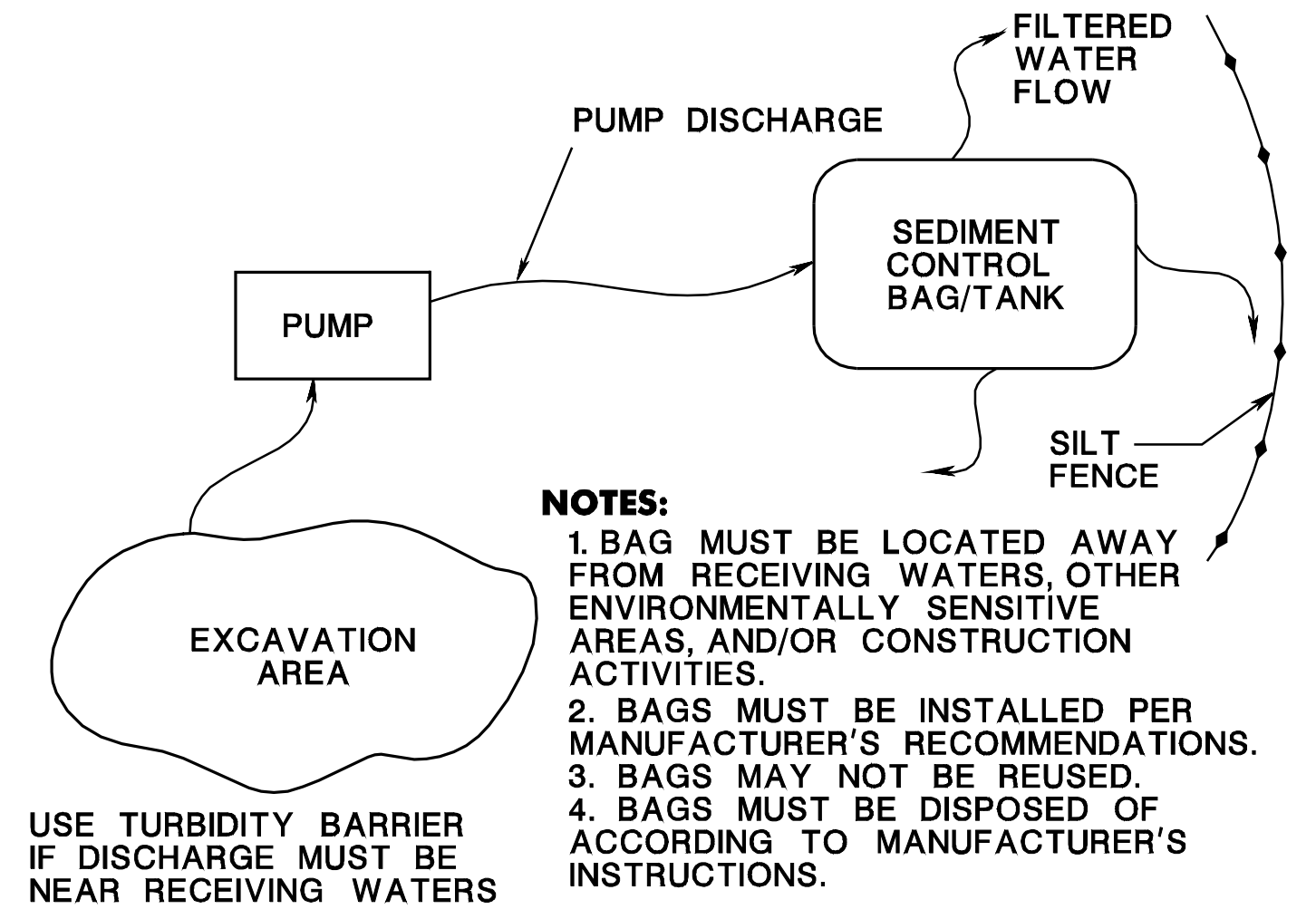
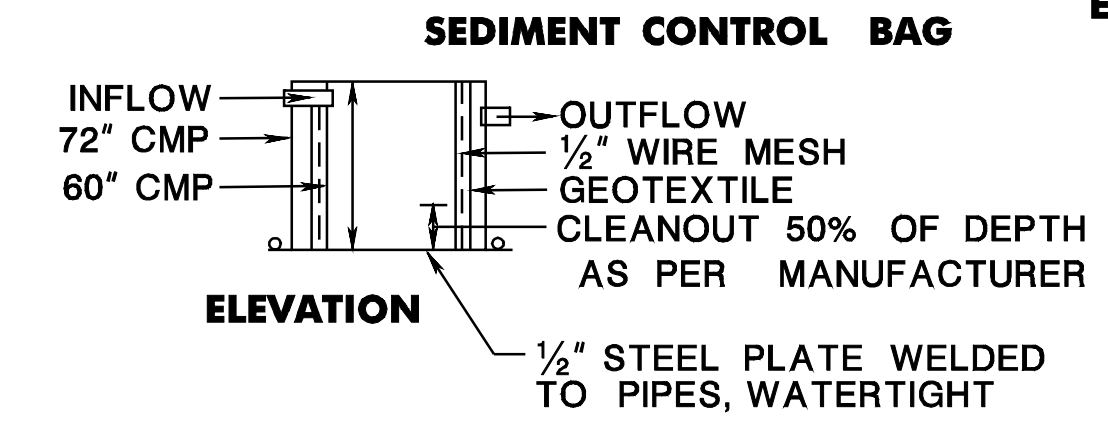
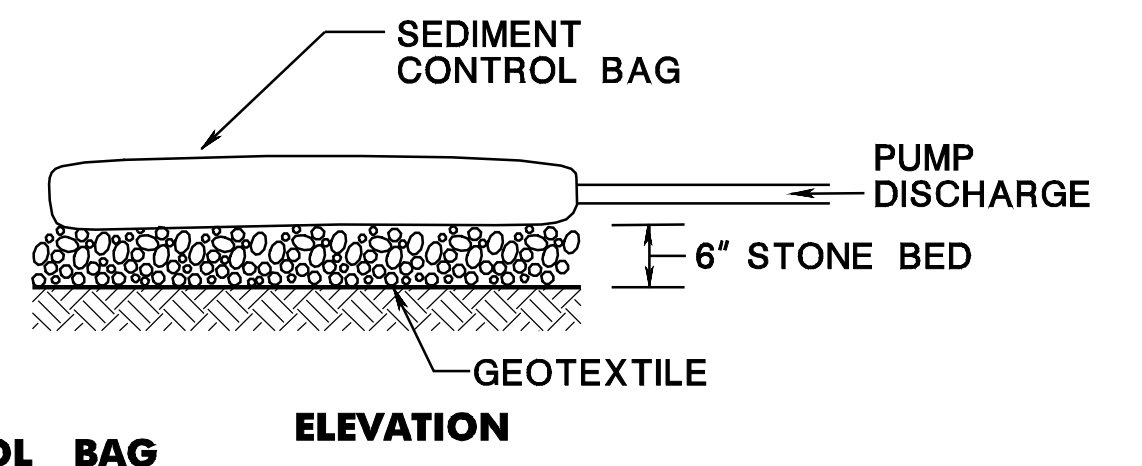


STONE OUTLET SEDIMENT TRAPS, ___' x ___'

CD-158-3.3



EXAMPLE OF PORTABLE SEDIMENT TANK



- NOTES:**
1. BAG MUST BE LOCATED AWAY FROM RECEIVING WATERS, OTHER ENVIRONMENTALLY SENSITIVE AREAS, AND/OR CONSTRUCTION ACTIVITIES.
 2. BAGS MUST BE INSTALLED PER MANUFACTURER'S RECOMMENDATIONS.
 3. BAGS MAY NOT BE REUSED.
 4. BAGS MUST BE DISPOSED OF ACCORDING TO MANUFACTURER'S INSTRUCTIONS.

SEDIMENT CONTROL TANK OR BAG

CD-158-3.4

SOIL EROSION AND SEDIMENT CONTROL MEASURES

N.T.S.

NEW JERSEY DEPARTMENT OF TRANSPORTATION

CONSTRUCTION DETAILS

CD-158-3