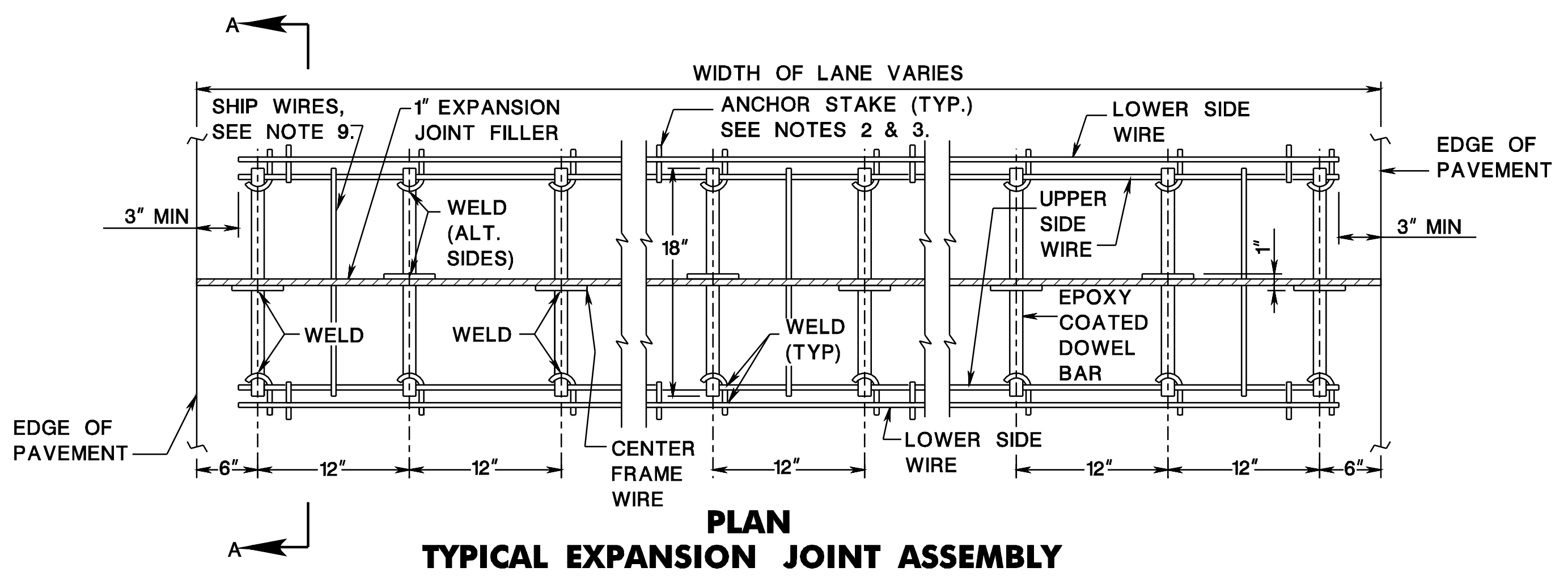
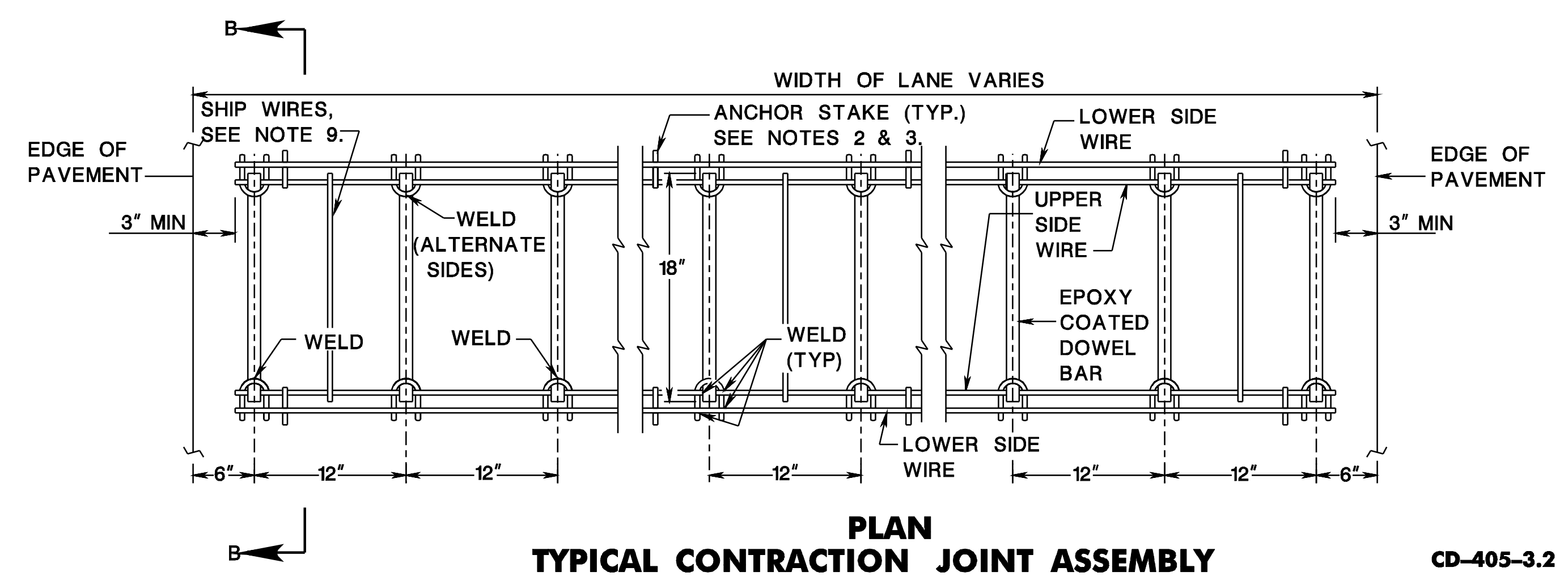


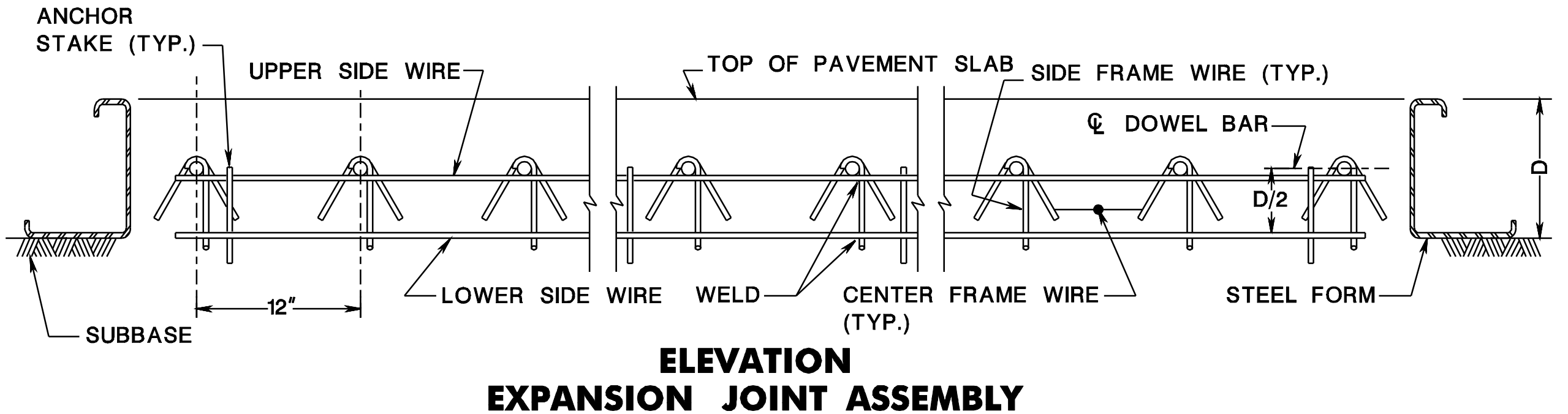
pen table= \\nidotprjw\resystem\NJDOT\TWS\Projects\NJDOT\Eng\pilot\TBLs\Roadway\basic.tbl
 scale= 30.000000,1.000000
 date= 17-DEC-2007 09:41
 ID= TPXBHAY
 BDC07D-01-ORIGINAL SHEET



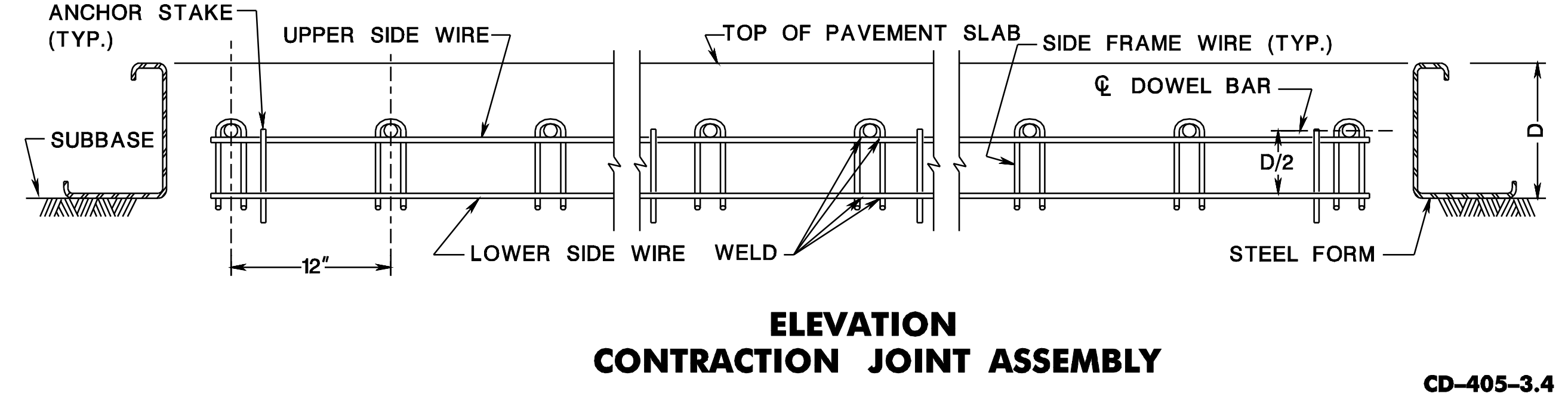
CD-405-3.1



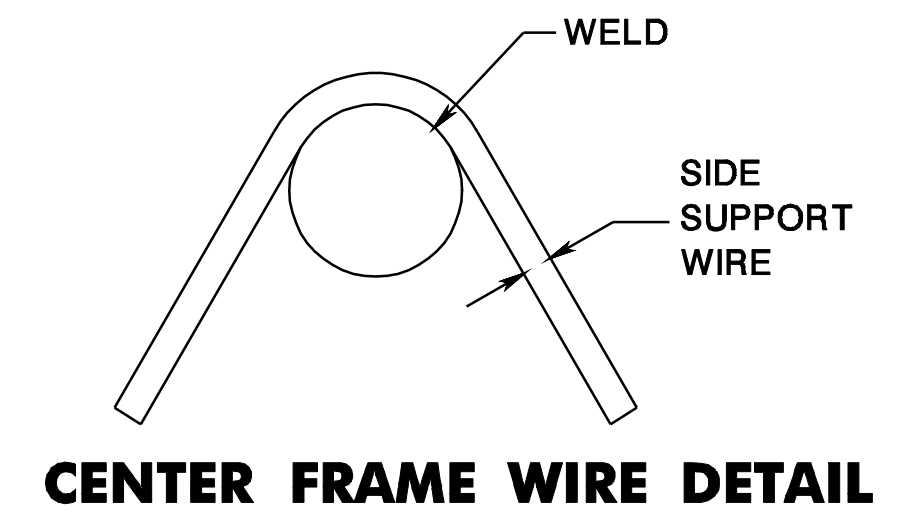
CD-405-3.2



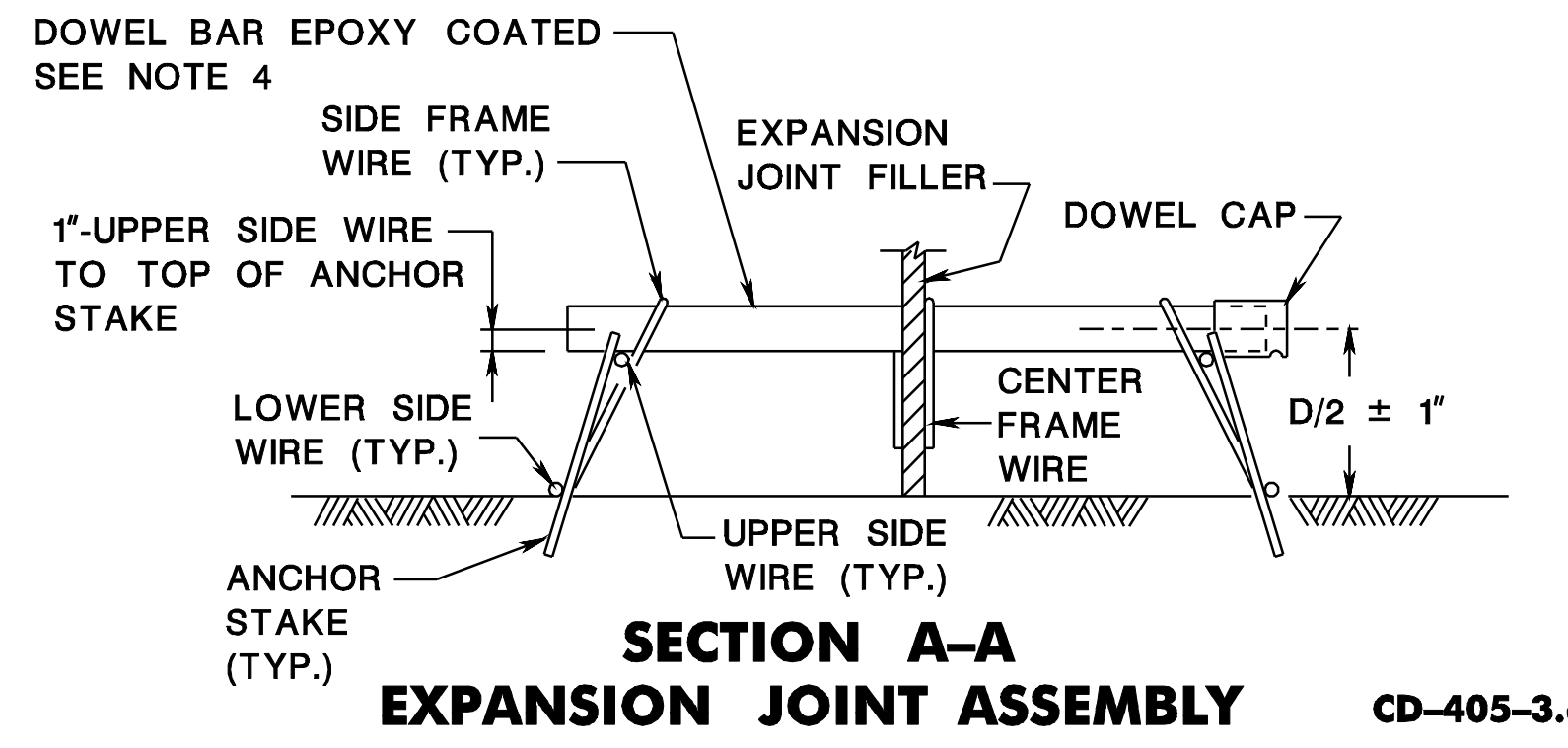
CD-405-3.3



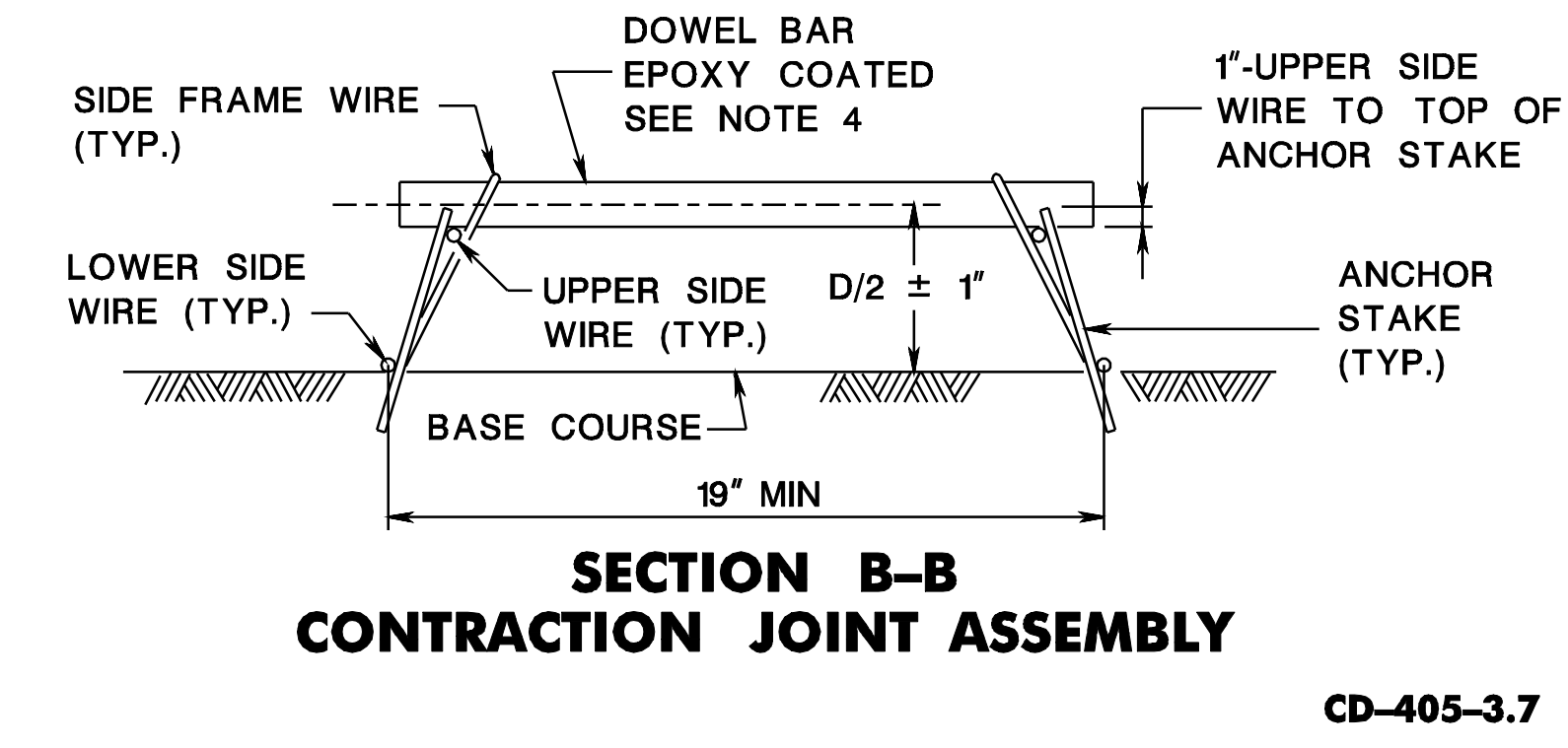
CD-405-3.4



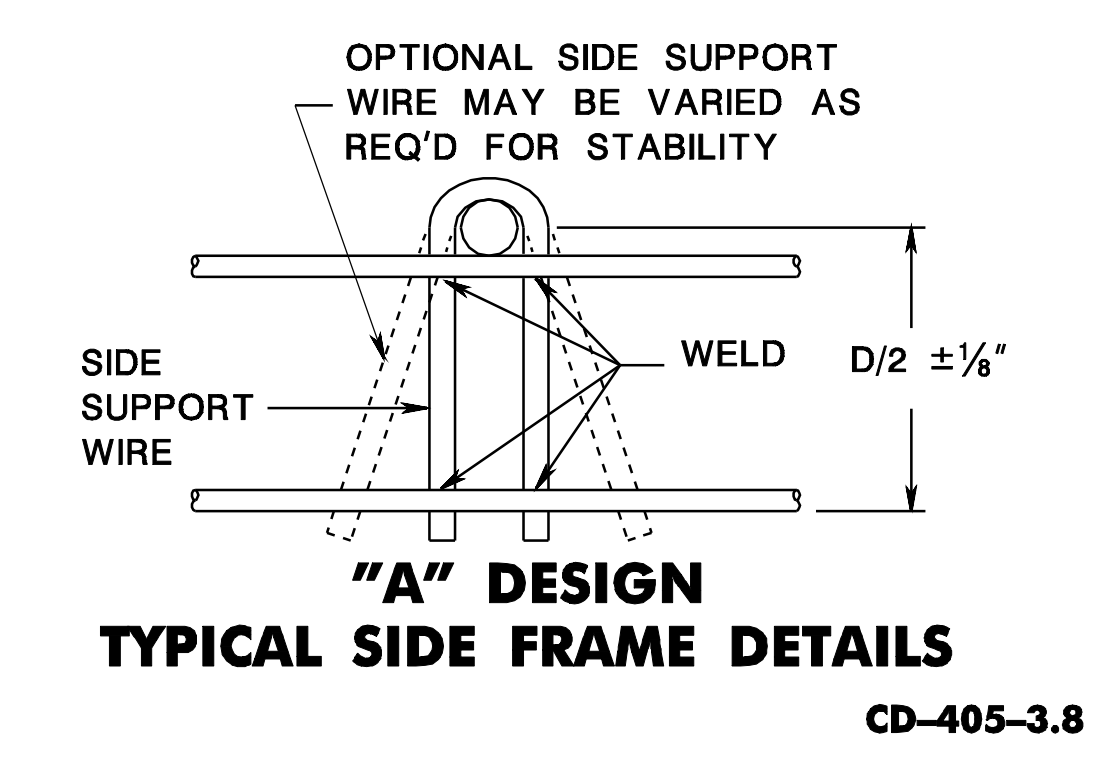
CD-405-3.5



CD-405-3.6



CD-405-3.7



CD-405-3.8

NOTES

- THIS STANDARD DEPICTS THE DIMENSIONS REQUIRED FOR UNIFORMITY AND COMPATIBILITY. IT DOES NOT INCLUDE ALL THE DETAILS REQUIRED FOR FABRICATION. ANCHOR STAKES SHOULD NOT TOUCH ANY DOWEL BAR AND MAY BE SPACED AS NEEDED TO PROVIDE STABILITY.
- PROVIDE A MINIMUM OF EIGHT ANCHOR STAKES (FOUR PER SIDE). ANCHOR STAKES SHALL ENGAGE LOWER SIDE FRAME WIRES. USE ADDITIONAL STAKES AS NECESSARY, TO SECURE ASSEMBLIES, AS DIRECTED BY THE R.E..
- PROVIDE 12 INCH MINIMUM ANCHOR STAKES TO SECURE ASSEMBLIES WHEN SUBBASE IS USED AND 18 INCH MINIMUM ANCHOR STAKES WHEN AN OPEN GRADED DRAINAGE LAYER IS USED.
- PROVIDE DOWEL BARS PARALLEL TO THE CENTERLINE AND TO THE PAVEMENT SURFACE. TOLERANCE OF THIS PLACEMENT SHALL BE WITHIN 1/4 INCH PER DOWEL BAR.
- PROVIDE FRAME SUPPORT ASSEMBLY WIRES CONFORMING TO THE CURRENT ASTM DESIGNATION A-510 SPECIFICATIONS FOR WIRE RODS AND COURSE ROUND WIRE, CARBON STEEL AND OF A MINIMUM ALLOWABLE SIZE AS FOLLOWS:

PAVEMENT THICKNESS	UPPER AND LOWER SIDE FRAME WIRES	SIDE SUPPORT WIRES
10" OR LESS	0.331" φ MIN 2/0 GAUGE	0.331" φ MIN 2/0 GAUGE
GREATER THAN 10"	0.362" φ MIN 3/0 GAUGE	0.362" φ MIN 3/0 GAUGE

- PROVIDE DOWEL BARS PARALLEL TO THE CENTERLINE AND TO THE PAVEMENT SURFACE. MAKE TOLERANCE OF THIS PLACEMENT WITHIN ± 1/4" PER DOWEL BAR.

- WELD REQUIREMENTS AS LISTED BELOW AND TESTED PER MANUFACTURER'S QUALITY CONTROL PLANS FOR WELD SHEAR.

PAVEMENT THICKNESS	UPPER AND LOWER WIRE TO SIDE SUPPORT	DOWEL TO SUPPORT ASSEMBLY
10" OR LESS	794 LBS.	1190 LBS.
> 10"	1190 LBS.	1984 LBS.

- WIRE TOLERANCES PER ASTM 510M IS 0.003in.
- AFTER EACH LOAD TRANSFER ASSEMBLY IS SECURED IN PLACE, REMOVE AND PROPERLY DISPOSE OF ALL TIE WIRES OR SHIPPING WIRES.

TYPICAL LOAD TRANSFER ASSEMBLY		
LANE WIDTH	OVERALL UNIT LENGTH	NO. OF DOWELS
9'-0"	8'-6"	9
10'-0"	9'-6"	10
11'-0"	10'-6"	11
12'-0"	11'-6"	12

CD-405-3.9

**CONCRETE PAVEMENT JOINTS
NON-SKEWED LOAD
TRANSFER ASSEMBLIES**

N.T.S.

CD-405-3

NEW JERSEY DEPARTMENT OF TRANSPORTATION

CONSTRUCTION DETAILS