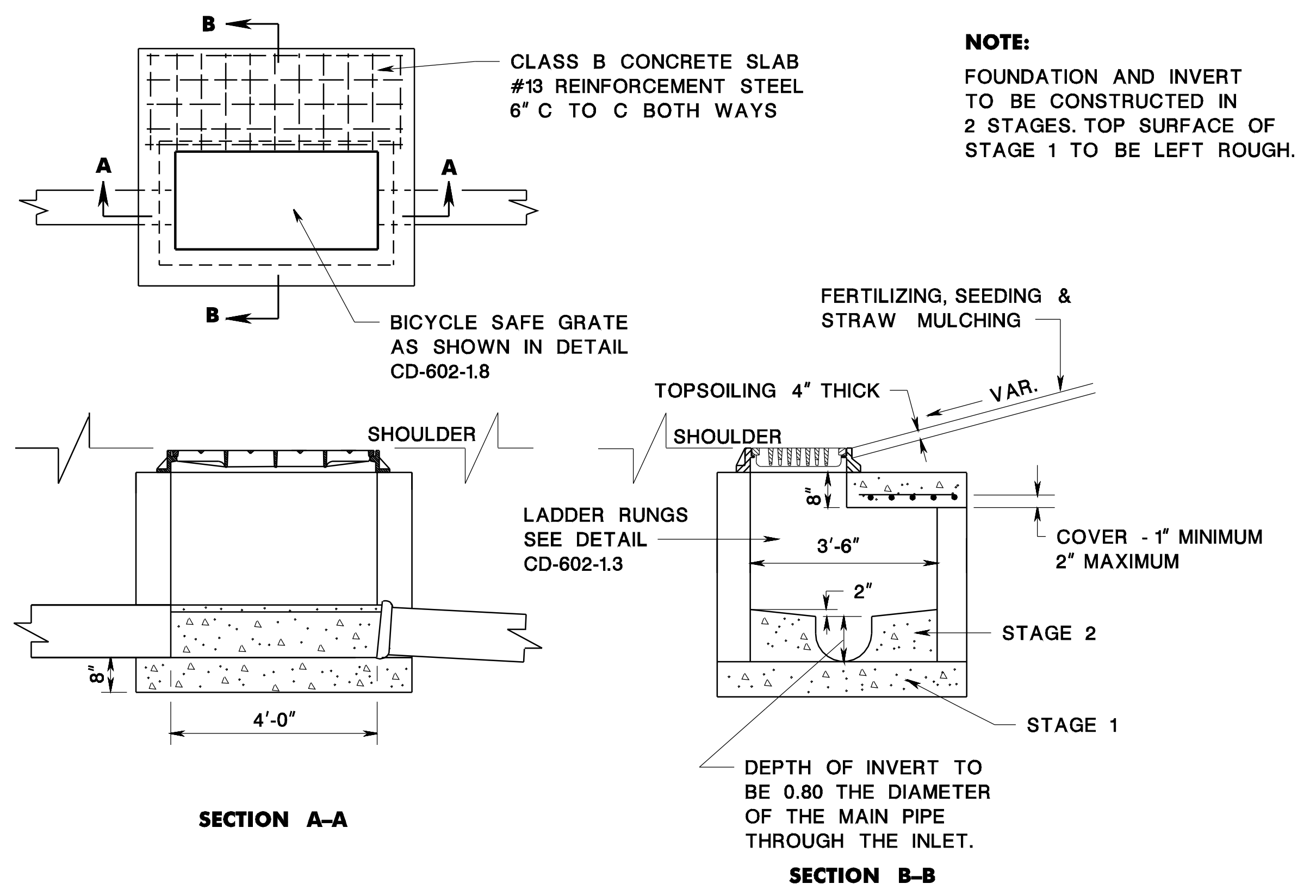
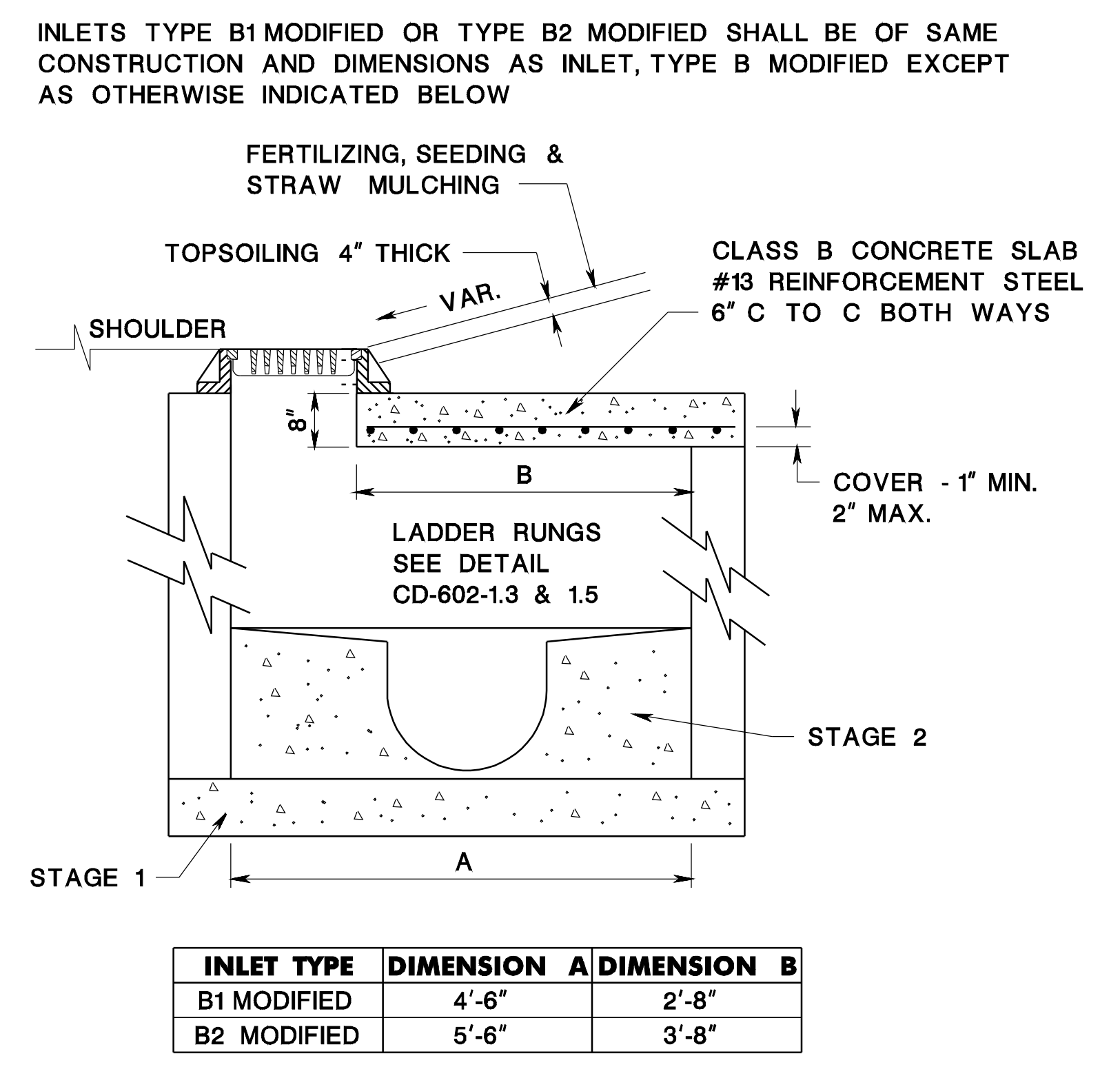


pen table= \\N\jdotprjws\vsystem\NJDOT\Projects\NJDOTEng\Plot\TBLA\Roadway\basic.tbl
 scale= 30.0000000:1.0000000
 date= 17-DEC-2007 09:43
 ID= TFXBHAY
 BDC070-01-ORIGINAL SHEET



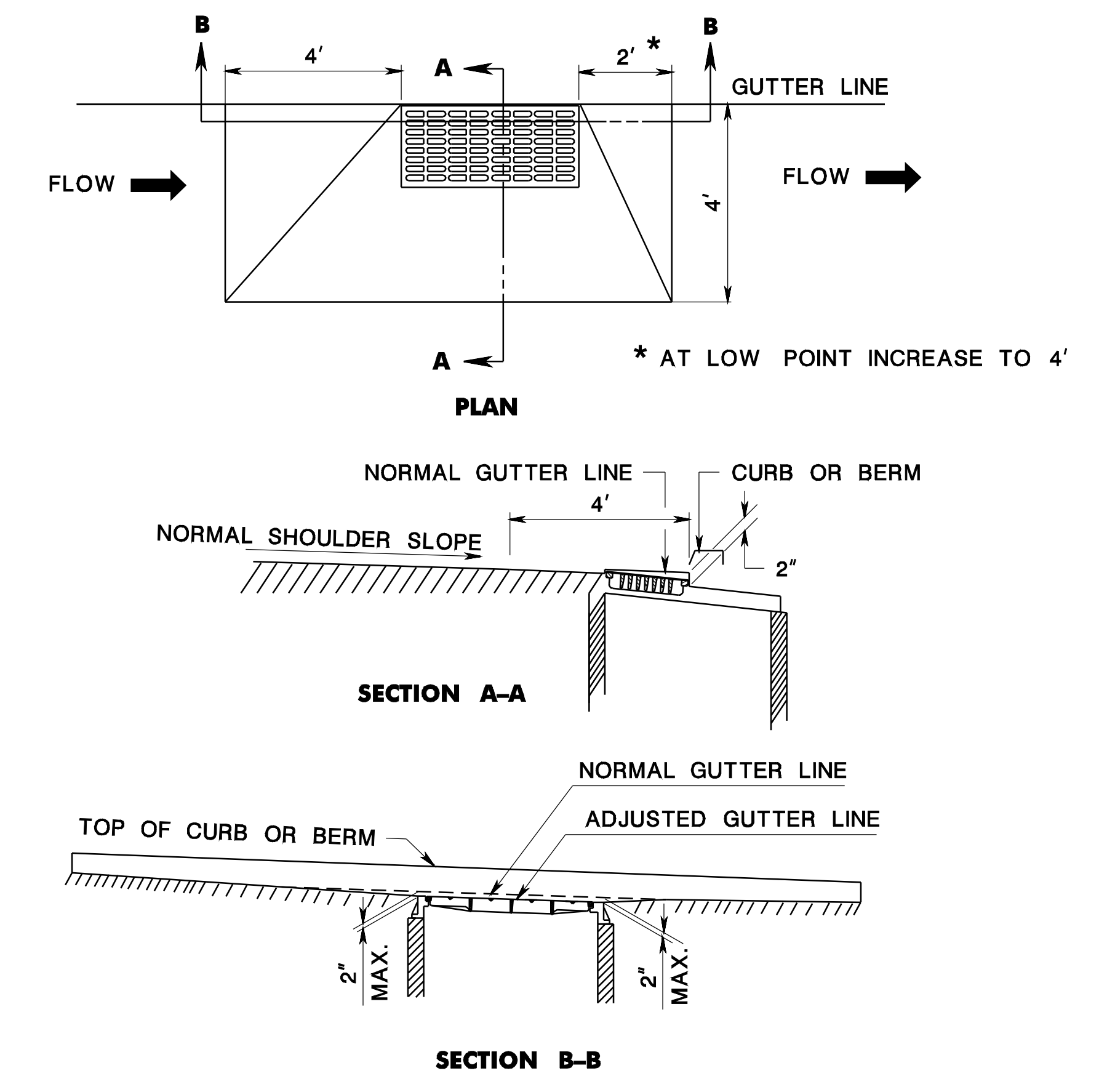
INLET, TYPE B MODIFIED

CD-602-3.1



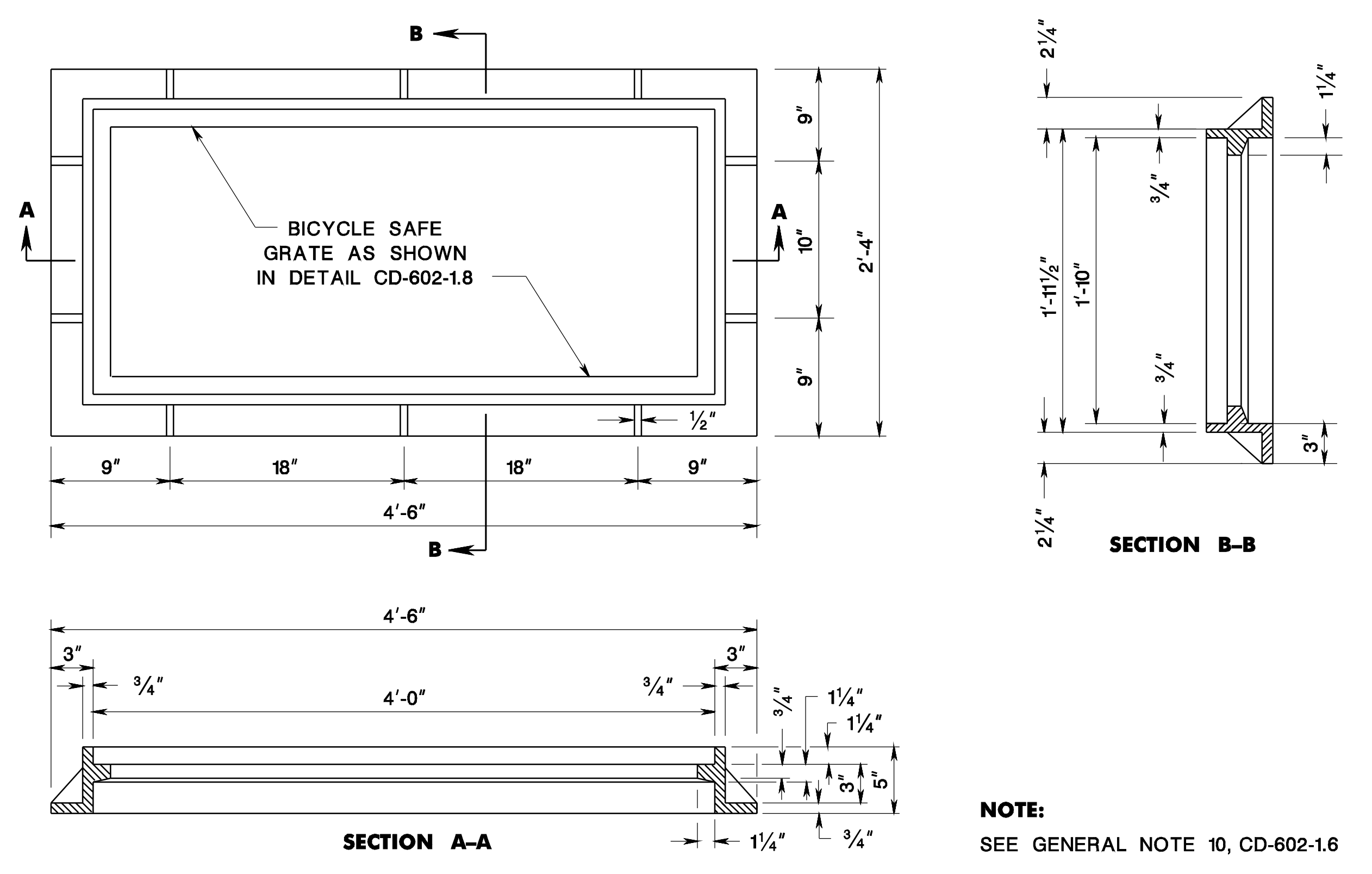
INLETS, TYPE B1 MODIFIED AND TYPE B2 MODIFIED

CD-602-3.2



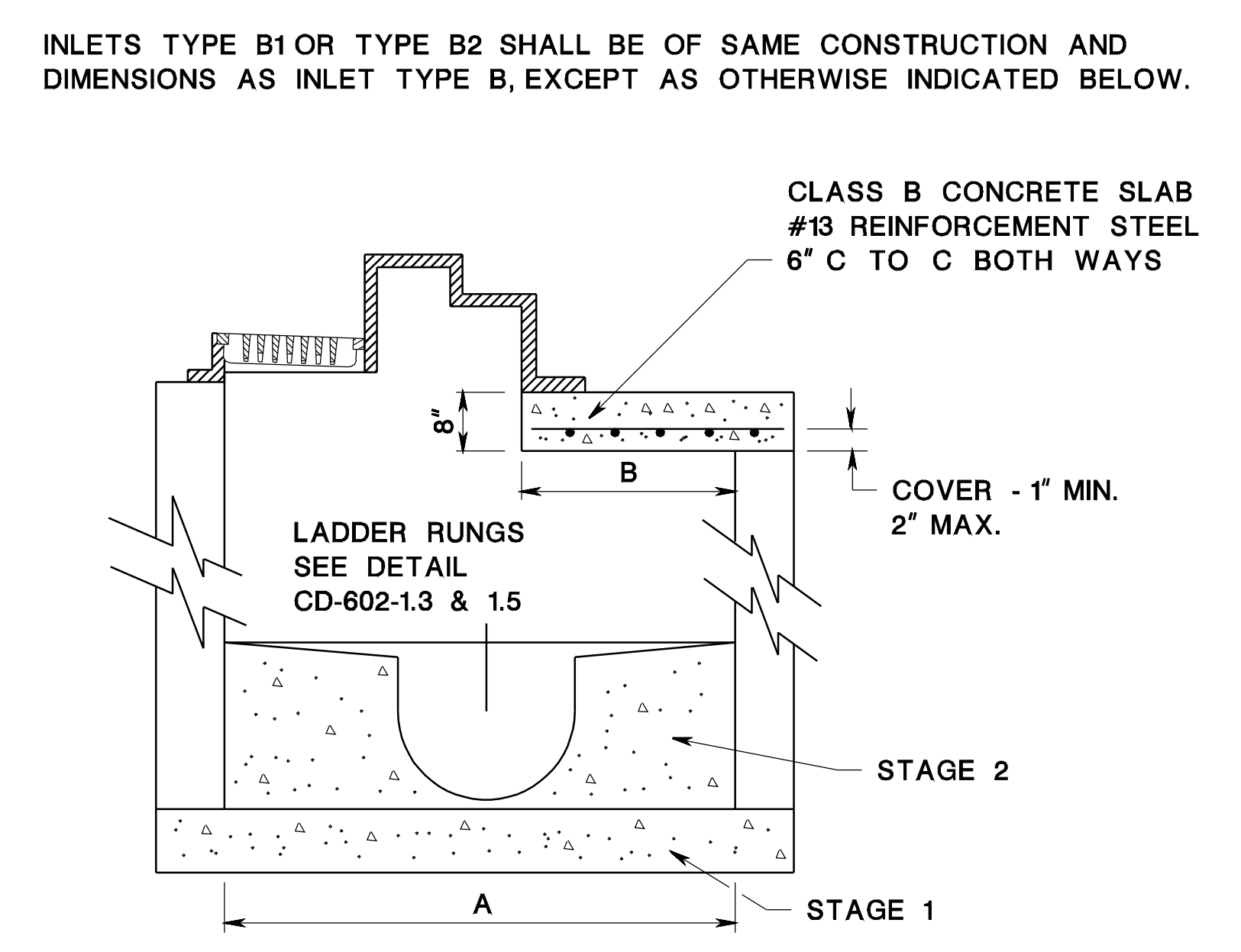
METHOD OF DEPRESSING INLETS AT SHOULDERS

CD-602-3.3



FRAME TO BE USED FOR INLET, TYPE B MODIFIED

CD-602-3.4



INLETS, TYPE B1 AND TYPE B2

CD-602-3.5

REINFORCEMENT STEEL IS IN METRIC UNITS.

INLETS, TYPE B1, B2, & B, B1, & B2 MODIFIED
 N.T.S.

CD-602-3

NEW JERSEY DEPARTMENT OF TRANSPORTATION

CONSTRUCTION DETAILS