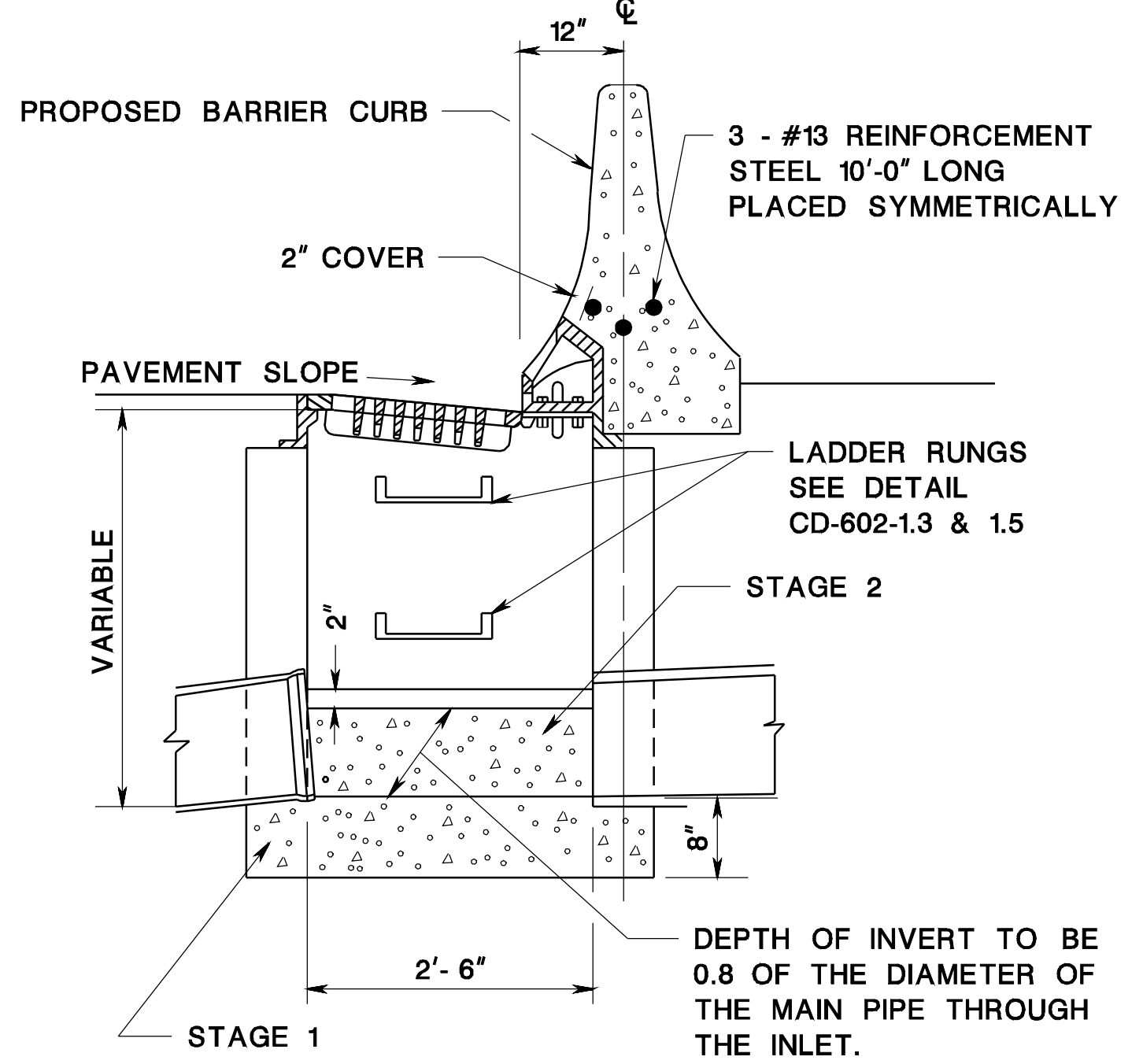
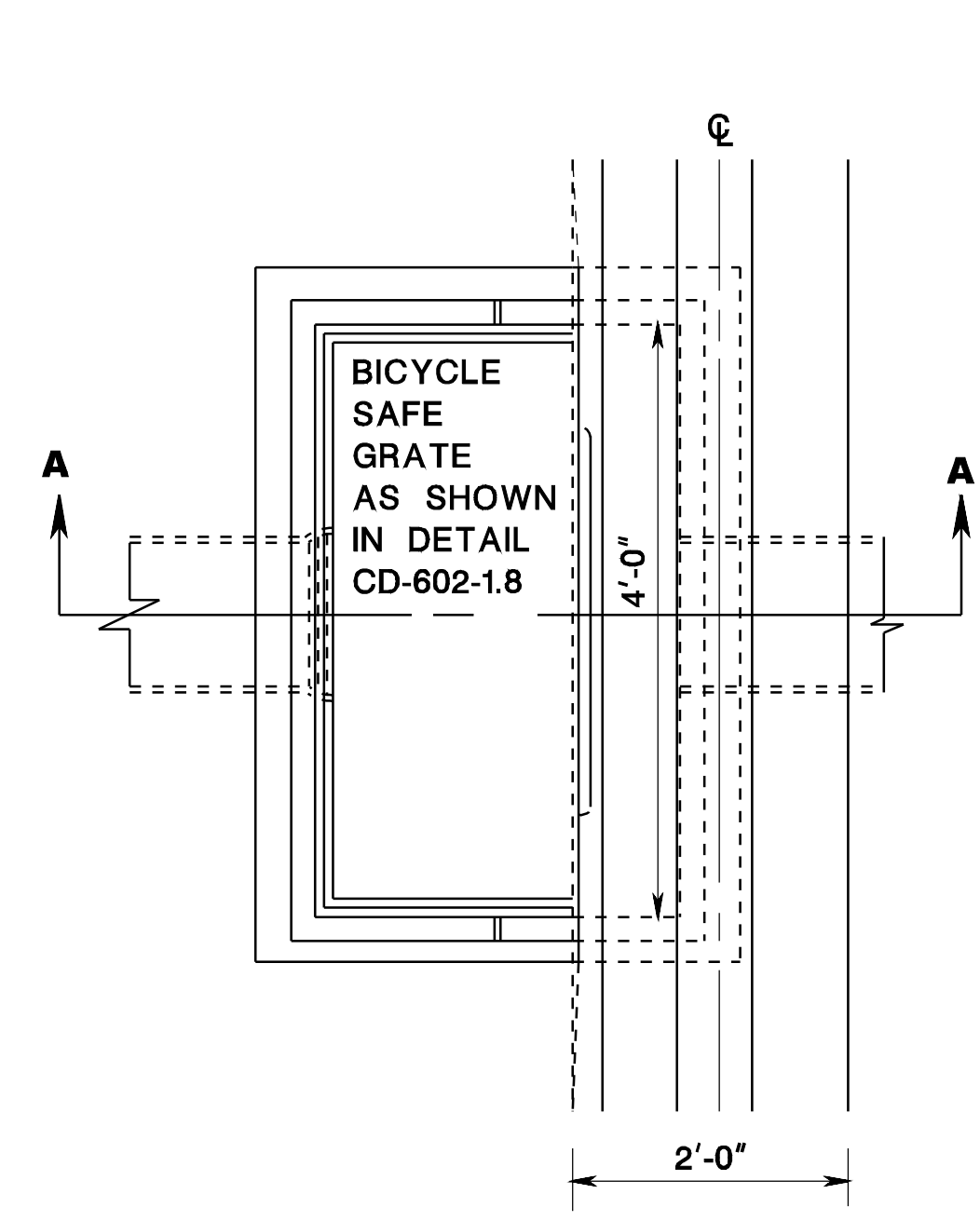


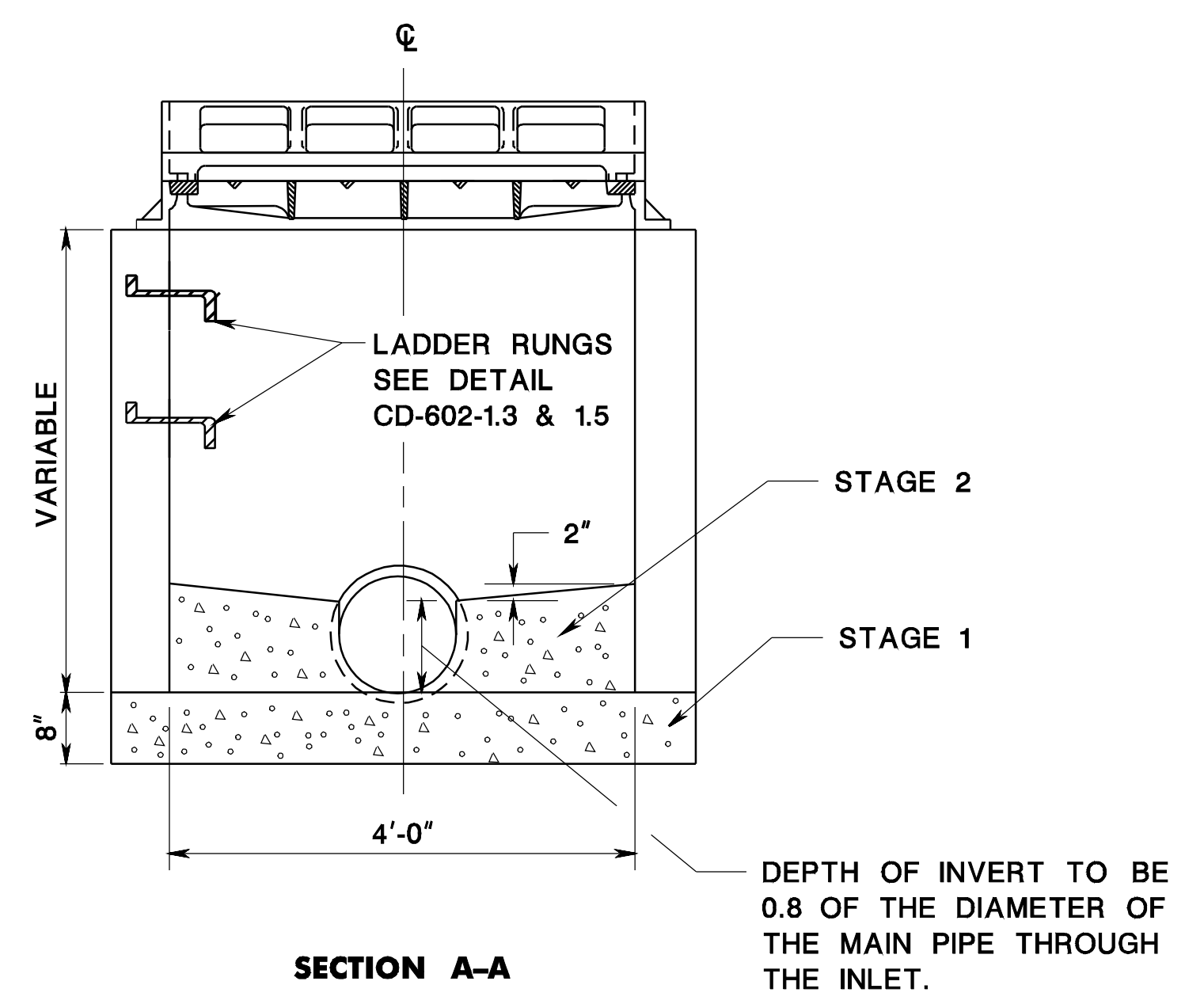
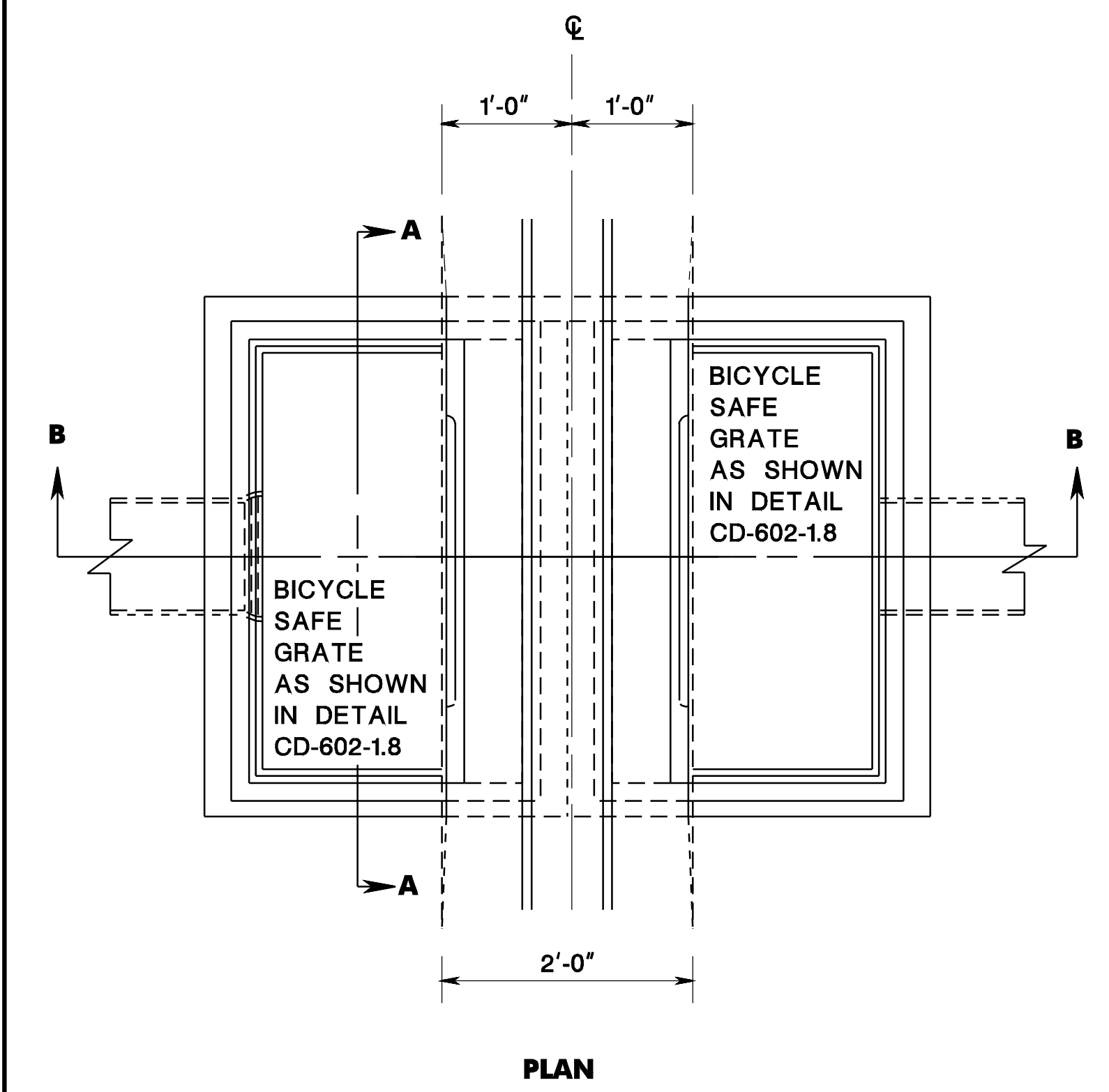
pen table= \\n\jdotprjws\vsystem\jdotprjws\Projects\NJDOTEng\Plot\TBLs\Roadway\basic.tbl  
 scale=30.00000001.0000000  
 date=17-DEC-2007 09:43  
 ID=TPXBHAY  
 BDC07D50-ORIGINAL SHEET



**NOTE:**  
 FOUNDATION AND INVERT TO BE CONSTRUCTED IN 2 STAGES  
 THE TOP SURFACE OF STAGE 1 TO BE LEFT ROUGH.

**INLET, TYPE D1**

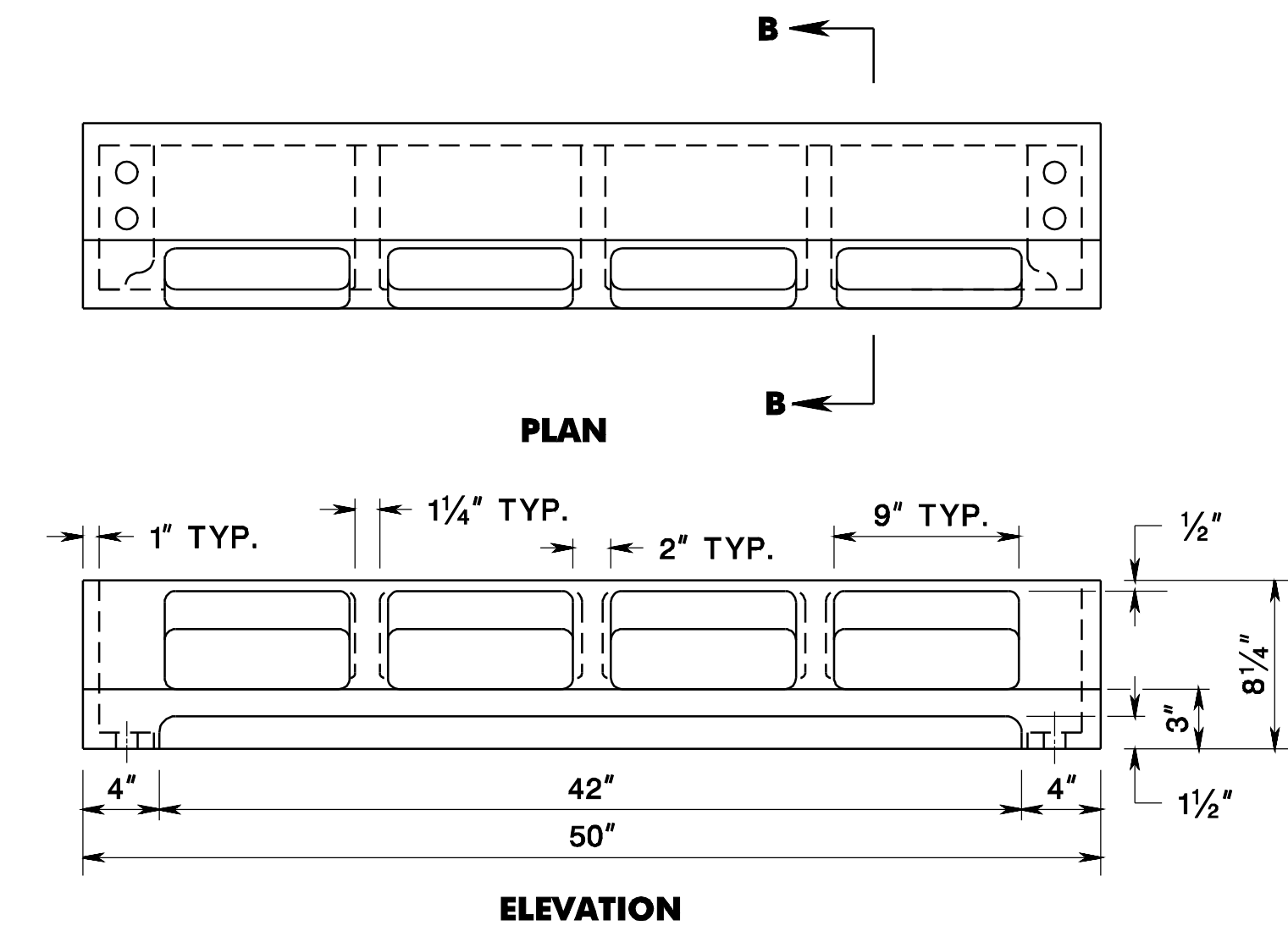
CD-602-5.1



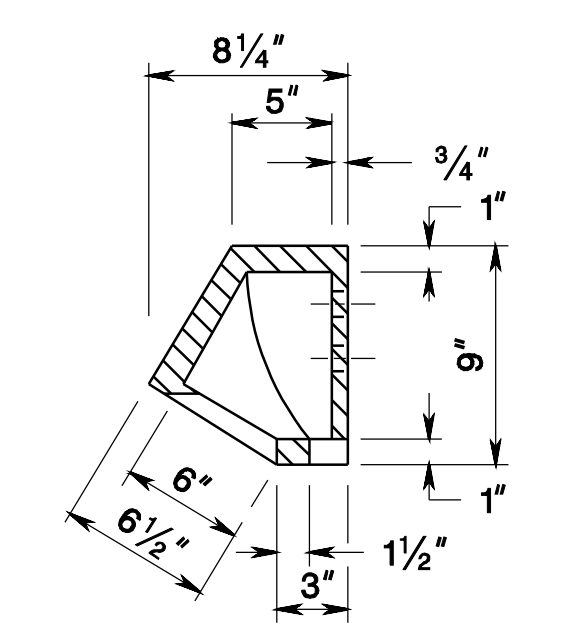
**NOTE:**  
 FOUNDATION AND INVERT TO BE CONSTRUCTED IN 2 STAGES  
 THE TOP SURFACE OF STAGE 1 TO BE LEFT ROUGH.

**INLET, TYPE D2**

CD-602-5.2

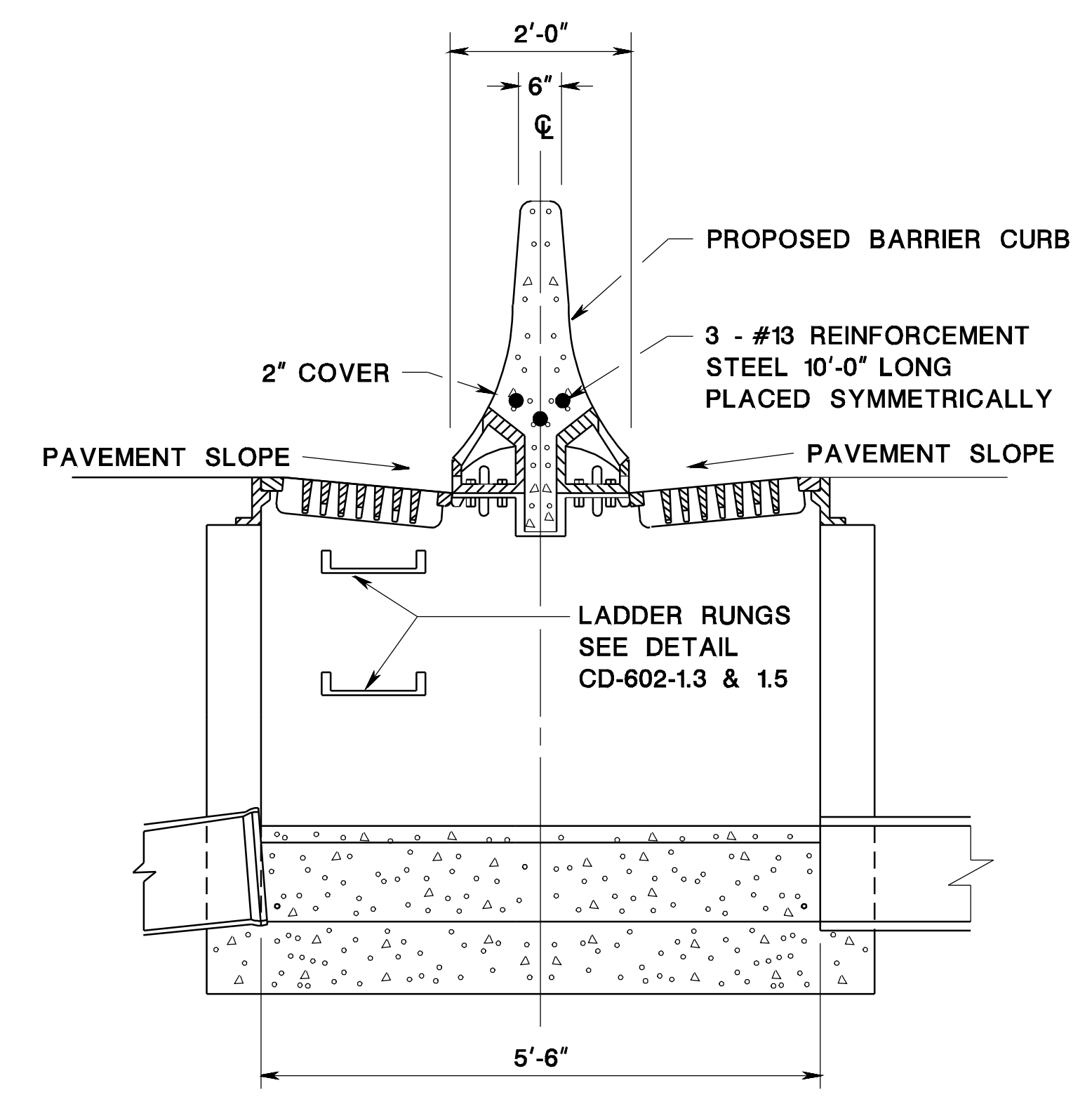


**CAST IRON CURB PIECE FOR INLETS, TYPE D1 AND D2**



**NOTE:**  
 SEE GENERAL NOTE 10, CD-602-1.6

CD-602-5.3



REINFORCEMENT STEEL IS IN METRIC UNITS.

**INLETS, TYPE D1 & D2**  
 N.T.S.

CD-602-5

NEW JERSEY DEPARTMENT OF TRANSPORTATION

**CONSTRUCTION DETAILS**