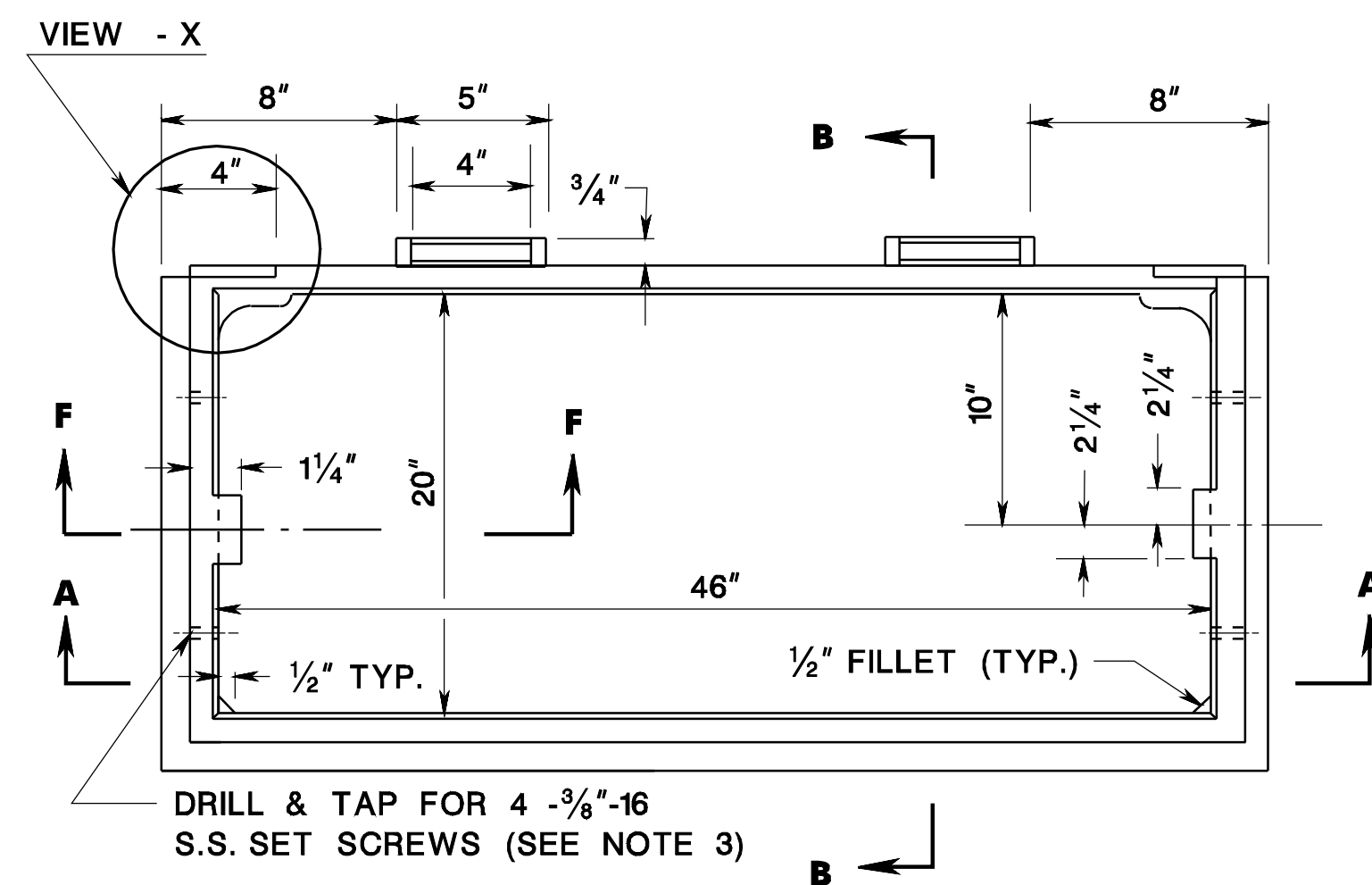
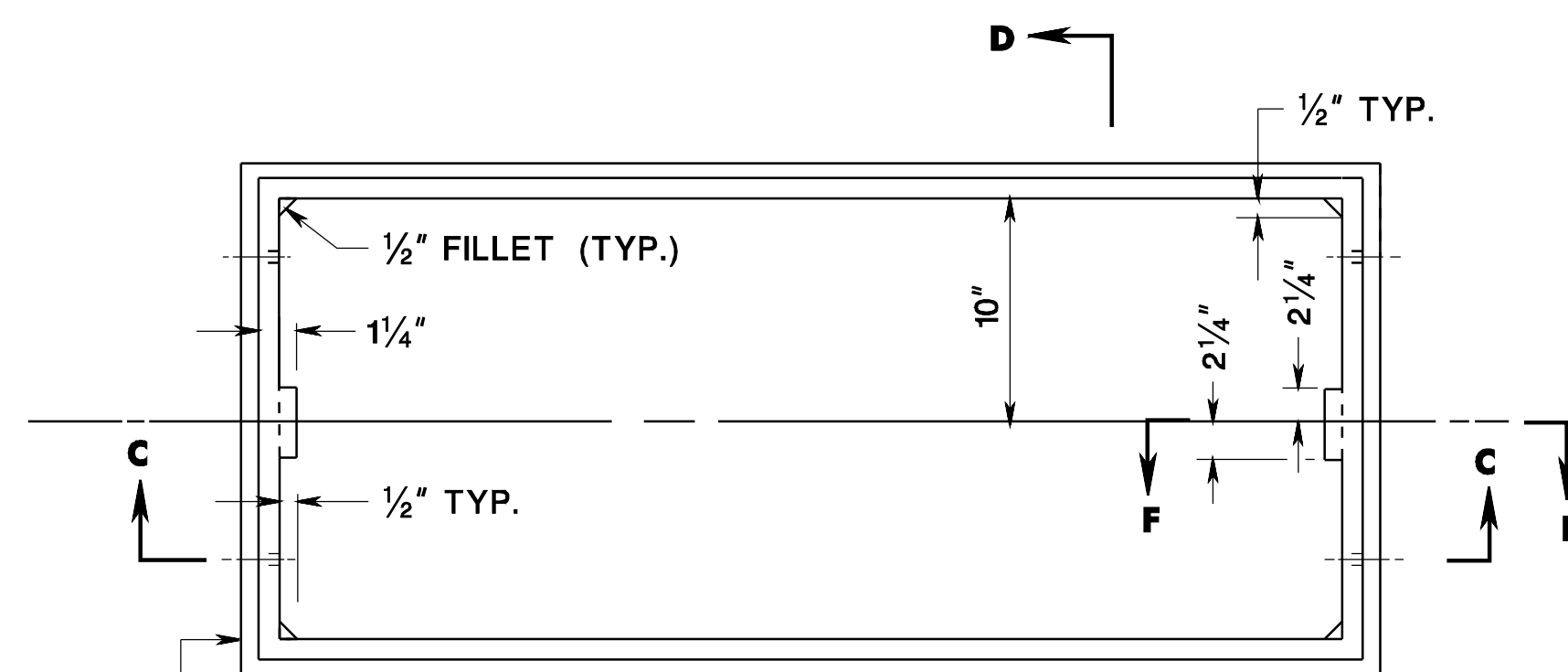


pen table= \\njdotprjws\vsystem\NJDOT\Projects\NJDOTEng\Plot\TBLS\Roadway\basic.tbl  
 scale=30.000000;1.000000  
 date=17-DEC-2007 09:43  
 ID=TPXBHAY  
 BDC0703-ORIGINAL SHEET



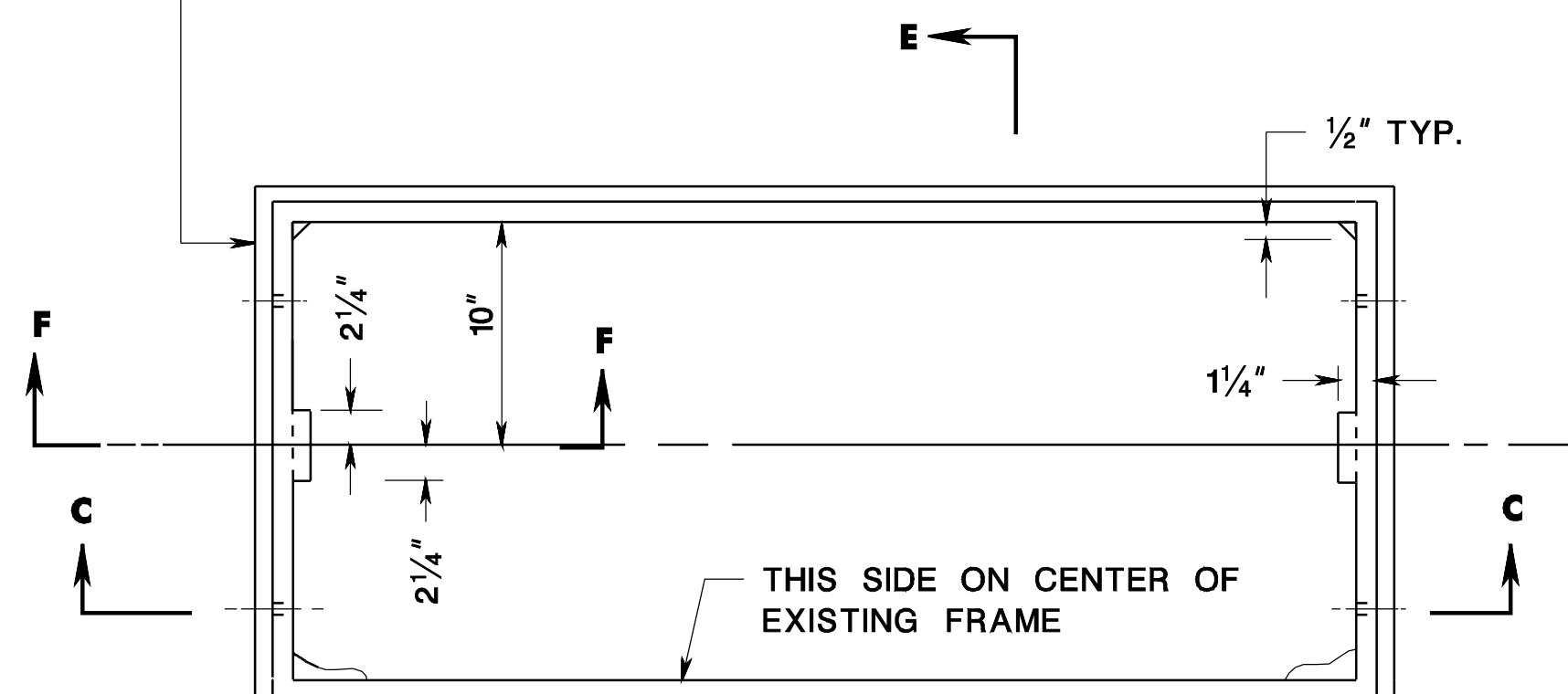
DRILL & TAP FOR 4 - 3/8"-16 S.S. SET SCREWS (SEE NOTE 3)

**EXTENSION FRAMES FOR INLETS, TYPE B & C AND INLETS, TYPE D1 & D2**

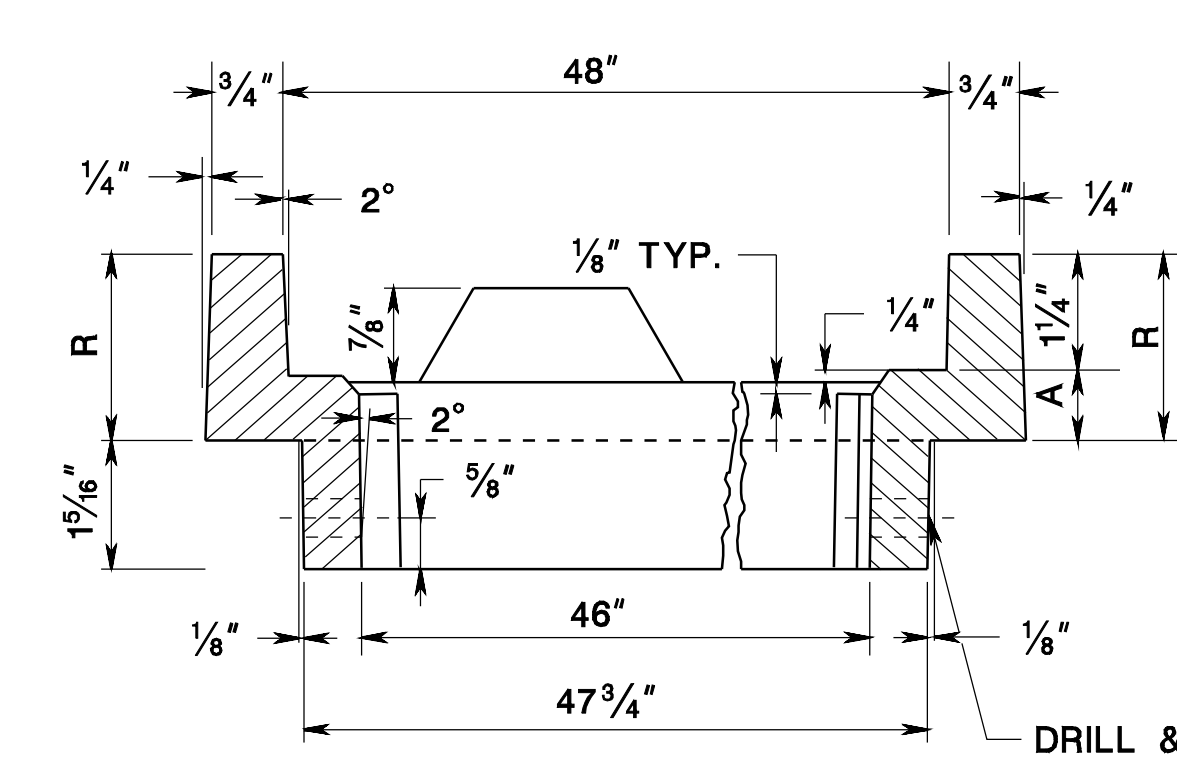


**EXTENSION FRAMES FOR INLETS, TYPE A AND B MODIFIED**

INLETS, TYPE E 1 EACH (2 UNITS)

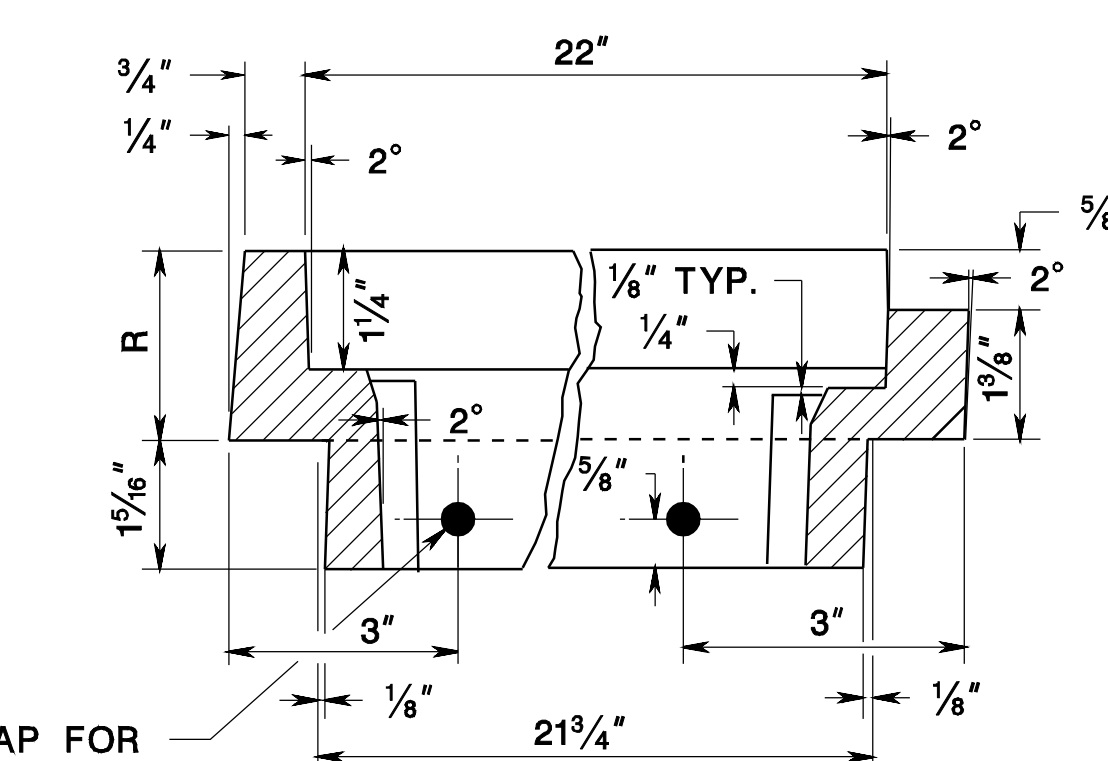


**EXTENSION FRAMES FOR INLET, TYPE E (HALF ONLY)**

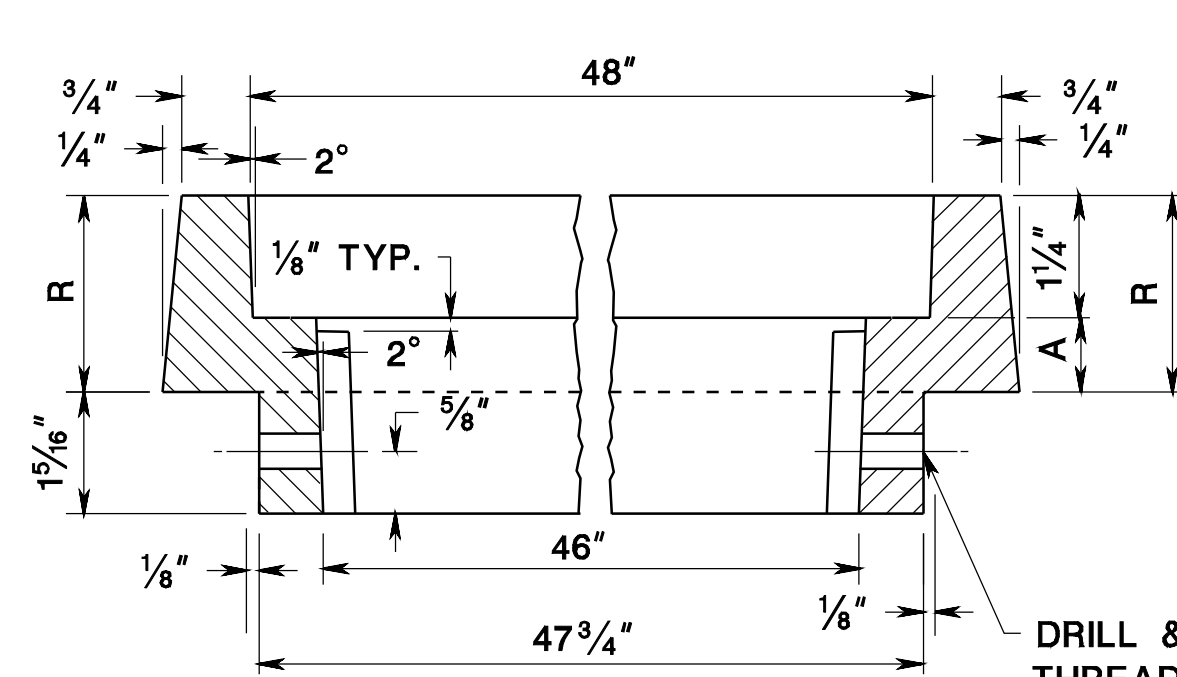


SECTION A-A

DRILL & TAP FOR THREADED HOLES, 3/8" - 16N.C. THREAD (FOR FUTURE USE) (SEE NOTE 3)

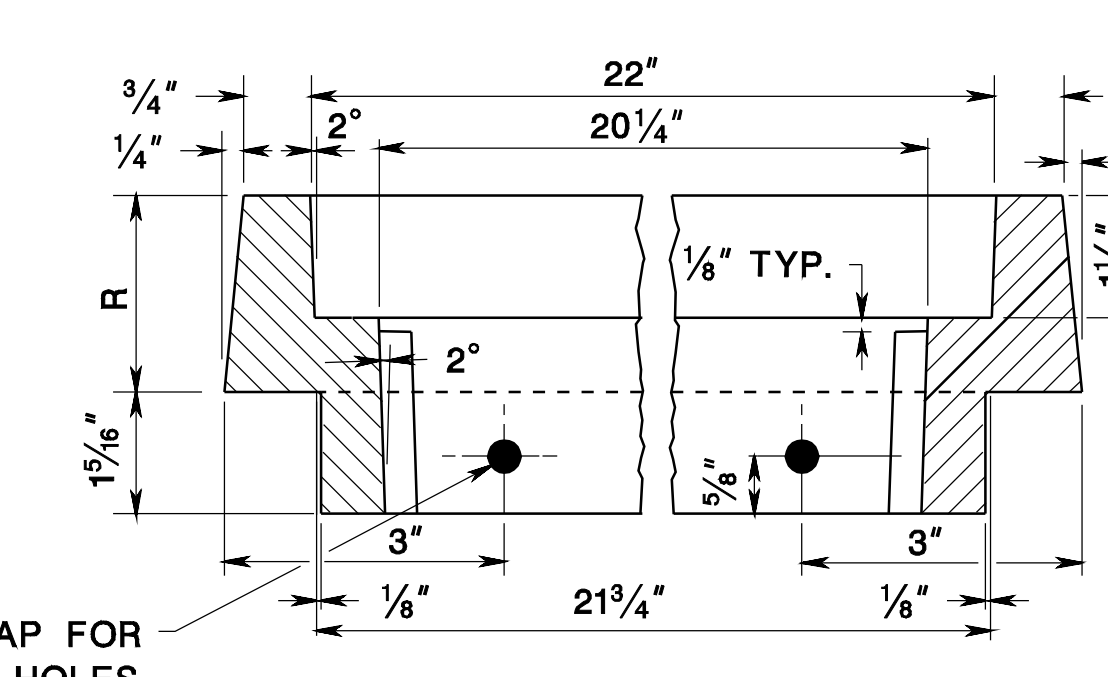


SECTION B-B

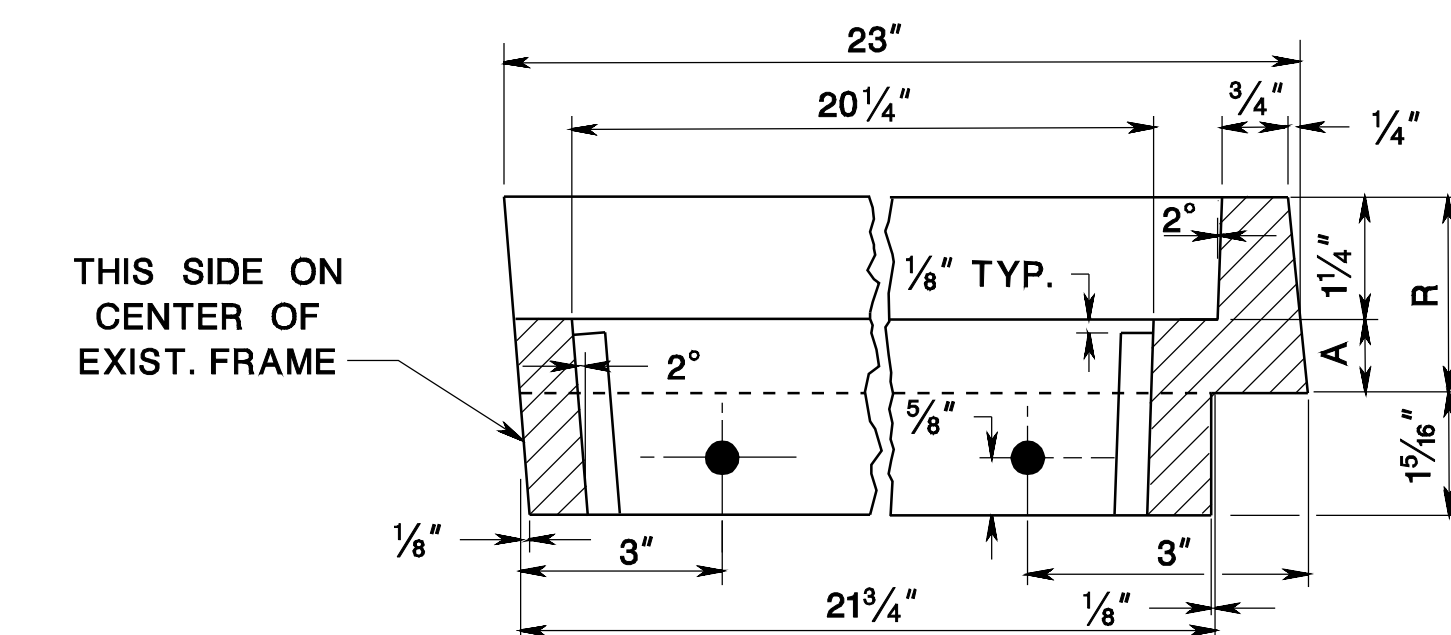


SECTION C-C

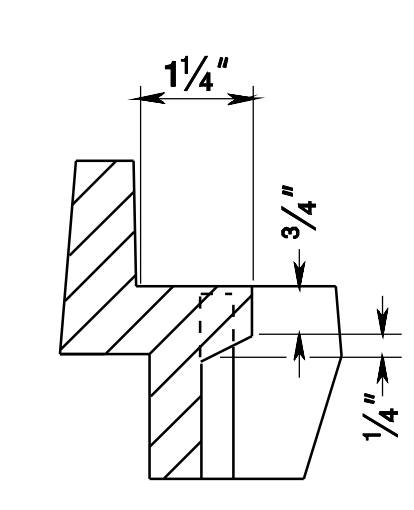
DRILL & TAP FOR THREADED HOLES, 3/8" - 16N.C. THREAD (FOR FUTURE USE) (SEE NOTE 3)



SECTION D-D

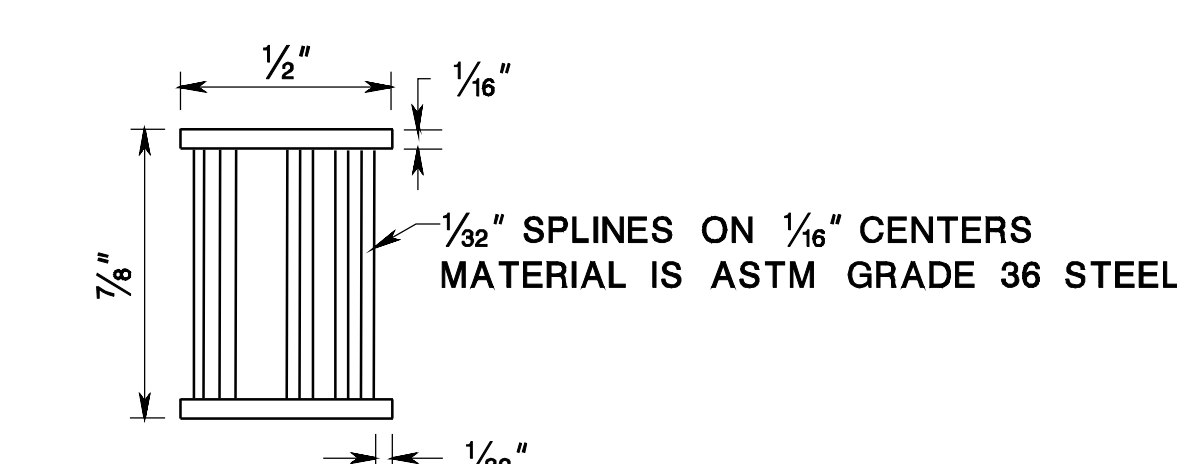


SECTION E-E



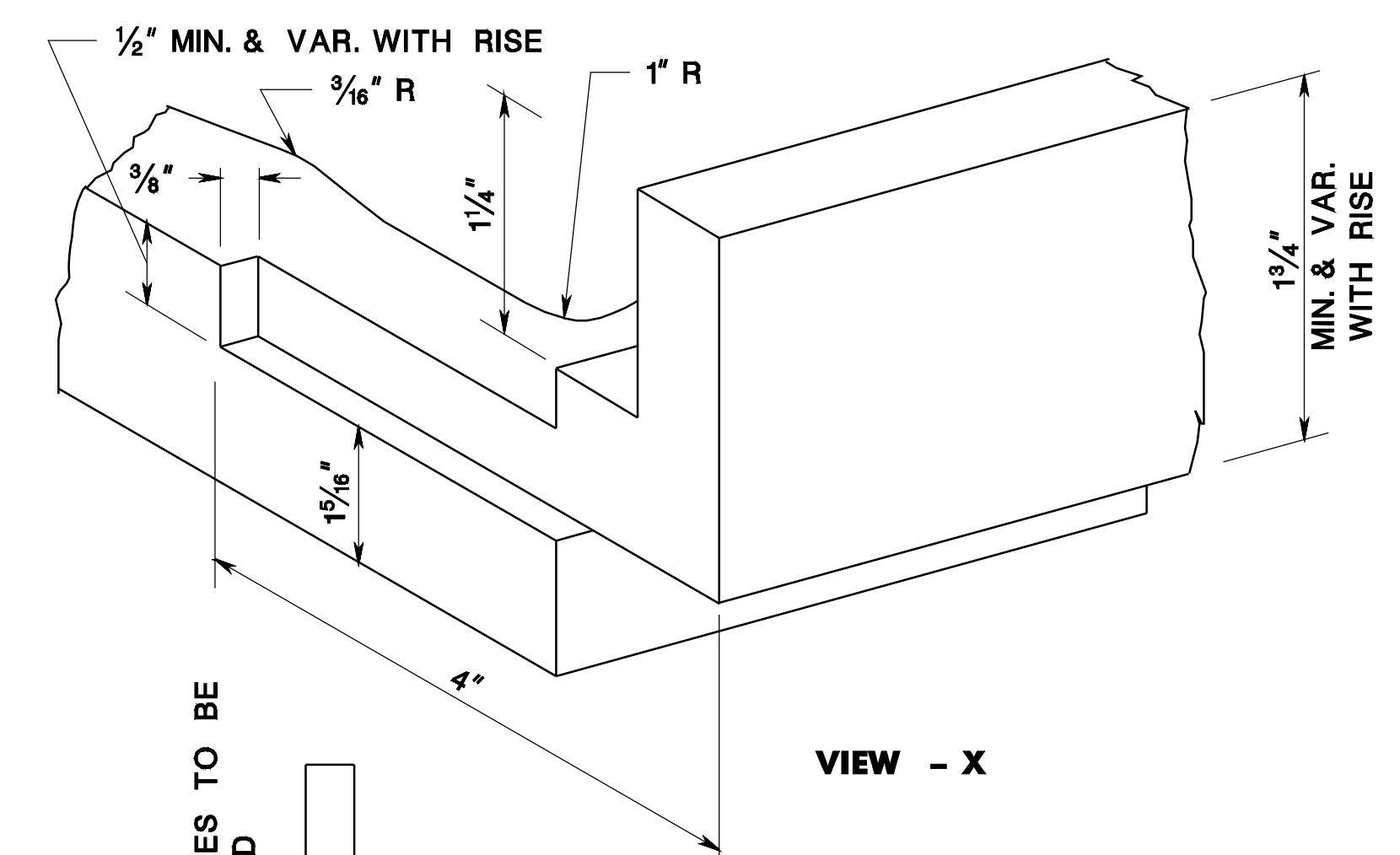
THIS LUG IS ONLY NECESSARY WHEN A BICYCLE SAFE-GRATE (CAST IRON) IS USED

SECTION F-F

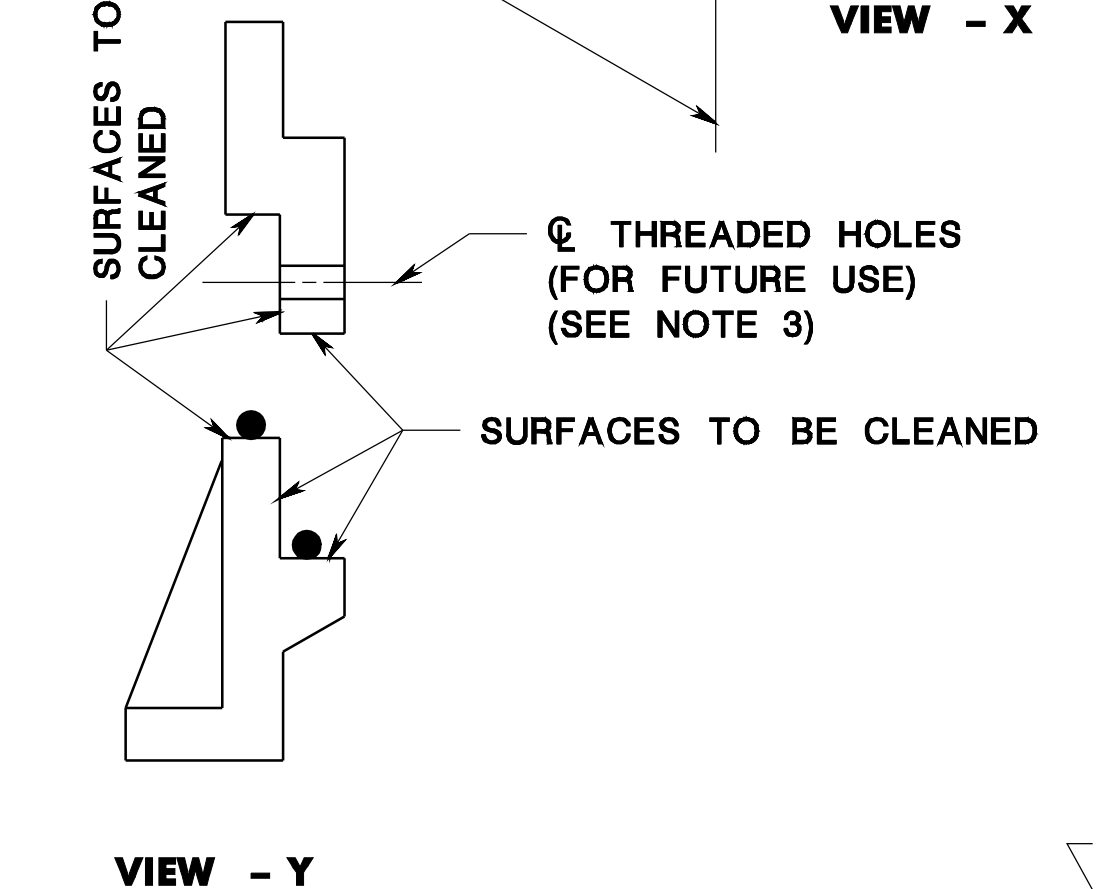


TAPPED FOR 3/8"-16 THREAD

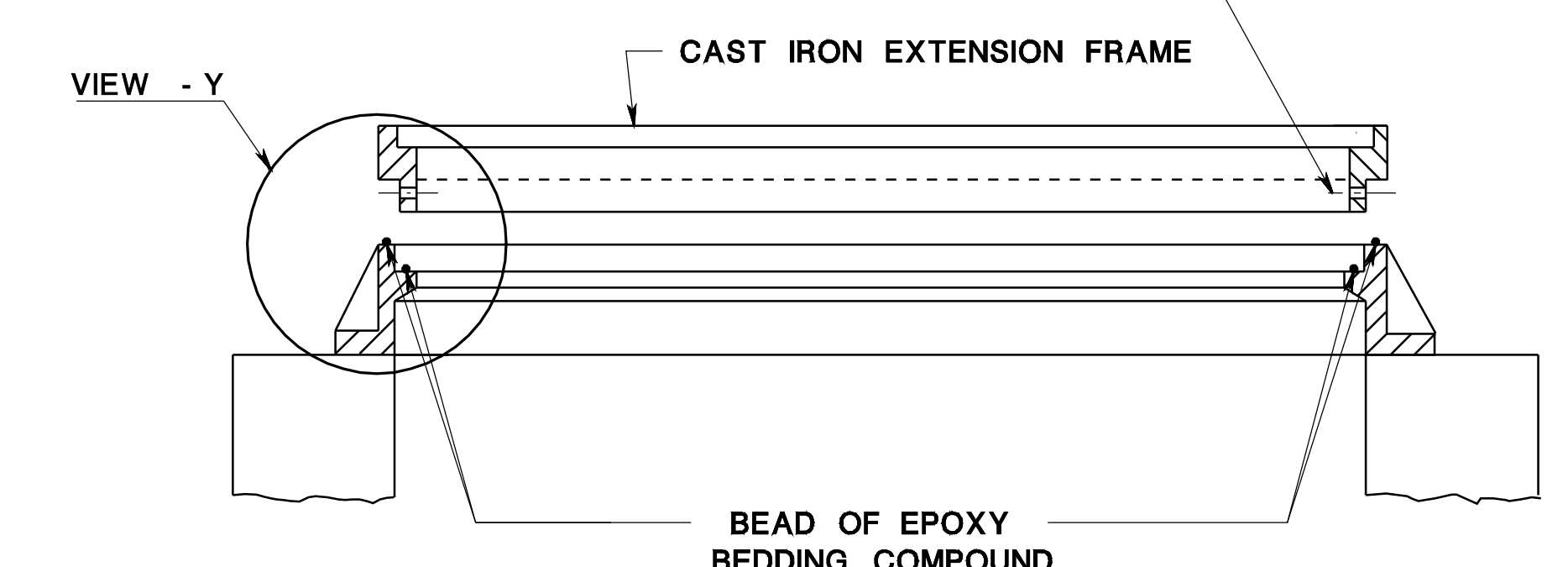
**THREADED INSERT FOR EXTENSION FRAMES ALTERNATE**



VIEW - X



VIEW - Y



**METHOD OF ATTACHING EXTENSION FRAMES**

**CAST IRON EXTENSION FRAMES FOR EXISTING INLETS**

N.T.S.

**NOTES:**

1. THE CONTRACTOR SHALL MEASURE THE EXISTING INLET FRAMES AND GRATES TO DETERMINE PROPER DIMENSIONS OF PROPOSED EXTENSION FRAMES BEFORE PLACING ORDER.
2. NOT TO BE USED WITH DISH GRATES.
3. A THREADED INSERT MAY BE USED AS AN ALTERNATE TO DRILLING AND TAPPING.
4. SEE GENERAL NOTE 10, CD-602-1.6

RISE=R	A
1 3/4"	1/2"
2"	3/4"
2 1/2"	1 1/4"
3"	1 3/4"
3 1/2"	2 1/4"

NEW JERSEY DEPARTMENT OF TRANSPORTATION

**CONSTRUCTION DETAILS**

CD-602-6.1

CD-602-6