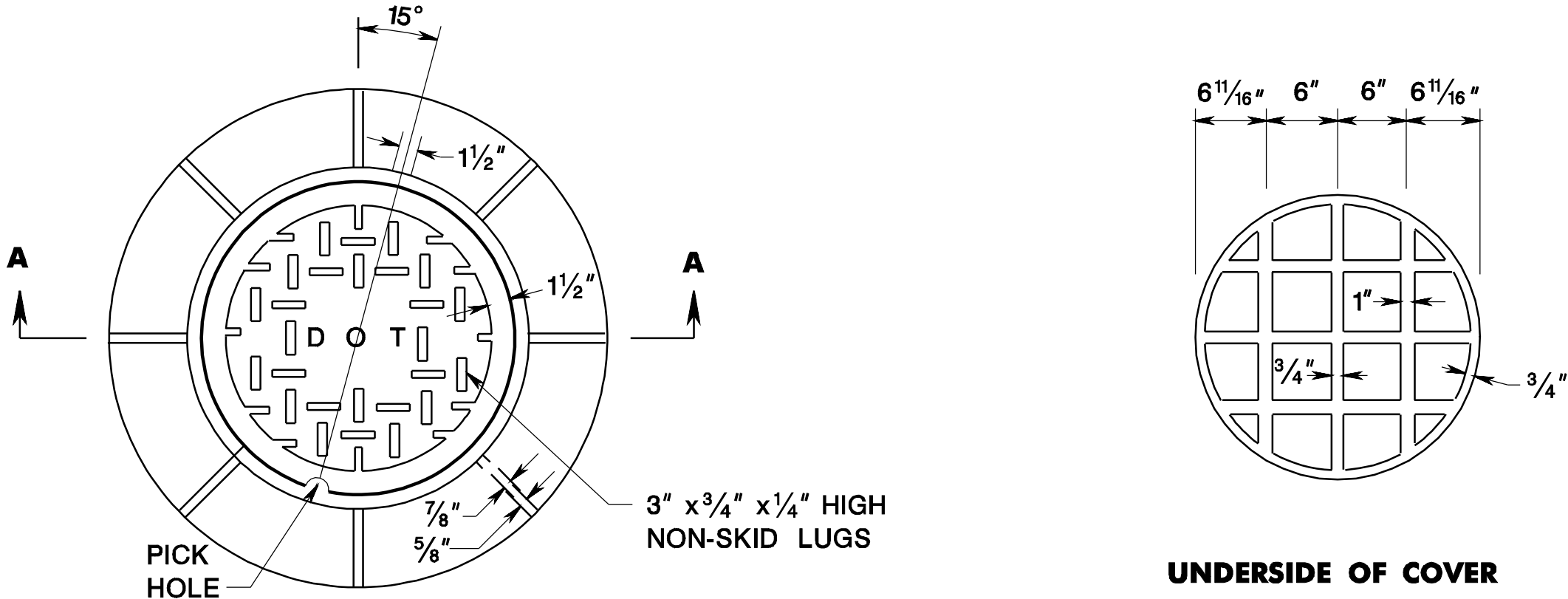
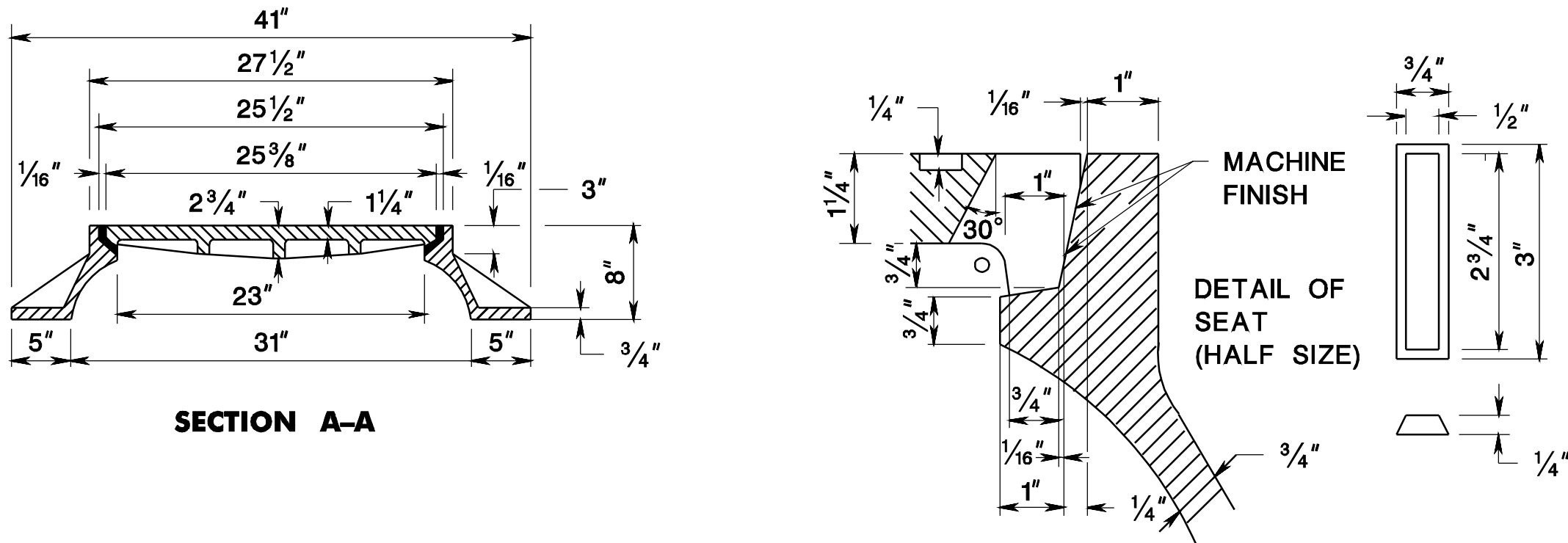


pen table= \\Njdotprjws\vsystem\NJDOTWS\Projects\NJDOTEug\Plot\TBLa\Roadway\basic.tbl  
scale= 30.0000000:1.0000000  
date= 17-DEC-2007 09:43  
ID= TPXBHAY



MINIMUM WEIGHTS  
WEIGHT OF FRAME = 265#  
WEIGHT OF COVER = 175#

**NOTE:**  
SEE GENERAL NOTE 10, CD-602-1.6



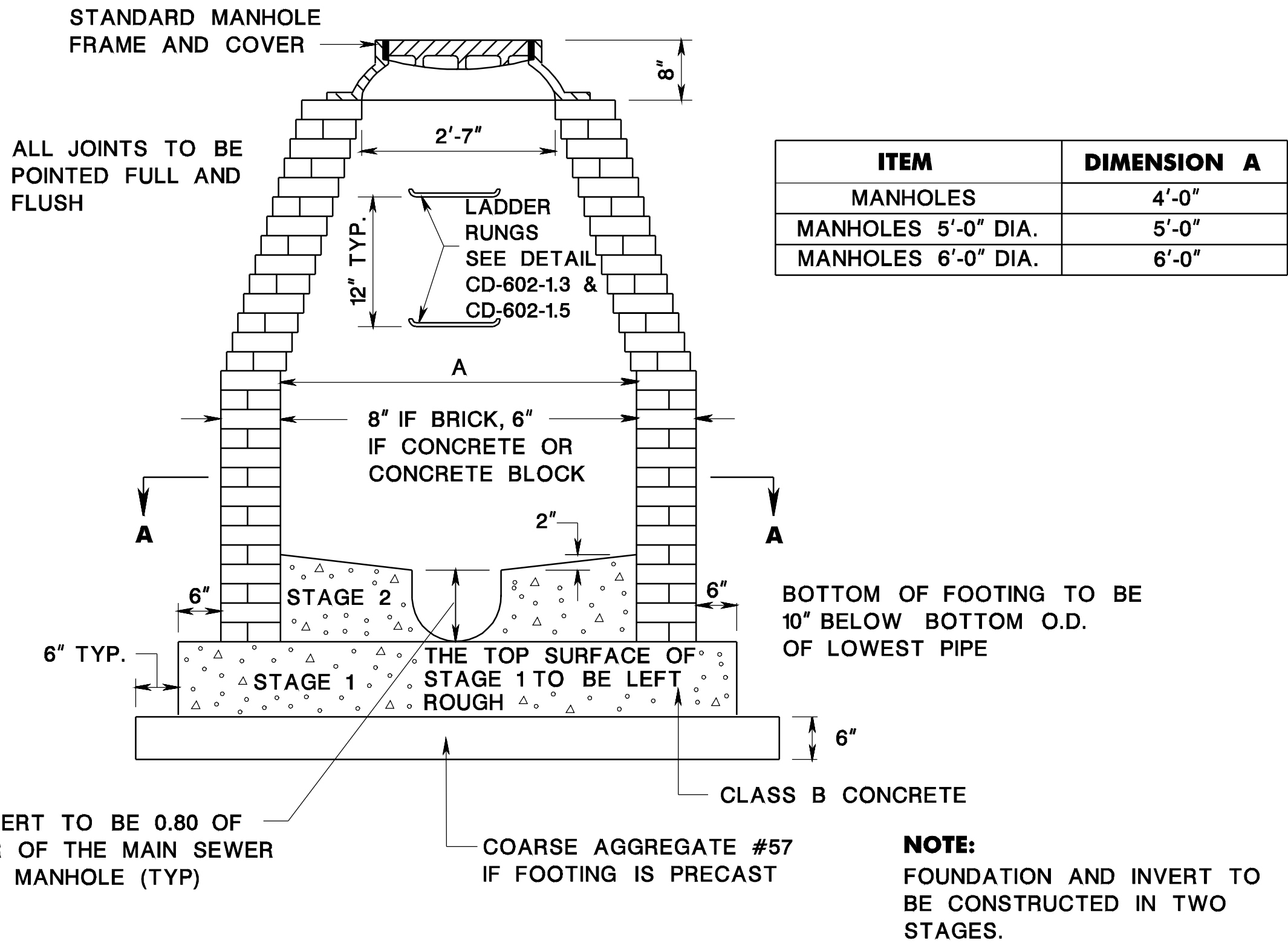
STANDARD MANHOLE FRAME AND COVER

CD-602-8.1

GENERAL NOTES

1. MANHOLES MAY BE CONSTRUCTED OF BRICK, CONCRETE, CONCRETE BLOCK, OR PRECAST CONCRETE.
2. WHEN THE DEPTH OF A MANHOLE EXCEEDS 10 FEET AS MEASURED FROM TOP OF COVER TO INVERT, THE WALLS OF BRICK, CONCRETE, OR CONCRETE BLOCK BELOW A DEPTH OF 8 FEET SHALL BE 12 INCHES THICK. THE OVERALL HORIZONTAL DIMENSIONS SHALL BE INCREASED 12 INCHES AND THE DEPTH OF THE FOUNDATION INCREASED TO 12 INCHES. WHEN ROCK IS ENCOUNTERED THE HORIZONTAL DIMENSION AND DEPTH OF THE FOUNDATION SHALL NOT BE INCREASED. THE THICKNESS OF PRECAST CONCRETE MANHOLE WALLS DOES NOT HAVE TO BE INCREASED IF THE DEPTH OF THE MANHOLE EXCEEDS 10 FEET.
3. CASTINGS OF PRECAST MANHOLES SHALL BE ADJUSTED TO GRADE WITH COURSES OF BRICK OR CONCRETE BLOCK, AS REQUIRED, 12 INCHES MAXIMUM.
4. AS AN ALTERNATE TO THE STANDARD MANHOLE FRAME AND COVER, A 39 INCH DIAMETER FRAME WITH 4 INCH FLANGE MAY BE FURNISHED WITH ALL OTHER DIMENSIONS AND WEIGHTS REMAINING THE SAME.
5. IN A BRICK, CONCRETE, OR CONCRETE BLOCK MANHOLE, THE INVERT SHALL BE CONSTRUCTED IN TWO STAGES.
6. AS AN ALTERNATIVE, COPOLMYER POLYPROPYLENE PLASTIC LADDER RUNGS MY BE FURNISHED IN PRECAST MANHOLES AND INLETS.

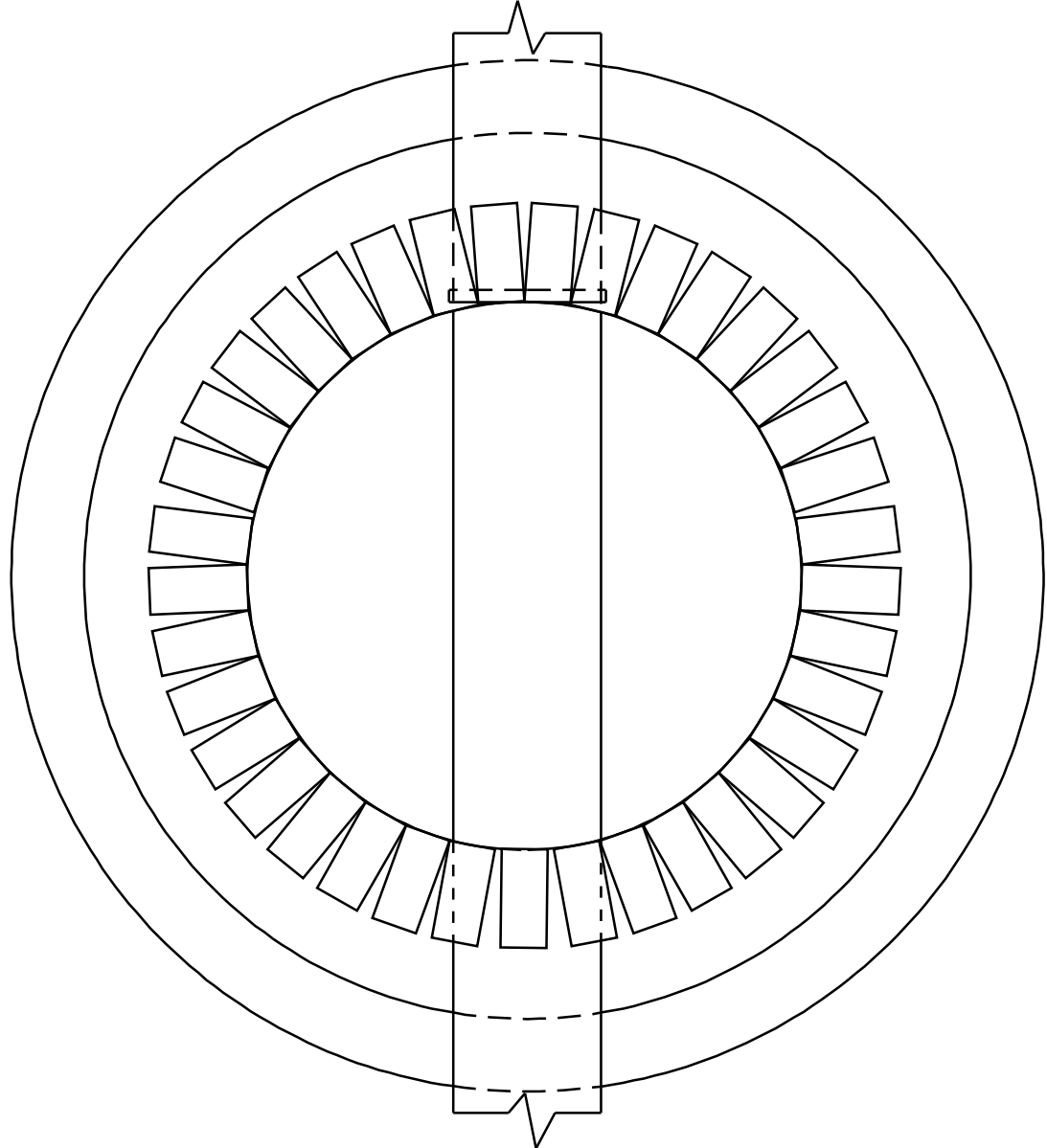
CD-602-8.3



ITEM	DIMENSION A
MANHOLES	4'-0"
MANHOLES 5'-0" DIA.	5'-0"
MANHOLES 6'-0" DIA.	6'-0"

**NOTE:**  
DEPTH OF INVERT TO BE 0.80 OF THE DIAMETER OF THE MAIN SEWER THROUGH THE MANHOLE (TYP)

**NOTE:**  
FOUNDATION AND INVERT TO BE CONSTRUCTED IN TWO STAGES.



SECTION A-A

MANHOLES, MANHOLES 5 FOOT DIAMETER,  
MANHOLES 6 FOOT DIAMETER

CD-602-8.2

MANHOLES  
N.T.S.

CD-602-8

NEW JERSEY DEPARTMENT OF TRANSPORTATION

CONSTRUCTION DETAILS