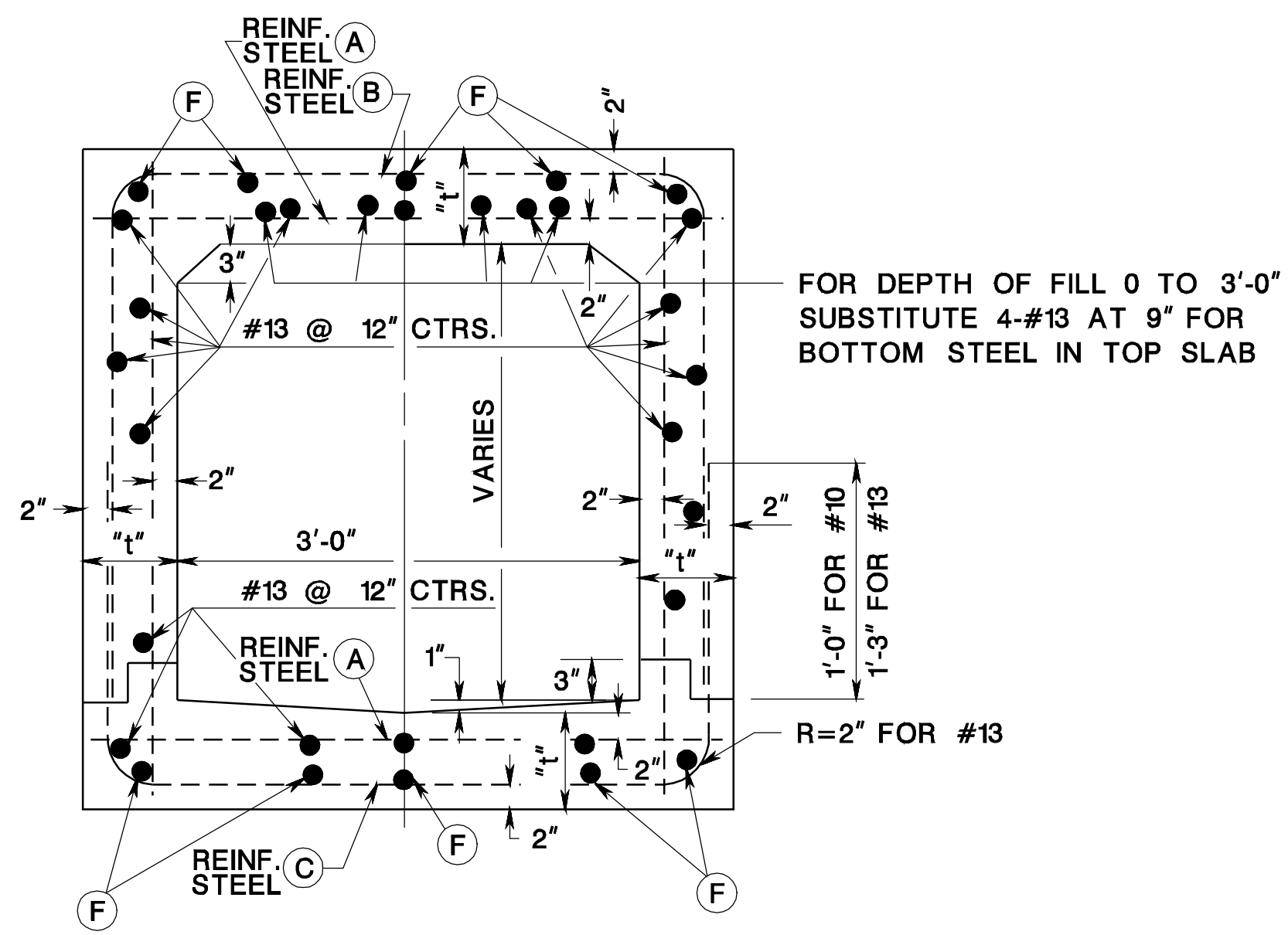
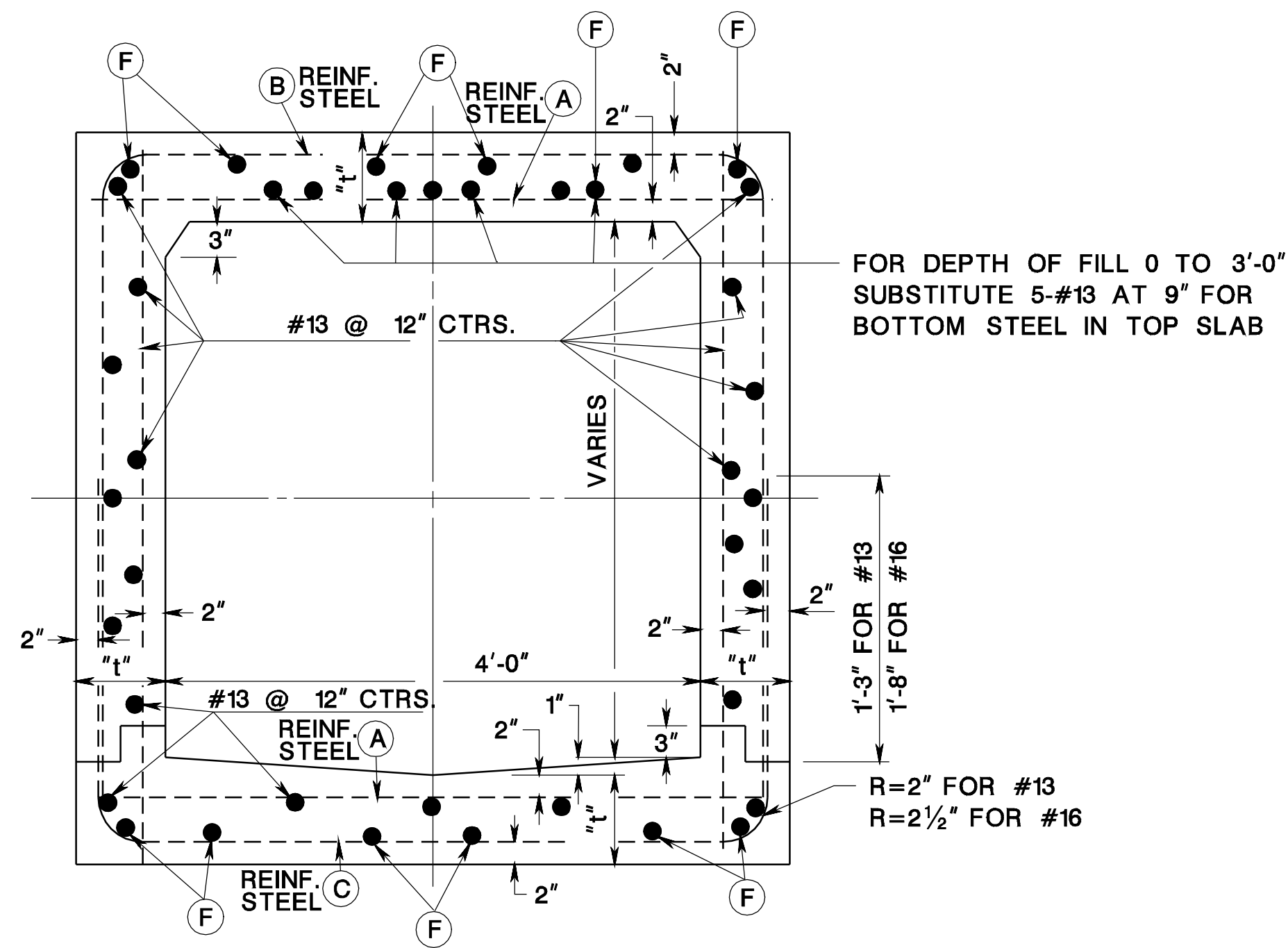


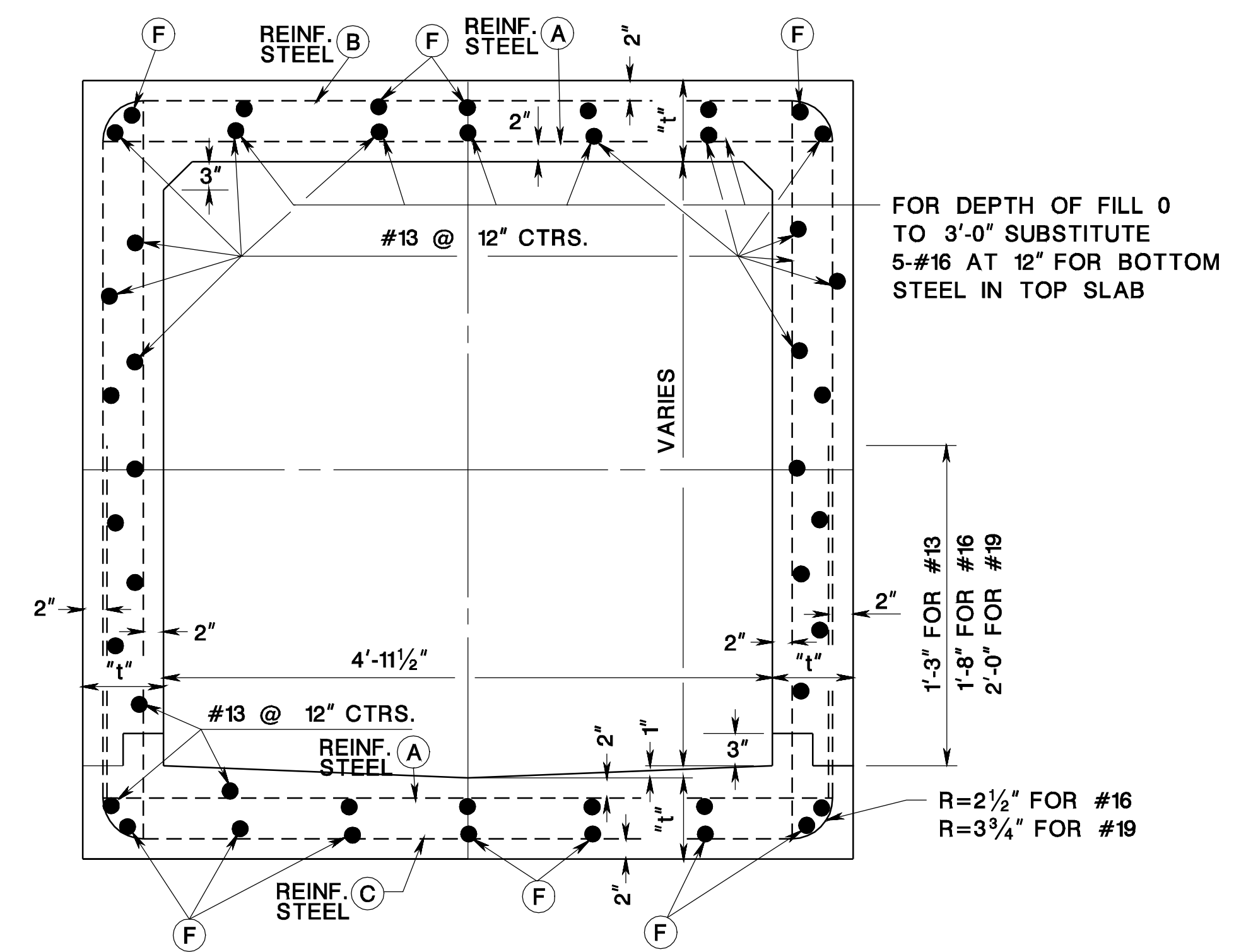
STANDARD 3'-0" CONCRETE CULVERT



STANDARD 4'-0" CONCRETE CULVERT



STANDARD 4' -11 1/2" CONCRETE CULVERT



DEPTH OF FILL	REINF. STEEL	SPAN 3 FT.		THICKNESS
		REINF. STEEL	SPACING	
0	A	#13	5"	8"
	B&C	#13	12"	
3'-1"	A	#13	12"	8"
	B&C	#13	12"	
10'-1"	A	#13	9"	8"
	B&C	#13	10"	
15'-1"	A	#13	7"	8"
	B&C	#13	9"	
20'-1"	A	#13	6"	8"
	B&C	#13	7"	

DEPTH OF FILL	REINF. STEEL	SPAN 4 FT.		THICKNESS
		REINF. STEEL	SPACING	
0	A	#13	4"	8"
	B&C	#13	10"	
3'-1"	A	#13	9"	8"
	B&C	#13	12"	
10'-1"	A	#13	6"	8"
	B&C	#13	9"	
15'-1"	A	#16	7"	8"
	B&C	#16	10"	
20'-1"	A	#16	6"	9"
	B&C	#16	10"	

DEPTH OF FILL	REINF. STEEL	SPAN 4'-11 1/2"		THICKNESS
		REINF. STEEL	SPACING	
0	A	#16	5"	8"
	B&C	#16	12"	
3'-1"	A	#13	6"	8"
	B&C	#13	9"	
10'-1"	A	#16	7"	9"
	B&C	#16	12"	
15'-1"	A	#16	7"	10"
	B&C	#16	10"	
20'-1"	A	#16	5"	10"
	B&C	#16	8"	
25'-1"	A	#19	6"	11"
	B&C	#19	9"	

NOTES:
 TOP AND BOTTOM LAYER OF LONGITUDINAL REINFORCEMENT STEEL (F) TO BE SAME SIZE AS REINFORCEMENT STEEL A, B & C AND SPACED 12" CTRS.
 FOR BACKFILLING AND EMBANKMENT SEE NJDOT STANDARD SPECIFICATIONS.
 REINFORCEMENT STEEL SHALL CONFORM TO ASTM A615, GRADE 60.

VOLUME OF CONCRETE AND WEIGHT OF REINFORCEMENT PER LINEAR FOOT OF CULVERT

SIZE OF CULVERT OPENING IN FEET	3'-0" x 3'-0"					4'-0" x 3'-0"					4'-0" x 4'-0"					4' -11 1/2" x 3'-0"					4' -11 1/2" x 4'-0"					4' -11 1/2" x 5'-0"					
MAX DEPTH OF FILL FT.	3	10	15	20	25	3	10	15	20	25	3	10	15	20	25	3	10	15	20	25	3	10	15	20	25	3	10	15	20	25	40
VOLUME OF CONCRETE CU. YD. PER FT.	0.37	0.37	0.37	0.37	0.37	0.42	0.42	0.42	0.42	0.48	0.47	0.47	0.47	0.47	0.54	0.47	0.47	0.54	0.61	0.61	0.52	0.52	0.60	0.67	0.67	0.57	0.57	0.65	0.73	0.73	0.82
REINFORCEMENT LB. PER FT.	53	43	48	53	59	66	50	60	75	79	70	54	63	84	89	88	74	84	89	105	94	81	90	96	114	99	85	95	102	122	150

NOTE:
 FIRST DIMENSION OF CULVERT SIZE INDICATES THE SPAN.
 CULVERT TO BE CONSTRUCTED OF CLASS "A" CONCRETE.

REINFORCEMENT STEEL IS IN METRIC UNITS.

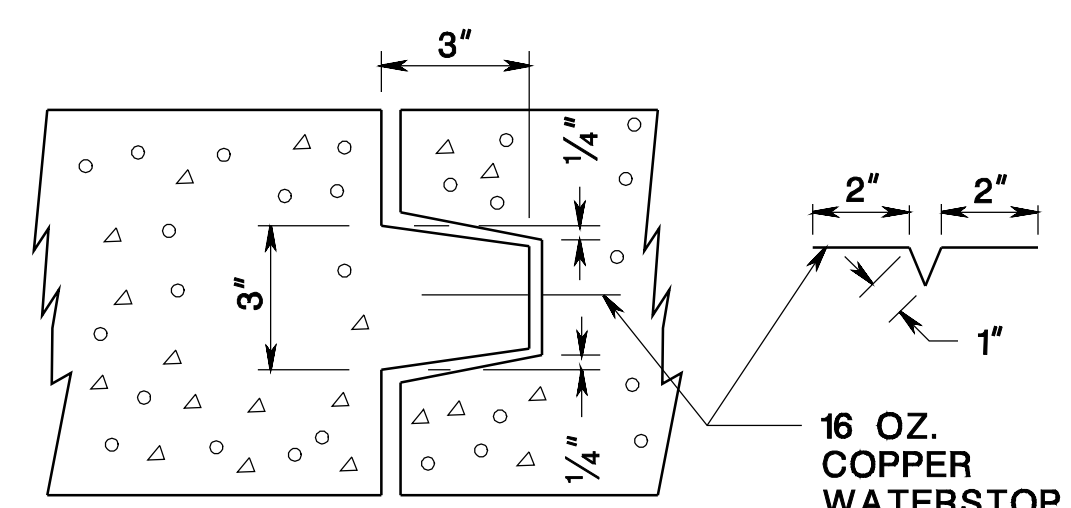
CONCRETE CULVERT
 N.T.S.

CD-602-11
 NEW JERSEY DEPARTMENT OF TRANSPORTATION

CONSTRUCTION DETAILS

SECTION THRU KEY OF CONSTRUCTION JOINT
 TO BE CONSTRUCTED IN TOP, WALLS AND BASE OF CULVERT NOT MORE THAN 35'-0" APART

CONSTRUCTION JOINT OF CULVERT



CD-602-11.2

CONCRETE CULVERT

CD-602-11.1

pen table= \\njdotprjw\vsystem\NJDOTWS\Projects\NJDOTEng\Plot\TBLs\Roadway\basic.tbl
 scale= 30.000000:1.000000
 date= 17-DEC-2007 09:44
 ID= TPXBHAV
 file=