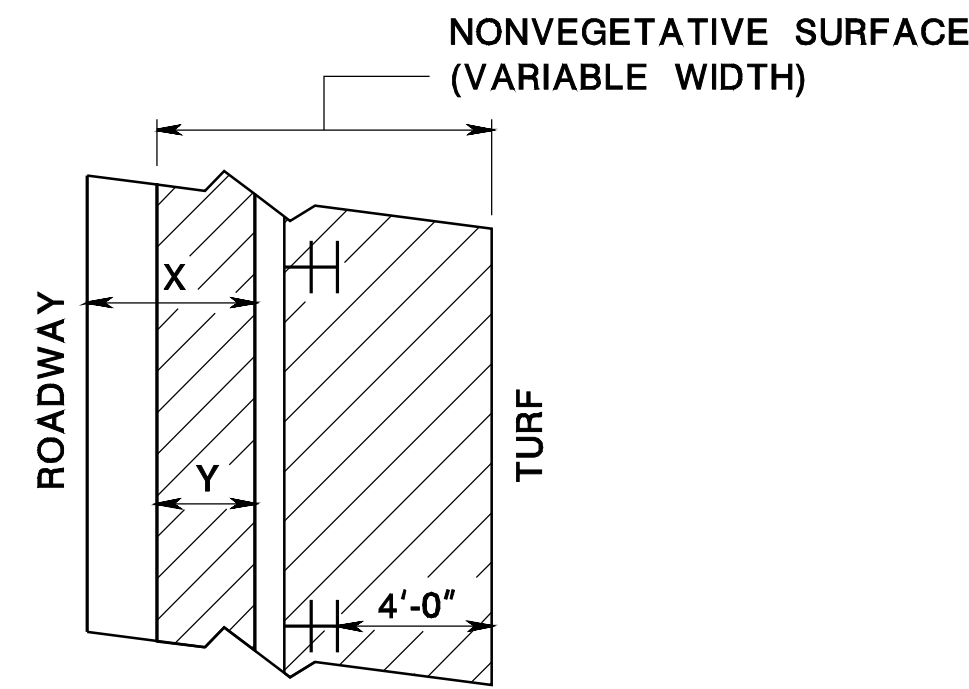
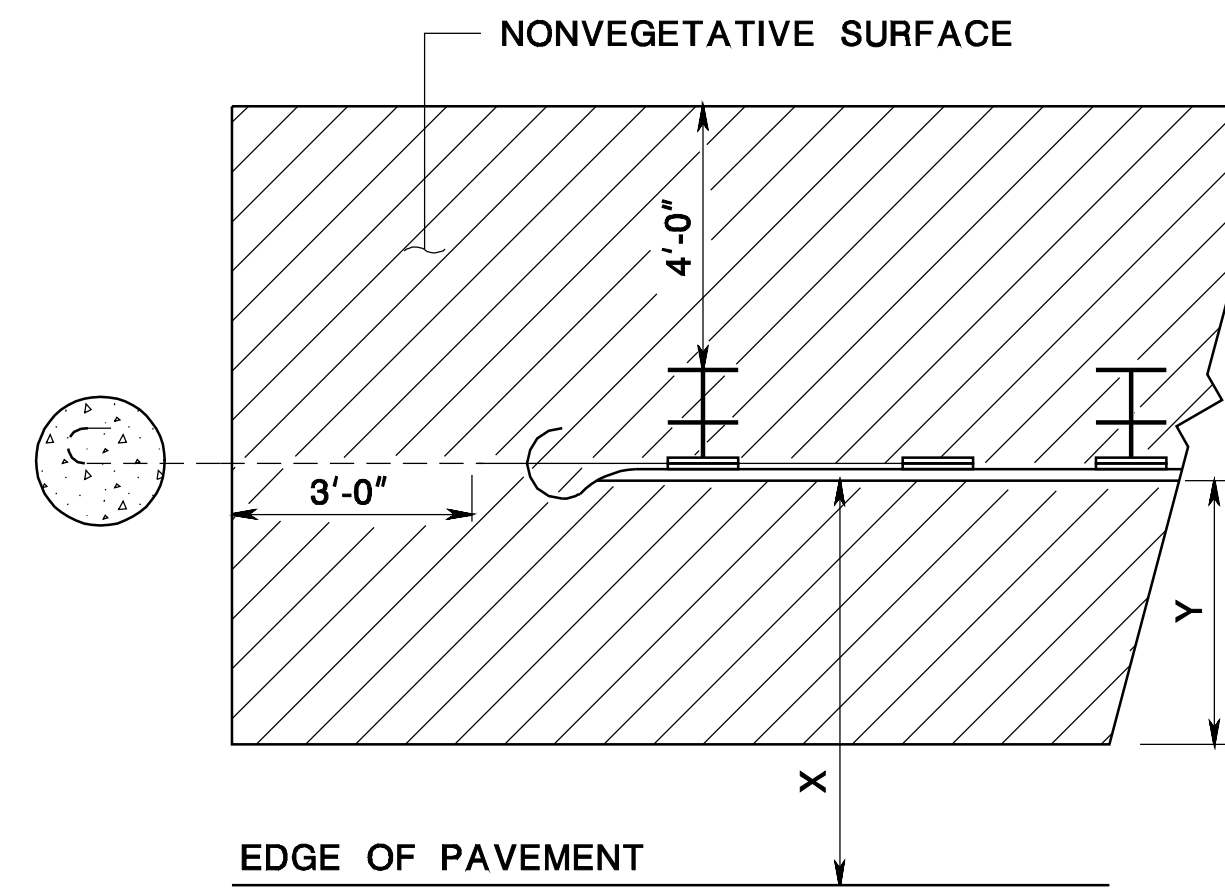


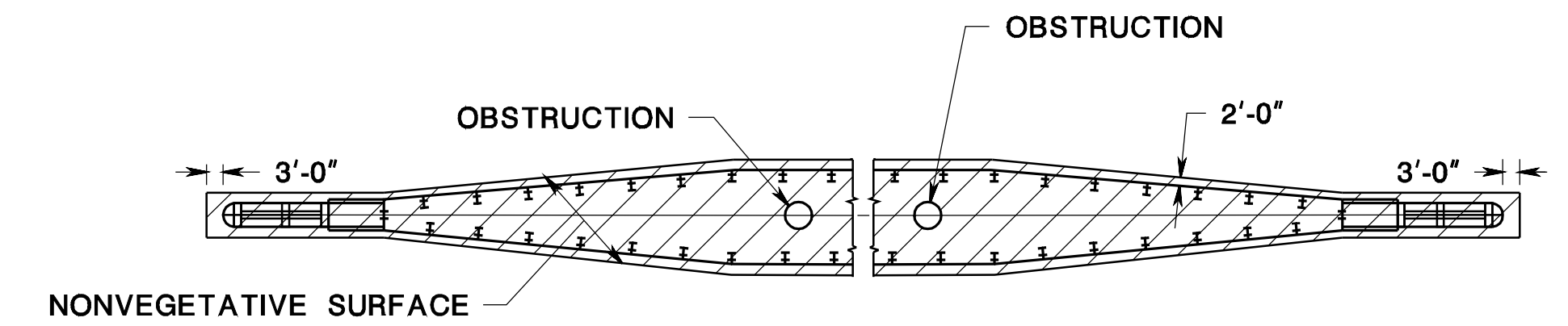
PLAN VIEW



PLAN VIEW



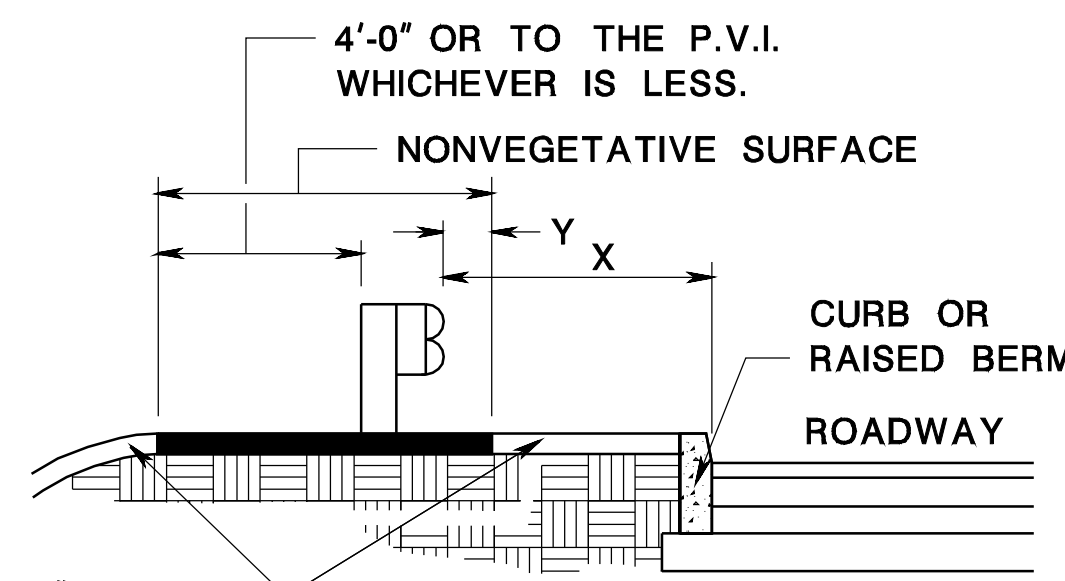
PLAN VIEW



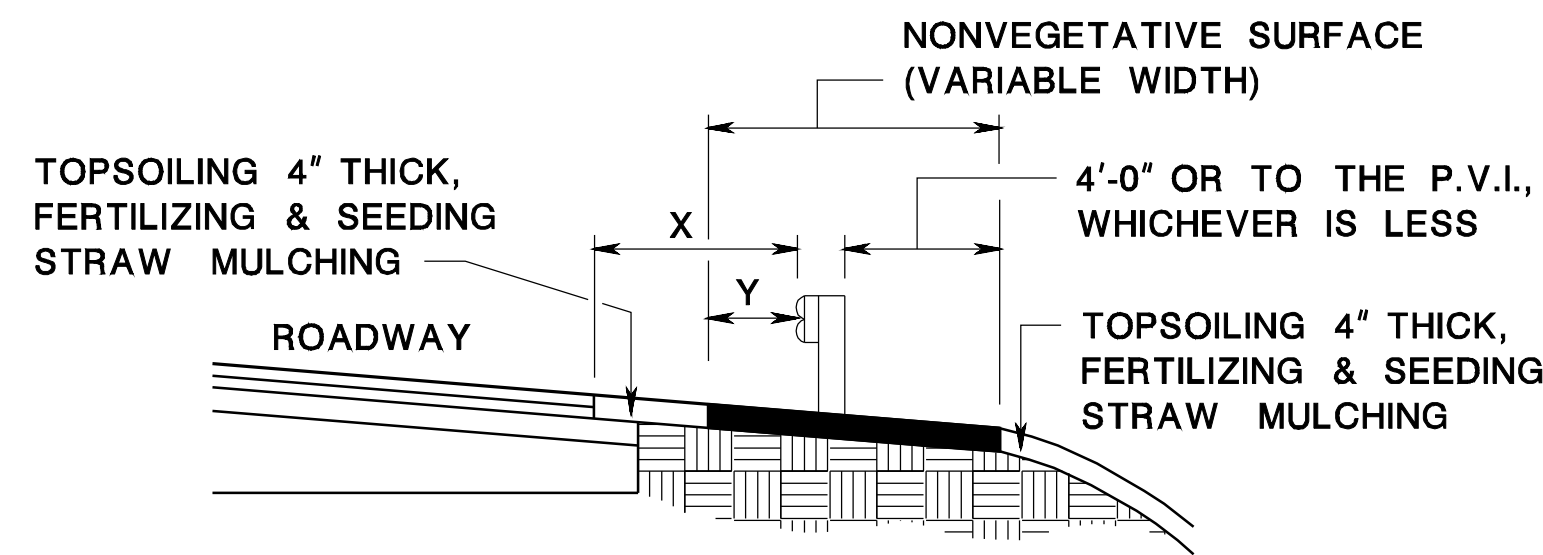
PLAN VIEW

**NONVEGETATIVE SURFACE AT MEDIAN GUIDE RAIL**

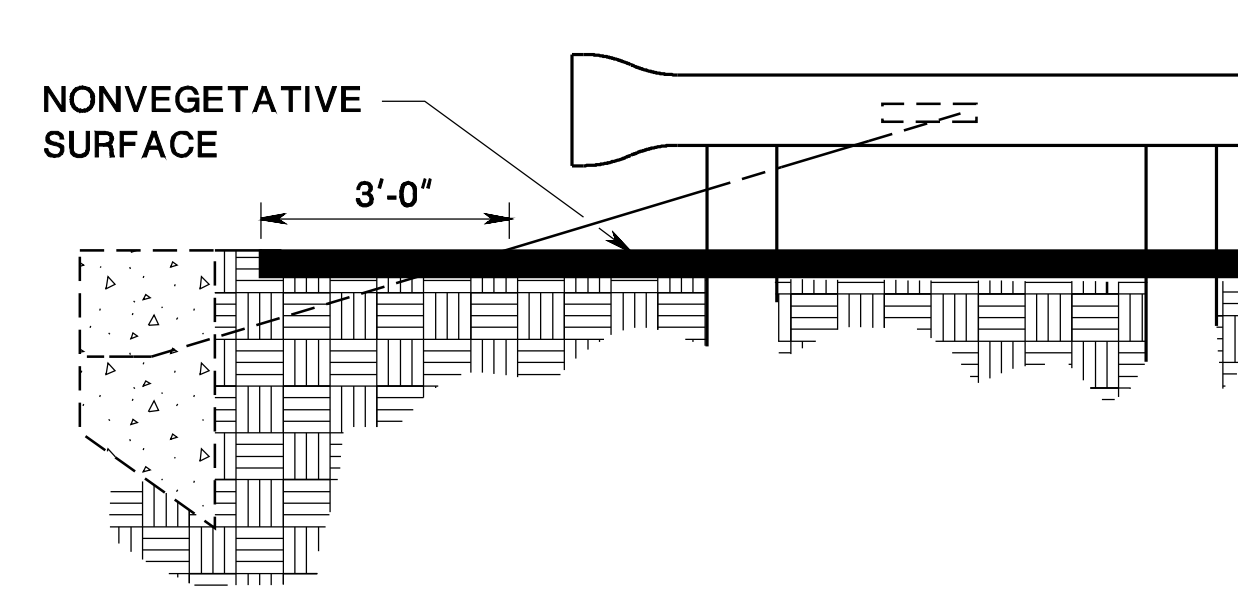
X	Y
GUIDE RAIL OFFSET FROM EDGE OF PAVEMENT	WIDTH OF NONVEGETATIVE SURFACE IN FRONT OF GUIDE RAIL
7'-0" OR GREATER	2'-0"
4'-0"	4'-0"
0'-0"	0'-0"



SECTION VIEW



SECTION VIEW



SECTION VIEW

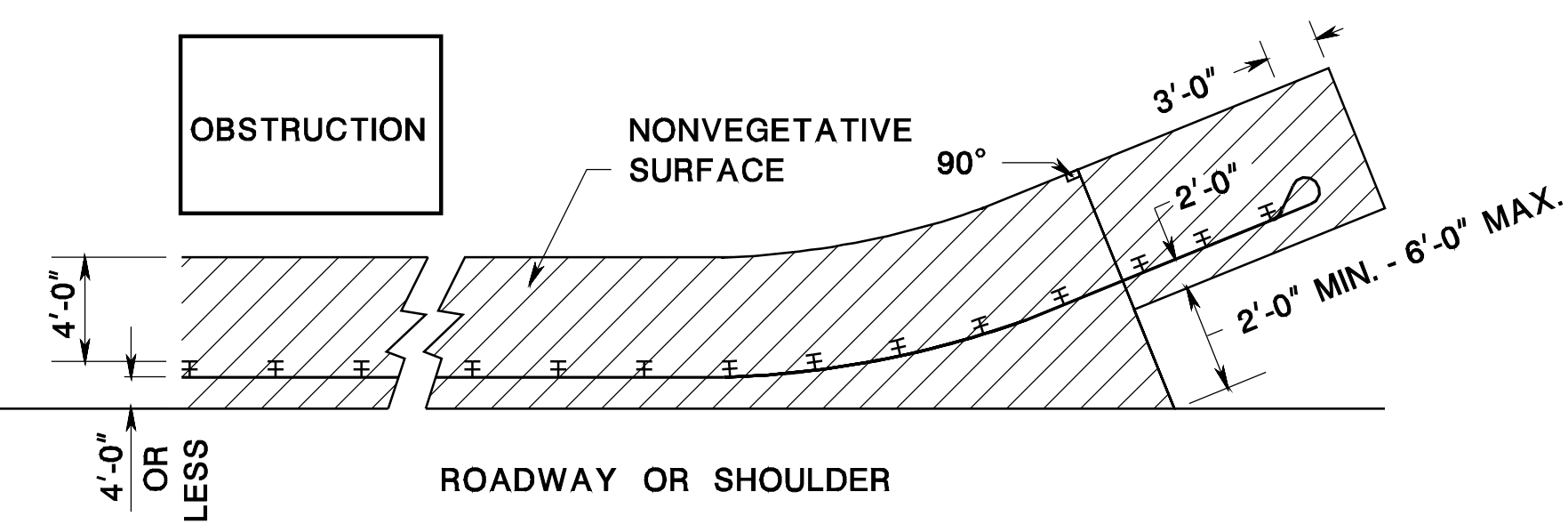
**NONVEGETATIVE SURFACES AROUND GUIDE RAIL BEHIND CURB OR RAISED BERM**

**NONVEGETATIVE SURFACE AT EDGE OF PAVEMENT ON UMBRELLA SECTION WHERE GUIDE RAIL IS USED**

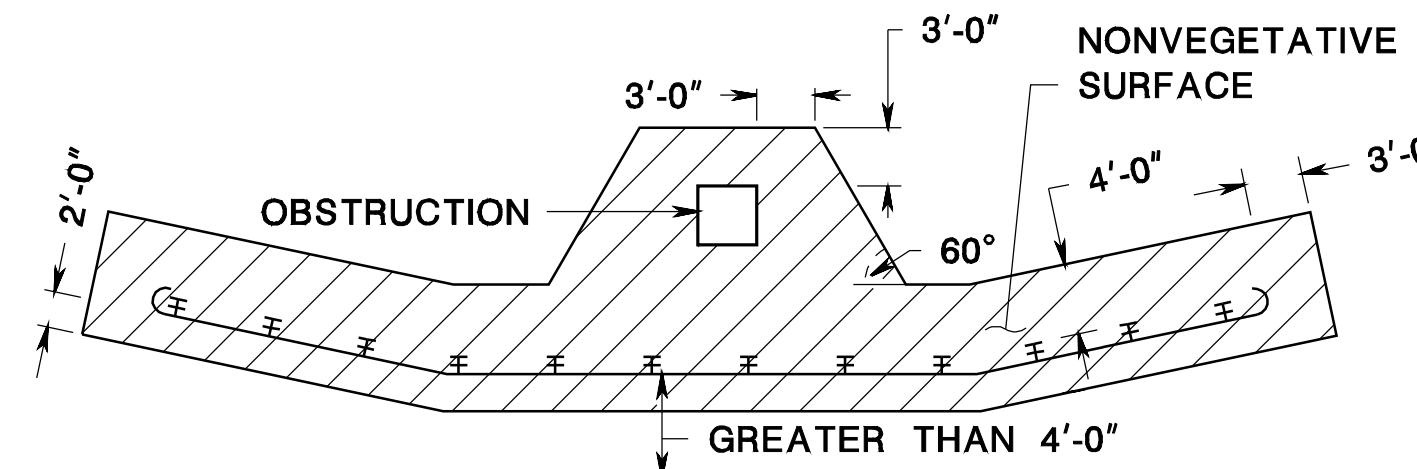
**NONVEGETATIVE SURFACES AROUND GUIDE RAIL ANCHORAGE**

**GENERAL NOTES:**

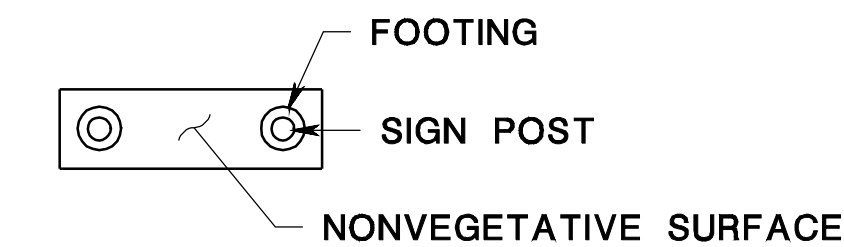
- IF THE END OF THE GUIDE RAIL IS BURIED IN THE SLOPE, THE LIMIT OF NONVEGETATIVE SURFACE RELATIVE TO THE BURIED GUIDE RAIL WILL BE DETERMINED BY THE RE.
- SEE TYPICAL SECTIONS FOR CROSS SLOPES IN ROADSIDE (BORDER OR SIDEWALK AREA).



PLAN VIEW



PLAN VIEW



PLAN VIEW

THE NONVEGETATIVE SURFACE SHALL FORM A RECTANGULAR PAD WHOSE OUTSIDE LIMITS EXTEND A MINIMUM OF 3'-0" BEYOND THE POST FOOTING.

**NONVEGETATIVE SURFACE**

N.T.S.

CD-608-1

NEW JERSEY DEPARTMENT OF TRANSPORTATION

**CONSTRUCTION DETAILS**

CD-608-1.1