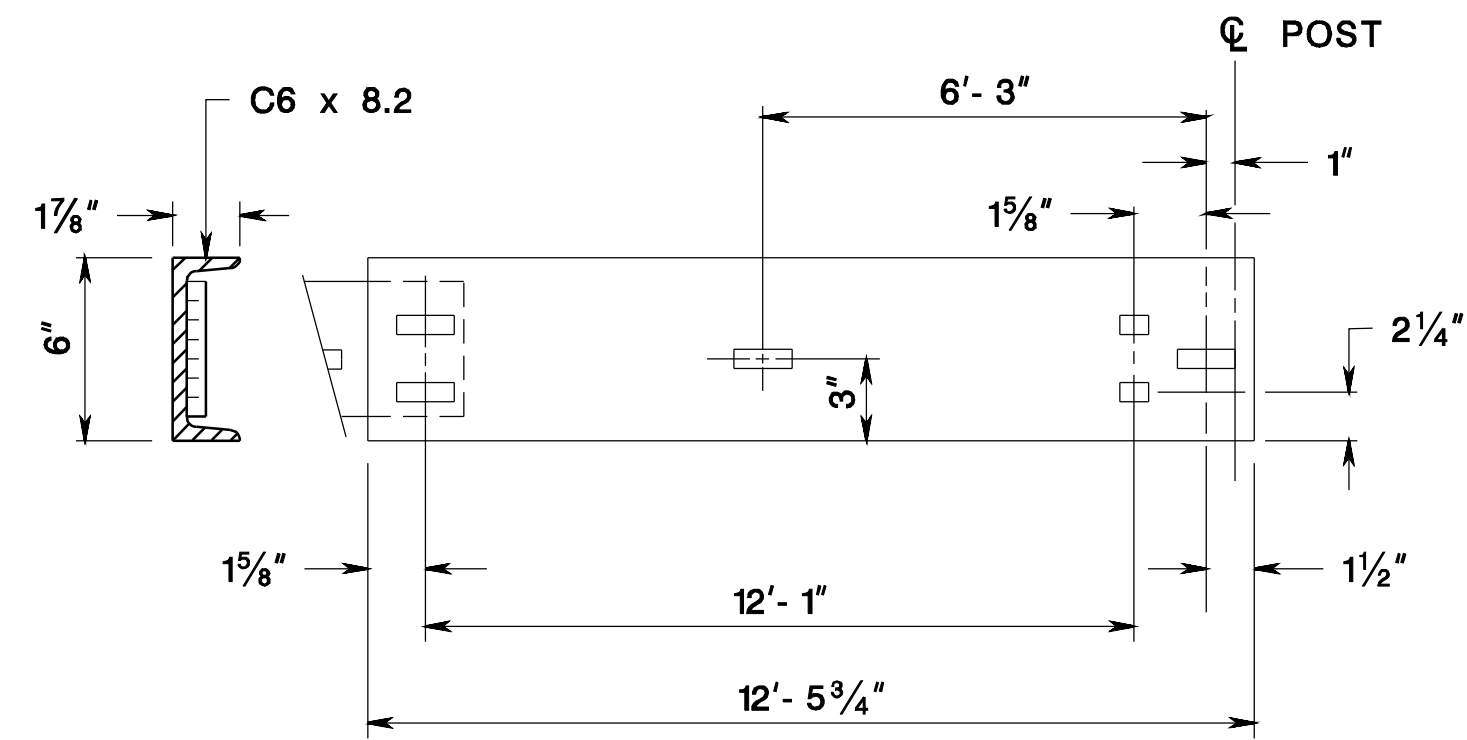


SPLICE PLATE

NOTE:
ALL RECTANGULAR SLOTS ARE 1/16" x 2"
ALL SQUARE HOLES ARE 1/16"

C6 x 8.2



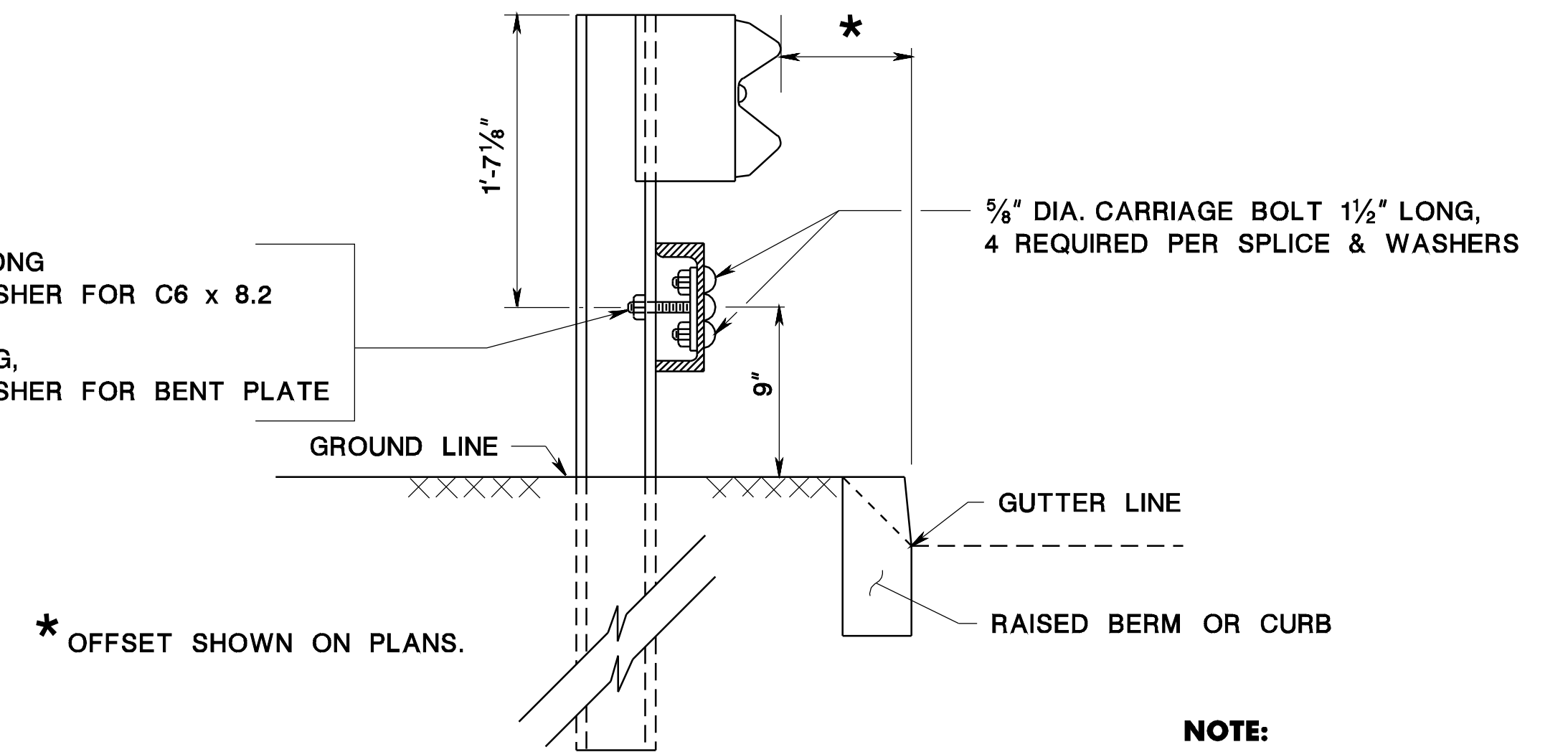
RUB RAIL MAY BE SUPPLIED IN LENGTHS OF 12'- 5 3/4" OR 24'- 11 3/4"

NOTE:
USE EITHER C6 x 8.2 OR BENT PLATE FOR RUB RAIL

CD-609-3.1

5/8" DIA. CARRIAGE BOLT 3" LONG
1 REQUIRED PER POST & WASHER FOR C6 x 8.2

5/8" CARRIAGE BOLT 4 1/2" LONG,
1 REQUIRED PER POST & WASHER FOR BENT PLATE

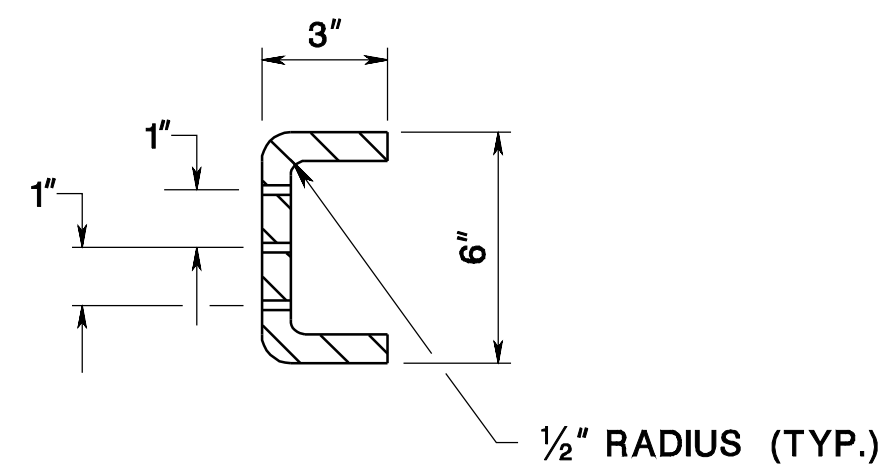


* OFFSET SHOWN ON PLANS.

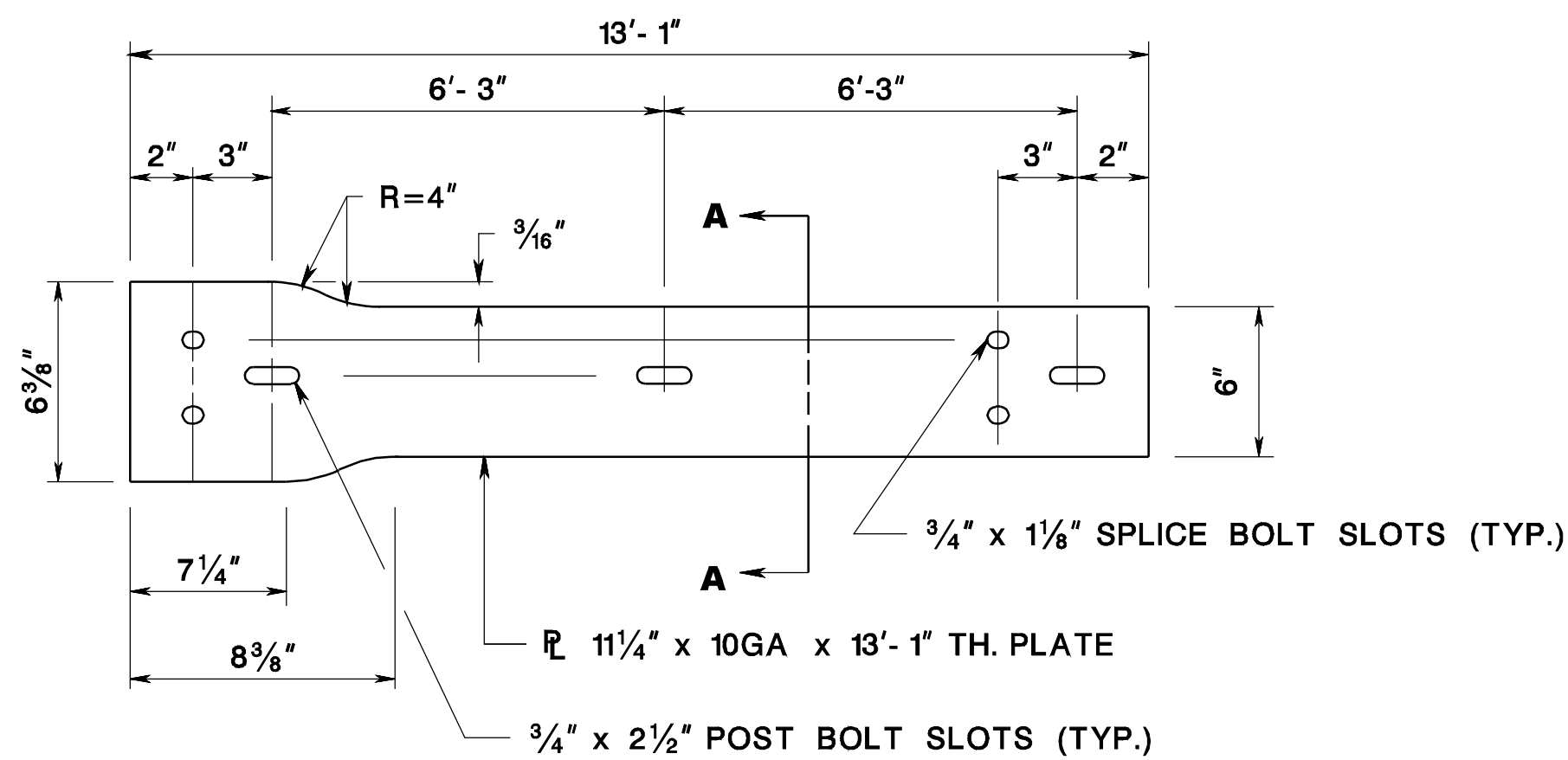
RUB RAIL SECTION

NOTE:
USE EITHER C6 x 8.2 OR BENT PLATE FOR RUB RAIL

CD-609-3.2



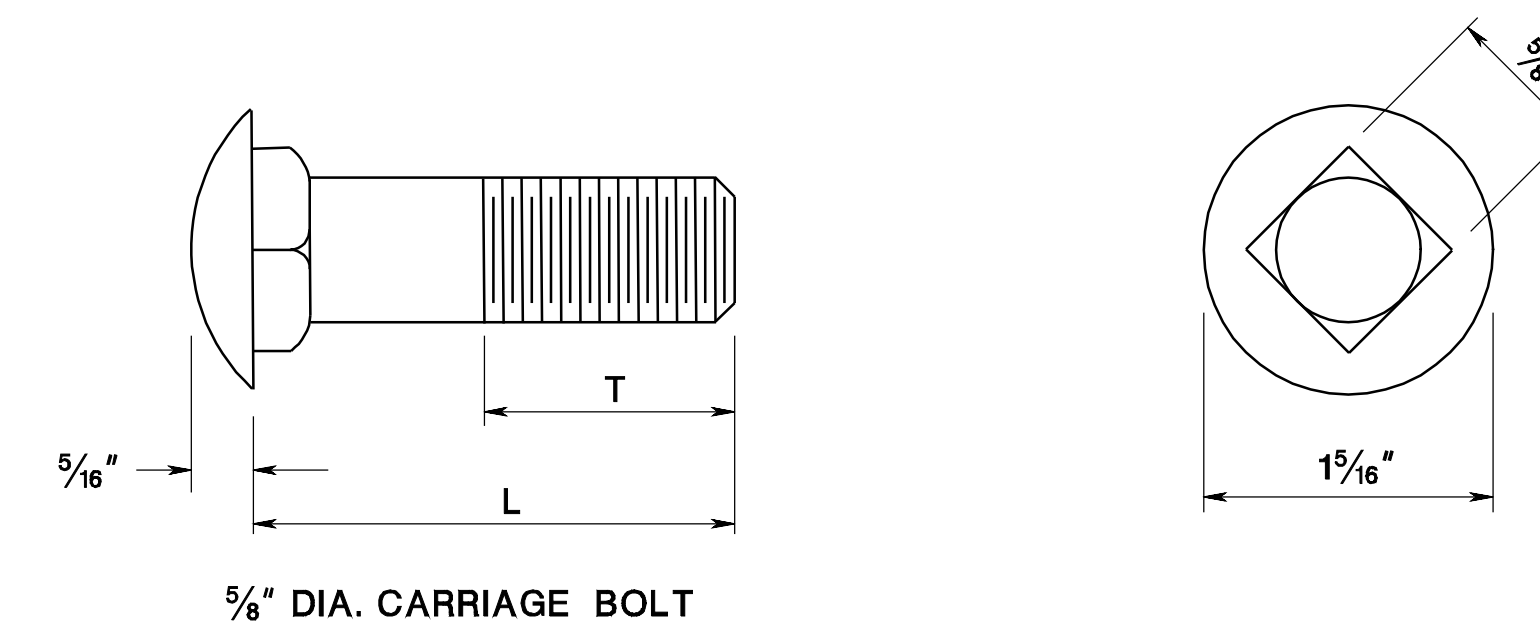
SECTION A-A



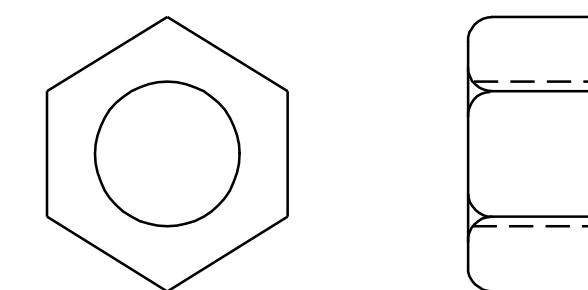
NOTE:
USE EITHER C6 x 8.2 OR BENT PLATE FOR RUB RAIL

BENT PLATE

CD-609-3.3



5/8" DIA. CARRIAGE BOLT

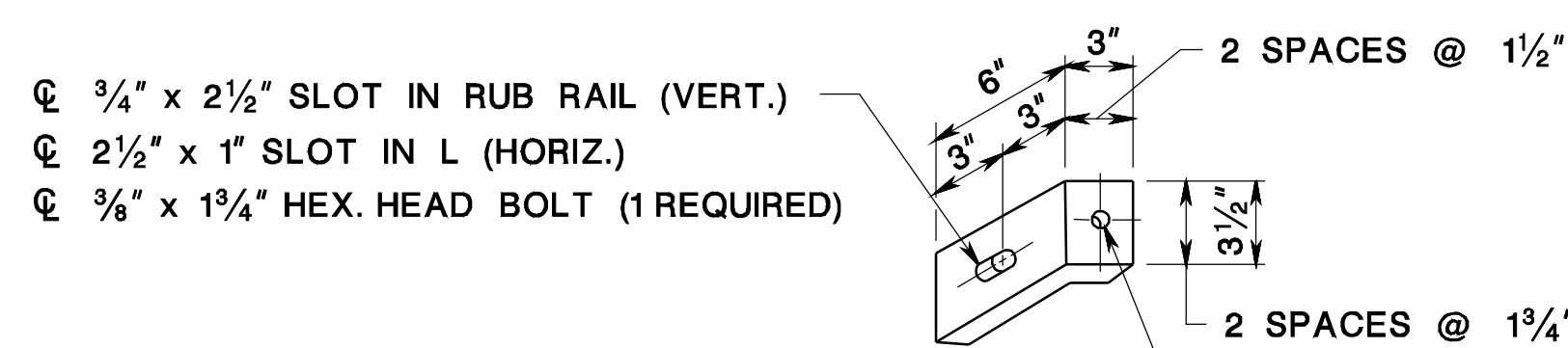


5/8" DIA. HEX NUT

L	THREAD LENGTH (T)
1 1/2"	FULL LENGTH
3"	1 1/2" MIN.
4 1/2"	1 1/2" MIN.

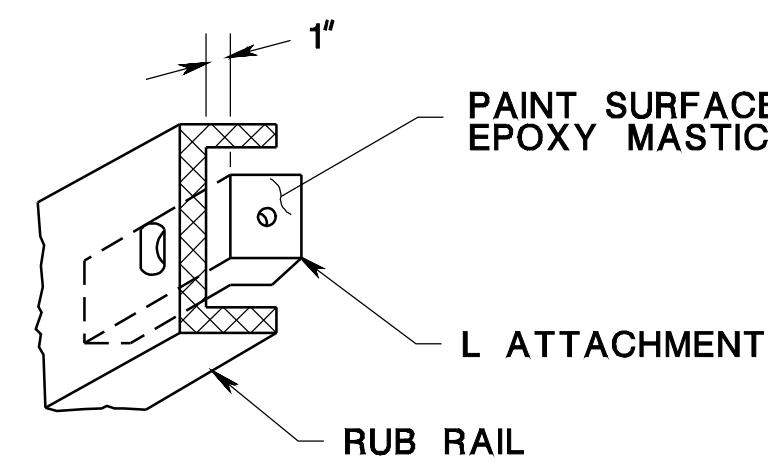
CARRIAGE BOLT DETAIL

CD-609-3.4



- 3/4" x 2 1/2" SLOT IN RUB RAIL (VERT.)
- 2 1/2" x 1" SLOT IN L (HORIZ.)
- 3/8" x 1 3/4" HEX. HEAD BOLT (1 REQUIRED)

1/16" DIA. HOLE FOR 5/8" DIA. BOLT.
8" LONG, FULLY THREADED & SET WITH EPOXY GROUT. (1 REQUIRED)



RUB RAIL ANGLE ATTACHMENT

SEE CD-609-11.2 FOR GENERAL NOTES

CD-609-3.5

RUB RAIL

N.T.S.

HMA = HOT MIX ASPHALT

CD-609-3

NEW JERSEY DEPARTMENT OF TRANSPORTATION

CONSTRUCTION DETAILS