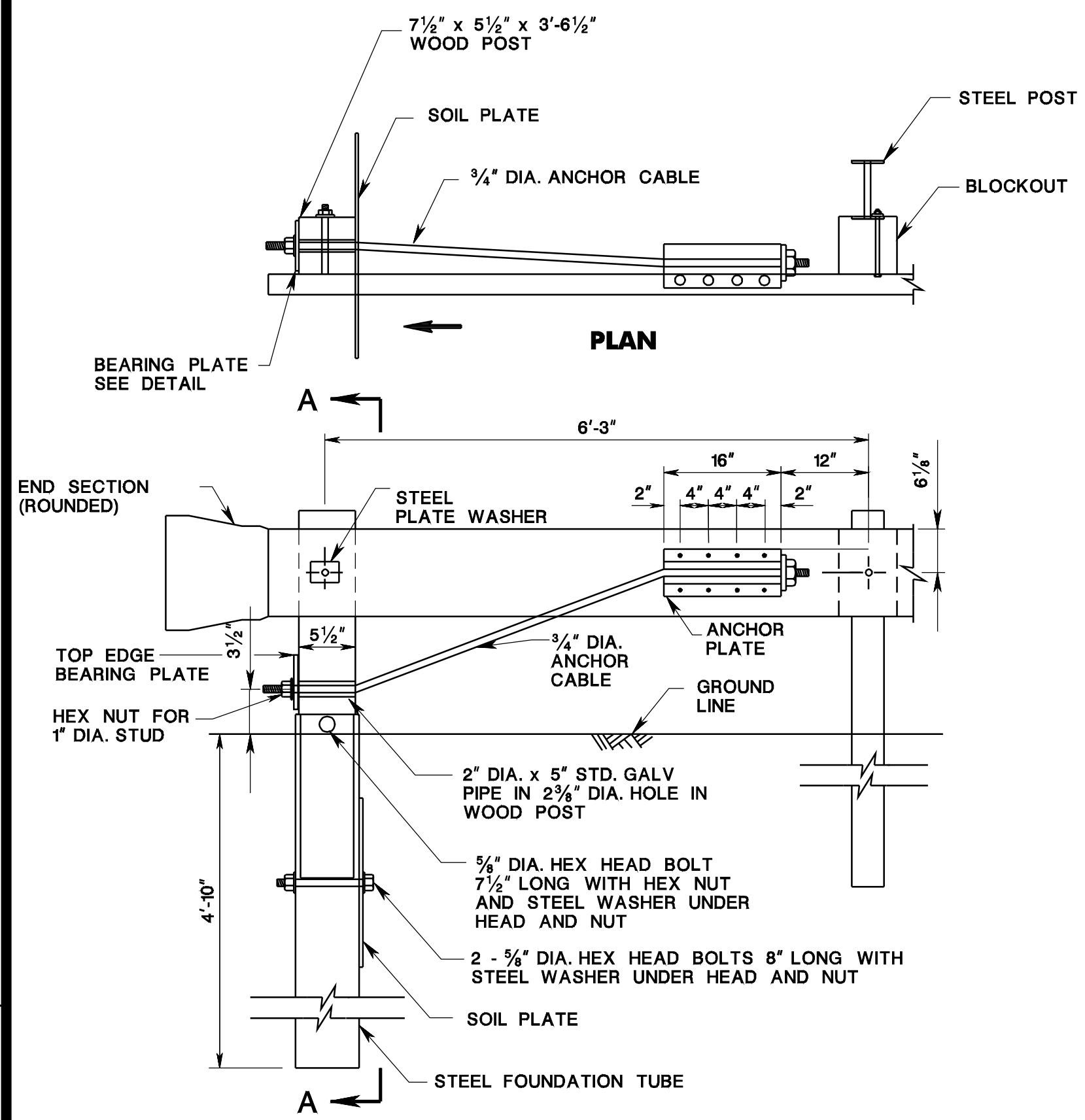
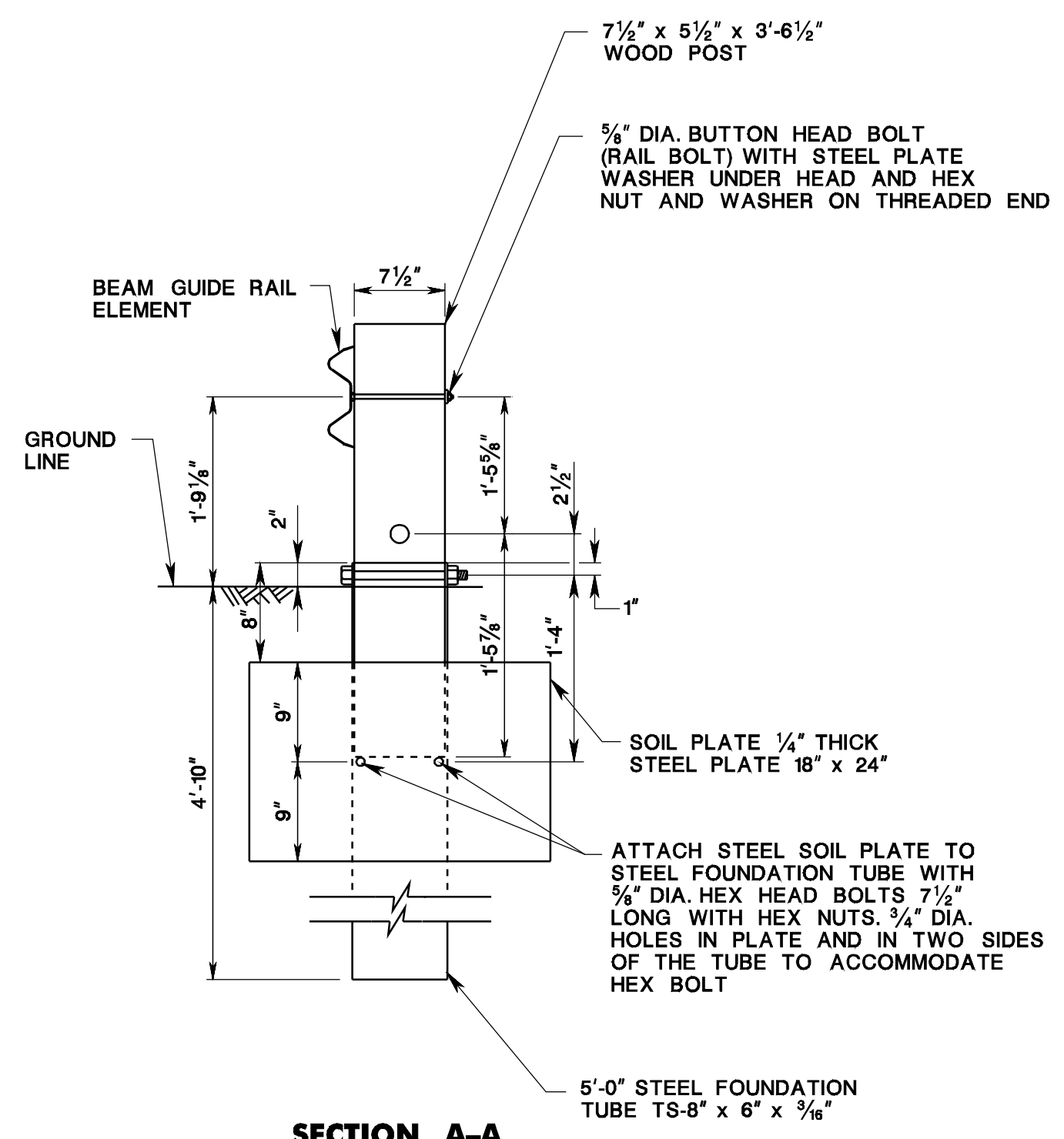


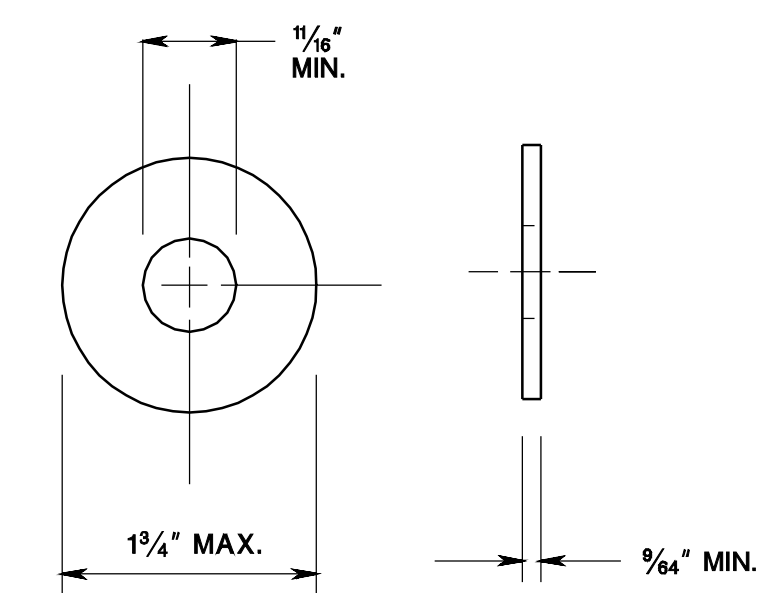
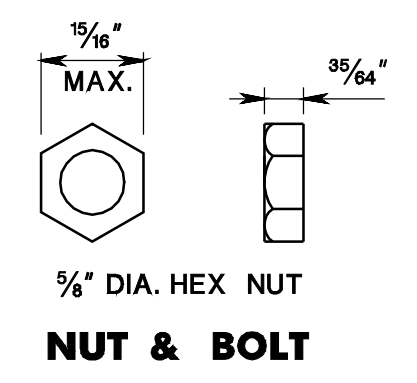
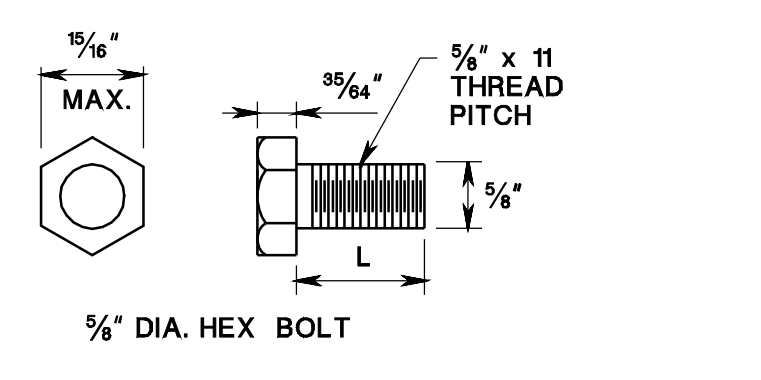
pen table= \\njdotprjw\vsystem\NJDOT\W\Projects\NJDOTEng\Plot\TBLS\Roadway\basic.tbl
 scale= 30.0000000:1.0000000
 date= 17-DEC-2007 09:47
 ID= TFXBHAV
 BDC0703-ORIGINAL SHEET
 file=



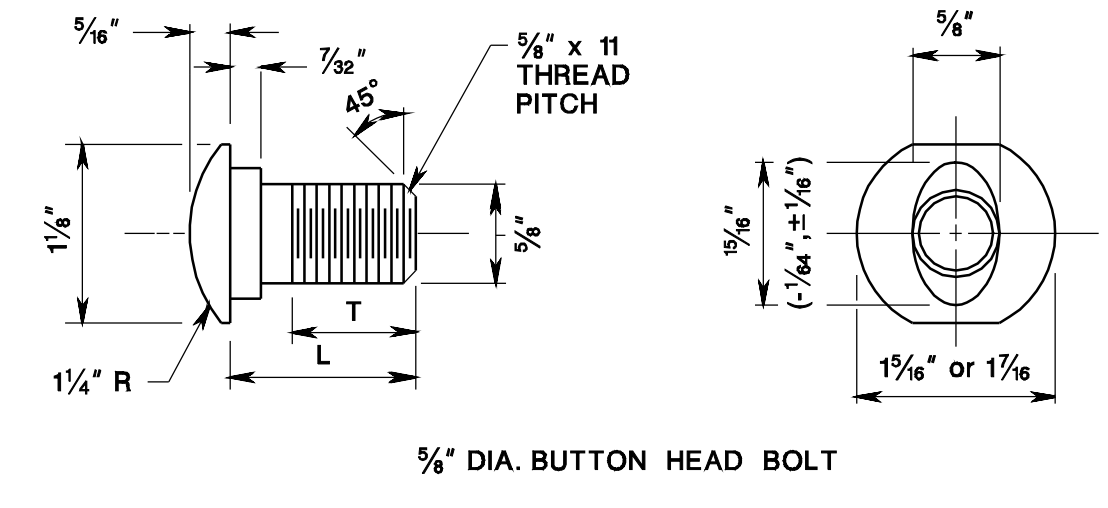
ELEVATION
BEAM GUIDE RAIL END ANCHORAGE



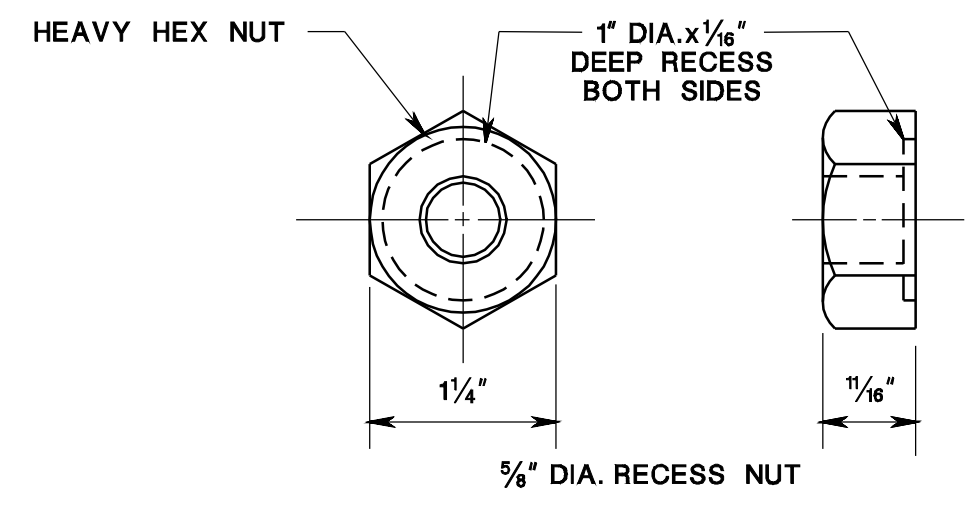
SECTION A-A
5'-0" STEEL FOUNDATION TUBE TS-8" x 6" x 3/16"



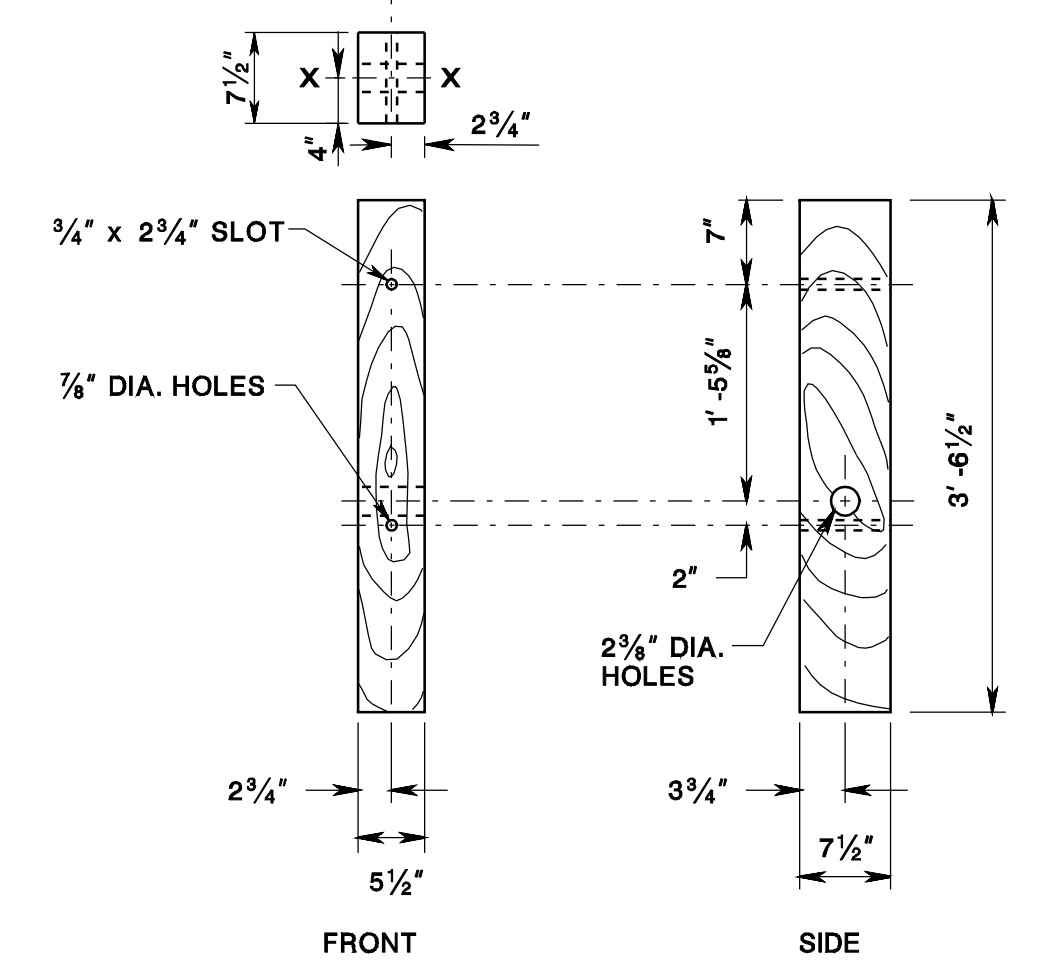
STEEL WASHER



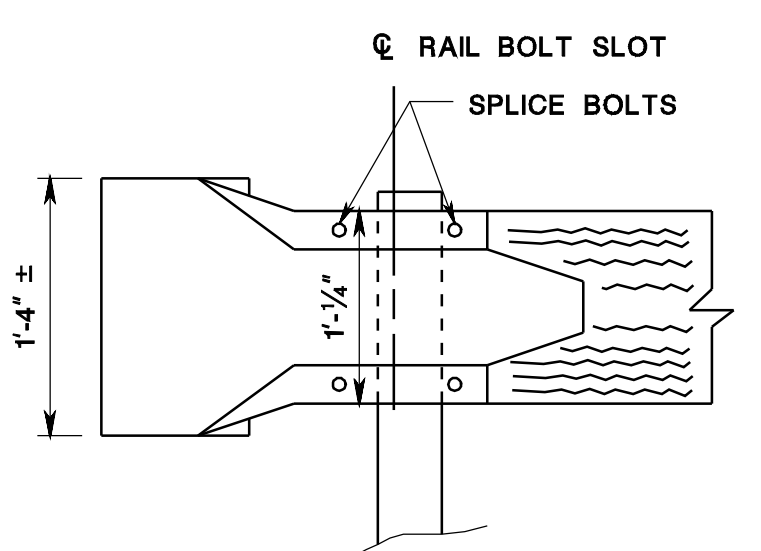
TYPE	L	MIN. THREAD LENGTH (T)
RAIL	10"	4"
SPLICE	1 1/4"	1 1/4"



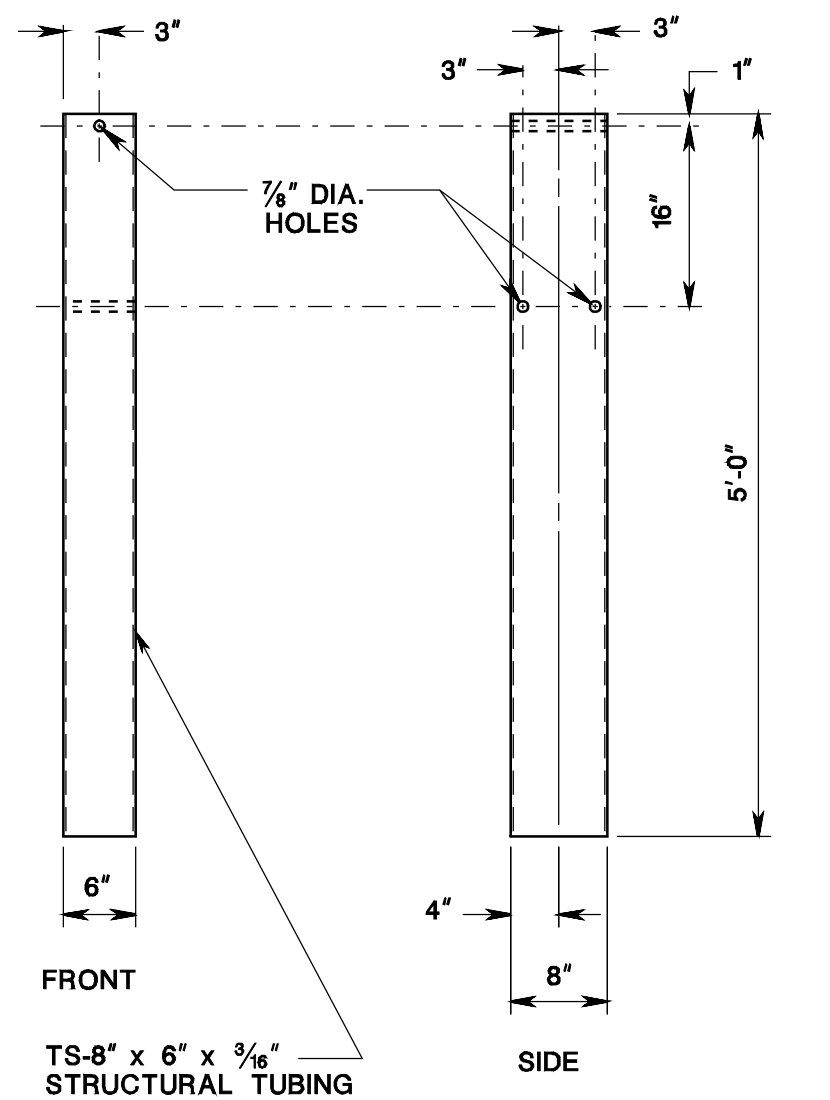
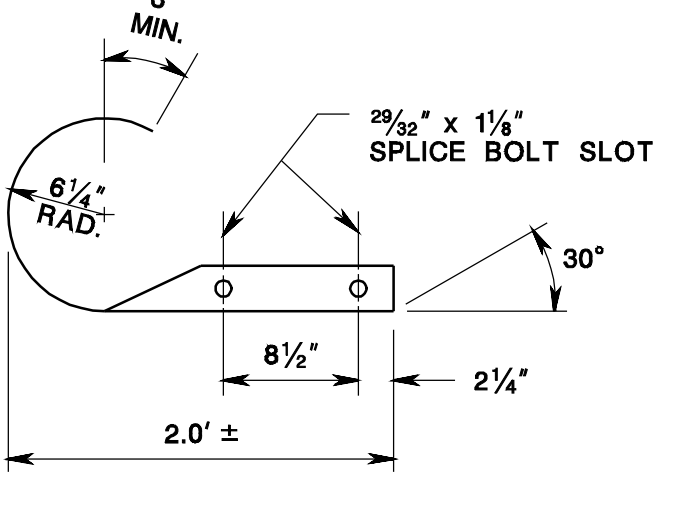
RAIL NUT & BOLT



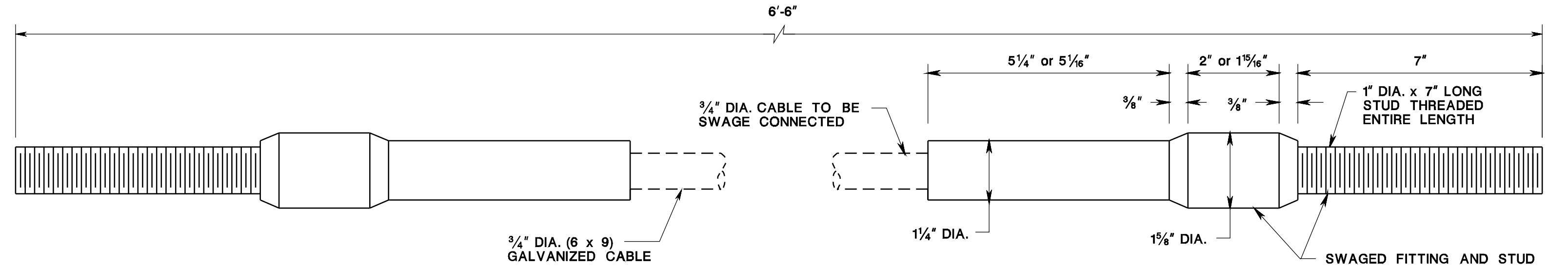
WOOD POST



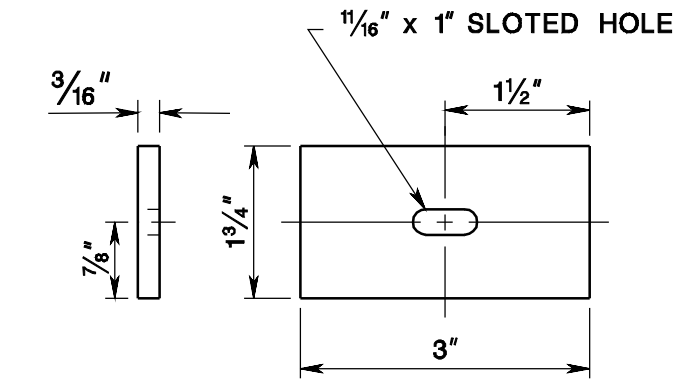
END SECTION (ROUNDED)



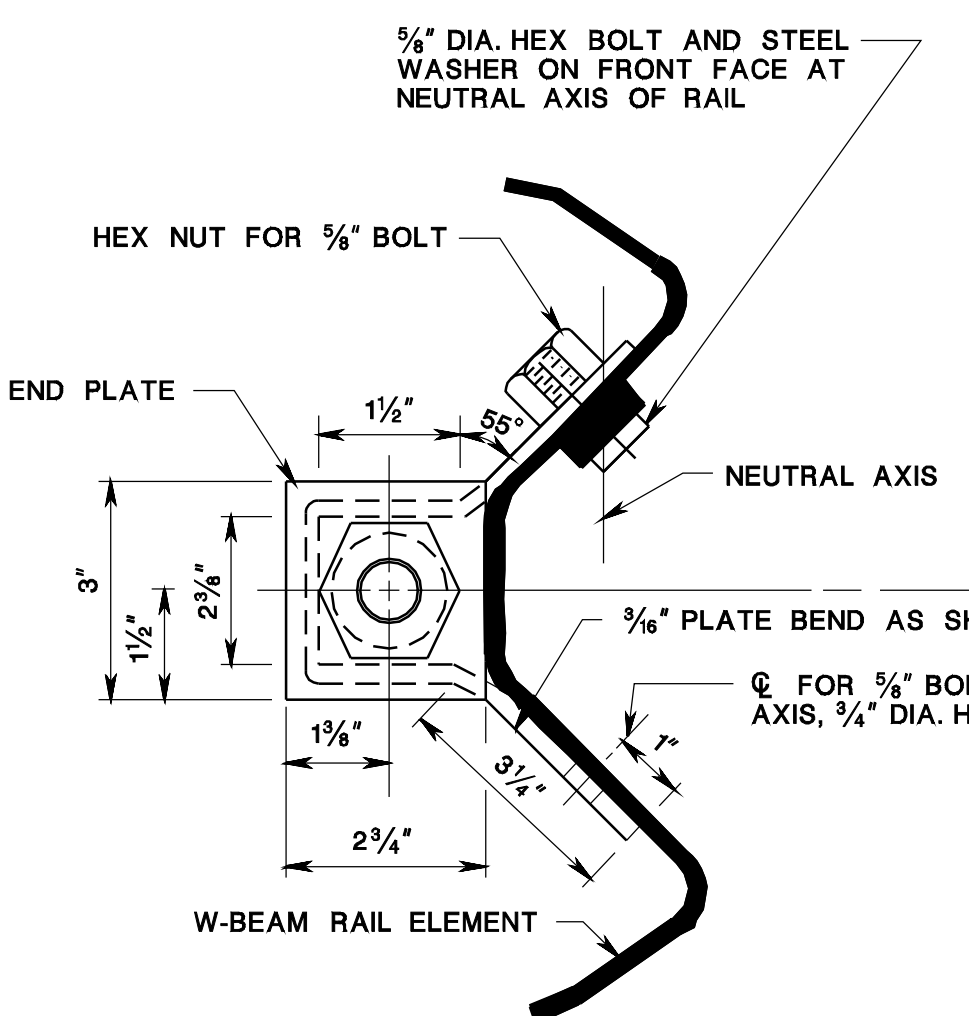
STEEL FOUNDATION TUBE



CABLE ASSEMBLY

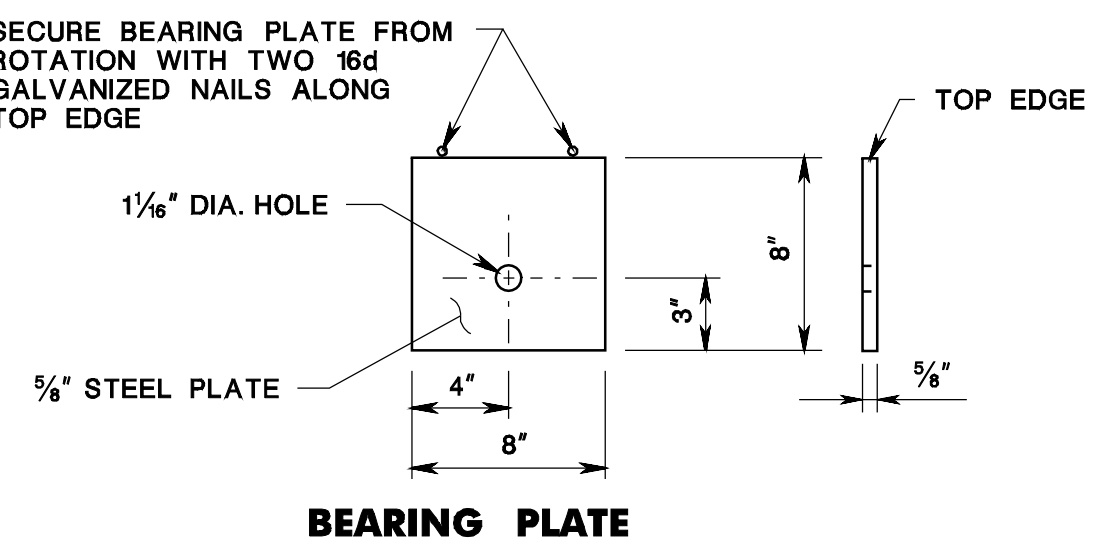


STEEL PLATE WASHER

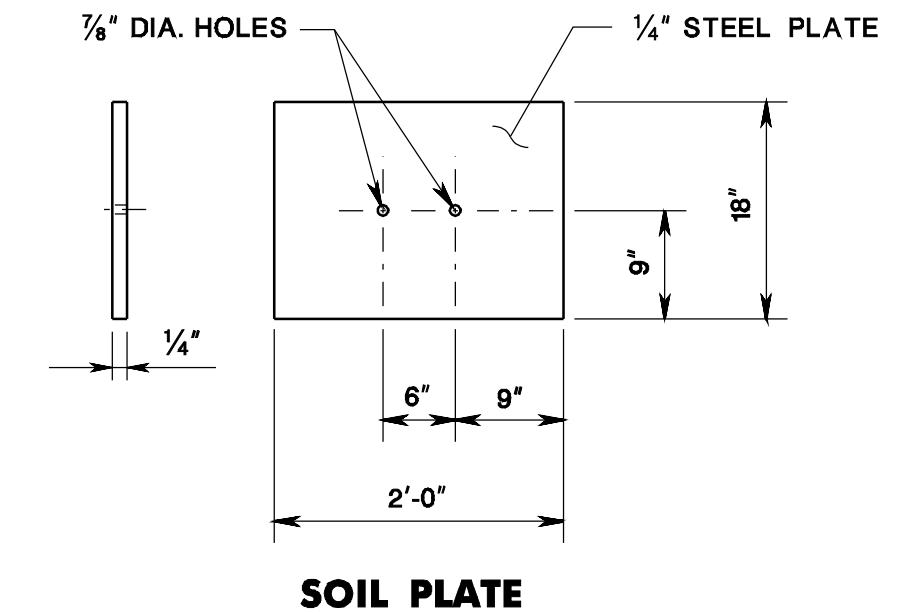


ANCHOR PLATE

NOTE:
 OTHER ANCHOR CABLE ASSEMBLIES MAY BE USED. MINIMUM BREAKING STRENGTH OF ASSEMBLY SHALL BE 40,000 LBS.



BEARING PLATE



SOIL PLATE

STANDARD SWAGED CONNECTION CONNECTION FOR 3/4" CABLE. SEE NOTE IN STANDARD SWAGED CONNECTION DETAIL

SECURE BEARING PLATE FROM ROTATION WITH TWO 16d GALVANIZED NAILS ALONG TOP EDGE

PAYMENT FOR ITEM ANCHORAGE SHALL INCLUDE THE ANCHOR PLATE, CABLE ASSEMBLY, WOOD POST, FOUNDATION TUBE AND SOIL PLATE

BEAM GUIDE RAIL ANCHORAGE
 N.T.S.

NEW JERSEY DEPARTMENT OF TRANSPORTATION

CONSTRUCTION DETAILS

CD-609-4