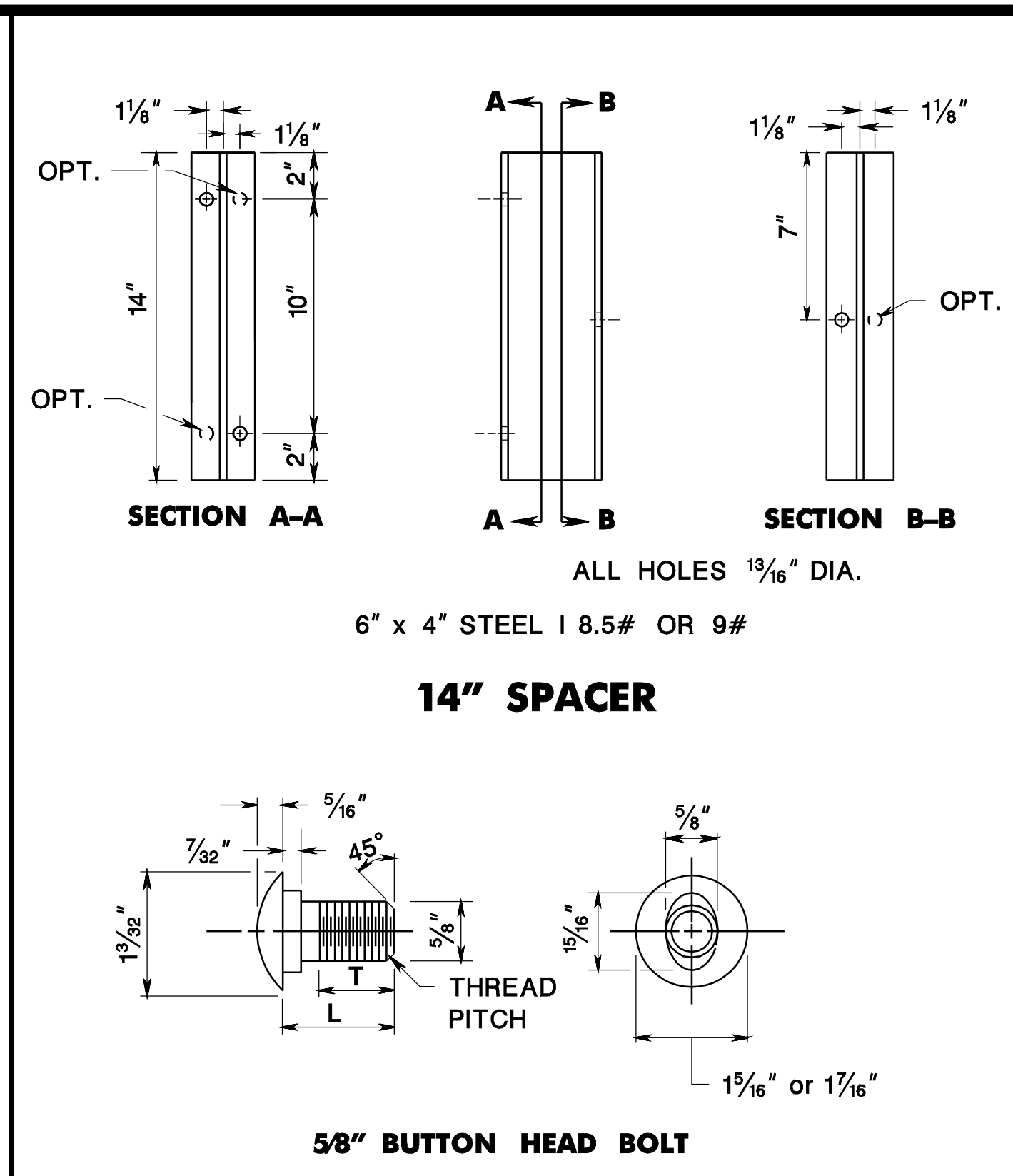
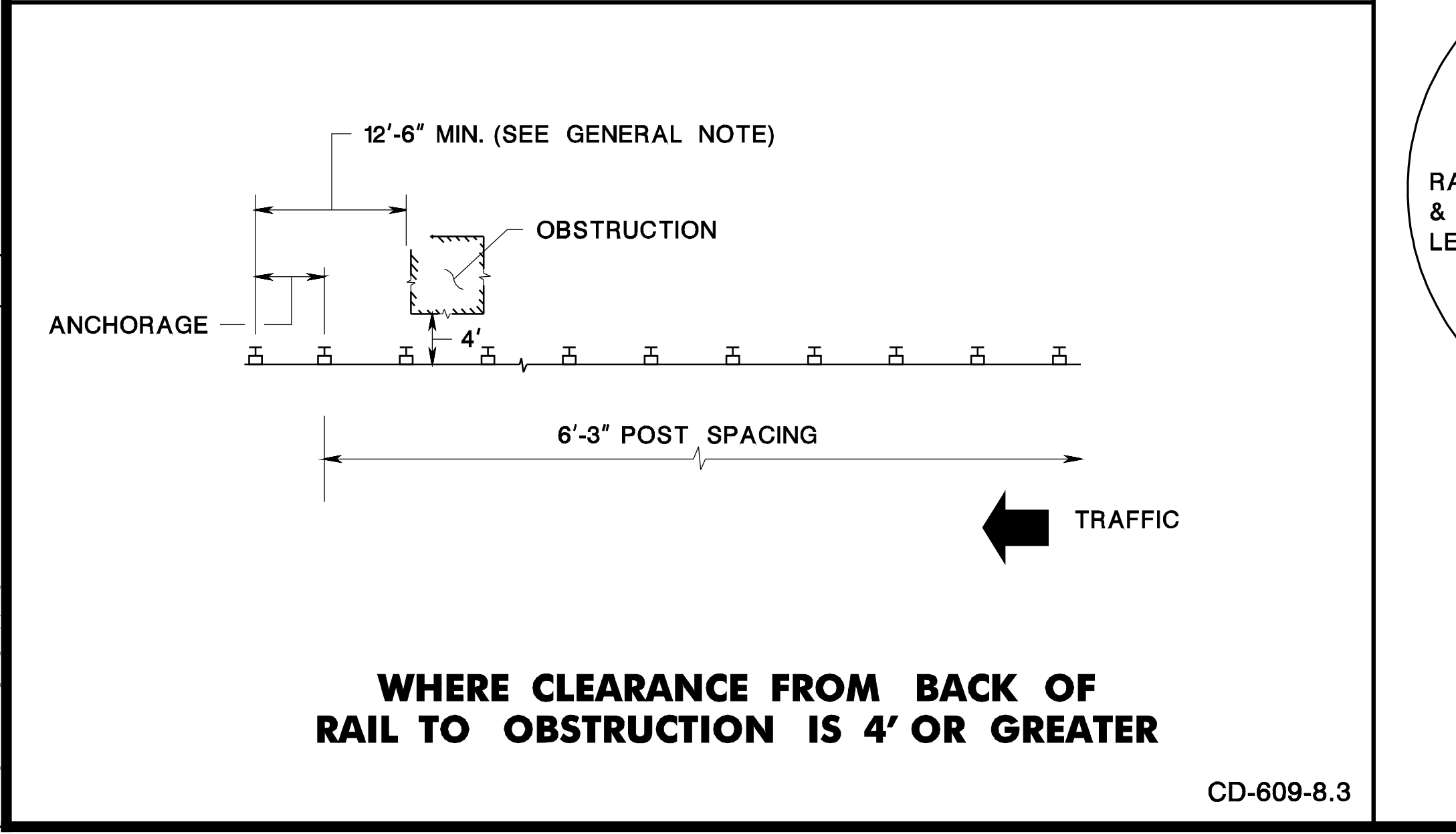
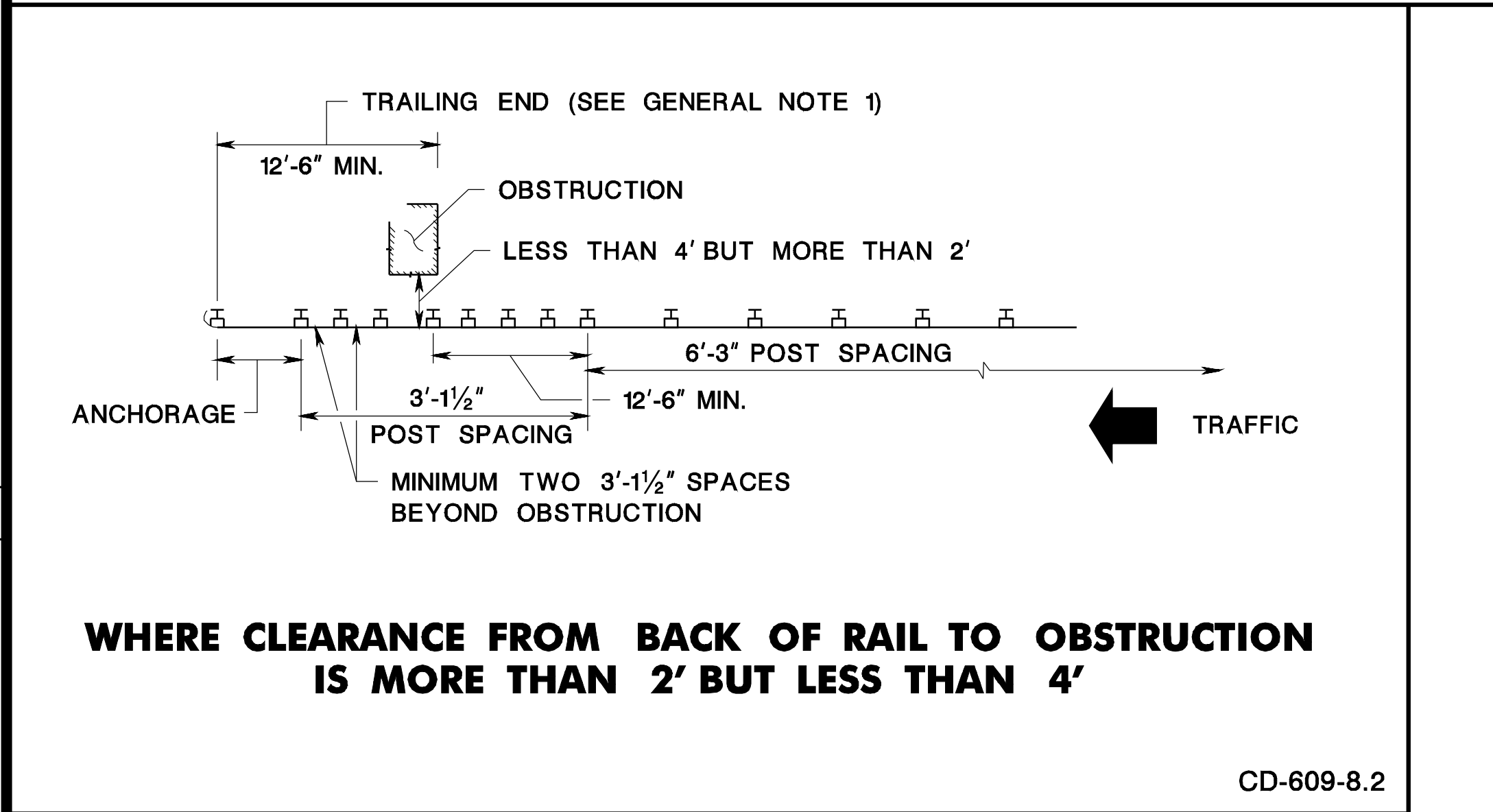
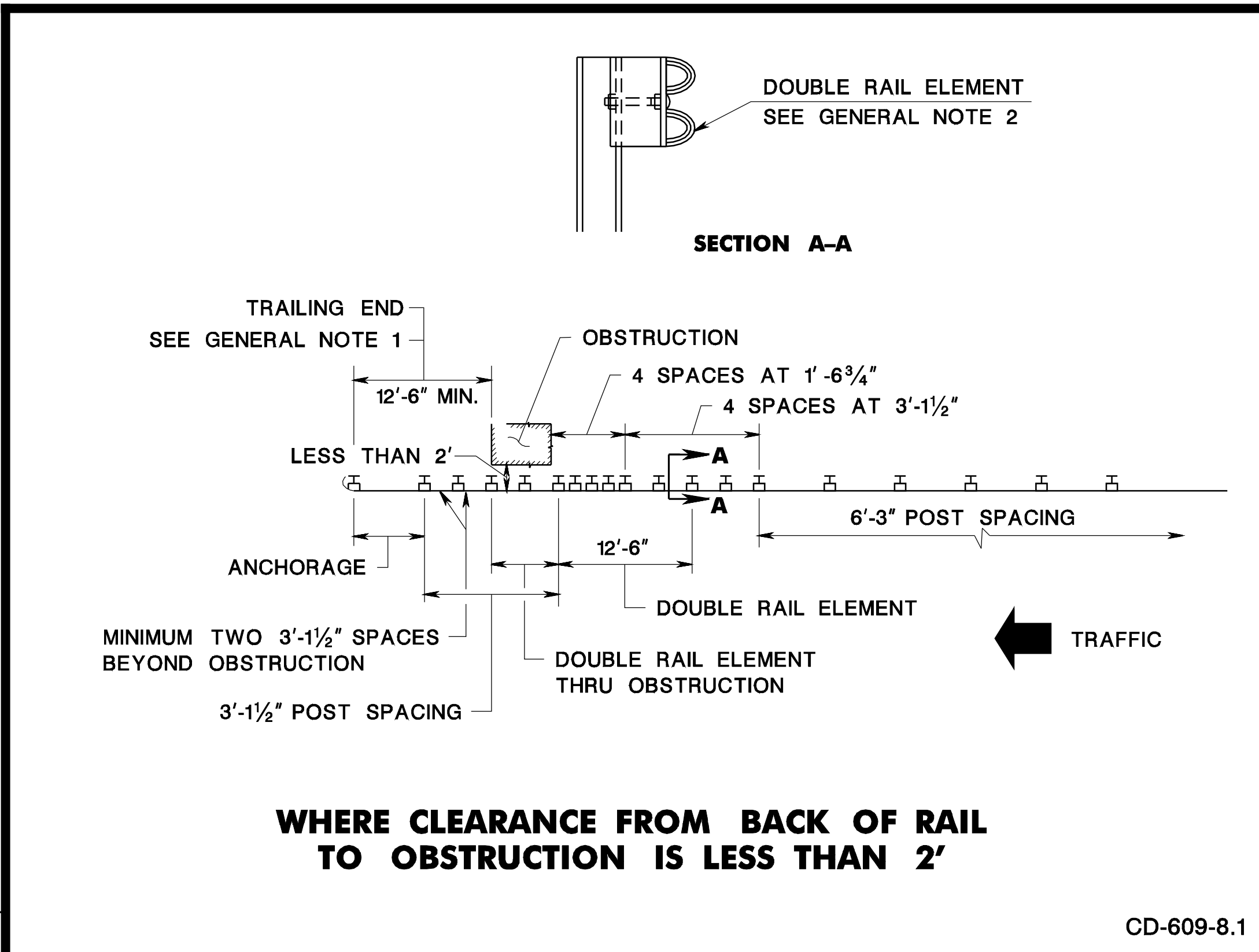
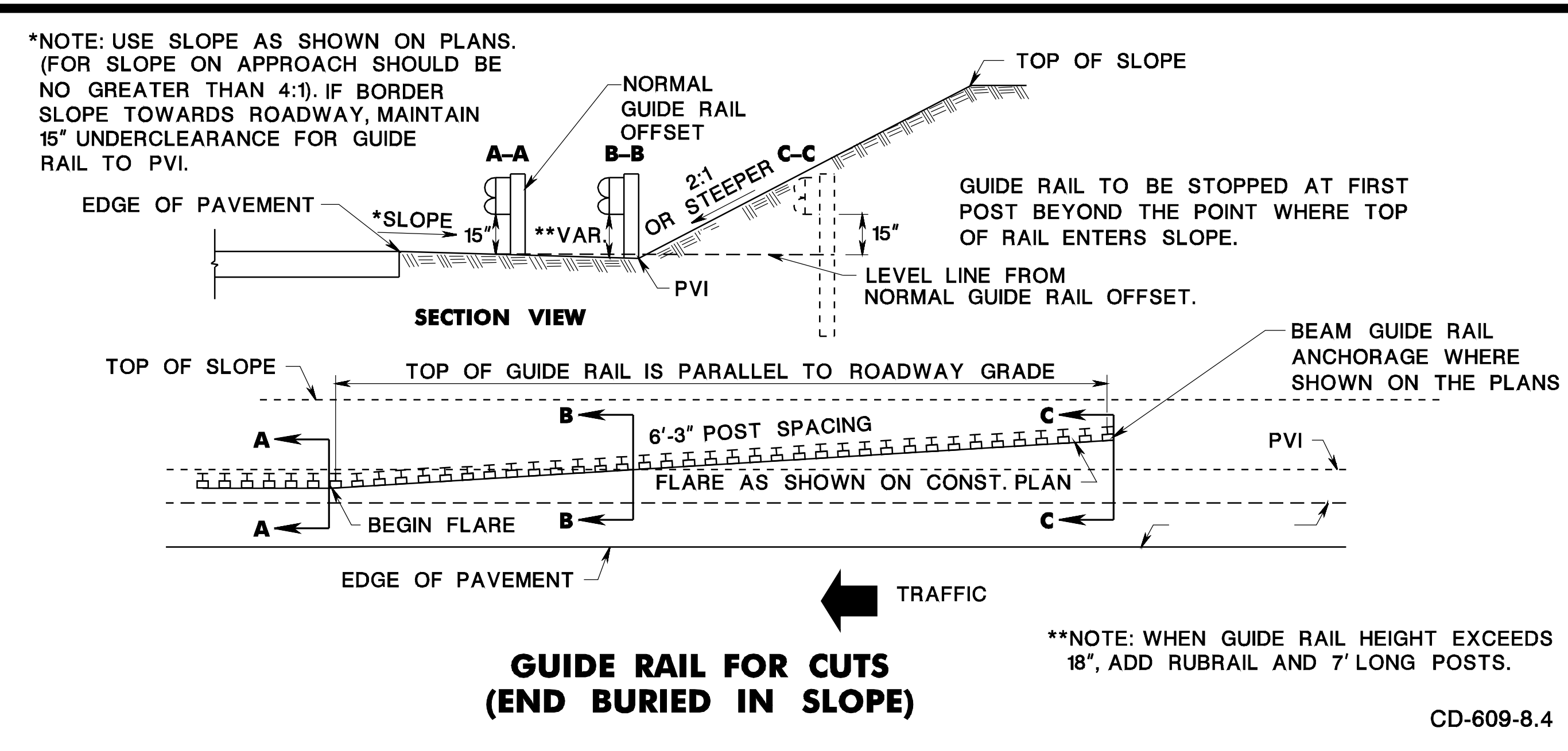
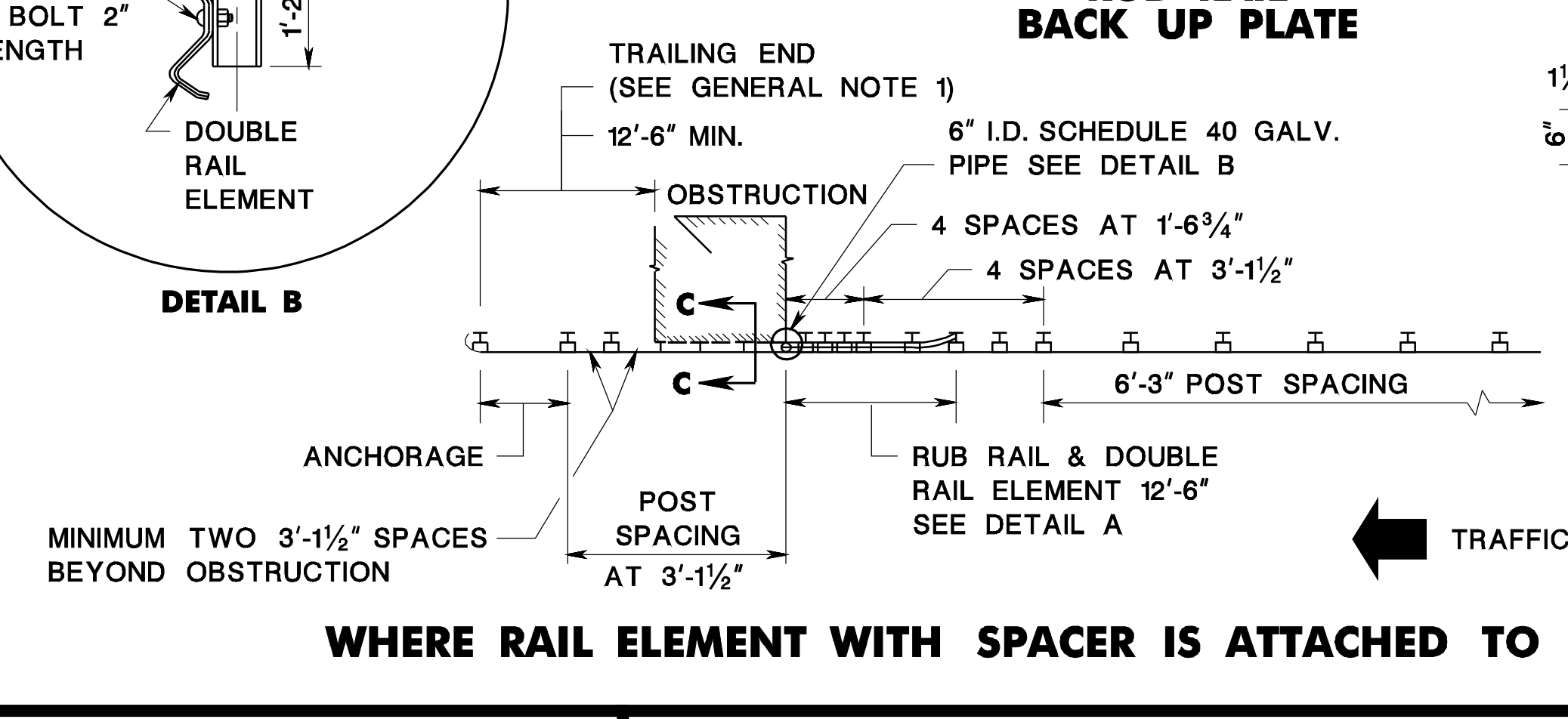
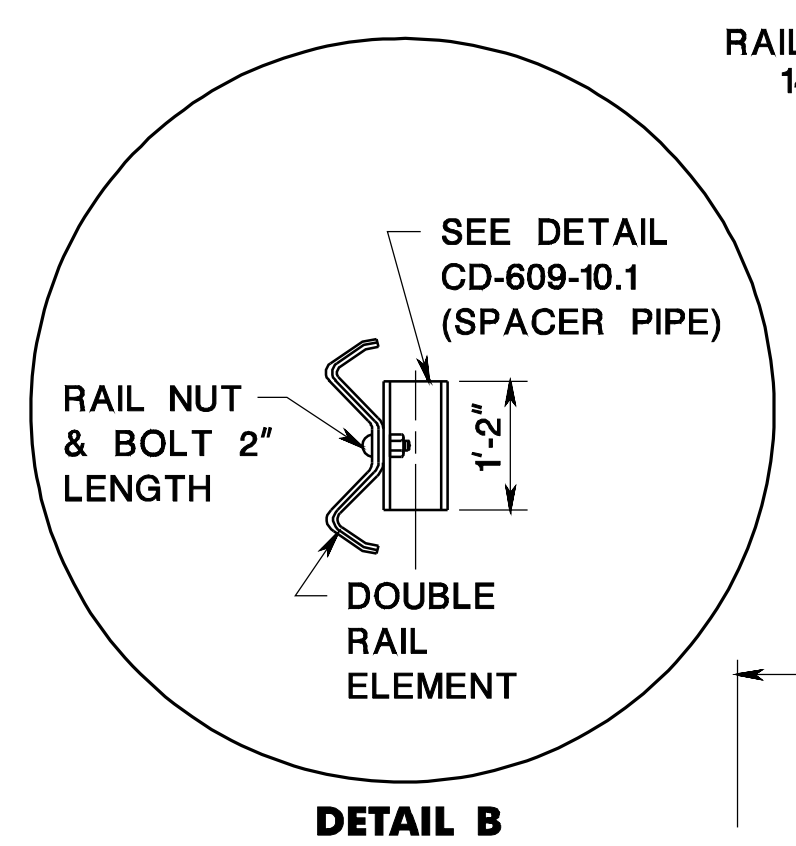
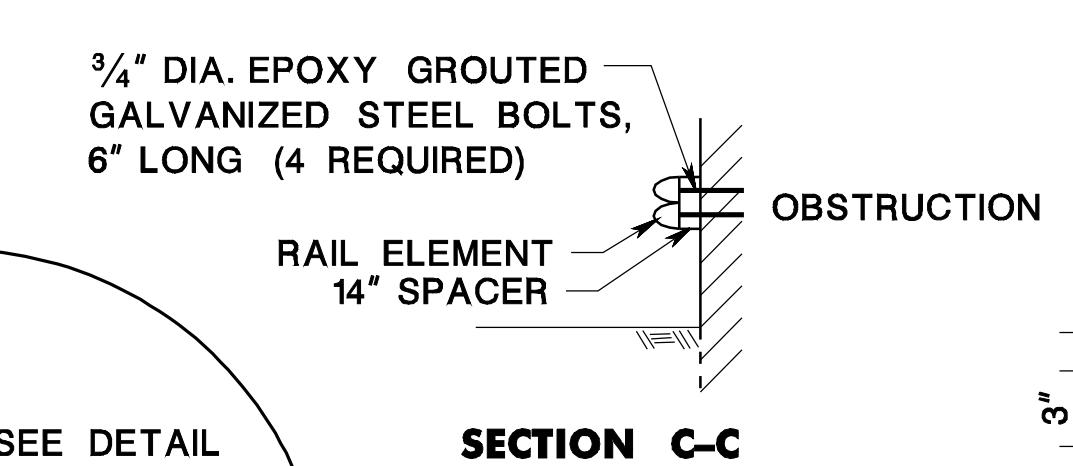
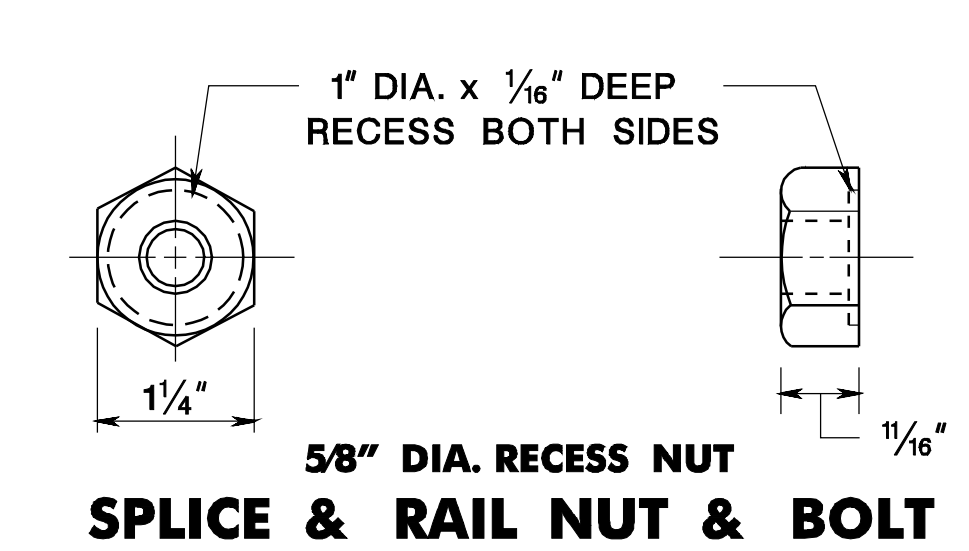


pen table= \\Njdotprjws\vsystem\Njdotprjws\Projects\NJDOTEng\Plot\TBLa\Roadway\basic.tbl  
 scale= 30.0000000:1.0000000  
 date= 17-DEC-2007 09:47  
 ID= TPXBHAY  
 BDC07D-01- ORIGINAL SHEET

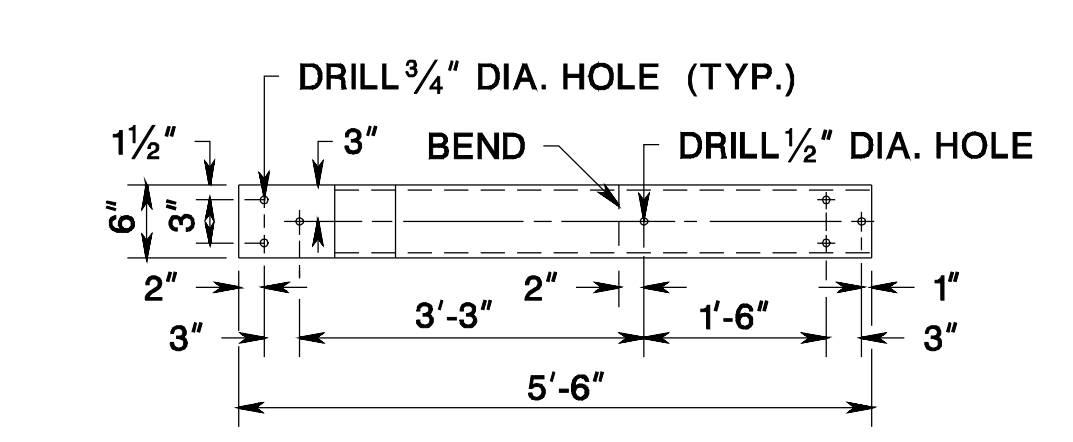
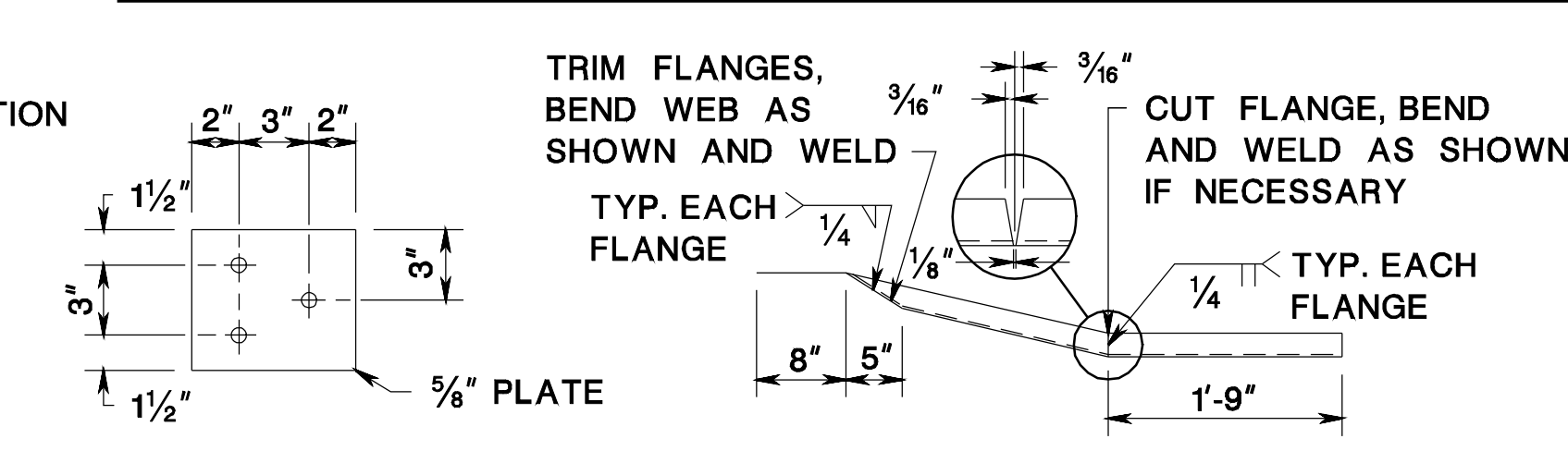
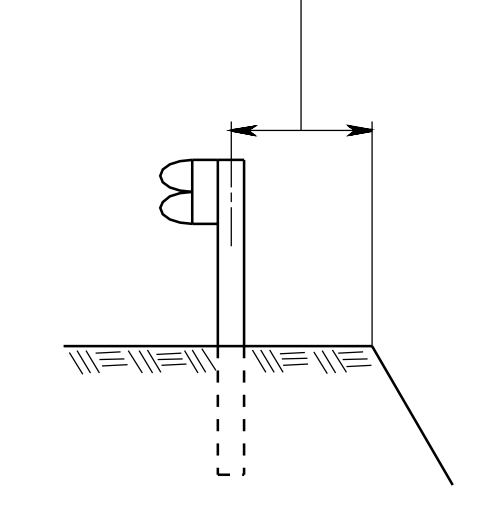


TYPE	L	MIN. THREAD LENGTH
SPLICE	1 <sup>3</sup> / <sub>8</sub> "	1 <sup>3</sup> / <sub>16</sub> "
RAIL	2"	1 <sup>1</sup> / <sub>2</sub> "



**IF LESS THAN 2'**

SLOPES	ADDITIONAL POST LENGTH FEET
FLATTER THAN 6H:1V	NO CHANGE
6H:1V TO 4H:1V	1'
3H:1V TO 2H:1V	2'
STEEPER THAN 2H:1V	4'



- GENERAL NOTES**
- WHERE A CRASHWORTHY END TREATMENT IS SHOWN AT THE TRAILING END ON THE PLANS, THE POST SPACING AND DOUBLE RAIL ELEMENT FOR THE GUIDE RAIL SHALL BE THE SAME AS THE APPROACH END.
  - WHERE DOUBLE RAIL ELEMENT IS REQUIRED, THE ADDITIONAL RAIL ELEMENT SHOULD BE ADDED BEHIND THE CONTINUOUS FRONT RAIL. CD-609-8.7

**BEAM GUIDE RAIL END TREATMENT**

N.T.S.

CD-609-8

NEW JERSEY DEPARTMENT OF TRANSPORTATION

**CONSTRUCTION DETAILS**

65  
146