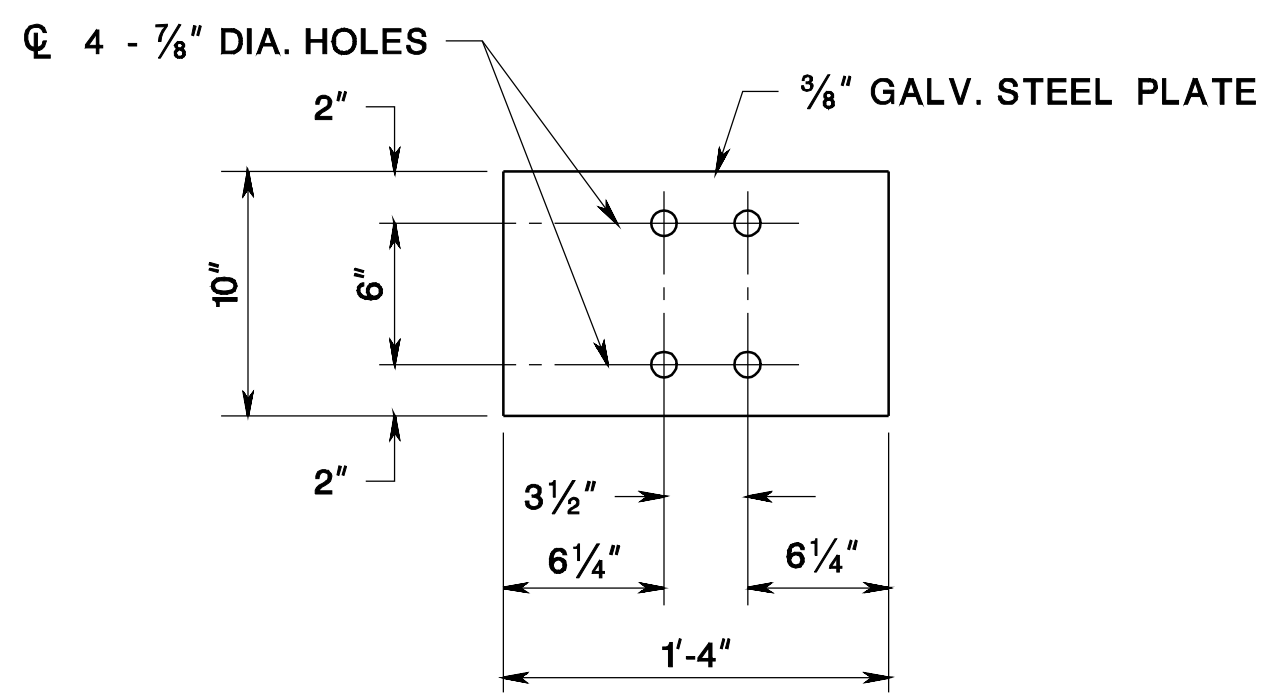
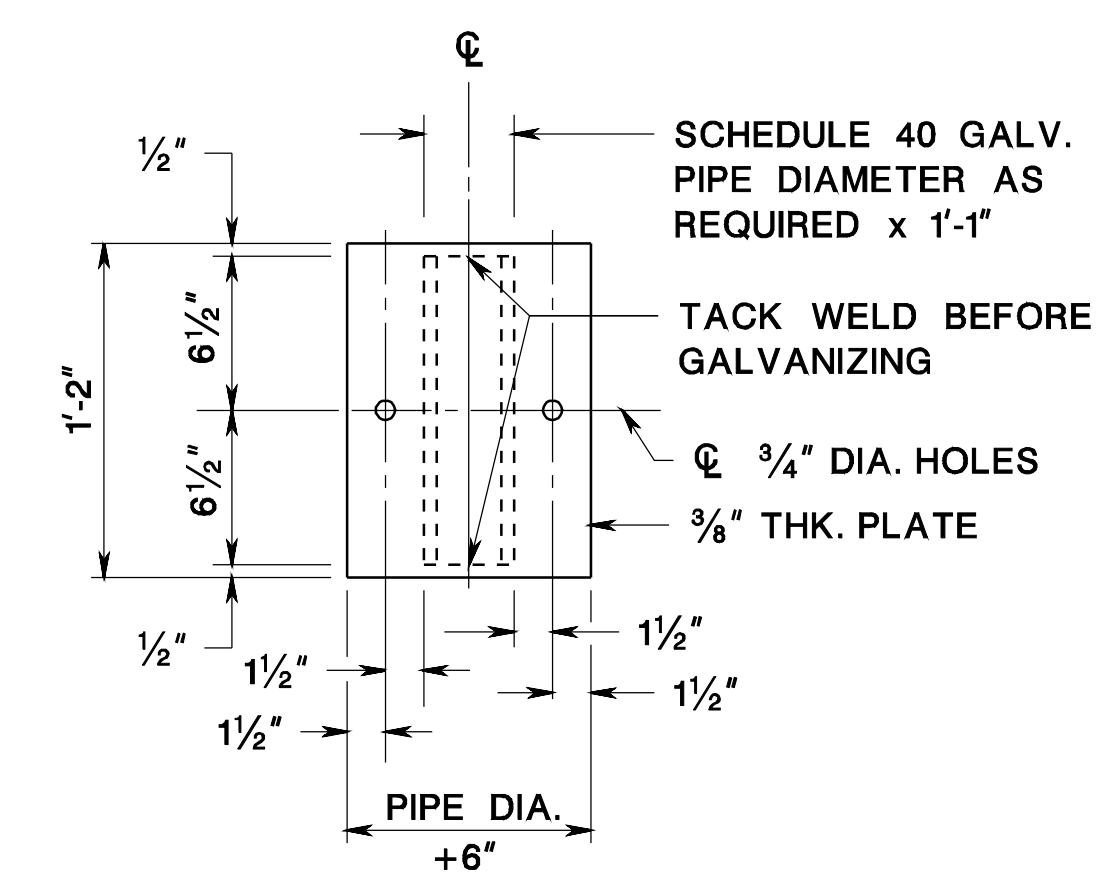


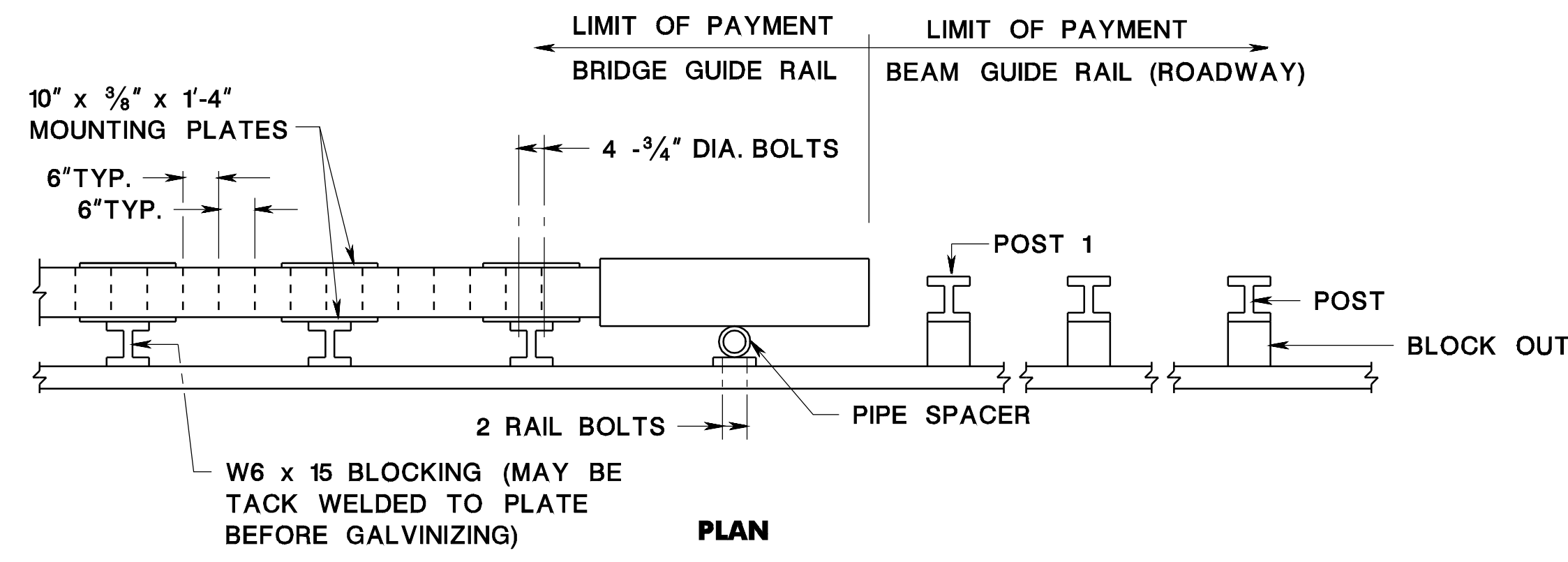
pen table= \\N\jdotprjws\vsystem\N\DOTWWS\Projects\NJDOTEng\Plot\TBLS\Roadway\basic.tbl  
 scale=30.000000;1.000000  
 date=17-DEC-2007 09:48  
 ID=TPXBHAY  
 BDC07D-01 ORIGINAL SHEET



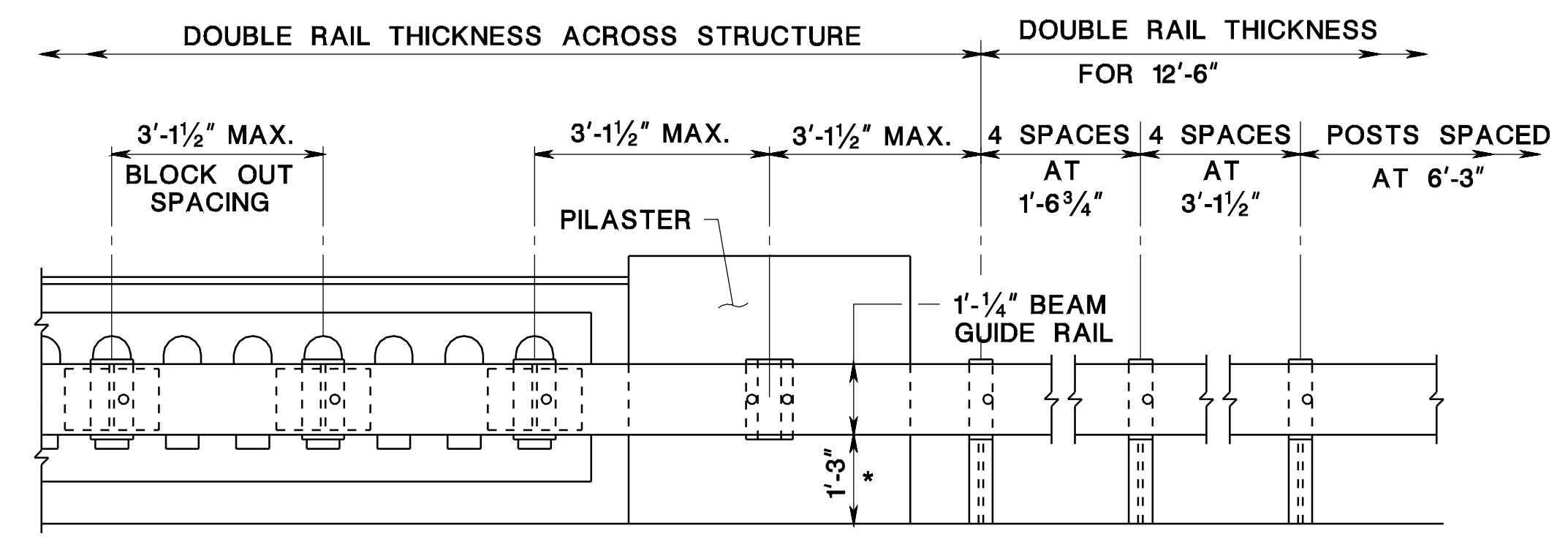
**MOUNTING PLATE**



**PIPE SPACER**



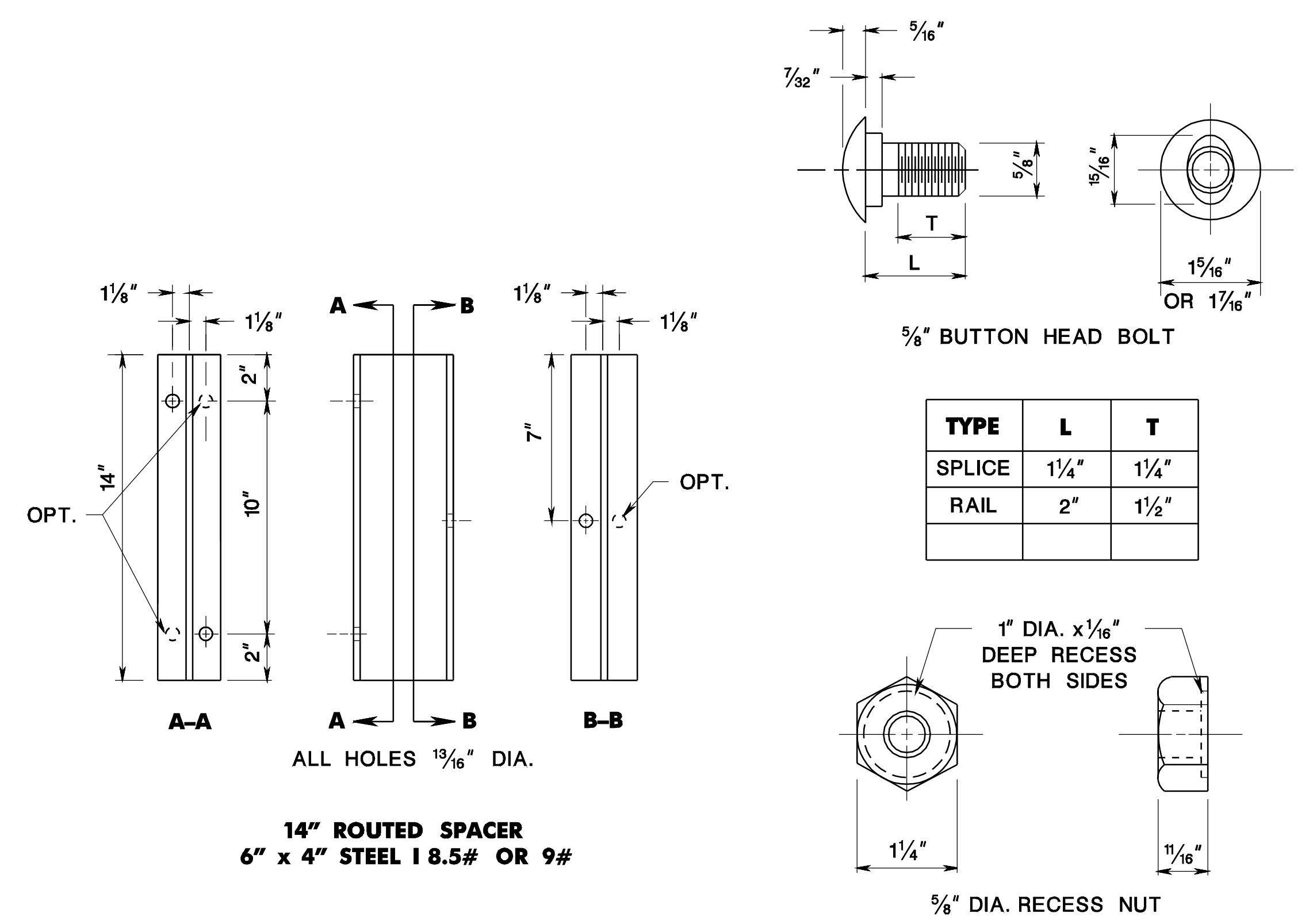
**PLAN**



**ELEVATION**

**GUIDE RAIL ATTACHMENT TO BALUSTRADE**

\* MEASURED FROM TOP OF CURB IF ROADWAY CURB EXISTS, OTHERWISE MEASURED FROM GUTTERLINE.  
 SEE CD-609-11.2 FOR GENERAL NOTES

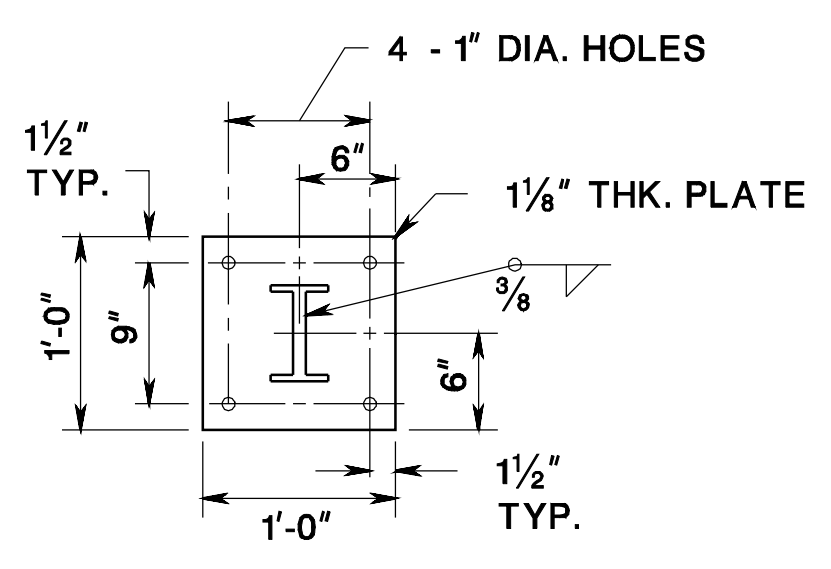


TYPE	L	T
SPLICE	1 1/4"	1 1/4"
RAIL	2"	1 1/2"

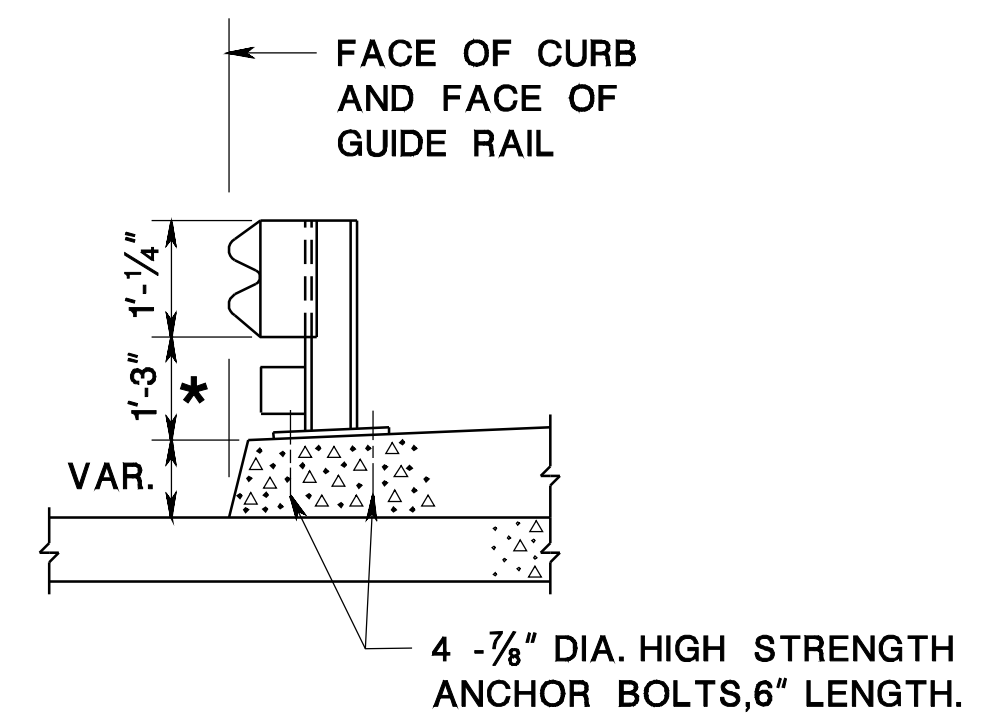
**SPLICE & RAIL NUT & BOLT**

NOTE 1: WHEN THE CONFIGURATION OF BRIDGE ABUTMENTS AND WINGWALLS DO NOT ACCOMMODATE THE INSTALLATION OF POST 1, THE POST MAY BE ATTACHED TO THE ABUTMENT HEADER WITH THE USE OF A BASE PLATE.

CD-609-10.1



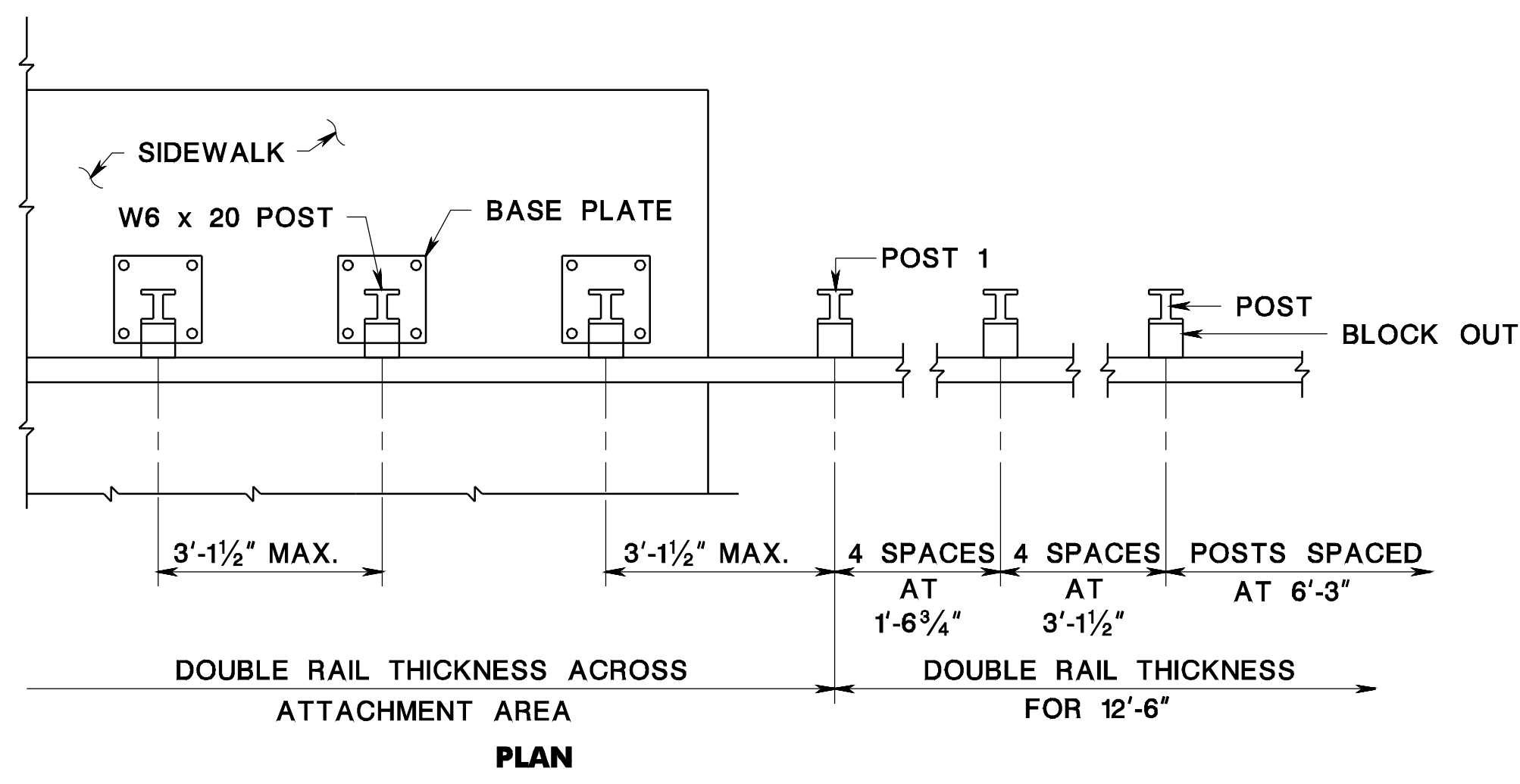
**BASE PLATE**



**SECTION**

\* MEASURED FROM TOP OF CURB IF ROADWAY CURB EXISTS, OTHERWISE MEASURED FROM GUTTER LINE.

SEE CD-609-11.2 FOR GENERAL NOTES



**PLAN**

**GUIDE RAIL ATTACHMENT TO SIDEWALK**

NOTE 1: USE "BEAM GUIDE RAIL BRIDGE" ITEM IF SIDEWALK IS ON A STRUCTURE. IF SIDEWALK IS NOT ON A STRUCTURE USE "BEAM GUIDE RAIL" ITEM AND SIDEWALK SHALL BE MINIMUM 8 INCHES THICK  
 NOTE 2: WHEN THE CONFIGURATION OF BRIDGE ABUTMENTS AND WINGWALLS DO NOT ACCOMMODATE THE INSTALLATION OF POST 1, THE POST MAY BE ATTACHED TO THE ABUTMENT HEADER WITH THE USE OF A BASE PLATE.

CD-609-10.2

**BEAM GUIDE RAIL ATTACHMENTS**

N.T.S.

CD-609-10

NEW JERSEY DEPARTMENT OF TRANSPORTATION

**CONSTRUCTION DETAILS**