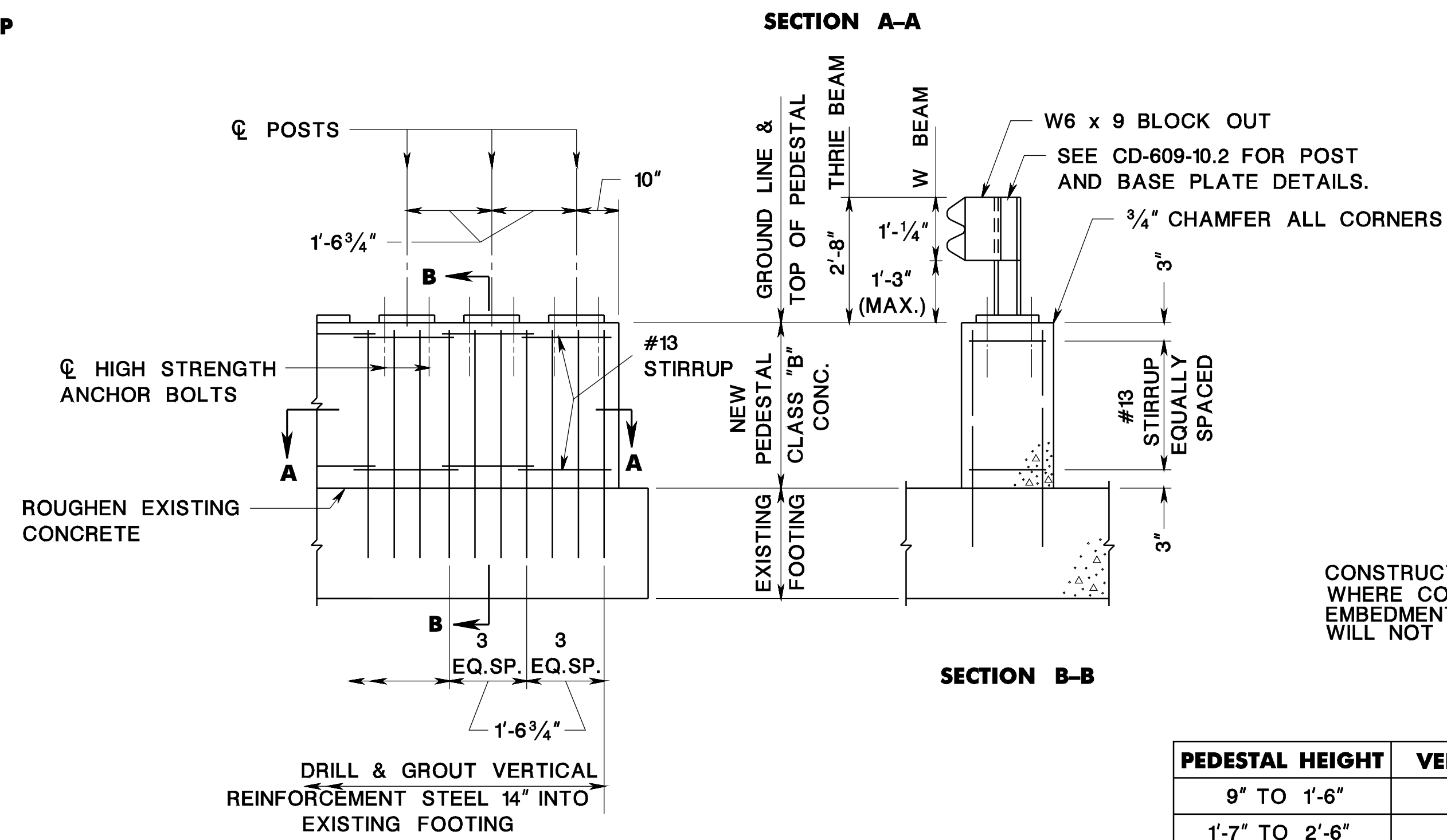
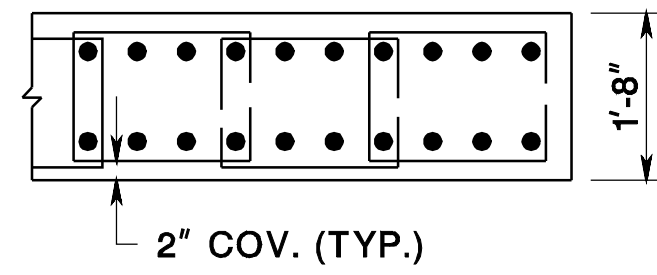
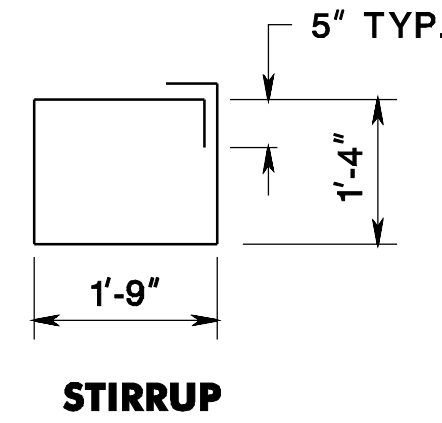


pen table= \\njdotprjw\vsystem\NJDOTW\Projects\NJDOTEng\Plot\TBLs\Roadway\basic.tbl
 scale= 30.000000;1.000000
 date= 17-DEC-2007 09:48
 ID= TFXBHAY

BDC070-01- ORIGINAL SHEET



PEDESTAL HEIGHT	VERTICAL REINFORCEMENT STEEL	STIRRUPS
9" TO 1'-6"	#16	2 - #13
1'-7" TO 2'-6"	#16	3 - #13
2'-7" TO 3'-6"	#16	4 - #13
3'-7" TO 4'-0"	#16	5 - #13

GUIDE RAIL ATTACHMENT TO FOOTING

SEE CD-609-11.2 FOR GENERAL NOTES

CD-609-11.1

GENERAL NOTES

STRUCTURAL STEEL PLATES AND SHAPES SHALL CONFORM TO ASTM A36 AND SHALL BE GALVANIZED PER ASTM A123.

STEEL BOLTS, NUTS AND WASHERS SHALL CONFORM TO ASTM A307, UNLESS DESIGNATED AS HIGH STRENGTH. HIGH STRENGTH BOLTS, NUTS AND WASHERS SHALL CONFORM TO ASTM A325. HARDWARE SHALL BE GALVANIZED PER ASTM A153.

REINFORCEMENT SHALL CONFORM TO ASTM A 615, GRADE 60.

FOR CD-609-10.2 HIGH STRENGTH BOLTS FOR BASE PLATE ANCHORAGE SHALL BE FULLY THREADED AND INSTALLED IN CORED HOLES NO GREATER THAN THE BOLT DIAMETER PLUS 1/4". CARE SHALL BE EXERCISED TO AVOID DAMAGE TO EXISTING REINFORCEMENT AND CONDUITS. MINIMUM EMBEDMENT LENGTH SHALL BE 6" BOLTS SHALL BE EPOXY GROUTED IN PLACE PER MANUFACTURER'S RECOMMENDATIONS TO ATTAIN A MINIMUM PULLOUT STRENGTH OF 24,000 POUNDS AT THE CONSTRUCTION SITE AS CERTIFIED BY THE CONTRACTOR.

FOR CD-609-11.1, HIGH STRENGTH BOLTS FOR BASE PLATE ANCHORAGE MAY BE CAST IN PLACE IN FRESH CONCRETE WITH A MINIMUM EMBEDMENT LENGTH OF 20".

WELDING OF POSTS TO BASE PLATES SHALL CONFORM TO THE ANSI/AASHTO/AWS D1.5 BRIDGE WELDING CODE.

CD-609-11.2

REINFORCEMENT STEEL IS IN METRIC UNITS.

BEAM GUIDE RAIL ATTACHMENTS

N.T.S.

CD-609-11

NEW JERSEY DEPARTMENT OF TRANSPORTATION

CONSTRUCTION DETAILS