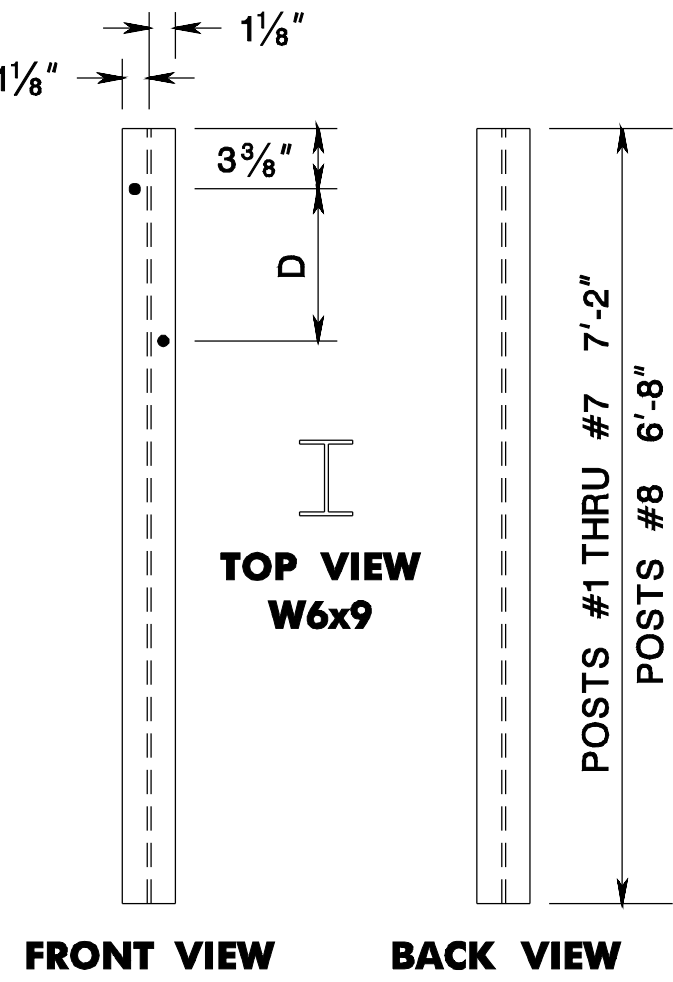


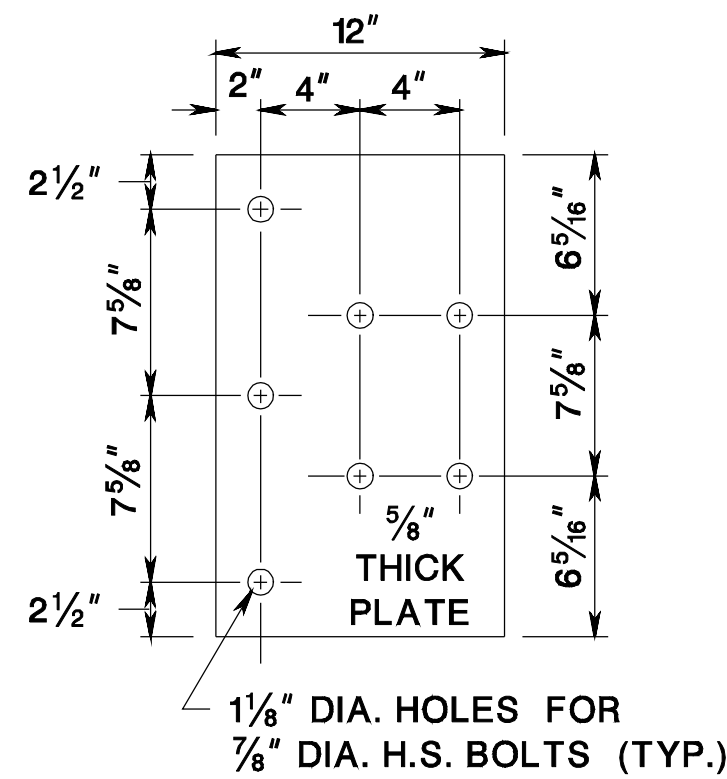
Post and Spacer Tube Dim.		
DIM.	POSTS #1 - #7	POST #8
A	1'-5 3/4"	1'-1 7/8"
B	7 5/8"	3 3/4"
C	7 5/8"	3 3/4"
D	7 5/8"	3 3/4"

- NOTES:**
- STEEL FOR SPACER TUBE SHALL MEET ASTM A500 GRADE B.
 - STEEL FOR WIDE-FLANGE SHALL MEET ASTM A36.
 - GALVANIZED
 - ALL HOLES DRILLED OR PUNCHED TO 3/4" DIA.
 - WELDING OF SPACER TUBE SHALL BE DONE ACCORDING TO THE ANSI/AWS D1.1 STRUCTURAL WELDING CODE.

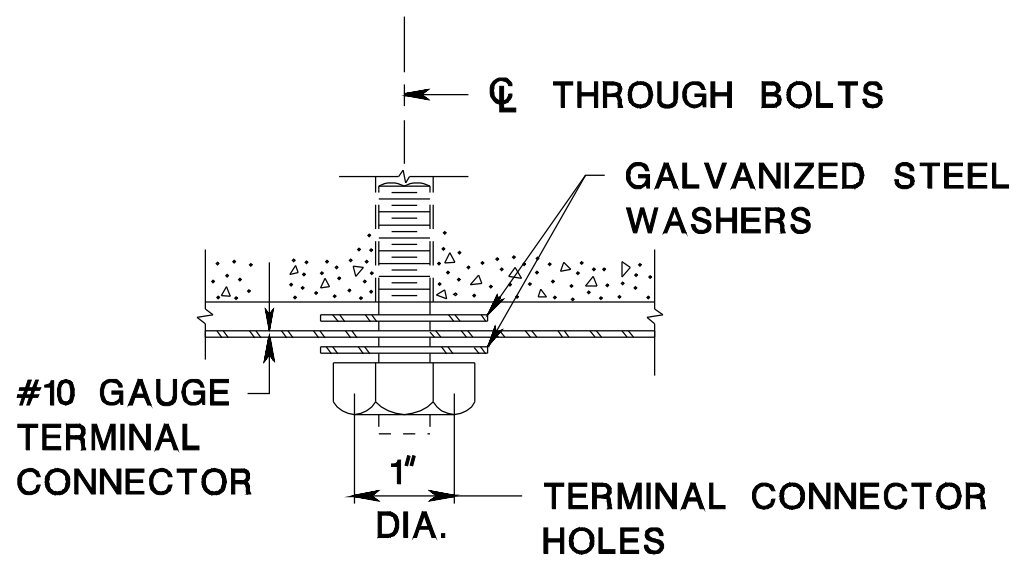


FRONT VIEW BACK VIEW

POSTS

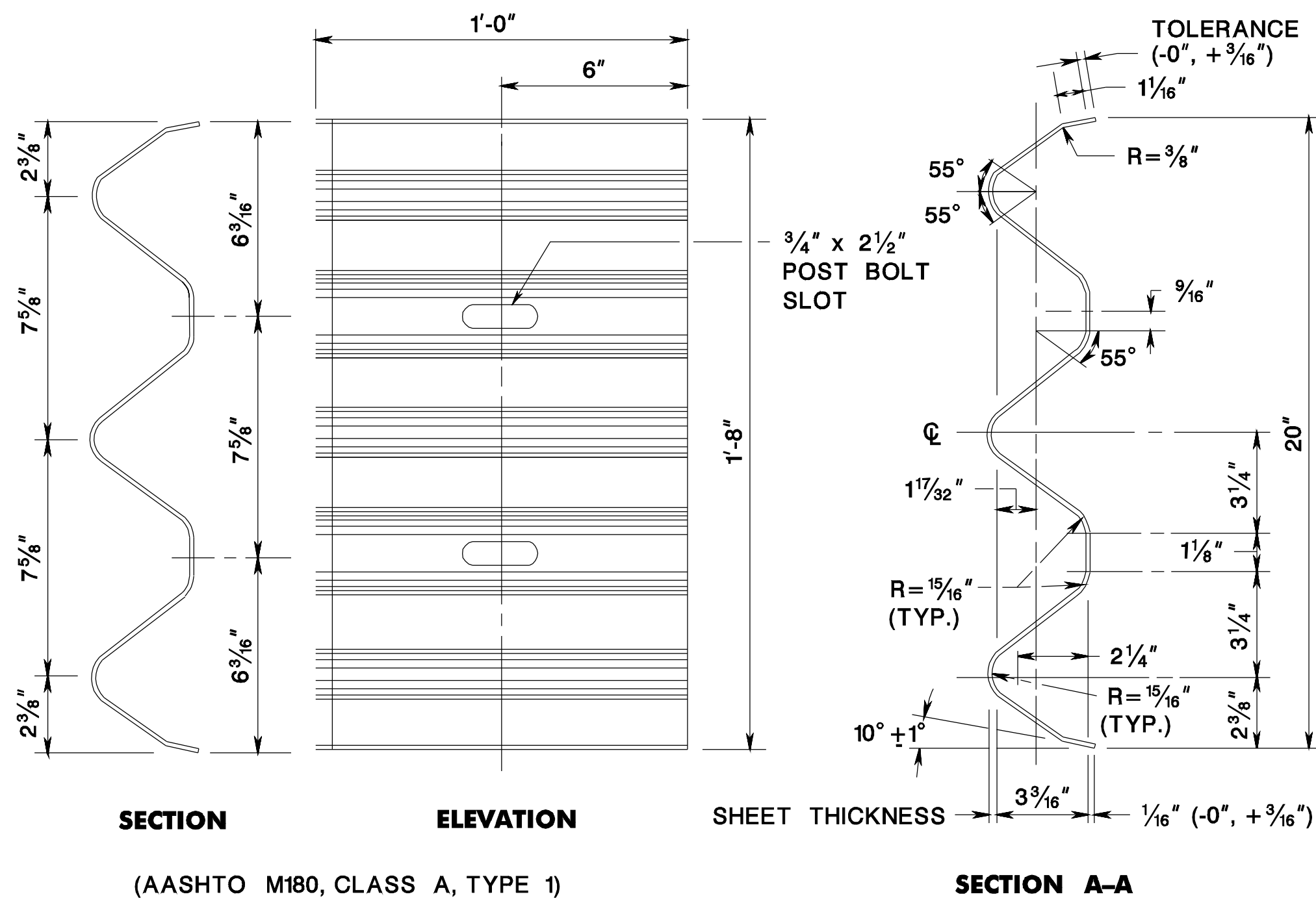


BACKUP PLATE FOR TERMINAL CONNECTOR

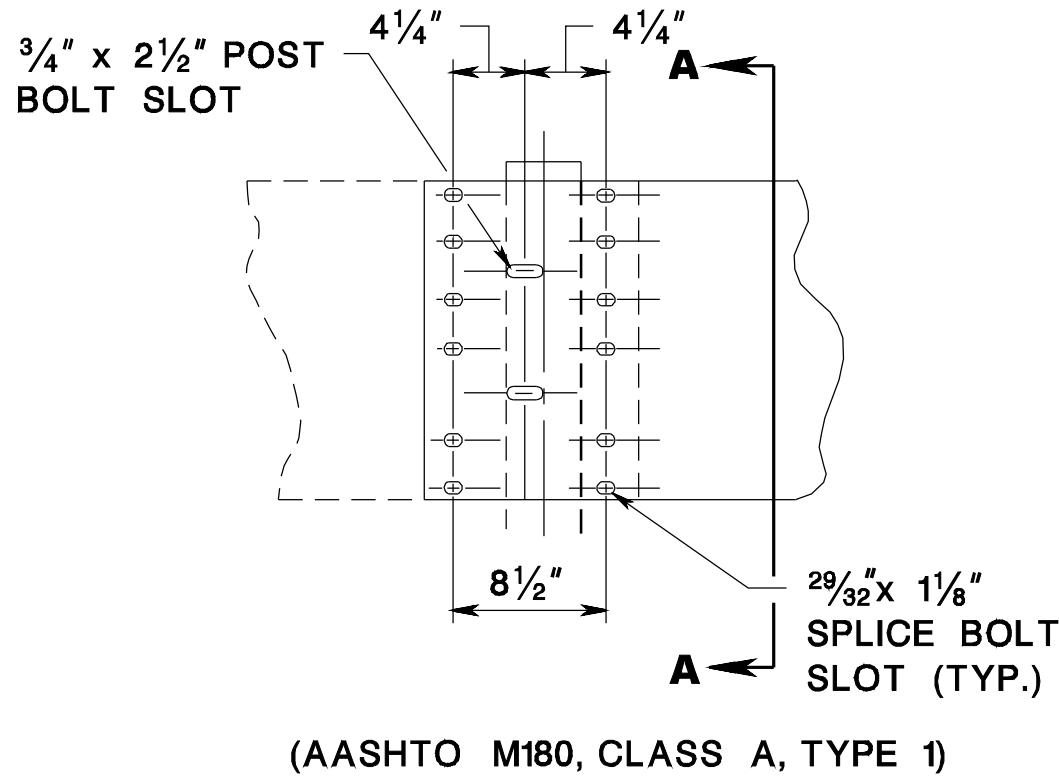
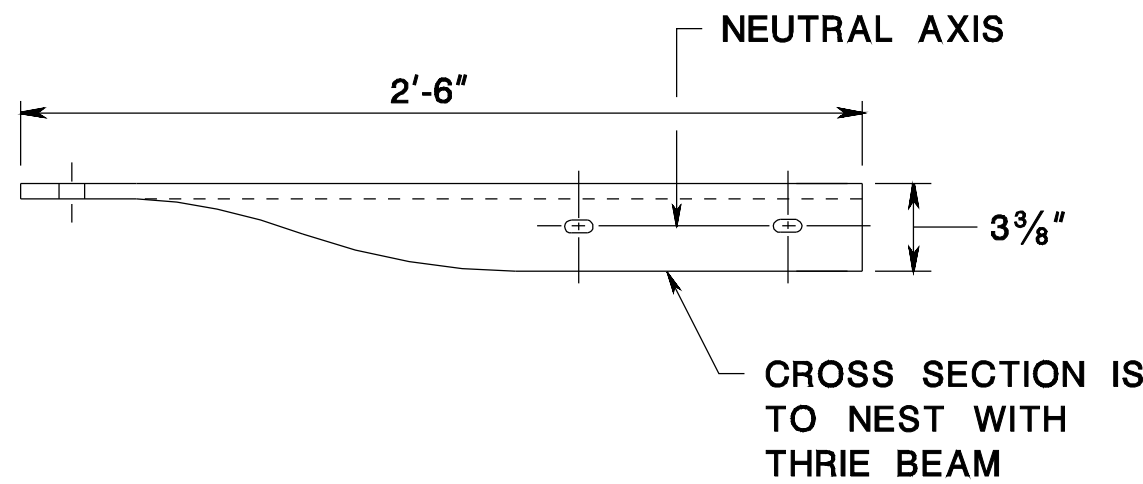


TERMINAL ANCHORAGE

SEE CD-609-11.2 FOR GENERAL NOTES

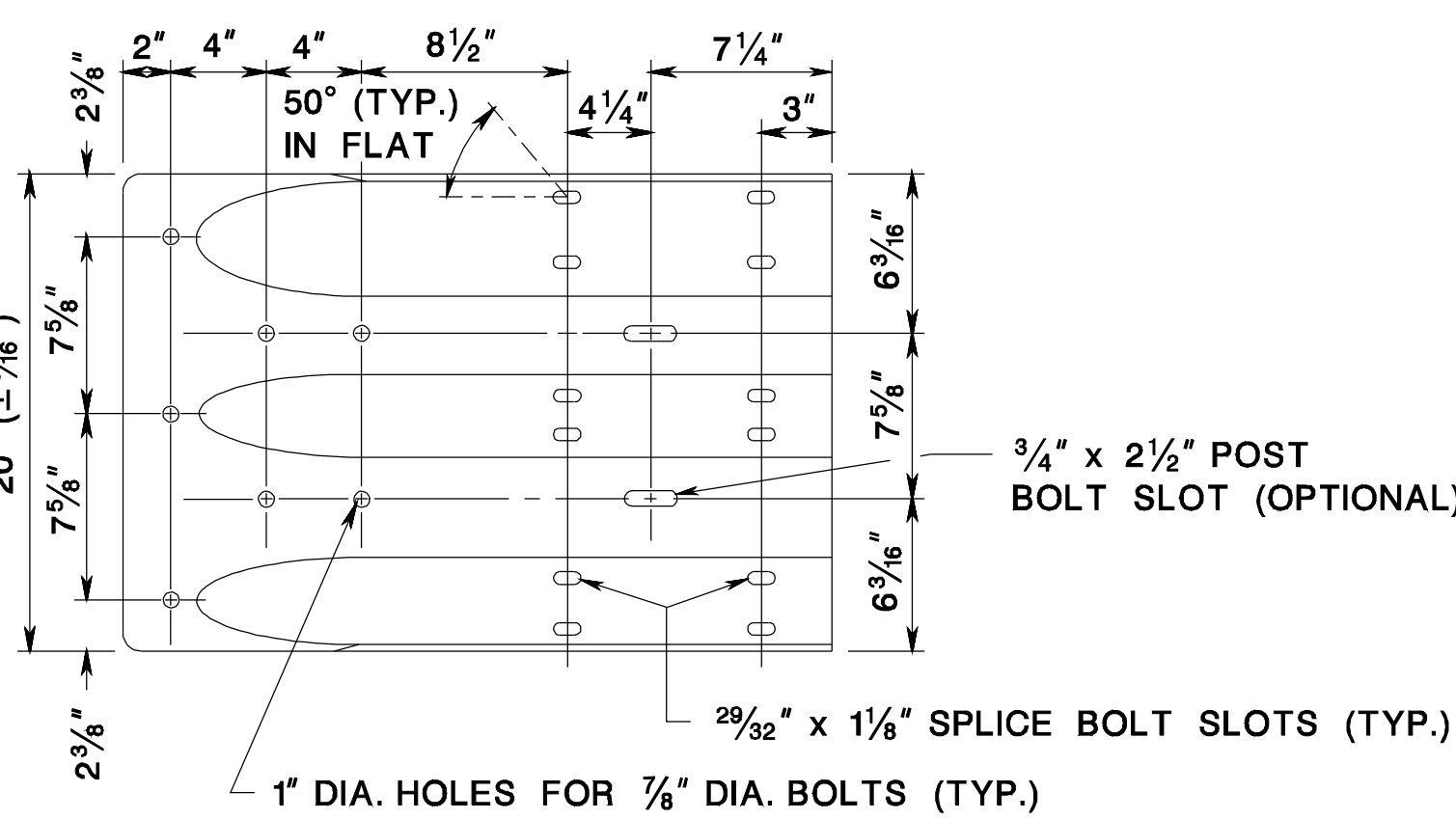


BACKUP PLATE AT NON SPLICE POSTS



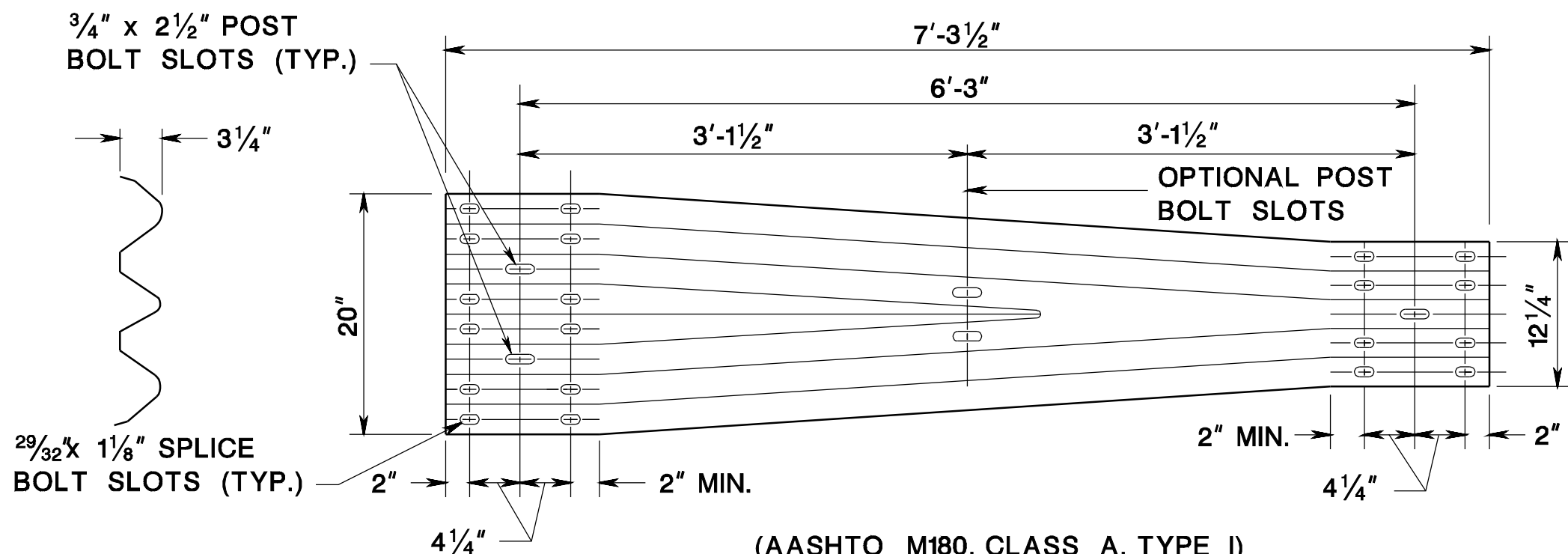
ELEVATION THRIE BEAM SPLICE

(AASHTO M180, CLASS A, TYPE 1)



TERMINAL CONNECTOR

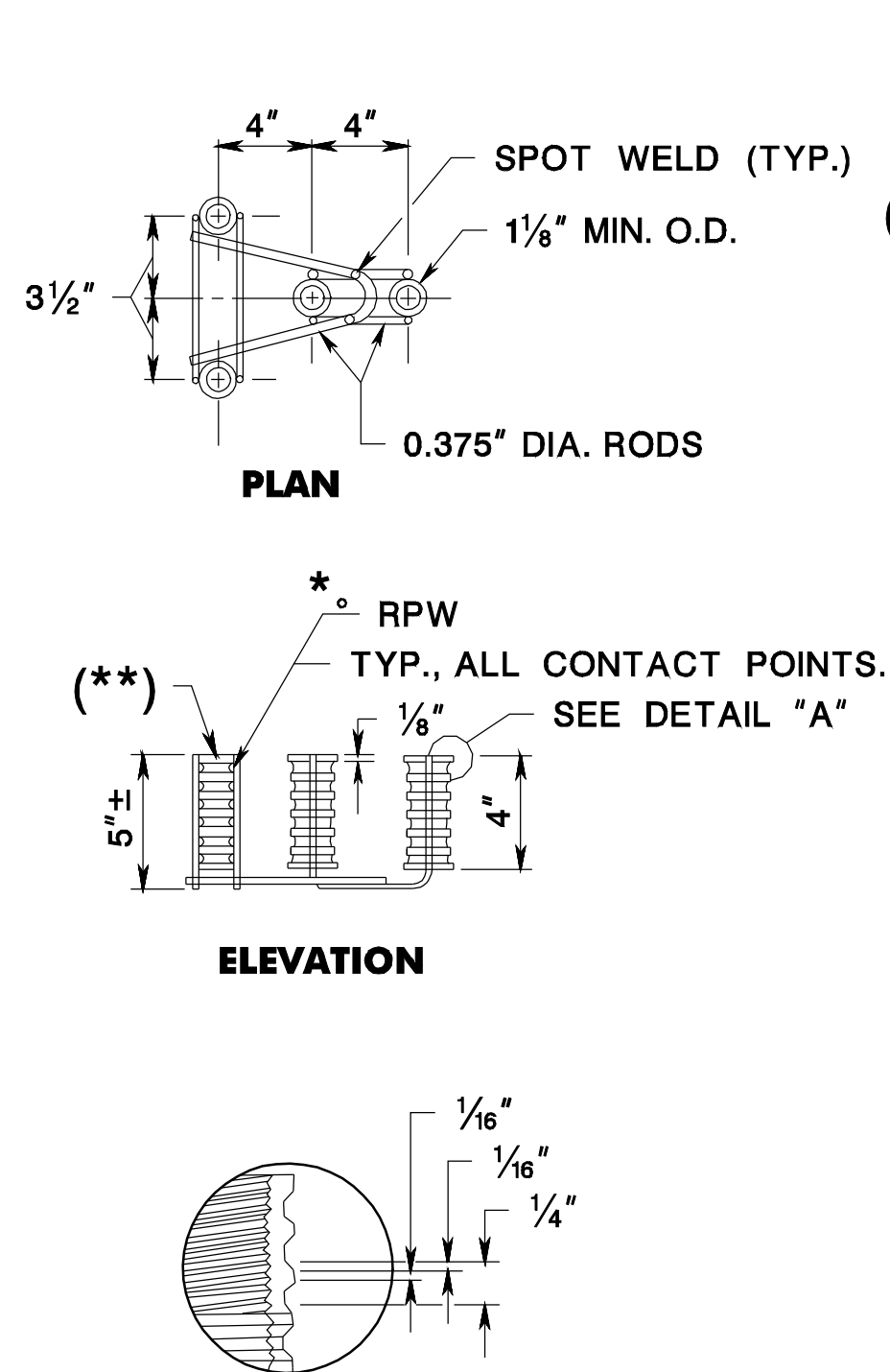
(AASHTO M180, CLASS B, TYPE 1)



THRIE BEAM

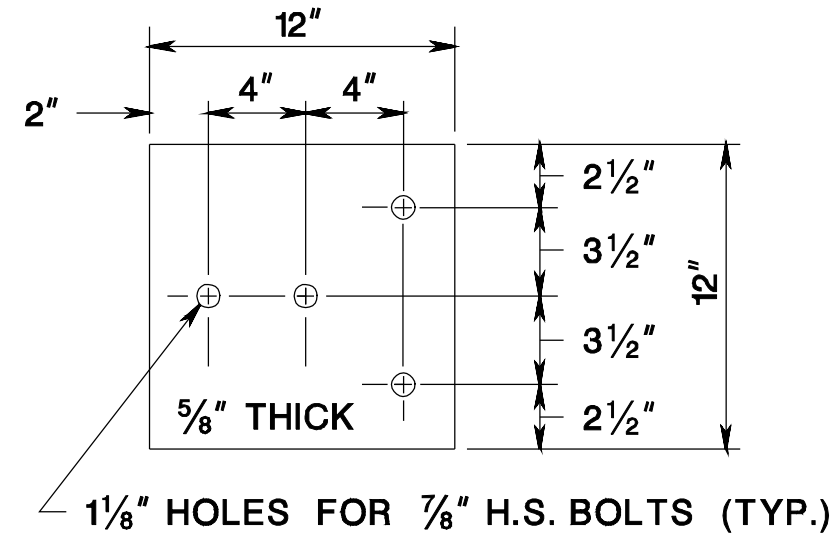
W - THRIE BEAM TRANSITION SECTION

CD-609-12.1



DETAIL "A"

SEE CD-609-12.1 FOR TERMINAL ANCHORAGE



BACKUP PLATE FOR TERMINAL CONNECTOR

SEE CD-609-11.2 FOR GENERAL NOTES

W BEAM TERMINAL CONNECTOR

THRIE BEAM AND W BEAM TERMINAL CONNECTOR

N.T.S.

CD-609-12

NEW JERSEY DEPARTMENT OF TRANSPORTATION

CONSTRUCTION DETAILS