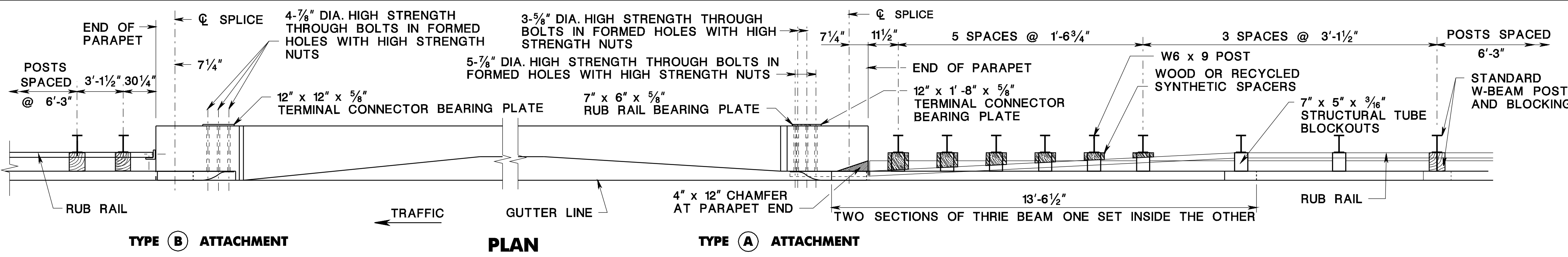
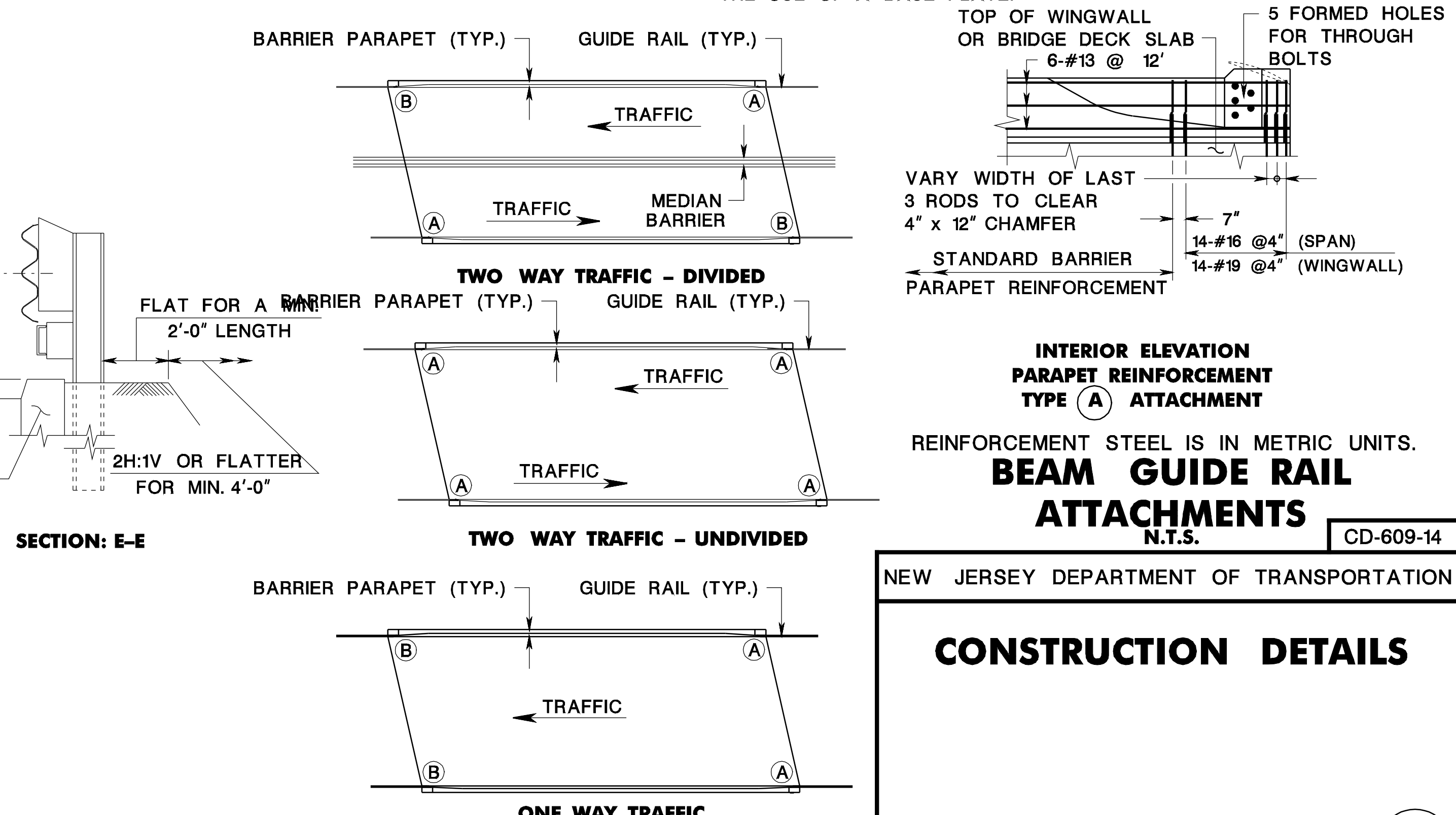
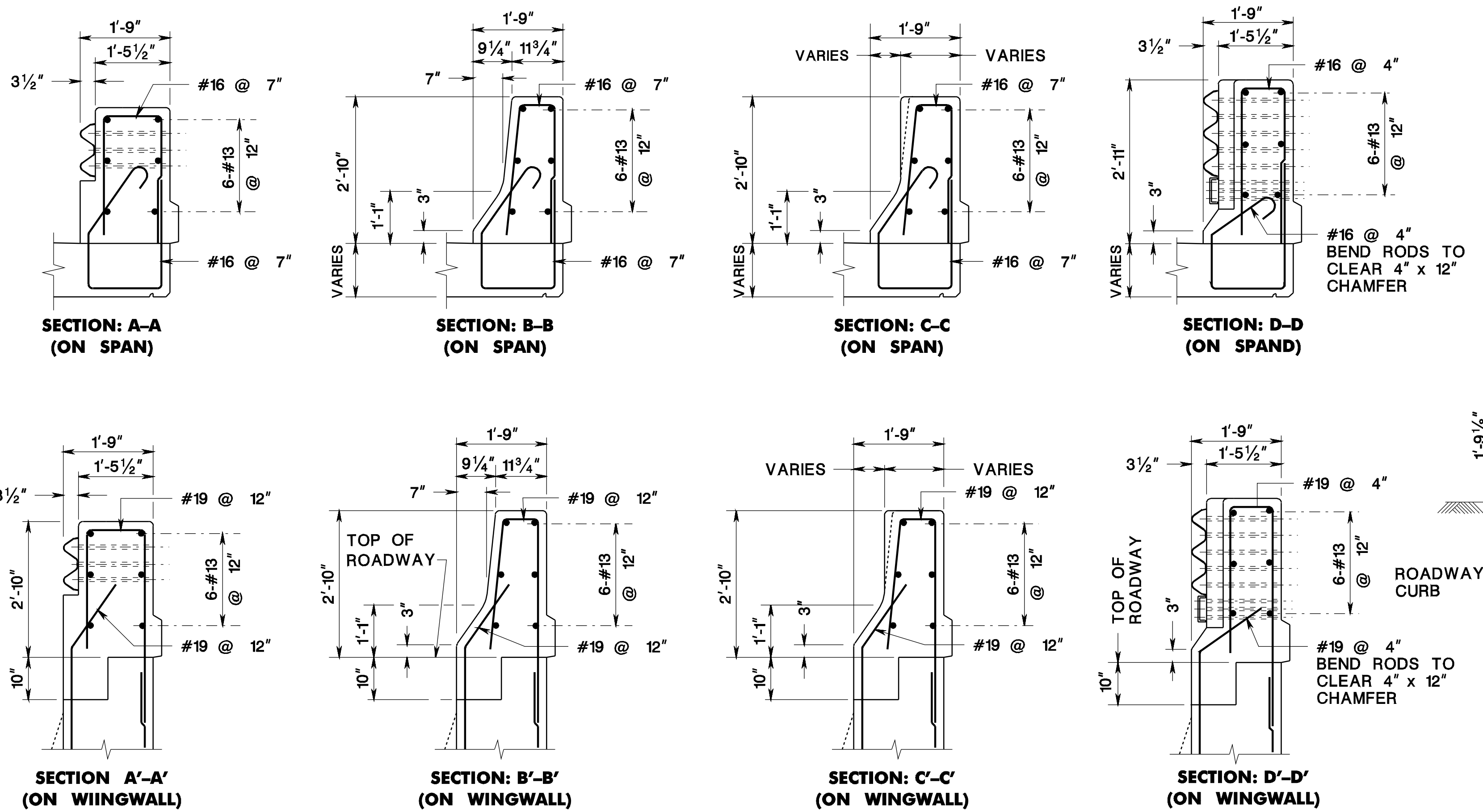
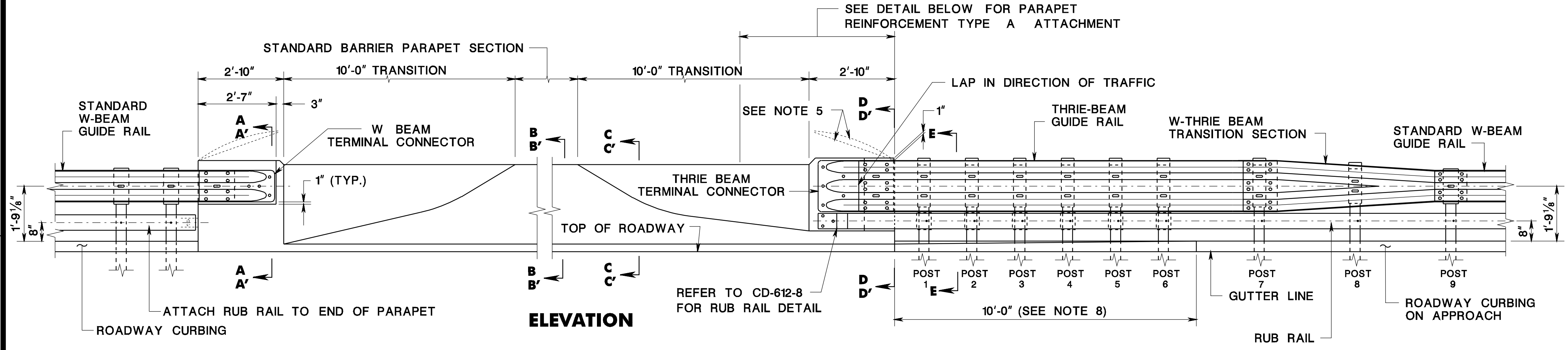


pen table= \\njdotprjw\vsystem\NJDOTW\Projects\NJDOTEng\Plot\TBLa\Roadway\basic.tbl  
 scale=30.000000;1.000000  
 date=17-DEC-2007 09:49  
 ID=TPXBHAY  
 BDC07D-01- ORIGINAL SHEET



- NOTES:**
- THIS GUIDE RAIL TRANSITION IS APPROPRIATE FOR CONNECTION TO A VERTICAL CONCRETE SHAPE AND SHOULD NOT BE CONNECTED DIRECTLY TO A CONCRETE SAFETY SHAPE. CONCRETE SAFETY BARRIER SHOULD BE TRANSITIONED TO A VERTICAL SHAPE AT THE GUIDE RAIL CONNECTION.
  - FOR RECOMMENDED ATTACHMENT, REFER TO "BRIDGE ATTACHMENT TYPES", THIS SHEET.
  - ALL CROSS SLOPES BETWEEN THE PAVEMENT EDGE AND POSTS SHALL BE 1V:10H OR FLATTER.
  - EMBANKMENT MATERIAL CONFORMING TO THE NJDOT STANDARD SPECIFICATIONS SECTION 203 SHALL EXTEND FLAT BEHIND THE POSTS AT LEAST 2'-0" AT WHICH POINT A SLOPE OF NO STEEPER THAN 1V:2H SHOULD EXTEND A MINIMUM OF 4'-0" FURTHER.
  - BARRIER PARAPET END MAY HAVE TO BE RECONFIGURED TO ACCEPT DIFFERENT TYPES OF RAILING OR FENCING THAT MAY BE MOUNTED ON TOP OF THE PARAPET.
  - AT TYPE A ATTACHMENTS, THRIE BEAM RAIL ELEMENT WILL REQUIRE ADDITIONAL POST MOUNTING HOLES FOR POST #1, #3 AND #5. CAUTION, HOLES ARE TO BE SHOP PUNCHED OR DRILLED BEFORE GALVANIZATION. NO FIELD DRILLING IS PERMITTED.
  - POSTS 1 THRU 7 SHALL BE 7'-2" LONG WITH 4'-10" POST EMBEDMENT. POST 8 SHALL BE 6'-8" LONG WITH 4'-6" POST EMBEDMENT. POST 9 SHALL BE 6'-8" LONG WITH 4'-4" POST EMBEDMENT.
  - TRANSITION LAST 10 FEET OF ROADWAY CURBING TO MATCH BARRIER PARAPET SHAPE.
  - LOCATE CONDUIT AT END OF BARRIER PARAPETS SO AS NOT TO INTERFERE WITH GUIDE RAIL POST SPACING.
  - LOCATE DRAINAGE INLETS AND ELECTRICAL JUNCTION BOXES ON APPROACHES SO AS TO NOT INTERFERE WITH GUIDE RAIL POST SPACING.
  - STRUCTURAL STEEL PLATES AND SHAPES SHALL CONFORM TO AASHTO M270 AND SHALL BE GALVANIZED PER AASHTO M111.
  - HIGH STRENGTH STEEL BOLTS, NUTS AND WASHERS SHALL CONFORM TO AASHTO M164. ZINC COATED BOLTS, NUTS AND WASHERS SHALL BE TREATED ACCORDING TO AASHTO M232M.
  - THE THICKNESS OF THRIE-BEAM, W-BEAM AND W-THRIE BEAM TRANSITION SHALL BE 12-GAUGE.
  - FOR ADDITIONAL THRIE BEAM AND W-BEAM DETAILS REFER TO CD-609-1, CD-609-3, AND CD-609-12.
  - WHEN THE CONFIGURATION OF BRIDGE ABUTMENTS AND WINGWALLS DO NOT ACCOMMODATE THE INSTALLATION OF POST 1, THE POST MAY BE ATTACHED TO THE ABUTMENT HEADER WITH THE USE OF A BASE PLATE.



**GUIDE RAIL ATTACHMENT - NEW CONSTRUCTION  
 NEW JERSEY BARRIER SHAPE PARAPET (WITH ROADWAY CURBING ON APPROACH)**

**BRIDGE ATTACHMENT TYPES**

**INTERIOR ELEVATION  
 PARAPET REINFORCEMENT  
 TYPE (A) ATTACHMENT**  
 REINFORCEMENT STEEL IS IN METRIC UNITS.  
**BEAM GUIDE RAIL  
 ATTACHMENTS**  
 N.T.S. CD-609-14

NEW JERSEY DEPARTMENT OF TRANSPORTATION

**CONSTRUCTION DETAILS**